

751

GONE

1

Francis W. Lincoln

327 Friends St.

Bernard Brady D.L.

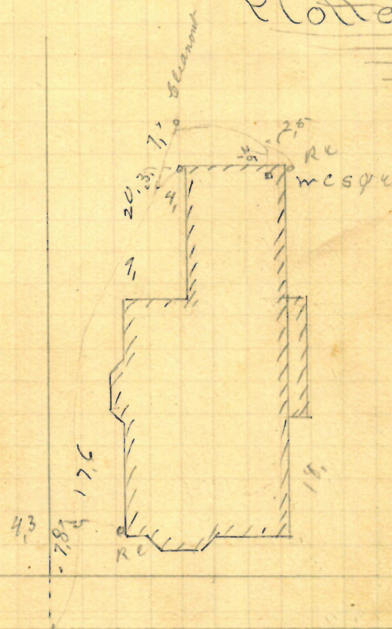
Permit 5884

V Cont at curb 10.4"

Opened Oct 2-1890

Closed " 9-1890

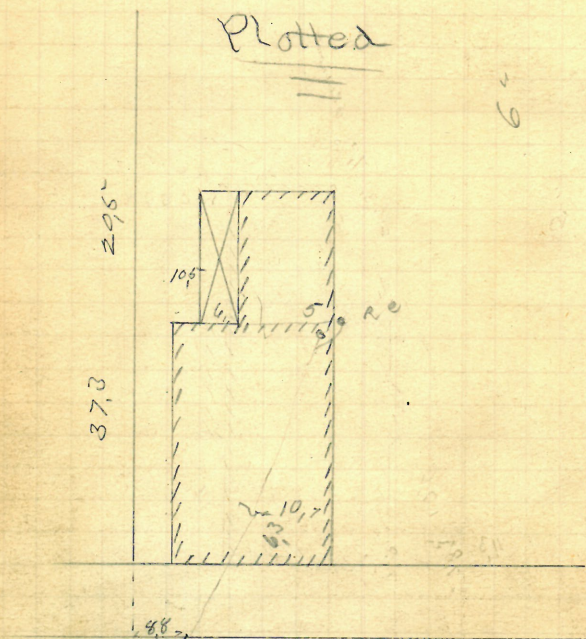
Plotted.



114.4 x 71.1

Summer 8-

Thos J Carpenter. Exr
 88 Cranston St.
 of Frank Read D.L.
 Permit 5-885-
 V cut at curb 10"
 Opened Oct 1-1890
 Closed " 4-1890



Enters M.H.
 at Burgis St

4

GONE

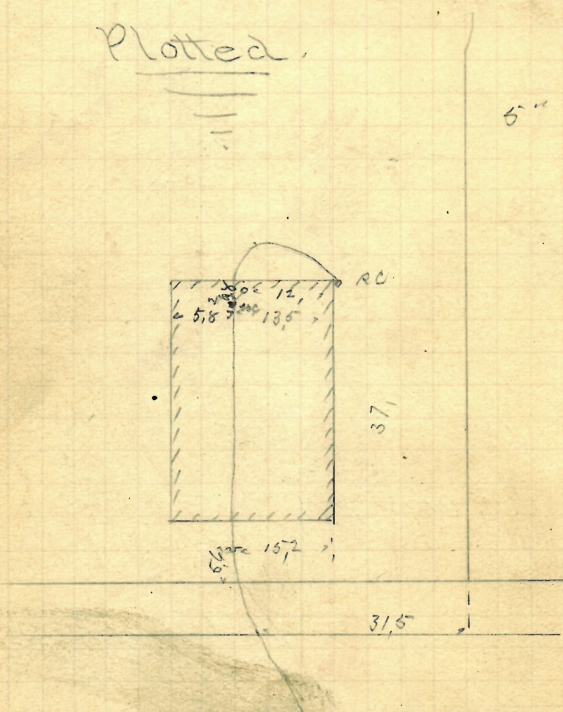
Sarah J. Richmond
433 Friendship St.
Jason A. Blackmar.
Permit 5887

Opened Oct 10-1890
Closed " 13-1890

reopened Dec 13/92
closed " " "

Reopened Aug.
Closed Aug. 1890
Reopened
Clear House

Plotted.



166, W of NH
at Somerset St

R. Dec. 1/90.

Patrick Mc Luer
 391-397 Atwell Ave N.W. Cor Lily St
 Frank Read D.S.
 Permit 5888

Opened Oct. 15/1890
 Closed " 20, 1890
 Out at curb, 10.

For Work done
 Oct. 24-1924 Rec.
 No. 8449, to 13-

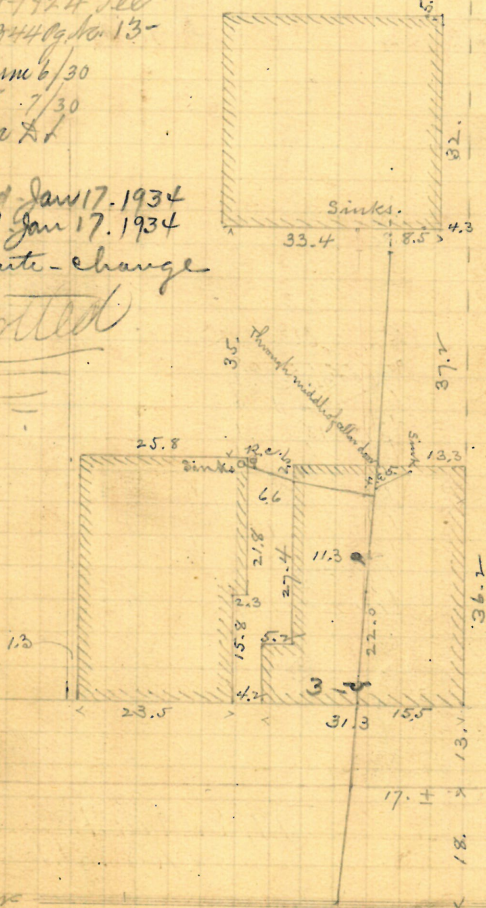
opened June 6/30
 closed 7/30
 Madonna St
 Man -

opened Jan 17. 1934
 closed Jan 17. 1934
 Arden - change

Plotted

6" pipe.

Change to E. Broadway St.



Lily St.

Sever

Enters 160.1 E. of 1st. mch R.
 of Piedmont

R. Nov. 12/30

Thomas Yully
451-453 Atwell Ave
Bernard Brady D.L.
Permit 5889

✓ Cut at Crest 104
Opened Oct 8-1899
Closed " 10-1899

Reopened June 7-1906 Re July 10 1947 7/7/47

Closed " 8-1906 Clo July 10 1947

J. C. McElroy D. L. att. H. M. Matson

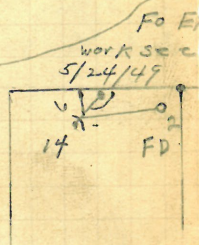
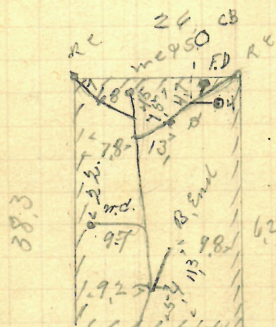
Re May 23 1949 5/

Clo May 23 1949/24/49

add PCanson D.L.

Plotted.

5" from



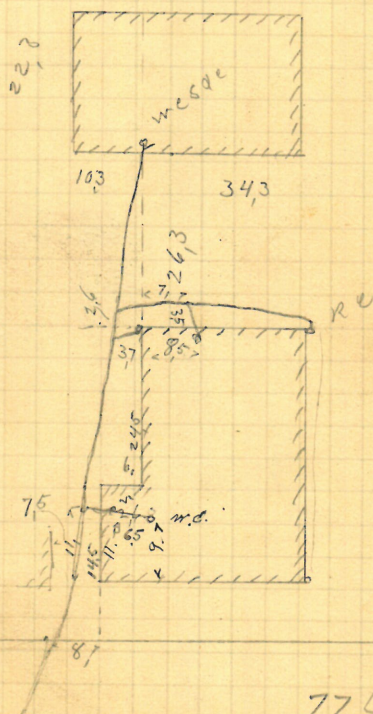
19, E of 1 MH
Knight St.

John O Donnell & Wife
 20-22 Heddy St
 John Keogh & L.
 Permit 5890

Opened Oct 8-1890
 Closed " 10-1890

Reopened Dec. 31-1920
 Closed Jan 4-1920
 H. Matzner S. L.

Plotted.



77.4 Ed 2 M H
 " Walling 60

R. Dec. 6/90.

Not Remained $P - \frac{158}{29}$

Henry C Locke

45-47 Howell St

John Hoogh O.L.
Permit 5891

087

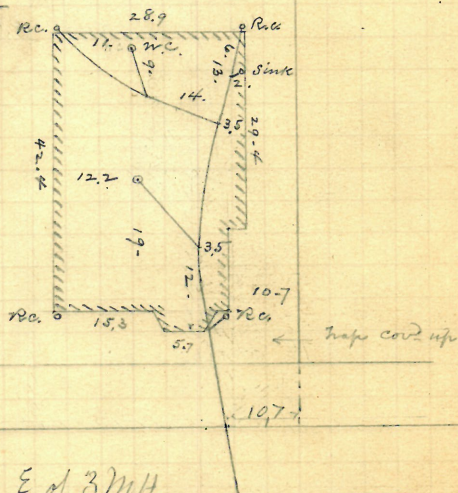
Cent at Cent 8.5

Opened Oct 11-1890

to David Dec. (2) 1890

5" from sewer

Plotted.

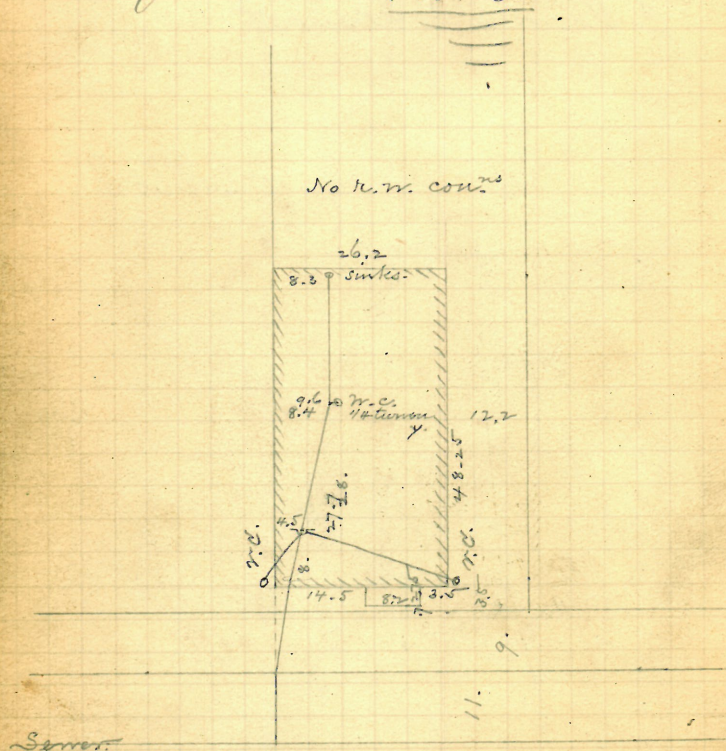


126.9 E. of 3M4
in Camp 86,

Work done without notice to me
and the points like above diagram
afterwards given to me by Mr. Keogh.
C.H.P.

R. Dec. 20/90.

Charles H. Perkins
 118 & Faber S.E.
 I Frank Read D.L.
 Permit 5893
 Cut at least 10.5
 Opened Oct. 14, 1890.
 Closed " 21, " 5" pipes.
 Reopened Nov. 17-1905
 Closed " 18-1905
 R. d. Perry D. L. ~ Plotted.



Survey

Enters 149 S. of 35 m.h.
 S. of Broadway.

R. Nov. 12/90

#114

Charles H. Perkins

8 Joven St

f Frank Read D.L.

Permit 5-894

ent at least 10.6

Opened Oct. 13, 1890.

Closed " 18

Reopened Nov. 16-1905

closed " 17-1905

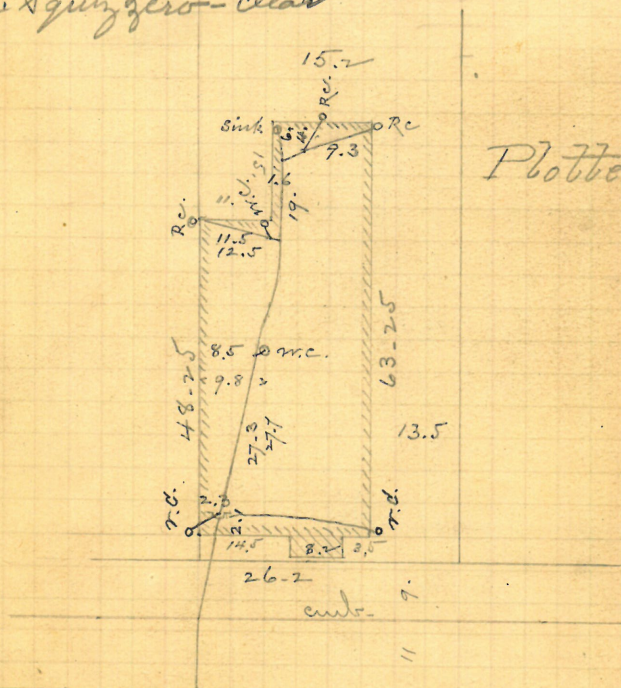
S. C. Perry D. L.

7/ Reopened July 1, 1936

closed July 1, 1936

a Squing zero - clear

Plotted



Enters 109 ft. S. of 3^d m.h.
S. of Broadway.

Y branch top of
sewer.

R. Nov 12/90.

Charles H. Perkins

102

+4 J. J. J. J. J.

Frank Read D. L.

Permit 5897

cut at curb, 10.5

Opened Oct 13 - 1890.

Closed " 18 1890

Reopened Nov. 14 - 1905

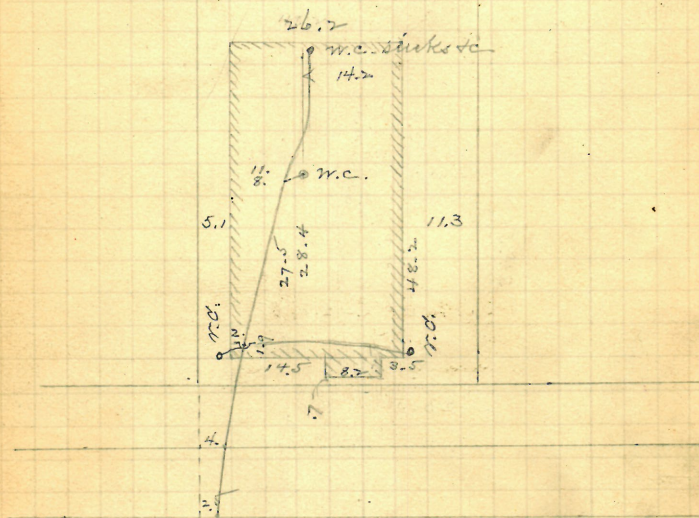
Closed " 16 - 1905

5" pipes

S. A. Perry D. L. ~

Plotted

No rain water con. in this house.



Enters 183.5 S. of 2nd m.h.
S. of Broadway.

Y branch top of sewer.

R. Nov. 12/90.

Clarette Gardiner
 9-7 Arthur Avenue
 Frank Read D.L.
 Permit 5898

Opened Oct 9-1890
 Closed " 11-1890

Reopened Sept. 24 1946
 Closed " 21-1946

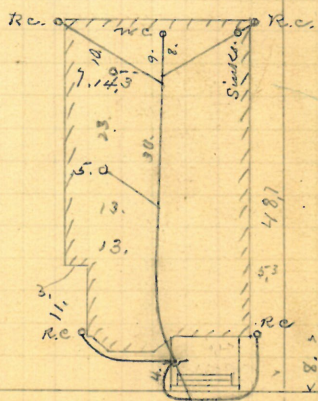
C. W. Colgrove & L. Clemonak
 Plotted.

Reopened Nov. 10, 1931

Closed " 11-1931
 F. R. R. & L.

5-"

282



925 N of M 14
 at Kingston St.

< 11.7 >
 < 16.5 >

GONE

Patrick Fennessy
 447 A Swells Ave
 Bernard Brady D.L.
 Permit 58999
 Exit at Comb 10.2
 Opened Oct 10 - 1890
 Closed " 17 - 1890
 Reopened May 27 - 1907
 Closed " 28 - 1907
 Geo. L. Lewis & L. Kelay - 5" pipe.

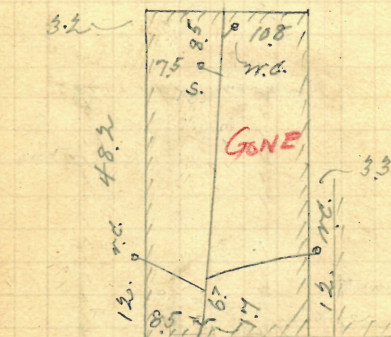
REO.

CLO.

D.L.

COVERED NO INSPECTION

TIE IN TRAILER FOR
 TEMP. CONN IN OLD CONN.



Plotted

43.4 E of 1 M.H.
 " Knight 18

R. Nov. 12/90.

Timothy E. Sheehan
 66? Transit St. N.E. Cor. Mohawk Alley
 John Knight D.L.
 Permit 5-902

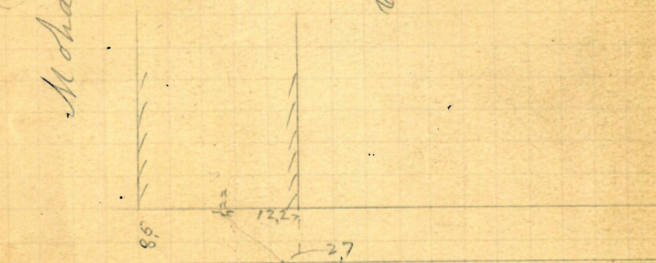
Opened Oct 11-1890
 Closed " 11-1890 5" Pipe
 Ent at least 7.3

Reopened Oct 5-1910
 By W. H. O'Neil D.L.
 to Clearcut
 Reopened Oct 21-1910-
 Closed " 21-1910-
 W. H. Chadsey D.L. - Clearcut

Plotted.

Mohawk Alley

Connects with drain from property



73.2 W of 2nd H
 " 1st Hayer St.

R. Dec. 2/90.

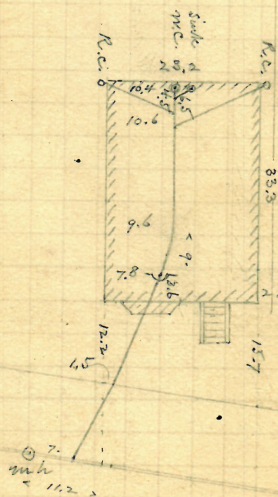
Jan. 23/91

Wm. Quinn
 J. A. Blackman, W.L. 18 Armstrong ave
 Permit #5903.

Opened, Jan. 24, 1891.
 Closed, Feb. 3, "

Cut at curb, 10.4
 " " " 7.0
 5" pipes.

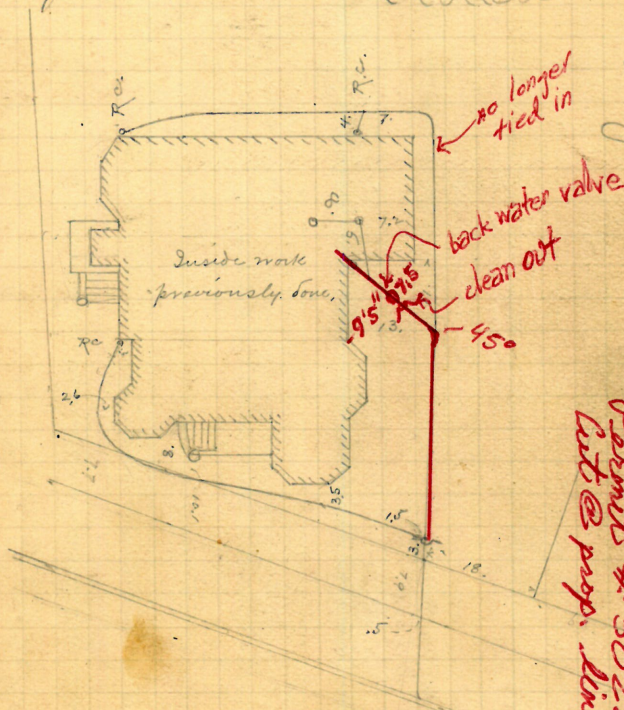
Plotted



R. May 21/91

Centers sewer 7 ft. E. of
 m.h. at street angle E.
 of Brook St.

476 John Cass
 88 Beacon Ave. S.E. Cor. Point St.
 Bernard Hardy D.C.
 Permit 5904
 Out at curb 10.3
 Opened, Oct-21, 1890.
 Closed " 25, " 6" pipe.
 Reopened & closed July 14th 99
 J. Deary, D.C. - Cleanout
 Plotted.



Reopened - Oct 8, 1904
 Closed - Oct 8, 1904
 J. Deary, D.C. - Cleanout

Reopened: October 3, 2009
 Closed: " " "
 Almeida, M. P. # 1668
 Permit # 50224
 Int @ prop. line 11'

Plotted.

30.6 N. of 2^d m. h. S. of
 Point St.
 R. Dec. 1/90.

22

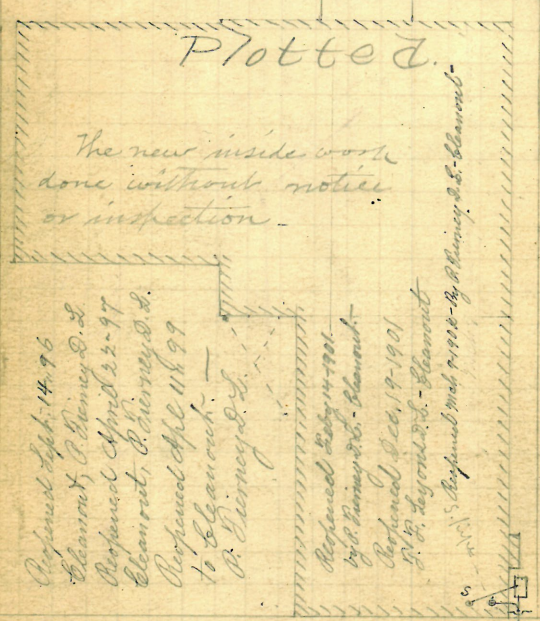
Reopened 15 Cleanout Dec 9-1905
By D. Holmes D. L.

Reopened Dec. 1902
O. H. Holmes D. L.
Walnut St. Cleanout

Ray Allen
11 Green St.
Wilmington 35 Sewer
Patrick Tierney D. L.
Reopened 5-90-6
Cut at curb
Opened Oct. 1890
Closed Dec. 1890
Reopened Nov. 14. 1893 Closed Nov. 14. 1893
Greene St. P. Tierney D. L. Cleanout

Reopened 15. 6. 1905
By D. Holmes D. L.

Reopened July 6. 1943
Closed July 7. 1943
Cleanout



Plotted.

The new inside work
done without notice
or inspection.

Reopened Sept. 14. 96
Cleanout, P. Tierney D. L.
Reopened April 22. 97
Cleanout, P. Tierney D. L.
Reopened April 18. 99
to Cleanout -
P. Tierney D. L.

Reopened Sept. 14. 1901
by P. Tierney D. L. - Cleanout -
Reopened Dec. 19. 1901
P. H. Tierney D. L. - Cleanout
P. Tierney D. L. 1902-1903 - P. Tierney D. L. - Cleanout -

Reopened Aug. 22. 1902
to Cleanout by P. Tierney D. L.
P. Tierney D. L. Reopened Sept. 19. 95
Reopened Sept. 19. 95
by P. Tierney D. L. - Cleanout
to Cleanout - P. Tierney D. L. - Cleanout
P. Tierney D. L. 1902-1903 - P. Tierney D. L. - Cleanout -

Stone Drain

Walnut St.

This drain connected into new sewer
taking place of old stone drain 4.5 n 3.34 NW N
R. Dec. 30/00 connection made NW 3 1900 O. H. Holmes

Colonel " 29-1900
P. Pierney, D. S. Johnston -

Ray Allen
11 Greene St.
Westminster St. Sewer
Patrick Gurney D.L.
Permit 5-906

Received of V. Garvey Co. Ld.
the sum of £100 on 10-10-95. Cleared

Reopened Sept. 26th 94 Plotted
Closed Sept. 26th 94
P. Pierney & Co.

The new inside work
done without
notice or in-
spection

Reopened Sept-14th 96
S. Hancock - Pittsfield, N. H.

Proposed Nov. 14th 1907
 Grant - P. D. D.

Received Oct 3-1962
24
to account - O. Gurney D. L. ~

Requiescat in pax
Sepulchrum - S. Verney, D. L.

Received Sept. 27, 99
 Received Sept. 27, 99
 Received Sept. 27, 99
 Received Sept. 27, 99

enlo

77.5

Walnut

curb

Stone Drain

Connected into new sewer in place of old drain
enters sewer 77.5 x 22" N.W. of Westminster St
R. Dec. 30/90. Correlation made Nov 1 1902
O'Clark D.L.

Catherine Goodwin
John Keogh, 36 Randall St.
D.C. 8th Rock St.
Permit # 5909.

Opened, Oct. 13, 1890.

Closed, " 15,

Reopened Aug. 24, 94 Curb at curb,

Closed Aug. 24, 94

John J. Shanley D.C. W.C. added

9.8-

5" pipe.

(Keogh's return

says 6")

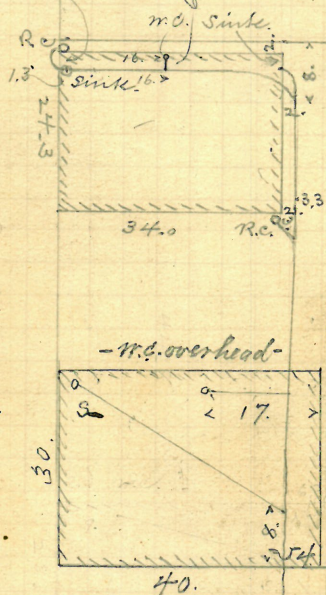
the Sept. 1/32

Ad. 2/32

Barbours H.

W.C.

Plotted.



Reopened Nov. 19-1915-
Closed " 23-1915-
W.C. Boyle D.C.

Rock St.

Sewer

Enters 12 1/2 ft. N. of 1st m.h.
N. of bridge.

R. Jan. 27/91.

Patrick Kelley
413 Atwell's Avenue.
Bernard Brady, D.S.
Permit # 5910.

Opened, Oct. 20, 1890.

Closed, " 22, "

Reopened June 24-1920

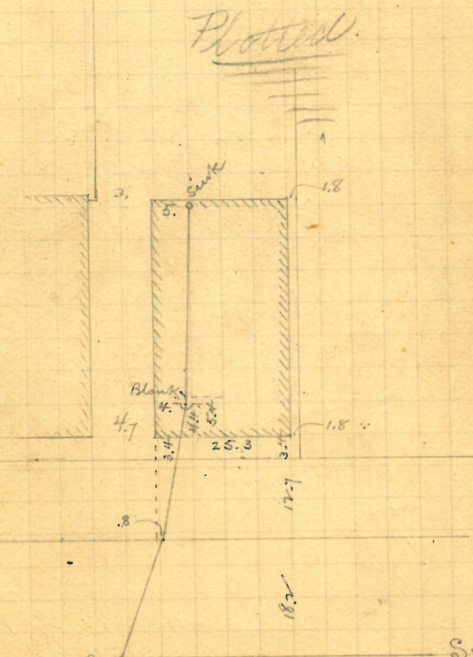
Closed 11 24-1920

B. E. Riccitelli D. L.

All above -

Cont ab cont,
9.6-

5" pipe.



Enters 117 ft. E. of 1st. m. N. W. of Dale sh.

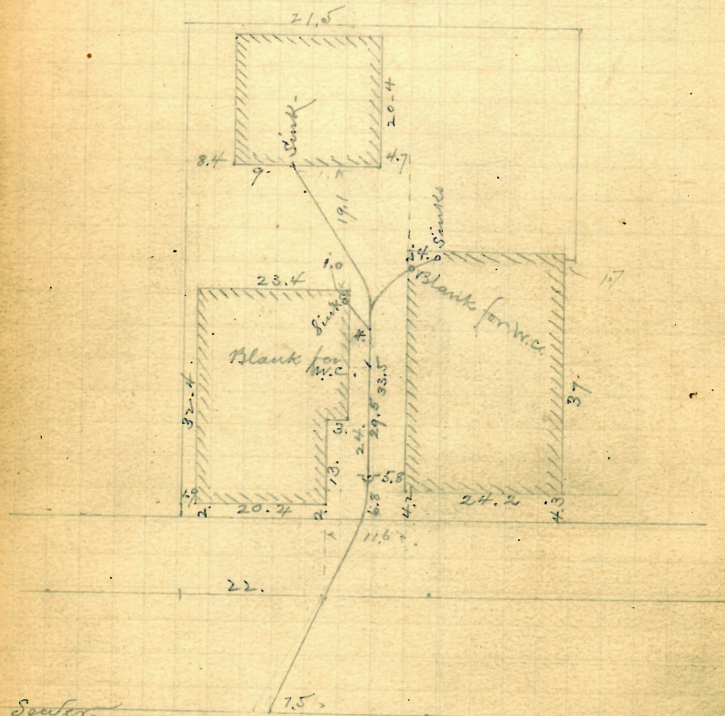
Sewer

2. Nov. 12/90

Opened, Oct. 21, 1890-
Closed " 23, "

Cuts at end
6" pipe.

Plotted.



Sewer.

Enters 74.2 E. of 1st m. T
W. of Dale St

R - Nov. 12/90

Geo. M. Griffin,

422 #48 Broad St.

J. Frank Read, A.C.

Permit #5917.

Oct-18

Opened, Oct. 22, 1890.

Closed " 31, "

Reopened June 24, 95 m.c. added cut at curb, 10 ft

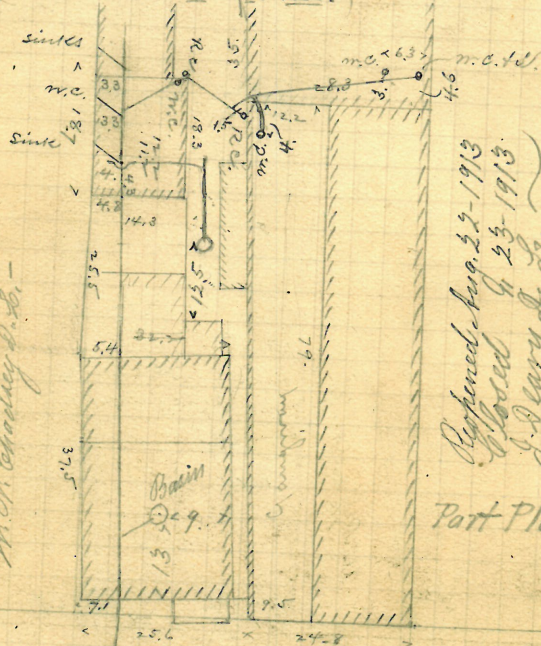
Closed

" 24, 95 } J. Frank Read, A.C.

6" pipe

(Concluded on p. 125.)

Reopened Aug 5, 95
 Closed " 5, 95
 J. Frank Read, A.C.
 Reopened & closed Nov 20, 1904
 J. Frank Read, A.C.



Reopened Aug 22, 1913
 Closed " 23, 1913
 J. Frank Read, A.C.

Part Plotted

R. Dec 20/90.

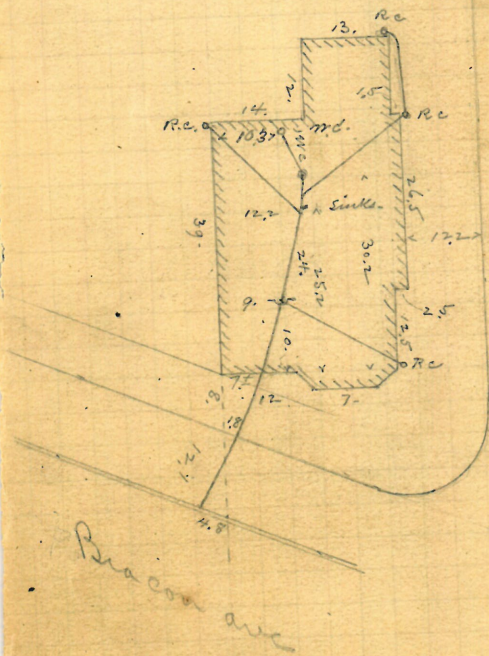
Enters 13 ft. W. of 1st. m.h. W. of Foster st.

35

Frank Read, M.L. Permit # 5918.

Opened, Oct. 20, 1890. Oct. 18/90.
Closed, Nov. 1, " Cut at curb.
Reopened Dec. 20-1918 " 10.4
Closed " 20-1918 5" pipe.
J. L. Hindle L. L.

Plotted.



17

Exeter 51.2 N. of 2^d m. h. s. of
Point st.

9. Dec. 2/90.

Oct-20/90.

87-88

Permit # 5920.

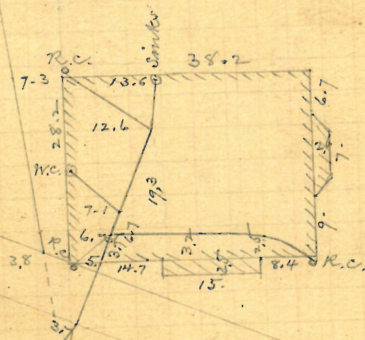
1890.

"Cute as a cat."

10.24

5" pipe.

Plotted



carb

Sewer

Enters 82.3 N. of 3^d m.h. S. of
Point St.

R-Dec-12/90.

Oct 22

John E. Silva,
#50 Armstrong ave.
Frank Read, D.L.
Permit #592

Opened, Oct. 27, 1890.

Relosed, " 28, "

Reopened Apr 12, 1927

Closed Apr

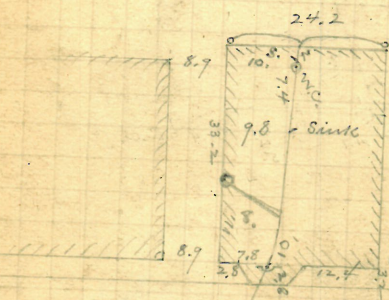
A. Cousins D.L.

" Cut at curb,

6" pipe.

10-3

Plotted.



Sewer

Enters 82.7 ft. E. of 1st.
m.h. W. of Ann St.

V. Dec. 2/90.

39
Oct. 22

Chas. H. Smith
2 W. Lillford St.
Bernard Brady, N.E.S.E. San Point
Permit # 5922

Opened, Oct. 23, 1890.

Closed " 27 "

Reopened Sept. 27-1908
Closed Sept. 2-1908
W. C. Chadsey S. L.

Cut at curb.
10.25 ft.

5" pipe.

Reopened Feb. 14/29

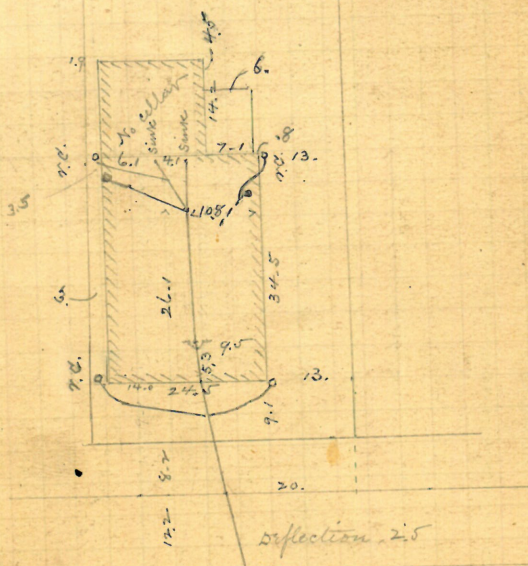
Closed " 15/29

Plotted Knight - S. L.

Reopened June 11, 1929

Closed June 4, 1929

J. S. Knight S. L.



Sewer.

Centers 33.8 N. of 1st n.h.
S. of Point St.

Nov. 12/90

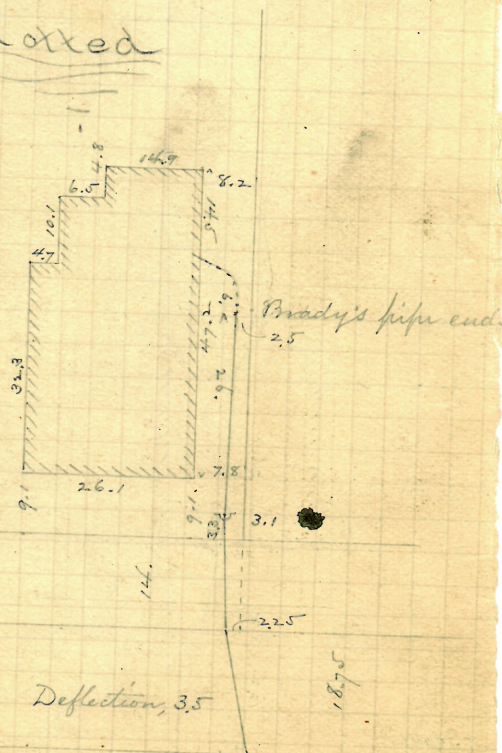
Caroline M. Hall, ^{Oct} 754 High St.
 Bernard Brady, D.C. Permit # 5923.

Opened, Oct. 27, 1890.

Closed, " 28, cut at curb, 10.8

Reopened June, 91, by B. Brady 5" pipe
 to add W

Plotted



Sewer

Enters 7.7 N. of 2^d m.h. S. of Alley

R. Nov. 12/90 (E. of 2nd M.H.W. of Alley 9)

Oct. 22.

Closed, " 30.

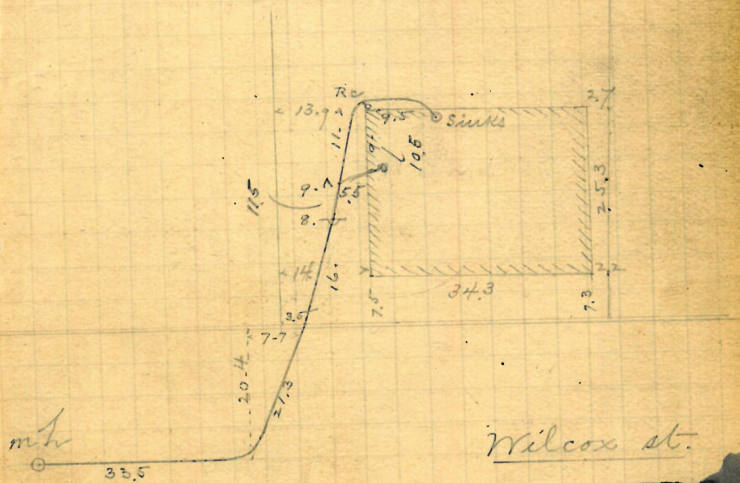
to seed " 19-1906

Mr. Dorsey & Co.

No curb set, but the curb at about the line of the curb is 9.7

5" pines

Plotted.



enters m.h. in W. River st lower
in range with center line
of Wilcox st.
Nov. 12/90.

Tallman's Lane
Richmond st. sec

Jason A. Blackmar, 1912
Perm

Permit No. 5925

Permi
Opened, Oct. 25, 1890.

Closed, " 30,

Cut at curb 7.6
5" pipe.

(Concluded on p. 126.)

Reopened May 29-1912.

Closed " 31-1912

W. Kenzie D. L.

Reopened Dec. 30-1912

Closed " 30-1912

W. N. Chadsey D. L. -

Plotted

Tollman's Lane

Richmond St. drawn
m h

V. Dec. 1/90.

Lornelia E. Greene

55-57 America St.

S.E. corner Atwell's
av.

S. Holmes Co., B.L.

Permit No. 5926.

Opened, Nov. 3, 1890.

Closed " 5 "

opened & closed Apr. 27, 1905 - Cut at curb,
Camiglietti St. - Cleanout -

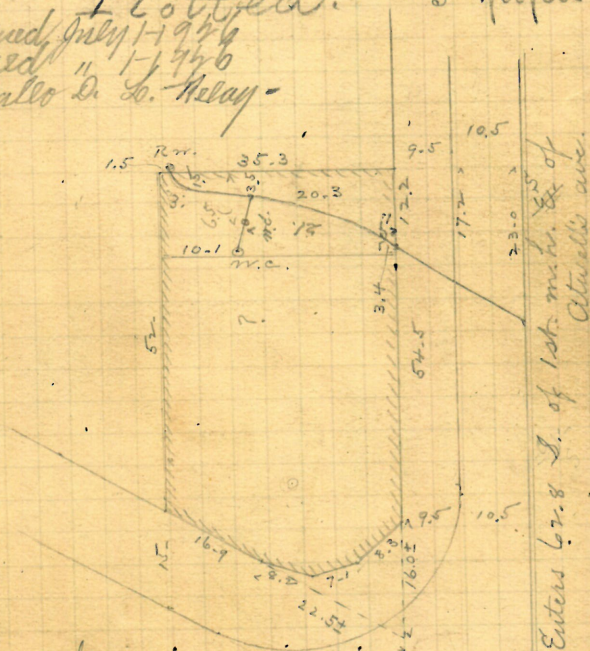
Plotted.

5" pipes.

Lined July 1-1906

red " 1-1906

Halls Dr. Co. Relay -



Halls ave.

R. Nov. 12/90.

Sewer

Merchants National Bank
 14 Westminster St.
 Thos. Phillips Ho., N.H. Permit No. 5927.

Opened, Oct. 28, 1890

Closed:

Reopened Feb'y 2-1904

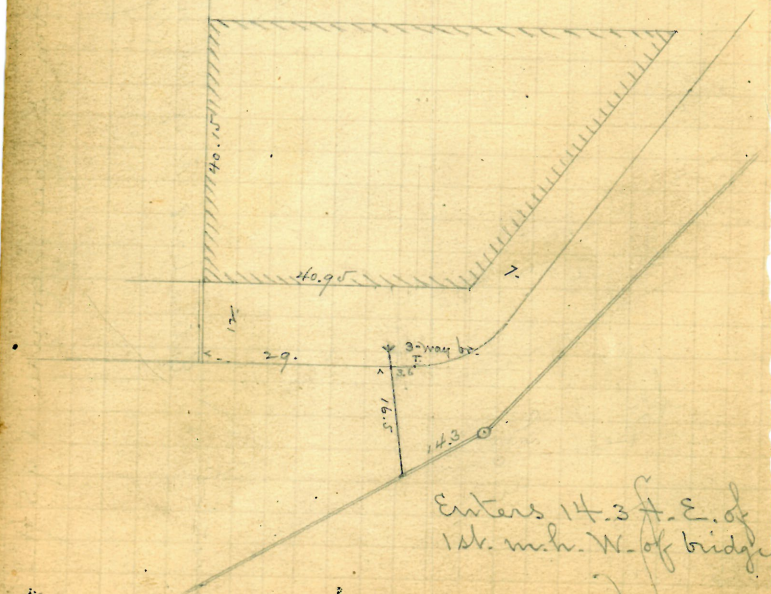
closed " 2-1904

B. A. Perry & Co. - Cleanout -

cut at curb, 6-8

6" pipes, (iron)

Plotted



R. Dec 20/90.

Alexander McDermott,
418-426 Atwell's Avenue, S.E. cor. Republic
Bernard Brady, D.L. Permit # 5928.

Opened, Oct. 30, 1890.

Closed, Nov. 6, " Cut at curb, (there

Adams St.

6" pipe.

Reopened March 24-1905-

Closed " 25-1905-

J. A. Donnelly D. L.

Reopened Aug. 5-1915

Closed " 3-1915

J. Deary D. L.

Reopened June 13/30

Closed " 17/30

A. L. Hood D.L.

Reopened July 17/30

Closed " 17/30

M. Madonna D.L.

Closed " 17/30

Closed " 17/30

Closed " 17/30

Closed " 17/30

Closed " 17/30

Closed " 17/30

Closed " 17/30

Closed " 17/30

Closed " 17/30

Closed " 17/30

Closed " 17/30

Closed " 17/30

Closed " 17/30

Closed " 17/30

Closed " 17/30

Closed " 17/30

Closed " 17/30

Closed " 17/30

Closed " 17/30

Closed " 17/30

Closed " 17/30

Closed " 17/30

Closed " 17/30

Closed " 17/30

Atwell's Avenue
enters sewer 11.7 South of old M. H. on
sub line of Atwell's Ave

Dec. 1/90.

Michael Reynolds + Wife,
 19 Armstrong Avenue.
 J. Frank Read, D.L.

Permit # 5929.

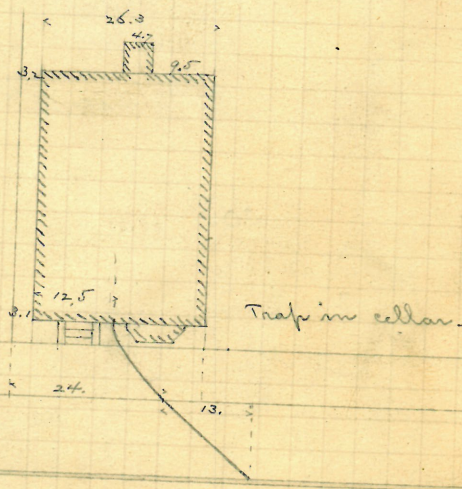
Opened, Oct. 30, 1890.
 Closed, " 31 " "

Cut at curb, 10.0

6" pipe.

Inside work previously laid by D.J. McCarthy without a permit, and covered over by a cement floor. Sand in trap.

Plotted.



Enters sewer 38 ft. E. of
 2d m.h. (at angle) E.
 of Porvok St.

R. Dec 20/90.

47
Oct. 28.

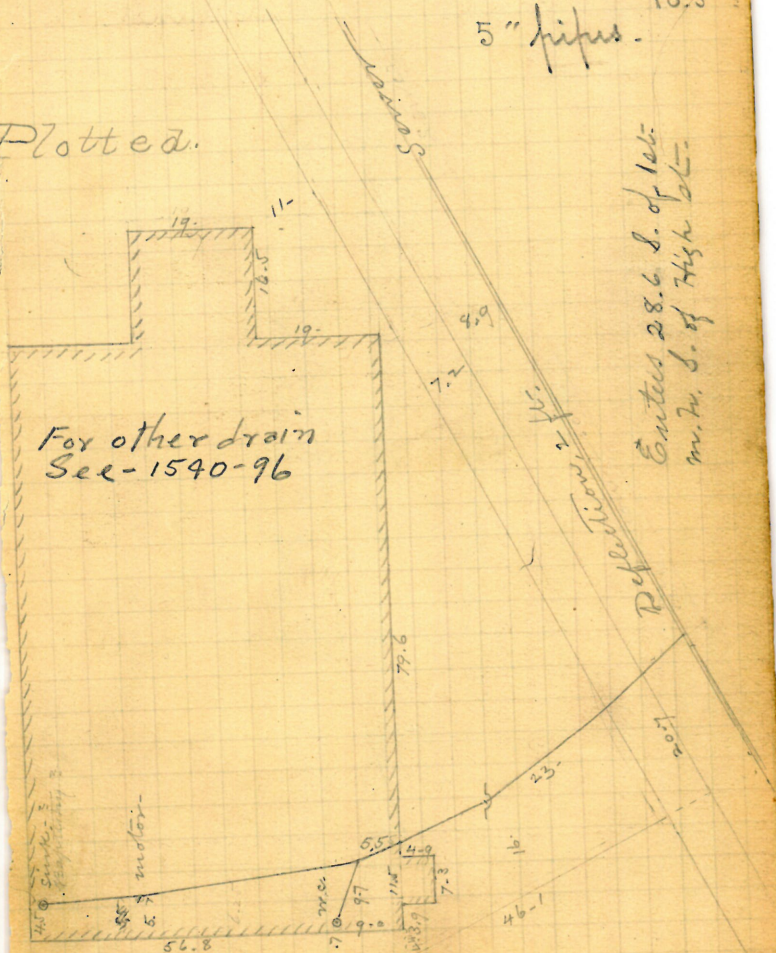
Opened, Oct. 31, 1890.
Closed, Nov. 3 "

Cut at cut
5" pipes. 10.5

Plotted.

For other drain
See - 1540-96

Entered 28.6 S. of 1st.
m. W. S. of High 2d.

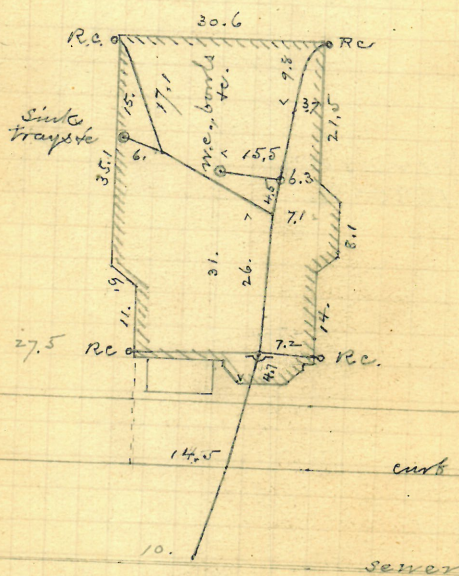


R. Dec. 1/92.

Alfred A. Harrington + wife.
 20222 Sycamore st.
 Jason A. Blackman, D.S. Permit # 5931.
 Opened, Oct. 31, 1890.
 Closed, Nov. 1 " "

Cut at curb, 10
 6" pipes.

Plotted.



Enters 68.3 ft. S. of
 2' mh S. of High st.

R. Dec. 27/90

GONE

51

Nov-1-

~~90NE~~
Susan E Potter
30 Miller St.

30 Miller St.

(Hammond St. - sewer.)

Bernard Brady, D.L. Permit #5934.

Opened Nov. 3, 1890.

Closed " 5, " Cut at comb, 4.3

5" pipes.

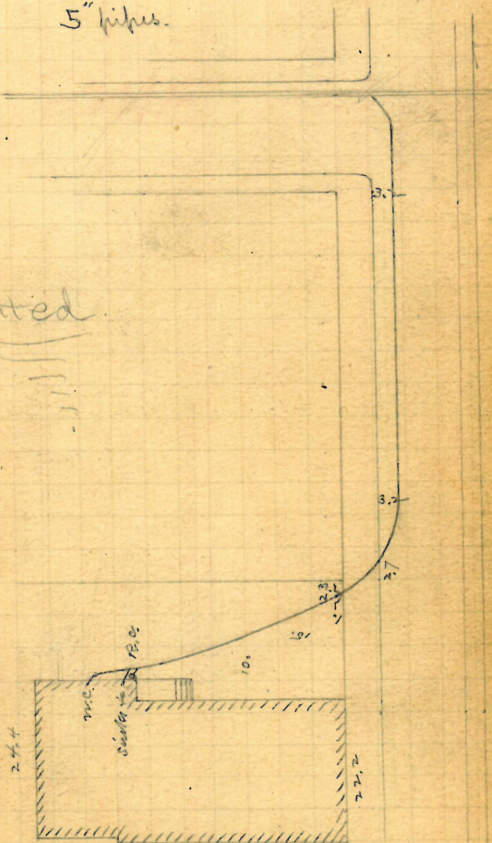
45-51-11

T. A. Garmino

Remove trap.

Private drain.

Plotted



Enters private drain from
Engine station to Hammond
St. sewer.

R. Dec. 1, 190

52

REMOVED

Patrick O'Brien

J. Frank Read, W.L.

177 South st.

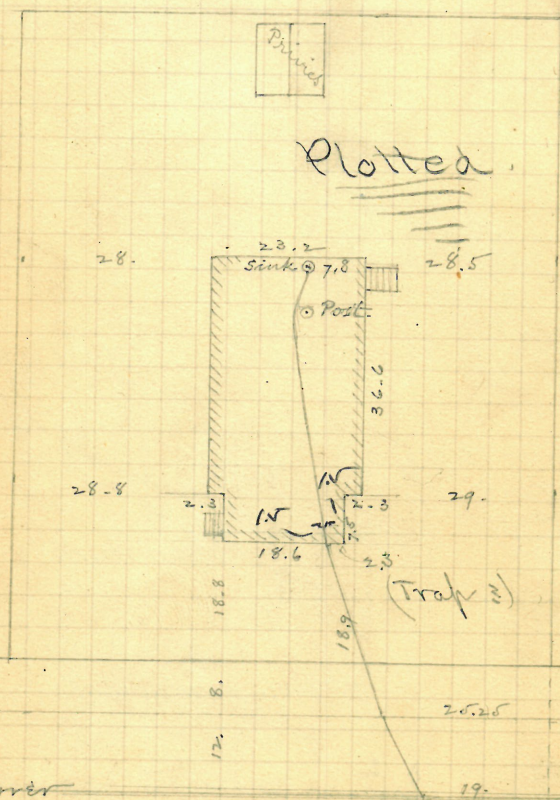
Permit #5935.

Opened Nov. 5, 1890

Closed " 7 " "

bark, 9.6

5" pipes.

Enters 11.9 n. of 1st.
m. h. n. of Hopkin st.

R. Dec. 2/90-

Nov. 5

4,82

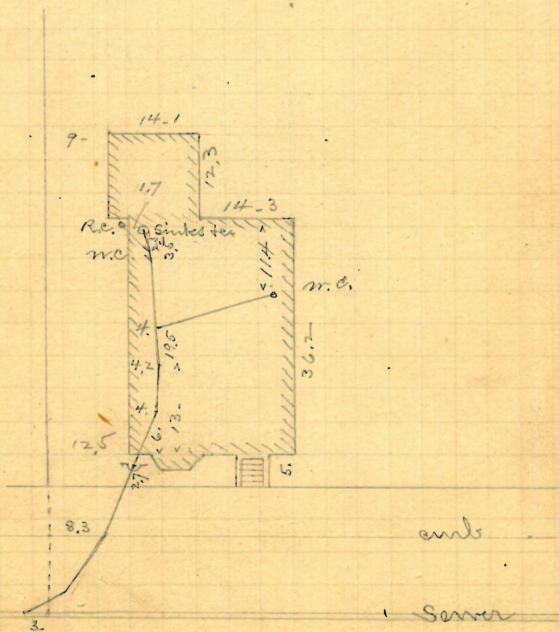
Permit # 5936.

closed, " 14, "

Reopened & Closed Oct. 24th 98
H. Murray D. L.

cont at cont. 9.2
6" pipes.

Plotted.



Enters 72.4 E of 2^d m h E. of Camp st.

R. Dec. 1/90.

REMOVED

55

Nov. 6

The Friendship St. Baptist Society

Friendship St & cor. of
Frank Read, D.L. Prince

Permit # 5938.
Opened, Nov. 7, 1890.

Closed " 8 " cut at curb, 9-3

opened Oct. 16-1901

Deary L.S. - Cleanout -

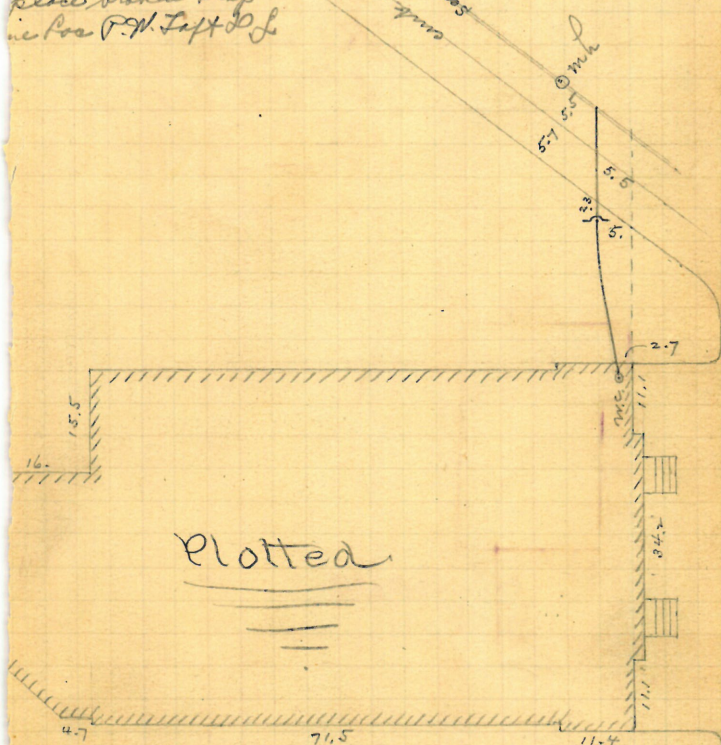
Oct 20 1948

Oct 21 1948 10/20/48

place broken trap

in Cor P.W. Left S.L.

5" pipes.



Plotted

Enters 7.1 ft. N. of 1st m.h. S. of
Friendship St.

R. Dec. 2/90.

56

PLAN #168-2

ISABELLA F. CALDER
#3 BURRS LANEIsabella F. Calder + Mary K. Percho
3 Burrs Lane.

John Keogh, D.L.

Permit #5939

N
W-E
SOpened, Nov. 7, 1890.
Closed " 8,

look at curb,

(Keogh's return says 5")

Reopened June 11-1912

Closed " 12-1912

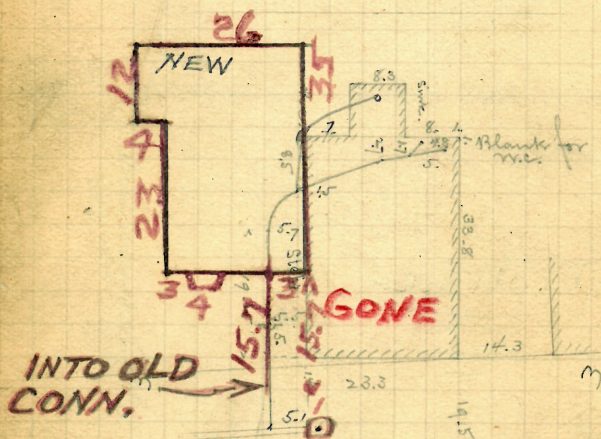
W. M. Chadsey, D.L.

CARD
TYPED

Plotted

6" pipes.
OPENED 9-7-78

CLOSED 9-7-78

OL. KEVIN POND
REPLACED6" V.C. INTO
OLD CONN.CUT 7'
IN SP. V.F.M.

#3 BURRS LANE

Enters 150 ft. E of m.h. in N. Main St.

R. Dec. 20/90.

There is no curb or apparent grade, but cut at least 9 ft. and at top is 7 ft.

Sophia Ingueta Porcum

357 Benefit,

L.C. Co. Williams

John Keogh, D.R.

Permit # 5941.

Opened, Nov. 8, 1890.

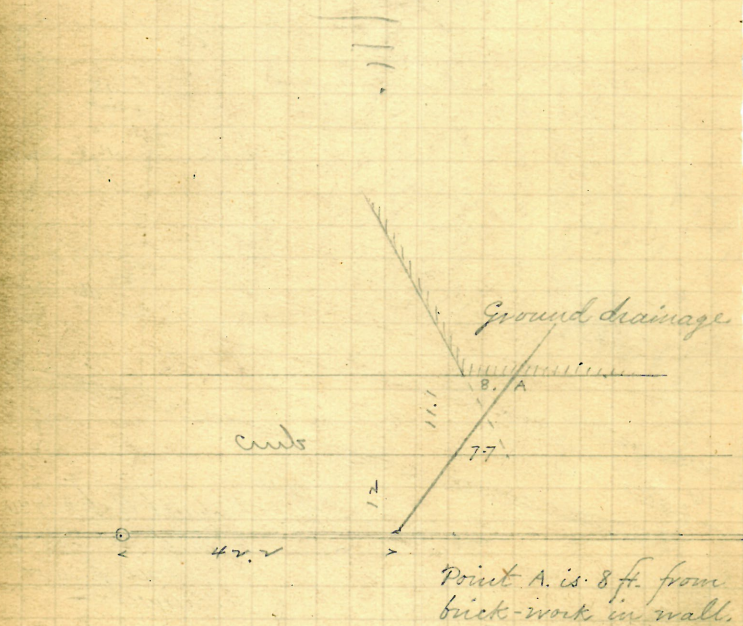
Closed, " 11,

For in front of Spencer Cut at curb, 9 ft.

Wick General Dec. 7, 1900 6" pipes.

See BK No 2326 pg. 10.58

Plotted.



Enters at 42.2 ft. E. of m.h. at angle of st.

Jan. 3/91.

Nov. 7

Sophia Augusta Room,

357 Benefit St.,
N.E. cor. Williams

John Keogh, W.L.

Permit # 5942

Opened, Nov. 8, 1890.

Closed " 8, "

Cut at curb, q.b.
6" pipes.

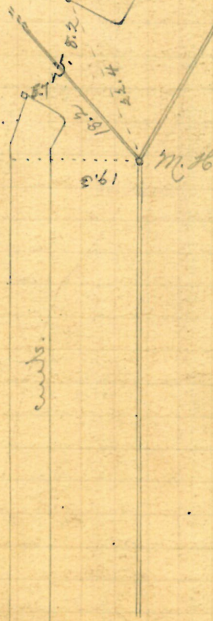
Barr

Required Dec. 1944
 Closed " 1944
 J. B. Roe & S.
 and sketch on original
 Satch. No. 58

Plotted



House



Williams Street

Enters at m.h. in
angle of st.

A trap was set here within street limits, by order
 of Alfred Stone, in the absence, and without
 the knowledge of the Inspector or Contractor.
 Same reported in letter.

R. Jan. 3/91.

Removed

61

Nov. 8

Church of The Immaculate
Conception

102 West River St.

N.W. corner Capwell.

John Keogh, A.L., (to building)
Vermont #5944.

Opened, Nov. 10, 1890.

Closed " " "

cut at curb, (?)

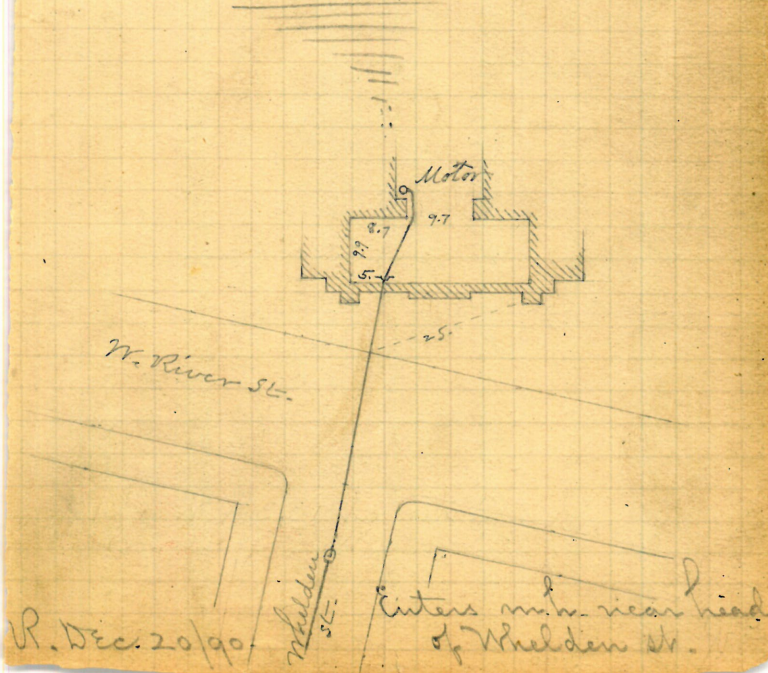
Reopened for extension
inside by O'Connor,
Nov. 13, 1890.

Closed Nov. 14, 1890.

"pipes."

Keogh says 5"
in his return.

Plotted.



62

1/P 168
31

Est. Wm. A. Munroe,
254-266 208 Transit st., N.W. cor
34 Governor.

J. Frank Read, D.L.

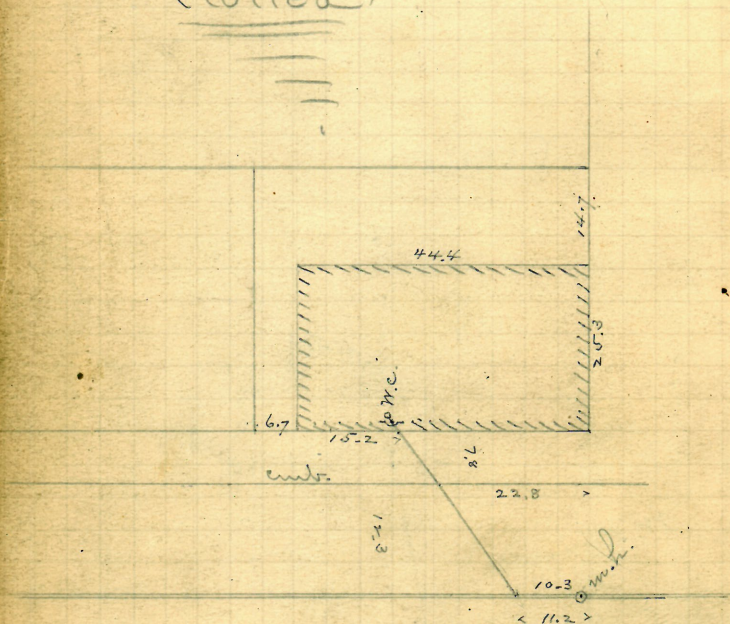
Permit # 5945.

Opened, Nov. 10, 1890.

Closed, " 11, "

but at curb, 0

5" pipe.

Plotted

Enter at 10.3 ft. W. of 1st.
m.h. W. of Governor st.

R. Dec. 2/90.

Nov 8

Horace L. Hanson,
 132 Broadway
 Bernard Brady, 41. 14. 60 Battery

Opened, Nov. 13, 1890.
 closed " 15. "

Reopened & closed Oct. 8, 96
 J. A. Blackmar & L. 5 1/2 pipes.
 at curb 9.8

Reopened 7/20/60

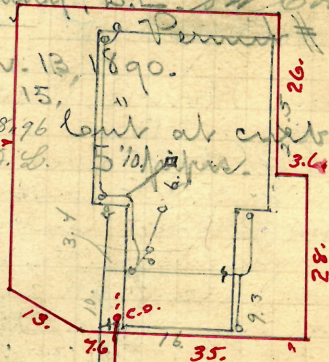
closed 7/25/60

D.L. R. Trotter

See also 578

135

Battery st



Reopened 7 May 23.
 closed 25.1
 J. P. Buddigan

Plotted

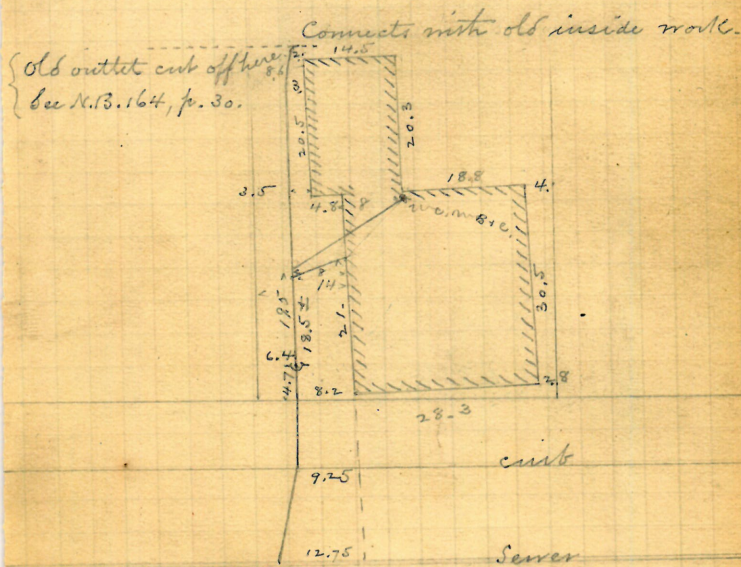
Enters at 45 ft. W. of m.
 h. at E. curb line at
 Battery St.

R. Dec. 1/90.

65
Nov. 10

George H. Peck
320-334
Wickenden St.
JASON A. BLACKMAN, D.L.
Permit # 5948.
Opened, Nov. 11, 1890
Closed " 15, " "
Reopened Nov. 23, 93
Closed Nov. 24, 93
W. Lyons D.L.
cut at curb, 9.5
6" pipes.

Plotted



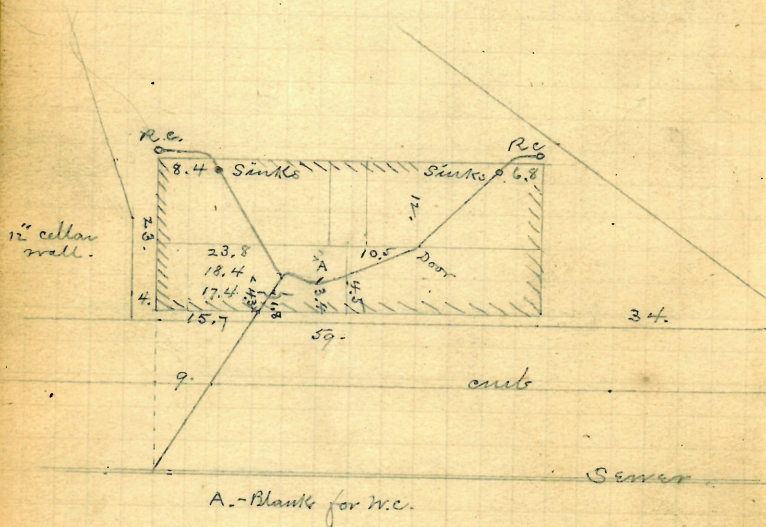
Enters at 101 A.E. of
m.w. at Thompson
St.

R. DEC. 27/90

Herbert E. Dodge
 322 + 324 Charles St.
 Jason A. Blackman, D.L.
 Permit # 5949.
 Opened, Nov. 14, 1890.
 Closed, " 18 ± "

cut at curb, 10³/₄ ft.
 6" pipes.

Plotted



Enters 111 ft. N. of
 1st m. N. of
 Ashburton St.

TR. Dec. 27/90.

x

W.

P. 158
33

67

Nov.

13 Eugene M. Sawin,
9-11? Wesleyan Avenue.

Frank Road, L.L. Permit # 5950

Opened, Nov. 13, 1890.

closed " 15, "

Oct 20 / 32

Cut at curb, 10 ft.
6" pipes.

Greenig St.

asmt

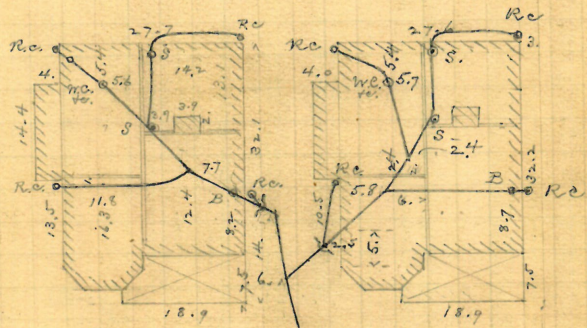
opened - Oct 12, 1933

losed - Oct 12, 1933

U. Gammis clear
in sidewalk Plotted.

Reopened Mar. 30, 1932

closed " 31 /
R. German St. Chan



Enters 88.7 ft. W. of first
m.n. W. of Taylor St.

R. Dec. 29/90

68

Nov. 11

Narragansett Electric Lighting Co.
 J. Frank Read, D.L. Edm. str.
 Permit No. 595
 Opened, Nov. 14, 1890
 Closed, " 20+ "

For E. Work done under
 this permit Oct. 18, 1897
 See Bk. No. 206, No. 92

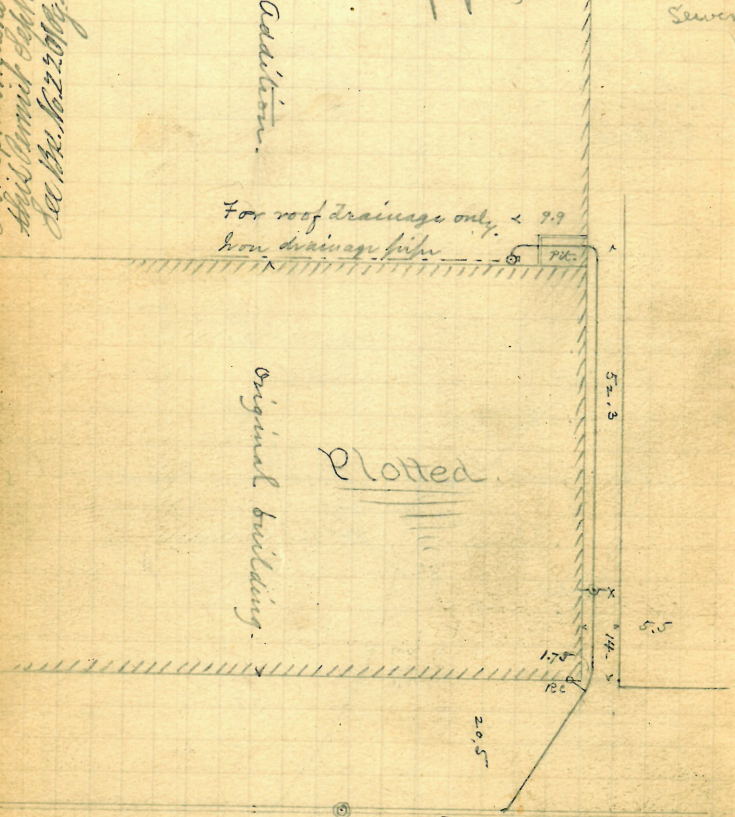
but at curb
 8" pipe, throttles to 6" at
 Sewer

Addition

For roof drainage only, < 9.9
 from drainage pipe

Original building

Plotted



Enters 24.5 ft. W. of
 2' m. h. W. of harbor
 line.

R. Dec. 12/90

Nov 13

Bernard Porady, D.L.

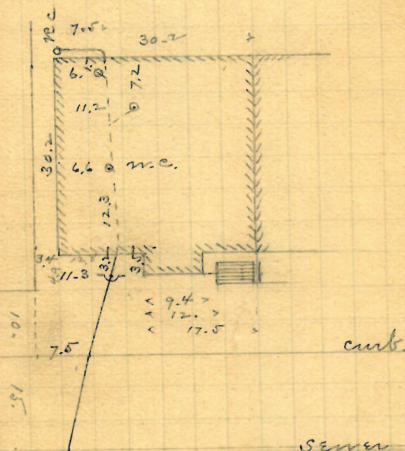
Permit # 5952

Opened Nov. 18, 1890.

Closed " 19. "

but at curb 9.5
6 inches pipe.

Plotted.



Enters 77.5 h. H. of
m. h. at Kenyon st.

VR - Dec. 12/90

Nathan B. Horton
 10 Arthur ave. (Xth connection)
 Bernard Brady, D.I.

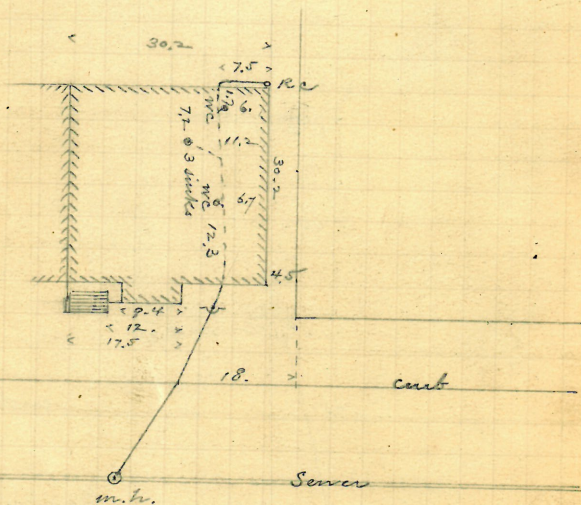
Opened, Nov. 17, 1890.

Closed, " 19, "

Permit #5953.

but at curb, 9
 6" pipes.

Plotted.



Enters at ²Xth m.h.
 N. of Kenyon str.

R. Dec. 20/90.

REMOVED

71

Nov. 14

Harriet A. Tyler High. 3
643 ~~High~~ St.

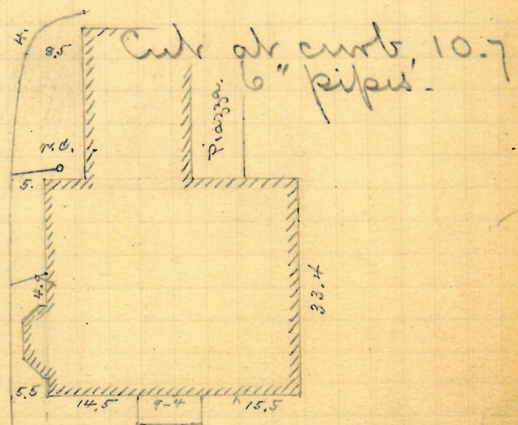
Jason A. Blackman, W.L.

Permit # 5954

Opened, Nov. 17, 1890.

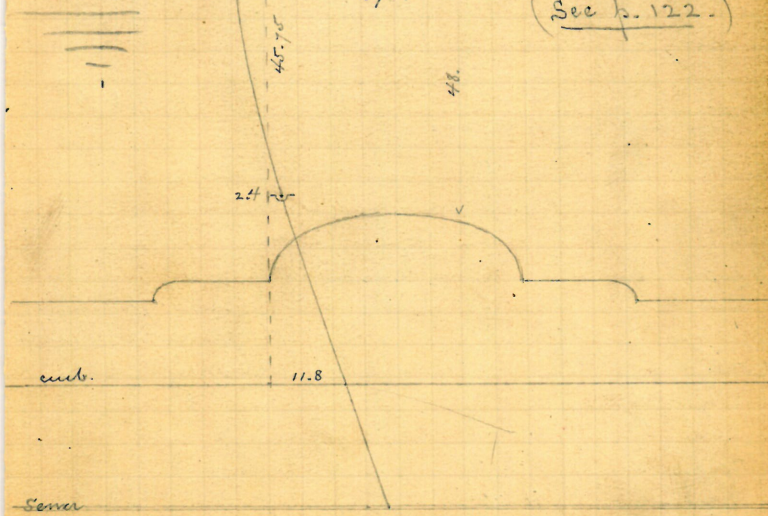
Closed,

W. J. A. Blackman, W.L.
Open to Nov. 14, 1910
See p. 121, 122, 123



Plotted.

(See p. 122.)



Dec. 31/90

Enters at 87 ft. W. of
manhole on E. side of Hammond
St.

R. Austin Robertson Jr. + wife.
J. Frank Read, D.L. 12? Stinson ave.

Permit = 5955.

Opened, Nov-15, 1890

Closed " 22, "

Received April 20-1908

Closed " 23-1908 bank at curb, 10.

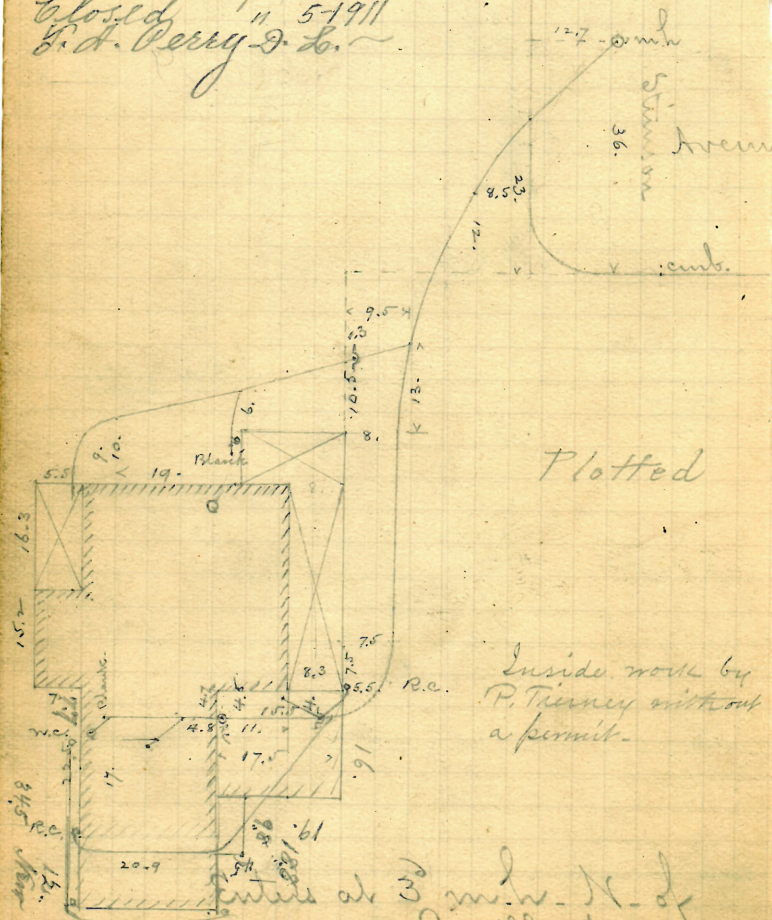
J. Leary D. L. - Relay -

6" pipe.

Reopened Sept 2-1911

Closed " 5-1911

L. A. Perry D. L.



Inside work by
P. Tierney without
a permit.

Entered at 3 m. N. of
Angell St.
-oo-

-R. Dec. 12/90.

Nov-14

Emery A Kimball,
25 Parade St.
Frank Read, A.L.
Permit # 5956.

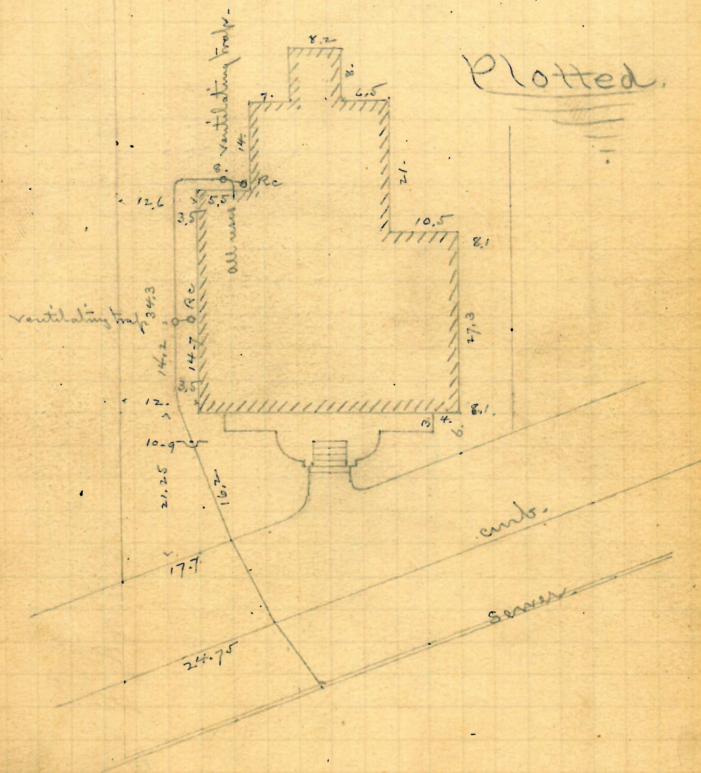
Opened, Nov. 17, 1890.

Closed, " 19, " "

Reopened - Aug 15, 1940

Closed - Aug 16, 1940

F. Scolding - Cl. - relay. but at curb, 10.2
5" pipes.



Enters at
75.3 S. of 1st. m.h.
S. of Oak St.

R. Dec. 12/90.

Nov. 1

Mary W. Chapin, wife Geo. W.
 11 5 Parade St.
 Frank Read, Wm. Permit # 5957.

Opened, Nov. 17, 1890.

Closed

" 19

Reopened Sept. 5-1919-

Closed

1919-

C. W. Framiglietti D. L.

Cleaned

Reopened Nov. 15-1919-

Closed " 26-1919-

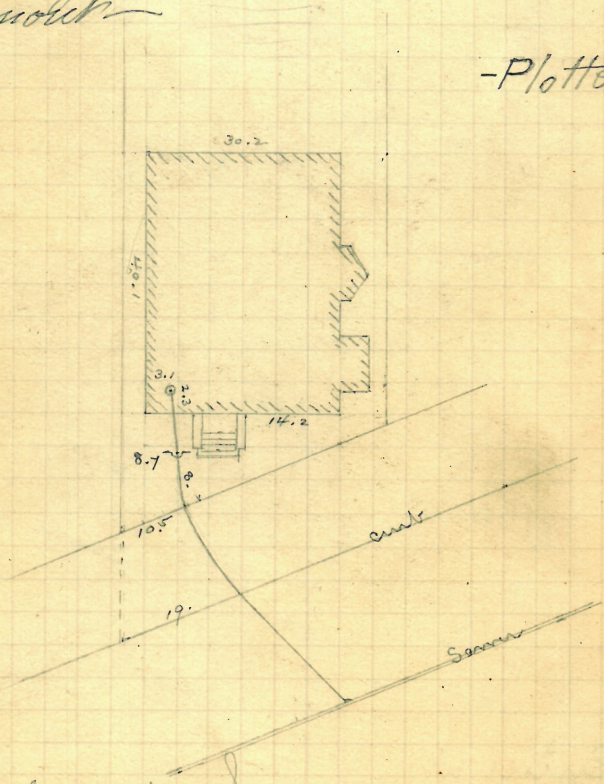
C. W. Framiglietti D. L.

Cleaned

Cut at curb, 1

6" pipes.

-Plotted



Enters

129.3 ft. from 1st. m.h.

above High St.

R. Dec. 20/90-

75

Nov. 15.

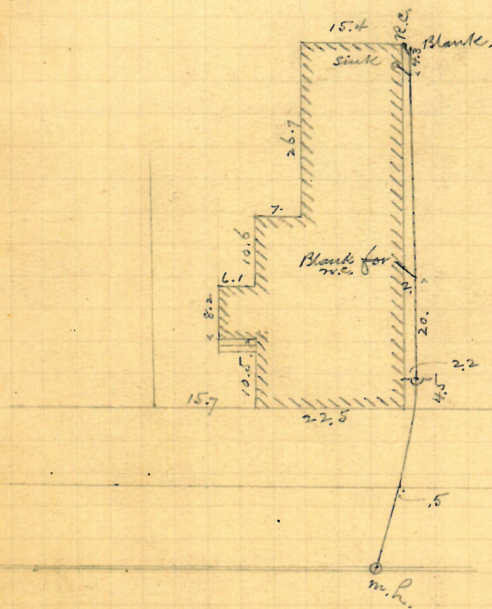
Hiram W. Handy and
Mary W. Miller,
23 East St.

Hiram S. Read, Jr. Permit # 5958.

Opened, Nov. 20, 1890.

closed, " 22, " but at curb,
10. +
6" pipes.

Plotted.



Enters at 1st. m.p.
N. of Transit St.

U. Dec. 20/90.

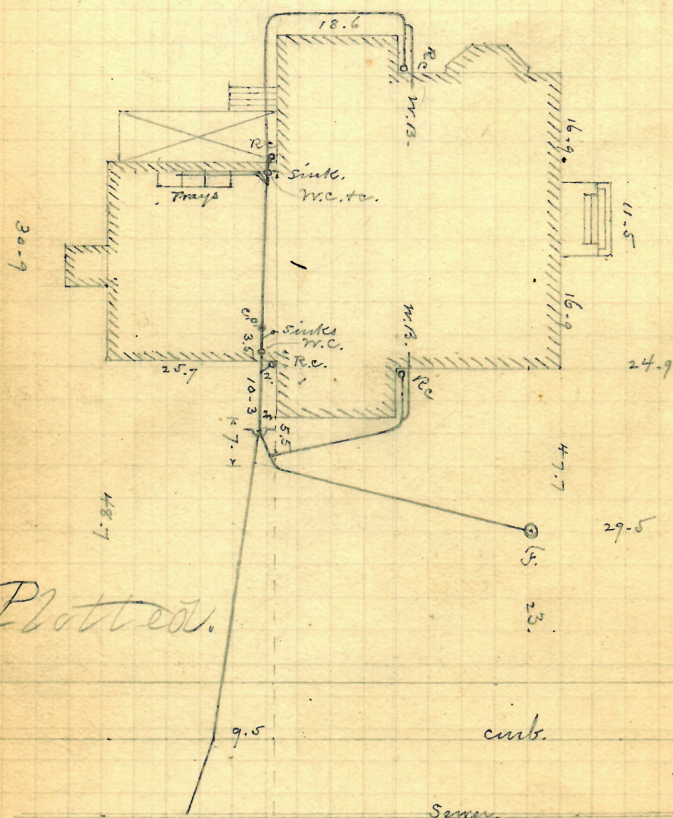
Emily P. Reynolds, wife of Wm. H.
T. Phillips Co. 1860 # 243 Broadway
Tobey St.

Permit # 5959.

Opened, Nov. 17, 1890.

closed, " 26,

Ent. at curb, 10.3
6" pipe.



Plotted.

Enters 160.1 ft. S. of m.
at Grove St. left.

R. Dec. 20/90.

Juliette L. Seymour
 112-114 Doyle ave.
 John Keogh, D.L. Permit # 5960.
 Opened, Nov. 19, 1890.
 Closed, " 22, "

opened April 1-1903

closed " 3-1903

J. Bozz D.L. Relay

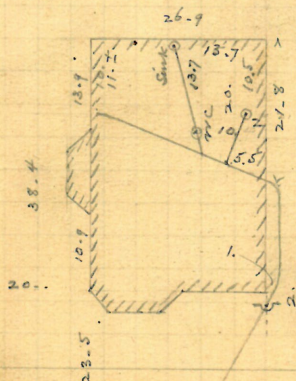
opened May 26-1904

closed " 28-1904

Atello D.L. Cleanout

Cut at curb, 11.4
 5" pipes.

Plotted



Enters 43.3 ft. E. of
 3 1/2 m. N. E. of Camp str.
 Camp str.

R. Jan. 3/91.

Nancy D. & Helen M. Norton.
 3-14-16 4-6 Parade St.,
 N.W. cor. Waterloo.

J. Frank Read, D.L.

Permit # 5961.

Opened, Nov. 19, 1890.
 Closed " " "

Reopened Nov 22-1900

Closed " 23-1900

J. Deary & Co. Cleanout

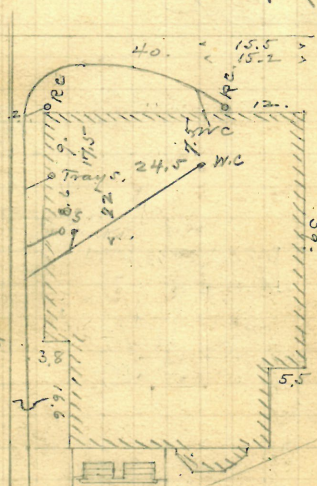
cut at curb, 10.25

5" pipes.

P. 169
 46

Plotted

Reopened Jan'y 27-1910-
 Closed " 28-1910-
 J. W. Longwood & Co. Cleanout.
 Reopened May 21-1912
 Closed " 22-1912-
 W. Lyons & Co.



curb
 Parade St.
 sewer

Enters 135.5 ft. from
 W. m. h. above High St.

R. Dec. 12/90.

x 0 - $\frac{167}{48}$

79
Nov-18

Heirs of J. L. Spencer,
55 Sycamore st.,
N.W. cor. Willow.

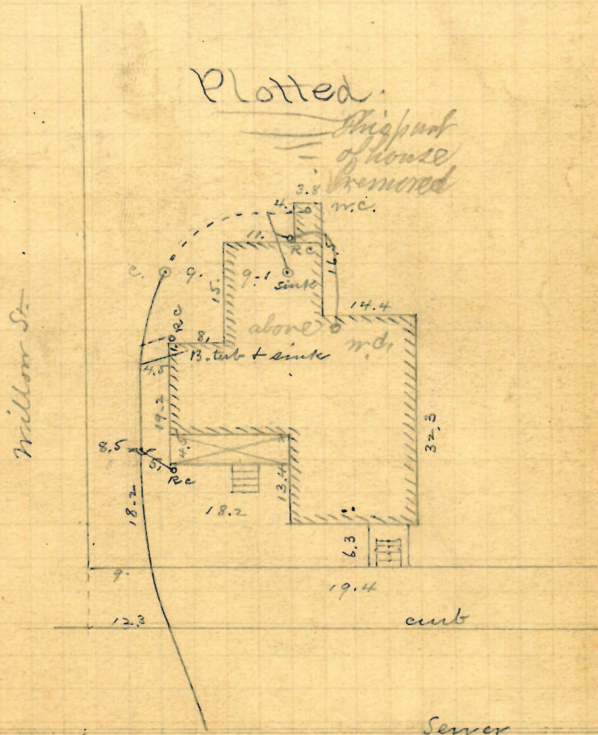
J. Frank Read, D.L. Permit # 5962.

Opened, Nov. 26, 1890.

Closed, Dec. 2, "

~~Opened July 28, 1904~~
~~closed 11-29-1904~~
~~1.00 m. h. S. of~~

cut at curb, 10.2
6" pipes.



Enters sewer 10 ft. S.
2d. m. h. S. of Oak st.

R. Dec. 26/90.

Nov. 18

Estate Francis E. Stead
54 + 68 Friendship St.,
S.E. cor. Eddy.

J. Frank Read, W.L. Permit # 5963.

Opened, Nov. 22, 1890.

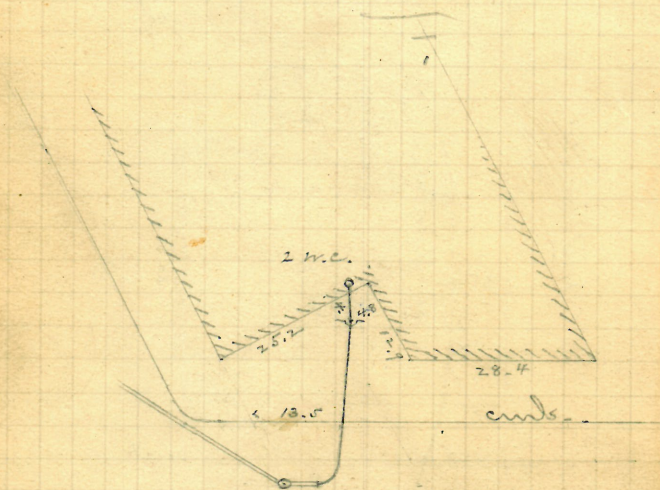
Closed, " " "

{ For Ex. work done under this permit Oct. 90 See Box 998
W. H. Chadsey & Co. Cuts at ends, 6.2

Reopened April 26-1902
Closed " 28-1902 5" pipes.

W. H. Chadsey & Co. - Clearcut

Plotted



Enter at dead end
of sewer in Eddy St.

R. Dec. 26/90

Permit # 5964.

Opened, Nov-19, 1890.
Closed

Reopened Sept-16, 98

Closed " 22nd 98 Cont ab cont, 10.5
W. J. Hoag, D. S.

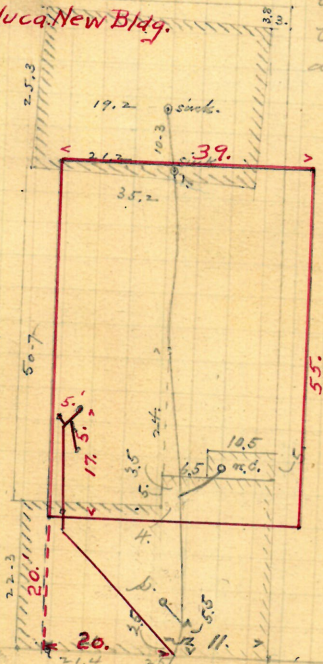
Reopened 4/1/63

5" pipes -

Closed 4/1/63

D.L. LColaluca New Bldg.

Reopened Jan'y 22-19
Closed " 24-190
D. Wm Phail D. L.
Clean out ~



Plotted

cubs.

Saver

Enter at 128.6 ft.
W. of the manhole
just E. of Ambrose st.

R. Dec 6/90.

Bernard Brady, D.L. 430

430' Friendship st.

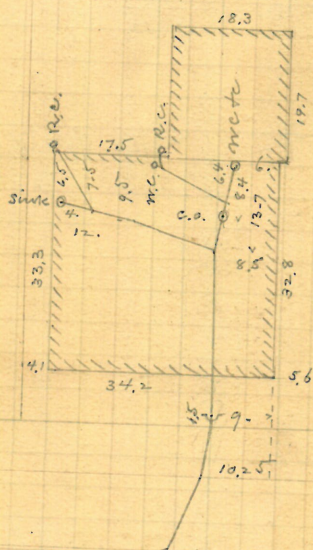
Permit # 5966.

Opened Nov-19, 1890- Per

Closed, " 22 "

Cont. at emb, 10.3. ±
5" pipes.

Plotted



Inside meas-
urements from
8" wall.

Enters 105. ¹ H. W.
of m. h. just E. of
Somerset St.

R. Dec. 20/90.

Nov. 18

Miles McKee

15-17 ~~3~~ Robinson st.

Bernard Brady, D.L.

Permit # 5967.

Opened, Nov. 21, 1890.

Closed " " "

Reopened Nov 20 "99

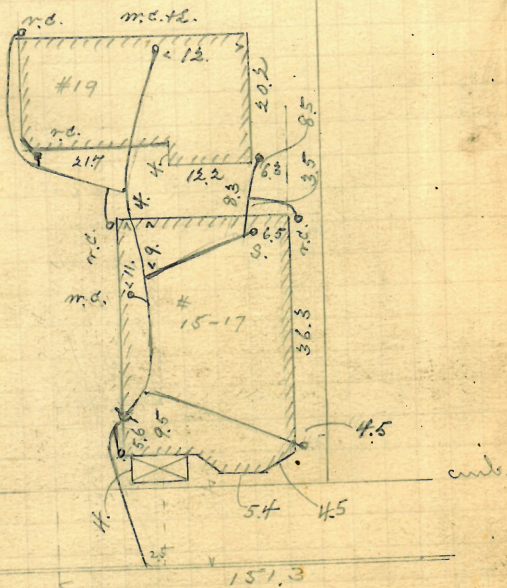
Closed " 23" 99

A. Quillo D. L.

bank at curb, 10-1

5" pipes -

Plotted



Enters 137.64 W.
of m. h. at Gay st.

R. Dec. 20/90.

GONE

85

Nov-19

Fred E. Perkins

Tobey St.

F. Frank Read, D.L.

Permit # 5968.

Opened, Nov-24-1890

Closed

Reopened July 22-1920

Closed " 23-1920

G. Riccietello, D.L.

Reopened Apr. 23-1923

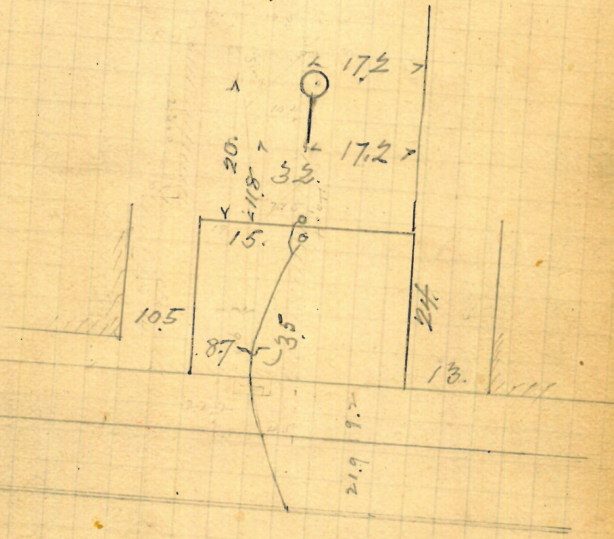
Closed " 24-1923

H. S. Longfellow, D.L.

bank at curb, 10.5-

5" pipes.

Plotted



Enters 149 ft. S. of
3d m. W. of
Roadway. (Right hand.)

V. Dec. 29/90.

Mary D. Hill, Brown St.
Cushing St. sewer.

John W. Furlong, D.L.

Permit # 5969

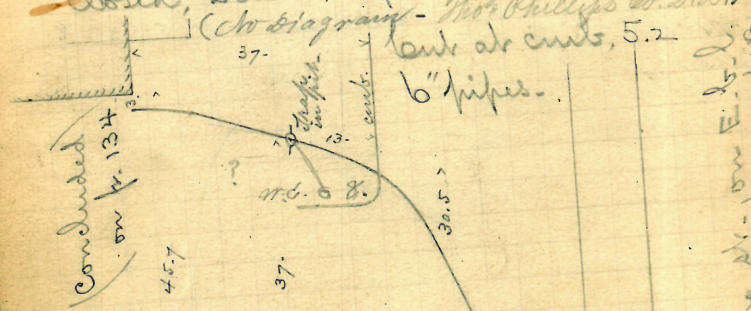
Opened, Nov. 25, 1890.

Reopened mch 24/94

Closed, Dec. 13, 1890.

Closed " 30/94

(No diagram - Not Phillips Co. D.L.)



Reopened May 15/1905
Closed " 15/1925
P. R. Thomas, D.L.

Plotted.

Reopened May 15/1905
Closed " 15/1905
W. H. Schaefer, D.L.

Reopened mch 24/94
Closed " 30/94
Not Phillips Co. D.L.
Reopening bad work, rebuilding main line
P.R. Thomas, D.L.

Cushing St.
R. Dec. 20/90.

P. 161-25

87

Corp of Brown University
Manning St.

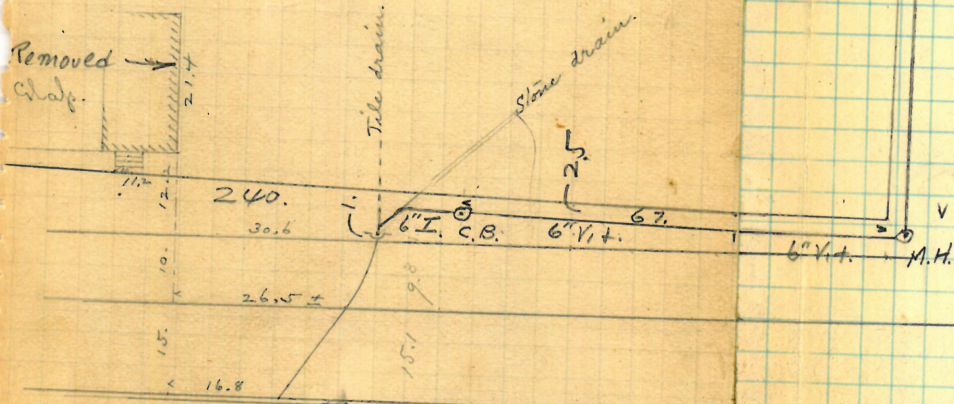
J. Frank Road, No. 240.

Opened, Nov-24, 1890.
Closed, Dec 12, "

Permit # 5970

Resealed - Aug 16, 1939
Closed - Sept 1, 1939
P.W. Taft - New Ten Courts
6" Vit. - 6" Iron.
Cont at curb, 10.4
6" pipes.

Tennis Courts.



Enters 62.4 E of 2
m.w.E. of Brook.

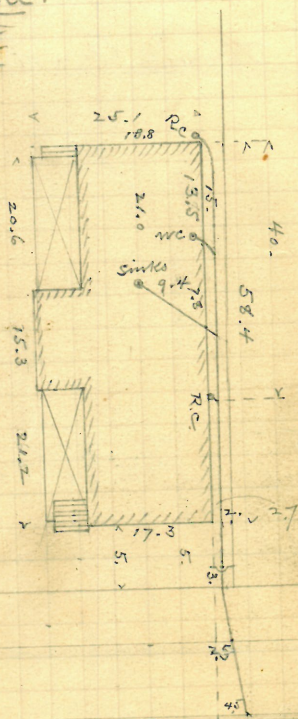
R. Dec. 26/90.

X

88
Sophia W. Sweeney and
Abby A. Evans
46 Davis St.
John Keogh, D.L. Permit # 5971
Opened, Nov. 22, 1890.
Closed " 24 "

cut at cut, 10.5
5" pipes.

1



enlo.

Sewer.

Enters at 106.5 h.s.
of m.h. 2.5 N. of N.E.L.
of common str.

R. Jan 3/91

~~Removed~~

89
Ver-21

129 Franklin St. ~~11 Lemon St.~~
J. A. Blackman, D.L.

Opened Dec. 5, 1890. Permit #5972
Closed " 20, "

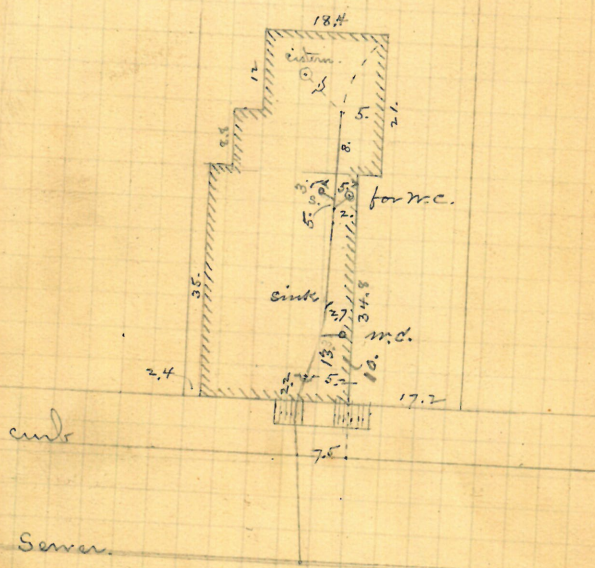
Reopened & closed Oct. 17-1900

M. A. Chadsey D. L. - Cut at curb, 10.25

Reopened Oct. 23-1906 5" pipes.
Closed " 23-1906

D. Holmes D. L. -

Plotted. Ent 12



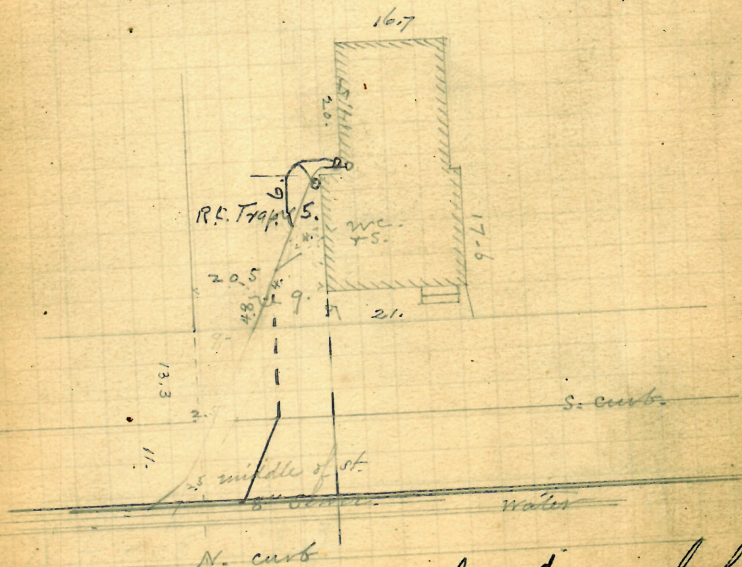
Enters 37.7 ft. N.
of 1st. main. S. of
bottage st.

R. Dec. 27/90.

Frank Read, N.L. Permit # 5973.
Opened, Nov. 25, 1890.
Closed, " 27 "

by J. A. Blackman,
Received Aug 2, 1929

Respined July 26/1927
Closed July 26, 1927
H.W. Allinson, D.C.
Respined 3/23/55
Closed 3/23/55
G. Nolan: remove trap



Enters sewer 86.30 West of 2nd manhole
Brook St

Nov. 22

Harman Boas,
Bernard Brady, Jr.

4 Oak St.

Opened, Nov. 24, 1890. Permit # 5974.

Closed, " 29 "

Reopened mch 31, 96

Closed, " 31, 96

H. M. Goldrick D. L.

Cleanout

lent at curb, 11.0

6" pipes.

For rear house

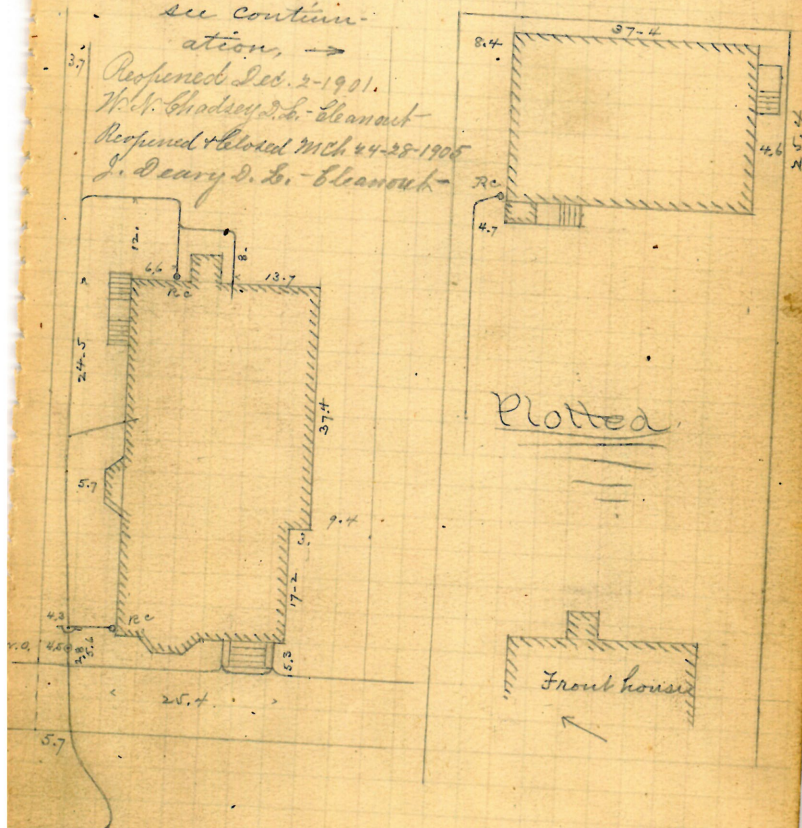
see continuation, →

Reopened Dec. 2-1901.

W. F. Shadley D. L. - Cleanout

Reopened & closed mch 4-28-1905

J. Deary D. L. - Cleanout



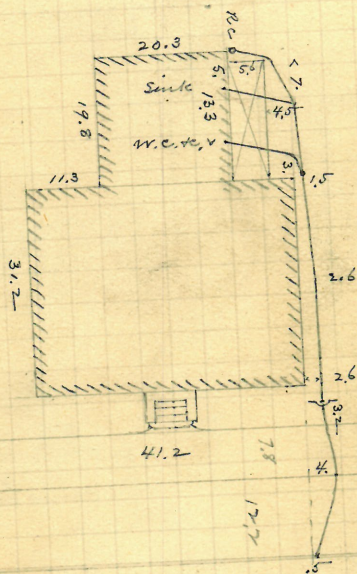
Enters 98 ft. from
main. at Parade st.
Blue book says 95 ft.

R. Dec. 26/90.

Opened, Nov. 28, 1890.
Closed, Dec. 1/2 "

Cut at circ, $9.5 \pm$
5" pipes.

Plotted



Hubbard St.

Enters 91 ft. from 2^d
m.h. above common

R-Dec-12/90.

Manfred Chapin, wife & 2 yers.

J. F. Read, S.L. 23-25 5th Oak St.
Permit #5976

Opened, Nov. 25, 1890.
Closed, Dec. 17, "

Reopened July 12, 1929

Closed July 12, 1929

Reopened July 15, 1936

Closed July 15, 1936

H. Madonia - Clear

Reopen Mar 28, 1945

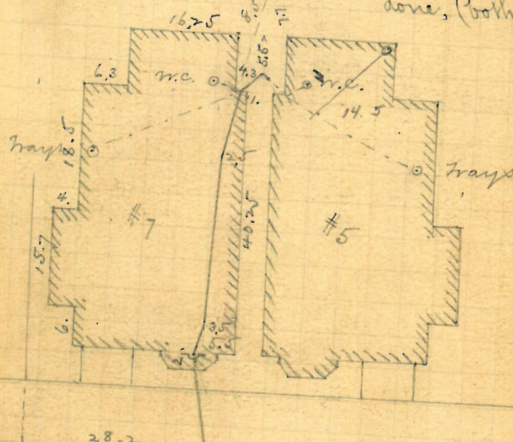
Closed Mar 28, 1945

add work to be done

at the 10 ft.

Cut at curb, 10.4 ft.
5" pipes.

Inside work previously done, (both houses)



Sewer

Enters 85.8 ft. from
2nd m.h. above Parade st

R. Dec. 26/90

Geo. W. Williams.

124 Oak St.

f-Frank Read, D.C. Permit #5977.

Brend, Nov. 25, 1890.

Closed, Dec. 31 "

7/23 Reopened July 3 1943

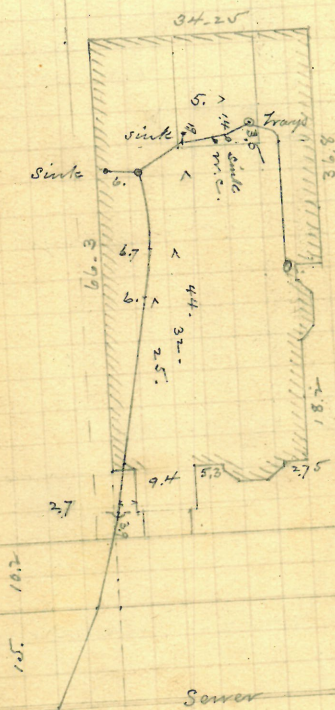
3. Reopened July? 1943
Closed - July? 1943

A. Gizzardi - add.

bank at curb, 10.2 ft.

6" pipes -

plotted



Serve

Enters 63.4 ft. above
3d m.h. above
Parade st.

R. Dec 31/90.

95

Var. 24

Emeline E. White

(408-420?)

J. Frank Read, N. L. S. #1-3

Opened, Dec. 5, 1890.
Closed, " 6, "

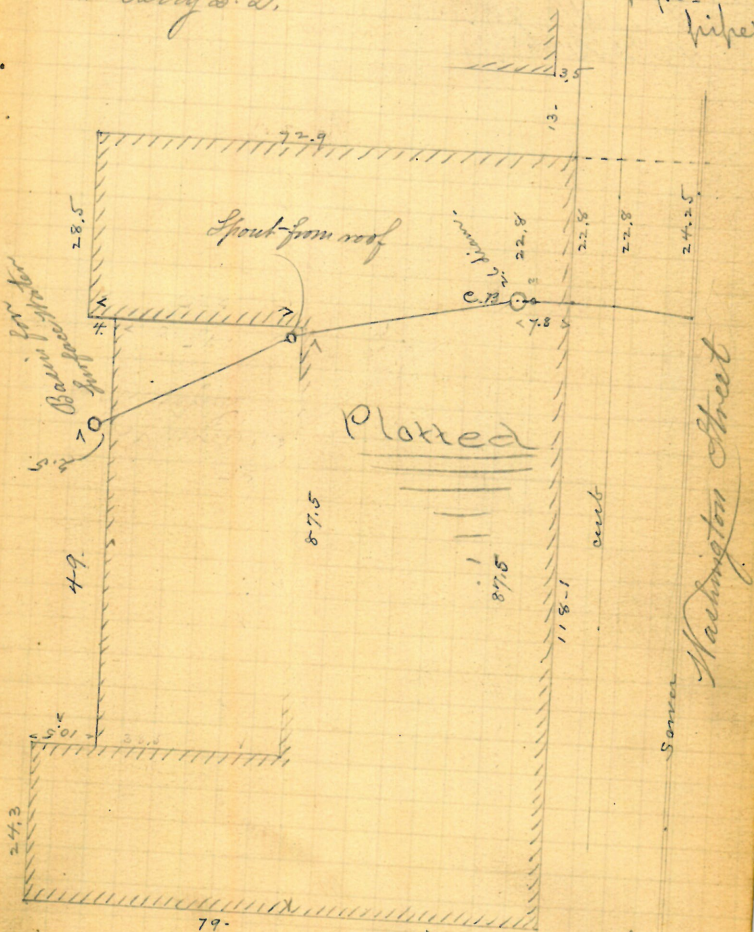
Permit #5978

Reopened Nov. 20, 1914

Closed Nov. 20, 1914

E. C. Berry & L.

Leak at curb, 9.8.
pipes.



R. Dec. 29/90.

Enters 124.5 ft. W.
of 1st. m. h. E. of
Lafayette st.

96

Removed

Nov. 24.
1890

Andrew Anderson

39-41

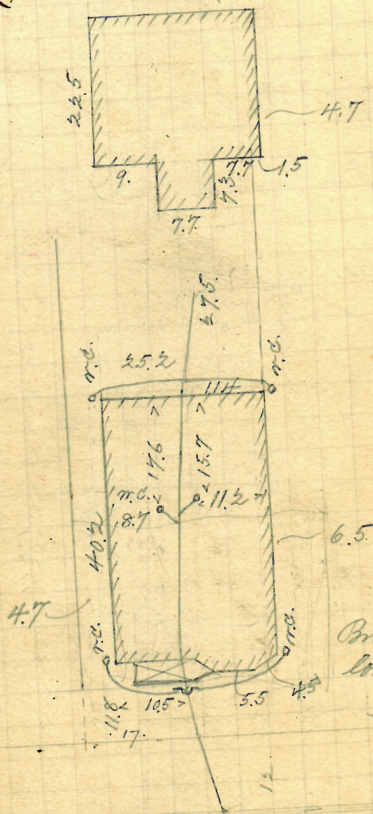
Robinson St.

Bernard Brady, N.L.

Permit = 5979.

Opened, Dec. 3, 1890.

Closed, " 4, "

Reopened Apr. 5, 93 cut at curb, 10.
Closed Apr. 15, 93 5" pipes.
Logg, S.L.Reopened Oct. 8-1907
Closed " 9-1907
J. Deary, S.S. - Belmont

Plotted

Brick work 10" from
lot-line -
curb

93.?
Enter 93.6 N.W. 1/4
m. N.W. 1/4 of Gray St.
R. Dec. 20/90.

Nov. 25.
Dr.

7. Parade st.

Permit = 5980.

Opened, Nov. 27, 1890.
Closed.

opened May 20 / 93

Closed May 22, 1933

93 Cut at curb, 10.5

G. F. Lewis D. L.

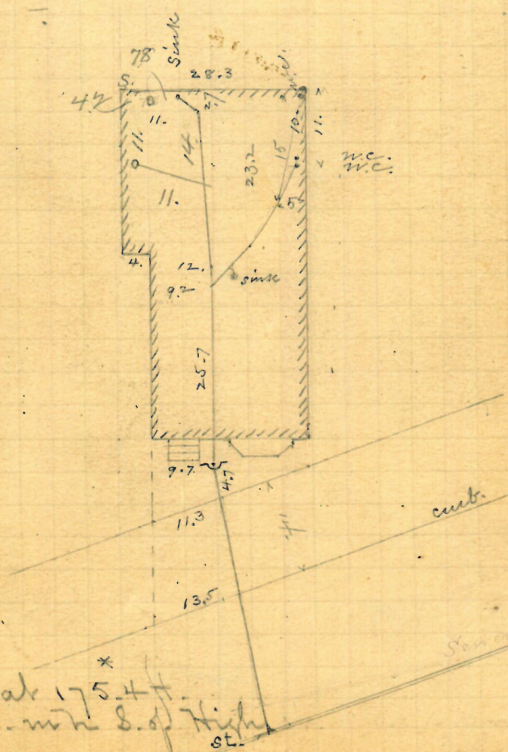
6" pipes -

Approved Sept. 30-1925

Closed 11 30-1925

Ferrazzi di S. -

Plotted.

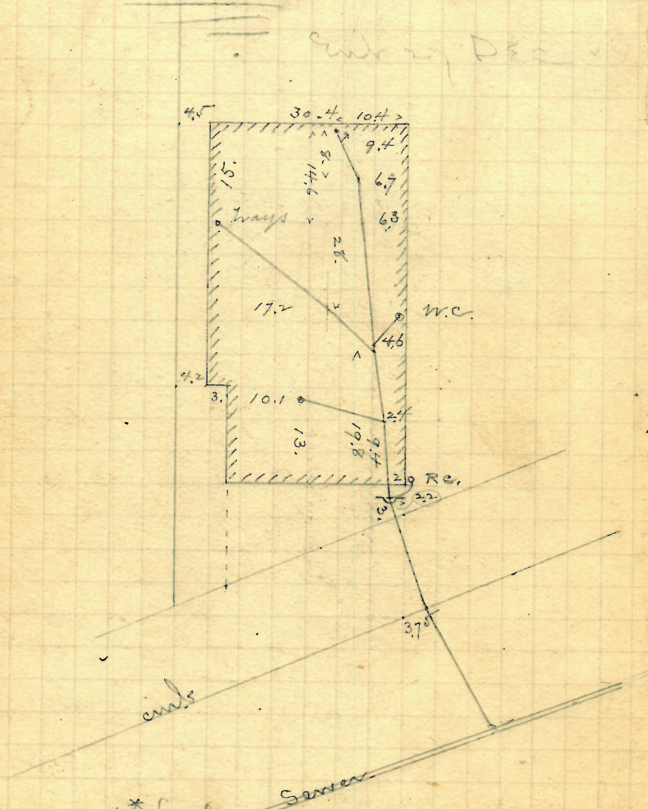


Enters at 175.44
E. of 1st. - with E. of High
St.

etually 176.4

R. Dec. 27/90

Cut ab cut, 10.25
6" pipes.



R. 100 *

100

Ver. 25

Wm. Wallace Brown,
154 Transit St.

Jason A. Blackman, D.T.

Permit # 5983.

Opened, Dec. 17, 1890.

Closed, " 22 " ±

Reopened, Apr. 22, 1918

Closed " 22, 1918

J. Holmes & Co.

Cut at curb, 8.3

5" pipe

Reopened 5/9/58

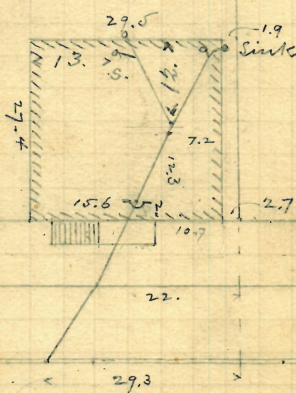
Closed 5/9/58

D.L.T.A. Gammino

Remove Trap, Clear.

Plotted

Cut 19



Enters sewer 71. f. E. of
4th m. W. E. of Parole St.

R. Dec. 27/90

PARKVIEW NURSING HOME

OAK STREET

101

Nov. 22

Sebastian Hark
17-21 Parade St. W. 22? Oak St.
J. Frank Read, D.L.
Permit # 5984

Opened, Nov. 26, 1890. Reopened Nov. 1923
Closed, Dec. 11, 1890. Closed, 11/6/1923

M. W. Hally & S. Brown

Cut at curb, 10.5 ft.

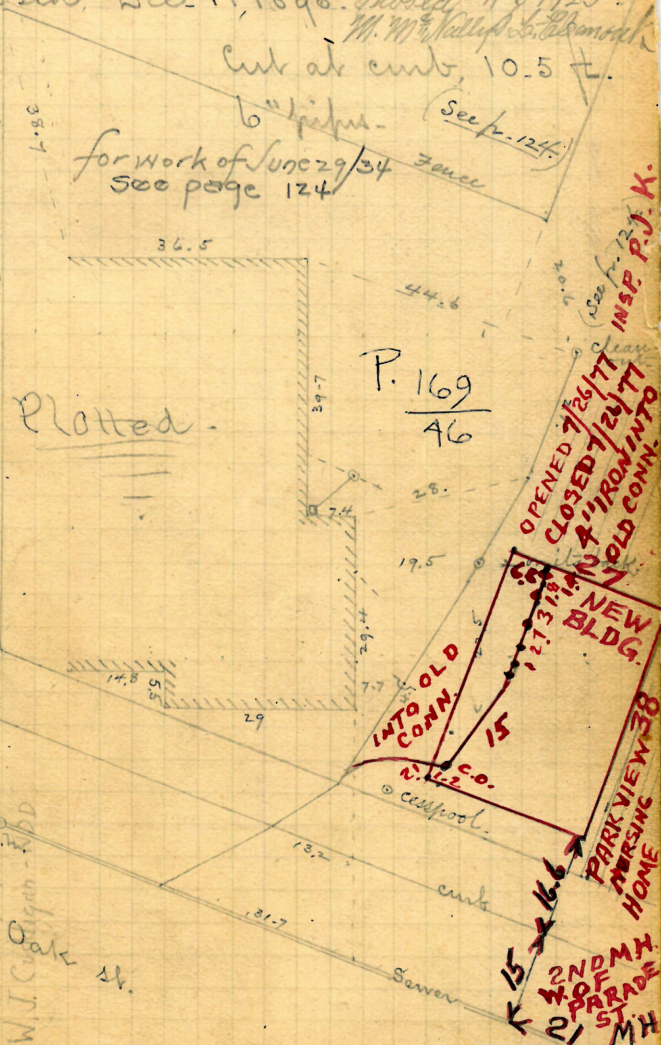
6" pipe

for work of June 29/34
See page 124

See p. 124

Parade St. Closed April 10-1905
Reopened Nov. 27, 1907
Closed 11/15-1905
Closed 11/28-1907
McMally & L. Brown to Clearcut

W.I. C. O. 2/13/53
W.I. C. O. 2/1/53
W.I. C. O. 2/1/53



Plotted

P. 169
46

OPENED 7/26/11
CLOSED 7/21/11
4" IRON INTO
OLD CONN.

INTO OLD CONN.

NEW BLDG.

PARKVIEW 38
NURSING HOME

2ND MH.
4" OF
PARADE
ST.
MH

Enters sewer 25.8 W. of curb
on N.W. of Parade St.

Dec. 26/00

Nov. 25

No. Martin Brown
 125 Angell St. SW cor Cooke St.
 J. Frank Read, D.L. Permit # 5985.

Opened, Nov. 28, 1890.

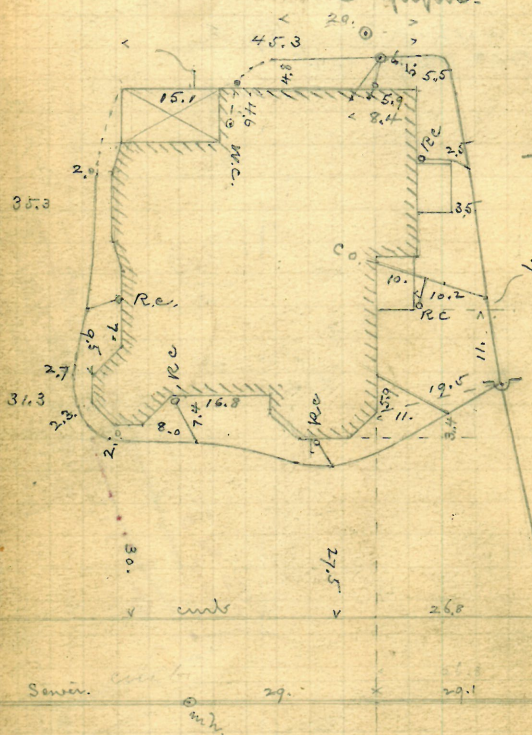
closed, Dec. 6, "

Reopened - May 22, 1940

21 closed - May 22, 1940 Cut at curb, 10.2

Abcissoidi - clear

6" pipes.



Plotted

Enters sewer 115.3 ft. E. of
 2d m.h. E. of Hope St.

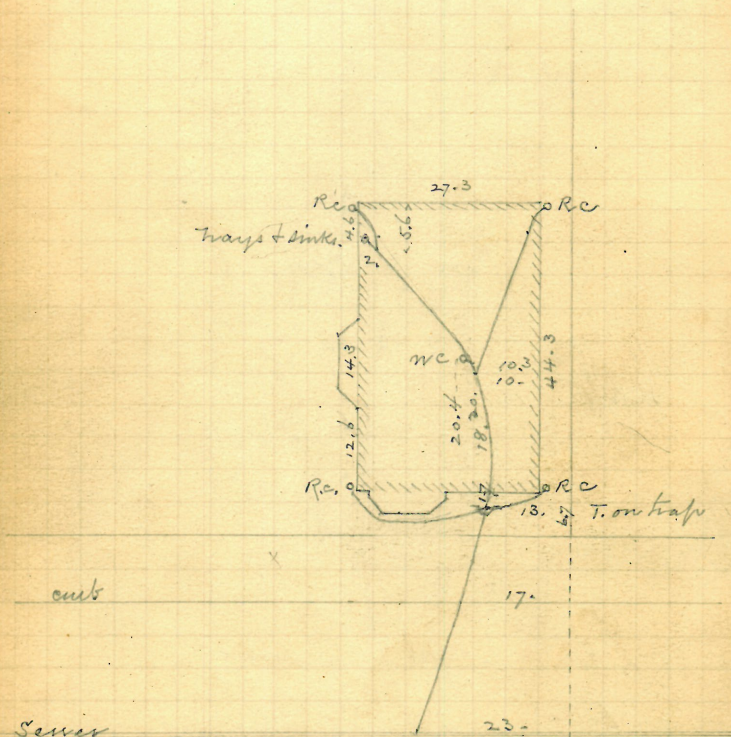
R. Dec. 29/00

Nov. 25

Charles Rogers, 222 Tokemotton st.

David E. Barry, DL.

Permit #5987.

Opened, Nov. 27, 1890.
Closed, " 29 "Curb at curb, 10.6 +
5" pipes.Enters at 68.3 A.E. of
2nd n.w. E. of Providence st.

R. Dec. 2/90.

Nov. 26

Elenora F. Eddy
wife of

Forrest E.

21 Willow St.

J. Frank Read, D.L.

Permit # 5989.

Opened, Dec. 1, 1890.

Closed, " 2, "

Reopened July 7, 96

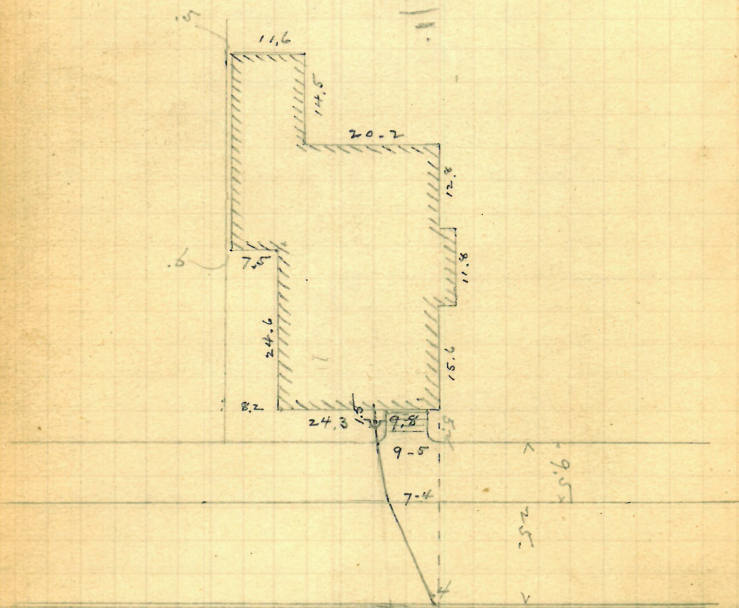
Closed " 8, 96

H. M. Goldrick D.L.

Cleanout

cut at curb, 9.8 ft.
5" pipes

Plotted



Enters 88 ft. W. of 2nd m.h.
W. of Parade St.

R. Dec. 12/90.

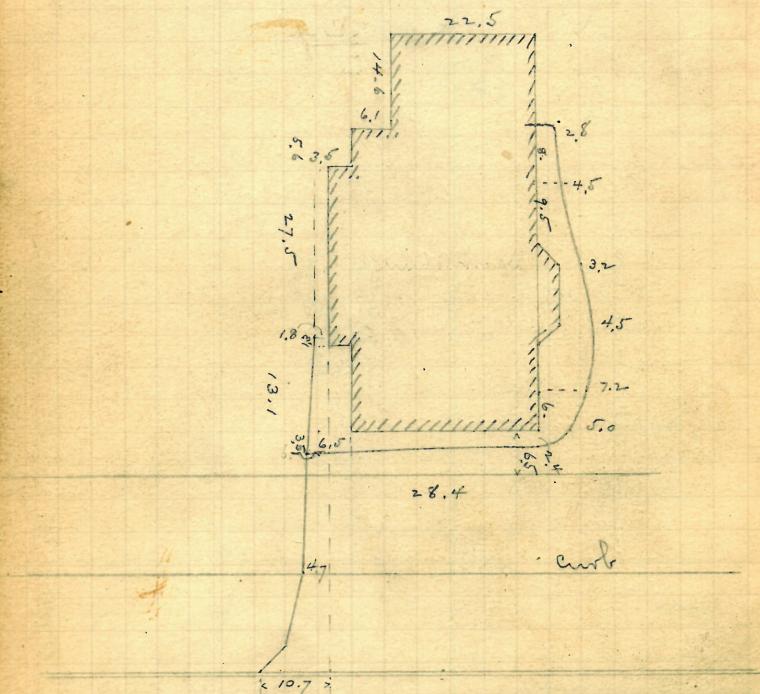
Nov. 28.

P. A. + M. E. Mason
89-91 Bowen St.
Thomas B. Rds., D.L. Permit # 5991.

Opened, Dec. 1, 1899.
Closed, " 13 "

cut at curb, 8.25-
60 ft. -

Plotted.



R. Jan. 19/91.

Enter 79.7 ft. W. of 8th int.
W. of Thayer st.
Blue book locates - at 82.7-
None there.

Dec. 1

J. A. Blackman, D.L.

Permit # 599

Opened, Dec. 12, 1890 -

Closed " 17

Resumed June 8-1915

Closed " 10-1915

R. M. Hay Esq. L.

Received Sept 18, 1931

closed 1 1/2 P.M.

P. 27. Salt, 24.

Chandlet

OPENED APRIL 12 1972

CLOSED APRIL 12, 1972

D. L. FELIX Ricci

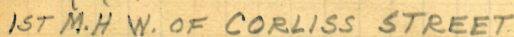
ADDED RAIN

CONDUCTORS

INTO OLD CONN.

NEW BUILDING

6" VC



Enters sewer 31.2 l. of
4th m.h., counting that
at Ashborton st. as one.

R. Dec. 27/90.

Dec. 4

Thomas Leathers
51-53 Queen St SE, cor W. Exchange
John Keogh, Jr. Permit #5995.

Opened and closed

in Dec., 1890.

Reopened Oct. 5-1893 - Work done without
Closed Oct. 6-1893 notice to me.

H. W. Goldrick D. L.

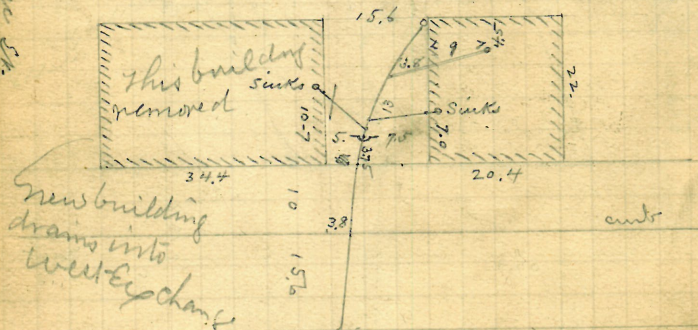
Reopened May 16-1911

Closed " 18-1911 cut at curb, Mr. Keogh
J. Eatri D. L. Blanchard - says 9.8 ft.
6" pipes, Mr. K. says.

Plotted.

W. Exchange St.

Points given me by Mr. K. - cut.



4.2
3.4

Enters 29.3 ft. S. of
1st. m. W. of W. Exchange
SE.

R. Jan. 3/91

Dec. 4.

Estate Stephen Bates,
30 Bondhams St.
J. Frank Read, R.L. 3rd cor Junction St.
Permit # 5996.

Opened, Dec. 8, 1890.

Closed, " 10, "

Reopened Sept. 25/93

Closed Sept. 27/93

Geo. L. Lewis D. L.

Reopened & closed Oct. 24/99

J. F. Read D. L.

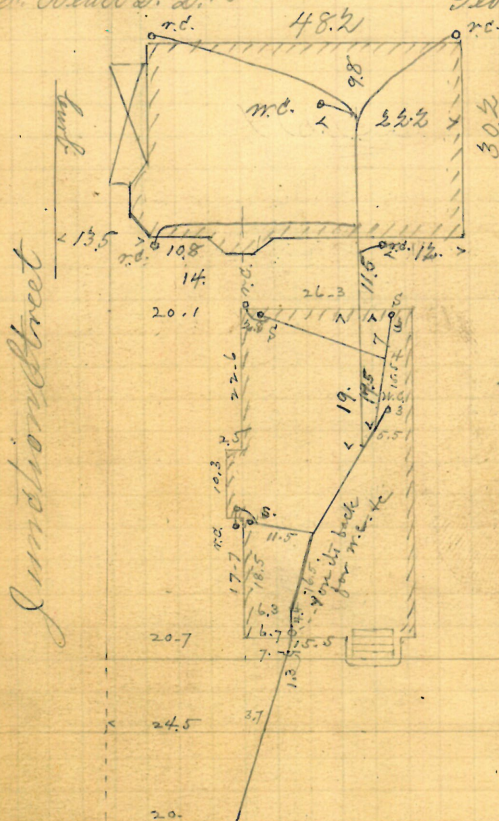
Cut at curb, 10.2

6" pipes.

Reopened Dec. 14-1910

Closed " 14-1910

Geo. L. Lewis D. L.



Plotted

$\frac{163}{10}$

Enters 5 ft. W. of 1st. m.h.
W. of Junction St.

R. Dec. 29/90.

Dec. 2

Fred. A. Weeks

9521 Richmond St.

J. A. Blackman, A.L.

Permit # 5997.

Opened, Dec. 8, 1890
Closed

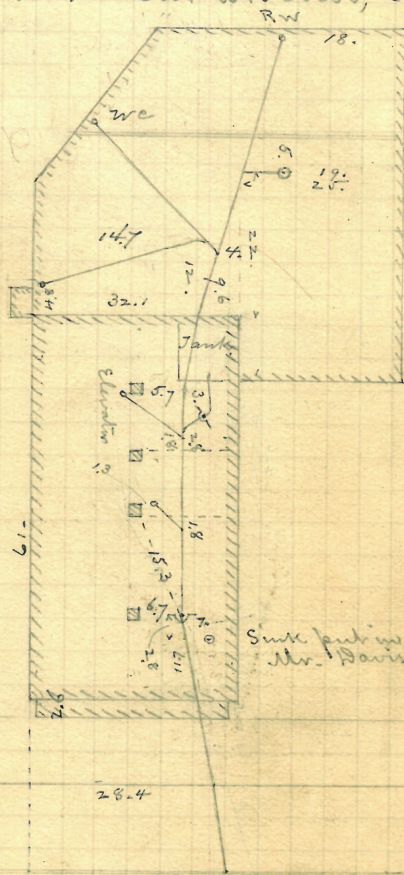
Closed

Reopened Oct 17 48 - 1902

Proposed Oct-1748-1902
J. Henry P. L. - Cleanout Cul. ab. culs, 8-7 ft.
RW

6" piters

Plotted
in part.



Sink put in by a
Mr. Davis without
permit.

Enters sewer 69.6 ft.
S. of 2nd m. n. S. of
Clifford st.

R. Dec. 31/90

Dec. 8.

John W. Potter

Hwy. St.,
#226

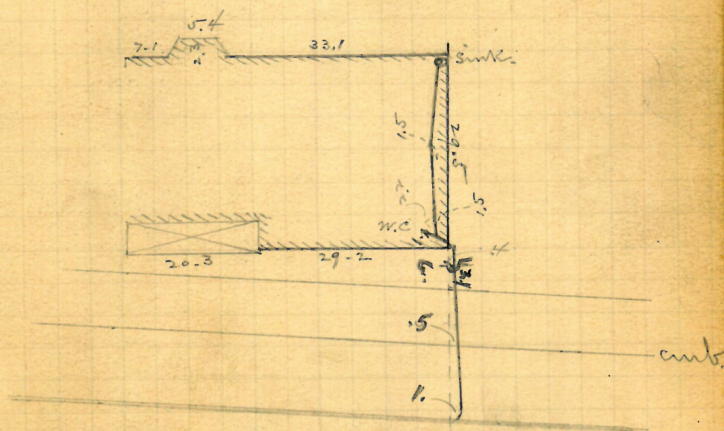
S.E. corner Broadway-

J. Frank Read, S.E.

Permit #5998.

Opened, Dec. 9, 1890.

Closed " " "

Cut at curb, 10.1
6" pipe.Plotted.Enters 69 ft. S. of 1st. m.h.
S. of Broadway.

R. Dec. 26/90.

Dec 18/90

Estate of Alexander Duncan

12 Hay st., at
S.E. cor. Newbold st.

Y. Frank Read, D.L. Permit # 5999.

Opened, Dec. 19/90.

Closed, " 20/90

Reopened & closed Oct. 13/98 Cut at curb, 6.5

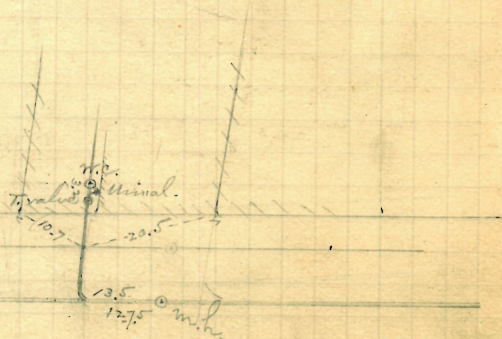
C. Cheney D. S. - Elavout -

1/2 Reopened - Dec. 4, 94 4" pipes (iron)

25 Closed - Dec. 4, 1949

Geo. Mulvaney - Repair

Plotted.

Enters sewer 12.75 W. of
2d m.h. W. of Pine st.

R. Dec. 20/90

Dec 18/90

Francis A. Bowen.
37-39 John St.
John W. Furlong, D.L. Permit # 6000.

Opened Dec. 19, 1890.

Closed " 20 "

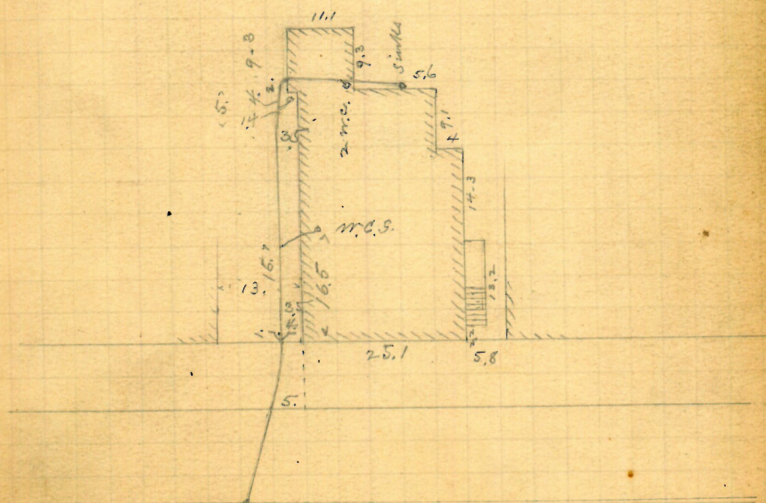
Reopened Oct. 24/91

Closed " 27/91

H. B. O'Rock, D.L.

Cut at curb, 10.
6" pipes.

Plotted



R. Dec. 26/90.

Enters sewer 46.9 ft.
W. of R. m. n. W. of Brook
81

Dec-19

Joseph Bannigan, Preston St.
32-34 1/2 W. of 1st St.

David E. Barry, D.L.

100 ft. W. of 1st St.
N. side

Permit # 6001

Opened Dec. 20, 1890

Reo. 2/2/65 Closed 2/2/65

Closed " 22, "

D.L.R. Troffa (Remove Trap reph
with C.O.)

Reopened Dec 14 96

Closed " 14 96

Cleanout & Put in

Port Phillips D.L.

Reopened May 5, 1928

Closed " 1928

M. H. Lyons D.L.

Cleanout -

bank, below top of lowest bank

5" pipes.

step, 15.2

(No curb set)

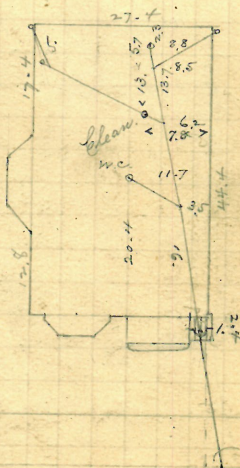
Reopened Sept 8, 1934

Closed - Sept 8, 1934

P.W. Taft - Clear

Plotted.

170-98

Enters 90 ft. W. of 1st m.h.
W. of 1st St.

R. Dec. 30/90

Dec. 19.

Joseph Bannian Preston St.
26-28 Spring Orchard Ave. (N. side)
150 ft. W. of Lins St.

David E. Barry, D.L. Permit # 6002.

Opened, Dec. 21, 1890.

Closed, " 23,

Reopened 10/9/58

Closed 10/9/58

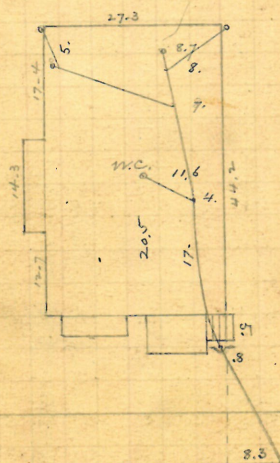
D.L. T.A. Gammino

Remove Trap.

Cut below top of lowest
front steps, 15.5.
(No curb set.)

5" pipes.

Plotted 170-48



Curb

Sever

Enters 129.7 ft. W. of
1st m. N. W. of Lins St.

R. Dec. 30/90.

120

Dec. 19.

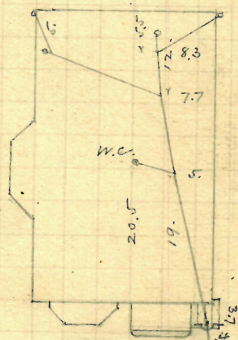
Joseph Bonigan Boston St.
22-24 ~~Young Orchard Ave~~ N. side
200 ft. W. of Lins St.

David E. Barry A.L. - Permit # 6003

Opened Dec. 1890.
Closed Jan. 1891

Cut at curb -
9.75 ft. below
level of 2^d min.
cover.

Plotted. 170-98



Enters 2^d min. W. of Lins St.

W. Jan. 16/91.

Dec 19.

Joseph Bonigan ^{Preston St}
 16-18 ~~Young Orchard Ave~~ (No. side)
 250 ft. W. of Ives st.

David E. Barry, D.L. Permit # 6004.

Opened Dec. 1890.

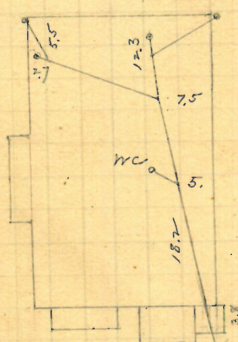
Closed Jan. 10, 1891.

Reopened & closed April 27-28-1900

J.H. Read D.L. - Cleanout -

Cut at culs-
 16.5 ft. below lev-
 el of top of first
 step to piazza or
 portico.

Plotted. 170 - 98



2.7
 6.7 V

culs.

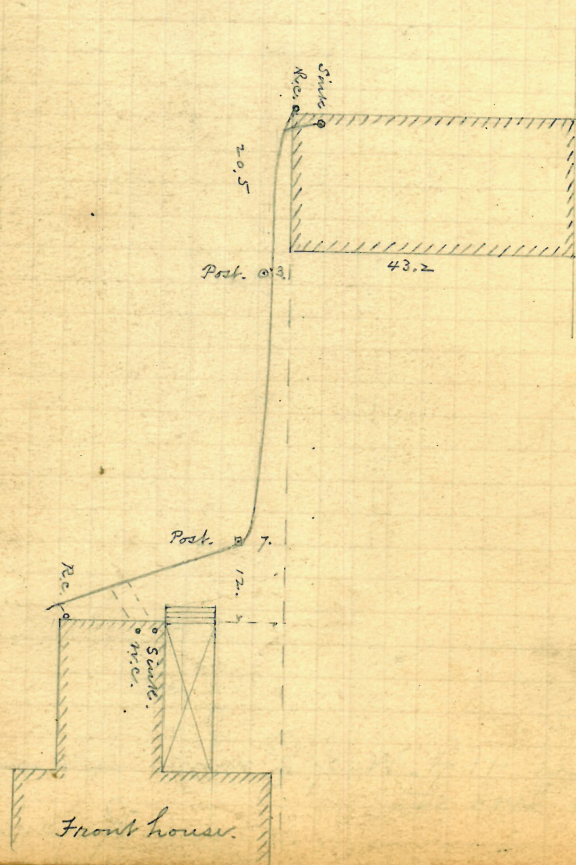
Enters 41 ft. W. of 2^d m.h.
 W. of Ives st.

Survey

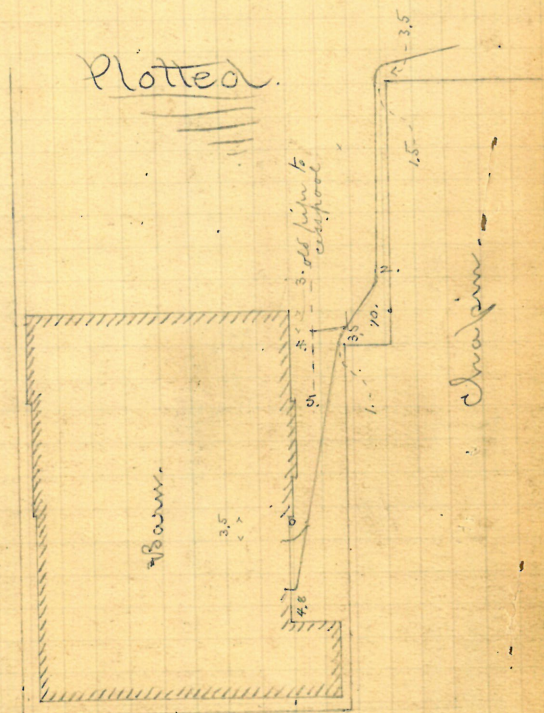
R. Jan. 16/91.

Harriet A. Tyler, (concluded.)
 643 High st.
 (See p. 71.)

Plotted.



Helen M. Farwell, (concluded.)
See p. 111.

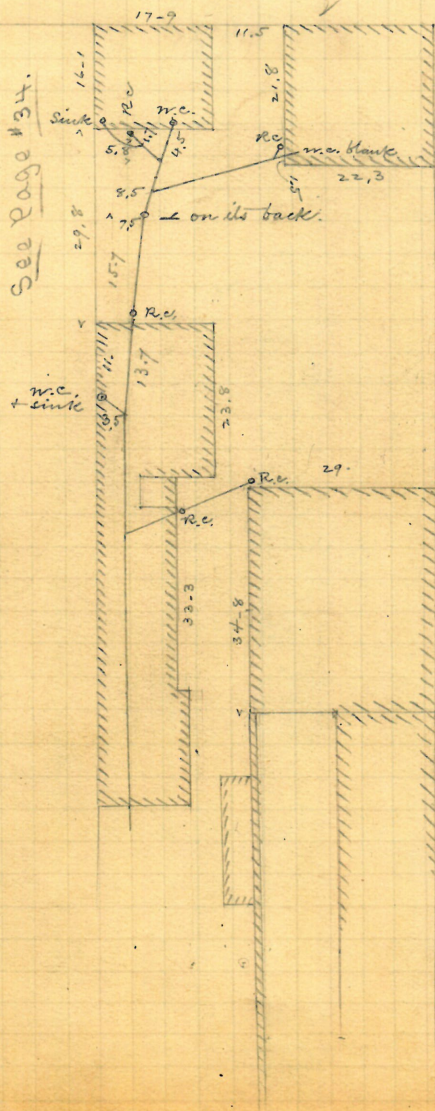


Geo. H. Griffin, (concluded.)

See p. 34.

Part Plotted

See Page 134.



City of Providence

Fire Station, Richmond St.

Olney St. N.E. cor.
East av.

John Keogh, D.L.

Permit # 6006.

Opened, Jan. 26, 1891.

Closed Feb. 28 ± "

Opened July 1900

Closed 1905

P. E. Marney D.L.

line of
cut at curb, 9.6

6" pipes

cut
cut
cut

Plotted

Reopened July 31-1913
Closed Aug. 1-1913
M. W. Lyons D.L.

Reopened May 11, 1931

Closed "16"

to Bernardelli St.

Reopened 12/8/38

Closed 12/8/38

M. W. Lyons - clear C.B. 5

R. May 21/91

38.2
mtr. 39.enters 38.2 ft. E. of 1st. m. by E. of
Thayer St.

Dec. 31/91.

Grace L. K. brook

56. Stinson Ave,

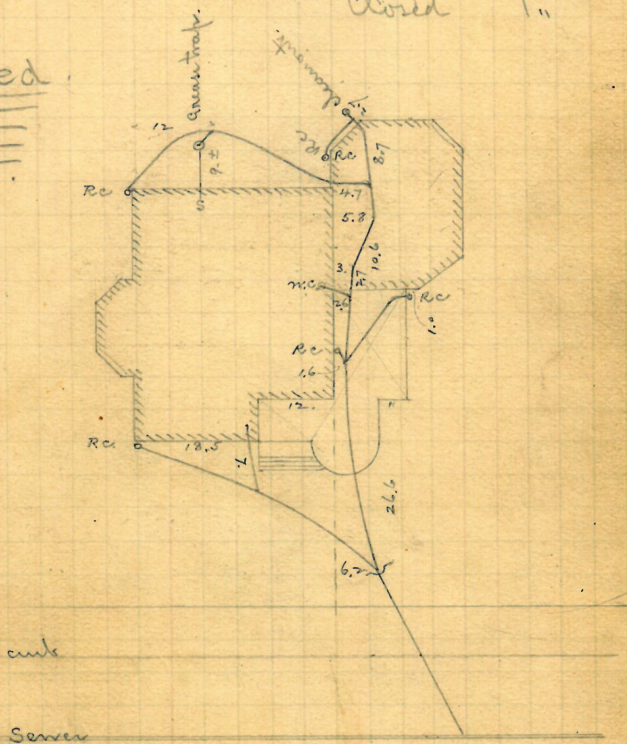
N.E. cor. Stinson place.

Corrected diagram of drainage
of this estate, including alteration and
extension under permit issued Dec.
31, 1890.

For original diagram, which
is wrong, see N.B. 594, p. 151.

Reopened Jan. 1891.
Closed " "

Plotted



Jan. 28
/9

Estate of G. T. Swartz,
Dorrance, near Pine
N.E. corner.

Extension of Permit # 263.
See N.B. 113, p. 34.

J. F. Read, D.L.

Reopened Feb. 5, 1891.

Closed " 6, "

Reopened May 25, 95, m. c. padded

Closed " 25" 955 D. Holmes D. L.

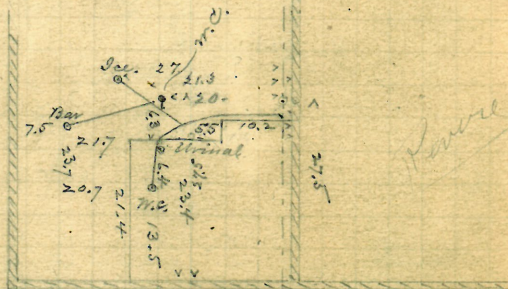
Reopened Apr. 16. 1919

Closed 11 16-1919

T. Roscoe J. L.

Plotted

{ For Ex. Work Apr. 16-1919 }
 { See Box 113 pg 34- }
 { Lins. added }



Removed

131

Feb-9/91.

Minerva V. Williams,

Link St.

From So. Main St. Sewer.

Gas. P. Hillard, D.L.

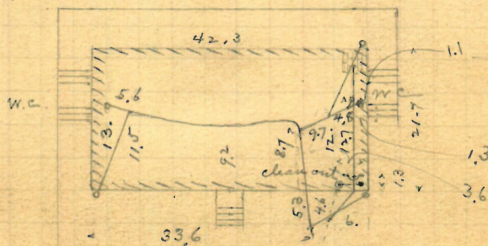
Extension of Permit # 3004

See N.B. 427, p. 125.

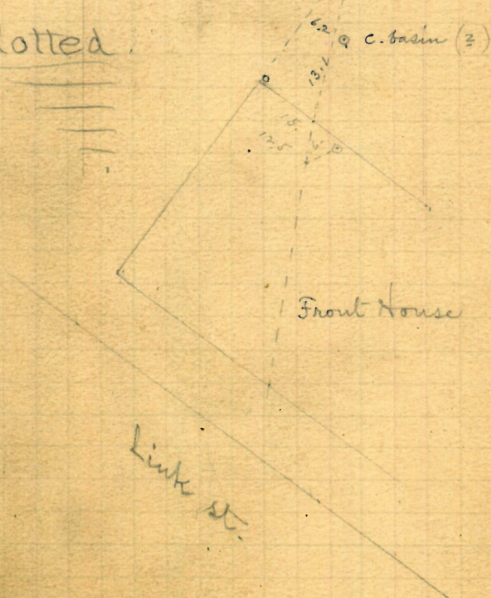
Also, Pas-book # 24, p. 32; also,

Reopened, Feb. 9/91. Reopened Oct 8-9-1902

Cloud, " 10 " N. Holgrove St. Cleanout



Plotted



Front House

Link St.

Part of grade defective - see Pas-book 24, p. 32

132

Feb-11
1911

Korogansett Electrical Lighting Co.
Elm St.
Wm. H. Fenner Co. L. Permit # 6007.

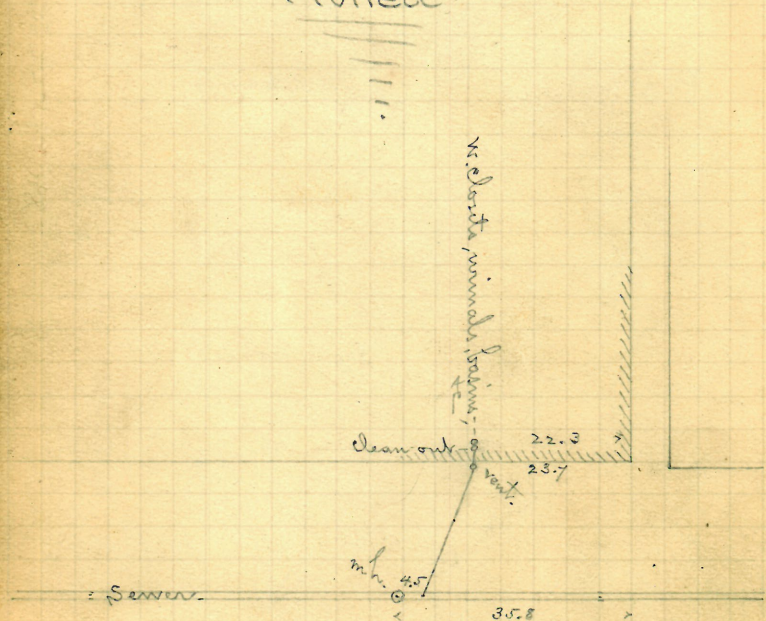
Opened Feb. 12, 1891.

Closed, " 19, " (st.)

6" pipes from main.

Cut in front of building, (at vent pipe) 5 ft. below top of granite water table.

Plotted

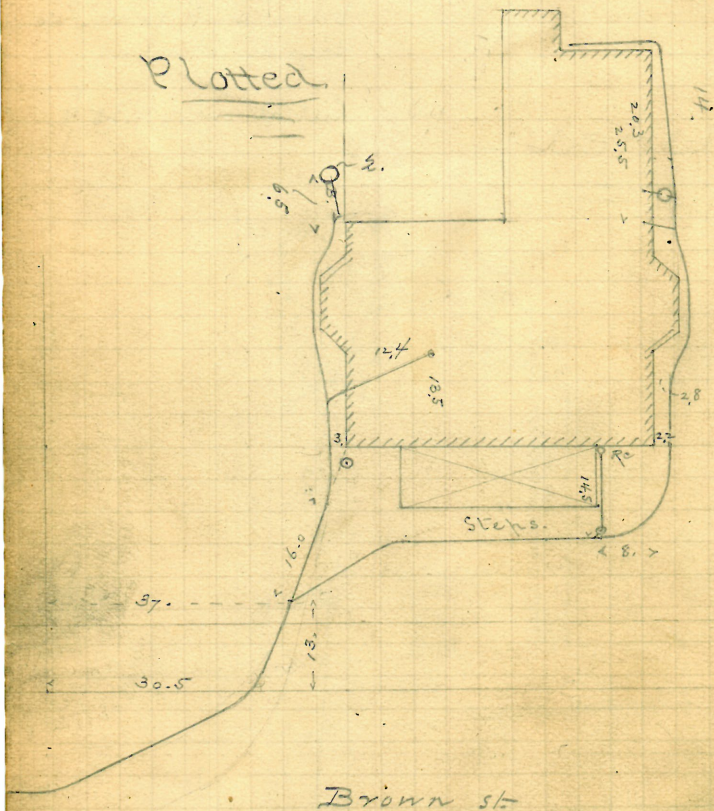


Enters 4.5 ft. W. of 2 m.h.
W. of harbor line.

R. M. 20/91.

Mary B. Hill, (Concluded
from p. 86.)
Brown St.
(Permit # 5969.)

Plotted.



Feb. 19/91.

Freemason's Hall bgo.
 Eddy St. E. in ~~Permit~~ ~~to~~ ~~the~~ ~~city~~ ~~of~~ ~~San~~ ~~Francisco~~
 Frank Read Jr. Permit # 6009.

Opened Feb. 23, 1891.

closed " 24 "

Reopened Nov. 15, 97

closed " 17, 97

Thos Phillips D. C.

Work done under Extension Permit

No 342 Book 113 Pg 117

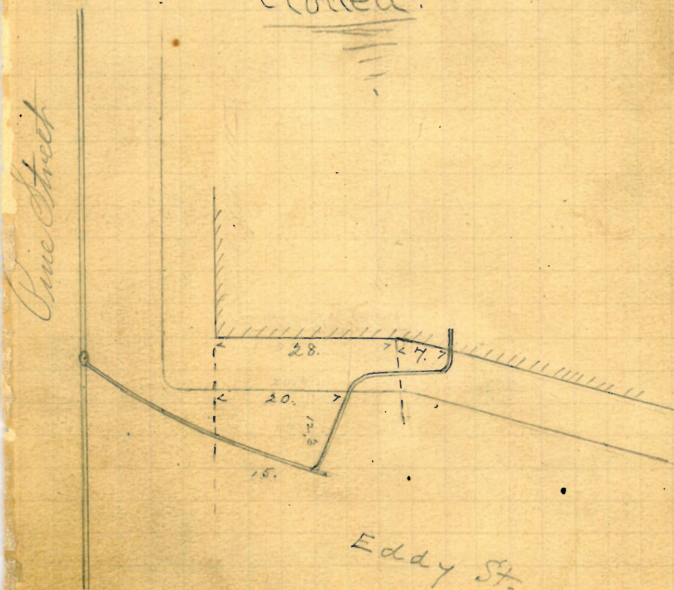
For Elevator waste only.

No traps set.

6" pipes (iron through
 the sidewalk.)
 cut at curb 5 ft.

Discharges into private drain in Eddy st.

Plotted.

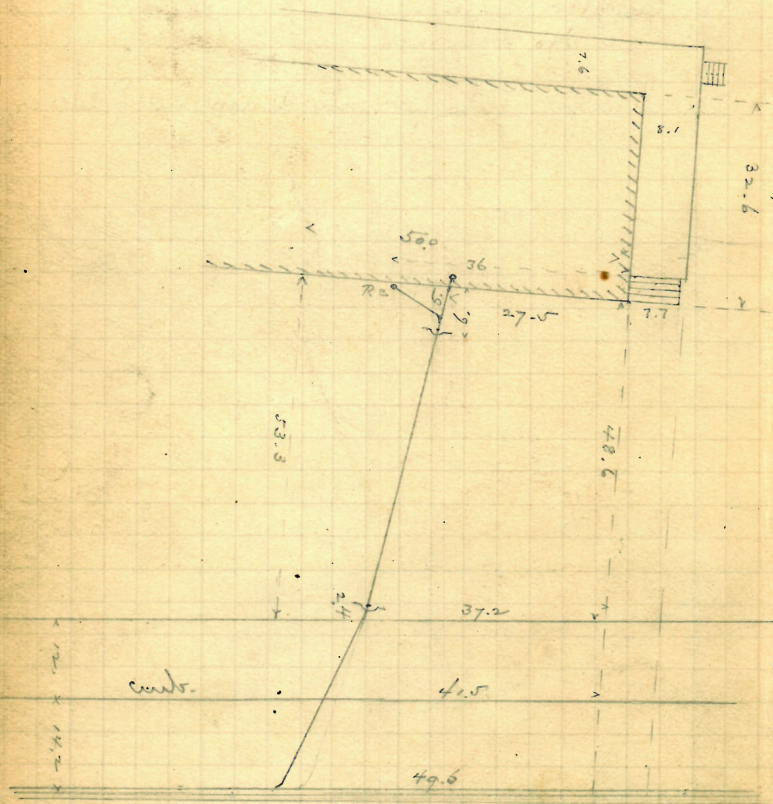


R. Mch 21/91

136

Feb. 27
91.

Old Colony R.R. Co.
263? India St.
T. Phillips Co., D.L. Permit # 6010.
Opened March 10, 1891.
Closed " 12 " in street.
" " 6" pipes.
Cut at curb,



R. June 8/91.

Enters sewer 5 ft. W. from
m. W. of the river.

137

Mch 11/91.

Ada F. Mott

J. Frank Read, Sr.

12 Sycamore St.

Permit # 6011

Opened March 11/91.

Closed " 12/91 (in str.)

" " 14 " ("cellar")

Reopened - Mar. 24 1944

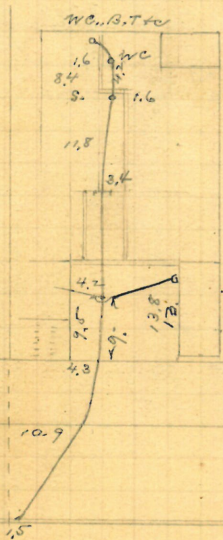
Closed - Mar. 26 1944

C. Pono. - Add 4" 8" 2 son

5" pipes.

Cut at curb, 9-5

Plotted.



Enters sewer 107.7 ft. S.
 of 1st. m. h. S. of High st.

R. Mch 21/91.

138

#145

Mich 11/91

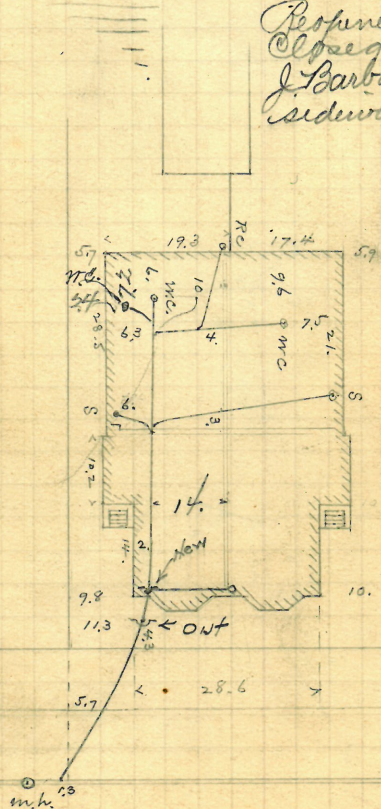
Margaret Campbell,
8-8 1/2 Sutton St.

J. Frank Read, L.L. - Permit # 6012

Opened Mich 12, 1891 -
Closed " 14, " (in St.)

Proposed Mich 31-1910 - 5" pipes.
Closed " 31-1910 - cut at curb, a. 2
G. Riccetti D. L. - Proposed June 17-1910
Closed " 17-1910
A. Riccetti D. L. - Proposed Oct 24, 1934
Closed - Oct 27, 1934
J. Barbarella. clear of sidewalk change top

Plotted



Sever

Enters sewer 5 ft. N. of 3' m.h. N. of Broadway.

R. May 23/91.

139

March 12/91

328 Friendship st.

R. Brady, W.L.

Permit # 6013.

Opened Mch 25, 1891.

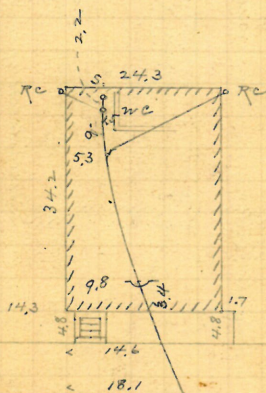
Chord

" 27, "

5-inch pipes.

Cut at cut, 10.

Plotted



Server

Enters sewer 129.7 ft. E. of 1st. m.h.
E. of Summer St.
R. Har.

✓ R. May 23/91

140

GONE

March 14, 1911

Richard O. Burgess

758-760 High St.

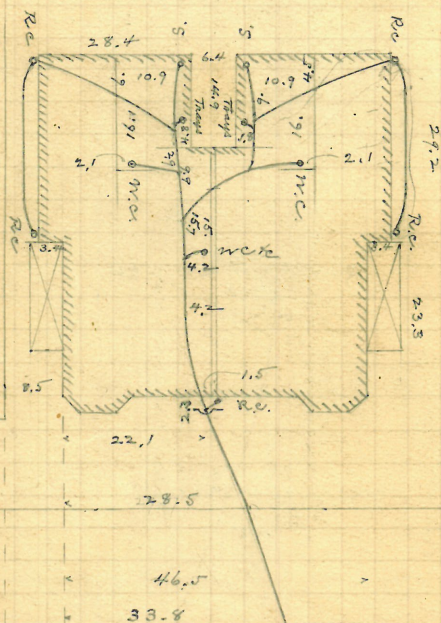
J. A. Blackburn, Sr.

Permit # 6014.

Opened March 16, 1891, (sidewalk.)

Closed " 20 " (house.)

" " 25 " (street.)

6-inch pipes
cut at curb, 9.2Plotted.

R. May 23/91.

Enters sewer 68.8 ft. E. of 3rd mch. W.
of Albany st.

141

Mch 16
91-

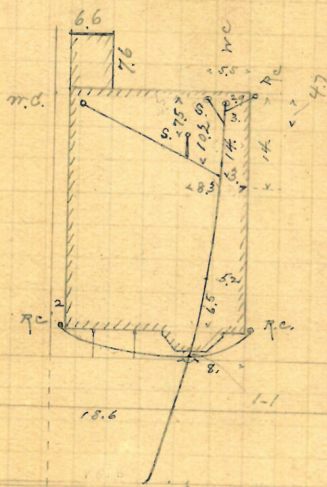
Heins Est. Lawrence Lynch.
65 ~~42~~ Sheldon St.
D. E. Barry W.E.

Permit No. 6015.

Opened Mch 18, 1891. Reopened June 19/91 to
closed " 24 " clear of obstructions.

Reopened & closed Nov. 9, 99 5" pipes.
A. Chello D. G. ~

Cut at curb, 9.6-

Plotted.

R. May 23/91.

Enter sewer 73.2 ft. W. of 1st. m.h.
W. of Brook St.

GONE

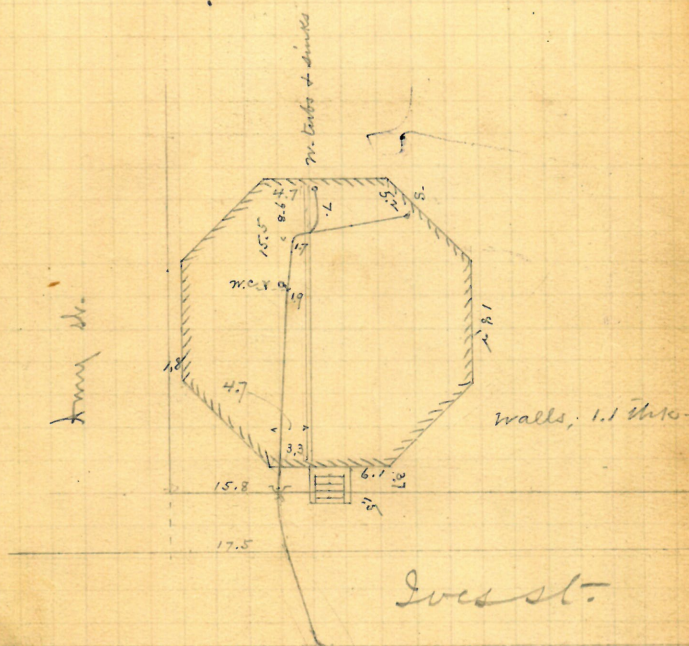
145
Mch 18/91.

Dennis Murphy
167 Ives St.
David R. Barry, D. - Permit # 6018.

Opened Mch 19, 1891.
Closed " 20, " (short)
" " 23 " house

5" pipe.
Cut 7.8 below lower
step of front entrance
(at 9 ft. cut from build-
ing lines.)

Plotted



Enters sewer 98 ft. N. of
W. m. N. of King St.
Preston

R. May 21/91.

Meh!

J. A. Blackman, D.L. #146

Permit No 6019.

Opened March 26, 1891.

Closed " 27 " (in st.)
D" " 28 " (" house)

Refused Jan 29-1919

Closed 1919

W. J. Henry D. L. - Clearwater

Reopened - Mar 28, 1934

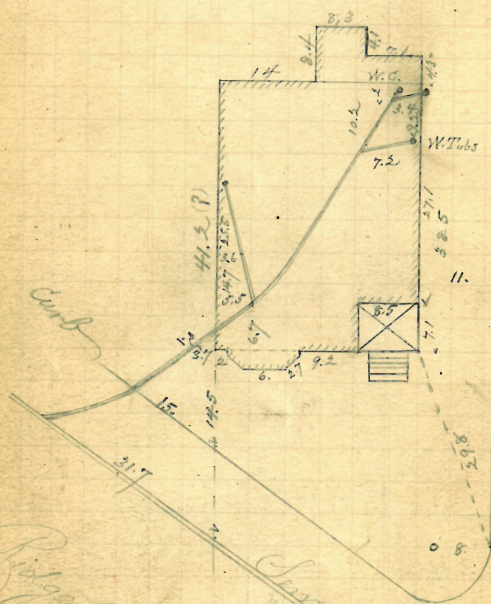
Closed - Mar 28. 1934

C. Paolucci - clear open sidewalk

6" pipes.

Cont ab cont, 11.4

Plotted



Page Sheet

Enters series $34.5 \pm f.l.$
of 1st. m. br. N. of Penn. cr.

* Plan at City Hall says 36 ft

R. May 21/91

147
March 19/91

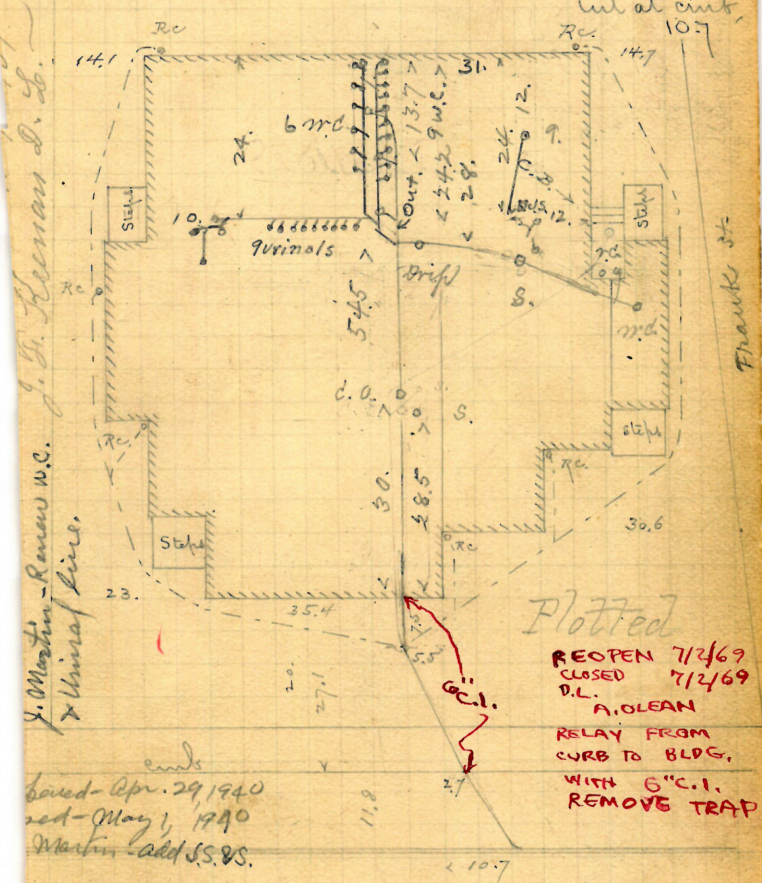
City of Providence,

School-house,
106? Beacon Avenue.

J. Frank Read, D.L. Permit # 6020.

Opened March 20, 1891.

Closed " 24, " (Street.) 6" pipe.
Cut at curb, 10.7



J. Martin - Renss W.C.
X Union Ave.

Frank St.

Plotted
REOPEN 7/24/69
CLOSED 7/24/69
D.L.
A.O. LEAN
RELAY FROM
CURB TO BLDG.
WITH 6" C.I.
REMOVE TRAP

ends
boxed - Apr. 29, 1940
red - May 1, 1940
Martin - add S.S. 85.

Enters sewer 57.5 ft.
N. of 1st m.d. N. of the
middle of Frank St.

May 23/91

148

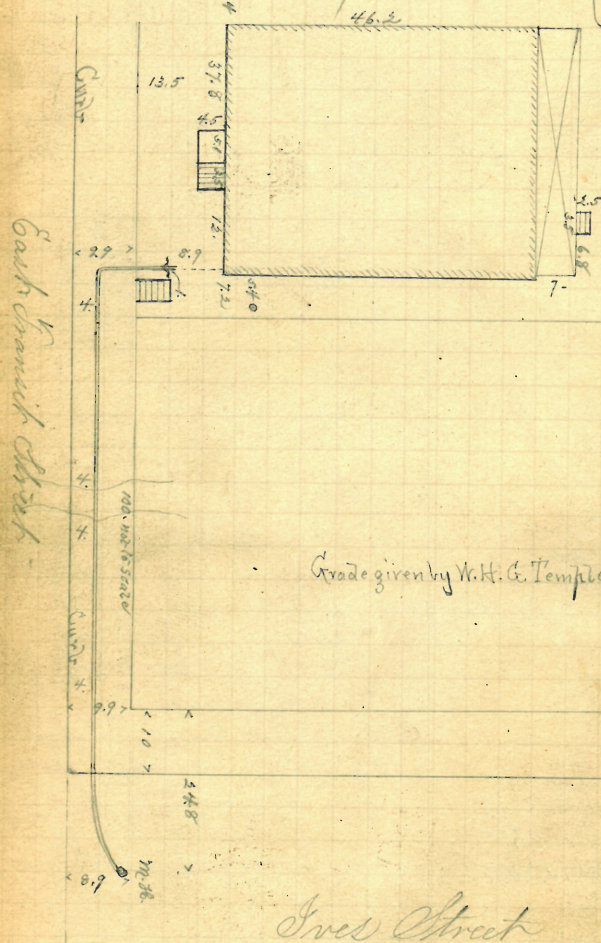
March 23

Home for Aged Colored Women,
 1729 Transit St.,
 Sweet St. sewer.

J. Frank Read & L. Permit # 6021.

Opened March 26/91.
 Closed 30/11 in st.

6" pipes.



Reopened June 25 1945 12" Reopened Dec. 23, 1935
 Closed June 25 1945 12" Reopened Dec. 23, 1935

Sweet Street

W. May 21/91.

Enter Sweet St. sewer on S. bldg line of Tr

149

March 23
Dr. 91

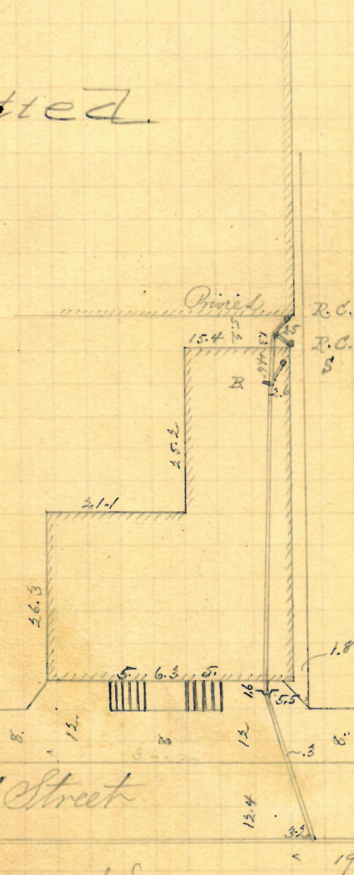
#119 Pond St.

Permit # 6022

Opened March 24, 1891-
Closed " 31 "

6-inch pipes.
Cut at cuts, 10-9-

Plotted.



Pond Street

Enters sewer 16 ft.
W. of 2nd n. h.
W. of Linnun st.

R. May 21/91

150
Nicholas Sheldon
J. R. 282 Taber ave.
March 24
1891

Nicholas Sheldon
John W. Briggs, 28² Taber ave,
St. Permit # 6023

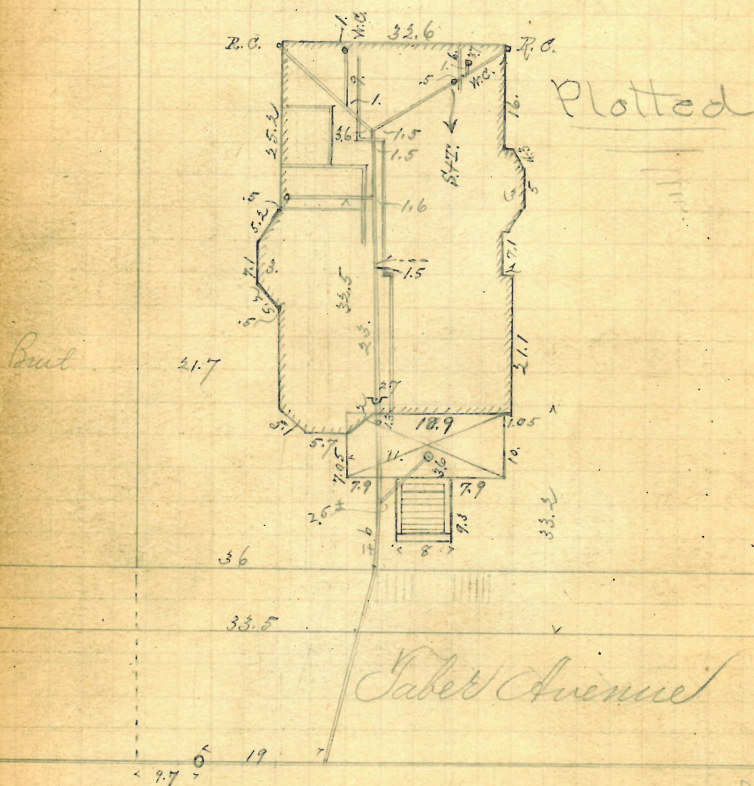
Opened March 25, 1891.

Closed " 28, " (in str)

Reopened May 20/91 to extend.

Closed " 30 ± " 5" higher

T. Phillips Ho., Jr.



Enters sewer 19 ft. N. of
4th m. N. of Angell St.

R. June 3/91.

1178 - 1184 WESTMINSTER ST. 151

Feb. 25/91

~~Mary # Rice~~ 167 Bridgham St.
S.E. cor. of High.

J. Frank Read, H.L. Permit # 6024.

Opened March 26, 1891

Closed " " (in St.)
" 27 " ("house")

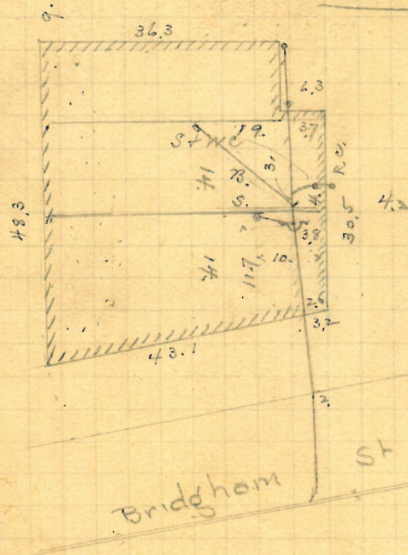
Reopened Aug. 30-1907

Closed " 31-1907 5" pipes.

L. Trudon D. L. ~ bank at curb, 10.2

Westminster St.

Plotted.



R. May 21/91

Enters sewer 45 ft.
S. of 1st. m. n. S. of
High St.

152

March 23

St. John's Church

48 Sutton St.

Bernard Brady, St.

Permit #6025.

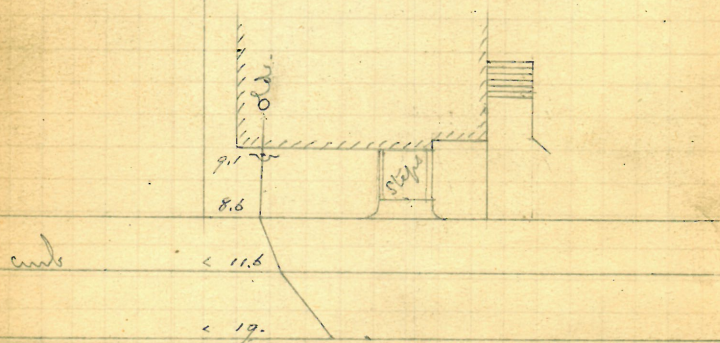
Opened March 26, 1891.

Closed " 27, "

5" pipes.

Cut at curb, 10 ft.

Plotted.



Enter sewer 28.8 ft.
S. of 2^d m. h. S. of
Ostrander ave.

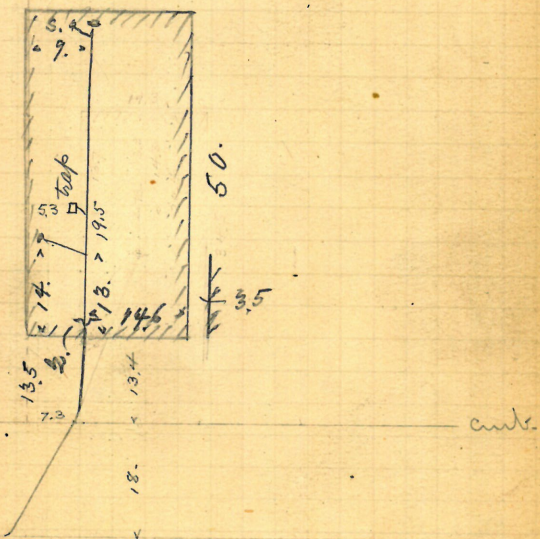
R. May 21/91

153
March 25, 1911

Mary McElroy,
377-379 Atwell Ave.
Bernard Brady, D.D. Permit # 6026.

Opened March 27 1891.
Closed 31 "
Reopened Nov. 27 1911 5" pipes.
Closed Dec. 2 1911 Cut at curb, 10.5
V. Ramigletti D.D.
Reopened & Closed Sept. 18 1912 J. Catu D.D.

24.5 Plotted.



Enters 25 ft. E of 1st.
m. W. of Vinton st.

R. May 21/91.

154
227 + 229
ok

March 28
98

Bernard Brady, D.L.

Permit # 6027.

Opened, Apr. 6, 1891.

Crossed

91. but not obtain

Reopened Dec. 5th 99

Closed " 16 " 99

5" pipes.

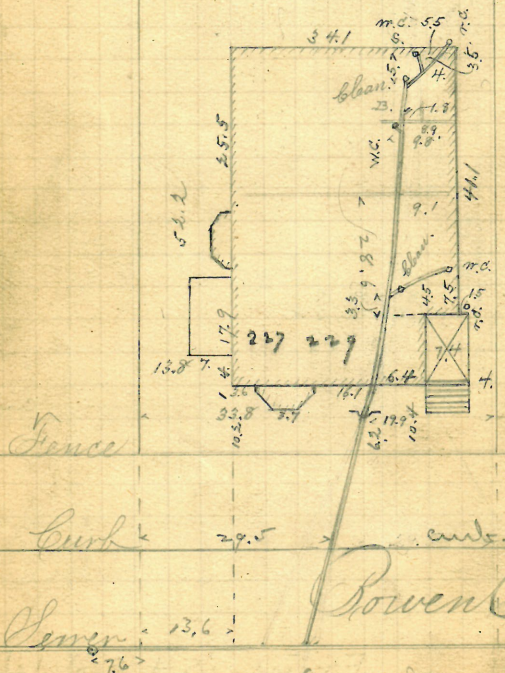
J. W. Furlong D. S. ~

Reopened Feb 10-1914

Closed " 1914

T. A. Perry D. L. - Cleanout

Plotted



Enter sewer 34.6 ft. W. of 1st. m.m.
W. of Thayer str. R. Mo.

7R. May 23/91

GONE

155

Daniel S. Hazard
109 Pearl St. W. cor. W. Clifflord.
J. A. Plackman, Atty.
Extension of Permit # 387.
See N.B. 130, p. 3-5 also,
Rad book # 24, p. 55.
Opened March 27, 1891.
Closed " 31, " "



Old work from sewer to fence. - See N.B. 130, p. 3.

156

P. 161

March 27
91.

Eliza K. Parkhurst,

213

Atwell's ave.

A. Blackman, D.L.

Permit # 6028.

Opened Apr. 1, 1891.

Closed, " 3 " 17. (ing st.)

Reopened for 13-1920

Closed " 13-1920

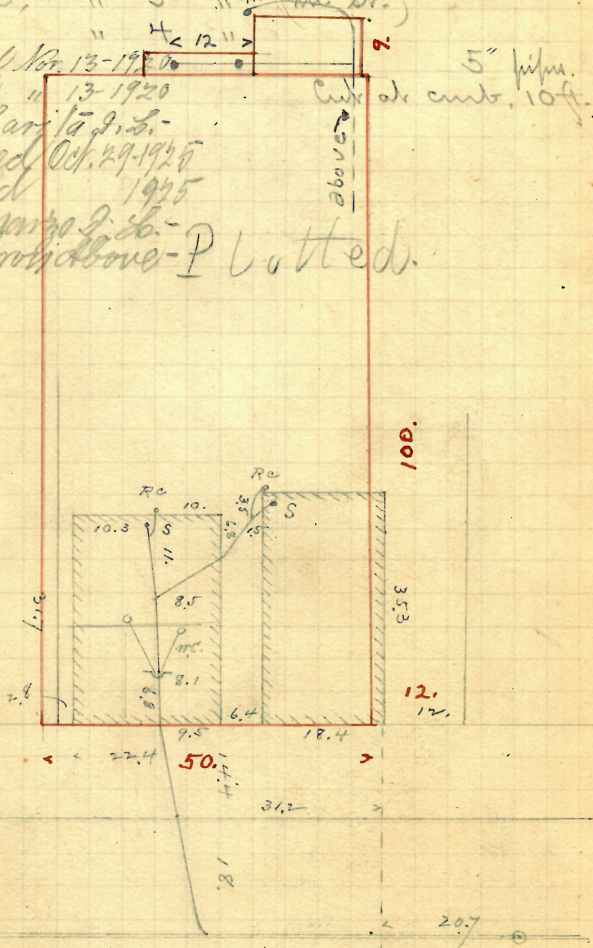
J. Barlow to D.L.

Reopened Oct. 29-1925

Closed 1925

J. Lampert to D.L.

Reopened 1944 - P Lotted.

Reopened Jan 14 1946
Closed Jan 14 1946
add Rd + 2 lots to S. 10 ftEnters sewer 46.6 ft. W.
of 3d m.h. W. of Dean st.

R. May 23/91

#P. 170
44

157

March 27
91.

Est. blank W. Capwell

Rear Randall St.

Daniel J. Duggan, D.L.

Permit #6029.

Opened Mch 30, 1891.

Closed " 31, " (in st.)

" Apr. 2, " (" promise")

closed off 12-1923

closed " 12-1923

Benedict D.L.

clean out -

See p. 163 for
this & near no.

6" pipe -
cut from par-
ing, in line of
cut, q. 1

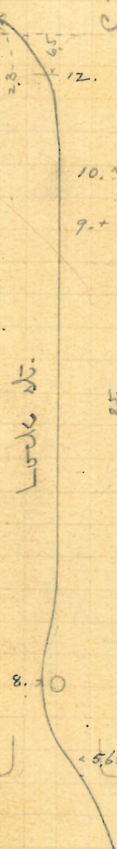
opened Dec. 12-1923

closed " 13-1923

A. Aricioli D.L.

clean out

Plotted.



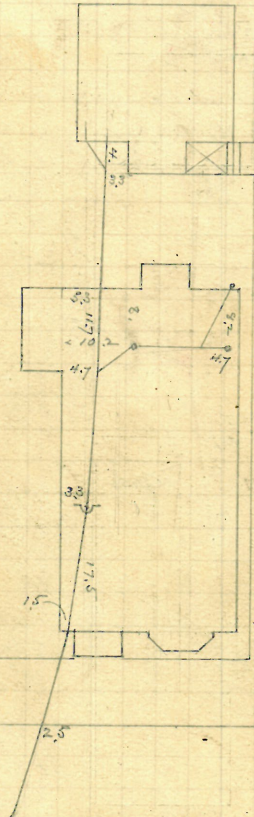
R. May 21/91.

Enters sewer 34.9 ft. N. of 2 in. N. of bridge.

March 30/91

Geo. N. Cummings,
32 Willow St.
Frank Read, M. S. C. 62 Willow St.
Permit # 6032.
Opened Mch 31, 1891.
Closed Apr. 2 "

5" pipis.
at curb, 10.



My Dear
John

Plotted.

R. May 23/91

Enters 53.7 ft. W.
of 3d. m. h. W. of
Parade Str.

мч 30
91-

Opened Apr. 14, 1891.

Closed " 16 "

Reopened Oct-25-98

Closed n 27th 98

J. H. Daniels J. L.

5" pipe
Cuts at cuts, 9.9

Reopened June 17-1908.

Closed " 17-1908

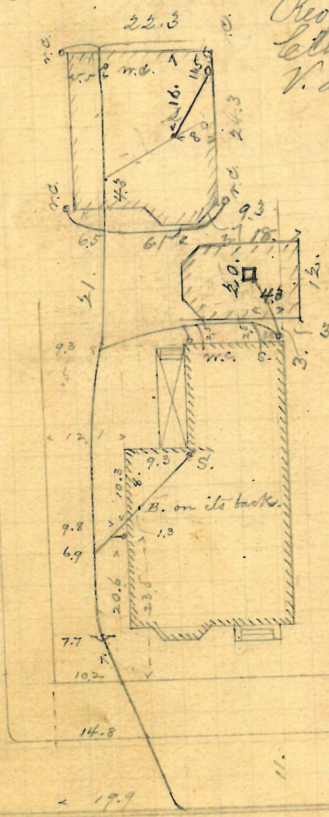
V. Larniguetti D. L.

Reopened July 19/30

138 Closed July 19/5

19/1
T. Barbagia

add 4" stack



Plotted

Lee st.

inters sewer. 68-1 ft.
of 2 m. n. S. of
well's ave.

1 R. May 23/91

162

J.D.

GONE

Mch 3

Antonio Vitale

Patte H. Cassidy, 121 ~~38~~ Acorn St.

Opened Apr. 1, 1891.

Permit # 6034.

Closed

Reopened July 24, 1902

Closed " 26-1902

Achilles H. - Relay

Reopened - Aug 10, 1933

Closed - Aug 10, 1933

J. Celli replace.

Reopened, Sept. 30, 1939

30 Closed - Sept 30, 1939

S. Amel fitano - clear

Open ridaw.



Enter sewer 102.2 ft.
S. of 1st. m. N. of
Cedar St.

R. May 21/9

Bowen No. 70

Bowen 2nd. house from Congdon

Broad No. 350

Broad No. 274

Broad No. 313 & 315

Broad No. 352

Broad No. 293

Broad No. 307 cor. Winslow Place

Broad No. 288, 290th & 296

Isaac H. Southwick Aug. 18. 1874

Wm. Whittiker Aug. 13. 1874

Geo. W. Hayward June 18. 1874

Alex F. Adie June 22. 1874

Sam'l Mowth & C. F. Gladding July 16. 1874

C. A. Pabodie Aug. 21. 1874

James H. Chace Aug. 25. 1874

Johanna Senft. June 15. 1874

Zacariah Cheffers June 15. 1874

109

123

55

57

78

136

140

14

54

Broad St. Sewer, house No. 8 Beyond St.	Bradford Allen Estate	July 22. 1874	- 87
Broadway No. 194	George W. Babcock	June 30. 1874	- 64
Broadway No. 136 & 138	H. P. and R. P. Gladding	July 3. 1874	- 68
Broadway No. 125	Wm. H. Low	July 11. 1874	- 73
Broadway No. 152	Ira Mathewson	July 29. 1874	- 101
Broadway No. 163	Nathl. L. Grant	Aug. 5. 1874	- 112
Broadway No. 164	Freeman W. Rose	Aug. 11. 1874	- 120
Broadway No. 54 and 56	Daniel Kemington	Aug. 18. 1874	- 129
Broadway No. 189	Wm. D. Hilton	Aug. 19. 1874	- 133

Brook No. 97

Brook S.E. cor Angell

Brook S.E. cor. Sheldon

Mary R. Mathews Aug. 27, 1874 144

Maria S. Day Dec. 29, 1874 163

Edward S. Underwood Aug. 28, 1874 146

C.

Lady cor. (Benefit. No. 128)

Camp No. 16

Camp No. 14

Camp between No. 8 and 10

Phillip W. Martin June 10, 1874 48

Wm. R. Forrest June 24, 1874 59

O. A. Read June 26, 1874 62

Ebenezer B. White Aug. 12, 1874 122

Carpenter No. 21	Elizabeth M. Bicknell	July 27. 1874	91
Carpenter St. Sewer, house No. 52 Broadway	Wm. and George S. Price	July 27. 1874	95
Carpenter No. 19	Merie Nichols	July 29. 1874	98
Carpenter No. 49 to 57	H. C. Cranston Trustee	Aug. 7. 1874	117
Carpenter No. 25	Geo. W. Whitman	Aug. 17. 1874	127
Carpenter No. 50-52	H. C. Cranston	Aug. 18. 1874	128
Carpenter No. 13	C. ^{N.} W. Harrington	July 29. 1874	99
Carpenter No. 49-57	H. C. Cranston Trustee	July. 29. 1874	100
Carpenter No. 8	C. ^{N.} W. Harrington	Aug. 3. 1874	108

Crazy No. 58	Rudolph Baertenstien	Aug. 31. 1874	150
Claverick No. 7 nd 29	Est. of Job Seckel	June 26. 1874	61
Charles ^{No. 162} cor. Martin	G. D. Nelson	Sept. 1. 1874	152
Claverick cor. Broad.	Bishop Hendrickan	June 29. 1874	1
Chestnut No. 64	Joseph A. Baker	June 1. 1874	39
Chestnut No. 29	Heirs of W ^m . H. Kemington	June 3. 1874	43
Chestnut cor. South	Ann Scott	June 13. 1874	51
Crazy St. Lower building on Borden St.	Union Cycle Co.	Sept. 4. 1874	157
Clemence ^{No. 163rd} 167	Mary E. Peck	Aug. 14. 1874	124

Clemence No. 11.

Clemence St. Lane, corner No. 174 & 173 Ward

Clifford No. 154

Clifford No. 123.

Clifford No. 114 and 115

Clifford cor. Richmond

Congdon St.

Congdon No. 67

College St. N side from Main to Newgate

Wm. M. Bailey

Madison Building & State

Aug. 23. 1874

Wm. J. Attwood & Son

Aug. 27. 1874

Egbert Owen

June 5. 1874

Chaunt Mr. E. Freity

July 11. 1874

Stephen A. Corke Jr.

Aug. 5. 1874

Geo. W. Babcock

July 16. 1874

Parquet Park

July 5. 1874

J. J. Wolf

Aug. 5. 1874

Wm. M. Bailey

July 17. 1874

Edg. No. 477.

Dance cr. Road
Dance cr. No. 88 Broadway

College cr. South Main St.
College St. N. side from South Main St. N. ^{W.} Mr. Bailey

Q.

Patrick Heekin

Marquardt Hotel Co.
J. H. Richmond

Q.

Marshall Hotel
July 14, 1874

July 17, 1874

Aug. 1. 1874

May 22, 1874

June 12, 1874

52

22

106

81

79

Edm. var. Eddy

Edm. No. 90

Edm. No. 93 ⁴/₂ 95

Edm. No. 133

Eddy var. Gray

Eddy No. 469

Eddy No. 476

Eddy No. 453

Wm. E. J. Mitchell Aug. 19. 1874

Wm. H. Robins Aug. 3. 1874

N. H. Wetmore - Agent June 10. 1874

James B. Dwyer May 15. 1874

John Green & Edward Campbell June 15. 1874

Wm. Jane Bailey July 8. 1874

Charles Allen July 2. 1874

Margaret M. Bennett June 29. 1874

131

93

49

11

53

71

67

63

Mountain No. 10

George No. 22

George No. 9

George ex. Cork

James No. 97

James near Amherst

F. Allen James

F.

Anna W. Brown

F.

Miss Anne Knightingale

Edward A. Green

Edgar B. Potter

John D. Willey

July 2, 1874

May 26, 1874

June 9, 1874

May 14, 1874

July 21, 1874

May 26, 1874

66

26

40

7

84

31

Government document
No. 22
Government, document

Baymarket No. 13-15
Baymarket No. 1

High cor. Canton

Hospital No. 122

Hospital No. 67, cor. Long

Ann & Eliza Reed
N. A. Moore

May 29, 1874
June 11, 1874

John H. Donadale
John H. Donadale

July 7, 1874
July 29, 1874

Math. R. Porter, Northtown

May 13, 1874

Whiting, Alexander

May 27, 1874

John Thorp

June 3, 1874

11.

42

33

6

97

70

50

35

Journal No. 12
Frontier cr. Jackson

Box cr. No. 4 Aug. 11.
Box No. 36-38-40
Box cr. Williams

Mary P. Holmes
Philip Lee

May 13. 1874
Aug. 8. 1874

Dennis Lane
City of Providence
Patrick Mahoney

Aug. 6. 1874
Aug. 11. 1874
Aug. 19. 1874

4
107

115
116
130

Dangley No. 66

Mathewson No. 9

Mathewson No. 48

Meeting No. 103

Meeting No. 9

Meeting Street.

F.

Roby. K. Huber

M.

Heaton & Co

Samuel & Wade

Osley & Deel

Elizabeth A. D. and Co

Wm. B. Murray

Sept. 1. 1874

May 14. 1874

Sept. 7. 1874

May 28. 1874

Aug 19. 1874

Aug. 24. 1874

-153

-5

-160

-21

-135

-138

North Main No. 402

North Main No. 166 ~~or~~ J. Grant.

North Grant ~~or~~ J. Main

North Main ~~or~~ General Lane

North Grant ~~or~~ No. 144 Brevet

N.

Edward Davis

Miss Catherine Williams

Thomas Furlong

Brooks B. Bennett

Jt. John's Church

P.

Aug. 17, 1874

July 15, 1874

July 22, 1874

July 29, 1874

Aug. 5, 1874

118

77

88

102

114

Plant or. No. 390 *Thunbergia*
Barroage or. No. 99 *Drift.*

Pallo No. 12

Pallo No. 14

Pallo or. Barroage

Pallo or. Barroage

Barroage No. 23

Plant or. Nut & Cliff

Price No. 111

Daniel V. Hayard

May 13. 1874

May & Mr. J. Edwards

Sept. 4. 1874

Thomas Price

July 14. 1874

Thomas Price

July 13. 1874

Thomas Price

July 13. 1874

Mr. J. J. George & Price

July 30. 1874

May & G. Fabyan

Sept. 7. 1874

Daniel V. Hayard

May 15. 1874

Mr. Brewster ^{and} James Webster

May 26. 1874

2

156

75

76

74

105

155

3

30

Price per Copy

Power sheet

Proselet No. 73

Point No. 92

Power No. 52

Point No. 95

Point sheet

Point Between Sheet four th.

Power No. 52

Power Ware House

Aug. 31. 1874

Paul O. Johnson

June 22. 1874

John Carpenter

July 24. 1874

Joseph Butler

Aug. 28. 1874

Robert H. Allen

Sept. 5. 1874

E. B. Manchester

Sept. 7. 1874

James F. Johnson

Aug. 24. 1874

B. Ray Nelson

Aug. 27. 1874

Robert H. Allen

Sept. 2. 1874

John - or Broadway

Myrtle or No. 97 Broadway

Richmond No. 108

Brooklet No. 79

Brooklet No. 88782

f

R

Mrs. W. Brogton

Thomas Boynton
B. W. Healey

Smith Green

Ed. Thomas Miller

Aug. 3. 1874

June 2. 1874

July 21. 1874

Aug. 29. 1874

Aug. 29. 1874

104

37

85

148

151

Five cr. Portland

David No. 126 cr. Bank

David No. 127

David No. 7 69

T

Samuel E. Cook

July 27, 1874

18

T

E. B. and W. Smith

May 26, 1874

27

S. W. Bailey

July 20, 1874

86

John V. Watley

July 27, 1874

94

Watman No. 43

Watman No. 56

Washington No. 152

Washington No. 155

Washington No. 139

Weybrett No. 57

Weybrett No. 4

Weybrett No. 97

W.

Charles F. King

Isaac Washburn

William P. Vaughn

J. N. Rice

Benjamin White

Alexander Dineen

Mary R. Ballant

Frederick C. Ballant

June 25. 1874

Aug. 20. 1874

July 24. 1874

July 27. 1874

Sept. 7. 1874

June 8. 1874

Aug. 14. 1874

60

134

90

92

159

47

126

125

William Street.

William St. Sewer, house No. 121 North St.

Westminster No. 304

Westminster No. 292

Westminster No. 254257

Westminster Street.

Westminster No. 69762

Westminster Street.

Westminster Street.

West Providence Land Co

July 31, 1874

William Street

June 20, 1874

J. N. Hallatt

May 20, 1874

George Johnson

May 18, 1874

Anna and Samuel Dwyer

May 19, 1874

Ally & Susan & Ada Alcott

May 23, 1874

Samuel & Elizabeth

May 22, 1874

Ally & Susan

May 26, 1874

Acade Exploration

May 27, 1874

Nestminder No. 86 ex. Breville

Nestminder St. Louis, house No. 75 High St.

Nestminder No. 29

Nestminder No. 110-114

Nestminder No. 73

Nestminder No. 54-56-58

Nestminder No. 276

Nestminder No. 59-69

Nestminder No. 66-70

Mrs. North Duncan

Madeline Symon

Alfred Duncan

Reynolds Watson Duke

Richard Allen

Old National Bank

Augustine Hopkins

Wheeler and Anthony

Edward T. Grace

May 15. 1874

May 18. 1874

June 3. 1874

May 30. 1874

May 27. 1874

May 25. 1874

May 22. 1874

May 23. 1874

May 28. 1874

10

9

41

34

32

28

24

23

20