

#783  
BK.

Oct 21, 1911

Estate of Harlow A. Hopkins  
84-86 46 Wilson St

J. A. Blackmar Dr.

Permit 635-8.

Opened Oct 13 1891

Closed Nov 14, 1891

Cut at curb 10-8

Pipes 5

Reopened July 7, 1928

Closed Aug 7, 1928

Reopened Aug 26, 1929

closed " " "

M. W. Hally Dr.

Chambers

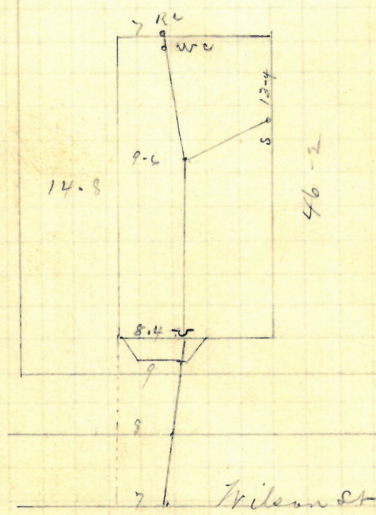
J. Deery & L. Clean -

Reopened May 24, 1933

Closed May 26, 1933

N. Colgrove St-renew

23-2



Entered Survey 43-3 North of  
1st in N north of Fuller St N Dec 9, 1891

2

Oct. 12

Henry P. Morgan, 20 Bainbridge  
 John Keigh, D.L. 23 Baker Ave  
 Permit # 6359

Closed Oct 14 1891

Reopened " 16 1891

Reopened Nov 2-1903

Closed " 3-1903

Geo. F. Lerrid D. L. -

Reopened May 24-1904

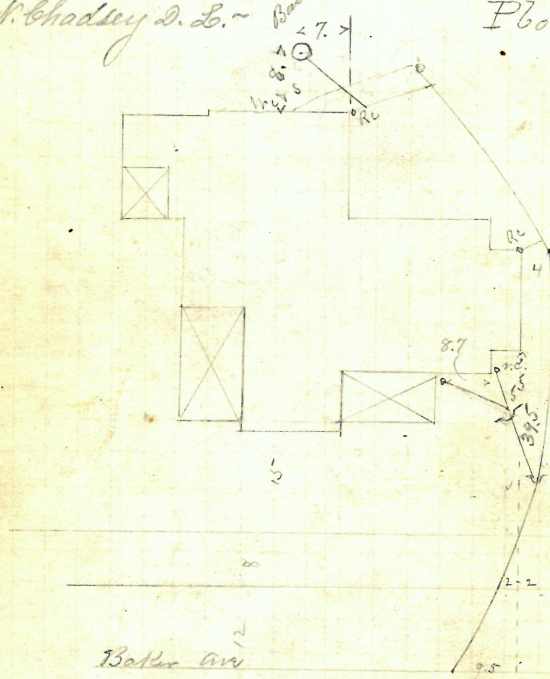
Closed " 25-1904

W. H. Chadsey D. L. -

cut at cut 9-9  
5"

Bain for surface water

Plotted



Entered Sur 65-8 South of 2nd  
 7th South of Broadway

R. Dec 9, 1891



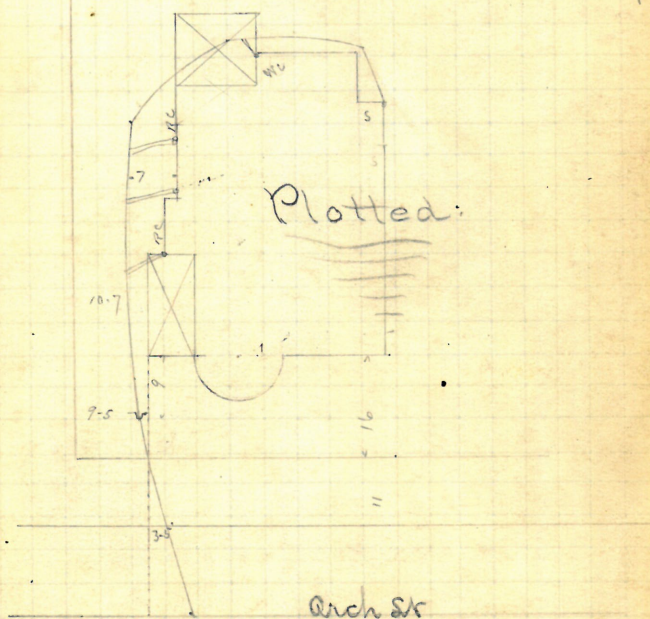
Oct. 13 <sup>3</sup>/<sub>91</sub>

James M. Anthony  
J. F. Read Co., D.L. #2 Arch st.  
Permit #6360.

Opened Oct 14, 1891  
Closed " 15, 1891.

cut at cut 10-8  
Pipes 5-

OR EX. WORK ON THIS PERMIT  
See Book 1675 Page 33. April 11, 1927



Entered Survey 49-4 North of  
1st mile north of Greenwich St. R. Jan 9, 1891

4 ✓

GONE

Oct. 17

Vincenzo Bufalo

153-157 + 16

467 Spruce St.  
N. E. Cor. Sutton.

J. F. Read D. L.

Opinid Oct 15. 1891

Cloud " 16. 1891.

Reopened Apr. 8-1901

Closed " 10-1901

A. Aiello D. L. ~

Reopened Mch 24-1905

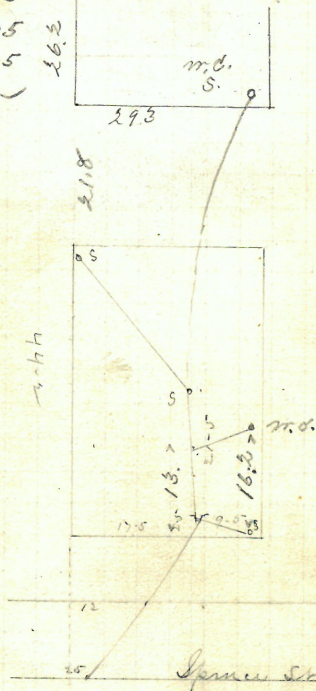
Closed 11 25-1905

A. Miller D. L. ~

Permit # 6361.

cup ab cub  $10^{-3}$

Paper 3-



Plotted

Intend Linsen 174-3 East of  
high at the Away St

R Dec 9. 1891



Oct. 13/91 5

Giuseppe Ramagnano and wife,  
3 McAvoy St.

J.F. Read, D.L.

Permit #6362

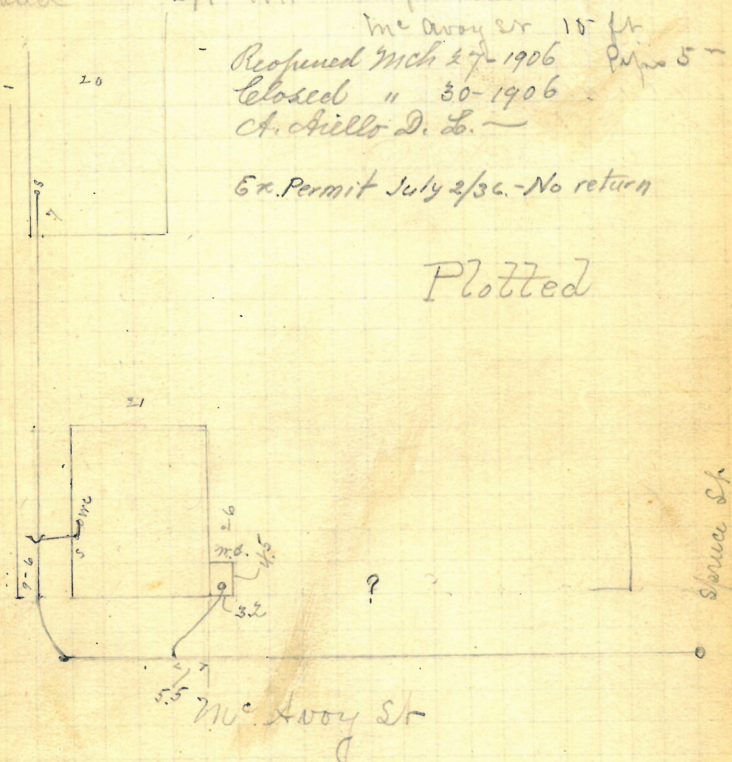
Opened Oct 17 - 1891  
closed " 27. 1891

cut at curb in Spinn er  
13 ft cut at curb in  
McAvoy er 15 ft

Reopened Mch 27-1906 Page 5-  
Closed " 30-1906  
Ch. Hills D. L.

Ex. Permit July 2/36. - No return

Plotted



Continue Spinn St Siver by m h at McAvoy St  
R Jan 9. 1891





H. 112-3

Oct. 15/91

Frank P. Gomes, { 109-111 }  
(Fox Point Blvd.)  
115-117 Tockwotton St.

J. A. Blackmar, D.L. Permit # 6364.

Opened Oct. 17/91.

Closed " 19/91

Reopened July 9-1921

Closed " 10-1921

J. B. M. Minter D.L.

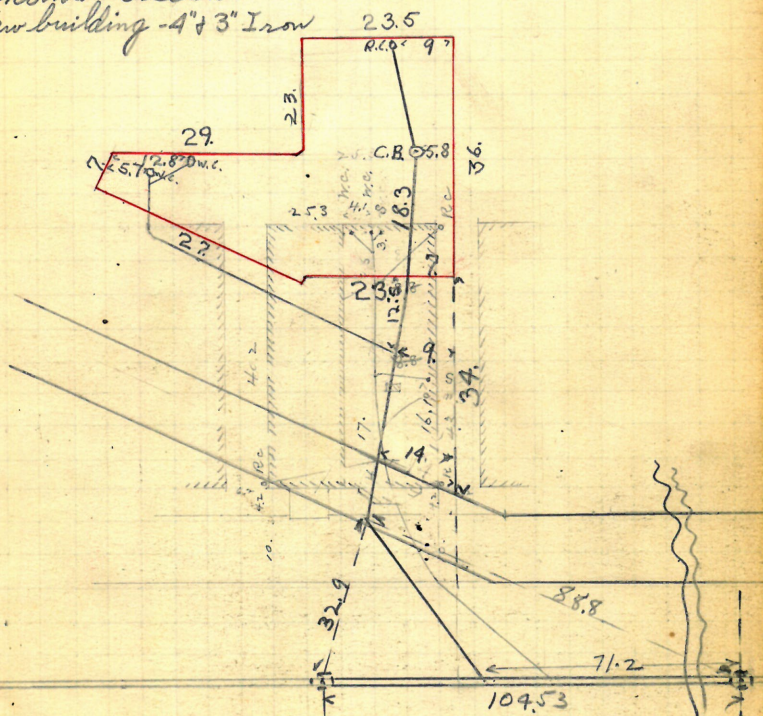
Reopened April 7, 1941.

Closed April 11, 1941

Thomas O'Leary

New building - 4" x 3" Iron

5" pipes  
Cut at curb, 10.5



Tookwotton St.

Enters sewer 71.2 f. E.  
of 1st. n.w. E. of Brooke St.

R. Oct. 21/91

Oct. 15/91.

Simon Henriksen  
43 and wife  
75 1st 19 Knowles St

John Keogh D.L. 43

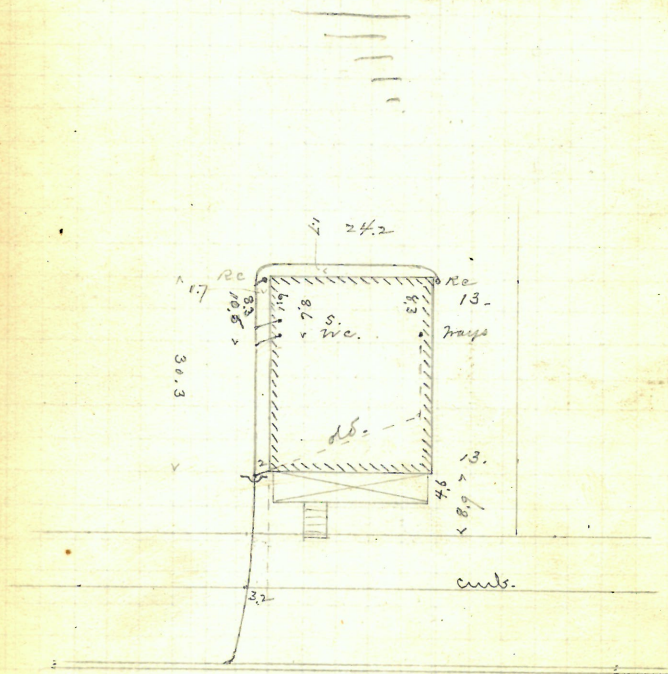
+9 Knowles St.

Opened, Oct. 15/91.  
Closed " 19 "

Permit # 6365.

5" pipes  
Cut at curb line, 16 ft  
below top of brick fon-  
dation wall of house.  
F. S. Oliver.

Plotted.



Enters sewer 70.5 ft. S. of m.h. at  
Gardner St.

R. Dec. 15/91.



II D

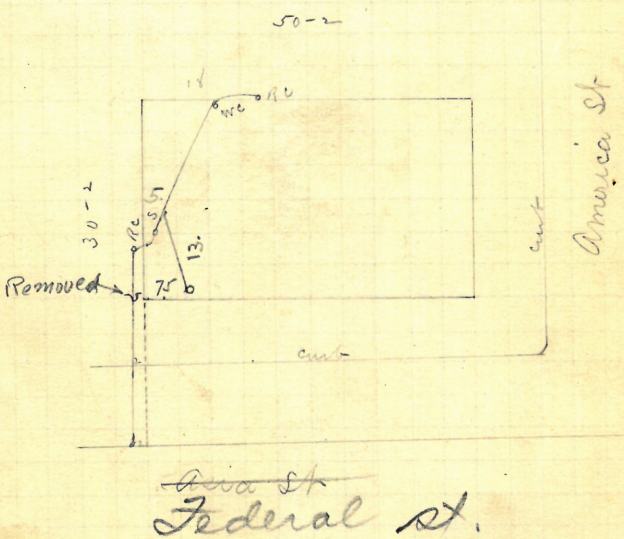
Oct. 15/91

Isabel E. Norton, Asia st.  
#18? S.E. cor. America st. #27?

J.F. Read W.L. Permit #6366.

Opened Oct 16, 1891  
Closed " 17, 1891  
Reopened - Oct 25, 1934  
Closed - Oct 26, 1934  
J. Stumario - 4" Iron  
Reopened - Sept. 24, 1941  
Closed - Sept. 25, 1941  
A. Mangione - Clear  
Remove Trap.

cut at curb 10-4  
Pipes 5"



Entered sewer 90-1 West  
of 2nd inch East of America St R Div 9, 1891

**REMOVED**

Oct. 16/91

Frederick S. Gardiner,

124 Cornwall St.

H.R. Chassey D.L.

Permit # 6367.

Opened Oct. 21, 1891.

Closed

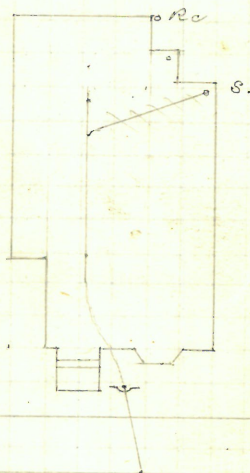
" 22 "

Reopened Sept 23-1909 - Cuts at cuts, 10.3.

Closed

" 25-1909 -

S.A. Petty D.L. - Clearout -



R. Dec 7/91



Oct. 16/91 11

Munnel Costra Cardoso

123-125

and wife,  
Sacknotton St.

J. A. Blackman, D.L.

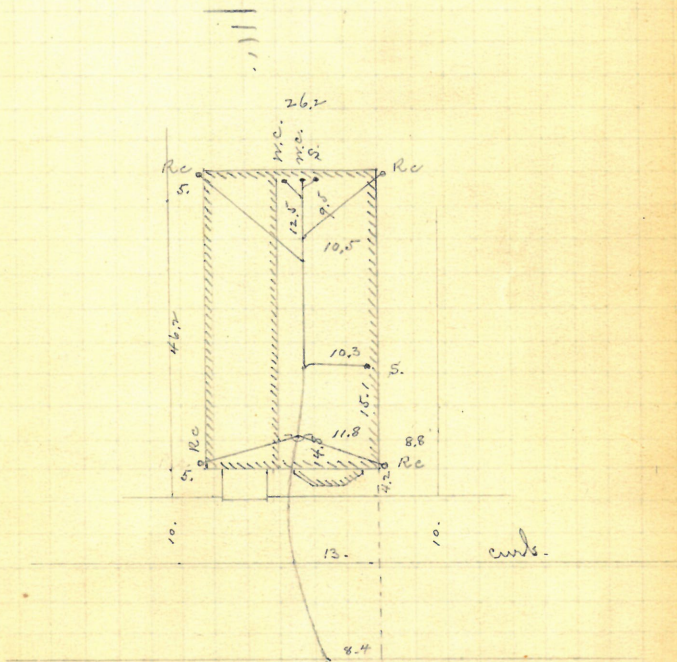
Permit # 6368.

Opened Oct. 17, 1891.

Closed " 19 " "

5" pipes.  
Cut at cuts, 10.6-

Plotted.



Enters sewer 50. ft. E.  
of 2 m. h. E. of Brook St.

R. Oct. 21/91-

12

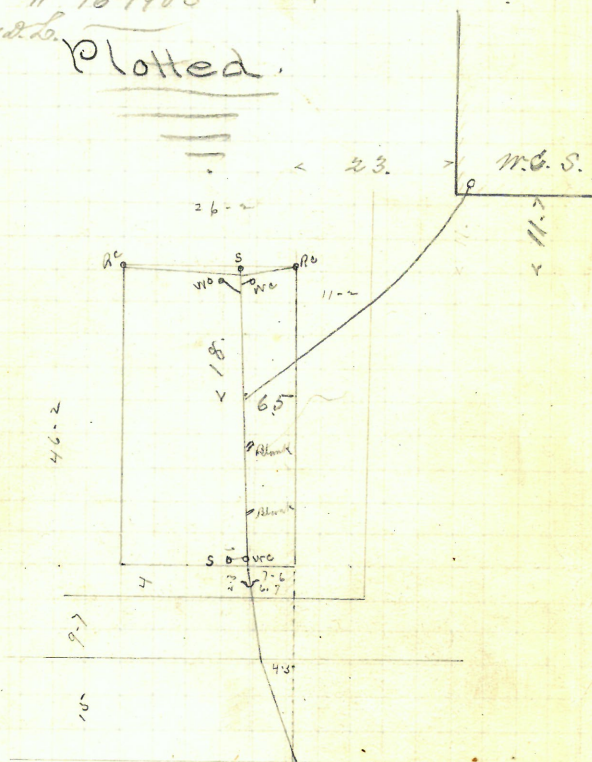
Oct. 16/9

John Dempsey,  
John Keogh, D.L. 83 Florence St.  
Permit # 6369.

Opened Oct 20 1891  
closed " 24 1891  
Reopened Mich 14-1903  
closed " 16-1903  
Wm Condry & Co.

cut at cut 9-5  
Pipes 5"

Plotted.



Florence St

Entered Sewer 94-1 north of  
Mh at Kaszith St

R Dec 9. 1891



GONE

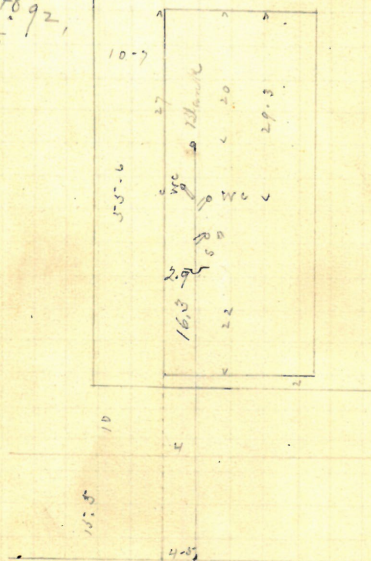
✓ Oct. 16/91. 13

John Birmingham & Wife,  
88-90 # 60-64 Julian St.  
John Keogh, D.L. Permit # 6370.

Opened Oct. 27. 1891  
Closed " 27. 1891 cut at cut 10  
Reopened Jan. 24. 94 Pipes 5-  
Closed Jan. 25. 94 } Dr. W. C. Keogh D. L.

Plotted. Reopened Apr. 16. 94 Clean Out  
Closed Apr. 17. 94  
John J. Deegan D. L.  
Clean out & change trap

Reopened Nov. 7. 92,  
by J. Keogh, to  
clean out.



Julian St

Entered Survey 37-9 north of  
2nd m h north of Appleton St R Dec 9. 1891





Oct. 17/91.

Opened Oct. 17, 1891

Permit # 6372

6" pipes

Cub. ab. cub., 116

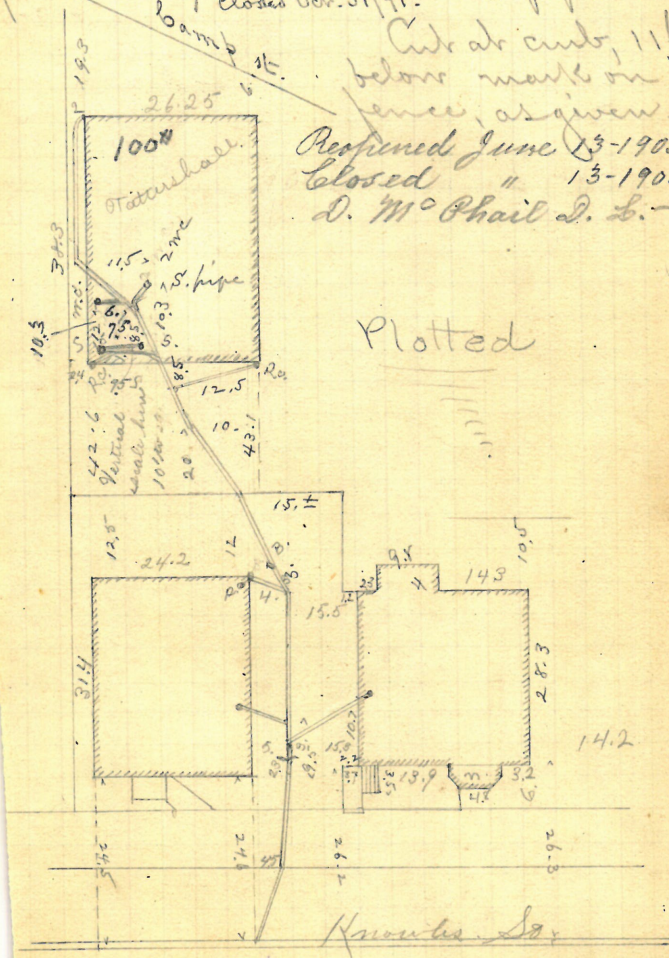
below mark on  
fence, as given

Reopened June 13-1905

Closed " 13-1905

D. M<sup>o</sup> Phail D. L. —

Plotted



Miss Susan 90. b. of 2.  
W. S. of Jenkins st. B.T.

R. Dec. 7/91.

Oct. 17/91.

Henry Watkins + wife.

46 Vernon St.

B. Brady D.L.

Permit #6373.

Opened Oct 17. 1891

Closed 21. 1891.

cut at curb 9-9

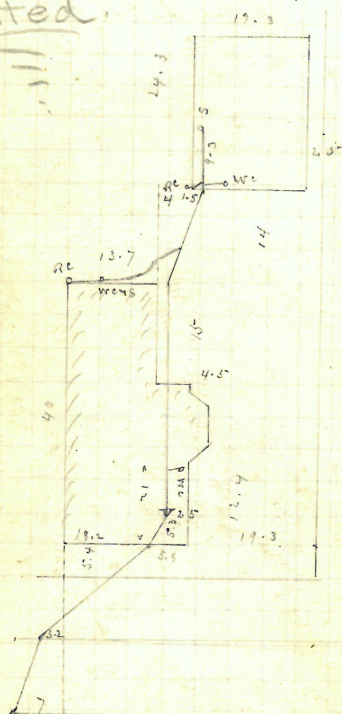
Piles 5-

Res July 16 1947

Clo July 16 1947

J. Mankeloff

Plotted.



Vernon St

Initial Survey at 3rd m h  
N. of Battery St

R Dec 9. 1891



✓ Oct. 17/91. 17

Phillip Tally and  
Estr. of John Slattery  
114 Vernon St.

B. Brady DL.

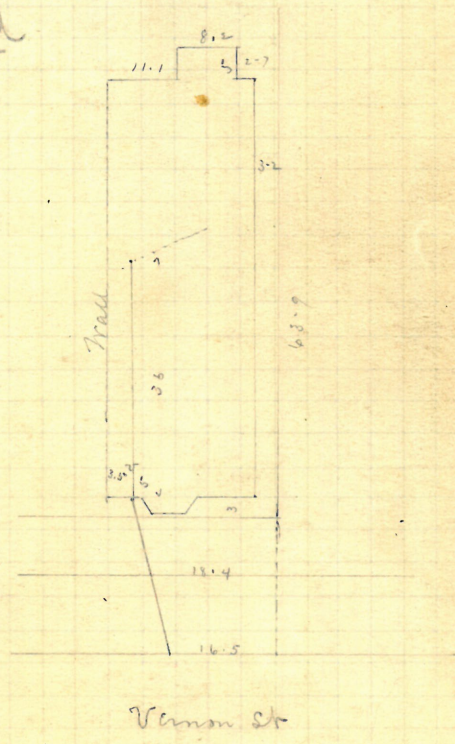
Permit # 6374.

Opened Oct 19. 1891  
Closed " 21. 1891

cut at cut 10-8  
Pipes 5"

Leak No. 1750 g. No. 116-

Plotted



Intend Survey 47-5 East of  
2nd N. E. East of Battery St D R Dec 9. 1891

18 ✓

P. 168  
# 68

Oct. 17/91

Bridge Laving ~~12 Nov 50~~  
18 Perkins St.

B. Brady P.L.

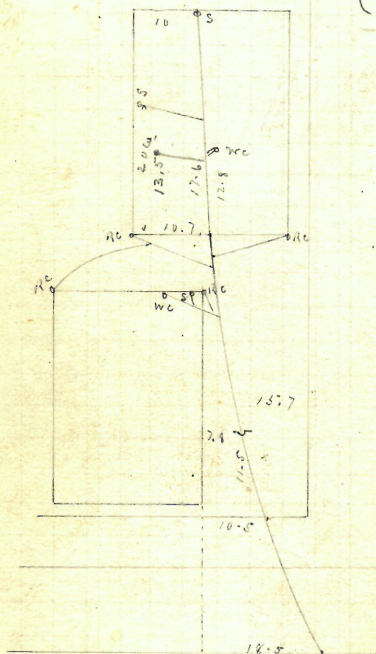
Permit # 6375.

Opened Oct. 23-11 1891  
closed 27.

cut at curb 10-4  
Pipes 6 in

Reopened 2/3/53  
Closed 4/4/53  
M. Jacobbo - remove clear

Plotted.



Perkins St

Entered Survey 98-2 West of  
high at Monroe St

R. Dec 9, 1891





201

Oct. 19/91.

Noble T. Greene

476 Pine St.

J. A. Blackman, D.L.

Permit #6377.

Opened Oct. 20. 1891

closed .. 22. 1892

10/ Reopened - Oct. 17, 1949

116 Closed - Oct. 18, 1949

M. Amtrano - clear

cut at cut 11

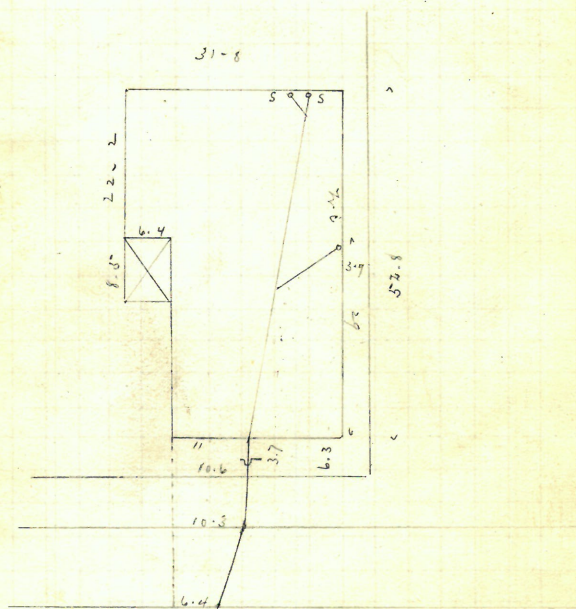
Pipes 5

Reopened - 4/19/54

Closed - 4/19/54

K Reed - add 4" iron stack

Plotted



Pine St

Entrada Serran 108 - South of  
12<sup>th</sup> In the South of Sumner St

R Jan 12/92



Oct. 21  
19/91

John T. Farrell, 21-23  
50 Marshall St.  
John Keogh, D.L. Permit # 6378.  
Opened Oct. 28, 1891.

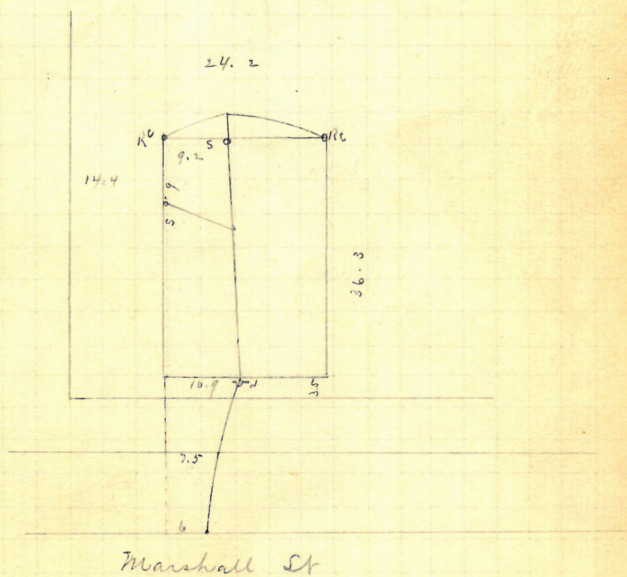
Opened Oct 28 1891

Cloud " 31. "

cut at cut 10  
Pipes 5"

2.0.

Plotted



Enters sewer 4.4 ft. N.  
of 1st. m. N. of Pierce St.

22 ✓

Oct. 20  
1891

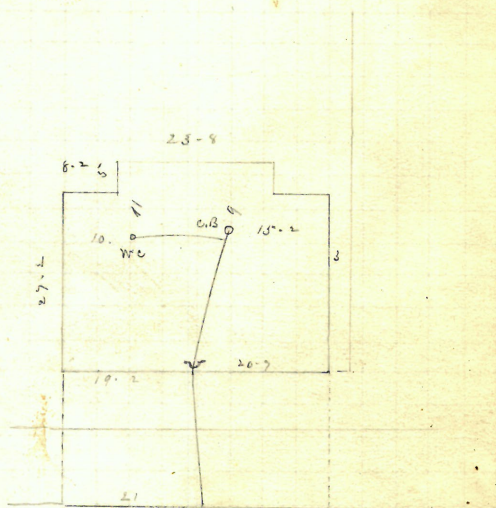
Emily R. Matteson, Grove St.  
 Thor Phillips & Co. #62? Permit #6379.

opened Oct 24. 1891

closed " 27.

cut at curb 10-5

Pipe 6-

Plotted.

Grove St

Entered Survey 1162-4 East of  
 M. R. at Tobey St. R. Dec 9. 1891



Oct. 21/91. 23

This connection is sealed

Benj. L. Chace, and wife,  
263 Greenwich St.

H.B. Root, D.L.

Permit # 6380.

Opened Oct 23<sup>rd</sup> 1891

closed " 27. 1891

Reopened June 2-1921

Closed " 3-1921

E. Gibbons & Co. Cleanout

cut at curb

Pipe 5"

Reopened Oct. 1-1925

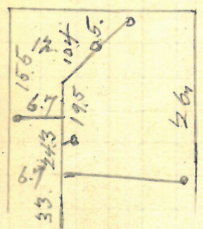
Closed " 1-1925

Plotted by H. B. Root D. L.

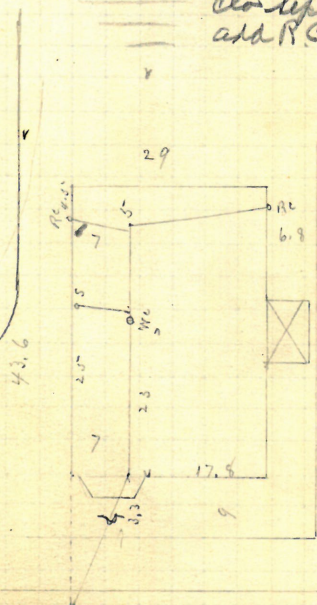
Reopened 29 1949 7 1/2 1949

closed 29 1949

and R. C. McElmurry P. L.



Ex Works  
Sept. 30-1925



Greenwich St

Entered Sewer 36-5. north of R Jan 8. 192  
2nd m h South of Reawing St

24 <sup>vv</sup>

GONE

Oct. 21/91

Providence Ins<sup>n</sup> for Savings, #  
Plenty ~~St~~ <sup>St</sup> 609  
N.W. cor. Broad.

J. Frank Read, S.L.

Permit # 6381.

Opened Nov 2 1891

cloud " 4 -

Reopened mch 13 1896

Closed " 13 1896 J. F. Read S. L.

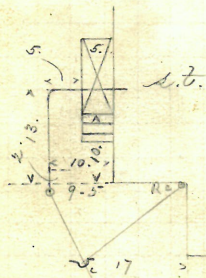
cut at curb 10-2

Pipes 5 -

Reopened Nov 17. 1933

Closed - Nov 17. 1933

now Lyons - clear  
Plotted



Plenty St

Entered Survey at 2<sup>nd</sup> m h  
North & Broad St

R Jan 9. 1891



IP  $\frac{159}{37}$

Oct. 21/91

Richmond Land Co.,

Erford L. Martin, Lessee,

219-221

261

263

W. Exchange St.

J. Frank Read, D.C.

Permit #6382

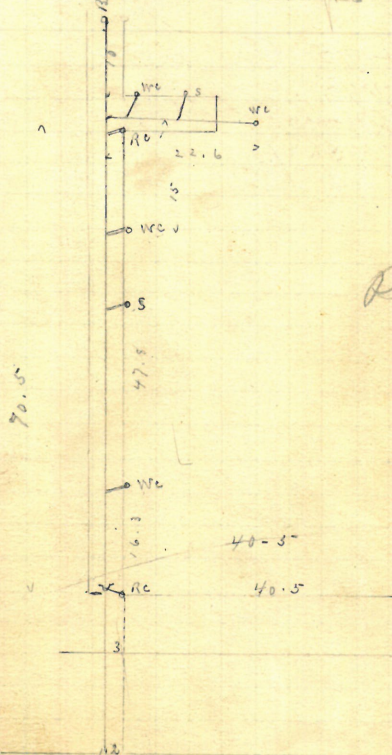
Opened Oct 22 1891

Cloud

" 28"

cut at curb 10-4

Pipes 5"



Plotted,

Front Exchange St

Entered Survey 229-7 north of  
in h at Aborn St

7 R Dr 9, 1891

26 ✓

Oct. 21/91

Mary A. Ryder.  
 John Keogh, D.L. # 86 Florence St.  
 Permit # 6383.

Opened Oct 24. 1891

Closed " 27. "

Reopened Aug. 29. 94

Closed Aug. 30. 94

Cleanout

Reopened June 1-1918 Ploxed.

Closed 1918

J. Phillips D.L. Cleanout

Reopened June 1919 46 4/17/46

Clo June 1919 46 4/17/46

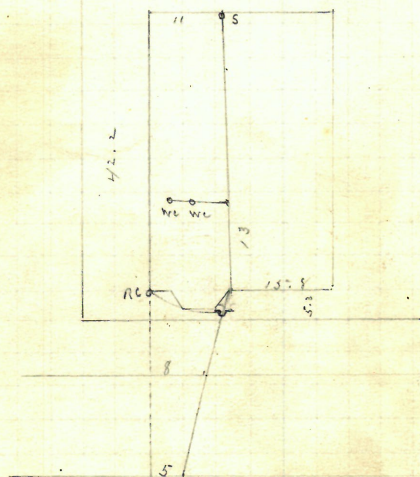
Clean up S. Wells T. Gammon D.L.

cut at cut 9-9

Pipes 5"

John J. Degnan D.L.

27-3



Florence St.

Entrada River 97-1 North of m h  
 at Kaseuth St

R Dec 9. 1891





Oct. 21 / 91.

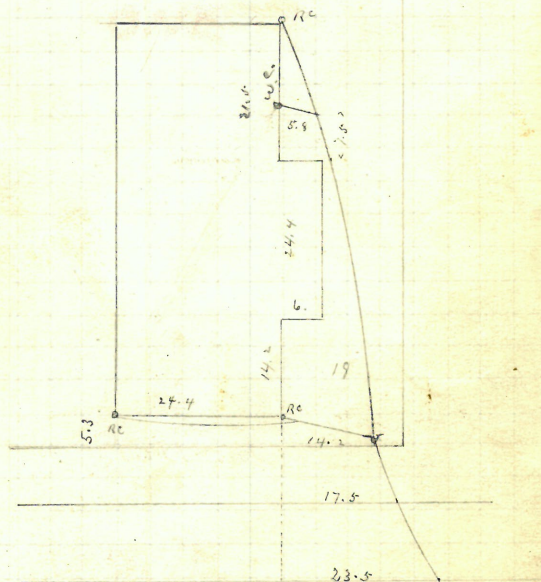
Willard Manchester,  
#75 ~~58~~ Cornstock ave.  
J. A. Blackmer, DL. Permit # 6385.

Opened Oct 22 1891

closed .. 26. 1890

cut at curb 10  
Pipes 6"

Plotted



bonstock ave

Entered Seven 75 - N. West of 1st  
N. West of Taylor St R Jan 14. 1912



P

✓ Oct. 22/91. 29

Cornelius Carmody + wife,  
69-71 Julian St.  
John Keogh, D.L.  
Permit # 6386.

Opened Nov 3<sup>rd</sup> 1891

closed " 7 " "

Reopened June 12<sup>th</sup> 94

Closed June 14<sup>th</sup> 94

John J. Deegan D.L.

Reopened - May 25, 1936

Closed - May 25, 1936

J. Krawick - old J.S.F.I.D.

cut at curb 10-2

Pipes 5- -

Reopened & closed May 16<sup>th</sup> 99

J. Deary D.L.

Reopened Sept. 28-1921

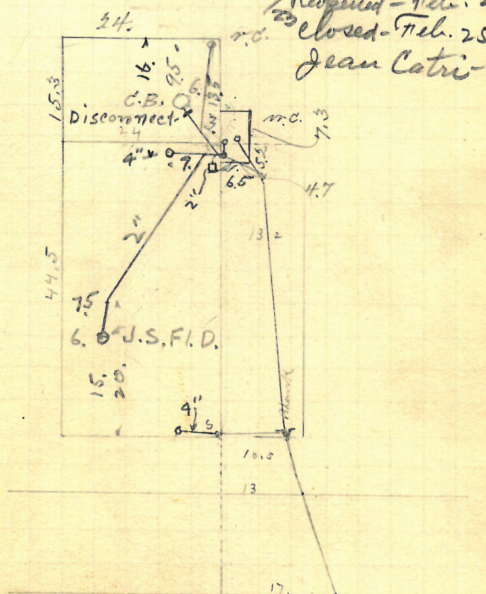
Closed " 30-1921

P. Gallo D.L.

2<sup>nd</sup> Reopened - Feb. 23, 1938

2<sup>nd</sup> closed - Feb. 25, 1938

Jean Catri - add-



Julian St

Entered Sur. 95-6 North of  
2<sup>nd</sup> m h South of Roseworth St R.D. 9. 1891

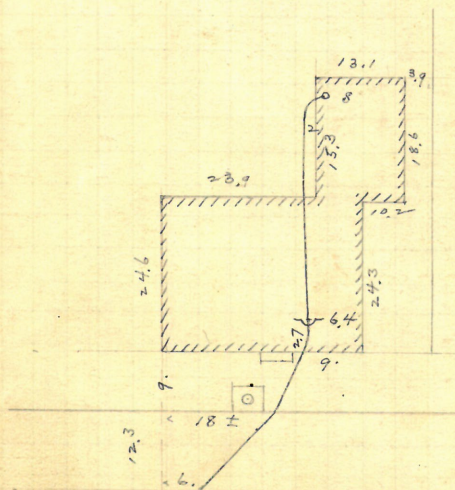




✓ Oct. 24/91. 31

Est. Mary Ann Luther,  
 85 Transit St.  
 J. A. Blackman, D.L. Permit # 6388.  
 Opened Oct. 27, 1891.  
 Closed " 28, " 1891. 6" pipes  
 Cut at curb, 9.9

Plotted



Enters sewer 45.8 ft. W.  
 of 1st. m. N. E. of Thayer St.

R. Jan. 16/92

32 ✓✓

Oct. 24  
91

Christopher Dexter,  
18 Portland St.,  
& Cor. Hayward.

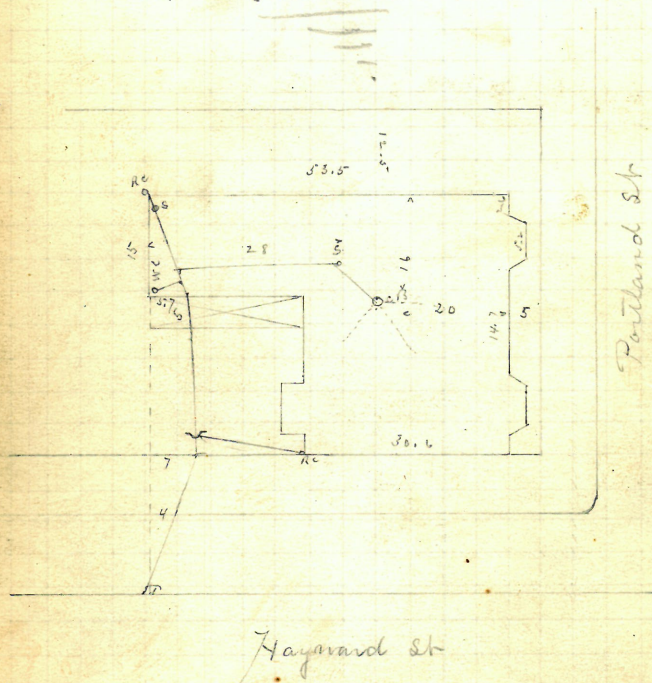
R. Brady, DL

Permit # 6389.

Opened Oct. 29. 1891  
Closed " 29

cut at cut 10  
Pipes 5"

Plotted.



Entered Sewer 37-5 East of 2nd  
in the West of Pearl St

R Dec 9. 1891

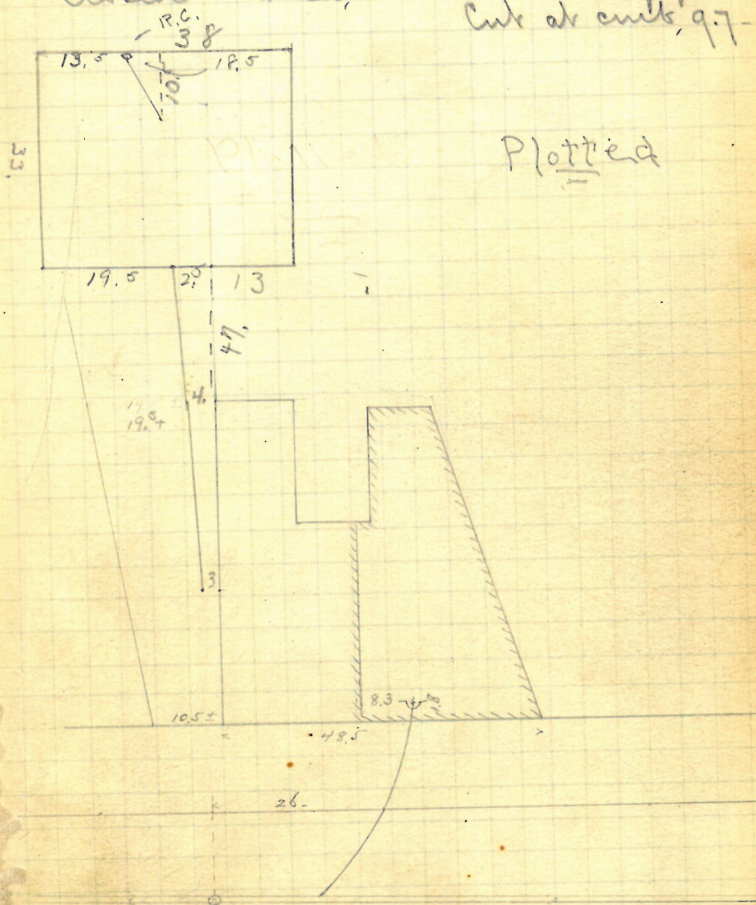


33  
Oct. 26/91.

Richard W. Lawler & others,  
663 No. Main St.  
Franklin, N.H.

Permit # 6390.  
Opened Oct. 27, 1891.

Closed " 28, " " 5" pipes.  
Cut at curb, 9.7



Enters sewer 16.4 ft. S.  
of 22 m. S. of Doyle ave.  
R(3)

R-Dec-7/91





✓ Oct. 28/91. 35.

Est. Mary K. Newell,  
313-315 No. Main St.  
H.R. Chadsey, D.L.

Permit # 6392

Opened Oct. 29, 1891.

Closed " 31, "

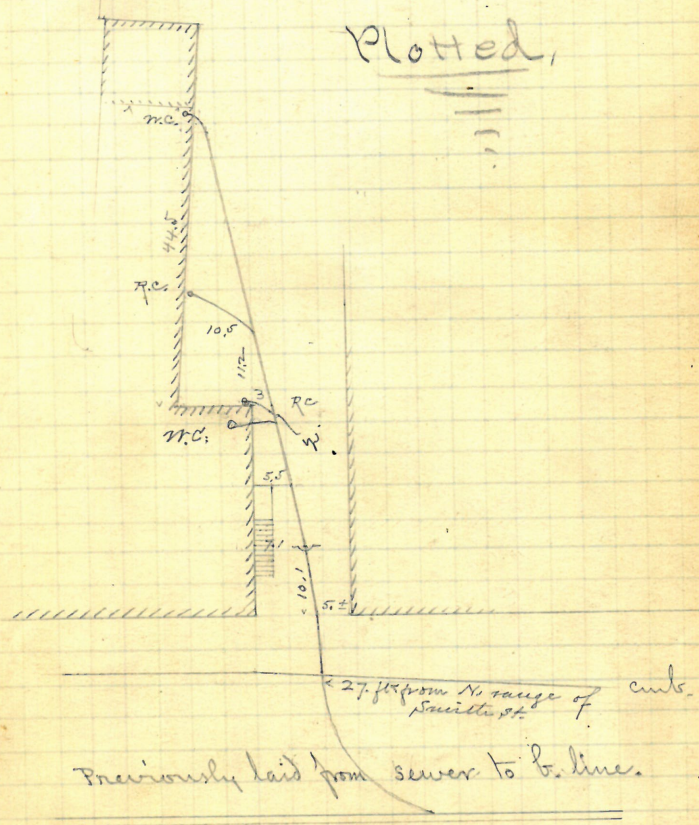
Reopened July 1-1907

Closed " 1-1907

T. B. Boyle & Co.

5" pipes

Plotted,



Entire sewer 59.2 N. of  
main range with 5th side of Smith St.

R. Nov. 20/91

Oct. 28 / 91.

James Cornell, p.  
#8-783-6

# 0 - 7 Time Sr.

N.W. Corner Dyer St.

B. Brady D.L.

Permitte = 6393.

Opened Oct. 29, 1891

Closed

Reopened - June 18. 1934.

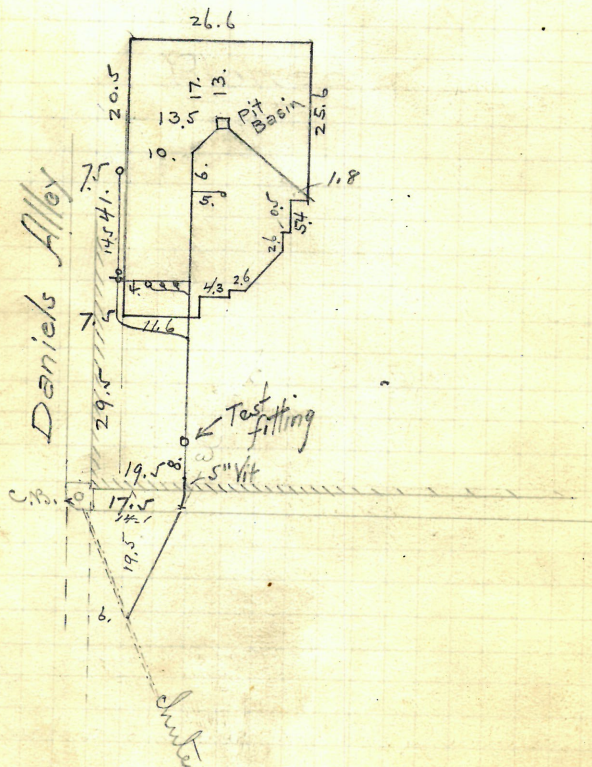
Closed - June 21. 1934

Opened - June 18. 1934  
Closed - June 21. 1934  
F. Dupuis. add. 3"4 I-5" Vt

5" high to

intervals, then 4" in

Cut ab cut,  $3\frac{1}{4}$  +



Enters catch basin chute  
9.5 ft. S. of building.

R. Dec. 7/91



37  
Ocr. 28  
91

Daniel J. O'Connell and  
John F. O'Connell,  
183 Lorain St.,  
N.Y.C. #104  
St. McKenna St.

B. Brady, D.L.

Permit # 6394.

Opened Nov. 2, 1891.

Closed " 4, "

6" pipes.

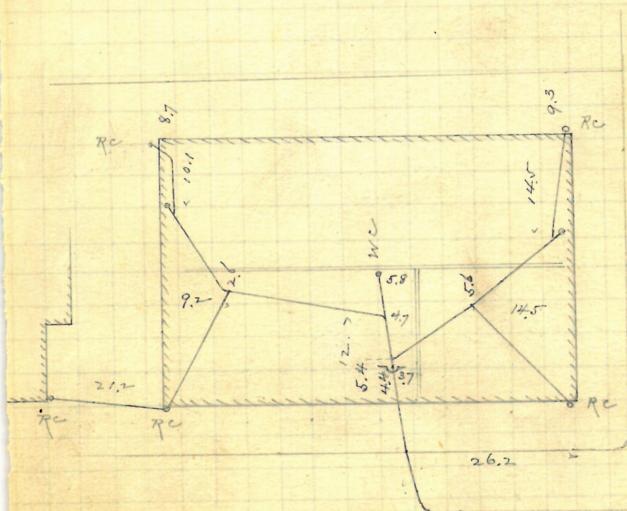
Respired Mch 15-1909-

To Cleanout W. Miller & Co.

Conto de custo, 10%

plotted.

Some work has since been done here without permit or notice.



Carlin & P.

Cross St.

Enters sewer 22.5 ft. W. of  
1st. m. N. W. of McKenna St.

NR. Dec: 7/91.

Oct. 28 / 91.

Daniel J. O'Connell and

John F. O'Connell,

#172 McKenna St.,

opp. Crofts St.

B. Brady H.L.

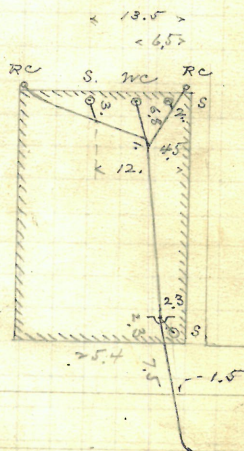
Permit # 6395.

Opened Nov. 18, 1891.

Closed, " 19, "

5" pipes.

6" to curb.

Cut at curb, 10.3, as  
reported by Frank Flaherty  
Work begun without notePlottedEnters sewer 4.6 ft. N. of  
2<sup>d</sup> m.h. N. of Whelden St.

R. Dec. 7 / 91



91.

419

Friendship st.

Cor. Somerset St.

B. Brady B.S.

Permit # 6396.

Opened Oct 30 1891

cloud " 31.

cut at cut  $10^{-4}$

Reopened Nov. 4<sup>th</sup> 96

Pipes 5<sup>n</sup>

Closed " 7" 96

Reopened May 4<sup>th</sup> 97

H. M<sup>rs</sup> Goldrick D. D.

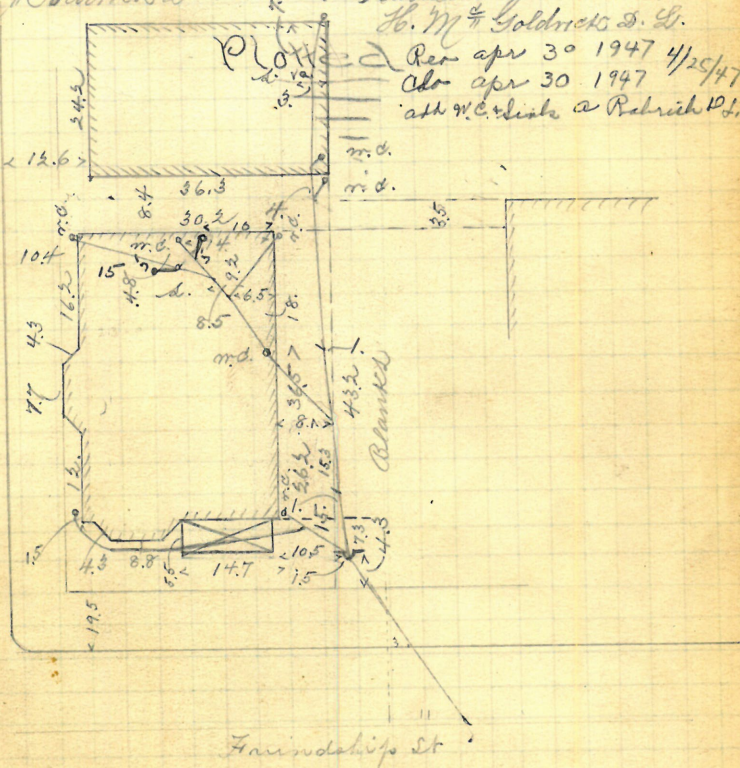
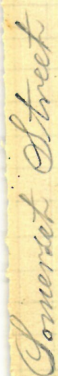
Closed " 6 " 97

H. M<sup>d</sup> Goldrick D. L.

Recd apr 30 1947 4/25/47

also apr 30 1947 7-1/47

add W.C. & Link a Robert D.L.



Entered Sewer 183-9 back e  
m h. at Portland St

J R Dwyer. 1891

✓

Oct. 28/91

26 Carpenter  
N.E. cor. Shepard St.  
Reminds #6397.

Chon Ch

cut at circ 10-2

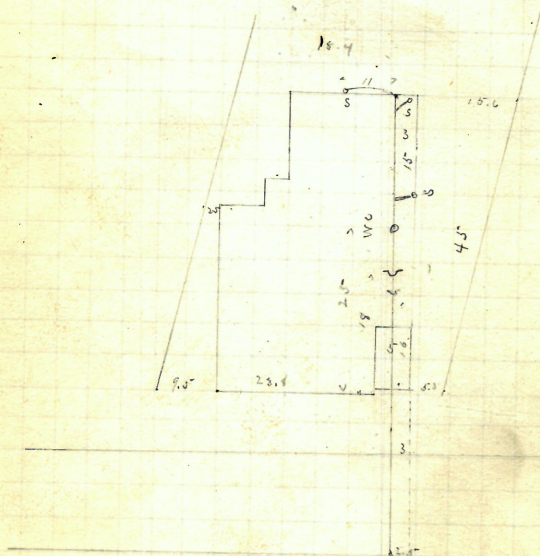
Pipes 6 in

*J. B. Williams Lib.*

Eleonore

Peap Sept 19/  
Closed. - 21/32  
Fossi Df.

Plotted



Carpenter St.

Extend Sewer 89-2 West of 1st  
N. E. East of Seman St. R Dec 9. 1891



P-157  
13

Oct. 28/91. 41

Mary H. Holbrook,  
#40 Walsey St.  
J. Frank Read, D.L. Permit #6398.

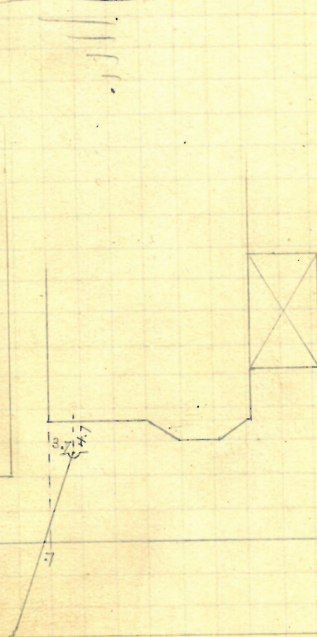
Opened & closed by F.E. Shann  
without notice and before permit was issued.

Reopened, and  
closed Nov. 6 1891.

\* Oct. 15/91 - J.F.P.

Reopened April 8-1918  
Closed 1918  
M. Lyndon & Co. - Cleanout

Plotted



Enters sewer 105.5 ft. E. of  
N.W. at E. line of Concord St., (North.)

R. Feb. 8/92.

42 ✓ *Removed*

Oct. 30/91.

Daniel V. Eddy, 98 Lippitt st.  
J. Frank Read W.L. Permit # 163

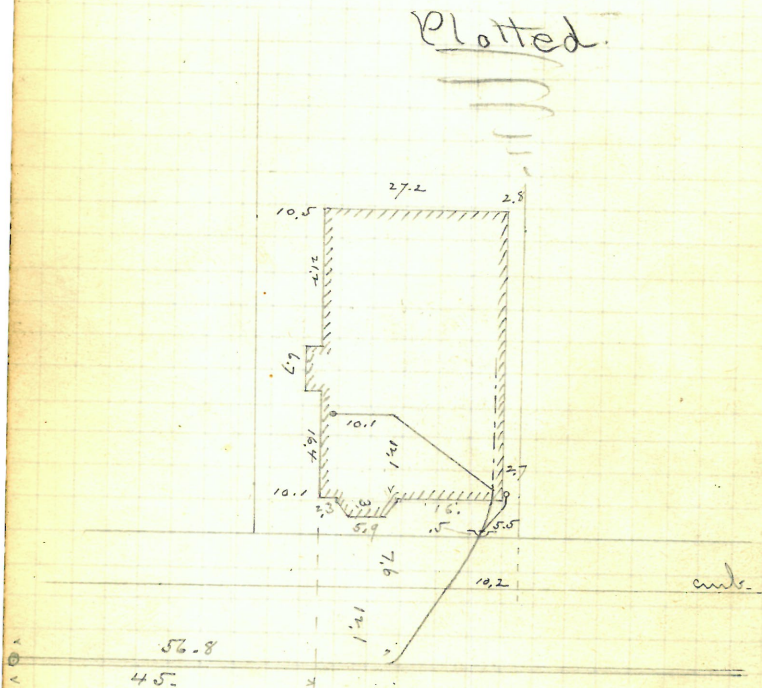
Opened Oct. 30, 1891.

Closed Nov. 2 "

Permit # 6399.

6 pipis to trap  
Cult at curb, 8.3

Plotted.



Enters sewer 56.8 ft. E.  
of 2<sup>d</sup> mtr. E. of Camp st.

R. Dec 7/91



✓ Oct. 30/91. 43

Stephen P. Salisbury.  
114 Beacon ave.  
J. Frank Read, D.L. Permit # 6400.

Opened Oct 31. 1891

closed Nov 3<sup>rd</sup> "

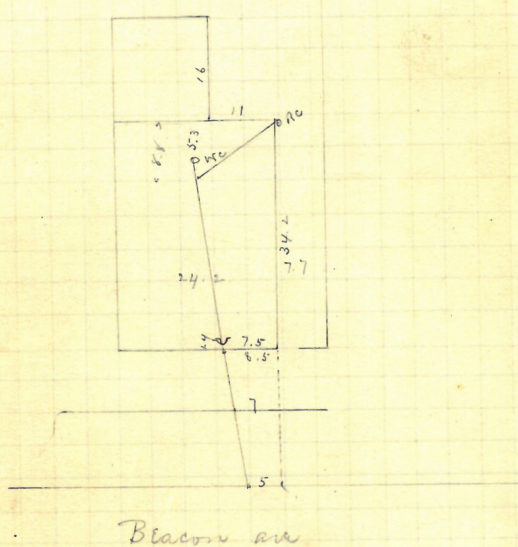
Reopened Nov 10 1891

closed " 16 1891

M. Leonard L. Clemons

cut at cut 10-5  
Pipes 5"

Plotted



Entered Sewer 70-9. North of  
2nd m h South of Frank Read R Dec 9 1891

44 vv

H. - 157  
13Oct. 30  
91Mary C. Talbot, 38 Halsey st.  
N.E. Cor. Congdon st.

J. Frank Read, D.L.

Opened by F.E. Shaw\* (date not known) without  
permit or notice. Permit # 6401.

Closed Nov. 5, 1891.

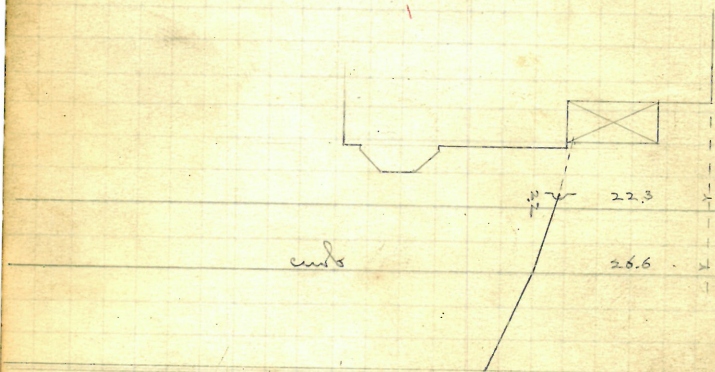
\* Return says connection  
was made Oct. 19/91.

16 pipes.

Curb to curb, 8.6

Plotted

Congdon st.

Entire sewer 50.3 ft. E. of  
w.h. at E. line of Congdon st. (North)

R. Feb. 8/92



P-157  
8

45  
Oct. 30/91.

Irvin H. Potter,  
#23 Brown St.,  
Meeting St. sewer.

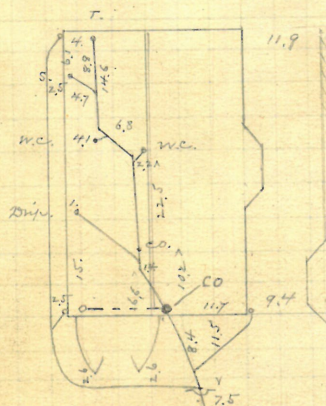
John W. Furlong, D.L. Permit #6402.

Opened Oct. 5, 1891.  
Closed Nov. - "

Reopened Mar 5, 1941  
Closed Mar 10, 1941  
G. I. Reinsart add 4" iron

6" pipes.  
Cut at curb, 6.8.

Plotted



Enters Meeting St. sewer  
31.4 ft. W. of 7th m. W. of Thayer St. R. Dec. 7/91.

ROBERT STRUCK

KPLAN  $\frac{169}{39}$

Oct. 30  
9

Mary Adams

Mary Adams.  
John Keogh, D.R. #186, 102 Lippitt St.

Permit # 6403.

Opened Oct. 30, 1891.

Closed Nov. 4, "

8/19 Received - Aug 29, 1943

Closed - Aug 21, 1943

M. Rossi - C. - g. siden.

5" pipes.  
Curb ab curb, 8.5

OPENED 8-30-72

CLOSED 8-30-72

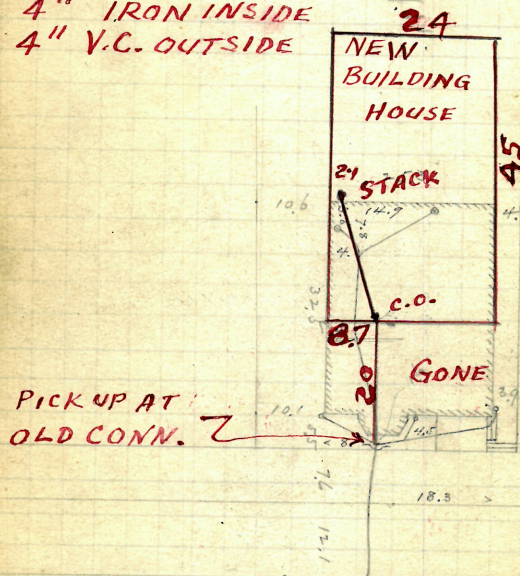
D.L. JOSEPH DE FALCO

NEW BUILDING Plotted

INTO OLD CONN.

4" IRON INSIDE

4" V.C. OUTSIDE



PICK UP AT  
OLD CONN.

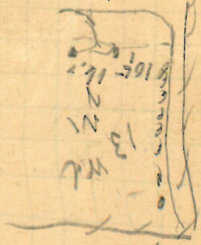
Enter sewin 133.1 ft. E. of  
2<sup>d</sup> m. E. of Camp St.

R. Dec. 7/0



Resurveyed July 19 1945  
 closed July 19 1945  
 add M.A. July 19 1945

$\frac{1783}{471}$



July 6 - 1916  
 July 8 - 1916  
 July 10 - 1916  
 July 12 - 1916  
 July 14 - 1916  
 July 16 - 1916  
 July 18 - 1916  
 July 20 - 1916  
 July 22 - 1916  
 July 24 - 1916  
 July 26 - 1916  
 July 28 - 1916  
 July 30 - 1916  
 Aug 1 - 1916  
 Aug 3 - 1916  
 Aug 5 - 1916  
 Aug 7 - 1916  
 Aug 9 - 1916  
 Aug 11 - 1916  
 Aug 13 - 1916  
 Aug 15 - 1916  
 Aug 17 - 1916  
 Aug 19 - 1916  
 Aug 21 - 1916  
 Aug 23 - 1916  
 Aug 25 - 1916  
 Aug 27 - 1916  
 Aug 29 - 1916  
 Aug 31 - 1916





48 ✓ **REMOVED**

Oct. 31 / 91

St. Ansgarius Church,

#11? Maple St.,  
N.E. cor. Beacon Ave.

T. Phillips & Co., D.C.

Permit #6405.

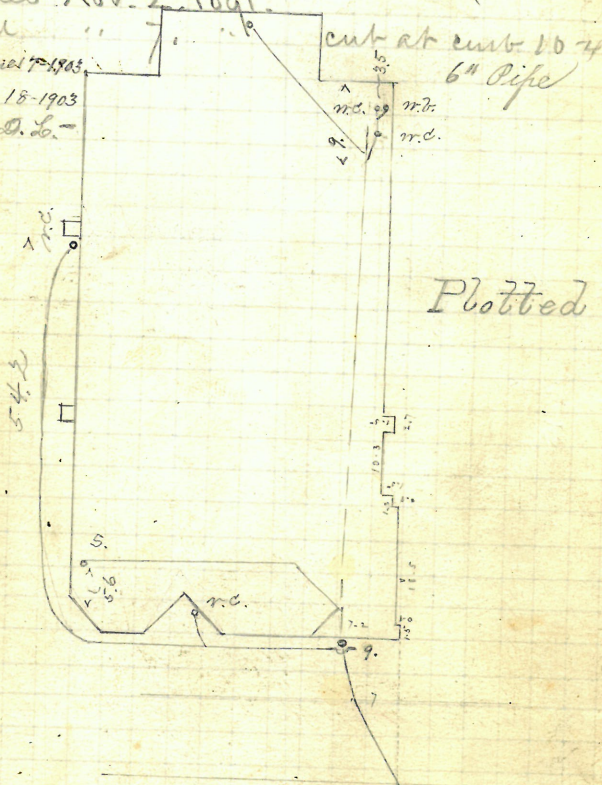
Opened Nov. 2, 1891.

Reopened Jan. 7, 1903.

Closed " 18-1903

J. Appleton D.C.

Reopened Feb. 4-1919 - Reopened & closed Aug 3-1905  
Plotted " 1919 - J. Deary D.C. - Cleanout -  
C. Whitcomb D.C. - Cleanout - Reopened & closed May 1914  
C. Whitcomb D.C. - Cleanout -



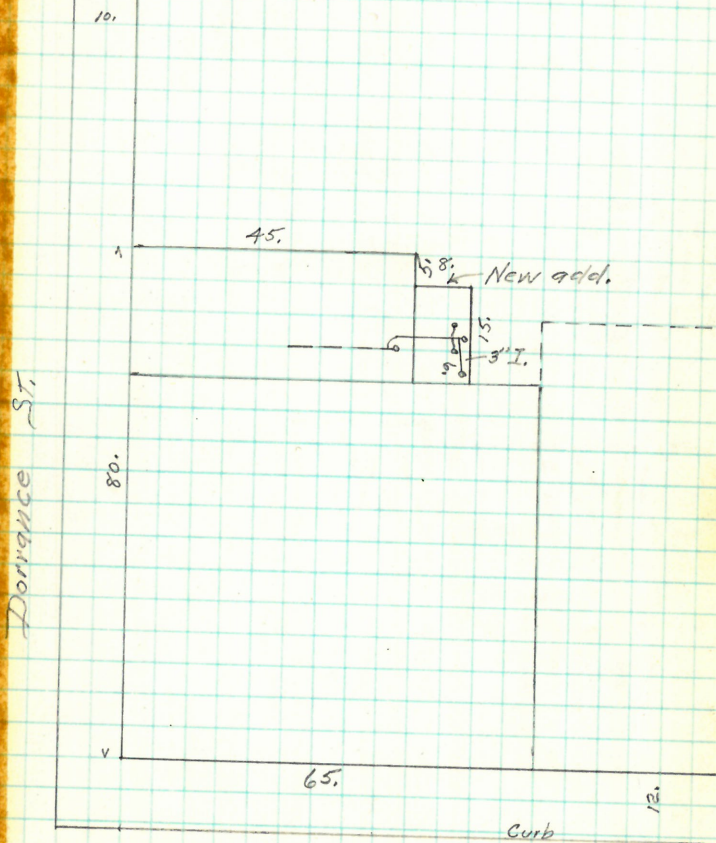
Maple St

Enters sewer 68.2 ft. W. of  
3d m.v. W. of Plain St.

R Dec 9, 1891

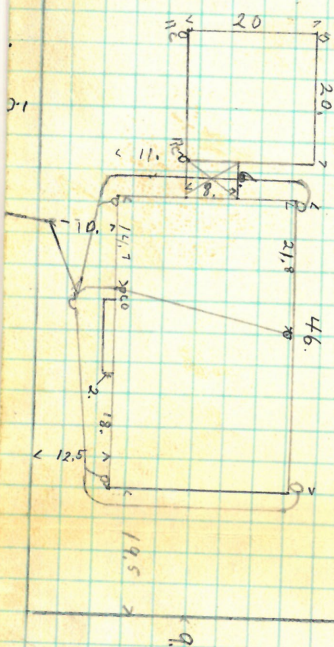
X6489  
 Opened 5/21/63  
 closed 5/21/63  
 3+4" Iron.

Charles Fletcher  
 83-105 Dorrance St.  
 D.L. H. Katzman



Weybosset St.



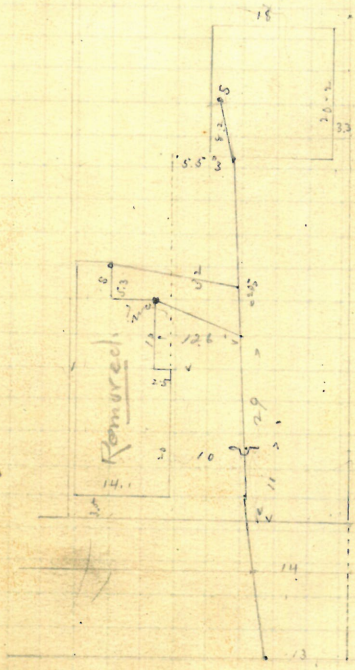


9/23 Received Sept. 23, 1941  
 R. B. Borden - New Haven  
 New York: 14, 11

Medway St.

Mary J. Sprague  
 33. 66? Plenty st.  
 J. Frank Read, D.L. Permit # 6406.

Opened Nov 10. 1891  
 closed 11. 1891 cut at curb 10-6  
 Reopened June 19 93  
 closed June 20. 93 H. R. Chadsey, D.L.  
 Reopened Aug. 24 1910  
 closed " 24-1910  
 A. Kille D. L. - Cleaver



Plotted

Plenty St

Entered Sewer 25-5 north R Jan 14 192  
 4 4th m. to north of Broad St



50 ↓

GONE

Nov. 2/91.

Francis Trainor,

J. Frank Read, D.L.

133 Vinton St.

Permit # 6407.

Opened Nov 9. 1891

Closed " 12

Reopened June 27-1911

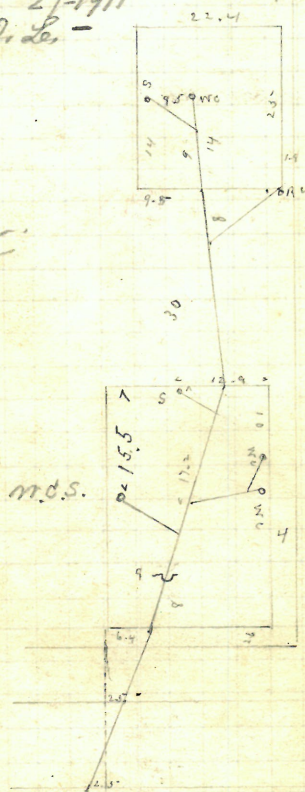
Closed " 27-1911

F. A. Perry D. L. -

cut at curb 10-6

Pipes 5-

Plotted.



Vinton St

Entered sewer 28-9 South of  
3rd St South of Atlantic R.R. 11. 1911

GONE

51

✓ Nov. 2/91.

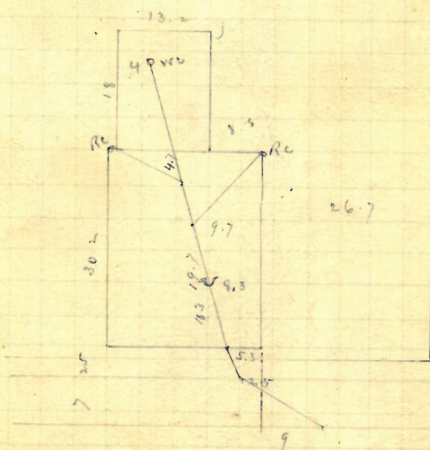
Corisanda M. Knowles  
J. Frank Read, D.L. 11 Barclay St.  
Permit #6408.

opened Nov. 5/1891

closed " 7. "

cut at curb 10-9  
Pipes 5"

Plotted



Entered Survey at 2<sup>nd</sup> m h  
North of Federal St

R Dec 11, 1911





**Removed**  
Geo. W. Benson

✓✓ Nov. 4/91- 53

J. F. Read, D.L.

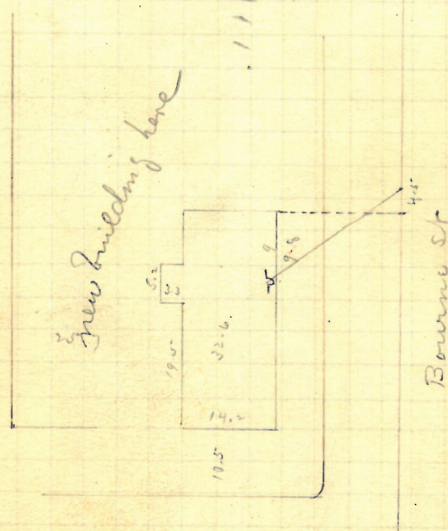
Bourne St.  
S.E. cor. Otwell's ave. #58

Permit # 6410.

Opened Nov. 4. 1891.  
closed " 5

cut at cut 8-4  
Pipes 5

Plotted



Entered Survey 64-5 north  
of 2nd mile south of Otwell's ave

R. Dec 11/91



Nov. 4/91

John W. Carter,  
J. Frank Read, D.L. #192? Lockwood St.

Permit # 6411.

Opened Nov 5. 1891.

closed .. 9. ..

cut at cut 10-6

Pipes 5-

Mr. Brighton was Inspector.

Entered sewer 15. West of  
1<sup>st</sup> m to West of Beacon Ave R. Dec 8/91





56

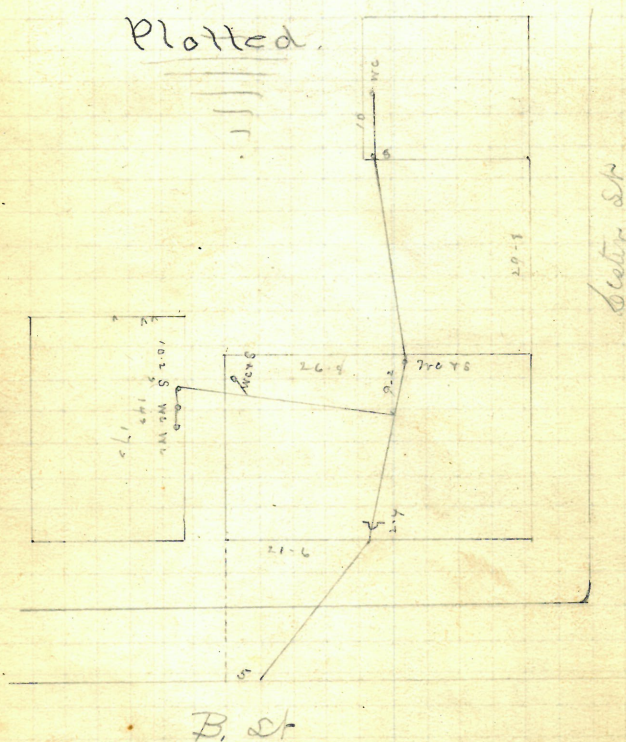
REMOVED

Nov. 5/91.

Mary A. O'Brien

S.W. cor. B. St.,  
Lester St.J. Frank Read, D.L.  
Opened Nov 9, 1891  
closed 13.Permit # 6413.  
cut at cut 11-4  
Pipes 5-

Plotted.

Entered Survey 102.5 north of  
21.6 m h South of Lester St R Dec 17, 1891

Nov. 6 57  
91.

Parish of St. James Church,

577 Courtland St.  
S.W. cor. Broadway.

J. Frank Read, D.L.

Permit # 6414.

Opened Nov 7, 1891

Closed " 9. "

Reopened Sept 23, 98

Closed " 27, 98

C. Tierney D. L.

Reopened Sept 1902

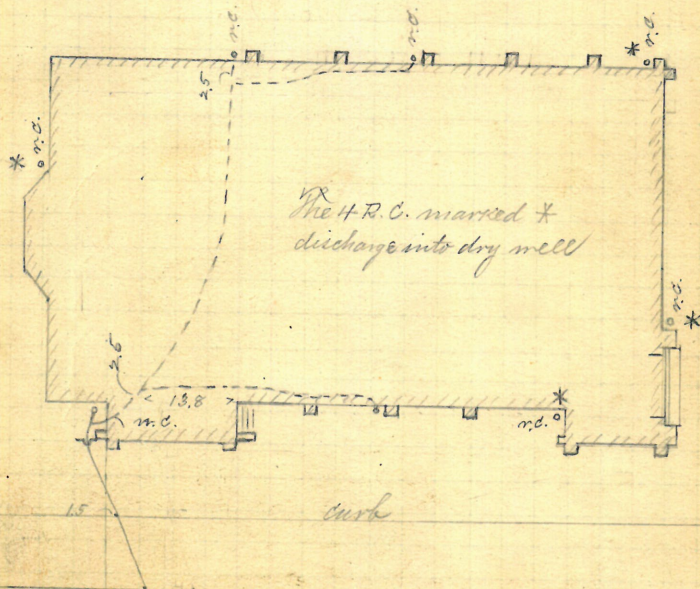
Closed " 1902

E. R. Brennan D. L. Work done

by J. Deary previously -

cut at curb 10-6  
Pipes 5

Plotted



Courtland Street

Entered Survey 87-2 South

in L. at Broadway

R. Dec 17, 1891









60

✓

# 167  
1

Nov. 7/91.

City of Providence,

Wm. V. Wallace, Lefee,  
7 Meeting St.

Wm. J. Hogg, D.L.

Opened Nov. 9, 1891.

Closed " " "

Reopened Sept. 19-1923-

Closed " 31-1923-

W. J. Hogarty D.L. - Elmoult

Repair - Plotted

Permit # 6417.

Reopened Mch. 19-1923

Closed " 20-1923

W. J. Hogarty D.L. Repair

Reopened Oct. 9-1924

Closed " 12-1924

W. J. Hogarty D.L.

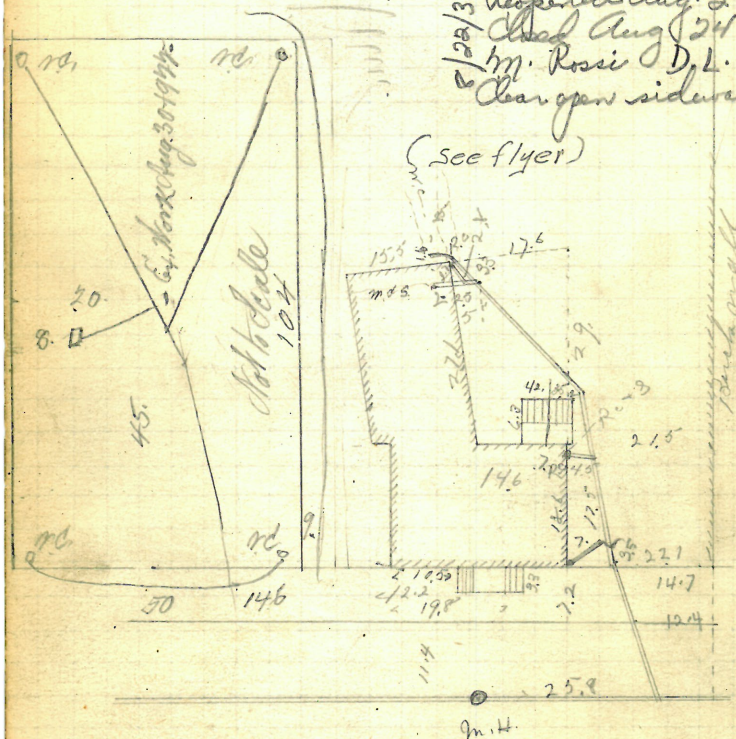
Reopened Aug. 23/38

Closed Aug 24/38

Wm. Rossi D.L.

Clear open sidewalk

(See flyer)



Enter sewer 63.4 ft. E.  
of 1st. m.d. E. of W. Main St.

R. Dec 7/91

X 6417

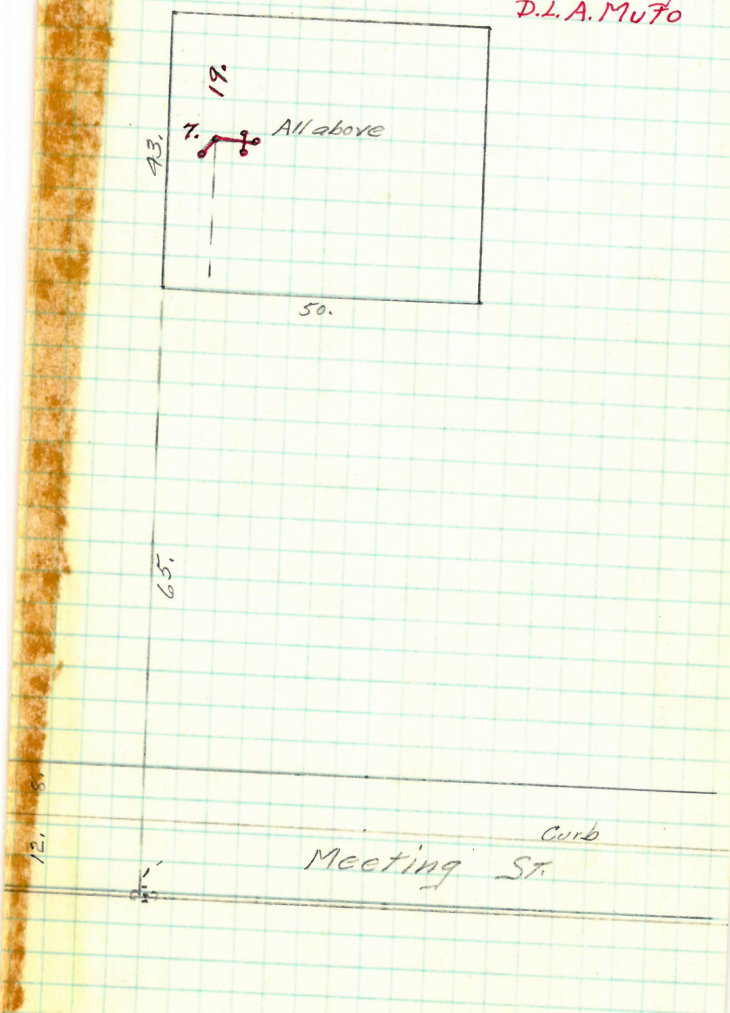
60

Opened 5/4/63

Closed 5/4/63

3-4" Iron (Add)

Owner  
City of Prov.  
15 Meeting St.  
D.L.A. Mufo





✓ Nov. 9/91.

Thomas Libbons

John Keogh D.L. <sup>126</sup> ~~92~~ Julian St.

Permit # 6418.

Opened Nov 9. 1891

Closed " 12 89

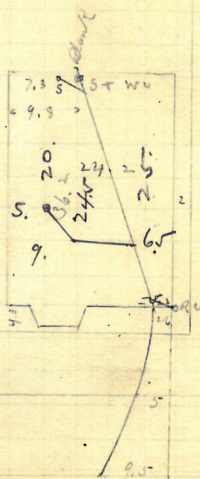
cut at curb 10

Reopened Aug 15. 1934

Closed Aug 18. 1934

Pipes 5-

McSweeney - add 2" I.

Plotted

Julian St

Entered Sewer at 2nd mth  
North of Massena St

RR Dec 17. 1891

62 ✓

REMOVED

Nov-9/91.

Caroline M. Farmington

John Keogh, D.L. #56 ~~26~~ ~~28~~ Jefferson St.  
B. Common  
Permit #6419.

Opened Dec. 4, 1891.

Closed " 10, "

Reopened Nov 27 1945

Closed Nov 27 1945

add for sale + W.C. Putnam Co.

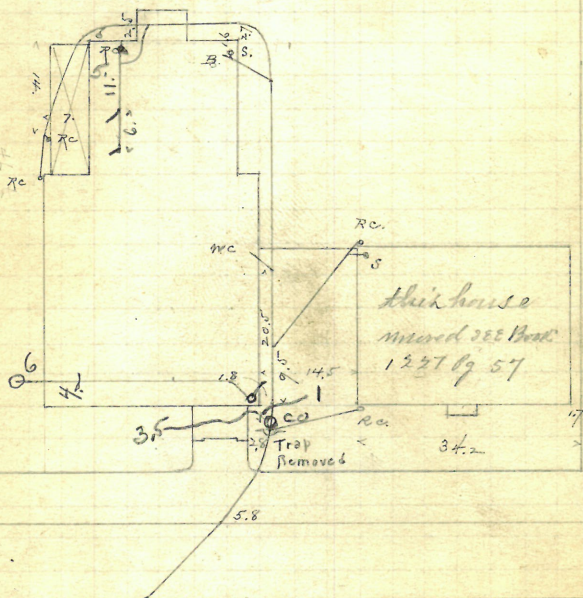
Rem trap G Mulvaney Plotted G Mulvaney D.L.

6" holes.

Cut at cuts, 10.

Reopened Jan 23 1948 7/25

Closed Apr 23 1948

Enters sewer 77.7 ft. N. of  
2d. mch. of Common St.





64

P  $\frac{161}{54}$ 

Nov 10. / 9.

Mamie Bower

John Krough Dr 104 Julian St  
8th Cor. Anshut St

Permit 6421

Opened Nov 11. 1891

Closed

Reopened Sept. 7-1915 cut at cut 9-97

Closed

7-1915 Pipes 5~

W. A. Walsh D. Co.

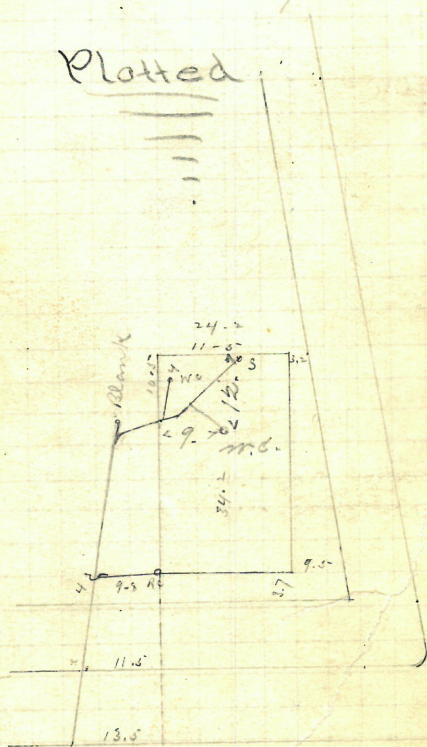
Reopened Oct. 15-1915

Closed

W. A. Walsh D. Co.

Delay no change

Plotted



Julian St

Entered River 172-1 North of  
2nd m h South of Anshut St R. Dec. 17. 191



Removed

✓ Nov. 10/91. 65

Constant S. Horton

49-51 ~~25-27~~ Jefferson St.  
J. A. Blackman, D.L. Permit # 6422.

Opened Nov. 13, 1891.

Closed " 18, "

Reopened May 31, 1940

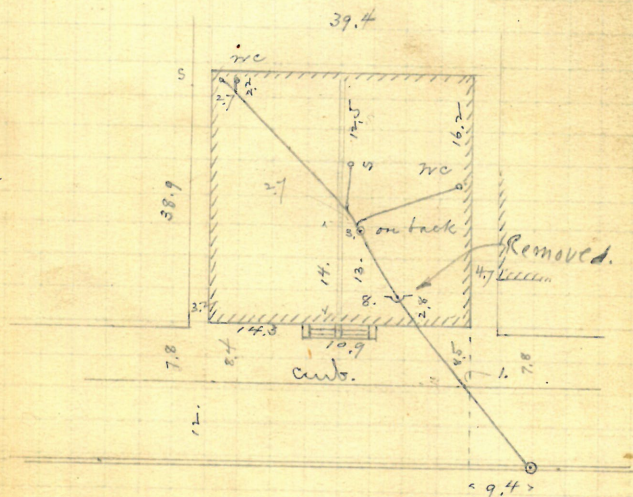
Closed May 31, 1940

R. A. Keyes - Clear

Removed trap.

6" pipes.  
Cut at curb, 10.5

Plotted.



Enters sewer at 2 m.h.  
W. of Liberty St.

R. Jan. 16/92



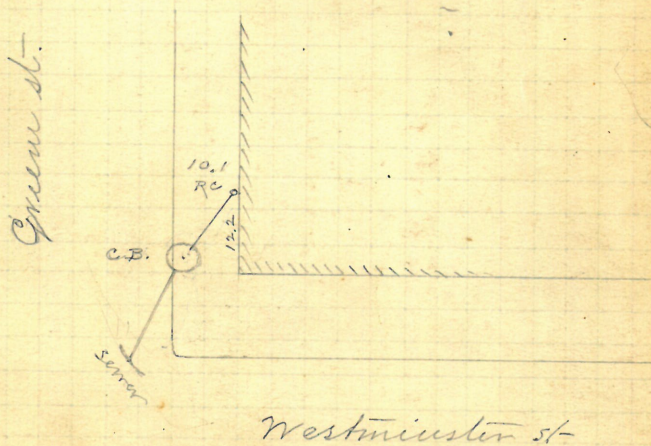


✓ Nov-11/91.

Julia P. A. Anthony,  
 #347? Westminster St.,  
 N. cor. Greene.  
 John W. Briggs, S.L. Permit # 6424.

Nov. 21, 1891. - I understand this  
 work has been done, although Mr. Briggs  
 has not called for the permit; but  
 it was without notice to me, and I know  
 nothing about it. - C.H.P.  
 Feb.

Plotted.



R. Feb. 9/92

Enters catch-basin at corner, by  
 special permission.

Nov: 11/95

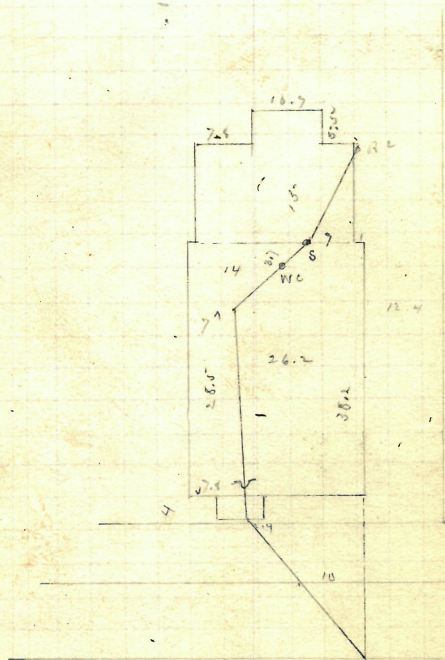
Wm. S. Kerk, 31 Dartmouth ave.  
J. A. Blackman, D.C. Permit # 6425.

Opened Nov 12 1891

Closed Nov 13. 1891

cut at cut 10-1  
Pipes 6~

Plotted.



Dartmouth Ave

Entered Senior 93. 2 Week of 4<sup>th</sup>  
in the Week of Broad St. R Jan 14. 92



GONE

✓✓

Nov. 12/91. 69

Thomas McAvoy  
# 863-865  
Patrick Tierney St.

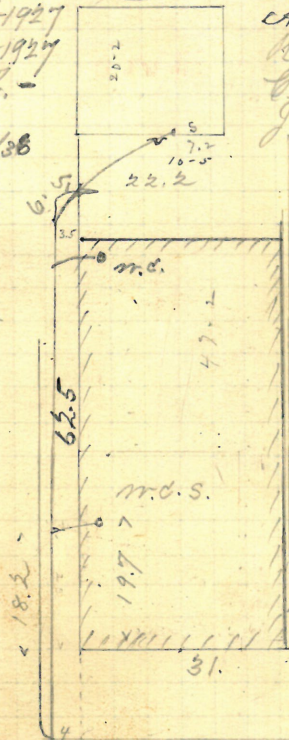
289 Howell's ave.  
McAvoy  
Permit # 6426.

Opened Nov 13 1891  
Closed 19. 1891  
Reopened Aug. 5-1904  
Closed " 26-1904  
J. Aiello D. L. - Relay -  
Reopened Mch. 16-1927  
Closed " 17-1927  
J. Batri D. L. -

cut at curb 10  
Pipes 5"  
Reopened Mch 9-1911  
Closed " 10-1911  
A. Aiello D. L. -  
Reopened Aug. 15-1922  
Closed " 16-1922  
J. Batri D. L. -

permt July 2/38  
return

McAvoy St



Plotted

Reopened May 21-1927  
Closed " 31-1927  
J. Batri D. L. -  
Clearance -  
Reopened ? 1945  
Closed ? 1945  
all within Mark @ Ross St

Atwell Ave

Intend Sign in atwell ave  
at m h at McAvoy St R. March 12, 192

70 ✓

Nov. 12/91

Dennis Conlon, 94 Julian St.  
 John Keogh, S.L.

Opened Nov. 13. 1891

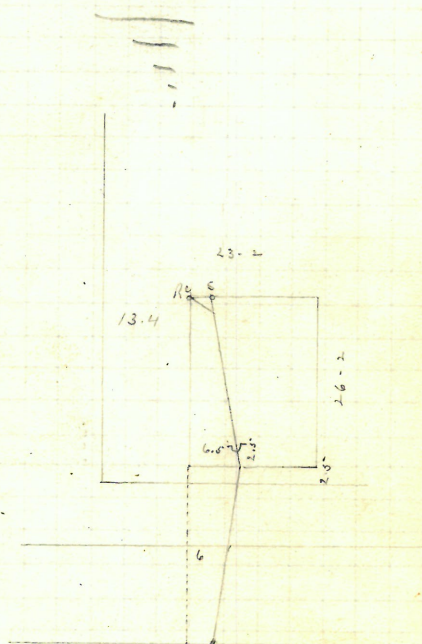
Cloud " 16. "

Permit # 6427

cut at amb 9-9.

Pipes 5"

Plotted



Julian St

Entered Survey 28-9 north of  
 2<sup>nd</sup> St South of Grand St R Dec 17. 1891





Mary R. Tibbels, 28 George St.  
P. O'Connor, Dr.

Extension of No. 37,  
which has no recorded diagram.

Reopened Sept. 25-91

Closed Oct-9-91 }

Reopened Sept. 5<sup>th</sup>

closed 11 649

Reopened Oct. 25-1

Closed

C. Bernardinelli.

3/ Reopened - Mar. 24, 1931

2<sup>nd</sup> Closed - Mar. 30, 1938  
M M C H H A L

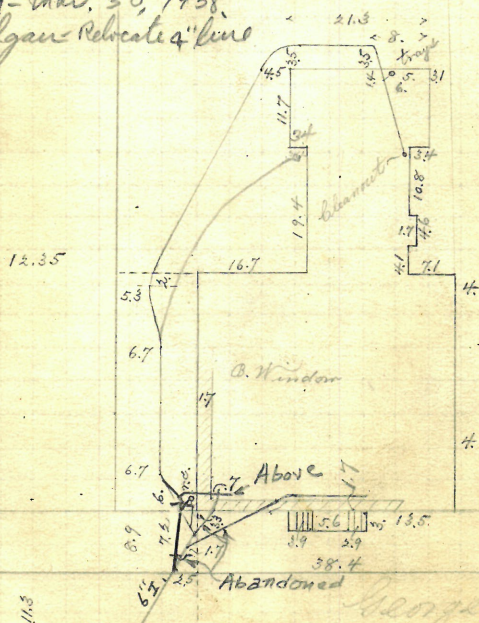
M. McNally - Clear - Root  
Ph. It. - Red - Root

ap. St. V. Paul. - Kellogg 68  
Re-labeled Mar 30, 1938

3/ Reopened - Mar. 30 1938  
29 Closed - Mar 30 1938

77 Closed - Mar. 30, 1938.  
J. B. Colgan - Relocate 2" li

Phil. Morgan, Naturalist & Co.



Entered <sup>102.1</sup> <sup>20.25</sup> <sup>10.21</sup> East of the 3rd  
man hole East of Benefit Street



P. -  $\frac{158}{33}$

✓ Nov. 12/91. 73

Livermore P. Hopkins,

249 Wesleyan ave.

J. Frank Read, D.L.

Permit # 6429.

Opened Nov. 13, 1891

closed " 16. "

30 Reopened July 30, 1935

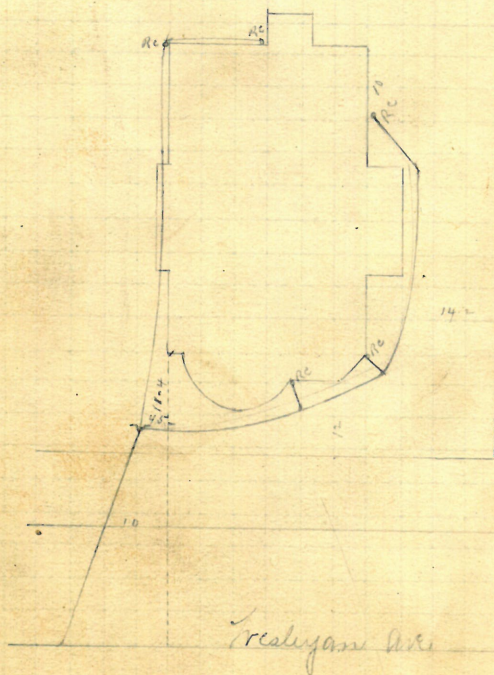
closed July 30, 1935

M. W. Lyons - Clear.

cut at curb 10-4

Pipes 5"

Plotted.



Entered Sewer 59.4 West of  
2nd St. N. West of Taylor St.

R Dec 17, 1891

Nov-14

City of Providence  
95-108? Manual Training School,  
Pond St.

J. Frank Read, D.L.

Permit # 6430.

Opened Nov - 14. 1891

Dura 16

Proposed May 1904

Closed 11 1904

J. Deary D. L.

Repair - r.c. trapped -

Reopened Aug 15/

Closed " 12/33

J. F. Martin 29-1

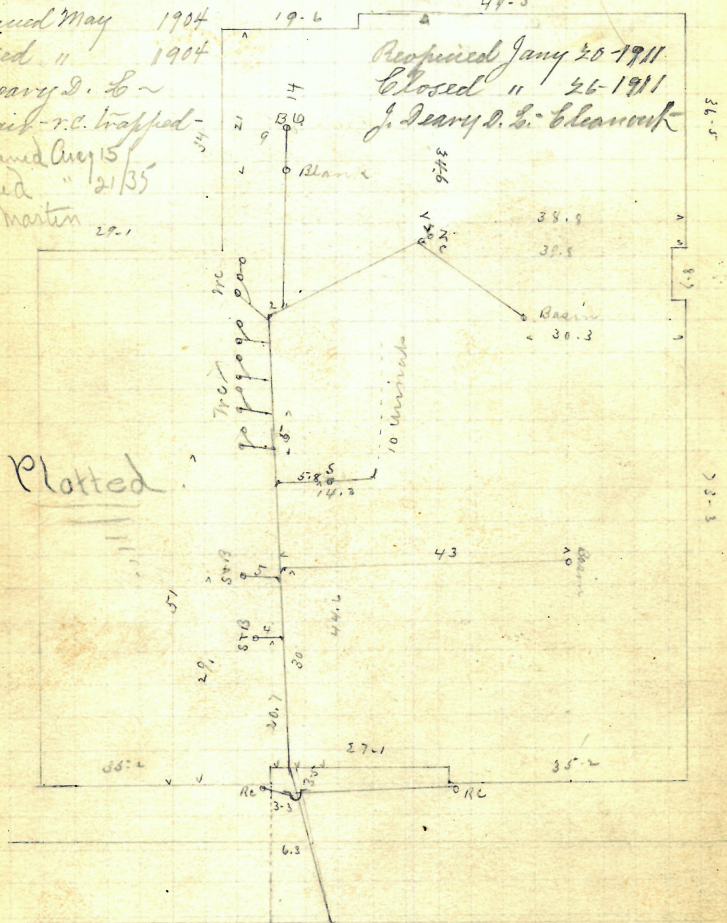
Pipes 6<sup>th</sup>

cut at emb 10-2

Received Jan'y 20-1881.

Closed " 26-1911

J. Deary D. L. Hancock



Entered June 70. 1. West of 2nd mch  
West of Stewart St

Feb 17. 1899



✓ Nov-14/91. 75

City of Providence,  
185-193 Manual Training School,  
Pond str.

J. Frank Read, D.L.

Permit # 6431.

Opened Nov 16. 1891.

closed " 17. "

cut at cut 10-2

Pipes 6"

Reopened no date

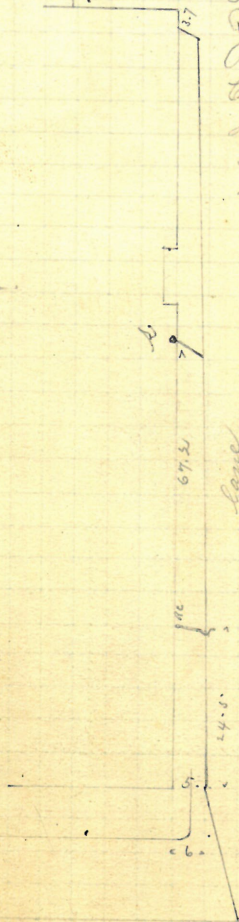
Closed " "

Shot Phillips & Co. D.L.

Date of Permit Aug. 6. 1892

returned to Engineer July 10. 1893

Plotted.



Entered Survey 6.7. 1. Work of 2nd  
in h. Work of Stewart Str

R Dec 17. 91

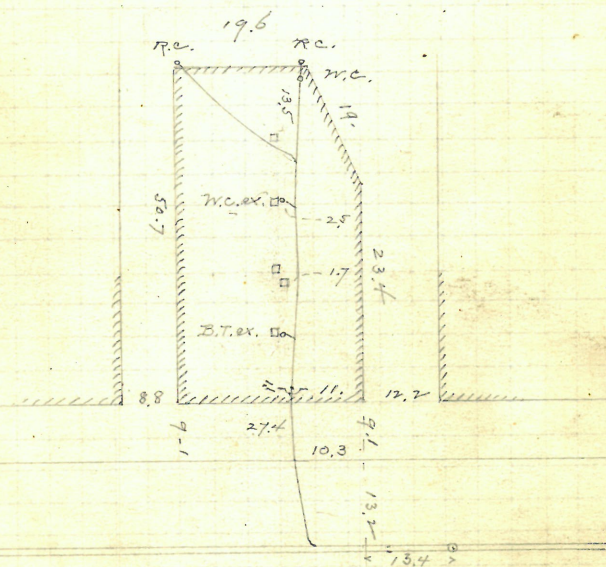
76

Removed

Nov. 16/91

Thomas H. Stratton + wife.  
 257 Eddy St.  
 J. Frank Read, D.L. Permit # 6432  
 Opened Nov. 16, 1891.  
 Cloud " 17, " 5" pipes.  
 cut at curb, 5.9.

Plotted.



Enters sewer 19.4 ft. S. of  
 4th m.h. S. of Clifford St.

R Dec 15/91.



77  
Nov. 16/91.

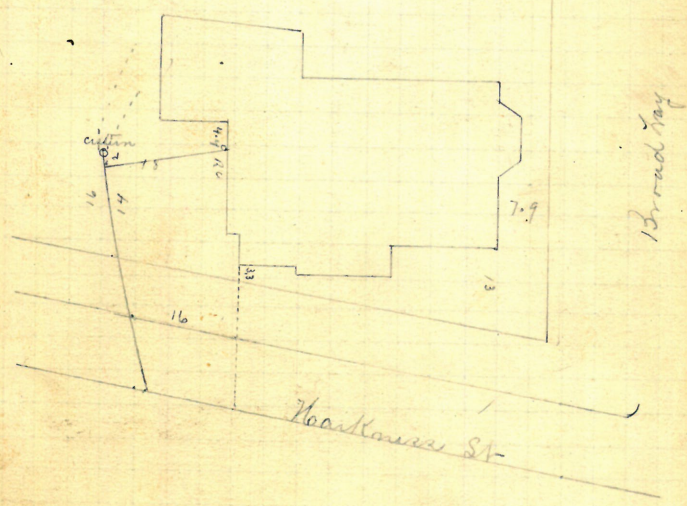
James A. Simmons,  
46? Hartness Dr.,  
S.W. Cor. (242) Broadway.  
J. Frank Read, D.L.

Permit #6433.

Opened Nov 18. 1891  
closed " 19. "  
Resealed Dec. 19-1906  
Closed " 20-1906  
L.R. Blackman & L. Blackman

cut at cut 10-7  
Pipes 5"

Plotted



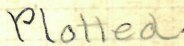
Entered River Co. South of  
M. L. at Broadway R. Dec 19. 1891

Nov. 14

Permit # 6434.

cut at curb 10

Pipra 5-



R Jan 28. /92



July 79  
14/92

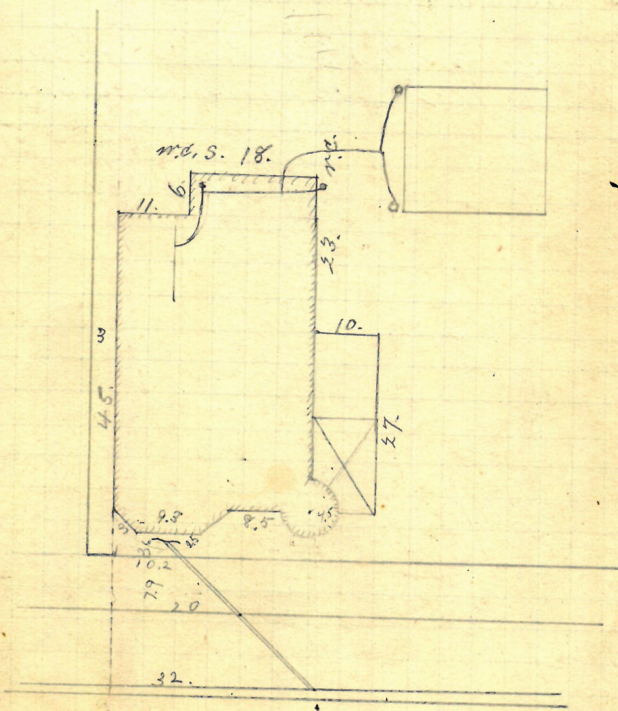
Walter Ward + wife Bainbridge ave  
56-58 x 57 ~~Baker ave~~  
Jason A. Blackman  
A.T.

Permit # 6435.

opened July 15/92  
closed " 16/92  
Reopened Oct. 2-1905  
closed " 3-1905  
J. C. Dunn D. L. -

cut out emb 9-7  
Pipes 5 in  
Reopened May 5-1917  
closed " 8-1917  
J. Leary D. L. -

Plotted.



Contined Survey 77-5 Dr of 2nd  
in h. tract of Litch St

Range 7. 192

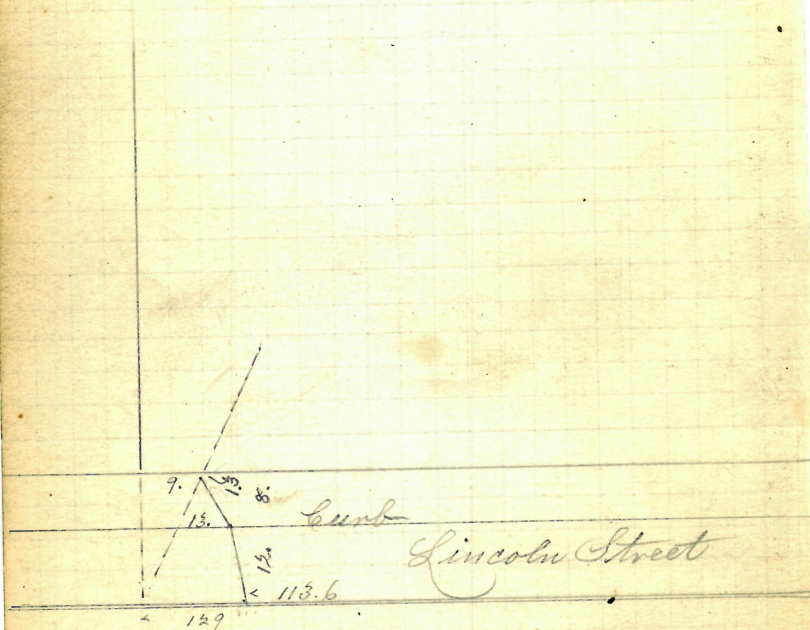
Nov. 17/91

Swedish Evangelical Lutheran  
Gloria Dei Church,  
Lincoln St.,  
Park St. sewer.

J. Frank Read, D.L. Permit # 6436.

Nov. 23 1891. - Mr. Chadsey informs me that this work was begun on the 20th inst. and finished on the 21st.; but it was done without any notice to me, and I know nothing about it. I have never even seen the permit. - C.H.P.

Reopened & closed July 18, 96 - Th. E. Sherman & S. L.  
It connects with stone drain into Park St.  
and connects with sewer in Lincoln St.



R. Dec. 15/91

Enters Park St. sewer through old stone drain in Lincoln St.



✓ Nov. 18/91

Albert L. Reynolds

96 Doyle Ave.

J. Frank Read, D.S.

Permit # 6437.

Opened Nov. 19, 1891.

Closed

26. "

6" pipes.

Reopened - June 10, 1935

Closed - June 12, 1935

W. B. Gammon - Add R.C.'s

OPENED 6/27/74

CLOSED 6/27/74

D. L. V. CAPPOLO

REMOVED TRAP

at curb at 91.

12 Reopened - Dec. 11, 1936

11 Closed - Dec. 11, 1936

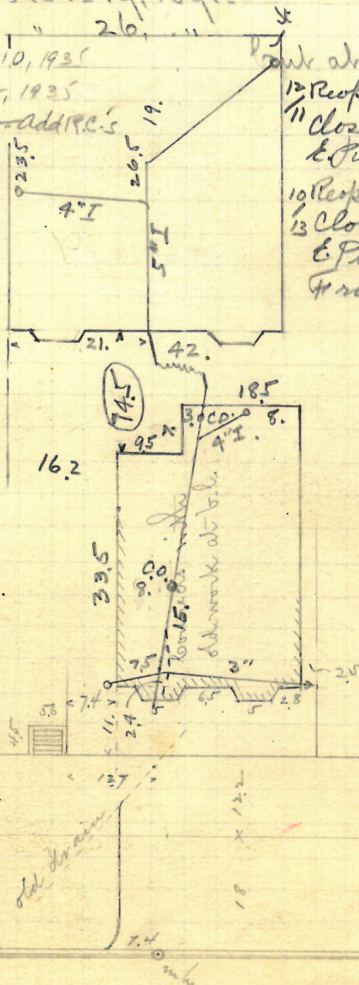
E. Purnell - Relay House

10 Reopened - Oct 13, 1937

13 Closed - Oct 14, 1937

E. Purnell - Rerun I.

Front House.



Enters sewer 179.2 ft. E.  
 of 1st. int. E. of Doyle Ave.  
 (No trap at 181.2)

R. Feb. 8/92  
 Camp st.







II

Nov-19/9

Stephen Mathewson,  
1492-5 Westminster St. 786 High St.  
J. A. Blackmar, D.L. Permit # 6440

Opened Nov 24 / 89

Cloud " 27. 1891

Reopened - Jan 17, 1933

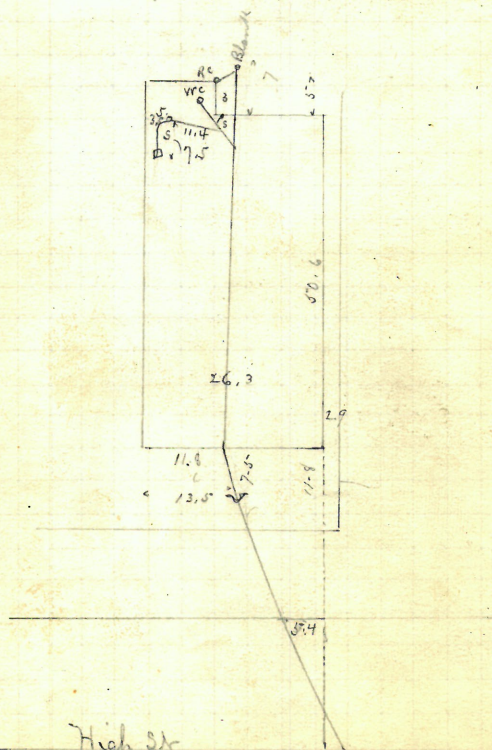
Closed - Jan. 18, 1933

P. Lapierre & add. S. S. trop

Permit # 6440.

cut at cut 10.8

Pipes 6 m



High Str  
Entered Server 40 East of  
12<sup>th</sup> m<sup>th</sup> East of Tobay St R/cn 12/92



Leander M. Walling.  
John Keogh, D.L. 142 ~~110~~ Doyle ave.  
Permit # 6441.

Opened Nov. 20, 1891.

Closed

Reopened - June 19, 1933 <sup>25</sup>

Closed June 19, 1933

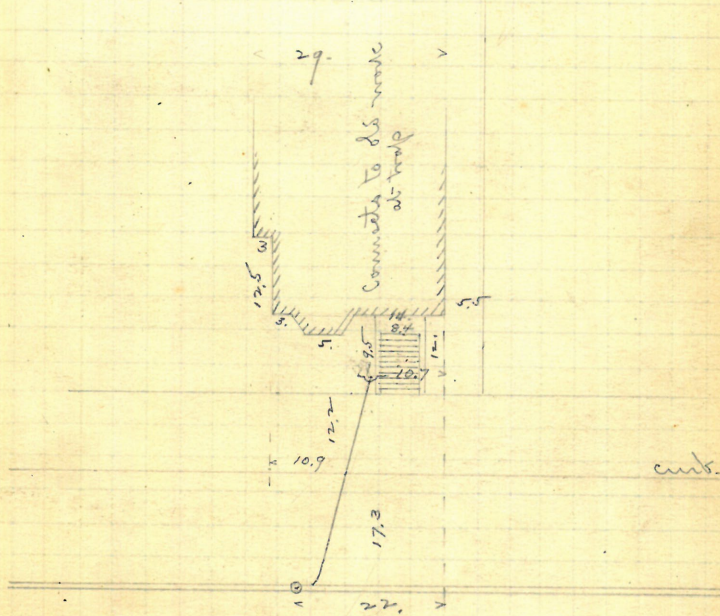
U. Cunningham - of Suclar

Received - Sept. 19, 1940

Closed - Sept. 19, 1940

R. Grotta - Clear

5" pipes  
Cut at curb, 19.3,  
as reported by "Frank"



Enters sewer 2.7 ft. E. of centre  
of 3d. m.d. E. of Camp st.

R. Dec. 7/91.





87  
Nov-19/91.

Sarah Sullivan.

B. Brady, D.L.

109 Vinton st.

Permit #6443.

Opened Nov 27 1891

closed " 28 1891

Reopened Oct 6-1908

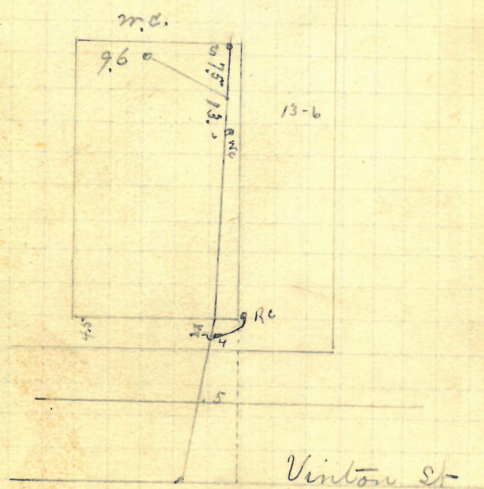
closed " 7-1908

J. Phillips D. L. ~

cut at curb 10

Pipes 3"-

Plotted.



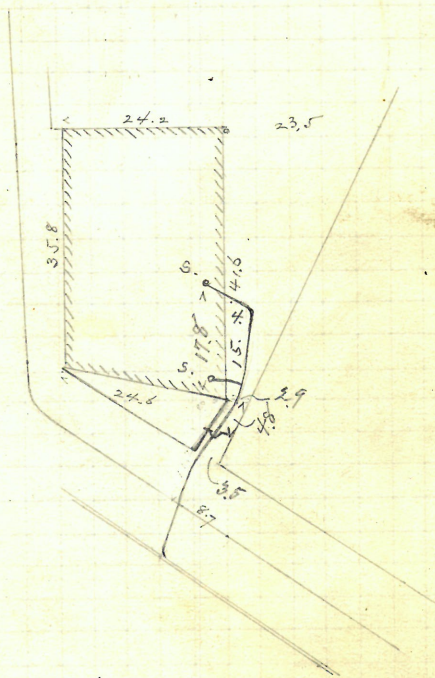
Entered Survey 25-4 South  
of 1st m h South of 5th St

R Jan 7. 1892

Nov. 2

Mary Gillen, 51 W. River st.  
 J. A. Blackman, D.S. Permit # 6444.  
 Opened Nov. 20, 1891.  
 Closed " 21, " 5" pipes.  
 Reopened & closed May 6, 1901. Curb at curb 10. as reported.  
 Wm. Condry D.S.

Plotted:



Enters sewer 49.3 ft. N. of  
 6th m. N. of Charles st.

R. Jan 16 / 91



REMOVED

89  
Nov. 20/91

Wanton R. Vassard  
126 bodding

B. Brady, D.L. NE for Tighman St  
Permit #6445.

Opened Nov 21

Cloud " 24.

Reopened Dec. 9-1901

Closed " 14-1901

M. H. Audrend D.L.

cut at cut 10.7

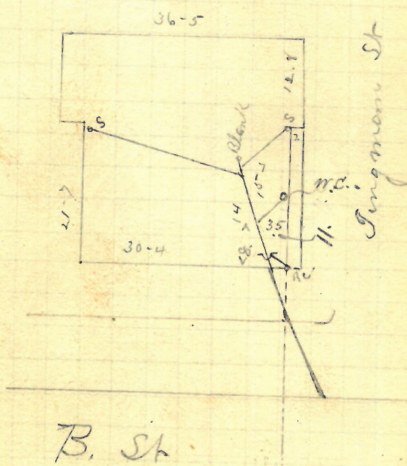
Pipes 5"

Reopened Oct. 31-1922

Closed " 31-1922

G. H. Lewis D.L. - Cleared

Plotted.



Entered Survey 19-3 north of  
3rd m h north of Central St R Jan 7, 1892





Removed

91  
Nov 23/91

Mary Martin

234-236

~~224~~ Willard ave.

B. Brady & Co.

Permit #6447.

Opened Nov. 24, 1891.

Closed " 25 " "

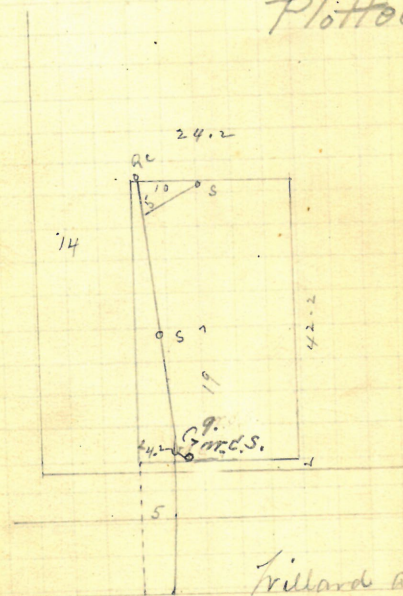
Reopened Jan'y 11-1916

Closed " 11-1916

M. Rotman & Co. -

cut at curb 10.  
Pipes 5"

Plotted



Enters sewer 20.4 ft. W. of  
dr. mtr. W. of Hilton st.

R Jan 7, 1892

Nov. 2

William Dalton  
 B. Brady, D.L.

#-10 Howard ave.

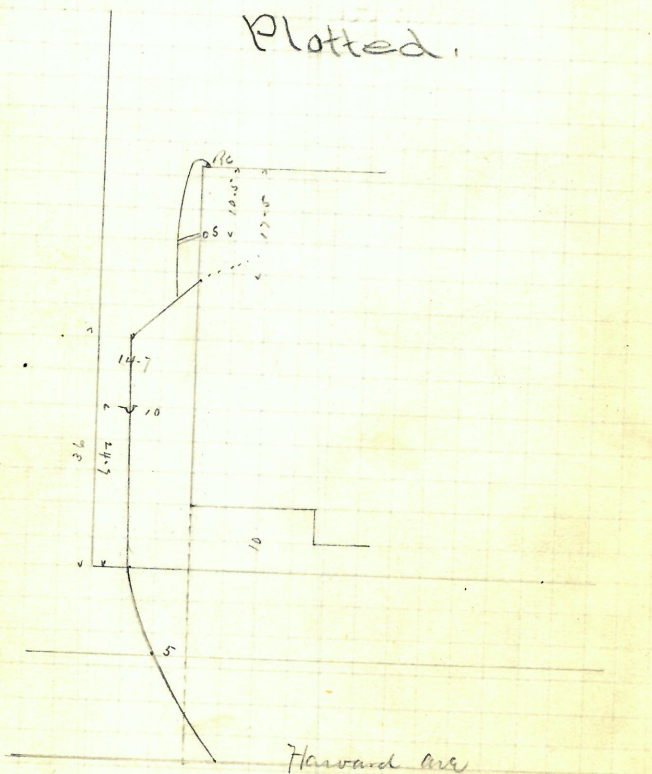
Permit # 6448.

Opened Nov 1st 1891

closed 4. 1892

cut at curb 10-2  
 Pipes 5"

Plotted.



Entered Since 19-3 north of  
 4th m to north of Taylor St R Jan 7, 1892



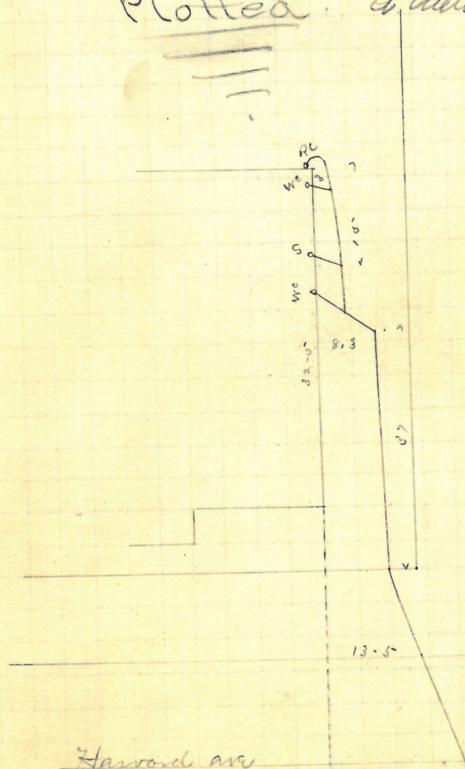
93  
Nov. 23/91.

Barbara Walton  
39+12 Harvard ave.  
B. Brady D.L. Permit # 6449.

Opened Nov 2 1891  
closed " 4. 1891 cut at curb 10-4

Pipes 3"-  
Reopened April 18, 1928  
closed 1928  
G. Wells & L. E. Charnett

Plotted



Harvard ave

Entered Sewer 82-5 north of  
3rd on E north of Taylor St

Reopen 7, 1928

Nov. 2

Francis box S.E. cor. of  
 #102 Plain + Lockwood St.  
 B. Brady, D.L.

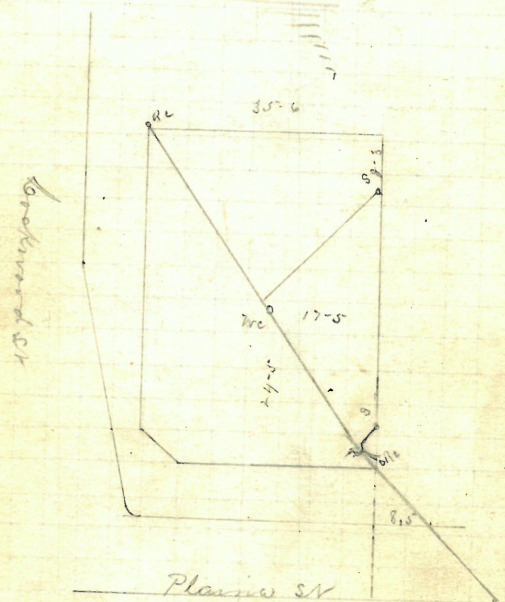
Permit # 6450.

opened nov 25 1891

closed " 27. "

cut at curb 10-9  
 Pipes 5"

Plotted



Entered sewer 115' north  
 of 2nd N. h. South of Lockwood St

B. Brady, D.L.









E. Th. Smith

20-22 Olney St. cor Cleburne

digged Oct 2/29

bleed

Drury St. clear

**All Removed**

Reopened April 24. 1933

Closed April 25. 1933

Ignorance open till clear

Reopened July 7. 1933

Closed July 7. 1933

T. A. Parsons clear

Reopened - Apr 12. 1934

Closed - Apr 16. 1934

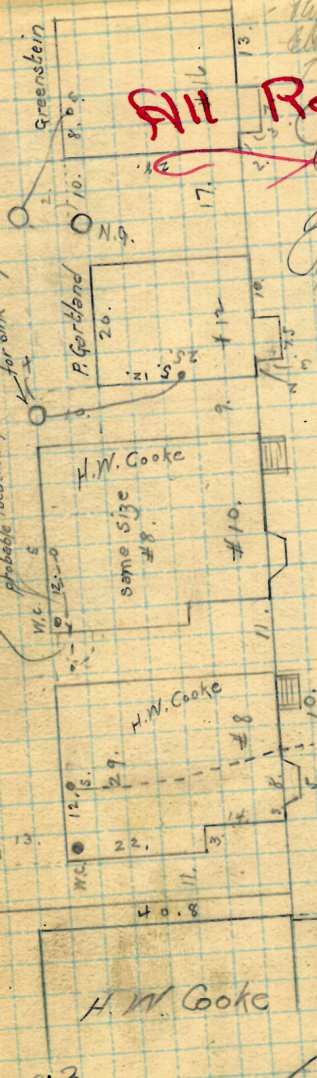
T. Clark - clean up yard S.

Barn  
No Drains

floor and walls  
broken up indicating  
probable location of drain

for sink only.

abandoned



Cleburne St.

Barn  
No Drainage  
Mayer.

783  
96

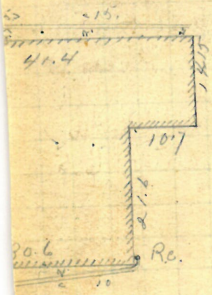
Olney St.

Page 97  
Nov. 25/91

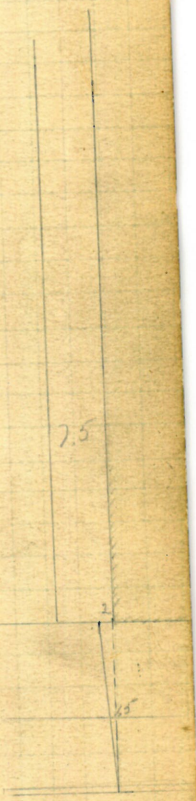
Lat. of Providence  
95-1030 Pond str.

Permit # 6453.  
J. W. Read. D. L.  
Cut at crib 10-2  
Refer to

page 97  
Opened Nov. 26 1891  
Closed Nov. 28 1891



Plotted



Entered Survey 25-1 north  
2nd mile north of Stewart for N. 25-17.

19.



Nov. 27/91

Dyer St. Land Co.  
E. cor. Friendship.  
Orange St.

J. Frank Read, D.L.

Permit # 6454.

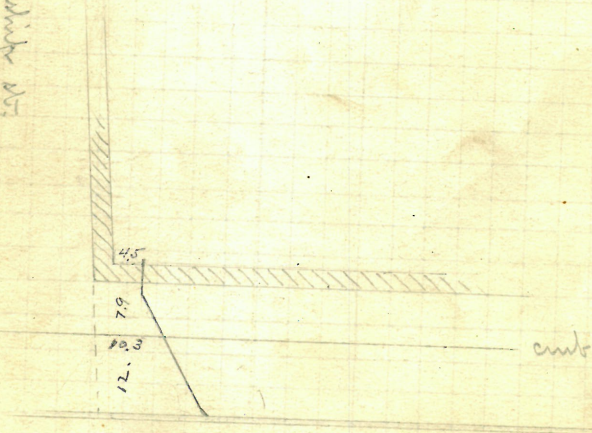
Opened Dec 2, 1891, without notice.

Closed " 4, "

6" / in.  
Cut at curb; 6.5

Plotted

Friendship St.



Enters sewer 30.9 ft. N. of  
1st. mth. S. of Friendship St.

R. Dec. 11/91





100 ✓

GONE <sup>46(3.)</sup>

Nov. 27/91

James N. Carleton, + wife,  
 #86 ~~42~~ Jefferson st.  
 Thos. Phillips Co. D.C.

Opened Nov. 28, 1891. Permit # 6456.

Closed Dec. 2 " (in str.) 6 pipes

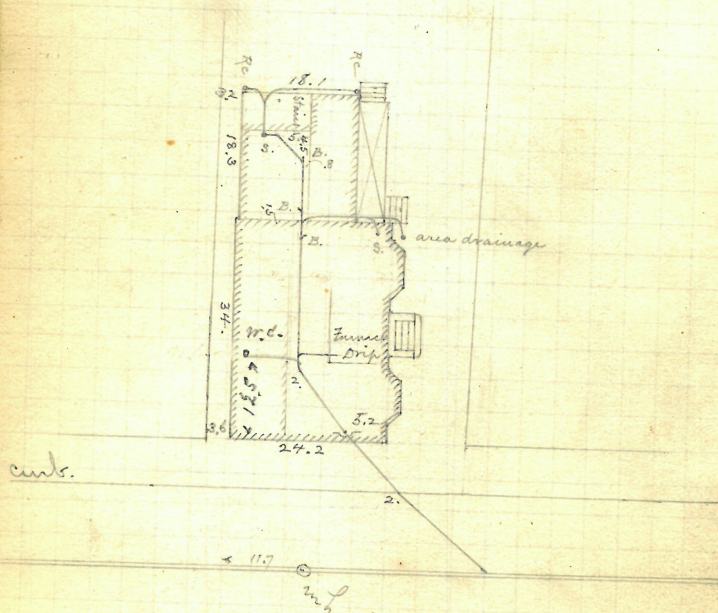
" " 12 " Cut at curb, 10.1

Reopened June 16 + 1911

Closed " 17-1911

F. Dupont D. C.

Plotted



Enters sewer 81 ft. S. of  
 m. Th. at Orms st.

R. Dec. 15/91

101  
Dec. 2/91

Arthur A. Simmons,  
Wm. Spencer, Trustee.  
4-78 Pine St., E. cor. Linden.

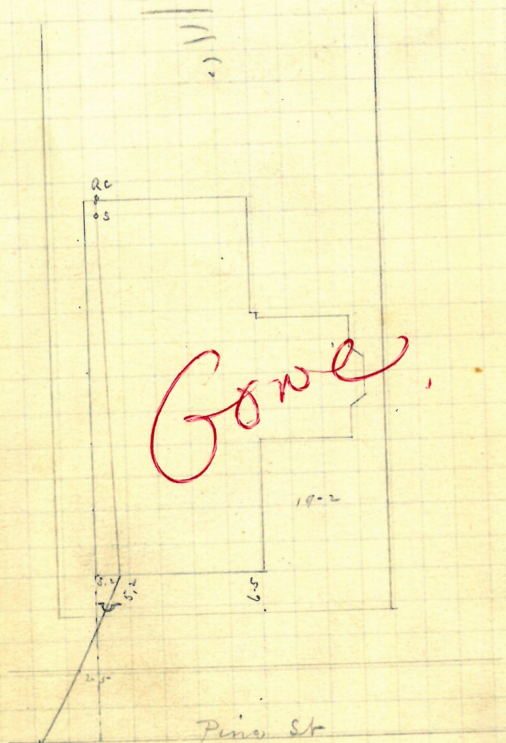
J. Frank Read, Jr.

Permit # 6457.

Almond Dec 1st 1891  
cloud " 4.

cut at curb 10-9  
Pipes 5"

Plotted.



Entered Survey 128- Wash of R. Jan 7/92  
1/2 mi W of Sumner St

Copy made from 1100  
J. Frank Read, Jr. S. S. Kelley





Dec. 2/91.

80 Burnett st.

Permit # 6459.

ent at ent 11.4  
Pipes 6.2

Pileus 6.25

clean out

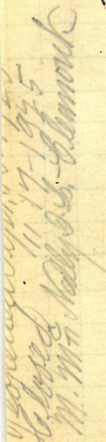
clean out

T. F. Lyons D. L.

11. Reopened - Nov. 14, 1939

13 closed - (Nov. 17, 1939)  
80 m. l. 21 chrs.

A. Berardinelli Cl. Robb.



Entered River 99.4 East of  
Mk at Bucklin St 7 Jan 7. 192



Dec. 3/91

Samuel D. Turner,

28

22 Pleasant St.

B. Brady, D.L.

Opened Dec. 4, 1891.

Closed

Reopened Mch. 9-1900

Closed " 12-1900

J. C. Conroy D.L.

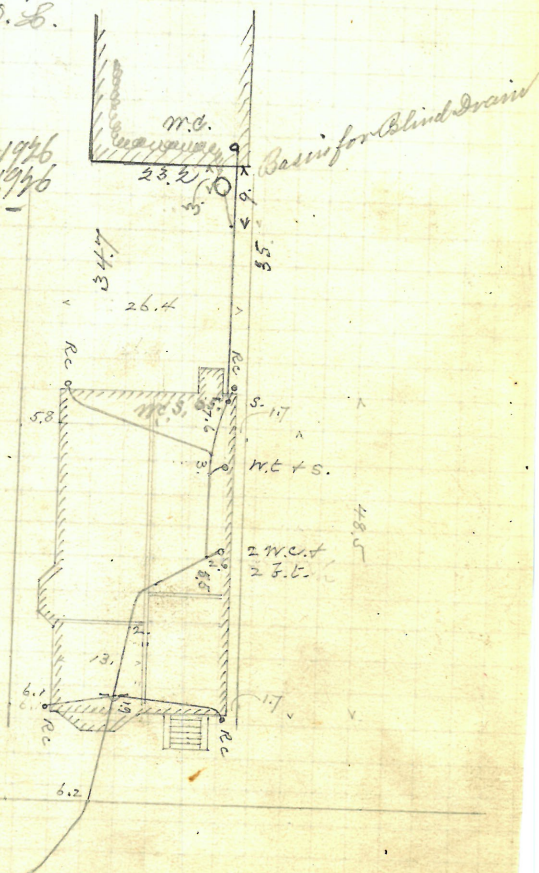
Plotted

Reopened May 12-1946

Closed " 19-1946

W. J. Conn D.L.

Permit # 6460.

5" pipes.  
Cut at curb, 8.2

Enters sewer 186.5 ft. E. of  
1st. m.n. E. of N. Main st.

P. Jan. 11/92





P-  $\frac{158}{34}$ 

Dec. 3/91.

Margaret M. Byron, et al.  
 J. A. Blackman, etc. 76 Wesleyan ave  
 96 -

Permit # 6462.

Opened Dec 14 1891

closed " 17. 1891

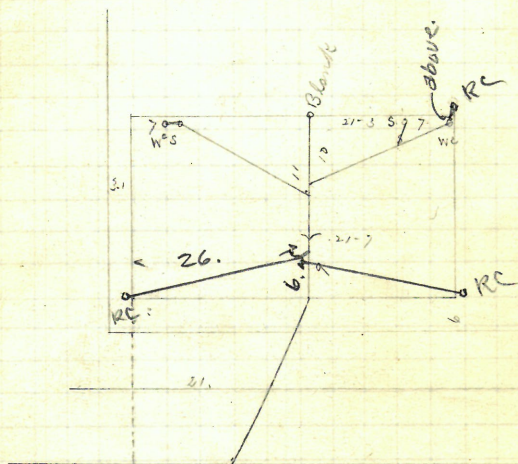
Reopened June 3, 1936

closed June 3, 1936

J. Capelli - 3 R.C.'s

cut at curb 9.7

Pipes 6"

Plotted

Entered Sewer at 3<sup>rd</sup>  
 N. E. of Broad St

R Jan 12/92

Patrick Thannor,

J. Frank Read, D.L.

2 Lyden St.

S. McCoy #128. Tinton

Permit #6463.

Opened Dec 12. 1891

Closed " 15. 1891

Reopened Nov. 13-1908

by Ch. Piccetti D. L. - Dis -

Reopened Aug. 17-1910

Closed " 17-1910

G. Piccetti D. L. -

Culvert emb 10-3

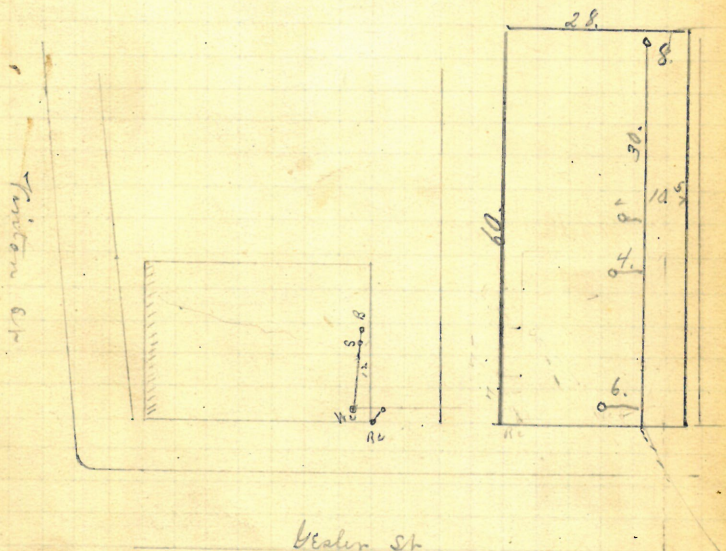
5

Reopened Sept 2/30

Closed

G. Piccetti D. L.

Plotted



Entered Survey 56-3, East of  
2nd N h West of Tinton St

R Jan 6. 192



108 ✓

690-696 Westminster St.

**REMOVED** Dec. 4/91.

Byron T. Potter, et. al.

~~# 210 218 High St.~~

J. Frank Read, D.L.

Permit # 6464.

Opened Dec 6, 1891

Closed Dec. 11, 1891.

cut at curb 4.2

Reopened Sept. 15-1893

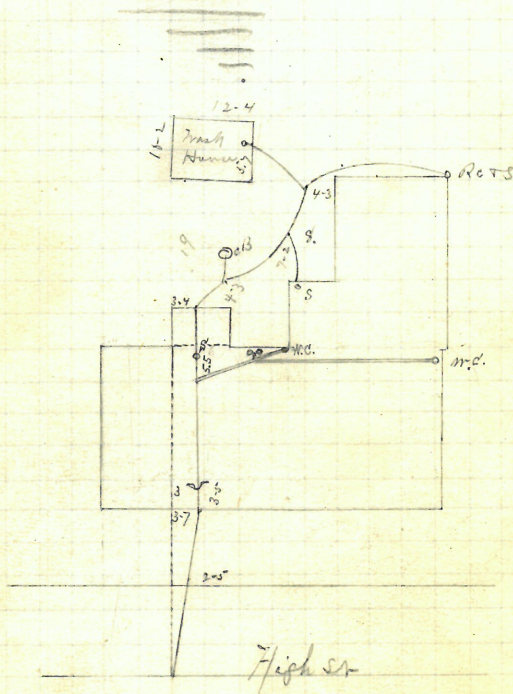
Pipes 6

Closed Sept. 15-1893

Henry R. Chadsey, II, L.

Reopened & closed Nov. 7-1900 - J. Deary S. L.

Plotted



Entered Sewer 15-6 West of 1st  
in West of Stewart St

R Jan 8. / 92







✓ Dec. 5/91. 111

Amos L. Barton.

P. Tierney, D.L.

100 Waybasset St.

Permit # 6467.

Opened Dec. 5, 1891.

Closed " 10, "

Reopened Aug. 28, 97

Closed " 30, 97

E. C. Stevenson D. L.

Reopened 1924

Closed Aug. 12, 1924

H. E. Bryant D. L.

Cut and exact location at curb, not recorded.

Reopened Jan. 30, 1918

Closed " 31, 1918

E. S. Weinger D. L.

New Side Valve -

Reopened 1924

Closed Nov. 13, 1924

H. E. Bryant D. L.

Reopened Sept. 27, 1925

Closed 1928

Hennsey D. L. Glan

Closed:

La Placemint

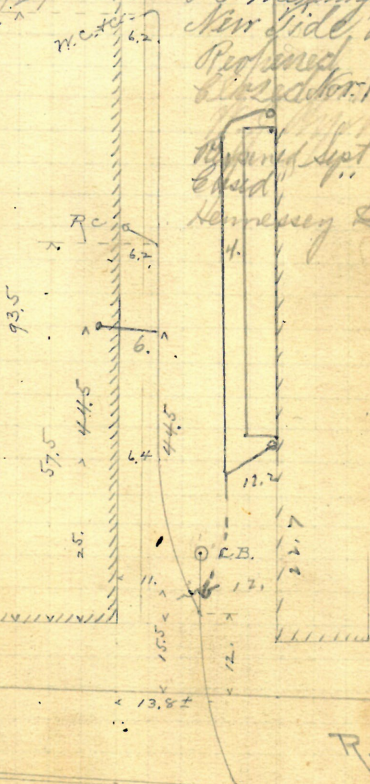
Drain No. 24

Sheet No. 96

Reopened Oct 3/28

Closed

Hennsey D. L.



Dorrance St.

R. Jan 11/92

Enter sewer 12.7 ft. E. of 1st m. h. E. of S. Dorance St. Previously laid without record from sewer to c-basin.





Removed

V - Dec. 8/91. 113

Amasa S. Westcott,

John Keogh, D.L. 15 7 Jefferson St.

Opened Dec. 8, 1891.

Permit # 6469

Closed " 9 " (in dr.)

" " 12 "

Reopened Nov. 9-1905

5" pipes  
Cut at curb, 10. ft.

Closed " 11-1905

E.R. Blackman & Co. Cleaners

Reopened Apr. 8-1901

Reopened Dec. 21-1901

Closed " 13-1901

Closed " 24-1901

E. H. Lyons D.L.

M. Heran D.L.

34.4

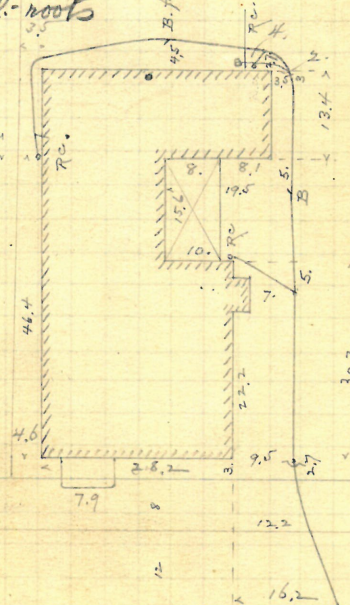
Cleanout

Reopened Mar. 6, 1909

Closed Mar. 6, 1909

R. Murgione - Cl. roots

Plotted



98.7  
Enters sewer 104.7 ft. N. of the 1st. wh.  
N. of Smith St.



114 ✓

158

P. 23

REMOVED

Dec 10/91

Est. Benj. M. Hubbard

16 Knight St

Daniel Holmes &amp; Co

Permit 6470

Opened Jan 11, 191

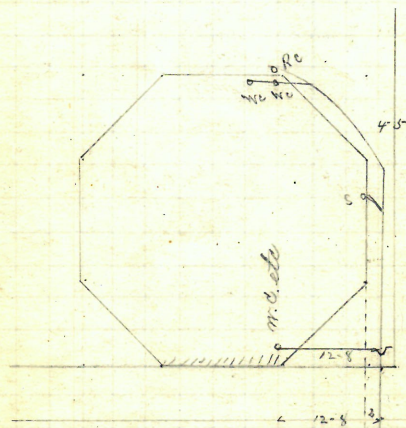
Closed " 13, 191

cut at cut 9

Pipes 5'

Reopened &amp; closed Oct. 13, 1917 - D. Holmes &amp; Co. S. L.

Plotted.



Knight St.

Entered Survey 19-7 West of 2nd  
 in the block of Cranston Exp. R Jan 14, 191

GONE

115  
Dec. 10/91.

Alice A. Beverly

2213 Barclay St.

J. Frank Read, D.L.

Permit # 6471.

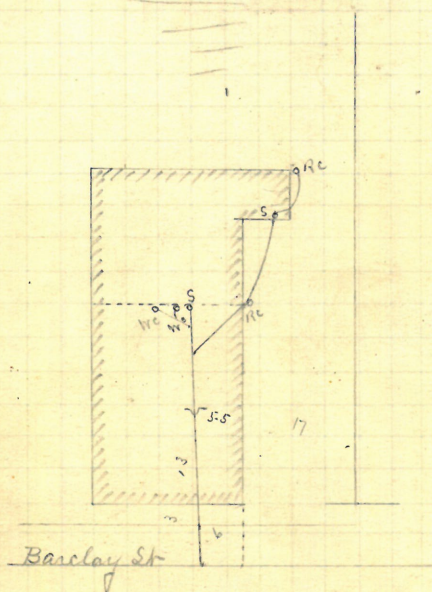
Opened Dec 14. 1891.

closed " 16. "

cut ab cut 10 -

Pipes 5 -

Plotted



Entered Sewer 53-6 north of Ref amb/92  
2nd M h north of Federal St



REMOVED

Dec. 10/90

Edwin H. Maldron,

392-394

21 Knight St.

P. Brady, W.L.

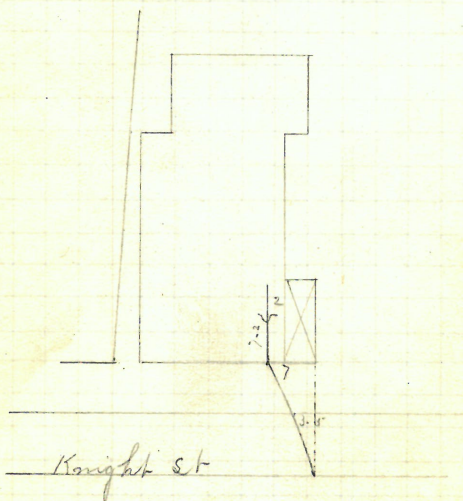
Permit # 6472.

Opened Dec 11, 1891

Closed .. 12, 1891

cut at curb 9-9

Pipes 6"

Plotted

Entered Survey 37-9 West of 2nd

in E West of Cranston St

Remarche Dec. 1894

REMOVED

✓ Dec. 107 117  
91.

Edwin M. Waldron

#22 Perkins St.  
N.E. cor. A. St.

Rebrady, D.L.

Permit # 6473.

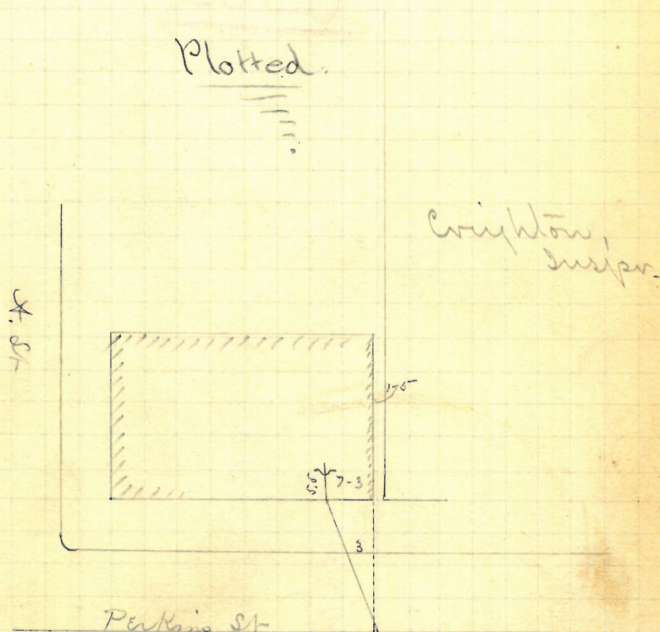
opened Dec 11, 1891

closed " 13. "

cut at curb 10-

Pipes 5"

Plotted.



Entered sewer 74 ft. below  
and 1 mi. east of A. St.

Jan 8, 192



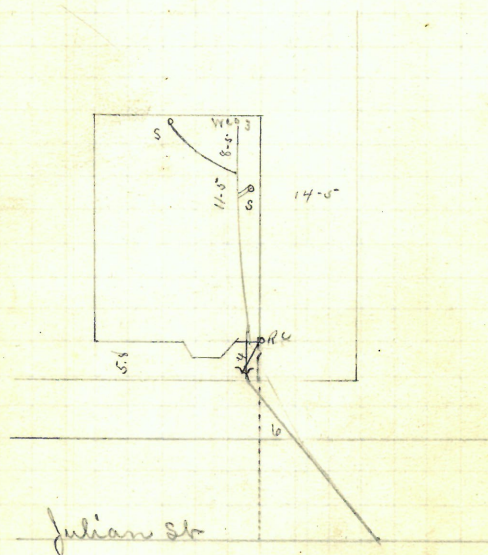
Dec. 11  
91

Maurice Powers + wife  
 #128  
 John Keogh, D.L.  
 75 Julian St.

Permit # 6474.

Opened Dec 13. 1891  
 closed .. 16. "

cut at cut 9.5  
 Pipes 5"

Plotted

Entered Sewer 10.5 North of R Jan 28. 92  
 5<sup>th</sup> m h North of Kassuth St

Removed

119  
Dec. 12/91

John + Margaret Dolan  
82 to Robinson St.  
B. Brady, D.L.

Permit # 6475.

Opened Dec 13, 1891

closed " 16. 1891 cut at curb 10-6

Reopened Nov. 9-1923

Piers 5--

closed " 9-1924

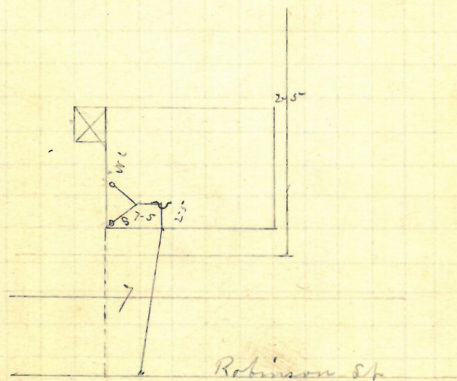
Reopened May- 1923

W. Doherty & L. Blamont

closed " 1923

J. J. Motter & L. Blamont

Plotted



Entered Survey 34.5 West of  
1st in h East of Prairie Ave

Ref Jan 8/92



Dec.

George F. Fotel + wife

520 No. Main St.

Patrick H. Cassidy, D.L.

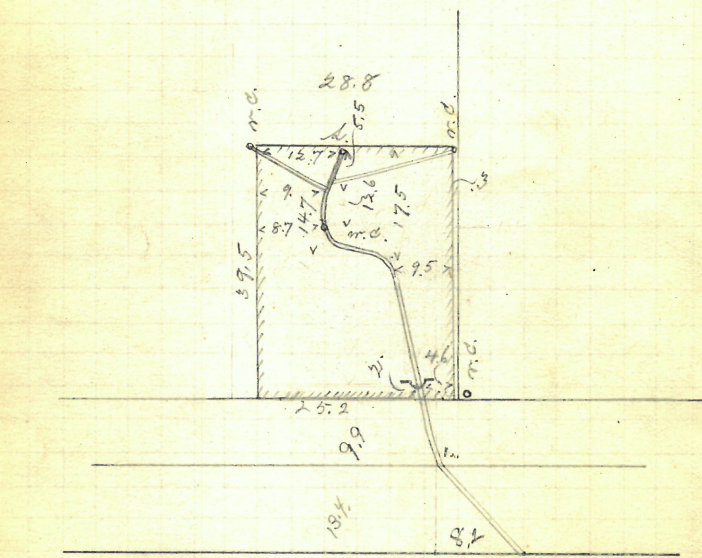
Reopened Aug. 21 97

Closed m 411 97

W. J. Hogg S. L.

Permit # 6476.

Plotted.



10 ft S of 1<sup>st</sup> mt. S of Circus S

R. Jan. 11/9

✓ 121  
Dec. 14  
91

John Lowrey,  
John Keogh, D.L. 90 Julian St.  
Permit # 6477.

Opened Dec 16 1891

Closed " 18 1891

Reopened May 26/38

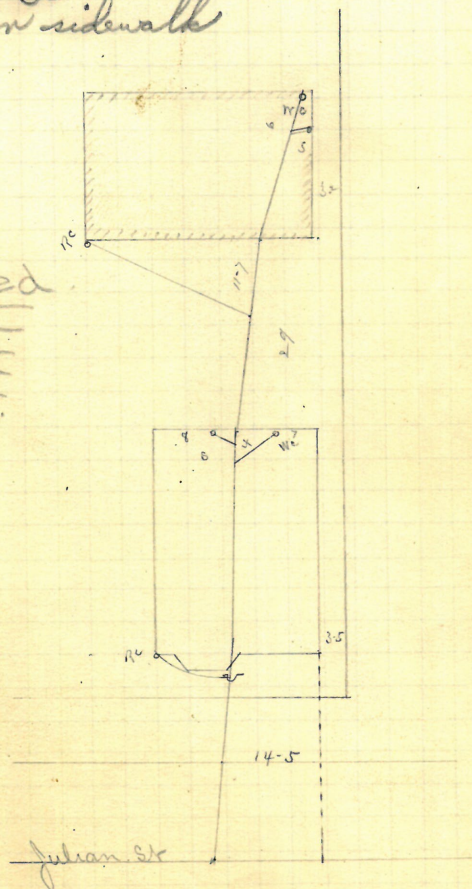
Closed May 26/38

Jean Catie  
Keep open sidewalk

cut at curb 9-5-

Pipes 5-

Plotted



Entered Survey 141.5 north of  
N h at Basenuth St

Ref Jan 28. 192



122 ✓

$$P = \frac{157}{13}$$

Dec 19/91

13  
Sophia Augusta Sherman,  
#188 Concord St.,

Thos. Phillips Co. B.C. N.W. cor. of Genette  
Permit # 6478.

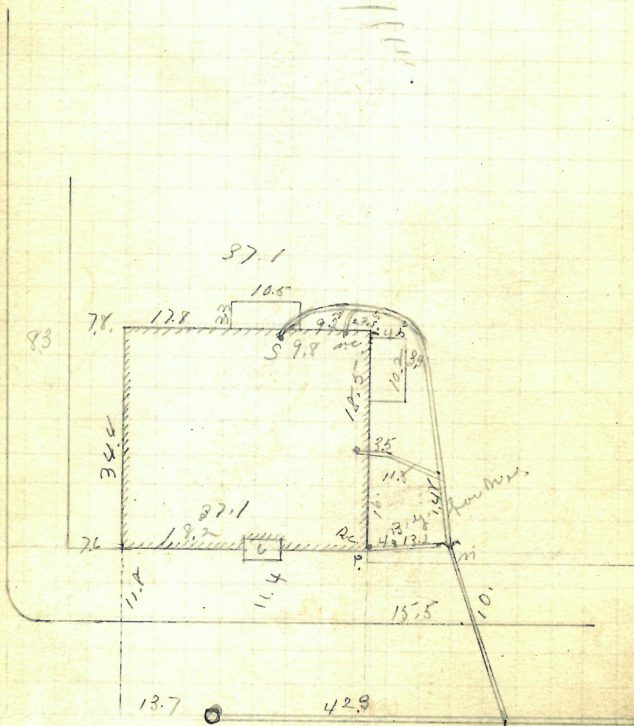
Reopened by T. Phillips & Co.  
Closed in April, '93.  
Reopened Aug 7/28

Reopened Aug 7/28

Chsd 7 8/28

F. Dupuis LL

Plotted



Enters river 157.7 ft. S. of 2 m.h.  
S. of Haley st.

GONE

✓✓ 123  
Dec 24, 191

S. T. B. Leedner

#66 Stewart St

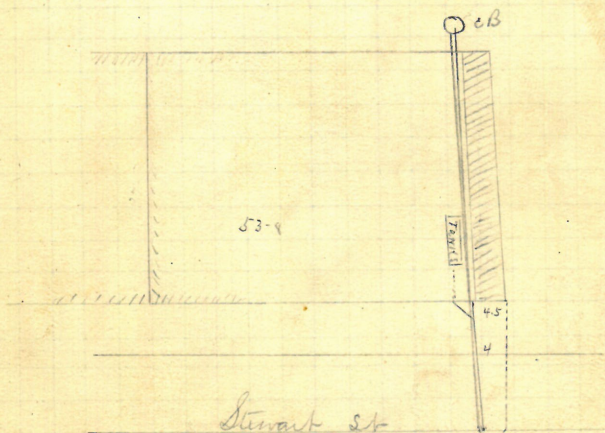
James A. Blackmon Jr

Permit 6479

Opened Dec 28 1891

closed Jan 1<sup>st</sup> 1892 cut at cut 11. ft

Plotted.



Entered Survey 82-6 South of  
1<sup>st</sup> m h South of Leedner St

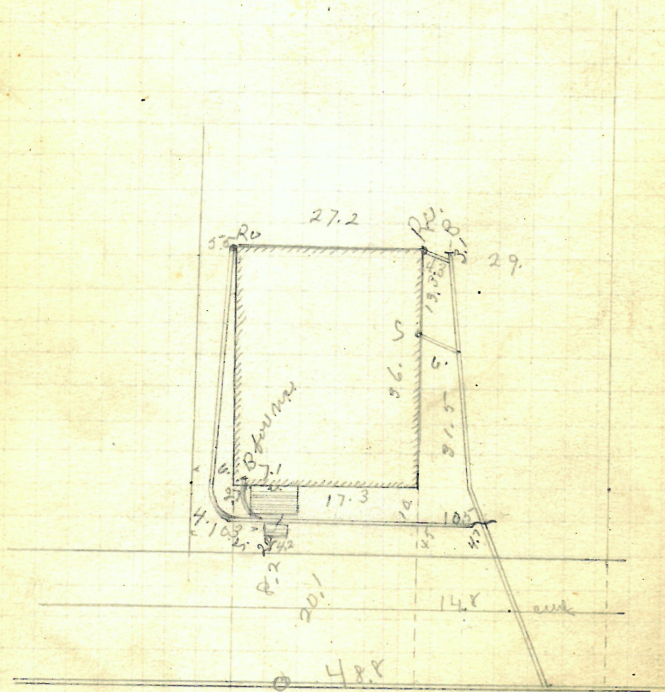
Jan 12/192



Dec 28/91.

Patrick Egan, 74 Arnold St.  
 John Keogh, D.L. Permit # 6480.

5" pipes.

Plotted

Arnold St.

Enters sewer 67.2 f. E. of 4th m.h.  
 E. of Brooke St.





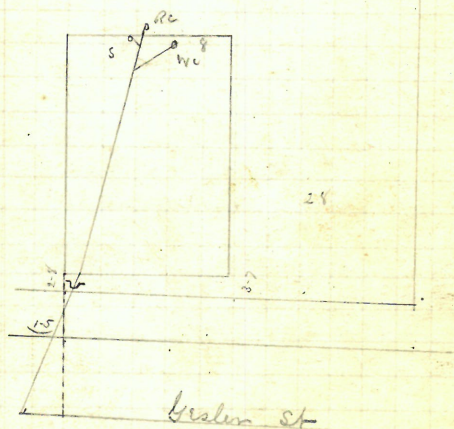
Dec 21

Hugh McLaughlin  
 3 Gesler St  
 B. Brady Dr.

Opened Dec 31, 1891  
 closed Jan 2, 1892

Permits 648  
 cut at cut 8-5  
 Pips 5 ~

Plotted



Entered Senior 28-7 East of R Jan 14, 1923  
 2nd m h West of Tinton St

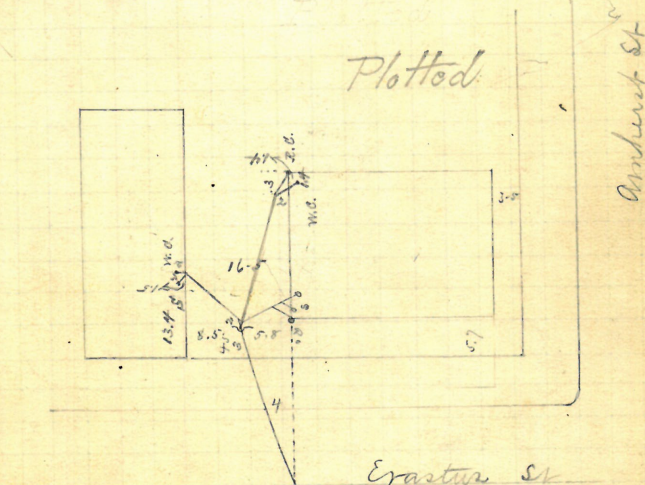
Jan. 4/92

Wm Heaton + John G. Dobbell,  
 5-77 Erastus St.,  
 N.E. cor. Amherst  
 John Keogh, D.L. Permit # 6483.

Reopened Aug. 11/93  
 Closed Aug. 11/93  
 Reopened Sept. 20/93  
 Closed Sept. 20/93  
 Reopened Jan. 3-07  
 Closed " 3-07  
 J. Peary D.L. - Cleanout  
 Reopened July 18-1919  
 Closed " 1919  
 E. Gibbons D.L. - Cleanout

Reopened June 13-1916  
 Closed " 1916  
 M. Lyons D.L. - Cleanout  
 Reopened July 7, 1931  
 Closed " 1931  
 J. H. Gammon D.L. - Cleanout

Plotted



Extend Survey 31-2 north of 7th at Amherst St.  
 R. March 12/92





129  
Jan. 13/92

James R. Grant, 88 Pleasant st.,  
N.E. cor. Knowles st.

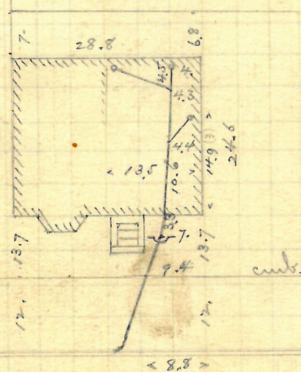
John Keogh, D.L. N.E. cor. Knowles st.  
Permit # 6485.

Opened Jan. 14, 1892.

Closed	"	16,	"	(in sh.)	
"	"	18,	"		5" high.

" " 18, " 5" pipes.  
Cut at curb, 8.7.

Plotted.



Pleasant sh

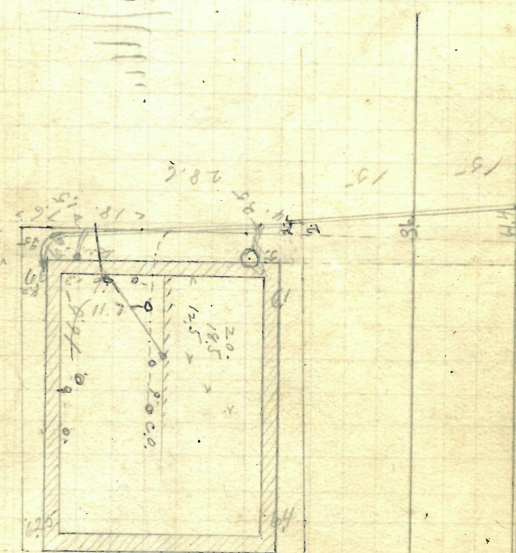
Enter sewer 180.3 ft. E. of 1st. min.  
W. of Knobel St.



Jan 8/19

George W. Butts, Jr.  
#267 Keene St.  
N.E. cor. Brown St. #177John W. Furlong, S.L.  
Proposed Mar. 8, 1929  
Elected 9, 1929  
Parnell S.L.Permit # 6486.  
6" pipes

Plotted



Brown St

Enter sewer 56.4 ft. W. of  
7th. mtr. W. of Thayer St.

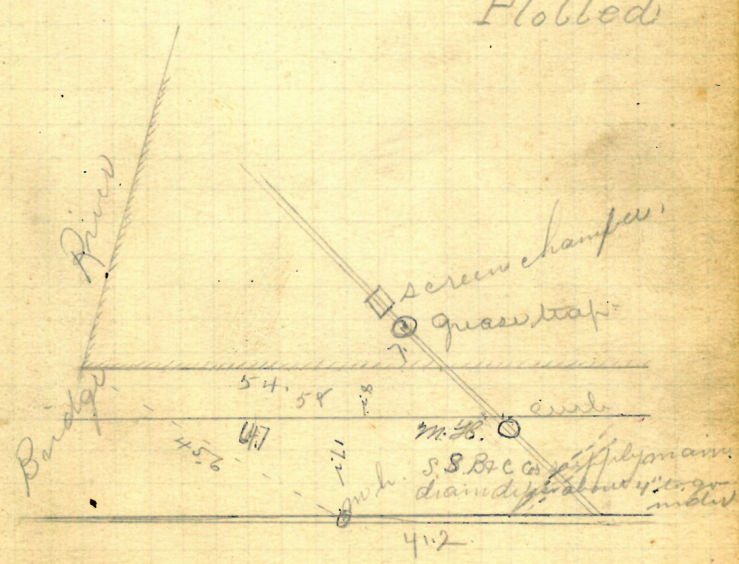
131  
Jan. 13/92

Silver Spring Bt Co. Inc.,  
C.W. Lippitt, Treas.,  
Charles St.

John Keogh, D.L. Permit # 6487.  
Opened Jan. 14, 1892.

Closed, in st., " 16, " 12" pipes.  
Reopened July 21-1904 Cut at curb, 8.4  
Closed " 22-1904 Reopened Nov. 13-1906  
J. Deary D.L. - Cleanout Closed " 14-1906  
Reopened Nov. 16-1904 V. Samiglatte D.L.  
Closed " 22-1904 Cleanout -  
J. Deary D.L.

Plotted



Enters sewer 157 ft. W. of 2nd m.h.  
E. of the river. New connection.





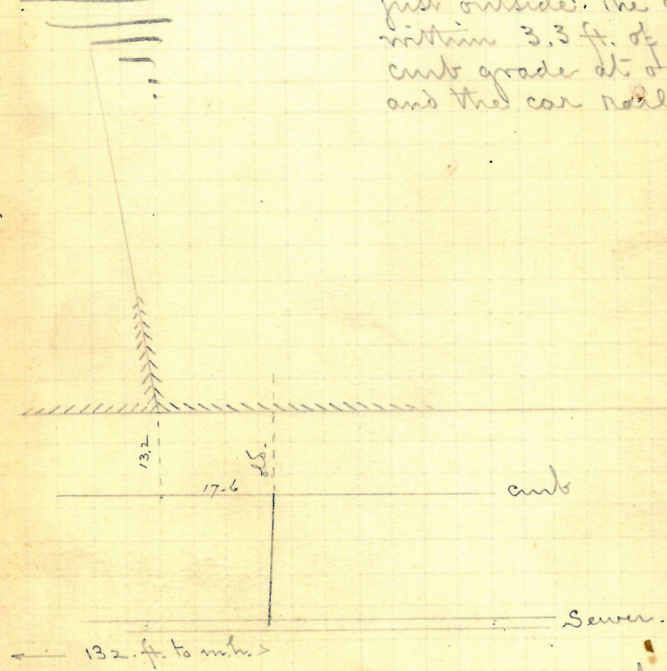
✓✓ 133  
Jan. 12/92

Charles Fletcher,  
83-105 Dorrance St.,  
Nanagansett Hotel,

J. Frank Read, D.L. Permit # 6489.  
Opened Jan. 14, 1892.  
Closed " 16, "

Cut at curb, 6. ±  
2 pipes - one over the other.  
Lower one, (brass), 1 1/2".  
Upper one, (iron), 4".  
The upper one rises,  
just outside the curb to  
within 3.3 ft. of both the  
curb grade at one end  
and the car rail at the  
other.

Plotted.



R. Feb. 8/92

These 2 pipes enter sewer, (the lower one  
through the side, and the upper one through  
the arch), 132. ft. W. of m.b. near Pine St.



134

REMOVED

Jan 25, /92

John W. Bannan

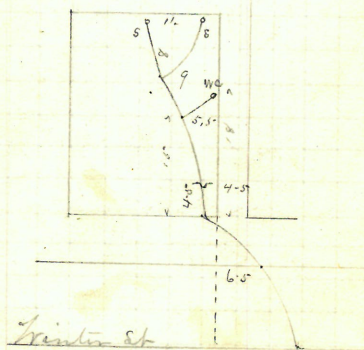
46.36 Winter St

John Keogh Sh.

Permit 6490

Opened March 14, /92

Closed " 14, /92

Cut at curb 10  
Pipes 5PlottedEntered Survey 7 ft North of  
2nd in h South of Pond St Aug 7, /92

135  
Feb. 3/92.

Hugh Hamill,

307 Manton ave.  
N. cor. Sturben st.

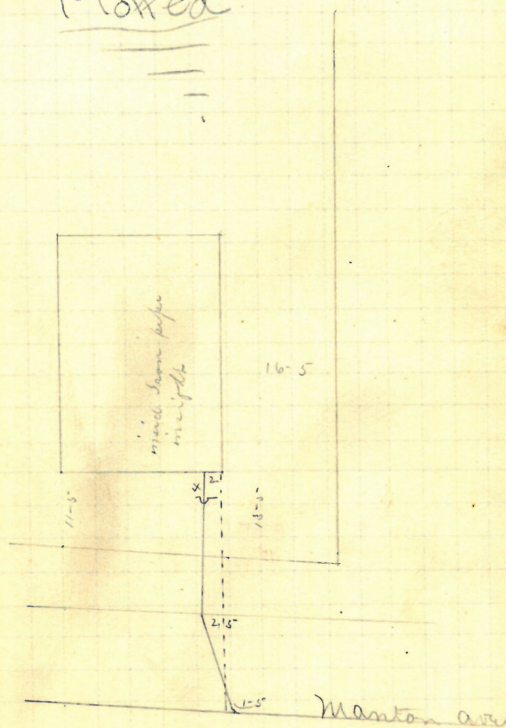
B. Brady, D.L.

Permit # 6491.

Opened Feb. 4, 1892.  
closed " 6 1892

cut at curb 10-3  
Pipes 5-

Plotted



Enters sewer 46.9 ft. W.  
of 1st. mch. E. of Sturben st.  
Aug 17/92



136

GONE

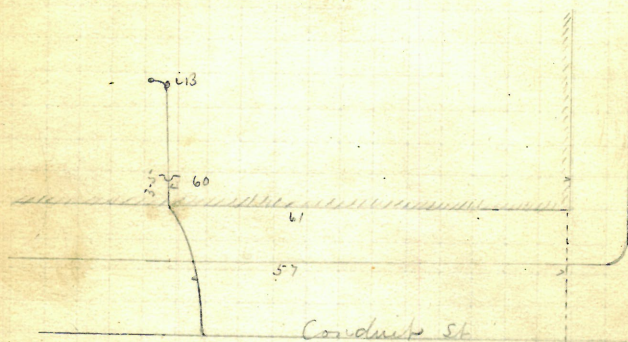
Feb-9/9

S. + B. Lederer  
 Thos. Phillips & Co., D.L. & Co. #66  
 Permit # 6492

Alpina Feb. 10 /92  
 cloud " 13. /92

cut at curb 10-4  
 Pipe 4"

Plotted



Entered Survey 95-2 East of 7th to at Stewart St  
 R. March 12/92





138✓

P- $\frac{157}{12}$

Feb. 16/92

Patrick Lynch 193 Plain st.

B. Brady, D.L.

Permit # 6494.

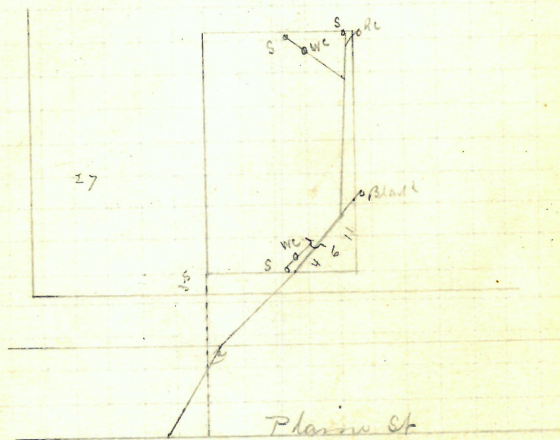
Opened Feb. 23. /92

Cloud .. 26./92

cut at curb 10-5"

Paper 5<sup>th</sup>

Plotted



Entered Survey 80. North of 1st  
7th North of Dudley St.

Page 17/92

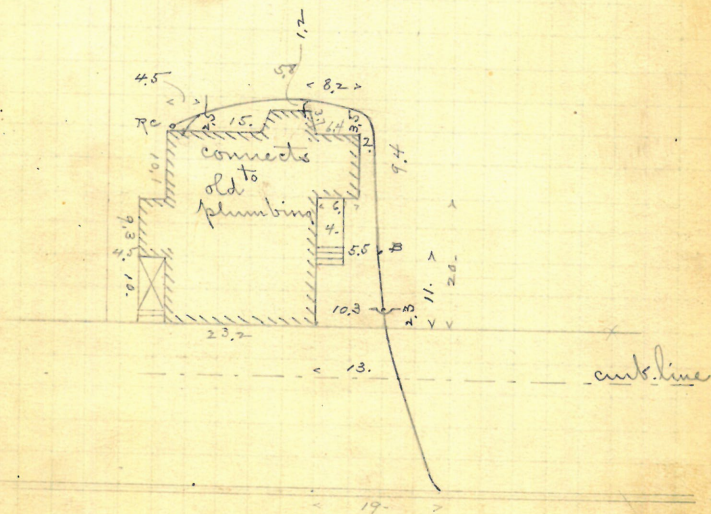
Feb-20/92 139

Opened Feb. 22, 1892.  
Closed " 25, "

Permit # 6495.

6" higher.  
Cut at curb line,  
(8 ft. out from fence);  
13 ft. below top of under  
pinning of house, as  
given by Donahue.  
Trap seals  
nearly 3"

Plotted.



Enters sewer 75. ft. S. of 2<sup>d</sup> wh.  
S. of Halsey St.

R. July 11/92



Feb. 20/

Patrick Parker + wife,  
148 Congdon St.  
John Keogh, D.L.

Permit # 6496.

Opened Feb. 22, 1892

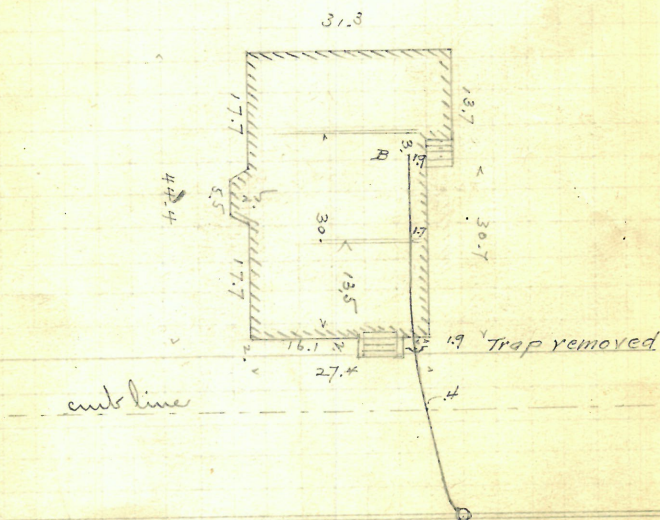
Closed " 26, "

Reo. 12/21/65 Closed 12/21/65

D.L.F. Donahue (Removed Trap  
relayed line from trap to curb)

6" pipes  
Cut at curb line  
(8 ft. out from fence  
12 ft. below level of  
top of upper step of  
front entrance.  
Trap seals nearly  
3".

Plotted.



Enter sewer at 2" inh.  
S. of Halsey St.

P. July 11/92

VV 141  
Feb. 24/92

George Briggs

Wayland ave  
NW cor Douglass st.

J. Frank Read, A.L.

Permit # 6497.

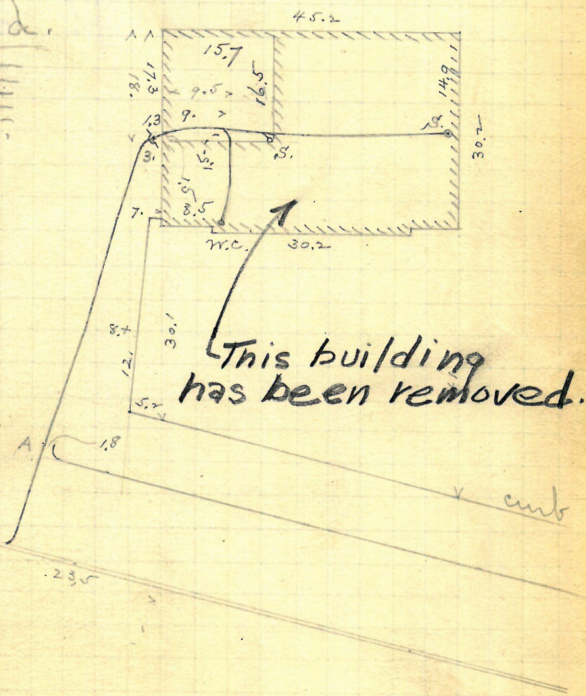
Opened Feb. 25, 1892

Closed " 27 " "

" March 3, " "

in street. 6 pipes  
cut at, and  
below level of curb  
line, (at point A.),  
9 ft.

Plotted.



Enters sewer 87.7 ft. N. of  
1st. m.h. S. of Douglass st.

R. May 16/92



142 J

Uch 11/92

Robert Morgan, #67, 65 John St.  
D.E. Barry, Jr.

Opened Uch 12, 1892. Permit # 6500.  
Closed " 15, " 5" pipes.

Reopened 12/1/58

Closed 12/1/58

D.L. J.F. O'Connor

Remove Trap.

Cut at curb 10.

Trap seals 2 1/2"

RED. 1-16-73

CLO. 1-16-73

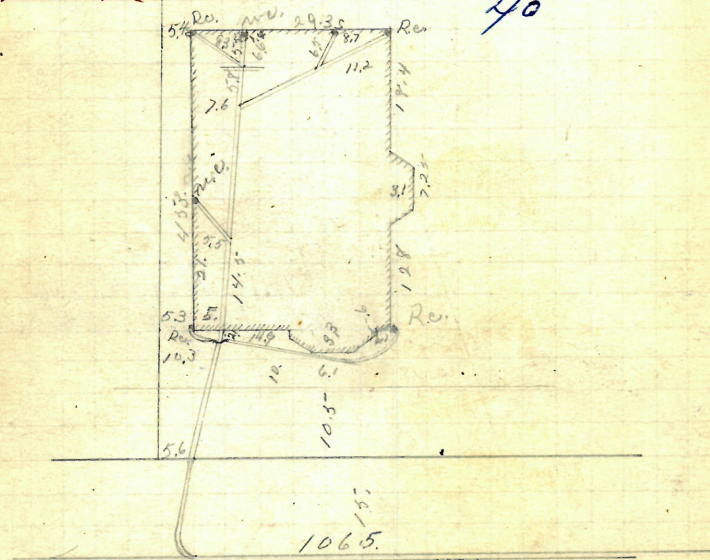
D.L. J. O'CONNOR

CLEAR

OPEN SIDEWALK

Plotted.

P. 169  
40



Enters sewer 106.5 ft. E. of  
2 m. E. of Parole St.

R. May 16/97





Mch 26/92

Sarah A. Royce, 172 Congdon St.  
H.B. Root, D.L.

Permit # 6505.

Opened March 28, 1892.

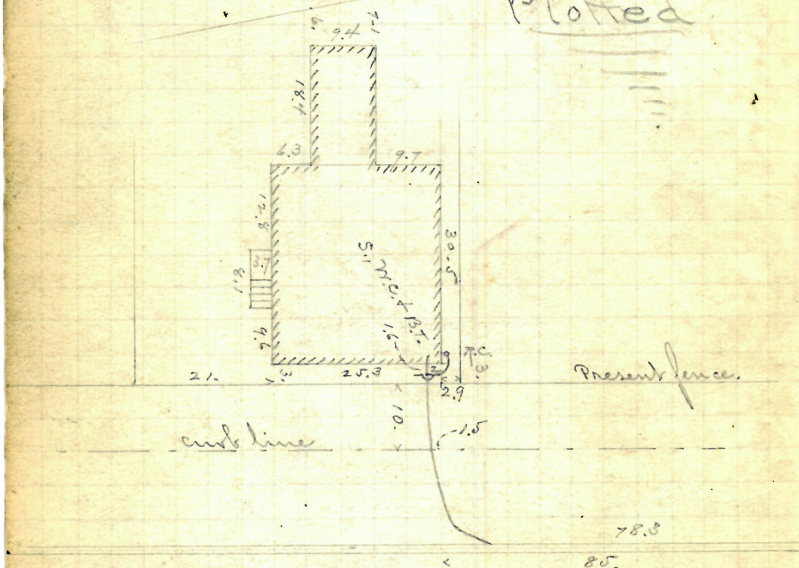
Closed Apr. 7, "

5" pipes to trap

Cut at 15 ft. out from  
house, 12.5 ft. below level of top of  
brick foundation of house.

Trap seals 5 inches.

Plotted



eters sewer 78.3 ft. l.  
of m. tr. at Hudson St.

R. May 3/92

Removed

145  
Mch 29/92.

Mary A. Thayer, #45-47, 23 Jefferson St.  
John Keogh, D.L.

Permit #6506.

Opened March 30, 1892.

Closed " 31, "

5" pipes.

Cut at curb, 10.

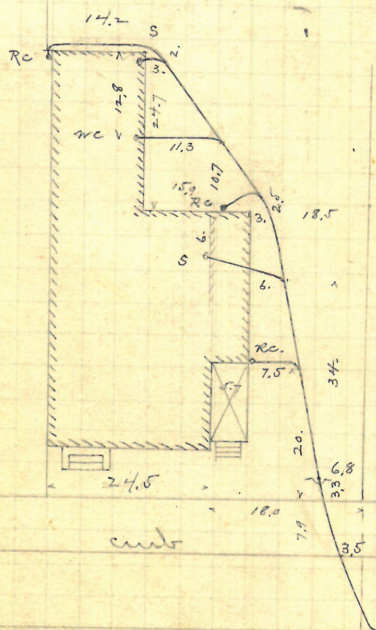
Reo Nov 30 1949 11/30/49

Reo Nov 30 1949 11/30/49

Replace R.C. & Lucking R.C.

Corner E/30 Trap seals 2 1/2

Plotted.



Enter sewer 95.3 ft. N. of 38. m.d. N. of Smith St.

R. July 11/92



GONE

Apr. 1/92

John W. Sampson  
John Keogh, D.L.  
444 Jefferson St.  
Permit # 6510

John Keogh, D.D.

Permit # 6510.

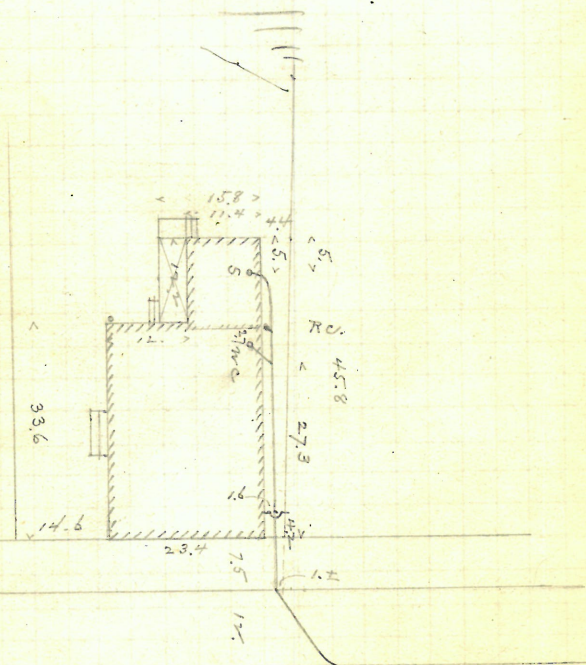
Opened Apr. 1, 1892.

Closed " 2, "

5" filus.

Cont ab cont, q. 6

Plotted



Enter nerves 348 f. l.  
of nerve at Onnis st.

R. July 11/92

H

✓ 147  
Apr. 4/92Louis E. Robinson + wife  
683 Stimson ave.

J. Frank Read, M.L.

Permit # 6517.

Opened Apr. 20, 1892.

Closed " 30, "

Cut at curb 10.2

2 Reopened - Oct. 26, 1937

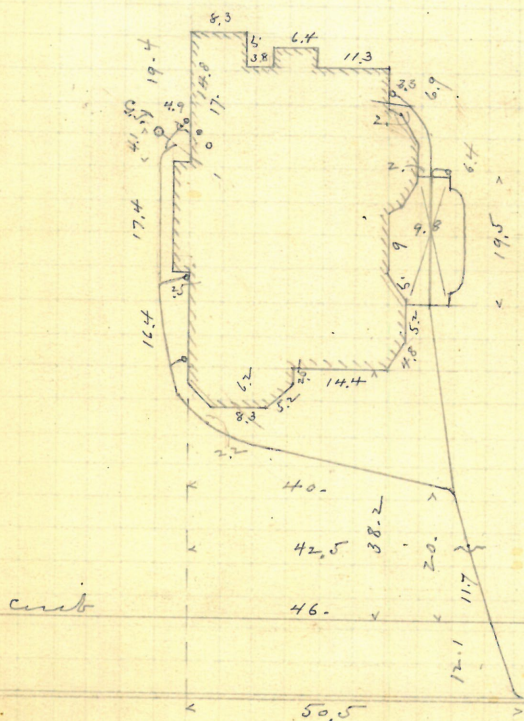
25 Closed - Oct. 26, 1937

J. Taft. - Clear

4 Reopened - Apr. 9, 1944

4 Closed - Apr. 9, 1944

P. W. Taft. - Clear

Enters sewer 44.1 ft. N. of  
20 m.n. N. of Angell st.

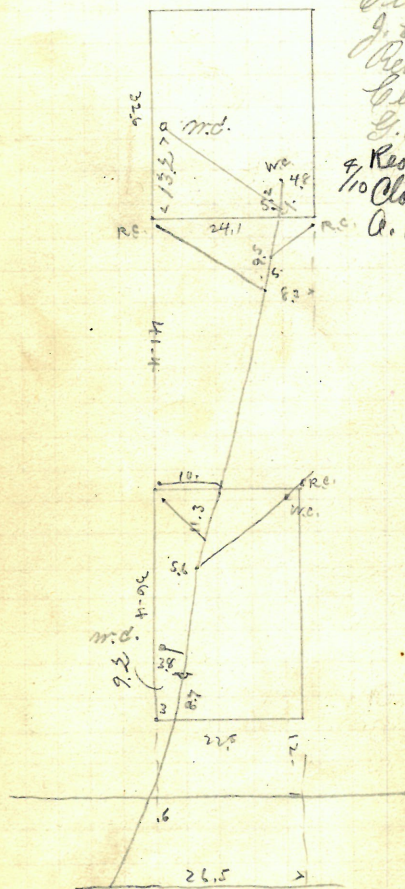
R. May 16/92



Apr. 7/92

Margaret Tully #566 W. Exchange St.  
 J. Frank Read, D.L. Permit #6521.  
 Opened April 11/92.  
 Closed " 16 "

5" pipes.  
 Cut at curb, 9-6  
 Reopened Aug. 13/1906  
 Closed " 14-1906  
 J. E. M. & Elroy D. L.  
 Reopened June 27-1913  
 Closed " 28-1913  
 E. Piccolilli D. L.  
 Reopened Apr. 12, 1944  
 Closed Apr. 12, 1944  
 A. Rossi - Clear



Enters sewer 247 ft. W. of  
 1st. n. h. E. of Dale St.

R. May 16/92

H. 168-1

✓ 4' 149

**House Removed**

Pr. 7/92

John W. Littenber, 29 Lamp str.  
F. H. Read, D.L.

Opened Apr. 8, 1892. Permit # 6523.  
Closed in str. Apr. 12, 1892 6 pipes

" " 14, " cut at curb, 8.5  
Reopened April 8-1910

Closed " 8-1910

H. Matzner D. L. - Elmwood - Reopened July 7-1914

Reopened April 8-1913 Closed " 1914

Closed " 9-1913 M. Lyons D. L. - Elmwood.

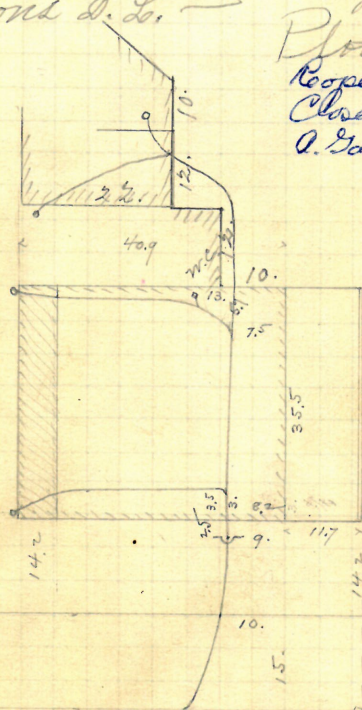
M. Lyons D. L.

Plotted

Reopened 10/7/66

Closed 10/7/66

O. Garrison (Lippitt St. School)



R. July 11/23

Enters sewer 85.6 ft. S. of 1st. m.h.  
S. of Lippitt str.











Humboldt Ave.

S.E. <sup>#17</sup> Elm Grove ave

J. Frank Read, W.L.

Permit # 6535.

Opened Apr. 21, 1892.

Closed " 26 "

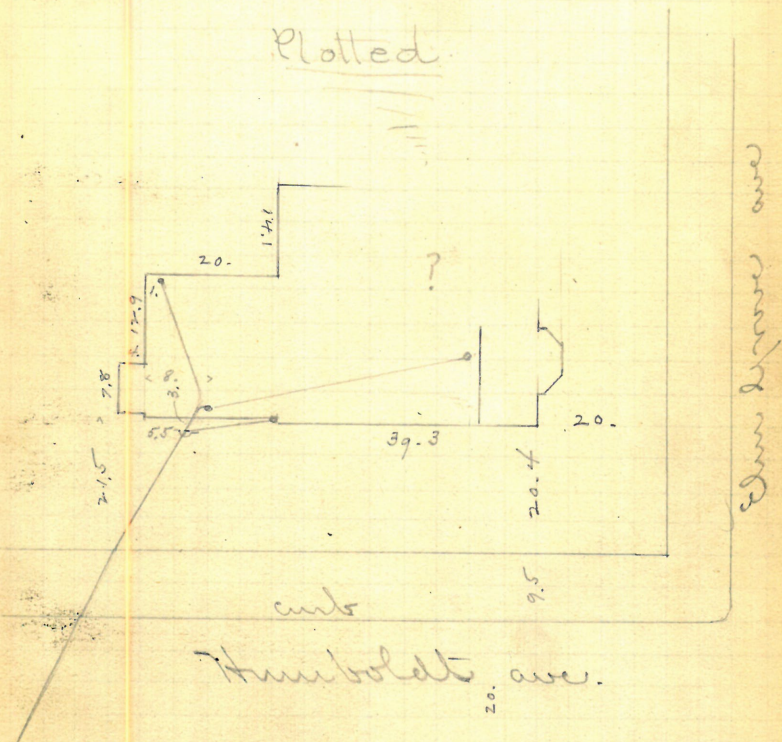
Reopened Mch. 20-1919

Closed " 22-1919

A. Robinson D. L. -

Cut at 5" pipe  
cut 10. ±  
(F. Cannon.)

Plotted



Enters sewer 74.3 ft. W. R  
of 2d m.h. W. of Wayland ave.

R. May 16/92





REMOVED

155  
Apr. 19/92

Emily A. Armington,  
22<sup>nd</sup> Common St.,  
17

W.E. Sherman, D.L. Permit # 6541.

Opened Apr. 21, 1892.

Closed " 22 " 5" pipes

Reopened June 9-19/4 - cut at cuts, 9.4

Closed " 9-19/4 -

W<sup>m</sup> Yates D. L. -

Plotted



Mulberry St.

Common St.

Enters sewer 68.3 ft. W. of  
W. m. W. E. of Mulberry St.

R. May 3/92

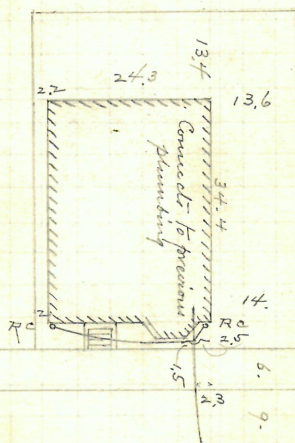


156 ✓

Apr. 22/92

~~Revised~~  
 Thos. Moore, 29 Schofield St.  
 J. A. Blackman, S.L. Permit # 6546.  
 Opened Apr. 22, 1892.  
 Cloud " 23, " 5" pipes  
 cut at curb, 10.4

Plotted



Enters sewer by ft. N.  
 of m. h. at angle.

R. May 23/92

REMOVED

157  
Apr. 22/92

Welcome, Angell Est.,

289 Common St.

S. Cor. #16 Mulberry. (#16)

Wm. E. Sherman, D.L.

Permit # 6552.

Opened Apr. 25, 1892.

Closed

26

5" pipes

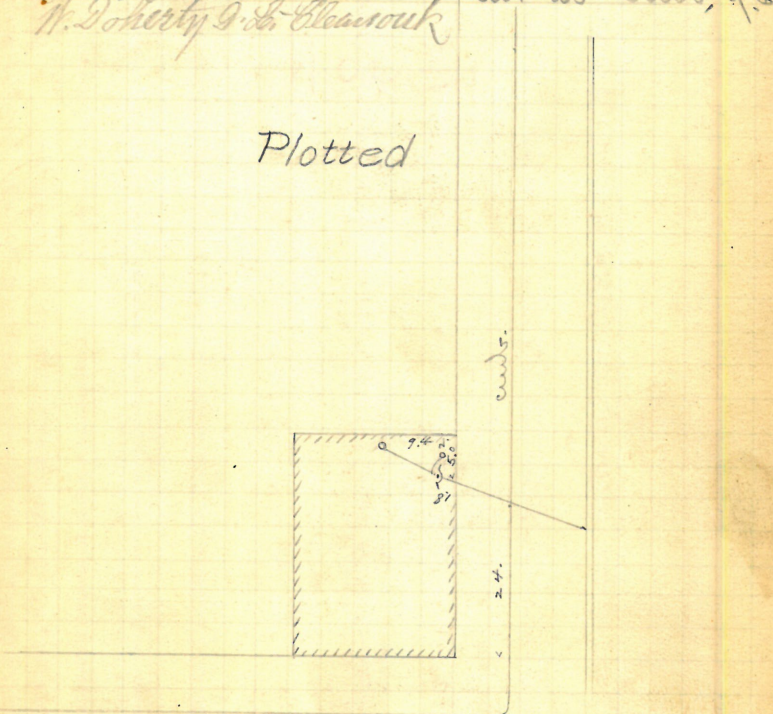
Reopened Oct. 19, 1945

Closed " 30-1945

W. Donohy & S. S. Clearouk

Cut at curb, 9.6

Plotted



Enters sewer 65.3 ft. W. of 1st. mch. E. of Mulberry st. R. May 3/92









160 <sup>✓✓</sup>

Removed

Apr. 28

Hinsley, W. Bowen

25 #?

Jefferson St.

N.W. corner

#36 Cherry

J. Frank Read, D.L.

Permit # 6560.

Opened Apr. 30, 1892.

Closed May 2, "

Reopened Sept. 9, '99

Closed " 11, '99

A. Piello D.L.

5" pipes

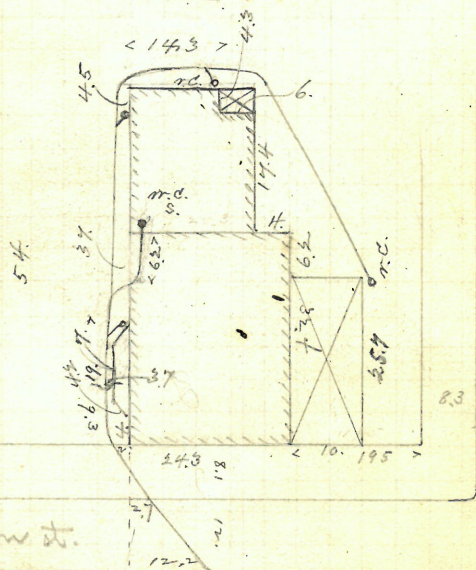
Cut at curb, 9.5 E.

Reopened Aug 25, '99

Closed " 25, '99

W. P. Chadley D.L.

Plotted



Jefferson St.

Cherry St.

Enters sewer 74.5 ft. N. of  
1st. m.m. S. of Cherry St.

R. May 16/92

**Removed**

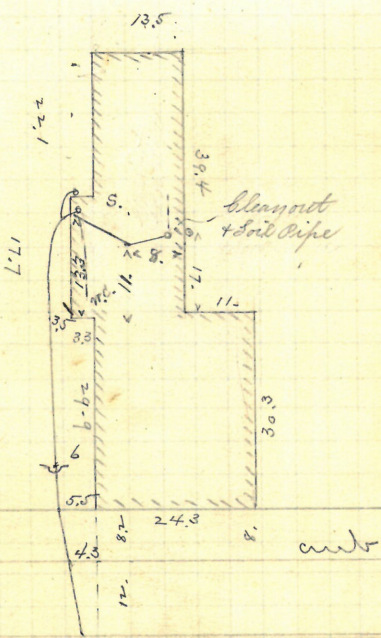
161  
Apr. 28/92

Hairless W. Brown  
#37 + Jefferson St.  
Frank Reed, D.L.

Permit # 6561.  
Opened May 2, 1892.  
Closed " 4 " 5" pipe  
Reopened Dec. 19-1901  
By Jas E. Battelle, L.

Measure taken approximately -  
7/10 Reopened July 18, 1939  
Closed - 1939  
S. Sederman - Relay

Cut at curb, 9.9



Enters sewer 46.3 ft. N. of 1st. m. N. of Cherry - R. May 16/92



162 ✓

REMOVED

Apr. 28

Otis Chase Est.

29 and 31 Jefferson st.

E. corne Common

W. E. Sherman, D.C.

Permit # 6562

Opened Apr. 30, 1892.

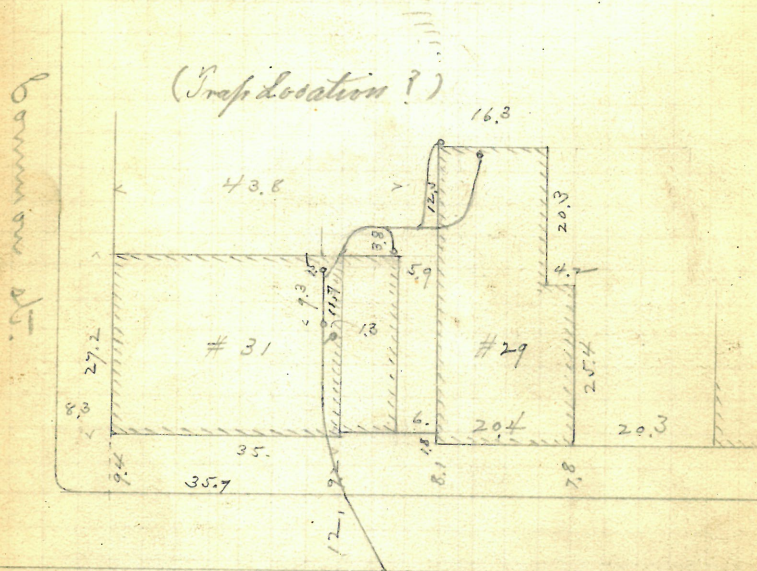
Closed May 3, 11

5" pipe.

Cut at end, 10.

Plotted

(Trap Location?)



Jefferson St.

Enters sewer 99.5 ft. N.  
of 2<sup>d</sup> int. N. of Liberty St.

R. May 16/92

GONE

✓ May 163  
2/92

Susan S. Howard  
Bernard Brady, AL. 175 Charles St.  
Permit #6569

Opened May 7, 1892  
Closed " 9 " "

Cut at curb, 92

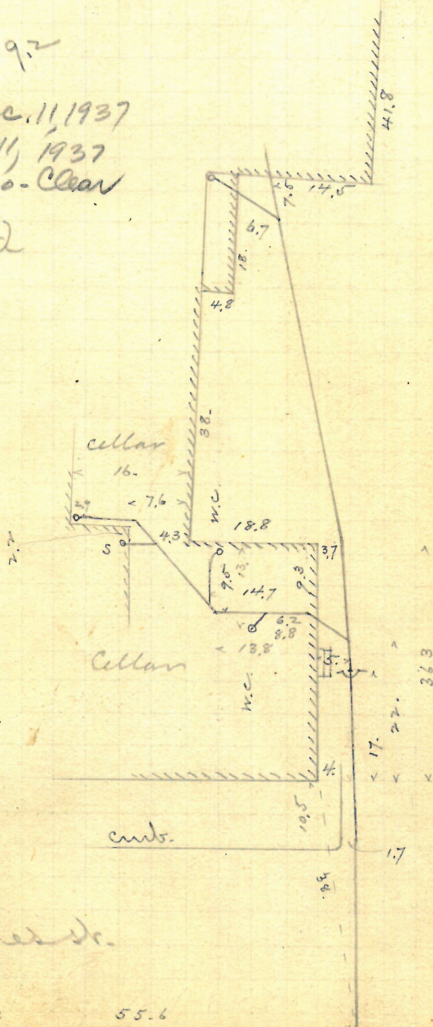
5" pipes.

Reopened - Dec. 11, 1937

Closed - Dec. 11, 1937

T.A. Gammino - Clear

Plotted



Charles St.

Extends sewer 55.6 S. of 1st int. N. of Charleston ave  
at point 338. (see plan 170-1.)

R. July 11/92



May 2

Angelo Frattarinos and wife.  
15 16 and 18 Dale St.  
B. Brady, D.L.

Permit # 6570.

Opened May 6, 1892. 5" pipes.

Closed

Reopened Sept 11, 93

Closed " 25, 93

D. M. Canley D. L.

3/ Reopened - Mar. 29, 1937

27 closed - Mar. 29, 1937

P. Taft - Clear

5 Reopened - May 27, 1937

25 Closed - May 29, 1937

P. Taft - Add C.O.

No curbs or st. grade

Reopened July 15-18/15

Closed " 1915

P. Galloway D. L. - Clear

Reopened Sept. 24, 1924

Closed " 26, 1924

J. De Maggio D. L. -

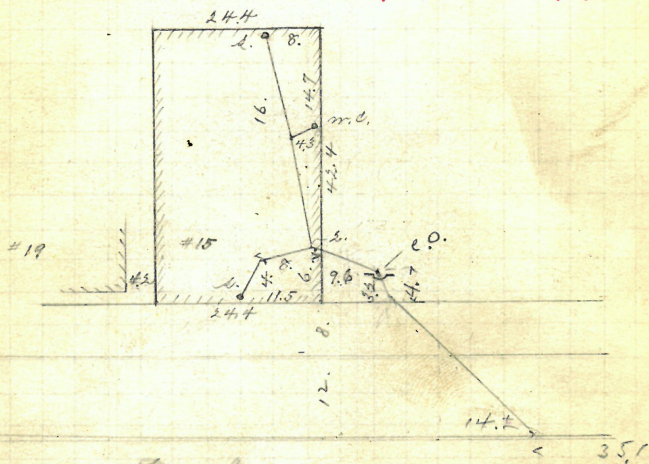
Clear

Reopened 8/19/57

Closed 8/20/57

D. L. F. Donahue

Clear, replaced 2. pipe



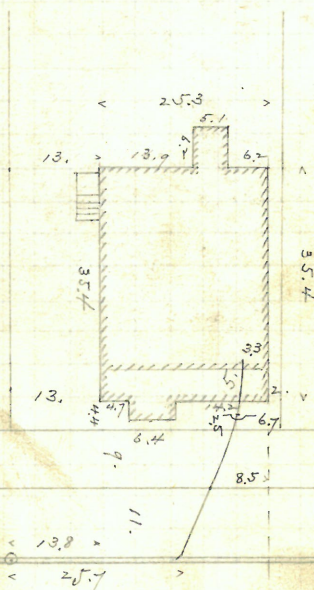




May 2/92

John Geissler, 29, 44 Marshall St.  
 W.E. Sherman, Sr. Permit #6572.  
 Opened May 3, 1892.  
 Closed " 5<sup>1/2</sup> " 5" pipes.  
 Cut at curb, 9.3 -

Plotted.



Enters sewer 25.7 ft. N. of  
 m.h. at Peirce St.

R. May 16/92





