

2

P 162-17 GONE

Robert Steere

91- Pleasant St

S.W. ⁹⁰⁻⁹² ~~Corbett~~ Camp St

James P. Millard D.D.

Permit 6-7-23

V

tent at curb

Opened June 12-1890.

Closed 17-1890

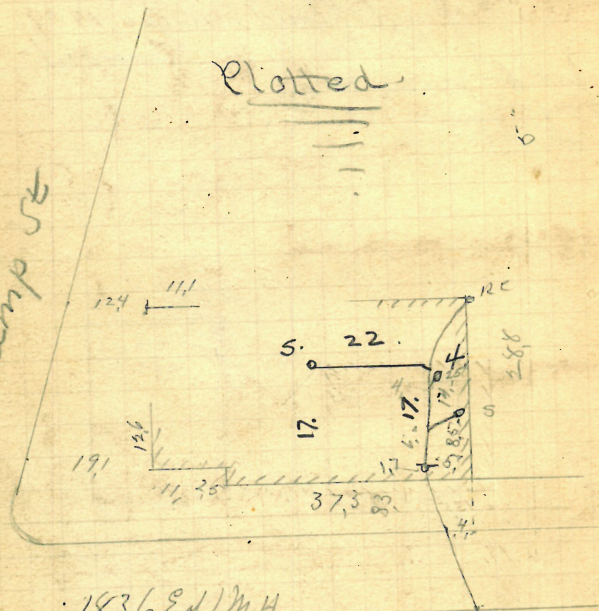
Reopened Nov 1, 1933

Closed Nov 2, 1933

a. a. Mutofsky add. W.B.

Plotted.

Camp St



183,6 E of MH

Western St.

Removed

3

Peter Olsen
20-22 1/4 Robinson St.
J Frank Reed D.L.
Permit 6724
V Cent at Camb 105
Opened June 14-1890
Closed " 14-1890
Reopened Oct 31-1905
Closed Apr. 3-1906
A. Diello D.L. - Cleanout
Reopened Feb 9-1906
Closed " 10-1906
A. Diello D.L. - Cleanout

Plotted

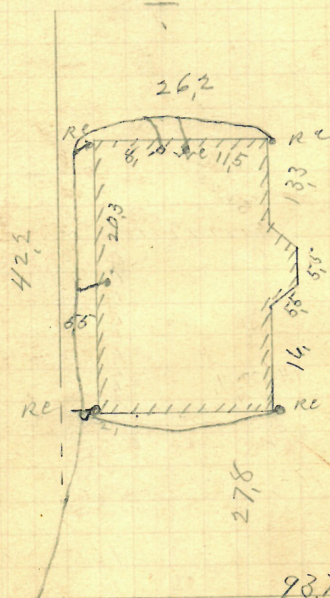


165.3 W of 121st
Bay St.

4

Thomas F Milne & Wife
 No. 9, Villa Avenue
 of Frank Read D.L.
 Permit 5725
 Cut at curb 95'
 Opened June 14 - 1890
 Closed " 17 - 1890

Plotted



937 W of 1st St
 " Faber Ave

$\frac{162}{27}$

5

Ellen M Arnold Wife of James B

234 Broadway

Thos. Phillips & Co D.L.

Permit 5727

Ent at curb

10.5

Opened July 18-1890

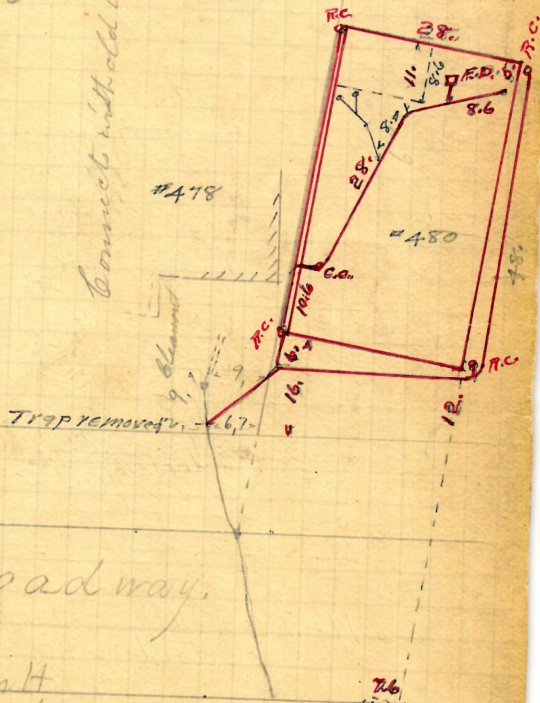
Closed " 22-1890

4/11/66 Closed 4/12/66 D.L. F. Ricci (Disc from #486

side by D. Amatore 4/6/66 See 4/11/66 Ext.

Plotted.

Connect with old work



Broadway.

16.3 E of M.H.
Har Knife St

6

69

Charles L. Eaton

58 Grove St.
Thomas Phillips & Co DL

Permit 5-728

V

cut at emb 10.5

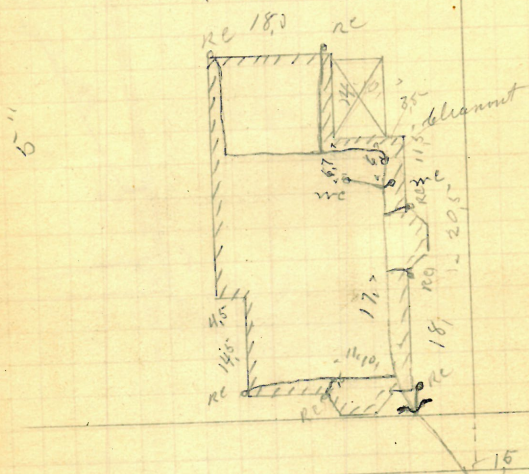
Opened June 18-1890

Closed " 23-1890

Reopened June 25-1902

Closed " 26-1902

J. Deary & S. L. - Cleanout

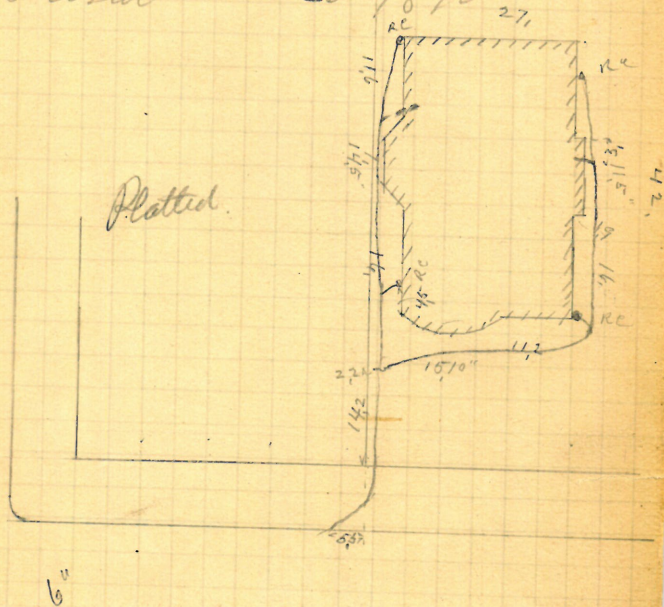
Plotted112.7 yr of M.H.
at Andrew St.

288 John M Rounds
Humbolt Avenue
Tabor Ave Sewer

J Frank Read D L
Permit 5729

Opened June 17-1890
Closed " 26-1890

Tabor Ave



Entered at Humbolt Ave

8

PLAN # 161-6

Old National Bank, other

21-23 Wyborst St

J Frank Road D Z

Permit 6-730

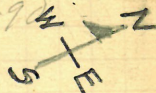
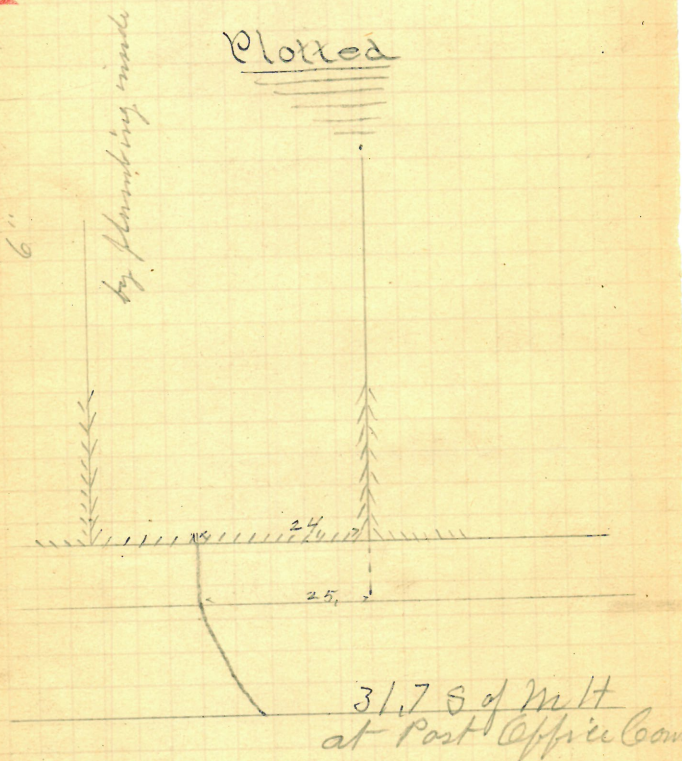
V Cent at Cent b.

Opened June 18-1890

Closed 20-1894

SEE FLYER

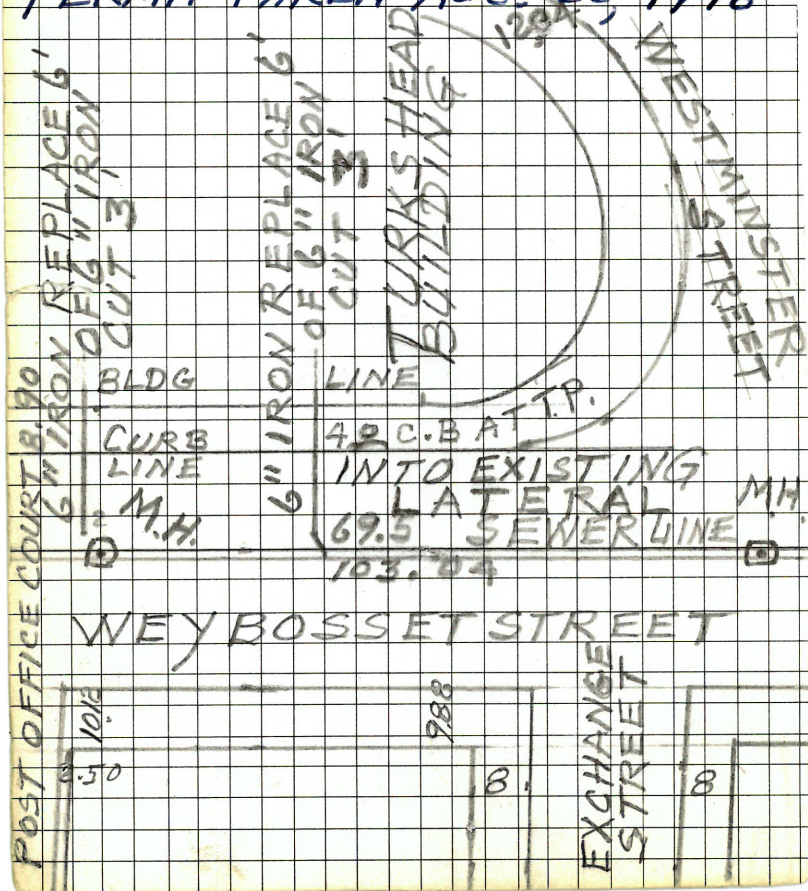
GONE

Plotted31.78 of M/L
at Post Office Corner

5730 D.L. VINCENT ZARRE
 PERMIT NO. PLAN # 161-6 # 11-17 WEYB
 OWNER TURKS HEAD LOCATION STREET
 BUILDING
 OPENED 9/8/78 CONNECTED 9/8/78 CLOSED STREET 9/8/78 CLOS
 ENTERS SEWER
 CROSSSES CURB BOOK 729
 CUT AT CURB PAGE 8
 3 FT. CU

REMARKS REPLACE C.I. PIPE
 6" IRON
 TWO CONNECTIONS INSP. V.E.M.
FLYER

PERMIT TAKEN AUG. 23, 1978

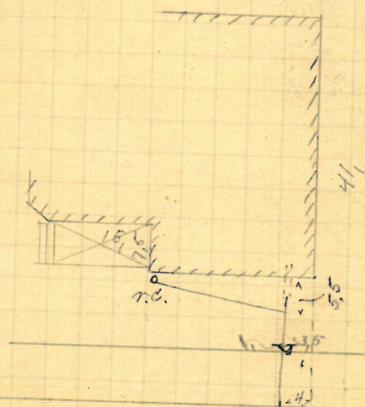


Joseph Lenthoe
 67 Grove St 51 W Lot 64 Almy St
 J Frank Read D.T.
 Permit 5731

Opened June 20-1896
 Closed " 21-1896
 Reopened & Closed Oct. 25-1901
 Phot. H. Doyle D. S.

Plotted.

Almy St.



45.9 W of 12 ft
 " Almy St.

Geo W. Prentice

23-25- Yobey 8't

6 - Tobey & Co
Thos Phillips & Co GL

Permit 5734

Cent at Cent 10.5

Opened July 1-1890

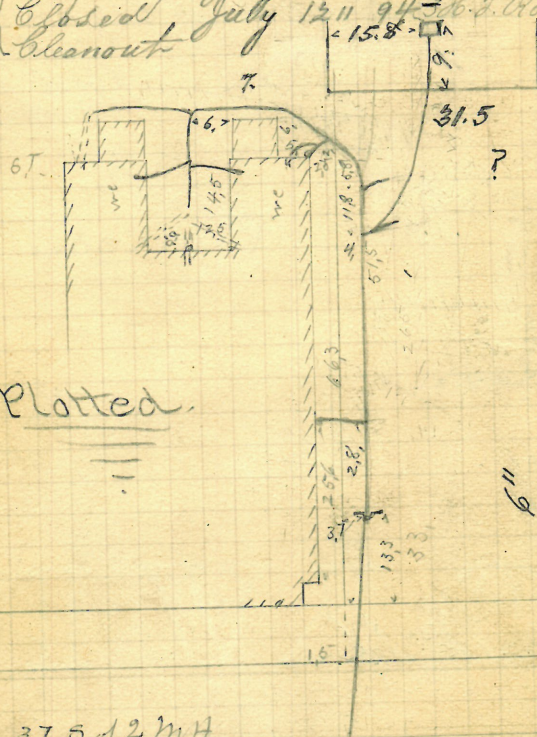
Box 18-1890

Reopened July 12th 94

Closed, July 12th 94

Cleanout

211 94-5 H. L. Root & Co.

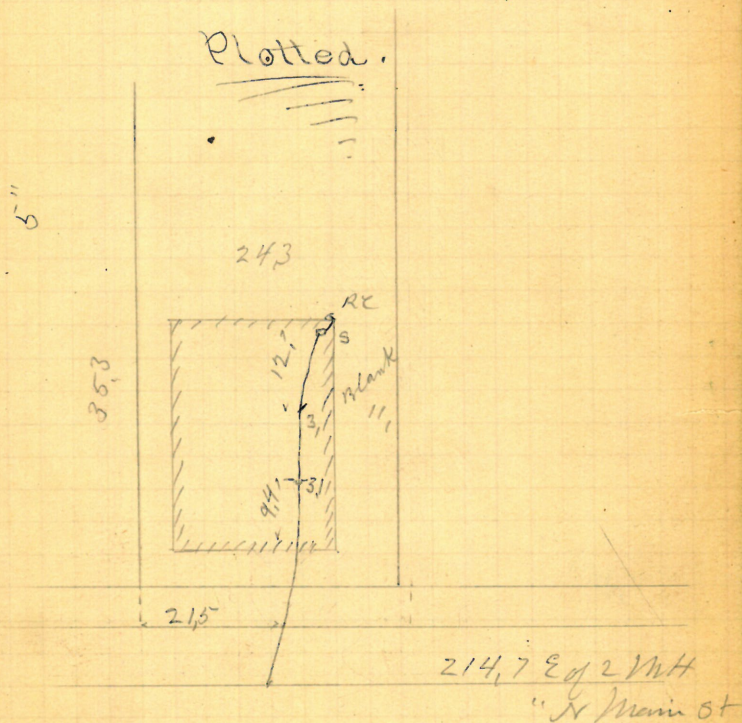


Plotted.

3.75 of 2 mH

1st Broadway

32 John Brady
 18 Royal St
 Bernard Brady D.L.
 Permit 5737
 V Cut at curb 8.5
 Opened June 23-1890.
 Closed " 24 1890



Reopened Nov 11 1893

Closed Nov. 11. 1893 by C. R. Blackman D.

Reopened July 13-1907

closed " 13-1907

A. Aiello D. L. ~

Plotted

Received Sept. 21. 1916

Closed 11 21-1916

J. Deary. O. L.

Received Dec. 13-1921

Closed 11 23-1921

G. Riccitelli, L.

Clarrack —

- 4: Sept. 21-1916- 4

House moved

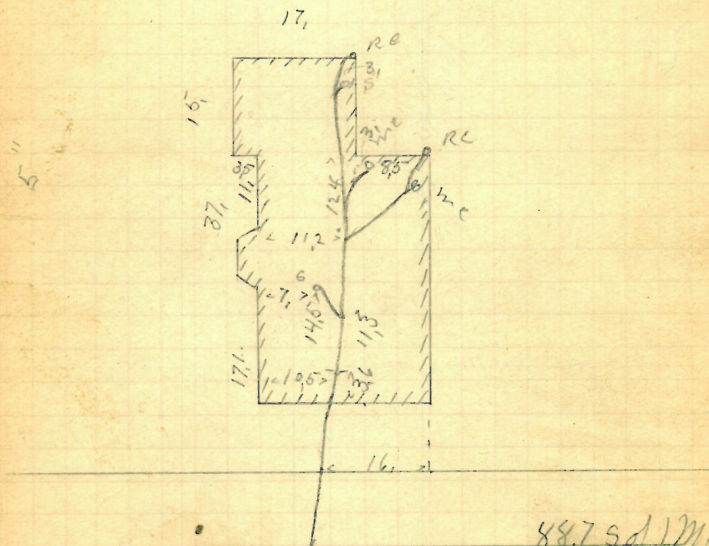
10' 10 South -

100, 3 of 1 MH
N. Penn 56.

GONE

David Patt
 11 Goble St.
 Jason A Blackman DL
 Permit 6-746
 Opened July 2-1898
 Closed " 5-1890

Plotted.



88.75 of 1211

Meador 84

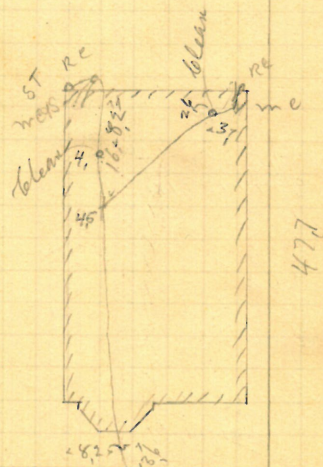
GONE

25

Adelia S. Eddy Wife of Andrew B
77 60 Cornstock Ave
John W. Furlong D.L.
Permit 5-747
V Cut at curb 810
Opened July 2-1890
Closed " 7-1890

Connected on the outside

Plotted.



56.5 W of 2nd H
" Taylor St

26

IP $\frac{163}{3}$

N.W. Cor.

Sophie G Carlisle

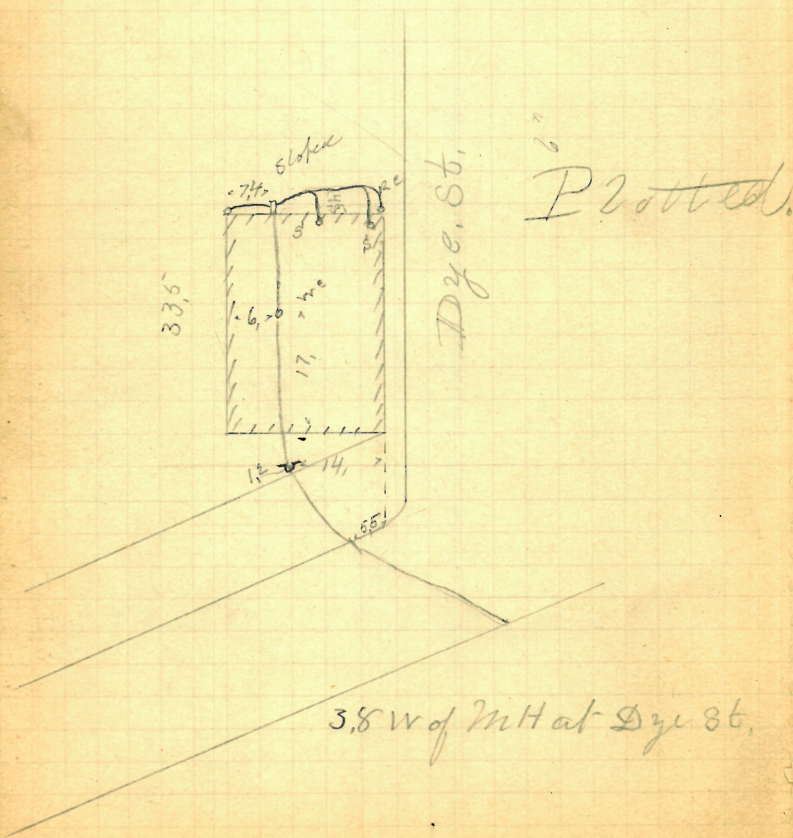
Dye St 19 Broadway

Frank Read D.L.

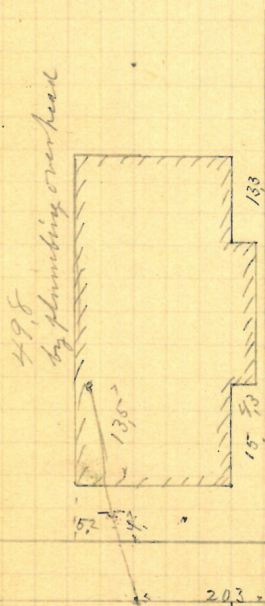
Permit 6-748

Opened July 7-1890

Closed " 10-1890



Mary A. Clark
 51 Grove St.
 Frank Read & L.
 Permit 5749
 Cut at curb 104"
 Opened July 11-1890
 Closed " 12-1890



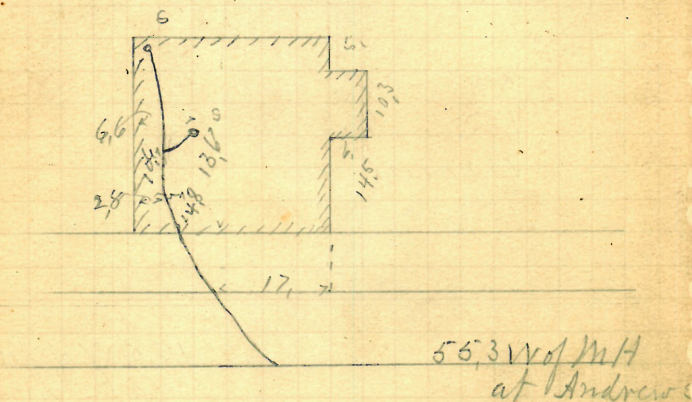
Plotted.

15.8 W of MH
 at Andrews

#61 Mary A Clark
 56-57 Grove St
 J Frank Read D.L.
 permit 5750
 V Cent at Comb 10.
 Opened July 14-1890
 Closed " 15-1890

Plotted

5"



36-3, Sd 1 M H -
" at will are

closed Jan 5-1906

G. A. Perry & S. L. - Cleonowh

Reopened Mch. 17-1909

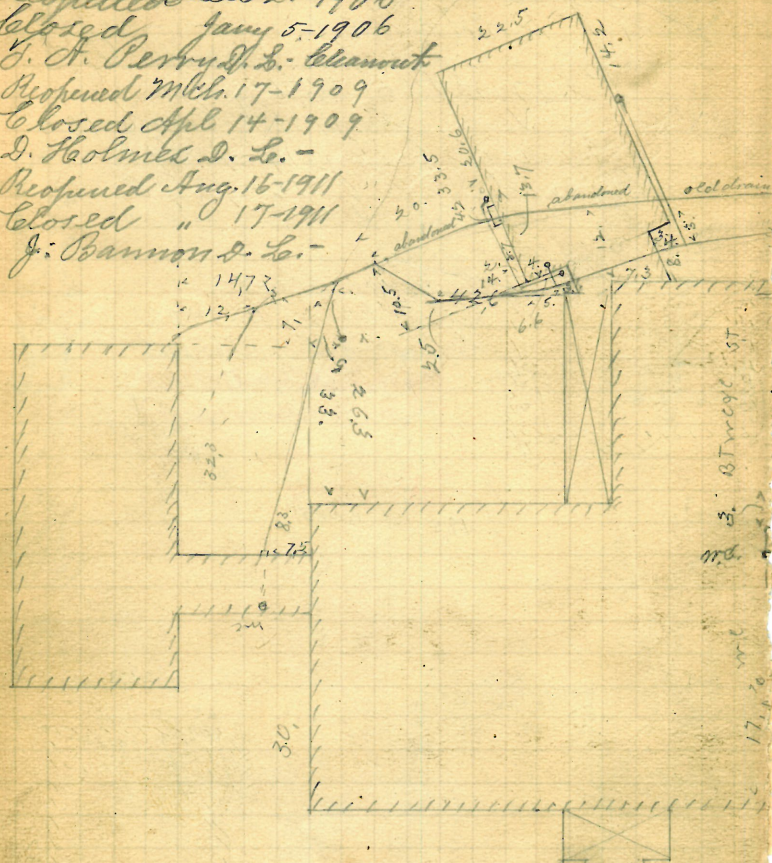
Closed Apr 14-1909

D. Holmes D. L. -

Reopened Aug. 16-1911

Closed " 17-1911

J. Bannon & Co.



Plotted.

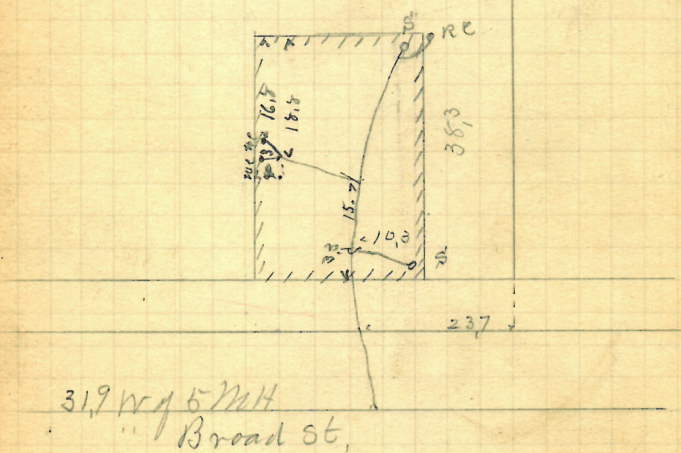
147, S of M H at Penn St,

Patrick Smith
36 Dartmouth Avenue
Jason A Blackmar D.L.
Permit 575-4

Opened July 8-1890
Closed " 10-1890
rent at least 10.1

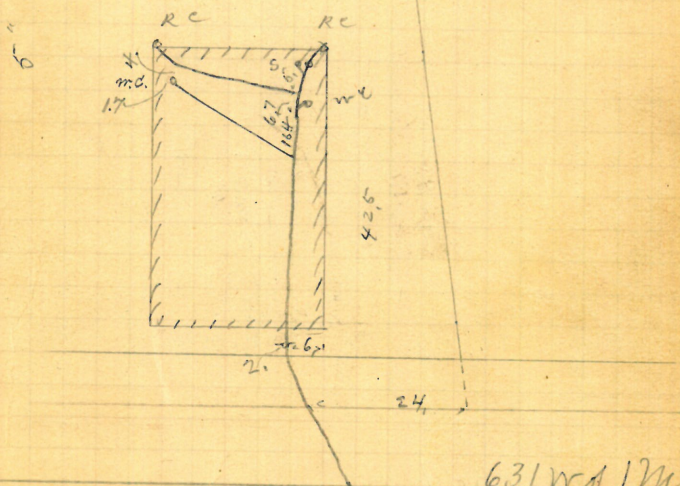
reopened Oct 10/92 Reopened Oct 31/99
closed " 19 " Closed May 2/99
M. M. Hally D.L.

Plotted



Magdalena Wunderle
 411 Washington St.
 Jason A. Blackmar D.L.
 Permit 5755
 V Cut at curb 10.3
 Opened July 10-1890
 Closed " 14-1890
 Reopened & closed Nov. 5-1898
 J. Deary D. L.

Reo 12/2/53
 CIO 12/2/53-CLEAR
 M.T. POSSI - REMOVE TRAP
 Plotted



631 W of 1st H
 E Lafayette

13

Bernard O. Byrne
 & Hoyle St.
 Jason A. Blackmar D.L.
 Permit 5-7-56

cut at curb 9.4

Opened July 11-1890

Closed " 15-1890

Reopened Oct. 2-1901

Reopened July 25-1918

Closed " 3-1901

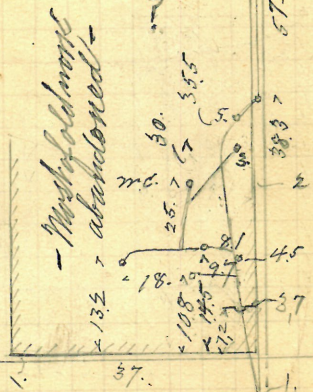
Closed " 26-1918

J. E. Graham D. L.

P. R. Walster D. L.

Plotted

Exempted for
 Swedish Church



833 S of 1st St.
 " Finner St.

Est Elisha Dyer

15-13

Dyer St.

Patrick Gurney D.L.

Permit 6-76-7

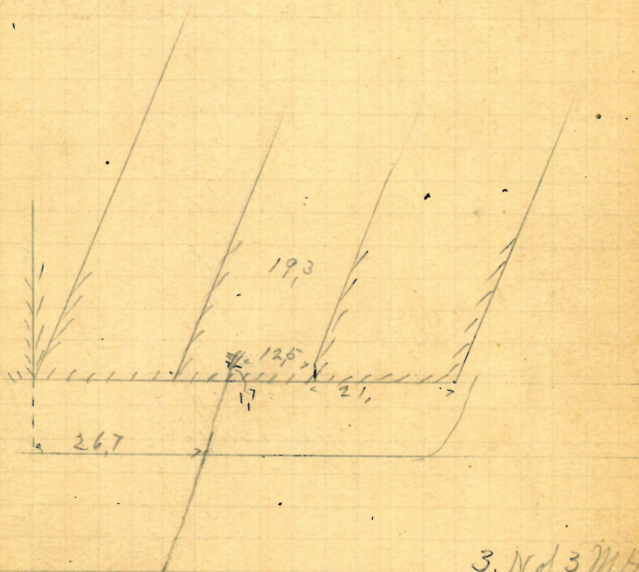
V

Cent at curb 8.3

Opened July 14-1890

Closed " 15-1890

Plotted.



3, N of 3 M H
at P.O. Cent

101-103

Wm H. Hoinds
 Governor St.
 James B. Beck D.C.
 Permit 5768
 V. Cut at foot 8.
 Opened July 14-1890
 Closed " 16-1890

Plotted.

Connects with drain
 previously laid

6"

5'3"

8'4"

1'9"

1'5"

1'2"

2'3"

1'3"

2'6"

1'3"

2'6"

1'3"

2'6"

325

155

55

21

26

21

26

21

26

21

26

21

422 N 91 M H
 Powers

37

James Davis D.L.
Permit 5759

Permit 5759

Opened July 14-1890
Closed " 14-1890

Closed 14-1890

Reopened Sept. 19-1916

closed " 1916

J. Appleton & Co. -

Received Nov 24-1916

Closed 11-28-1916

J. S. Musinger & Co.

Reopened Mar. 30 '38

Closed - Mar. 30, 38

Wm Sullivan-Repairs Plotted

See Drawer No 32
Sheep - No. 13

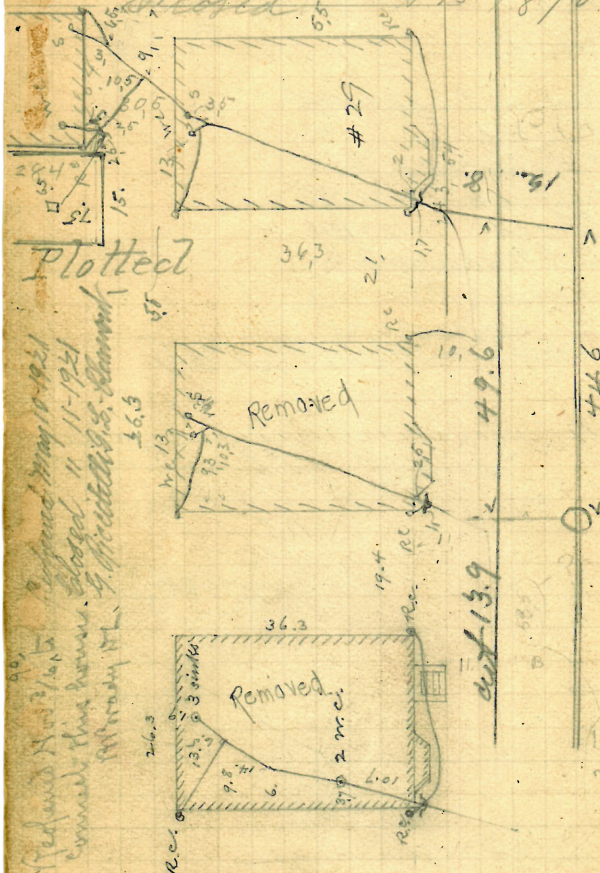
Crosses Cont 2,5 S of driveway C

5648 d 2 n H

N. Hinderton St

Owen Kelly
Bernard Brady Knight St.
Permit 5-760

Opened Aug 2-1890
Closed 15-1890



Reopened May 10-1921
Closed 11-1921
Windy St. - 9.0 ft. S. of the S. corner

Reopened July 29-1923
Closed 11-29-1923
C.D. Minto's Ind.
Reopened May 4-1925
Closed 11-15-1925
Windy St. - 9.0 ft. S. of the S. corner

Reopened Oct 9-1931
Closed 11-1931
C.D. Minto's Ind.

Eastern Corner 44.6' East of 2nd man hole
" " Knight Street

Ex 5760

City of Provo (Wading Pool)

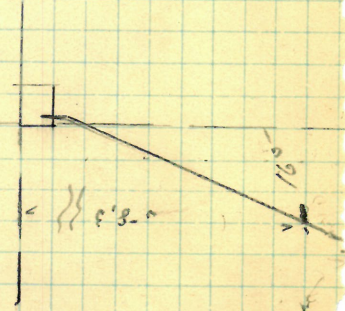
Oct 13/31

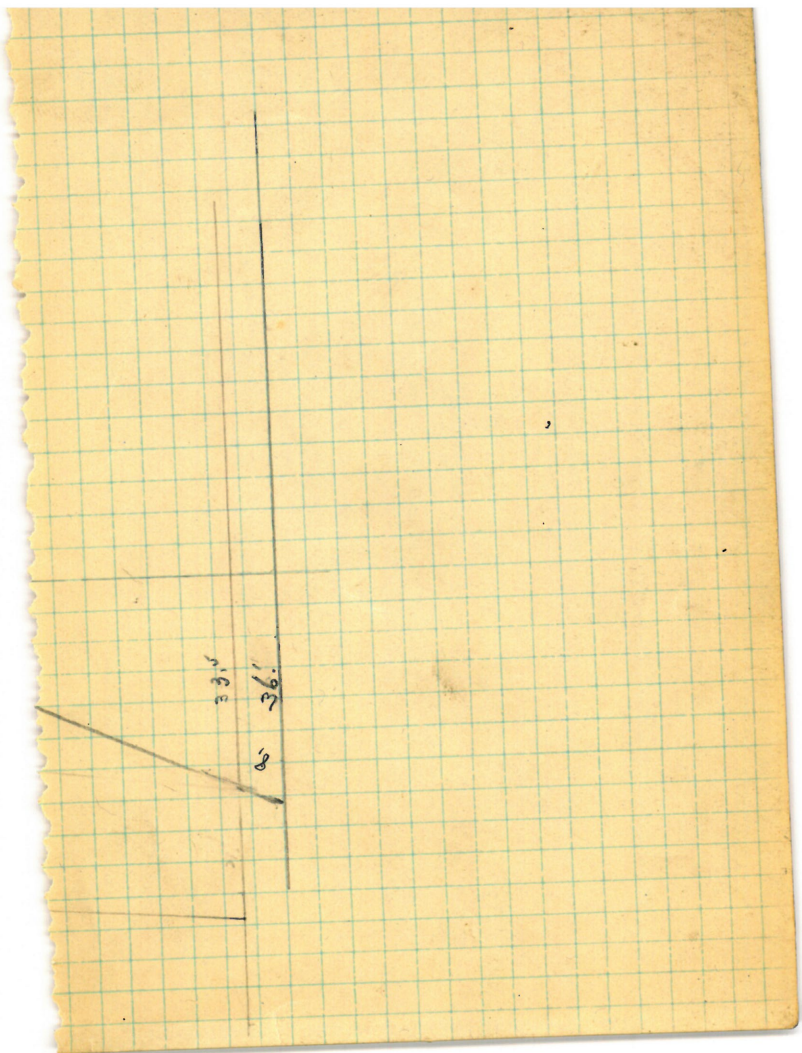
29 Feb 27

Opened Oct 13/
Closed Oct 14/31

J. Samuino

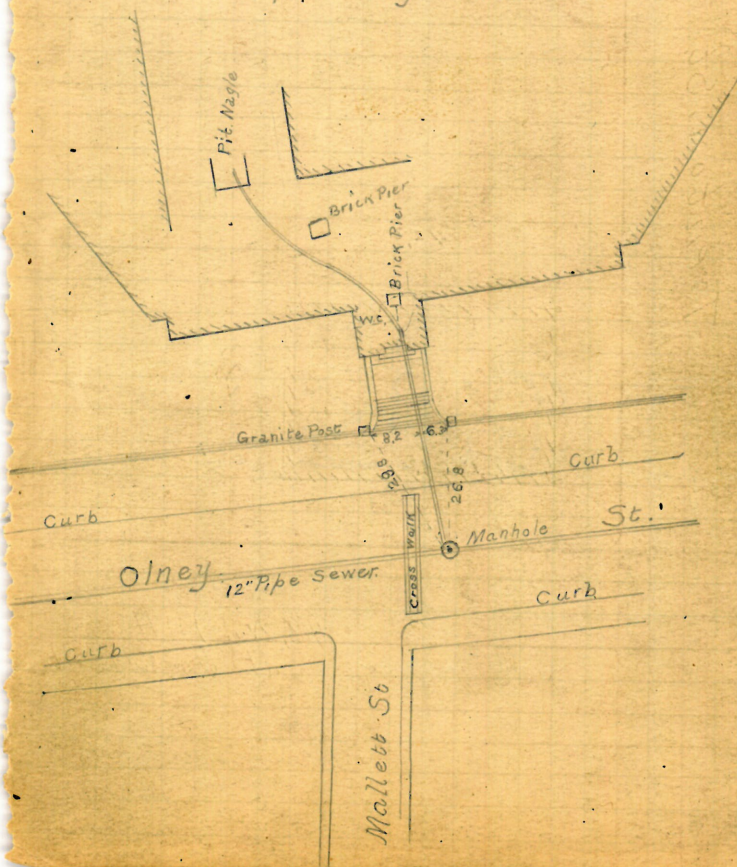
Cont 91





City of Providence
 Hope Station
 91 1/2 Olney St. S.E. cor Brown
 Allen Aldrich D.L.
 Permit 6-76
 V. Cent at least
 Opened July 7-1890
 Closed " 11-1890

Hope Eng. Station



102-104

827

Michael H Cronin
 Irco N W corner Trenton St.
 Bernard Brady D L
 permit 6762

Opened July 15-1890
 Closed " 16-1890

Reopened " 15 " 94

Closed " 15 " 94

Reopened Nov 7/

Closed " 8/34

Blank add

Reopened - Oct. 2, 1936

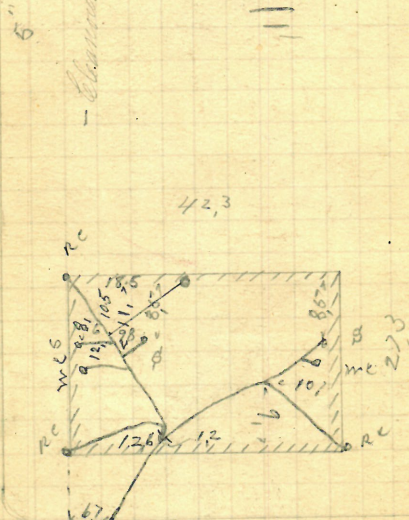
Closed - Oct. 6, 1936

A. Wood - Lower Drain

Plotted

Trenton St

Chambers well 1594



Storm Sewery

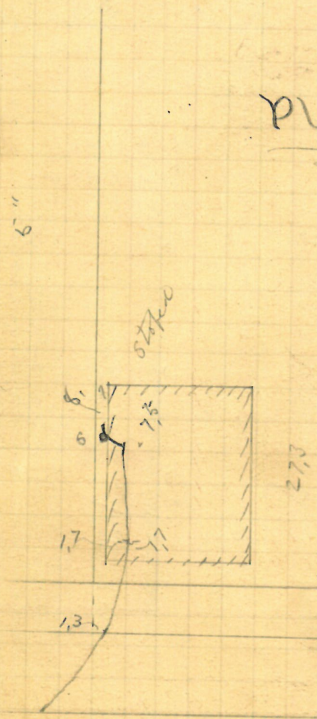
San. Sewery

48, N of MH

at Trenton St.

Thomas Goodacre
144 Grove St
Franklin D.C.
Permit 6-763
Sent at curb 10,3
Opened July 16-1890
Closed " 18-1890

Plotted.



628 rd of 17th H
" Knight St

210 3 ~~170~~ Brown University
Doyle Avenue
Anthony P. Barney D.L.
tent at East 8.

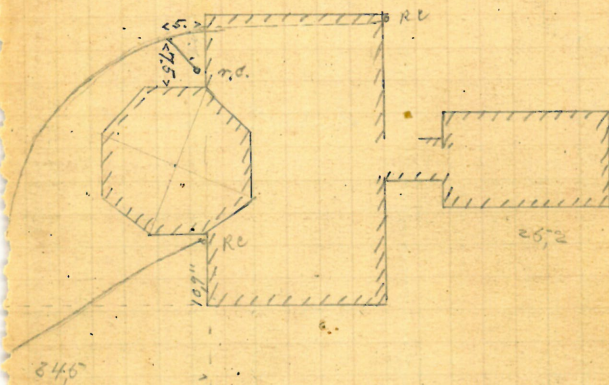
Permit 5-75-3.

Opened July 7 - 1890

Closed Aug 23 - 1890

Reopened Aug 21 - 1900

Closed " 22 - 1900 P.O. Connor D.L.



Plotted

45

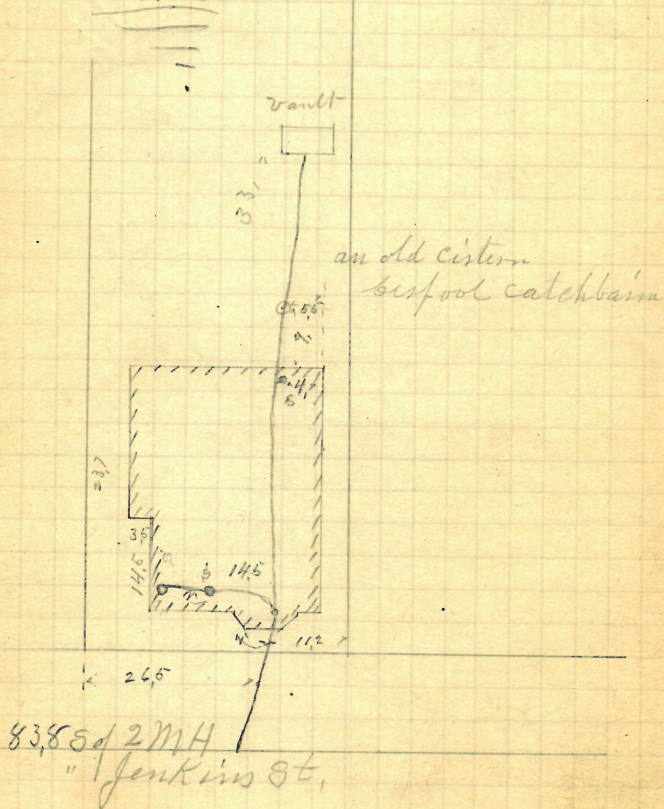
535

141.4 E of M H E of East Avenue

GONE

Patrick Morrin
 3 Western St.
 Jason A Blackmar D.C.
 Permit 5-765-
 V cut at curb 11,
 Opened July 17-1890
 Closed " 24-1890

Plotted.



2x50

Apr 7/30

Pg 88-90

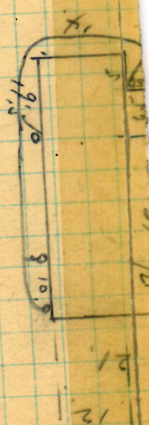
A. Raphael's Ex. Home School

Apr 15-30

Lions N.Y.

Reopened - Dec. 17, 1929
Closed - Dec. 19, 1929
H. Dwyer

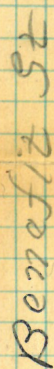
LE Page 535 Dwyer



July 3/31

Lockwood St. N.W.

M. Heron



Tockwotton St

46

P. 158
33

#112

James C Peck
Taylor St NW, 6th, Wesleyan Avenue

James C Peck D L

Permit 5-767

V Cont at Cont

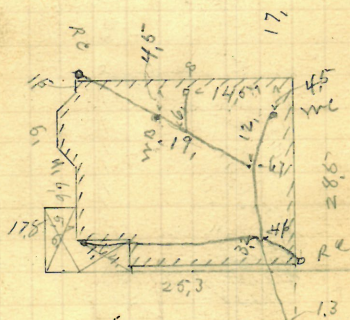
Opened July 17-1890

Closed " 19-1890

5"

Plotted:

Wesleyan Ave.



48

PLAN # 168

~~PLEASANT RIDGE 58 APTS~~

#

3-5

~~Bartholomew McElroy~~

Western St

John Keogh DZ

Permit 5-769

v. Out at curb

Opened July 21-1890

Closed " 23-1890

OPENED APRIL 1978

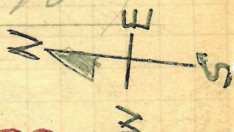
CLOSED APRIL 1978

D.L.J. DIFIORE

SEE BLUE PRINT 33

NEW BUILDING 521

INTO OLD CONN.



GONE



INTO OLD CONN.

313842 M/H

" Jenkins St.

306-311

Caleb Harrington
 Fountain S. W. Cor Cargill St
 Jason A Blackman D. L.
 Permit 5771
 Cost at least 102

Opened July 21-1890

Closed Aug 4-1890

Reopened Jan 8-1906

closed " 9-1906

B. B. Horton D. L.

Reopened Nov. 13-1923-

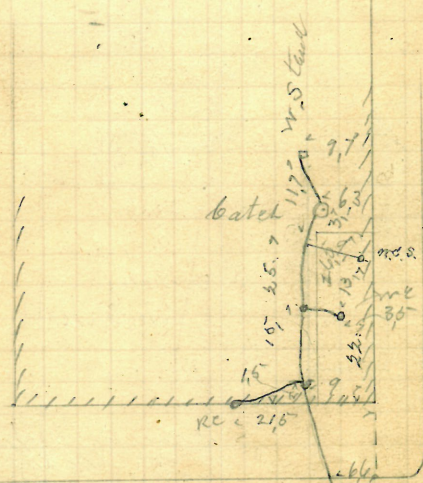
Closed " 20-1923-

J. A. Mahoney D. L.

Remar

Plotted

Cargill, St



35.5 W of M.H.
 at Cargill

52

REMOVED

The Tyler Sub of Court
 4? Naylor & W. Court Plains &
 Patrick Tierney & L.
 Permit 5-773

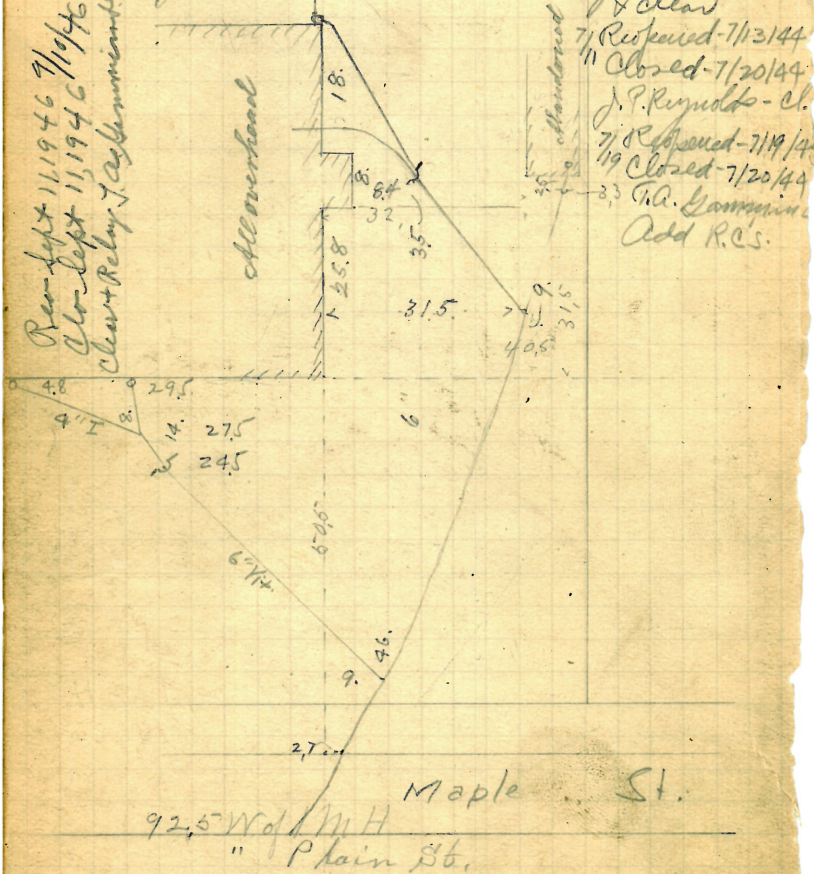
Opened July 21-1890
 Closed Aug 23-1890

Reopened Aug 14-1906
 Closed Aug 27-1906
 S. J. Tierney & L.

Reopened Aug 29 1940
 Closed Aug 21 1940
 M. McHally - Com. R.C.

Reopened 11/19/46
 Also Sept 11, 1946
 Clear + Reling J. Aslamman & Co.

Clear
 Reopened 7/13/44
 Closed 7/20/44
 J. P. Reynolds - Cl.
 Reopened 7/19/44
 Closed 7/20/44
 G. A. Sammons
 Add R.C.S.



30025 310

53

George E B Fairbanks & Wife
 Wickenden N E Cor 43 Hope St
 Dennis J McCarthy D.L.
 Permit 6-774

Cent at curb 9.3

Opened July 22-1890

Closed " 28-1890

Reopened & closed July 28 97 - H.E. Sherman D.L.

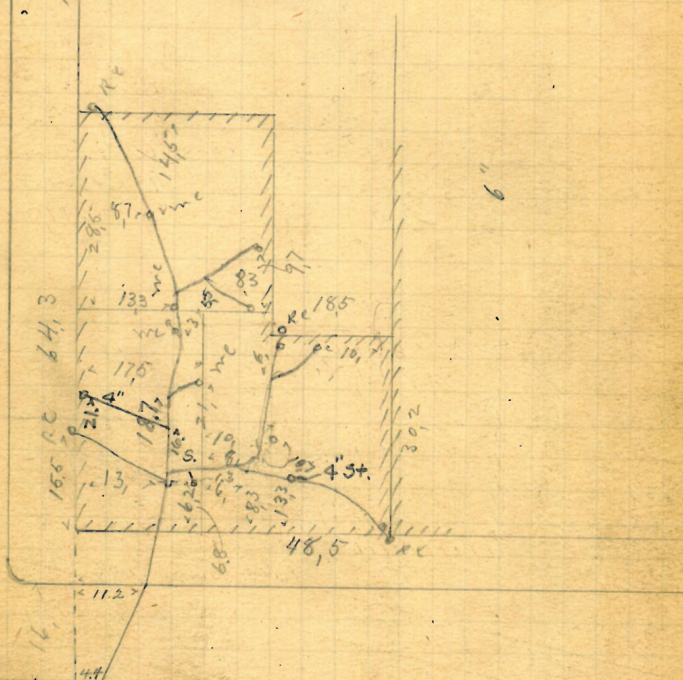
Reopened & closed May 27-28-1903 - W.D. Chadsey D.L.

4/ Reopened - May 2, 1936

12/ Closed - May 5, 1936

A. Martel Add 2'-4" stacks

Hope St.



Wickenden Street

Enter Sewer 41.2 East of Man Hole
 in Hope Street

Manuel J. G. Drio
 15-2-15-4 Knight St. 2487
 J. Frank Read & L
 Permit 5-775

Opened July 24-1890
 Closed 26-1890
 Cut at curb 102

Reopened Oct. 27-1924
 Closed Dec. 2-1924
 H. S. Graham & L.

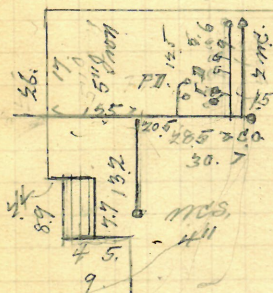
34.8 30.8 20.8

Plotted
 Reopened Oct. 17-1925
 Closed 11-18-1925
 H. S. Graham & L.

See remarks to 24

Sheet No 90

See BK 2429 Pg 77
 60.8



Knight Street

613

491

354

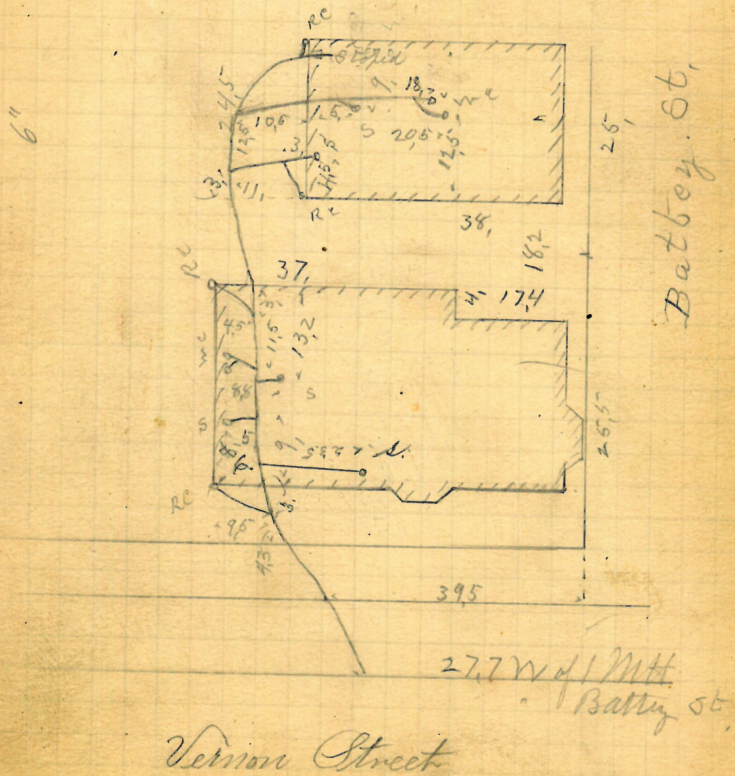
725

Bell Street

78.8 of M. Hat Bell St.

Lorenz Stone
 Vernon N W ⁵⁴⁻⁵⁶ Battery St
 Jason A Blackmar D.L.
 Permit 5-776
 V Cent at curb 10.5
 Opened July 24-1890
 Closed Aug 8-1890
 Reopened May 21-1897
 Closed " 22-1897
 H. C. Chadwick D. L.

Plotted.



5778 Feb 14-17
The Textile Finishing Co.
Rocknotter, St.

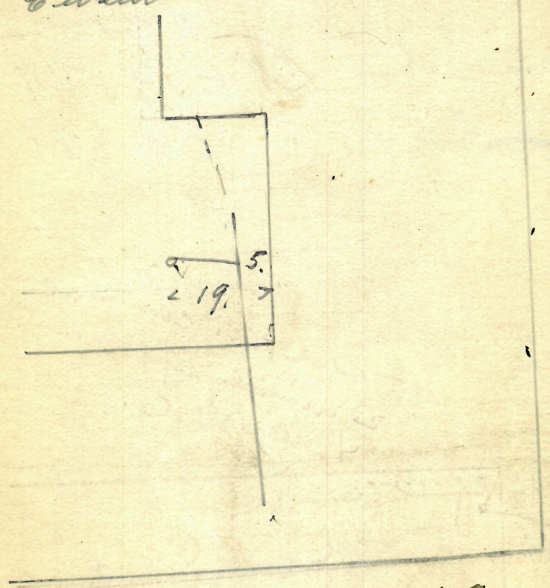
opened Roe
Feb. 19 17.
closed " 20 17

two old Ws. coming out
2 animals replacing the
4 new W. & C.

Siebert
Trap. old
old sink

729
57V

Cf. 5778 Dec. 28-1916
 Reptile Finishing work Co.
 Journal of the N. H. Co. Traversed.
 J. E. Manney D. L.
 Reopened Dec. 28-1916
 & closed " 28-1916



729
 57 ✓

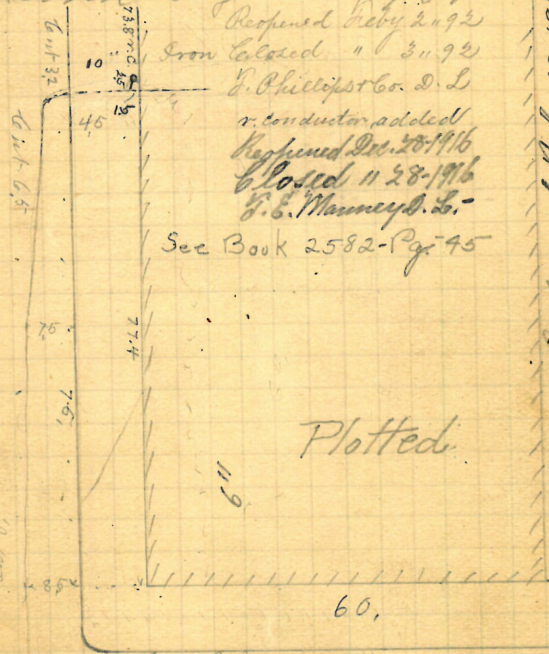
REMOVED

George R Phillips
Hockmorton N.W. Co. D.L. Traverse
Thos Phillips & Co D.L.
Permit 5778

✓
Cut at curb
Opened July 24 - 1890
Closed Aug 2 - 1890

Reopened Feb 29 92
Iron Calced " 30 92
D. Phillips & Co. D.L.
r. conductor added
Reopened Dec 20 1916
Closed " 28 1916
F. S. Mearns & Co.
See Book 2582 - Pg 45

Reopened Feb 19-1917
Closed " 20-1917
F. S. Mearns & Co.



Reopened July 27, 1931
Closed July 28
J. A. Gammis & Co. Traverse St.
Reopened - Jan 13, 1934
Closed - Jan 13, 1934
J. A. Gammis - clear up Sur

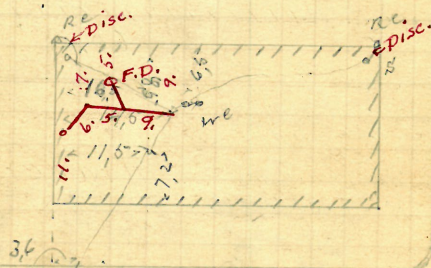
112 W of 1st St
Ed Draven, Hockmorton, N.W. Co. D.L.

Alphens & Snow
 With Barth's Guardian
 S. E. Co. Hospital & Elm St.
 Perms 5-7-79
 Opened July 25-1890
 Closed " 31-1890

Bernard Brady D.L.

Reopened 1/25/60
 Closed 1/25/60.
 D.L.L. Velletri
 Add Stack & F. Drain.

Plotted



ELM ST.

46.5 W of 2nd H

at Parsonage St.

Hospital St.

Charles Green Frost
 Grove & E. Co. Courtland
 John W. Briggs D.L.
 Patent 5-780
 V. Grant-ent 104"
 Opened July 26 - 1890
 Closed " 29 - 1890

Courtland St.

Plotted.



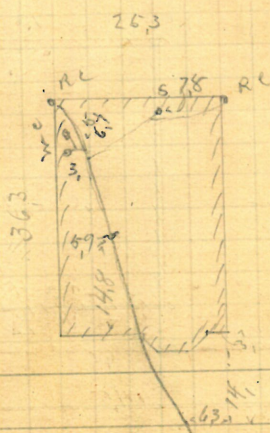
Enter M H
 E of Courtland St.

P 157
18

61

19 ~~188~~ Felipe H. Pryor & Wife
Pearl St
Bernard Brady DZ
Permit 5782
Cut at Curt 10.5
Opened July 30-1890
Closed " 31-1890

Plotted



188, w of 17th
Plaint

GONE

Ex 5792 Dec 1, 1933

Parham, D. Charles Ave
179-181 Doyle Ave
(418 Hope St.)

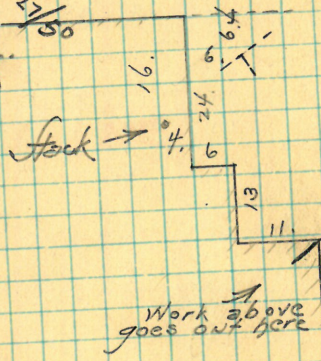
Proposed - Dec 1, 1933 The Nalley D
Closed - Dec 1, 1933

Reop. 10- - 20

Clos. 10- - 50 ^{22/50}

C. Para. D.L.

Relay Iron



$\frac{729}{71}$

Hope St.

This is a copy of return filed by
Inspector.

Closed " 18-1709
D. Holmes & Co. -

Collected 6 10-1900
J. F. Read, D. So.

23 /

Jacob W. orth

1275 - West Exchange St.

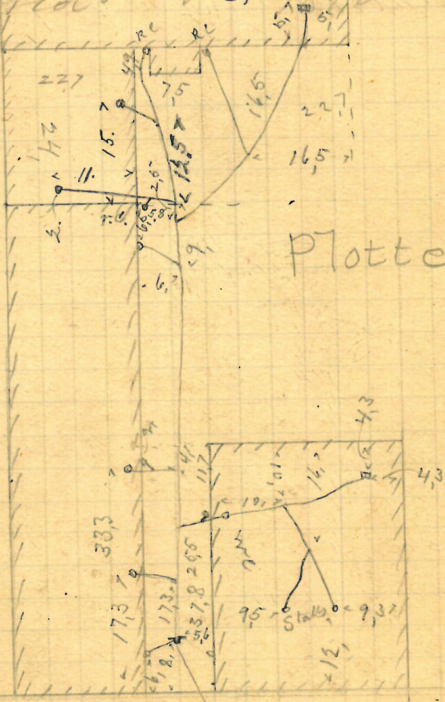
John Knogh D.D.

Permit, 5784

Cont at curb 10.3"

Obtained July 28-1896

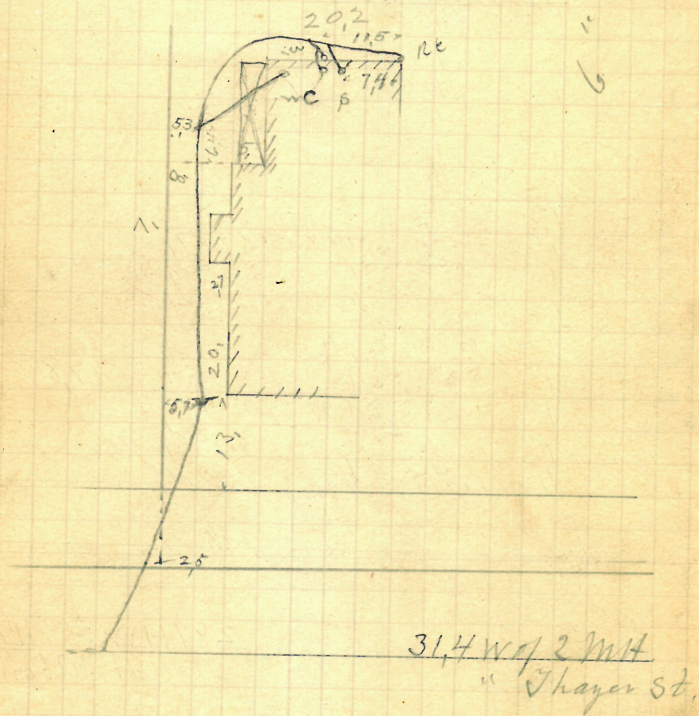
expired July 28 1890
 expired " 31 - 1890



289.4W of M.H.
at Aborn St

Cordelia B Spellman & others
 95 Waterman St
 Jason A Blackmar & D
 Permit 5-785-
 V Cent at Const 9.9
 Opened July 28-1890
 Alford and 6-1890

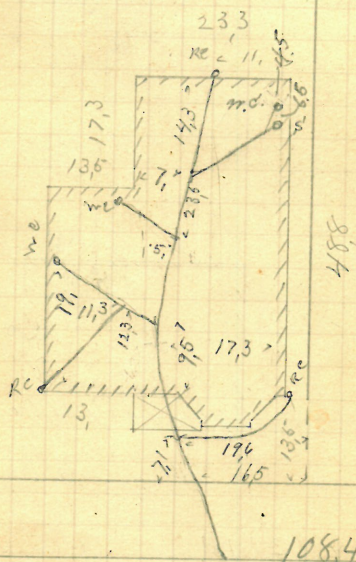
Plotted:



Opened Aug 4-1890
Closed Sept 4-1890
Reopened Sept 8-1919- Reopened Jan 17-1920
Closed " 11-1919- Closed " 1920
J. E. Bradshaw & Co. - Photo & L. - Clemons

Reo. 4/17/64 Closed 4/21/64 D.L.L. Maglione (Remove Trap Disc. R. Condt.

Plotted.



108.4 wd / mH

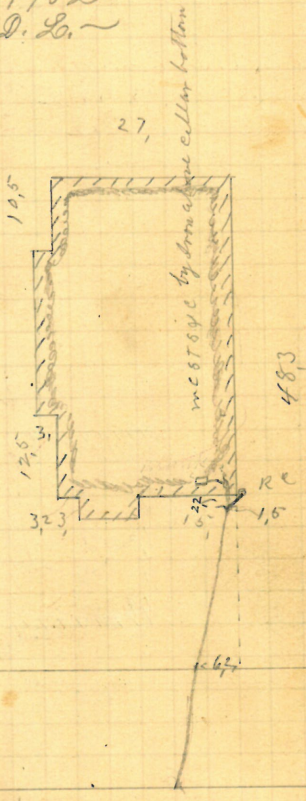
"Knight St

206
 Hattie D. Kearney
 644 Doyle Avenue
 John Knight Dr.
 Permit 6-788
 V Cut at curb 8.3
 Opened Aug 4-1890
 Closed " 6-1890
 Reopened May 7-1902
 Closed " 12-1902
 M.W. Colgrove D. Co. ~

Plotted

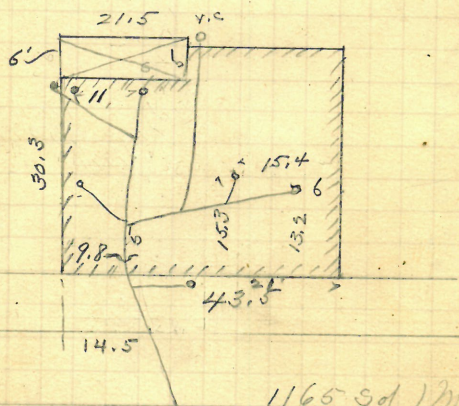
Oct. 10/50

Keop. Oct. 24/50
 Clar. Oct. 25/50
 W.B. Rider D.L.
 Clear. Rem. Trap Rely
 4" I Open Side Wall



117, 8 of 1 M H
 " ~~Kearney~~ St.
 Hope St.

138-140 *Benj B Edmonds*
~~84~~ *Almy 86*
J Frank Reed D.L.
Permit 8-789
V Cut at crest 10.3
Opened Aug 4-1890
Closed 5-1890
Reopened in Sept. '91, by B Brady
Reopened Sept. 26-1912
Oct. 1-1912
M. Gammino D.L. P. 2000.
Reopened Sept. 28-1912
Closed Oct. 1-1912
J. Messinger D.L.



116.5 sq ft
 or Permit 86

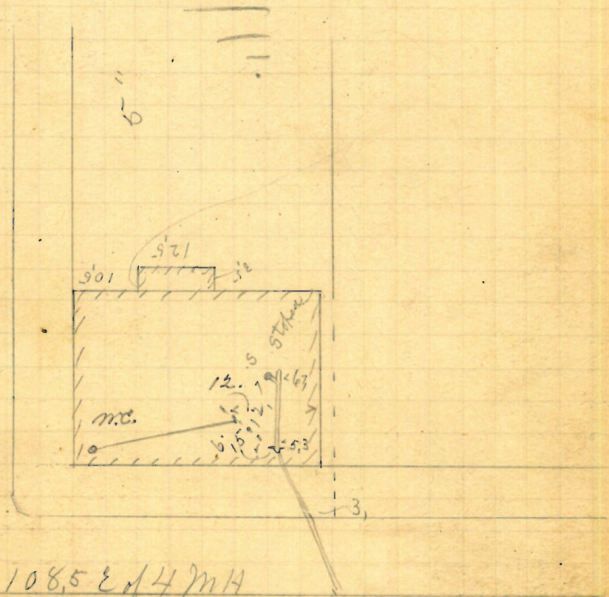
Benj B Edmonds
 Corner SW Cor #90 Army St
 Frank Road 27
 Perpet 3-790
 Cut at curb 10.3

Opened Aug 1 - 1890
 Closed " 2 - 1890

Opened in Sept 91 by B. Brady
 Reopened Feb 23-1911 - Reopened Aug 8-1922
 Closed " 24-1911 - Closed " 1922
 J. Catr D. L. - J. Barbard D. L. - Lower

Plotted

Army St.



108.5 E of 4 MH
 " Ridge St.

Penn Street

John Doran
116 1/8 Doyle Avenue
John Keogh D. L.
Permit 5791

cut at curb 10.5

Opened Aug 7-1890

Closed 11-7-1890

wash stand



Reopened April 11-1904

Closed 11-12-1904

A. Biello D. L.

Reopened Feb 24-1910

Closed 11-24-1910

A. Biello D. L. - Plumber

Connects with old work

5"

94.5 ft to scale

2.5

2.01

3

1.57

1.5

Plotted

89.5 of 3 M 14
Camp 01

GONE

71

Geo R Violl Larver
 19-181 145-147 Doyle Ave
 John Keogh D.L.
 Permit 5792
 V Cent at curb 10.4"
 Opened Aug 4-1890
 Closed " 7-1890

Revised & added to by W. J. Logg June 5-8/91
Plotted.

Reopened Nov. 4-1914
 Closed 1914
 A. Killo D.L. Cleanout.

Connect with old works

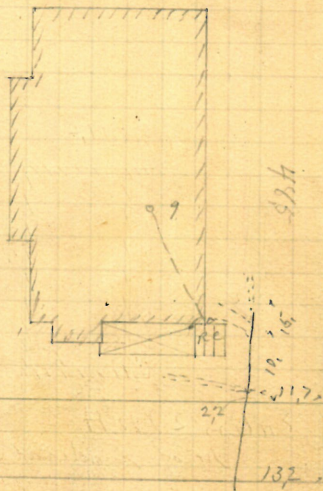
5" pipe

Closed Sept 3-1911
 W. J. Logg D.L. Repair & Relay -

Reopened June 12, 1929
 Closed June 13, 1929
 A. Madue D.L. Clean
 opened - Dec 1, 1933
 Closed - Dec 1, 1933
 W. J. Nally - Clear

Reopened " 22-1912
 A. Killo D.L. - Clear -

Reopened Oct. 2, 1931
 Closed " 5 "
 A. Madue D.L.



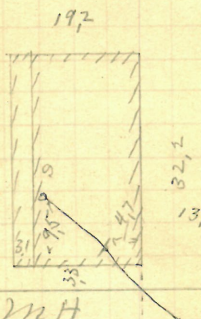
Reopened Dec 5, 1949
 Closed Dec 6, 1949
 Clear of L. & Butler P.D.

65.1 Ex 5' M. H.
 Camp St

Placido Cardullo
 23 Wieden St
 Bernard Brady D L
 Permit 5-7-93
 ✓ Cent at Cent
 Opened Aug 5-1890
 Closed " 6-1890

Plotted.

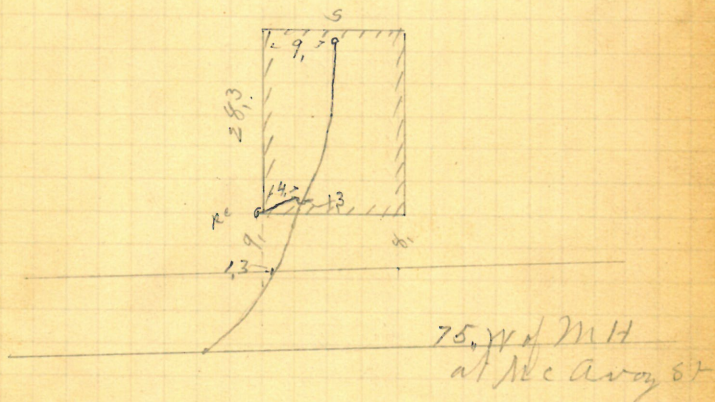
6"



Enter 2224
 N of Federal St

Leander R Peck
 500 - West Exchange St
 James P Millard & L
 Permit 5-774
 V Ent at curb 10.5
 Opened Aug 5-1890
 Closed " 7-1890

Plotted



Anna Bell Grant
 158 + 28 203rd Avenue
 John Knogh D.L.
 Permitted 6-7-96
 V Cut at knob 10,3
 Opened Aug 7 - 1890
 Closed " 8 - 1890
 Reopened & closed Jan 22 - 1900
 W. J. Knogh D.L. Cleanout -

Plotted.

Connects with old work



2.6 E of 4 Mt
 " Camp St.

John Grant
130 - 132 Doyle Avenue
John Keogh D.L.

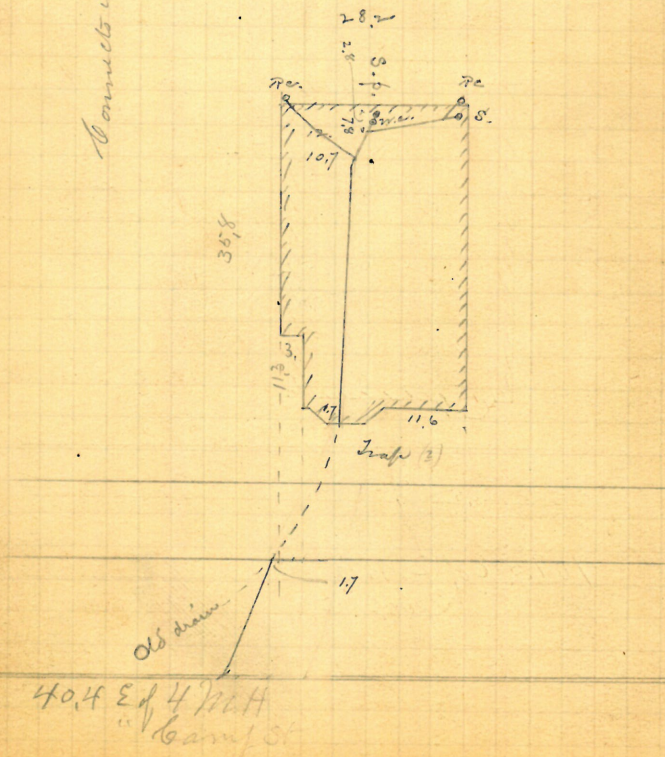
Permit 5-796
V cut at knob 10.2

Opened Aug 7-1890
Closed " 9-1890

Reopened May 18/91, to clean & relay
Closed " 19 " J.K. Keogh, D.L.

Connects with old work

6" Plotted Since changed

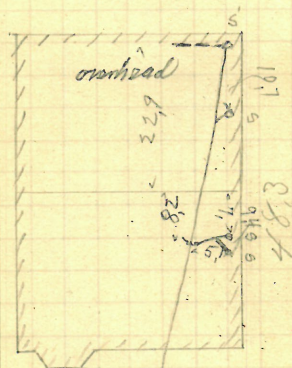


Helen Fisk
 147 Grove St.
 J Frank Read, D.L.
 Permit 5-797
 V. Ant at length 10.4
 Opened Aug 5-1890
 Closed " 7-1890

Reopened July 18-1925
 Closed " 19-1925
 E. E. Riccardelli, D.L.

Plotted.

5"

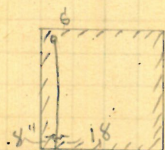


109.5 E of 2.25
 " 20.5 St.

Estate Seth Padelford
 53 Benevolent St
 Jason A Blackmar D Z
 Permit 5798

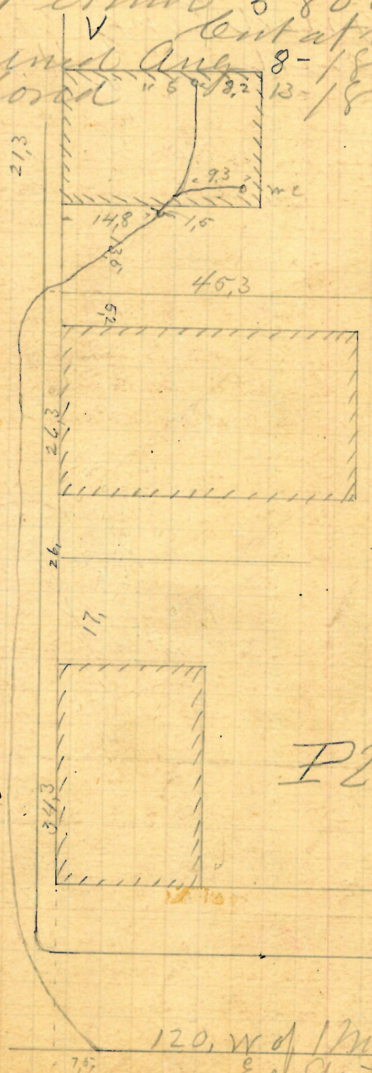
✓ Cut at curb 10.9
 Opened Aug 7-1890
 Closed " 9-1890

Plotted.



102.6 W of 1 M H
 " Thayer St

Ruth W. Searle
 5- Bond St.
 Federal St. Sewer
 & Frank Road D.L.
 Permit 5-800
 Cent at curb 7.5
 Opened Aug. 8-1890
 Closed 13-1890



Plotted.

Federal St.

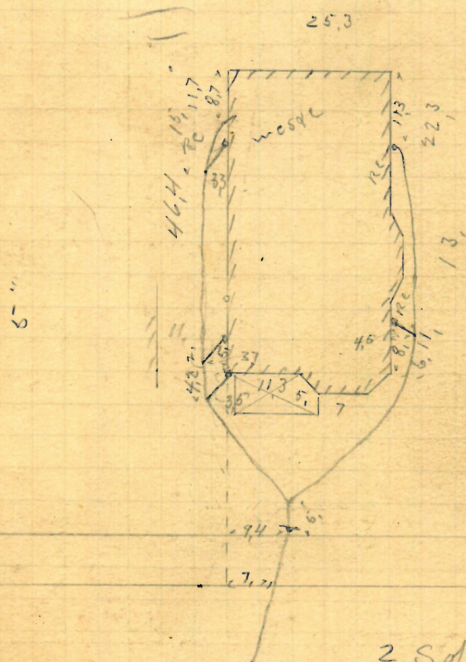
5/1 opened - May 4, 1963
 13 closed - May 5, 1943
 Bond, St. Margaret D. St.

P. - $\frac{158}{33}$

81

Isabel West Wife of Herbert
6-8- Taylor St
Jason A Blackman DL
Permit 5802
V Cut at Const 10;
Opened Aug 11-1890
Closed " 28-1890

Plotted



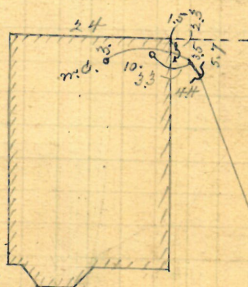
2. S of 2 M H
" Comstock Ave

157 Linda Booth Lussu
 119 Doyle Ave
 John T. Logg D. L.
 Permit 5-804
 Cent at curb 10.2
 Opened Aug 9-1890
 Closed " 13-1890
 Reopened Nov. 6 " 95
 Closed " 7 " 95 J. M. Keon D. L.

Plotted.

8"

A measurement given
 on books found it
 24' wide in place



1624 E of 3rd H
 " Camp 86

37-41 Anson H. Patter
72 Pearl N.W. Cor. Marlborough St
76 Jason A. Blackmar D.C.
Piermont, 5806

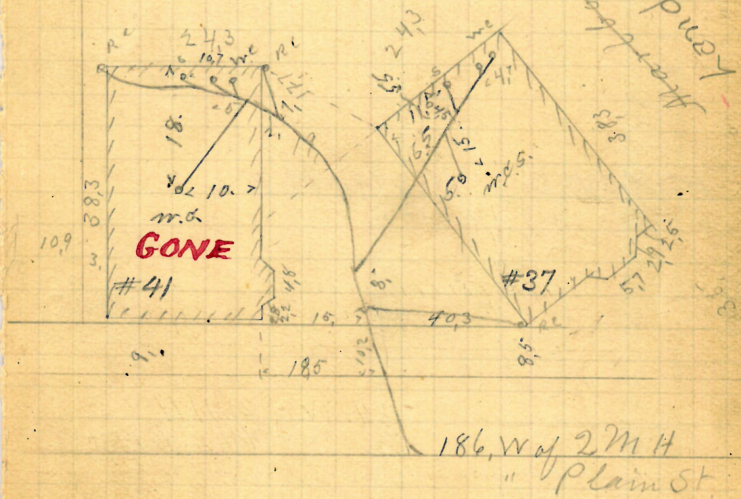
Out at curb. 11.4"
 Opened Aug 12-1890
 Closed " 14-1890
 Reopened Dec. 3-1909-
 Closed " 4-1909-
 A. W. Colgrove D. L. -
 Reopened Nov. 25-1932

Plotted.

Reopened Nov. 21-1932
Closed " 21-1932
C. G. Riccietelli, L.
Reopened Sept. 6, 1934
Closed - Nov. 6, 1934
P. W. Talt. Clear

Received Sept 11th 1929

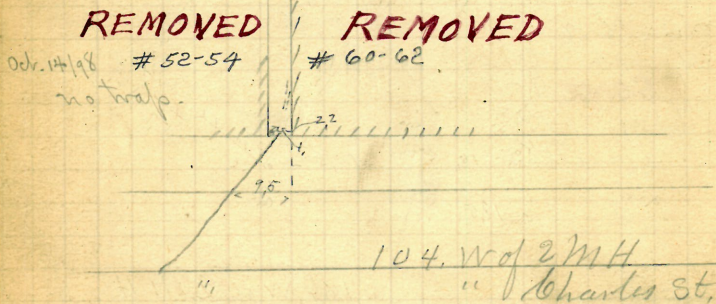
Wally D. H. Clean-



58-60

Max Feldman & Wife
 30-Charleston Ave
 J Frank Read D.L.
 Permit 5807 ^{2.8}
 V Out at curb 10.7
 Opened Aug 12-1890
 Closed " 13-1890
 Reopened Oct 19-1907
 to Eleventh by A. Hillard, Jr.

Plotted.



Expt. James Eddy
 Grove St. Lumber Co. D. L.
 Permit 5809
 V

Opened Aug 25-1890
 Closed Sept 18-1890
 Reopened Nov. 12-1919
 Closed " 12-1919
 D. H. Hurdle D. L.

Part Plotted.

See Pages 89-90.

Expt. James Eddy
 Grove St. Lumber Co. D. L.
 Permit 5809
 Reopened - Sept 26/1932
 Closed - Sept 29/1932
 Stable, J. Moore Jr.

Reopened - Apr. 20, 1937
 Closed - Apr. 20, 1937
 M. on: Mally-clear trap

Tab. ex. St.
 Reopened Dec. 16/1929
 Closed
 White Lk



Plot Ex. Hurdle Aug. 8-1911
 See Book 1094 Pg. 66
 Permit No. 11372

Enter 24th at
 Grove St.

Reopened - Sept 27, 1939
 Closed - Oct 6, 1939

Juliet L Seymour
79-81 Camp St

79-81-Camp 860

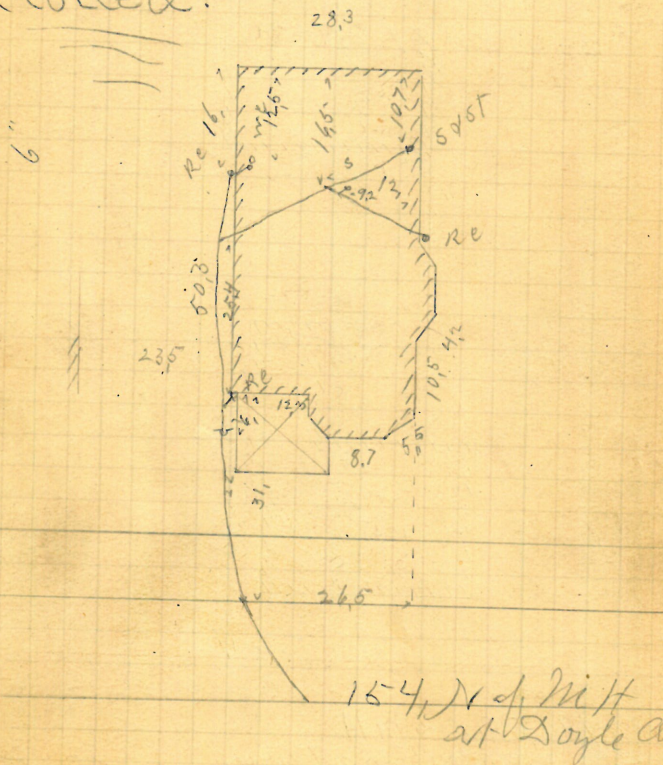
J Frank Riad D.L.
Permit 1-819

Permit 5-810

Opened Aug 18-1890
Closed " 29-1890

Closed " 29-1890

Plotted.



GONE

ONE
Nathaniel Cole

101 ~~75~~ Jobery 86.

11 ~~15~~ Tobey 86.
Frank Read D.L.
Permit, 6-811

Permit 6-811

✓ Cut at least 10,

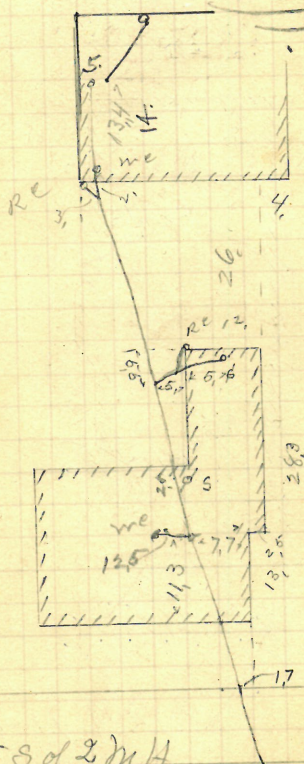
Opened Aug 14 - 1896

18-1890

Reopened - Nov 12, 1934

Closed - Nov 13. 1934

P. Barbarita - add "I. Plotted.



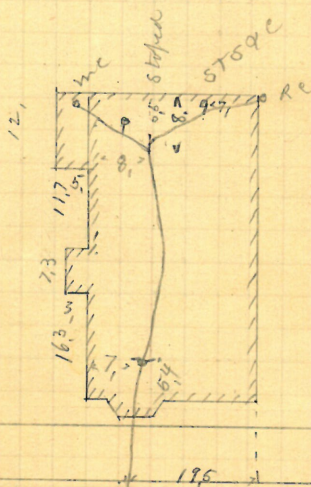
1835-8 of L.M.H.

" Broadway

97 Nathaniel Cole
 77 Tobey St.
 Frank Read & L.
 Perm 6-8/2
 V
 Opened Aug 15-1890
 Closed " 18-1890

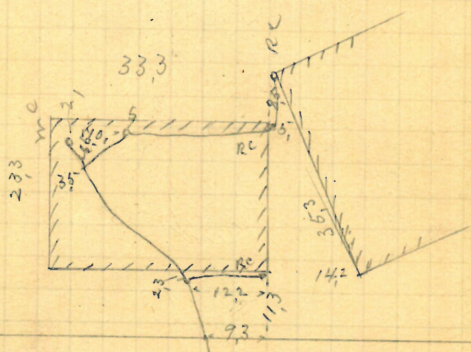
Reopened - Apr. 1, 1935
 Closed - Apr. 1, 1935
 Wm. Whitaker - add 4" Stack

Plotted.



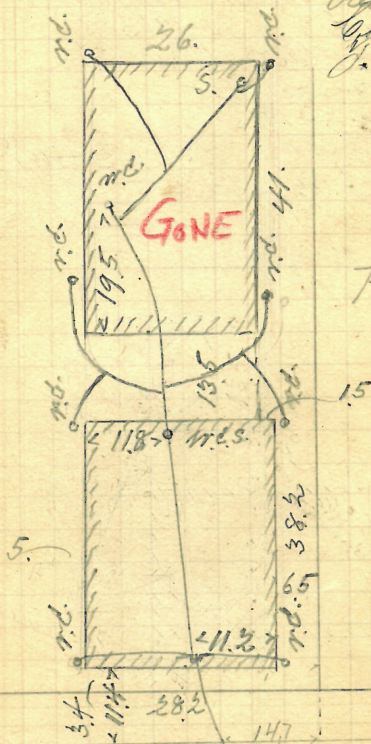
163.5 s of 2 MH
 " Broadway

+284 James Brady
 33 Dean St
 Bernard Brady D.L.
 Permit 5-814
 V Bent at curb 10.5
 Opened Aug 19-1890
 Closed " 20-1890
 Reopened Dec. 9-1913
 Closed " 10-1913 5" pipe
 M. Leonard D. S. Cleamout
 Reopened - Mar. 24, 1938
 Closed - Mar. 25, 1938
 R. Bertini - Clear
 Reopened - Oct. 29, 1943
 Closed - Oct. 30, 1943
 P. Mangione - Cl. - of sidewalk.



58.5 x 1 MH
 " Fountain St

Clara M. Pearson
 90 5² Ring St.
 Jason A. Blackman
 permit 5-8-16
 ✓ tent at curb
 Opened Aug 15-1890
 Closed " 19-1890
 Reopened Sept. 6-19
 Closed " 9-19
 J. A. Pearson



Plotted

9.7 E of 4 M4
 " Foley St.

GONE

97

Alfred Z Horton

164 Penn St

Jason A Blackmar D L

Permit 5816

cut at curb 10.5

Opened Aug 19-1890

Closed Sept 6-1890

Reopened & closed Sep 21-1908

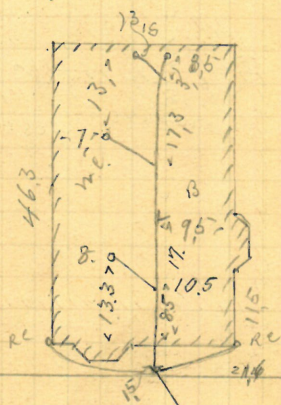
W. J. Chubb D. L.

Reopened - Sept. 1, 1940

Closed - Sept. 1, 1940

R. Mangione Ch. of sides.

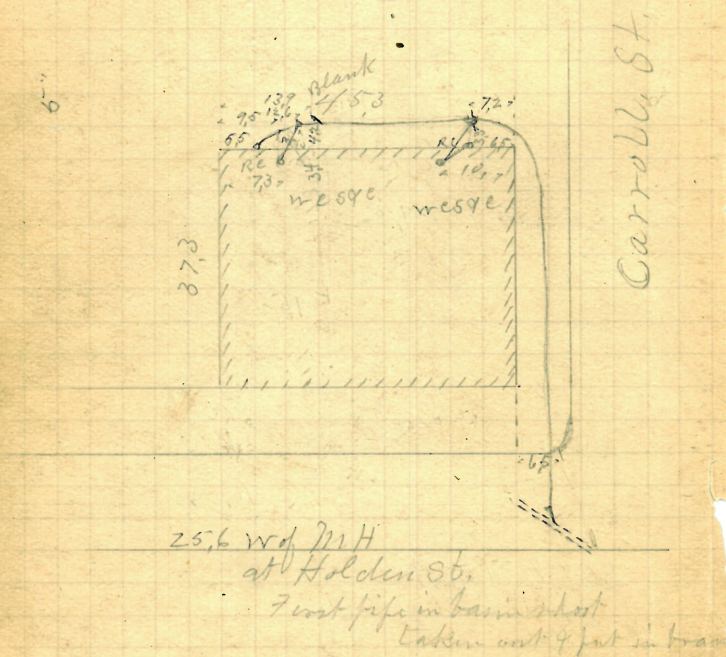
Plotted.



85.8 E of M H
Ridge St,

Howard M Whipple
 195-201 Smith St. Carroll St.
 Jason A Blackmar D.D.
 Permit 5817
 V Cent at curb?
 Opened Aug 18-1890
 Closed " 26-1890

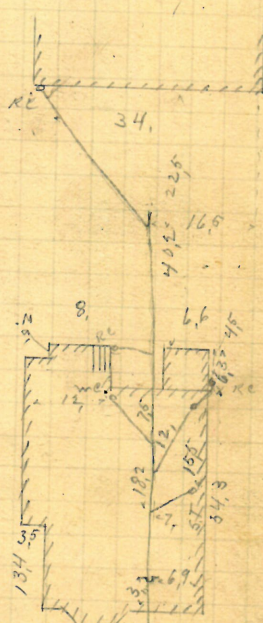
Plotted.



#23 William L. Waite
 15 Dartmouth Avenue
 John W. Briggs D.L.
 Permit 5818

Opened Aug 18-1890
 Closed " 21-1890

Plotted



119.9 w of 2nd A
 " Broad St.

00

100

Eliza R. Goodrich
 178 Union N. E. cor 6th Vernon
 Jason A. Blackmar D.L.
 Permit 5-8-19

cut at curb 10.

Opened Aug 21-1890
 Closed " 26-1890

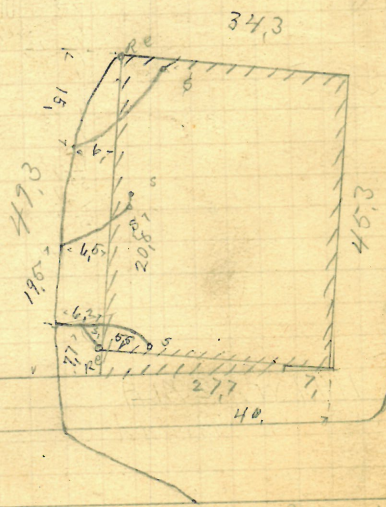
Opened Aug 12-1893

Closed Aug 12-1893

Ed. M. Goodrich D.L.

Plotted.

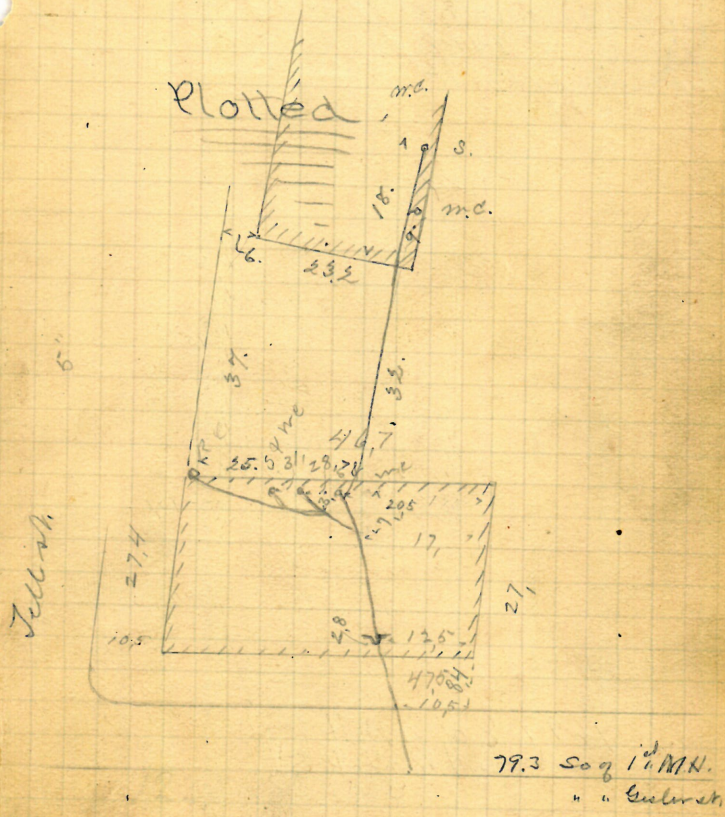
Cart of Eliza R. Goodrich
 in paper substituted



Vernon St.

5-8-8 N of M. H. B. Co.

53
 Thomas Lyons
 Knight St N W Cor #49 Yell St
 Bernard Bracy D.L.
 per me 5820
 Cut at curb 10.
 Opened Aug 22 - 1890
 Closed " 25 - 1890
 Reopened Feb. 16 - 1900
 Closed " 17 - 1900
 H. M. Goldrick D.L. -



Heirs Rhoda A Benson
 J B Gardiner Adm'r
 74 John St.
 J Frank Read D.L.
 Permit 5-821

✓ Tent at curb 10.3
 Opened Aug 26-1890
 Closed " 26-1890

Extended by H.P. Chadsey

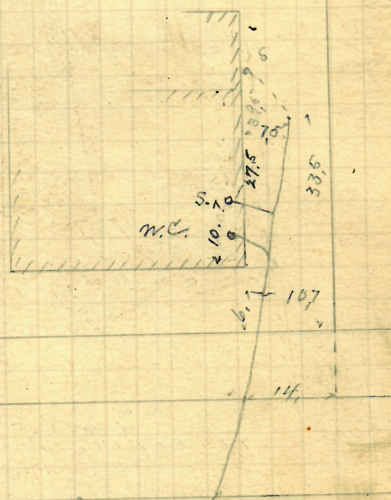
May 31, 1893.

Resurveyed May 6-1918

Closed " 7-1918

J. P. Birney D.L.-

Plotted



168.7 E of 2nd Mt
 " Brook St.

4136

136 Benjamin Nichols
80 # Mrs. A. W. Cor. Penn.

80 ~~Almy NW Cor~~ ^{Genam Nichols} ~~River~~

J. A. Blackmar D.D.
P.O. No. 15833

Permit 5823

Opened Aug 26-1890
Closed " 30-1890

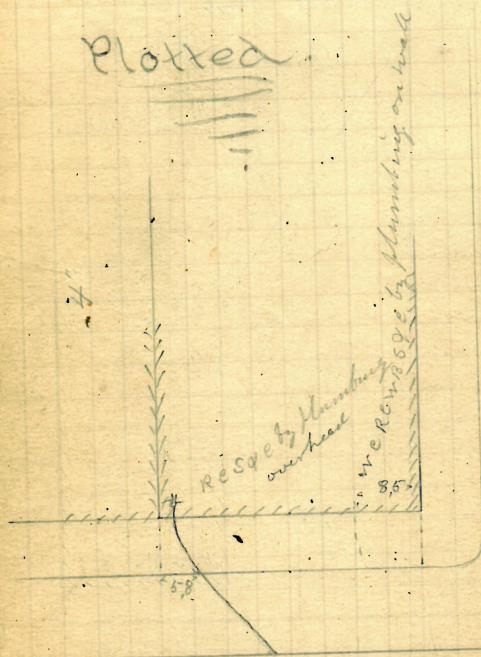
Chlorid " 30-1890



William H Williams
 97-99 Washington W. Cor. Mathew
 Bernhard Brady & L.
 Perimeter 5823
 Cut at curb
 Opened Aug 25-1890
 Closed " 26-1890
 Reopened " " 27-1890 by Brady

Su. NB 311 P 169

Plotted



Mathewson St.

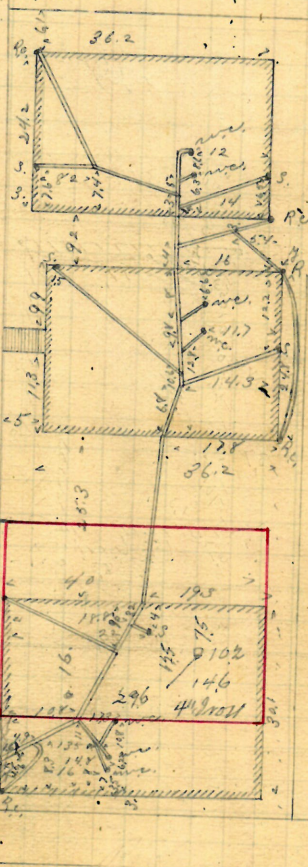
20. W. of W. B. Line

James M. Concoran
 71 Valley St S E Cor School St.
 Bernard Brady D.L.
 Permit 6824

cut at curb 8.2
 Opened Aug 26-1890
 Closed " 28-1890

Reopened June 18. 93.
 Closed June 20. 93

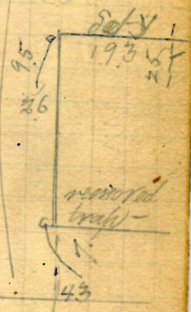
B. Swift D.L.



Plotted

6" paper
 Reopened Oct. 10-1924
 Closed " 11-10-1924
 W. Richardson D.L.
 Diagrams Reopened
 4. York
 Oct. 5-1923

1898 - Home was destroyed
 by fire & Plotted Jan. 28-1898
 by B. Swift D.L.
 507200 L. St. - Reopened Oct. 5-1923
 Closed " 6-1923
 J. J. Morrison D.L.



Reopened Nov. 10-1924
 Closed " 11-10-1924
 W. Richardson D.L.
 177 S 4th St
 12th St

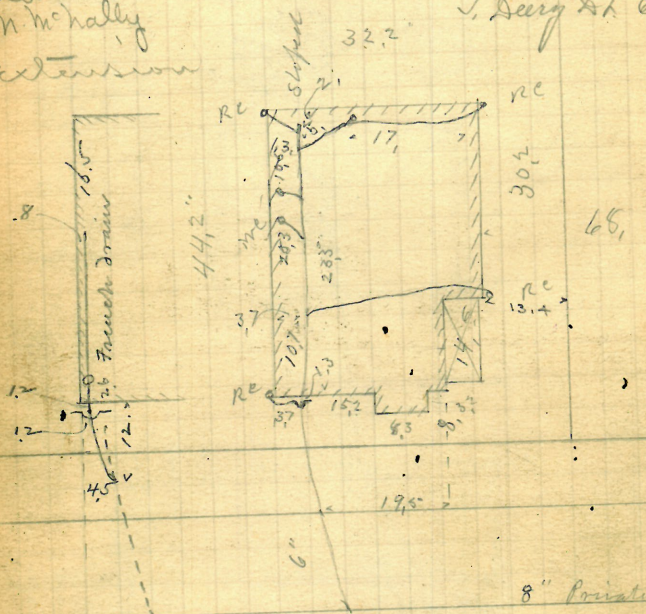
South 1st St
 12th St
 Delaine St.

George F. Glasse
 213-215 # 103 Pleasant St.
 J. Frank Read D.L.
 Permit 5-825
 Cut at Curb 7,
 Opened Aug 29-1890
 Closed Sept 6-1890

Reopened Apr. 8/91, to put in French drain.
 Closed " 9 " J. F. Read D.L.
~~P.H. Cassidy D.L.~~

Reopened Mar 16, 1933
 Closed Mar 16, 1933
 McHally
 extension

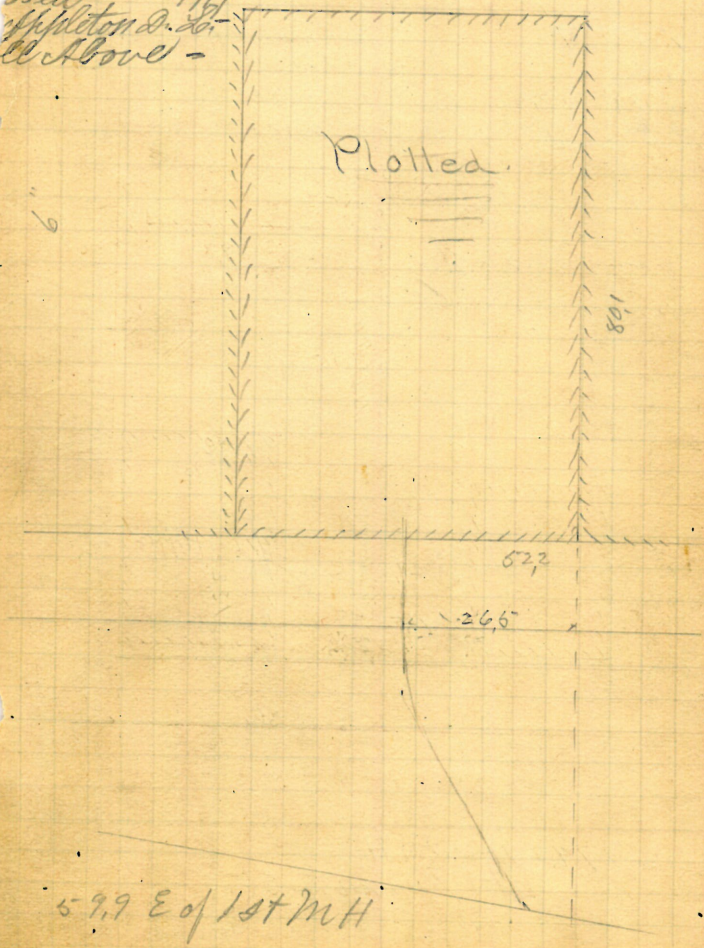
Reopened Dec. 4/29
 Closed " "
 T. Dery & L. Chan



Platted

Rhode Island Hospital Trust Co
 7 - 15 Westminster St.
 Thomas Phillips & Co S.L.
 Permit 5826
 Opened Sept 1 - 1890
 Closed Oct 7 - 1890

opened 1917
 closed 1917
 Phillips & Co.
 all above -



~~Removed~~

551 The Lytle School Corp
 Plain St N W Cor 122nd Point 8
 John Keogh D. L.
 Permit 5829

✓ but at least 10.
 Opened Sept 3-1890
 Closed " 4-1890

Reopened July 27-1921 Reopened July 5-1927
 Closed " 27-1921 Closed " 7-1927

G. Gibbons D. L.

G. J. Dorman D. L.

8/ Reopened Aug 21, 1940

Elmer & Hiram H. H.

20 Closed Aug 21, 1940

M. M. Mally Clear

Plotted.

Point 86

53,

325

20.

? 10.

H. N. of M. H.
 at South St

Catharine Callanan

76 Jolin St.

Frank Read D.L.

Permit 5880

V

Cut at curb 10.

Opened Sept 8-1890

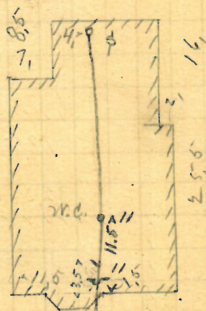
Closed " 8-1890

Reopened Oct. 4-1893

Closed Oct. 4-1893

Geo. D. Lewis D.L.

6"

Plotted1235 Jrd M.H.
at Angle

GONE

George Chatterton
32 Randall St.
John Keogh D.L.
Permit 5831
Sub 40

Cont of Comb 9.2

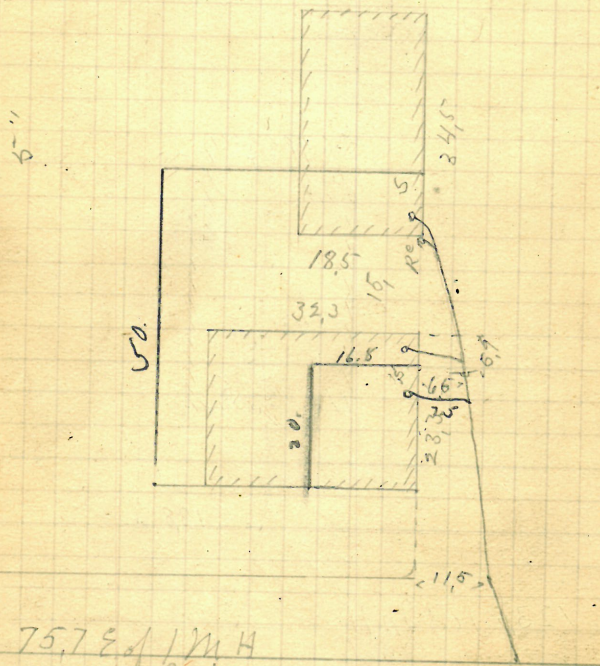
Opened Sept 6-1890
Closed " 8-1890

Ok Road 8-1890

Received Apr. 5, 1932

Cliveden

Plotted. J. Shanley Jr.



75.7 $\text{E} \cdot \text{A} / \text{M} \cdot \text{H}$

" Bridge

11-113

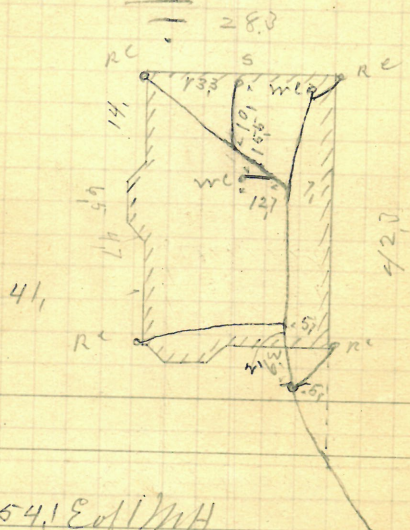
Eliza H Beck
77- Pleasant St.
John Knapp D.D.
Permit 5833.

Opened Sept 9-1890
Closed 11-1890

Reo. 12/9/63 Closed 12/9/63

D. L. R. Trotter (clear)

Plotted.

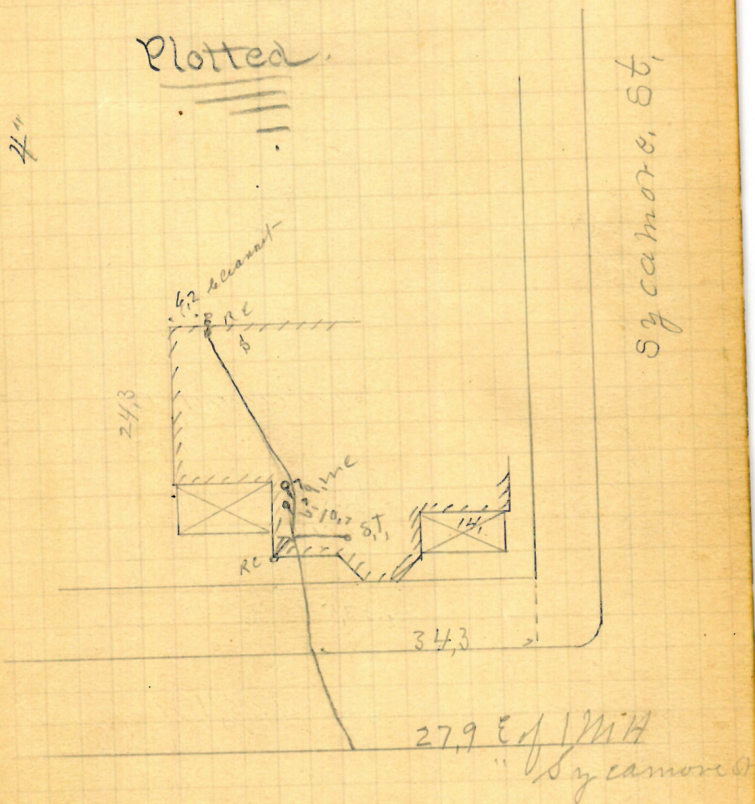


154.1 Eol MH

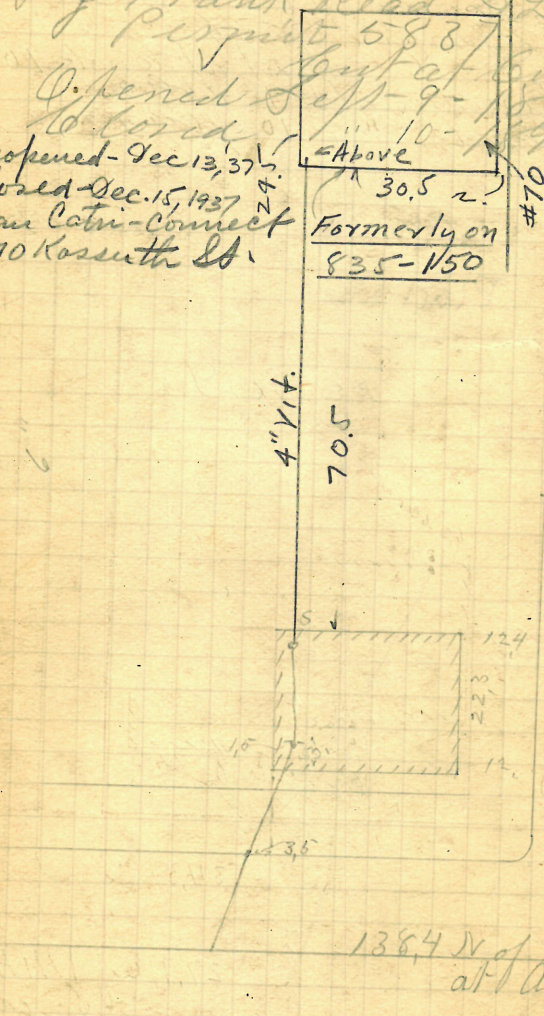
154.1 E of I NH
V Radclford St,

Wm Chapman
 24 - Oak & E Cor 32 - Sycamore St,
 D Holmes & Co. D.L.
 Permit 5836
 V Cut at curb 10,
 Opened Sept 9 - 1890
 Closed " 10 - 1890

Plotted.



Bridget Hill
 75-foot line S.W. Cor. 64-Rossenth
 of Frank Reed St.
 Perpet 588
 G. opened Sept-9-1896
 Closed Sept-10-1898
 Reopened-Dec 13, 37
 Closed-Dec. 15, 1937
 Jean Catrin-Connect
 #70 Rossenth St.



Rossenth St.

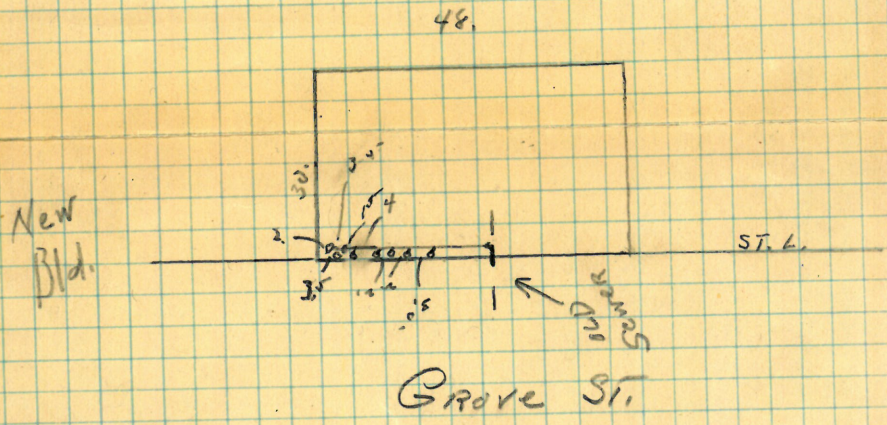
10001

St. Payshul Ind. Home & School

Bell St (into Grove & Solby)

Opened June 2
Closed 4/31

L. F. Moore Jr.



BR 729
88-9 ✓
PE

124

126

H 51 GOWE

Win M Harris

47-49-51-53-Whipple 56,

John Keogh D.L.

Permit 15-845

V

Cent at curb 10,

Opened Sept 11-1890

Closed " 13-1890

Reopened May 9-1925

Closed " 9-1925

M. Greenstein D.L. - Eleventh

Platted

Reopened Aug 22-190

Closed " 22-190

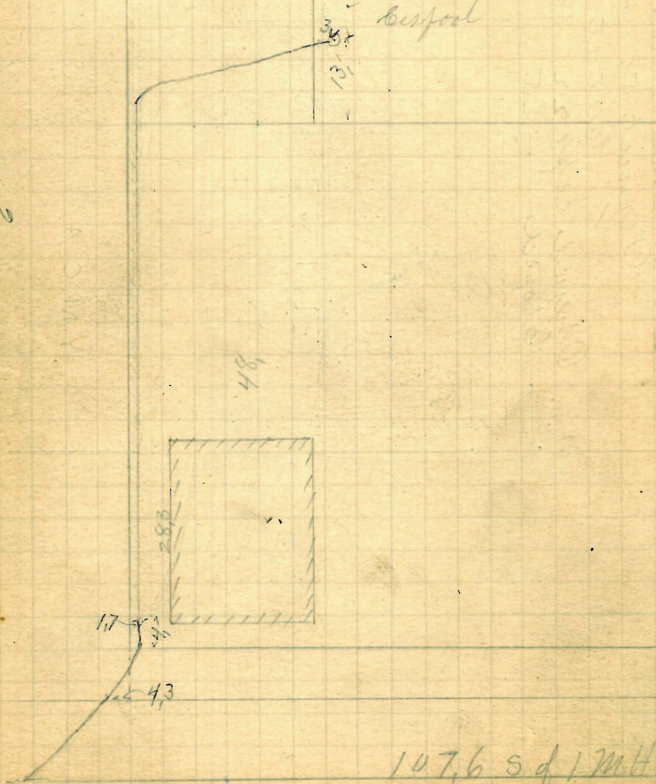
M.R. Salmon D.L. - Eleventh

Reopened April 13-1914

Closed " 14-1914

J. J. Hammond D.L. - Relay

Surf



107.6 s of 1 M.H.

Oregon

GONE

127

Daniel A Cook
917 Providence St.
J. Frank Read & L.
Permit 5846

cut at curb 10.5

Opened Sept 13-1890

Closed " 19-1890

Platted

Connects with drain previously laid



75. S of M. H.

at General St.

128^v

CONE PLAN 162-15

NEW OWNER LOCKWOOD PLAZA

III PEARL STREET (INTO

56? *Prairie Avenue* PRAIRIE AVE.

98-100-104 Frank Read & Co.

102-104 *Permit 5847*

*Opened Sept. Nov. 3, 1890 -
Closed Nov. 5, 1890.*

BP 33

537

OPENED 10-16-1978

CLOSED 10-16-1978

D.L. OCTEAU BROS.

NEW BUILDING #3

INTO OLD CONN. INTO PRAIRIE AV.

INSIDE PROP.

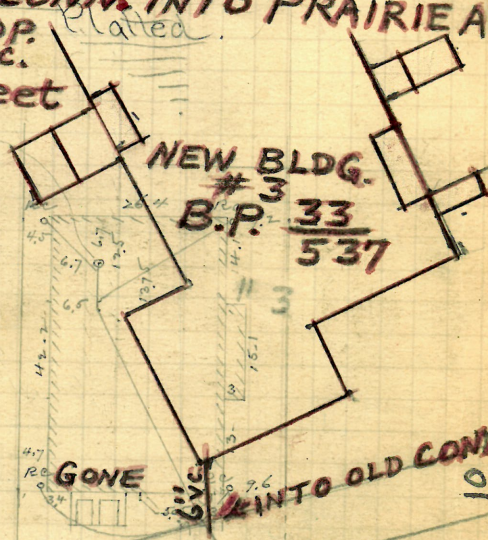
LINE 6" V.C.

CUT 12 Feet

5" pipes.



w.c., sinks, etc.



*the 2 front w.c. into
T. over trap.*

PROPERTY LINE

10 CURB LINE

#98-104 PRAIRIE

SEWER LINE

AVENUE

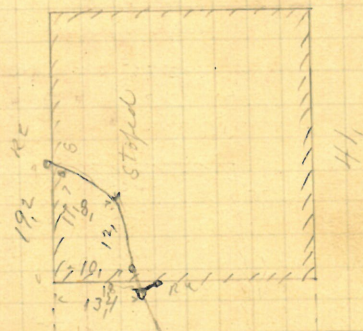
1ST M.H.N. OF PEARL STREET

38.2 N. of 1st m.h. N. of Pearl st.

129 ✓

Opened Sept 15-1890
Closed " 18-1890

3



Oak St

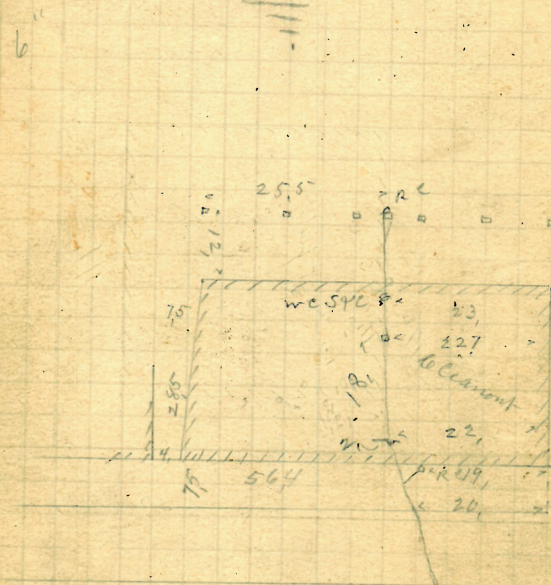
71.6 S of 1 mi H
N. Oak St.

130

REMOVED

Thomas Remington
 10-12 Winter 86,
 Bernard Brady & L.
 Permit 5849
 V Out at Curt 103
 Opened Sept 27-1890
 Closed " 27-1890

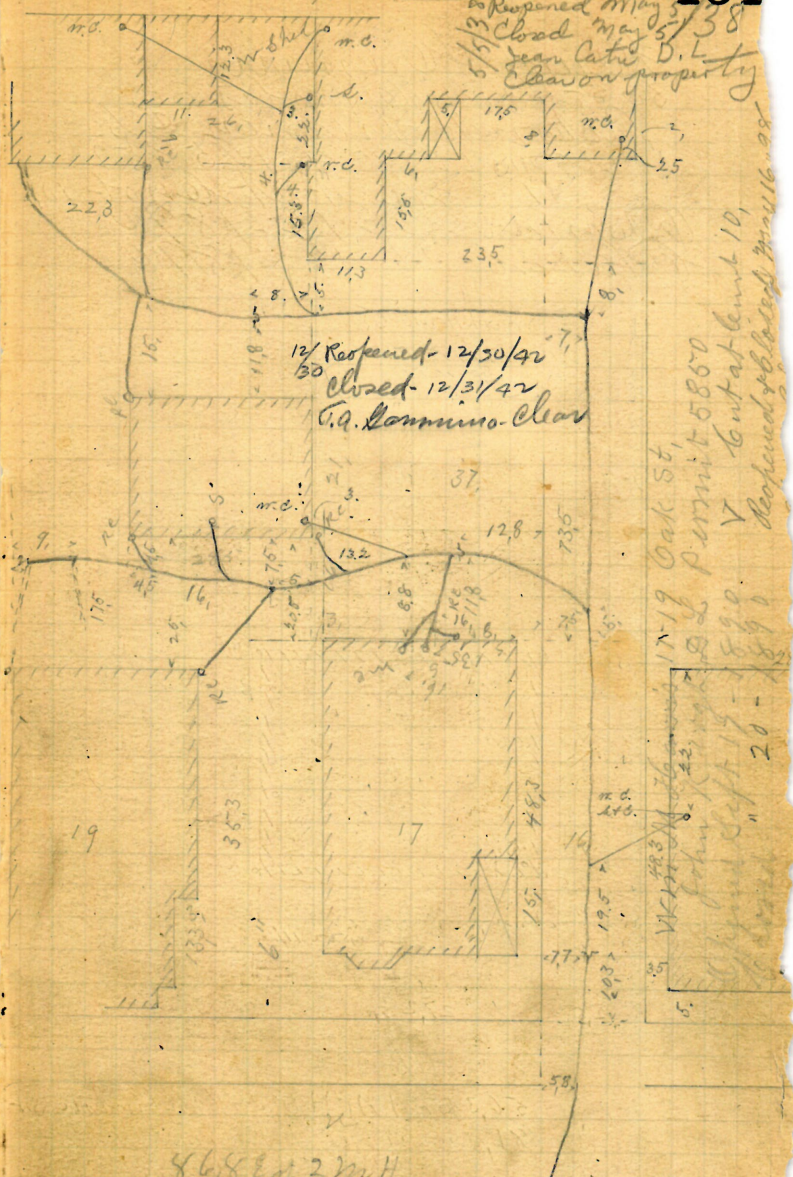
Platted



31. N. of 2^d M. H.
 Pond

Reopened Sept 16/98
 Closed " 19/98 J. F. Daniels D.C.
 Reopened May 5/38
 Closed May 5/38
 Jean Cate D.L.
 Eason property

131



12/ Reopened - 12/30/42
 30 Closed - 12/31/42
 C.A. Hannino - Clar

19 Oak St.
 19 Oak St.
 Permit 5860
 V. 6 out at least 10,
 Reopened 26/42
 20 -

86/82 of 2nd H
 19 Oak St.
 19 Oak St.
 19 Oak St.

134

P $\frac{167}{32}$

Thomas H. Leonard
343 Friendship St. W. on Summer

Bernard Brady D.L.

Permit 5854

V

Out at curb 10.

Opened Sept. 23. 1890

Closed " 25. 1890

Reopened Dec. 15-1908 #171

Closed " 16-1908

H. H. Colgrave & J. H. Leonard.

Plotted

Th. Dec. 31/32

Ch. " /32
C. H. Munds St.
Clear

Reopened Oct. 4/27

Closed Oct. 5/27

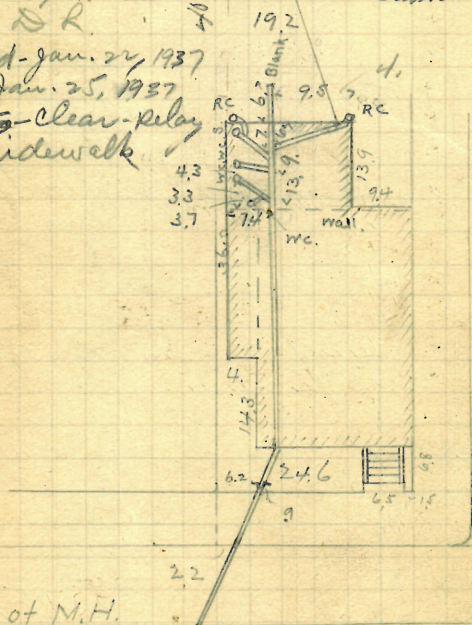
C. Gibbons D.R.

1/2 Reopened Jan. 24, 1937

Closed Jan. 25, 1937

F. T. Trotter - Clear - Relay

Open sidewalk



SEE BK 3613 p. 52

$\frac{157}{13}$

135

(82)

Rachel R Briggs
35 21 Halpin St. S.W. Pratt
John H. Keogh D.L.
Permit 5866

Y Tent at least 9.6
Opened Sept 27, 1890

U. Crook " 24 1890

Reopened July 22, 1919

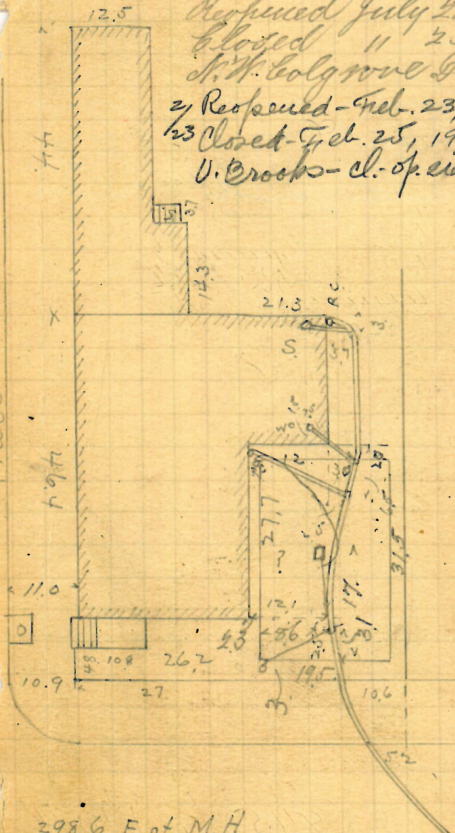
closed " 23-1919

S. H. Colgrove D. L.

2 Reopened - Feb. 23, 1939

13 Closed - Feb. 25, 1939

U. Crook - cl. of ident. Rocks.



298.6 E. of M.H.
at Benefit

136

GONE

Thomas B. Snow
Rear 94 Elm St.

Jason A. Blackmar D.

Permit 6-85-6

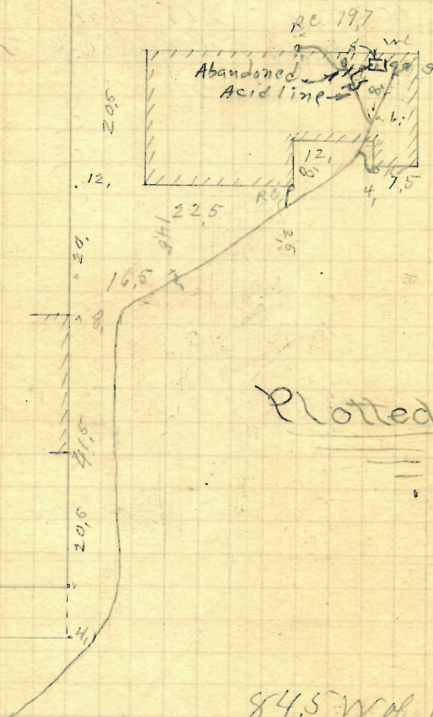
V Cent at Cent 9

Opened Sept-18-1890

Closed " 20-1891

Reopened - May 26, 1944

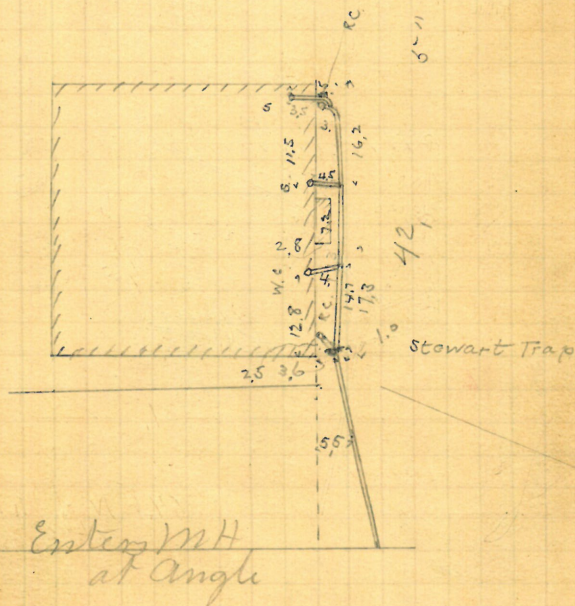
Closed - May 31, 1944

J. De Bartolo - add and
line

John P. Mumford
 Babinnell SW Cor 39-7 Francis St
 Bernard Brady D.L.
 Permit 585-7
 ✓ Cut at curb 10.3
 Opened Sept 19-1890
 Closed " 22-1890

Plotted.

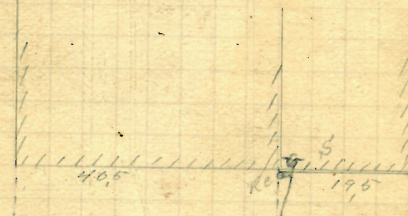
Francis St.



1? Estate Job Suckell
 Claverick E. Co. 368-872 Broad.
 Bernard Brady D.L.
 Permit 5860
 V Rent at curb 10
 Opened Sept 20-1890
 Closed " 20-1890

6" Plotted

Broad St



34, 35 of 11111
Broad St.

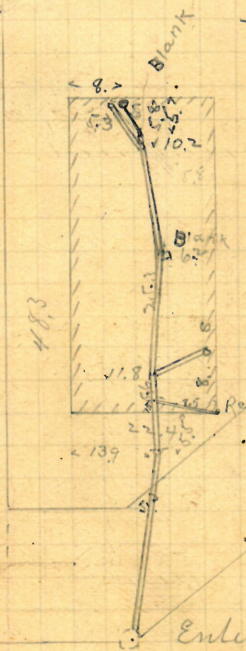
Isaac W. Sawin
85 Joslin St.
Frank Reed D.L.
Permit 5-861

Opened Sept 18-1890
Closed " 20-1890

Reopened Dec. 9. 1893
Closed Dec. 9. 1893
Geo. W. Lewis D.L.

Reopened June 11, 1935
Closed June 13,
F.D. Mascola-Add.

5" Pipe



Plotted

Reopened Jan 12 1945
Closed " 12 1945
Clear Line + Remove Traffic
T. Gemmino D.L.

Enters M.H. at Angle

George W Carr & wife
36 Toben St.

36 Zoben St.

J Frank Read D.L.

Permit 5863

2

Cent at curb 101

Opened Sept 30-1890

Closed Oct. 9-1890

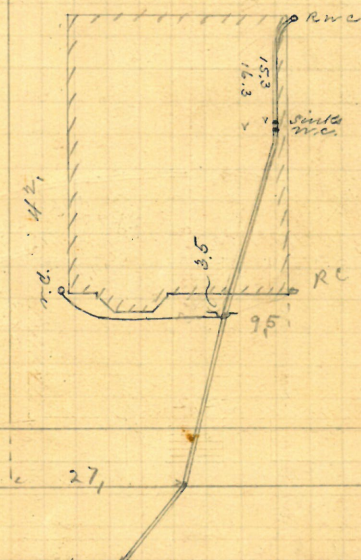
Opened & closed, Oct. 18/90, by G. F. Read D.
Reopened Aug. 31/99

Received Aug. 31st 99

Closed Sept 11 99

W. A. Chadley D. S. -

Plotted.



132, Sp. M.H.
at Penn St.

144

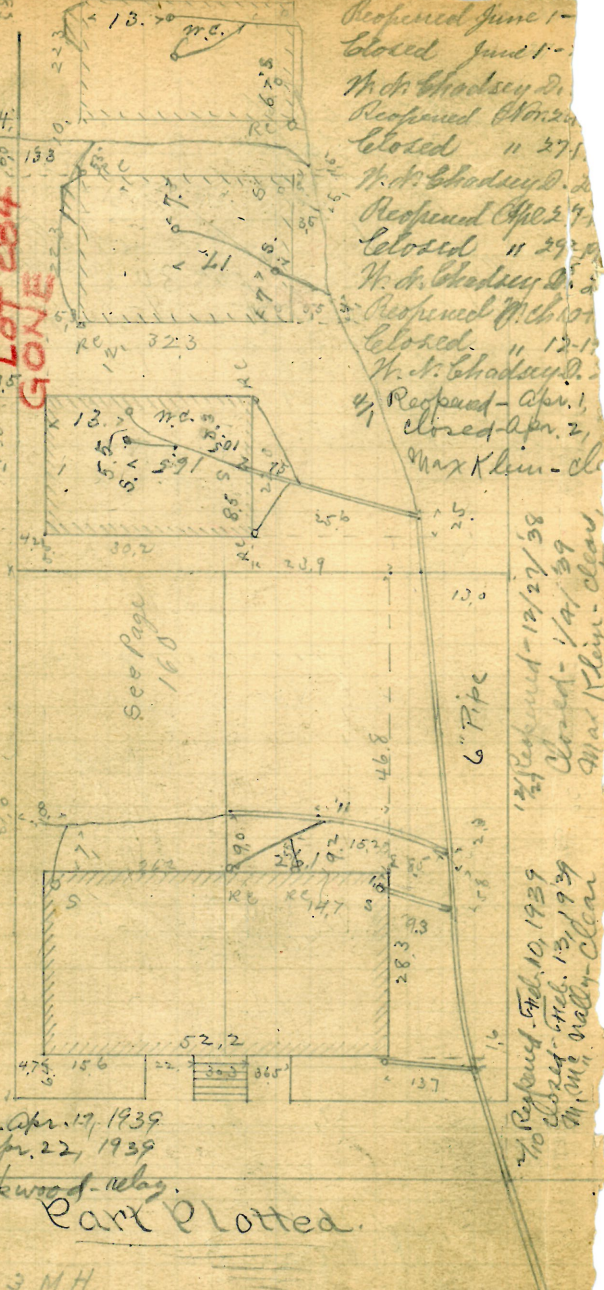
Est. Samuel Richards 1888

130-135 Doyle Ave

John Keogh D.F. Closed Oct 1-4

Permit 1865 cut at cul. 10.5

#4284
GONE



Reopened June 1-
Closed June 1-
W. S. Chadsey D.
Reopened Nov 27-
Closed " 27-
W. S. Chadsey D.
Reopened Apr 27-
Closed " 27-
W. S. Chadsey D.
Reopened May 1-
Closed " 1-
W. S. Chadsey D.
Reopened - Apr. 1,
closed Apr. 2,
Max Klein - cl

12/27/38
Closed - 1/2/39
Max Klein - cl

10/10/1939
Closed - Feb. 15, 1939
M. Klein - cl

4 Reopened - Apr. 17, 1939
17 Closed - Apr. 22, 1939

R. L. Kirkwood - rel.

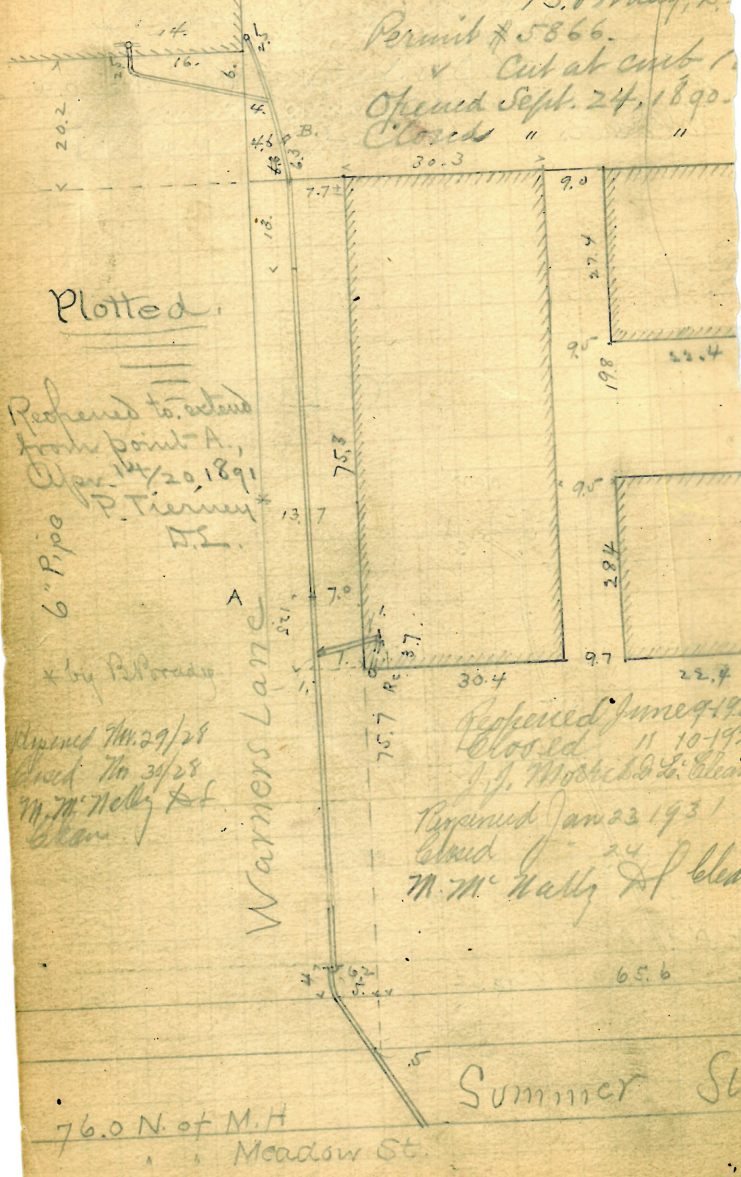
190 E of 3 M H
W. East Ave

146

GONE

Reopened 1/6/60
Closed 1/6/60
D.L.A. Gammino (Clear.)

American
Electrical Works
3120 Summer St.
B. Brady, S.
Permit #5866.
Cut at curb 1.
Opened Sept. 24, 1890.
Closed " " "



Plotted.

Proposed to extend
from point A,
Apr. 14/20, 1891
P. Tierney
D.L.

6" Pipe
* by B. Brady
Warners Lane

Reopened Nov. 29/28
Closed Nov. 30/28
M.M. Nally & L. Allen

Reopened June 9/92
Closed " 10/92
J. J. Wood & L. Allen
Reopened Jan 23 1931
Closed " 24
M.M. Nally & L. Allen

76.0 N. of M.H.
Meadow St.

Summer St

148

#127

Sarah Treanor

#111

Brook St. NE cor Sh

David C. Barry D.L.

Permit # 5868

Cut at curb 10.1

Opened Sept 25, 1890

Closed " 26, "

Reopened July 22, 1937

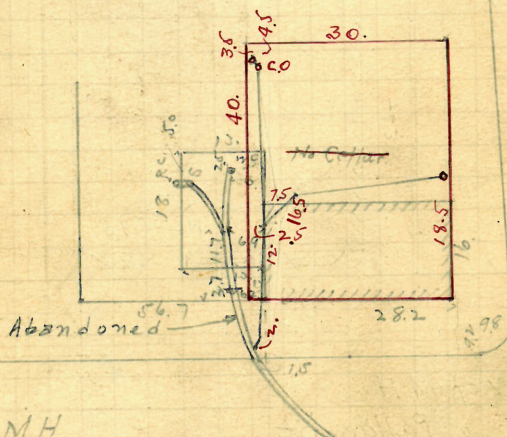
Reclosed July 31, 1937

J. Scott - New House

Plotted

5" Pipe

Sheldon St.

40.7 N. of M.H.
at Sheldon St.

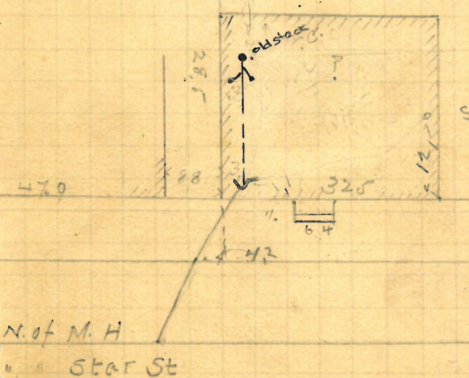
Mary R. Beckham and
Isabella F. Calder
#52 Benefit St.
J. Frank Read 32
Permit # 5869

Opened Sept. 24, 1890
Closed " 6-11"
Reopened Sept. 20-1944-
Closed " 20-1944-

C. Gallo L. Li-

opened 10/13/66
closed
S. Danella, add.

Plotted.



Tr. Dec. 31/90

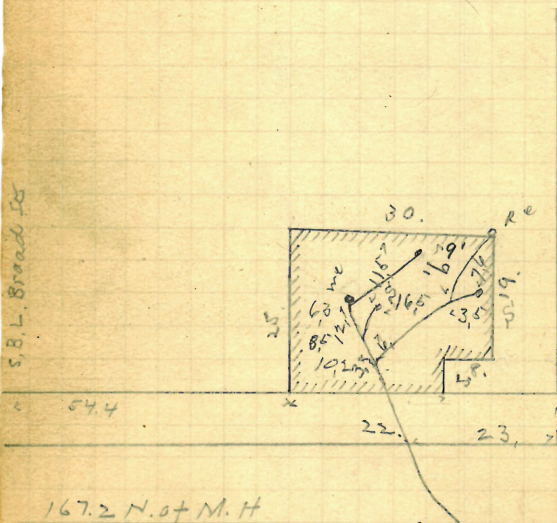
150

GONE

William Sessions
 #74. Summer St.
 Jason A. Blackman D.L.
 Permit # 5870
 V cut at curb. 10.2
 Opened Sept. 27, 1890
 Closed Oct. 8
 Reopened + Closed Aug. 12-1912, W. H. Chassey D.

Plotted

S. B. L. Broad St.



167.2 N. of M. H

S. of Conduit

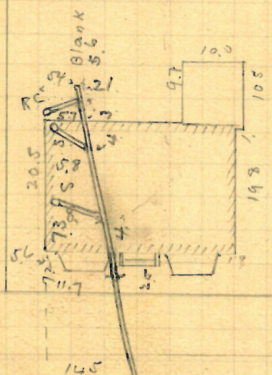
Edwin M. Waldron
 # 16394 Kenyon St.
 Jason A. Blackman & L.
 Permit # 5871

V cut at curb 10.6
 Opened Sept. 26. 1890

Closed " 27 "
 Reopened & closed Aug. 8-9-1906
 A. Chello D. L. - Cleanout -

Plotted

Reopened Feb. 23-1912
 By A. Chello D. L. - Cleanout -
 Reopened Nov. 2-1914
 Closed 1914
 A. Chello D. L. - Cleanout -
 Reopened Aug. 19-1917
 Closed 1919
 J. Cator D. L. - Cleanout -

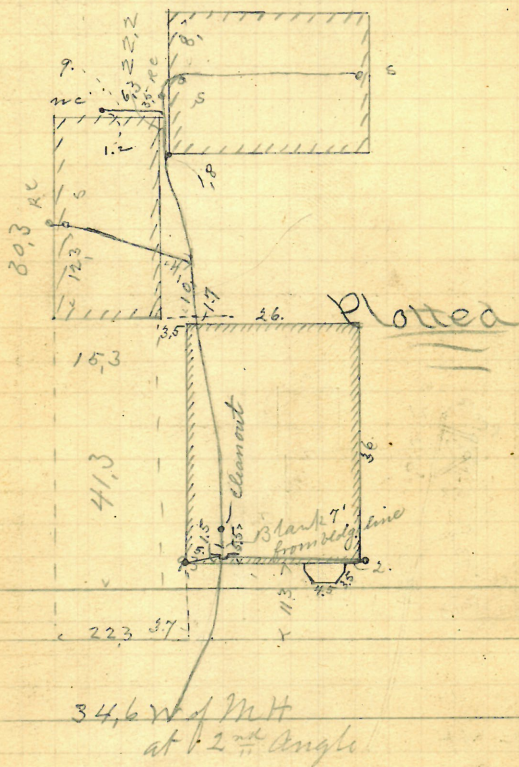


39.2 W of MH

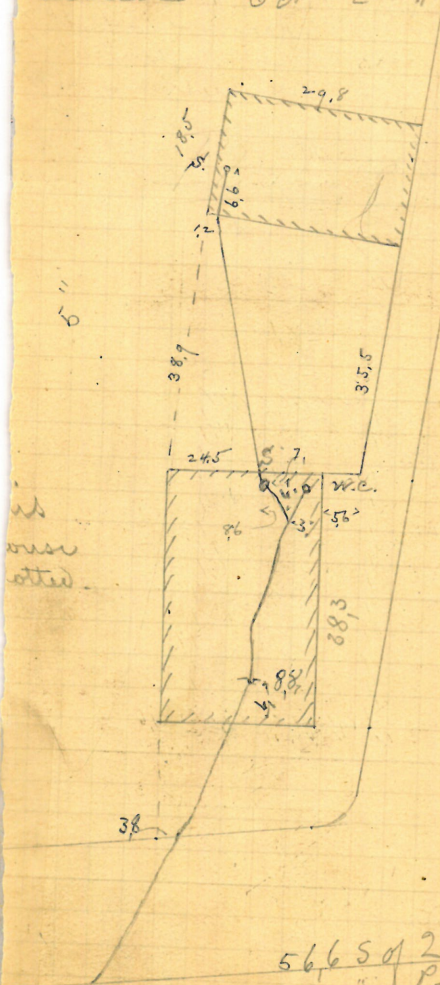
E. Pallas St.

Leah Walker
87-91 Crushing St.
John Keogh D.L.
Permit #5872
V. cut at curb. 10.
Opened Sept. 30-1890
Closed Oct 2

Reopened Sept 12, 91.
Reopened + closed Sept. 14, 1893, Closed Sept 13, 91
by J. C. Conroy, D.L. 30,3 J. R. Daniels D. L.



Rice and Hayward
 84-686 Broadway St & E cor Portland
 Bernard Brady D.L.
 Permit # 5873.
 Cut at curb
 Opened Sept 30-1890 9.5
 Closed Oct 2 "



Proposed to ex
 tend to house on
 Portland st. by
 P. Brady,
 June 5,
 1891

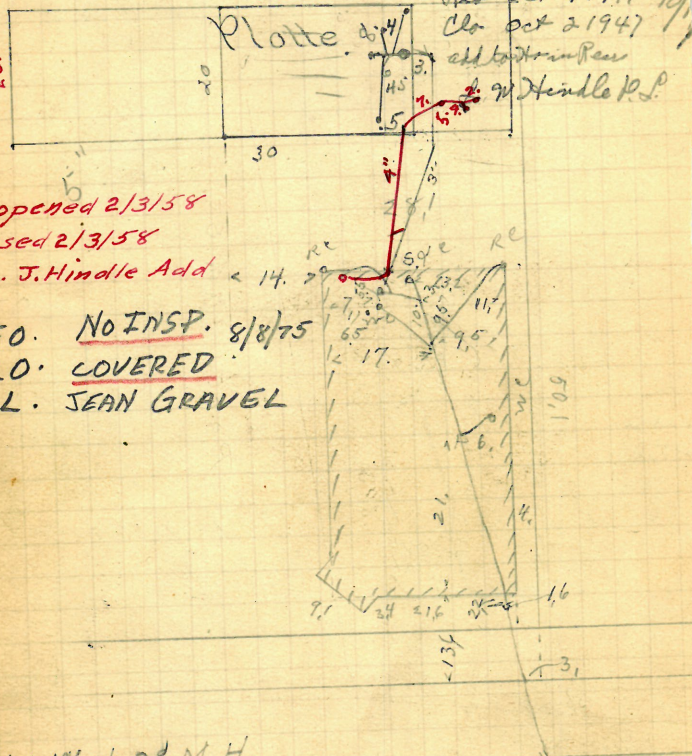
Portland St.

Plotted

566 5 of 2 m 4
 Pearl St.

Hand-drawn map of a plot area. The map is a rectangle with a grid. The top edge is labeled "Plotte". The right edge is labeled "Clo Oct 2 1947". The bottom edge is labeled "all bottom in River". The left edge is labeled "H.S.". The bottom-left corner is labeled "5". The bottom-right corner is labeled "5.3". A red line is drawn from the bottom-left corner (5) to the bottom-right corner (5.3). The line is labeled "Hendle P.L.".

D. L. JEAN GRAVEL



41.1 W. of 2^d M. H.
E. of Greenwich St.

156

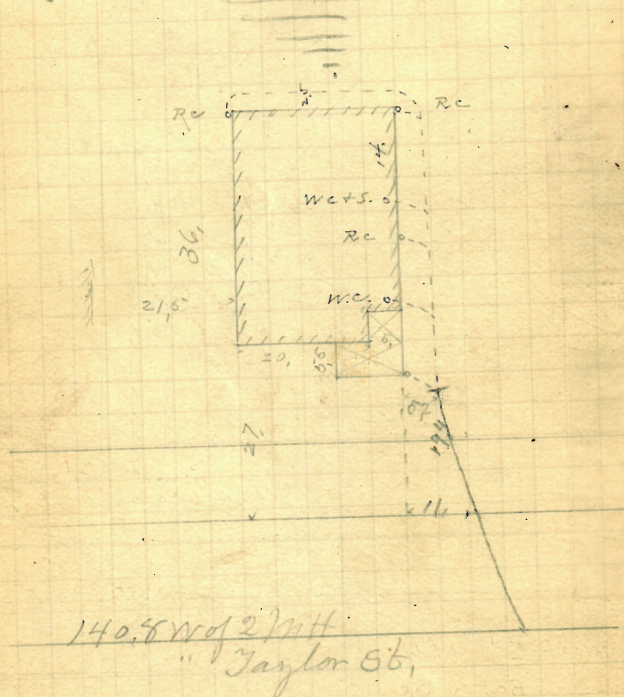
P- $\frac{158}{33}$

Mrs H. Sawyer
312 Wesleyan Ave
Pasout A Blackman S.
Permit # 5876
cut at curb. 104
Opened Sept 29-1890
Closed Oct 1 "

Dotted lines show work done later by
P. Tierney without a permit.

5"

Plotted.



P. Dec. 29/90.

Bernard Mc Guinness
33? Olney St. 38 bay # 51
John Keogh D.L.
Permit 5-877

lent at Cent
Opened Oct 6-1890
Closed " 9-1890

Keogh says 5 inch pipes

opened Sept 8-1914-
closed " 9-1914-
4. Misto of sky 3.5-

Plotted 11. 17-1925
J. Bernard Mc Guinness

13. 4.1
55. 50.6
52. 17.0
50. 19.25

opened Sept 4
closed " 5/30
Ross D.L.



Plotted

Plotted

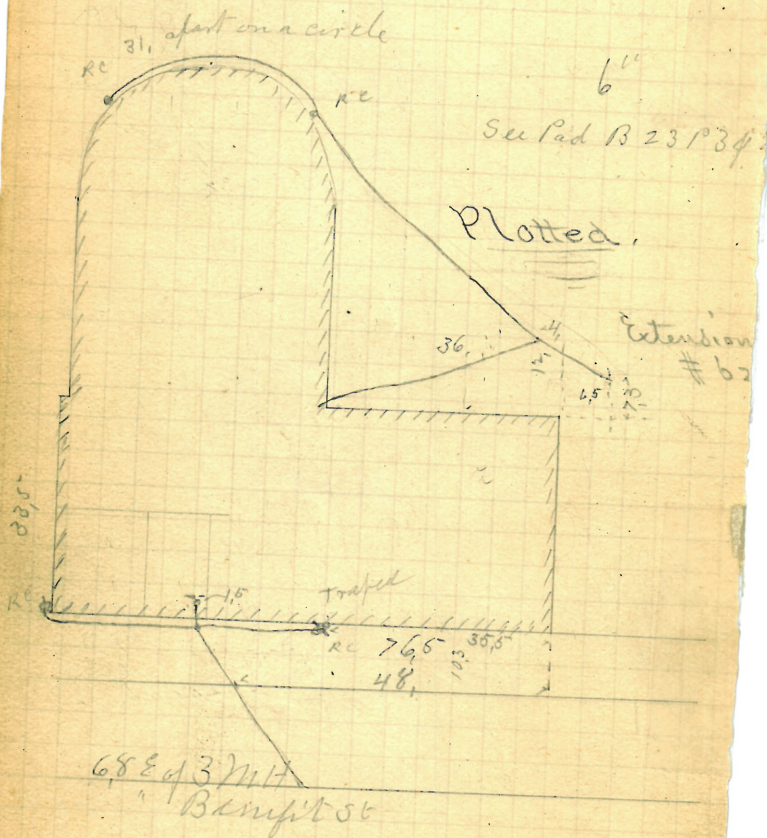
524 E of 1st St
W. Pratt St

Olney St

Dec 6/00

158

Elizabeth A Gammon
 16? Charles Field St.
 Frank Read D.L.
 Permit 6878
 Cut at curb 9"
 Opened Sept 29 - 1890
 Closed Oct 1 - 1890



Under Mr. Hart's
 inspection.

R. Dec 20/90

Martin Cummings

69 Joslin St.

Frank Road 21

Permit 5879

cut at curb 103

Opened Oct. 6 - 1890

closed " 7 - 1890

Reopened & closed May 5 - 1906

J. Deary D. L.

Plotted.



86,2 N of MH
at Rozant St

Brown University
Hayes St.
James Davis Son & L.
Permit 5880
Cut at Court 10.

Opened Oct 2 - 1890
Closed " 10 - 1890

CELLAR BOTTOM
SEE B.P. 4/7/78

and Sept. 1922
and Oct. 1922
G. Ryans & L.

P.J.K.
INSP.

Connection into
190-33

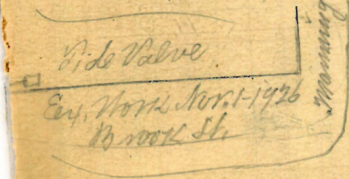
Not drawn
to scale. Disconnect &
Build M.H.

Gym.



Part
Plotted

Mainly under
Mr. Harts inspection



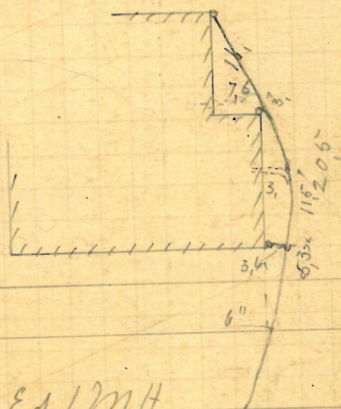
Reopened Aug 10-1903
Closed " 12-1903
For Diagram Sec
Reopened Nov 4-5-4
Reopened Nov 4-1922
Closed " 9-1922
Exp. Nov. 1-1926

Reopened Nov 1-1926
Closed " 1926
Mr. Craborn & L.

Reopened - Sept 16, 1923
Closed - Sept 22, 1923
M. Trafficante - Disconn
See - 132-2
13, Not 1 M.H.
" Mainly

Frank B Grant
 4 Tobey N E Cor 75th Ring St
 Frank Read & L
 Perry 6-882
 Cut at curb 10.3
 Opened Oct 3-1890
 Closed 6-1896

6" Plotted.



52.5 Eq / MH
 " Tobey St

164

P

163
44175
46

Henry W Dean & Wife
237-28 East Ave. into Barrington
John Hugh S.L.
Permit 5-883

Entered at curb
Opened Oct 2 - 1890
Closed 7 - 1890

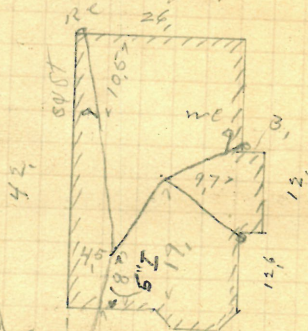
Carrington Ave.

6/1 Reopened - 6/27/39
6/2 Closed - 6/28/39
J. Bush - Clear
Renew - 5" Brown

Plotted

Reopened Sept 5/1945
Closed Sept 7/1945
Clear Rem. Trap Relay
4" from curb to W.
Op Smith Hammer

8 ft 6 in. from
center end of sewer



Trap Removed

East Ave.

R. Dec. 20/90.

8 ft 6 in. from 5" pipe