

BK. # 660

1

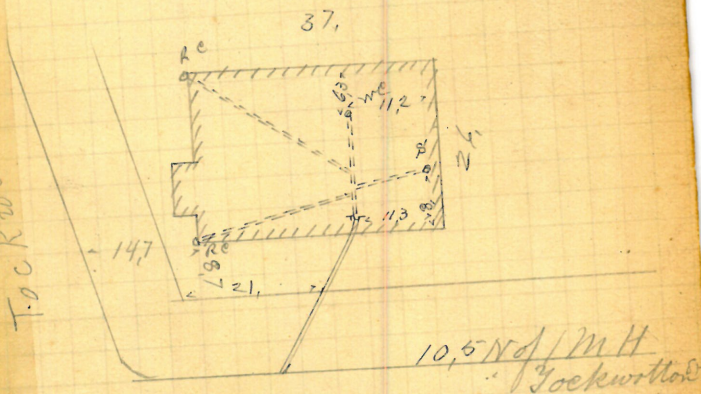
Jeremiah S. Plant Wife #
Thompson ^{NY} or Tockwotton 126
Frank Read D.L.
Permit 5052
Opened July 2-1888
Closed " 2-1888

4" from sewer

Connects with
drain previously
laid

Plotted

Tockwotton



Thompson St.

P. - 158
27

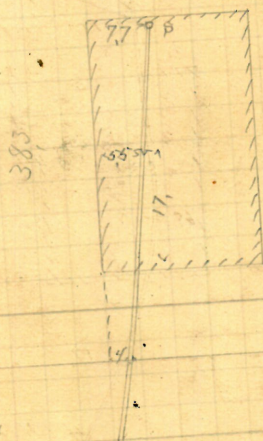
Elizabeth Manton
24 Webster St.

Bernard Brady D.L.
Permit 5-054

V Rental - Const 9
Opened July 5-1888
Closed " 6-1888

5" from sewer

Plotted



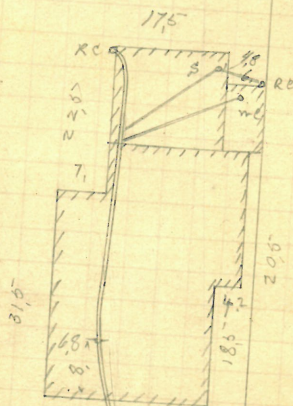
70 1/2' w of M.H.
E.V.R.R.

Webster St.

Mary P Capron
 443 Benefit St.
 f 7 Road DZ
 Permit 5-05-5
 V
 Opened July 5-1888
 Closed " 7-1888

Plotted.

5" from center



17.

492 ref 1 MH

Wickenden St.

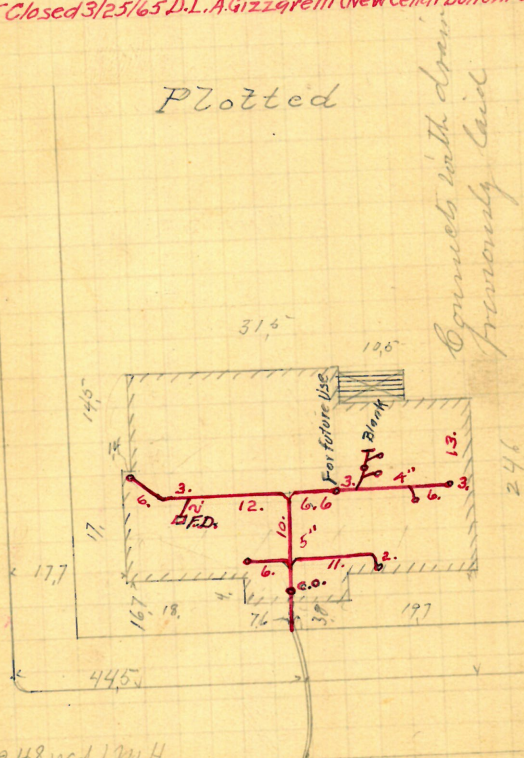
Benefit St.

Elizabeth O Connor wife of Timothy
71 Barnes St. S. W. cor. Thayer
J Frank Read D.L.
Permit 3-05-6
V Out at Lamb 8.5
Expired July 10 - 1888
Exond " 11 - 1888

Reo. 3/22/65 Closed 3/25/65 D.L.A. Gizzirelli (New Cellar bottom 3'-4"+5" I.)

Plotted

Thayer. St.



24.8 Wd / MHz

Thayer St

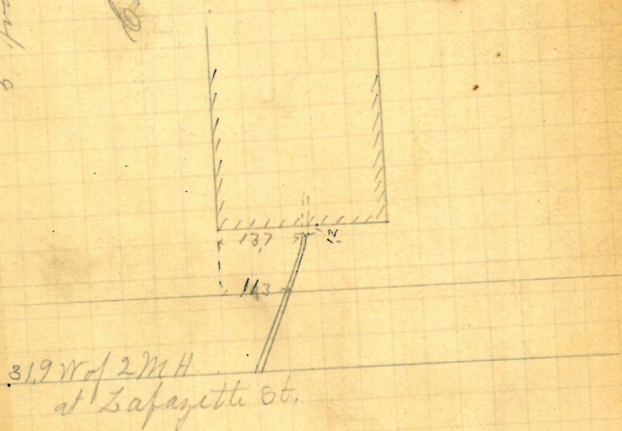
Barnes St.

Edwin N Howard
 C. S. Briggs Lessor
 #422 Washington St.
 Jason A Blackmar D.L.
 Permit 5-05-8
 V Cut at curb 10.5'
 Opened July 11-1888
 Closed " 12-1888

5' from curb

Connects with drain
previously laid

Plotted.



Washington St.

59-61

63-65

Nancy Dyson

John Hoogh D.L.

Permit 5059

Opened July 10-1888

Closed " 13-1888

Reopened Jan 26-1926

Closed " 1926

O. Goodman D.L.

Reopened Jan 24-1931

Closed " 1931

J. Murphy D.L. Clean

Plotted

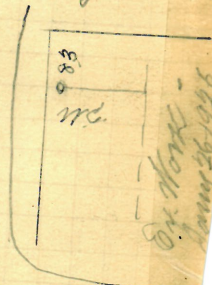
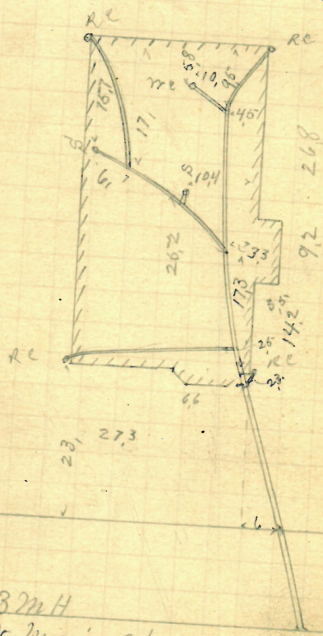
Reopened June 6-1935

M. Wally Clean Relay

Reopened 2/23/56
Closed 2/23/56

Clear Green side D.L. J.J. Morris
Walk.

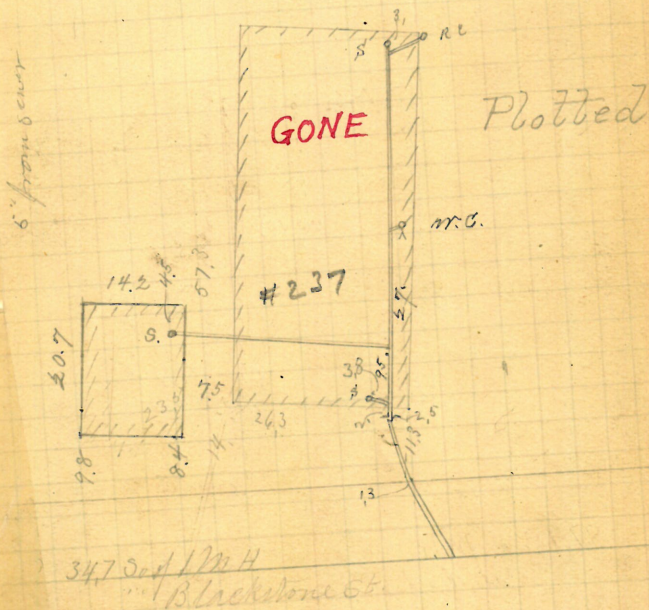
5" from S. corner



74.4 E 13 m H
N Main St.

Cypress St.

Patrick J. Christy
 235 Plain St.
 John Knight D.L.
 Permit 5-060
 but at least 10.
 Opened July 18-1888
 closed " 18-1888
 Reopened 1904~
 Closed 1904~
 P. H. Nichol D. L.~
 Reopened Nov 10-1904
 Closed " 11-1904
 J. Deary D. L. - add -



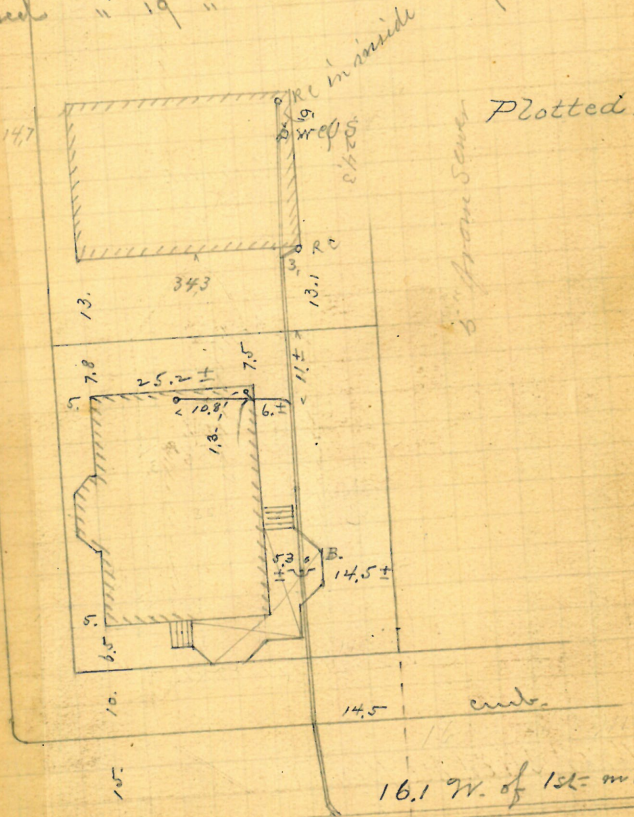
Plain St.

Felix O. Rowke & wife
 Manning Cor Lts
 Bernard Brady D.L.
 Permit 5062

Opened July 13 - 1888
 Closed " 14 - 1888
 Cut at curb 9.11"

Reopened Apr. 18/92 to drain corner house
 Closed " 19 "

F.H. Read, D.L.



Manning St.

Pawtucket Just for Savings
35-37 Whelden St.

James C. Conway D.I.
P.O. No. 6063

Opened July 17-1888
Closed Aug 4-1888

Reopened Oct 17-1899

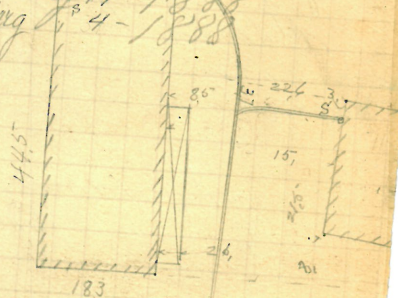
Closed " 23-1899

A. W. Colgrove D. L. - Relay

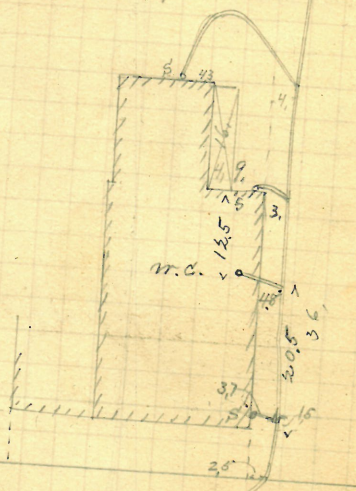
Reopened Sept 10-1903

Closed " 11-1903

H. Collison D. L. ~



Plotted

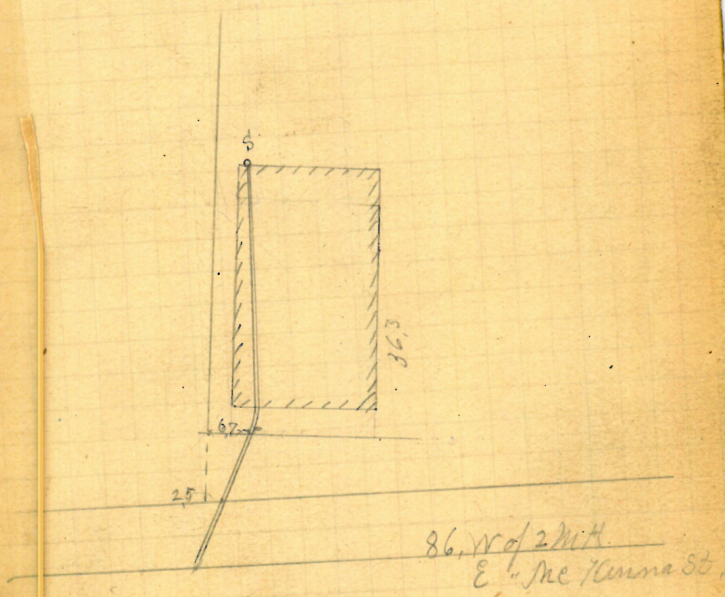


46 W. of S. H. of McKenna St.

Whelden St.

Pawtucket Inst for Savings
 33 - Whelden St.
 James C Conroy D.L.
 Permit 5064
 V. Cent at curb 10.8
 Opened July 12-1888
 Closed " 17-1888

Plotted



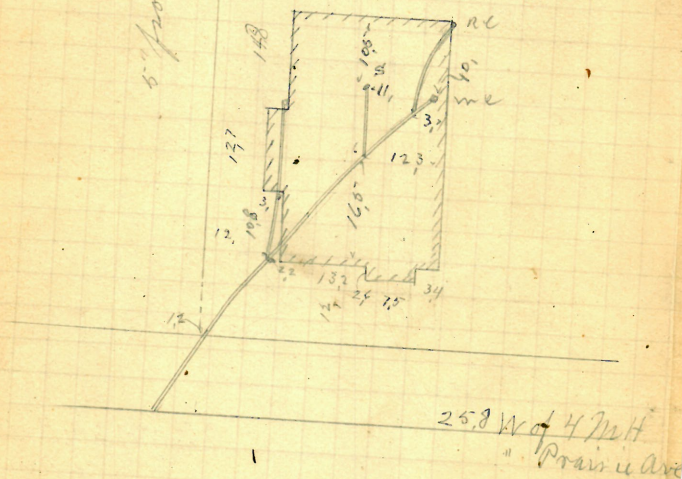
Whelden St.

74 John A Cole
 Chester Avenue
 Frank Read D.L.
 Permit 6065

Opened July 13-1888 Out of curb 9.9"
 Closed July 14-1888
 Reopened July 8-1904
 Closed " 13-1904

W.H. Chadwick D.L. - Clear out
 Reopened - Apr 4, 1933 Reopened - Aug 15, 1933
 Closed - Apr 5, 1933 Closed - Aug 15, 1933
 A. Squirrels D.L. T.A. Gammitt - Clear
 repair inside. open P.C. 6065

Reopened - May 14, 1934
 Closed - May 14, 1934
 T.A. Gammitt - Clear open st.



Chester Ave.

Richard W. Comstock
 Skating St.
 Jason A. Blackman D.L.
 Permit 5067

Opened July 12-1888
 Closed " 19-1888

Reopened July " 31-1888 by Theo. P. M.
 Closed Aug " 2-1888

Reopened Aug 21-94

Closed Aug 22-94

E. Phillips D.L.

Plotted

Reopened Nov. 2-94

Closed Nov. 4-94

The Theo. Phillips Co.

N.C. added

Meeting St.

Brook St.

83.2

88.2

36

Reopened 6/16/59
 Closed 6/16/59
 D.L. P. Mangione
 Remove Trap Clear.

Brook St.

Crosses curb 88.2' W. of 1st Mt.
 W. of Brook St.

5068

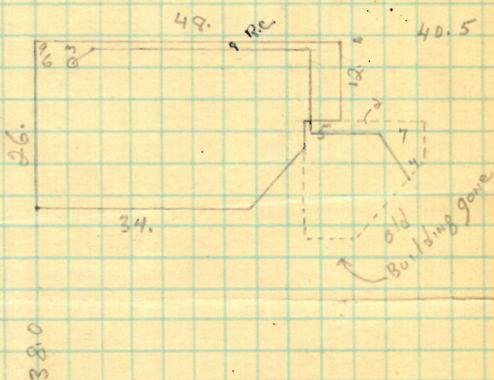
Apr. 16/38

Leopold Diamond
Randall Street

opened - /
closed 4/28/38

Wm. D. Fortin

4" + 2" IRON



Randall St.

Charles St.

660
17

Joseph D. Randall
 Charles for Randall
 John Klogg D.L.
 Permit 5068

Opened July 13-1888
 Closed " 13-1888

Reopened & closed Nov. 21-1900
 Wm. Goudry D.L.

Reopened Feb. 5-1903 - Cleanout -
 Closed " 6-1903 - J. McPhail D.L.

Reopened Apr. 22/38 Reopened Oct. 24-1906
 Closed Apr. 26/38 Closed " 24-1906

W. D. Fortin D.L. J. McPhail D.L. - Cleanout -
 add new bldg.



Reopened Aug. 25-1927
 Closed " 25-1927
 W. D. Holburne D.L.

Randall St.

18

GONE

Michael Greeley
 56 Charles St.
 John. Neagh D.L.
 Permit 5269

Opened July 14-1888
 Closed July 16-1888
 Cut at Gust 94

Reopened May 16-1904

Closed " 17-1904

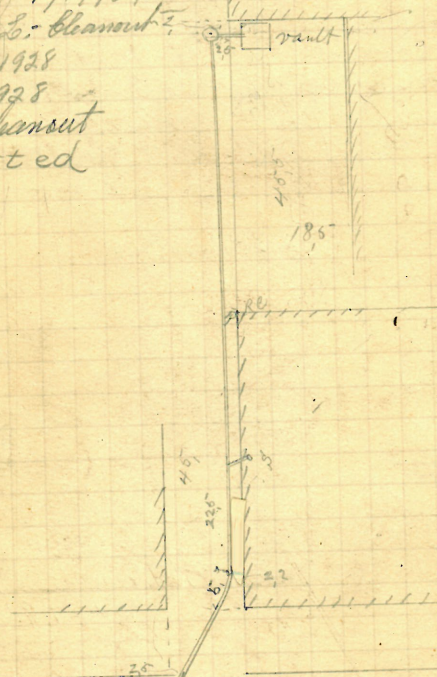
H.B. & Neil D.L. - Cleamout

Reopened Apr. 18, 1928

Closed 1928

A. Quill D.L. Cleamout

Plotted



733 No of M.H.
 at Fletcher's Lane

Charles St.

GONE

± 586

6 Catherine Mc Elroy
374 Wickenden St.
Bernard Brady D.L.
Permit 5071

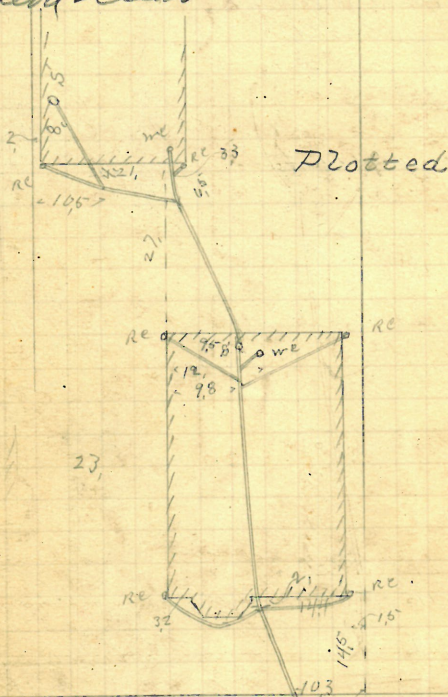
of the same

Opened July 16-1888
Closed July 18-1888

5/28 Received - May 24, 1943

Closed: May 25, 1943

P. Lapierre & Cleav



6" from above

96,3 Wd 4 Mt
" Garro St

Wickenden St.

~~James F Cooney~~
~~170 Borden St.~~

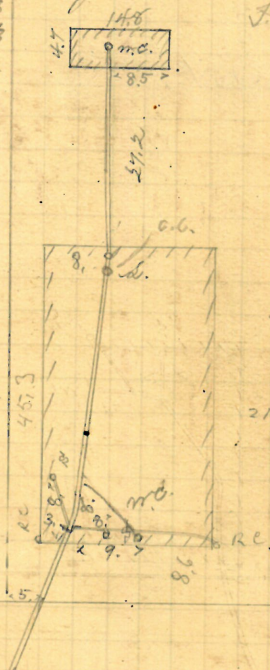
~~Frank Beard D.L.~~
~~Permit 5072~~

Opened July 16 - 1888
 Closed " 17 - 1888
 Reopened Oct 14, 98

Closed " 17, 98 Reopened April 3, 1931
 J. F. Cooney D. L. - and " 4, 1931
 J. H. Hagg D.L.

opened Mch 27, 1913
 closed " 27, 1913
 beyond D. L. -

6' from St.



827 W. M. H.

at Mary St.

Borden St.

Willard Sayles
 37-39 Pitman^{S.W.} Cor. Lane St.
 John Keogh D.D.
 Permit 6074
 Cut at Corb 9.
 Opened July 24-1888
 Closed " 26-1888

Plotted



37 W. 1/2 M. H.
 W. Lane St.

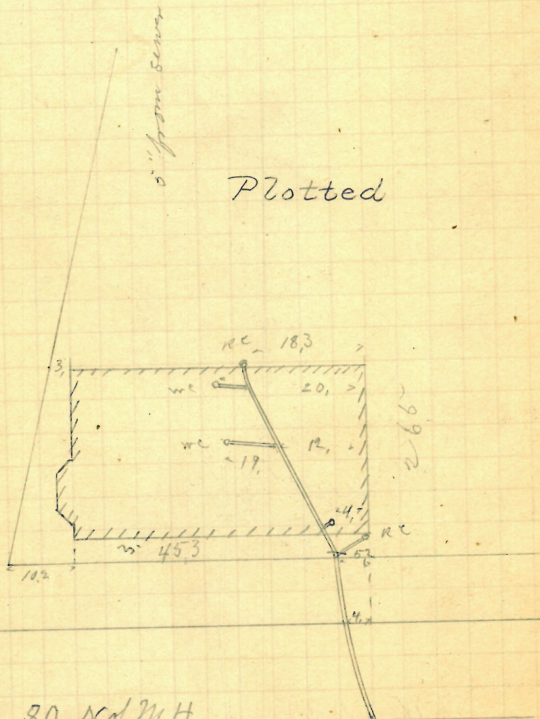
Pitman St.

24^v

Daniel Gorman
 East S.E. Cor^r 325 Wickenden St.
 John Klopp D.L.
 Permit 5076
 V Cut at curb 10.2"
 Opened July 26-1888
 Closed " 28-1888

Wickenden St.

Plotted



80. No. 11 H
 at V. Coler St.

East St.

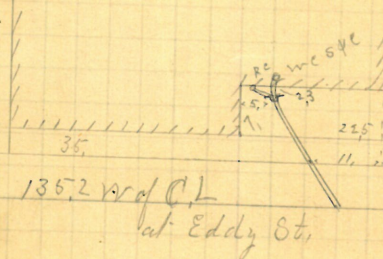
Estate B Cranston & Wife
 Union Cor Fulton St.
 J. Frank Riad, D.L.
 Permit 5076
 Cut at curb 7.4
 Opened July 20 - 1888
 Closed " 21 - 1888

abandoned ?

Plotted

5" from center

Union St.



Fulton St.

27



SEE 3289
167

11712 of 17th H of Summer
Conduit St.

C. M. Rhodes & M. Battley
 Union St.
 Geo Phillips & Co. D.C.
 Permit 5-079
 V. Cent at Curb 7.
 Opened July 23-1888
 Closed " 25-1888

Plotted



Union St.

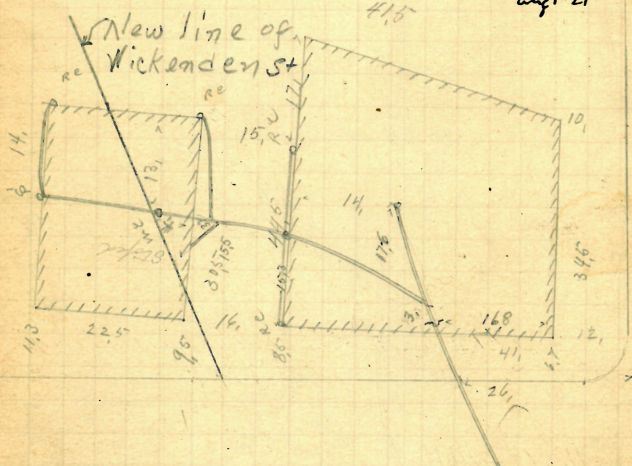
30^v

Remained

Peter Moran
 S. H. B. Benefit Cor. Wickenden
 John V. Coogh D.L.
 Permit 5080
 Cut at curb 99"
 Opened July 24 - 1888
 Closed " 26 - 1888
 Reopened June 9 - 1905
 Closed " 9 - 1905
 A. Burtwell D.L. - Cleanout

Plotted

House removed July 21
 drain abandoned 28th Aug 1-21



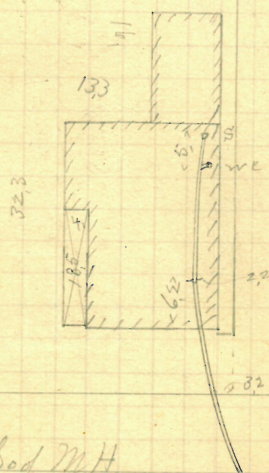
10, N of M H
 8 Wickenden St.

Benefit St.

William Johnson
 18 Marshall St.
 Jason A Blackmar D.L.
 Permit 5284
 V. Bent at curb 9.7"
 Opened July 31-1888
 Closed Aug 2-1888

Plotted

5' from sewer



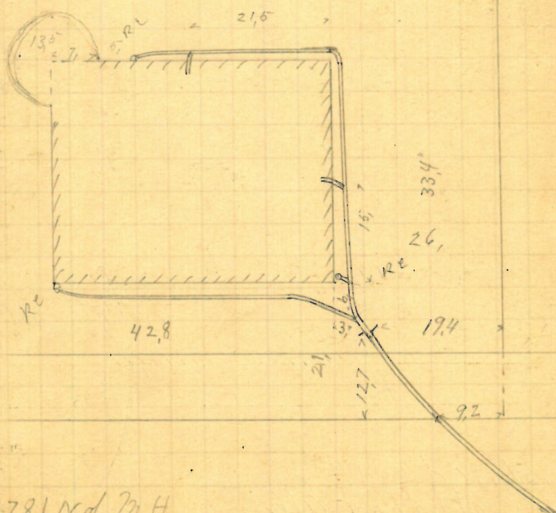
688 Sed M.H.
 at Carpenter St.

Marshall St.

John Mc Manus & Wife
 Brook Cor Bowen
 John Keogh D.L.
 Permit 5085

Opened July 28 - 1888
 Closed " 31 - 1888.
 opened April 21, 1928
 closed " 1928
 M. Kelly D.L.
 Permit

Plotted.



1781 N of M.H.
 at Cushing St.

Brook St.

Robert J. James O'Hare

451 N Main St

John Keogh D.I.

Permit 5086

✓

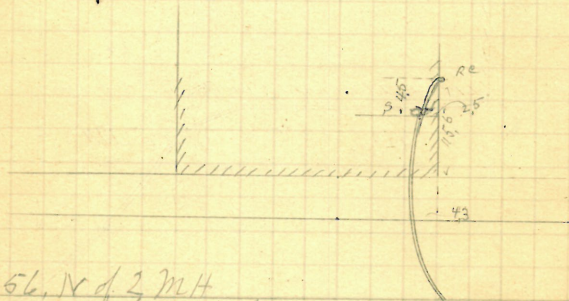
cut at curb 8.5

Opened July 30 - 1888

Closed " 31 - 1888

Plotted

5' from curb



56. N of 2 M.H.
at short alley

N. Main St.

Mary Rivers & Others
281 N Main St.
James L. Millard D.L.
Permit 5088

Opened July 30-1888
Closed Aug 3-1888

Reopened Sept 14, 94

Closed Sept-14, 94

W. J. Hogg D.L. - Cleanout

Plotted

Reopened Apr. 19, 95

Closed " 19, 95

W. J. Hogg D.L. - Cleanout -

Reopened Dec. 6- 95

Closed Dec. 7- 95

W. J. Hogg D.L.

12 Reopened-12/9/39

8 Closed-12/9/39

Q. Mero. clear

Removed trap

Reopened & closed Apr. 23-1903
J. D. Barry D. L.

Connects with old work

Trap removed

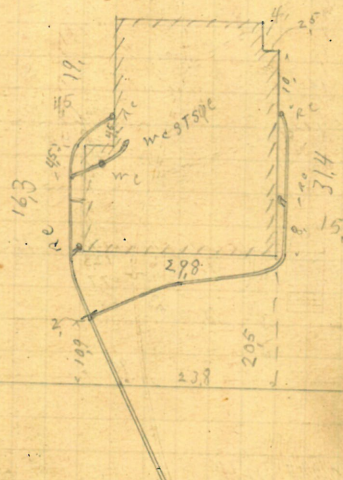
M Hat
Superh. 50

N. Main St.

Samuel M. Nicholson
 Brook St.
 John W. Furlong D.L.
 Permit 5589

Opened July 31 - 1888
 Closed Aug 4 - 1888

Plotted

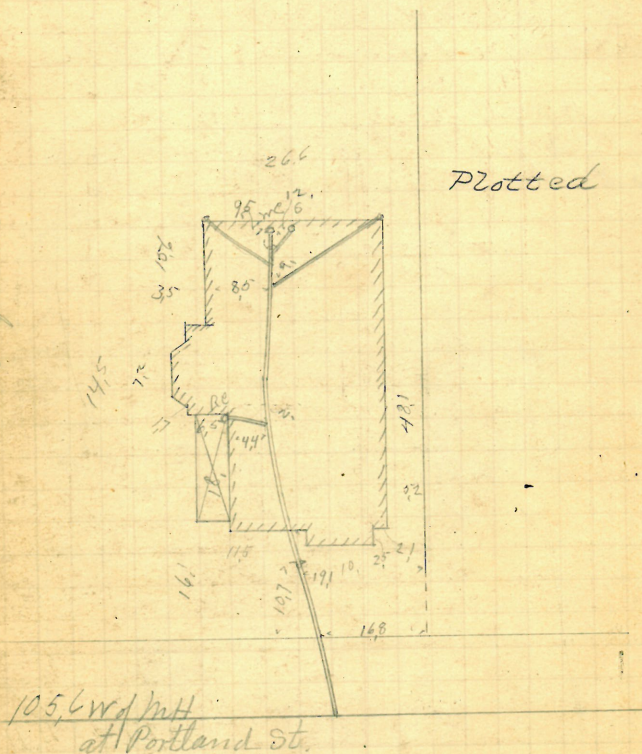


28, 10/3 10/4
 Angell St.

Brook St.

Josie S Leonard Wife of Thom
 #71 Providence St
 Jason A Blackman DZ
 Permit 5092
 V Cut at curb 10.
 Opened Aug 1 - 1888
 Closed " 6 - 1888

6" from sewer



GONE

43

Bernard G. Martin

236 Plain St.

Jason A. Blackmar D.L.

Permit 5093

Cent at curb 10.5

Opened Aug 4-1888

Closed " 6-1888

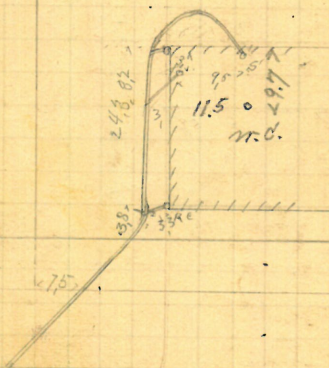
Reopened June 25-1906

Closed " 25-1906

J. Deary D. L. ~

5" from curb

Plotted.



347 S. of 17th

"Blackstone

Plain St.

Eliza F. Walsh

429 Wickenden St next eq. 3.

John Keogh D.L.

Permit 15096

Out at curb. 12.5

Opened Aug 16-1888

16/10/88 - 17-1888

For Ex. Work done under this

Received June 14-1921-

See B.R. 2249 No 136-

Plotted

Wickenden St.

3098

L 46112 Sept 27-1907

Ent Eben Simmons
Saval Rubber Works

388-392 Eddy St

Reopened Sept 26-1907

Closed " 28-1907



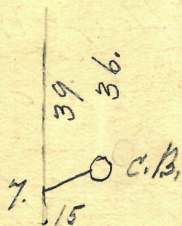
Ed. Corwin May 12-1905

660
47V

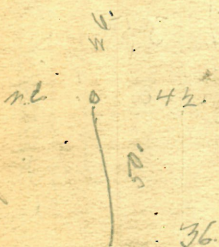
Eddy Street

Exp Work - Oct 7 - 1944

Boiler
Room



Eddy St.



Boiler Room

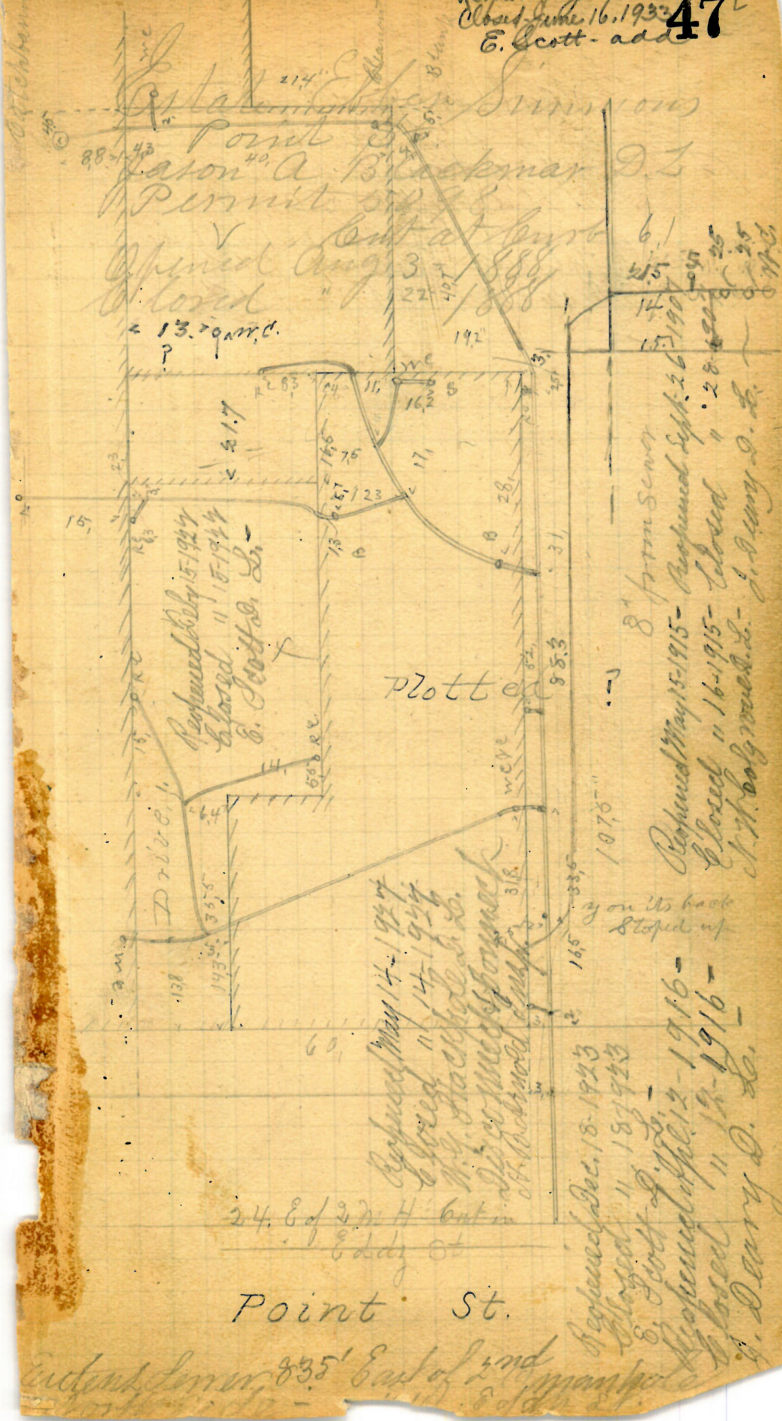
Point St.

Entrance to
Hall of Plant

Exp Work Feb 13 - 1944

about June 16, 1932
E. Scott - add

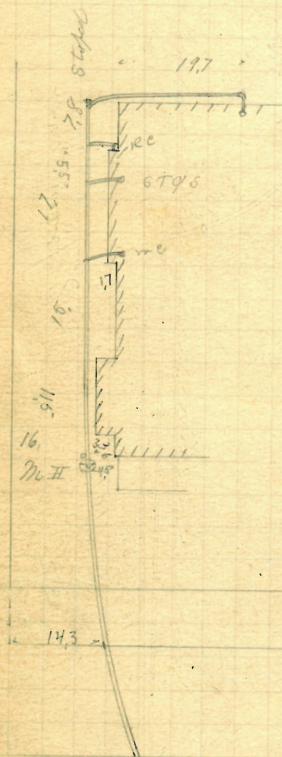
47



48^v

GONE

Walter J Comstock
 250 Parkis Ave.
 J Frank Read, D.L.
 Permit 2099
 Cut at curb 10.5
 Opened Aug 9-1888
 Closed " 14-1888



Plotted

76. W of 4th St.

Broad St.

Parkis Ave.

GONE

49

47-51

168-170

Amson & Potter
Pearl St.

Bernard Brady D.L.

Permit 5-100

Opened Aug 10-1888

Closed " 14-1888

Ref " July 16-1889

Reopened June 6-1905

Reopened " 7-1905

W. Edgemoor D. L.

See Book 772 p. 115

GONE
#51

GONE

Plotted

Reopened 8-1922
Closed 11-1922
E. E. Little D.L.

Pearl St.

47.3 W of 3rd N H
Pearl St.

2
0

49 Land St.

114^A new

Charles H. Eastwood
13 - Pettis St.
John Hoogh D. L.
Permit 5-101
V Cent at lens 9.6
Opened Aug 15-1888
Closed " 15-1888

6" from sewer-

A hand-drawn diagram on aged paper showing a curved path. The path begins at the top left corner, moves horizontally to the right, then curves downwards and to the right, ending near the bottom right corner. Several numerical annotations are present:

- 297**: Written vertically on the far left.
- 80°**: An angle measurement at a bend in the path.
- 113** and **101**: Numbers near the upper part of the curve.
- 247**: Written below the lower part of the curve.
- 14°** and **47°**: Angle measurements at the bottom right.

The diagram also includes a hatched rectangular area on the left side and various other markings like "PC" and "S".

95,3 No of 2M4
" Walling

Pettis St.

Removed

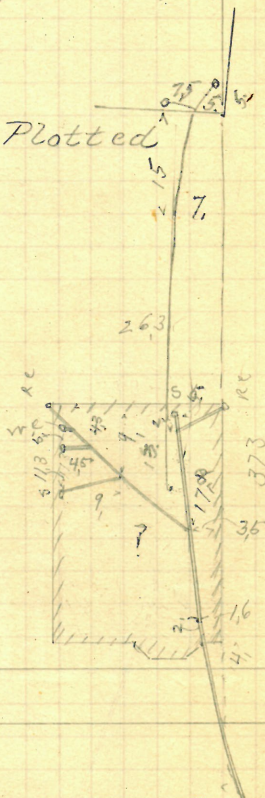
Patrick Conley
99 Langley St.
Bernard Brady D.L.
Permit 5-1057

Opened Aug 17-1888
Closed " 18-1888
V Cent at first 9.

Reopened Sept. 1926
Closed " 1926
G. Piccitelli D.L.

Plotted

From Description



3rd Case from center

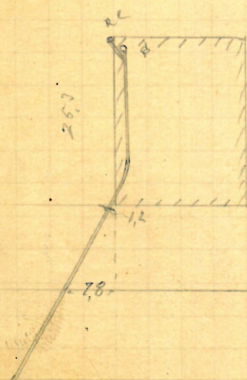
222 W of 3211 H

Hospital St.

Langley St.

Boston & Prov R.R. Co.
 Old Colony " " Lease
 of India St.
 of Frank Read, D.L.
 Permit 5166
 V Cut at burst 8.5
 Opened Aug 21-1888
 Closed " 22-1888

Plotted.



25, W of 3 M H
 " V River

India St.

58

Removed

Virginia & Garrett H Winter
 next north of Camp St. rd of Clun
 John Knight D.L.
 Permit 5709

Opened Aug 24-1888
 Closed 25-1888

Plotted

27.3

6" from center

44.3

98

135

31.5 of 52 in H

Liffitt St

Camp St.

John H. Stiney
 #210 Governor St.
 Bernard Brady D.L.
 Permit 5110

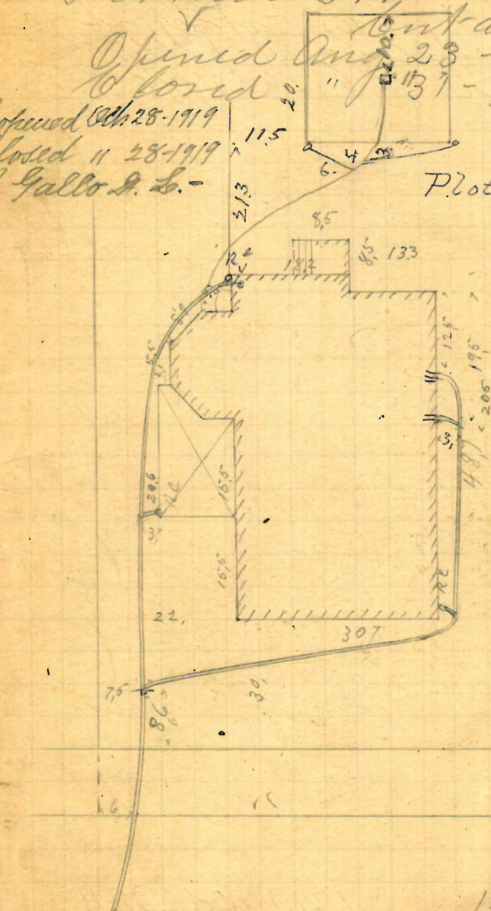
Opened Aug 23 - 1888
 Closed " 137 - 1888

Reopened Oct 28 - 1919

Closed " 28 - 1919

P. Gallo & Co.

Plotted

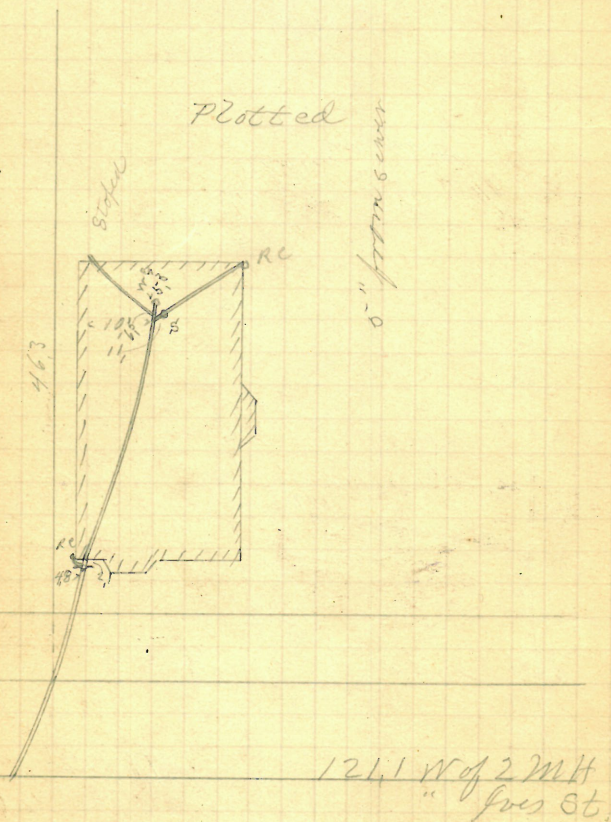


1271 N of 2 M H
 Waterman

Governor St

60✓

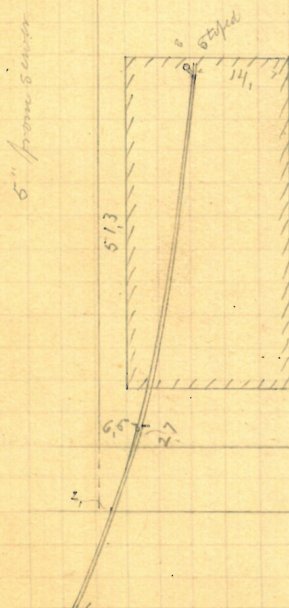
Hous. of Albert N Humphrey
 173 Williams St.
 J. Frank Read D.L.
 Permit 5-111
 V
 Opened Aug 24-1888
 Closed " 28-1888
 cut at cost 105



Williams St.

Ruth M. Bisworth
 175 Williams St
 Frank Read D Z
 Permit 51/2
 Y cut at curb 10.5
 Opened Aug 23-1888
 Closed " 27-1888

Plotted

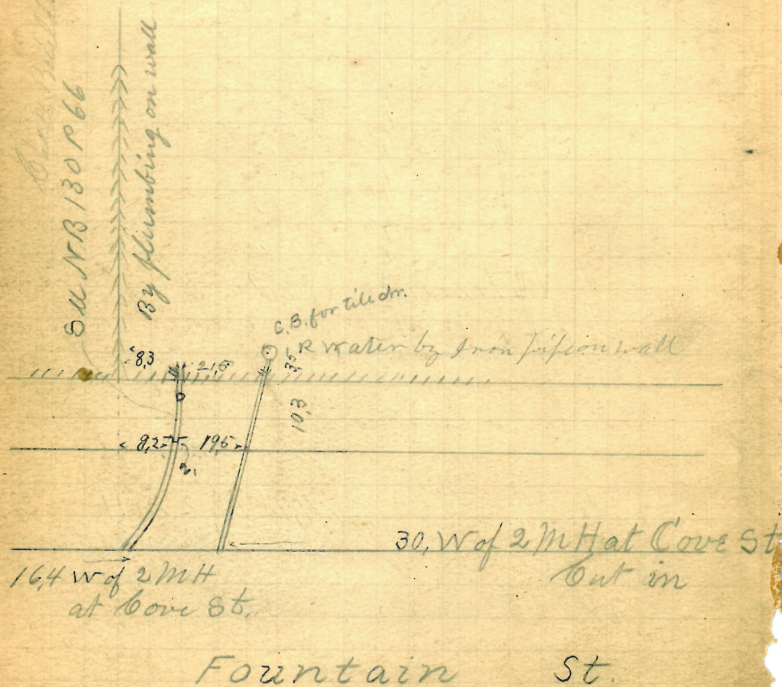


74.9 W of 2 m H
 Pres St

Williams St.

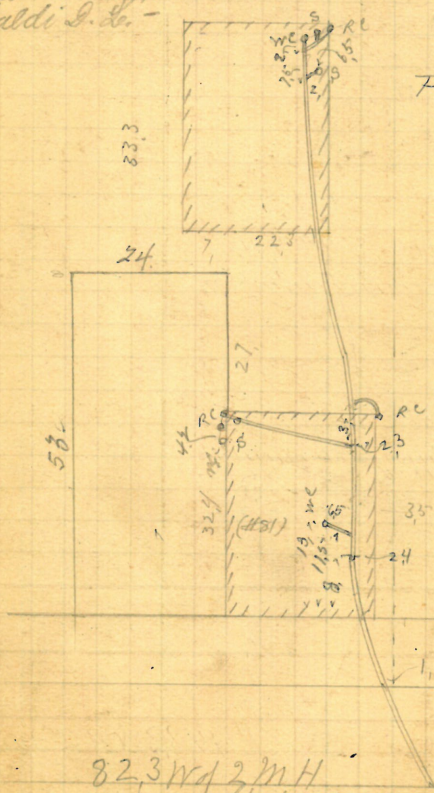
Allen Crane
 Fountain St.
 Bernard Brady D.L.
 Permit 5113
 V Cut at curb 7.1
 Opened Aug 25-1888
 Closed " 27-1888
 Reopened Jan'y 9-1919
 Closed " 1919
 W. Doherty D.L. - Cleanout

Plotted



George Duckworth
 #81-83 ⁷⁶ Carpenter St.
 Jason A Blackman D.L.
 Permit 5-1-4
 Cut at curb 10.1"
 Opened Aug 25-1888
 Closed Sept 1-1888

Reopened Mar 13-1922
 Closed 11-14-1922
 J. Cafaldi D.L.



Plotted.

82.3 W of 2 M H
 " Shepard St.

Carpenter St.

282 Josiah Walshaw
 772 Williams St.
 Frank Read D.L.
 Permit 5-115

Opened Aug 29-1888
 Closed " 30-1888
 Cut at least 100'

Reopened-Dec 21, 1934

Closed-Dec 24, 1934

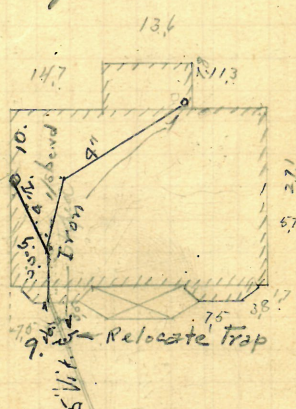
A.P. Meadus-Clear-relay 4" I

Reopened-Sept. 8, 1937

Closed-Sept. 8, 1937

1. Lammens-Add 4"

Stack-Clear-Relay-I.4"



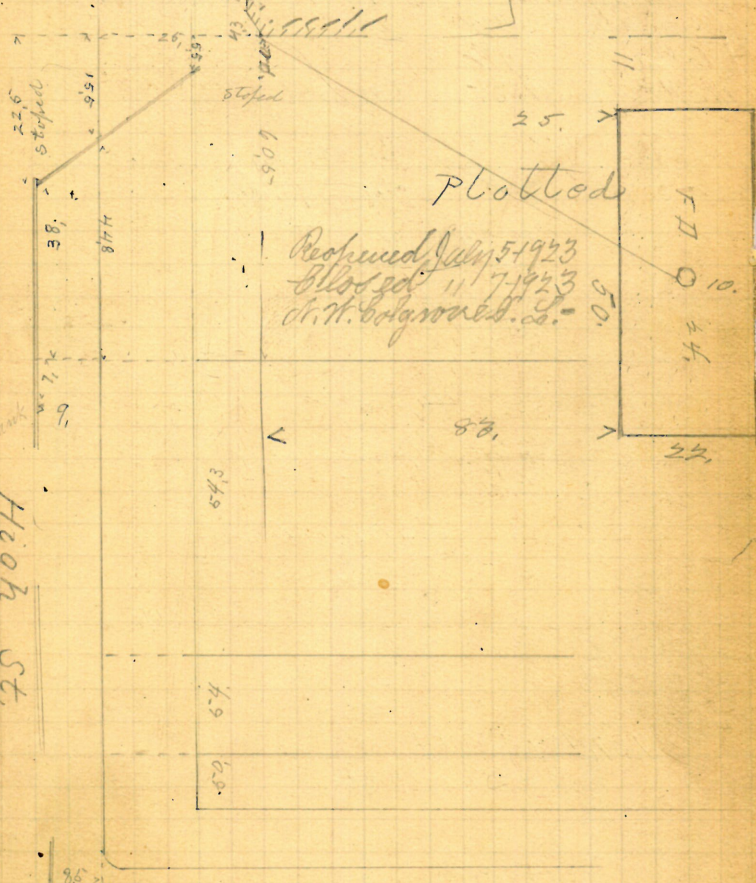
148.3 W of 2nd H
 1st Ave St.

Williams St.

65

Opened Aug 31 - 1888
Closed Sept 7 - 1888 See 3391-120

Group End of row 6, w/ last bit of 12 & 13



Almy, St.

George L. Barnes
 Billings Bros Lessee
 19-25 Eddy St. near Worcester St
 D. Holmes & Co D L
 Permit 5118
 Cut at curb 6.15"
 Opened Aug 31-1888
 Closed Sept 8-1888

5" from curb

Plotted

Worcester St.



Eddy St.

P. $\frac{158}{25}$

#54 Cypress St.

John Keogh DL

Permit 5119

V but at least 9.

Opened Aug. 31 - 1888

closed Sept. 1 - 1888

Received Jan'y 20-1919

Closed 1919
Hill & L. H. Thomas

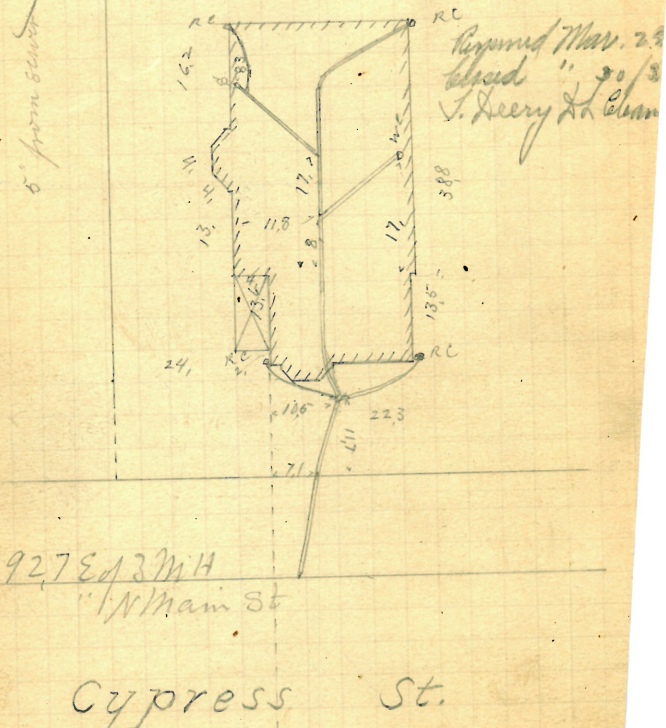
Closed
A. Mello & L. Cleanout

Reopened July 18, 1927

Closed July 18, 1927

B. Roberts, Pleasant —

plotted



Geo H. Taft & Wife
 5 Myrtle St
 Bernard Brady D L
 Permit 5120

Opened Sept 3-1888
 Closed " 5-1888
 Tent at curb 10.2"

Reopened Dec. 14th 94

Closed Dec. 14th 94

Cleanout

Reopened May 5-1914

Closed " 11-1914

A. W. Holmwood L. Cleanout

Plotted

Reopened July 21

Closed " 23/30

Thomas Deery D L

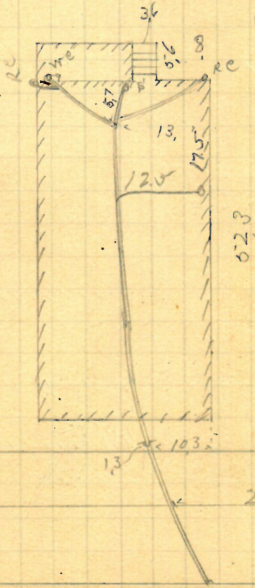
Cleanout

Reopened June 8, 1931

Closed " 11/16

A. B. Burchard D L

5" from curb



5.23

27

138 W 1/2 M 1/4
 Pine St.

Myrtle St.

70^v

IF

245

#49

Asa N Green
 Lockwood & Cor West Clifford
 Jason A Blackman DZ
 Permit 5/2/

Opened Sept 3 - 1888
 Closed " 4 - 1888

reopened Aug 25/93 } E. F. Carey, D.L.
 closed 27 " }

10 Reopened - Oct. 6, 1937

15 Closed - Oct. 6, 1937

T. Simmons. Ch. sp. siden.

5" from sewer



Lockwood St.

58, E of M.H.
 W of Lockwood St.

West Clifford St.

72^v

40 Dartmouth Ave.

Mary A. Whitaker Wife of Stephen

#40 28 Lawrence St.

Bernard Brady DL

Permit 5123

Opened Sept 6-1888

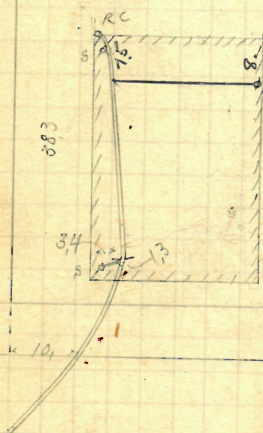
Closed " 7-1888

5 Reopened - May 22, 1936

Closed - May 22, 1936

J. Fitzpatrick - Odd 4" St.

Plotted



5" from street

1.4 W of 4.7 MH
BroadLawrence St.
now
Dartmouth Ave.

28 Haskins St 73

Mary A Sanborn wife of Andrew J

Bernard Brady DZ -

Permit 5124

Opened Sept 7-1888

Closed " 10-1888

Reopened Sept 7-1924

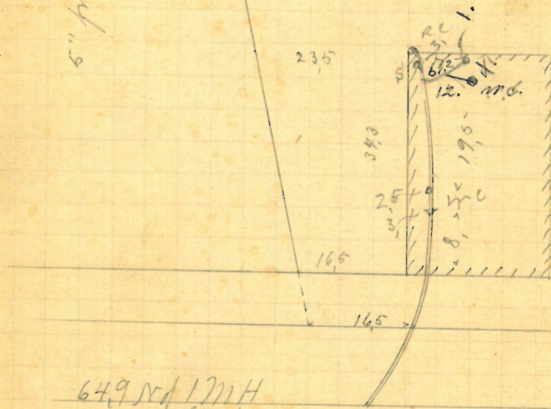
Closed Sept 7-1924

P. S. Geary & Co. -

4" Iron Pipe -

Plotted

5" from center



649 N 17th

" Lockwood St.

Spring St.

436

Volney W Mason & Co Et al
~~#400~~ Washington St S.E. cor 2nd & L
 J A Blackmar DL
 J Permit 5-125
 VV Tent at Court 102
 Opened Sept 5-1888
 Closed " 8-1888
 " " 1889 by Roady

Received May 23-1906

Closed by 23-1906

V. Famiglietti D. L.

Proposed June
by J. A. Blackman
to add WC

Plotted

Propped

Lafayette St.

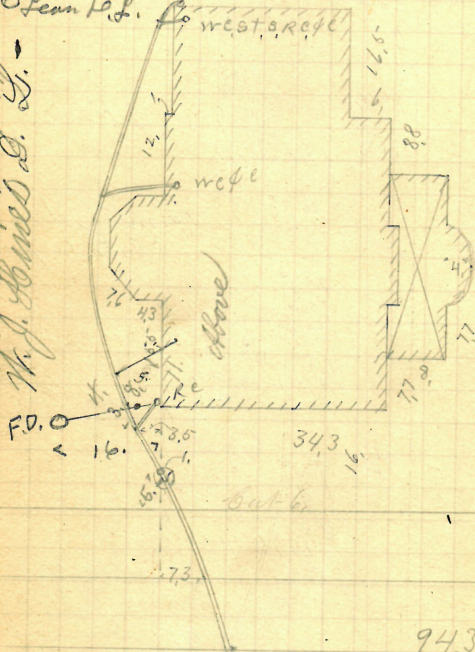
134,1 W of 6 N.H.
" Dean St.

Washington St.

GONE

Reo June 5 1947
Clo June 5 1947 6/5/47
add 1st in Lewis Co. RE

Prepared Apr. 20-1946
Witnessed " 21-1946
W. J. James D. J.



Plotted

94.3 E of 2 MH
at H of St.

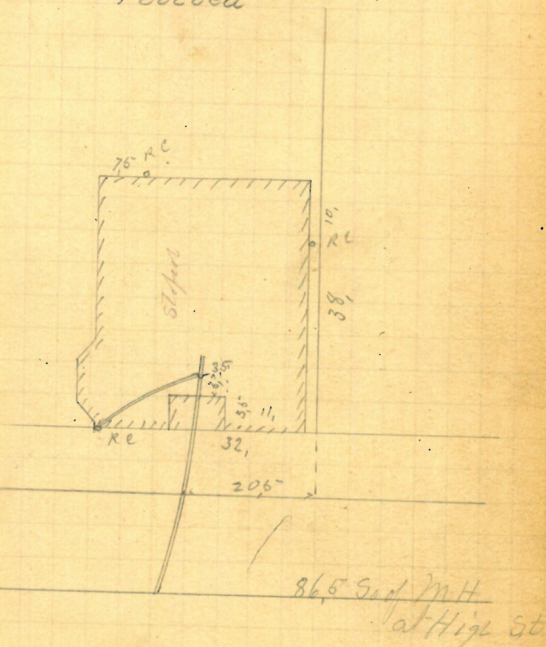
Young Orchard Ave.

Wm J Hayward
 Hammond, St.
 Frank Read D.L.
 Permit 5128

Opened Sept 14-1888
 Closed " 15-1888

4" from sewer

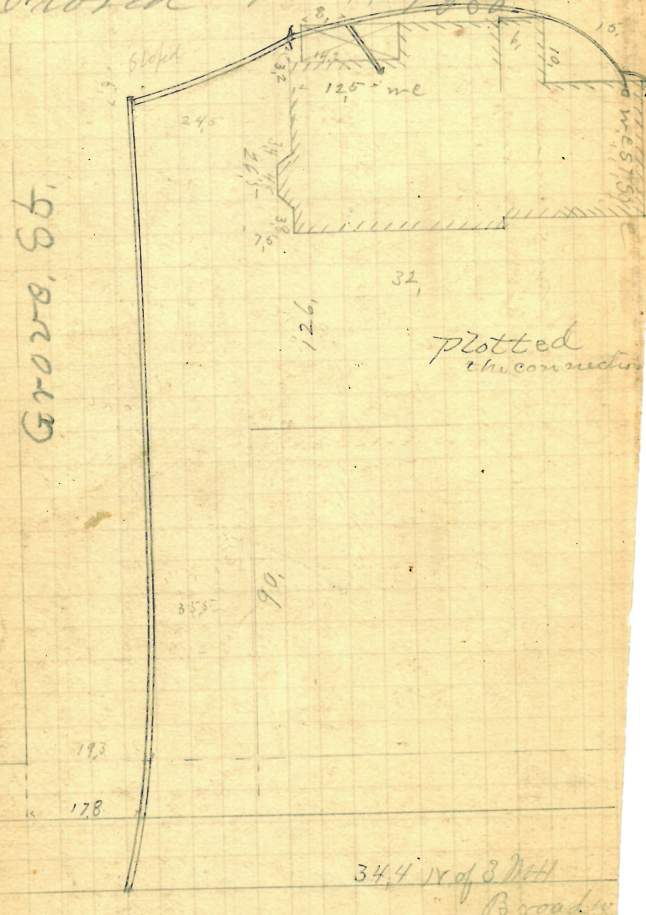
Plotted



Hammond St.

78^v

David E. Rounds
 #25 Grove St.
 J. Frank Read D.L.
 Permit 5129
 V. Ent at curb 10.5
 Opened Sept 14-1888
 Closed 19-1888



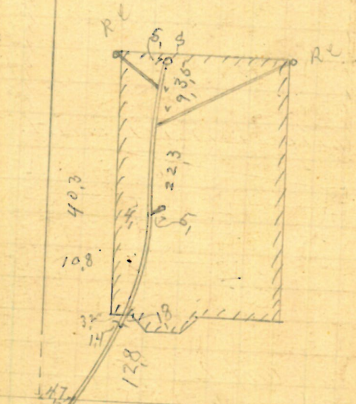
Vinton St.

Wm J. Mancy
~~#4060~~ Chester Avenue
 Bernard Brady D.L.
 Property 5130

Opened Sept 15-1888
 Closed " 17-1888

Plotted

5' from Blue



Chester Ave.

80

H 167-31

Charles Warren L. Pitt
 #7 Young Orchard
 John Keogh D. L.
 Permit 51310-5132

Opened Oct 5-19-1888
 Closed Oct 11-10-1888

Reopened Nov. 14-1901

Closed " 15-1901

W. E. Danenport D. L. 15

Reopened Jan 15-94

Closed " 15-94

D. Phillips D. L. D. L.

Reopened Oct. 15-1904

Closed " 18-1904

D. L. Phillips D. L.

Plotted

9.8

Plotted

Blind Driveway

Opened Oct 2-1888
 Closed " 6-1888

85° 7' Centre of driveway

Cut 11.2'

139.5 E of 2 M H

73 E of 2 M H

at Hope Ct.

No 1

Young Orchard Av

~~SEE FLYER~~

Add C.B. conn. into
M.H.

D.L.A. Ricci (Relay with 8" Vit.-St. to Prop. line)

SIZE

OPENED - 10-4-57
CLOSED - 11-22-57
Prop. 111

4" IRON
6" IRON

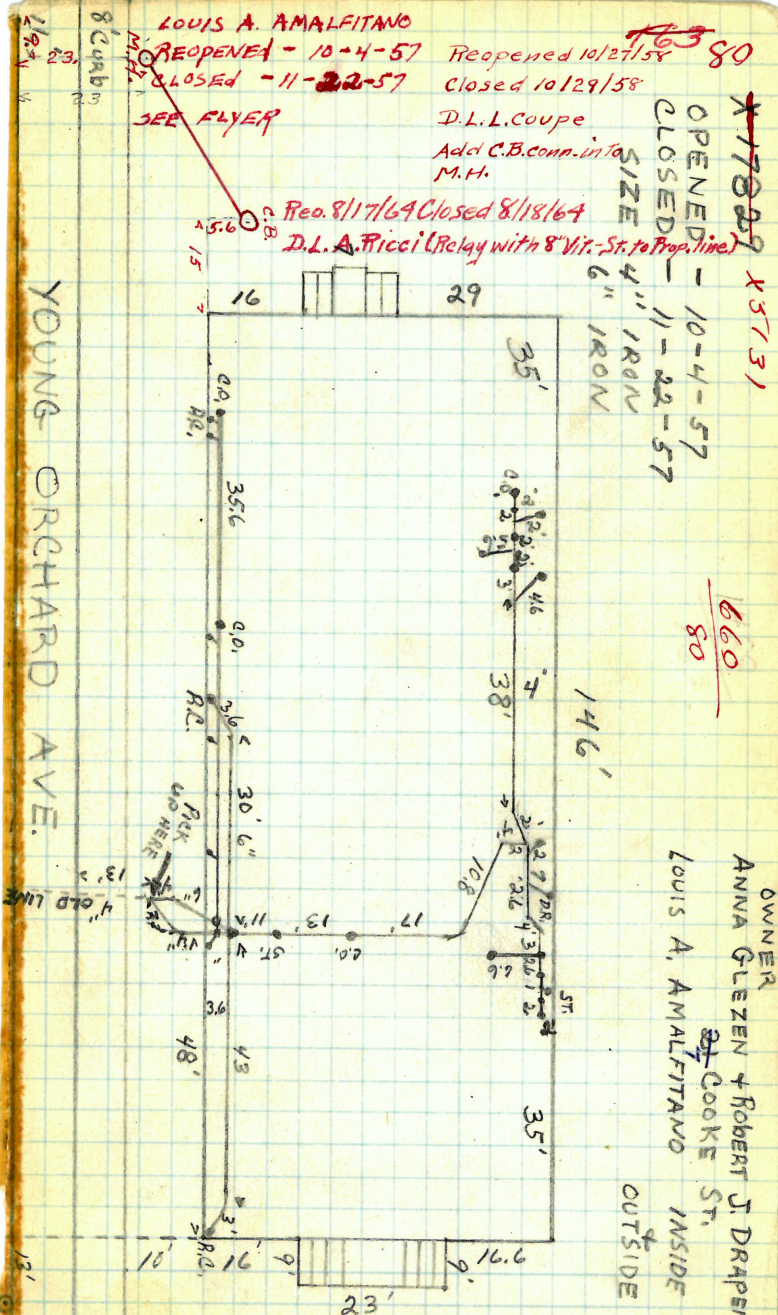
146

08/09/99

OWNER
ANNA GLEZEN + ROBERT J. DRAPEN
~~ST~~ COOKE ST.
LOUIS A. AMALFANO INSIDE
OUTSIDE

YOUNG ORCHARD AVE.

21 COOKE ST.



48-38 Charles H. Smith
Pleasant St.

Daniel J. Duggan D.L.
Permit 5133

✓ Cut at curb 78

Opened Sept 29-1888

Closed Oct 8-1888

Reopened & Closed Oct. 25, 1890

C. W. Colgrove D.L.

For E. Work done under this Permit

Chas 81199 See Book 592 Pg 117.

Reopened - June 8, 1936

Closed - June 15, 1936

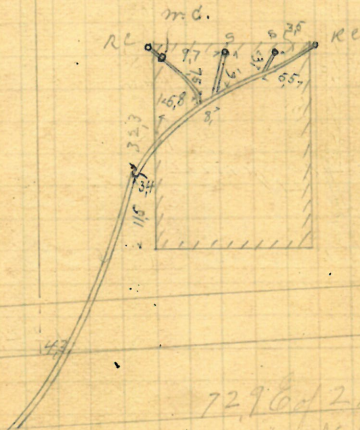
J. Morris - Open Street
& Sidewalk - Relay I.

Reg No 7/32

At

H. Bannan D.L.
Chas

5" from sewer



Pleasant St.

90

Patrick Morrin
 68-Pleasant NE Cor Padelford
 Jason A Blackmar &
 Permit 5134

Opened Sept 19-1888
 Closed " 26-1888
 V Cut at curb 9.5

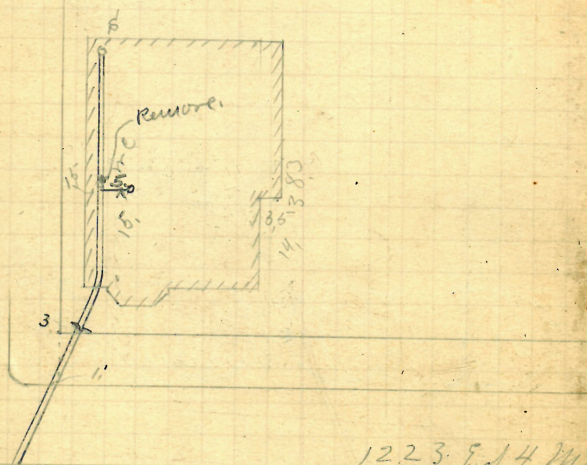
Reopened - Nov. 13, 1936

Closed - Nov. 13, 1936

C. Allen - Remove W. C. Add.

Plotted

Padelford St.



12.3 E of 4 M.H.
 " N Main St.

Pleasant St.

Removed

85

Edward McLaughlin & Wife

32 Bates St.

Bernard Brady D Z -

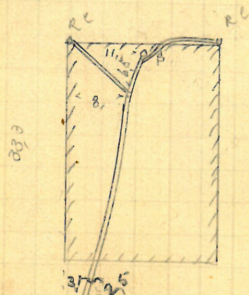
Permit 5-1877

Opened October 4-1888

Closed " 6-1888

Plotted

5" from sewer



9.11 E of M H
at Curve

Bates St.

86^v

Henry J. Smith & Est. Eliza G. Smith
 80 Olive St.
 of Frank Read D.L.
 Permit 5138

Opened Sept 20-1888
 Closed " 22-1888
 V Out at lens 10.4"

Reopened Aug 9-1920

Closed 11 12-1920

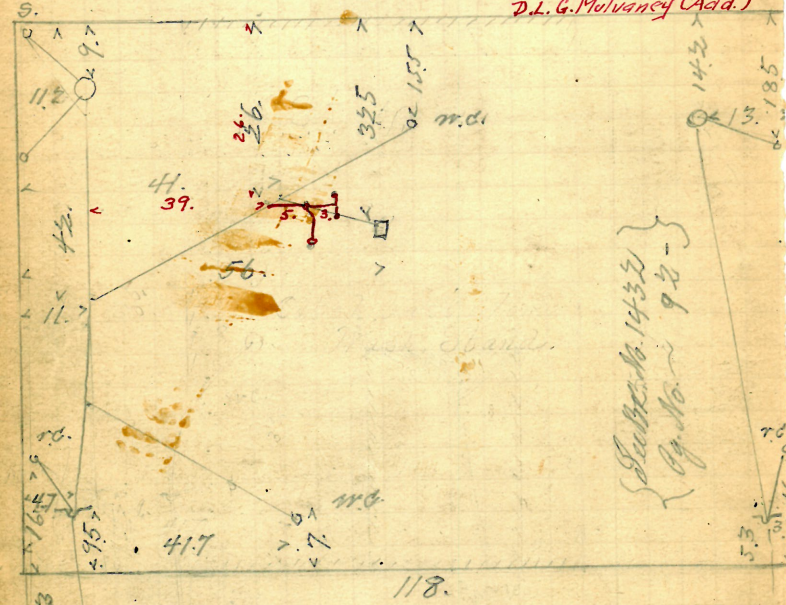
E. Gibbons D.L. - Plotted

- 5" Pipe from corner -

Reopened 11/8/61

Closed 11/8/61

D.L.G. Mulvaney (Add.)



{ Subsec. No. 1432
 Cy. No. 92 }

74 W of 2nd St.
 Thayer St.

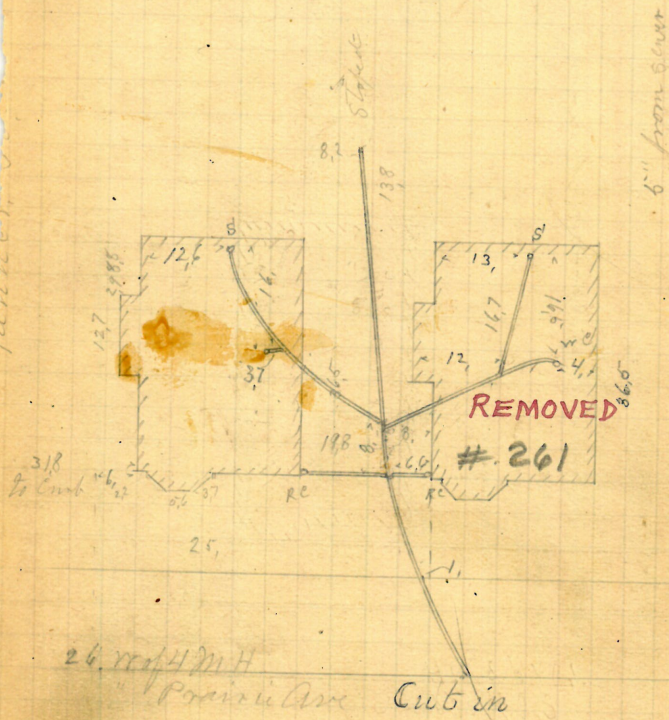
Olive St.

P - $\frac{157}{18}$

87²

Edward G. Burrows Jr
NE Co Dudley Geo Lanner
Bernard Brady D.L.
Permit 5139
Cut at curb 10.3"
Opened Sept 20-1888
Closed " 27-1888

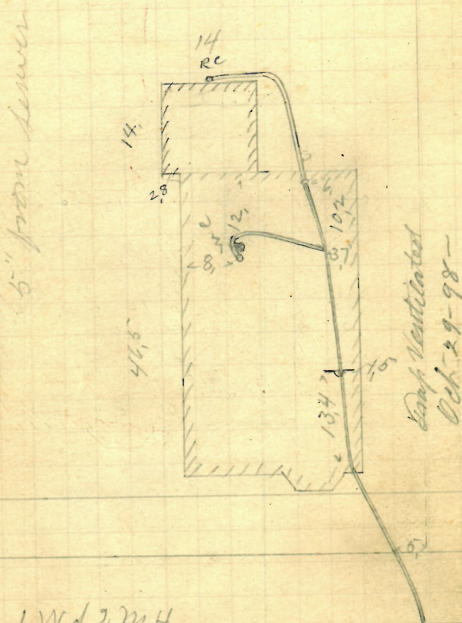
Plotted



88 ✓

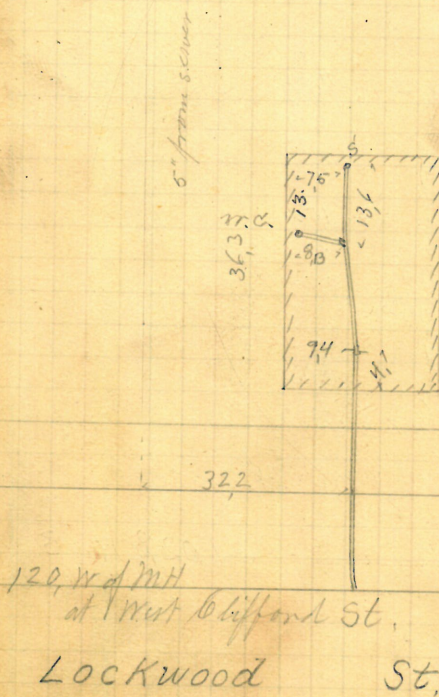
88
W W H Cannon
#57-59 ~~29~~ Wilton St.
J Frank Read D.L.
Permit 5148
V Cut at burst 10.5
Opened Sept 24-1888
Closed " 25-1888
Reopened Oct " "
Reopened + Closed Oct 29 98
J. F. Read D.L. - Trap Ventilated

Plotted



Nicholas W Medbury
 54 + 24 Lockwood St.
 Jason A Blackmar D.L.
 Permit 5141
 Out at curb 9.5
 Opened Sept. 27-1888
 Closed " 28-1888
 Reopened Oct. 4-1904
 Closed " 5-1904
 C. P. Brennan D. L. —

Plotted



90^vREMOVED

32 Coddling St.
 J. Frank Rutledge D.L.
 Permit 6142

V Bent at Curve 10.4
 Opened Sept 27-1888
 Closed " 28-1888

Reopened & closed Nov. 11-1905

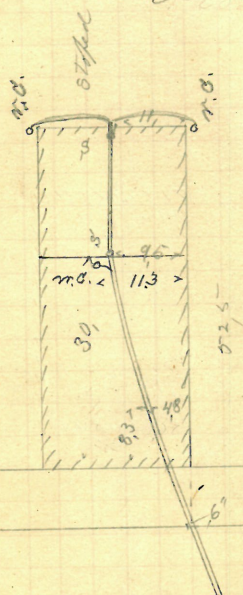
Geo. F. Lewis D. L. - R. E. -

Reopened April 18-1910-

Closed " 18-1910-

J. T. Milner D. L. -

5" from 8" curve



Plotted

1028 No 3 11/11

" 10/11/11

Coddling

St.

X 5/42

90

Irus A. Franklin
44 Codding St.

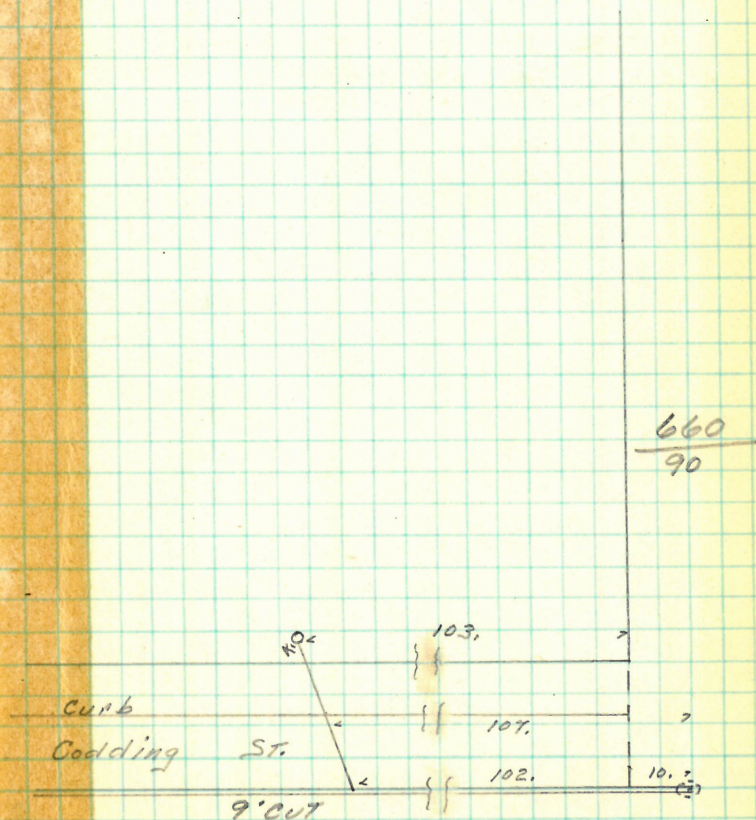
opened 10/30/50

Closed 10/30/56

Size 6" Vit, 4" Iron

T.A. Gammino

Open Street



Crosses Curb 107. West of 3rd M. Hole
West of Cranston St.

P 168
26

REMOVED

91

Thomas R Briggs

#422

N. E. Cor. Lester Cor Knight

f Frank Read D. L.

Permit 5143

cut at least 10.

Opened Sept 28-1888

Closed Oct 4-1888

Reopened Apr 18, 95

Closed Apr 18, 95 } m.c. added

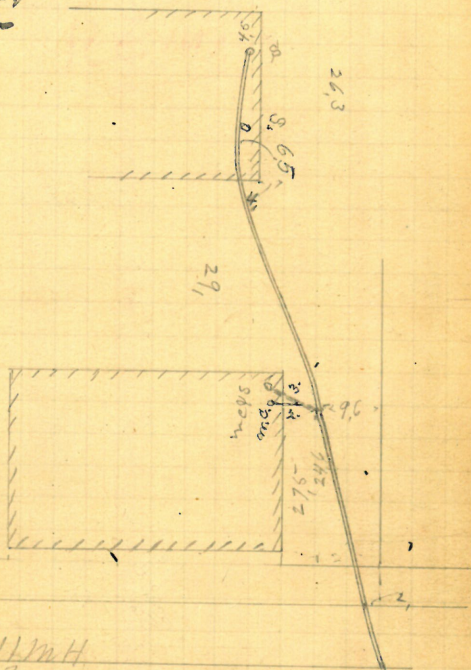
Reopened Dec. 14, 1905 } Plotted J. F. Read D. L.

Closed " 14, 1925

J. F. Read D. L.

Knight St.

6" from sewer



407 W. 1st St.

Minnesota St.

Lester St.

Estate Nathaniel Stearns
 # 67 Clemence, Cor Worcester St
 Bernard Brady DL
 Permit 5-144
 V sent at curb 6.7
 Opened Sept 27-1888
 Closed " 27-1888

Worcester, St.

5" from sewer

Plotted



29.8 S of M.H.
 at Worcester St.

Clemence St.

Estate Ephraim B Moulton
L. Benj. W. Remington.

30 Lawrence St.

Jason A Blackmar D.L.
Permit 5148

Permit 5148.

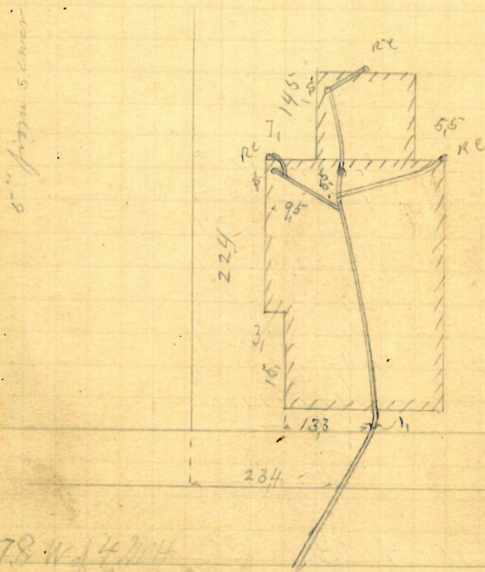
Opened Oct 1 - 1888
Closed " 9 - 1888

Cloud " 9-1888

Reopened & Closed Nov. 11th 99

W. A. Chadsey & L. - Clearout -

Plotted



578 Wed 4 Nov 14

Lawrence St.
now
Dartmouth Ave.

Estate Ephraim B Moulton
 & Benj. W Remington
 32 Lawrence St.
 Jason A Blackmar DL
 Permit 5-49

Opened Oct 2-1888
 Closed " 9-1888

For E. Works done under this Permit

May 5-1897 See Book 712 Pg 79-

Resurveyed Nov 6-1913

Closed " 7-1913

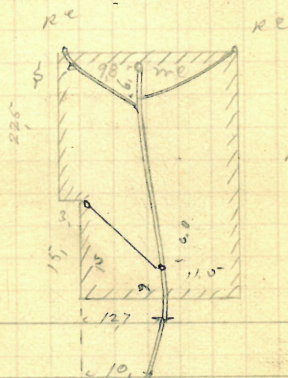
W. A. Chadsey & L. E. Cleaveland

Reopened Dec 2, 1931

Closed " "

See 1. Parton Ltr

5-4 from 5-49



Plotted

96.3 W of 4 MH
 " Broad St.

Lawrence St.
 now
 Dartmouth Ave.

Michael Giblin #114
 Pleasant Egr East Avenue
 Frank Road 2L
 Permit 6-16-1

Opened Oct 23-1888
 Closed " 31-1888

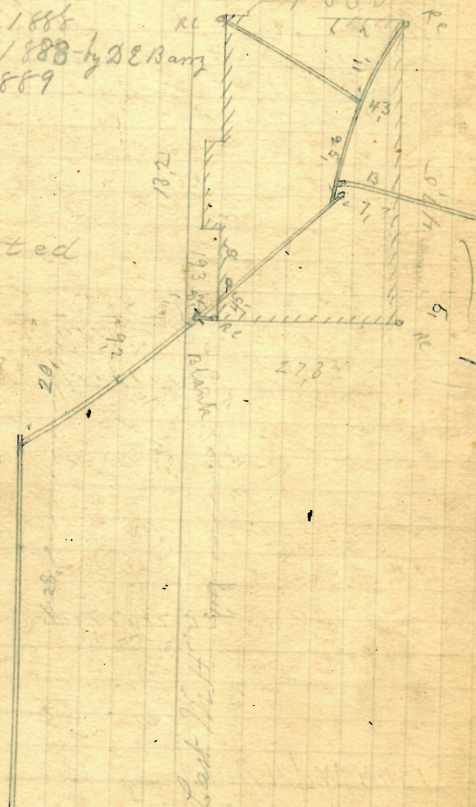
Reopened Dec 3-1888

Closed " 8-1888 by DE Barry

Reopened Sept 9-1889

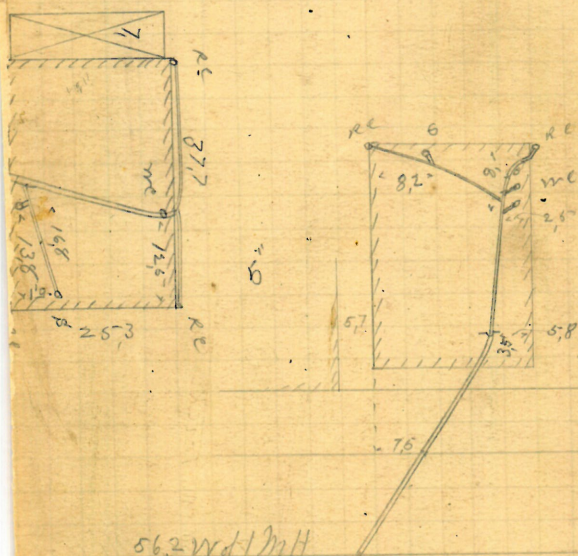
Plotted

Pleasant St.



Dennis Casey & Wife
 3733 Wickenden St.
 Bernard Brady D.L.
 Permit 5152
 V - Cut at least 7.5"
 Opened Oct 3 - 1888
 Closed " 3 - 1888

Plotted

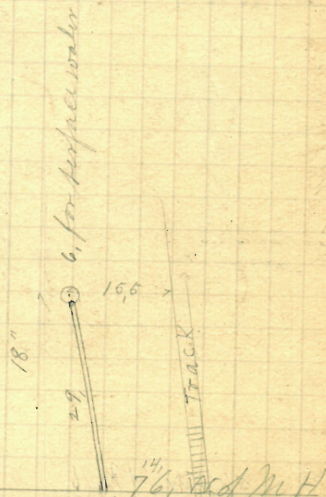


56.2 W of 1 M H
 " Gros St.

Wickenden St.

Prov. & Worcester R.R. Co
 Ashburyton St
 J. Frank Read D.L.
 Permit 5-15-3
 V Out at Cyst
 Opened Oct 4-1888
 Closed " 13-1888
 For Ex. Work done under this
 permit chps 19-1902. see Book
 No. 1432 Ch. No. 87 -

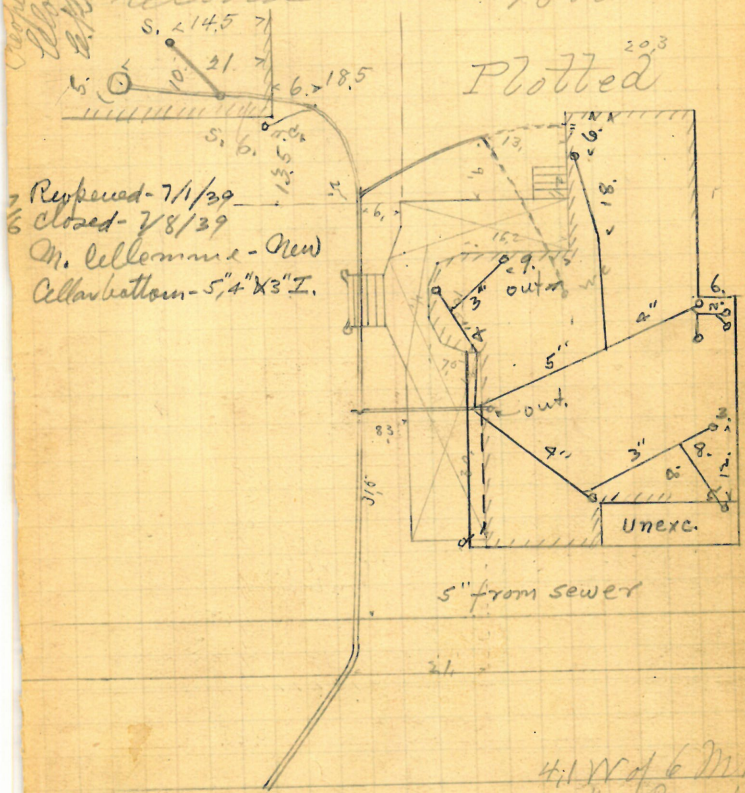
Plotted.



On Land of Worcester R.R. Co
 into Ashburyton St
 76' of M.H.
 at Ashburyton St

Received Sept 25-1902
Filed 11-29-1902
E. P. Blackman & Co.

Mary E Darol Joseph Darol
48 Parkis Avenue
J Frank Reed D.L.
Permit 5154
Y Cent at curb 10.
Opened Oct 8-1888
Closed " 11-1888

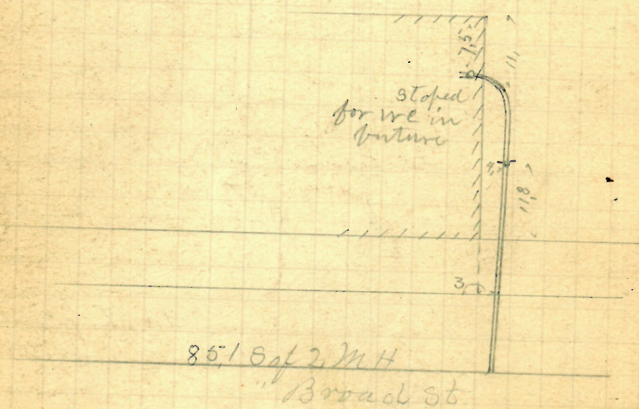


Parkis Ave.

Francis A. Darling
 13 Claverick St.
 Patrick Gurney D.L.
 Permit 5155
 Cut at emb 10.
 Opened Oct 8-1888
 Closed " 10-1888

Plotted

6" from corner

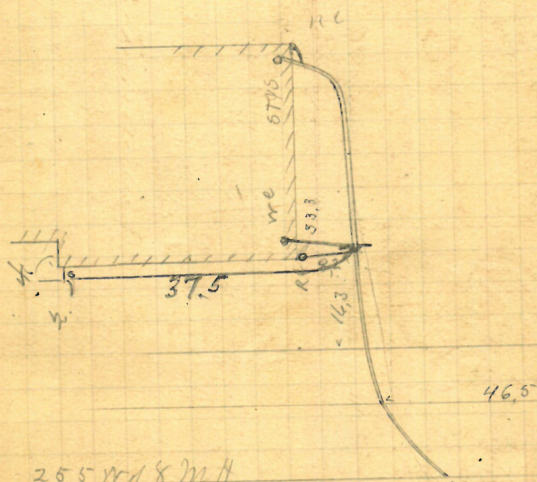


Claverick St.

Ann C. Wright
 Lawrence, Cor. Greenwich
 Jason A. Blackmar D.L.
 Permit 5-15-6
 V cut at curb 104
 Opened Oct 10-1888
 Closed " 11-1888

Reopened by B. Brady to relay + to add wc.
 Reopened Sept. 30-1910 June 3/91
 Closed Oct. 1-1910
 W. C. Chadwick D.L.

Plotted



25.5 w of 8 M H
 Broad

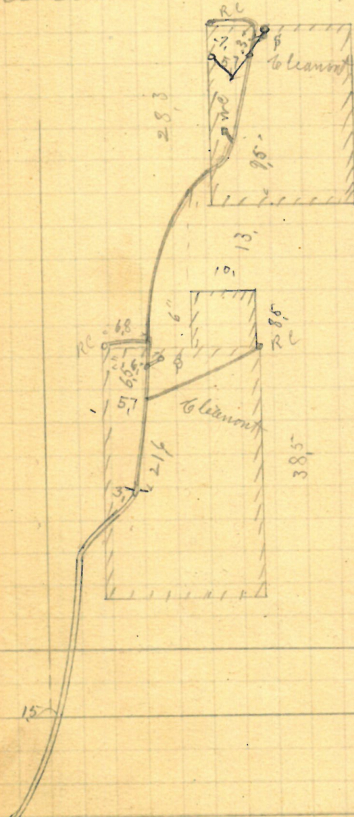
Lawrence St.
 now
 Dartmouth Ave.

291

5 1/2

Edward B. Webb
 177 Williams St
 Thomas Phillips & Co D Z
 Permit 515-8

Opened Oct 9 - 1888
 Closed " 19 - 1888



Reopened Mar 27. 1934
 Closed Mar 28. 1934
 M. J. McCormick add 241

Protected

196 W 12th St
 12th St.

Williams St.

Henry A. Prange & Others
 E. Cor. Mathewson & Westminster
 Frank Read, D. D.
 Permit 6-15-9

Opened Oct 11-1888
 Closed " 12-1888

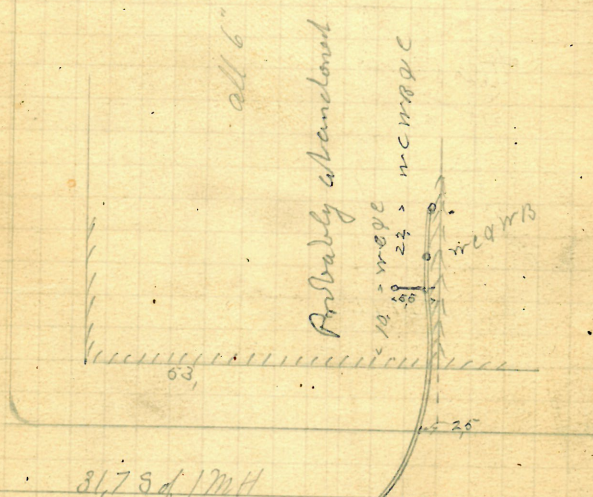
Reopened Dec. 13-95
 Closed " 13-95 P. Turner, D. D.
 Used old drain for running water out of cellar

Plotted

Probably abandoned

Sec 1160
 80-81

Westminster St.



Mathewson St.

City of Providence School House
State St.

Stato Et
Jason A. Blackmar D L
Permit 5160

Jason A. Blackmar D L

Permit 5160

Opened Oct 11 - 1888

but at least 99

Closed " 18-1888

Reopened Aug 6th 96

Respected Aug. 31, 96

Closed " 11 11 26

Closed Sept. 24 96

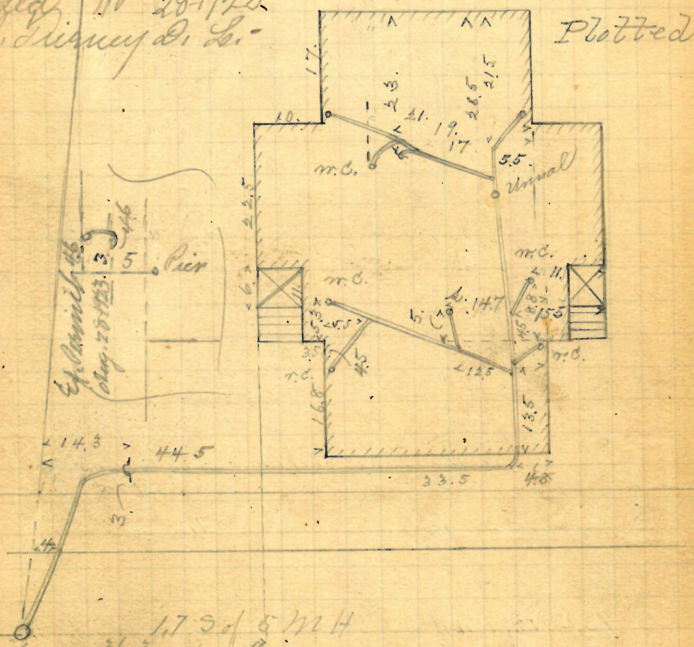
J. W. M^d auf d. L.

H. R. Chadsey & L.

Revised Aug. 28 1923

closed 11 28-1923

J. J. Quincy D. L.



State St.

108^v

Removed

Union Oil Co
Ives & W Co Yorknotton
J Frank Read D Z
Permit 5161

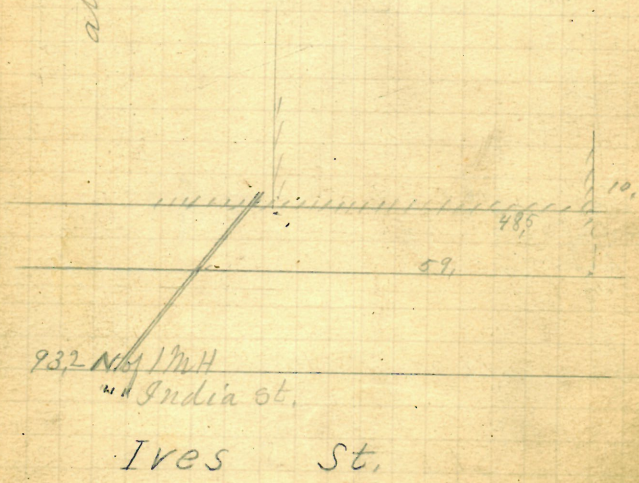
Opened Oct-12-1888
Closed " 13-1888
6 at at Gurb 9.5

Plotted

all 6"

by Geo. W. W. W.

Yorknotton St.



~~Removed~~

Union Oil Co.
Ives Geo. Perry D. L.
Permit 5162

Opened Oct 15-1888
Closed 17-1888

Blawie

Reopened March 14-1907
Closed " 21-1907
P. A. Perry D. L.

Reopened April 15-1907
Closed " 16-1907
P. A. Perry D. L.

Reopened Dec. 14-1908
Closed " 14-1908
P. A. Perry D. L.

Mend + Relay



Plotted

Reopened Oct. 28-1914
Closed " 1914
P. A. Perry D. L. - Relax.
Reopened Sept. 7-1915
Closed " 1915
S. E. Wessinger D. L. - Alcomont

Reopened Aug. 3-1914
Closed " 1914
P. A. Perry D. L. - Alcomont

Reopened 1-1918
Closed " 1918
S. E. Wessinger D. L. -
Alcomont

Enters Millip India 81-

Ives. St.

John J. Mahady
21 Persill St

2.

~~basail St~~

Brooklyn, N.Y.

Jason A Blackmar DZ

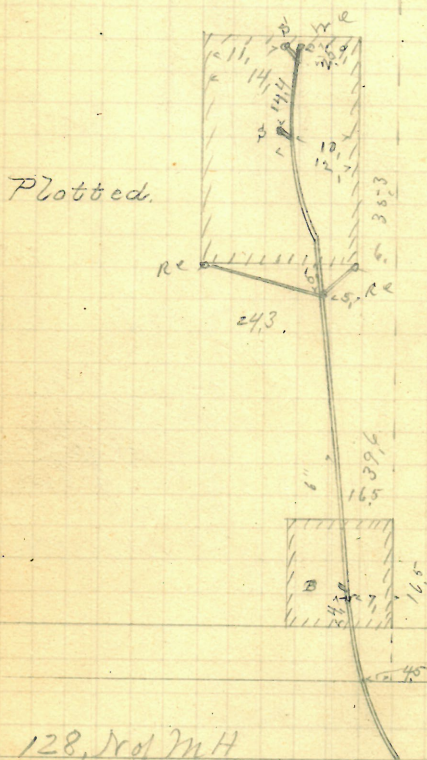
Permit 5163

✓

Cent at Cent 10,8

Opened Oct 12-1888

Clond " 15-1888



128, No 1 M H

at Fountain St

Cargill St

Brooklyn St

George Jefferson
Brighton St
Bernard Brady D.L.
Comm't 5-16-85

V Cont at Enrb 9,8"
Opened Oct 13-1888
Closed " 17-1888

Hand-drawn technical sketch of a mechanical part, possibly a bracket or arm, with various dimensions and labels. The sketch is on aged, yellowed paper. It shows a vertical central shaft with a horizontal crossbar. Dimensions include 8, 10, 15, 15.8, 10.5, 13, 11.7, 22.3, 7, 16.5, 20.3, 19.4, 22.4, and 2.7. Labels include 'RE' at the top and bottom right, 'W.B.' near the center, and '6' on the left. The sketch is partially enclosed by a rectangular frame with hatching on the right side.

86.4 W of 4 MH
" Knight

Brighton St.

4/13-15 James C Cottrell
~~3-5~~ Creighton St.

Thomas B Ross D.L.

Permit 5766

cut at curb 9.8

Opened Oct 15 - 1888

Closed " 17 - 1888

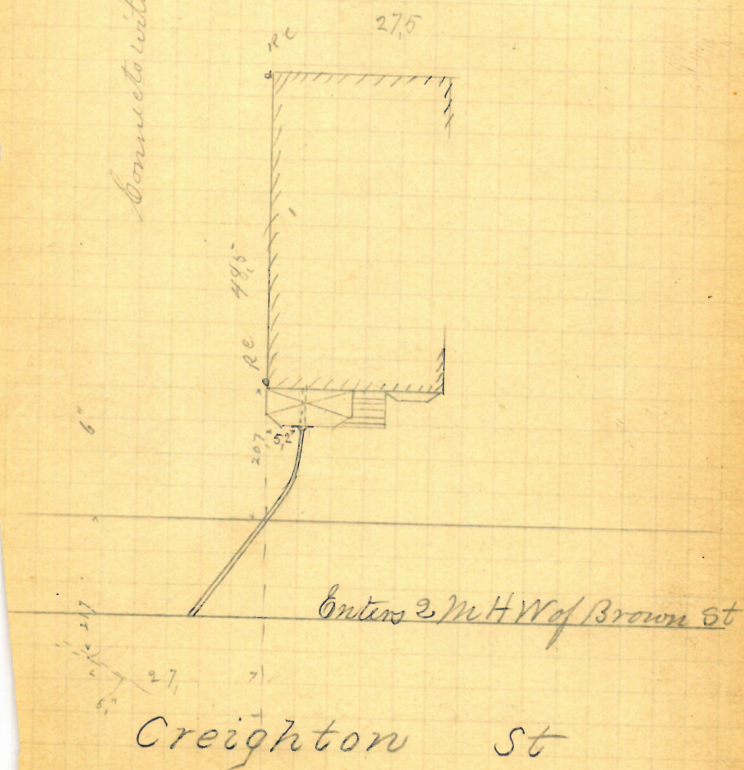
3/ Repaved - Mar. 24 1941

24 Closed - Mar. 25 1941

P. Mangione - cl. of. sidewalk.

Plotted

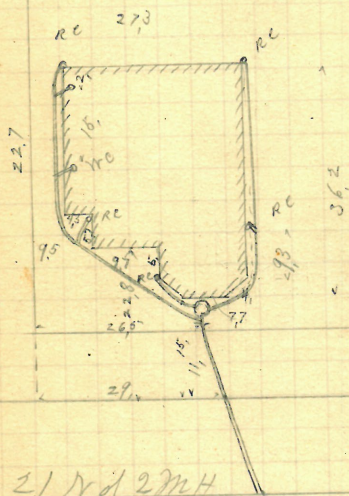
Connects to existing drain permit
 laid



Corp. Brown University
 Brook St Npt N of N & Co
 Daniel J. Duggan D.L.
 Permit 15-1678
 Cut at curb 9.4"
 Opened Oct 15-1888
 Closed Dec 1-1888

11/ Reopened Nov. 10, 1941
 110 Closed Nov. 10, 1941
 F.W. Tapp - clear-rook

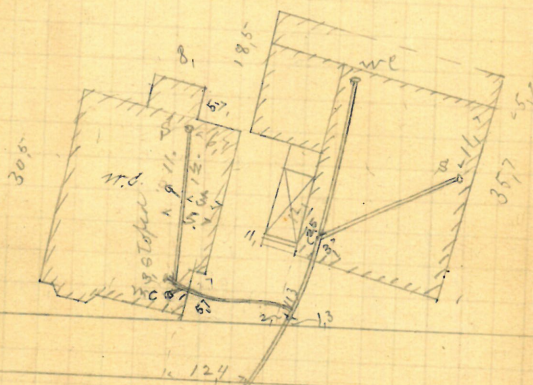
Plotted.



21 N of 2 MH
 at Manning St
 Brook St.

Thomas Quagley Wife
 2-70 ~~27-29~~ Kenyon St
 Wm H. Fenner & Co DZ
 Permit 5-168
 V
 Opened Oct 15-1888
 Closed Oct 17-1888

Reopened July 27-1921
 Closed " 27-1921
 M. Kerand. L.
 Reopened Aug 9, 1943
 Closed Aug 9, 1943
 P. Mangrove - Clear



62.7 W of 2 M.H.
 " Pallas St

Kenyon St.

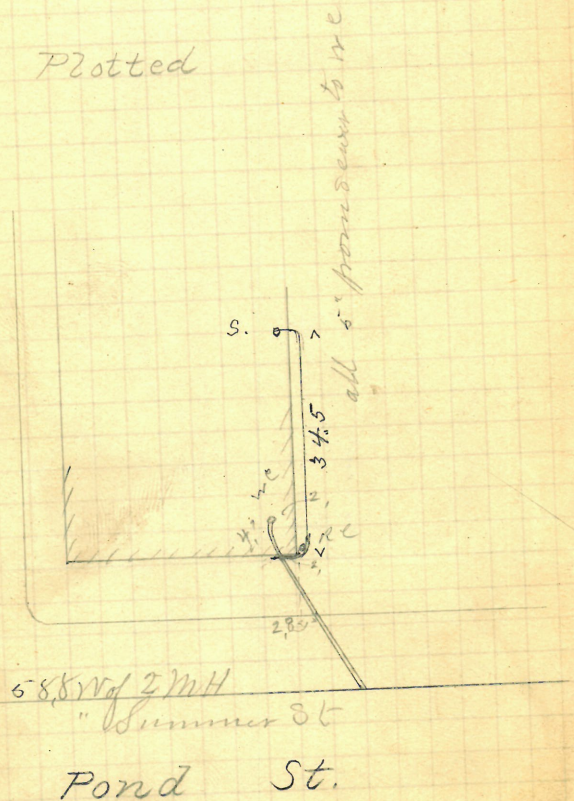
116 ^v

REMOVED

Walter B. Durfee Others
 #121 Pond ^{NE} Cor Spring
 Jason A. Blackmar DZ
 Permit 6769
 Cut at curb 10.4
 Opened Oct 15-1888
 Closed " 17-1888
 Reopened & closed Dec. 9-1905
 Wm. Chadrey & Co. Add Sink

Plotted

Spring St.

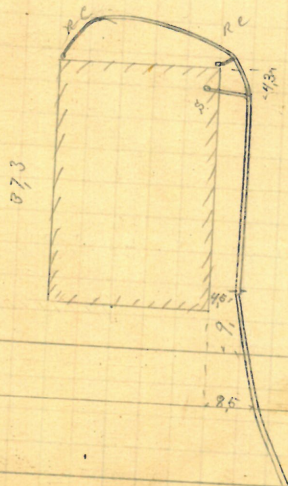


Ann E Wright
~~53~~ Lawrence St
 Jason A Blackman DL
 Permit 5170

Opened Oct 19-1883
 Closed " 25-1888
 Cut at curb 10.4'

6" to sinks 3' to R.C.

Plotted



776 Yrd 7 Mth
 " Boston

Lawrence St.
 now
 Dartmouth Ave.

Brown & Sharp Mfg. Co.
 Holden St. Ruffer building W. S.
 7 Frank Road E. 5" Pipe
 R. 5171
 V Cut at curb 10'

Opened Oct. 18 - 1888
 Closed " 19 - 1888

7 Reopened - July 20, 1937
 20 Closed - July 20, 1937
 W^m Waddington - clear

Plotted

all 6"

Cellar

44.8 N of 21/4 W

" " Promenade

Holden St.

120

P 168
34

Joseph W Paddelford
85 6 Arthur Ave
Jason A Blackmar DZ
Permit 5-173
tent at curb 10,

Opened Oct 19-1888
Closed 22-1888
Reopened Aug. 28-1903
Closed 11-29-1903
A. Aiello D.S. = Cleanout

Reopened April 14-1904

Closed 11-15-1904

J. Capaldi D.S.

Reopened May 3/28

Closed 28

G. Rinaldi D.S.

Reopened June 8/1945

Closed June 12/1945

Clear parting up of walls

J. Mangione

OPENED 6/29/77

CLOSED 6/29/77

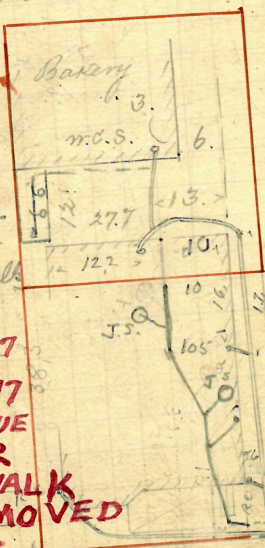
D.L.F. DONAHUE

DIG & CLEAR

OPEN SIDEWALK

TRAP REMOVED

P.J.K. INSP.



Plotted

Reopened 5-3-85
Reopened July 5-1945
Closed July 5-1945
Add 2 floor drain M. Rinaldi
12/2

REMOVED TRAP

72.2 Sep 1/11/14

Atwell's Ave

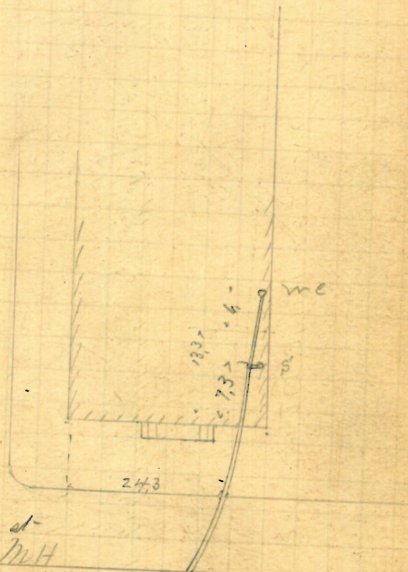
Arthur Ave.

Kingston Savings Bank
 E. Cor. Mathewson & Washington
 J. Frank Read D.L.
 Permit 5-174

Opened Oct 25-1888 Cut of curb 7.8"
 Closed " 26-1888
 Reopened July 1943
 Closed " 1943
 Dr. D. J. Malone
 Cellar bottom

Plotted

Washington St.
 all 6"



38.6 ft 1/4 H

5 ft Washington St.

Mathewson St.

American Windless Co.
East River St. N. York Harb.
James P. Millard D. L. Man
Permit 5176-5176
Opened Oct 22-1888 Went at least 7.
Closed Nov 23 1888

Reopened Aug. 22-1904

Closed " 24-1904

W. E. Danforth - S. S.

Reopened Mar 8, 1934

Closed Mar 10, 1934

C. Simonds - as Reg 24" I

Plotted

Reopened Sept. 10-1913
Closed " 11-1913
C. G. Elford S. S.

Waterman Street

Reopened 23-1917
Closed " 25-1917
J. E. Brown S. S.

Discovered -

Plotted
Reopened May 1923
Closed " 1923
J. Capaldi S. S. Greenock
Reopened 1923
Closed " 14-1923
J. E. Kitzpatrick S. S.

East River Street

Extends S. 37.6' West of W. man
" " East River

Ex. 5098

Danah Rubber Co.

June 6 / 33

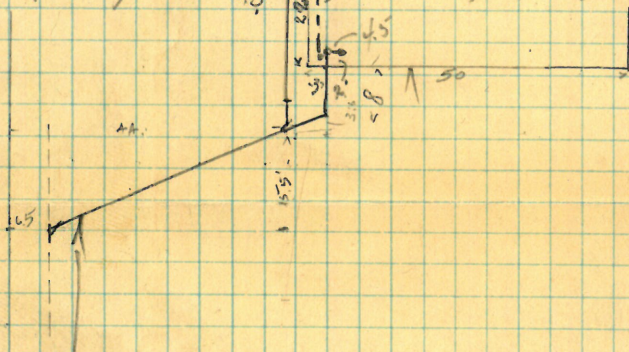
opened June 6 / 33
Closed.

57 Point St.

68

on wall

Edwin Scott.



162

135

Point St

Henrietta M. H. Bronnwell
Peck Co Friendship
Frank Read D.L.
Permit 5-179

Ent at curb 6.8

Opened Nov 1 - 1888

Closed " 1 - 1888

Reopened Mch 20 - 1912

Closed " 25 - 1912

J. Deary D. L. ~

Reopened - June 1, 1944

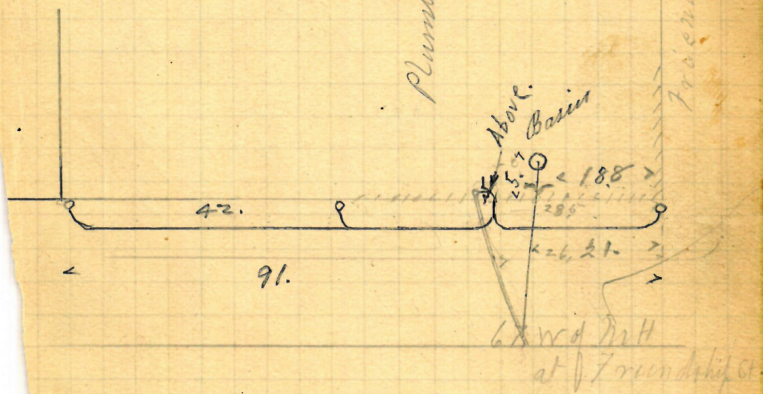
Closed - June 5, 1944

C. Lees Add R.C.'s.

See EX. 3020 of 5/11/44

" 427
128

Plumbing above cellar bottom



Peck St.

Entire Sewer 67 ft N of MH a S line
Friendship St

C. B. Fox
File Train

Reopened June 5. 92

Closed June 5. 93.

Reopened Aug. 25/93

Closed Aug. 25/93.

Reopened Sept. 22, 96-

Closed 11 2511963

Plotted

Reopened Mch 5, 1898

Closed 11 74 98

J. W. Furlong D. D.

see $\frac{32}{213}$

for Miller Hall
& Andrews Hall

95,5 W of 2 M H
Thayer St.

Cushing

St.

Removed

127

Anna H. Man
George J. Knutton Lessee
Pearl Co. Road
Jason A. Blackmar D.L.
Permit 6784

Opened Nov 2-1888
Closed " 5-1888

Reopened Aug. 26, 1897

Closed " 28, 1897

J. A. Blackmar D.L.

Reopened Nov. 28-1924

Closed Dec. 1-1924

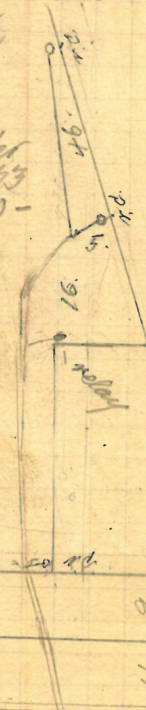
J. Blackmar D.L.

In 1924 to 2317 1924-27

For 5. Work done under

the permit 6784 1923

See Box 1623 41/2 p. 10-60-



Plotted

Not to Scale

Bound 15

Pearl St.

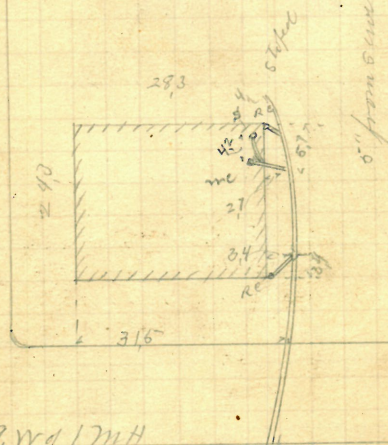
at River into main hole at
Central St.

Matthew O Donnell
 Trenton^{SW} Car Ives St.
 Jason A Blackman D.L.
 Permit 5-181
 V Cut at Comb 9.1"
 Opened Nov 5-1888
 Closed " 6-1888

St.

Ives

Plotted



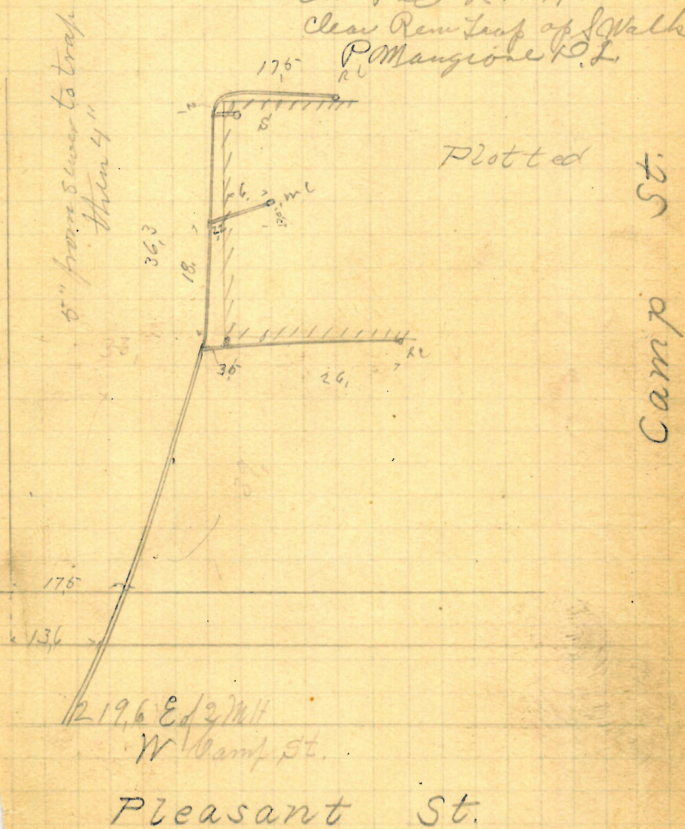
29. W. of 17th
 Gros St.

Trenton

St.

Penelope F Hazard
 Pleasant Cor Camp
 James C. Conroy D.L.
 Property 5-18-82
 Cut at curb 8.4"
 Opened Nov-1888
 Closed 4-13-1888

Rec Dec 2 1949 12/1/49
 Cle Dec 2 1949
 Clear Rem Top of Walk
 P Mangione D.L.



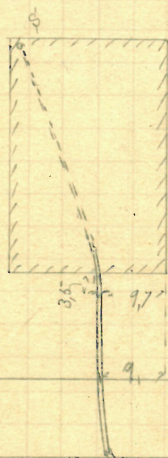
130

Removed

Union Savings Bank
 #73 ~~53~~ Bates St
 Frank Read D.L.
 Permit 5-183
 V Cent at Cent 9.
 Opened Oct 30-1888
 Closed " 30-1888

5" from sewer

Plotted



197 E of 6th St
 Liffitt

Bates

St.

IP

163

Removed

Wm. W. Chapin

320 27th Washington St

Patrick Tierney D.L.

Permit 5-186

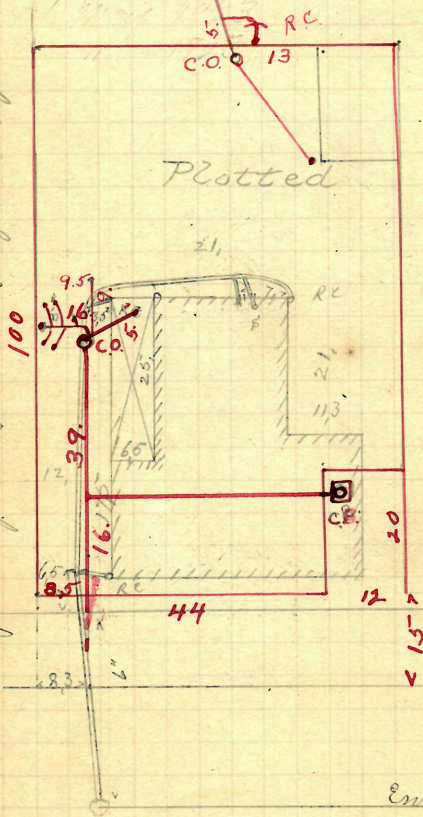
24.

cut at curb 9.5

Opened Oct 31-1888

closed Nov 3-1888

Rev apr 1, 1947 31 Per mar 28 1947 31
 Clo apr 1, 1947 156/47 Cl- June 8 1947 124/47
 add of Adm. & P. L. in Bldg. Apr 1947 147



Enters 4 M.H.
 Ed of Dean

Washington St.

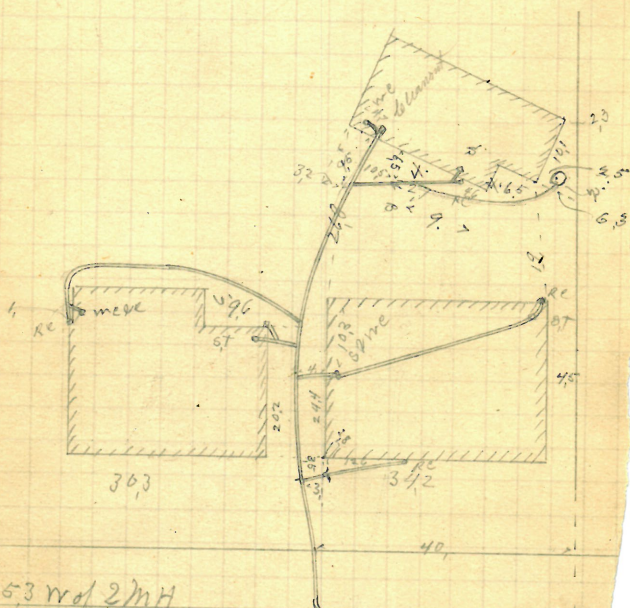
Removed

31-37

Genl. B. Knight
 Hoyle St.
 Thomas Phillips to DZ.
 Permit 5-188

Opened Nov 5-1888
 Closed " 13-1888
 Reopened July 13-1903
 Closed " 15-1903
 J. Deary D. Co.

Plotted.



1253 rd 2nd St.

" Fennor St.

Hoyle St.

P-158
33

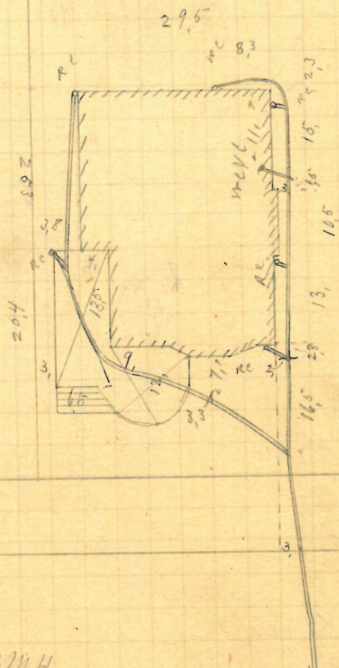
135

Heirs of Phibe W Gardiner
 43 ~~43~~ Wesleyan Avenue
 J F Read D.L.
 Permit 6189
 V Cut at least 108
 Opened Nov 8-1888
 Closed " 13-1888

Trays added by P.
 Jimmy July 9/91

Plotted

6" from sewer



49.9 W of 3111 H
 " Taylor St.

Wesleyan Ave.

198 Ira Olney
~~46-48 Orms St.~~
 John Keogh D.D.
 Permit 5/91

V Out at curb co.
 Opened Nov 5 - 1888
 Closed " 7 - 1888

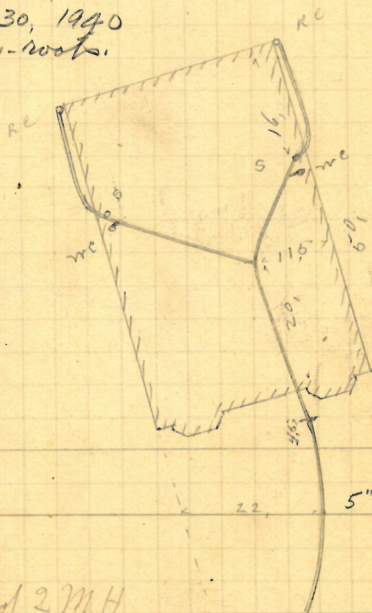
Reopened + closed June 8/91.
 to add + rc + 1 s.
 by J.F. Reed D.D.

Plotted

Reopened - Oct. 30, 1940

Closed - Oct. 30, 1940

V. Herd - clear - roots.



4/9 Reopened - Apr. 8, 1938
 Closed - Apr. 12, 1938
 Max. X clear - clay
 open sides - Relay

5" from sewer

53, 1 W of 2 MH

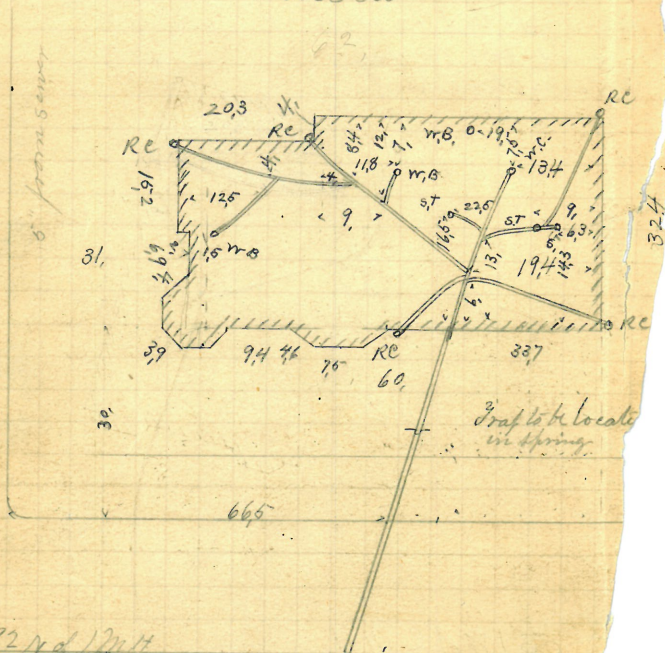
Jefferson St.

Orms St.

Frederick A Devoll
 182-184 Angell Cor Taber Ave
 Jason A Blackmar D.L.
 Permit 5192
 ✓ Out at curb 107'
 Opened Nov 6 - 1888
 Closed Jan 1 1889

Plotted

Angell St.



192 N of 12th

Angell St.

Taber Ave

Thomas Mc Dermott
183 William St.
D. J. McCarthy D. L.
Permit 5196

Opened Nov 12 - 1888
Closed 16 - 1888
Reopened Aug. 31 - 1893
Closed Sept. 1 - 1893

D. E. Barry D. L.

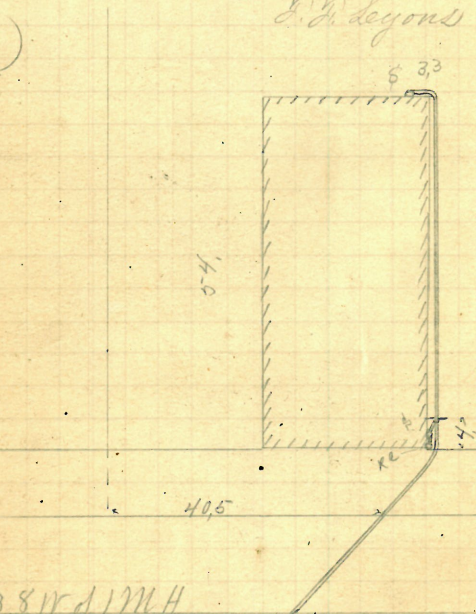
Reopened mch 23, 94

Closed mch 22, 94

F. H. Lyons D. L.

Plotted

Clear cut in sidewalk Sept. 1, 93
Clear cut - mch. 22, 94



123.81 of 1 MH
Ins St.

Williams St.

Wm H. Briggs
 477 Pine Cor Linden
 Jason A. Blackmar D.L.
 Permit 5/98

Opened Nov 12 - 1888
 Closed " 15 - 1888

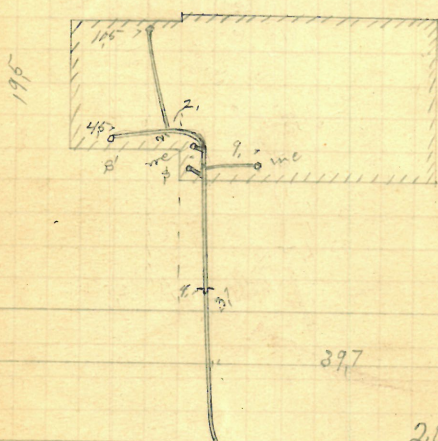
Proposed Dec. 30 - 1924

Closed " 31 - 1924

M. H. Insoll & Co. - Cleanout

Plotted

5' from street



Pine St.

20, w of 17th H.
 " Pine St.

Linden

St.

GONE

147

Curt E. Hin Simmons

Point St.

Patrick Tierney D.L.

Permit 5201

Cut at curb 6,7

Opened Nov 30-1888

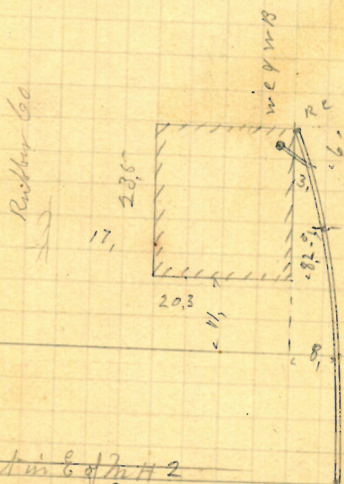
Closed May 14-1889

Closed " 14-1889

Reopened D.L.

Reopened Connected Propped

to demold onsp



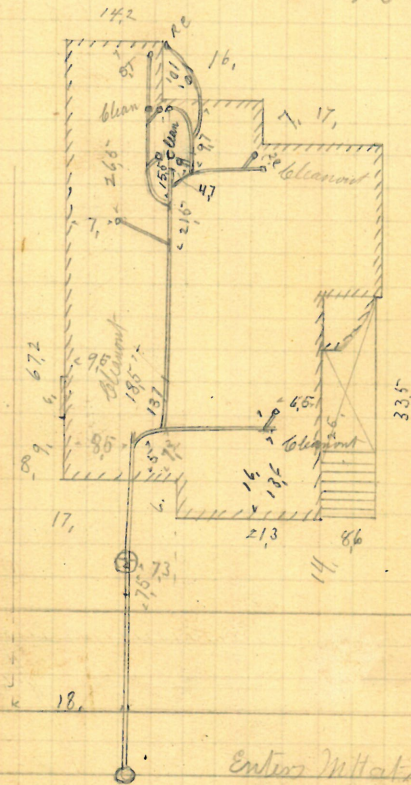
65.7 Cut in E. of 2nd H 2

" Eddy St.

Point St.

Intersect 74' East of 2nd Main hole cut of
 North side of Eddy Street

Almira B Potter
 Wife of James A. 357 Broad St.
 Thomas Phillips & Co D L
 Permit 5-200-
 V Cont at City 10.5
 Opened Nov 22-1888
 Closed Dec 6-1888



Plotted.

Enter in that corner of st

Broad St.

73-75 Harriet A Swarts
 Weybosset St.
 Patrick's Piermy 9 L
 Permit 5206
 but at curb 5,5
 Opened Nov 20 - 1888
 Closed " 20 1888

Plotted

Orange St.

from above cellar bottom

St. 95

88

7

984 Ed M H
 at Orange St.

Weybosset

St.

S. B. Champlin & Son
 Ship Junct. Chestnut St.
 I Frank Read D.L.
 Permit 5-207
 V Cut at length 7.8"

Opened Nov 22 - 1888

Closed D 20 - 1888

Reopened & closed Aug 4 - 1901. Sunday

E. H. Blackmar & S. B. - Changed from Read

Reopened July 22 - 1901

Closed " 25 - 1901

J. W. Colgrove D. L.

Reopened July 1915

Closed " 1915

Geo. W. Lewis & Co. - Cleanout

Plotted



68.4 w of S.W. H.
 Bassett St.

Ship St.

154

GONE

Ex. 5208

Sept. 21-1916

Elizabeth A. Gammell

J. Frank Read D.L.

Permit 5-208

cut at curb 9.5

Opened Nov 28-1888

Closed Dec 14-1888

Plotted

Removed

Reopened Sept. 21-1916
 Closed " 23-1916
 J. P. Read D.L.

Reo 3/25/53
 Clo 3/26/53
 W. J. Cuddigan
 4" IRON to
 old LINE

Reopened 8
 Closed 8/-/53
 D.L. H. J. Keag.
 All above.

88.6-Ed 2 M H
 " Brook St.

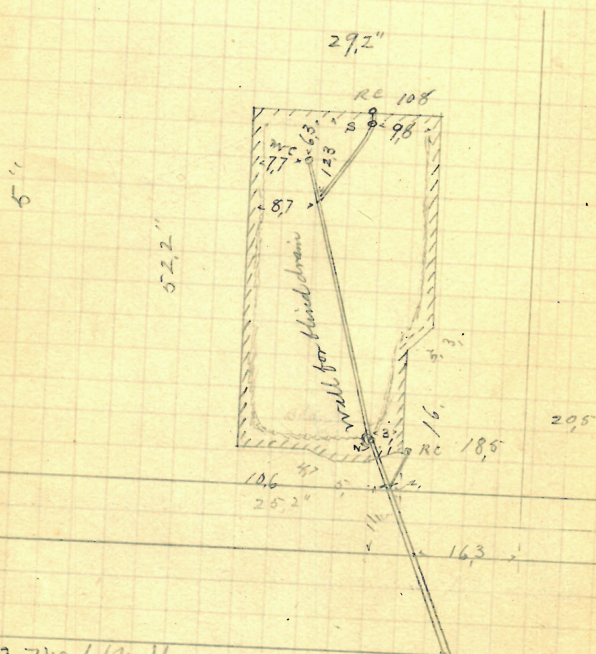
Manning

St.

156 ✓

#116 Phoebe J. Cunniff
 Power St. R.S. Wy. Co. Conn.
 Permit 5210 Frank Read D.L.
 Opened road 28-1888
 Closed " 29-1888

Plotted

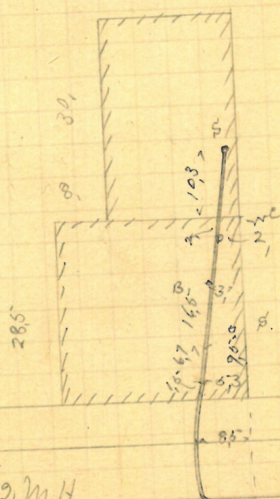


52.7 rd / MH
 " Brook St.

Power St.

James C. Cranston
 3 Chapel St.
 Nathan B. Horton D.L.
 Permit 5-211
 V Cut at curb 7.2
 Opened Nov 23-1888
 Closed " 30-1888

Plotted



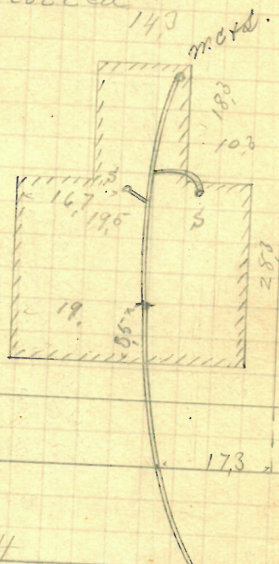
31. W of 2nd H
 Nathan St.

Chapel St.

Estate Wm Howe
72 Pitman St.
J Frank Read D.L.
Permit 52/2

Opened Nov 30 - 1888
Closed Dec 5 - 1888
Reopened June 11 97 to Blawie - J. Deary D.L.
Reopened & closed Mch. 24 98, J. Deary D.L.

Plotted

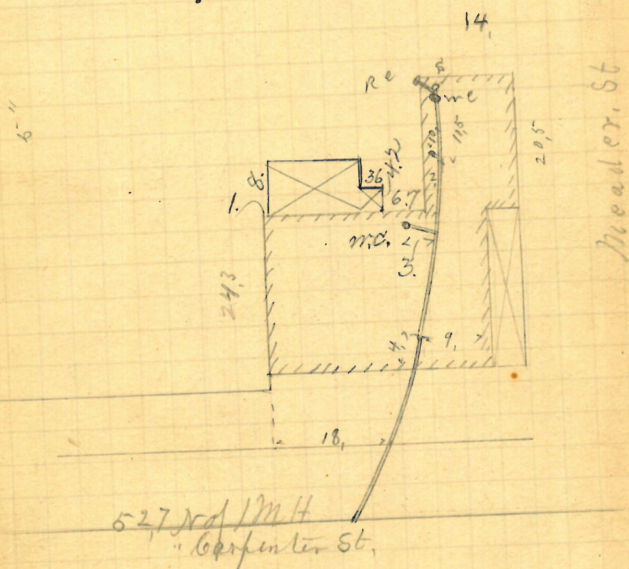


13, W of 4th St.
Butler Ave

Pitman St.

7/49 Jennima W. Sprague
 Marshall St. W. W. Meader
 Jason A. Blackmar D.L.
 Permit 5213
 V cut-at-curb 98"
 Opened Nov 28-1888
 Closed Dec 5-1888
 Reopened Sept 26-1902
 Closed " 27-1902
 C. Birtwell S. L.

Plotted



Marshall St.

160

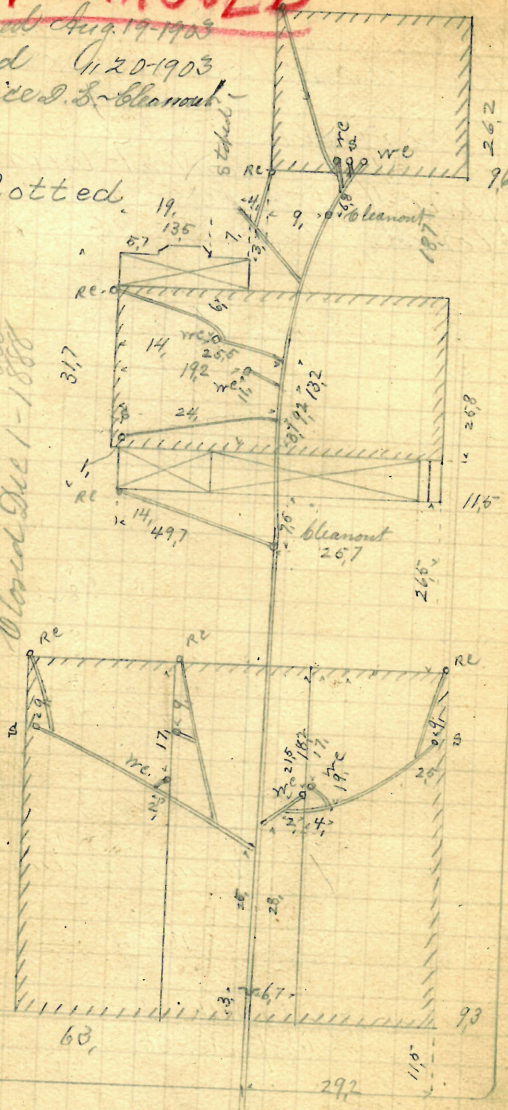
REMOVED

168-69

Roswell O Whitney - Reopened & closed Jan 16-26-1889
 Cranston Cor B. St.
 Jason A B lacking D.L.
 Permit 5214 Cut at East 11.
 Opened Nov 30-1888
 Closed Dec 1-1888

Reopened Aug 19-1903
 Closed 11-20-1903
 W.C. Rice & S. S. Blount

Plotted.



Sarah M. Whitford
34-36 West Exchange St.
Jason A. Blackmar D. L.
Permit 6-215

Opened Dec 19-1888
" 22-1888

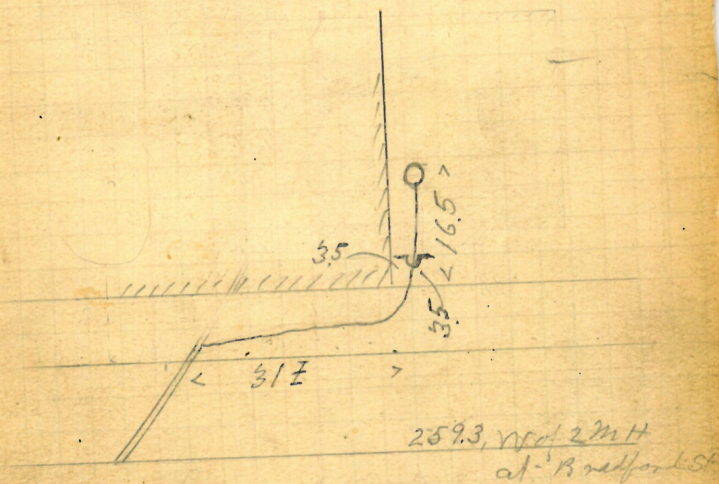
Closed
Reopened Nov. 12-11 95 } Eleanora
" 14-11 95 } C. Conroy D. L.

Reopened July 29-1914

Closed Aug. 3-1914

E. C. Perry D. L.

Plotted



West Exchange St.

GONE

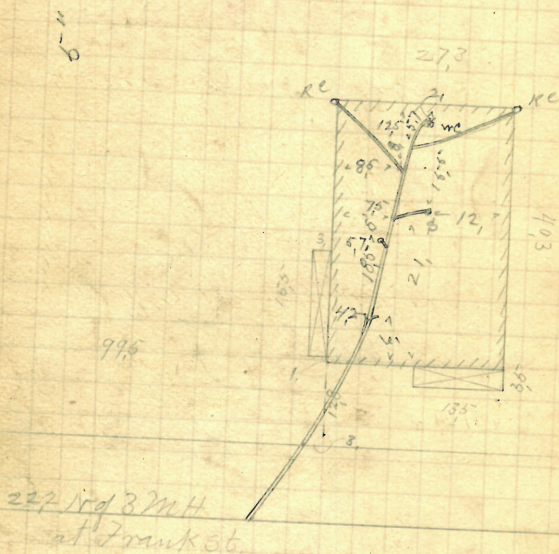
Permit 5216

Out at curb 107

Opened Dec 1 - 1888

Clara " 49-1888

Platted



Beacon St

William Flanagan
 #12-14 Labor Avenue
 Jason A Blackmar D.L.
 Permit 6-2-18
 V Cut at curb 11.
 Opened Dec 3-1888
 Closed " 8-1888

