

#153 ✓ 1.

Nathan Atwood

25 Walling St.

Jason A Blackmar

DL-

Permit 746

Cut at curb 9.65

Opened Nov. 12th 1874

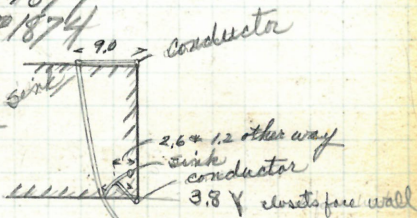
Closed " 16th 1874

Reopened July 7-1923

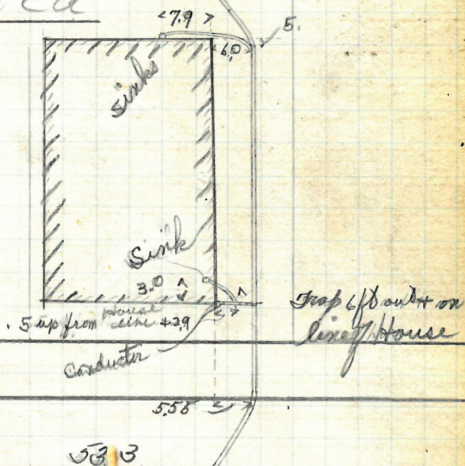
Closed " 10-1923

W. Sciacioli DL-

cleanout



Plotted



5th ME

533

Walling St.

160 from Pettis St.

came up one 3/4 pipe at curb.

21

Michael Kennedy
23 West River St.
John O'Donnell
J.L.

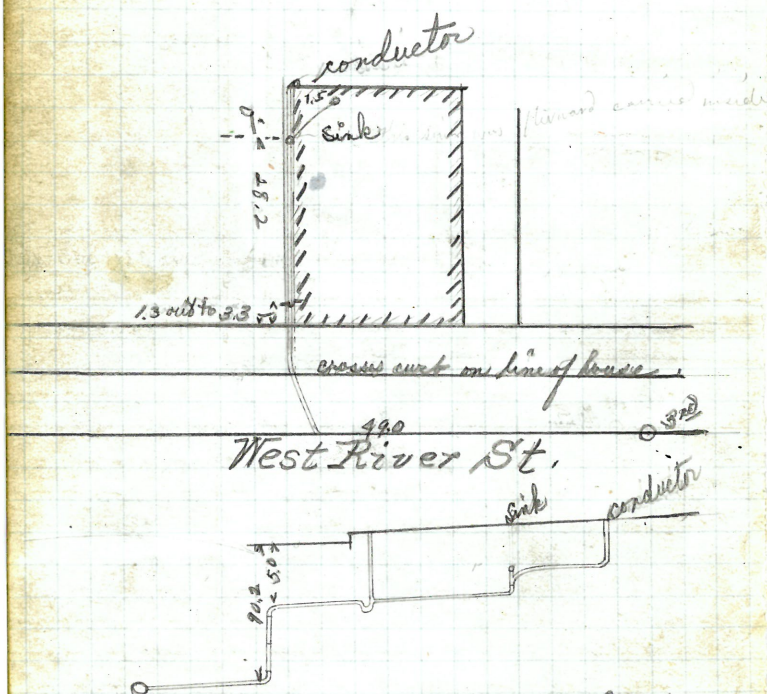
Permit 726

Cut at curb 10.2

Opened Nov 12th 1874
Closed " 14th 1874

Reopened Nov. 12, 1921
Closed " 16
W. Rossi & Co.

Plotted



GONE

3

Phillip Case
Jackson St.
Nathan B. Horton

SH -

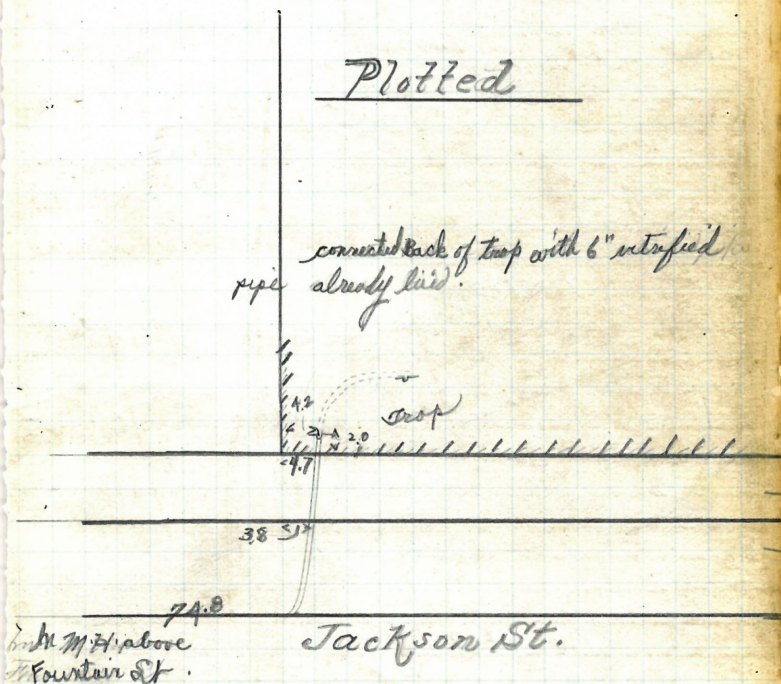
Permit 755
Cut at curb 7.9

Opened Nov 13-1874

Closed " 14-1874 (74.8 from M.H. above Fountain)

Plotted

converted back of trap with 6" entry pipe
already laid.



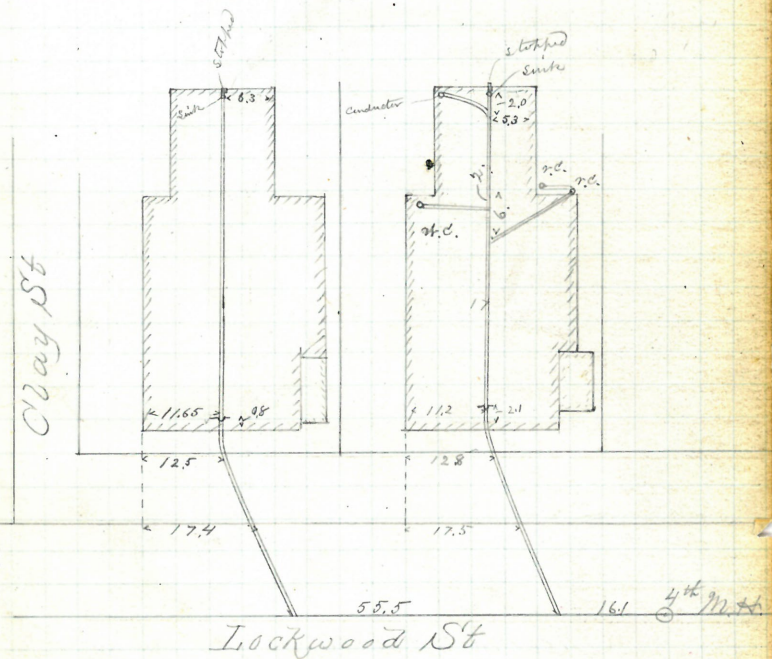
Came up me pipe at curb

Henry A Howland
33/37 ~~7-19~~ Lockwood St
Frank Holden

D.L.
Permit: 573-674
Cut at curb 9.6
Upper one 9.1

Opened Nov 13 1874 Reopened & closed Apr. 29, 98
Closed " 18. 1874 J. F. Blackmar D. L.

Plotted



7
Mrs Ellen M. Greene
441 Angell St

James D. T. Lindworth
LL

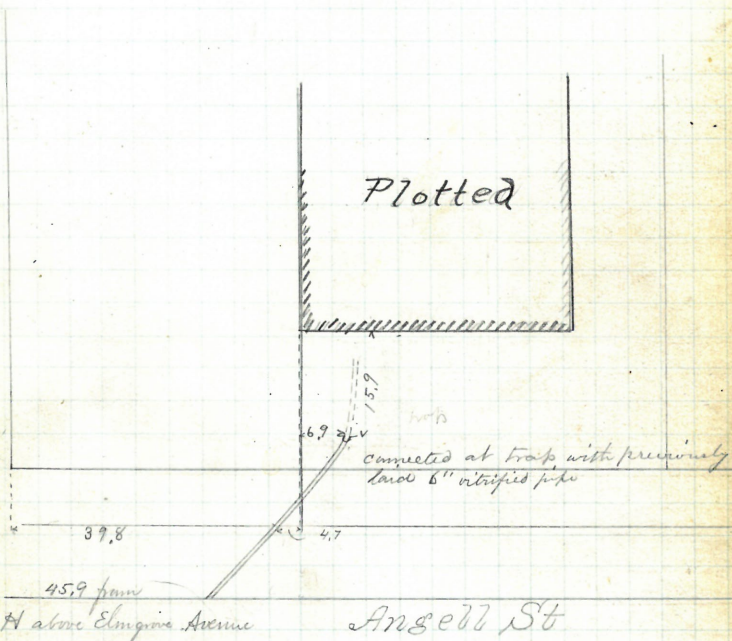
Permit 758

Cut at curb 9.1

Opened Nov 13 1874

Closed " 16 1874

4823 - pm 11 H. about Elmgrove Ave



270 from James

Charles Galligan
31 Walling St
John Edmund
LL

Permit 764
Cut at curb 9.5

Opened Nov 13 1874

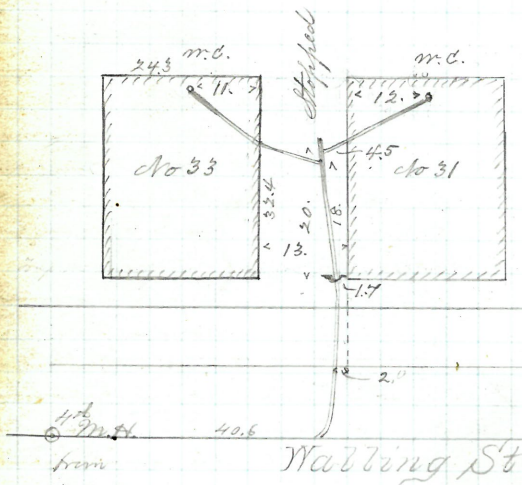
Closed " 16 1874

Reopened Nov 10 99

Closed " 11 99

Wm Condry D. L.

Plotted



Avery Pettis

17 & 21 West River St
from Connell

Permit 747-748

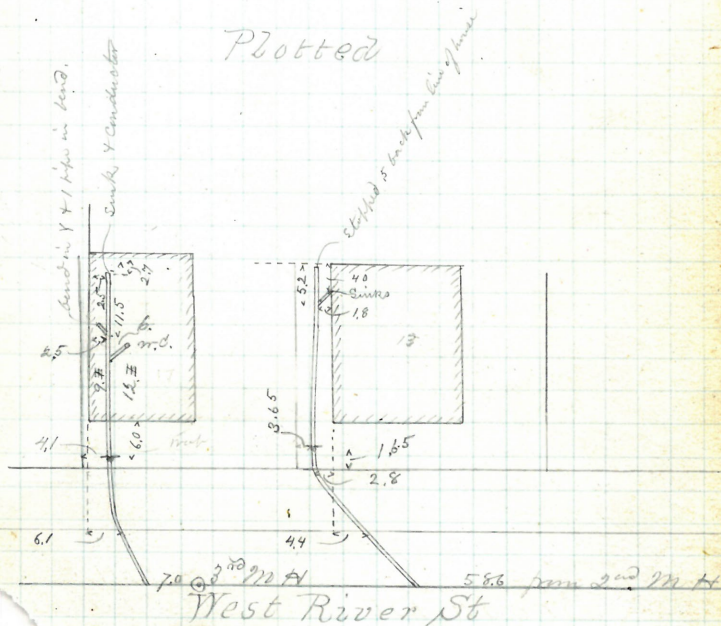
Cut at curb 10.1

Opened Nov 13 1874 Lower arc 10.3

Closed 11 16th 1874

Reopened & closed Sept-4-97-D. Holmes & S. L.

Plotted



one pipe beyond Graph No. 3 came up 2 pipes
at 17

Calculation for Slope Water in Cellar

*Fredric Fuller
197 Brook St
Thomas B Ross*

*Permit 720
cut at curb 9.2*

*Opened Nov 14 1877 R & F Closed June 27-1889
Closed " 16 1877 For G. Works done under
Reopened Sept 27-1886. Thick Permit Dec 8-1919
See BR No. 2201 G. No. 86-
6/ Reopened June 8, 1943
Closed June 14, 1943
F.W. Taft - Disc. # 281 Brook St
6/ Reopened 6/13/44
13 Closed 6/13/44
F.W. Taft - Clear*

Potted

See 3171-6

Plug

*connected at building line with pre-
sumed 6" pipe*

*60.0 from M.A. above
Chas Fuller St*

Brook St

60.0 from MTH above
Chas Field St

came up two pipe at curb

130 pgs. Rev.

✓ 11

SL

Cut at curb 9.3

Closed " 23rd 1874

Closed May 13. 93.

1/2 Resolved - Nov 3, 1933

Closed - Nov. 5, 1935

W. Callaway - New Blk



59.5 —
44.1 rem

4th M. H. below
rest of St

Friendship St

Removed

13

Isaac A. Sherman
5 Lockwood St
James S. S. Buckworth
JL

Permit 689
Cut at curb 9.5

Opened Nov 16th 1874

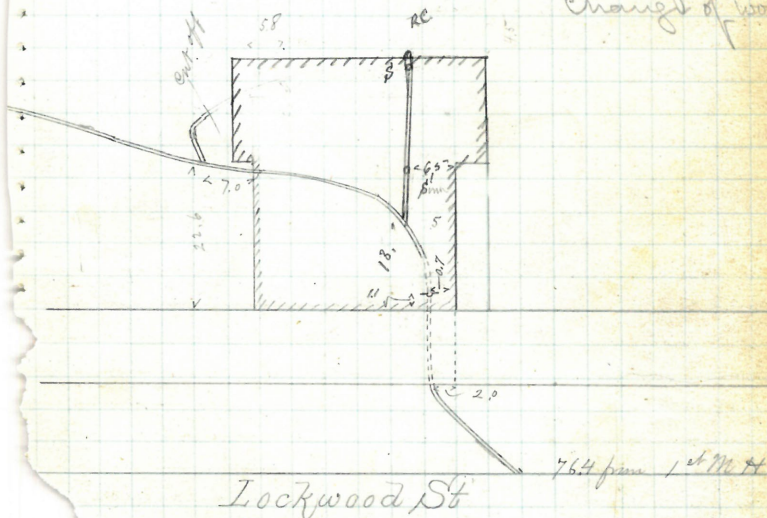
Closed " 17th 1874

Reopened July 17-1875 Extended Nov. 6th-8th 1876

Closed " 18th 1875 W.B.S. did

Plotted

See pad book
#24 for change
of work



Came up at curb. to 3.3 and connected with 6" vitrified pipe
then set a trap in cellar and connected beyond trap with
brick drain

Ans M. Chapman
#228 So. Argill St
Thomas B Ross

228

~~90. McGill St~~
Thomas B Ross

Thomas B. Ross

22

Permit 7.70

Cut at curb 9.9

Alpena Nov 16 1874

Closed ... 1874

Received Sept. 19-1919-

Closed 11 20-1919-

F. O. Ramsey D.D. -

Received Sept. 30-1919

Closed Oct. 2-1919

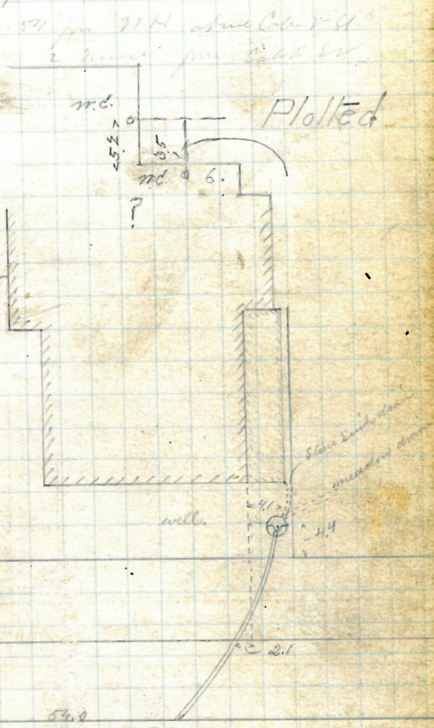
L. P. Reaver D. L.

1, Reopened - (Nov. 29, 1994)

27 Closed - Dec. 2, 1943

M. Rossi - Clear - now

Open side - Ref. 4. I



3rd from Brook St.

54. 0

Angell St

came one pipe at our

Avery Potts

35 & 37 West River St

John O'Donnell
LD

Plumb 749-750

cut at curb 10.1

upper one 10.1

Opened Nov 16 1874

Closed 2/1 1874

Repaired & Closed Sept 7, 1929 - P. Gidea LD

12 Reopened - Oct 27, 1938

13 Closed - Oct 28, 1938

S. Raczelowski - add W.C.

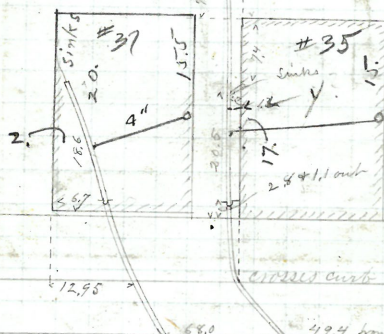
#37

10 Reopened - Nov. 4, 1938

13 Closed - Nov. 4, 1938

S. Raczelowski - add

4" stack at #35



West River St

this one came up one pipe at curb

This one came up two pipes at curb

John Burton

41 Walling St.

John A. L. D. M. L.

Permit 769

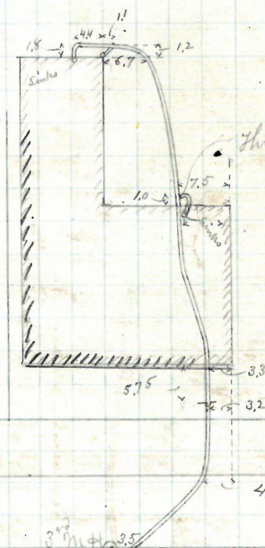
Cut at curb 9.6

Opened Dec 18 1874

Closed Nov 20 1874

3.5 ft from curb

Plotted



Walling St

came up one pipe at curb

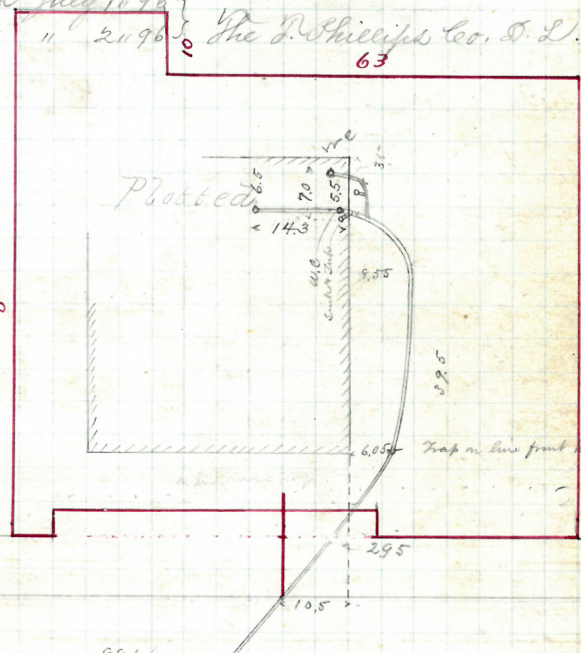
David Gowder
463 777 Argell St.
Wm Andrews & Son

Permyt 7.75
Cat at crib 9.6

Opened Nov 17 1874
Closed " 25 1874

Received June 10 - 1885 - by J.W. Furlong D.D.
Book of Numbers 23

Reopened July 10 1963 }
Closed " 21 96 } The D. Phillips Co., D. L.



V. 200-11 May 22 1750 New May 22 1950
 C. 200-11 May 22 1950 3/10 New May 22 1950 1/10
 include also M. Fred. 17 New City C. 200-11

M. H. below Elm & Ave Angell St

Rhodes B Chapman and W. J. P.
Caret St
Thomas B Ross

Permit 777^a
Caret St 98

Opened Nov. 17 1874
Closed 18th 1874
Reopened Oct-24 1887

Reopened Dec. 30-1899

Closed Jan. 20-1900

E. C. Brennan D. D.

Reopened Aug. 5-1920-

Closed 11 7-1920-

J. Appleton D. D.

Reopened Sept 29/28

Closed Sept 29/28

J. A. Mahoney & Co.

See Book 2627

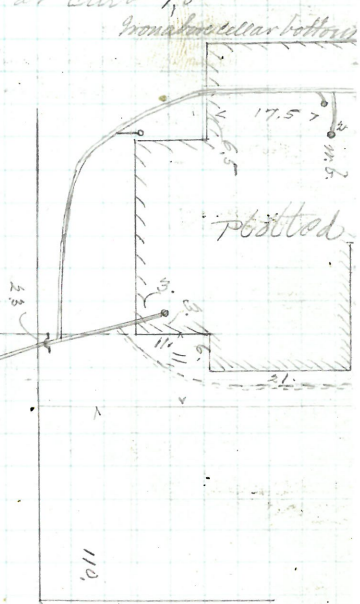
Page-37

Caret St
This street is 100 feet wide in the yard

972 N. 1st St
= Angel St

This does not amount to much anyway

from Brook St
Angel St



Sianna Fitzgerald
284 ~~177~~ Brook St

284

— Brook St

Thomas B Ross

Pennit 776

Cut at curb 9.7

Spent Nov 19th 1874

closed. 20th 1874

Flour Grain

Received Sept 13 1922

Closed " 15-1922
P. Gallagher, Jr.

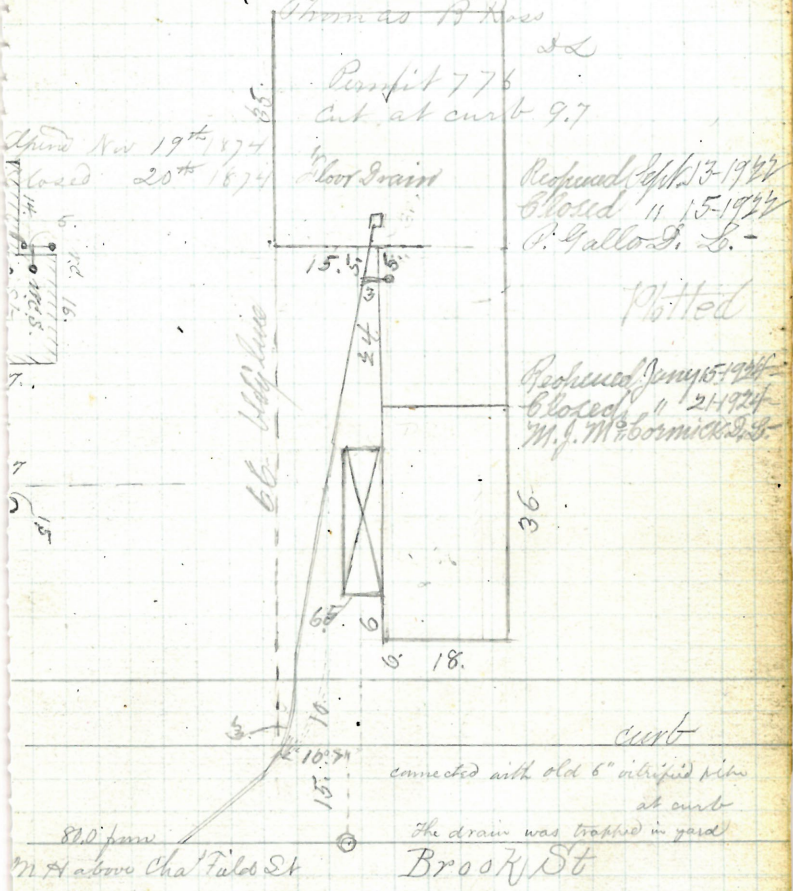
P. Gallo G. L. -

Plotted

Received Jan 15 1924

closed " 121924
in 1 M^o Hornick, J. B.

M. J. McCormick & Co.



81.0 fms
N 4 above Cha' Filds St

connected with old 6" vitrified pipe
at curb

The drain was trapped in yard
D 7. S/L

Reopened Feb. 1, 1952 2 1/2
Closed Feb. 2, 1952 1/52
T.A. Gammino clear

Feb. 2, 1952 $7\frac{1}{2}$

T.A. Gammino Clear

Avery Peltus

39 - 41 West River St.

John A. Donnell

LL

Permit 751-752

cut at curb 10.3

Opened Nov 17 1874

Lower one 10.3

Closed " 20 1874

Reopened May 5-1921

Reopened July 10-1918

Closed " 1921

Closed 1918

W. W. Kelly & S. Blawock

W. Leyou & S. Blawock

10 Reopened - Oct. 17, 1938

113 Closed - Oct. 17, 1938

S. Raczelowski

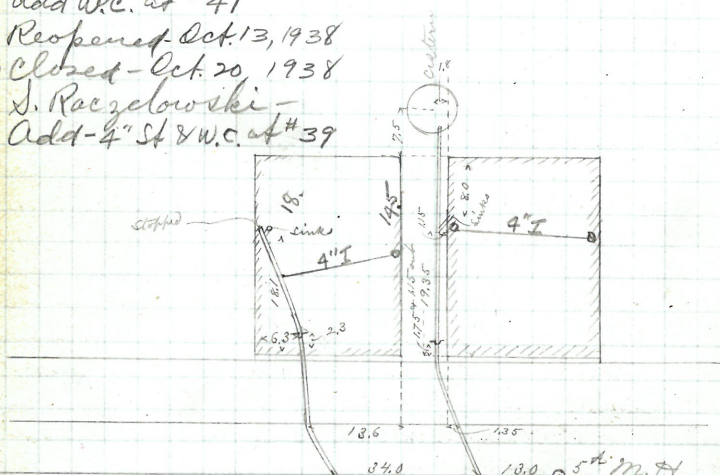
Add W.C. at #41

10 Reopened Oct. 13, 1938

113 Closed - Oct. 20, 1938

S. Raczelowski

Add 4" St & W.C. at #39



West River St

Both drains coming up one pipe at curb

130 + 160 ft

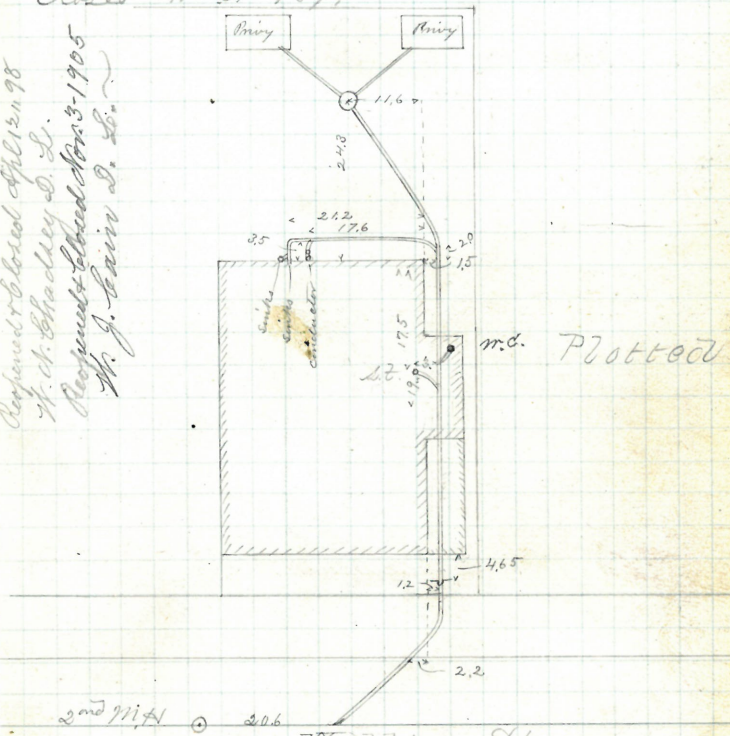
384 + 412 ft from Claf St

Edward J. Conroy
45 Walling St.
John A. Donnell
LL

Permit 774

Opened Nov 17 1874 Cut at curb 9.35
Closed " 21 1874

Reopened & closed April 12 1898
H. C. Bradley D. L.
Reopened & closed Nov 3-1905
H. J. Conroy D. L.



md. Plotted

Walling St
came up at me pipe at curb

105 mm hole

24ⁿ

W. Sutherland

39 Walling St.

John A. Donnell

JL

Permit 767

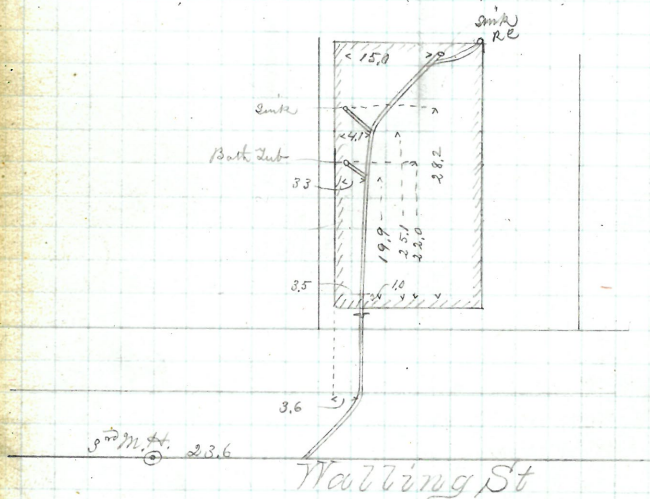
Cut at curb 9.6

Opened Nov 17th 1874Closed " 19th 1874Reopened Aug 6 1878 5th house for Haly

Closed " 6-1878 23.6 in 3 211 M.

To examine found it steep in sidewalk

Plotted



Alex F Campbell

27 Walling St.
Jas. A. Blackman

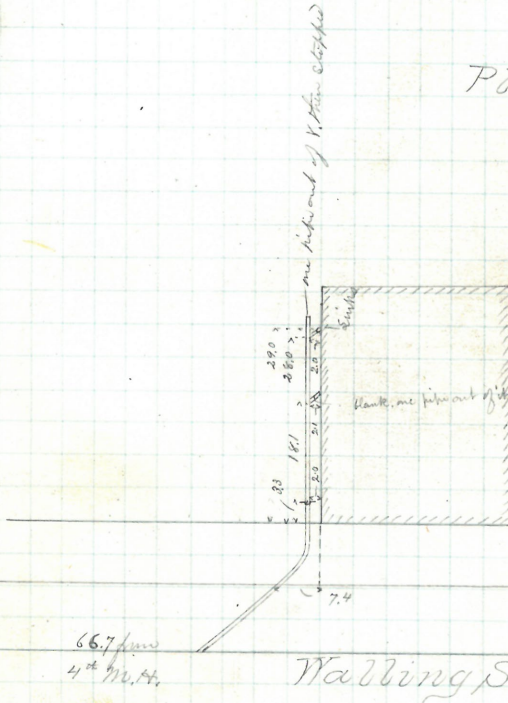
Permit 772 D.L.

Cut at curb 9.5

Opened Nov 17 1874

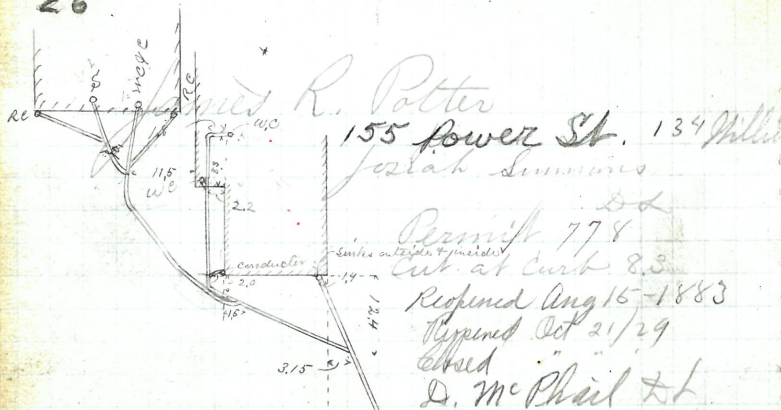
Closed " 19 1874

Plotted



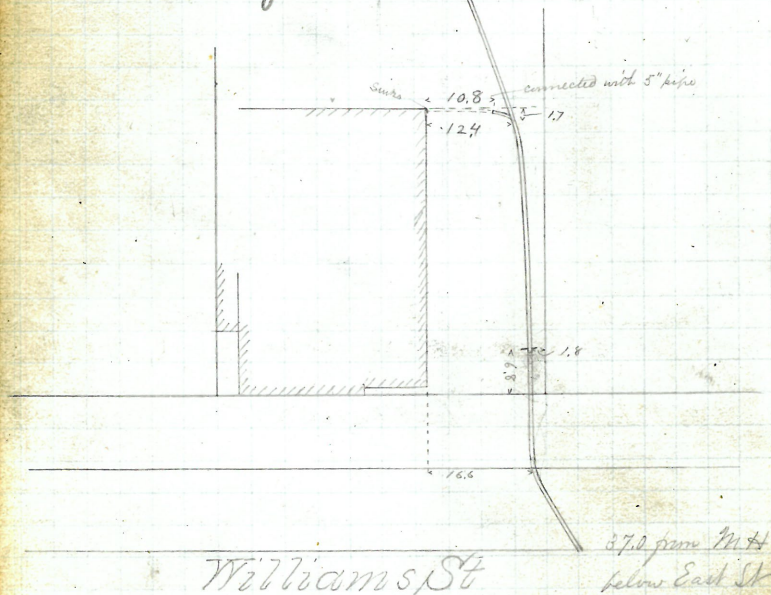
210 ft. Patten

1.60 20



Opened Nov 20th 1874
Closed " 30th 1874
Opened - May 15. 1933
Closed May 15. 1933
T. Clark relay inside

Plotted



Henry M. Carron

51-53 Atwells Ave.

Alfred Munnell

Ed

Permit 763

Cut at, cut 9.6

Reopened Sept 6-1904.
Closed " 6-1904.
Co. M. Remmey D. Co.Opened Nov 18th 1874Closed " 26th 1874

Reopened Jan 12-1901

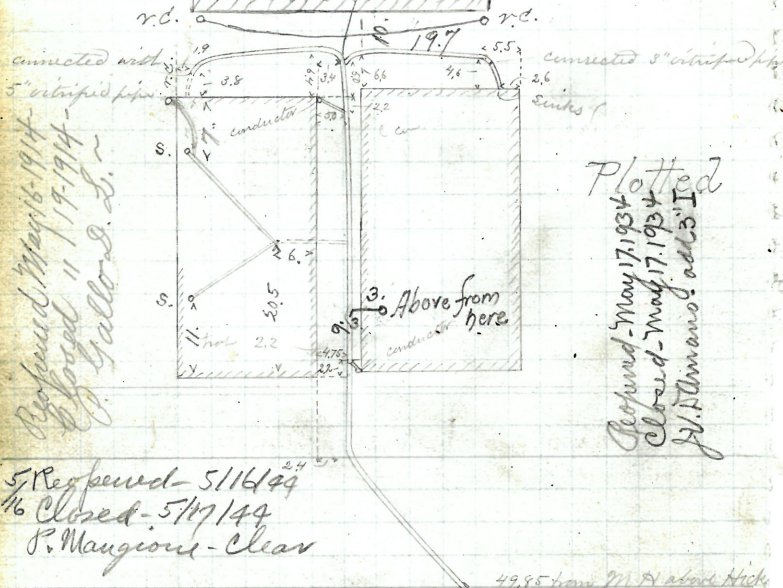
Closed " 9-15-1901 45th

Wm Bondy D. Co.

Reopened Aug. 17-1910.

Closed " 18-1910

Ch. Fello D. Co. -



Plotted

Reopened May 17, 1934
Closed May 17, 1934
W. D. Mans. ad 5. I

5 Reopened - 5/16/49

1/6 Closed - 5/17/49

P. Mangione - Clear

Atwells Ave

53482 from Bonne St

Edward M. Clary

Cor. ~~Hicks St~~ Atwell's Ave #35-39

Alfred Munnichell

D.L.

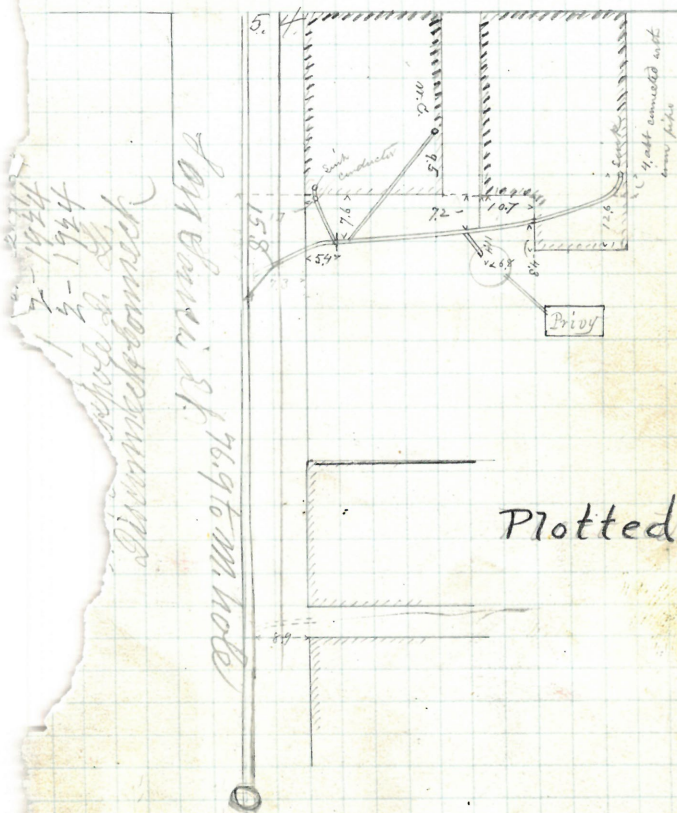
Pumpit 732 &

Cut at curb

Opened Nov 18/874

Closed .. 21/874

Atwell's Avenue

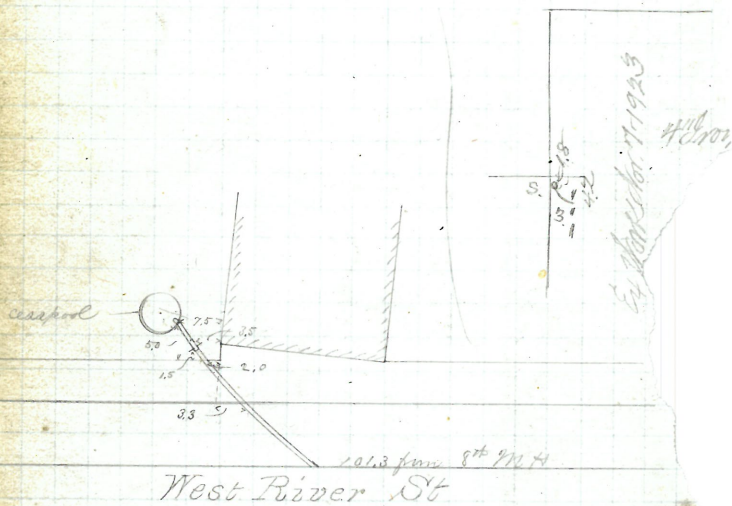


Enters down 76.9' South of main hole
 11.11' above St.

Bernard McEnulla
 59 West River St.
 John O'Donnell
 Permit 786
 Cut at curb 102

Opened Nov 18 1874 101.3 pm 8th St
 Closed " 20 1874 2 hours per day
 Reopened Nov. 13-1923
 Closed " 19-1923
 J. J. O'Donnell, S. L.

Plotted



came up one 3ft pipe at curb

13.4 pm 8th St

Avery Petter

93 - 95 West River St.

John O'Donnell
D.L.

Permit 753-754

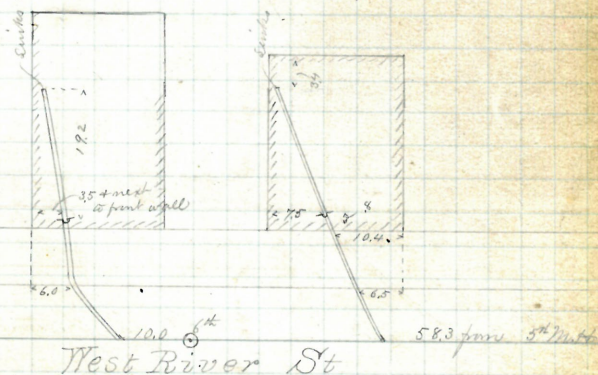
cut at curb 10.35

Opened Nov 18, 1874 upper m 10.25

Closed " 20 1874

Reopened June 13, 98 - D. Holmes D.L. Advice of
 Closed " 14, 98 - Iron put in place of clay for
 - m.c. where sink was -

Plotted



West River St

Both drains came up one pipe at curb

66+11.0

Removed

Anthony B Arnold
136 Friendship

Frank Holden

Id

Permit 728

Cut at curb 8.7

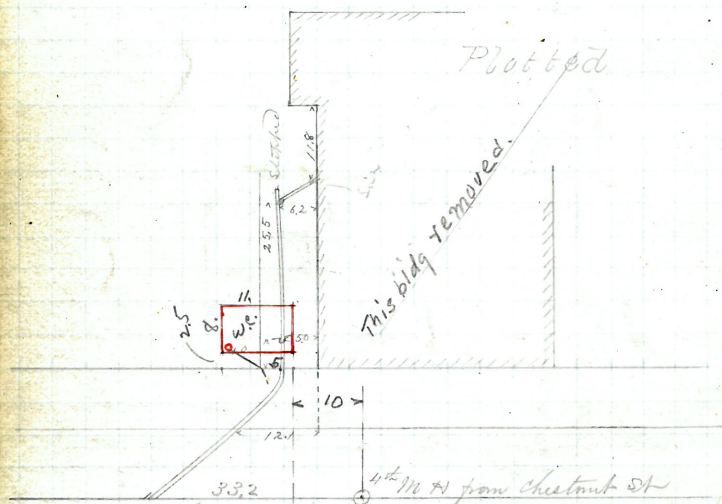
Opened Nov. 19, 1874 For Exp. Work done under this perm

Closed " 23 1874 Aug. 10, 98. see Book 182 Pg 151

10/ Reopened - Oct. 30, 1935

12/ Closed - Nov. 13, 1935

M. Callenine - Add W.C.



C. F. Anthony
40 and Lockwood St.
Jason A. Blackman

Permit 779
Cut at curb 9.8

Opened Nov 19 1874

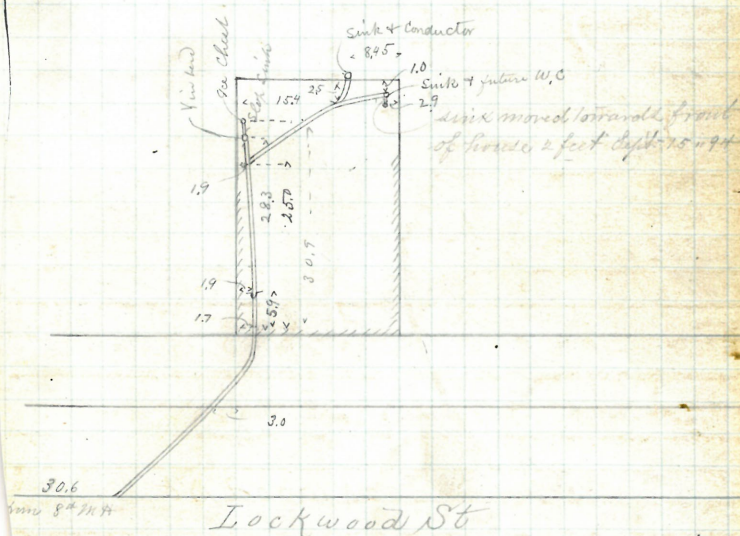
Closed " 24 1874

Reopened Sept 15 1894

Closed Sept 15 1894 1" lower below opposite W.C.

E. W. Kennedy & Co. 306 pm 8 11 1894

Plotted



W.C. plan

Thomas Leach

114 Lockwood St

Ada K. Lilly

Id

Permit 743

Cut at curb 9.7

Opened Nov 19 1874

Closed " 24 1874

Reopened Sept. 5-1918

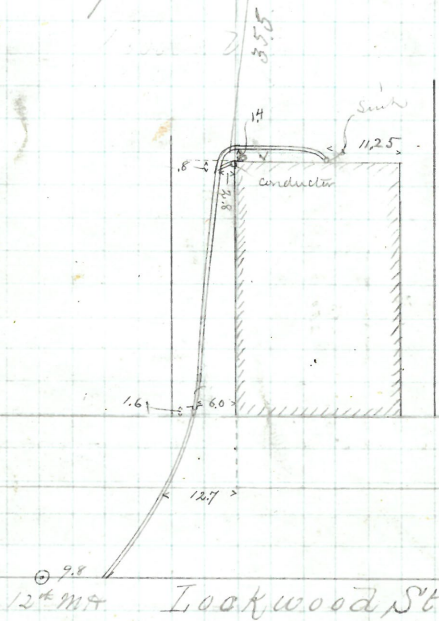
Closed " 6-1918

W. B. Doherty A. E.

Per. Oct 7/32

W. B. Doherty A. E.
blanet

P/11ed



75/11/18/19

Michael Mulvey

54-58 West River St
John Connell

Permit 783-784:

Out at curb 10.15


Opened Nov 19 1874 Lower one 10,25

Closed " 21 1874

Reopened Sept-24-1878

Flora 25-1172, 9 Keonst 6 leaves out

Reopened July 11, 98 12 m.c.

Closed " 11/11/98  5.5

Wm Bondy D. D.

Received March 20, 1899

Closed. " 24, 99

Wm Condrei D. L.

Relax -

Proposed & Closed

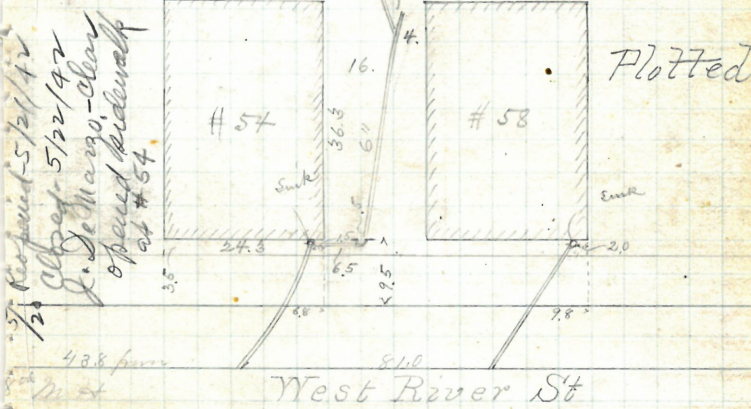
Oct 29 - 1907 Bu

W. Miller D. L. - Alter

Received May 3-1917

Closed 11-4-1917

M. Lewis D. S. Elwood



came up two pipes at curb and put corks in top of trap on both these drains, main pipe stopped.

James Tiffany
 70 Ship St.
 Willard W. Vickery
 L.L.

Permit 781

cut at curb 10.2

Opened Nov 20 1874

Reopened Oct 22 1945

Closed " 27th 1874

Closed Oct 23 1945

Reopened & closed Apr. 8 1898 add T in place of W

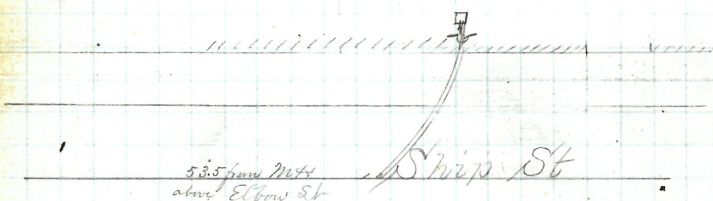
J. Deary D. S.

same loc. C. Lee B.S.

Reopened Nov. 7-1912

closed " 7-1912.

John Deary D.B. (New Bld.)



75 feet 1600

Alexander H. H. H. H.
 #5 Broadway Cr. Aborn St.
 Alfred Munnell
 S.L.

Permit 712
 Cut at curb 9.2 both

Opened Nov 20th 1874

Closed " 25th 1874

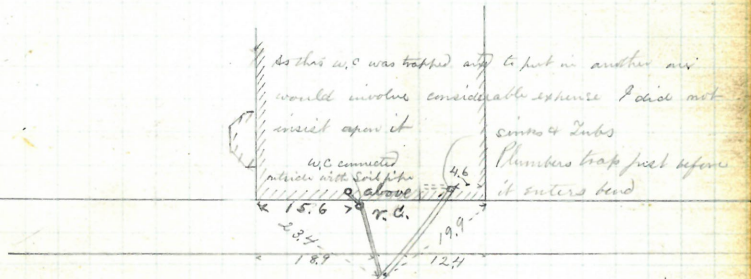
Reopened Aug. 7-1903

Closed " 8-1903

P.O. Connor D. L.

567 p.m. 1st 711

Plotted



567 p.m. 2nd 4
 near Broadway

Aborn St

Robert W. Pugh
84 Benevolent St.

David W. Barney

Barney 780

cut at curb 8.95

Opened Nov 20th 1874

Closed " 28th 1874

43 ft. from NW corner Benevolent St

Plotted



Hugh Mahan

47 Walling St.

John O'Donnell

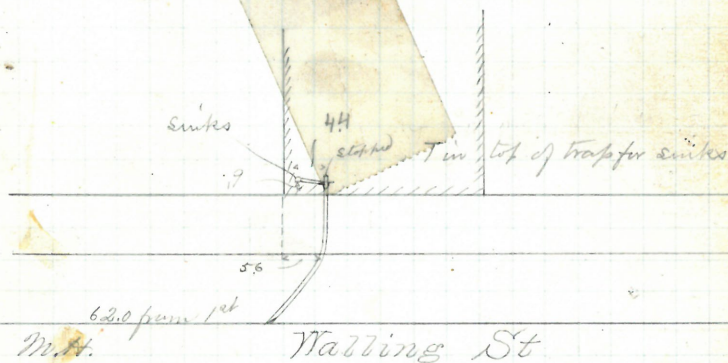
D.L.

Permit 785

Cut at curb 7.5

Nov 20th / 1874" 21st / 1874

Plotted



60' from building

Thomas Smith

29-31 West River St.

John A. Darnell

DL

Permit 768

cut at curb 10.

Opened Nov 20th 1874Closed " 21st 1874

Reopened to C.O., Feb 8/94. - Lyons DL

Plotted



169
2

43

Joseph B. Chace
22 Stwells Avenue
John R. Brown

Permit 687
cut at curb 7.0

Opened Nov 19 1874

Closed " 19 1874

Reopened Oct 17 1910-

Closed " 18 1910-

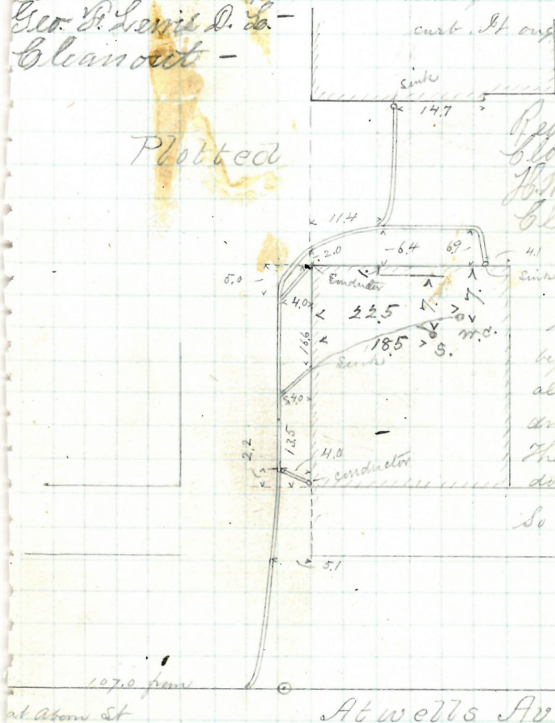
Geo. B. Lewis D. Co. -

Cleanout -

By a mistake of Mr Smith,
this drain was run on a
straight line from the sewer to the
curb. It ought to have been 9.6

Plotted

Reopened Nov 24 1915
Closed " 26 1915
Geo. B. Lewis D. Co.
Cleanout



The measurements
beyond the traps were
all taken after the
drain was put in.
The work having been
done in the yard first.
So I don't swear nothing.
Rip

Atwells Ave

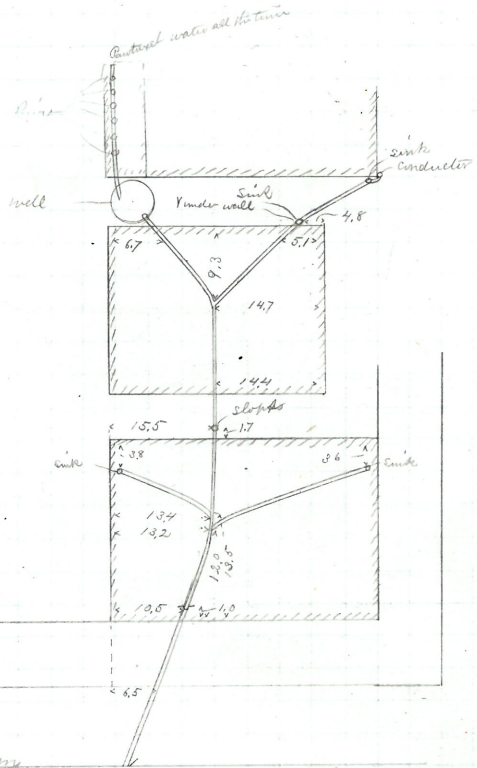
44

James & Catherine Vallity
 #140-144^{N.E.} Corner Richmond & Fallmans Lane
 James T. D. Cudworth S.D.

Permit 788
 cut at curb 9.9

Opened Nov 24th 1874
 Closed " 27th 1874

Plotted



Fallmans Lane

64.6 from
 2nd M.H. from Ship St Richmond St

Removed

45

F. A. Arnold

185 Friendship St.

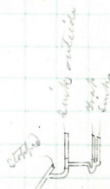
Thomas Phillips & Co
D.C.

Permit 710

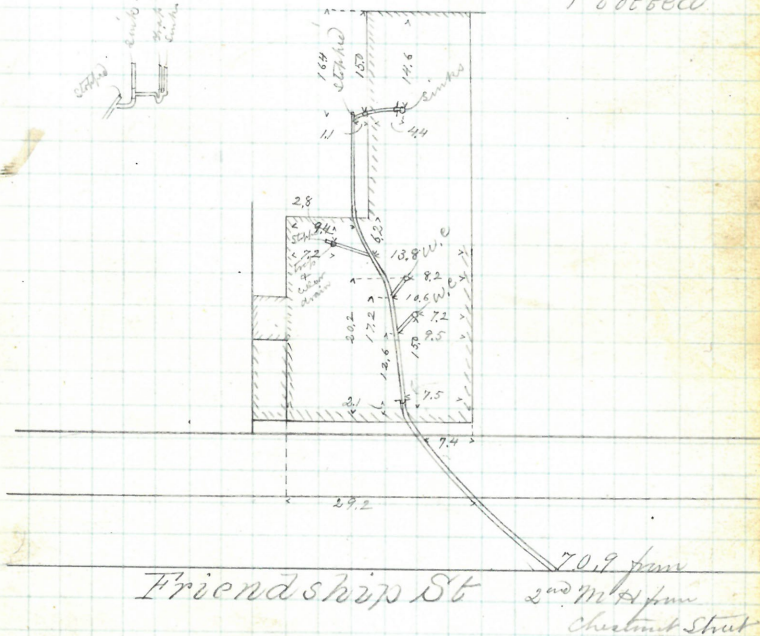
cut at curb 9.8

Opened Nov 24 1874

Closed " 28 1874



Plotted



125
Hannock

City of Providence
 Thayer St ^{Trm} to Charles St
 Wm Andrews & Sons
 D.S.

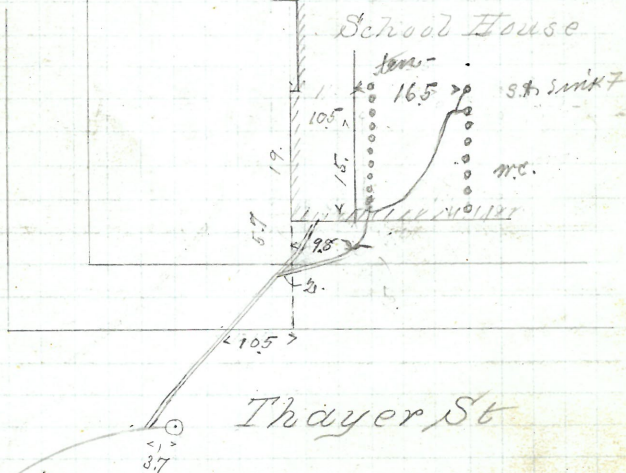
Opened Nov 24 1874
 Closed Dec 1st 1874
 Reopened Dec 5-1878
 Closed " 7-1878
 Reopened Sept. 25-1908
 Closed Oct 1-1908
 J. Deary D. S.
 Reopened July 25-1910
 Closed " 30-1910-
 J. E. Keenan D. S.
 Reopened Nov 8, 1943
 Closed Nov. 8, 1943
 R. Frotta-Clear

Project 786
 Cut at curb 9.9
 Reopened Aug 23-1901
 Closed " 26-1901
 J. Deary D. S.

14' 4" C.

Plotted.

Charles Street St



Connected at curb by coming up and
 joining 6" vitrified pipe, then put in a
 trap as shown

47

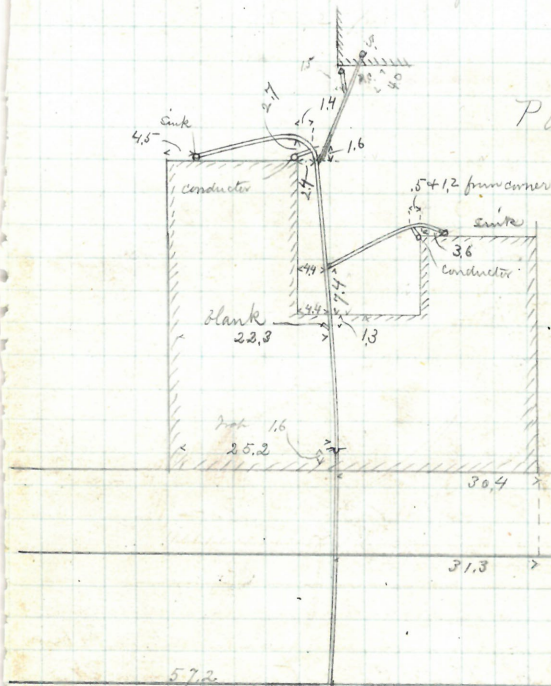
Permit 742

Cost at curb 9.95

Opened Nov 28th 1874

Closed Dec 2nd 1874

Opened to extend Sept. 10, 1877



```
from 1st N H above Burrill St
```

High St

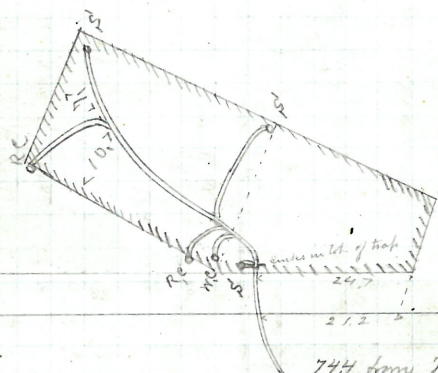
190. *Brach*

John Mc Carron
2-6 Hedley pines 79 West River St
John O'Donnell
S.L.

Permit 791
Cut at curb 9.2

Opened Nov 24 1874
Closed " 25 1874
Opened to Eptand May 11-1877
Closed " 12-1877

Protected



West River St 74.4 from M & below
Walling St.

James M^c Gleaner
10 Walling St.
John A. Gleaner

Permit 789

Cut 1/2 inch

opened Nov 24 1874

Closed " 27 1874

opened June 8 1897

Closed " 19 1897

J. H. Cassidy D. L.

Reopened July 1897

Closed " 21 1897

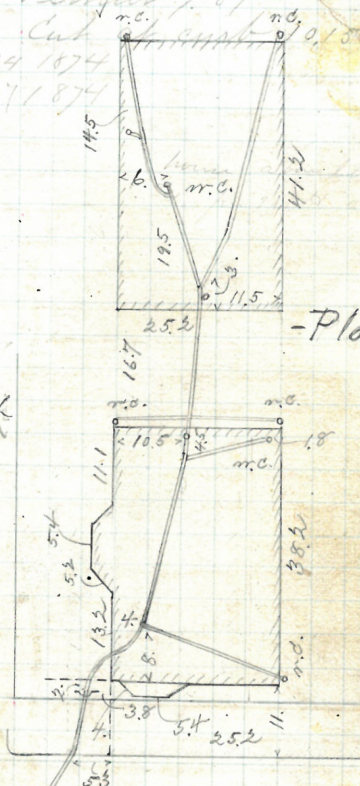
J. H. Cassidy D. L.

A. C. shown before

Reopened July 20 1917

Closed 1917

J. Hill D. L. Gleaner



-Plotted-

Walling St
from Nichols St

185 from Nichols

Thomas Smith
22 Walling St.

John O'Donnell
D.L.

Permit 792

Cut at curb 9.45

Opened Nov 24 1874 Reopened Oct 30 1893

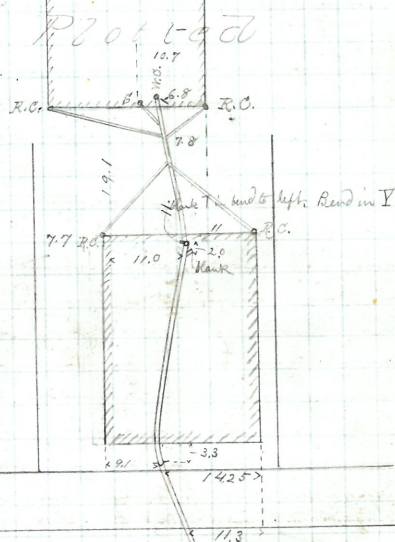
Closed " 25th 1874 Closed Oct 31 1893

Reopened Dec. 1-1910-

Closed " 1-1910-

A. Kello D.L. - Cleaned

L. D. Bagley D. L.



92.8 from 5th M.

Walling St

44.5 from Walling St

Eliza B. C. Brown
83 Benevolent St.
Thomas B. Ross
D.L.

Permit 790
Cut at curb 9.7

Opened Dec 1st 1874
Closed " 3rd 1874

Reopened Apr 18 1899 75 ft from 111 N. and clo F.W.

Closed " 22 1899

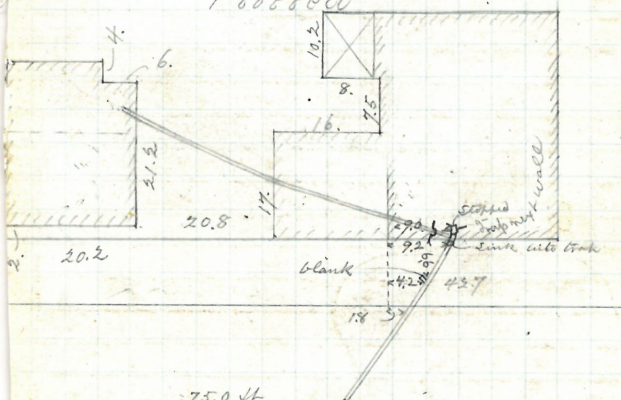
J. W. Furlong D.L.

Reopened - Jan 2, 1939

Closed - Jan 2, 1939

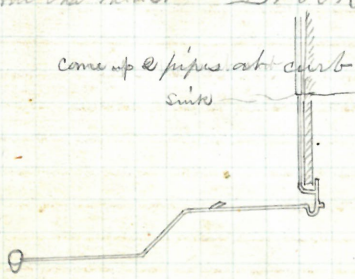
A. Squizzero - Addaboe.

Plotted



75.0 ft
on 2nd 111 ft from the F.W. Brook St

come up @ pipes at curb
Sinks



52

P-157
19Formerly City of Providence Now Thomas F. Morahan
Police Station No 3221
223

185 Wickenden St

H Black 9 Low

Permit 577

Cut at curb 8.

Opened Nov 25 1874

Closed Dec 22 1874

Reopened Nov 3-1887 by Denis McParthy D.L.

Reopened Apr 26 1894

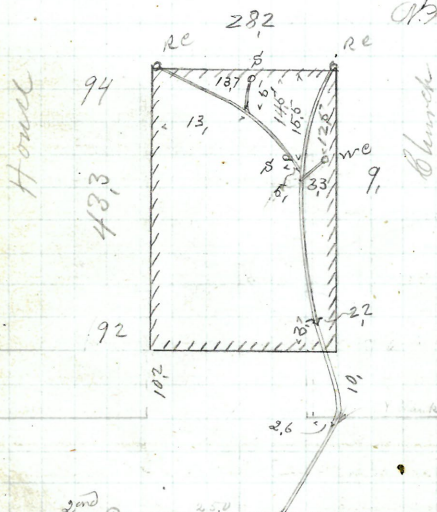
Closed Apr 26 1894

Cleanout

Plotted

Reopened + Closed Nov 22

W. H. Bolgrove, L. Cleanout



37 Lockwood St.

Jas. A. Blackmar

Al

Permit 771

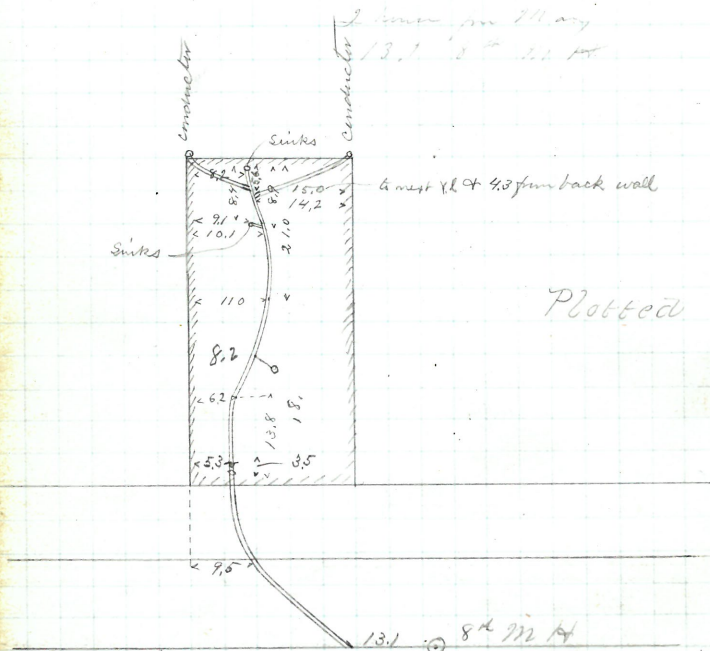
Cut at curb 2.8

Opened Nov. 25 1874 Recd. Mar. 29/79

Closed Dec. 2^d 1874 Closed
L.P. Trudon & L.

L.P. Trudan D.L.

I have for 24 days



Plotted

Lockwood St

GONE

55

Owen Baylun
55 Lockwood St.
Sea R. Lilly

Permit 793
Cut at curb 9.6

Opened Nov 2nd 1874

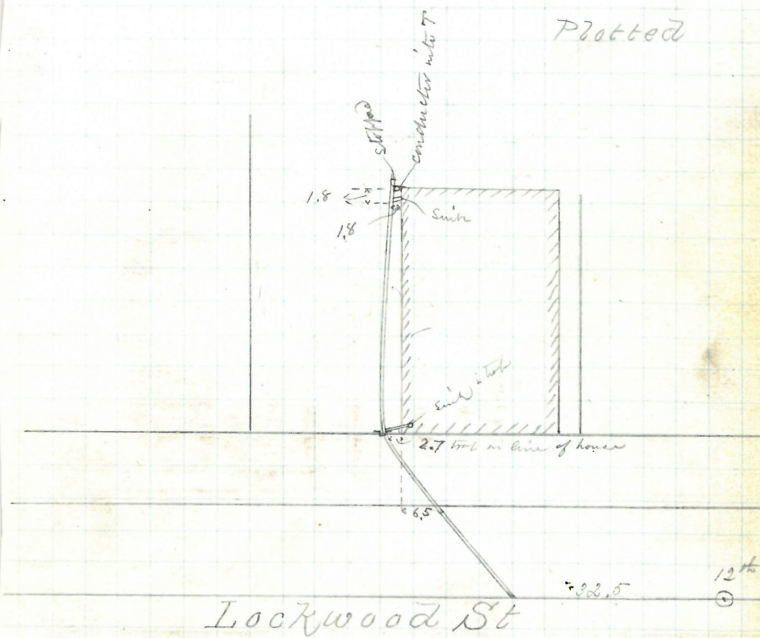
Closed Dec 2nd 1874

Reopened July 10 - 1878

Closed " 10 - 1878

Go to clean out - found broken
Cover & trap in pipe

Plotted



94 ft from Plain St

4P 170-3

Gannar. Corrigan

22 ~~St~~ Bourne St.

Alfred Wendell

DL

Persipit 782

Cut at curb 8.4

Opened November 26 1872. Roman. No. 10. 100.

Cloud Dec 1 1874

Reopened mch. 9, 94

Closed. inch 10.94

H. M. Goldrick D. L.

Received July 1919

Closed 11-11-1919

St. W. Holgrave D. L.

Received Mar 5. 1928

Closed

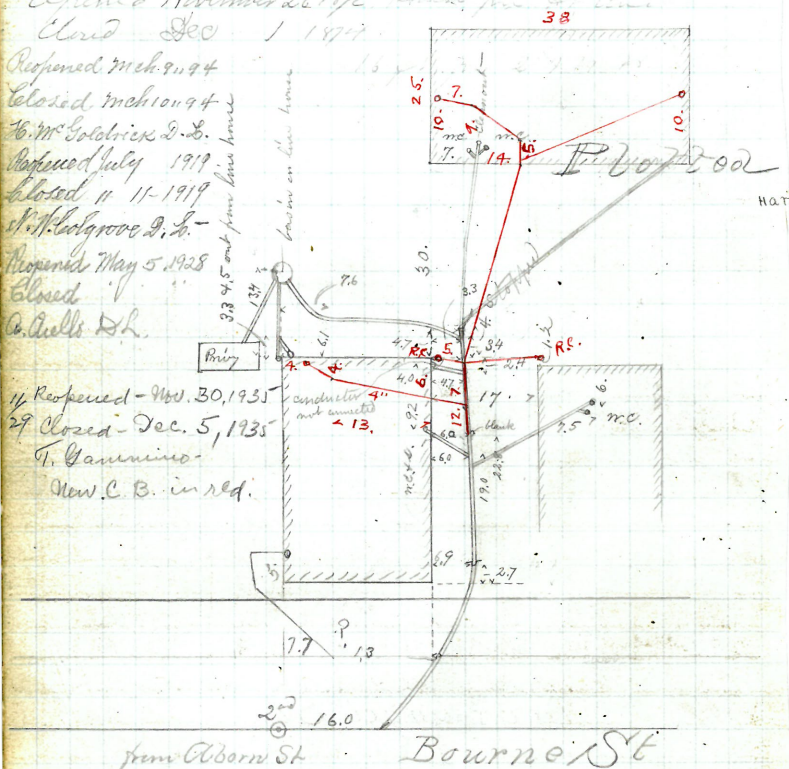
A. Quells DL

1/2 Reopened - Nov. 30, 1931

29 Closed - Dec. 5, 1935

T. Gammico-

New C. B. in red.



135th Ave. Allendale Ave

M. E. Church

Hope St. in Power St.

Ellery Willard

Id.

Benefit 7624796

cut at curb 9.2

Opened Nov 25 1874 upper one 9.25

Closed Dec 3 1874

Reopened June 7/28

15.4 from 2nd 21.6 ft

Closed June 7/28

53.4

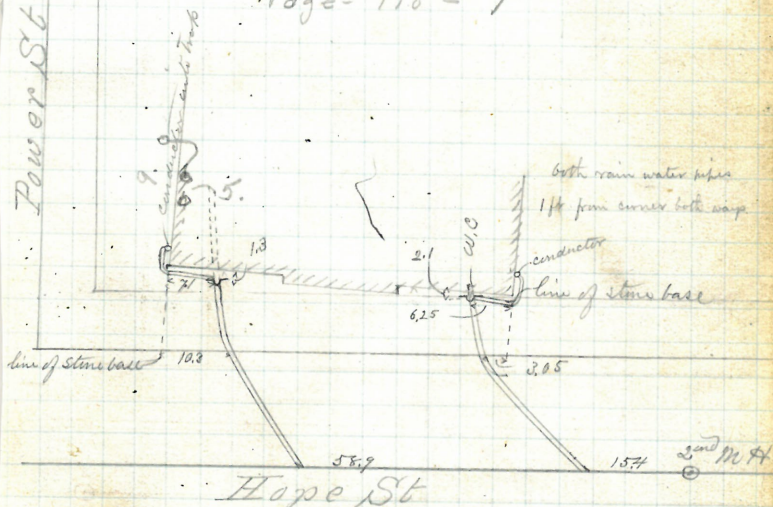
W. Fogarty St.

Reopened June 3, 1940

Closed June 3, 1940 Plotted 6

Cur. Taft - repair see Book - 2695

Page - 110 - 7



58

P-157
19James E. Cranston
419 Benefit St
John W. BriggsPermit 734
Cut at curb 9.4

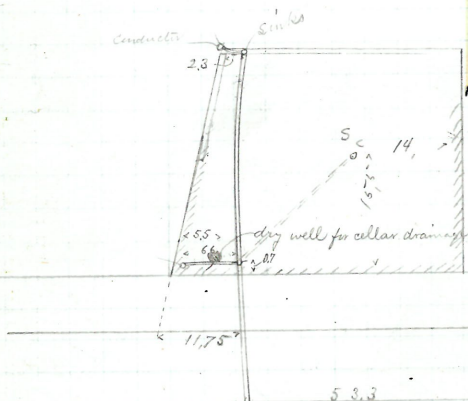
Opened Nov. 28 1874

Closed Dec 3 1874

Oct 25-1882 by J. B. Horton D.L.

" 25-1882

Plotted



Benefit St

J. M. H.
from Sheld

140 ft from Benefit St

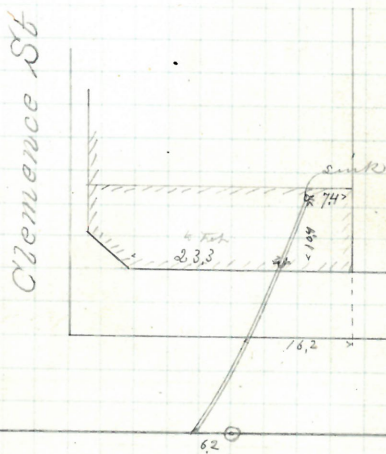
Wm H. Charnley
 44 Fountain St corner Clemence
 Nathan B. Horton
 S.D.

Permit 765
 Cut at curb 7.2

Opened Nov 30 1874
 Closed Dec 2nd 1874

6.2 East of M.H.T.

Plotted



Fountain St

Wm E Manchester

7-9 West River St
John A. Donnell

Passy 1-797

cut at curb 9.75

Opened Nov 27 1874

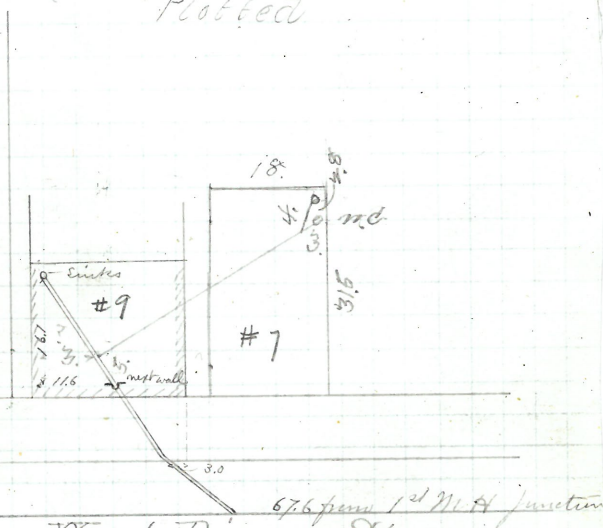
Closed " 28 1874

Reopened Nov 2-1921

Closed " 2-1921

C. E. Riccitelli D. L.

Plotted



West River St

came up two bonds at curb

61

405-407-409 Benefit St.

John W. Briggs

SE. CO. TRANSIT
S+.

Penn't 738-739

Cut at cost 9.75

Opened Nov 26th 1874 Lower one 9.6

Closed Dec 9th 1874 Reopened 22 1950

Reopened Dec. 6th 95. (11)

closed " 9" 95

H. R. Chadsey D. L. 147 ju. 2 1/2 H. cm. H. 1/2

Blind Drain

Rec May 22 1950 5/22/1

Recd May 23 1950 57

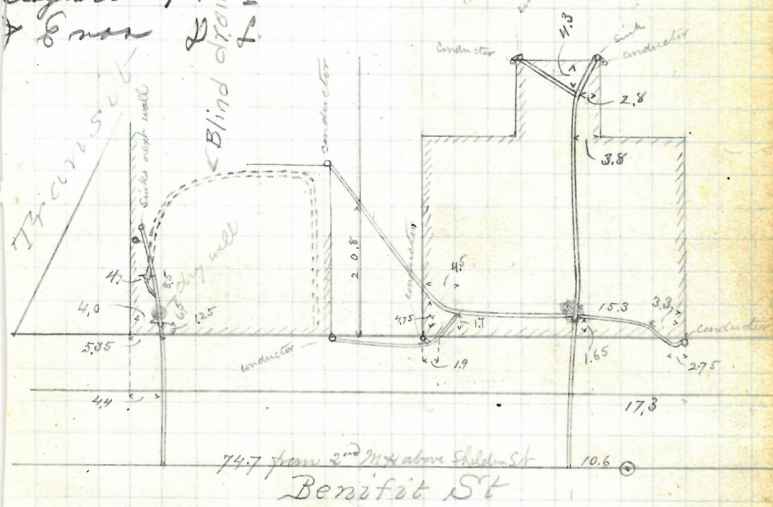
clo. May 22 1950 1/22/50

Clo May 23 1950 3/23/

add J J Enos DL

clay with 4" I

Don't



62

Removed

Robert Morrow

A.E. Co. Cent & South Main Sts #348-3

Thomas B. Ross

S.L.

Permit 799-800

cut at curb 9.0

Opened Nov 30 1874

Closed Dec 1st 1874

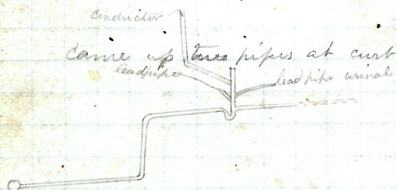
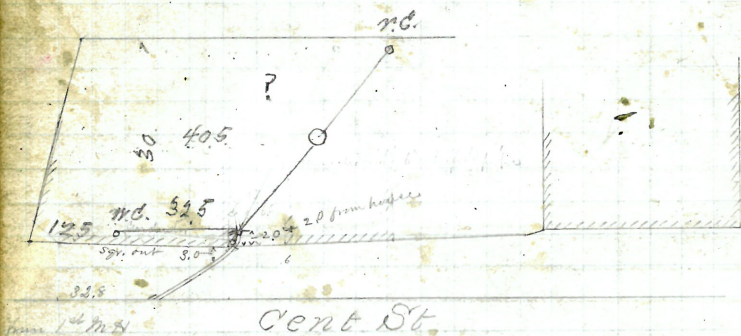
Reopened Mch. 31-1920

Closed Apr. 1-1920

M. H. Kelly, S. L.

534

Plotted



354-8

Benj. F. Gilmore

255-260 Westminster St

John B. Bradley

stopped under wall

D. S.

Opened Dec 1 1874
 Closed " 21st 1874

Reopened Oct 11-1918

Closed " 12-1918

J. Curtiss D. L.

Reopened Dec 14 1927

Closed Dec 14 1927

J. Curtiss D. L.

Clean out

Per Act. 17/32

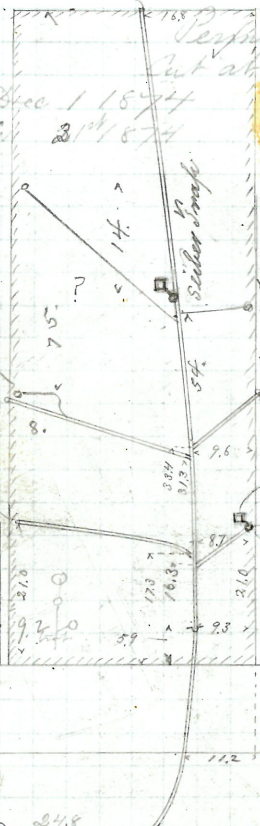
W. L. L.

M. L. L.

Rep. Apr. 1. 1933

May 8. 1933

J. R. Douglas and



Permit 800

Set at curb 8.3

Reopened May 1-1917

Closed " 3-1917

J. Curtiss D. L.

Reopened Nov 22-1917

Closed " 22-1917

J. Deary D. L.

Plotted

Siber Trap

Old Stock 4"

Per M. 21

Old 22/32

M. M. Hally D. L.

Clean

M. H. above Sun St 24.8

Westminster St

Reopened Sept 16 1930

Closed Oct 16 "

Sanatos D. L.

10 pm Sun

Mary E. Luwini
61 Congdon St.
John B. Earle

D.L.

Permit 500

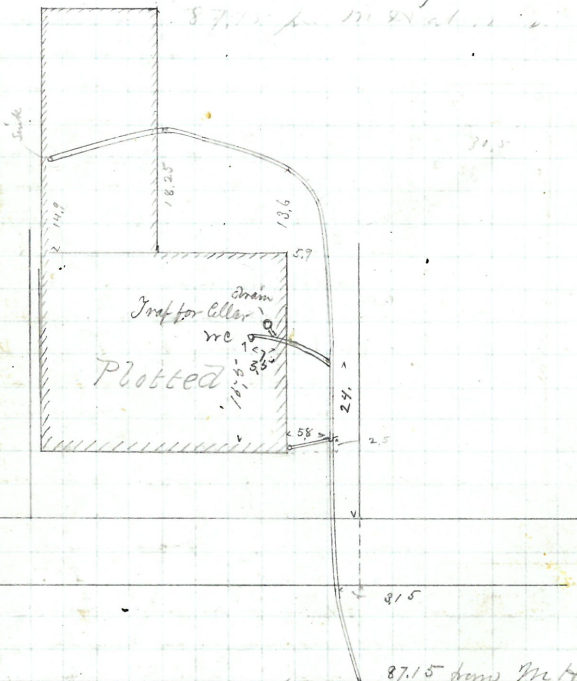
Cut at curb 7.0

Opened Dec. 1st 1874Closed " 16th 1874

87.15 from Mt. Cushing St

87.15 from Mt. Cushing St

Reopened April 19-1875
" 20-1875
" 20-1875



Congdon St

87.15 from Mt. Cushing St

Came up sewer at curb

10' 5' from Cushing St

George R. Earle
161-169 Benefit St.,
David W. Barney Lt

Permit 824
Cut at curb 7.9

Opened Dec 2nd 1874

Cloud " 1874

43.8 from S. W. 19

Proposed Apr 26-190

Refused " 27-190

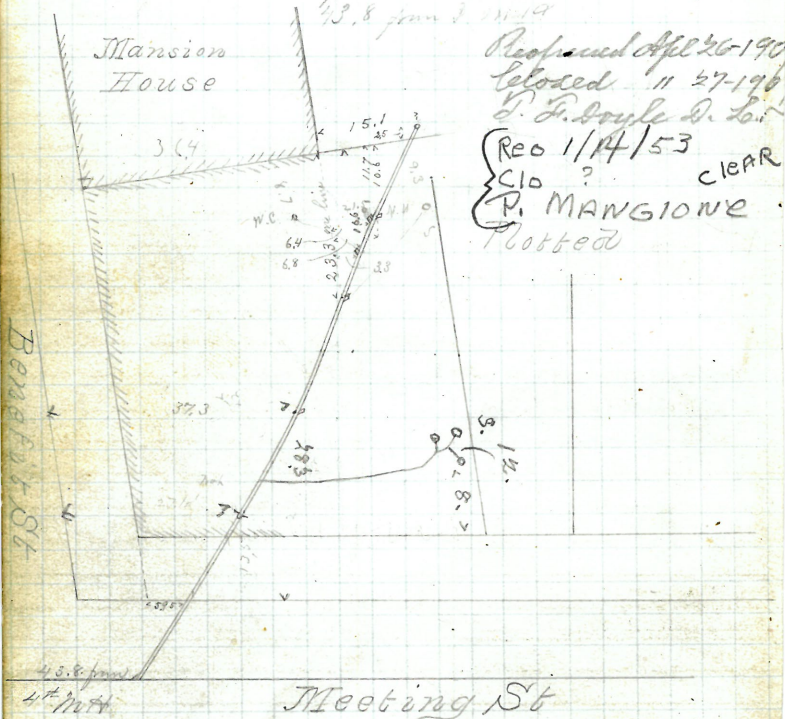
D. F. Boyle D. L.

Req 1/14/53

CID ? CLEAR

P. MANGIONE

Plotted



12.5
3.4
1.6

12.5
10.1
3.7
1.3
2.6
2.5
2.4
2.3

Wm H. Gale
 # 31 Pearl St (cor Pine St.)
 Asa K. Lilly

Permit 870

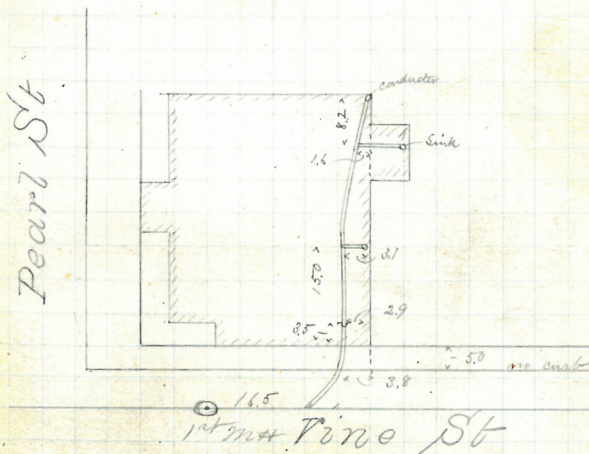
Cut at curb 8.2 abt

Opened Dec 2nd 1874 no curb set

Closed " 5th 1874

19.5 ft 1 11.1 ft

Plotted



City of Providence
 Thayer St. ^{new} ~~at~~ Meeting St
 Josephus Road

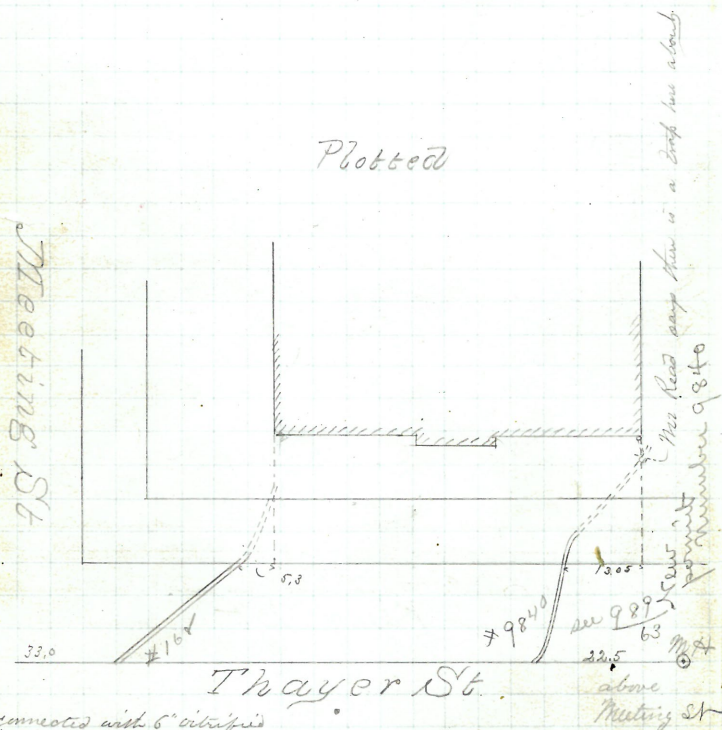
D.L.

Permit 168

cut at curb 9.6

opened Dec 4th 1874 Lower one 9.75
 closed " 17th 1874

Plotted



connected with 6" vitrified
 pipe at curb
 this one was also trapped

came up two pipes at curb
 and joined 6" vitrified pipe two
 pipes from curb

Mowry and Gaff
40 #47-57 Snow St.
Nathans Forer

Permit 807-808
cut at curb 7.6

Opened Dec 8th 1874

upper 7.6

Closed Mar 6, 1875 - Reopened Mch 23-1909

Reopened Sept 28-1918 - Closed " 24-1909

Closed Oct 1-1918 - J. J. Shanley D. L. -

J. E. Graham D. L. -

Plotted

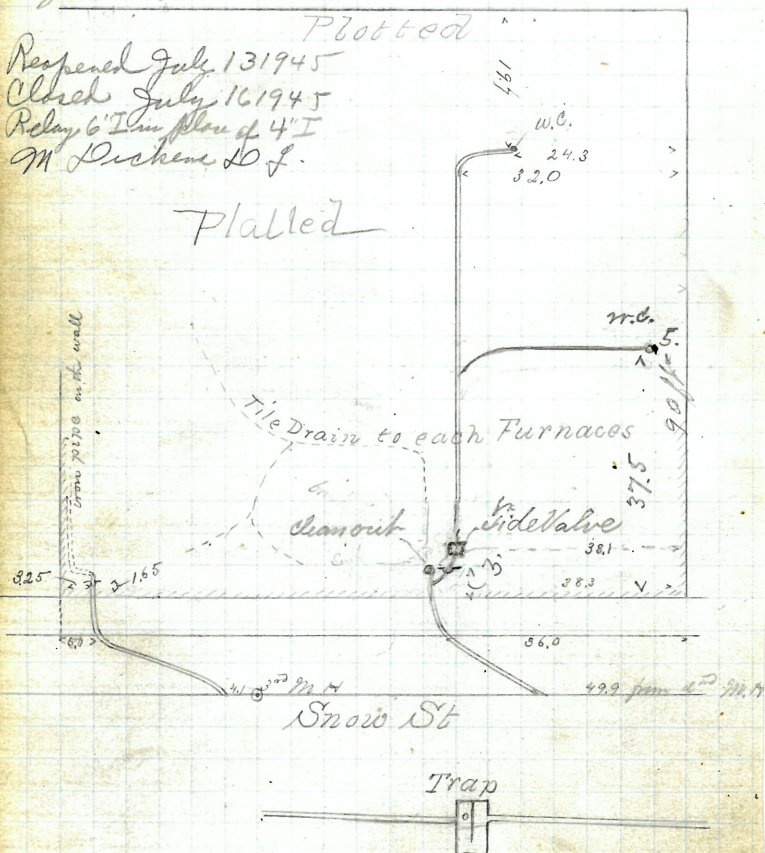
Reopened July 13 1945

Closed July 16 1945

Relay 6" I in place of 4" I

M. Dickens D. L.

Platted



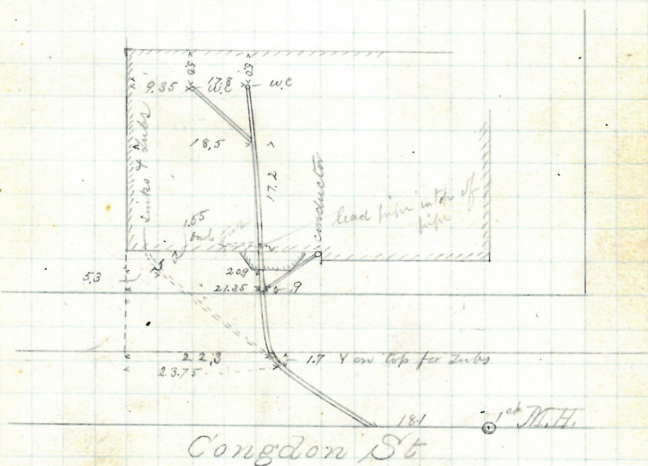
Francis W. Carpenter
 1 Congdon St.
 Wm Andrews & Sons
 S.S.

Permit 818
 cut at curb 9.45

Opened Dec 4th 1874
 Closed " 11th 1874.

181 ft from 1st 7/11/75

Plotted



from #7-9-11 Cong Ser

Permit 817

Cut at curb 9.3

Opened Dec 7th 1874

Closed " 24 1874

John A. Dinnell

Vol.

Surface drainage

Rev. Dec. 29 / 32

M. Rossi & Co

Plotted

last
two

The locations
of the last two houses were
taken when the cellars were
being built and they may
be a little out

Cory St

44.0 from

M. H. at Merrill St

Atwell's Avenue

Removed

75

Providence Tool Company
South Main St.

Thomas Phillips & Co

Permit 821

Cut at curb 84.5 ft

Opened Dec 8th 1894

Closed Jan 5 1895

Reopened May 18 93

Closed May 18 93

Phillips & Co. D. L.

Reopened Dec 8 1906

Closed " 11 1906

E. Graham & Co.

Reopened Dec 27 1897

Closed " 27 1907

Deary D. L.

Reopened Mch 18 1909

Closed " 22 1909

A. T. Chadsey D. L.

Reopened Mch 25 1913

Ray Matterson D. L.

Cut in trap.

Reopened Jan 18 1914

Closed " 19 1914

V. H. Colgrove D. L.

Reopened Sept 20 1919

Closed " 20 1919

H. A. Guddy D. L.

Reopened Dec 3 1919

Closed " 6 1919

W. Doherty D. L.

Plotted

Hartwing St

South Main
Street

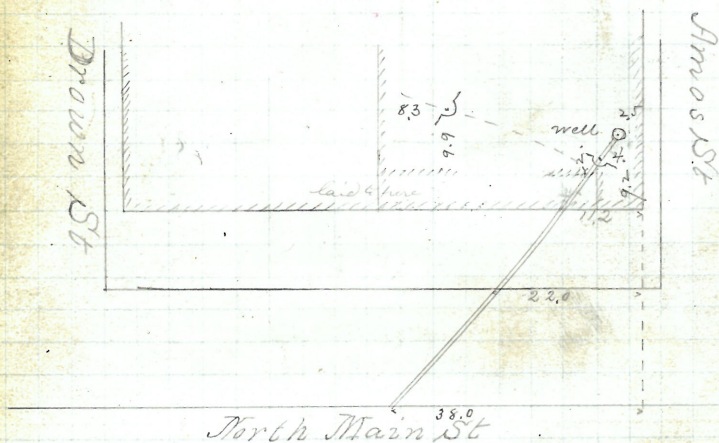
76

Henry S. Parsons
28-32 North Main St.
H.C. Read

Permit 816
Cut at curb 975

Opened Dec 9 1874
Closed " 17 1874

Reopened Dec - 19, 1893 } To set 2' new
Closed " 23 " } pipes, traps and
lay pipe to well
Plotted T. Phillips



G ONE

Belia J Lewis
64 Point St.
John W. Briggs

Permit 811.

Cut at curb 9.0

Opened Dec 12th 1874

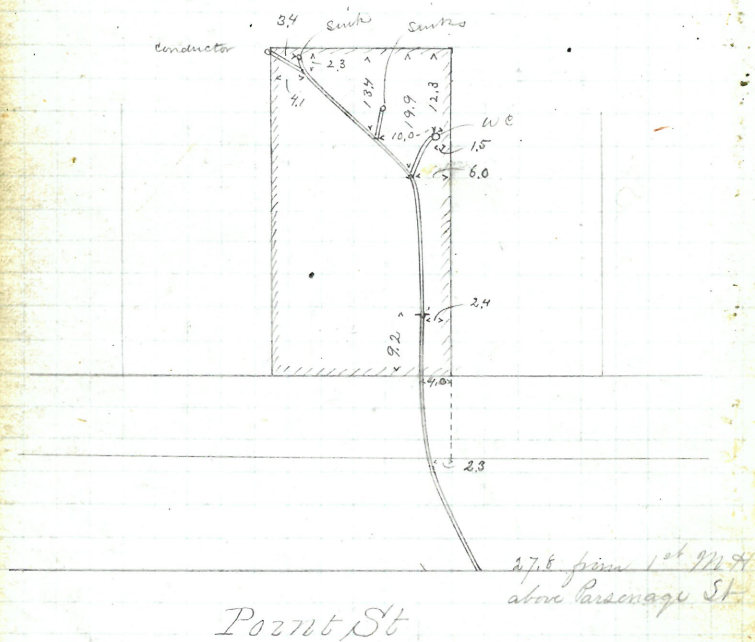
Closed .. 18 1874

Reopened by G. H. Fardon

Mar 192.

27.8 from 1st W. H. St. above Parsonage St.

Plotted



Mary A Dixon
63 Ship St.

Joshua R Brown
Sd

Permit 825
Cut at curb 9.6

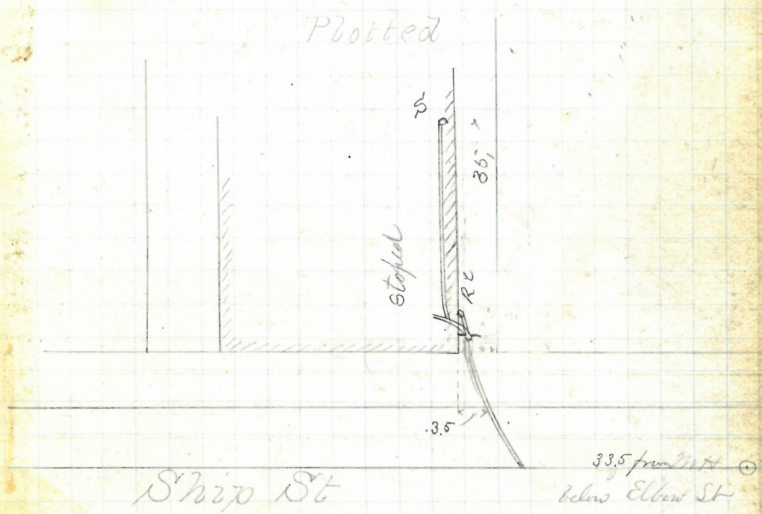
Opened Dec 18th 1874

Closed " 17th 1874

Reopened July 30-1888 by J F Read

Reopened June 9/30th 1891 by Elmer St

Closed " " "
W. R. R. L.



The connection was put in by the
Inspector on the wrong side.
Got a bevel connection and cut
it into the next pipe.
Ripley

Wm J. Bullock
 183 Angell St.
 William S. Read
 Lib

Permit 824

Cut at curb

Alonso Dec 1874

Chas " 1874

not to be done until Spring

Gano St

GONE

83

Terrance Greaguer
366 Wicken den
James Seguel

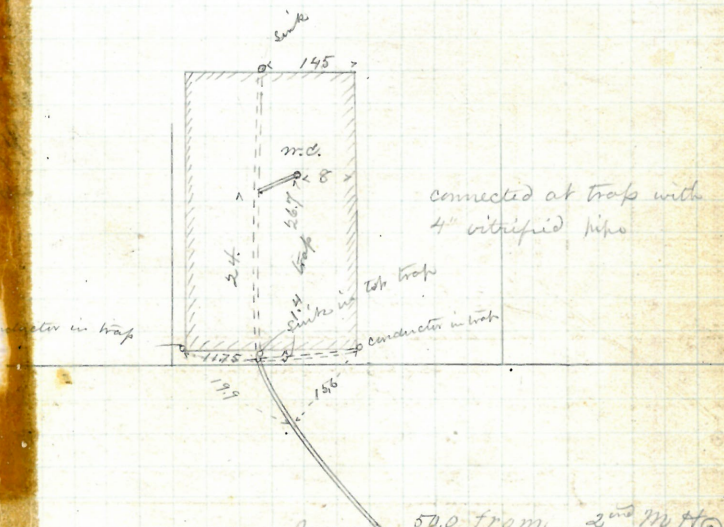
Permit 828

Cut at curb 7.6 m

Opened Dec 16th 1874

Closed " 18th 1874

Reopened & closed May 6th 97 - 11th Condry D. L.



Wicken den

175 ft from 2nd Mt. H.

Plotted

Oct 95

84 P 167
36

Adeline C.

367

Benefit St
Wm Andrus & sons

Permit 829

15-1874

18-1874

Cut at dist 3.75

Opened Dec 11

Closed

Referenced Oct 3 - 1878

Closed " 15 - 1878

Referenced Oct 21 - 1878

Closed " 25 - 1878

Referenced Oct 28 - 1878

Closed " 31 - 1878

Plotted

Referenced Oct 2 - 1878

Closed " 11 - 1878

Referenced July 31 1878

Closed July 31 1878

(See Return) - J Remond

Williams St

Abandon
C.B.

3.5

16.0

6.8

13.0

1.0

1.0

1.0

1.0

1.0

1.0

1.0

1.0

1.0

1.0

1.0

1.0

1.0

1.0

1.0

1.0

1.0

1.0

1.0

1.0

Benefit St

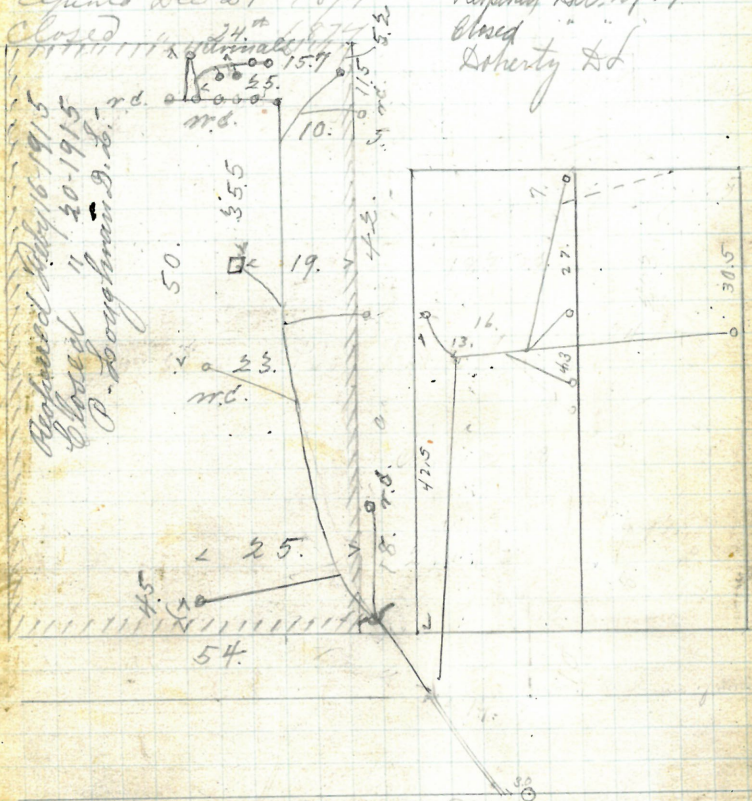
Samuel J. Howard
168 Thayer St.

Reopened Dec. 9, 1914
Closed 4 11, 1914
E. Gibbons D. L.

Josephus Read
D. L.
Permit 819
Cut at curb 9.0

Opened Dec 21st 1874

Reopened Dec. 16/29
Closed
Liberty D.L.



Reopened May 16, 1915
Closed 11, 20-1915
P. Doughman D. L.

Thayer St 2nd Mt H above/under

Reopened Feb 1915-
Closed 11, 24-1915-
E. Gibbons D. L.

Michael Turney

28-30 Wickenden St.

Thomas B. Ross

L.D.

Permit 831

cut at curb 9.4"

Opened Dec 18 1874 { Reopened June 3, 96
 Closed " 21 1874 { Closed " 4, 96

L. A. Blackmar D. L.

Reopened s.w. to Jim Cleanout

drain, Mar, 92,

by J. W. F. Jones

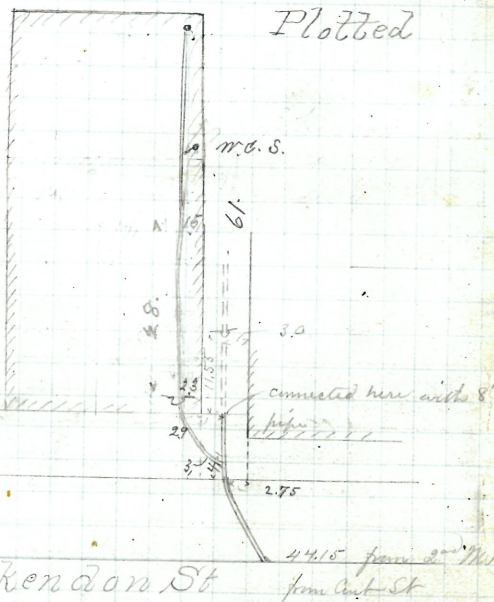
Reopened July 9-1906

Closed " 14-1906

M. J. McCormick D. L. -

w.d.

Plotted



Wickenden St

Came up two pipes at curb This drain is to be raised
 10 mm. against St in the spring from the curb

H. B. Bowen S.E. Cor. #3 John St.

Opened Dec 31-1894 389 Benefit St

Closed Jan 1-1895 7.0 Andrews & Sons

Reopened Oct 20-1904 17.7 Sol

Closed " 31-1904 Permit 823

P. S. Phillips D. L. - Cut at curb 193

Relay

Reopened Nov 9-1909 -

Closed " 9-1909 -

P. S. Phillips D. L. -

Reopened June 27-1910 -

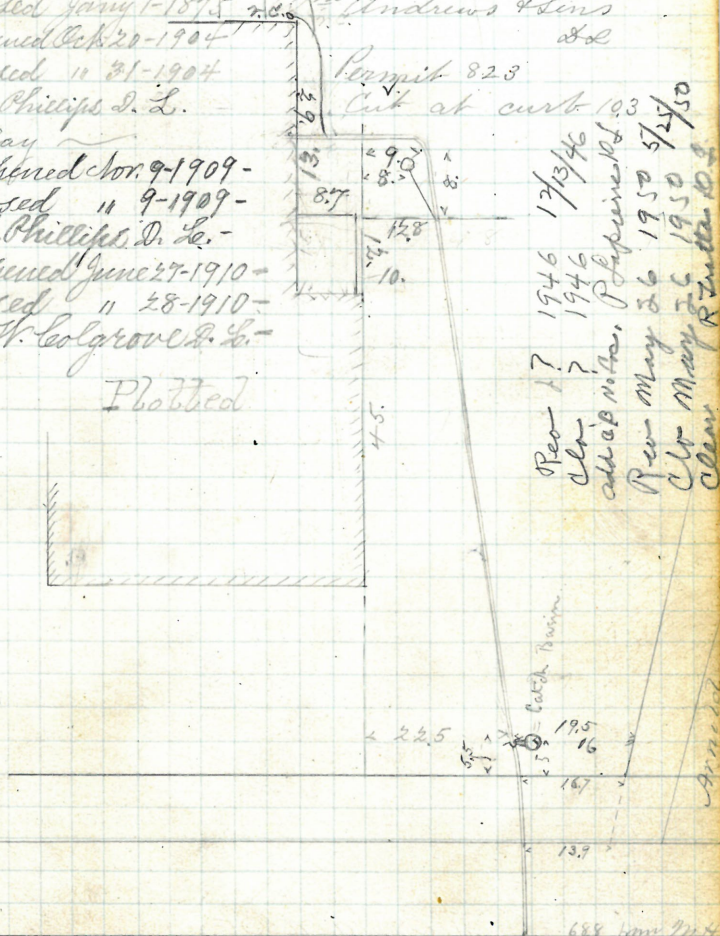
Closed " 28-1910 -

W. H. Colgrove D. L. -

Platted

John Street

Reopen 17 1946 12/13/46
 clear ? 1946
 all as noted. Paperwork of
 Rev May 26 1950 5/25/50
 clear May 26 1950 5/25/50
 clear



Benefit St.

689 from 9/1/4
 clear 1/1/4

GONE

Opened Dec. 21 1874

Closed " 22 1874

Reopened July 28 1894

Closed Aug. 3 1894

J. Deary D. D.

Plotted

Additional drain.

opened on ford

May 21 1875

Closed 24 1875

Opened to street July 5 - 1877

Closed " 6 - 1877

Reopened Dec 12 - 1877

Closed " 12 - 1877

Reopened Apr 26 - 1926

Closed " 24 - 1926

N. H. Carroll D. D.

Reopened - June 25, 1941

Closed - June 26, 1941

A. Ambrosio - Clear

3 Reopened - 3/13/43 Wickendon St

14 Closed - 3/13/43

C. Pons - Clear

250 ft from

Panel

Basin

Mary E O Neil

40-42 Wickendon St

Thomas B Ross

D. L.

Permit 833

Cit at curb

Reopened Aug 15 - 1885 by 13th

Reopened Dec 8 1897

Closed " 9 1897

L. E. Stevenson D. D.

Reopened May 15 1925

Closed " 15 1925

A. Mello D. D. Clear

Exp. Horse

Apr 26 1926

M.D.

10 26

19.5

13.85

Cleaned Relay

Aug 3 1894

2.4

400 2nd Wickendon St

Large tree poles on grade line
came up and from airport
temporarily turned back down

Corporation St Peter and St Paul

Broad St.

John A. Darnell
J.D.

Permit 832

Cut at curb 9.65

Opened Dec 21 1874

Closed " 22 1874

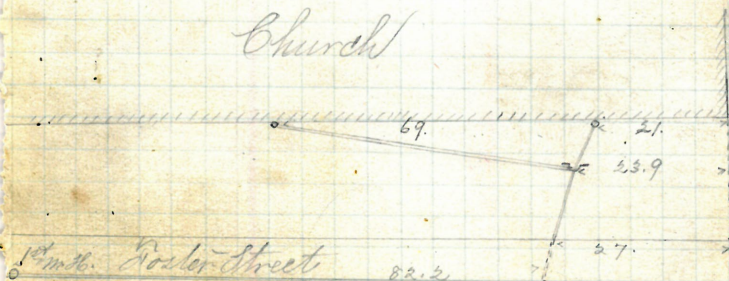
Reopened Dec 28 94

Closed Dec 30 94 222 ft. 1 in.

J. A. Darnell J.D.

Plotted

Church



Truman Beckwith

362 Brook St NW ex Waterman St
Wm Andrews & Sons.

Wm Andrews & Sons

Permit 834

But at curb 10.0

Opened Dec 28. 1874

Closed April 10 1872

Returned Mar 21. 193.

Box Ex-Work done under

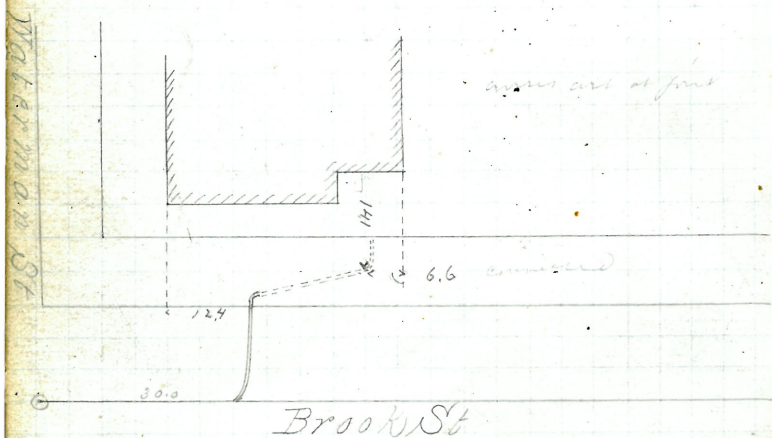
Closed - Mar 21. 1993

this Permit Dec. 2/1921

7. Clark - clear - replace

See Bk. No. 1337 Vol. No. 72

Plotted



George Henry Thayer Lt. SN
#167-171
Cdr. Cushing St.
Wm. M. Holloway
at

Permit 820

Opened Dec 29 1874 Cut at curb 93

Closed Jan 4 1875

Reopened July 24 - 1888 by J. B. Ross

Reopened Sept. 27-1924

Closed 11 27-1924

J. J. Morris D. L.

Received Dec. 12-1923

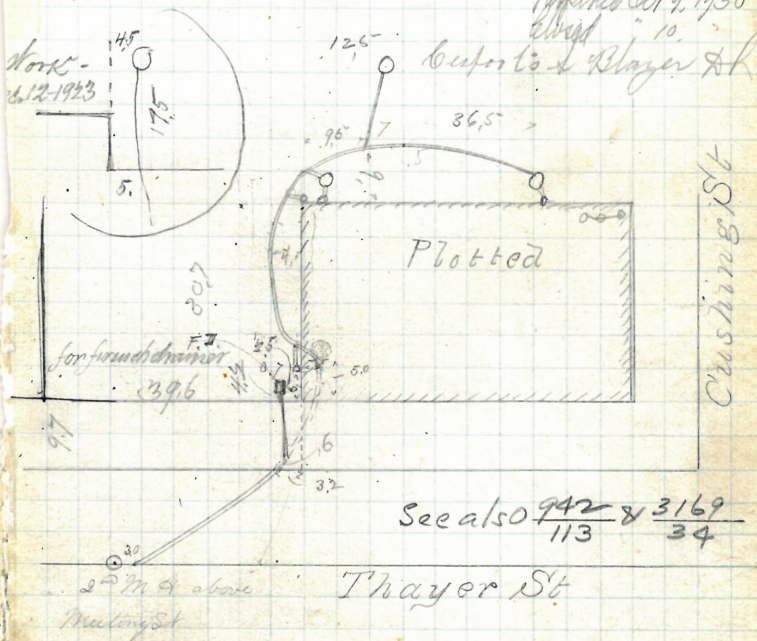
closed " 14-1923

J. J. Morris D. L.

Approved Oct 9, 1938

belonged to 10.

Support to Player & K



94

GONE

Daniel A. Pierce

118 Waterman St. N.E. Brook
Asa. K. Lilly

Permit 895

Cut at curb 7.8

Closed Dec 29 1874 Reopened Dec. 1915

Closed Jan 5 1875 Closed " 1915

F. A. Perrod. L. Chamont

b, Reopened - June 13, 1939

13 Closed - June 13, 1939

A. Diggerelli - Clear

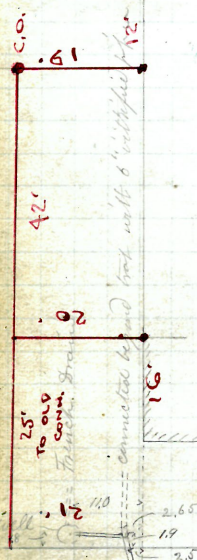
REOPENED 7/25/69

CLOSED 7/25/69

PL. T. OLEAN

INTO OLD CONN.

Plotted



crosses curb 5.5 south of line of house

Brook St.

Waterman St

Lydia J. Stillwell
72 Wickenden St.
Thomas B. Ross
S.L.

Permit 836

Cut at curb 9.15

Opened Dec 31st 1874. Reopened July 13, 1893

Closed Jan 2nd 1875. Closed July 17th

Reopened July 20, 1894. Reopened

Closed Aug. 2nd 1894. Closed

S. B. Ross S. L.

Reopened Dec. 21, 1898

Closed " 26, 1898

R. M. Goldrick S. L.

Reopened July 26, 1906

Closed " 27, 1906

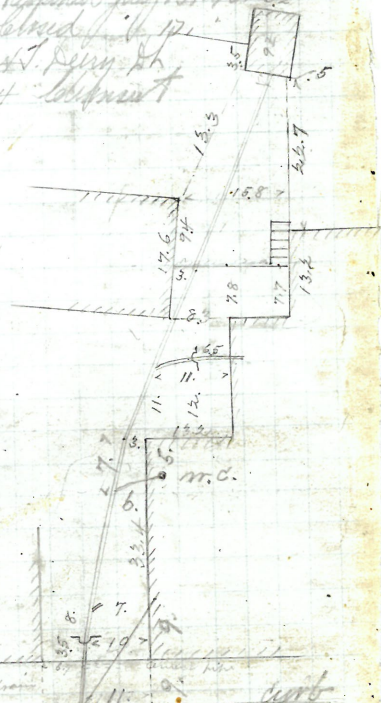
R. M. Hartley S. L.

For Ex. Work Oct. 20, 1926

Reopened Nov. 25, 1926. No. 63-

Plotted

Curved front facing



Wickenden St

Reopened Aug. 29, 1926

Closed Sept. 1, 1926

R. W. Solgrove S. L.

Reopened Nov. 5, 1926

Closed " 7, 1926

M. M. Salp S. L.

Reopened Dec. 3, 1926

Closed " 1926

M. M. Hartley S. L.

Blamout

Cent St

GONE

97

William J. Dorrance

186 North Main St.

Thomas Phillips & Co
Id

Permit 268

Cut at curb, probably at 8.0

Opened to extend from 5 1875

Closed " 8 1875

Reopened April 10, 99

Closed in 131.99 Plotted

E. C. Blackmar S. L. - Relay -

This drain was laid from the sewer
to the building line when the sewer was
built. A Trap was put in, as shown and
continued at this date



GONE

99

Sullivan Moulton

327-329-331 North Main St

Thomas Phillips & Co

LL

Permit 566

Cut at curb 5.3

Opened to expand Jan'y 15th 1875

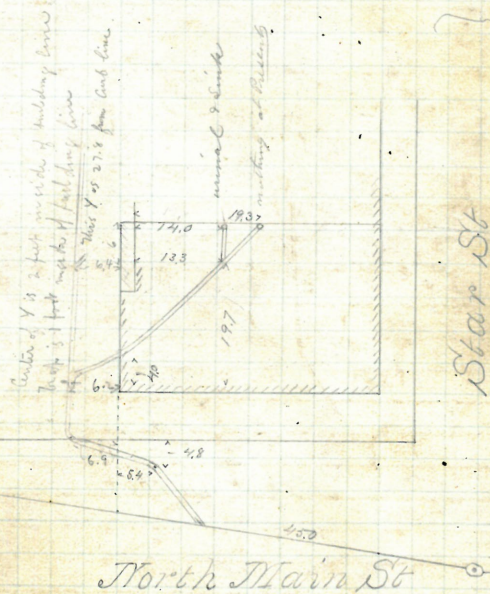
Closed

Jan'y 22nd 1875

to road house

From outside of house to point located in street April 1875

Plotted

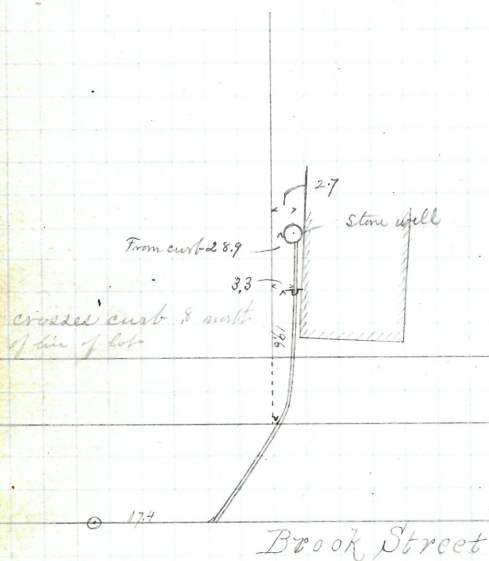


Marshall Woods
 Corner Brook and George Sts
 A.B. Seach and Sons
 S.S.

Permit 597
 Cut at curb 9.2

Opened Feb 23, 1875
 Closed Mar 9th 1875

Plotted



Dyer St Land Co

Corner Dyernd Orange Sts
Wm Seckell

D.L.

Permit 839

Cut at curb for connections

Opened Main 8th 1875 nearest Clifford and found

Closed " 10th 1875 ship St. was 7.0

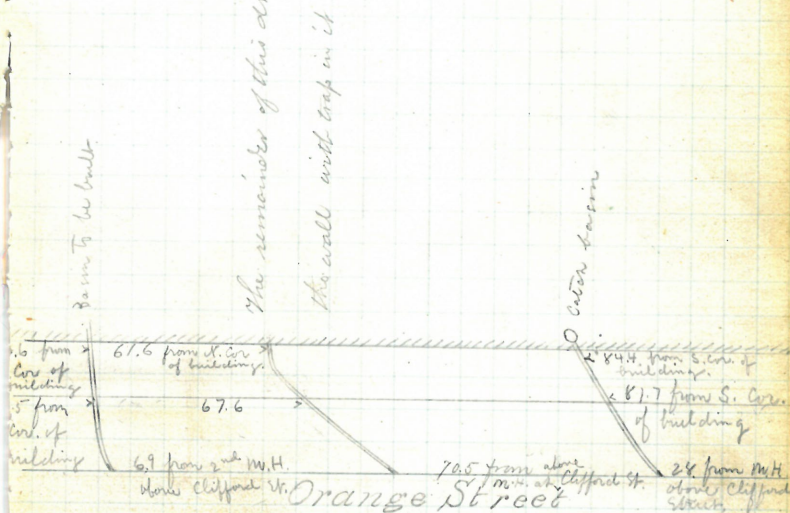
Reopened " 26-1877

Closed " 26-1877 70.5 from NW corner Clifford St

Reopened to Cleanout Aug 3-97

By H. R. Chadsey D.L.

Plotted



Plot on this page is the last
one made by Ripley.

NEW OWNER SPEEDY MUFFLER
KING

SEE B. P. 33
556

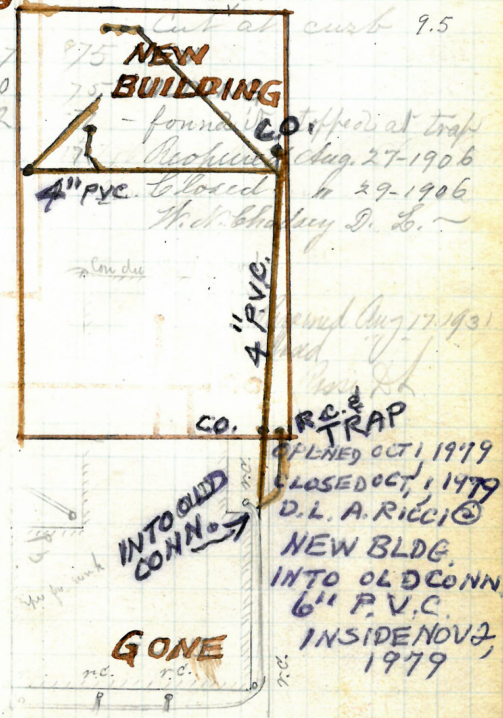
Opened April
Closed " 10
Opened to Examine Dec 12
Closed " "

Raised 1 pipe
1st inside
Curb on about
1st inside

Plotted.

Mr. H. above
Shepard St.

Carpenter St.



Ann and Jane Barber

40 Carpenter Street.

John O'Donnell.

D.L.

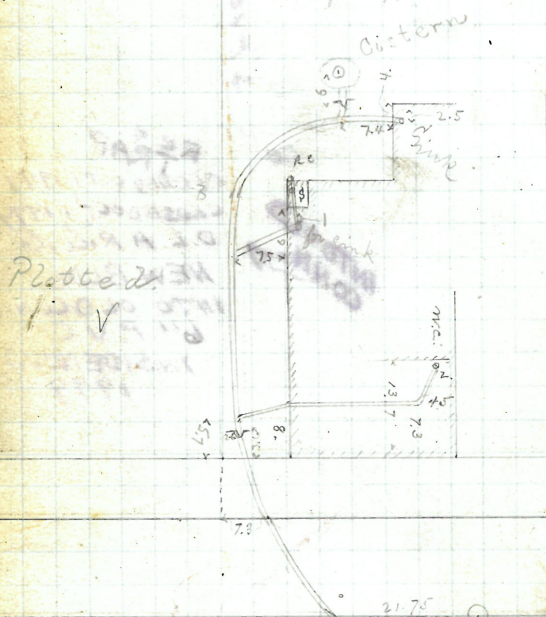
Permit 842

Cut at curb = 8.1

Opened April 9th 1875 } Repaired & closed Dec 27th
 Closed " 16 1875 } to add m.c. - J.A. Blackman
 Repaired " 24 1880 }
 Closed " 24 1880 }

Came up 1 pipe + 2 $\frac{1}{4}$ turns just inside of curb.

Connected with cistern by 4" pipe in order to take overflow



Carpenter Street.

2nd M.H. & Co. Shop

Aaron B. Curry

31, 33 & 35 Carpenter Street

Opened Apr. 12-1895

John O'Donnell

Closed " 17-1875

9. 2.

Reopened & closed Dec. 28 1904 Permit 845

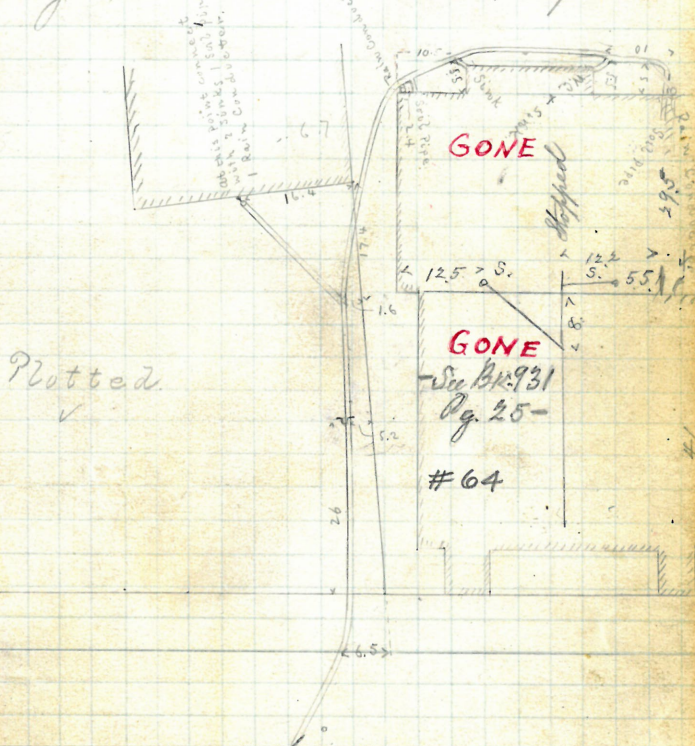
J. Leary S. L. - Cleanout - Cut at curb 9.4

Reopened May 11-1915 Gov. Ex. Work done under

Closed " 19-1911 Permit No. 845-May 3-1918

J. Deary L. L.

See BK No. 93/Pg. No. 25-



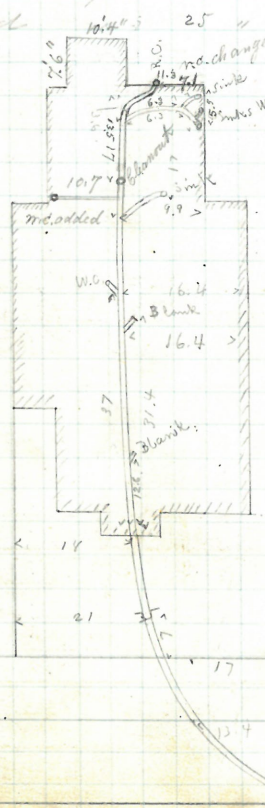
8725 front 1/2 M. H. below ShepardSt, Carpenter Street.

John C. Peggiam
 23 Angell Street
 Thomas Phillips & Co
 D. L.
 Permit No 846
 Cut at Curt 8.8

Opened April 13 1875
 Closed

Reopened Aug 10 94
 Closed Aug 14 94
 J. C. Phillips L. L.
 By Jan 24 / 33
 M. Nally & Co

Angell Court.



Plot to do.
 V

Angell Street,

2nd M. H.
 below Angell
 Court.

REMOVED

✓ 109

Barton
337 Pine Street
George J. J. J.

Permit No. 847
Cut at Curb. 78

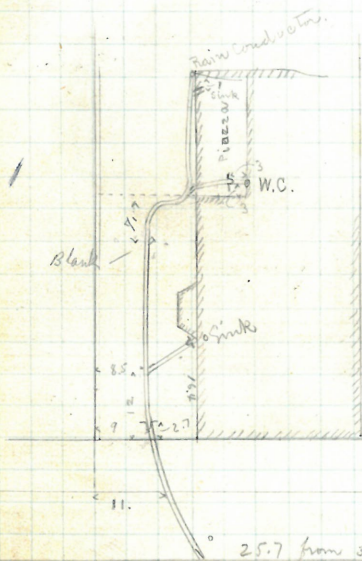
Opened April 20 1875

Closed " 22 "

Opened to Extend May 7-18 77

Closed " 8-18 77

Grain toward & one Blank y put in



Plotted.
✓

25.7 from 3rd M.H. along Pine St.

Pine Street

110

GONE

A. S. Potter & Calvin Stone
E. Corner Stewart & Broad
Solomon Thornton

D. L.
Permit No. 826
Cut at Curt. 9.5

Opened April 14 1875

Closed " 17 "

Reopened April 25-1879 by John W. Briggs to stop and join

Closed " 25-1879

joint in wall
at rear phone

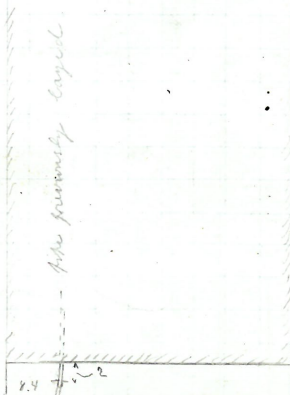
Reopened Dec. 8-1900

Closed " 10-1900

D. Holmes D. L. - Clean out

Plotted.

✓



76.7 from 2nd N. H.
above Sehill St.

Broad Street

Albert Eddy

22-528

189 Pine Street

John O'Donnell

D. L.

Permit No. 849

Cut at curb 7.8

Opened April 15 1875 5" Vit Pipe -

Closed " 17 1875

Reopened & Closed Feb. 15-1905

Wm. Chapman & Son - Relay ~

Reopened Sep. 13-1922 Reopened Dec. 6-1923

Closed " 13-1922 Closed " 6-1923

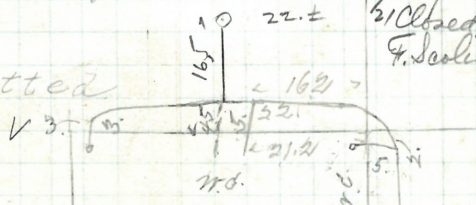
J. M. Bannighatti & Son - J. H. Hoffmann & Son

8 Reopened - 8/21/40

21 Closed - 8/22/40

F. Scotland & Co. C.B.

Plotted



All Inn above

Bldg line

curb

Pine Street

40.2 from 2nd M.H. from Richmond Street

Proposed Eddy Lane bridge
 at old bridge hole
 Wm. Chapman & Son

238

Warruck Lyon

150? Williams Street
Ellery Millard
& L.

D. Holmes

Permit No. 850

Re May 2-1889

Cut at Cost 8

Opened April 15, 1875

Reopened Sept. 28-1904

Closed 23 1875

Closed Oct. 7-1904

W. K. Chadsey & Co.

Revised



Per June 2 1878 6/2/48
Clo June 2 1878 6/2/48
Clo M. R. R. P. L.

Williams Street

Lucy A. Farmham
6 W 2 Bourne Street
John Barnell
D. L.

Permit 851

Cut at curb 7.6

Opened April 15/1875

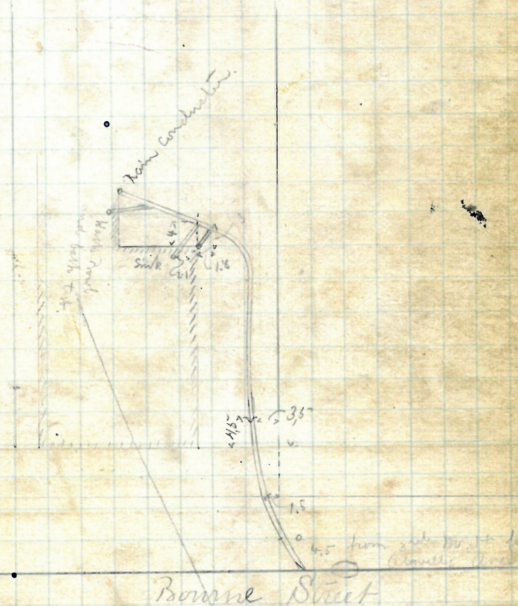
Closed " 22/1875

Reopened Aug 8 - 1878 Thomas Phillips 909 D.L.

Closed " 13 - 1878

Plotted.

V



See next page

S. S. Bradford
 Canal Street
 Wm Andrews & Son
 S. L.

Permit No 853.
 Cut at Curt 6

Opened April 19, 1875
 Closed " 23 1875
 Reopened Feb'y 25 1878
 Closed March 1-1878

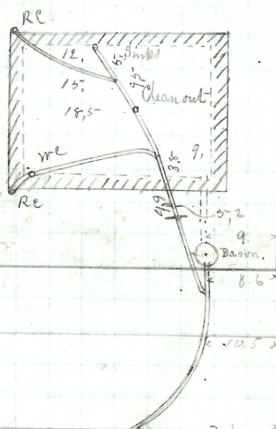
J. A. Blackmar

Reopened Aug 17, 1931
 Closed " 1931
 M. Lyons & Sonnet

Connects with
 Draw formerly
 layed.

Was obliged to
 put in Bend
 connection with
 old sewer
 S. L. S.

Plotted.



Main

Canal Street.

When new sewer was built in 1876 the
 drain was connected with it at 61.0 north of
 2nd W. St. north of Pitman St

Allen P. Young

7 Petrus Strick

Jason A. Blackman

9. L.

Permit 852.

Cut at Curb. 10.2

Opened April 19 1875

Closed " 22 1875

Reopened Aug 31st 99

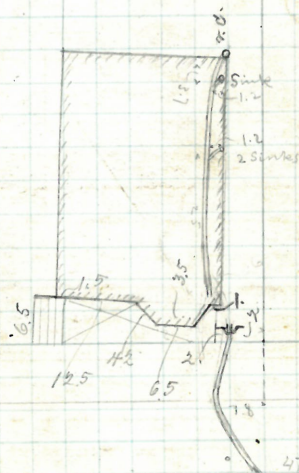
Closed Sept-14 99

Wm Condry D. L. -

cleanout -

Plotted

v



Pettis Street.

47 from 1st year?
on Petalio Str.

should be 86.4

E. P. D. Aug 8 - 1876

U

GONE

City of Providence

Corner of Arnold & Brook

M^m₁₁ Andrews + Son

J. L.

Permit No 854

Cut at Carb 9.4

Opened May 15. 1878

Closed 11/11/19 1875

Redhanded. 1 Oct. 4. 1893

Closed	Oct.	1893
--------	------	------

L. H. Pease D. L.

Reopened Aug 6th 96

Closed " 1011.96

H. R. Chadsey D. D.

Reopened Aug 6 1896

by O. McAuliffe D.D.

Arnold P.

Reopened Apr. 24, 1935
Closed Apr. 24, 1935
W. Lyons - Clear

clean

Proposed July 13-1910 -
 C. Foster 23-1910 -
 J. D. Leonard, Secy -

97.3 from 1st M. H. below Arnold St.

Brook St.

118

Daniel Remington

82 Broadway

John O'Donnell

D. L.

Permit No 855

Cut at Curt. 9.4

Opened April 19 1875

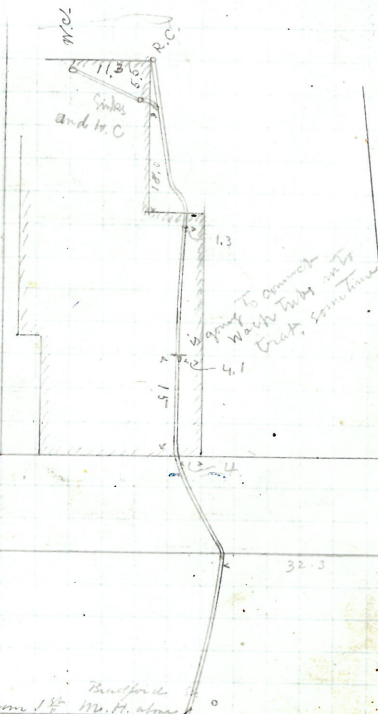
Closed " 23 1875

Reopened + closed Nov. 19/92.
by J.F. Read, to add r.c.

Curve of 1 m.
and 2 m. for
turning first m.
and 2 m.

Plotted.

✓



J. R. Mathewson

71

Bradford St.

John A. Donnell

D. L.

Permit 857

Cut at curb 8.7

Opened April 19 1875

Closed " 22 1875

Reopened Jan'y 21st 98 - J. Deary D. L.

Closed " 22nd 98 - Cleanbut

Reopened Mich 17th 99 - D. Holmes & Co. D. L.

Closed " 21st 99 - Relay

Reopened Aug 7 1933

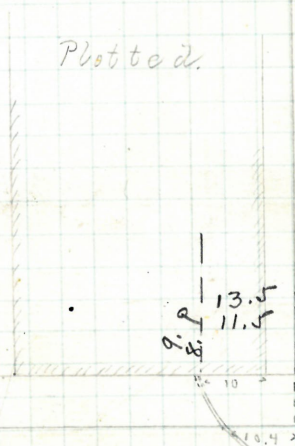
Closed - Aug 8 1933

G. Piccitelli adopted

V

Connects with
drain previously
laid just outside
front line of house

Plot to dr.



Bradford Street.

27 feet wide M.H.
from abutments

Wm. Butler

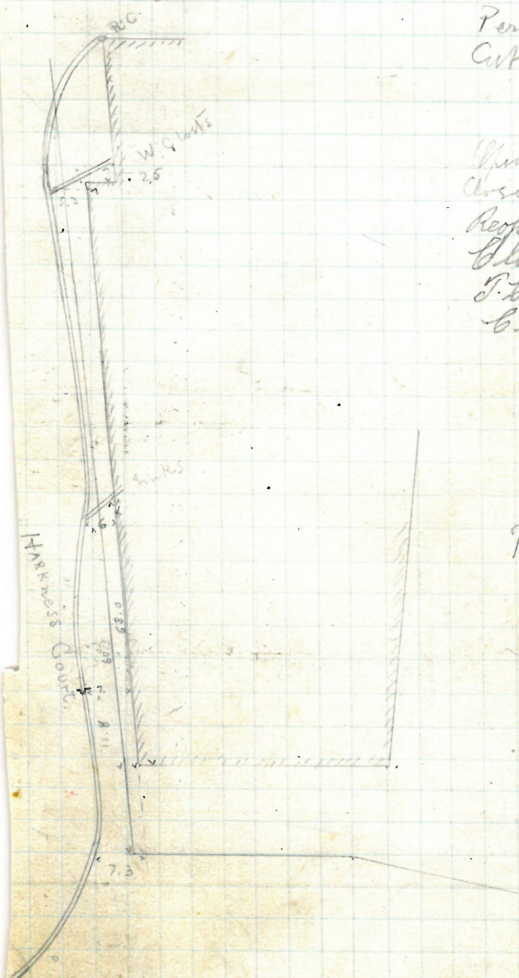
Scar. Harkness Cr. 54 + 58 Weybasset Street

Frank Holden

D. L.

Permit 866

Cut at Curb 7.5



Closed April 20 1875

Closed " 24 1875

Reopened June 29-1909

Closed " 29-1909

J. S. Phillips D. L.

Clearout

Plotted.

✓

0.2 from 1st N. H. below
Harkness Court.

Weybasset Street.

Carrington Hygiene #104-136
 S. Coal Snow + Washington St. A
 Charles E. Luther
 D. L.
 Permit No. 162
 Cut at curb 75

Opened April 22 1875

and 23 1875

Reopened Nov. 23 - 1883 by J F Read D.L.

Reopened Aug 23 1945

Closed Aug 23 1945

lower line 1 ft 8 Conway St

Plotted
 ✓

25 ft from 1st St. for Westward St.

Snow Street.

Come up 1.3 feet pipe + 2 Quarter turns at

126

P-157
19

19

Emily C. Steere

#7 Sheldon St SE Corner 433 Benefit St

Thomas

9. 2

Permit # 867

Cur at Curve 8.5

Open d April 21 1875

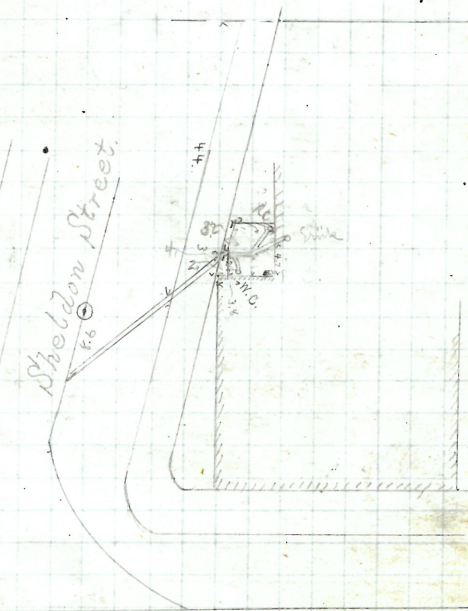
Chas. 27 1876

Reopened Dec 11-1885 by J. F. Read

See Book 578-12

Plotted

✓



Bennet Street.

Charles H. Carroll
25 ~~13~~ Kearney

25

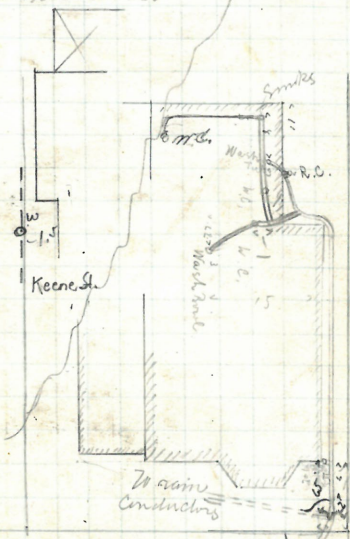
~~13~~ Keene Street
Isaac L. Horton
D. L.

Permit No 1086
Cut^y at cost 8.00

Albion d. July 19 1875
 Chas d. 21 1875
 B. d. 1875

Proposed Jan'y 21-1926
 Shaded " " 1926
 D. A. O'Connell D. L. -

Reopened Aug 15, 1934
Closed Aug 16, 1934
E. C. Reed - 4" I + 4" S Vit



Plotted
V

39.6 West of M. H. 11
3rd m. N. W. of Brown St.

Keene St.

B. N. Lapham

15-19 Matheson Street
new 168-172 Elbury Millard
Woolworth Bldg

Ellery Millard

Permit to 4.65
Cut at Cut 7

Grand April 21 1875

Closed 24/876

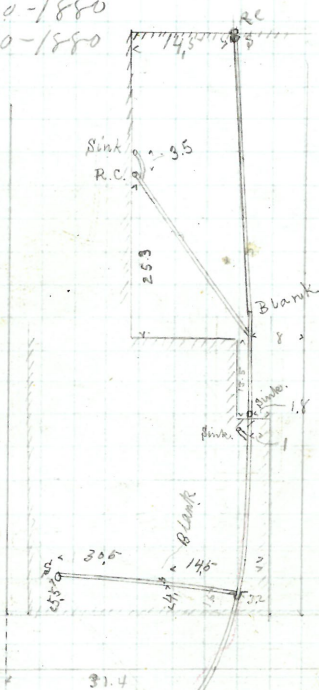
Redondo Oct- 7-1879

6	closed	"	8-1879
---	--------	---	--------

Extended March 30 - 1880

Cloud. " 30-1880

Plotted



112 from M. H. at Westminster Street

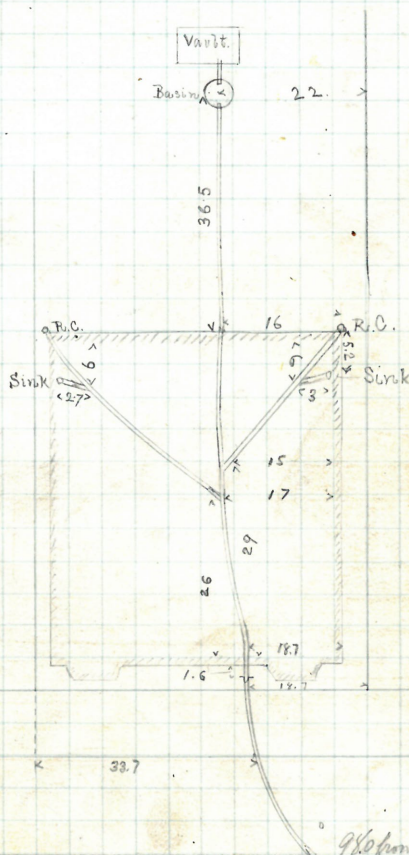
Mathewson Street.

Philip H. Dwyer
 Ives Street near Preston St.
 James P. Millard
 D. L.

Permit No. 464 + 470
 Cost at Cost 7.6

Opened April 23 1875
 Closed " 29 1875

Plotted.



Ives Street.

9th June 1875
 at Preston St.

130

V

L. R. Makepeace
12 Cady Street
Wm. Andrews + Son
D. L.

Permit No 843
Cut at Curb 4.8

Opened April 23 1875
Closed 29 1875

Reopened Nov 30 - 1885 by J. F. Read D. W.

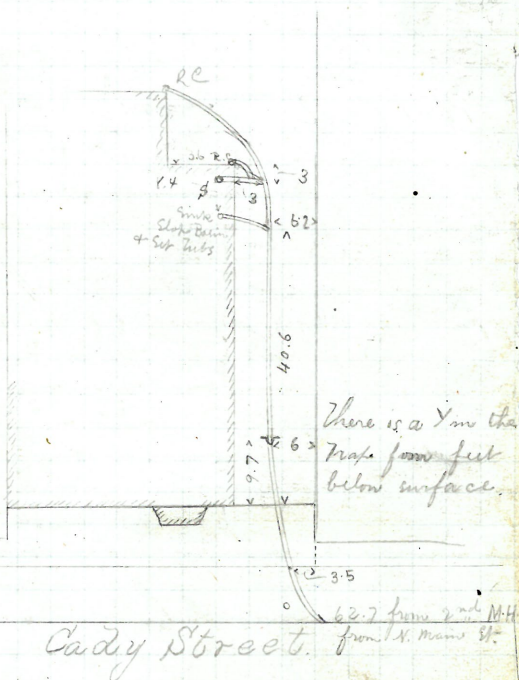
Reopened April 1905 Reopened Dec. 29 - 1920

Closed " 17 - 1905 Closed " 27 - 1920

W. H. Hensley D. L. Clemonout - N. Bonduilli D. L. Clemonout

Plotted.

V



412.6

$\frac{165}{2}$

131

Oliver Johnson

Revised Dec. 26, 1930
Alfred
F. Lee Jr.

80 Broadway
John O'Donnell
D. L.

Permit 872

Cut at Curt. 7.6

Opened April 24 1875 Reopened July 1-1919
Closed " 28 1875 Closed 1919
Reopened May 4-1915 Geo. F. Lewis D. L.
Closed " 1915 Cleanout -

E. E. Hibbons D. L. Cleanout -

For Exp. Work done under

this Permit Mch. 29-1920.

La. Ex. No. 2227 Code 84-

1. Reopened - Nov. 10, 1939

2. Closed - Nov. 10, 1939

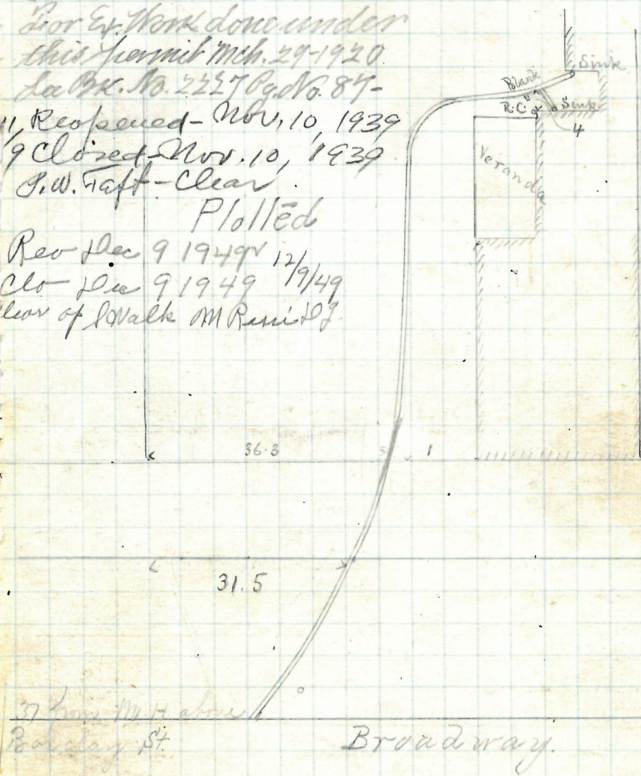
G. W. Taft - Clear

Plotted

Rev. Dec 9 1949 12/49

Clo. Dec 9 1949 12/49

Clear of Lovalk on Permit



E. A. Sammis.
12. 6 Lockwood St.
John E. Luther
D. L.

Permit 863

Cut at - Carl 9.4

Opened April 27 1935 } Reopened - Jan. 13, 1937
Closed " 28 1935 } B Closed - Jan. 13, 1937
" " " " } E. Sammis - Clear

Reopened Apr 3/30.

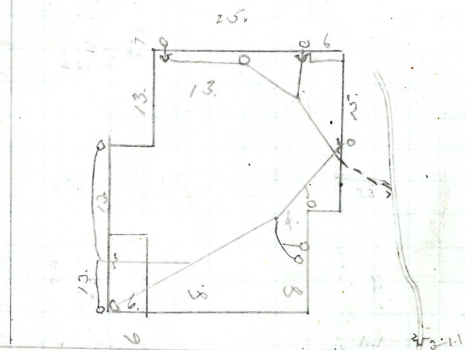
Closed

7/1

A. Hawlee D.

Plotted.

V



Lockwood Street.

2nd N.H. from Hospital St.

134^v

GONE

Charles K. Richmond

#8 X Carpenter St.

Thomas Phillips & Co

B. L.

Permit 873.

Cut at Crab 8

Opened April 27 1875

Closed " 29 1875

Reopened Aug 4 - 1875 by J. B. Horton

Closed " 5 - 1875

Reopened May 4 - 1882

Closed " 6 - 1882

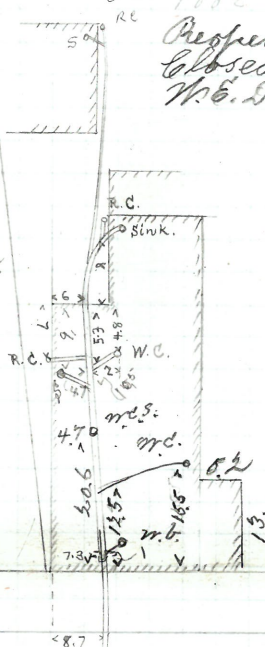
Reopened Nov. 17-1911

Closed " 22-1911

W. E. Davenport D. L.

Plotted

V



13.4
m.h. at Jackson Street. Carpenter Street.

Heirs of Stephen Horton J. R. Brown administrator
129 Elm Street

J. R. Brown

& L.

Permit 86.8

Cut at Carb. 8.9

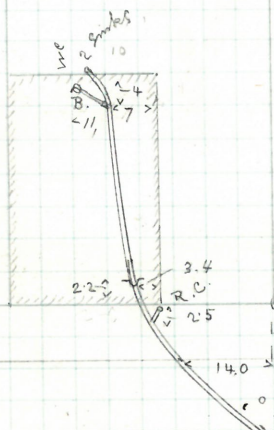
Opened May 20 1875

Closed May 22 1875

Reopened Aug 6 - 1884 by J. W. Briggs Jr

Plotted

V



Elm St.

James Gilham
155. Richmond St.
John Edrill
D.D.

Permit No 475.
Cut at Curb 7.3

Opened April 27. 1875

Closed " 29 1875

Reopened With 9" 98

Closed " 10" 98

J. J. Chanley D. D.

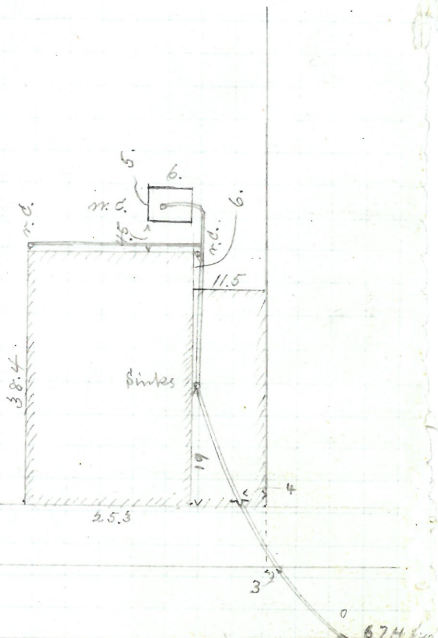
Reopened April 1-1924

Closed " 5-1924

M. H. Adams D. D.

Plotted.

V



Richmond Street.

67.4 feet
M. H. Adams D. D.

H. L. Kendall

286 Bennefit Street

Frank Holden

D. L.

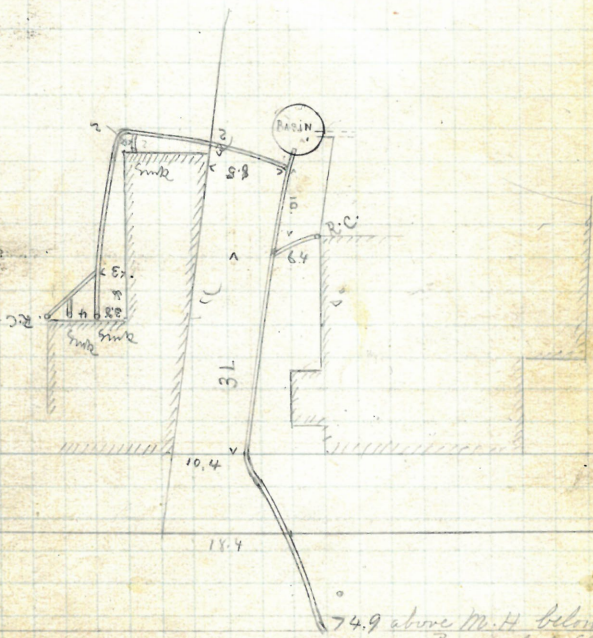
Permit No 878

Cut at Curb 16

Opened April 1 1875
 Closed May 3 1875

Plotted

V



Bennefit Street.

74.9 above M. H. below
 Bennefit St.

140 ✓

Henry P. + Annie A. Tillingham

155 Transit St.

Thomas B. Ross

D. L.

Permit #77

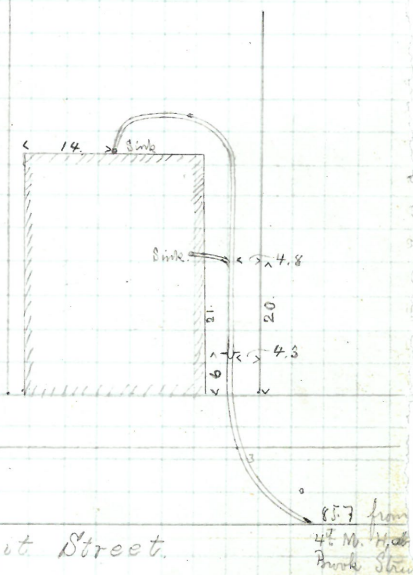
Cut at Curve 8.

Opened April 28 1875

Closed " 30 1875

Plotted,

V



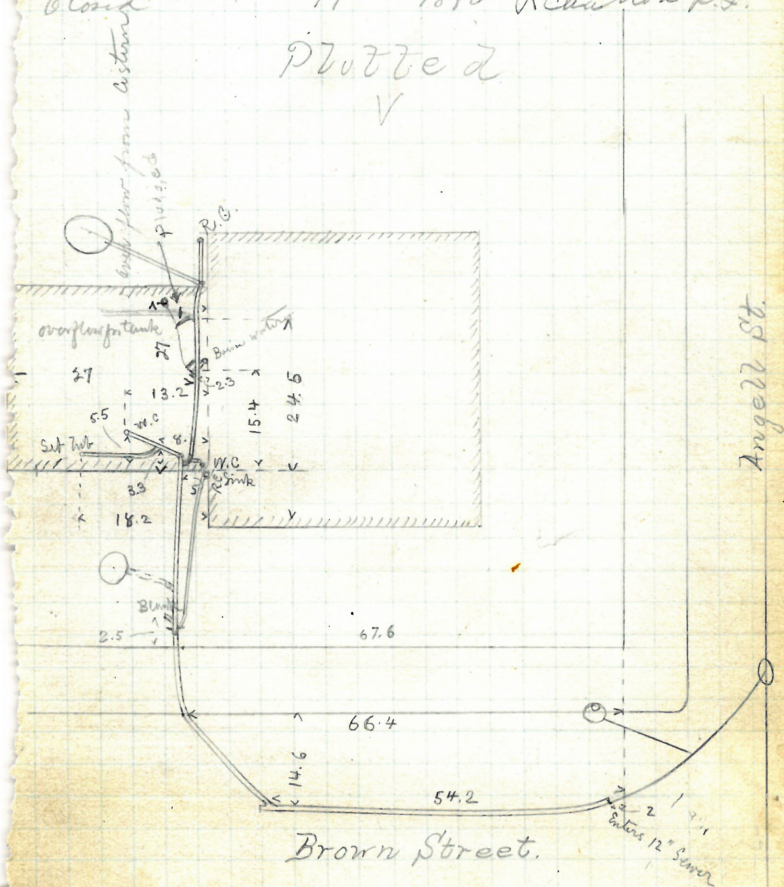
141

to June 30 1947 6/1/47 46 Angell Street.
to June 30 1947 6/2/47 Thomas Phillips & Co
J. L.
J. L.

Permit No 879
Curt at Curt.

Upomed April 28 1875. Reopened Mar 27 1945
 Closed May 11 1875 Closed Mar 29 1945
 Reopened Aug 15 - 1880 add 2 bell 1 inch
 Closed " - 19 - 1880 R Chantrow D.L.

Platte 2
V



142

George C. Arnold
 N.W. Cor. Carpenter & Dean St.
 Alfred Muddell
 D. L.

Permit No 174

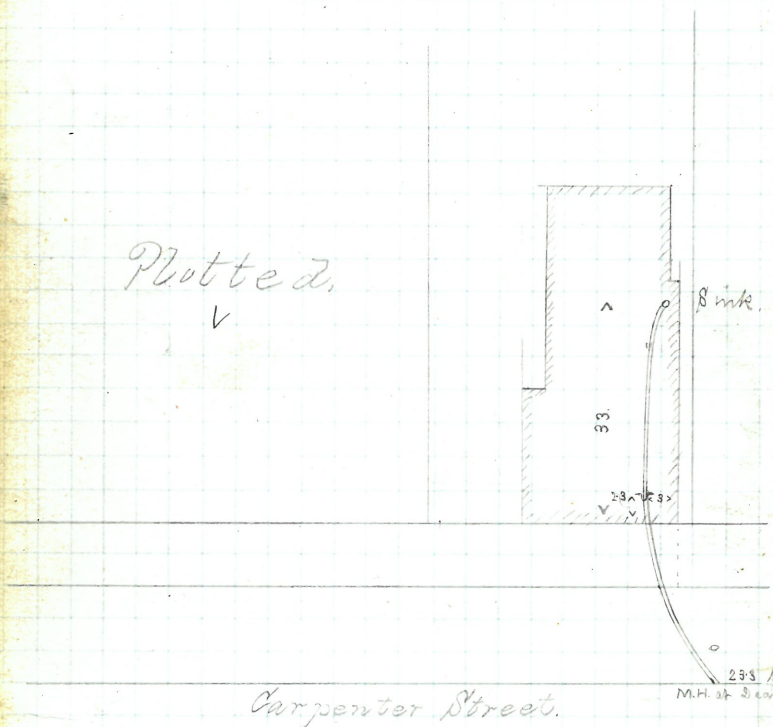
Cut at curb, 9.0

Opened April 28, 1875

Closed " 30, 1875

Plotted.

✓



Carpenter Street.

J. V. Peckham.

Read Street.

James C. Peck
D. L.

Extension of Permit No 141 b
Cut at Grid -

Opened April 29 1875.
Closed " 30 1875.

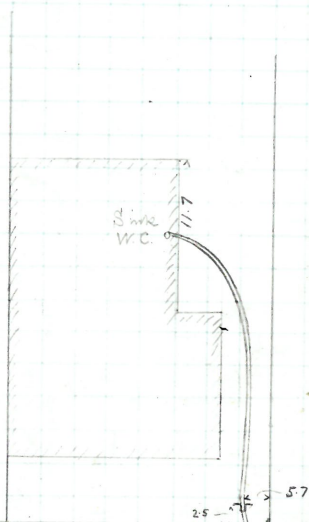
The sketch of this connection is shown
on Page 14 of this Book.

144

George H. D.
S.E. cor Arnold St. 81 Hope Street
Alphons Madbury
S. L.
Cost of work 9.3
Permit 550

Opened Feb. 30 1875 ✓
Closed May 4 1875

Plotted.
✓



Hope Street.

31 from 2nd St. H.
North of Intersection St.

145

$$\begin{array}{r} 162 \\ 0 \end{array}$$

Henry J. Root
Middlebury
John C. Donnell

92

Permit 10884

Cut of Carb 8

Opened April 20 1875
 Closed May 4 1875

Plitted ✓



Middle Street.

429 from 2nd M.H. from
Dorrance Street.

146

City of Providence
School House Walling St
April 1871

Permit No 882
Curb 9.9

Opened May 1 1875
Closed " 3 1875

Work done under this Permit June 30 1875

See Book 513 Page 32

Reopened Aug 25 1914

Closed " 4 1914

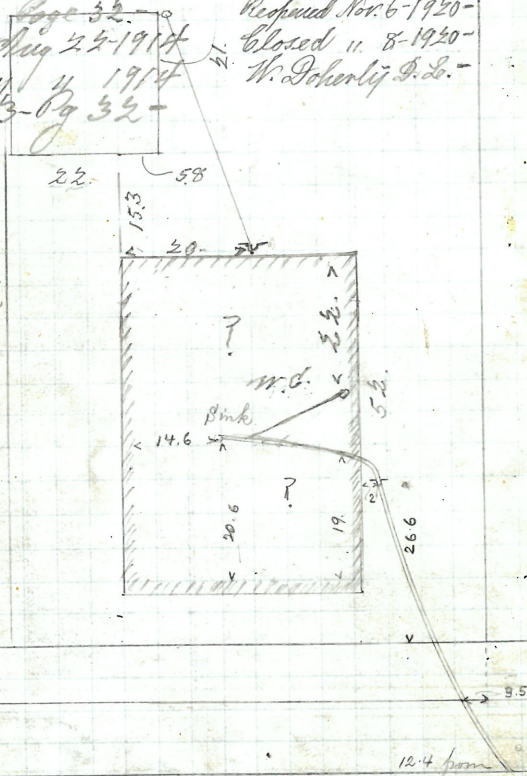
See Book 513 Page 32

Reopened Nov 6 1920

Closed " 8 1920

W. Scherly S. L.

Plotted
V

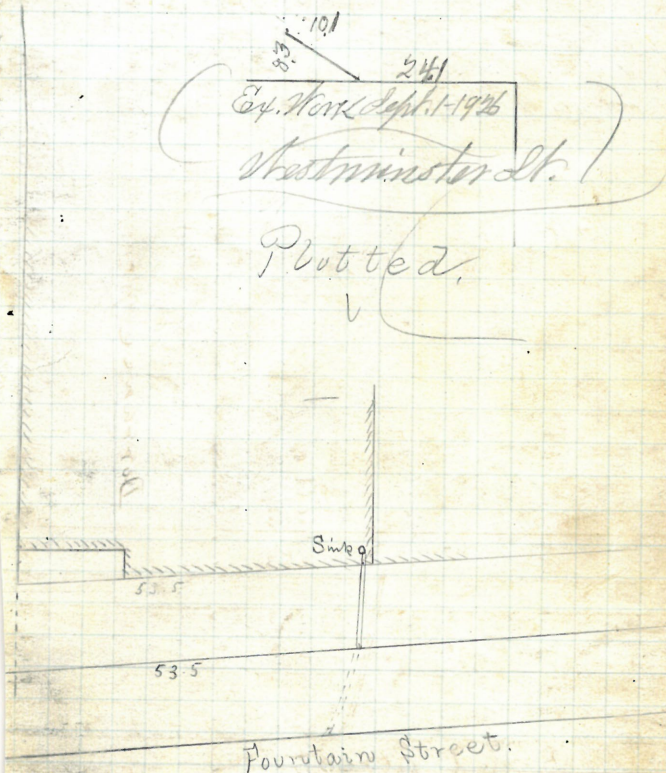


Walling Street.

5' 10.4 from West Run

House on S.W. Corner Fountain and Westminster.
 Relayed old drain put in in 1872.
 Taken up and relayed from curb to sink
 shown in sketch.

Cut at Curb 53.5
 Opened April 29, 1875 Resurveyed Sept. 1-1926
 Closed " 30 1875 Closed " 1-1926
 C. P. Wood, Jr. -



148

2639 Aug

Wm. H. Cor. Broad + Dorance
John A. Donnell
D. L.

Permit No 639
Cut at curb 6.00

Opened May 3, 1875

Closed " 5 1875

Nov 26 - 1882

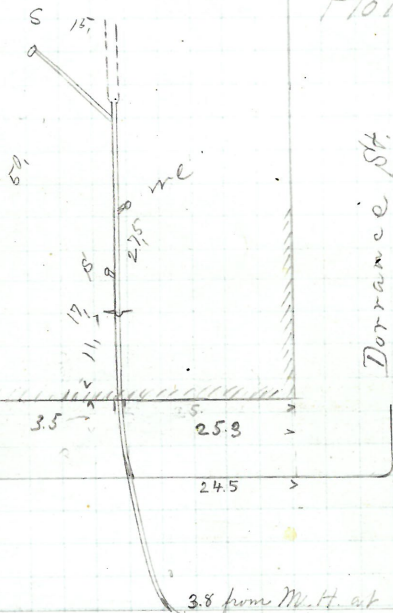
Dec 7 - 1882 497 Read 92

Reopened Aug. 4 - 1915 -

Closed " 7 - 1915 -

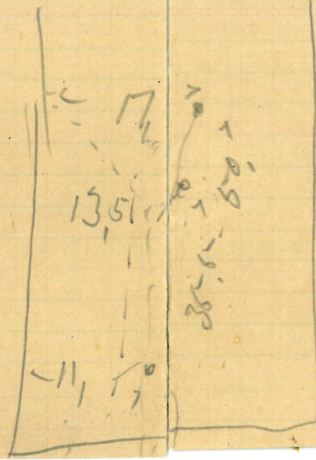
J. P. Birney D. de. -

Plotted



Broad Street

4-1915-
 Henry C. Hidden Est-
 111 Weybosset- 5/-
 Jimmy D.
 Profed A. 4-1915-
 Blood 10 7-1915-



153
 148V

GONE

149

Edmund Jarvis.

Spined May 3 1875 High Street near Fenner.

Spined Sept 24 1875

David W. Barney

Spined Oct 4 1875

D. L.

Spined " 7-1878

Spined " 15-1878

Spined " 29-1878

Spined July 23

Spined " 24/30

Spined " 24/30

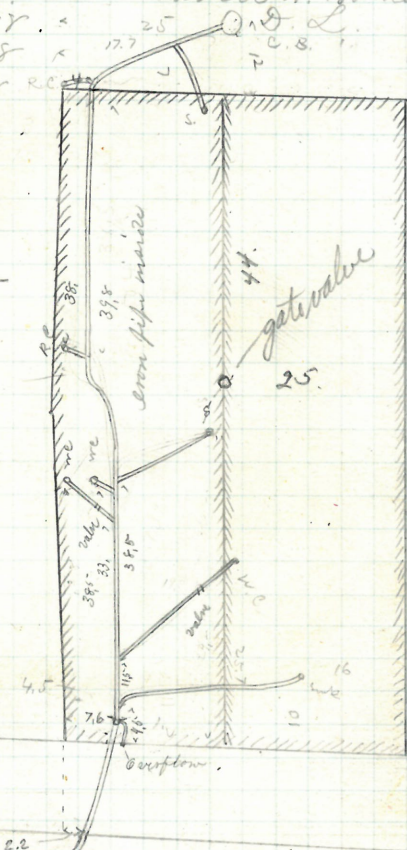
Spined " 24/30

Spined " 24/30

Spined " 24/30

Plotted.

✓



136.9 above M. H. at Fenner St.
High St.

150

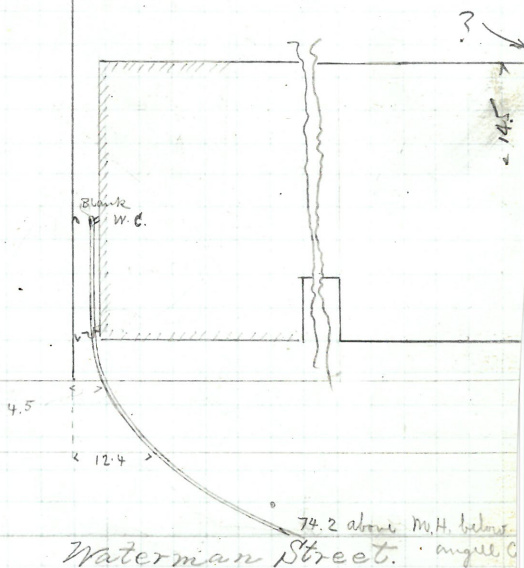
P-157
11

Wm M. Bailey, Trustee
#55 Waterman Street.
Wm M. Holloway
D. L.
Permit 886
Curb at Curb 9.

Opened May 3, 1875
Closed " 7, 1875
6, Reopened - June 25, 1941
65 Closed - June 25, 1941
R. Keyes - add w.c.
8, Reopened - Aug 7, 1942
7 Closed - Aug 7, 1942
P.W. Taft - Clear
Roots - opened sidewalk.

Plotted.

V



152^v

Harriet Coleman
87 Williams St.
Josiah Summards
D. L.

Cost at Curb 7.0
Permit 10 193 6

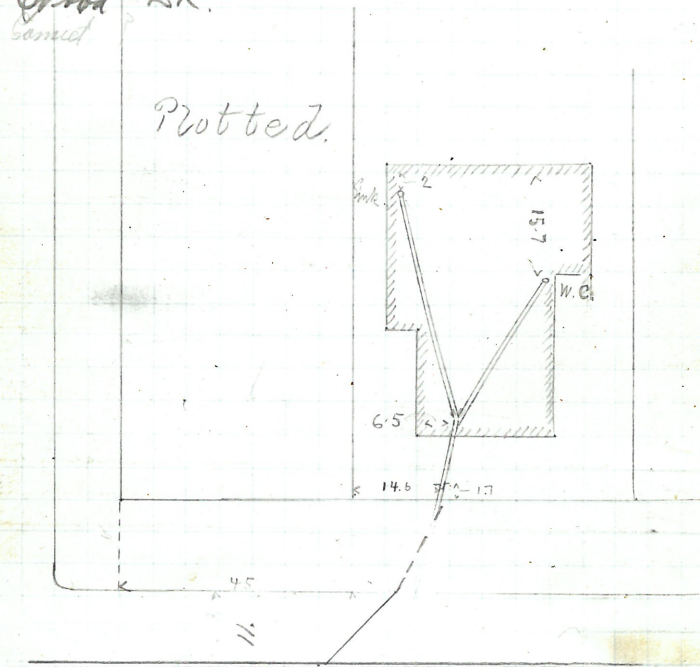
Opened May 5 1875
Closed " 11 1875.

Proposed July 29, 1929
Closed July 30, 1929
A. L. Shedd L.R.
See Permit

Platted

Brook Street

Plotted



Williams Street.

Enters sewer 25.70 West of 1st map
Brook St

Brig. H. Salisbury
98 John Street.
Abel W. Tripp
D.L.

Permit No 890

Cut at Curb 8.25

Opened May 4 1875
Closed " 7 1875

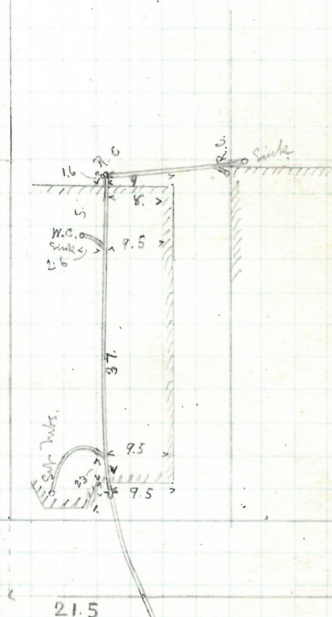
Reopened 11/21/55

Closed 11/21/55

D.L. F. Lessard Clear.

Plotted.

V



Removed

155

B. V. Peck

60 Crany Street

James D. 7. Cudworth

D. L
Permit No. 91

Cut at Cut. 98

Opened May 4 1875.

Closed 11 1875.

Re-opened July 8 1946 $\frac{7}{8}$

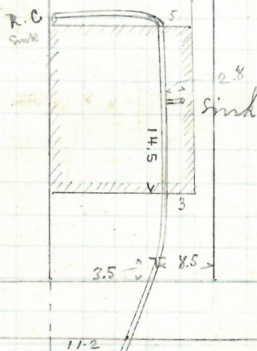
Closed July 8 1946 $\frac{1}{4}$

Clear Did not off walk

H. A. Rouse & L.

Plotted

V



Crany Street

28.1 above 3rd N.H.
from Edley St.

156

Removed

Benjamin T. Peck

181 Friendship St.

James C. Peck

D. L.

Permit No 889

Cut at Curb 10

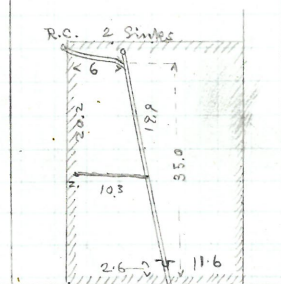
Opened May 5 1875

Closed " 7 1875

Reopened + closed Mch 8/93; Broadway L.

Plotted

V



16

above 3 mol.

50.3 M.H.

below Christie St.

Friendship St.

Baron Town

18 Snow Street S. Con Chapel

P. Strick Smith

S. L.

Permit No 896

Cut at curb 8.6

Opened May 5 1875

Closed " 7 1875 J. Brady

Reopened Dec 17-1878

Closed " 20 1878

Reopened April 21 1879 Wm. F. French

Closed " 23 1879

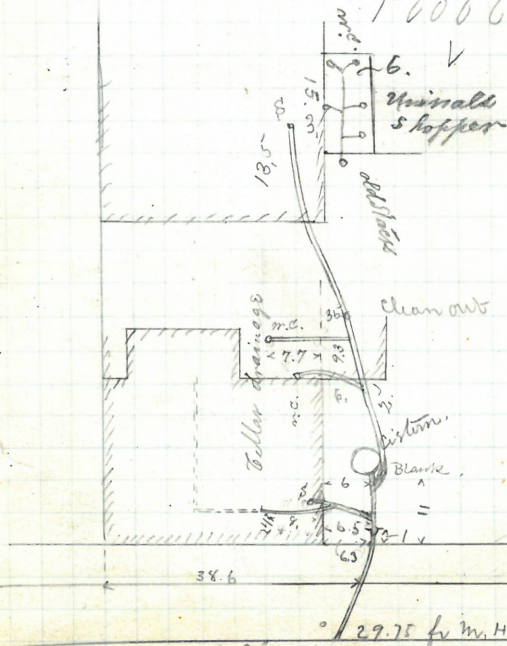
Reopened Oct. 27-1911

Reopened & Closed May 22 1899 Closed " 28-1911

J. A. Cligh D. B. F.

J. C. Dunn D. B. F.

Plotted



For City of St. Louis
 this permit for 1914
 See also No. 445 City No. 68-

29.75 ft in H. at Snow St
 Chapel Street,

158

W. J. Crocker
204 Pine Street
Patrick Smith
D. L.

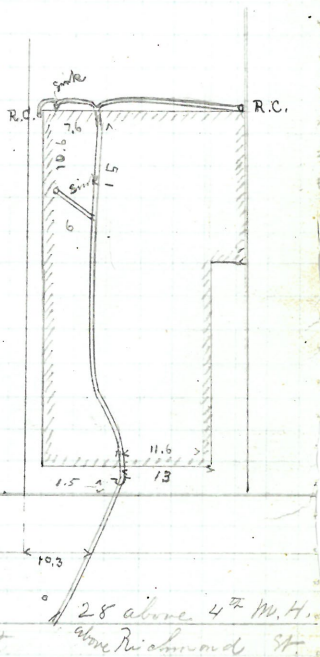
Permit No 897
Cut at Cut 8.6

Opened May 5 1875
Closed May 8 1875

Reopened May 29 93
Closed May 29 98 J. A. & W. D. L.
Reopened Aug 24 1910
Closed May 24 1910
J. Deary D. L. - blanket

Plotted.

✓



Location was given in book, 26 feet.

Removed

✓
159

~~Samuel~~ Remington
#90 44 Broadway
John C. Smith
D. L.

by Phillips Es. - Oct 9 - 1882 Permit in 898

" 13-1882 Cnt^v at Curb. 9.3

Opened May 5 1875

Cloud at 7 1875

Reopened Sept 24 - 1878

Florida: " 2 - 1878

Reopened Oct 18 - 1878

Cloned " 12 = 1874

Reopened June 1-1921

Closed 11 2-1921

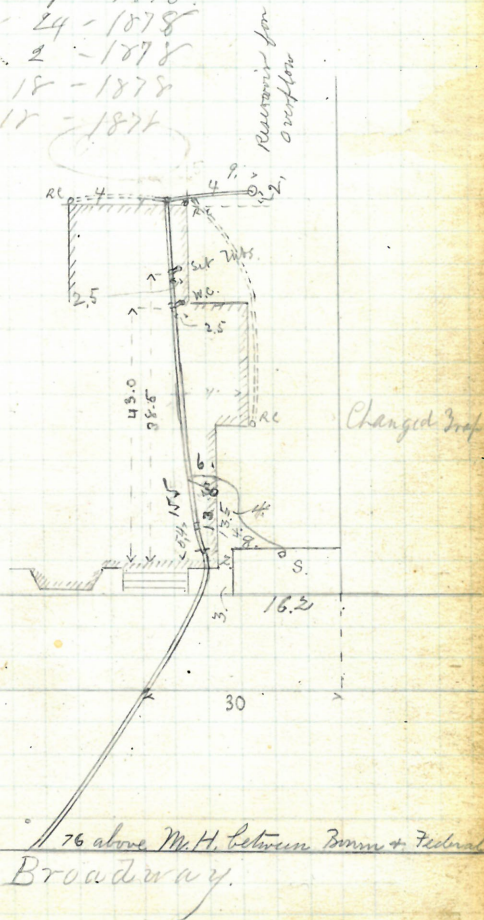
D. Mondillo J. L. -

Plotted

Rep-Mar 1. 1933

Q. Mar. 2 1933

J. Cifelli D.S.



REMOVED

161

George F. Martin

271 Pine Street

Joshua R. Brown

D. L.

Permit No 894

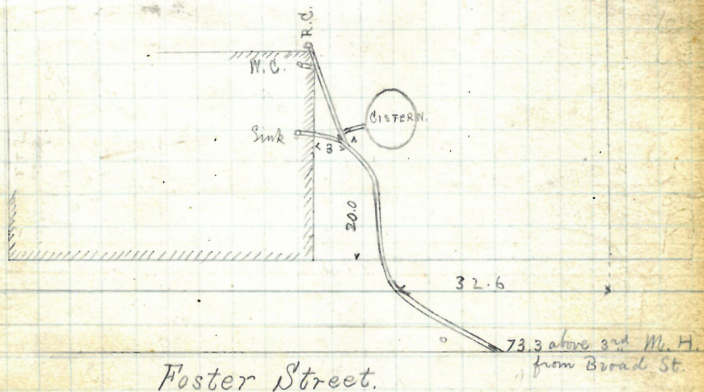
Cost at curb 10.0

Opened May 6 1875.

Closed " 8 1875.

Plotted,
V

Pine Street.



Mathewson & Allen
 Mitchell Street
 John C. Donnell
 T. L.

Permit No 892
 Cut at curb 7.6
 7.5

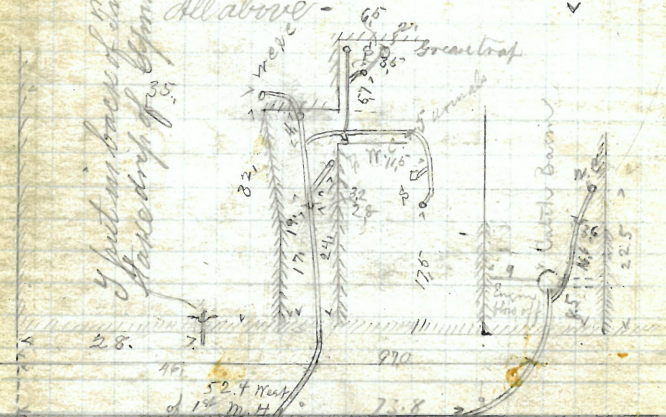
Opened July 20 1875
 Closed July 23 1875
 Opened to Extend August 30th 1875
 Closed August 31st 1875
 Opened to Extend July 24th 1876
 Closed July 25th 1876
 Reopened July 9-1878 by F. Reed
 Closed " 9-1879
 Reopen Apr 30-1887
 Reopened & closed Feb 2-1903
 R. G. Leese D. L. &

Reopened Oct 2-1925
 Closed 11. 3-1925
 R. G. Leese D. L.
 All above -

Plotted

Dorrence St

4 put on back of map to
 show drop of 3.5



Middle Street. Nat of M. H. at Dorrence

Reopened May 19-1925
 Closed 11 1st 1925
 R. H. Allison D. L.
 Replace 4614 471 5

Ex. 899

Oct. 20. /36

Hins J. Wm Wilkinson.

Lindley St.

opened } Oct 24/36.
closed }

J. Reaney

Disconnect. Drainat. Tap.

Note: - Drain disconnected N. E. L. Co.
transformer vault being built in street
reconnected to above M. H. see original.

