



RHODE ISLAND

DEPARTMENT OF ENVIRONMENTAL MANAGEMENT

235 Promenade Street, Providence, RI 02908-5767

TDD 401-222-4462

November 12, 2002

Dear Public Officials, Conservation Agencies, Land Trusts, Watershed Councils, Interested Parties:

I am very pleased to forward the Department of Environmental Management's State Land Conservation Report for Fiscal Year 2002. This report documents a record breaking year for land conservation in Rhode Island. As you will see in the report, the tremendous support and hard work of many public officials, conservation agencies, and dedicated volunteer land trusts has resulted in the preservation of many of the State's important natural resources.

With the preservation of over 6500 acres of land last year by all conservation interests in the State, we have far exceeded expectations set forth by the Governor and the State Greenways Plan. From the creation of a new management area with the State's acquisition of the 412 acre Eight Rod Farm Management Area in Tiverton and Little Compton to the protection of the 20 acre Wayposet Preserve along the Kickemuit River by the Town of Bristol, coastal marshes, farms, forested lands, and scenic vistas are being protected for the enjoyment by all and the long term preservation of our natural resources.

A variety of funding sources and partnerships have enabled the Department to leverage State bond funds to stretch conservation dollars across Rhode Island. Along with the passage of the State's \$34 million Open Space and Recreation Bond Issue in November of 2000, eleven communities passed local bond issues totaling an additional \$17 million for open space preservation. Other communities passed Town Charter amendments dedicating funds to open space protection and many have dedicated their real estate conveyance tax funds to open space preservation through Town Council resolutions. This past year, we have begun to see the mark that these local funds can have on land preservation. These municipalities have recognized the importance of protecting their special places and they are willing to pay for it.

This past fiscal year has seen more land conservation activity than any preceding year on record in both the number of projects and the acres protected. We anticipate conservation efforts to continue at this aggressive pace given the momentum created over the past year, the dedication of municipalities and land trusts throughout the State and the recognition that there is not much time left to protect all the natural resources that are so important to making this State a special place. We look forward to your support of land protection activities and your assistance facing the challenges that lie ahead.

IN CITY COUNCIL
DEC 19 2002

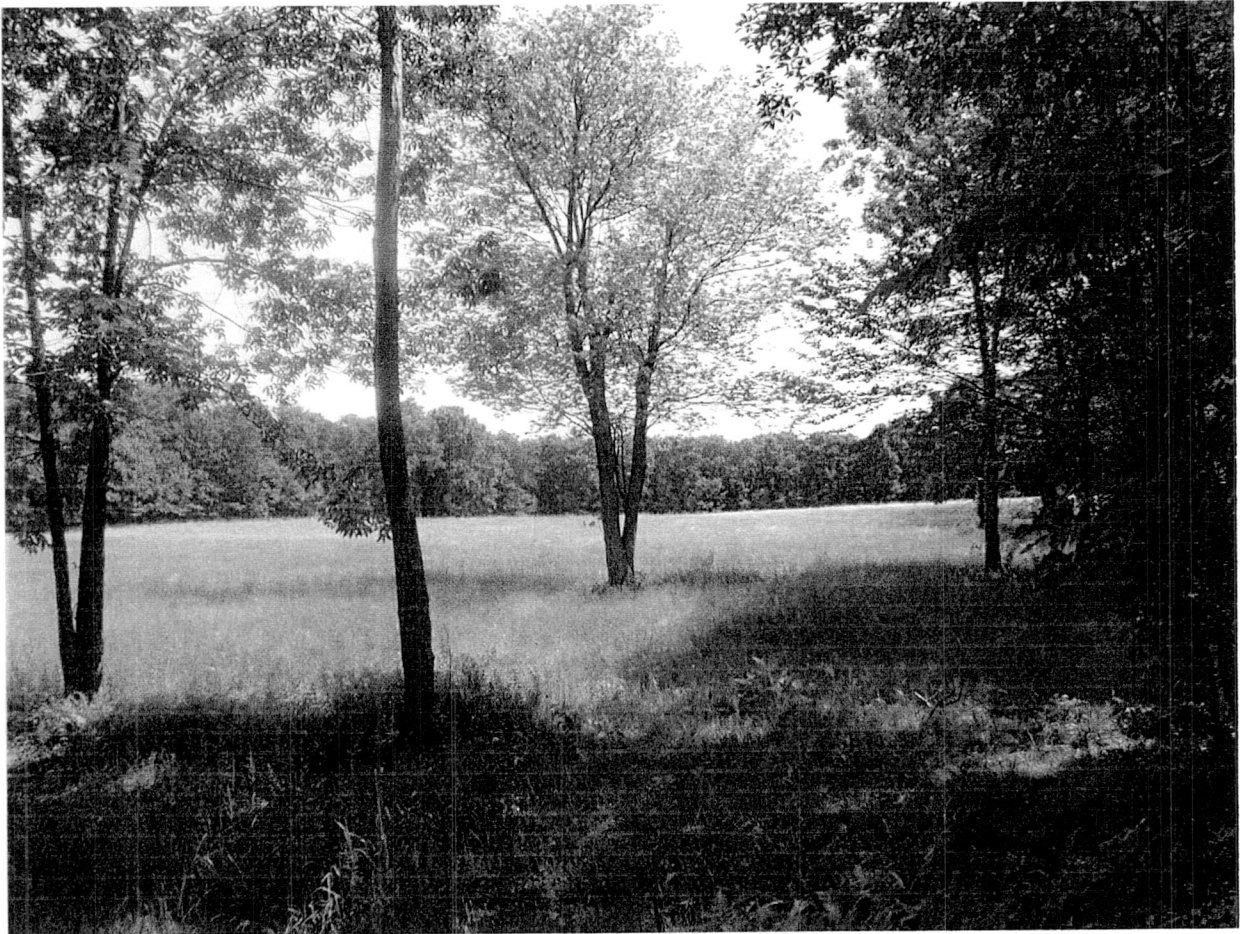
READ
WHEREUPON IT IS ORDERED THAT
THE SAME BE RECORDED.

Sincerely,

Jan H. Reitsma
Director

Land Conservation in Rhode Island

Fiscal Year 2002



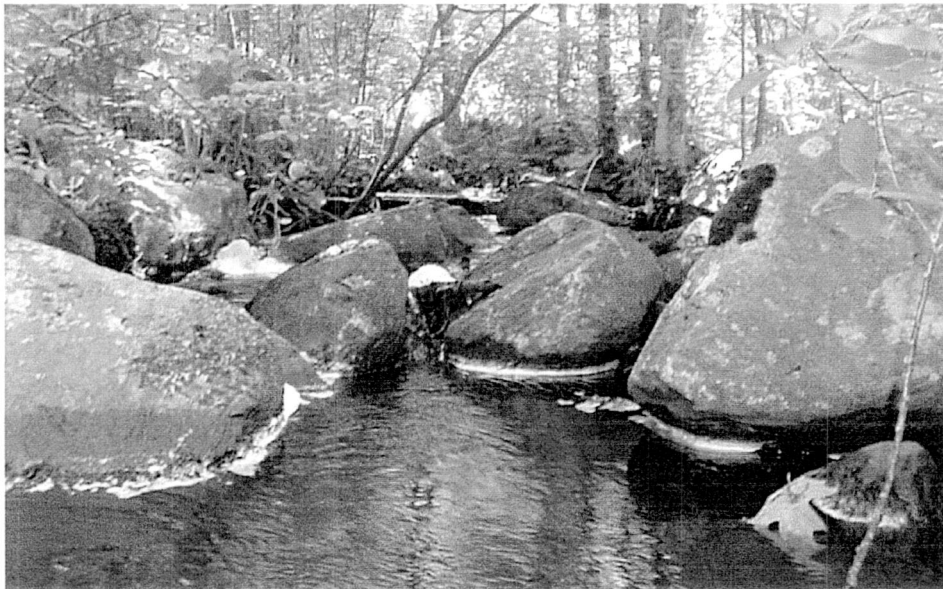
A.P.L. Realty, Inc. Property, Exeter/Hopkinton, Arcadia

Department of Environmental Management
Jan H. Reitsma, Director
October 2, 2002

Land Acquisition & Conservation Program *Fiscal Year 2002 Report*

The Rhode Island Department of Environmental Management, in partnership with statewide conservation interests, is very pleased to report a new record for the number of acres of land preserved in a Fiscal Year- a total of 6537 acres.

Of this record number, the State's Open Space Program and the Local Grants Program protected 2593 and another 236 acres were protected by the State Agricultural Land Preservation Commission through its purchase of development rights program. Local Land Trusts continued their impressive work by conserving 1856 acres using local funds, donations and funds from other conservation agencies. The Nature Conservancy, which was a partner in many of the State and land trusts projects, also protected 1411 acres exclusive of the acres noted above. The Audubon Society of Rhode Island was the recipient of 441 acres of donated land in the last fiscal year.



Land Conservation in Rhode Island this past fiscal year has far exceeded program goals and expectations set by the Department. The level of activity and the quality of projects continues to increase as we become more aware of the importance of protecting our shorelines, farm fields, forest lands, scenic vistas, natural habitats, and water supplies. The following chart shows the breakdown of acres by group. Please note that although acreages may be attributed to a specific group, most of these projects involved more than one entity working together to accomplish a project.

PROTECTED LANDS

LOCAL LAND TRUSTS	1856 acres
NON-PROFIT ORGANIZATIONS	1852 acres
RIDEM	2593 acres
FARMLAND (ALPC)	236 acres
TOTAL ACREAGE	6537 acres

FUNDING and LEVERAGING

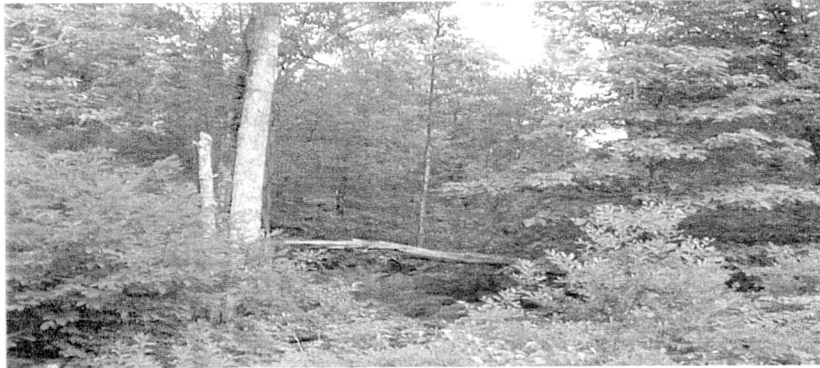
Funding of land acquisition in Rhode Island continues to rely on partnerships and leveraging. State bond funds play a major role in the funding of RIDEM land projects and the Agricultural Land Preservation Program; however, both of these programs have had great success in attracting foundation funds and non-profit support. The Nature Conservancy, through grants from The Champlin Foundations and the Doris Duke Charitable Trust contribute significant funding towards State land protection projects. In addition, over \$2 million in federal funds from the USDA's Farmland Protection Program, the U.S. Forest Service's Forest Legacy Program, and the U.S. Fish and Wildlife Service's North American Wetlands Conservation Program were used in this past fiscal year's acquisition projects. Expenditures of State funds were higher this past year due to the acquisition of a few large land parcels, including the Hopkinton Associates, Inc. property which added 180 acres to Arcadia and the Eight Rod Farm Management Area which created a new Fish and Wildlife Management Area consisting of over 400 acres. State dollars were matched at just over a 1:1 ratio, not including those projects of which the State was not a partner. Municipalities and land trusts were responsible for contributing millions of dollars towards land protection this past year, utilizing funds from local bond issues, capital campaigns, and documentary stamp fees which were designated for land protection in many communities around the State.

PARTNERSHIPS

Partnerships and the role of land trusts in open space conservation in Rhode Island remains strong. With expert technical assistance from The Nature Conservancy and funding assistance from varied sources, land trusts have become increasingly adept at packaging land transactions, securing open space funds from public and private sources, and winning support from local officials. The Nature Conservancy, with grants from The Rhode Island Foundation, The Land Trust Alliance, and the Doris Duke Charitable Foundation, will continue to provide technical support to local land trusts in Rhode Island.

PROJECT HIGHLIGHTS – FISCAL YEAR 2002

Cate/Taber/O'Reilly – These three contiguous parcels are located in the Towns of Gloucester and Foster. Its combined acreage of 345 acres, almost doubled the size of the State's Killingly Management Area. The parcels include a ready-made trail as well as old stone walls, open fields, and a spectacular canopy of eastern hemlock.



Cate/Taber/O'Reilly, Gloucester/Foster

Eight Rod Farm Management Area – This newly created management area, located in the Towns of Tiverton and Little Compton, will provide for varied uses including fishing, hunting, hiking, and farming. The 412 acre property was acquired with funds from The Nature Conservancy, The Champlin Foundations, State Open Space Bonds, and a \$1 million grant from the U.S. Fish and Wildlife Service's North American Wetlands Conservation Act.



Eight Rd. Farm Mngmt. Area, Tiverton/Little Compton

Kenyon Farm – This 172 acre farm in South Kingstown, was protected through cooperative efforts of the State Local Open Space Program, the Agricultural Land Conservation Program, the South Kingstown Land Trust, and the Town of South Kingstown. The land is a combination of forested land and farmland - primarily hay crop and pasture.

Sabetta, West Warwick – This 34.3 acre forest is interspersed with low density housing. Greenbush Elementary School is located directly across the street, and it is foreseen that a small environmental education program will be incorporated, using the parcel as an “outdoor classroom.” There are walking trails through the site and benches will be added as well.

Waypoyset Preserve, Bristol – This preserve will be home to 7,000 feet of trails with a boardwalk along the Kickemuit River which will connect residential areas north, south and east, to the shore and other green areas. The trails will include interpretive signs highlighting the ecology and history of the area. Users of the trails will be educated about wetland benefits, Native American camp sites, and archeological dig sites.

ACHIEVING LAND CONSERVATION GOALS

In November of 1994, the State Greenways Plan (State Guide Plan, Element 155) determined that 17,850 acres of land should be preserved through State programs over the next 25 years. According to the Plan, an additional 17,850 acres should be protected through other federal, local and private acquisition programs and via creative development. In the year 2000, the Governor, with the support of the Legislature, proposed a \$34 million Open Space and Recreation Bond Issue to support the implementation of the Greenways Plan and to step up the pace of land preservation to accomplish the Plan in a ten year time frame. An overwhelming 73% of the voters approved this expenditure. In addition, eleven municipalities passed their own local bond issues to support open space preservation; adding another \$17 million of funds available for land protection. The Department has been tracking the progress of its acquisition program and of its ability to meet the goals set forth in the Greenways Plan. Since 1994, the Department has acquired over 8700 acres of land, representing 48.8% of the total acreage goal for State conservation from the Plan.

FUTURE OF CONSERVATION

Land conservation efforts are expected to remain strong throughout the next fiscal year. The Department's State Land Acquisition Program currently has 1250 acres under contract for purchase and another 2000 acres in potential acquisitions. The Department has also received 43 applications for its Open Space Matching Grants Program and will award approximately \$4 million towards these open space projects later this calendar year. The Nature Conservancy, local land trusts and municipalities will continue their great efforts to protect open space and conservation areas in the State; although funding for land conservation will be more competitive. A new effort to gain support for open space bond funds is likely to begin over this next year since the State's existing bond authority is nearing an end.

This report was prepared by Lisa Primiano, Supervisor, Land Conservation Program, Division of Planning and Development, under the direction of the Rhode Island Department of Environmental Management, Land Acquisition Committee.

Land Acquisition Committee Members:

Jan H. Reitsma, Director

Frederick J. Vincent, Associate Director, Bureau of Policy and Administration, Committee Chairman

Malcolm Grant, Associate Director, Bureau of Natural Resources

Robert W. Sutton, Chief, Office of Planning and Development

Larry Mouradjian, Chief, Division of Parks and Recreation

Kenneth Ayars, Chief, Division of Agriculture

Thomas Dupree, Division of Forest Environment

John O'Brien, Deputy Chief, Division of Fish and Wildlife

Committee staff:

Lisa Primiano, Supervisor, Land Conservation & Acquisition Program

Paul Ricard, Principal Wildlife Biologist, Division of Forest Environment

Department of Environmental Management Land Acquisition Report

Total Acres
This Report:
2,829.19

Total Appraised Value:
\$17,125,627.00

Acquisition Type	Project ID	DEM AREA	PROPERTY	DEM Division	Date Acquired	City/Town	Acres	Appraised Value
2002								
Agricultural Development Rights			Silver Farm	Agricultural Land Preservation	06/19/2002	Westerly	70.4	\$640,000.00
Conservation Easement			Narrow River LT/Stoddard	Fish & Wildlife	03/01/2002	South Kingstown	13.59	\$242,500.00
Conservation Easement			Glocester LT/ Hedsian	Local Grants/Open Space	01/24/2002	Glocester	201.9	\$444,500.00
Conservation Easement			Mowry, Pleasant Avenue	Local Grants/Open Space	02/11/2002	Smithfield	93.92	\$640,000.00
Conservation Easement			Sabetta Land Acquisition	Local Grants/Open Space	01/03/2002	West Warwick	31.28	\$295,000.00
Conservation Easement			Pratt Property	Local Grants/Open Space	06/28/2002	West Greenwich	55.6	\$280,000.00
Conservation Easement			Crooked Brook Parcels	Local Grants/Open Space	03/08/2002	Narragansett	74	\$635,000.00
Fee Title			Hopkinton Associates, LLC	Fish & Wildlife	04/05/2002	Hopkinton	180.9	\$980,000.00

Number of Projects: 8 Acres: 721.49 \$4,157,000.00

Acquisition Type	Project ID	DEM AREA	PROPERTY	DEM Division	Date Acquired	City/Town	Acres	Appraised Value
2001								
Agricultural Development Rights			Tucker, Shirley J.	Agricultural Land Preservation	09/28/2001	Richmond	55.44	\$255,000.00
Agricultural Development Rights			Knowlton	Agricultural Land Preservation	07/19/2001	Scituate	110.6	\$660,000.00
Agricultural Development Rights			Kenyon Farm	Local Grants/Open Space	12/20/2001	South Kingstown	172.1	\$774,127.00
Conservation Easement			Hayfield/TNC	Fish & Wildlife	09/05/2001	Foster	124	\$148,000.00
Conservation Easement			Farnham Farm	Fish & Wildlife	10/22/2001	Portsmouth	11.38	\$20,000.00
Conservation Easement			Thomas	Forest Lands	09/18/2001	Scituate	43.88	\$218,000.00
Conservation Easement			Bosworth St. Cons. Area	Local Grants/Open Space	11/05/2001	Barrington	10.15	\$600,000.00
Conservation Easement			Sprague Farm	Local Grants/Open Space	08/10/2001	Glocester	350.2	\$950,000.00
Conservation Easement			Capozzi	Local Grants/Open Space	08/10/2001	Jamestown	9.59	\$365,000.00
Conservation Easement			Waypoyset Preserve	Local Grants/Open Space	12/18/2001	Bristol	20.36	\$1,035,000.00
Conservation Easement			Nunes Farm	Local Grants/Open Space	12/13/2001	Middletown	51	\$680,000.00
Conservation Easement			Winfield Tucker	Local Grants/Open Space	07/31/2001	North Kingstown	126.3	\$1,800,000.00
Fee Title			Dyer Island	Fish & Wildlife	09/06/2001	Portsmouth	28	\$495,000.00
Fee Title			Koszela	Fish & Wildlife	12/17/2001	Exeter	69.85	\$140,000.00
Fee Title			Durfee	Fish & Wildlife	07/16/2001	Tiverton	11.03	\$70,000.00
Fee Title			O'Reilly	Fish & Wildlife	08/31/2001	Glocester	96.5	\$150,000.00

Acquisition Type	Project ID	DEM AREA	PROPERTY	DEM Division	Date Acquired	City/Town	Acres	Appraised Value
Fee Title			Taber	Fish & Wildlife	10/04/2001	Glocester	117.3	\$338,000.00
Fee Title			Cate	Fish & Wildlife	11/05/2001	Glocester	131.8	\$180,000.00
Fee Title			A.P.L. Realty Co., Inc.	Fish & Wildlife	12/11/2001	Exeter	6.8	\$6,800.00
Fee Title			Palombo	Fish & Wildlife	12/17/2001	Exeter	7.55	\$65,000.00
Fee Title			Eddy	Fish & Wildlife	12/20/2001	Richmond	8.72	\$70,000.00
Fee Title			Raymond	Fish & Wildlife	12/21/2001	Burrillville	44.33	\$205,000.00
Fee Title			Morash/Toste Farm	Fish & Wildlife	12/24/2001	Tiverton	337	\$2,359,000.00
Fee Title			A.P.L. Realty Co., Inc.	Fish & Wildlife	12/11/2001	Hopkinton	160	\$885,000.00
Fee Title			Cappelli	Parks, Beaches, Bike Paths	11/06/2001	Johnston	0.99	\$183,700.00
Fee Title			Sefsick, Estate of Mary E.	Parks, Beaches, Bike Paths	12/15/2001	Johnston	0.943	\$125,000.00
Fee Title			Pellegrino	Parks, Beaches, Bike Paths	11/07/2001	Johnston	1.93	\$191,000.00

Number of Projects: 27 Acres: 2,107.70 \$12,968,627.00