

835

May 192

Orvin E. Jones, Gesler St.
#22-24 S.E. cor. of Knight.
J.A. Blackman, D.L.

Permit # 6573.

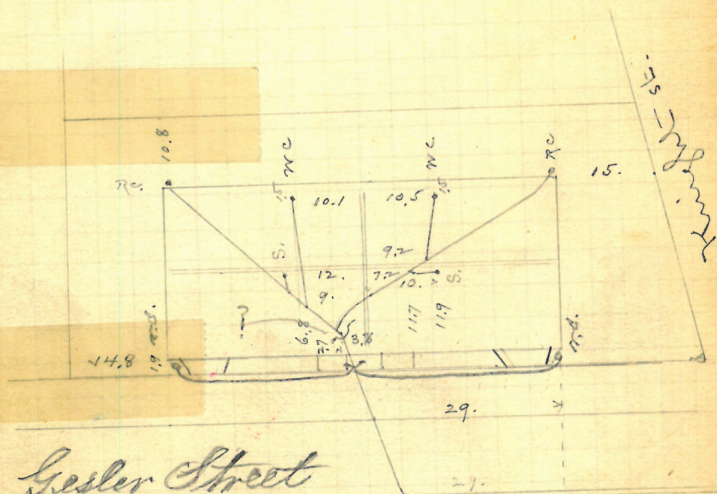
Opened May 5, 1892.

Closed " 10, "

Reopened Apr 5, 1912

Closed " 6-1912

Ch. Chello D. S. - cut at curb, 9. ft. pipes
as reported by Jack.

Platted

Enter sewer 47.1 ft. E. of
m.h. at Knight St.

Pelix Smith

B. Brady D.L.

++3 Courtland St

Permit # 6580

Opened May 4, 1892

Closed " 5 "

5" pipes

Reopened Dec. 13-1901

A. Biello D.L. - Clearcut

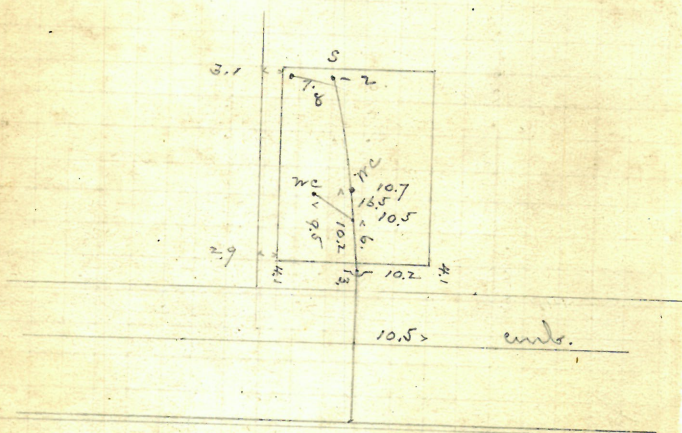
Reopened Sept 19, 1934

Closed - Sept 20, 1934

J. Colavecchio - 2" I

Cut at curb, 10.1 as reported by Trans.

Platted



Enters sewer 92 ft. S. of 1st. main.
S. of 1st. main.

R. J. J.

May 4/92

Opened May 4, 1892.

Gloved " 5' " 5" inches.

Reopened Jan'y 29-1900

Closed 11/30-1900

H. M^c M^c Goldrick D.L.

Reopened Oct. 27-1905

Closed " 30-1905

Geo. F. Lewis D. D.

Reopened Mch 11-19/3

Prof E. Gibbons D. L.

Reopened July 21-1921-

Closed 11-22-1921-

E. Gibbons D. L. -

Cost - at curb 10.

as reported by "Frank"

Reopened Mch 11-1913

Closed 11-11-1913

E. Gibbons D. L.

Plattid



Appleton Street

Enter sewer 93 ft. N. of 2
m.h. N. of Deland st.

R. July 11/92

6 ✓

May

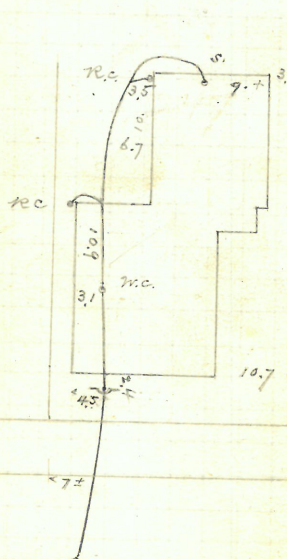
Est. of John T. Ingraham
A.R. Barney, D.L. 247 ~~197~~ Transit st.

Opened May 9, 1892. Permit # 6586.

Closed " " " 5" pipes.

Cut at end, 8.7

Platted



Enters sewer 68.3 ft. W. of
m.h. at angle.

May 5/92

Daniel James, No. Davis St.
 W. E. Sherman, D.L. *Transferred*
 Permit # 6587.

Opened May 5, 1892.
 Closed " 6 " (in st.) 5" pipe.

Reopened - July 17, 1941

Closed - July 18, 1941

S. M. Kirtick
 Relocate W.C. 18.8

opened 6/20/57

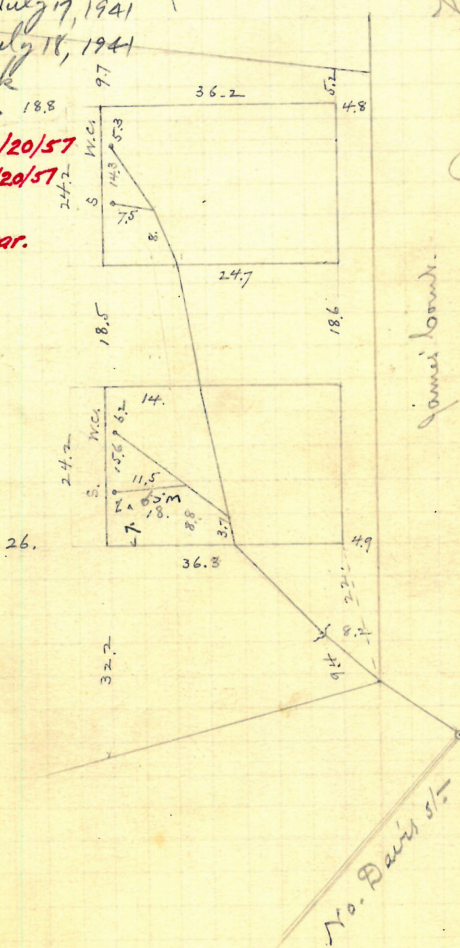
sed 6/29/57

M. Iacabbe

move trap - Clear.

No cut. M.h.
 inside curb.

Platted



No. Davis St.
 No. Davis St.

Enters m.h. (Wherry tap), near
 Douglass ave.

R. May 16/92

May 5

Est. Daniel Barr, 126 8th Pleasant
N.W. cor. Knowles.

John Keogh, D.L.

Permit # 6588.

Opened May 10, 1892.

Closed " 12, " 5" pipes.

Reopened Apr. 2 " 95

Closed " 2 " 95

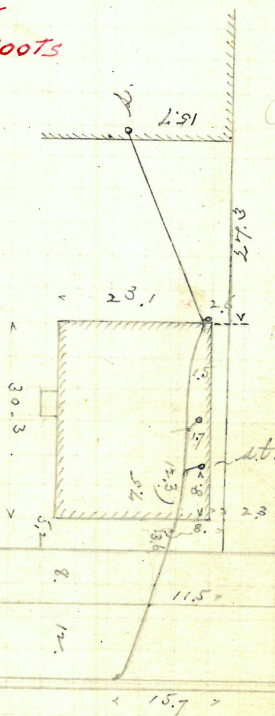
J. M. Keon, D. L.

Reopened & closed Aug. 5 " 97 - N. H. Colgrove D. L.

Reopened 5/6/58

Closed 5/6/58

D. L. R. Trotter Roots



Plotted

Knowles Street

Pleasant Street

Enters sewer 108.9 ft. E. of
1st. m.h. W. of Knowles st. R July 11/92

May 7

Abby J. Lovell, wife of Reuben P.
 49 Chestnut st.
 John J. Deignan, D.L.

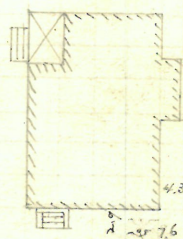
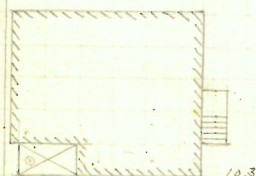
Opened May 10, 1892
 Closed " 14, "

Permit # 6596

5" pipes.

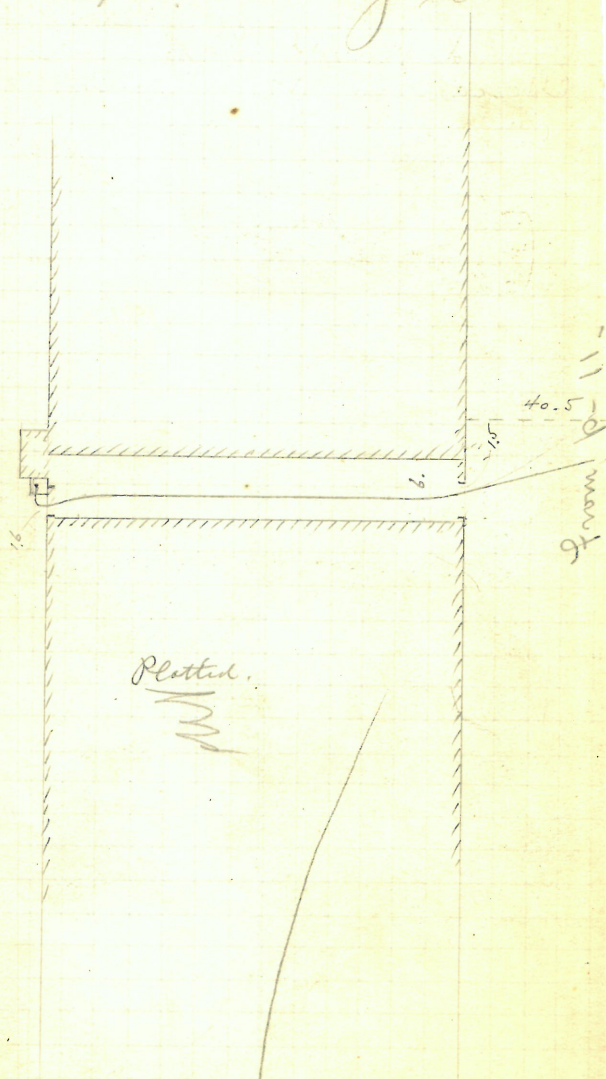
but at ends, 9.4

Plotted



Enters sewer 22.5 N. of 2^d m.h. R. July 20th 92
 S. of Atwell's ave.

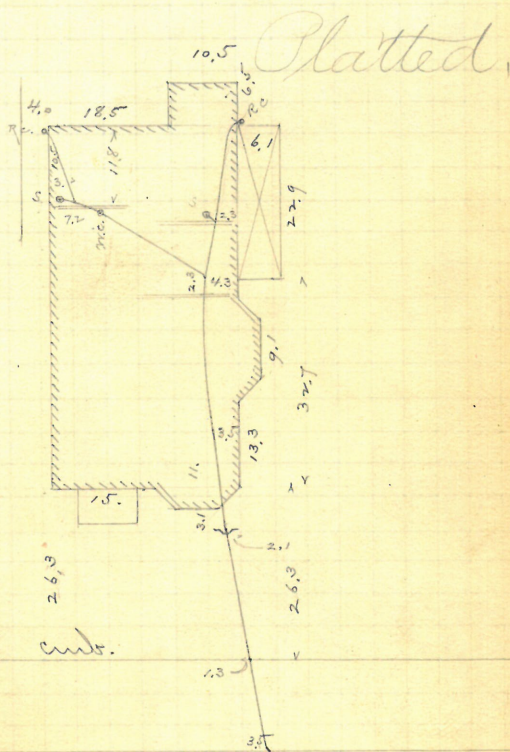
Prov. Worsted Mills - bank-
 #172? Valley S-1



13
May 9/92

James McGowan
P 45 47 48 49 bypress st.
B. Brady D.L.

Permit # 6601.
Opened May 9, 1892. (noon)
Closed " 11, " (night.) 5" pipes



Enters sewer 179.4 ft. E. R. July 11/92
of 2d m. n. E. of N. Main st.

May 10

Chas. E. Carpenter
 #26-28 to Pitman St.
 John W. Furlong, Sr. N.E. Cor. 3rd St.
 Permit #6603.

Through misunderstanding this work was done and covered before permit was issued and this approximate diagram is made upon information given by Mr. Furlong and Mr. Carpenter, May 17, 1892.

Opened May, 1892.

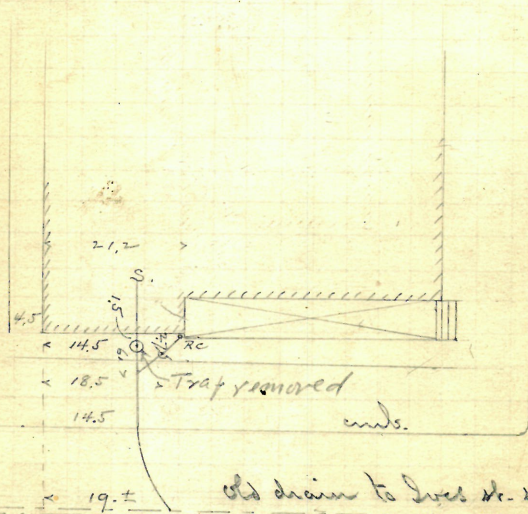
Closed

" Reopened Nov. 28, 1899

" Closed Nov. 29, 1899

R. Elhatten C. remove trap

Altered



Pitman St.

old drain to 2nd St. sewer

R. May 23

May 10/92

City of Prov. 92
Saml. Morrey Est.
32 Hammond St.
N.E. Cor. Division St.

Wm. E. Sherman, D.L. Permit # 6604

Opened May 10, 1892. (10 am) 6" pipe.
Closed " 14 " "

Reopened Feby 10-1906

Closed 11/12-1906

J. Deary D. L. - Clairmont -

Respected Aug 6 1945

Closed Aug. 6 1945

to clear sketch of Drain No
and its office L Handle 125

Ther. Aug. 18 / 32

Phd. 20. / 32

N. Bolgrave D. L. (Cham)

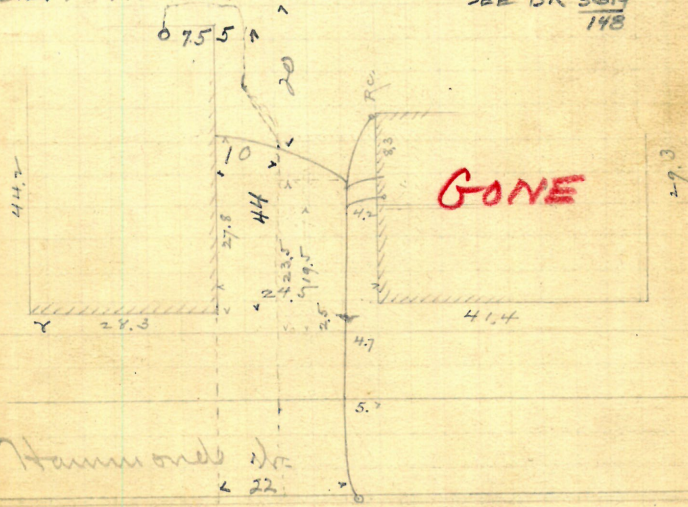
Plattner

Reopened 9/7/56

Closed 9/7/56 (Clear Roots)

D. L. M. ROSS

SEE BK 3614
148



Hammond's

Enter sewer at 1st. m. h.
N. of Division st.

R. May 23/92

16^v

For 6606 see p. 9.

$$\frac{P170A}{26} + \frac{159}{12}$$

May 11/92

James Ackroyd

Walter S. Wilcox, D.L. Wayland ave.

Permit # 6613.

Opened May 12 1892.

Closed " 17 am, "

6" pipes.

Reopened - { June 12, 1934

Cut at curb, 10.2-

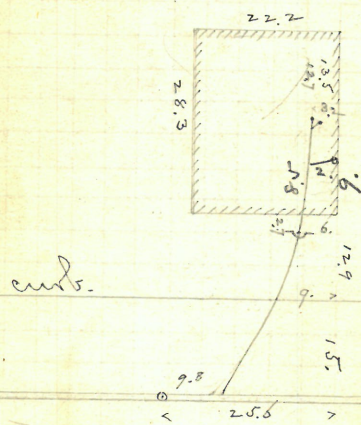
S. McCarthy - 4" I & V.

Reo. 4/22/65 Closed 4/22/65

D.L.G. Thibault See Bk. 1375/127 for

New bldg. Corn 13

Platted.



Enters sewer 9.8 ft. N.
 of 2 m.h. N. of Putnam St.

R. May 23/92

City of Providence
Hoba Burlingame -
30 Hammond St.

B. Brady, D.L.

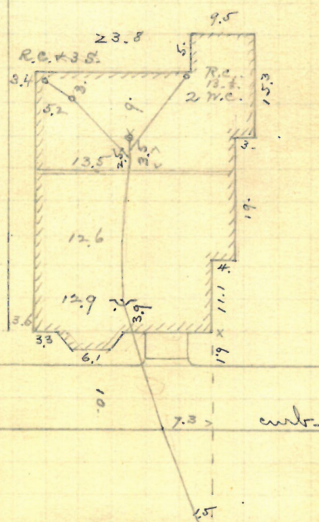
Opened May 24, 1892

Permit # 6636.

6" pipes

Cut at curb,
9.6

Platted



Entered as per 11/1/22
Enter sewer 73.6 ft. N.
of 1st m.w. N. of Division St.

R. July 11/92

20^vP. $\frac{161}{45}$ May 1
NW

Joshua M. Addeman,
Bernard Brady, D.L. 72 Courtland St.
S. of Grove St.
Permit #6625.

Opened May 25, 1892.

Closed " 26, " 5" pipes

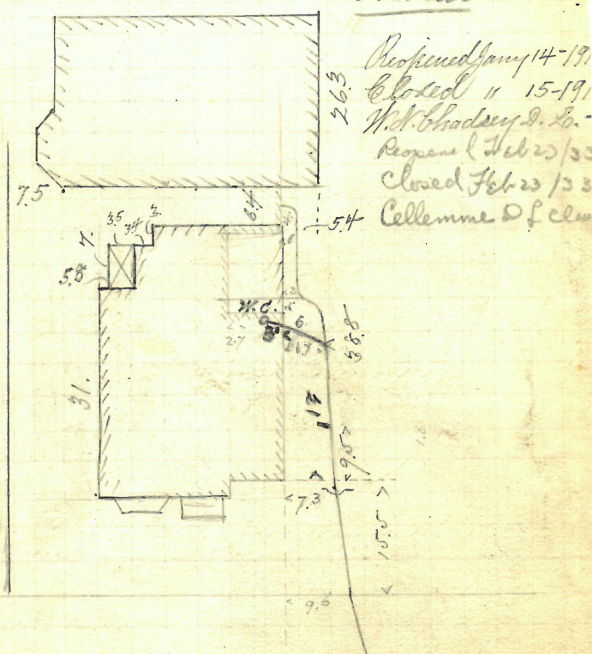
Reopened May 8, 93. Cut at curb.

Closed May 9, 93. A.B. Root, D.L. 103

Reopened Dec. 18, 94

Closed Dec. 18, 94 } D. Holmes & S.L. } born

Cleanout

Reopened + closed Sept. 19/95 by D. Holmes (Relaid
Platted)

Reopened Jan 14-19
Closed " 15-19
W. H. Chodsey, D. L.
Reopened Feb 25/33
Closed Feb 25/33
Celleman of clew

Grove St

Enter sewer 65.1 ft. S. of 1st.
m. S. of Ring St.

R. July 11/92

May 17/92

W. L. + H. L. Scarborough,
 85-87 ~~119~~ Parade St.
 J. Frank Read, D.L.

Permit # 6635.

Opened May 19, 1892.

Reopened Aug. 30-1910

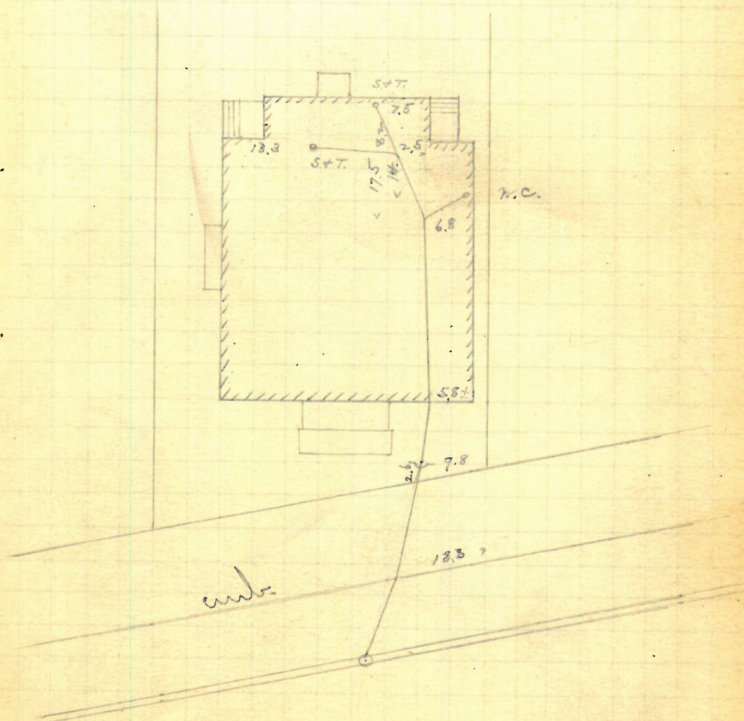
Closed Sept. 1-1910

J. Deary & Co. Cleanout

5" pipe.

Cut, 10.2 as reported.

Plotted.



Enters sewer at 1st. in. N. of main at Hudson St.

R. July 11/92

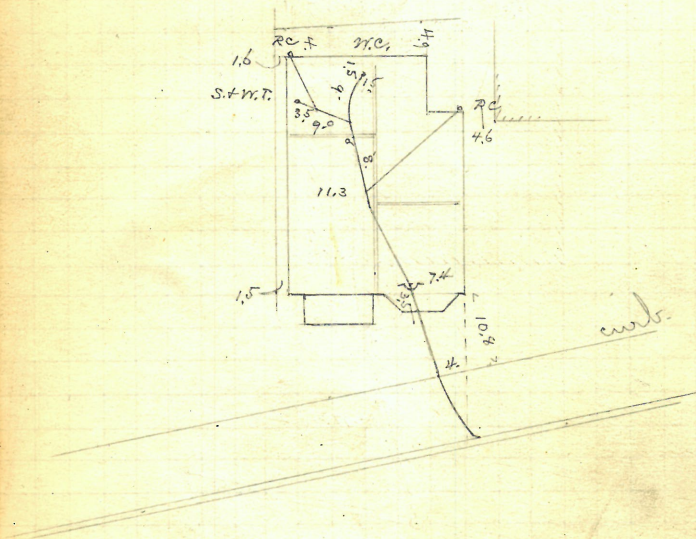
22✓

May 1892

Matilda Mason,
 #102-104 Kenyon St.
 Jason A. Blackman, St. L.
 Permit # 6639.
 Opened May 23^d 1892.
 Closed " 26 " 5" pipes.
 Cut at curb, 9.2

Corr 24

Platted



Entire sewer 106.9 ft. E. of
 1st m.v. (at America St.)

70. Wagonville Sep 40
" #6640 " " 81

23
May 19/92

City of Providence,
Samuel Moore

Samuel Moore

26 Hammond st.

Wm. E. Sherman, D.L.

Permit # 6643.

Opened May 19, 1892.

Closed

" 24

5" pipes -

Reopened & closed Dec 1-1904

cut at curb

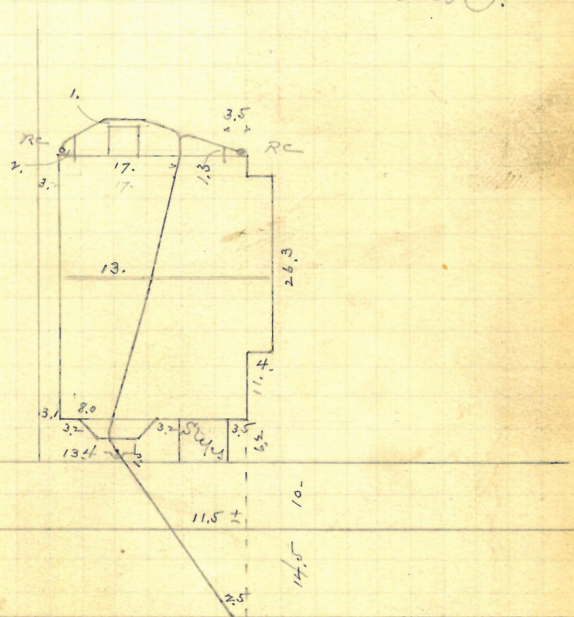
A. Aiello D. L. - Cleanout

10 ft.

Reopened April 7, 1952

Closed April 10, 1952 4/7/52

T.A. Gambino remove trap open sewer

~~Plotted~~

~~Croc. entus as per Ibid p 17~~

Enter seven 25.3 N. of
2d m. N. of Division st.

R. July 11/92

May 1892

Industrial Trust Co.

#47-51² Westminster St.,
N.E. cor Exchange St.

J. Frank Read, D.L. Permit # 6644.

Opened May 19, 1892.

Closed "

" 26 "

Reopened Sept 11 - 1893

Closed Sept - 1893

6" pipes
Cut at cut, 83

Thos Phillips D. L.

Reopened Jan 24 - 1910

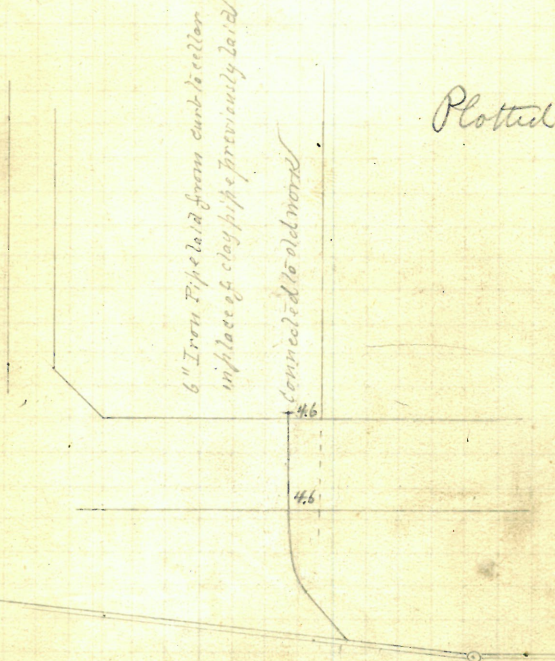
Closed " 26 - 1910

W. Fogarty D. L. -

Telegraph & Relay

See p. 2

James W.

Enters sewer 19.5 f. W. of 2^d
m.w. W. of the river.

R. July 20/92

25
May 19/192

Edward W. Fiske

#109 Kenyon St.

N.E. cor. of America St.

Bernard Brady, D.L.

Permit # 6646.

Opened May 27, 1892

Closed " 28 " "

5" pipes.

Cut at curb, about 10.0

Reopened & Joid in Aug. '92,
to add sink, by B. Brady, D.L.

Reopened Mch 4-1907

Closed " 6-1907

A. Biello D.L. - Cleanout

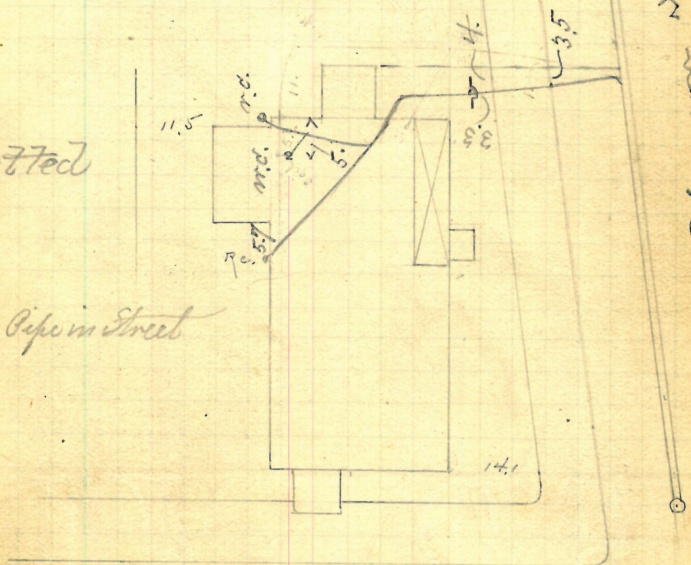
Reopened Sept 9-1907

Closed " 17-1907

A. Biello D.L.

Plotted

Iron Pipe in Street



America St.

Enter sewer 64.9 ft. E. of
1st int. (at America St.)

TR July 11/92

May 2

Monzo T. Cross,

53 Warren St.

B. Brady, D.L.

Permit # 6649.

Opened May 24, 1892.

6" high

Closed

11 27 11

Reopened March 30 1899

Cult. al. cult.

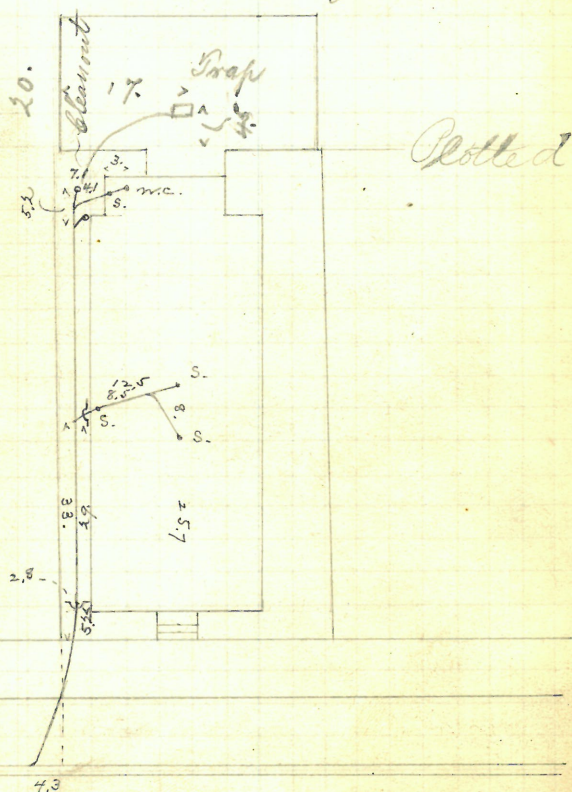
Closed April 11 99

Reopened Sept-3-1907

J. A. Blackman & S.

Closed " 4-1907

J. Deary D. L.



Enter river 37.5 ft. E. of 3^d R. July 20/92
n.e. E. of Harbor St. Harrison St.

W. H. E. of ~~Harrison St.~~ Harrison St.

R-July 20/92

~~REMOVED~~

27
May 27/92

George T. Brady, 33 Dodge St.

B. Brady, D.L.

Permit # 6663.

Opened June 1, 1892

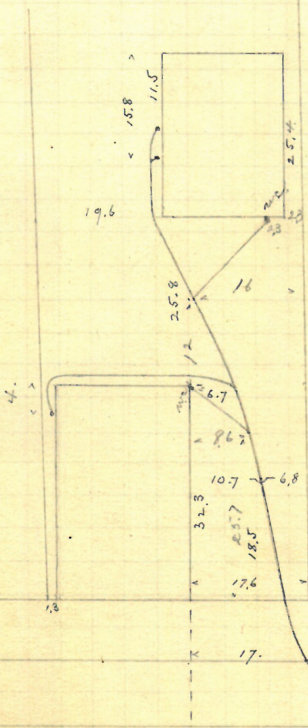
Closed " 4 "

5" pipes.

Reopened June 6, 93

Closed June 6, 93

B. Brady D.L.



Plotted.

Enters sewer 10 ft. N. of
3d. w. N. of Cornhill St.

R. July 11/92

28 ✓

REMOVED

May 27

George F. Long, 37 Dodge St.
 B. Brady, D.L.

Permit # 6664.

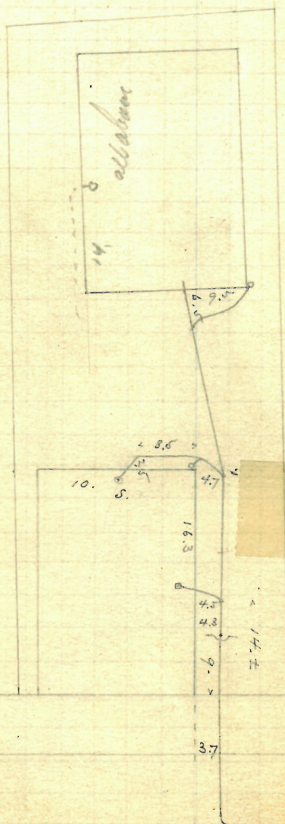
Opened May 28, 1892.

Closed June 4. "

Reopened Jan 6, 1932

A. E. Quigley D.L.

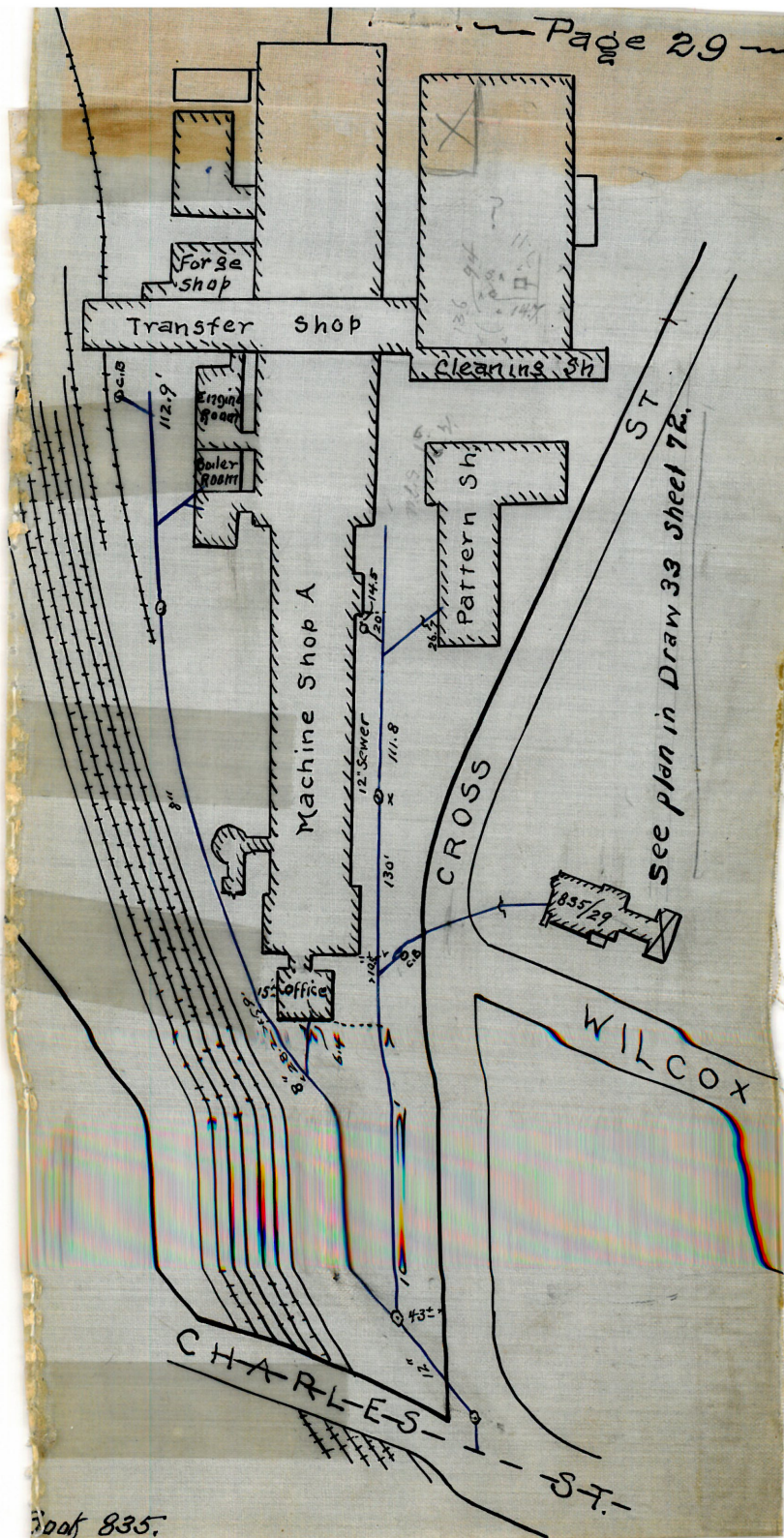
Cut at curb, 9.8.



Platted

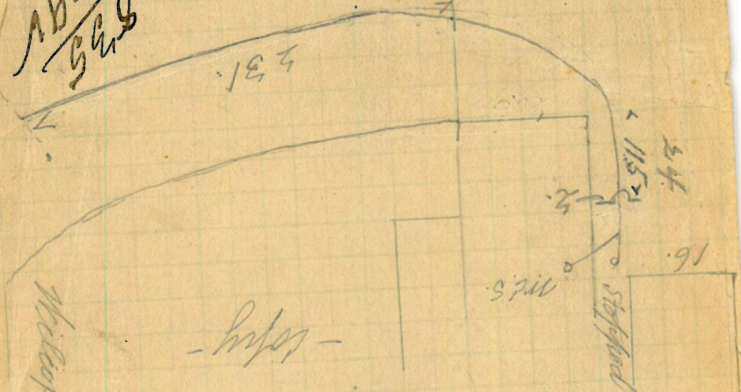
R. July 11/92

Enters sewer (by cutting in) 92.5 ft. of 2nd m.d. N. of Chestnut St.



See plan in Draw 33 Sheet 72.

835
294



246665
 May 21-1917
 Am. British Mfg. Co.
 Forest St.
 Baltimore Md.
 Received May 22-1917
 closed 11 25-1917

30W

May 28
92Edward W. Murch,
3 Angell Court,
Congdon St. sewer.

Thos Phillips & Co., D.L.

Permit # 6666.

Spersed May 31, 1892.

Closed June 7 "

Re-open May 24 1950 5/24/50

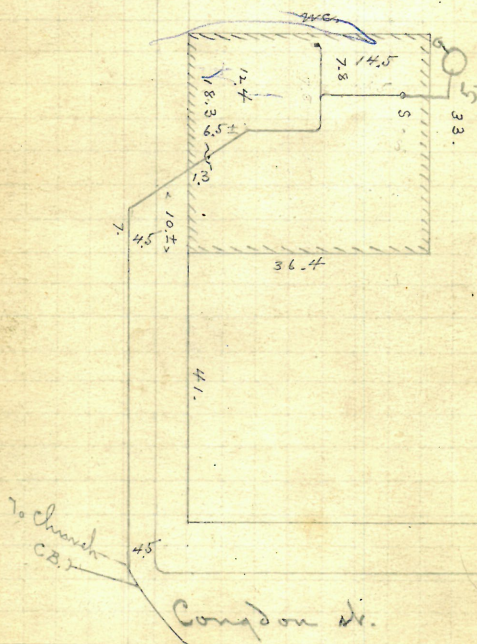
Clo May 24 1950

at C B M. Russell P.L.

Cut at curb, 5.

5" pipes.

Con. from

Platted

R. July 11/92

Enters sewer through end of branch
line leading into Angell Court.

GONE

May 31 28/92

City of Providence,
Samuel J. Smith, Lessee,
20-22 Division St.
N.W. cor. Luther St.
Hammond St. sewer.

B. Brady, W.L.

Permit # 6667.

Opened May 31, 1892

6" pipes.

Closed June 2

Reopened, Apr. 19-1916

Cult at cult. 8.4

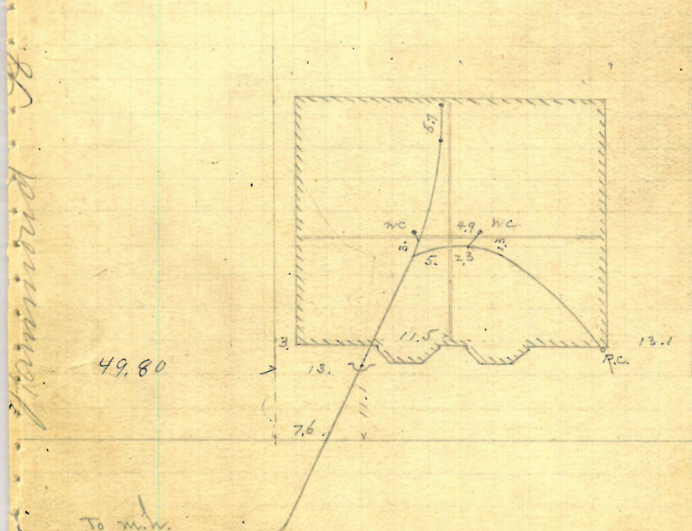
Closed " 1916

Passed June 1. 1929

J. Deary & L. Cleamout

Cloud June 1, 1929
M. McNally D.L.

Plotted.



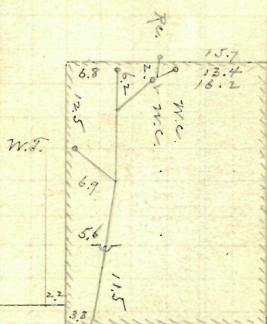
Enters sewer through branch
line into Division St.

R. July 20/92

May 23rd 92

Lorenzo Vaughn, 352 Braunton St.
 J.A. Blackman, D.L. Permit # 6654.
 Opened June 1, 1892. 6" pipes.

Plotted.



Diamond St.

Braunton

Enter sewer 60 f. W. of
 2nd m.n. W. of Dexter St.

May 25 33
#8692 92

P. H. Cassidy, D.L.

Juneⁿ Harris & Atwell's ave^s.

Opened May 31, 1892.

5" pipes

Closed June 1, 1911

Cul. at entrance, 62

Reopened April - 93 - H. R. Chadsey D. L.

Reopened mch 28 - 95 - H. M. Goldrick D. D.

Reopened + closed Sept 10th 96

Cleanout - H. M^{rs} Goldrick D. D.

Reopened & closed Dec. 17th 96

Cleanout - H. M^r Goldrick D. L.

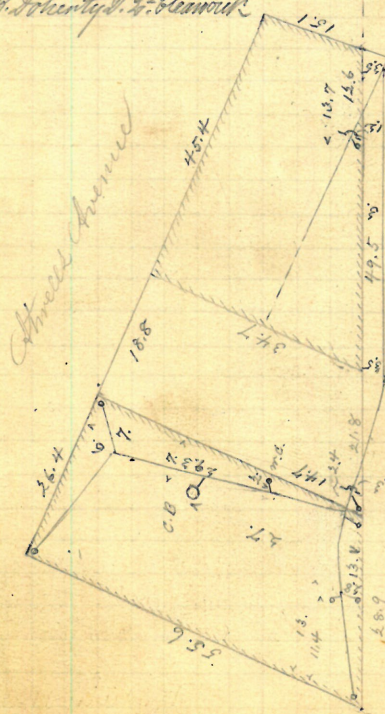
Reopened & closed Feb'y 10th 97

Cleanout - H. M^{rs} Goldrick D. L.

Reopened Nov. 1919 -

Closed 11 1919-

M. B. Johnty D. L. - Clewrock



Three (three)

Larri Avenue
 Published Nov. 5 1925
 Vol. 11 No. 5
 Detroit, Mich.

into Eagle Street Tavern

May 28
92

Hannah L. Newhall

#70 54? Barrington ave.
Theodore A. Perry, D.L.

Permit # 6671.

Opened May 31, 1892.

5" pipe.

Closed June 2 "

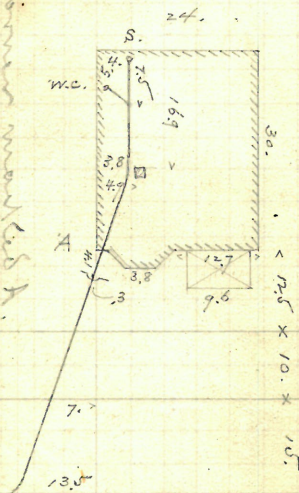
8/ Reopened Aug 7, 1940

5/ Closed Aug 9, 1940

A. Acciaichelli - Ch. roof

Cut at 10 ft. out
from building line,
13.7 ft. below level
of bottom of water
table of house.Platted

11
 10
 9
 8
 7
 6
 5
 4
 3
 2
 1
 0
 1
 2
 3
 4
 5
 6
 7
 8
 9
 10
 11
 12
 13
 14
 15
 16
 17
 18
 19
 20
 21
 22
 23
 24
 25
 26
 27
 28
 29
 30
 31
 32
 33
 34
 35
 36
 37
 38
 39
 40
 41
 42
 43
 44
 45
 46
 47
 48
 49
 50
 51
 52
 53
 54
 55
 56
 57
 58
 59
 60
 61
 62
 63
 64
 65
 66
 67
 68
 69
 70
 71
 72
 73
 74
 75
 76
 77
 78
 79
 80
 81
 82
 83
 84
 85
 86
 87
 88
 89
 90
 91
 92
 93
 94
 95
 96
 97
 98
 99
 100



Enters sewer 241.4 ft. E.
 of 2^d m.n. E. of Campst.

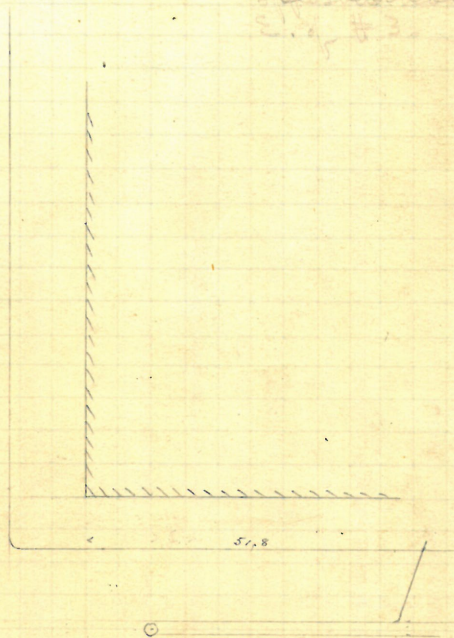
R. July 11/92

June 2³⁵
92

National Exchange Bank,
Exchange St.
J. Frank Read D.L. 3-7
Permit # 6681.
Opened June 2, 1892.
Closed " 3, " 6" pipe.
Cut at curb, 7.1

Cross curb 4.0
5" Platted
S. 1/2

Westminster St.



Enters sewer 37.4 ft. N. of
m.w. near Westminster St.

REMOVED

June 2/92

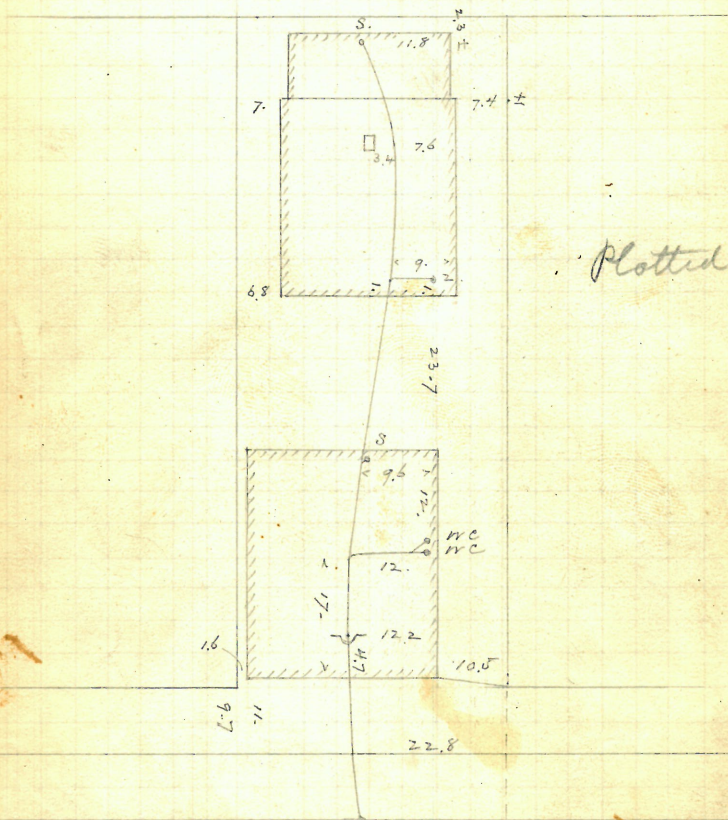
John A. Bennett
64-66 27 Dodge St.
J. Frank Read, D.L. Permit # 6683

Opened, July 21, 1892
Closed. " 23, "

Cloud. " 23, "

5" pipis.

Cut at cut, 10.3, as
reported.



Entered under 44. f. N. of 4th m. n.
N. of Cranston st.

H. 168
70

June 37
3/92

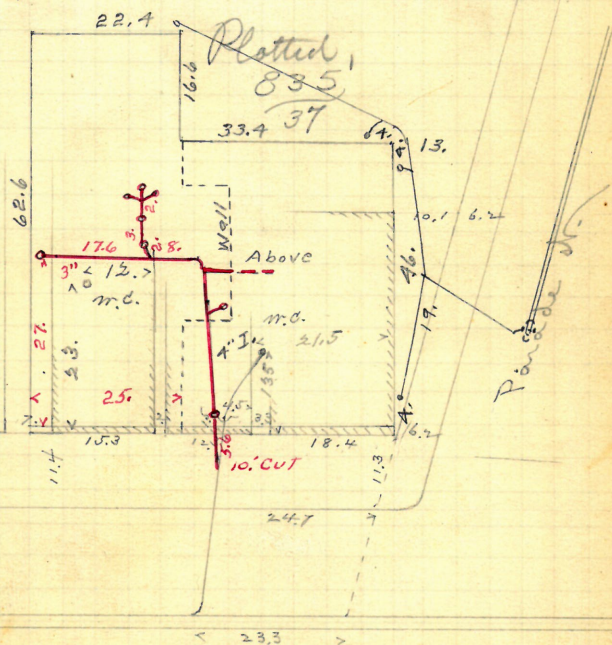
Chas. M. Nichols
#375 Cranston str.

J. Frank Read, D.L. Permit # 6685
Opened June 3, 1892. 6" pipe.
Closed " 24 " "

Reopened Jan'y 26-1901 Cut at curb 10.3.
Closed " 28-1901 as reported by
Cannon.

E. H. Carey D. L. ~
Reopened Nov. 12-1906 Reo. 12/2/65 Closed 12/6/65
Closed 1906 D.L.T. Toohy (Add)

E. Gifford D. L. ~ R. Conds. added 4/7/66 Sec 3430
24



R. July 11/92

Enter sewer 80. ft. N. of 1st. m.h.
E. of m.h. at Parade str.

June 4/92

National Exchange Bank,
217 Exchange St.
J. F. Read, D.L.

Permit # 6688.

Opened June 4, 1892

Closed " 8 " "

6' pipe.

Cut at curb, 7.1

Reopened Mch 14 " 95

Closed Mch 14 " 95

J. F. Read D.L.

Exchange St.

4.4

R.C. Trapped

To R.C.

X curb .45 N of tel pole.

4.8

Plotted

Exchange Place.

Enter sewer 10.6 ft. N. of
2d m.h. N. of Westminster St.

June 4/92 39

National Exchange Bank,
 9-17 Exchange St.
 J. Frank Read, D.L. Permit # 6689.

Opened June 6, 1892

Closed " 7, "

6" pipe.

Reopened & Closed May 6-1912

Cut at curb, 7' 2"

J. P. Tierney D.L. Change from 4" to 5" pipe.

Exchange Place.

x curb 21.3 N. of
 tel. pole

Plotted

63.2

Exchange St.

Enters sewer 34.7 ft. N.
 of 2nd m.h. N. of Westminster St.

40[✓]

\$2.00 permit-

May 18/92

Wauregan Mills,

To enter stone drain
in Ship st.

314 Dyer st.
S.E. Cor. of Ship.

41
May 28/92

Charles Alexander
#62 Humboldt ave.
J. A. Blackman, D.L.

Opened June 2, 1892.

Closed June 9, 1892.

Reopened June 18, 1893

Closed 11 22 1893

A. Gold D.L. -

Reopened June 10, 1937

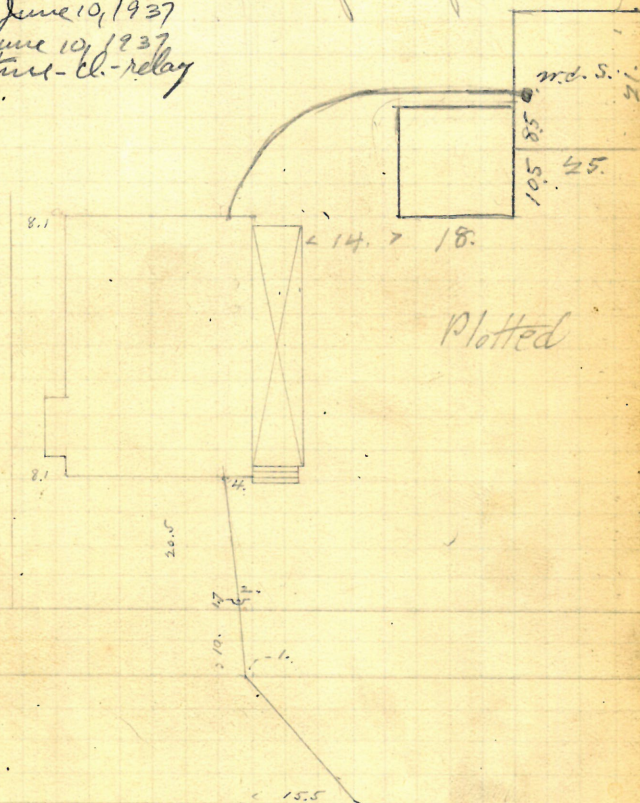
Closed June 10, 1937

P. Baletti - Ch. - relay

Permit # 6669.

6" pipe

Cut at curb, reported
by D.L. as 95 (about
1 ft. out from curb.)



Entire sewer 22.5 W. of
2d n.w. W. of Wayland ave

June 6/92

National Exchange Bank,
J. Frank Read Atty. 9-12 Exchange St.
Permit # 6696.

Opened June 8, 1892

Permit # 6696.

Closed

Opened June 8, 1892
Closed " " " " 6" pipes
Reopened Sept. 17, 1896 Cut at curb, 7.25
Closed " 22, 1896 L. P. Danieles & S.

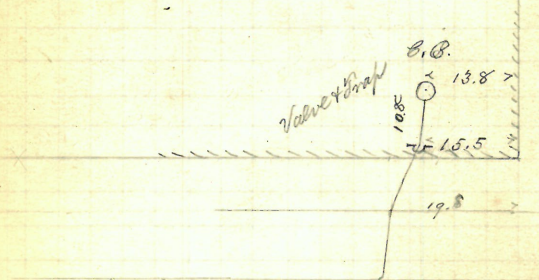
Reopened Sept 17th 96 } Cut at curb, 7.25
Closed " 22nd 96 } J. P. Daniel & S.

Reopened Sept. 19-1918

Reopened Sept. 19-1918
Closed 1918
A. Matteson & S. E. Repair -

→ Plotted -

Relaid from curb and catch
Basin, added Sept. 77-23, 96



Exchange No.

Enters sewer 80.2 ft. N. of
2^d m.v. from Westminster St.

REMOVED

43
June 7/92

Mary R. Wicks

wife of Oliver A.

367 Friendship St.,
E. cor. Lockwood

J. F. Read S.L.

Permit # 6699-
5" pipes.

Opened June 9, 1892
Closed " 10/1/92

Reopened Aug 31-1925
Closed Feb 1/1929
W. Lyons S.L. - Clearing

Cut at curb, re-
ported as 10.3

Platted

Reopened - Feb 4, 1935

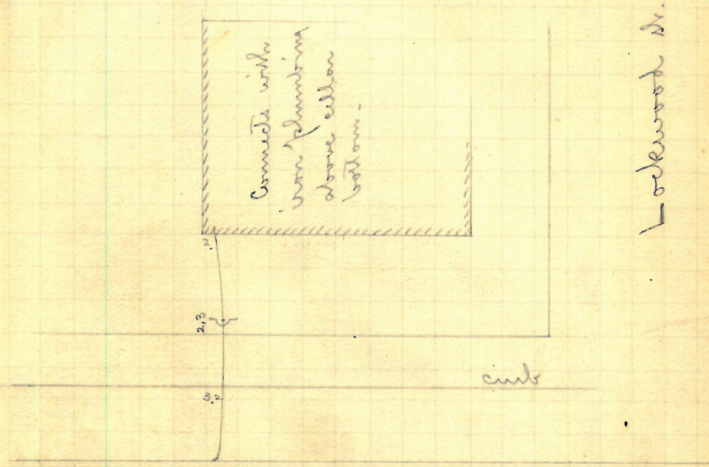
Closed - Feb 5, 1935

McNally - clear - roots

Reopened Aug 25, 1931

W. Lyons S.L.

120
E. 9
Permit



Enters sewer 26 ft. E. of the
1st. int. W. of Lockwood St.

June 7/92

Henry R. Russell,
117-119 Thayer St.
J. F. Read, D.L.

Permit # 6700

Opened June 10, 1892.

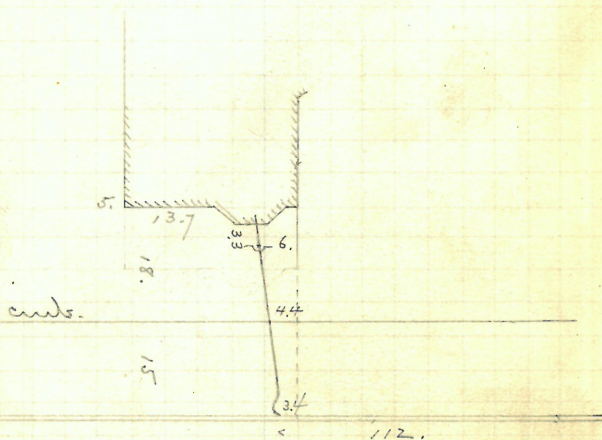
Closed " 13, "

6" pipes.

Cut at curb, 9.65

3 5" pipes

Platted.



Enters sewer 110 ft. N. of
1st m. N. of Charles Field St.
R. July 11/92

June 9/92 47

Arnold S. Hood,
153
J. Frank Read, N.L.

93 Hwy St.

Permit #6707.

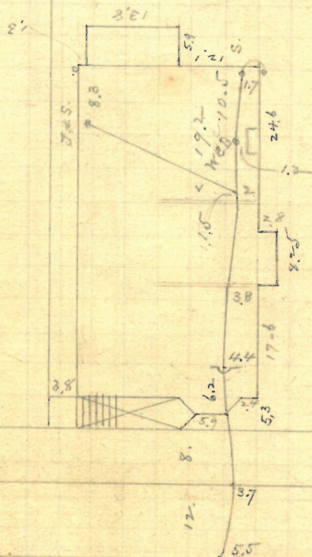
Opened June 13, 1892.

Closed " 15, "

5" pipe

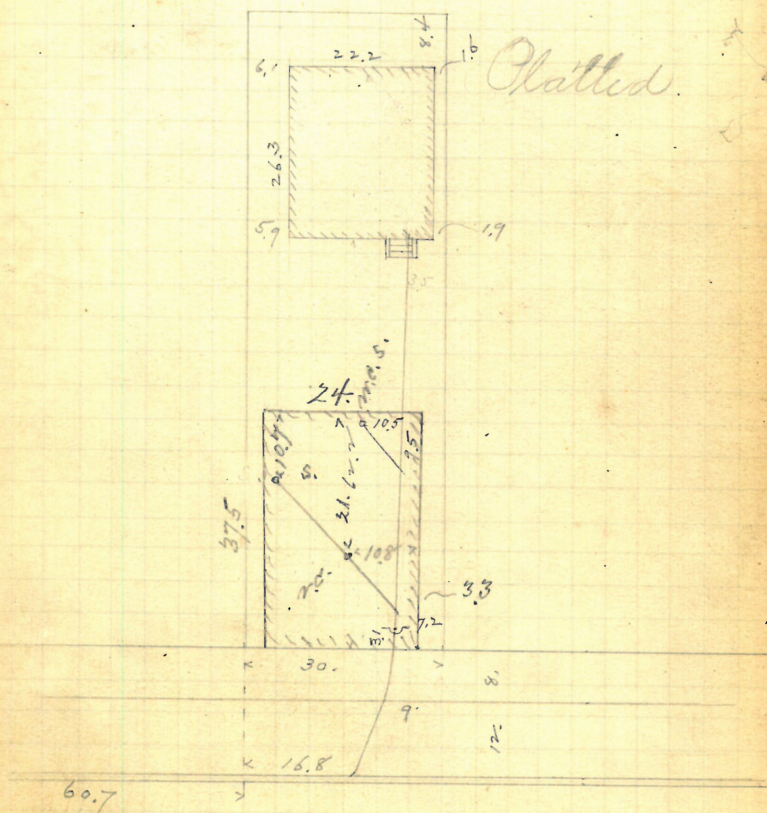
Cut at curb, 10' 2"
as reported by Cannon

Platting



Entire sewer 167.2 ft. S. of R. July 11/92.
main in range of N. side of Tell St.

James Kyle, ²²
J. Frank Read, ²¹ Vinton St.
D. L. Page, 1st



Enter. sewer 77.5 S. of
2d m. h. S. of Atwater's ave.

R. July 11/92

GONE

June 11

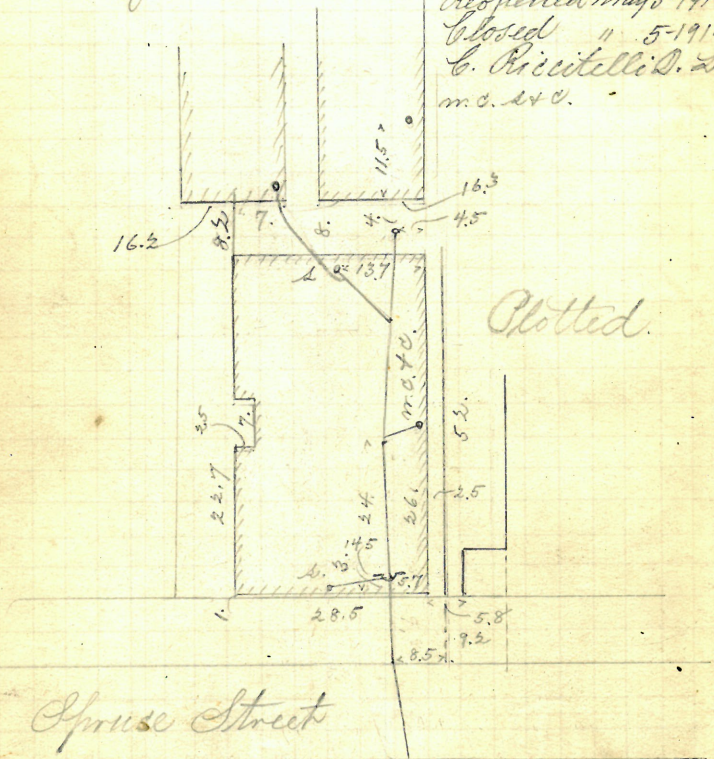
Paul Taylor, 164 Spruce St.
 J. Frank Reed, D.L. Permit # 6718

Opened June 16, 1892.

Closed " 18 " "
 Reopened April 3, 1897
 Closed " 8 " 97
 J. Deary D. L.

5" pipe
 cut at curb 10.2
 as reported by
 Common

Reopened May 5-1914
 Closed " 5-1914
 C. Riccitelli D. L.
 m.c. & c.



Enters sewer 207.9 ft. E. of
 m. n. at Mc Dowdy str.
 R. July 11/92

✓ June 14/92 51

City of Providence,
Hannah Pierce, Letter.
27-29 Hammond St.
Chas R. Blackburn, S.L.
Permit # 6722.
Opened June 15, 1892.
Closed " 23 " " 5" pipe.

OPENED 6/6/'77

CLOSED 6/6/'77

D. L. A. RICCI ②

INTO 29 HAMMOND STREET

TRAP REMOVED

P. J. K. INSP.

Cut at curb, 10. +



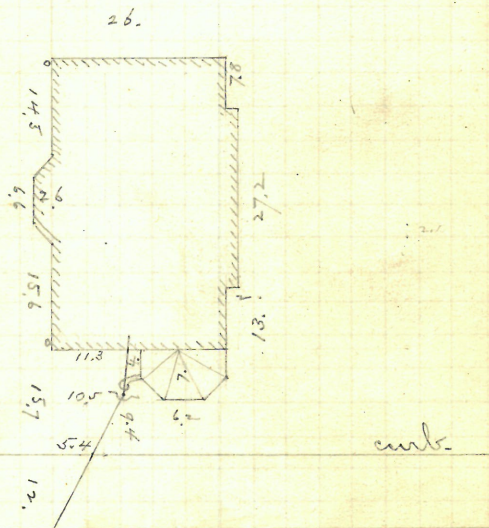
trap seals 2 1/2"

Enters sewer 46.3 ft. N. of P. July 11/92
100 ft. N. of Division St.

June 16
92

Wm. L. Milne, Villa ave.
J. Frank Read, D.L. Permit #6725.
Opened June 17, 1892. 5" pipes
Closed " 20, " " Cut at curb, said to be 9 ft.

Plotted

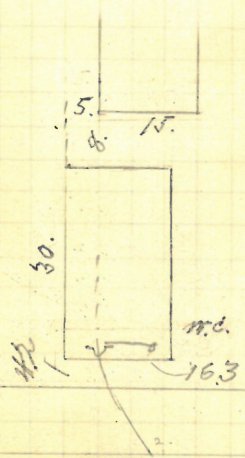


Enters sewer 38.26 ft. W. of
2d. m. N. W. of Taber Ave. R. July 11/92

✓ June 53
16
92

Alexander Durante, + wife,
23 Lily St.
J. Frank Read, D.L. Permit # 6726
Opened June 20, 1892 5 pipes.
Resumed June 19, 1918.
Closed 4 20-1918
C. E. Niccittelli D.L. - Cut 11 from surface,
near h.

Platted.

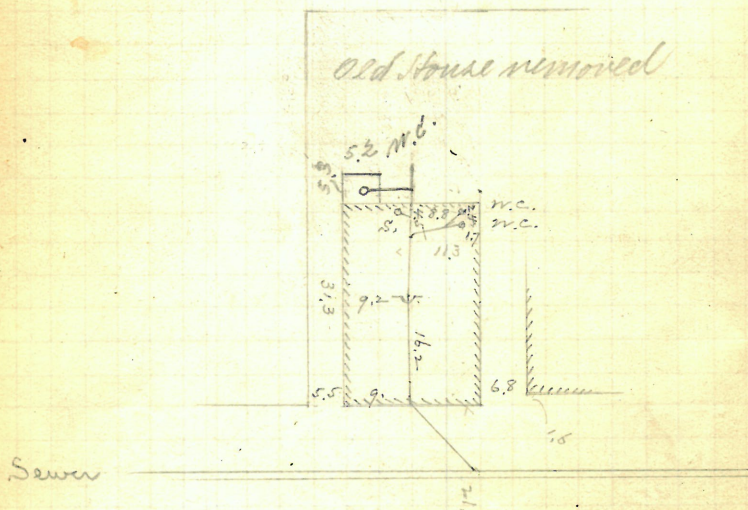


Lily Street

Enters sewer 40.9 ft. S.
of m.h. in Spruce St.

June 16/92

Alessandro Durante
 J. F. Read D.L. 13-15 Lilly St.
 Permit # 6727.
 Opened June 21, 1892.
 Closed " 23 " 5" pipes
 Reopened May 3-94
 Closed May 3-94 } No cuts or grade
 J. Frank Read D.L.
 Cleanout
 Reopened May 11-1914
 Closed " 11-1914 } Plotted
 P. Gallo D.L.
 Reopened July 14, 1927
 Closed July 15, 1927
 Giovanni Picitelli D.L.
 (Cleanout)



Enters sewer 98.8 ft. S. of
 m.d. in Spruce St.

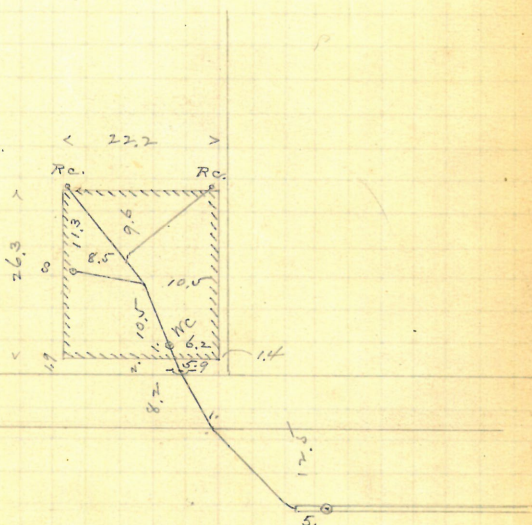
✓ June 17/92 55

John Donnell and wife,
33 Shore St.
John Keogh D.L.

Permit # 6730
Opened June 20, 1892. 5" pipes.
Closed " 21, " "

Cut at ends, 10.3

Plotted.



Enters sewer at end, 5 ft. N. of
m.b. near Heddy St.

June 17/92

City of Providence

Sidney S. Williams, lessee,
524 Hammond St.

J. Frank Read, D.L.

Permit # 6734.

Opened June 18, 1892.

Closed " 23 "

5" pipes

Cut at curb, 10.1
as reported by Cannon

Reopened Aug. '92

Closed " 25, "

Reopened Apr. 25, '98

Closed " 26, '98

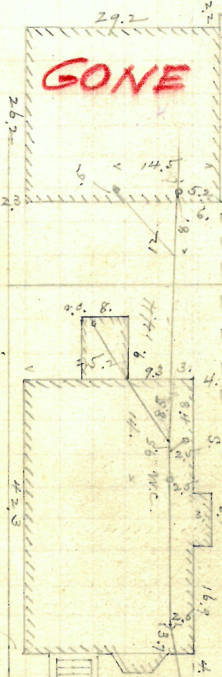
C. A. Blackmar D.L.

12 Reopened - Dec. 28, 1936

12 Closed - Dec. 28, 1936

a. Springers - Relay

near house - 4" I.



Platting

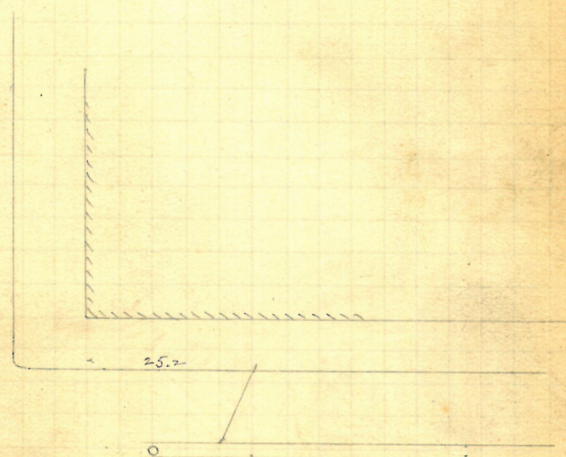
Enters series 22.14. N. of
W. m. N. of Dixie St.

Notes

June 18/92 59

National Exchange Bank
3-78 Exchange St.
J. Frank Read, Jr. 3-57 Westminster
Permit # 6739
Opened June 20, 1892
Closed " 21 " 6" pipes.
Cut at curb 7.7

Plotted.



Enters sewer 10.3 ft. N. of
1st. on W. N. of Westminster St.

June 18/92

National Exchange Bank
 J. Frank Read, D.L.
 9-87 Exchange St.
 Permit # 6740
 Opened June 20, 1892
 Closed " 22, " 1
 6" pipe
 Cut at cut, 7.5
 at on 1

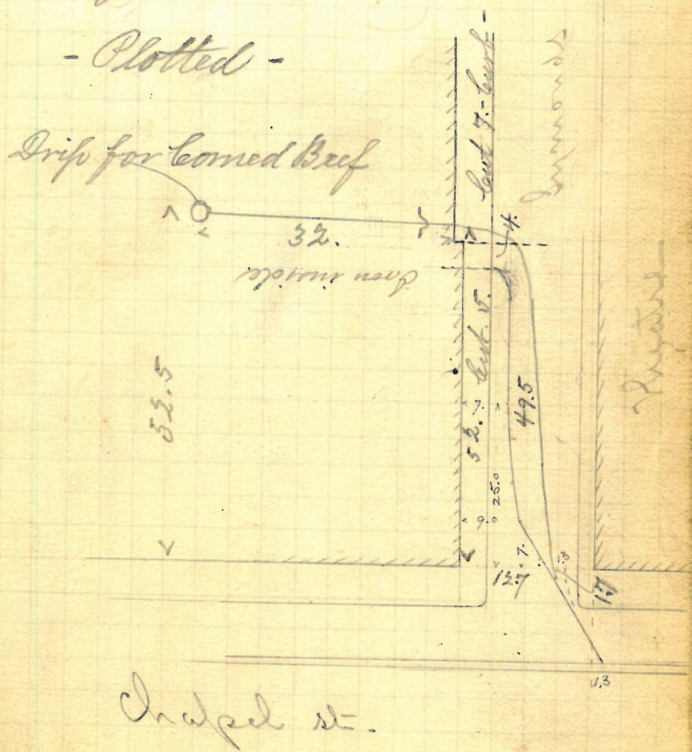
Enters sewer at 2^d mile from
 Westminster St.

V V Nov. 23/92 61

Amos B. Pearson, Chapel St.
 P. Brady W.L. #307
 Permit # 6745.
 Opened Nov. 24, 1892. 6" pipes
 Closed " 25, " "
 Reopened July 31-1900 Reopened Sept 14-1904
 Closed Aug 11-1900 Closed " 16-1904
 A. Aiello D. L. — P. H. Lyons & Co. - Belmont
 Reopened Sept. 7-1908
 Closed " 18-1908
 J. Deary D. L. —

- Plotted -

Drip for Corned Beef



Enters sewer 38.3 (cut in).
 S. of 2 m. N. W. of Union St.

June 20
9

251-4201

✓ B. Mc Ginnell

Sarah F. McHenry

P. H. Cassidy, D.L. C.E. for ⁺⁶⁸ Spence St.
Paint # 6746.

Opened June 21, 1892. 5" pipes.
Closed " 25. "

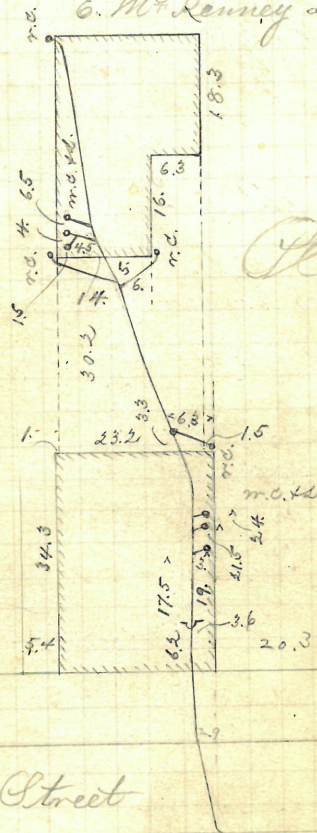
Closed " 25. " 1

Reopened Apr. 22nd 96

Closed " 24" 96 10.4

E. M^c Kenney D. L.

280 ft



Platted

Sutton Street

Old House built
out 4 ft to Street
Line —

Spruce Street

Enter. sewer 171.4 f. E. of R. July 11/92
cont. at McQuay St.

W June 21/92 63

George S. Smith

#366 P.W. Exchange St.
S.W. cor. Brayton Ave.

Thos Phillips & Co. D.L.

Opened June 27, 1892 Permit # 6749

Closed " 30, " "

Reopened Oct. 19-1911

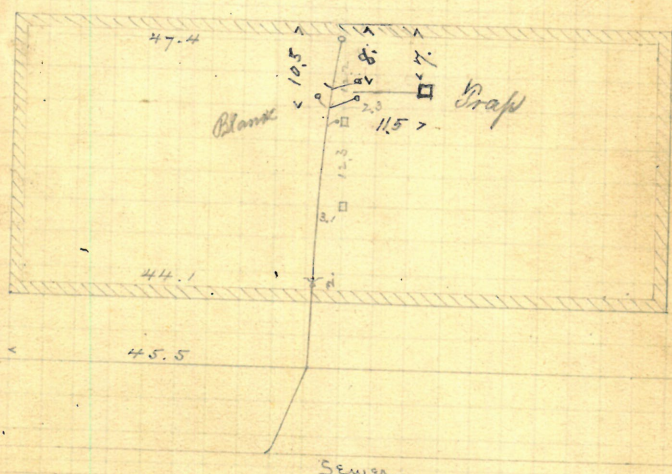
Closed " 19-1911

D. Holmes & Co.

Cut at ends.

10.8

Plotted



Enters sewer 90 ft. W. of
m.h. in E. line of Brayton Ave.

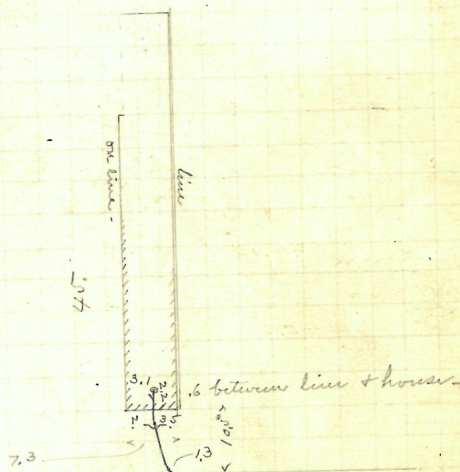
June 22
9

Giuseppe Petrosenelli + wife,
 25 Lily St.
 P.H. Cassidy, St. Permit # 6750

Spaced June 27, 1892. 5" pipes
 closed " 28, " "

Cut (4 ft. out
 from house) 11
 ft. below front
 door sill.

Platted.



Entire sewer 25.7 ft. S. of
 m.d. in Spruce St.

P. July 11/92

June 22¹/₂ 92

Gaetano Petrosenelli + wife,

P. H. Cassidy ¹⁰⁷ Lily St.

Permit # 6751

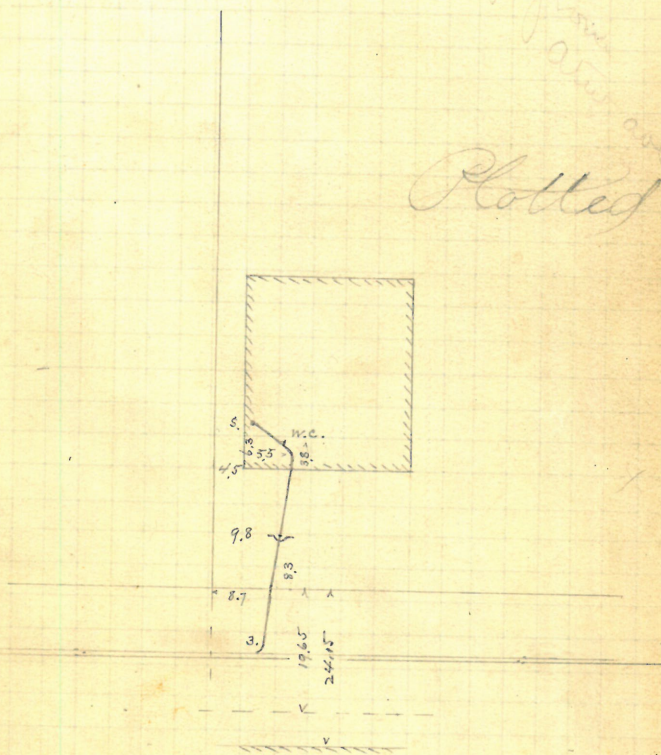
Opened July 9, 1892.

Closed.

" " " "

5" pipes.

Plotted.



Enters sewer 129.4 S. of the R. July 20/92
 m.v. at Lily St. in Spence St.

H. 169-55 June 22/92
Dec. 20

Stephen H. Williams.

221 Irving ave

Chas. R. Blackman, D.L.

Permit # 6752

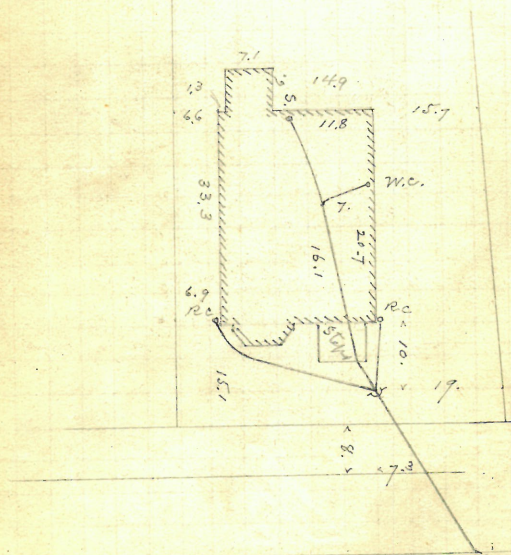
Opened June 23, 1892

5" pipe

Closed 11 27, 11

Cut 12 ft. below
top of bark-board
fence, the assumed
knot line being 8 ft.
out from fence.

Platted



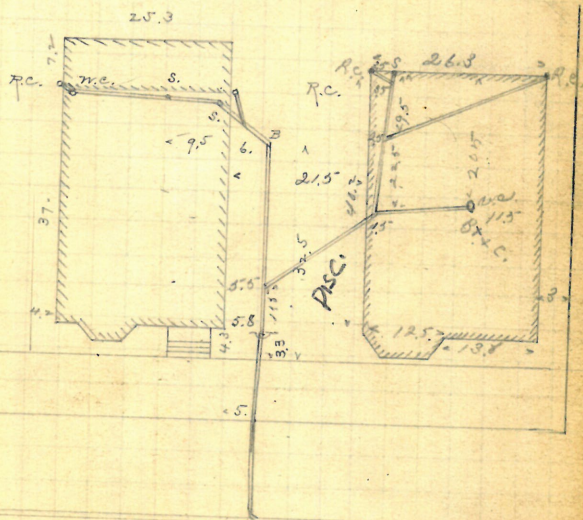
Enter seen 49.6 f. E. of m.h. R. July 11/92
at junction with Butler obs. given.

See 3246
30

June 23/92 67

Clarence A. Gorton
#115 22 Waverly st.
Harrist Holmes, D.L.
Opened June 24, 1892 Permit # 6755
Closed " 27 " 5" pipes

Reopened Nov.
Closed Nov. 29, 1893
P. Bonley, D.L.
Reopened July 29, 1942
Closed July 29, 1942
H. Grotta - D. - opened.
Reopened Nov. 14 1949
Closed Dec 30 1949
Dine #111 from #115 - 1/11/49
Cut at curb, 9.5
Plotted



Enters sewer 95.2 ft. W. of 8th n.e. W. of Dexter st. R. July 11/92

June 23/92

George N. Cummings,
20-22 Hudson St.
J. Frank Read, N.Y. Permit # 6756..

Opened June 24, 1892 5" pipes.
Closed " 28 " "

Reopened Jan. 18-1923

Closed " 19-1923

C. E. Riccitelli D. L.

Reopened - Jan. 16, 1937

15 Closed - Jan. 26, 1937

M. Cullen - New

Cellar Rattors - 5, 4" 82" L

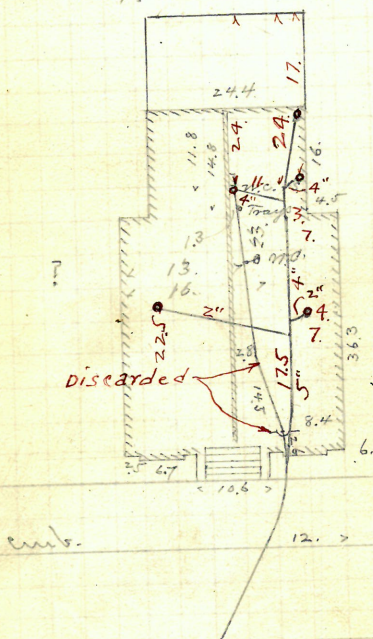
Cut at curb, 9 ft.

Reopened - Jan. 27, 1937

17 Closed - Closed - Jan. 27, 1937

F. Trotter - Relay - Op. siden

Plattina



Enters sewer 86. ft. W. of 2^d mch.
W. of Parade str.

June 24
/92

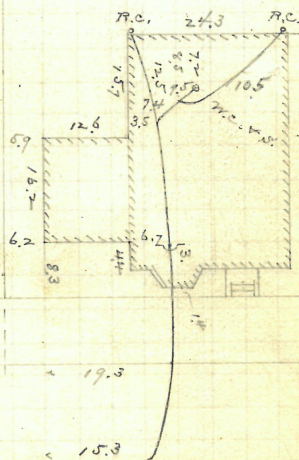
Jason A. Blackman, DL. 50 Hudson Dr.
Permit # 6762.

5" pipes.

Opened	June 28, 1892
Closed	" 28 "

Cut at curb, 10.1"
(as reported.)

Platted



Enter Sewer 58.6 ft. W. of 3rd m.
W. of Parade St.

IP 169-56

June 71
24/92

Corinne E. Field

wife of Silas E.

34 Hudson St.

Jason A. Blackman, Jr.

Permit # 6763.

Opened June 24, 1892.

Closed " 28 "

5" pipes

Reopened July 28-1923.

Closed " 28-1923

W. A. Loughery & Co.

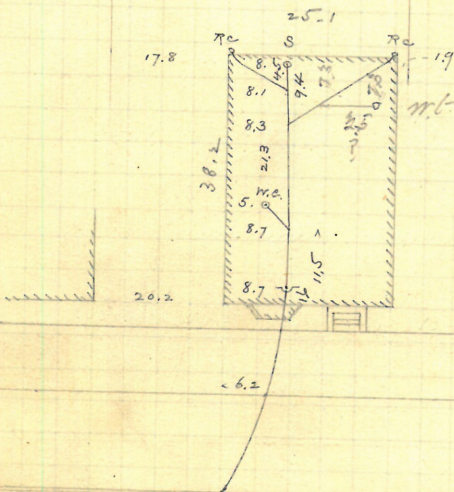
Cut at curb,

10.2"

(as reported.)

Platted

25



72 ✓✓

June 27/9

Rardon L. Remington #82

#7832 was N.C.

#153
cor. Pitman st.

J. A. Blackman, D.D.

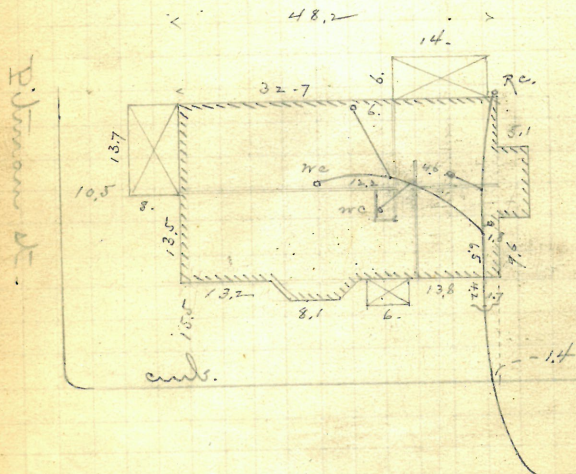
Permit # 6765.

Opened June 27, 1892

Closed July 1
1 or 2

5" wires

Cut at line of
curb, 11.8 ft. below
top of brick founda-
tion of house.

Plattid

Enter. near 66.2 ft. N. of
1st. m. N. of George st.

R. July 11/92

June 73
27/92

Engelhardt to Ostby

230

#228?

Waterman St.,
N.E. cor. Wayland Ave.

Frank Read, D.C.

Permit # 6768.

Opened June 27, 1892.

6" pipes.

Proposed - Apr. 2, 1925

Closed - Apr. 4, 1925

M. Mc-Nally - removed C.

Reopened -

Closed - May 17, 1935

Reopened - Mar. 12, 1939

S. Reinsant - Add Stacks

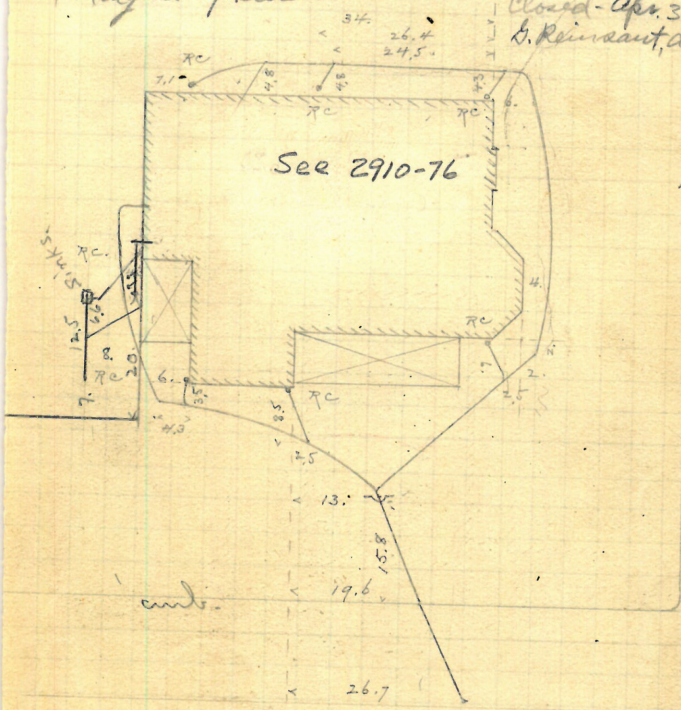
Closed - Mar. 14, 1939

Reopened - Mar. 11, 1935

M. Mc-Nally - cl. sp. sidew.

Closed - Apr. 3, 1935

S. Reinsant, add Sink



Waterman St.

Enters Wayland Ave. sewer
4.3 ft. N. of m.h. at Waterman Dec. 1937

June 28
92

Gabriele Ferri,
133-137 ~~St.~~ Spruce St.
P. H. Cassidy, D.L.

Permit # 6770

Opened June 28, 1892.

Closed July 2 "

Reopened & closed May 28, 1907

A. Aiello D.L.

Reopened Jan'y 28-1907

Closed " 31-1907

T. A. Perry D.L. - Cleanout

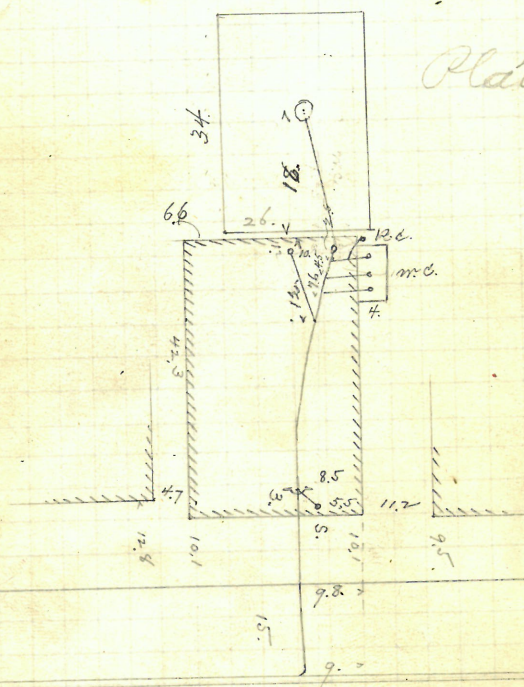
Reopened July 14-1920

Closed " 14-1920

G. Riccitelli D.L.

5" pipes.

Cut at curb, 9.8



Platted.

Enter sewer 155.6 ft. E. of R. July 11/92
1st. m. n. E. of Sutton St.

✓ 75
June 29/92

Matthew McDonald
P. H. Cassidy, D.L. 126 Spruce St.

Permit # 6771.
Opened July 5, 1892. 5" bit.

Closed May 5, 1892. 5" pipes.
" 8 " "

Refined Sept. 2-1893

Closest

" 2-1893 } Daniel M^r Stanley D. L.

Received & boxed Oct 17th 94

H. W. Goldrick D. L. ne. added

Received Nov. 31 98

Closed " 4" 98

L. Murray, D. L.

Reopened Sept. 4-1913

Closed " 6-19/3

J. T. Cannon D. L.



Enters sewer 56.2 ft. E. of R. July 11/92
w. in. at McCawby st.

Central Real Estate Co.
Clemente st.

L. S. Stevenson, D.L.

Permit # 6777.

Opened July 1, 1892.

Closed " 29-1919

Reopened " 31-1919

Closed " 31-1923

J. Holmes D.L. -

Reopened - Mar. 24, 1933

Closed - Mar. 24, 1933

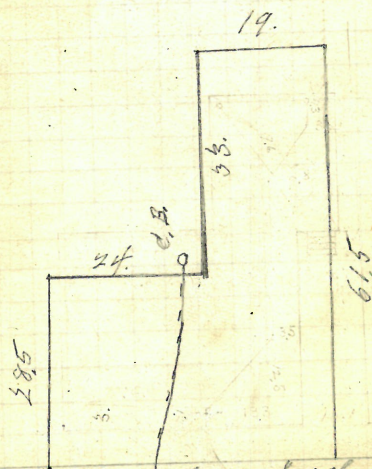
J. Reynolds - renew

Reopened Dec. 31-1923

Closed " 31-1923

W. J. Cairns D.L. -

Platted



cannot hold work

Old work from sewer to trap. See Bk 168-65

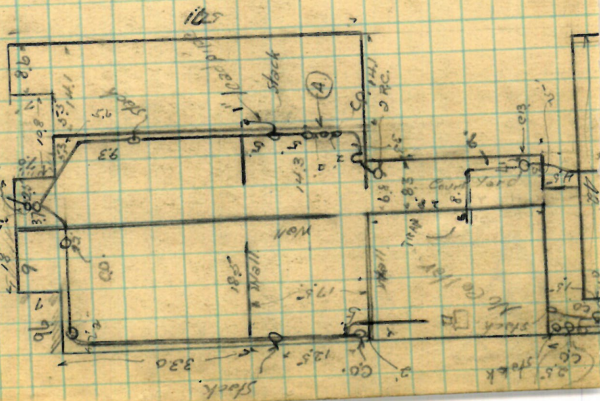
Enters sewer 42.6 ft. S. of
1st. m. S. of Washington st.

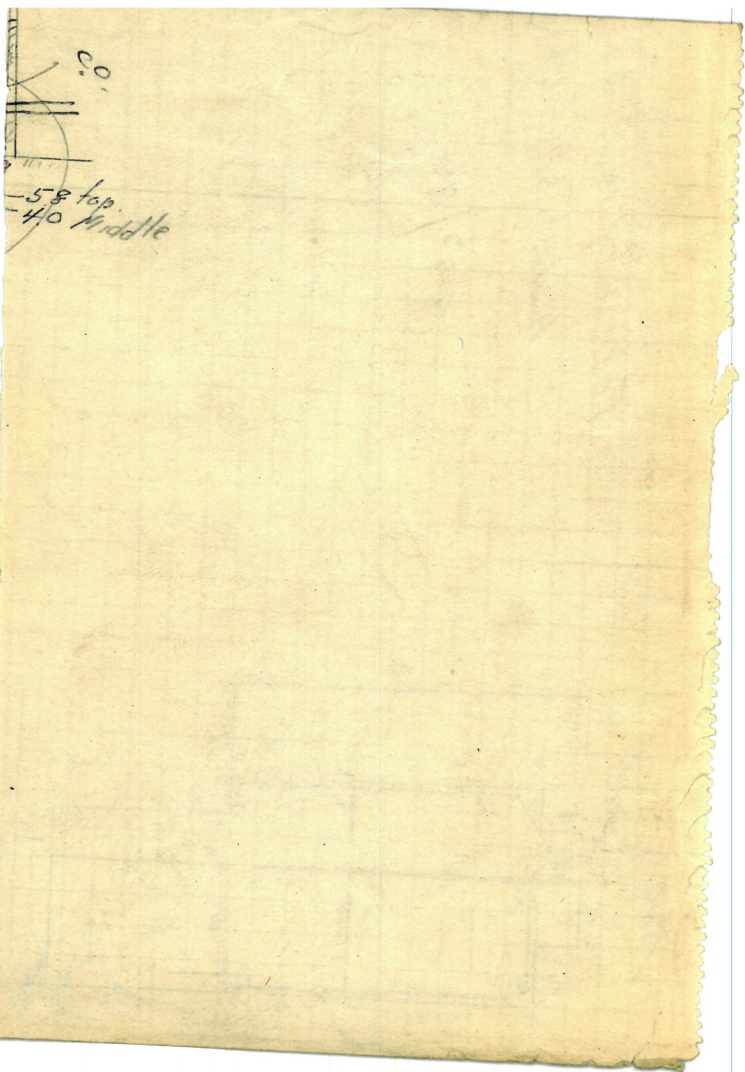
February 14, 1933

Attest Justin & AR Halloran

835/76

Adams Co







Elmwood St.

stock out 10 R

IP 169-56

June 30/92 77

Benj. F. Arnold and
Herbert E. Maine

51-53 Parade St

J. Frank Read, D. 1 NW Cor. 120th & Jackson St
Permit 6778.

Opened July 1, 1892.

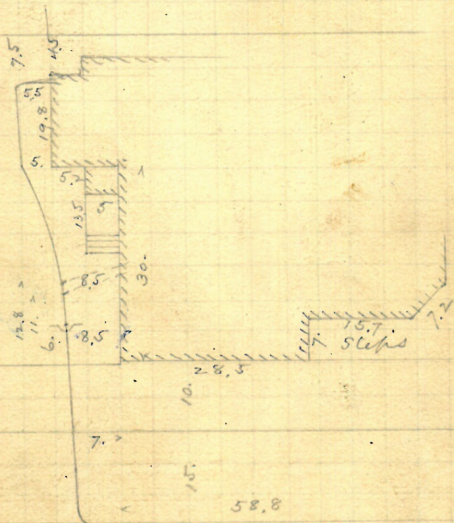
5" pipes.

Closed

Reopened Dec. 1-1916 - Curb at curb, 9.9, as
closed 1916 - reported by Cannon.

E. Gibbons Dec. 4. 1916 - 6 ft. in from
curb it is only 8.

Plattia



Enters sewer 64.6 ft. W.
of m.h. at Parade St.

78

#164-56

June 30
93Benj. F. Arnold and
Herbert E. Maine,
#11 Hudson St.

J. Frankel Read, D.L.

Permit #6779.

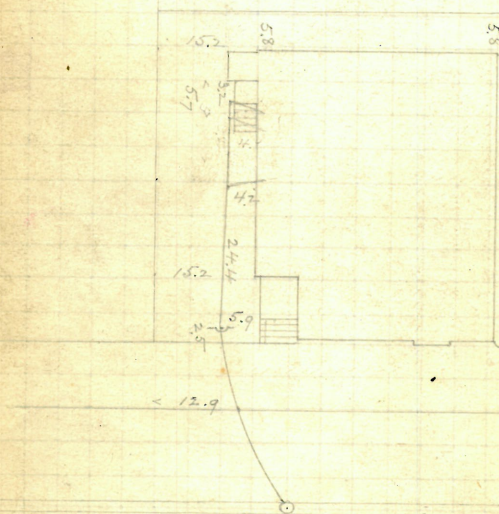
Opened July 15, 1892.

Closed " 16, "

5" pipes

Cuts at curb, 9.45

Platted

Enters sewer at 2^d m.h.
W. of Parade St. (Cut in.)

✓✓ July 79
1/92

6. L. H. Pitt, Atty.

#7-9 Walnut St., E. Cor. Shinko
(Walker St. sewer.) alley.

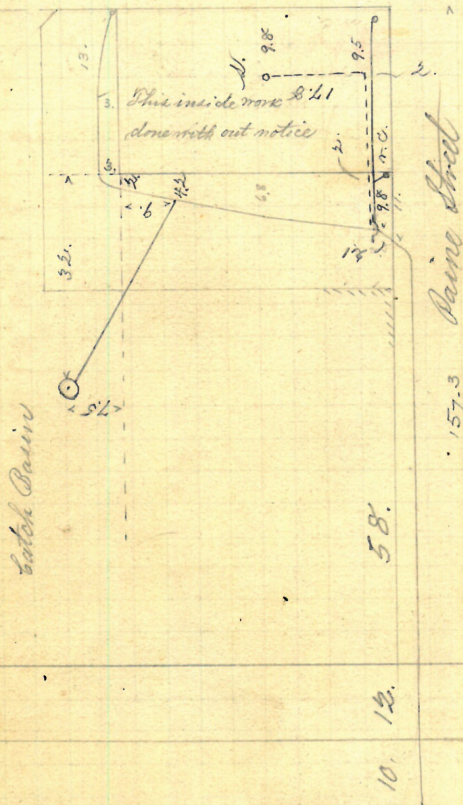
Jason A. Blackman D.L.

Permit # 6785.
Opened July 2 1892

Opened July 2, 1892
Closed " "

Walnut St.

Cut at ends
9 ft.



Reopened May 16th 96

Closed May 18496

J. A. Blackman. L.

Received Apr. 12-1915

Closed " 12-1915

W. G. Hackford. L.

Plotted

Walnut St plan
+ Walker in 4

Reopened June 15-1916

Closed 11 1916

J. George L. Clemons

Empire Street

inter seuer

10.8'

H. N. 82

0. m. N. of Westminster St.

GONE

July 2/92

Opened July 5, 1892.

Permit #6789.
5" pipe.

Closed
Reopened May 15-1942

Closed 11-17-1922-

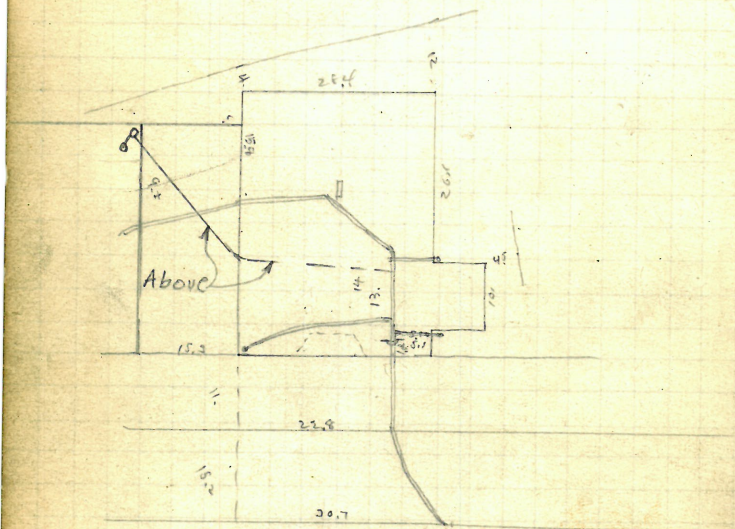
A. Biello D. L. - Clemonok

2, Respected - Feb. 21, 1944

121 Closed - Feb 23, 1944

R. Bush - Add above

Plotted



Enters sewer 122 ft. N. of
mtn. at Abbott st.

Caroline W Farnum
73-77 ~~65-69~~ Putnam St.

W.E. Sherman D.L.

Permit 7528

Open March 24, 93.

Reopened Aug. 14-93

Closed Aug. 15-93

Reopened July 24-1915

Closed 11/25-1915

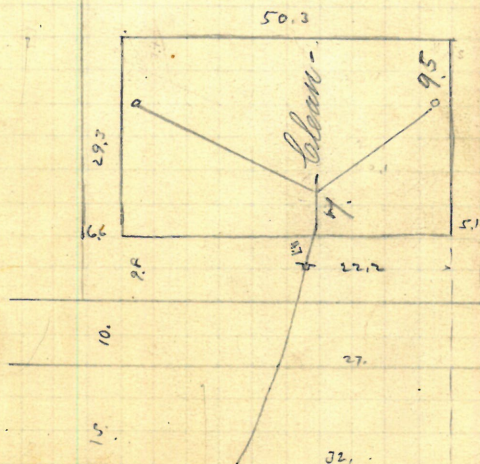
J. Cannon D.L. - Plotted.

Reopened Jan. 13-1923

Closed 11/19-1923

A. Kella D.L. - Cleanout

Clean Out.



Putnam St.

Enter sewer 59.8 ft y M.H. at Summit,
69.6 S. of 2d m.h. S of
Airhurst St.

REMOVED

July 7/92

Leander Chase,
 48 Dodge St.
 Chas R. Blackman, D.L.

Opened July 8, 1892
 Closed "

Permit #6797
 5" pipe.

Reopened Aug. 26-1901

Cut at curb, 10.5

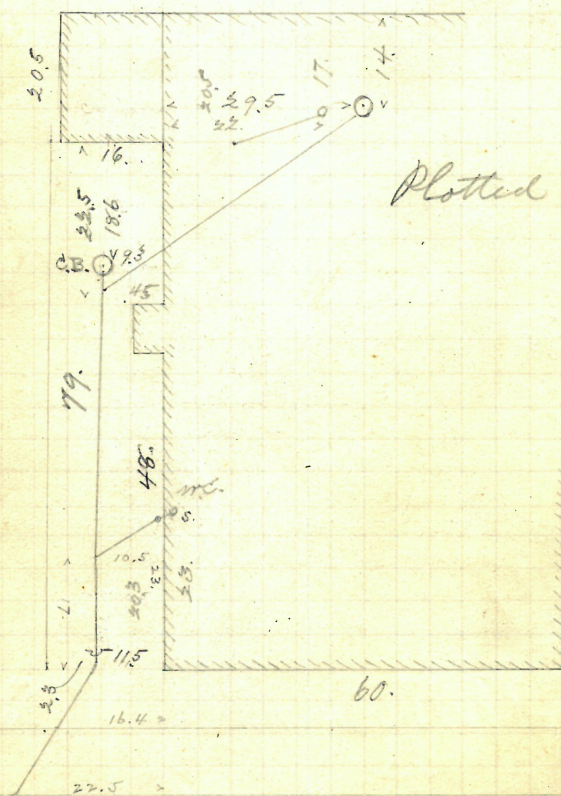
Closed " 29-1901

Reopened Jan'y 23-1923

J. H. Lyons D. L. -

Closed " 23-1923

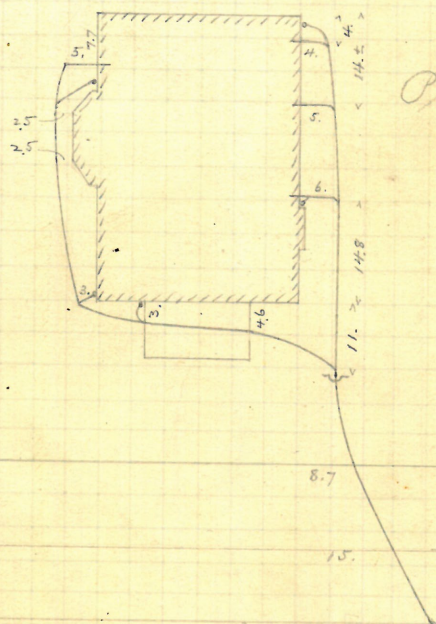
J. H. Veech D. L. -



Enter sewer 71 ft. N. of 1st. m. h.
 N. of Cranston St. - (Cut in.)

July 83
9/92

Francis W. Carpenter
J. Frank Read, Jr. Angell st.
Opened July 11, 1892 Permit # 6799-
Closed " 15, " 6" pipe.
Cut at curb,
10.3



Enter near 84. ft. E. of 1st. m. h.
of Brook st.

July 11/92

Dennis Burke,
#18-20 ~~13-19~~ Dale st.
P. H. Cassidy, D.L.

Permit # 6802

Opened July 11, 1892

Closed

" 14 "

Reopened Aug. 14 1902

Closed " 15-1902

A. Giallo D. L.

Reopened May 16-1922-

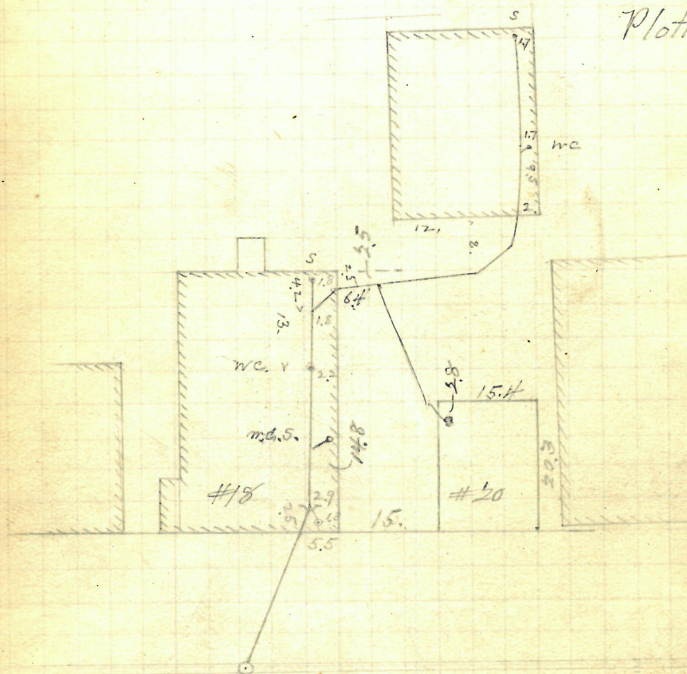
Closed " 16-1922-

C. E. Riccitelli D. L.

5" pipe.

Cuts (8 ft. out from
b. l.) 13 ft. below
level of top of house
underpinning

Plotted



Enters sewer at 2' m.h. S. of R. July 20
W. Exchange st.

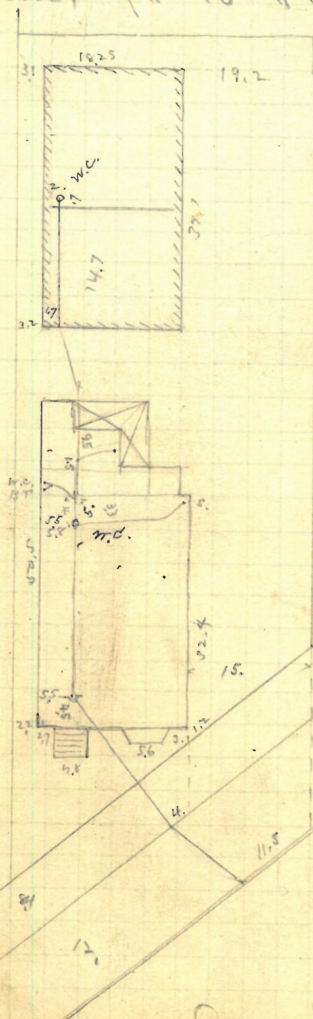
✓ July 85
11/92

Mary A. O'Brien
P.H. Cassidy St. #296 Knight St.

Permit # 6803
Opened July 14, 1892. 5" pipe.
Closed, " 18 " "

Cut at curb 10.4
Reopened Aug. 26-1911
Closed " 26-1911
Fitzpatrick & Co.

Plotted.



Enter sewer 6.4 ft. N. of 2 m.h.
E. of middle of ~~Tr~~ at Washington St.
J. R. July 20/92

July 12/92

Hby O. Angell

4238 246 Cranston st.
E. cor. Gilmore.

D. Holmes Ho., D.L.

Permit # 6807.

Sighted July 13, 1892

Closed

" 18, "

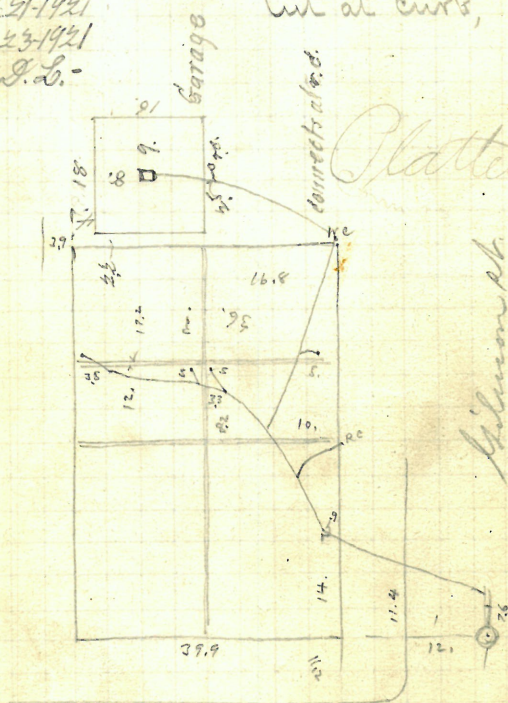
5" pipe.

Cut at curb,

Reopened Sept 21-1921

Closed " 23-1921

A. Berardinelli I. L.



Cranston st.

Enter sewer through branch into
Gilmore st. at 76 ft. S. of m.h.

July 15¹/₂ 92

R. H. B. Gardiner, ²⁹⁴ ~~212~~ Governor St.
 A. P. Barney D.L. Permit #6812

Opened July 15, 1892.

6" pipe.

Closed " 19 " 1918

Cut at curb, 10.

Reopened Aug. 22-1918

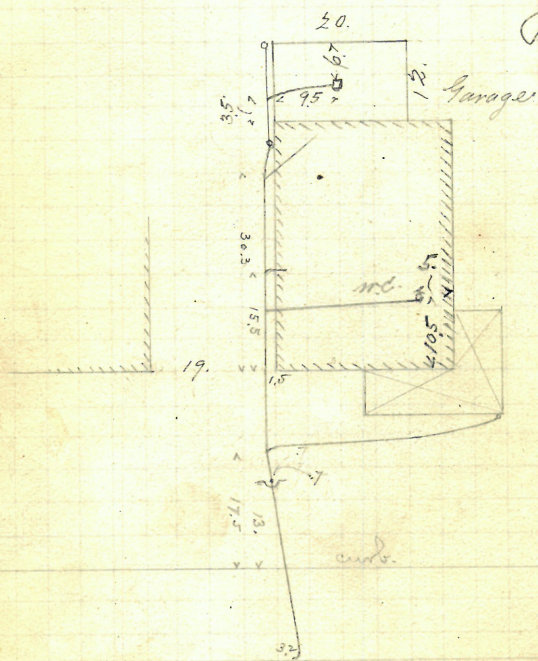
Closed " 24-1918

J. J. Messinger D.L.

Reopened Oct. 27-1919

Closed " 28-1919

E. Gibbons D.L.



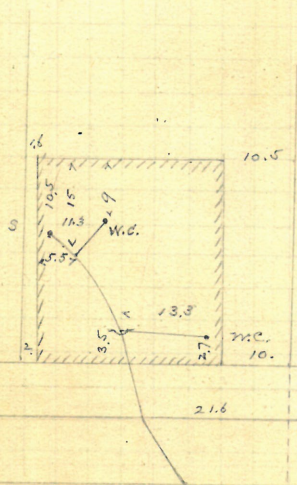
Platted

Enters sewer 56.5 ft. N. of
 22 m.n. S. of Angell St.

✓ July 18/92 89

John E. Lyons, 16 So. St.
P. H. Cassidy, 57 N. Court Parker St.
Opened July 19, 1892. Permit # 6817.
Closed " 21 " 5" pipes.
Reopened Sept. 15 - 1893 Cut at curb, 10.
Closed Sept. 15 - 1893
Hugh McCalderick D. C.

Plattid



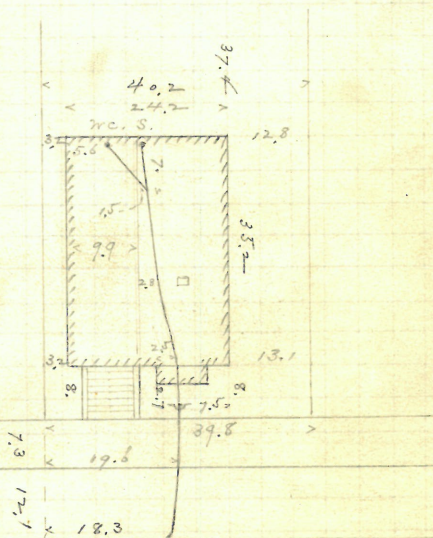
Enters sewer 88.4 f. N. of R. July 26
3d m.h. S. of Lexter st. 1892

90 ✓

July 19/92

James H. McGowan
John J. Deignan, D.L. Permit #6820.
Opened July 20, 1892. 5" pipes
Closed " 22 " Cut at curb, 10.5

Plotted.



Enter sewer 171.6 S. of
m.h. near Hedley st.

R. July 26/92.

July 22/92

Evelyn W. Howell

#244 Brown St.,

N.W. cor. Halsey.

J.W. Furlong, D.L.

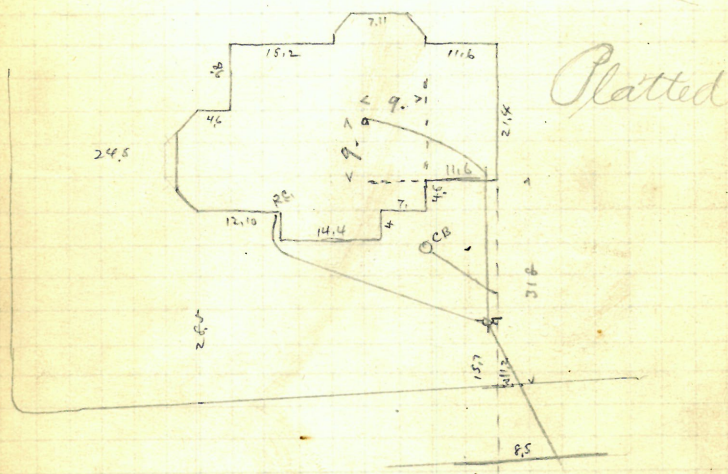
Permit # 6832.

Opened July 27, 1892

Reopened Dec. 26-1911

Closed " 28-1911

J.C. Miller D. L.



Enters sewer 95.1 ft. S. of
1st. m. h. S. of Hidden St.

July 23/92

Sarah H. Gray,

95 Butler ave.

J. Frank Read, D.L.

Permit - #6838.

Opened July 25, 1892

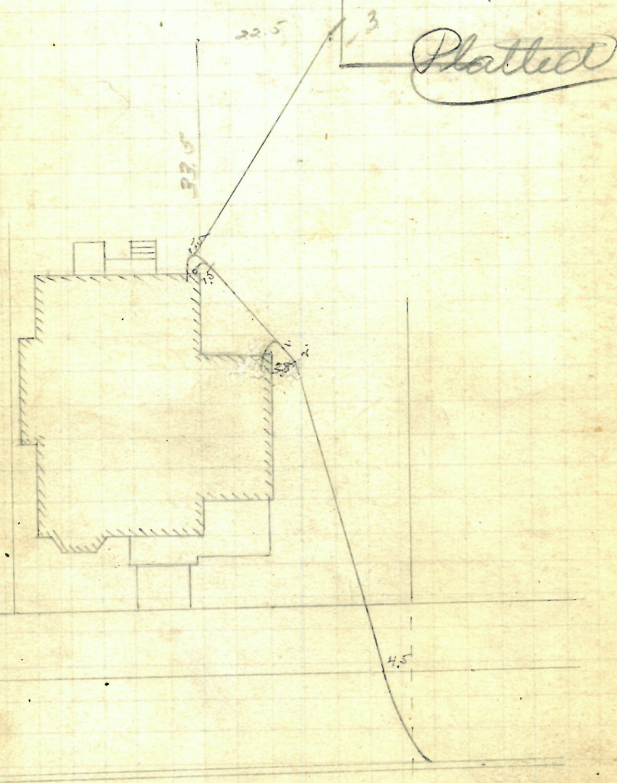
Closed " 27 "

Reopened Apr. 23, 1930

by

P. Loughan & Co.

5" pipe



Entire sewer at 2¹/₂ m.h. N. of
Living ave.

Estate Marshall B. Mead, + 193

Philip Case #1

68 Dorrance St.
S.E. cor. Middle "

D. Holmes Co. - D.C.

Permit # 6839.

Opened Jan. 31/93.

Closed Feb. 4, 1911

57" pipe

ADD NEW CELLAR BOTTOM

3" x 4" IRON

D.L.

J. T. O'NEAL

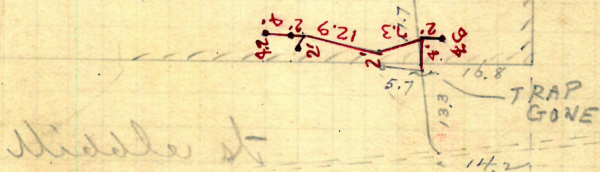
Platte 2.

OPEN 1P/15/69

CLOSED 12/3/69

Connects to upright
iron plumbing.

220000



Enters sewer in Dorraner dr.
rough private drain in Middle dr.
See Book 190-122.

See Book 190-122

July 23/92

James R. Hodge #174-178 Waybowl - St.
 Thos Phillips Co. Ill. Permit #6840.
 6"

Reopened to clean Apr. 3/93 - T.P.C. Ill.

Comm. 26/5 gals

Enters sewer 713 ft. W. of
 28. m. W. of Eddy st.

July 23/97

James R. Hodges
Thos Phillips Ho. #174-178 Weybosset st.
Permit #6841.

5"

Com 4th Oct.

Enters sewer 87.9 ft. W.
of 20 min. W. of Eddy st.

192

104 Valley St.

Permit 6821.

5" / inches

100

NEW BUILDING

cut at cuts, 7-0

OPENED 7/18/73

CLOSED 7/18/73

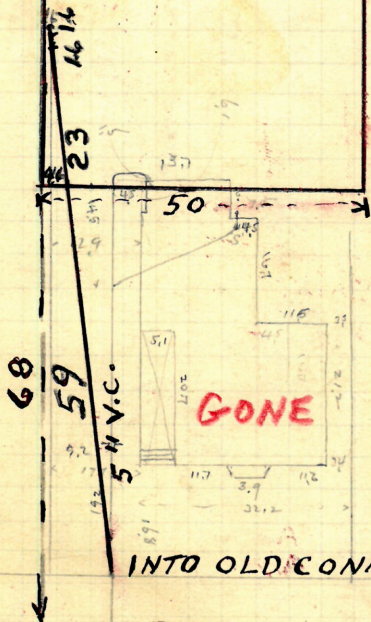
D. L. A. Ricci ①

NEW BUILDING

INTO OLD CONN.

INSIDE BY

R. COLÁLUCA



58.6

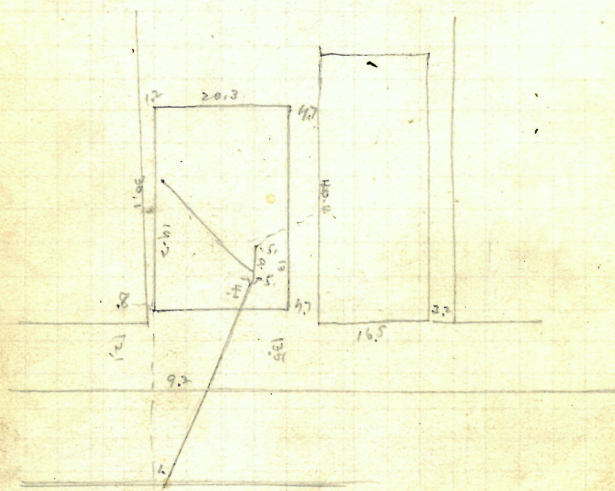
STORM M.H. AT INTERSECTION OF
DELAINE ST. AND VALLEY ST.

Enters sewer 153 ft. S. of 1st.
N.W. S. of Grove st.

July

James L. Field
 Chris. P. Brennan D.L.
 #146 Point str.
 Permit # 6829.
 5" pipe.
 Opened July 26, 1892
 Cut at curb, 7.8

Plotted.



Enter sewer 6.4 ft. W. of 1st m.h.
 W. of Parsonage str.

City of Providence
Fire + Police Station
1 Oakland St.

J. Frank Read, D. L.

opened July 26, 92

closed " 30, "

Reopened Dec. 28, 97

Closed Jan. 11, 98

J. H. Read D. L.

Permit # 6834.

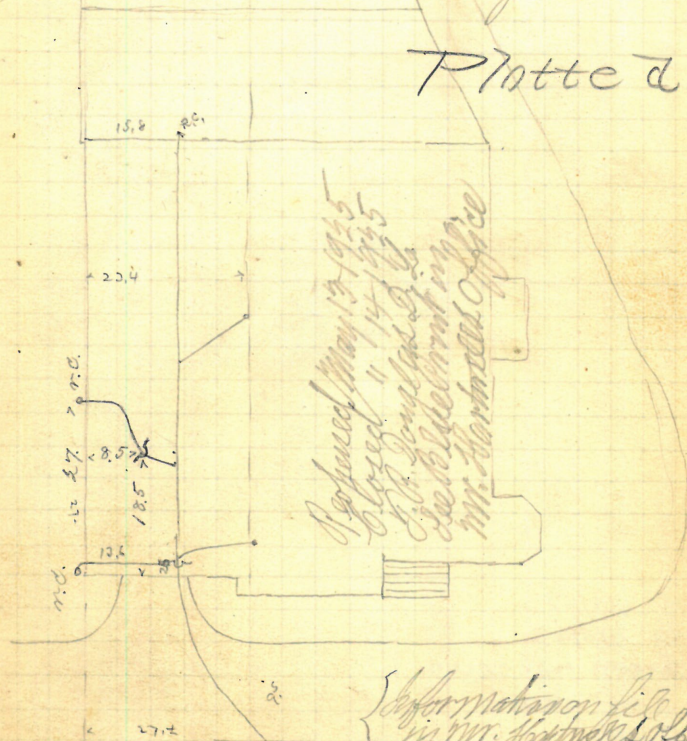
Cuts 12,5

Reopened May 1, 1925.

Closed " 5, 1925.

J. H. Read D. L.

Plotted



{Information file
in Mr. Harwood's office}

Enters sewer 44 ft. W. of
m.h. at Public St.

July 26/92

Henry Fletcher,
B. Brady, D.L.

19-21 Wood St.

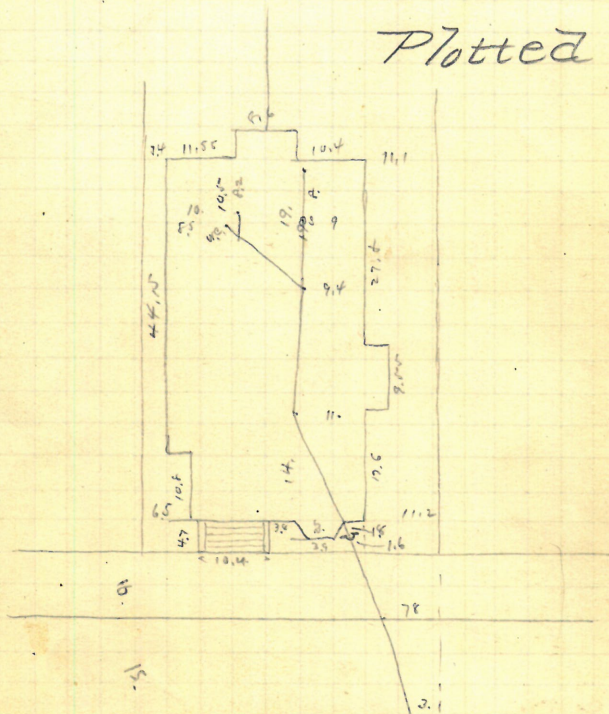
Permit # 6846.

Opened July 28, 1892.

5" pipes.

Cut at curb, as re-
ported by D.L., 10.3

Plotted



Enter sewer 77.25 ft. W. of
2d m.h. W. of Parade St.
cut

July 29

Charles H. Reed,

J. Frank Read, D.L.

93 Butler ave

Permit # 6847

Opened July 27, 1892

Closed " 28, "

Reopened Aug. 17, 94

Closed Aug 17, 94

L. C. Stevenson D.L.

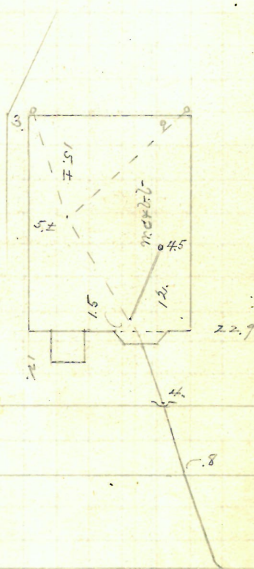
5" pipe

Cut at curb level

10.7 +

to top of brickwork

Platted



Enter sewer 162.4 ft. N. of
1st. w. N. of Spring ave.

II 169-55

105
July 28
92

Joseph York + wife
228 Irving ave
J. Frank Read, A.L. Permits # 6852.

Opened July 29, 1892

Closed

Reopened - Mar. 3, 1944

Closed - Mar. 9, 1944

S.W. Tapp. - clear

Rocks - open sidewalk.

30, "

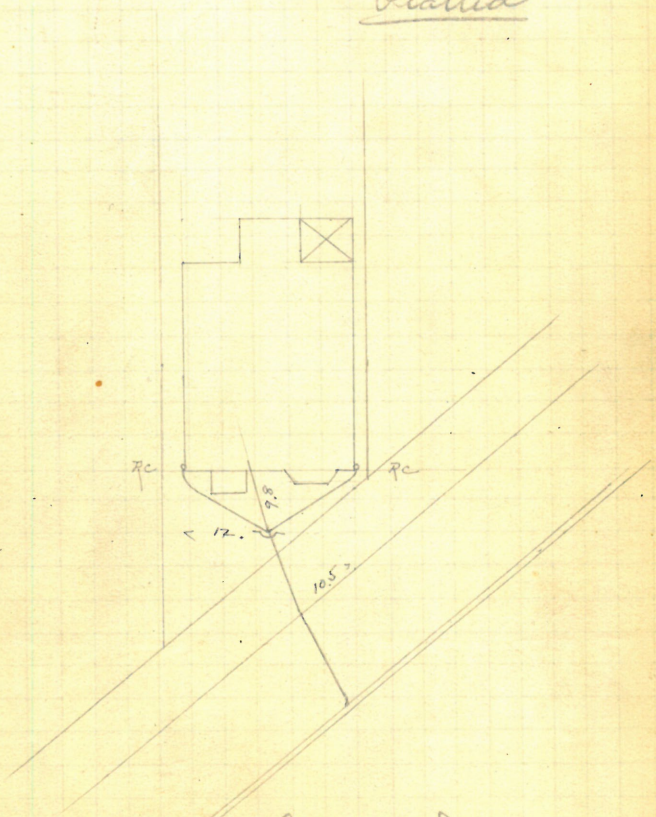
5" pipes

cut at curb,

10.5 ± as reported.

Interior work not taken.

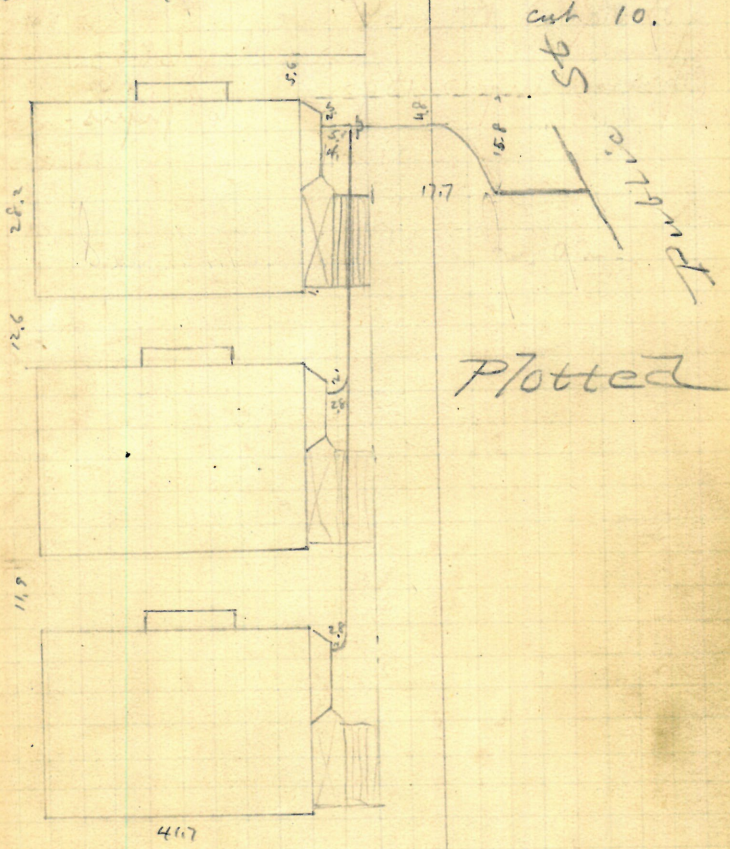
Platted



Enters sewer 49.8 ft. E. of the 1st. m.n.,
E. of m.n. at junction with Butler ave sewer

George A. Youlden
 5-13 Dabot St.
 John Dean D.L.

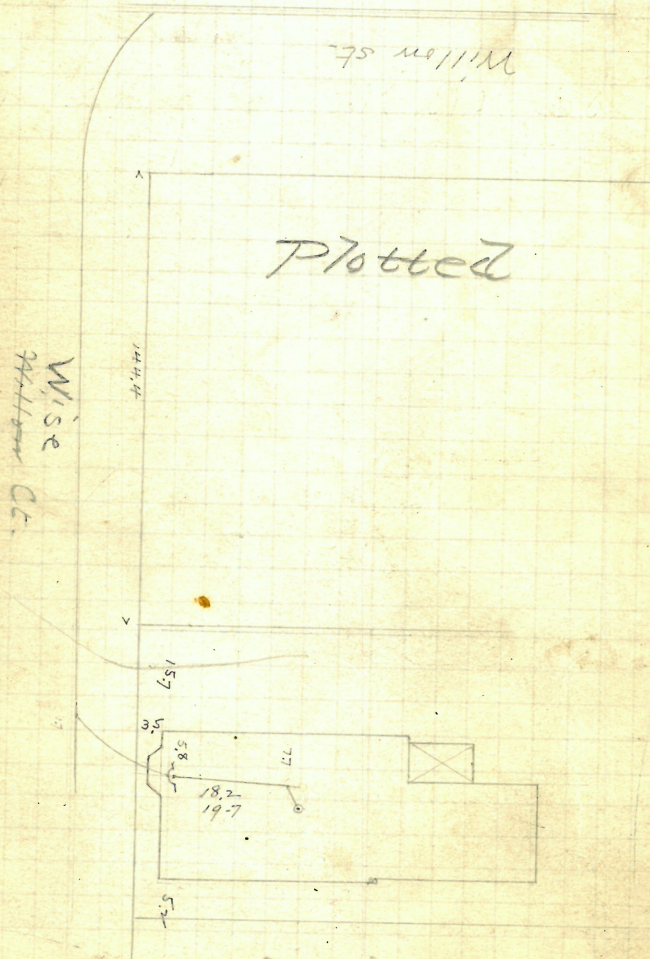
Permit 7499
 cost 10.



Enters end of sewer built from
 into Dabot St.
 Dabot St.
 Public St.

GONE

Mary Potter Est., 20 Willow St.
 #34 (Willow st. sewer)
 J. F. Read, D.L. Permit #6882
 Opened Aug. 12, 1892. 6" pipes.



Enters sewer 88.5 ft. W. of
 3d n. W. of Parade st.

Burns, J. G. & wife,
 #622 - 841 Potter's Lane,
 #706-710 Cranston St.

D. Holmes Co. 57

Permit # 6883

Opened Aug. 13, 1892.

Closed " 18, "

5" pipes.

Reopened June 26-1906

Cut at curb, 10.5

Closed " 26-1906

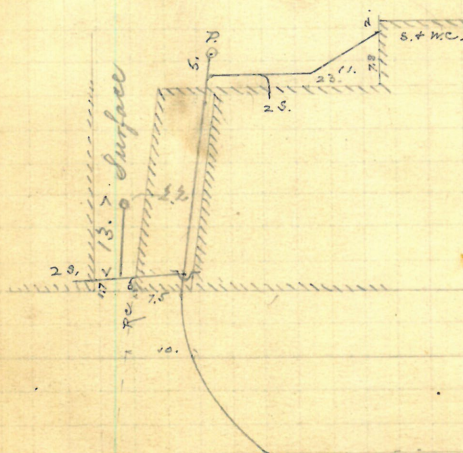
Reopened Mar. 20/29

Geo. H. Lewis D. C. -

Cloud

M. M. Nally & L. Chan-

Plotted



Enters sewer 51. ft. S. of W. r.
 n. n. S. of Cranston St.

Aug-11
19

Mary Fox
John Keogh, D.L. 64 Hyatt st.
Permit # 6884.

Opened Aug. 22, 1892. 5" pipes.
Closed " 25 "

Reopened & closed Aug. 21, 98 Cut at curb,
at Fairway D. L. 11-ft.

Reopened July 21-1909

Closed " 21-1909

Geo. F. Lewis D. L. - Cleanout - Platted

Reopened Sept. 1, 1927

Reopened Sept 7, 1934

Closed " 1, 1927

Closed Sept 8, 1934

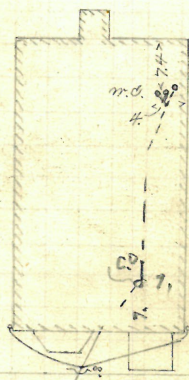
Jean. Latu D.L. (Cleanout) F. Trotto - clear - open sewer.

Reopened - Aug. 5, 1936

8/3 Closed - Aug 6, 1936

S. Raczkowski - Clear -

Rock - add C.O.



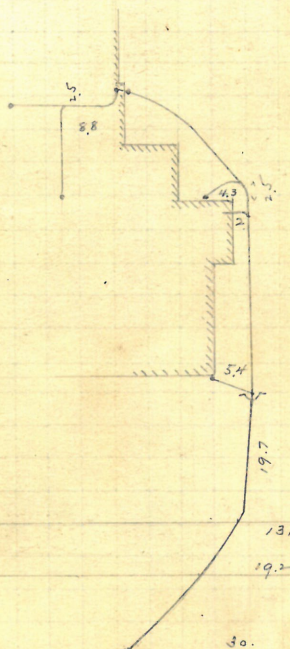
5. curb.

3.

Enters sewer 246.7 ft. N. of
5th. m.h. N. of Manton. av.

Francis W. Reynolds
 J. F. Read, D.L.
 73 Mauney st.
 Permit # 6886.
 Opened Aug. 15, 1892.
 Closed " 19 " 5" pipes
 Cut at emb. 103,
 as reported.

Platted



Enter sewer 92.1 ft. E. of
 20 m.h. E. of Bucklin st.

~~REMOVED~~ GONE

Isaac M. Lincoln,
J. Frank Read, Jr. 38 Jefferson St.

Opened Aug. 15, 1892 Permit # 6887
Closed 27 " 6" pipe

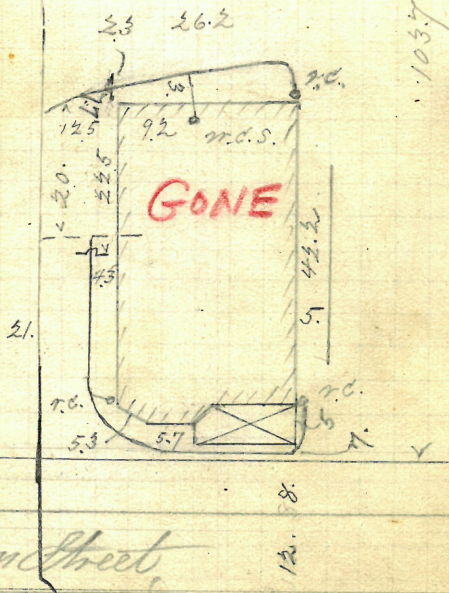
Reopened & closed Oct. 23-29-1900 32.2 cut at curb, 0
M. Greeley & Co. 13. reported by agents, 11.1
m.s.

See large ~~draw~~ **GONE** in brown paper

Reopened April 9-1901 32.2
Closed " 13-1901
A. W. Colaneri & Co. ~ 35. Drawer 69-A7.

Reopened Oct. 23-1900
Closed " 29-1900
M. Greeley & Co.

Plattest



Jefferson Street

Entire section 83.8 ft. S. of ...
2d m. S. of Ohio St.

Anna L. Jackson +
 Mary J. Potwin
 # 10? Carter st.
 J. A. Blackman, D.L.
 Permit # 6891.
 Opened Aug 16, 1892.
 Cloud " 19, " 5" pipes

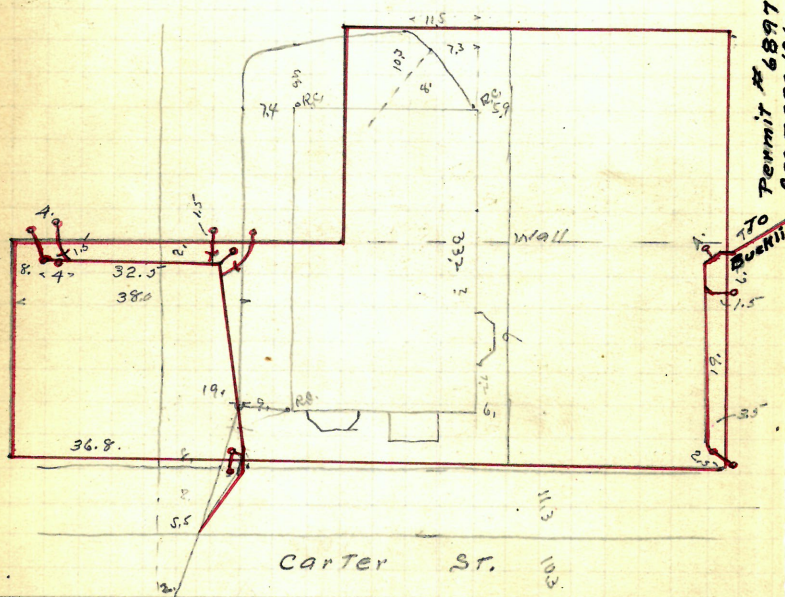
Reopened 7/27/56

Closed 7/27/56

D.L. Geo. Reinsant. New bldg.

cut. 10 ft.

Platted.

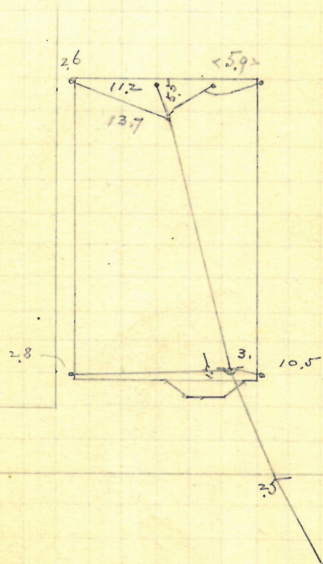


Enter sewer 10.7 ft. N. of
 3' N.W. of Greenwich St.

✓ Aug 121
 15
 92

Thomas ~~Larmody~~, 91 Julian St.
 J A Blackman D.L.
 Permit # 6892.
 Opened Aug. 16, 1892.
 Closed " 19, " " 5" pipes
 Cut at curb, 10.5

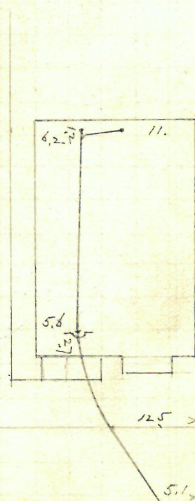
Plastics



Enter sewer 162.9 ft.
 of m.h. at Kossuth St.

Aug 15
9

James Langley, Jr., 52 Ford St.
 W.E. Sherman, D.L. Permit #6893
 Opened Aug. 17, 1892. 5" pipe
 Closed " 18 " "

Platted

43.9
 Enters sewer 47.1 ft. W.
 of 3d. m.h. W. of Baxter St.

Aug 16/92

Mary W. Buffum
#76 Hm

#761 Humboldt ave
N.W., cor. Wayland ave

J. F. Read, Dr.

Permit # 6894.

Opened Aug. 18, 1892. Terminal #689
Cloud " 20 " 6" pipes

Closed

Respected Nov. 17-1915

closed " 1915

Cult alt. cult.

104

J. Dearyd. S. Cleonout

Plattia

Entire sewer 40.9 ft. S. of
2^d m. N. S. of Elton st.

✓ Aug. 17/92

James F. Johnson
 9th & 11th Willow St.
 J.F. Read, D.L. (sewer)
 Permit # 6896.

Opened Aug. 18, 1892

Reopened & closed Aug. 12, 98

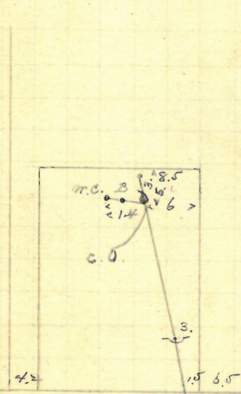
Wm. E. Sherman D. L.

Hart says permit was taken out for
 lumber and he knows very little about it

By Act 28/32
 Chas. L. L.

"Come Sept 22"

Plotted



Enters Sewer 68.0' South of M. Hole
 at Willow St.

Enters sewer through
 private drain of Est. of Mary Potter

126^v

P 162-47

Aug.

Albert L. Anthony

13 Brady, D.C.

Bucklin St.
E. cor. Carter St.

Opened Aug. 18, 1892.
Closed " " "

Permit # 6897.

5" pipes

Cut at curb,
10. +

Permit # 6891

To Carter St. See page 120

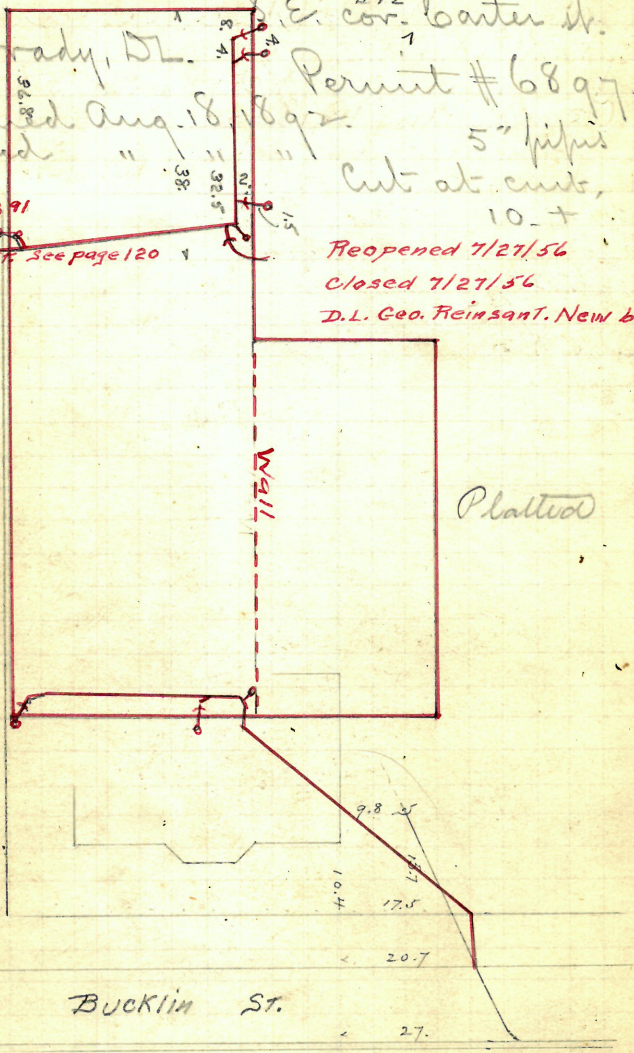
Reopened 7/27/56

Closed 7/27/56

D.L. Geo. Reinsant. New bldg

Carter St.

Platted



BUCKLIN ST.

Enters sewer 77.6 ft. N. of
1st. m. N. of Redwing St.

Extension of Permit #8.

Central Real Estate Co.

Mathewson St.

J. A. Blackman, D.L.

Opened Aug. 26, 1892 6" pipe
Closed " 27 "

Reopened - Sept 18, 1934

Closed - Sept 18, 1934

2 Myra - 3" I.

Reopened - Oct 24, 1934

Closed - Oct 24, 1934

1 Myra - 2" I.

Cut at ends,

8.1

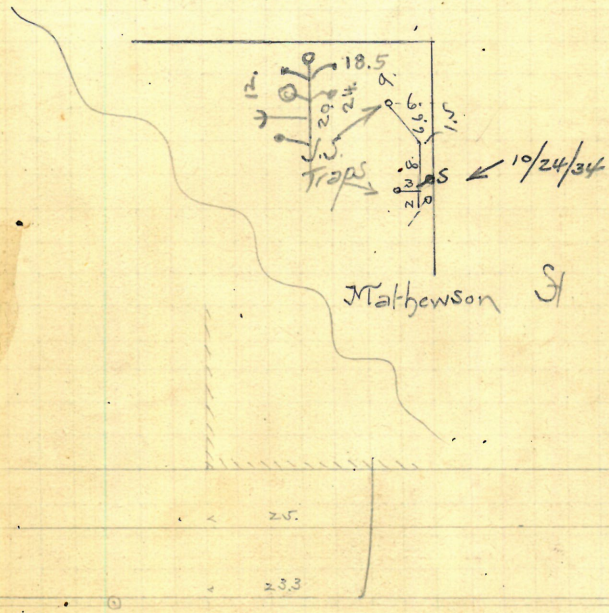
Reop Aug 8/50

Clos Aug 8/50

W. Cuddigan D.L.

Aug 16/50

Plotted



Enter sewer 37.5 ft. S. of 1st. corner
of Washington St. (cut in.)

GONE

Aug. 18/92

Emmie W. Chan, wife of Benj. G.

J. Frank Read D.L. #327 #327 Bucklin St.

Permit - # 6900.

Opened Aug. 23, 1892. 5" pipes
Curb at curb,

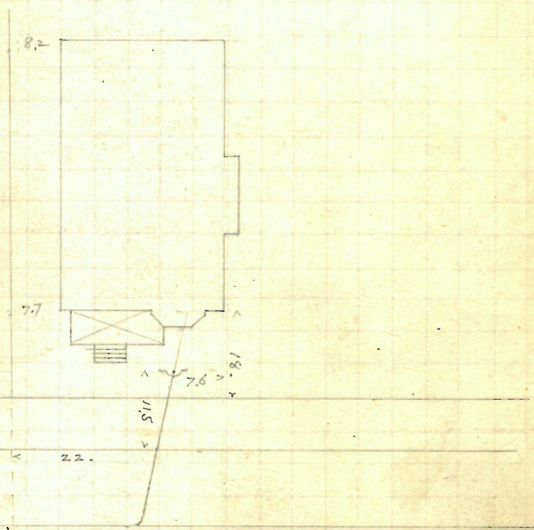
Closed Feb. 20/30

M. Lyons & A. Chan

2/1 Reopened - Feb. 24, 1943

2/2 Closed - Feb. 25, 1943

P. Mangione - Cl. of Lidon.

PlattedEntire sewer 52 ft. N. of
3d. mh. N. of Earl St.

Elizabeth Kempl
J. A. Blackman, Dr. #603 Keene St.

Opened Aug. 20, 1892.

Reopened June 10-1903 Cuts at cuts.

D. A. Perry D. L.

2, Reopened - Dec. 8, 1941

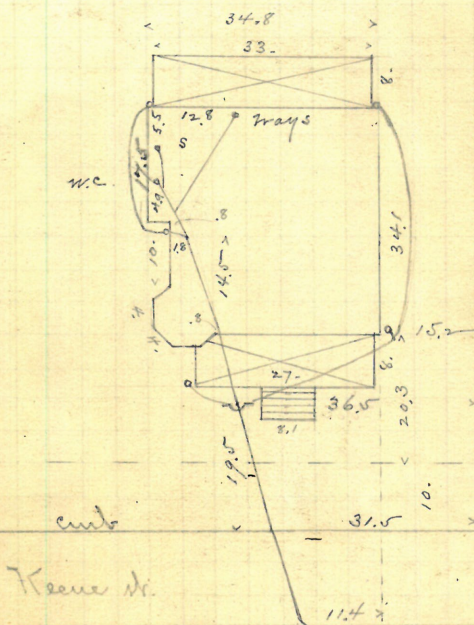
18 Closed - Dec. 8, 1941

P. Balentine - Renew W.C.

Received June 28 1926

Bluse d. 11 29. 1926

E. Gibbons D. L. - Clemons



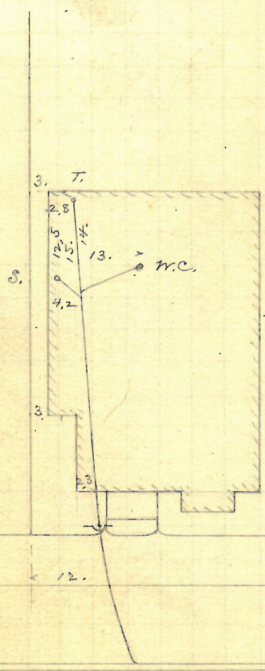
Enters sewer 66.7 ft. W.
20 m. N. W. of Thayer st.

133
 Aug. 19
 92

Julia S. Farrow, 50 Hanover St.
 Wm. E. Sherman, D.L.

Opened Aug. 20, 1892 Permit # 6903.
 cloud 22" 5" pipe.
 Reopened Mch 25-1908 Cut at ends,
 closed " 25-1908 10.1 as reported.
 J. Deary D.L. - Cleanout.

Plattist



Enter sewer 102.6 ft. W.
 both m.m. W. of Dexter st.

Aug 21
92

Michael Foley

#130-132

106 Transit St.

J. W. Furlong, D.L.

Permit # 6904

Opened Aug. 22, 1892.

Closed " 23, " * 6" pipe

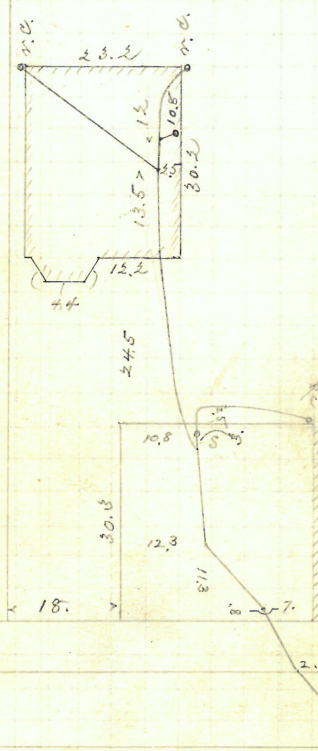
Reopened Apr. 10, 95, " Cut at curb,

Closed " 11, 95

7.75

J. M. McLean D. L.

* 5 inch (?)



Plotted.

P 167
15Enters sewer 24.8 ft. W. of
2 m. W. of Porrook St.

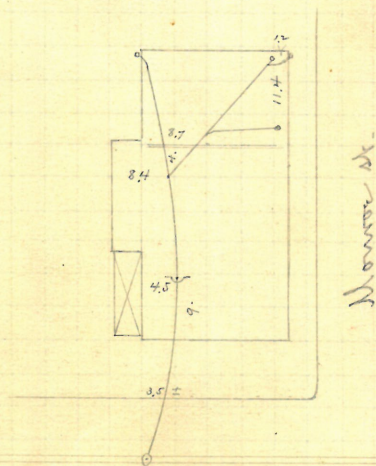
~~REMOVED~~

✓ 137
Aug. 20 / 92

Hens. of Ephraim B. Moulton,
24 Lester St.,
& cor. Monroe St.,

J. A. Blackman, D.L. Permit # 6907.
Opened Sept. 7, 1892. 5" pipes
Closed " 9, " " Cut at curb 10.7,
as reported.

Platted



Enters sewer at 1st. m.h.
S.W. of Saunders St.

Hair of Ephraim Boulton,
30 Lexington St.,
- cor. Monroe St.

J. A. Blackman D.L. Permit # 6208

Opened Sept. 8, 1892.

Reopened July 9-1923

Closed 11-1923

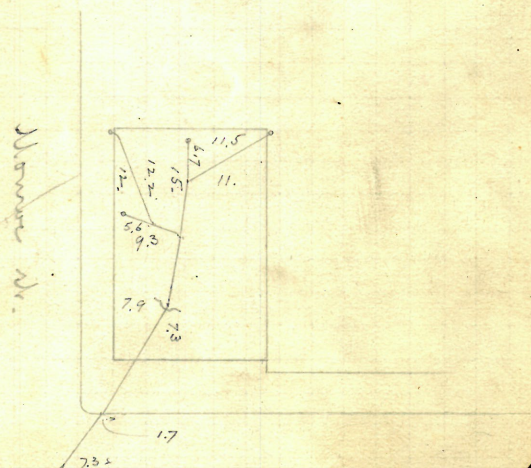
A. G. I. Ward - Elmout

5" pins

Cut at curb

10.9 -

Platid.



Enter section 37.5 ft. S.W. of
1st. n. h. S.W. of Saunders sk.

REMOVED

139
Aug 20
92

Hins of Ephraim B. Norton
123 Parkers st.
J. A. Blackman The Book House

Permit = 6909.
 Opened Aug 24 1892 - 15-11

Closed Sept. 3 " 6" paper

Recd - Apr. 27. 1933

At. Apr. 27. 1933

P. Laperre

Cut at street

Surface 10.5

165

Reopened Nov. 14-1911

Closed " 15-1911

J. Deary L. L.

Reopened 8-1924
Closed " 8-1924

R. S. Bush, Jr. L.

at an angle. 2.

11/17 Reopened - 11/18/41

Closed - 11/19/41
P.A. Keyes - Cl.

1

Reformed Film 27-1924

Closed 11/25/1924

Ha. Collison D. D. -

old W.C.s
abandoned

Plotted

218718A
New Brunswick

Flare winged and line
black and for further use

Alfred - Nov 22. 1934
F. Jacoria - clear

Received Feb 8 - 1924

6. 10. 1924

A. L. Carey, Secy.

§ 1. The following is a list of the names of the persons who have been appointed to the various offices of the State of New York, for the year 1880.

1st. m. h. E. of Saunders st.

Aug 20
92

Mary A. Billings
 Thos. Phillips Ho., W.L. 18 Fairbank St.
 S.E. cor. Mohawk Alley
 Permit 6910
 Opened Aug. 22, 1892.
 Closed " 25, " " 5" pipes
 Reopened Nov. 29, 1937 cut at curb,
 " Closed - Nov. 30, 1937 9.4
 29 A.C. Guenet - Alter
 Cellar Bottom

Platted



Mohawk alley

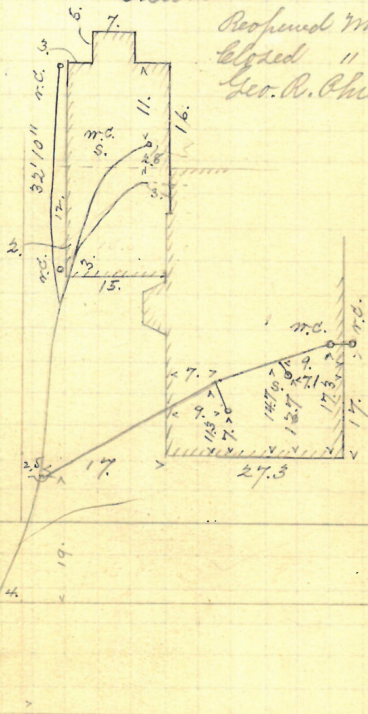
Enters sewer 46.1 ft. N. of
 W. m. E. of Mohawk alley.

141
Aug 20 / 92

120
 9.
 Coray Matteson
 John Keogh, D.L. 122 94 Doyle ave
 Permit # 6911.
 Opened Aug. 23, 1892.
 Closed " 29 " 5" / 1/2 pips
 Reopened Nov. 25, 99
 Closed " 29, 99 cut - at - cut -
 Geo. R. Phillips D. L. Relay -
 closed, Jan. 20 - 1907 9.2-

Plattner says 6'

Reopened May 1-1900
Closed " 3-1900
Geo. R. Phillips D.D.



Enters lower 98.1 ft. E. of
1st. m.h. E. of Camp st.

V¹⁴³
 Aug 22 / 92

Wm. H. Boyden Jr. & wife,
 #40 #41 1/2 Colfax St.,
 S.W. cor. of Burnside

W.E. Sherman, D.L. Permit # 6913.

Opened Aug. 23, 1892.

Closed " 24 " 5" pipes
 Reopened July 21, 1923 Cut at curb.

Closed " 24 1923 15.8 from top of

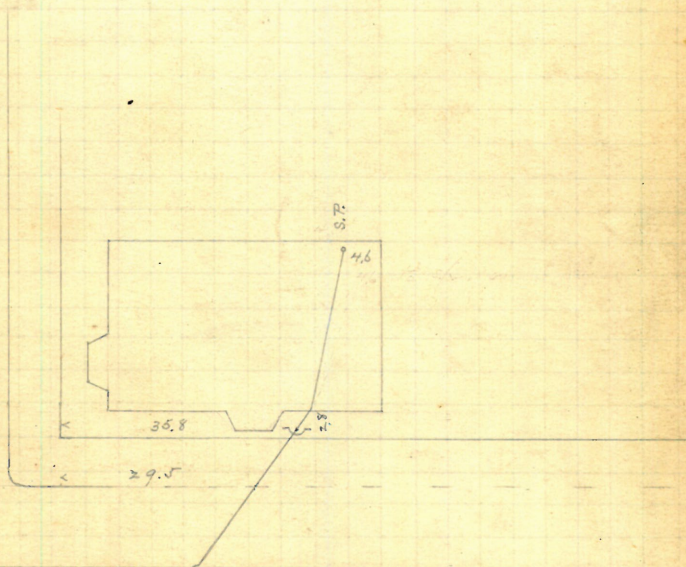
M. M. & M. L. S. Clamond back basement
 of house.

10/ Reopened - Oct. 31, 1935

30 Closed - Oct. 31, 1935 Reopened July 28, 1936

Mc Hally - clear Closed - clear
 T.A. Cummings - open sidewalk
Platted

Burnside St.



Enter sewer 138.5 ft. E. of 1st man.
 N. of Burnside St. (Measuring down
 the sewer.)

Aug 22 / 92

Clara K. Armstrong

wife of Walter N.

233 Irving Ave

J. Frank Read D.L.

Permit # 6914.

Opened Aug. 22, 1892

Chord

" 24, "

5" pins

Revised Mar. 21, 1932

cut at cut

blood 22

10.4

M. St. Leon St.

clean out

8. Reopened - Aug 13, 1941

¹³ Closed - Aug. 18, 1941

J. H. Mulvaney - Add 4" 03 I

Enters sewer 10 ft. E. of 2 m.h. E. of
m.h. at junction with Butler ave sewer

V. Vang 145
9-23
92

Wm. J. Hogg, D.L. S.E. cor. Orms Dr. ^{#68?}
Permit # 6915

Cloud " 26 " 6 pipe
 1st of 1949

Cut at cut
9.75

E. Di Mundo I. I.

Closed 114-1923

Ed. M. Mundo S. L.

Reopened Dec. 5-1923

Closed 11 8-1923

D. New D. L. -

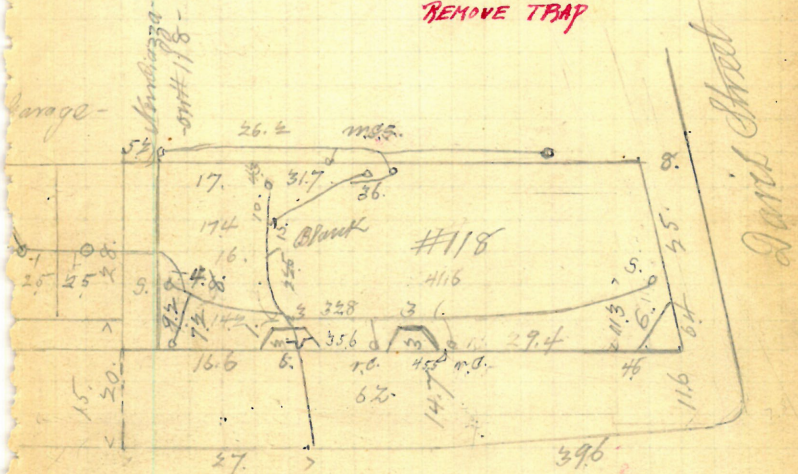
Plattid

REOPENED 2/21/58

CLOSED 2/21/58

D.L. P. MANGIONE

REMOVE TRAP



Omms Street

Enters lower 112.7 W. of
1st. mtr. W. of State Str.

Aug 23/92

Mary H. Feeley #1 Mulberry St.
 f. Frank Read, D.L. Nov 16 1892
 Permit 6912.

Opened Aug 24, 1892.

Closed

Reopened - June 20, 1934

Closed - June 20, 1934

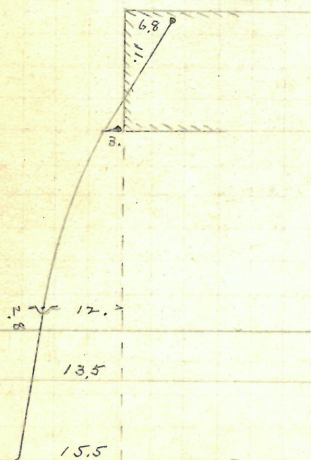
J. Cifelli clear raise vent

5' 1/2" in

Cut at curb

9-ft.

Platted



Cherry St.

Entire sewer 53.8 ft. S. of
 2d. n. h. N. of Cherry St.

147

Aug 24/92

Harriet J. Monry, 673-1 Colfax St.
N.E. cor. of Burnside
Wm E. Sherman, D.L.

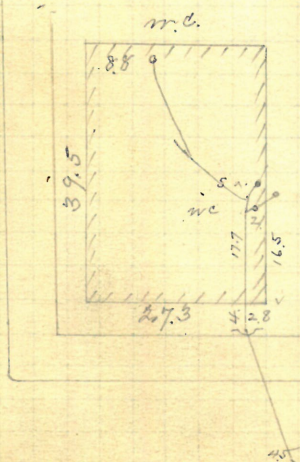
Permit #6917.

Opened Aug. 25, 1892. 5" pipes
Closed " 26, "

Reopened & closed June 4-1902. Cut, at 9 ft. out
from b.l., 16.4
W.C. Chadsey & Co. ~ 1 ft. below top of
brick foundation

Burnside St.

Platted 162-58



Enters sewer 153.15 ft. W. of
st. m. n. W. of Ocean St.

GONE

Aug 24
92

Wm. H. Miller,
#58 #200 Colfax St.
Wm. E. Sherman, D.L. Permit # 6918.

Opened Aug. 29, 1892.

Depth

" 30' "

opened Oct 7/92 at B. Colfax St. Cut at curb line
5" pipes
16.1 - below level
of top of brick found
ation of house.

Platted



Enter sewer 68. ft. W.
of m.h. at Ocean St.

#193 Henry C. Bushnell
 115-28 Hanover st.
 L. F. Lewis D.S. Permit 7494
 opened March 14. 93 cut 10.2
 closed " 15. "

Reopened Mch 93 } 3. conductor added
 Closed Mch 20 93 } Geo. H. Lewis D. L.
 Reopened - Jan 17. 1936
 Closed - Jan 18. 1936

f. Errico - clear open sidewalk

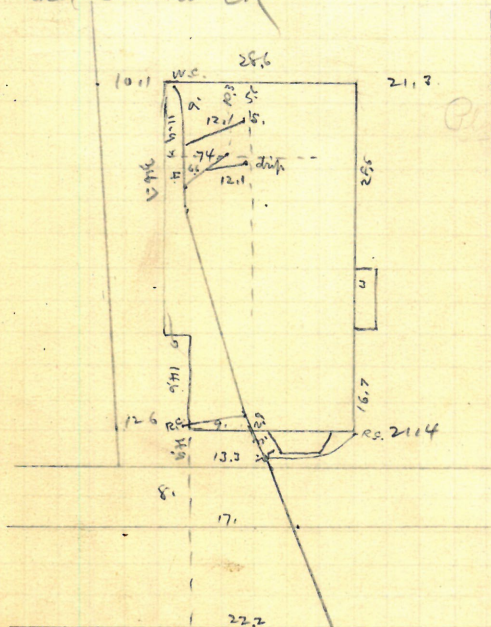
Reopened - Apr. 25, 1940.

4 closed - Apr. 25, 1940

f. Errico - clear - root

opened sidewalk

Platte 2



Enter sewer 62.8 West of 4th N.W. E of Cranston

Aug 25
92

Alfred Hough, + wife
John Hough, D.L.
(Through Hyatt St. sewer)
Opened Aug. 25, 1892.
Closed " 29, "

70-74 Rosenth. St.
S.E. Co. # 287 Hyatt St.
Permit # 6920

Cut 10. ± ft.
as reported

Reopened Aug. 28, 1901 -

closed " 29, 1901 -

Wm. Condry D. L. -

12 Reopened - Dec. 13, 1937

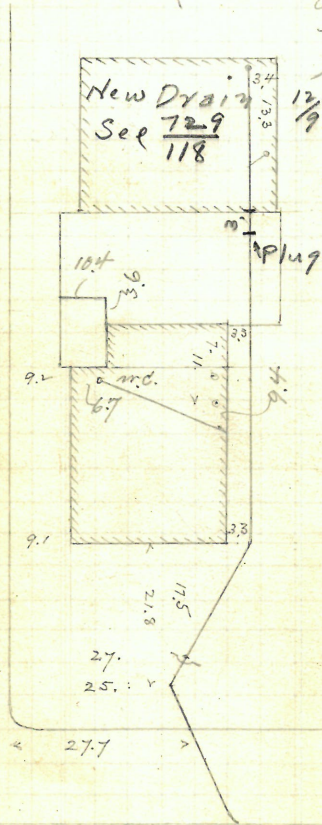
19 Closed - Dec. 14, 1937

Jean Catri - Discon-

nect # 70 Rosenth. St.

Plattner

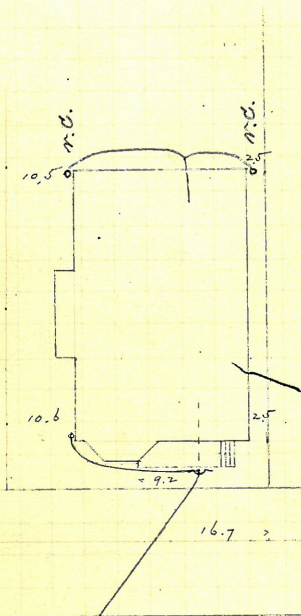
1
down
St.



Entire sewer 65 ft. N. of 3 m.b.
N. of Marston ave.

Aug 25
92

Wm + Ellen Doyle 15 Joslin st.
 John Keogh, D.L. Permit # 6921.
 Opened Aug. 26, 1892 6" pipes
 Closed " 27 " Cut at curb, 10.8
 Reopened Jan'y 3-1902
 Closed " 4-1902
 J. Deary D. L. ~

Platting

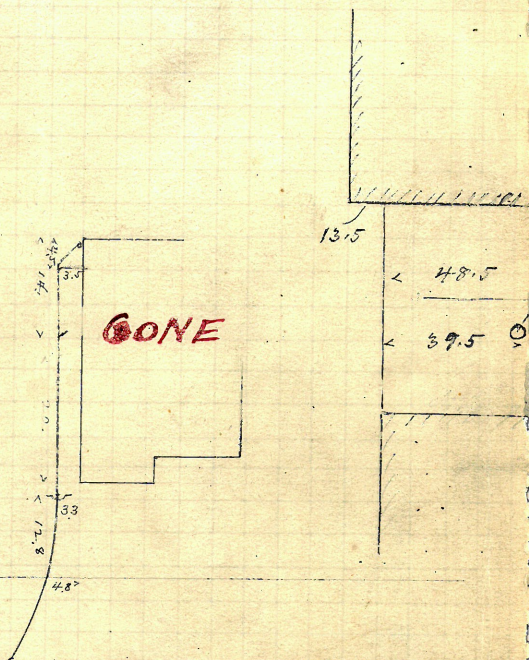
Enters sewer 25.7 ft. N.
 3d. under N. of Amherst st.

152 ✓

P-157
8

Aug 1

Lizzie E. O'Leary
 159 Meeting St.
 James P. Millard, Jr.
 Permit # 6922
 Opened Aug 29, 1892
 Closed Sept 10, "



Enter sewer 15.2 ft. W. of
 both in the W. of Meeting St.

P 167
43

Aug 153
25
72

Mechanical Fabric Co.
(West Conn.)
382 Sprague St.

J. Frank Read, Jr.

Permit # 6923.

Opened Aug. 29, 1892.

Reopened Oct. 13, 1899
by J. F. Read & Co.

6" pipes -
Cut at curb,
10.1 +

Cromwell Street

For Original See Plan on Brown

Reopened Apr. 26/12

Reopened " " 1912

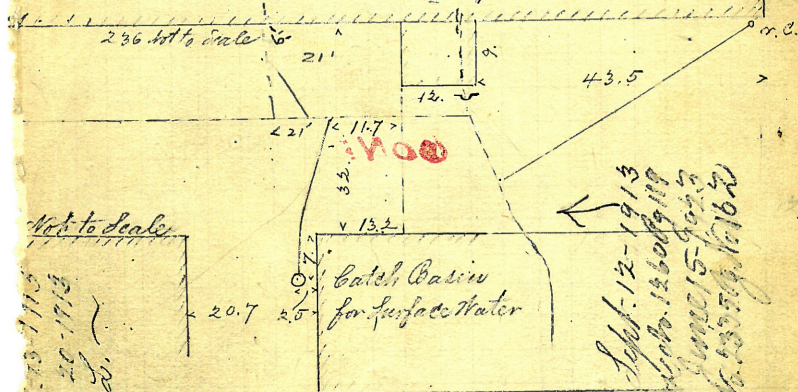
John Deary D. L.

Reopened & Closed Aug 27/04

J. A. Hammings clear

Excavations done March 22-1897

See Plan on Brown Paper 169-A-6



Not to Scale

1893-1913
1913-1915
1915-1917
J. Deary D. L.

Sprague Street

Stop City Sept. 12-1913
See Plan No. 12608/19
for Exc. June 15-1913
See Plan No. 12608/19

Center line 28.6 ft. E. of
the curb E. of section line.

(Middle cont.)
J. Frank Read, D.L. Permit # 6924.
Opened Aug 25 1/2 6" pipe
Cut at curb
0.6

Opened Aug 25

Permit # 6924.
6" pipe
cut at cut
0.8

For Original See Brown's Paper Plan
169-A-6 -

Plotted

Received June 25-1920

Closed " 29-1920

J. Cuddy & Co. - Renew -

Neophradites 11-1923

11/14/1923

C. C. Cottrell, Esq.
 101 West 12th St.

Recd Sept 24 1946 7/23/11

Dec - Sept 24 1946 1946
Clear as elsewhere.

Wm. Mayson Esq.

For Ex. Work. Apr. 13-1915

See Box 1260, Pg. 119-

See MS 1260, pg 119-
Culver, Lewis 140-b f. e. d.
4th mth. E. of Dutton 12.

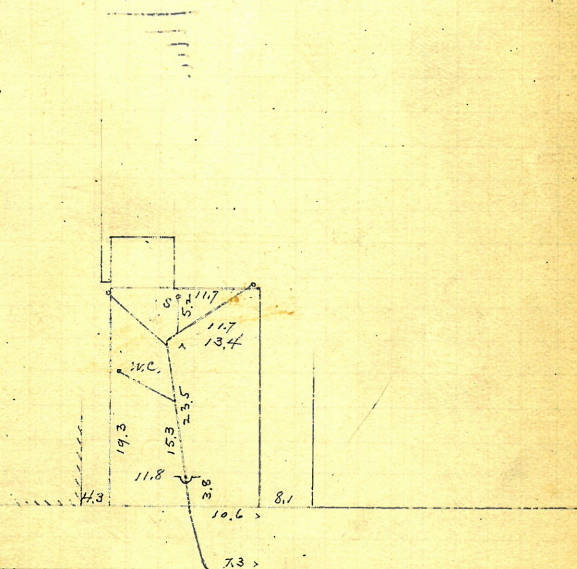
GONE

✓ 155
Aug 25
92

Margaret Buchanan
17 Willow Court,
through private drain of
May Potter est.
Frank Read D.L. Permit # 6925
5" pipe.

Reported "conn. with sewer, Aug. 25, 1892".

Plotted



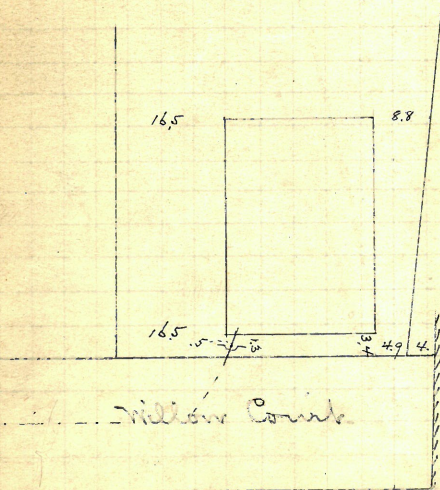
Enters sewer through private
drain of Est. of May Potter.

Aug 25
92

Wm V. Sany Est.
 Est. of Harriet Arnold
 24 Willow Court.
 Through private drain of
 Mary Potter est.
 J. Frank Read, DL. Permit #6926.

Drain extended from #20, and this
 connection made* without my knowledge.
 * Mr. Read says Aug. 29/92. C.H.P.

Plotted



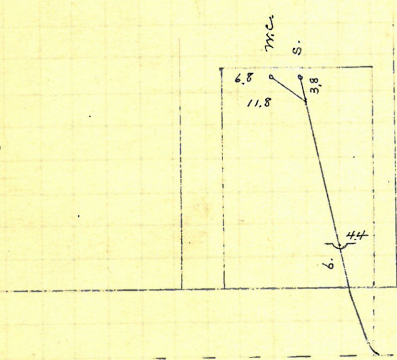
Willow Court
 Entire sewer through private
 Est. of Mary Potter.

✓ Aug 157
925
92

James F. Johnson
8-11 Willow Ct.
Through private drain of
Mary Potter est.
Frank Read, W.L. Permit # 6927.
5" pipe

Connection reported made
Aug. 22^d, 1892. Done without
my knowledge. W.P.

Plotted
=



Enters sewer through private
drain of Est. of Mary Potter.

Caroline W. Farnham W. H. S.

81-83 69 Putnam St.
Mc. Shuman D. L.

Permit 7527

opened March 27. 93.

closed

Reopened July 23-1915

Closed " 1915

J. D. Cannon D. L. clearance

Reopened Dec. 5/18

closed

Deery St. clearance

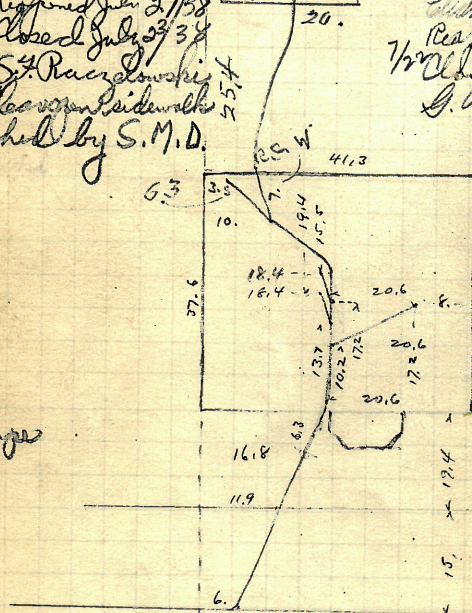
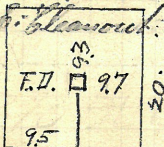
Reopened July 2/18

Closed July 23/38

S. Raczewski

Clearance sidewalk

flushed by S. M. D.



entrail cut. 10.3

Reopened April 30-1923

Closed May 1-1923

S. D'Alva D. L.

Reopened June 20-1930

Closed July 1-1931

J. D. Cannon D. L.

Clearance Plotted

Reopened - July 27, 1931

1/2 Closed - July 23, 1931

J. D. Cannon

Reopened May 30/38

Closed May 31

S. Raczewski

Clearance

Putnam St.

8.7 S. of 2nd m. S. of Putnam
Enter sewer 1207. N of m. 61. at summit.

159

B. Brady, DL.

Opened Aug. 26, 1892.
Closed Sept. 2, "

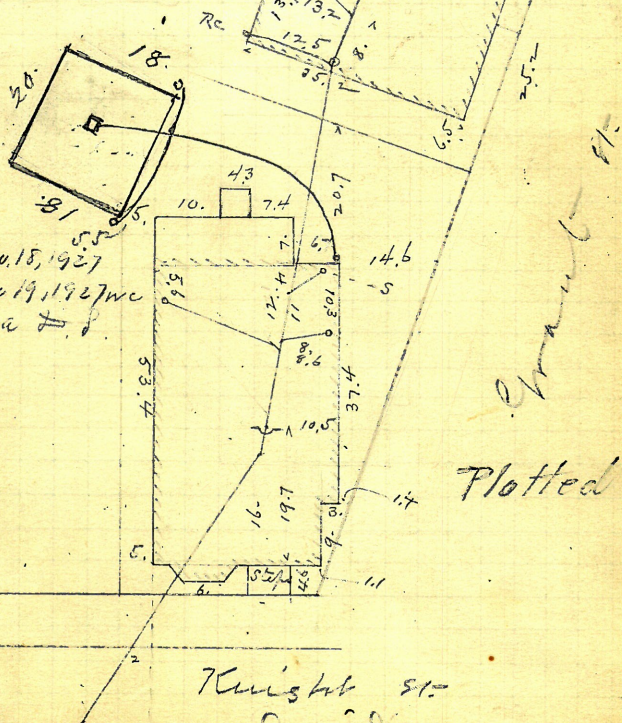
Permit # 6929.

6' 1/2' high.

Cut at curb,
reported as 10.6 -

Reopened Sept. 28-1917

Closed " 28-1917
D. Mondillo D. F. -



Reopened Nov. 18, 1927
-closed Nov 19, 1927 we
H. Ferrazza D. S.

Plotted

7 Knight St.

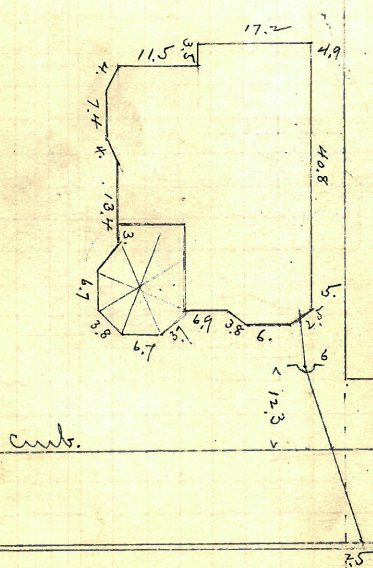
Enter. saw. 99.4 ft. N. of
P. m. N. of Carpenter st.

GONE

Aug 25

Hope B. Russell
J. Frank Read, 191 Thayer St.
Permit # 6939
Opened Aug 31, 1892.
Closed Sept - 2 " 6" pipes
Cut at cuts.
9-9 ft.

Plotted



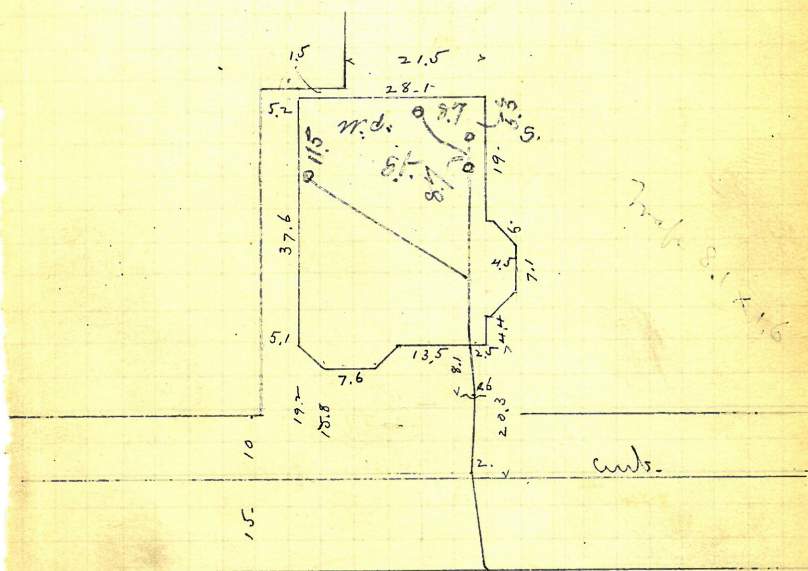
Enter river 104.5 ft. N. of
1st. m. S. of Manning St.

GONE

✓ Aug 161
25
92

Hope B. Russell, 195 Thayer St.
J. Frank Read, D.L. Permit # 6931.
Opened Aug. 29, 1892 6" pipes.
Closed Sept. 1, 1892
Reopened & closed Nov 7-1906 Curb at curb, q. 8
W. H. Chadwick D. L. - Eleanor -
Reopened Aug. 11-1914
Closed 11-15-1914
B. Dupont D. L. -

Plotted

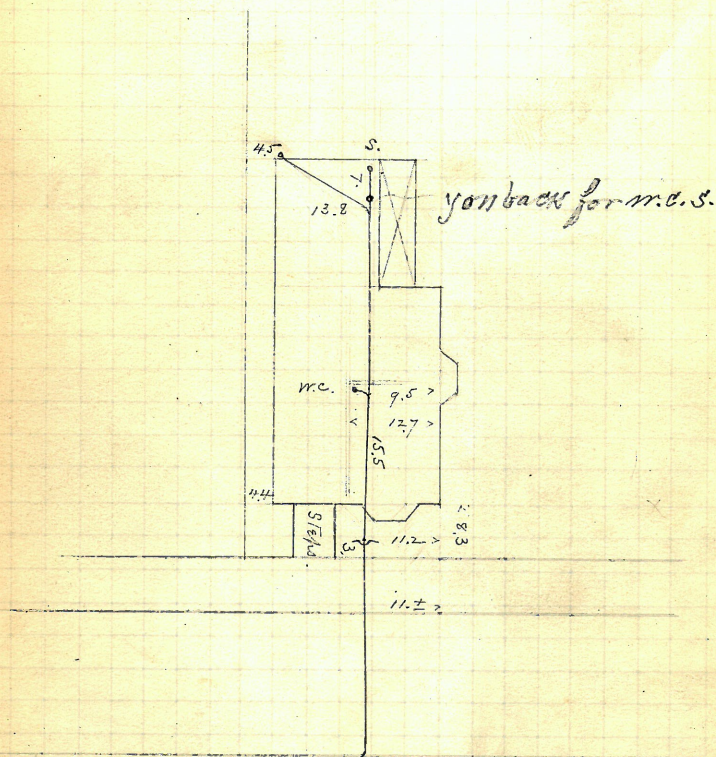


Enters sewer 58.3 ft. N. of
sp. man. N. of Manning St.

Aug 26
92

Jane J. Patterson
 Geo. F. Lewis, DL. 88 Bellevue ave
 Permit # 6932
 Opened Aug. 29, 1892. 5" pipes.
 Closed " 30, " Cut at ant.
 Reopened July 28-1909 10.2
 Closed " 28-1909
 J. B. Hallon D. L.

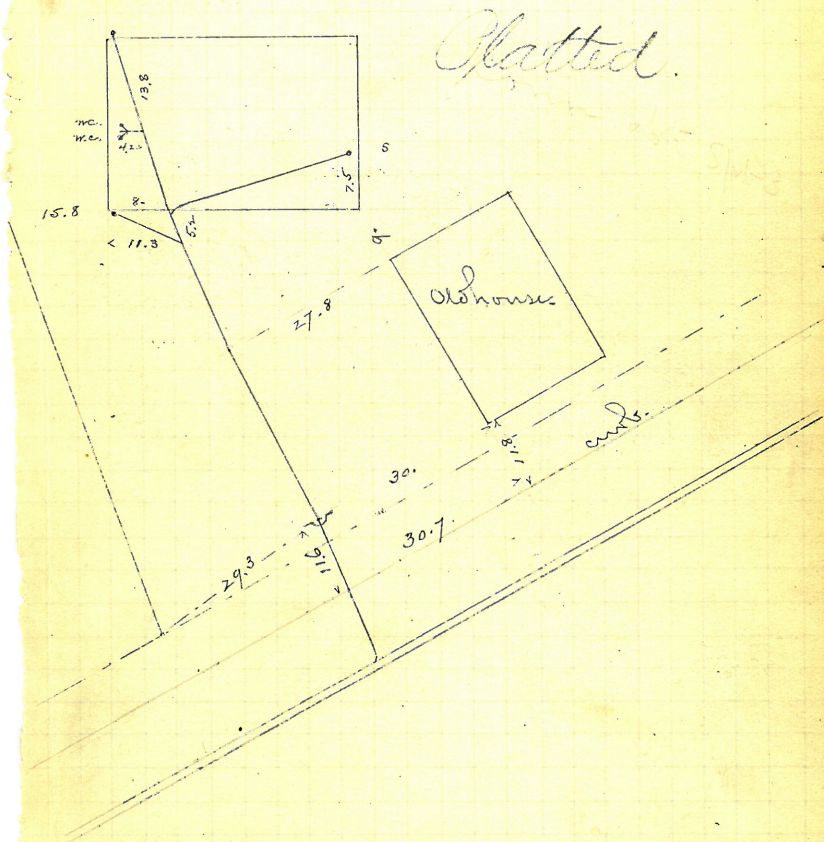
Plotted



Enters sewer 19.9 ft. W. of 2 m. h.
 E. of Cranston st.

✓ 163
Aug 26
92

Margaret T. Carroll
#12? Armstrong ave.
David E. Barry, D.L.
Permit # 6933.
Opened Aug. 29, 1892. 5" pipe
Closed Sept. 27, " Cut at ends, 10.8



enter sewer 90.1 ft. E.
1st. int. E. of Brook St.

164 ✓

See Westminster Hall

Aug-26

R. J. Investment Co.

262-270 Westminster St.

B. Brady & Co. E. & G. Brown & Co.

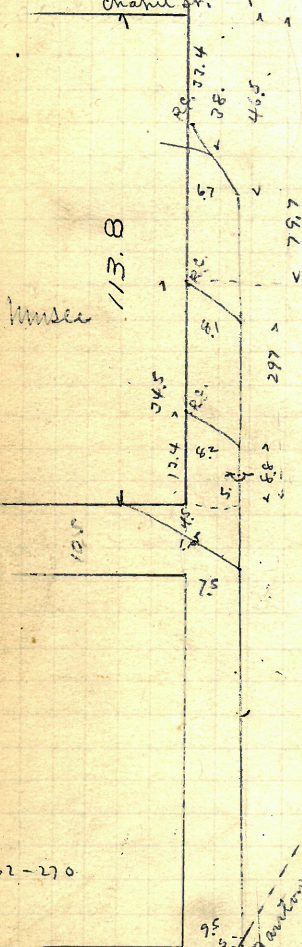
Opened Aug. 27, 1892

Closed Sept. 7, 1892

Permits = 6934

6" pipes

main st.



See Card.

Reopened & closed to clean
out, Jan. 14, 1893.

Reopened July 29 & 30-1902

M. H. Colgrove D. S. - Cleaned

Reopened Nov 20-1907

Closed " 21-1907

C. P. Brennan D. S. - Cleaned

Reopened Apr 9-1907

Closed " 23-1907

C. P. Brennan D. S. - Cleaned

Plotted

Music Hall

262-270

A.C. Bantons drain

Westminster St.

Enter sewer through drain of A.C. Bantons
at 21.8 ft. S.W. of 2nd with S.W. of Snow St.

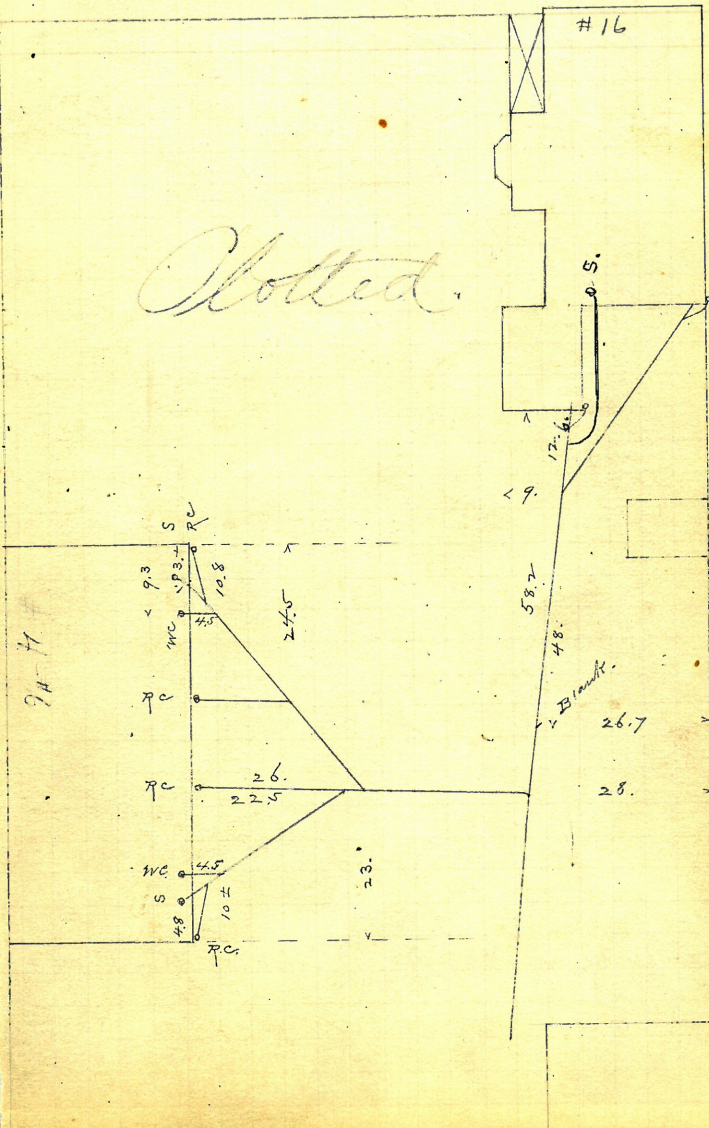
~~REMOVED~~

Heirs of ~~W. D. Norton~~ Perkins &c.
concluded from p. 139.

Lester St.

Plotted.

Murree St.



Sardens St.

Julia Curran

213-147 Lins st.

P.H. Cassidy D.L.

Permit 7378

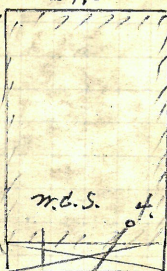
Opened March 13.93.

Closed " 18 "

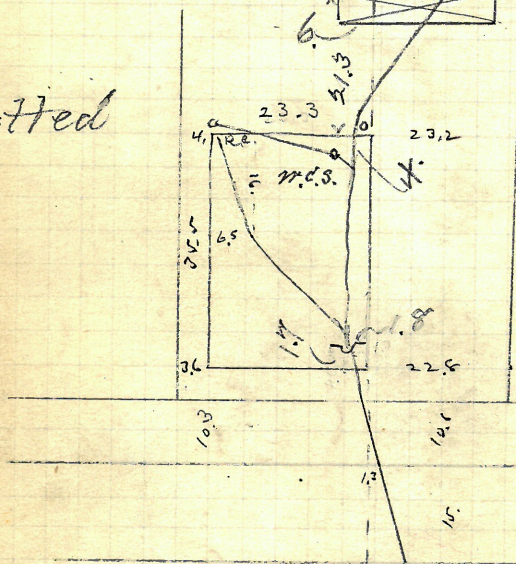
Reopened Dec. 23-1907

Closed " 27-1907

J.C. Mulvihill D.L.



Plotted

Enter sewer 43. N of 1st M.H. N of Tower.

