

# RESOLUTION OF THE CITY COUNCIL

No. 208

Approved May 25, 2016

RESOLVED, That His Honor, the Mayor, is hereby authorized to  
apply for a grant from the Rhode Island Department of Environmental  
Management in the amount of \$100,000.00 to complete the Joslin Park water park  
in the City of Providence.

IN CITY COUNCIL

MAY 19 2016

READ AND PASSED

PRES.

CLERK

I HEREBY APPROVE.

Mayor

Date:

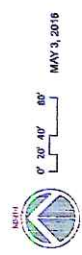
5/25/16



# Lincoln Lace Park

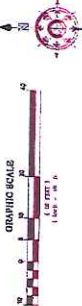
Providence, RI

## Adventure Park Draft Master Plan

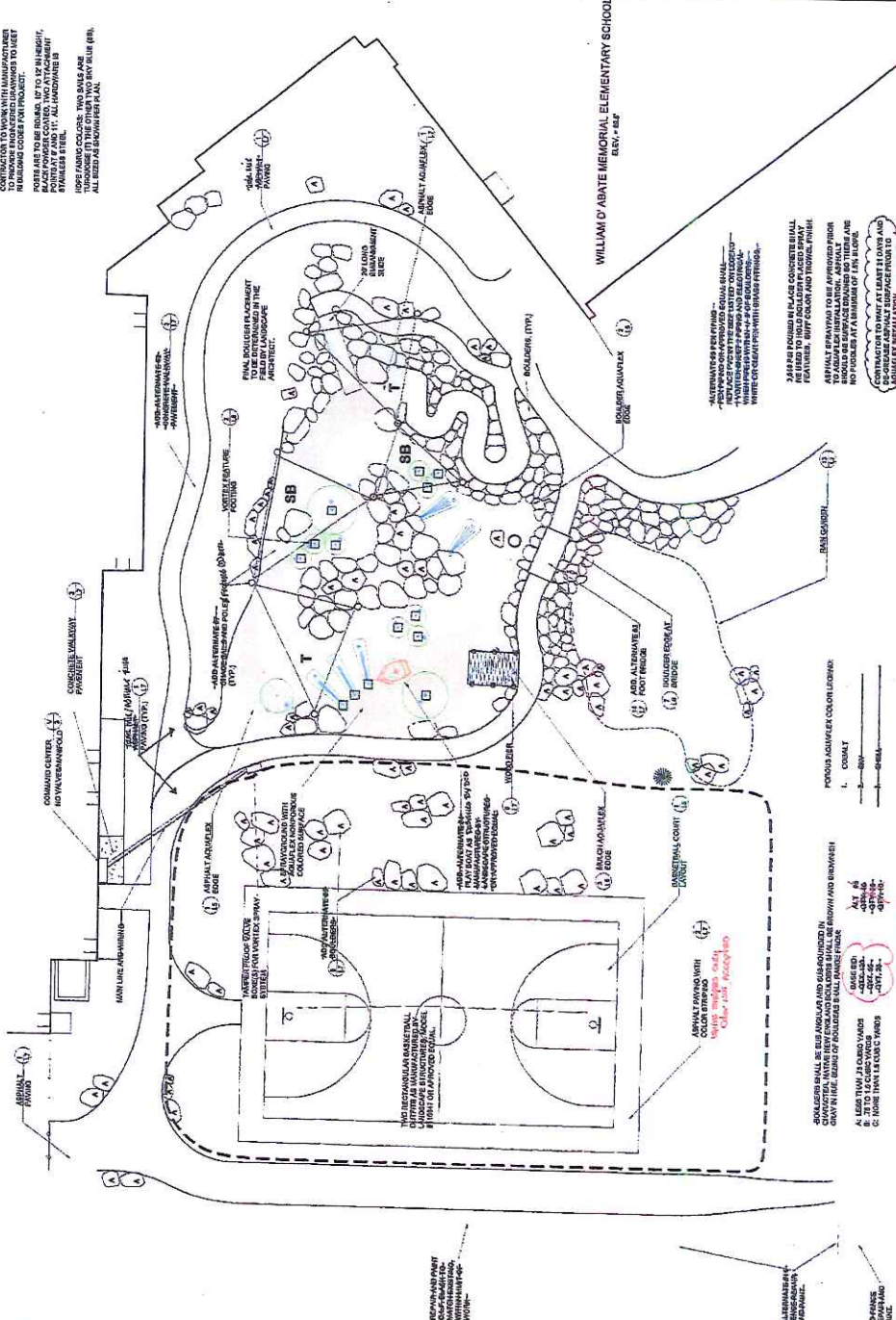
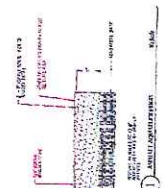
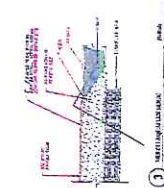




## Materials Plan



NOTE:  
SHAPE BAILS SHALL BE MANUFACTURED BY  
POURCON FABRIC (610.352.1603) OR APPROVED  
EQUIV.  
CONTRACTOR TO WORK WITH MANUFACTURER  
TO PROVIDE ENGINEERED DRAWINGS TO MEET  
NATIONAL CODES FOR PROJECT.  
FOOTS ARE TO BE ROUND, 10" TO 12" IN HEIGHT,  
BLACK POWDER COATED, TWO ATTACHMENT  
POINTS AT 8" AND 11". ALL HARDWARE IS  
STAINLESS STEEL.  
HOPKINS FABRIC CODES: TWO BAILS ARE  
THROUGHOUT THE OTHER TWO BAY BLUE (#8).



2.018 P. IS REQUIRED IN PLACE CONCRETE SHALL  
BE USED TO HOLD BOLDS/PLACED SPRAY  
FEATURES, SUIT COLOR AND TROWEL FINISH

ASPHALT SPRAY/PAD TO BE APPROVED PRIOR  
TO ADJACENT INSTALLATION. ASPHALT  
SHOULD BE SURFACE DRAINED SO THERE ARE  
NO PUDDLES AT A MINIMUM OF 1.5% SLOPE.

CONTRACTOR TO WAIT AT LEAST 11 DAYS AND  
DE-ICE/REASPHALT SURFACE PRIOR TO  
ADJACENT ASPHALT LAYDOWN

COUNTY

ALL BOWLING BALLS ARE SUB-ARCTIC AND SUB-ROUNDED IN  
DESIGN. NATIVE NEW ENGLAND BOWLERS SHALL BE BROWN AND BROWNISH  
IN TONE. SIZES OF BOWLING BALLS RANGE FROM 14 TO 16 INCHES.

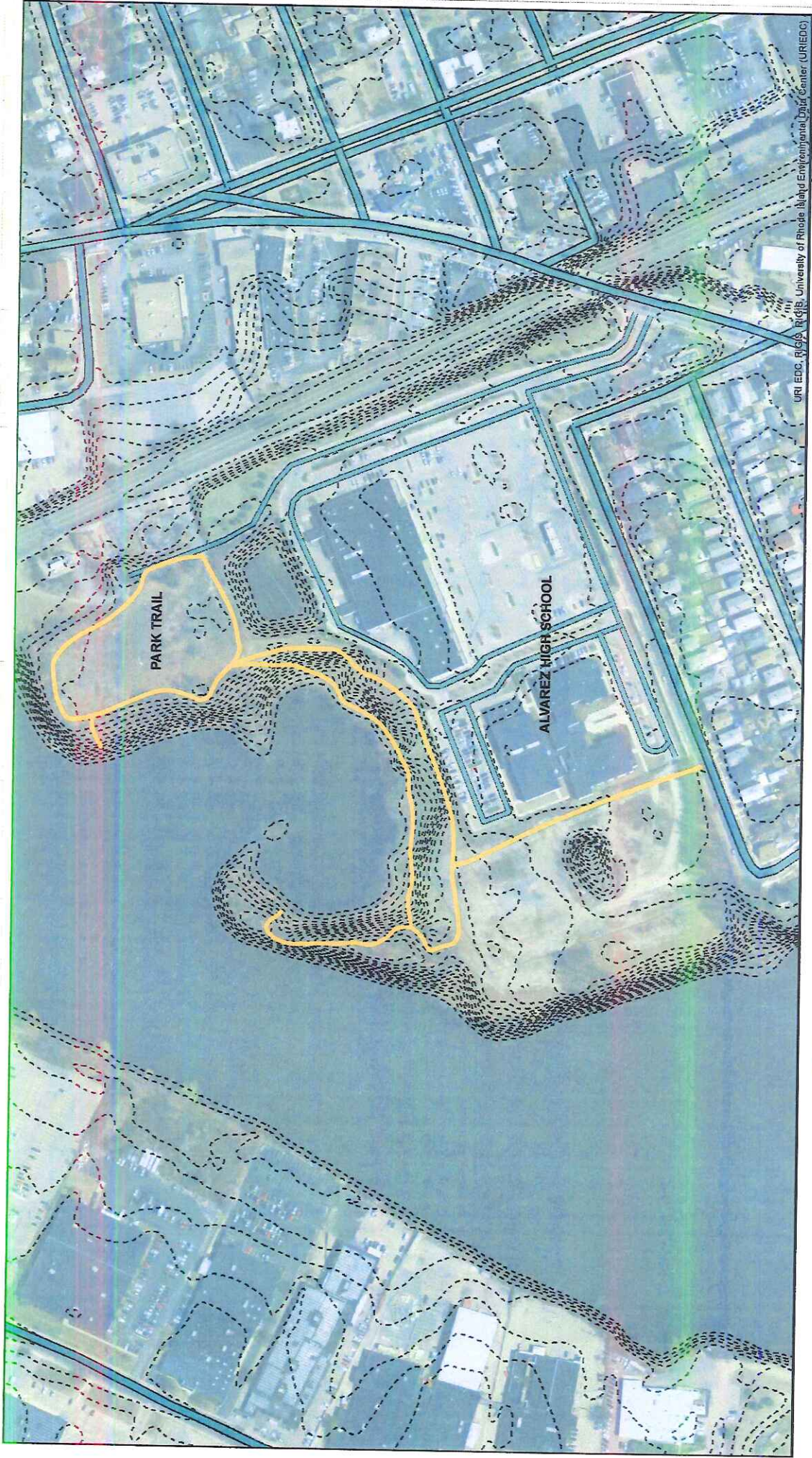
LESS THAN 1/8 CUBIC YARDS  
1/8 TO 1.5 CUBIC YARDS  
MORE THAN 1.5 CUBIC YARDS

BASED ON:  
-QTY 13  
-QTY 66  
-QTY 23

ALT. NO.  
-QTY 10  
-QTY 10  
-QTY 10

Copyright © by Doubleday/Gentle, LLC  
All Rights Reserved





## PARKS DEPARTMENT PRELIMINARY TRAIL CONCEPT

1 inch = 259 feet