

# RESOLUTION OF THE CITY COUNCIL

No. 98

Approved March 9, 1973

RESOLVED, That the City Solicitor be and hereby is authorized to appear before the 1973 Session of the General Assembly and urge passage of an Act relative to transferring and conveying Corliss Park to the City of Providence, substantially in accordance with the accompanying draft act.

IN CITY COUNCIL

MAR 1 - 1973

READ and PASSED

*Robert J. Dwyer*  
President  
*Vincent C. Capria*  
Clerk

APPROVED

MAR 9 1973

*Joseph A. Dwyer*  
.....  
MAYOR

RESOLUTION AUTHORIZING THE  
CITY SOLICITOR TO APPEAR BEFORE  
THE 1973 SESSION OF THE GENERAL  
ASSEMBLY AND URGE PASSAGE OF  
AN ACT RELATIVE TO CORLISS PARK.

*Councilman Macmillan  
and Councilman Flynn, by request*

THE COMMITTEE ON  
PUBLIC WELFARE  
APPROVED REPORT OF  
THE WELFARE ASSOCIATION  
*Chairman*  
*Don*  
FEB 22 1973

IN CITY  
COUNCIL  
FEB 15 1973  
FIRST READING  
REFERRED TO COMMITTEE ON  
PUBLIC WELFARE  
*Clerk*

# State of Rhode Island, &c.

## IN GENERAL ASSEMBLY

JANUARY SESSION, A. D. 19 73.

### AN ACT

AUTHORIZING THE STATE OF RHODE ISLAND AND PROVIDENCE PLANTATIONS TO TRANSFER AND CONVEY TO THE CITY OF PROVIDENCE THAT PORTION OF CORLISS PARK HEREIN DESCRIBED.

*It is enacted by the General Assembly as follows:*

SECTION 1. The State of Rhode Island and Providence Plantations is hereby authorized to transfer and convey to the City of Providence that portion of land described within the area entitled "Corliss Park", as set out and delineated in part on Lot 138 on Assessor's Plat 99, and as embodied by Virginia Lane northerly, Fernando Street southerly, and Corina Street easterly. (Attached hereto is a sketch of that portion of "Corliss Park" heretofore mentioned.)

The use of the same shall be expended for the purpose of acquiring, developing, equipping and improving recreational facilities in the City of Providence.

SEC. 2. This Act shall take effect upon its passage.

# PLAT 99

PROVIDENCE, R.I.

Showing parcels estate as assessed  
DEC. 31, 1971

CORLISS PARK

138

SV 79

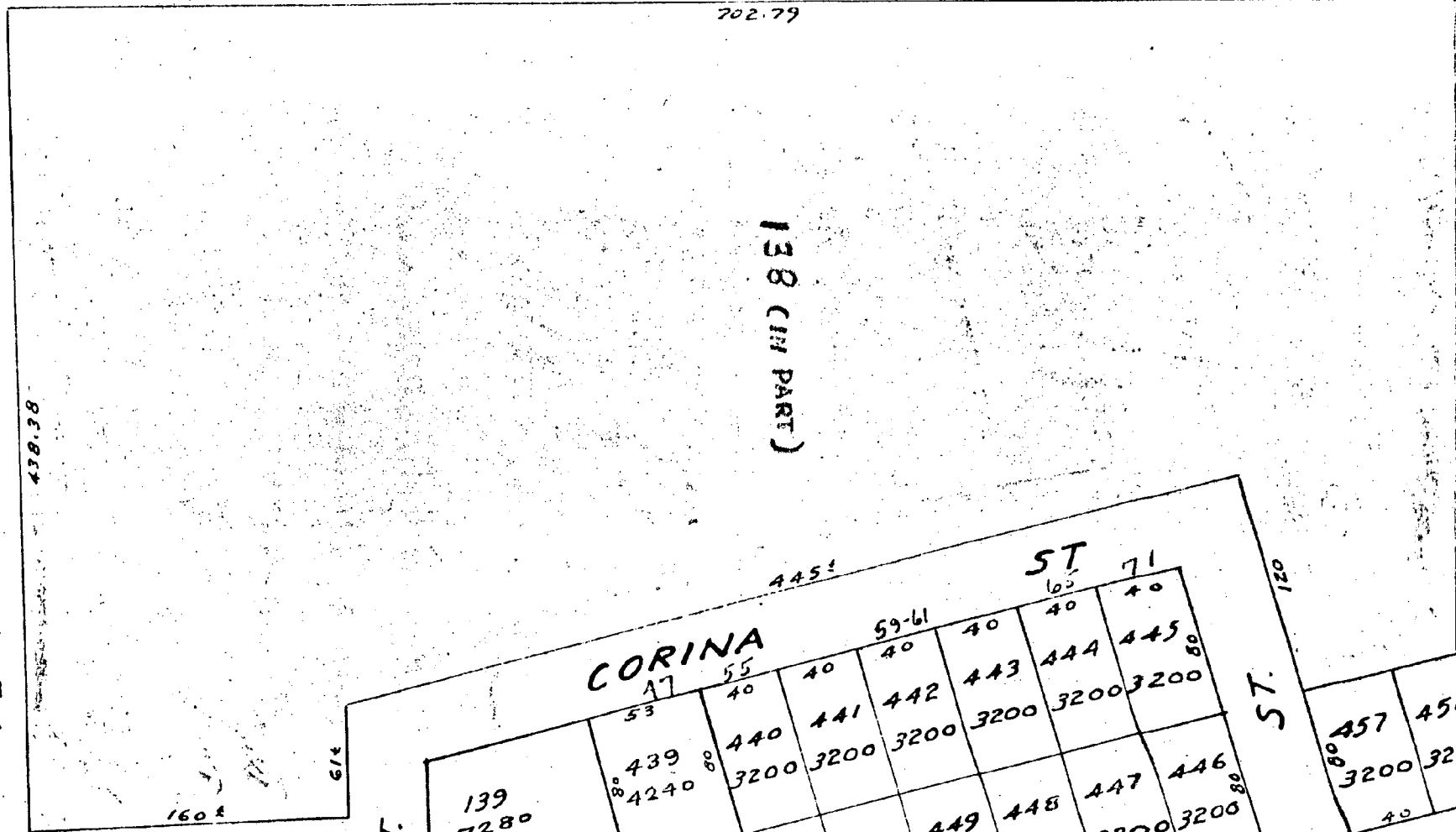
36.08 186 4299 94.98 183 4249 28.58	90°	137	437	436	435	434	433	432	431	430	429	428	427	426	425	424	423	422	421	420	90°
		4500	3600	3600	3600	3600	3600	3600	3600	3600	3600	3600	3600	3600	3600	3600	3600	3600	3600	3600	
		50	40	40	40	40	40	40	40	40	40	40	40	40	40	40	40	40	40	40	

VIRGINIA LANE

160.04 190 6988	172	178	225	223	226	177	227	176	181	174	163	188	157	228	158	159	230	231	16	3153	3134
		3200	3200	3200	3200	3200	3200	3200	3200	6400	3200	3200	3200	3200	6400	3200	3200	3200	3162	3206	3200
		40	40	40	40	40	40	40	40	40	40	40	40	40	40	40	40	40	40	40	40

ST.

FERNANDO



CORINA										445	ST	71			
139		53		55		40		59-61		40		40		40	
7280		439		440		441		442		443		444		445	
		4240		3200		3200		3200		3200		3200		3200	
455		453		452		451		450		449		448		447	
63-10		3200		3200		3200		3200		3200		3200		3200	
		40		40		40		40		40		40		40	
		22		26		26		30-32		34		36		37	
		10R		25		80									

CORINA

ST.

457	458	460	212
3200	3200	3200	6400
40	40	40	80
45	45	45	45
255	256	257	258
3200	3200	3200	3200
40	40	40	40

CORINA

ST.