

# RESOLUTION OF THE CITY COUNCIL

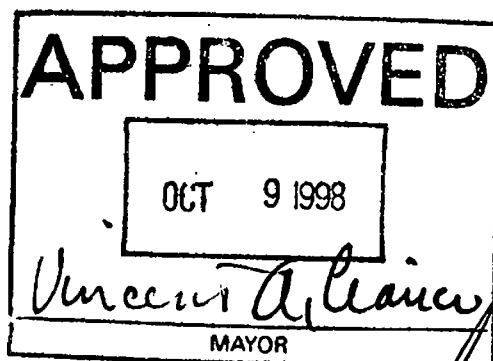
No. 592

Approved October 9, 1998

RESOLVED, That the Director of Public Works is requested to review the proposed site plan for the new cul de sac on Edgewood Boulevard.

IN CITY COUNCIL  
OCT 1 1998  
READ AND PASSED

*Evelyn V. Fargnoli*  
PRES.  
*Richard X. Clement*  
CLERK



WORTH  
JAN 10 1900  
LIBRARY

Calculus Clark (By request)

NANCY L. DERRIG  
Superintendent of Parks



VINCENT A. CIANCI, JR.  
Mayor

## Department of Public Parks

*"Building Pride In Providence"*

### MEMORANDUM

TO: COUNCILMAN ROBERT CLARKIN, CHAIRMAN PUBLIC WORKS COMMITTEE

FROM: NANCY L. DERRIG, SUPERINTENDENT OF PARKS

*NLD*

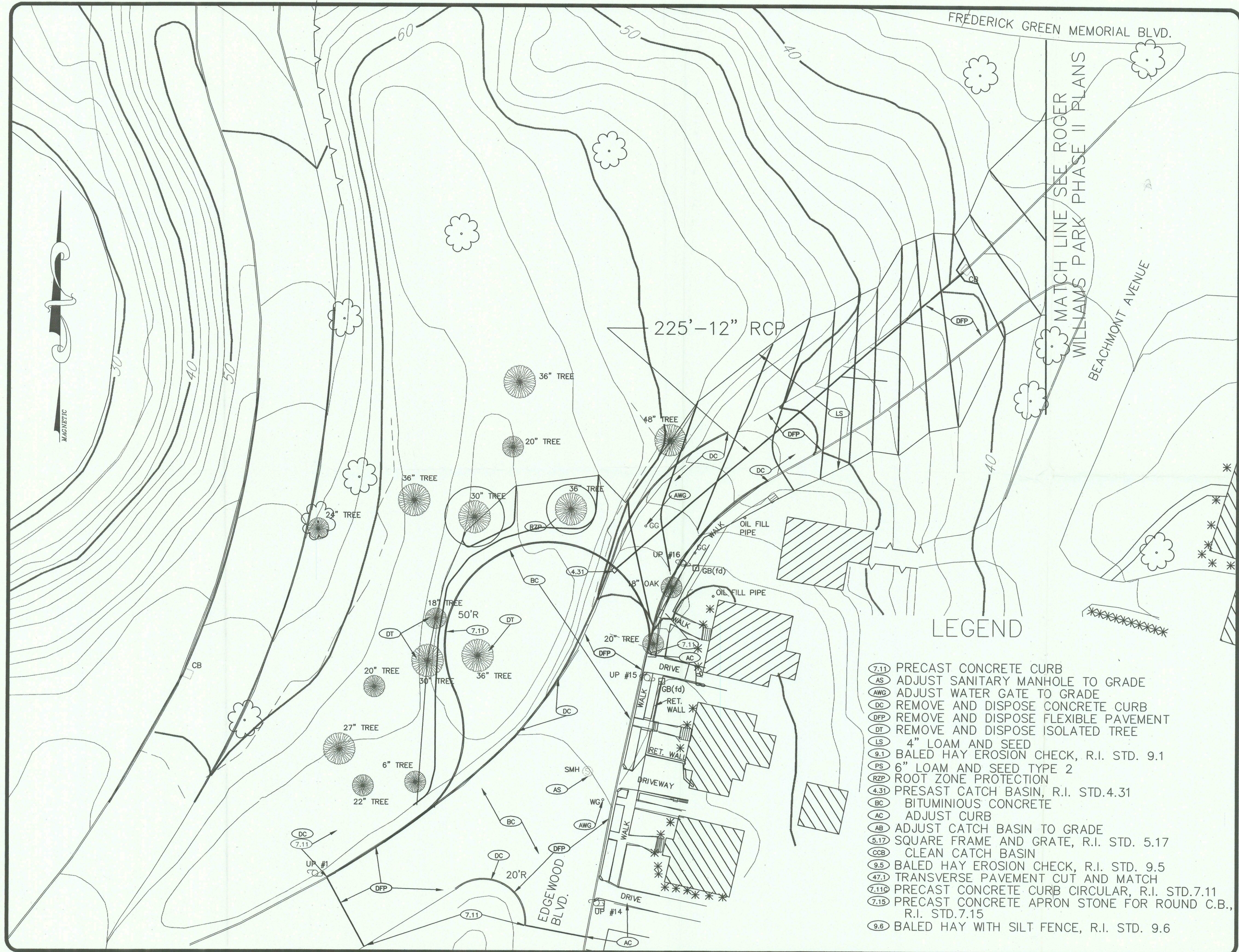
DATE: SEPTEMBER 21, 1998

The Department of Public Parks is requesting a review of the proposed new cul de sac on Edgewood Boulevard, Providence. Enclosed is a site plan. Similar plans have been sent to Fred Ihenacho and James Morris at the Department of Public Works.

Your expeditious consideration of this request would be appreciated.

cc: Fred Ihenacho  
James Morris





LEGEND

- (7.11) PRECAST CONCRETE CURB
- (AS) ADJUST SANITARY MANHOLE TO GRADE
- (AWG) ADJUST WATER GATE TO GRADE
- (DC) REMOVE AND DISPOSE CONCRETE CURB
- (DFP) REMOVE AND DISPOSE FLEXIBLE PAVEMENT
- (DT) REMOVE AND DISPOSE ISOLATED TREE
- (LS) 4" LOAM AND SEED
- (9.1) BALED HAY EROSION CHECK, R.I. STD. 9.1
- (PS) 6" LOAM AND SEED TYPE 2
- (RZP) ROOT ZONE PROTECTION
- (4.31) PRECAST CATCH BASIN, R.I. STD. 4.31
- (BC) BITUMINIOUS CONCRETE
- (AC) ADJUST CURB
- (AB) ADJUST CATCH BASIN TO GRADE
- (5.17) SQUARE FRAME AND GRATE, R.I. STD. 5.17
- (CCB) CLEAN CATCH BASIN
- (9.5) BALED HAY EROSION CHECK, R.I. STD. 9.5
- (47.1) TRANSVERSE PAVEMENT CUT AND MATCH
- (7.11C) PRECAST CONCRETE CURB CIRCULAR, R.I. STD. 7.11
- (7.15) PRECAST CONCRETE APRON STONE FOR ROUND C.B., R.I. STD. 7.15
- (9.6) BALED HAY WITH SILT FENCE, R.I. STD. 9.6

CITY OF PROVIDENCE

ROADWAY IMPROVEMENT PROJECT

EDGEWOOD BOULEVARD

NO.	REVISION	BY	DATE

**GAROFALO**

GAROFALO & ASSOCIATES, INC.

ENGINEERS / ARCHITECTS / LAND PLANNERS / SURVEYORS

100 INDIA STREET

PROVIDENCE, R.I. 02901

TEL. 401-273-6000

JOB NO. 4917	DRAWN BY J.N.
DWG. NO.	CHECKED DTC
SCALE: 1"=20'	APPROVED SBG
	DATE: 2-98

SHEET

1

OF 1 SHEETS