



**OFFICE OF THE COMMISSIONER OF PUBLIC SAFETY**  
Steven M. Paré, Commissioner of Public Safety | Jorge O. Elorza, Mayor

March 15, 2018

The Honorable David A. Salvatore  
The Honorable Members of City Council  
Providence City Council  
25 Dorrance Street  
Providence, RI 02903

**RE: PFD 2017 Annual Report**

Dear Mr. President and Honorable Members of the City Council:

Enclosed please find the Providence Fire Department's Annual Report for the year 2017 for your review and file.

If you have any questions, please do not hesitate to contact my office.

Very truly yours,

**Elaine Richards**  
Deputy Commissioner of Public Safety

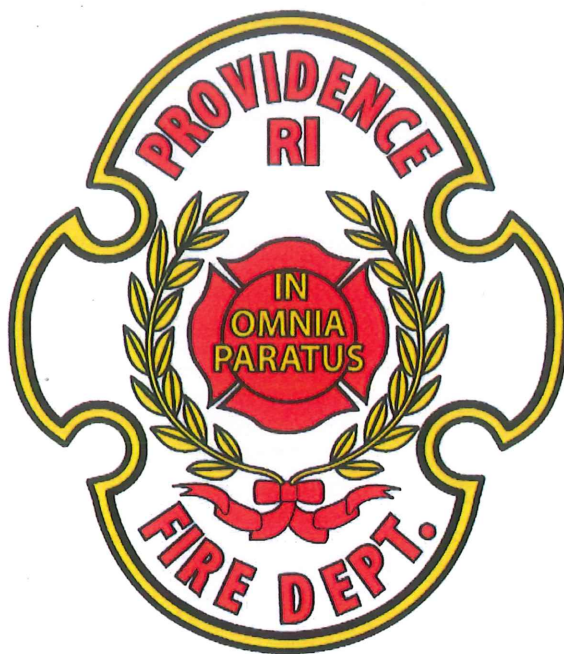
Enclosure

cc: Lori Hagen, City Clerk

IN CITY COUNCIL  
APR 05 2018

READ  
WHEN UPON IT IS ORDERED THAT  
THE SAME BE RECEIVED.  
  
CLERK

# PROVIDENCE FIRE DEPARTMENT



## 2017 ANNUAL REPORT

STEVEN M. PARÉ  
Commissioner of Public Safety  
Acting Chief of Department

JORGE O. ELORZA  
Mayor



**STEVEN M. PARÉ**  
Commissioner of Public Safety  
Acting Chief of Department



**JORGE O. ELORZA**  
Mayor

Department of Public Safety, Fire Department  
*"Building Pride in Providence"*

Welcome to the Providence Fire Department:

The Providence Fire Department is the second oldest continuously operating professional fire department in the country. The Department is a full-service fire and emergency medical service agency that provides basic and advanced life support, fire prevention, fire suppression, technical rescue, and hazardous material response. In addition, the Department conducts arson investigations and building plan reviews, enforces state and local fire and life safety codes, and administers public fire education programs.

In 2017, the Providence Fire Department consisted of 7 Advanced Life Support Rescue Companies, 12 Engine Companies, 7 Ladder Companies, and 1 Special Hazard Unit, all strategically located in Providence neighborhoods. The Department is equipped to respond to all fire, medical emergency, natural disaster, hazmat, and terroristic events that occur within Providence and its surrounding communities.

On behalf of the Providence Fire Department, I present to you the Department's 2017 Annual Report that highlights the Department's many accomplishments, fire and emergency medical calls for service, trainings, and fire prevention activities. This report is a testament to the men and women who proudly serve as Providence Firefighters.

I want to extend my sincere thanks and appreciation to every sworn and civilian member of the Providence Fire Department for their outstanding work in keeping the citizens of Rhode Island's capital city safe.

Sincerely yours,

Steven M. Paré  
Commissioner of Public Safety  
Acting Chief of Department

## **Providence Fire Department 2017 Annual Report**

Established in 1854, the Providence Fire Department is the second oldest continuously operating professional fire department in the country. The Department is a full-service fire and emergency medical service agency that provides basic and advanced life support, fire prevention, fire suppression, technical rescue, and hazardous material response. In addition, the Department conducts arson investigations and building plan reviews, enforces state and local fire and life safety codes, and administers public fire education programs.

### **Accomplishments for 2017**

In 2017, the Providence Fire Department responded to 43,272 total calls for service. Of the total calls, 28,310 or 65.42 % were emergency medical services related. The calls are composed of 25,160 advanced life support and 7,685 basic life support calls for service. In addition, the Fire Prevention Bureau's Arson Squad conducted 242 fire investigations. As always, Providence Firefighters answered calls with professionalism, compassion, and true to our mission to protect life and all property.

The following is a list of accomplishments that have been achieved through the dedication and hard work of all the members of the Providence Fire Department:

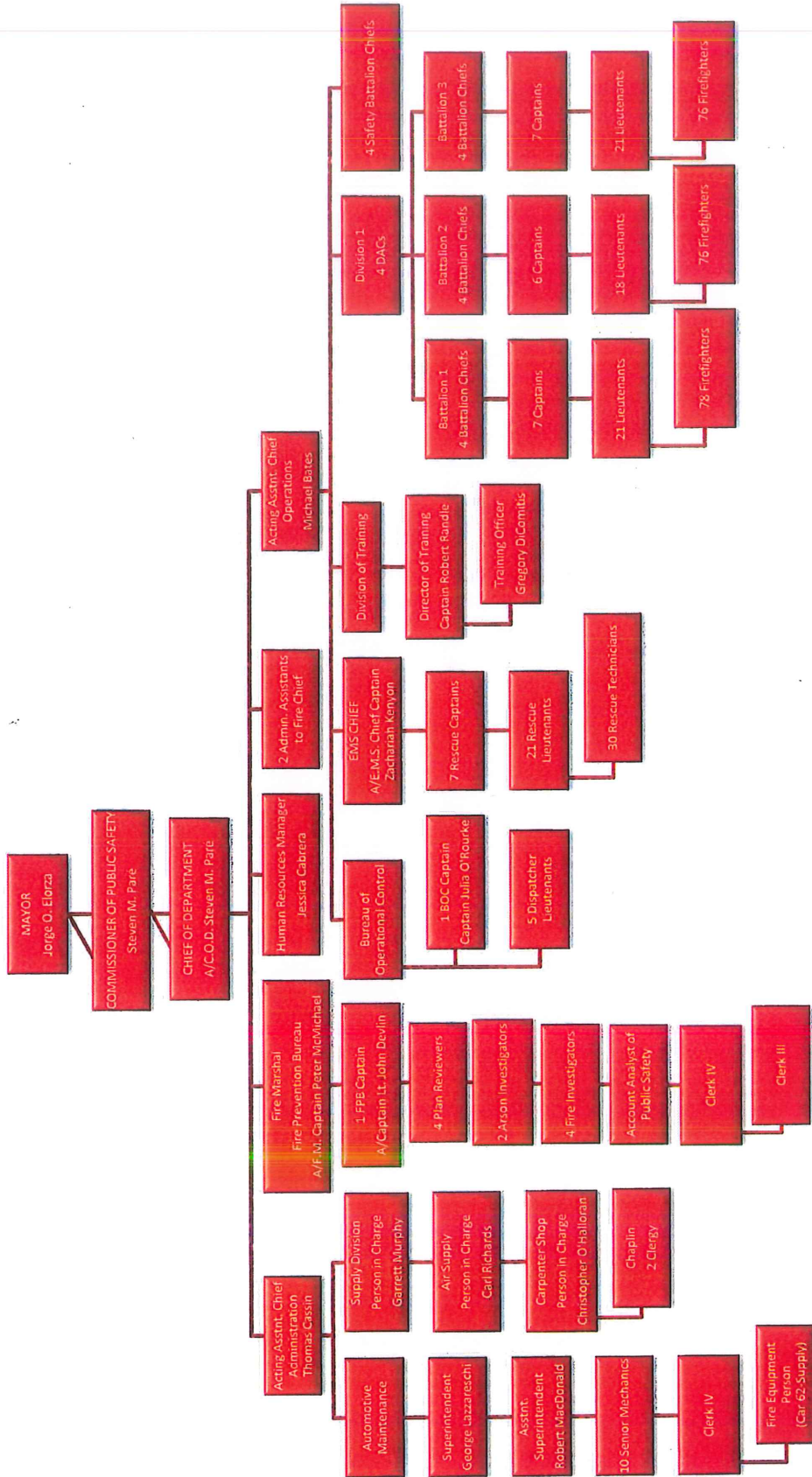
- The Department 51<sup>st</sup> Training Academy began on June 5<sup>th</sup>, 2017 running for a period of twenty-four (24) weeks.
- On October 21<sup>st</sup>, 2017 the written entrance examination was administered to 828 applicants for the 52<sup>nd</sup> Training Academy.
- On November 20, 2017 eighty-three (83) recruits were sworn in as new firefighters in a ceremony held at the Rhode Island Convention Center.
- Coordinated with the Department of Transportation (DOT) to close off the end of the Seekonk River Bridge to keep civilians from trespassing. The DOT is currently working on a long range plan to have it disassembled.
- Are in the preliminary stages of planning, equipping and training for active shooter and terrorist based responses. This is a joint operation with Providence Police Department.
- Provided rope rescue operations and technician training for members of Special Hazards 1.
- Began updating the Department's library of Standard Operating Procedures.
- Began updating the Department's Rules and Regulations.

- Provided an ice rescue training program to the companies responsible for ice rescue on all four shifts.
- Provided hydrogen fill station training to the companies that are first on scene at the hydrogen fill station.
- Re-instated monthly inspections of the stations quarters.
- Assigned a Safety Battalion Chief to each shift.
- Reorganized and created a digital map program of fire hydrant districts.
- Began a training program to certify new Marine 1 operators.
- Began a training program for Brook Street Firefighters as crewmen for Marine 1.
- Ratified a five-year contract with members of Local 799.
- Implemented a new shift schedule and reinstated the four platoon system.
- Deactivated Engine Company four at the Humbolt Avenue, Engine Company five at the Rochambeau Avenue station and ladder company four at the North Main Street station.





# PROVIDENCE FIRE DEPARTMENT





**PROVIDENCE FIRE DEPARTMENT  
TOTAL SERVICE IN 2017**

COMPANY	LOCATION		RUNS		MINUTES		HOURS
ENGINE 2	BRANCH AVENUE		3,737		67,201		1,120.0
ENGINE 3	WASHINGTON STREET		5,110		80,835		1,347.3
ENGINE 4*	ROCHAMBEAU AVE.		22		516		8.6
ENGINE 5*	HUMBOLDT STREET		14		378		6.3
ENGINE 6	HARTFORD AVENUE		2,117		40,065		667.8
ENGINE 7	NORTH MAIN STREET		3,392		61,616		1,026.9
ENGINE 8	MESSER STREET		4,089		61,989		1,033.2
ENGINE 9	BROOK STREET		2,730		51,543		859.1
ENGINE 10	BROAD STREET		2,906		48,466		807.8
ENGINE 11	RESERVOIR AVENUE		2,152		41,202		686.7
ENGINE 12	ADMIRAL STREET		4,413		67,245		1,120.8
ENGINE 13	ALLENS AVENUE		2,221		40,116		668.6
ENGINE 14	ATWELLS AVENUE		3,312		53,248		887.5
ENGINE 15	MT. PLEASANT AVE.		3,255		65,441		1,090.7
SPECIAL HAZARDS 1	WASHINGTON STREET		1,679		34,655		577.6
LADDER 1	WASHINGTON STREET		2,393		38,199		636.7
LADDER 2	MESSER STREET		1,670		32,912		548.5
LADDER 3	ADMIRAL STREET		1,477		24,670		411.2
LADDER 4 *	NORTH MAIN STREET		24		241		4.0
LADDER 5	BROAD STREET		1,431		26,892		448.2
LADDER 6	ATWELLS AVENUE		1,829		28,203		470.1
LADDER 7	BRANCH AVENUE		1,667		29,494		491.6
LADDER 8	BROOK STREET		1,661		30,446		507.4
<b>TOTALS</b>			<b>53,301</b>		<b>925,573</b>		<b>15,426.2</b>

Note: Engine 4 & 5 and Ladder 4 were decommissioned on January 7th, 2017.

**PROVIDENCE FIRE DEPARTMENT  
BOX ALARMS IN 2017**

COMPANY	LOCATION	FIRE	FALSE	OTHER	TOTAL
ENGINE 2	BRANCH AVENUE	29	514	442	985
ENGINE 3	WASHINGTON STREET	101	431	1,589	2,121
ENGINE 4*	ROCHAMBEAU AVE.	0	2	3	5
ENGINE 5*	HUMBOLDT STREET	3	0	9	12
ENGINE 6	HARTFORD AVENUE	28	239	126	393
ENGINE 7	NORTH MAIN STREET	161	446	546	1,153
ENGINE 8	MESSER STREET	52	633	294	979
ENGINE 9	BROOK STREET	44	561	464	1,069
ENGINE 10	BROAD STREET	92	308	409	809
ENGINE 11	RESERVOIR AVENUE	103	306	225	634
ENGINE 12	ADMIRAL STREET	22	546	272	840
ENGINE 13	ALLENS AVENUE	70	128	968	1,166
ENGINE 14	ATWELLS AVENUE	88	527	406	1,021
ENGINE 15	MT. PLEASANT AVE.	76	464	463	1,003
SPECIAL HAZARDS 1	WASHINGTON STREET	48	6	221	275
LADDER 1	WASHINGTON STREET	60	712	539	1,311
LADDER 2	MESSER STREET	45	281	324	650
LADDER 3	ADMIRAL STREET	28	164	269	461
LADDER 4*	NORTH MAIN STREET	1	10	5	16
LADDER 5	BROAD STREET	59	357	228	644
LADDER 6	ATWELLS AVENUE	79	366	430	875
LADDER 7	BRANCH AVENUE	38	369	531	938
LADDER 8	BROOK STREET	49	260	569	878
<b>TOTALS</b>		<b>1,276</b>	<b>7,630</b>	<b>9,332</b>	<b>18,238</b>

**PROVIDENCE FIRE DEPARTMENT  
NUMBER OF EMS RUNS IN 2017**

COMPANY	LOCATION	CARDIAC	MEDICAL	OTHER	TOTAL
ENGINE 2	BRANCH AVENUE	392	1,305	384	2,081
ENGINE 3	WASHINGTON STREET	128	1,585	919	2,632
ENGINE 4*	ROCHAMBEAU AVE.	4	7	1	12
ENGINE 5*	HUMBOLDT STREET	0	4	0	4
ENGINE 6	HARTFORD AVENUE	113	793	386	1,292
ENGINE 7	NORTH MAIN STREET	131	894	365	1,390
ENGINE 8	MESSER STREET	604	1,592	166	2,362
ENGINE 9	BROOK STREET	79	865	93	1,037
ENGINE 10	BROAD STREET	206	1,064	370	1,640
ENGINE 11	RESERVOIR AVENUE	105	763	220	1,088
ENGINE 12	ADMIRAL STREET	368	2,000	305	2,673
ENGINE 13	ALLENS AVENUE	127	682	418	1,227
ENGINE 14	ATWELLS AVENUE	122	986	423	1,531
ENGINE 15	MT. PLEASANT AVE.	251	1,387	322	1,960
SPECIAL HAZARDS 1	WASHINGTON STREET	3	24	27	54
LADDER 1	WASHINGTON STREET	20	247	145	412
LADDER 2	MESSER STREET	21	193	62	276
LADDER 3	ADMIRAL STREET	28	222	164	414
LADDER 4*	NORTH MAIN STREET	0	2	0	2
LADDER 5	BROAD STREET	20	114	51	185
LADDER 6	ATWELLS AVENUE	6	95	111	212
LADDER 7	BRANCH AVENUE	27	177	186	390
LADDER 8	BROOK STREET	5	89	82	176
<b>TOTALS</b>		<b>2,760</b>	<b>15,090</b>	<b>5,200</b>	<b>23,050</b>
Note: Engine 4 & 5 and Ladder 4 were decommissioned on January 7th, 2017.					



**PROVIDENCE FIRE DEPARTMENT**  
**NUMBER OF FIRE RUNS IN 2017**

COMPANY	LOCATION	STRUCTURE	VEHICLE	OTHER	TOTAL
ENGINE 2	BRANCH AVENUE	32	21	113	166
ENGINE 3	WASHINGTON STREET	102	18	136	256
ENGINE 4*	ROCHAMBEAU AVE.	2	0	1	3
ENGINE 5*	HUMBOLDT STREET	2	0	1	3
ENGINE 6	HARTFORD AVENUE	58	14	94	166
ENGINE 7	NORTH MAIN STREET	199	20	169	388
ENGINE 8	MESSER STREET	123	8	79	210
ENGINE 9	BROOK STREET	50	4	73	127
ENGINE 10	BROAD STREET	138	15	67	220
ENGINE 11	RESERVOIR AVENUE	89	9	60	158
ENGINE 12	ADMIRAL STREET	53	8	92	153
ENGINE 13	ALLENS AVENUE	43	10	59	112
ENGINE 14	ATWELLS AVENUE	96	16	173	285
ENGINE 15	MT. PLEASANT AVE.	77	11	89	177
SPECIAL HAZARDS 1	WASHINGTON STREET	154	11	175	340
LADDER 1	WASHINGTON STREET	96	20	97	213
LADDER 2	MESSER STREET	97	19	93	209
LADDER 3	ADMIRAL STREET	82	10	48	140
LADDER 4*	NORTH MAIN STREET	5	0	0	5
LADDER 5	BROAD STREET	131	31	74	236
LADDER 6	ATWELLS AVENUE	130	25	168	323
LADDER 7	BRANCH AVENUE	42	24	64	130
LADDER 8	BROOK STREET	57	6	86	149
<b>TOTALS</b>		<b>1,858</b>	<b>300</b>	<b>2,011</b>	<b>4,169</b>



**PROVIDENCE FIRE DEPARTMENT**  
**PUMP TIME IN 2017**

COMPANY		LOCATION		TOTAL PUMP MINUTES		TOTAL HOURS
ENGINE 2		BRANCH AVENUE		992		16.53
ENGINE 3		WASHINGTON STREET		967		16.12
ENGINE 4*		ROCHAMBEAU AVE.		52		0.87
ENGINE 5*		HUMBOLDT STREET		165		2.75
ENGINE 6		HARTFORD AVENUE		1,349		22.48
ENGINE 7		NORTH MAIN STREET		1,580		26.33
ENGINE 8		MESSER STREET		1,499		24.98
ENGINE 9		BROOK STREET		1,077		17.95
ENGINE 10		BROAD STREET		1,961		32.68
ENGINE 11		RESERVOIR AVENUE		453		7.55
ENGINE 12		ADMIRAL STREET		1,620		27.00
ENGINE 13		ALLENS AVENUE		447		7.45
ENGINE 14		ATWELLS AVENUE		2,103		35.05
ENGINE 15		MT. PLEASANT AVE.		984		16.40
<b>TOTALS</b>				<b>15,249</b>		<b>254.15</b>

**PROVIDENCE FIRE DEPARTMENT  
NUMBER OF FALSE ALARMS IN 2017**

COMPANY	LOCATION	MALICIOUS	OTHER	TOTAL
ENGINE 2	BRANCH AVENUE	188	119	307
ENGINE 3	WASHINGTON STREET	222	86	308
ENGINE 4*	ROCHAMBEAU AVE.	0	0	0
ENGINE 5*	HUMBOLDT STREET	0	0	0
ENGINE 6	HARTFORD AVENUE	120	14	134
ENGINE 7	NORTH MAIN STREET	131	32	163
ENGINE 8	MESSER STREET	302	41	343
ENGINE 9	BROOK STREET	67	29	96
ENGINE 10	BROAD STREET	121	19	140
ENGINE 11	RESERVOIR AVENUE	167	163	330
ENGINE 12	ADMIRAL STREET	439	27	466
ENGINE 13	ALLENS AVENUE	61	10	71
ENGINE 14	ATWELLS AVENUE	319	38	357
ENGINE 15	MT. PLEASANT AVE.	290	63	353
SPECIAL HAZARDS 1	WASHINGTON STREET	11	2	13
LADDER 1	WASHINGTON STREET	105	29	134
LADDER 2	MESSER STREET	68	145	213
LADDER 3	ADMIRAL STREET	96	19	115
LADDER 4*	NORTH MAIN STREET	0	11	11
LADDER 5	BROAD STREET	81	20	101
LADDER 6	ATWELLS AVENUE	114	18	132
LADDER 7	BRANCH AVENUE	66	177	243
LADDER 8	BROOK STREET	41	28	69
<b>TOTALS</b>		<b>3,009</b>	<b>1,090</b>	<b>4,099</b>

Note: Engine 4 & 5 and Ladder 4 were decommissioned on January 7th, 2017.

**PROVIDENCE FIRE DEPARTMENT  
NUMBER OF GOOD INTENT RUNS IN 2017**

COMPANY	LOCATION	SMOKE SCARE	OTHER	TOTALS
ENGINE 2	BRANCH AVENUE	47	79	126
ENGINE 3	WASHINGTON STREET	54	140	194
ENGINE 4*	ROCHAMBEAU AVE.	0	0	0
ENGINE 5*	HUMBOLDT STREET	0	1	1
ENGINE 6	HARTFORD AVENUE	18	74	92
ENGINE 7	NORTH MAIN STREET	50	65	115
ENGINE 8	MESSER STREET	43	122	165
ENGINE 9	BROOK STREET	31	71	102
ENGINE 10	BROAD STREET	19	61	80
ENGINE 11	RESERVOIR AVENUE	21	78	99
ENGINE 12	ADMIRAL STREET	56	95	151
ENGINE 13	ALLENS AVENUE	31	40	71
ENGINE 14	ATWELLS AVENUE	69	85	154
ENGINE 15	MT. PLEASANT AVE.	46	83	129
SPECIAL HAZARDS 1	WASHINGTON STREET	89	121	210
LADDER 1	WASHINGTON STREET	58	38	96
LADDER 2	MESSER STREET	79	34	113
LADDER 3	ADMIRAL STREET	37	45	82
LADDER 4*	NORTH MAIN STREET	0	0	0
LADDER 5	BROAD STREET	43	35	78
LADDER 6	ATWELLS AVENUE	30	45	75
LADDER 7	BRANCH AVENUE	54	41	95
LADDER 8	BROOK STREET	63	70	133
<b>TOTALS</b>		<b>938</b>	<b>1,423</b>	<b>2,361</b>



**PROVIDENCE FIRE DEPARTMENT  
NUMBER OF SPILL AND LEAK RUNS IN 2017**

COMPANY	LOCATION	SPILL AND LEAK RUNS	OTHER	TOTALS
ENGINE 2	BRANCH AVENUE	15	9	24
ENGINE 3	WASHINGTON STREET	14	13	27
ENGINE 4*	ROCHAMBEAU AVE.	1	0	1
ENGINE 5*	HUMBOLDT STREET	0	0	0
ENGINE 6	HARTFORD AVENUE	13	2	15
ENGINE 7	NORTH MAIN STREET	12	5	17
ENGINE 8	MESSER STREET	9	3	12
ENGINE 9	BROOK STREET	12	9	21
ENGINE 10	BROAD STREET	6	4	10
ENGINE 11	RESERVOIR AVENUE	6	4	10
ENGINE 12	ADMIRAL STREET	22	8	30
ENGINE 13	ALLENS AVENUE	9	2	11
ENGINE 14	ATWELLS AVENUE	15	4	19
ENGINE 15	MT. PLEASANT AVE.	9	3	12
SPECIAL HAZARDS 1	WASHINGTON STREET	192	59	251
LADDER 1	WASHINGTON STREET	22	13	35
LADDER 2	MESSER STREET	22	19	41
LADDER 3	ADMIRAL STREET	48	22	70
LADDER 4*	NORTH MAIN STREET	0	0	0
LADDER 5	BROAD STREET	21	17	38
LADDER 6	ATWELLS AVENUE	65	25	90
LADDER 7	BRANCH AVENUE	15	33	48
LADDER 8	BROOK STREET	19	12	31
<b>TOTALS</b>		<b>547</b>	<b>266</b>	<b>813</b>
<b>Note: Engine 4 &amp; 5 and Ladder 4 were decommissioned on January 7th, 2017.</b>				



**PROVIDENCE FIRE DEPARTMENT**  
**NUMBER OF LADDERS USED BY FOOTAGE IN 2017**

COMPANY	LOCATION	AERIAL	EXTENSION	STRAIGHT	FOLDING	ROOF	COMBO	TOTAL
ENGINE 2	BRANCH AVENUE	0	56	0	18	0	0	74
ENGINE 3	WASHINGTON STREET	0	28	0	30	0	0	58
ENGINE 4*	ROCHAMBEAU AVE.	0	0	0	0	0	0	-
ENGINE 5*	HUMBOLDT STREET	0	0	0	0	0	0	-
ENGINE 6	HARTFORD AVENUE	0	0	0	20	0	0	20
ENGINE 7	NORTH MAIN STREET	0	48	0	29	18	0	95
ENGINE 8	MESSER STREET	0	9	0	30	30	0	69
ENGINE 9	BROOK STREET	0	80	0	46	30	0	156
ENGINE 10	BROAD STREET	0	85	0	8	0	0	93
ENGINE 11	RESERVOIR AVENUE	0	24	0	0	0	0	24
ENGINE 12	ADMIRAL STREET	0	0	0	20	14	0	34
ENGINE 13	ALLENS AVENUE	0	63	0	8	16	0	87
ENGINE 14	ATWELLS AVENUE	0	48	0	28	30	0	106
ENGINE 15	MT. PLEASANT AVE.	0	135	0	10	0	0	145
SPECIAL HAZARDS 1	WASHINGTON STREET	0	0	0	0	0	0	0
LADDER 1	WASHINGTON STREET	2,535	369	133	569	106	42	3,754
LADDER 2	MESSER STREET	3,465	454	120	279	216	24	4,558
LADDER 3	ADMIRAL STREET	2,460	201	142	140	46	10	2,999
LADDER 4*	NORTH MAIN STREET	0	28	20	8	0	0	56
LADDER 5	BROAD STREET	5,350	283	192	162	118	0	6,105
LADDER 6	ATWELLS AVENUE	5,925	364	156	286	156	38	6,925
LADDER 7	BRANCH AVENUE	1,050	182	166	136	16	0	1,550
LADDER 8	BROOK STREET	3,370	453	279	418	174	25	4,719
<b>TOTALS</b>		<b>24,155</b>	<b>2,910</b>	<b>1,208</b>	<b>2,245</b>	<b>970</b>	<b>139</b>	<b>31,627</b>

Note: Engine 4 & 5 and Ladder 4 were decommissioned on January 7th, 2017.

PROVIDENCE FIRE DEPARTMENT  
OTHER EQUIPMENT USED IN 2017

COMPANY	LOCATION	SCBA	MASTER APPLIANCE	EXTINGUISHER	FOAM	OXYGEN	AED	GENERATOR	PORT PUMP	FIRST AID BAG	CO2 METER	SMOKE EJECTOR	SCENE LIGHT	JAWS	K12	Q VENT	MISC TOOLS	TOTAL
ENGINE 2	BRANCH AVENUE	495	0	13	0	395	50	0	1	1,572	11	0	0	0	0	0	1,168	3,705
ENGINE 3	WASHINGTON STREET	1,216	1	7	1	92	32	1	0	2,251	14	0	0	0	0	0	2,337	5,952
ENGINE 4	ROCHAMBEAU AVE.	7	0	1	0	5	1	0	0	12	0	0	0	0	0	0	14	40
ENGINE 5	HUMBOLDT STREET	8	1	0	0	0	0	0	0	4	0	0	0	0	0	0	8	21
ENGINE 6	HARTFORD AVENUE	475	0	15	0	200	12	0	1	1,124	12	0	0	0	0	0	1,500	3,339
ENGINE 7	NORTH MAIN STREET	1,755	1	13	4	115	21	0	1	1,046	7	0	0	0	0	0	1,213	4,176
ENGINE 8	MESSER STREET	963	1	14	0	521	19	1	1	2,225	7	0	0	0	0	0	1,709	5,461
ENGINE 9	BROAD STREET	989	1	12	0	139	30	4	1	561	9	0	0	0	0	0	749	2,495
ENGINE 10	BROAD STREET	3,986	0	32	0	152	95	0	0	1,327	1	0	0	0	0	0	769	6,362
ENGINE 11	RESERVOIR AVENUE	378	0	5	0	115	8	0	0	797	1	0	0	0	0	0	1,006	2,310
ENGINE 12	ADMIRAL STREET	512	0	24	0	299	33	0	1	1,874	7	0	0	0	0	0	2,485	5,235
ENGINE 13	ALLENS AVENUE	312	0	3	1	119	20	1	2	952	10	0	0	0	0	0	438	1,858
ENGINE 14	ATWELLS AVENUE	722	1	6	1	165	3	1	1	774	3	0	0	0	0	0	505	2,182
ENGINE 15	MT. PLEASANT AVE.	337	0	8	0	230	68	0	3	1,329	39	0	0	0	0	0	1,059	3,073
SPECIAL HAZARDS 1 (*)	WASHINGTON STREET	913	0	0	0	0	0	0	0	0	0	0	0	0	0	0	1,301	2,236
LADDER 1	WASHINGTON STREET	1,295	2	40	0	90	0	28	2	307	63	21	38	3	13	9	1,187	3,098
LADDER 2	MESSER STREET	1,431	1	32	0	75	0	2	1	180	81	22	10	0	11	20	867	2,733
LADDER 3	ADMIRAL STREET	319	0	14	0	80	0	5	2	241	162	33	24	0	1	10	639	1,530
LADDER 4	NORTH MAIN STREET	6	0	0	0	0	0	0	0	2	0	0	0	0	0	0	14	24
LADDER 5	BROAD STREET	1,229	0	72	0	26	0	2	2	120	127	22	15	16	14	19	967	2,631
LADDER 6	ATWELLS AVENUE	850	0	89	0	19	0	4	4	81	132	35	25	0	13	21	826	2,099
LADDER 7	BRANCH AVENUE	370	0	11	0	59	14	1	0	218	80	14	84	6	3	4	632	1,482
LADDER 8	BROOK STREET	1,339	2	123	0	30	0	7	1	118	96	40	72	0	8	12	832	2,680
TOTALS		19,907	11	534	7	2,926	392	57	24	17,115	862	187	270	47	63	95	22,225	64,722

(\*) Special Hazards 1 deployed a thermal imaging camera at 158 incidents, conducted 14 water and 4 rope rescues, and performed 296 extractions.

**PROVIDENCE FIRE DEPARTMENT**  
**NUMBER OF NON-FIRE RUNS IN 2017**

COMPANY	LOCATION	LOCK OUT/IN	WATER EMERGENCIES	ACCIDENTAL	DEFECTIVE	OTHER	TOTAL
ENGINE 2	BRANCH AVENUE	18	30	461	148	242	899
ENGINE 3	WASHINGTON STREET	34	29	598	268	550	1,479
ENGINE 4*	ROCHAMBEAU AVE.	1	-	3	1	1	6
ENGINE 5*	HUMBOLDT STREET	1	-	4	-	-	5
ENGINE 6	HARTFORD AVENUE	9	18	187	62	93	369
ENGINE 7	NORTH MAIN STREET	54	39	558	293	259	1,203
ENGINE 8	MESSER STREET	17	17	451	251	117	853
ENGINE 9	BROOK STREET	24	26	619	321	294	1,284
ENGINE 10	BROAD STREET	14	12	356	201	142	725
ENGINE 11	RESERVOIR AVENUE	5	13	200	79	86	383
ENGINE 12	ADMIRAL STREET	26	30	399	193	82	730
ENGINE 13	ALLENS AVENUE	5	23	235	153	253	669
ENGINE 14	ATWELLS AVENUE	7	38	509	237	85	876
ENGINE 15	MT. PLEASANT AVE.	16	23	274	126	86	525
SPECIAL HAZARDS 1	WASHINGTON STREET	215	8	11	54	406	694
LADDER 1	WASHINGTON STREET	89	26	547	368	423	1,453
LADDER 2	MESSER STREET	73	4	389	185	81	732
LADDER 3	ADMIRAL STREET	79	11	246	164	86	586
LADDER 4*	NORTH MAIN STREET	1	-	2	-	3	6
LADDER 5	BROAD STREET	75	12	318	191	125	721
LADDER 6	ATWELLS AVENUE	103	19	430	172	191	915
LADDER 7	BRANCH AVENUE	74	10	272	208	151	715
LADDER 8	BROOK STREET	67	24	426	295	234	1,046
<b>TOTALS</b>		<b>1,007</b>	<b>412</b>	<b>7,495</b>	<b>3,970</b>	<b>3,990</b>	<b>16,874</b>

Note: Engine 4 & 5 and Ladder 4 were decommissioned on January 7th, 2017.



**PROVIDENCE FIRE DEPARTMENT  
HOSE USED BY FOOTAGE IN 2017**

COMPANY	LOCATION	5 IN. HOSE	3 IN. HOSE	2.5 IN HOSE	1.75 IN. HOSE	.75 IN HOSE	TOTAL
ENGINE 2	BRANCH AVENUE	1,375	0	0	8,850	2,025	12,250
ENGINE 3	WASHINGTON STREET	2,100	175	550	32,150	2,260	37,235
ENGINE 4*	ROCHAMBEAU AVE.	0	0	0	400	0	400
ENGINE 5*	HUMBOLDT STREET	0	20	0	50	0	70
ENGINE 6	HARTFORD AVENUE	2,200	100	0	9,500	3,150	14,950
ENGINE 7	NORTH MAIN STREET	3,500	1,200	350	27,400	5,280	37,730
ENGINE 8	MESSER STREET	4,600	500	600	30,334	5,749	41,783
ENGINE 9	BROOK STREET	900	300	0	23,403	4,625	29,228
ENGINE 10	BROAD STREET	2,365	100	500	20,400	9,275	32,640
ENGINE 11	RESERVOIR AVENUE	2,050	100	0	12,450	1,730	16,330
ENGINE 12	ADMIRAL STREET	2,325	800	0	14,450	4,150	21,725
ENGINE 13	ALLENS AVENUE	1,150	400	150	4,550	2,025	8,275
ENGINE 14	ATWELLS AVENUE	7,650	750	0	15,350	5,550	29,300
ENGINE 15	MT. PLEASANT AVE.	1,000	0	0	8,050	2,650	11,700
SPECIAL HAZARDS 1	WASHINGTON STREET	0	0	0	0	0	0
LADDER 1	WASHINGTON STREET	0	0	0	0	0	0
LADDER 2	MESSER STREET	0	0	0	0	0	0
LADDER 3	ADMIRAL STREET	0	0	0	0	0	0
LADDER 4*	NORTH MAIN STREET	0	0	0	0	0	0
LADDER 5	BROAD STREET	0	0	0	0	0	0
LADDER 6	ATWELLS AVENUE	0	0	0	0	0	0
LADDER 7	BRANCH AVENUE	0	0	0	0	0	0
LADDER 8	BROOK STREET	0	0	0	0	0	0
TOTALS		31,215	4,445	2,150	207,337	48,469	293,616

Note: Engine 4 & 5 and Ladder 4 were decommissioned on January 7th, 2017.



# PROVIDENCE FIRE DEPARTMENT ANNUAL REPORT

## ANNUAL TOTALS

Service Time Minutes	Runs
67201	3737

## Reporting Engine Company

Engine 2

## Annual Report for 2017

	Minutes	Runs
<b>FIRE</b>	<b>4666</b>	<b>166</b>
Structure	1769	32
Vehicle	794	21
Other	2103	113
<b>EMS</b>	<b>44858</b>	<b>2081</b>
Cardiac	10208	392
Medical Aid	27351	1305
Other	7299	384
<b>HAZMAT</b>	<b>659</b>	<b>24</b>
Spill/Leak	303	15
Other	356	9
<b>NON-FIRE</b>	<b>11832</b>	<b>899</b>
Lockout/In	255	18
Water Emer	532	30
Accidental	5742	461
Defective	2228	148
Other	3075	242
<b>GOOD INTENT</b>	<b>1505</b>	<b>126</b>
Smoke Scare	662	47
Other	843	79
<b>FALSE</b>	<b>2887</b>	<b>307</b>
Malicious	1586	188
Other	1301	119
<b>RELOCATION</b>	<b>158</b>	<b>3</b>

## EQUIPMENT USED

Pump Minutes 992

## Nbr of Feet Used

Hose 5" 1375

Hose 3" 0

Hose 2.5" 0

Hose 1.75" 8850

Hose .75" 2025

## Nbr Used

Scba 495

## Nbr of Times Used

Master Appl 0

Extinguisher 13

Foam 0

Oxygen 395

AED 50

Generator 0

Port Pump 1

First Aid Bag 1572

CO2 Meter 11

Misc Tools 1168

## Nbr of Feet Used

Ldr Extension 56

Ldr Roof 0

Ldr Folding 18

## Box Type

Fire 29

False 514

Other 442

# PROVIDENCE FIRE DEPARTMENT ANNUAL REPORT

ANNUAL TOTALS	
Service Time Minutes	Runs
80835	5110

## Reporting Engine Company

Engine 3

## Annual Report for 2017

	Minutes	Runs
<b>FIRE</b>	<b>7341</b>	<b>256</b>
Structure	4526	102
Vehicle	492	18
Other	2323	136
<b>EMS</b>	<b>44658</b>	<b>2632</b>
Cardiac	2896	128
Medical Aid	28141	1585
Other	13621	919
<b>HAZMAT</b>	<b>1159</b>	<b>27</b>
Spill/Leak	448	14
Other	711	13
<b>NON-FIRE</b>	<b>22101</b>	<b>303</b>
Lockout/In	723	34
Water Emer	560	29
Accidental	7117	598
Defective	3779	268
Other	9922	550
<b>GOOD INTENT</b>	<b>2108</b>	<b>194</b>
Smoke Scare	621	54
Other	1487	140
<b>FALSE</b>	<b>2577</b>	<b>308</b>
Malicious	1575	222
Other	1002	86
<b>RELOCATION</b>	<b>2</b>	<b>1</b>

## EQUIPMENT USED

Pump Minutes	967
<b>Nbr of Feet Used</b>	
Hose 5"	2100
Hose 3"	175
Hose 2.5"	550
Hose 1.75"	32150
Hose .75"	2260
<b>Nbr Used</b>	
Scba	1216
<b>Nbr of Times Used</b>	
Master Appl	1
Extinguisher	7
Foam	1
Oxygen	92
AED	32
Generator	1
Port Pump	0
FirstAid Bag	2251
CO2 Meter	14
Misc Tools	2337
<b>Nbr of Feet Used</b>	
Ldr Extension	28
Ldr Roof	0
Ldr Folding	20
<b>Box Type</b>	
Fire	101
False	431
Other	1589

# PROVIDENCE FIRE DEPARTMENT ANNUAL REPORT

ANNUAL TOTALS	
Service Time Minutes	Runs
516	22

## Reporting Engine Company

**Engine 4**

### Annual Report for 2017

	Minutes	Runs
<b>FIRE</b>	121	3
Structure	98	2
Vehicle	0	0
Other	23	1
<b>EMS</b>	295	12
Cardiac	124	4
Medical Aid	162	7
Other	9	1
<b>HAZMAT</b>	32	1
Spill/Leak	32	1
Other	0	0
<b>NON-FIRE</b>	68	6
Lockout/In	11	1
Water Emer	0	0
Accidental	36	3
Defective	8	1
Other	13	1
<b>GOOD INTENT</b>	0	0
Smoke Scare	0	0
Other	0	0
<b>FALSE</b>	0	0
Malicious	0	0
Other	0	0
<b>RELOCATION</b>	0	0

### EQUIPMENT USED

Pump Minutes 52

	Nbr of Feet Used
Hose 5"	0
Hose 3"	0
Hose 2.5"	0
Hose 1.75"	400
Hose .75"	0

	Nbr Used
Scba	7

	Nbr of Times Used
Master Appl	0
Extinguisher	1
Foam	0
Oxygen	5
AED	1
Generator	0
Port Pump	0
FirstAid Bag	12
CO2 Meter	0
Misc Tools	14

	Nbr of Feet Used
Ldr Extension	0
Ldr Roof	0
Ldr Folding	0

### Box Type

Fire	0
False	2
Other	3



# PROVIDENCE FIRE DEPARTMENT ANNUAL REPORT

ANNUAL TOTALS	
Service Time Minutes	Runs
378	14

## Reporting Engine Company

**Engine 5**

### Annual Report for 2017

	Minutes	Runs
<b>FIRE</b>	<b>190</b>	<b>3</b>
Structure	145	2
Vehicle	0	0
Other	45	1
<b>EMS</b>	<b>95</b>	<b>4</b>
Cardiac	0	0
Medical Aid	95	4
Other	0	0
<b>HAZMAT</b>	<b>0</b>	<b>0</b>
Spill/Leak	0	0
Other	0	0
<b>NON-FIRE</b>	<b>72</b>	<b>5</b>
Lockout/In	23	1
Water Emer	0	0
Accidental	49	4
Defective	0	0
Other	0	0
<b>GOOD INTENT</b>	<b>18</b>	<b>1</b>
Smoke Scare	0	0
Other	18	1
<b>FALSE</b>	<b>0</b>	<b>0</b>
Malicious	0	0
Other	0	0
<b>RELOCATION</b>	<b>0</b>	<b>0</b>

### EQUIPMENT USED

Pump Minutes 165

	Nbr of Feet Used
Hose 5"	0
Hose 3"	20
Hose 2.5"	0
Hose 1.75"	50
Hose .75"	0

	Nbr Used
Scba	8

	Nbr of Times Used
Master Appl	1
Extinguisher	0
Foam	0
Oxygen	0
AED	0
Generator	0
Port Pump	0
First Aid Bag	4
CO2 Meter	0
Misc Tools	8

	Nbr of Feet Used
Ldr Extension	0
Ldr Roof	0
Ldr Folding	0

### Box Type

Fire	3
False	0
Other	9

# PROVIDENCE FIRE DEPARTMENT ANNUAL REPORT

ANNUAL TOTALS	
Service Time Minutes	Runs
40065	2117

## Reporting Engine Company

**Engine 6**

### Annual Report for 2017

	Minutes	Runs
<b>FIRE</b>	<b>4806</b>	<b>166</b>
Structure	3007	58
Vehicle	491	14
Other	1308	94
<b>EMS</b>	<b>25506</b>	<b>1292</b>
Cardiac	2370	113
Medical Aid	15125	793
Other	8011	386
<b>HAZMAT</b>	<b>377</b>	<b>15</b>
Spill/Leak	346	13
Other	31	2
<b>NON-FIRE</b>	<b>5172</b>	<b>369</b>
Lockout/In	112	9
Water Emer	369	18
Accidental	2320	187
Defective	1038	62
Other	1333	93
<b>GOOD INTENT</b>	<b>1259</b>	<b>92</b>
Smoke Scare	210	18
Other	1049	74
<b>FALSE</b>	<b>1037</b>	<b>134</b>
Malicious	886	120
Other	151	14
<b>RELOCATION</b>	<b>0</b>	<b>0</b>

### EQUIPMENT USED

Pump Minutes 1349

#### Nbr of Feet Used

Hose 5" 2200

Hose 3" 100

Hose 2.5" 0

Hose 1.75" 9500

Hose .75" 3150

#### Nbr Used

Scba 475

#### Nbr of Times Used

Master Appl 0

Extinguisher 15

Foam 0

Oxygen 200

AED 12

Generator 0

Port Pump 1

FirstAid Bag 1124

CO2 Meter 12

Misc Tools 1500

#### Nbr of Feet Used

Ldr Extension 0

Ldr Roof 0

Ldr Folding 20

### Box Type

Fire 28

False 239

Other 126

# PROVIDENCE FIRE DEPARTMENT ANNUAL REPORT

## ANNUAL TOTALS

Service  
Time Minutes

61616

Runs

3392

## Reporting Engine Company

Engine 7

## Annual Report for 2017

	Minutes	Runs
<b>FIRE</b>	<b>10374</b>	<b>388</b>
Structure	7121	199
Vehicle	550	20
Other	2703	169
<b>EMS</b>	<b>28480</b>	<b>1390</b>
Cardiac	3397	131
Medical Aid	17953	894
Other	7130	365
<b>HAZMAT</b>	<b>439</b>	<b>17</b>
Spill/Leak	316	12
Other	123	5
<b>NON-FIRE</b>	<b>17385</b>	<b>2103</b>
Lockout/In	1527	54
Water Emer	905	39
Accidental	6828	558
Defective	4444	293
Other	3681	259
<b>GOOD INTENT</b>	<b>1481</b>	<b>115</b>
Smoke Scare	620	50
Other	861	65
<b>FALSE</b>	<b>1542</b>	<b>163</b>
Malicious	1231	131
Other	311	32
<b>RELOCATION</b>	<b>1449</b>	<b>21</b>

## EQUIPMENT USED

Pump Minutes 1580

### Nbr of Feet Used

Hose 5" 3500

Hose 3" 1200

Hose 2.5" 350

Hose 1.75" 27400

Hose .75" 5280

### Nbr Used

Scba 1755

### Nbr of Times Used

Master Appl 1

Extinguisher 13

Foam 4

Oxygen 115

AED 21

Generator 0

Port Pump 1

FirstAid Bag 1046

CO2 Meter 7

Misc Tools 1213

### Nbr of Feet Used

Ldr Extension 48

Ldr Roof 18

Ldr Folding 29

## Box Type

Fire 161

False 446

Other 546



# PROVIDENCE FIRE DEPARTMENT ANNUAL REPORT

## ANNUAL TOTALS

Service  
Time Minutes

61989

Runs

4089

## Reporting Engine Company

Engine 8

## Annual Report for 2017

	Minutes	Runs
<b>FIRE</b>	<b>6627</b>	<b>210</b>
Structure	5301	123
Vehicle	193	8
Other	1133	79
<b>EMS</b>	<b>39284</b>	<b>2362</b>
Cardiac	11035	604
Medical Aid	26008	1592
Other	2241	166
<b>HAZMAT</b>	<b>307</b>	<b>12</b>
Spill/Leak	172	9
Other	135	3
<b>NON-FIRE</b>	<b>10553</b>	<b>853</b>
Lockout/In	304	17
Water Emer	419	17
Accidental	4632	451
Defective	3354	251
Other	1844	117
<b>GOOD INTENT</b>	<b>1837</b>	<b>165</b>
Smoke Scare	499	43
Other	1338	122
<b>FALSE</b>	<b>2476</b>	<b>343</b>
Malicious	2082	302
Other	394	41
<b>RELOCATION</b>	<b>210</b>	<b>3</b>

## EQUIPMENT USED

Pump Minutes 1499

### Nbr of Feet Used

Hose 5" 4600

Hose 3" 500

Hose 2.5" 600

Hose 1.75" 30334

Hose .75" 5749

### Nbr Used

Scba 963

### Nbr of Times Used

Master Appl 1

Extinguisher 14

Foam 0

Oxygen 521

AED 19

Generator 1

Port Pump 1

FirstAid Bag 2225

CO2 Meter 7

Misc Tools 1709

### Nbr of Feet Used

Ldr Extension 9

Ldr Roof 30

Ldr Folding 30

## Box Type

Fire 52

False 633

Other 294

# PROVIDENCE FIRE DEPARTMENT ANNUAL REPORT

ANNUAL TOTALS	
Service Time Minutes	Runs
51543	2730

## Reporting Engine Company

Engine 9

### Annual Report for 2017

	Minutes	Runs
<b>FIRE</b>	<b>5203</b>	<b>127</b>
Structure	2307	50
Vehicle	142	4
Other	2754	73
<b>EMS</b>	<b>23213</b>	<b>1037</b>
Cardiac	2111	79
Medical Aid	19216	865
Other	1886	93
<b>HAZMAT</b>	<b>1075</b>	<b>21</b>
Spill/Leak	458	12
Other	617	9
<b>NON-FIRE</b>	<b>19057</b>	<b>303</b>
Lockout/In	542	24
Water Emer	813	26
Accidental	7676	619
Defective	5264	321
Other	4762	294
<b>GOOD INTENT</b>	<b>1625</b>	<b>102</b>
Smoke Scare	439	31
Other	1186	71
<b>FALSE</b>	<b>1009</b>	<b>96</b>
Malicious	648	67
Other	361	29
<b>RELOCATION</b>	<b>38</b>	<b>2</b>

## EQUIPMENT USED

Pump Minutes 1077

Nbr of Feet Used	
Hose 5"	900
Hose 3"	300
Hose 2.5"	0
Hose 1.75"	23403
Hose .75"	4625

Nbr Used	
Scba	989

Nbr of Times Used	
Master Appl	1
Extinguisher	12
Foam	0
Oxygen	139
AED	30
Generator	4
Port Pump	1
FirstAid Bag	561
CO2 Meter	9
Misc Tools	749

Nbr of Feet Used	
Ldr Extension	80
Ldr Roof	30
Ldr Folding	46

## Box Type

Fire	44
False	561
Other	464

# PROVIDENCE FIRE DEPARTMENT ANNUAL REPORT

ANNUAL TOTALS	
Service Time Minutes	Runs
48466	2906

## Reporting Engine Company

Engine 10

### Annual Report for 2017

	Minutes	Runs
<b>FIRE</b>	<b>6212</b>	<b>220</b>
Structure	4762	138
Vehicle	442	15
Other	1008	67
<b>EMS</b>	<b>29912</b>	<b>1640</b>
Cardiac	4328	206
Medical Aid	17214	1064
Other	8370	370
<b>HAZMAT</b>	<b>928</b>	<b>10</b>
Spill/Leak	782	6
Other	146	4
<b>NON-FIRE</b>	<b>8883</b>	<b>725</b>
Lockout/In	225	14
Water Emer	175	12
Accidental	3725	356
Defective	2842	201
Other	1916	142
<b>GOOD INTENT</b>	<b>844</b>	<b>80</b>
Smoke Scare	157	19
Other	687	61
<b>FALSE</b>	<b>1240</b>	<b>140</b>
Malicious	1014	121
Other	226	19
<b>RELOCATION</b>	<b>0</b>	<b>0</b>

## EQUIPMENT USED

Pump Minutes	1961
<b>Nbr of Feet Used</b>	
Hose 5"	2365
Hose 3"	100
Hose 2.5"	500
Hose 1.75"	20400
Hose .75"	9275
<b>Nbr Used</b>	
Scba	3986
<b>Nbr of Times Used</b>	
Master Appl	0
Extinguisher	32
Foam	0
Oxygen	152
AED	95
Generator	0
Port Pump	0
FirstAid Bag	1327
CO2 Meter	1
Misc Tools	769
<b>Nbr of Feet Used</b>	
Ldr Extension	85
Ldr Roof	0
Ldr Folding	8
<b>Box Type</b>	
Fire	92
False	308
Other	409



# PROVIDENCE FIRE DEPARTMENT ANNUAL REPORT

ANNUAL TOTALS	
Service Time Minutes	Runs
41202	2152

## Reporting Engine Company

Engine 11

### Annual Report for 2017

	Minutes	Runs
<b>FIRE</b>	<b>5216</b>	<b>153</b>
Structure	4078	89
Vehicle	169	9
Other	969	60
<b>EMS</b>	<b>22089</b>	<b>1088</b>
Cardiac	4100	105
Medical Aid	14254	763
Other	3735	220
<b>HAZMAT</b>	<b>380</b>	<b>10</b>
Spill/Leak	177	6
Other	203	4
<b>NON-FIRE</b>	<b>7021</b>	<b>383</b>
Lockout/In	1976	5
Water Emer	815	13
Accidental	2010	200
Defective	1144	79
Other	1076	86
<b>GOOD INTENT</b>	<b>1265</b>	<b>99</b>
Smoke Scare	394	21
Other	871	78
<b>FALSE</b>	<b>2595</b>	<b>330</b>
Malicious	1099	167
Other	1496	163
<b>RELOCATION</b>	<b>2366</b>	<b>29</b>

## EQUIPMENT USED

Pump Minutes	453
<b>Nbr of Feet Used</b>	
Hose 5"	2050
Hose 3"	100
Hose 2.5"	0
Hose 1.75"	12450
Hose .75"	1730
<b>Nbr Used</b>	
Scba	378
<b>Nbr of Times Used</b>	
Master Appl	0
Extinguisher	5
Foam	0
Oxygen	115
AED	8
Generator	0
Port Pump	0
FirstAid Bag	797
CO2 Meter	1
Misc Tools	1006
<b>Nbr of Feet Used</b>	
Ldr Extension	24
Ldr Roof	0
Ldr Folding	0
<b>Box Type</b>	
Fire	103
False	306
Other	225

# PROVIDENCE FIRE DEPARTMENT ANNUAL REPORT

ANNUAL TOTALS	
Service Time Minutes	Runs
67245	4413

## Reporting Engine Company

Engine 12

### Annual Report for 2017

	Minutes	Runs
<b>FIRE</b>	<b>4242</b>	<b>153</b>
Structure	2524	53
Vehicle	301	8
Other	1417	92
<b>EMS</b>	<b>46794</b>	<b>2673</b>
Cardiac	8398	368
Medical Aid	34001	2000
Other	4395	305
<b>HAZMAT</b>	<b>888</b>	<b>30</b>
Spill/Leak	645	22
Other	243	8
<b>NON-FIRE</b>	<b>9257</b>	<b>730</b>
Lockout/In	425	26
Water Emer	524	30
Accidental	4099	399
Defective	2830	193
Other	1379	82
<b>GOOD INTENT</b>	<b>1703</b>	<b>151</b>
Smoke Scare	675	56
Other	1028	95
<b>FALSE</b>	<b>3189</b>	<b>466</b>
Malicious	2900	439
Other	289	27
<b>RELOCATION</b>	<b>276</b>	<b>4</b>

## EQUIPMENT USED

Pump Minutes	1620
<b>Nbr of Feet Used</b>	
Hose 5"	2325
Hose 3"	800
Hose 2.5"	0
Hose 1.75"	14450
Hose .75"	4150
<b>Nbr Used</b>	
Scba	512
<b>Nbr of Times Used</b>	
Master Appl	0
Extinguisher	24
Foam	0
Oxygen	299
AED	33
Generator	0
Port Pump	1
FirstAid Bag	1874
CO2 Meter	7
Misc Tools	2485
<b>Nbr of Feet Used</b>	
Ldr Extension	0
Ldr Roof	14
Ldr Folding	20
<b>Box Type</b>	
Fire	22
False	546
Other	272

# PROVIDENCE FIRE DEPARTMENT ANNUAL REPORT

ANNUAL TOTALS	
Service Time Minutes	Runs
40116	2221

## Reporting Engine Company

**Engine 13**

### Annual Report for 2017

	Minutes	Runs
<b>FIRE</b>	<b>3156</b>	<b>112</b>
Structure	1890	43
Vehicle	382	10
Other	884	59
<b>EMS</b>	<b>23825</b>	<b>1227</b>
Cardiac	2675	127
Medical Aid	12852	682
Other	8298	418
<b>HAZMAT</b>	<b>356</b>	<b>11</b>
Spill/Leak	324	9
Other	32	2
<b>NON-FIRE</b>	<b>10854</b>	<b>669</b>
Lockout/In	69	5
Water Emer	556	23
Accidental	2583	235
Defective	2422	153
Other	5224	253
<b>GOOD INTENT</b>	<b>897</b>	<b>71</b>
Smoke Scare	397	31
Other	500	40
<b>FALSE</b>	<b>637</b>	<b>71</b>
Malicious	497	61
Other	140	10
<b>RELOCATION</b>	<b>8</b>	<b>1</b>

## EQUIPMENT USED

Pump Minutes	447
<b>Nbr of Feet Used</b>	
Hose 5"	1150
Hose 3"	400
Hose 2.5"	150
Hose 1.75"	4550
Hose .75"	2025
<b>Nbr Used</b>	
Scba	312
<b>Nbr of Times Used</b>	
Master Appl	0
Extinguisher	3
Foam	1
Oxygen	119
AED	20
Generator	1
Port Pump	2
FirstAid Bag	952
CO2 Meter	10
Misc Tools	438
<b>Nbr of Feet Used</b>	
Ldr Extension	63
Ldr Roof	16
Ldr Folding	8
<b>Box Type</b>	
Fire	70
False	128
Other	968



# PROVIDENCE FIRE DEPARTMENT ANNUAL REPORT

ANNUAL TOTALS	
Service Time Minutes	Runs
53248	3312

## Reporting Engine Company

Engine 14

## Annual Report for 2017

	Minutes	Runs
<b>FIRE</b>	<b>8552</b>	<b>285</b>
Structure	5512	96
Vehicle	413	16
Other	2627	173
<b>EMS</b>	<b>27314</b>	<b>1531</b>
Cardiac	2606	122
Medical Aid	17363	986
Other	7345	423
<b>HAZMAT</b>	<b>530</b>	<b>19</b>
Spill/Leak	323	15
Other	207	4
<b>NON-FIRE</b>	<b>11470</b>	<b>876</b>
Lockout/In	109	7
Water Emer	1121	38
Accidental	5743	509
Defective	3383	237
Other	1114	85
<b>GOOD INTENT</b>	<b>1975</b>	<b>154</b>
Smoke Scare	829	69
Other	1146	85
<b>FALSE</b>	<b>2809</b>	<b>357</b>
Malicious	2424	319
Other	385	38
<b>RELOCATION</b>	<b>183</b>	<b>5</b>

## EQUIPMENT USED

Pump Minutes	2103
<b>Nbr of Feet Used</b>	
Hose 5"	7650
Hose 3"	750
Hose 2.5"	0
Hose 1.75"	15350
Hose .75"	5550
<b>Nbr Used</b>	
Scba	722
<b>Nbr of Times Used</b>	
Master Appl	1
Extinguisher	6
Foam	1
Oxygen	165
AED	3
Generator	1
Port Pump	1
FirstAid Bag	774
CO2 Meter	3
Misc Tools	505
<b>Nbr of Feet Used</b>	
Ldr Extension	48
Ldr Roof	30
Ldr Folding	28
<b>Box Type</b>	
Fire	88
False	527
Other	406

# PROVIDENCE FIRE DEPARTMENT ANNUAL REPORT

ANNUAL TOTALS	
Service Time Minutes	Runs
65441	3255

## Reporting Engine Company

Engine 15

### Annual Report for 2017

	Minutes	Runs
<b>FIRE</b>	<b>5132</b>	<b>177</b>
Structure	3379	77
Vehicle	317	11
Other	1436	89
<b>EMS</b>	<b>46606</b>	<b>1960</b>
Cardiac	9038	251
Medical Aid	29757	1387
Other	7811	322
<b>HAZMAT</b>	<b>439</b>	<b>12</b>
Spill/Leak	368	9
Other	71	3
<b>NON-FIRE</b>	<b>8218</b>	<b>525</b>
Lockout/In	264	16
Water Emer	931	23
Accidental	3242	274
Defective	2159	126
Other	1622	86
<b>GOOD INTENT</b>	<b>1709</b>	<b>129</b>
Smoke Scare	576	46
Other	1133	83
<b>FALSE</b>	<b>2591</b>	<b>353</b>
Malicious	1835	290
Other	756	63
<b>RELOCATION</b>	<b>272</b>	<b>5</b>

## EQUIPMENT USED

Pump Minutes 984

### Nbr of Feet Used

Hose 5" 1000

Hose 3" 0

Hose 2.5" 0

Hose 1.75" 8050

Hose .75" 2650

### Nbr Used

Scba 337

### Nbr of Times Used

Master Appl 0

Extinguisher 8

Foam 0

Oxygen 230

AED 68

Generator 0

Port Pump 3

FirstAid Bag 1329

CO2 Meter 39

Misc Tools 1059

### Nbr of Feet Used

Ldr Extension 135

Ldr Roof 0

Ldr Folding 10

## Box Type

Fire 76

False 464

Other 463

# PROVIDENCE FIRE DEPARTMENT ANNUAL REPORT

## Reporting Ladder Company

### Ladder 1

#### Annual Report for 2017

ANNUAL TOTALS	
Service Time Minutes	Runs
38199	2393

	Minutes	Runs
<b>FIRE</b>	<b>6930</b>	<b>213</b>
Structure	4719	96
Vehicle	546	20
Other	1665	97
<b>EMS</b>	<b>6469</b>	<b>412</b>
Cardiac	404	20
Medical Aid	3995	247
Other	2070	145
<b>HAZMAT</b>	<b>1123</b>	<b>35</b>
Spill/Leak	760	22
Other	363	13
<b>NON-FIRE</b>	<b>2E+04</b>	<b>E+03</b>
Lockout/In	1881	89
Water Emer	877	26
Accidental	6089	547
Defective	5523	368
Other	6744	423
<b>GOOD INTENT</b>	<b>1090</b>	<b>96</b>
Smoke Scare	645	58
Other	445	38
<b>FALSE</b>	<b>1234</b>	<b>134</b>
Malicious	956	105
Other	278	29
<b>RELOCATIONS</b>	<b>3</b>	<b>1</b>

#### EQUIPMENT USED

	Number of Feet Used
Aerial	2535
Extension	369
Straight	133
Roof	106
Folding	569
Combination	42

	Number Used
Scba	1295

	Number of Times Used
LadderPipe	2
Extinguisher	40
Foam	0
Oxygen	90
Generator	28
Smoke Ejt	21
Port Pump	2
Scene Light	38
Jaws	3
K12	13
Qvent	9
FirstAid Bag	307
CO2 Meter	63
Misc Tools	1187

#### Lockout/in Type

Building	13
Auto	12
Elevator	77

#### Box Type

Fire	60
False	712
Other	539



# PROVIDENCE FIRE DEPARTMENT ANNUAL REPORT

## Reporting Ladder Company

Ladder 2

### Annual Report for 2017

ANNUAL TOTALS	
Service Time Minutes	Runs
32912	1670

	Minutes	Runs
<b>FIRE</b>	<b>8129</b>	<b>209</b>
Structure	6165	97
Vehicle	330	19
Other	1634	93
<b>EMS</b>	<b>5292</b>	<b>276</b>
Cardiac	634	21
Medical Aid	3645	193
Other	1013	62
<b>HAZMAT</b>	<b>1230</b>	<b>41</b>
Spill/Leak	424	22
Other	806	19
<b>NON-FIRE</b>	<b>1E+04</b>	<b>732</b>
Lockout/In	1322	73
Water Emer	70	4
Accidental	5189	389
Defective	2486	185
Other	1356	81
<b>GOOD INTENT</b>	<b>1242</b>	<b>113</b>
Smoke Scare	791	79
Other	451	34
<b>FALSE</b>	<b>2335</b>	<b>213</b>
Malicious	584	68
Other	1751	145
<b>RELOCATIONS</b>	<b>4061</b>	<b>46</b>

### EQUIPMENT USED

	Number of Feet Used
Aerial	3465
Extension	454
Straight	120
Roof	216
Folding	279
Combination	24

### Number Used

Scba	1431
------	------

### Number of Times Used

LadderPipe	1
Extinguisher	32
Foam	0
Oxygen	75
Generator	2
Smoke Ejt	22
Port Pump	1
Scene Light	10
Jaws	0
K12	11
Qvent	20
FirstAid Bag	180
CO2 Meter	81
Misc Tools	867

### Lockout/in Type

Building	25
Auto	13
Elevator	6

### Box Type

Fire	45
False	281
Other	324

# PROVIDENCE FIRE DEPARTMENT ANNUAL REPORT

## Reporting Ladder Company

Ladder 3

### Annual Report for 2017

ANNUAL TOTALS	
Service Time Minutes	Runs
24670	1477

	Minutes	Runs
<b>FIRE</b>	<b>4100</b>	<b>140</b>
Structure	3166	82
Vehicle	207	10
Other	727	48
<b>EMS</b>	<b>7667</b>	<b>414</b>
Cardiac	768	28
Medical Aid	4045	222
Other	2854	164
<b>HAZMAT</b>	<b>1754</b>	<b>70</b>
Spill/Leak	1324	48
Other	430	22
<b>NON-FIRE</b>	<b>8377</b>	<b>586</b>
Lockout/In	1398	79
Water Emer	241	11
Accidental	2736	246
Defective	2670	164
Other	1332	86
<b>GOOD INTENT</b>	<b>998</b>	<b>82</b>
Smoke Scare	415	37
Other	583	45
<b>FALSE</b>	<b>1190</b>	<b>115</b>
Malicious	979	96
Other	211	19
<b>RELOCATIONS</b>	<b>258</b>	<b>6</b>

### EQUIPMENT USED

	Number of Feet Used
Aerial	2460
Extension	201
Straight	142
Roof	46
Folding	140
Combination	10

	Number Used
Scba	319

	Number of Times Used
LadderPipe	0
Extinguisher	14
Foam	0
Oxygen	80
Generator	5
Smoke Ejt	33
Port Pump	2
Scene Light	24
Jaws	0
K12	1
Qvent	10
FirstAid Bag	241
CO2 Meter	162
Misc Tools	639

### Lockout/in Type

Building	33
Auto	7
Elevator	20

### Box Type

Fire	28
False	164
Other	269

# PROVIDENCE FIRE DEPARTMENT ANNUAL REPORT

## Reporting Ladder Company

Ladder 4

### Annual Report for 2017

ANNUAL TOTALS	
Service Time Minutes	Runs
421	24

	Minutes	Runs
<b>FIRE</b>	184	5
Structure	184	5
Vehicle	0	0
Other	0	0
<b>EMS</b>	34	2
Cardiac	0	0
Medical Aid	34	2
Other	0	0
<b>HAZMAT</b>	0	0
Spill/Leak	0	0
Other	0	0
<b>NON-FIRE</b>	75	6
Lockout/In	15	1
Water Emer	0	0
Accidental	14	2
Defective	0	0
Other	46	3
<b>GOOD INTENT</b>	0	0
Smoke Scare	0	0
Other	0	0
<b>FALSE</b>	128	11
Malicious	0	0
Other	128	11
<b>RELOCATIONS</b>	0	0

### EQUIPMENT USED

	Number of Feet Used
Aerial	0
Extension	28
Straight	20
Roof	0
Folding	8
Combination	0

	Number Used
Scba	6

	Number of Times Used
LadderPipe	0
Extinguisher	0
Foam	0
Oxygen	0
Generator	0
Smoke Ejt	0
Port Pump	0
Scene Light	2
Jaws	0
K12	0
Qvent	0
FirstAid Bag	2
CO2 Meter	0
Misc Tools	14

### Lockout/In Type

Building	0
Auto	0
Elevator	1

### Box Type

Fire	1
False	10
Other	5



# PROVIDENCE FIRE DEPARTMENT ANNUAL REPORT

## Reporting Ladder Company

Ladder 5

### Annual Report for 2017

ANNUAL TOTALS	
Service Time Minutes	Runs
26892	1431

	Minutes	Runs
<b>FIRE</b>	<b>7056</b>	<b>236</b>
Structure	5403	131
Vehicle	670	31
Other	983	74
<b>EMS</b>	<b>3658</b>	<b>185</b>
Cardiac	529	20
Medical Aid	2169	114
Other	960	51
<b>HAZMAT</b>	<b>1646</b>	<b>38</b>
Spill/Leak	1027	21
Other	619	17
<b>NON-FIRE</b>	<b>11404</b>	<b>721</b>
Lockout/In	1275	75
Water Emer	332	12
Accidental	5660	318
Defective	3118	191
Other	1728	125
<b>GOOD INTENT</b>	<b>1128</b>	<b>78</b>
Smoke Scare	595	43
Other	533	35
<b>FALSE</b>	<b>997</b>	<b>101</b>
Malicious	759	81
Other	238	20
<b>RELOCATIONS</b>	<b>0</b>	<b>0</b>

### EQUIPMENT USED

	Number of Feet Used
Aerial	5350
Extension	283
Straight	192
Roof	118
Folding	162
Combination	0

	Number Used
Scba	1229

	Number of Times Used
LadderPipe	0
Extinguisher	72
Foam	0
Oxygen	26
Generator	2
Smoke Ejt	22
Port Pump	2
Scene Light	15
Jaws	16
K12	14
Qvent	19
FirstAid Bag	120
CO2 Meter	127
Misc Tools	967

### Lockout/in Type

Building	39
Auto	15
Elevator	11

### Box Type

Fire	59
False	357
Other	228

# PROVIDENCE FIRE DEPARTMENT ANNUAL REPORT

## Reporting Ladder Company

Ladder 6

### Annual Report for 2017

ANNUAL TOTALS	
Service Time Minutes	Runs
28203	1829

	Minutes	Runs
<b>FIRE</b>	7751	323
Structure	5292	130
Vehicle	423	25
Other	2036	168
<b>EMS</b>	3895	212
Cardiac	166	6
Medical Aid	1953	95
Other	1776	111
<b>HAZMAT</b>	2236	90
Spill/Leak	1724	65
Other	512	25
<b>NON-FIRE</b>	1E+04	915
Lockout/In	1697	103
Water Emer	644	19
Accidental	4444	430
Defective	2461	172
Other	2501	191
<b>GOOD INTENT</b>	1103	75
Smoke Scare	410	30
Other	693	45
<b>FALSE</b>	1011	132
Malicious	816	114
Other	195	18
<b>RELOCATIONS</b>	118	2

### EQUIPMENT USED

	Number of Feet Used
Aerial	5925
Extension	364
Straight	156
Roof	156
Folding	286
Combination	38

	Number Used
Scba	850

	Number of Times Used
LadderPipe	0
Extinguisher	89
Foam	0
Oxygen	19
Generator	4
Smoke Ejt	35
Port Pump	4
Scene Light	25
Jaws	0
K12	13
Qvent	21
FirstAid Bag	81
CO2 Meter	132
Misc Tools	826

### Lockout/in Type

Building	54
Auto	19
Elevator	15

### Box Type

Fire	79
False	366
Other	430

# PROVIDENCE FIRE DEPARTMENT ANNUAL REPORT

## Reporting Ladder Company

Ladder 7

### Annual Report for 2017

ANNUAL TOTALS	
Service Time Minutes	Runs
29494	1667

	Minutes	Runs
<b>FIRE</b>	4724	130
Structure	2529	42
Vehicle	683	24
Other	1512	64
<b>EMS</b>	7922	390
Cardiac	575	27
Medical Aid	3841	177
Other	3506	186
<b>HAZMAT</b>	1622	48
Spill/Leak	626	15
Other	996	33
<b>NON-FIRE</b>	1E+04	715
Lockout/In	1397	74
Water Emer	251	10
Accidental	2952	272
Defective	3140	208
Other	2304	151
<b>GOOD INTENT</b>	1322	95
Smoke Scare	712	54
Other	610	41
<b>FALSE</b>	2625	243
Malicious	583	66
Other	2042	177
<b>RELOCATIONS</b>	1058	7

### EQUIPMENT USED

	Number of Feet Used
Aerial	1050
Extension	182
Straight	166
Roof	16
Folding	136
Combination	0

	Number Used
Scba	370

	Number of Times Used
LadderPipe	0
Extinguisher	11
Foam	0
Oxygen	59
Generator	1
Smoke Ejt	14
Port Pump	0
Scene Light	84
Jaws	6
K12	3
Qvent	4
FirstAid Bag	218
CO2 Meter	80
Misc Tools	632

### Lockout/in Type

Building	12
Auto	5
Elevator	8

### Box Type

Fire	38
False	369
Other	531



# PROVIDENCE FIRE DEPARTMENT ANNUAL REPORT

## Reporting Ladder Company

Ladder 8

### Annual Report for 2017

ANNUAL TOTALS	
Service Time Minutes	Runs
30446	1661

	Minutes	Runs
<b>FIRE</b>	<b>4509</b>	<b>149</b>
Structure	2706	57
Vehicle	193	6
Other	1610	86
<b>EMS</b>	<b>3957</b>	<b>176</b>
Cardiac	177	5
Medical Aid	1985	89
Other	1795	82
<b>HAZMAT</b>	<b>1376</b>	<b>31</b>
Spill/Leak	1018	19
Other	358	12
<b>NON-FIRE</b>	<b>2E+04</b>	<b>103</b>
Lockout/In	1580	67
Water Emer	564	24
Accidental	5623	426
Defective	5190	295
Other	3364	234
<b>GOOD INTENT</b>	<b>2151</b>	<b>133</b>
Smoke Scare	944	63
Other	1207	70
<b>FALSE</b>	<b>1727</b>	<b>69</b>
Malicious	1300	41
Other	427	28
<b>RELOCATIONS</b>	<b>136</b>	<b>6</b>

### EQUIPMENT USED

	Number of Feet Used
Aerial	3370
Extension	453
Straight	279
Roof	174
Folding	418
Combination	25

	Number Used
Scba	1339

	Number of Times Used
LadderPipe	2
Extinguisher	123
Foam	0
Oxygen	30
Generator	7
Smoke Ejt	40
Port Pump	1
Scene Light	72
Jaws	0
K12	8
Qvent	12
FirstAid Bag	118
CO2 Meter	96
Misc Tools	832

### Lockout/in Type

Building	24
Auto	4
Elevator	37

### Box Type

Fire	49
False	260
Other	569

**PROVIDENCE FIRE DEPARTMENT ANNUAL REPORT**  
Reporting Company

<b>ANNUAL TOTALS</b>	
Service Time Minutes	Runs
<b>34655</b>	<b>1679</b>

**SH1**

Annual Report for **2017**

	<u>Minutes</u>	<u>Runs</u>
<b>FIRE</b>	<b>10715</b>	<b>340</b>
Structure	7612	154
Vehicle	128	11
Other	2975	175
<b>EMS</b>	<b>1046</b>	<b>54</b>
Cardiac	137	3
Medical Aid	565	24
Other	344	27
<b>HAZMAT</b>	<b>6751</b>	<b>251</b>
Spill/Leak	5354	192
Other	1397	59
<b>NON-FIRE</b>	<b>1E+04</b>	<b>694</b>
Lockout/In	4246	215
Water Emer	144	8
Accidental	84	11
Defective	820	54
Other	7331	406
<b>GOOD INTENT</b>	<b>2717</b>	<b>210</b>
Smoke Scare	928	89
Other	1789	121
<b>FALSE</b>	<b>130</b>	<b>13</b>
Malicious	108	11
Other	22	2
<b>RELOCATIONS</b>	<b>0</b>	<b>0</b>

Air Bags	3
Air Cart	1
Air Tools	7
Computer	0
Confined Space	3
Cribbing	23
Hose	1
Hot Stick	5
Ram	7
Jaws	22
Ladders	9
Phd Meter	174
Other Gas Meter	432
Plugging Mat'ls	9
Rope Rescue	4
Saws	15
Stokes	1
TI Camera	158
Hand Tools	591
Power Tools	20
Torch/Slice Pak	0
Water Rescue	14
<b>Box Type</b>	
Fire	48
False	6
Other	221

**Extractions**

<b>Vehicle</b>	62
<b>Elevator</b>	219
<b>Other</b>	15

**Nbr of People Extracted**

<b>Vehicle</b>	61
<b>Elevator</b>	457
<b>Other</b>	13

**SCBA INFO**

<b>Used</b>	913
<b>Changed</b>	79

<b>CO Runs</b>	249
<b>Gas Runs</b>	182

**Auto Lockouts**

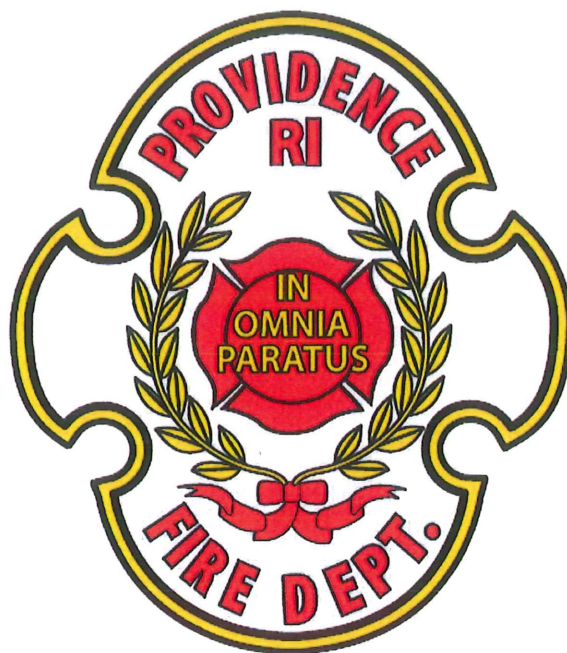
63
----

**SPEEDI DRI**

<b>Bags Used</b>	42
------------------	----

# PROVIDENCE FIRE DEPARTMENT

## DIVISION OF EMS



# 2017 ANNUAL REPORT

STEVEN M. PARÉ  
Commissioner of Public Safety  
Acting Chief of Department

JORGE O. ELORZA  
Mayor



Providence Fire Department 2012 to 2017 ALS & BLS Rescue Run Breakdown Worksheet							
	2012	2013	2014 (*)	2015	2016	2017	Totals
Advance Life Support (ALS)	21,020	20,941	20,124	20,603	21,344	20,625	124,657
Jumper	12	15	13	16	6	6	68
Industrial Accidents	12	13	13	14	19	13	84
Tipover	97	108	94	151	151	133	734
Water Rescue	34	37	22	25	36	22	176
Auto Accidents	2,034	1,833	1,948	2,205	2,284	2,344	12,648
Subtotal ALS (#1)	23,209	22,947	22,214	23,014	23,840	25,160	138,367
Basic Life Support (BLS)	9,022	4,297	5,203	6,725	7,206	7,685	40,138
Total ALS & BLS Runs	32,231	27,244	27,417	29,739	28,550	28,310	178,505
Note #1: These call types are classified as ALS.							
Mutual Aid into Providence							
	2012	2013	2014 (*)	2015	2016	2017	Totals
Mutual Aid Rescue Responses into Providence	2,432	1,061	915	990	995	889	7,282
Mutual Aid Fire Responses into Providence	4	5	8	9	57	18	101
	2,436	1,066	923	999	1052	907	7,383
Mutual Aid provided by the Providence Fire Department							
	2012	2013	2014 (*)	2015	2016	2017	Totals
Mutual Aid Rescue Responses out of Providence	291	338	383	354	321	414	2,101
Mutual Aid Fire Responses out of Providence	116	5	8	144	145	145	563
	407	343	391	498	466	559	2,664
(*) Rescue 7 began service in July 2014.							
Data Source: Providence Fire Department CAD System							

<b>PROVIDENCE FIRE DEPARTMENT</b> <b>2017 EMS DIVISION</b>
---

*Runs by Provider Impression*

Provider Impression	# of Times	% of Times
Abdominal Aortic Aneurysm	12	0.04%
Abdominal Pain/Problems	2,723	8.51%
Abuse / Neglect	9	0.03%
Airway Obstruction	14	0.04%
Allergic Reaction	159	0.50%
Altered Level of Consciousness	870	2.72%
Altered Neuro-Med. GCS<15 (780.01/293.1)	41	0.13%
Amputation	8	0.03%
Anaphylaxis	36	0.11%
Anemia	1	0.00%
Anxiety Reaction/Emotional Upset	985	3.08%
Apnea	4	0.01%
Apneic Episode	2	0.01%
Apparent Life-Threatening Event (ALTE)	3	0.01%
Appendicitis	3	0.01%
ARDS (Acute respiratory distress syndrome)	2	0.01%
Aspiration	2	0.01%
Asthma	400	1.25%
Avulsion	15	0.05%
Back Pain (Non-Traumatic)	1,063	3.32%
Behavioral/Psychiatric Disorder	1,834	5.73%
Bladder Exstrophy	2	0.01%
Blood emesis/vomit	14	0.04%
Blood feces	17	0.05%
Bowel changes alone	4	0.01%
Bowel Obstruction	7	0.02%
Bradycardia	12	0.04%
Bronchiolitis	15	0.05%
Burn	25	0.08%

**PROVIDENCE FIRE DEPARTMENT**  
**2017 EMS DIVISION**

***Runs by Provider Impression***

<b>Provider Impression</b>	<b># of Times</b>	<b>% of Times</b>
Burns - Thermal	24	0.08%
Burns - Chemical	7	0.02%
Cancer	6	0.02%
Cardiac - Chest Pain	528	1.65%
Cardiac - Supraventricular Tachycardia	24	0.08%
Cardiac - Symptomatic Bradycardia	13	0.04%
Cardiac - Symptomatic PVCs	1	0.00%
Cardiac - Ventricular Fibrillation	10	0.03%
Cardiac - Ventricular Tachycardia (With Pulse)	4	0.01%
Cardiac - Ventricular Tachycardia (Without Pulse)	1	0.00%
Cardiac Arrest	123	0.38%
Cardiac Arrest - Asystole	55	0.17%
Cardiac Arrest - Pulseless Electrical Activity	13	0.04%
Cardiac Rhythm Disturbance	49	0.15%
Cardiomyopathy	2	0.01%
Chest Pain/Discomfort	1,482	4.63%
CHF (Congestive Heart Failure)	67	0.21%
Chronic Lung Disease	3	0.01%
Congenital Diaphragmatic Hernia	4	0.01%
COPD (Emphysema/Chronic Bronchitis)	228	0.71%
Croup	15	0.05%
Crush Injury	1	0.00%
Cyanosis	1	0.00%
Dehydration	68	0.21%
Diabetic Hyperglycemia	344	1.08%
Diabetic Symptoms (Hypoglycemia)	192	0.60%
Diarrhea	71	0.22%
Dislocation	39	0.12%
Displaced Fracture: Closed	25	0.08%



<b>PROVIDENCE FIRE DEPARTMENT</b> <b>2017 EMS DIVISION</b>
---

*Runs by Provider Impression*

Provider Impression	# of Times	% of Times
Displaced Fracture: Open	2	0.01%
Dizziness	690	2.16%
DKA (Diabetic ketoacidosis)	3	0.01%
Drowning/Diving	2	0.01%
Electrocution	1	0.00%
Electrolyte Imbalance	1	0.00%
End Stage Renal Disease	1	0.00%
Epistaxis (Non-Traumatic)	50	0.16%
Esophageal Atresia	1	0.00%
ETOH	2,280	7.13%
Extremity Pain - Medical	121	0.38%
Eye Injury	35	0.11%
Facial Injuries	154	0.48%
Febrile Seizure	34	0.11%
Fever	329	1.03%
Flail Chest	1	0.00%
Flank / Groin Pain	42	0.13%
Flu Like Illness	421	1.32%
Foreign Body Airway Obstruction	4	0.01%
G.I. Bleed	14	0.04%
Gastroenteritis	3	0.01%
General Malaise	42	0.13%
GI Blood-Emesis (578.0)	15	0.05%
GI Blood-Feces (578.1)	12	0.04%
GI Bowel Changes (787.99)	7	0.02%
GI Dehydration c N/V/D (787.01)	1	0.00%
GI-Nausea & Vomiting (787.01)	92	0.29%
GI-Nausea ONLY (787.02)	21	0.07%
GI-Vomiting ONLY (787.03)	16	0.05%

<b>PROVIDENCE FIRE DEPARTMENT</b> <b>2017 EMS DIVISION</b>
---

*Runs by Provider Impression*

Provider Impression	# of Times	% of Times
GI/GU	15	0.05%
GU-Urinary Pain (788.1)	21	0.07%
GU-Urinary Retention (788.20)	11	0.03%
Gun Shot Wound/Open Wound	42	0.13%
Head Injury	250	0.78%
Head Injury – Open Scalp	66	0.21%
Headache	470	1.47%
Heat Exhaustion/Stroke	6	0.02%
Hemorrhage - Non-Traumatic	56	0.18%
Hemorrhage - Traumatic	26	0.08%
Hypertension	290	0.91%
Hyperthermia	2	0.01%
Hypotension	132	0.41%
Hypothermia	17	0.05%
Hypovolemia/Shock	2	0.01%
Hypoxia	11	0.03%
Inhalation Injury (Toxic Gas)	3	0.01%
Laceration	353	1.10%
Medical Legal Transport	9	0.03%
Medication Reaction	23	0.07%
Meningitis	2	0.01%
Migraine	47	0.15%
Nausea/Vomiting (Unknown Etiology)	404	1.26%
Near Syncope	49	0.15%
Newborn in Distress	2	0.01%
No Apparent Illness/Injury	301	0.94%
Normal Newborn	3	0.01%
Not Known	17	0.05%
OB/Delivery	52	0.16%

**PROVIDENCE FIRE DEPARTMENT**  
**2017 EMS DIVISION**

***Runs by Provider Impression***

<b>Provider Impression</b>	<b># of Times</b>	<b>% of Times</b>
OB/GYN-Vag Disch. (623.5)	38	0.12%
Obvious Death	162	0.51%
Other	1,050	3.28%
Other - Medical	928	2.90%
Other - Trauma	241	0.75%
Other Abdominal/GI Problem	7	0.02%
Other Airway Problem	88	0.28%
Other Cardiovascular Problem	16	0.05%
Other CNS Problem	6	0.02%
Other Endocrine/Metabolic Problem	3	0.01%
Other G.I. Symptoms	7	0.02%
Other GU Problems	10	0.03%
Other Illness/Injury	64	0.20%
Other OB/Gyn	61	0.19%
Overdose - Drug / Medication	710	2.22%
Overdose - Inhalant	8	0.03%
Pain	2,147	6.71%
Pain - Chest (Non-Cardiac)	23	0.07%
Pain-Medical Neck (723.1)	21	0.07%
Palpitations	41	0.13%
Patient Assist Only	3	0.01%
Pneumonia	37	0.12%
Pneumothorax	2	0.01%
Poisoning/Drug Ingestion	9	0.03%
Poss. Acute Cerv. Spine Injury	1	0.00%
Pre-Term Labor	22	0.07%
Pregnancy/OB Delivery	78	0.24%
Prematurity	2	0.01%
Pulmonary Embolism	2	0.01%



**PROVIDENCE FIRE DEPARTMENT**  
**2017 EMS DIVISION**

***Runs by Provider Impression***

<b>Provider Impression</b>	<b># of Times</b>	<b>% of Times</b>
Rectal Bleeding	22	0.07%
Renal Failure	5	0.02%
Respiratory Arrest	16	0.05%
Respiratory Distress	900	2.81%
Respiratory Distress - Pulmonary Edema	12	0.04%
Respiratory Failure	16	0.05%
Rib Fracture	8	0.03%
Seizure	995	3.11%
Sepsis	2	0.01%
Sexual Assault/Rape	14	0.04%
Sickle Cell Crisis	15	0.05%
Smoke Inhalation	6	0.02%
Soft Palette Injury	1	0.00%
Sprain / Strain	13	0.04%
Status Epilepticus	2	0.01%
STEMI	1	0.00%
Stings/Venomous Bites	1	0.00%
Stridor	2	0.01%
Stroke/CVA	182	0.57%
Substance Abuse-Withdrawal Drugs (292.9)	20	0.06%
Substance/Drug Abuse	38	0.12%
Syncope/Fainting	699	2.19%
TIA (Transient Ischemic Attack)	26	0.08%
TRAUMA MAJOR - Extremities	37	0.12%
TRAUMA MAJOR - Head/Neck	48	0.15%
TRAUMA MAJOR - Torso	38	0.12%
Trauma Minor - Head/Neck (959.8/959.01)	774	2.42%
Trauma Minor - Torso (959.8/922.9)	315	0.98%
Trauma Minor-Extremities (959.8/924.9)	548	1.71%

**PROVIDENCE FIRE DEPARTMENT**  
**2017 EMS DIVISION**

***Runs by Provider Impression***

<b>Provider Impression</b>	<b># of Times</b>	<b>% of Times</b>
Traumatic Cardiac Arrest	1	0.00%
Traumatic Injury	71	0.22%
Traumatic Injury - Abdomen	8	0.03%
Traumatic Injury - C-Spine	16	0.05%
Traumatic Injury - Chest	14	0.04%
Traumatic Injury - Multisystem	3	0.01%
Traumatic Injury - Spinal	17	0.05%
Unconscious	191	0.60%
Under Influence Not Altered	212	0.66%
Unknown Problem	72	0.23%
Vaginal Hemorrhage	45	0.14%
Vehicle Accident - No Injury	4	0.01%
Vertigo	28	0.09%
Weakness	1,996	6.24%
<b>Total</b>	<b>31,980</b>	<b>100.00%</b>

<b>PROVIDENCE FIRE DEPARTMENT</b> <b>2017 EMS DIVISION</b>
---

*Procedure Administered*

Procedure Name	#	%
12 Lead ECG-Obtain	503	1.90%
12 Lead ECG-Transmitted	172	0.65%
Airway - Intubation Confirm Lung Field Auscultation	8	0.03%
Airway - Intubation Confirm Waveform Capnography	2	0.01%
Airway - Manual	5	0.02%
Airway Insert / Monitoring	4	0.02%
Airway-Bagged (via BVMask)	67	0.25%
Airway-Bagged (via tube)	15	0.06%
Airway-Cleared, Opened, or Heimlich	9	0.03%
Airway-Endotracheal Intubation	14	0.05%
Airway-Nasopharyngeal	9	0.03%
Airway-Nebulizer Treatment	17	0.06%
Airway-Oropharyngeal	51	0.19%
Airway-ResQPump	1	0.00%
Airway-Suctioning	26	0.10%
Airway-Verification	109	0.41%
Assessment-Adult	2,203	8.30%
Assessment-Neonatal	7	0.03%
Assessment-Pediatric	112	0.42%
Bleeding/Hemorrhage Control	109	0.41%
Blood Glucose Analysis	3,581	13.50%
Blood Pressure	4,043	15.24%
Burn Care	4	0.02%
Capnography	7	0.03%
Cardiac Monitor	1,764	6.65%
Childbirth	2	0.01%
Compression Bandage	26	0.10%
Contact Medical Control	287	1.08%



<b>PROVIDENCE FIRE DEPARTMENT</b> <b>2017 EMS DIVISION</b>
---

*Procedure Administered*

Procedure Name	#	%
CPR-Hold	1	0.00%
CPR-Start Compressions and Ventilations	49	0.18%
CPR-Start Rescue Breathing without Compressions	2	0.01%
CPR-Stop	1	0.00%
Cutting of the Umbilical Cord	2	0.01%
Defibrillation-Automated (AED)	11	0.04%
Defibrillation-Manual	13	0.05%
Defibrillation-Placement for Monitoring/Analysis	8	0.03%
Drying of Child	2	0.01%
Extrication	1	0.00%
Fluid Challenge	10	0.04%
Ice Pack Application	96	0.36%
Injections-SQ/IM	44	0.17%
Isolation Procedures	2	0.01%
IV Access Extremity - NS 250cc tko	25	0.09%
ME - Medication Administered	681	2.57%
Obtain Patient History	2,222	8.38%
Other	4	0.02%
Patient Cooling (Cold Pack, etc.)	13	0.05%
Pediatric-Specific Transport Securing Device	1	0.00%
Pulse Oximetry	4,054	15.28%
Radio Report to ER	608	2.29%
Restraints-Physical	4	0.02%
Specialty Center Activation-Adult Trauma	20	0.08%
Specialty Center Activation-Cardiac Arrest	8	0.03%
Specialty Center Activation-Pediatric Trauma	2	0.01%
Specialty Center Activation-STEMI	3	0.01%
Specialty Center Activation-Stroke	22	0.08%

<b>PROVIDENCE FIRE DEPARTMENT</b> <b>2017 EMS DIVISION</b>
---

*Procedure Administered*

Procedure Name	#	%
Spinal Assessment - Deficits Noted	1	0.00%
Spinal Assessment - No Deficits Noted	35	0.13%
Spinal Immobilization	23	0.09%
Spinal Immobilization - Long Back Board	68	0.26%
Spinal Immobilization - Rigid Cervical Collar	77	0.29%
Spinal Immobilization - Standing Take-Down	2	0.01%
Spinal Immobilization - Pediatric	1	0.00%
Splinting	50	0.19%
Splinting-Traction	2	0.01%
Stair Chair	98	0.37%
Temperature Measurement	420	1.58%
Vagal Maneuver-Carotid Massage	6	0.02%
Valsalva Maneuver	2	0.01%
Venous Access-Blood Draw	10	0.04%
Venous Access-Extremity	3,713	14.00%
Venous Access-Intraosseous Adult	55	0.21%
Venous Access-Saline Lock	623	2.35%
Warming	4	0.02%
Wound Care	198	0.75%
Wound Care - Abdominal Dressing	2	0.01%
Wound Care - Burn Care	3	0.01%
Wound Care - Eye Irrigation	1	0.00%
Wound Care - Pressure Dressing	51	0.19%
Wound Care - Vasaline Gauze	1	0.00%
Wound Care-Irrigation	10	0.04%
Wound Care-Tourniquet	3	0.01%
Wound Care-Trauma Pack	2	0.01%
<b>Total</b>	<b>26,527</b>	<b>100.00%</b>

**PROVIDENCE FIRE DEPARTMENT**  
**2017 EMS DIVISION**

*Medication Administered*

Medication Name	#	%
Acetaminophen	35	0.60%
Activated Charcoal w/ Sorbitol	3	0.05%
Adenosine	16	0.28%
Adenosine 12 mg	11	0.19%
Albuterol Sulfate	194	3.34%
Amiodorone (Cordarone)	8	0.14%
Aspirin (ASA)	484	8.32%
Atropine Sulfate	32	0.55%
Atrovent (Ipratropium Bromide)	2	0.03%
Dextrose 50% (D50)	64	1.10%
Diphenhydramine (Benadryl)	49	0.84%
DuoNeb (0.5 Atrovent/3.0 Albuterol)	329	5.66%
Epinephrine 1:10,000	234	4.02%
Epinephrine 1:1000	27	0.46%
Furosemide (Lasix)	3	0.05%
Glucagon	46	0.79%
Glucose (Oral)	72	1.24%
Lactated Ringers	21	0.36%
Lidocaine 2% (10ml injection)	3	0.05%
Lorazepam (Ativan)	27	0.46%
Midazolam (Versed)	13	0.22%
Morphine Sulfate	4	0.07%
Naloxone (Narcan)	400	6.88%
Nitroglycerin	57	0.98%
Nitroglycerin Tabs	318	5.47%
Normal Saline	1,942	33.39%
Ondansetron (Zofran)	126	2.17%
Oxygen (non-rebreather mask)	489	8.41%
Oxygen BVM	60	1.03%
Oxygen by Blow By	9	0.15%



**PROVIDENCE FIRE DEPARTMENT**  
**2017 EMS DIVISION**

***Medication Administered***

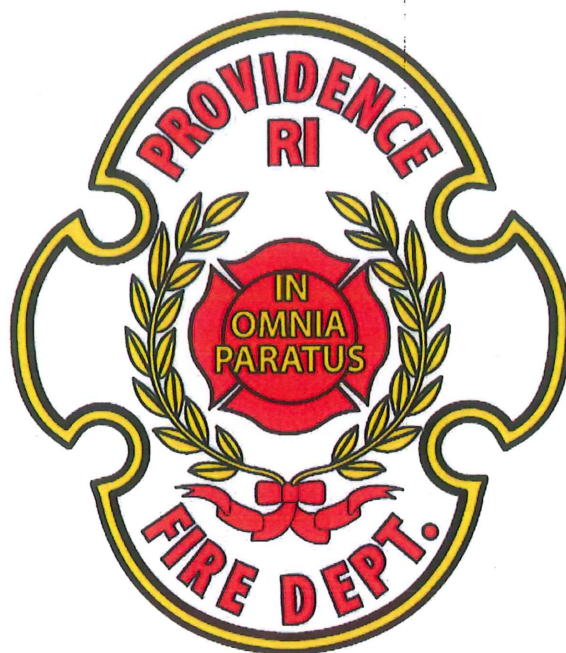
<b>Medication Name</b>	<b>#</b>	<b>%</b>
Oxygen by Nasal Cannula	465	8.00%
Oxygen by Nebulizer	85	1.46%
Oxygen by Positive Pressure Device	38	0.65%
Solu-Cortef (Hydrocortisone)	115	1.98%
Thiamine	32	0.55%
Wasted - Midazolam (Versed)	3	0.05%
<b>Total</b>	<b>5,816</b>	<b>100.00%</b>

<b>PROVIDENCE FIRE DEPARTMENT</b> <b>2017 EMS DIVISION</b>
---

*Transports to Area Hospitals*

Destination	# of Runs	% of Runs
Emmanuel House	77	0.32%
Hasbro Children's Hospital	1,596	6.62%
Hospital Not Listed	86	0.36%
Kent Hospital	19	0.04%
Memorial Hospital of Rhode Island	40	0.17%
Miriam Hospital	3,472	14.40%
Not Applicable	52	0.22%
Not Available	25	0.10%
Not Known	3	0.01%
Not Recorded	1	0.00%
Rhode Island Hospital	12,338	51.17%
Roger Williams Medical Center	2,868	11.89%
St. Joseph's Hospital -- Fatima Unit	548	2.27%
VA Medical Center	230	0.95%
Women & Infants Hospital	454	1.88%
Butler Hospital	1	0.00%
No Destination	2,314	9.60%
<b>Total</b>	<b>24,114</b>	<b>100.00%</b>

# PROVIDENCE FIRE DEPARTMENT DIVISION OF TRAINING



## 2017 ANNUAL REPORT

STEVEN M. PARÉ  
Commissioner of Public Safety  
Acting Chief of Department

JORGE O. ELORZA  
Mayor



**STEVEN M. PARÉ**  
Commissioner of Public Safety  
Acting Chief of Department

**CAPTAIN ROBERT RANDLE**  
Director of Training



**JORGE O. ELORZA**  
Mayor

Department of Public Safety, Fire Department  
*"Building Pride in Providence"*

## **2017 Division of Training Activity**

The Division of Training continues to provide the highest quality training, certification, and recertification services to the members of the Providence Fire Department. All fire department members continue with monthly and annual training which consists of structural firefighting training, hazardous material training, emergency medical training and continued education in numerous other areas so to prepare the members to handle different emergency responses on a daily basis. This training is done so that the Providence Fire Department may protect the public as well as property within the city, and to maintain the highest level of safety for the members. All training is either given at the Division of Training or in the Company's Stations.

The Division of Training trained and graduated eighty-three recruits of the 51<sup>st</sup> Fire Academy. Additionally, the staff began the hiring process for the 52<sup>nd</sup> Fire Academy which is due to start in the spring of 2018. The written entrance exam was administered to 825 applicants in October followed by the Candidate Physical Ability Test (CPAT) in December continuing through February of 2018.

The following is a list of the training activities conducted by the Division of Training during calendar year 2017.

### **January**

- Candidate Physical Ability Test (CPAT) for 51<sup>st</sup> Training Academy
- Point School Make-up Class
- New State EMS Protocol updates class. A total of 22 classes were held with 108 members trained
- Battalion Chief Class administered for the Acting Battalion Chiefs on January 31, 2017. Thirteen Captains were present.
- Monthly training topics included operations at structure fires and carbon monoxide exposure.

Providence Fire Department | Division of Training  
274 Reservoir Avenue | Providence, RI 02907  
401-781-3439 phone | 401-680-7468 fax  
[www.providenceri.gov](http://www.providenceri.gov)

**STEVEN M. PARÉ**  
Commissioner of Public Safety  
Acting Chief of Department

**CAPTAIN ROBERT RANDLE**  
Director of Training



**JORGE O. ELORZA**  
Mayor

**CAPTAIN L. BORTLE**  
Director of Public Safety

Department of Public Safety, Fire Department  
*"Building Pride in Providence"*

### February

- Candidate Physical Ability Test (CPAT) for 51<sup>st</sup> Academy
- New State EMS Protocol updates class. Nineteen classes were held with 100 members trained.
- Battalion Chief Class held for the Acting Battalion Chiefs held on February 2, 2017. Thirteen Captains were present.
- Monthly training topics included search and rescue and post cardiac arrest care.

### March

- New State EMS Protocol updates class. Twenty-two classes were held with 104 members trained.
- Battalion Chief promotional test administered to twenty members on March 24, 2017.
- Fire Lieutenant promotional test administered to 44 members on March 24, 2017.
- Rescue Lieutenant promotional test administered to seven members on March 22, 2017.
- Monthly training topics included tying knots and spinal motion restriction precautions.

### April

- Annual Fit Test begins.
- Scheduling and administering of medical, psychological, and BCI appointments for candidates for 51<sup>st</sup> training academy.
- Monthly training topics include responding to elevator emergencies and pediatric respiratory distress.

Providence Fire Department | Division of Training  
274 Reservoir Avenue | Providence, RI 02907  
401-781-3439 phone | 401-680-7468 fax  
[www.providenceri.gov](http://www.providenceri.gov)

**STEVEN M. PARÉ**  
Commissioner of Public Safety  
Acting Chief of Department

**CAPTAIN ROBERT RANDLE**  
Director of Training



**JORGE O. ELORZA**  
Mayor

Department of Public Safety, Fire Department  
*"Building Pride in Providence"*

### May

- Preparations and orientation session held for new fire Trainees.
- Fire Lieutenant promotional school administered from May 22-26, 2017 with thirteen members attending.
- Scheduling and administering of medical, psychological, and BCI appointments for candidates for 51<sup>st</sup> training academy.
- Monthly training topics include response to terrorism, nerve agent or organophosphate toxicity.

### June

- The 51<sup>st</sup> Training Academy begins June 5, 2017.
- Radiological kits on all companies swapped out with REMA.
- Recruitment for 52<sup>nd</sup> Academy.
- Monthly Training Topics include paid detail procedures, bradycardia- adult symptomatic.
- Mask Fit Tests given to all 51<sup>st</sup> Academy trainees.

### July

- Fire Captain Promotional Test administered to thirty-nine members on July 14, 2017.
- 51<sup>st</sup> Academy continues.
- Recruitment and application information for 52<sup>nd</sup> Academy.
- Monthly training topics include apparatus safety and heat related illness.

Providence Fire Department | Division of Training  
274 Reservoir Avenue | Providence, RI 02907  
401-781-3439 phone | 401-680-7468 fax  
[www.providenceri.gov](http://www.providenceri.gov)



**STEVEN M. PARÉ**  
Commissioner of Public Safety  
Acting Chief of Department

**CAPTAIN ROBERT RANDLE**  
Director of Training



**JORGE O. ELORZA**  
Mayor

**CAPTAIN ROBERT RANDLE**  
Director of Training

Department of Public Safety, Fire Department  
*"Building Pride in Providence"*

### August

- 51<sup>st</sup> Academy continues
- Recruitment and application information for 52<sup>nd</sup> Academy
- Monthly training topics include responding to gas emergencies and submersion near drowning
- Mask Fit Test (4 point masks) administered for all members assigned to fire companies.

### September

- Fire Lieutenant Promotional Test administered to fifty members on September 8, 2017.
- 51<sup>st</sup> Academy continues
- Recruitment and application information for 52<sup>nd</sup> Academy.
- National Grid LNG Walk-through
- NFPA 1006 Rope Rescue Course
- Participated in the job fair held at the Roger Williams Casino.
- Monthly Training Topics (Bombs and Explosive Devices, Adult Diabetic Emergencies)
- Mask fit test administered for all Battalion Chiefs (4 point masks)
- Held a one week Fire Lieutenants Promotional School for fifteen members.

**STEVEN M. PARÉ**  
Commissioner of Public Safety  
Acting Chief of Department

**CAPTAIN ROBERT RANDLE**  
Director of Training



**JORGE O. ELORZA**

Mayor  
City of Providence

**CAPTAIN ROBERT RANDLE**  
Director of Training

Department of Public Safety, Fire Department  
*"Building Pride in Providence"*

### October

October

- 51<sup>st</sup> Academy continues.
- Held two Point Schools on the subject matter of Solar Panel Systems. On October 19, 2017 there were 45 members trained; on October 20, 2017 there were 38 members trained, on October 23, 2017 there were 39 members trained.
- Held the written exam on October 21<sup>st</sup>, 2017 for 825 candidates to the 52<sup>nd</sup> academy.
- Hose testing was conducted.
- Set-up the Candidate Physical Ability Test (CPAT) Course for 52<sup>nd</sup> Academy Testing

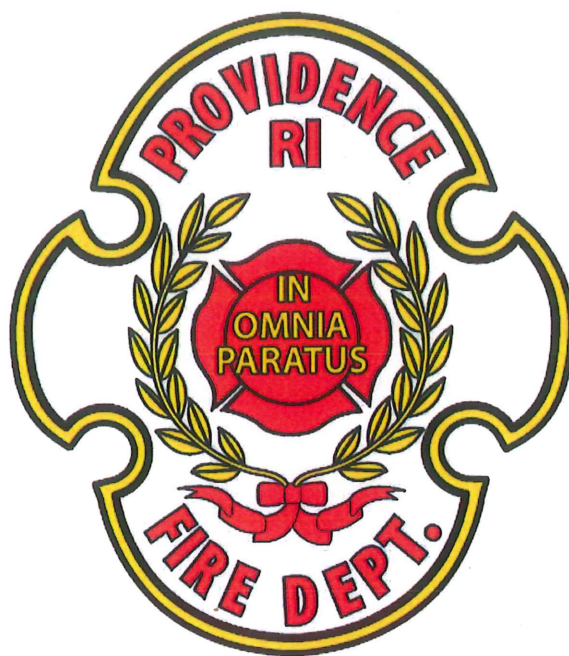
### November

- Hose testing was conducted
- A point school was held for forty-three members on November 1, 2017.
- Graduation of 83 members of the 51<sup>st</sup> academy held on November 20, 2017.

### December

- CPR recertification
- The Candidate Physical Ability Test (CPAT) orientation was held.
- Candidate Physical Ability Test (CPAT) practice sessions (not timed) began.
- Conducted a MRI walk-thru at Rhode Island Hospital.
- Hosted a Marine1 navigation course.

# PROVIDENCE FIRE DEPARTMENT FIRE PREVENTION DIVISION



## 2017 ANNUAL REPORT

STEVEN M. PARÉ  
Commissioner of Public Safety  
Acting Chief of Department

JORGE O. ELORZA  
Mayor



## FIRE PREVENTION BUREAU

The Providence Fire Department Fire Prevention Bureau was extremely active in 2017 and managed the largest workload to date. Expectations for plan review and code enforcement were greatly exceeded with our Fire Inspectors handling a record breaking workload in the most professional manner with an emphasis on customer service. The Fire Prevention Bureau's (FPB) core functions of plan review, code enforcement/inspections, public education and fire investigation all faced an increase in activity and demand. That demand was met with the utmost professionalism and integrity by the Inspectors and staff of the Fire Prevention Bureau.

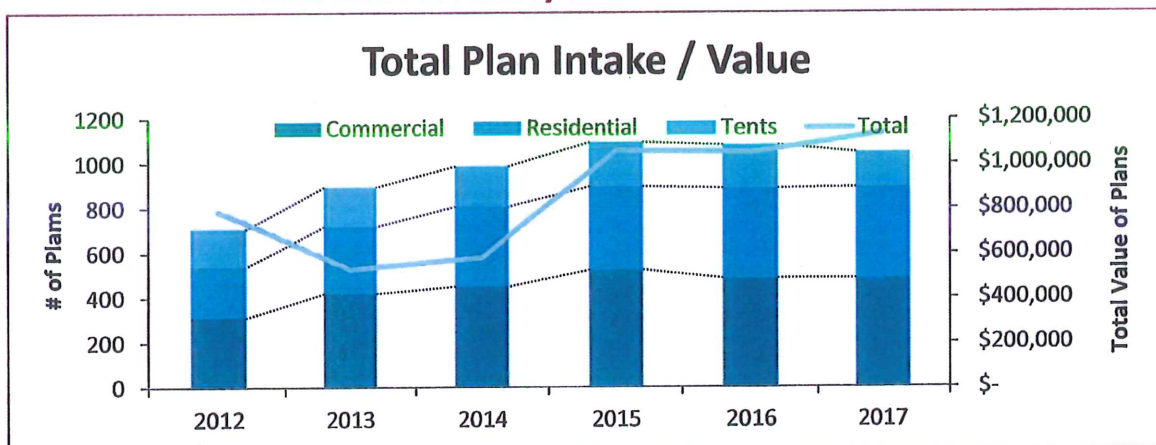
### Plan Review

Plan review

In 2017, the Providence Fire Department transitioned to online permitting to speed the process of permit approval with the Department of Inspection and Standards. This process will shorten the approval process time and increase communication and transparency with the Department of Inspection and Standards and the customer. The Department's Fire Prevention Bureau had a record setting year in performing plan review and inspection services that resulted in fees collected of \$1,133,316.37. The fees collected represent a ten percent increase over 2016 figures. There were 548 commercial plan reviews, 407 residential plan reviews and 145 tent plan reviews and subsequent inspections.

In an effort to reduce costly delays in permit approval that eventually leads to lost revenue in the construction industry and business, and to be more response to the needs of our customers, the wait time was reduced for plan review approval by 12% from 2016.

6 Year Chart of History of Plan Volume and Value

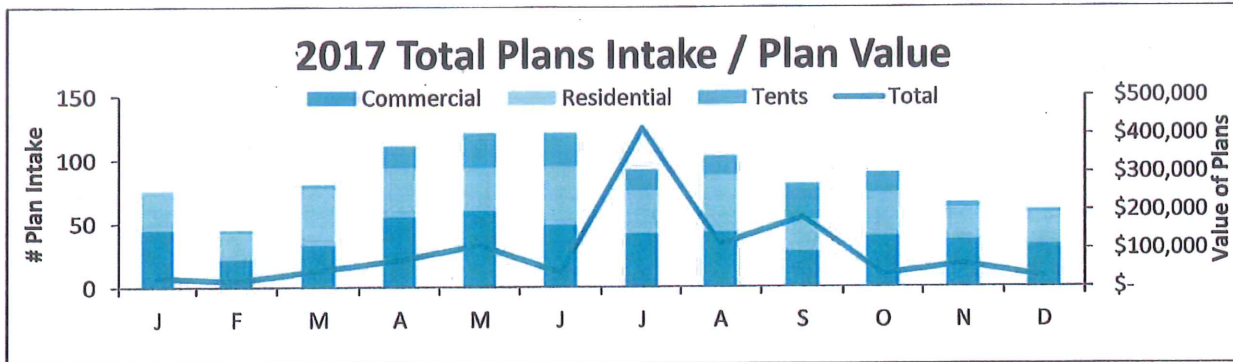


Steven M. Pare  
Acting Chief of Department

Peter K. McMichael  
Acting Fire Marshal

## FIRE PREVENTION BUREAU

### 2017 Total Plans/Value Collected by Month



### Average Fee Collected 2017

2017 Annual Plan Intake Average			
	Lowest	Highest	Average
Commercial	\$ -	\$ 153,057.00	\$ 2,136.01
Residential	\$ -	\$ 10,100.00	\$ 286.10

### Average Monthly Total Collected 2017

2017 Annual Plan Intake Average (Collected)			
	Lowest	Highest	Average
Commercial	\$ 5,190.00	\$ 398,828.00	\$ 83,510.00
Residential	\$ 4,300.00	\$ 17,850.00	\$ 8,792.00

Steven M. Pare  
Acting Chief of Department

Peter K. McMichael  
Acting Fire Marshal

## **FIRE PREVENTION BUREAU**

### **Fire code enforcement and Inspections**

The Rhode Island Fire Code requires that certain occupancies are inspected on an annual basis. It places particular emphasis on the safe operation of particular types of occupancies. Nightclubs, places of assembly, educational occupancies, and apartment buildings used as housing for the elderly or disabled must all be inspected annually. Additionally, all residential properties must be inspected before the property is sold to ensure compliance with the fire code. The Fire Prevention Bureau also performs inspections at the request of the license board to ensure that establishments that are licensed by the City are compliant with the Fire Code.

The Providence Fire Department receives hundreds of complaints each year regarding unsafe conditions and fire code violations. Each of these complaints must be investigated by a Fire Inspector. Often, these complaints involve multiple follow up inspections to ensure compliance with the fire code. Mitigating the complaints is crucial to preventing loss of life from the devastating effects of fire in our residential and commercial buildings.

### **2017 Total Number of Inspections**

Nightclub	58
Elderly & Disabled Housing	50
Schools	72
Complaints	213
Smoke & CO Inspections	2,122
Licenses	402
<b>Total</b>	<b>2,917</b>

Steven M. Pare  
Acting Chief of Department

Peter K. McMichael  
Acting Fire Marshal

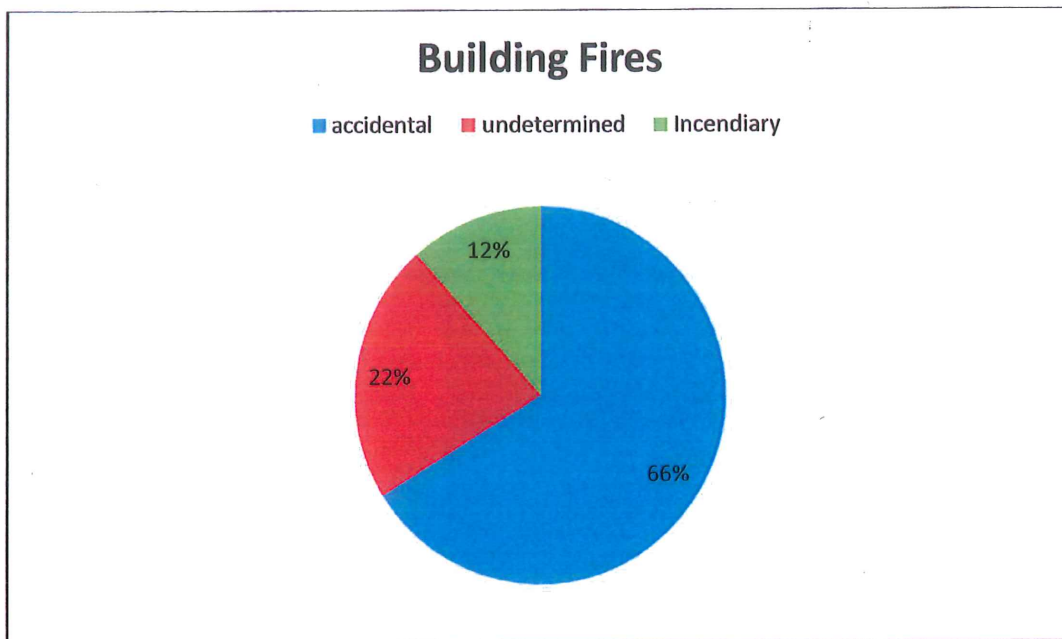


## FIRE PREVENTION BUREAU

### Fire Investigations

### Fire Investigations

There were 242 building fire investigations were conducted in 2017, of which 160 were classified as accidental, 54 classified as undetermined and 28 classified as incendiary in nature. This figure represents nearly a 14% increase from the previous year's 213 building fires. Of the 81 motor vehicle fires that were investigated 10 were classified as incendiary. Additionally, there were 37 miscellaneous types of fires also investigated that involved trash, debris, etc. In 2017 Fire Investigations led to eight arrests by the department's Arson Squad.



### 2017 Fire Losses by Construction Type

Construction Type	Current	Last Year
Fire-Resistive	3,084	2,999
Heavy Timber	88	71
Masonry	1,920	1,894
No Construction	4,036	3,936
Type Entered		
Ordinary	1,521	1,401
Wood Frame	685	627
xx do not use	0	0
Concrete Block		
xx dot not use Brick	13	7
Grand Totals:	11,347	10,935

Steven M. Pare  
Acting Chief of Department

Peter K. McMichael  
Acting Fire Marshal

## FIRE PREVENTION BUREAU

Property Use	Current	Last Year
1 or 2 family dwelling	5,308	4,720
24-hour care Nursing homes, 4 or	633	603
Adult education center, college	262	221
Aircraft loading area	16	38
Aircraft runway	13	2
Aircraft taxiway	0	1
Airport passenger terminal	0	0
Alcohol or substance abuse recov	200	179
Amusement center: indoor/outdoor	23	12
Assembly	2	0
Assembly, other	77	55
Asylum, mental institution	44	18
Athletic/health club	23	25
Auditorium, concert hall	9	8
Ballroom, gymnasium	14	16
Bank	33	35
Bar or nightclub	188	167
Barracks, dormitory	5	2
Beach	1	3
Billiard center, pool hall	3	1
Boarding/rooming house, resident	678	756
Bowling establishment	0	0
Bridge, trestle	5	6
Bus station	285	465
Business office	444	443
Campsite with utilities	0	0
Casino, gambling clubs	0	0
Church, mosque, synagogue, templ	166	155
Clinic, clinic-type infirmary	98	91
Clinics, doctors offices, hemodi	532	442
Clubhouse	11	7
Clubs, other	44	42
Communications center	10	5
Computer center	2	3
Construction site	37	18
Convenience store	173	152
Convention center, exhibition ha	34	16
Courthouse	71	51
Crops or orchard	0	0
Day care in residence, unlicense	0	1
Day care, in commercial property	57	65
Day care, in residence, licensed	9	14
Day care, other (Conversion only	0	0
Defense, military installation	5	6
Department or discount store	41	47
Dock, marina, pier, wharf	7	12
Doctor, dentist or oral surgeon	143	165

Steven M. Pare  
Acting Chief of Department

Peter K. McMichael  
Acting Fire Marshal

## FIRE PREVENTION BUREAU

<u>Property Use</u>	<u>Current</u>	<u>Last Year</u>
Dormitory-type residence, other	394	404
Dump, sanitary landfill	1	1
Eating, drinking places, other	173	104
Educational	3	5
Educational, other	113	108
Electric-generating plant	1	5
Electrical distribution	8	1
Electronic amusement center	2	0
Elementary school, including kin	112	139
Energy production plant, other	2	1
Film/movie production studio	2	0
Fire station	236	184
Fixed-use recreation places, oth	41	44
Flammable liquid distribution, F	2	1
Food and beverage sales, grocery	116	112
Forest, timberland, woodland	4	5
Funeral parlor	6	3
Gas distribution, gas pipeline	8	3
General retail, other	197	187
Graded and cared-for plots of la	17	18
Grain elevator, silo	0	0
Health Care, Detention & Correct	1	1
Health care, detention, & correc	41	64
Hemodialysis unit	7	3
High school/junior high school/m	130	109
Highway or divided highway	826	740
Hospices	13	16
Hospital - medical or psychiatri	467	421
Hotel/motel, commercial	194	213
Household goods, sales, repairs	6	4
Ice rink: indoor, outdoor	9	12
Ind., utility, defense, agricult	6	6
Industrial plant yard - area	10	7
Industrial, Utility, Defense, Ag	0	0
Jail, prison (not juvenile)	54	53
Laboratory or science laborato	5	6
Lake, river, stream	3	2
Laundry, dry cleaning	22	44
Library	35	32
Live performance theater	13	5
Livestock production	1	0
Livestock, poultry storage	1	0
Manufacturing, processing	52	43
Memorial structure, including mo	0	6
Mental retardation/development d	50	54
Mercantile, Business	3	8

Steven M. Pare  
Acting Chief of Department

Peter K. McMichael  
Acting Fire Marshal



## FIRE PREVENTION BUREAU

<u>Property Use</u>	<u>Current</u>	<u>Prop. Last Year</u>
Mercantile, business, other	395	358
Mine, quarry	1	0
Motor vehicle or boat sales, ser	23	21
Movie theater	5	7
Multifamily dwelling	8,579	8,845
Museum	6	8
None	6	3
Office: veterinary or research	28	25
Oil or gas field	1	0
Open land or field	56	65
Open ocean, sea or tidal waters	2	5
Outbuilding or shed	2	1
Outbuilding, protective shelter	5	3
Outside material storage area	3	1
Outside or Special Property	0	1
Outside or special property, oth	63	43
Outside storage tank	1	0
Parking garage, (detached reside	6	8
Parking garage, general vehicle	56	58
Passenger terminal, other	7	6
Personal service, including barb	38	39
Pipeline, power line or other ut	0	0
Places of worship, funeral parlor	7	4
Playground	78	69
Police station	78	41
Post office or mailing firms	28	25
Preschool	6	6
Professional supplies, services	11	11
Property Use, other	3	1
Public or government, other	88	52
Radio, television studio	1	0
Railroad right-of-way	4	2
Railroad yard	6	0
Rapid transit station	19	27
Recreational, hobby, home repair	7	3
Reformatory, juvenile detention	8	4
Refrigerated storage	1	0
Residential	7	15
Residential board and care	152	72
Residential or self-storage unit	3	3
Residential street, road or resi	3,346	3,867
Residential, other	956	601
Restaurant or cafeteria	524	509
Roller rink: indoor or outdoor	2	3
Sanitation utility	10	15
Schools, non-adult, other	165	132

Steven M. Pare  
Acting Chief of Department

Peter K. McMichael  
Acting Fire Marshal

## FIRE PREVENTION BUREAU

<u>Property Use</u>	<u>Current</u>	<u>Prop. Last Year</u>
Service station, gas station	39	40
Sorority house, fraternity house	3	0
Specialty shop	38	33
Stadium, arena	11	9
Steam or heat-generating plant	2	1
Storage	0	1
Storage, other	9	10
Street or road in commercial area	2,131	1,949
Street, other	1,732	1,298
Studio/theater, other	5	6
Swimming facility: indoor or out	3	6
Textile, wearing apparel sales	9	9
Tunnel	0	2
Undetermined	34	38
Utility or Distribution system,	13	8
Vacant lot	37	41
Variable-use amusement, recreati	36	19
Vehicle parking area	502	440
Vehicle storage, other	9	7
Warehouse	43	34
Water area, other	16	4
Water utility	3	0
Yacht Club	3	5
<b>Grand Totals:</b>	<b>43,121</b>	<b>43,281</b>

Steven M. Pare  
Acting Chief of Department

Peter K. McMichael  
Acting Fire Marshal

# FIRE PREVENTION BUREAU

## 2017 Fires by Property Use

### NATIONAL FIRE PROTECTION ASSOCIATION FIRE EXPERIENCE REPORT

Providence Fire Department

January 2017 to December 2017

#### Part III: BREAKDOWN OF STRUCTURE FIRES AND OTHER FIRES AND INCIDENTS

A. Fires In Structures By Fixed Property Use (Occupancy) (all in Section A are Incident Type 110-129)	Number Of Fires	Number of Civilian Fire Casualties	
		Deaths	Injuries
1. Private Dwellings	81	0	6
2. Apartments	193	0	0
3. Hotels and Motels	0	0	0
4. All Other Residential	60	0	0
5. TOTAL RESIDENTIAL FIRES	334	0	0
6. Public Assembly	15	0	0
7. Schools and Colleges	4	0	0
8. Health Care/Penal Institutions	3	0	0
9. Stores and Offices	9	0	0
10. Industry/Utility/Defense/Labs/Manufacturing	0	0	0
11. Storage in Structures	4	0	0
12. Other Structures	27	0	0
13. TOTAL STRUCTURE FIRES	396	0	0
14a. Highway Vehicles	63	0	0
14b. Other Vehicles	19	0	0
15. Non-Structure/Non-Vehicle	11	0	0
16. Brush/Grass/Wildland	83	0	
17. Rubbish/Dumpsters	94	0	
18. All Other Fires	113	0	0
19. TOTAL FOR FIRES	779	0	6
20. Rescue/Emergency Medical Responses	21,355		
21. False Alarms	6,506		
22. Mutual Aid Given	332		
23a. Hazmat Responses	346		
23b. Other Hazardous Responses	357		
24. All Other Responses	3,063		
25. TOTAL FOR ALL INCIDENTS	32,738		

Steven M. Pare  
Acting Chief of Department

Peter K. McMichael  
Acting Fire Marshal



## **FIRE PREVENTION BUREAU**

### **Public Education**

### **Public Education**

Public Educators from the Fire Prevention Bureau visited city schools on 132 occasions to teach valuable life safety drills to over 5000 students. Presentations were delivered to elderly housing complexes, nursing homes, day cares, YMCA, Boy Scouts of America, community events, and community centers throughout the city. Fire Safety educators also provided bicycle safety instruction at many community events, including PVDfest. FPB personnel secured donated bicycle safety equipment that were provided free of charge to children at our community events. Hundreds of Providence children now are equipped with bicycle helmets and safe riding instruction because of the efforts of our public educators. Two of our Inspectors have received child car seat installation training from the National Child Safety Certification and Lifespan and have provided infant and child car seat installation at numerous events throughout the city.

### **Firefighter Details/Mass Gathering Event Planning**

### **Firefighter Details/Mass Gathering Event Planning**

There were 2,105 Firefighter details scheduled by the Fire Prevention Bureau. Firefighter details are required by the Fire Marshal at places of assembly, special events, large events under tents, and other venues as required by fire code. The Firefighter detail's primary responsibility is to ensure that the appropriate alarm is transmitted to the Bureau of Operational Control in the event of an emergency. The detail also ensures that all safeguards are in place and that a dangerous condition does not exist that will negatively impact the safety of the public. FPB personnel are heavily involved in special event planning to safeguard the public and to prevent dangerous situations from arising. Some of these special events include Waterfire, the PVDfest in Downtown, and the 4<sup>th</sup> of July fireworks celebration in India Point Park. FPB Personnel take part in City Service meeting held bi-weekly to plan for such events.

### **Training**

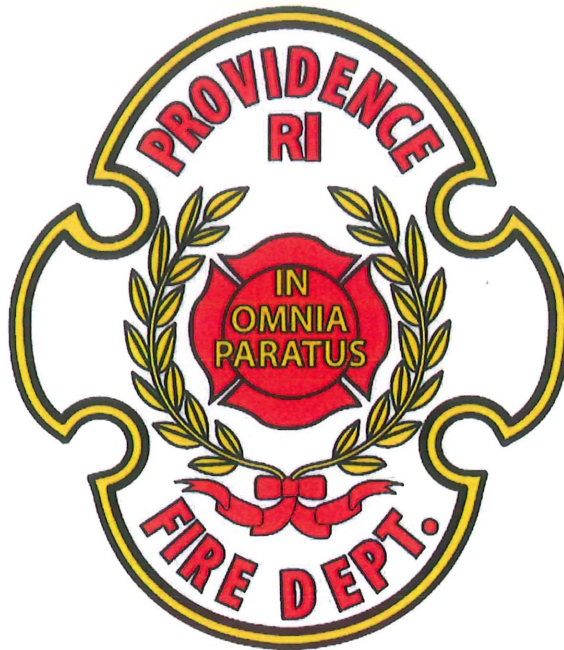
Providence Fire Department Fire Inspectors are certified by the State Fire Marshal as Assistant Deputy State Fire Marshals and by the National Fire Protection Agency as Certified Fire Inspectors. All Fire Inspectors take part in continuing education with the RI Fire Marshal's Association, by the National Fire Protection Agency, and with other fire safety organizations. Additionally, the Department's Fire Investigators received training from the International Association of Arson Investigators, the New York Fire Academy, and the National Fire Academy in Emmetsburg, Maryland.

**Steven M. Pare**  
Acting Chief of Department

**Peter K. McMichael**  
Acting Fire Marshal

# PROVIDENCE FIRE DEPARTMENT

## BUREAU OF OPERATIONAL CONTROL



# 2017 ANNUAL REPORT

STEVEN M. PARÉ  
Commissioner of Public Safety  
Acting Chief of Department

JORGE O. ELORZA  
Mayor



**BUREAU OF OPERATIONAL CONTROL**

Submitted by Captain Julia O'Rourke

Calendar Year 2017

2nd, 3rd and General Alarm Fires

Date of Fire	Location of Fire	Type of Fire
3-Jan-17	18 N. Davis Street	2nd Alarm
2-Feb-17	Carpenter/Palla Street	2nd Alarm
13-Feb-17	132 Bershire Street	2nd Alarm
3-Mar-17	460 Charles Street	2nd Alarm
13-Mar-17	75 Hamilon Street	2nd Alarm
14-Mar-37	29 Arch Street	2nd Alarm
22-Mar-17	907 Smith Street	2nd Alarm
24-Mar-17	27 Zone Street	2nd Alarm
3-Apr-17	1 Valley Street, 12th Floor	2nd Alarm
7-Apr-17	17 Rutland Street	2nd Alarm
19-May-17	387 Prairie Avenue	2nd Alarm
6-Jun-17	1 Valley Street, Apt. 1004	2nd Alarm
7-Jun-17	38 Dike Street, Wes' Rib House	2nd Alarm
27-Jun-17	8 Dennison Street	2nd Alarm
15-Jun-17	993 Manton Avenue, River Edge Village	2nd Alarm
18-Jun-17	9 SumterStreet	2nd Alarm
11-Aug-17	627 Chalkstone Avenue	2nd Alarm
12-Aug-17	754 Valley Street	2nd Alarm
26-Aug-17	94 Mitchell Street	2nd Alarm
25-Oct-17	708 Atwells Avenue	2nd Alarm
8-Nov-17	1 Valley Street	2nd Alarm
8-Nov-17	25 Reservoir Avenue	2nd Alarm
21-Nov-17	19 West Street	2nd Alarm
21-Nov-17	10 Fox Place	2nd Alarm
11-Dec-17	41 Ring Street	2nd Alarm
15-Dec-17	152 George M. Boulevard	2nd Alarm
16-Dec-17	932 Atwells Avenue	2nd Alarm
20-Dec-17	47 Superior Street	2nd Alarm



**PROVIDENCE FIRE DEPARTMENT**  
**TOTAL 2017 CALLS FOR SERVICE BY APPARATUS AND BY MONTH**

	Jan	Feb	Mar	Apr	May	Jun	Jul	Aug	Sept	Oct	Nov	Dec	Total
<b>RESCUE 1</b>	397	390	397	398	463	467	430	391	455	472	390	424	5,074
<b>RESCUE 2</b>	382	335	366	365	406	432	400	379	426	426	378	380	4,675
<b>RESCUE 3</b>	395	321	337	361	383	407	371	388	401	404	387	381	4,536
<b>RESCUE 4</b>	489	443	470	468	539	553	530	530	526	520	473	504	6,045
<b>RESCUE 5</b>	381	351	346	356	389	403	375	382	398	382	350	395	4,508
<b>RESCUE 6</b>	447	409	442	448	452	485	489	470	466	484	408	491	5,491
<b>RESCUE 7</b>	385	352	333	367	396	408	375	380	398	416	401	417	4,628
<b>AIR SUPPLY 1</b>	8	9	15	12	15	22	12	11	8	6	11	12	141
<b>ENGINE 2</b>	301	293	305	337	345	374	330	335	342	374	345	354	4,035
<b>ENGINE 3</b>	425	396	410	422	481	514	444	401	473	488	428	439	5,321
<b>ENGINE 4*</b>	22	0	0	0	0	0	0	0	0	0	0	0	22
<b>ENGINE 5*</b>	16	0	0	0	0	0	0	0	0	0	0	0	16
<b>ENGINE 6</b>	176	144	179	181	186	201	176	175	189	200	185	219	2,211
<b>ENGINE 7</b>	291	262	274	316	295	331	290	319	322	337	259	312	3,608
<b>ENGINE 8</b>	302	285	344	306	371	372	356	364	333	427	351	407	4,218
<b>ENGINE 9</b>	192	233	221	247	259	252	258	233	244	279	224	245	2,887
<b>ENGINE 10</b>	249	230	240	260	257	274	249	231	264	311	266	285	3,116
<b>ENGINE 11</b>	156	168	163	170	176	190	203	196	208	220	185	207	2,242
<b>ENGINE 12</b>	366	341	391	360	403	404	389	376	375	412	381	399	4,597
<b>ENGINE 13</b>	165	189	159	206	203	178	192	176	202	259	177	211	2,317
<b>ENGINE 14</b>	262	226	271	279	306	329	299	314	292	337	329	345	3,589
<b>ENGINE 15</b>	254	263	254	256	270	326	275	325	308	324	277	291	3,423
<b>SPECIAL HAZARDS 1</b>	132	129	155	150	143	159	156	130	159	151	157	159	1,780
<b>TOWER LADDER 1</b>	162	177	222	198	244	241	221	203	228	266	220	224	2,606
<b>TOWER LADDER 2</b>	113	124	122	133	150	155	161	129	157	194	193	187	1,818
<b>LADDER 3</b>	143	150	151	118	134	123	150	137	138	162	130	139	1,675
<b>LADDER 4*</b>	28	0	0	0	0	0	0	0	0	0	0	0	28
<b>LADDER 5</b>	113	126	98	127	120	116	133	115	140	159	135	135	1,517
<b>LADDER 6</b>	136	123	153	145	193	196	160	174	162	168	166	186	1,962
<b>LADDER 7</b>	145	120	149	161	151	162	149	154	146	178	148	163	1,826
<b>LADDER 8</b>	108	121	142	156	146	130	163	142	146	185	156	155	1,750
<b>DIVISION 1</b>	72	26	29	26	25	35	22	16	16	20	19	24	330
<b>BATTALION 1</b>	95	113	118	122	144	140	151	125	138	153	111	154	1,564
<b>BATTALION 2</b>	67	98	111	104	140	123	118	111	112	139	136	157	1,416
<b>BATTALION 3</b>	123	117	127	138	141	151	135	145	140	170	138	150	1,675
<b>CAR 56A</b>	8	4	12	8	7	18	13	5	9	12	12	9	117
<b>CAR 56B</b>	4	5	9	2	8	4	6	5	5	4	5	11	68
<b>CAR 56C</b>	6	14	10	9	10	7	3	7	8	5	9	6	94
<b>CAR 56D</b>	3	4	9	9	5	7	6	11	5	6	9	11	85
<b>C79A</b>	4	4	2	1	2	2	1	0	0	1	0	0	17
<b>C79B</b>	1	2	3	0	0	0	0	0	0	0	1	2	9
<b>MARINE 1</b>	0	0	0	0	0	0	3	1	0	0	0	0	4
<b>SPECIAL RESPONSE UNIT 1</b>	0	1	1	1	0	0	0	0	1	3	1	1	9

THESE FIGURES ARE FROM THE COMPUTER AIDED DISPATCH SYSTEM.