

THE CITY OF PROVIDENCE
STATE OF RHODE ISLAND AND PROVIDENCE PLANTATIONS

RESOLUTION OF THE CITY COUNCIL

No. 47

Approved January 28, 1977

Resolution approving the accompanying plans entitled Disposition
Dedication Maps for the redevelopment of the East Side Renewal Project
R. I. R-4 consisting of cover sheet and fifteen (15) sheets, Stanley P.
Blacher, Chairman, et al, Scale 1" = 40.0' or as indicated, depicting
the areas for dedication as public rights-of-way to the City of
Providence, under the provisions of Chapter 987 of the Public Laws of
1913 and thereafter declared public rights-of-way to be repaired and
maintained at the expense of the City of Providence.

IN CITY COUNCIL

JAN 20 1977
READ AND PASSED

[Signature]
PRES.
[Signature]
CLERK

APPROVED

MAYOR

[Signature]

JAN 28 1977

DEPT. OF CLERK
PROVIDENCE, R.I.
OCT 1 3 03 PM '76

63 11

IN CITY COUNCIL

OCT 7 1976

FIRST READING
REFERRED TO COMMITTEE ON URBAN REDEVELOPMENT
RENEWAL & PLANNING

Vernice Waples
CLERK

Commissioner Lynch,
Commissioner Addison and
Commissioner Larson,
By Request

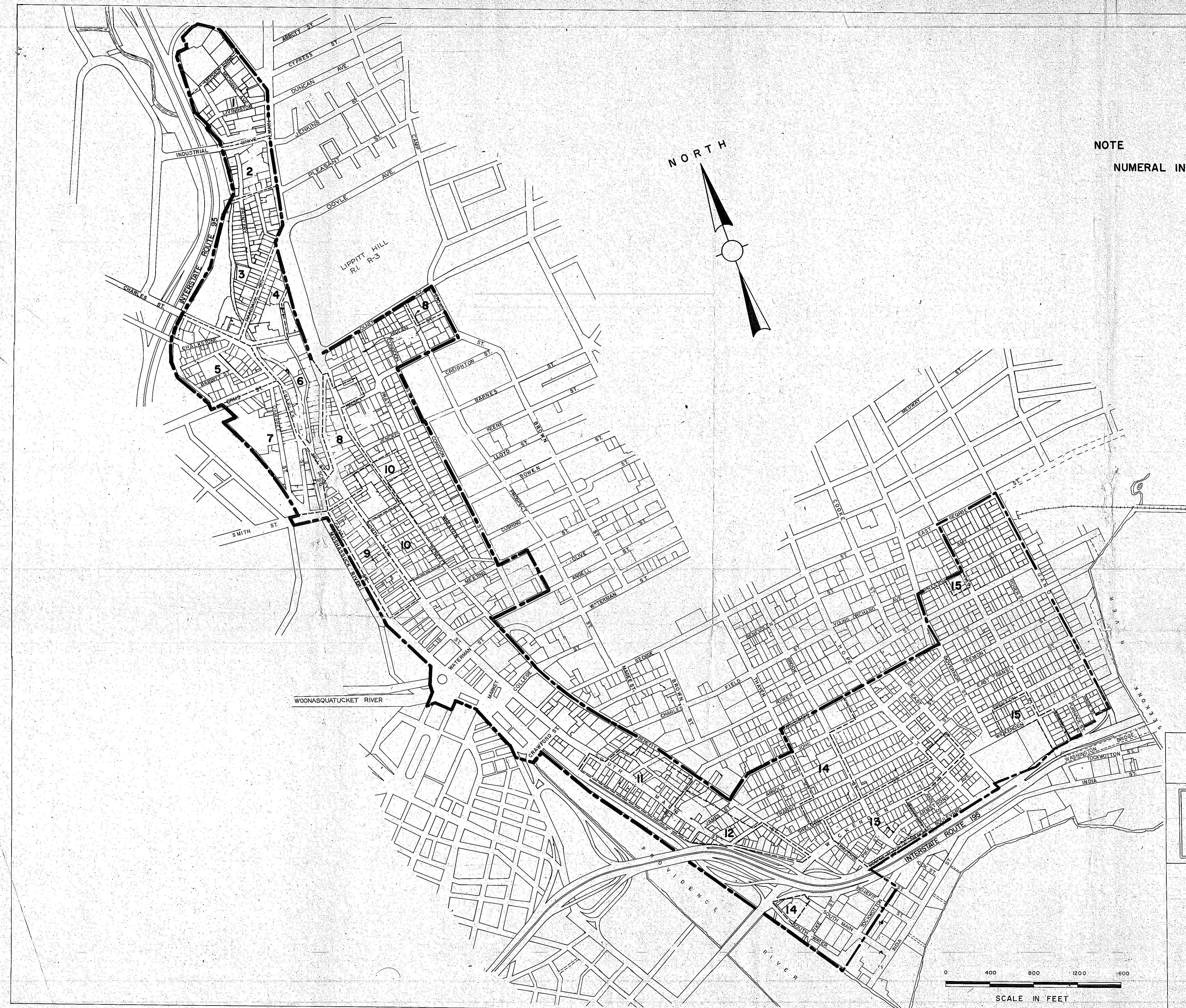
THE COMMITTEE ON
URBAN REDEVELOPMENT
RENEWAL & PLANNING

Approves Passage of
The Within Resolution

Vernice Waples
Jan. 12, 1977 Clerk

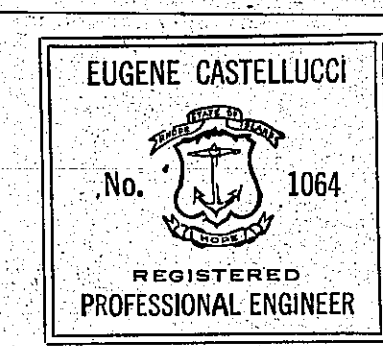
MAILED
OCT 10 1976

MAILED
OCT 10 1976



NOTE
NUMERAL INDICATES MAP NUMBER

DISPOSITION - DEDICATION MAPS

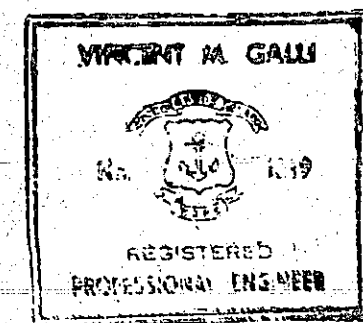
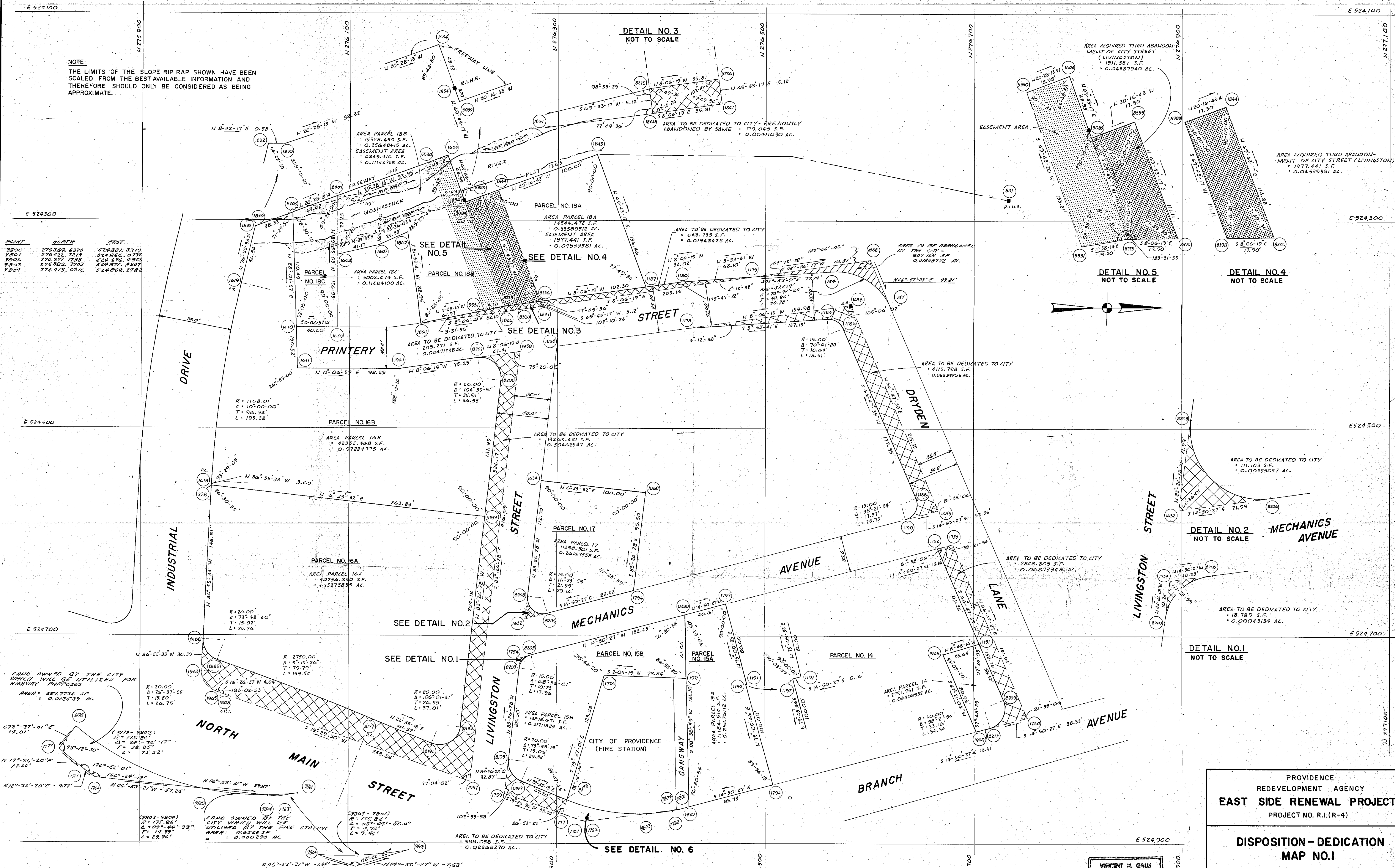


PREPARED BY
CASTELLUCCI, GALLI ASSOCIATES
CONSULTING ENGINEERS
PROVIDENCE, RHODE ISLAND

SHEET LOCATION PLAN FOR THE
DISPOSITION DEDICATION MAPS FOR
THE REDEVELOPMENT OF EAST SIDE
RENEWAL PROJECT R.I. R-4

NOTE:
THE LIMITS OF THE SLOPE RIP RAP SHOWN HAVE BEEN
SCALED FROM THE BEST AVAILABLE INFORMATION AND
THEREFORE SHOULD ONLY BE CONSIDERED AS BEING
APPROXIMATE.

POINT	NORTH	EAST
9800	276369.6370	524881.3319
9801	276462.2219	524866.0782
9802	276377.1793	524876.0923
9803	276383.3763	524877.8367
9804	276413.0216	524868.2984



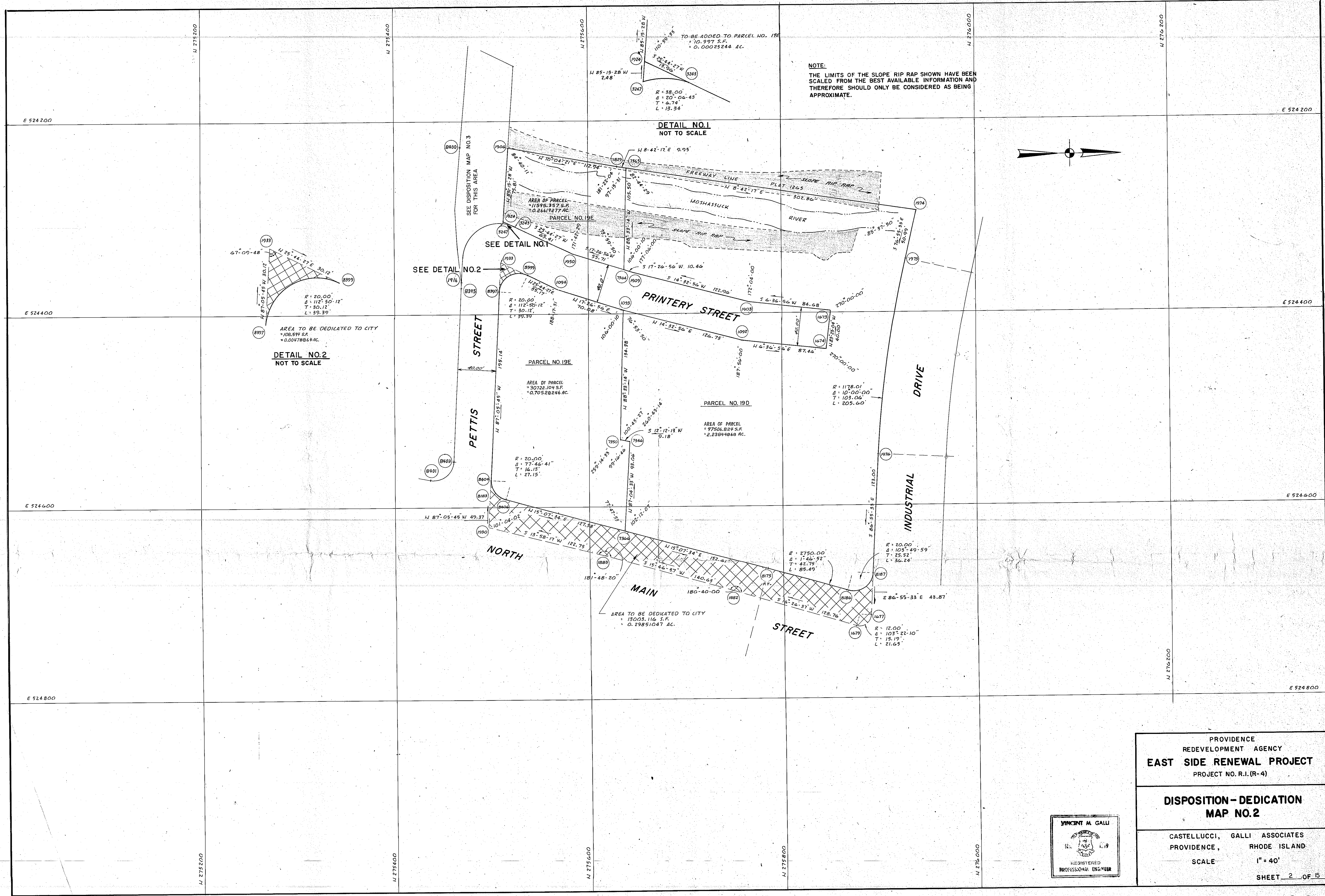
PROVIDENCE
REDEVELOPMENT AGENCY
EAST SIDE RENEWAL PROJECT
PROJECT NO. R.I.(R-4)

**DISPOSITION - DEDICATION
MAP NO.1**

CASTELLUCCI, GALLI ASSOCIATES
PROVIDENCE, RHODE ISLAND

SCALE 1" = 40'

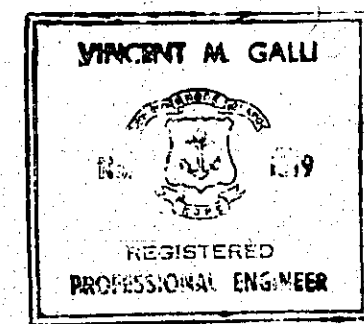
SHEET 1 OF 15

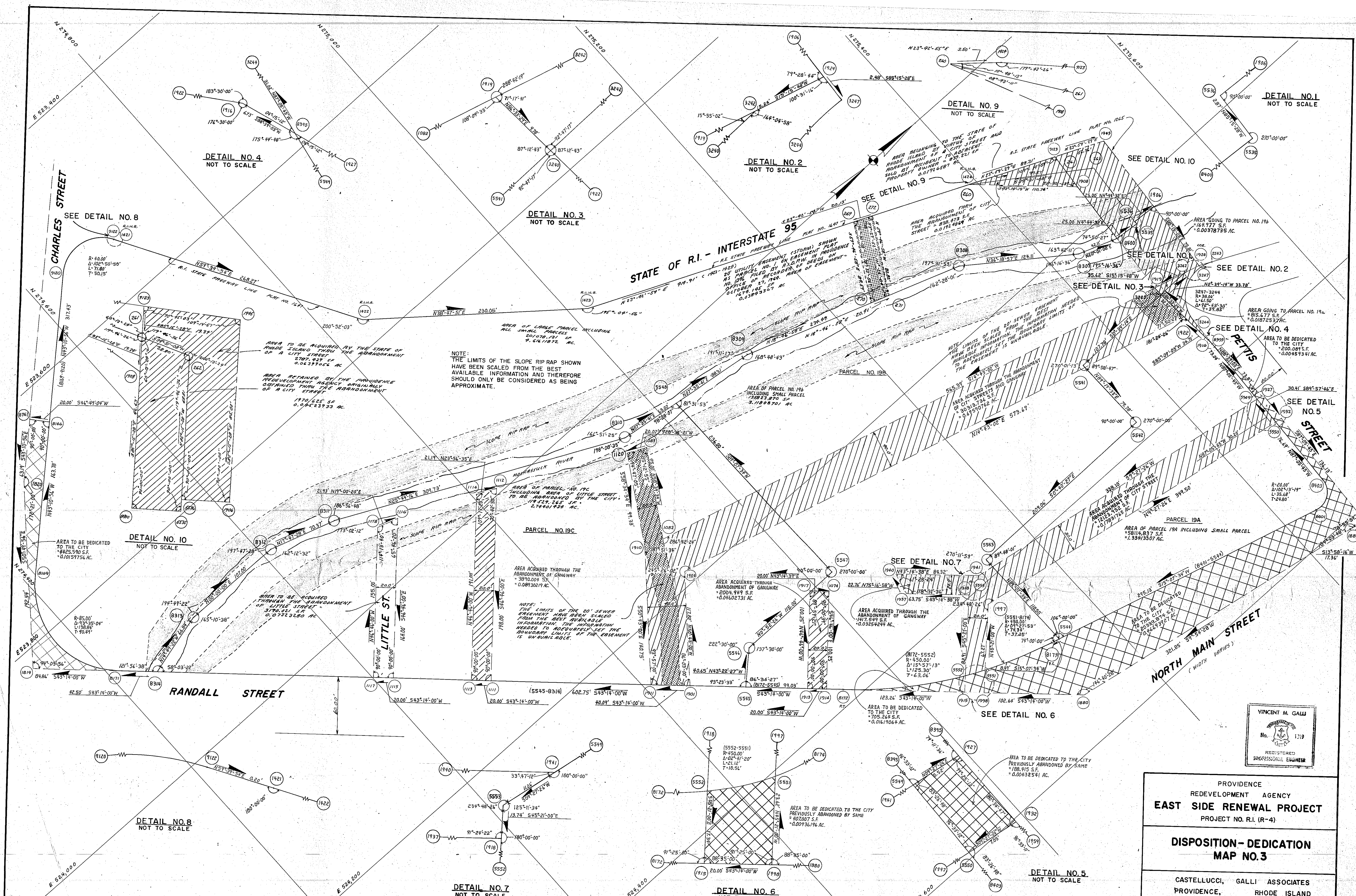


PROVIDENCE
REDEVELOPMENT AGENCY
EAST SIDE RENEWAL PROJECT
PROJECT NO. R.I.(R-4)

**DISPOSITION-DEDICATION
MAP NO.2**

CASTELLUCCI, GALLI ASSOCIATES
PROVIDENCE, RHODE ISLAND
SCALE 1" = 40'
SHEET 2 OF 15





VINCENT M. GALLI
No. 1319
REGISTERED
PROFESSIONAL ENGINEER

PROVIDENCE
REDEVELOPMENT AGENCY
EAST SIDE RENEWAL PROJECT
PROJECT NO. R.I. (R-4)

**DISPOSITION - DEDICATION
MAP NO. 3**

CASTELLUCCI, GALLI ASSOCIATES
PROVIDENCE, RHODE ISLAND
SCALE 1" = 40'

