

ROBERT P. CEPRANO  
*Tax Collector*



DAVID N. CICILLINE  
*Mayor*

**Finance Department**

**CITY COLLECTOR**

Collector's Certificate #56

April 25, 2005

TO THE HONORABLE CITY COUNCIL OF THE CITY OF PROVIDENCE:

Pursuant to the provisions of Section 44-7-14 of the General Laws of Rhode Island, 1956, as amended, the undersigned City Collector of the City of Providence hereby requests your Honorable Body to cancel the following taxes or such part thereof as may be requested as same are determined to be uncollectable as herein set forth.

**Real Estate Tax – Plat 44 Lot 390 – 280 Elmwood Avenue**

<u>Year</u>	<u>Assessed as of</u>	<u>Amount Due</u>
1994	12/31/1993	\$2,304.08
1997	12/31/1996	<u>\$5,307.62</u>
<b>Total</b>		<b>\$7,611.70*</b>

\*Providence Plan Housing took over this property in 1993. It was considered Tax Exempt for 1995 and 1996. Providence Plan Housing in turn, sold this property in 1997 to Malvina Monteiro.

A handwritten signature in dark ink, appearing to read "Robert P. Ceprano", is written over a horizontal line.

Robert P. Ceprano  
City Collector

IN CITY COUNCIL  
SEP 1 2005

APPROVED: Claire Bestuzova, Acting City Clerk

IN CITY COUNCIL  
MAY 5 2005  
FIRST READING  
REFERRED TO COMMITTEE ON  
CLAIMS AND PENDING SUITS

*Michael R. Clement*

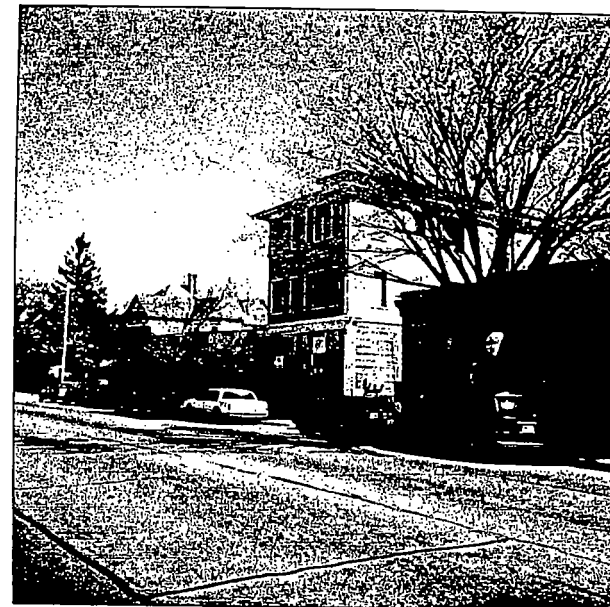
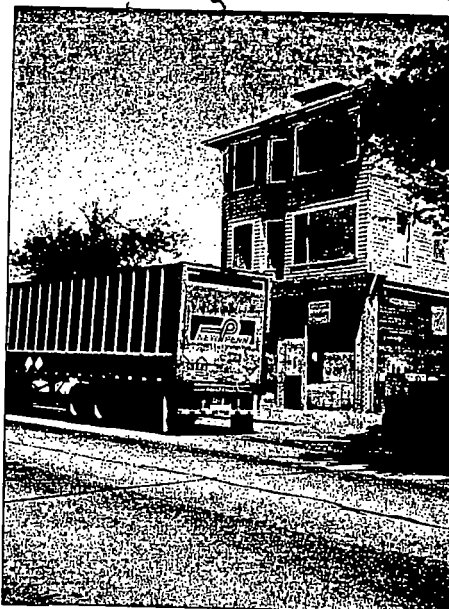
THE COMMITTEE ON  
CLAIMS AND PENDING SUITS  
Recommends Approval

AUG 24 2005

CLERK

*From The Clerk's Desk*

GENERAL DATA		DWELLING DATA & COMPUTATIONS					
PROPERTY TYPE	01	NUMBER OF LIVING UNITS: DESIGNED <u>3</u> CONVERSION					
VACANT LOT	02	TYPE OF DWELLING UNIT: (1) DETACHED (2) SEMI-DET. OR ROW TYPE					
DWELLING	03	STORY HEIGHT-DESIGN: (1) CONVENTIONAL (2) BI-LEVEL (3) MULTI-LEVEL					
COMMERCIAL	CODING FOR ATTIC FINISH & BASEMENT / CRAWL AREAS						
INDUSTRIAL	0 - NONE 1 - 1/4 2 - 1/2 3 - 3/4 4 - FULL						
OTHER							
LS	04	BASE AREA	STORY HEIGHT	WALLS	FIN. LIVING AREA	REPL. COST	
100/AMTR.	05	127.5	12.0	12	127.5		
UCCO	06	127.5	12.0	12	127.5		
E	07	127.5	12.0	12	127.5		
NC. BLK.	08	127.5	12.0	12	127.5		
TAL	09	127.5	12.0	12	127.5		
NCRETE	10	127.5	12.0	12	127.5		
ICK	11	127.5	12.0	12	127.5		
ONE	12	127.5	12.0	12	127.5		
w/MAS.	13	127.5	12.0	12	127.5		
FING	14	127.5	12.0	12	127.5		
I. SHGL.	15	127.5	12.0	12	127.5		
E/TILE	16	127.5	12.0	12	127.5		
IL	17	127.5	12.0	12	127.5		
POSITION	18	127.5	12.0	12	127.5		
LATION	19	127.5	12.0	12	127.5		
FING	20	127.5	12.0	12	127.5		
EATING	21	127.5	12.0	12	127.5		
WARM AIR	22	127.5	12.0	12	127.5		
OR STEAM	23	127.5	12.0	12	127.5		
HEATING	24	127.5	12.0	12	127.5		
RAL AIR	25	127.5	12.0	12	127.5		
AIR	26	127.5	12.0	12	127.5		
MBING	27	127.5	12.0	12	127.5		
PLUMBING	28	127.5	12.0	12	127.5		
ER ONLY	29	127.5	12.0	12	127.5		
L. FIX.	30	127.5	12.0	12	127.5		
NKLER	31	127.5	12.0	12	127.5		
JRS	32	127.5	12.0	12	127.5		
H	33	127.5	12.0	12	127.5		
B JOISTS	34	127.5	12.0	12	127.5		
WB-OR FIR.	35	127.5	12.0	12	127.5		
IUEY	36	127.5	12.0	12	127.5		
ET	37	127.5	12.0	12	127.5		
NISHED	38	127.5	12.0	12	127.5		
FINISH	39	127.5	12.0	12	127.5		
T. or D.W.	40	127.5	12.0	12	127.5		
ILING	41	127.5	12.0	12	127.5		
BOARD	42	127.5	12.0	12	127.5		
NISHED	43	127.5	12.0	12	127.5		
VG ACCOMMODATIONS	44	127.5	12.0	12	127.5		
BER OF ROOMS	45	127.5	12.0	12	127.5		
ROOMS	46	127.5	12.0	12	127.5		
LY ROOMS	47	127.5	12.0	12	127.5		
AL DINING ROOMS	48	127.5	12.0	12	127.5		
BATHS	49	127.5	12.0	12	127.5		
BATHS	50	127.5	12.0	12	127.5		



6/10/99 44/ 280 ELWOOD AVE AA-390  
A100

TYPE CODE		1	2	3	4	5	6
		10	11	12	13	14	15
1. GARAGE	20. MOBILE HOME	01	99	DWELLING/OTC		620	
2. CARPORT	21. WOOD DECK	02		GARAGE/CARPORT			
3. PATIO	22. BALCONIES	03	98				
4. SHED	23. GAZEBOS	04					
5. POOL	24. ELEVATOR	05					
6. BATH HOUSE	25. FENCING	06					
7. SHED	26. TRAILER ADDN.	07					
8. SHELTER	27. TENNIS COURT	08					
9. STABLE	28. TRAILER PAD	09					
10. SUMMER KITCHEN	29. MOBILE HOME/	10					
11. CELLAR	REAL PROPERTY	11					
12. WELL HOUSE	40. OFF-SHED-APP	12					
13. BLACK TOP PAVING	41. CARPAGES	13	00				
14. CONCRETE PAVING	42. FEED LOT						
15. PAVING	43. GREEN HOUSE						
16. FLAT BARN	44. FIREPLACE						
17. DARK BARN	45. KENNEL						
18. HOLL BARN	46. SEA WALL						
19. LEAN TO	47. BOAT HOUSE						
20. IMPLEMENT SHED	48. OTHER						
21. POULTRY HOUSE	51. COM./INDUS						
22. HOG HOUSE	52. MISC. BUILDING						
23. MILK HOUSE	53. SMOKE HOUSE						
24. CHUR.	54. AIR COND.						
25. CHURCHY	55. CONCRETE PAD						
26. BIN	56. WELL/SEPTIC						
27. BLDG	57. CONC./STR. BSMT.						
28. CASH	58. COM./EXEMPT						
14. NO. OF ENTRIES							
15. 1 SEE DETAILED REPORT							

