

THE CITY OF PROVIDENCE
STATE OF RHODE ISLAND AND PROVIDENCE PLANTATIONS

RESOLUTION OF THE CITY COUNCIL

No. 101

Approved March 12, 1976

RECEIVED
CITY CLERK
MAR 12 1976

RESOLVED, DECREED AND ORDERED,

That Gay Street, from Somerset Street to Pearl Street be layed out as a Public Highway, all in accordance with accompanying Petition of Rhode Island Hospital, dated September 12, 1976, and Plan Entitled, Providence, R.I., P.W. Dept. Engineering Office, Street Line Section, Plan No. 063841, dated September 4, 1974.

IN CITY COUNCIL

MAR 4 1976
READ AND PASSED

Ralph Fargnoli PRES.
Vincent Casper CLERK

APPROVED
Vincent Casper
MAYOR

MAR 12 1976

THE COMMITTEE ON
PUBLIC WORKS

Approves Passage of
The Within Resolution

Wincent W. W. W.

March 11, 1926 *Chair*

WAR & PAIR

CITY OF PROVIDENCE
STATE OF RHODE ISLAND AND PROVIDENCE PLANTATIONS

PETITION TO THE CITY COUNCIL

TO THE HONORABLE CITY COUNCIL OF THE CITY OF PROVIDENCE:

The undersigned owners of the adjoining land hereby petitions the Mayor and City Council to lay out a Relocation of Gay Street, from Somerset Street, to Pearl Street, as a public highway, said Relocation to be in accordance with a certain plan entitled "P.W. Dept. - Engineering Office/Street Line Section/ Plan No. 063841/ Date-Sept. 4, 1974/ Showing Proposed Relocation of Gay St./ Drawn by Waterman Eng. - Scale 1" = 30'," a copy of which is filed herewith as Exhibit A.

RHODE ISLAND HOSPITAL

By

Donald W. Davis

VICE PRES

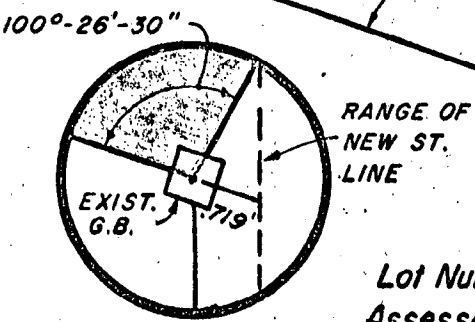
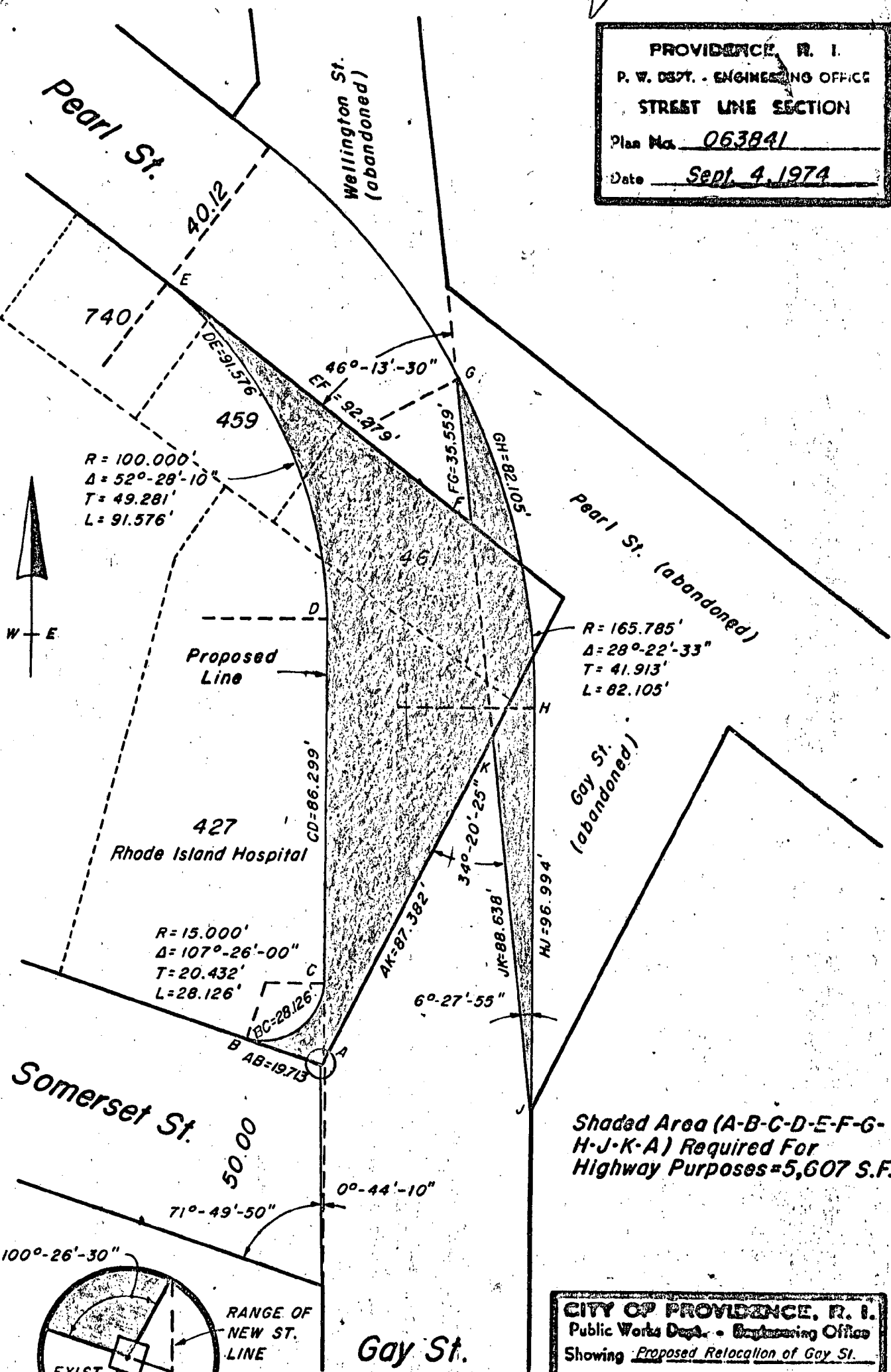
September 22, 1975

FILED
SEP 23 10 05 AM '75
DEPT. OF CITY CLERK
PROVIDENCE, R.I.

IN CITY COUNCIL
OCTOBER 2, 1975
FIRST READING
REFERRED TO COMMITTEE ON PUBLIC WORKS
Amos T. Rogers
CLERK

Councilman Mansolillo and
Councilman Hensley, by Request

PROVIDENCE, R. I.
P. W. DEPT. - ENGINEERING OFFICE
STREET LINE SECTION
Plan No. 063841
Date Sept. 4, 1974



Gay St.
50.15
Lot Numbers From
Assessor's Plat 23

CITY OF PROVIDENCE, R. I.
Public Works Dept. - Engineering Office
Showing Proposed Relocation of Gay St.
Drawn by Waterman Eng. Checked by _____
Scale 1" = 30' Date Sept. 4, 1974
Correct _____ Associate Engr.
Approved Joseph S. Camar
CHIEF ENGINEER