

THE CITY OF PROVIDENCE
STATE OF RHODE ISLAND AND PROVIDENCE PLANTATIONS

RESOLUTION OF THE CITY COUNCIL

No. 30

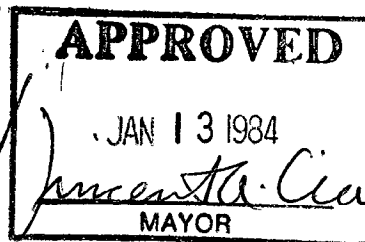
Approved January 13, 1984

Resolved that the City of Providence does hereby accept and authorize the Recorder of Deeds to accept for recording a certain conveyance from the Providence Redevelopment Agency to the City of Providence for highway purposes of certain parcels of real estate as depicted and shaded on the attached plans numbered 064257 thru 064275 inclusive dated November 3, 1983.

IN CITY COUNCIL

JAN 5, 1984
READ AND PASSED

[Signature]
PRES.
[Signature]
CLERK



THE COMMISSIONER OF

RECORDS

CLERK

FILED

NOV 13 9 38 AM '83

DEPT. OF PUBLIC WORKS
PROVIDENCE, R.I.

CLERK

SEAL

READ AND PASSED
... 2 ...
IN CITY COUNCIL

13

RECEIVED
NOV 13 1983

THE COMMITTEE ON
PUBLIC WORKS

Recommends

Clerk

IN CITY COUNCIL

NOV 17 1983

FIRST READING

REFERRED TO COMMITTEE ON PUBLIC WORKS

Recommends
CLERK

Councilman Glavin and Councilman Dillon (By Request)

STANLEY P. BLACHER
Chairman

FREDERICK LIPPITT
Vice Chairman

JOSEPH MOLlicONE

LESLIE A. HENSHAW

JOSEPH M. CERILLI

THOMAS M. GLAVIN

DAVID G. DILLON

STANLEY BERNSTEIN
*Executive Director
and Secretary*



PROVIDENCE REDEVELOPMENT AGENCY

November 10, 1983

MAYOR VINCENT A. CIANCI, JR.
Ex-Officio

Mrs. Rose Mendonca
City Clerk
City Hall
Providence, Rhode Island 02903

RE: Weybosset Hill Renewal Project R.I. R-7
Dedication for Highway Purposes

Dear Mrs. Mendonca:

Transmitted herewith is a resolution of the City Council requesting the City of Providence to accept the dedication of the attached parcels of land for highway purposes from the Providence Redevelopment Agency.

Said parcels are located within the Weybosset Hill Renewal Project R.I. R-7. The plans for the aforesated dedications were approved by letter from the Department of Public Works on November 3, 1983, a copy of which is attached.

We would appreciate it if the aforesated resolution is placed on the docket for the next City Council Meeting.

Very truly yours,

A handwritten signature in dark ink, appearing to read "Stanley Bernstein", is written over the typed name and title.
Stanley Bernstein
Executive Director

SB/BMS
WGF

FILED

NOV 14 9 05 AM '83

DEPT. OF JUSTICE
PROVIDENCE, R.I.

FRANK TIBALDI
~~JOSEPH C. DESANTIS~~
DIRECTOR OF PUBLIC WORKS



VINCENT A. CIANCI, JR.
MAYOR

DEPARTMENT OF PUBLIC WORKS

November 3, 1983


Mrs. Rose Mendonca
City Clerk
City Hall
Prov., R. I.

RE: PUBLIC RIGHTS-OF-WAY

Dear Mrs. Mendonca:

The Department of Public Works, City of Providence requests approval of accompanying plans for the Weybosset Hill Project No. R-1, R-7 depicting areas for Dedication as Public Rights-of-Way and to be received, repaired and maintained by the City.

Very truly yours,

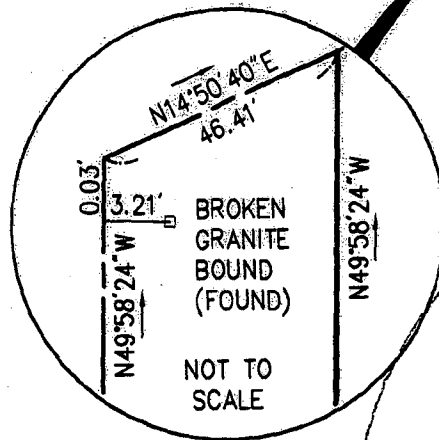
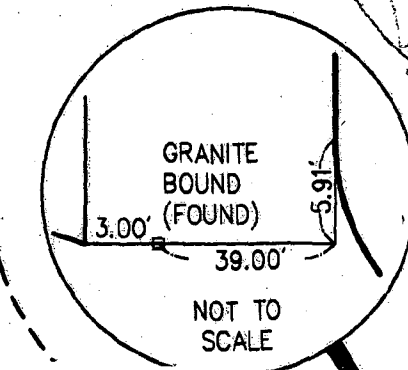

Frank Tibaldi, Director

FT/me

Unrecorded Plan References

1. "LAND TITLE SURVEY PLAN SURVEY OF THE 'HOLIDAY INN DOWNTOWN PROVIDENCE' FOR FIRST PROVIDENCE HOTEL INVESTORS, LLC. OTHERWISE DESIGNATED AS ASSESSOR'S PLAT 26, ASSESSOR'S LOT 347; PLAN DATE 04/18/05; SURVEY DATE: 12/09/04; SCALE: 1"=20'; SHEET 1 OF 2; DWG NO.: 20041104-01; BY LOUIS FEDERICI & ASSOCIATES 365 SMITH STREET, SUITE 2 PROVIDENCE, R.I. 02908

**ATWELLS
AVENUE**



ABORN STREET

CITY COUNCIL RESOLUTION NO. 30 APPROVED JANUARY 13, 1984
(STATUS UNKNOWN)

N49°58'24"W

479.90'

**A.P. 26 LOT 254
208,338± SQ. FT.
4.78279± ACRES**

A.P. 26 LOT 254
N/F CITY OF PROVIDENCE
DEED BOOK 1234 PAGE 55

LAUREN

X 2059

2nd Floor

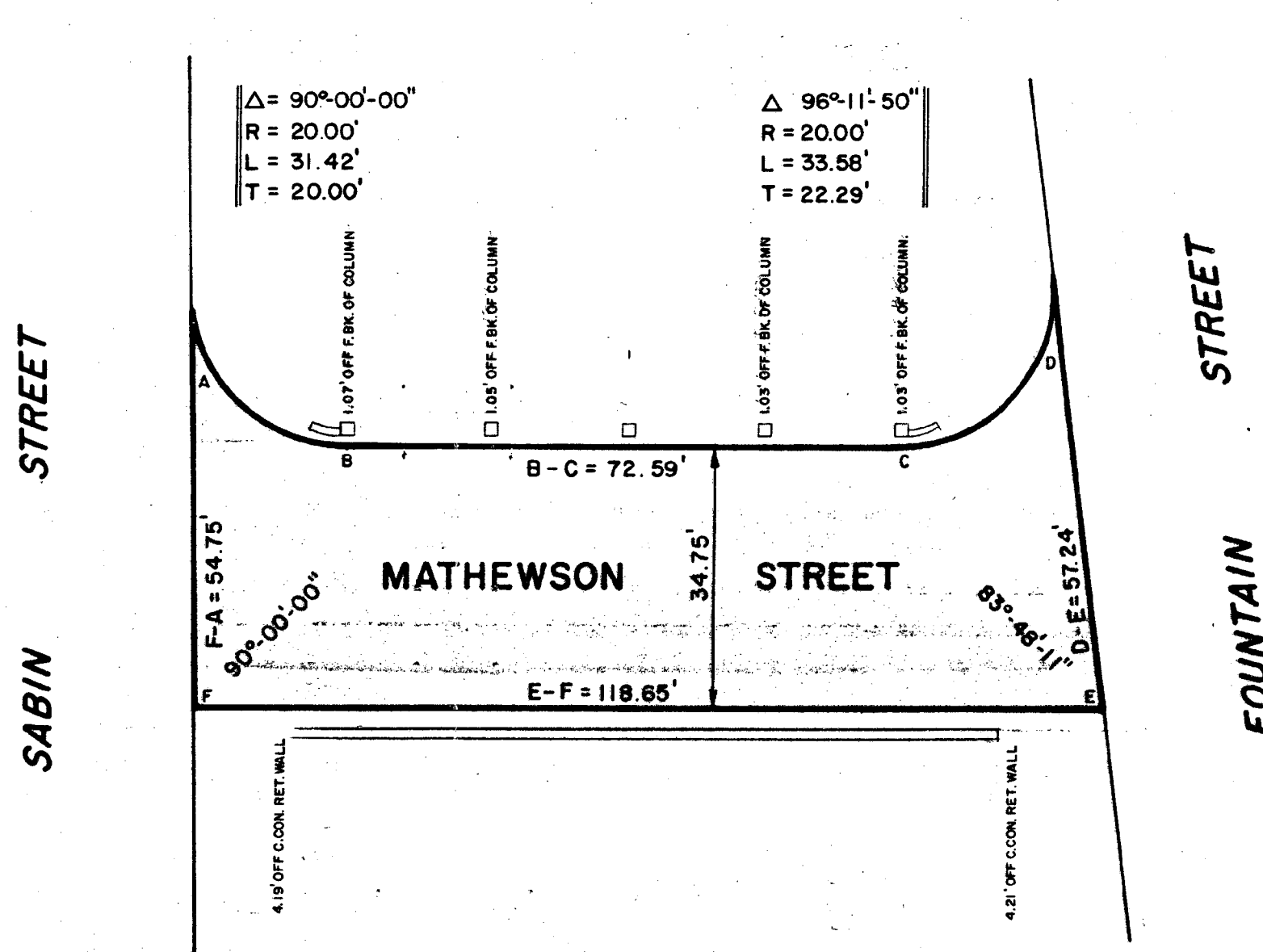
NOTE:
SHADED AREA DEEDED FOR
HIGHWAY PURPOSES. THIS
PLAN SUPERSEDES ALL
PREVIOUSLY COMPLETED MAPS.

PLAT OF
MATHEWSON STREET

From Sabin Street To Fountain Street

Scale 1"=20'

PROVIDENCE R. I.
P. W. DEPT. - ENGINEERING OFFICE
STREET LINE SECTION
Plan No. 064269
Date November 3, 1983



PREPARED BY
GAROFALO
LEONARD A. GAROFALO & ASSOCIATES, INC.
ENGINEERS / SURVEYORS / PLANNERS
SUITE 4A, 101 DYER STREET
PROVIDENCE, R.I. 02903
DATE: JANUARY 5, 1981

OFFICE NO. 27335
DRAWER 89
SHEET B-32

PLAT OF

From Broadway To A Point

Scale 1"=40'

Sheet 1 Of 2

Plan No. 064272

Date November 3, 1983



SHADED AREA DEEDED FOR
HIGHWAY PURPOSES. THIS
PLAN SUPERSEDES ALL
PREVIOUSLY COMPLETED MAPS.

OFFICE NO. 27338

DRAWER 89

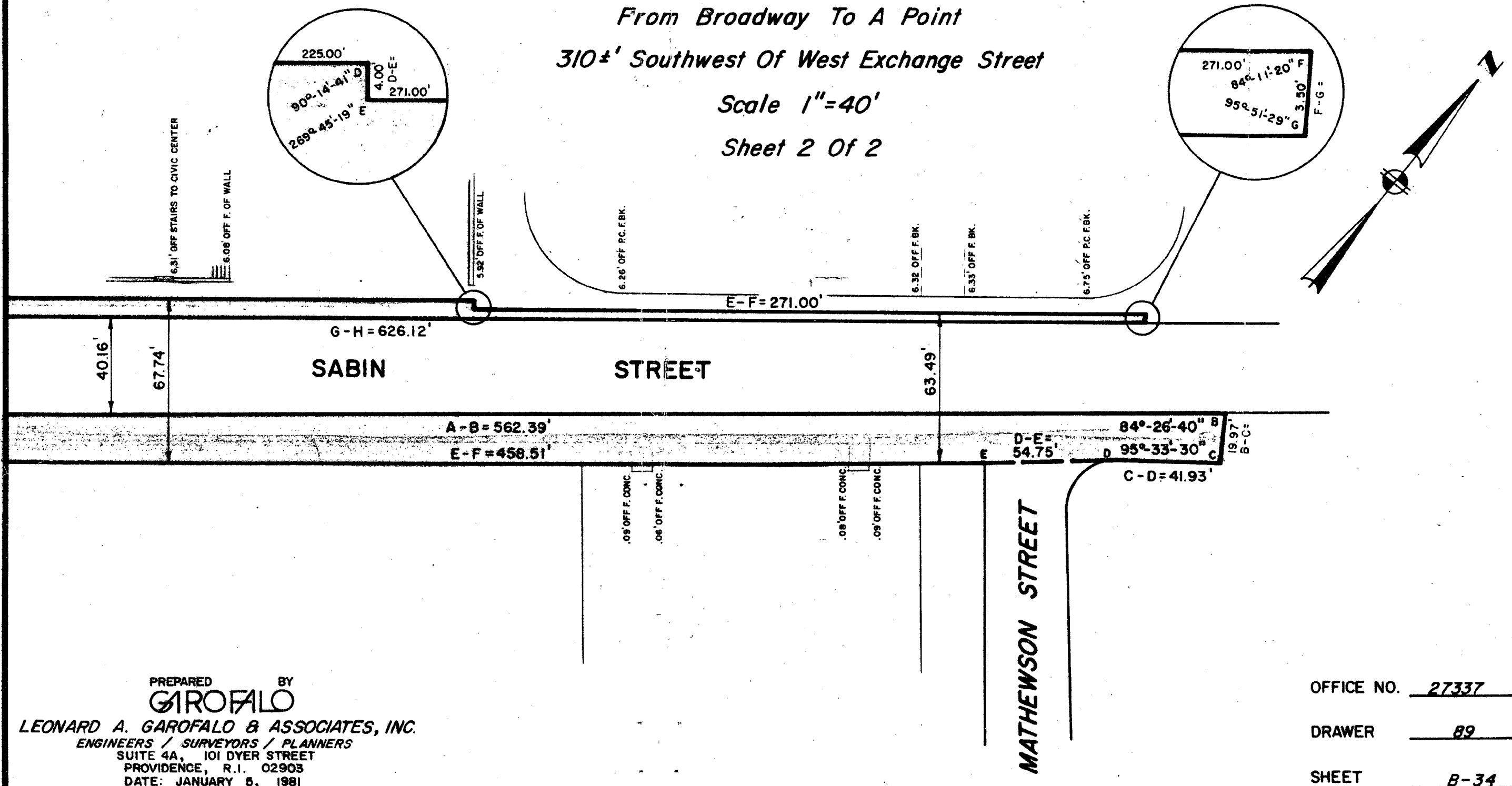
SHEET *B-35*

PREPARED BY
GAROFALO
LEONARD A. GAROFALO & ASSOCIATES, INC.
ENGINEERS / SURVEYORS / PLANNERS
 SUITE 4A, 101 DYER STREET
 PROVIDENCE, R.I. 02903
 DATE: JANUARY 5, 1981

NOTE:
SHADED AREA DEEDED FOR
HIGHWAY PURPOSES. THIS
PLAN SUPERSEDES ALL
PREVIOUSLY COMPLETED MAPS.

PLAT OF
SABIN STREET
Widening
From Broadway To A Point
310±' Southwest Of West Exchange Street
Scale 1"=40'
Sheet 2 Of 2

PROVIDENCE R. I.
P. W. DEPT. - ENGINEERING OFFICE
STREET LINE SECTION
Plan No. 064271
Date November 3, 198



PREPARED BY
GAROFALO
LEONARD A. GAROFALO & ASSOCIATES, INC.
ENGINEERS / SURVEYORS / PLANNERS
SUITE 4A, 101 DYER STREET
PROVIDENCE, R.I. 02903
DATE: JANUARY 5, 1981

OFFICE NO. 27337
DRAWER 89
SHEET B-34

NOTE:

SHADED AREA DEEDED FOR
HIGHWAY PURPOSES. THIS
PLAN SUPERSEDES ALL
PREVIOUSLY COMPLETED MAPS.

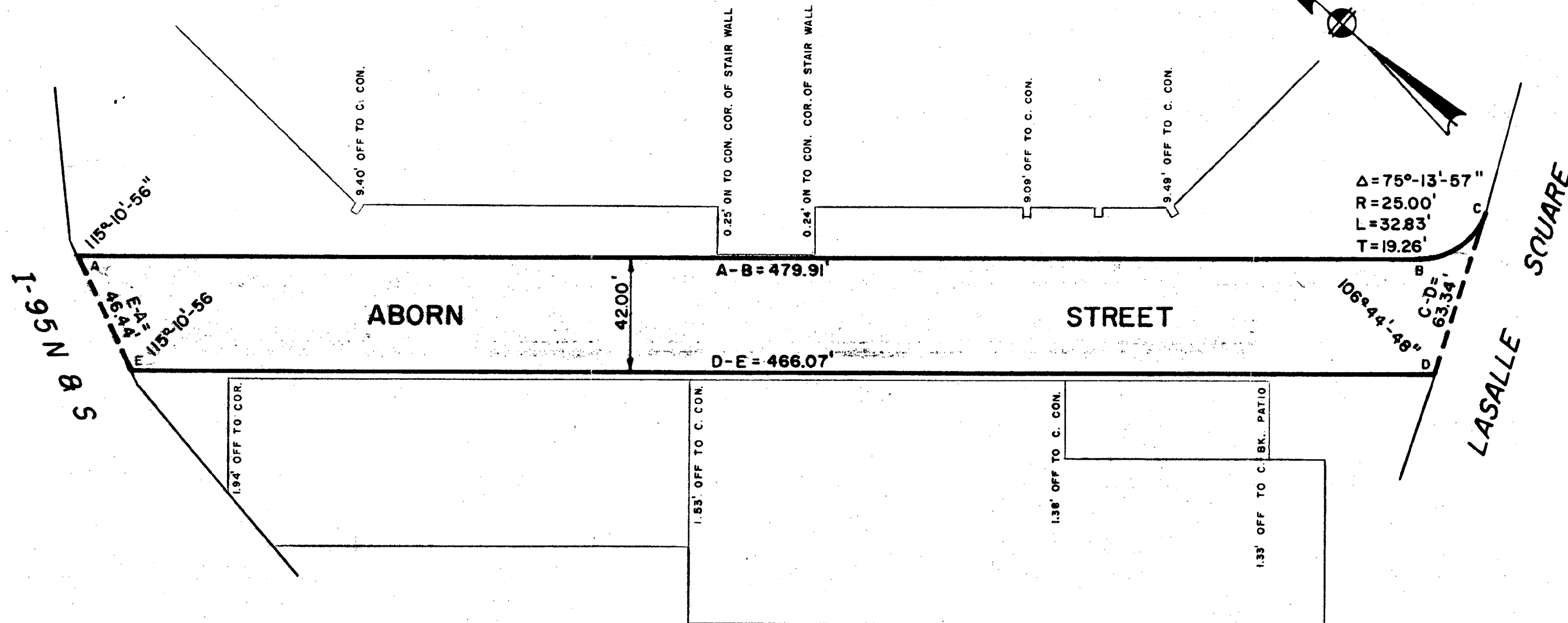
PLAT OF

ABORN STREET

From North-South Freeway I-95 To Broadway

Scale 1"=40'

PROVIDENCE R. I.
P. W. DEPT. - ENGINEERING OFFICE
STREET LINE SECTION
Plan No. 064257
Date November 3, 1983



PREPARED BY
GIROFALO
LEONARD A. GAROFALO & ASSOCIATES, INC.
ENGINEERS / SURVEYORS / PLANNERS
SUITE 4A, 101 DYER STREET
PROVIDENCE, R.I. 02903
DATE: JANUARY 5, 1981

OFFICE NO. 27323
DRAWER 89
SHEET B-20

NOTE:

SHADED AREA DEEDED FOR
HIGHWAY PURPOSES. THIS
PLAN SUPERSEDES ALL
PREVIOUSLY COMPLETED MAPS

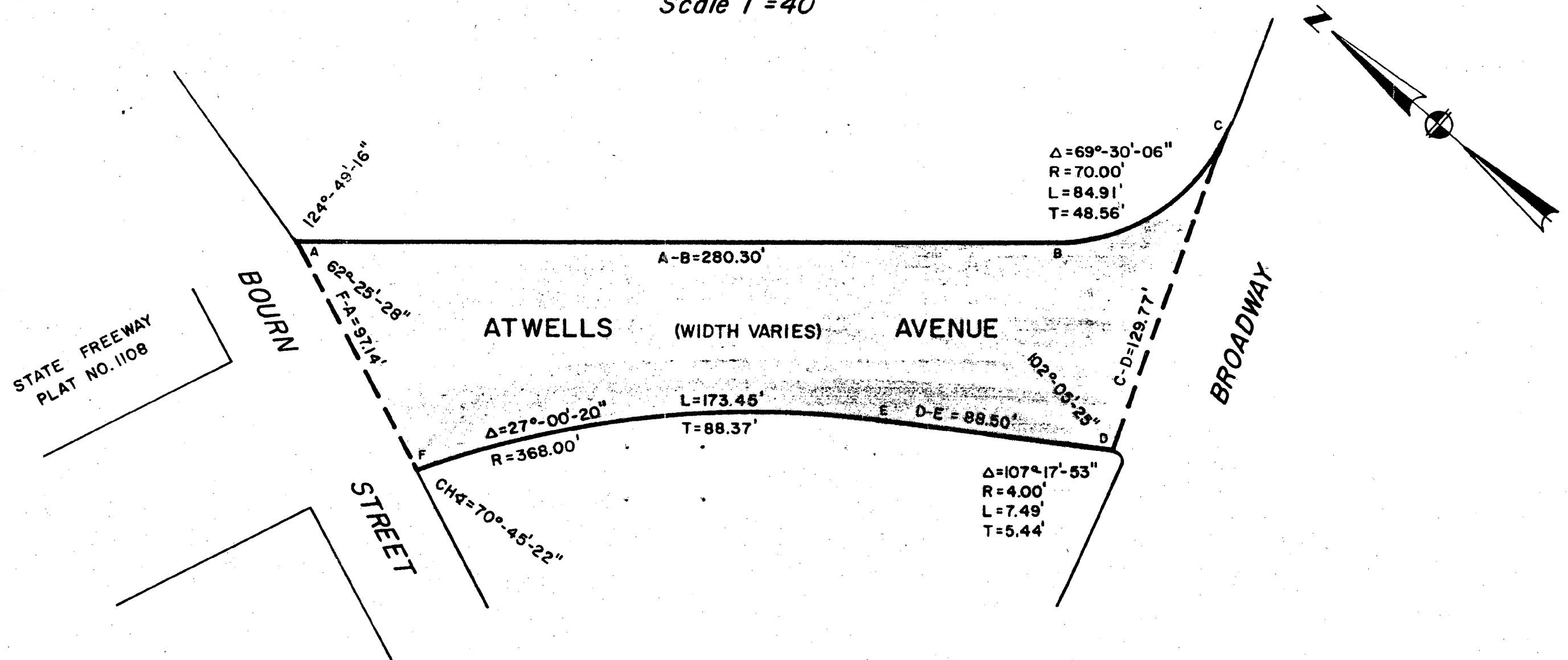
PLAT OF

ATWELLS AVENUE

From Bourn Street To Broadway

Scale 1"=40'

PROVIDENCE R. I.
P. W. DEPT. - ENGINEERING OFFICE
STREET LINE SECTION
Plan No. <u>064258</u>
Date <u>November 3, 1983</u>



PREPARED BY
GAROFALO
LEONARD A. GAROFALO & ASSOCIATES, INC.
ENGINEERS / SURVEYORS / PLANNERS
SUITE 4A, 101 DYER STREET
PROVIDENCE, R.I. 02903
DATE: JANUARY 3, 1981

OFFICE NO. 27324
DRAWER 89
SHEET B-21

NOTE:

SHADED AREA DEEDED FOR
HIGHWAY PURPOSES. THIS
PLAN SUPERSEDES ALL
PREVIOUSLY COMPLETED MAPS

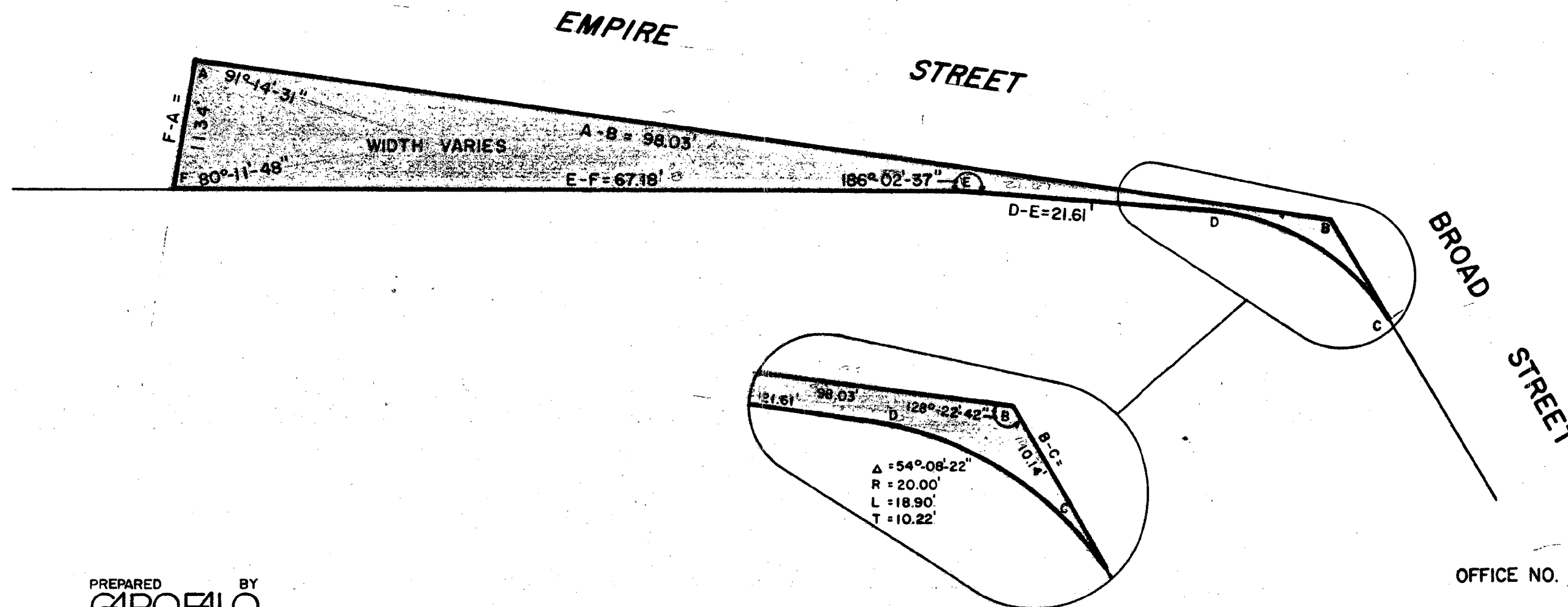
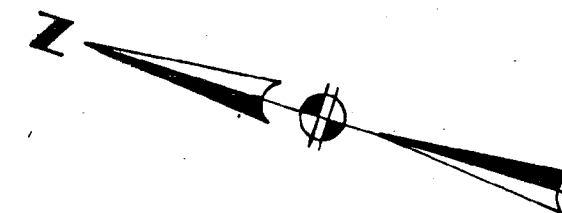
PLAT OF BROAD STREET

Widening

At The Most Southwest Corner Of Empire Street

Scale 1"=10'

PROVIDENCE R. I.
P. W. DEPT. - ENGINEERING OFFICE
STREET LINE SECTION
Plan No. 064259
Date November 3, 1983



PREPARED BY
GAROFALO
LEONARD A. GAROFALO & ASSOCIATES, INC.
ENGINEERS / SURVEYORS / PLANNERS
SUITE 4A, 101 DYER STREET
PROVIDENCE, R.I. 02903
DATE: JANUARY 5, 1981

OFFICE NO. 27325
DRAWER 89
SHEET B-22

PLAT OF
CATHEDRAL SQUARE PARK

NOTE:

SHADED AREA DEEDED FOR
WALKWAY PURPOSES. THIS
PLAN SUPERSEDES ALL
PREVIOUSLY COMPLETED MAPS

Public Walkway

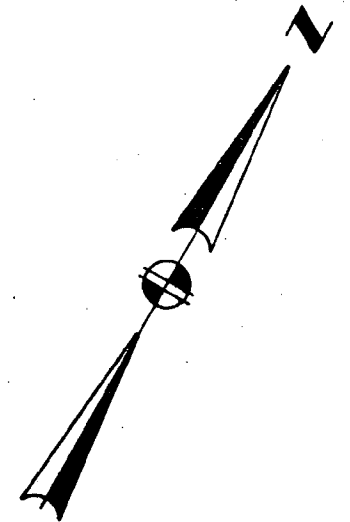
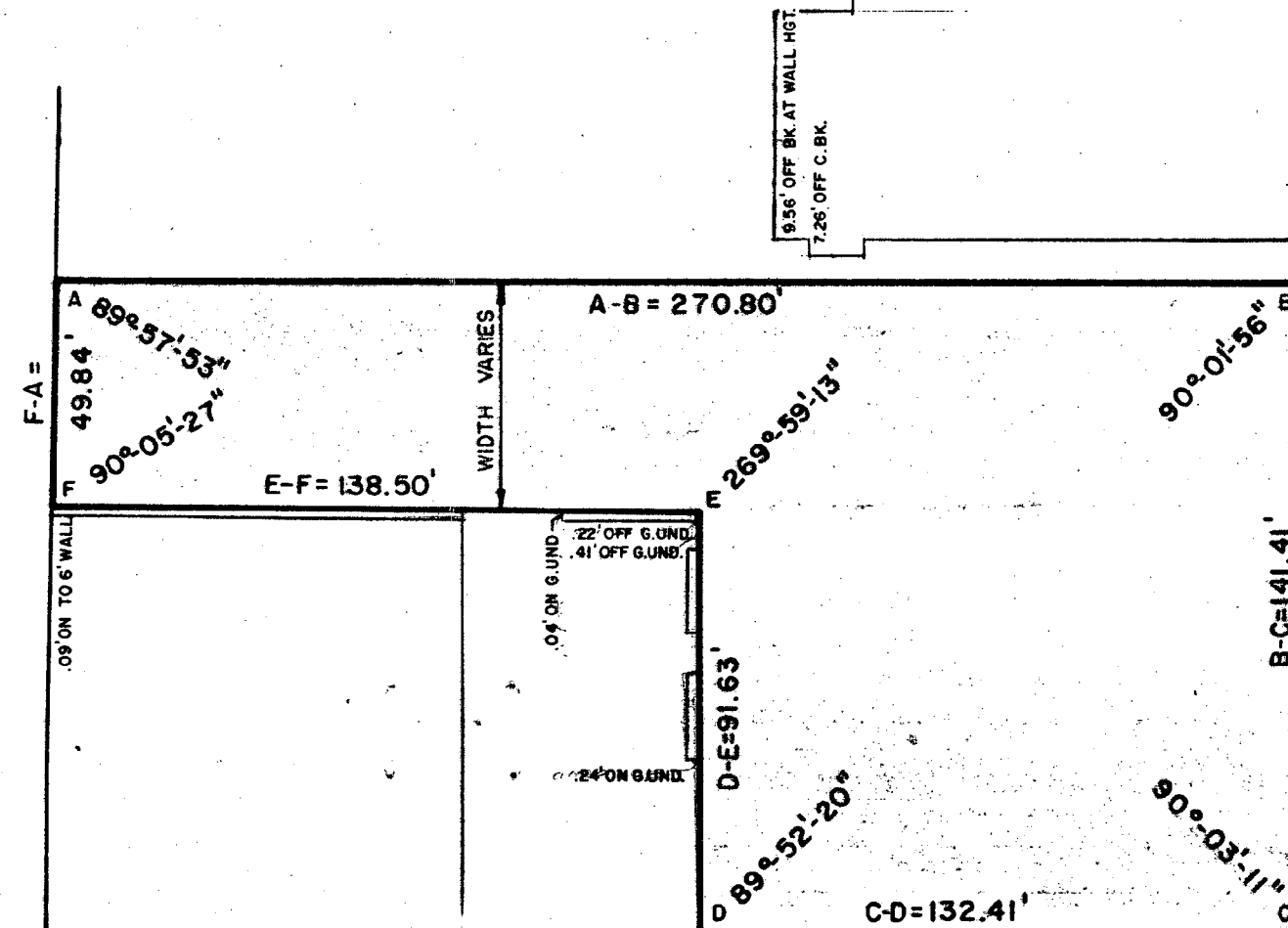
From Franklin Street To Jackson Street

Scale 1"=40'

PROVIDENCE R. I.
P. W. DEPT. - ENGINEERING OFFICE
STREET LINE SECTION
Plan No. 064262
Date November 3, 1983

FRANKLIN STREET

JACKSON STREET



**CATHEDRAL
SQUARE**

**WESTMINSTER
STREET**

PREPARED BY
GAROFALO
LEONARD A. GAROFALO & ASSOCIATES, INC.
ENGINEERS / SURVEYORS / PLANNERS
SUITE 4A, 101 DYER STREET
PROVIDENCE, R.I. 02903
DATE: JANUARY 5, 1981

OFFICE NO. 27328
DRAWER 89
SHEET B-25

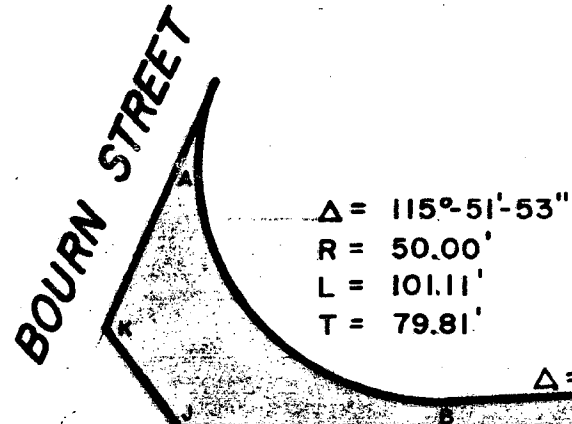
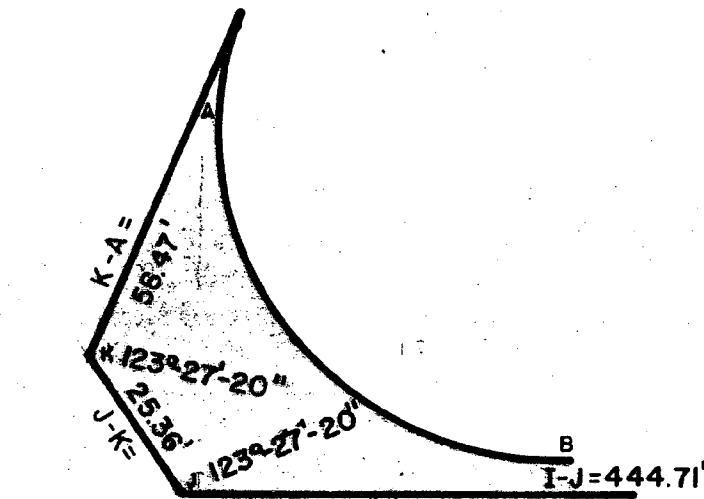
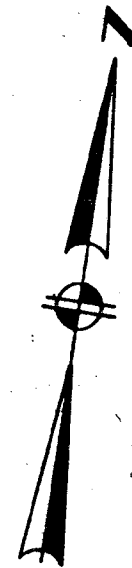
PLAT OF
BROADWAY

Widening

From Bourn Street To Sabin Street

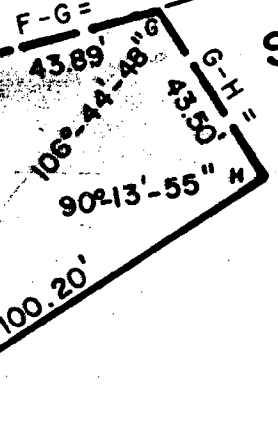
Scale 1"=40'

PROVIDENCE R. I.
P. W. DEPT. - ENGINEERING OFFICE
STREET LINE SECTION
Plan No. 064260
Date November 3, 1983



Δ = 107°-17'-53"
R = 4.00'
L = 7.49'
T = 5.44'

Δ = 2°-17'-15"
R = 2058.00'
L = 82.19'
T = 41.09'



SABIN STREET

BROADWAY (WIDTH VARIES)

EMPIRE STREET

GREENE ST.

NOTE:
SHADED AREA DEEDED FOR
HIGHWAY PURPOSES. THIS
PLAN SUPERSEDES ALL
PREVIOUSLY COMPLETED MAPS

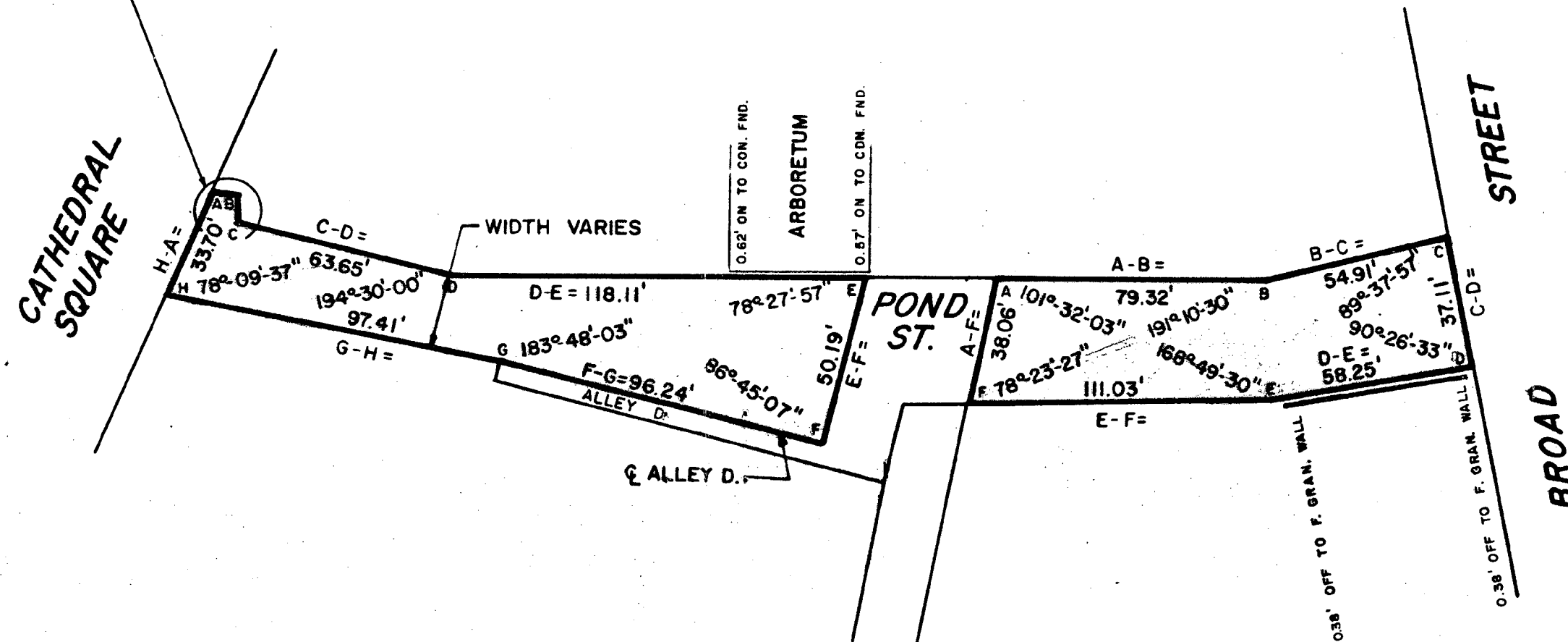
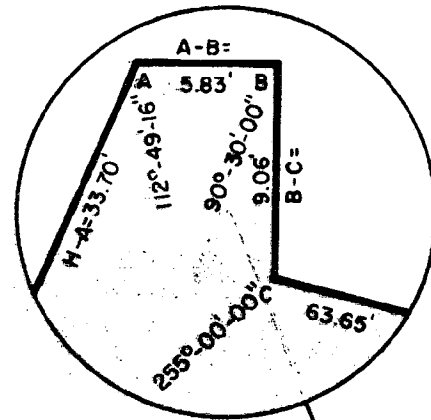
OFFICE NO. 27326
DRAWER 89
SHEET B-23

PREPARED BY
GIROFALO
LEONARD A. GAROFALO & ASSOCIATES, INC.
ENGINEERS / SURVEYORS / PLANNERS
SUITE 4A, 101 DYER STREET
PROVIDENCE, R.I. 02903
DATE: JANUARY 5, 1981
REVISED: NOV. 1981

PLAT OF
CATHEDRAL SQUARE

Public Walkway
From Cathedral Square To Broad Street
Scale 1"=40'

PROVIDENCE R. I.
P. W. DEPT. - ENGINEERING OFFICE
STREET LINE SECTION
Plan No. 064261
Date November 3, 1983



PREPARED BY
GIROFALO
LEONARD A. GIROFALO & ASSOCIATES, INC.
ENGINEERS / SURVEYORS / PLANNERS
SUITE 4A, 101 DYER STREET
PROVIDENCE, R.I. 02903
DATE: JANUARY 5, 1981

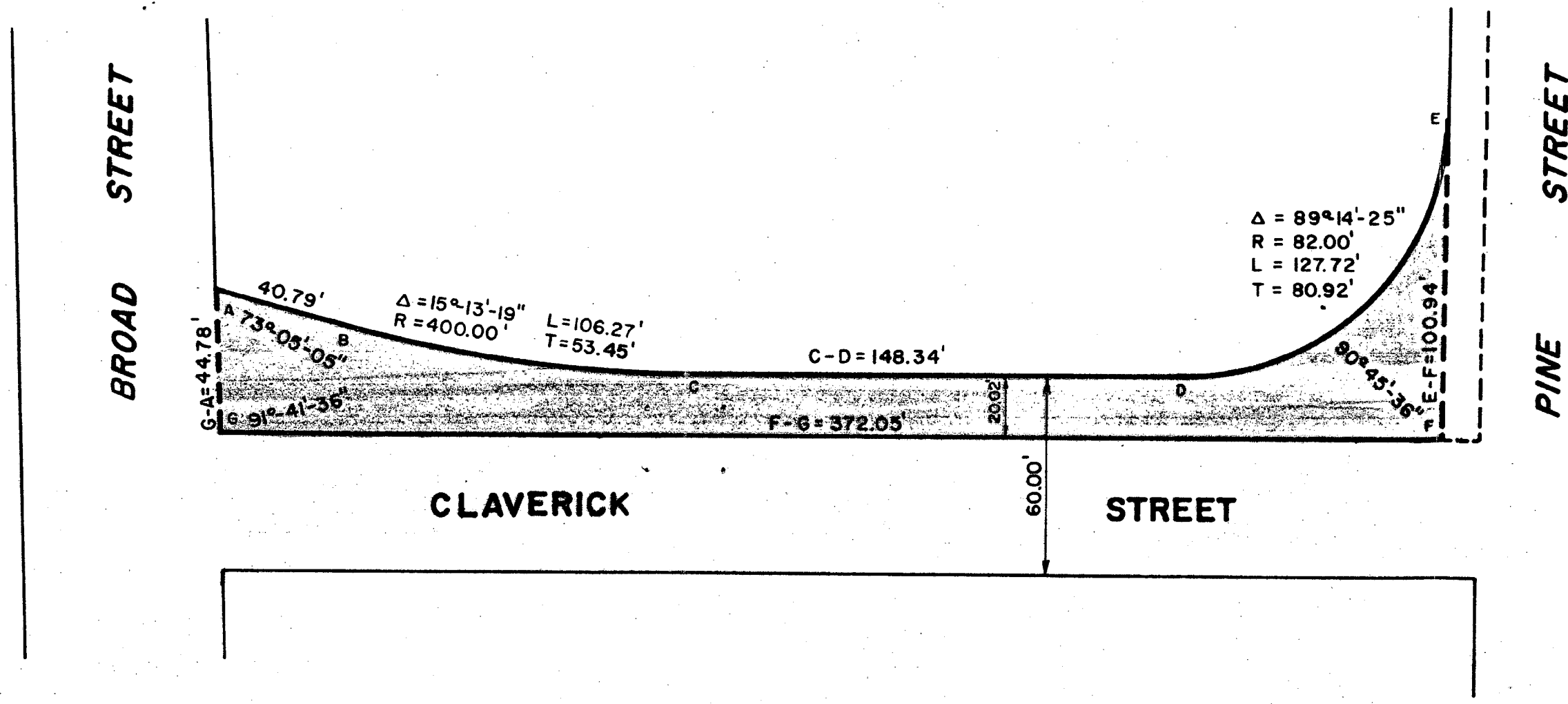
NOTE:
SHADED AREA DEEDED FOR
WALKWAY PURPOSES. THIS
PLAN SUPERSEDES ALL
PREVIOUSLY COMPLETED MAPS

OFFICE NO. 27327
DRAWER 89
SHEET B-24

NOTE :
SHADED AREA DEEDED FOR
HIGHWAY PURPOSES. THIS
PLAN SUPERSEDES ALL
PREVIOUSLY COMPLETED MAPS.

PLAT OF
CLAVERICK STREET
Widening
From Broad Street To Pine Street
Scale 1" = 40'

PROVIDENCE R. I.
P. W. DEPT. ENGINEERING OFFICE
STREET LINE SECTION
Plan No. <u>064263</u>
Date <u>November 3, 1983</u>



PREPARED BY
GAROFALO
LEONARD A. GAROFALO & ASSOCIATES, INC.
ENGINEERS / SURVEYORS / PLANNERS
SUITE 4A, 101 DYER STREET
PROVIDENCE, R.I. 02903
DATE: JANUARY 5, 1981

OFFICE NO. 27329
DRAWER 89
SHEET B-26

NOTE:
SHADED AREA DEEDED FOR
WALKWAY PURPOSES. THIS
PLAN SUPERSEDES ALL
PREVIOUSLY COMPLETED MAPS

PLAT OF

FENNER STREET

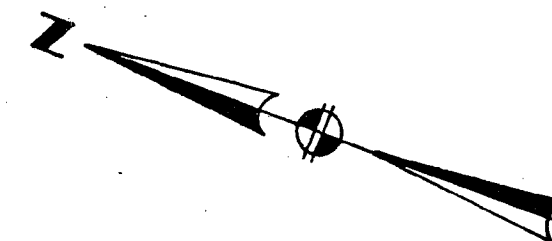
Widening - Public Walkway

From Cathedral Square To A Point

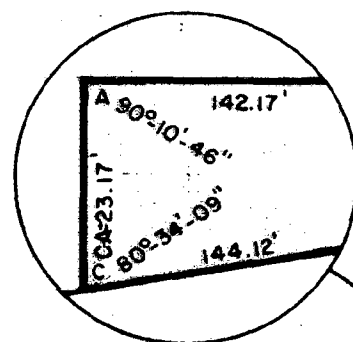
79±' Northwest Of Pond Street

Scale 1"=40'

PROVIDENCE R. I.
P. W. DEPT. - ENGINEERING OFFICE
STREET LINE SECTION
Plan No. 064264
Date November 3, 1983



CATHEDRAL SQUARE



WIDTH VARIES

FENNER

STREET

40.15'

A-B = 142.17'
B-C = 144.12'

9° 15' 05"

0.46' OFF TO GRAN. UND.

POND STREET

PREPARED BY
GIROFALO

LEONARD A. GAROFALO & ASSOCIATES, INC.

ENGINEERS / SURVEYORS / PLANNERS
SUITE 4A, 101 DYER STREET
PROVIDENCE, R.I. 02903
DATE: JANUARY 5, 1981

OFFICE NO. 27330

DRAWER 89

SHEET B-27

NOTE:

SHADED AREA DEEDED FOR
HIGHWAY PURPOSES. THIS
PLAN SUPERSEDES ALL
PREVIOUSLY COMPLETED MAPS.

PLAT OF

FOUNTAIN STREET

From Franklin Street To Greene Street

Scale 1"=40'

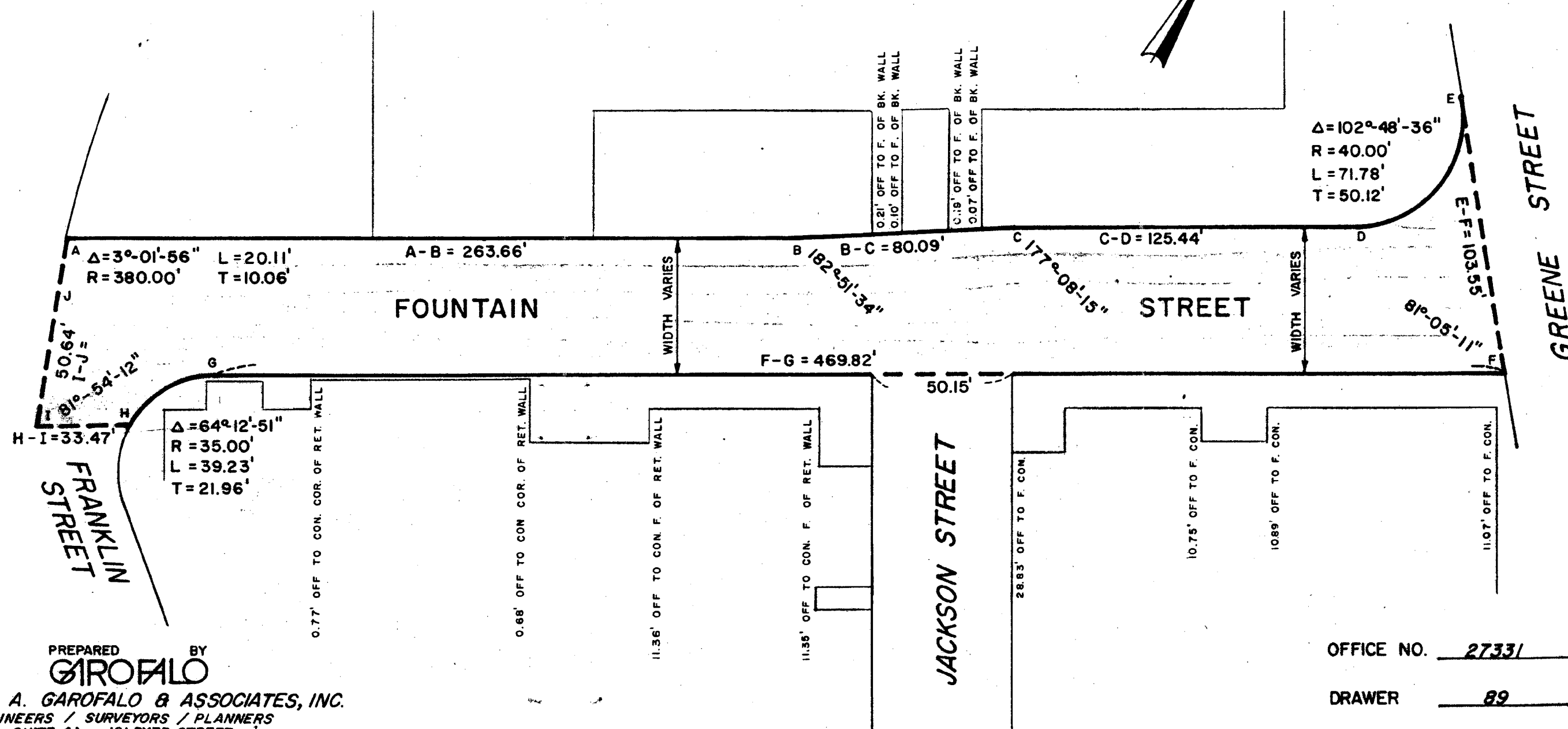
PROVIDENCE R. I.

P. W. DEPT. - ENGINEERING OFFICE

STREET LINE SECTION

Plan No. 064265

Date November 3, 1983



PREPARED BY
GAROFALO

LEONARD A. GAROFALO & ASSOCIATES, INC.
ENGINEERS / SURVEYORS / PLANNERS
SUITE 4A, 101 DYER STREET
PROVIDENCE, R.I. 02903
DATE: JANUARY 5, 1981

OFFICE NO. 27331

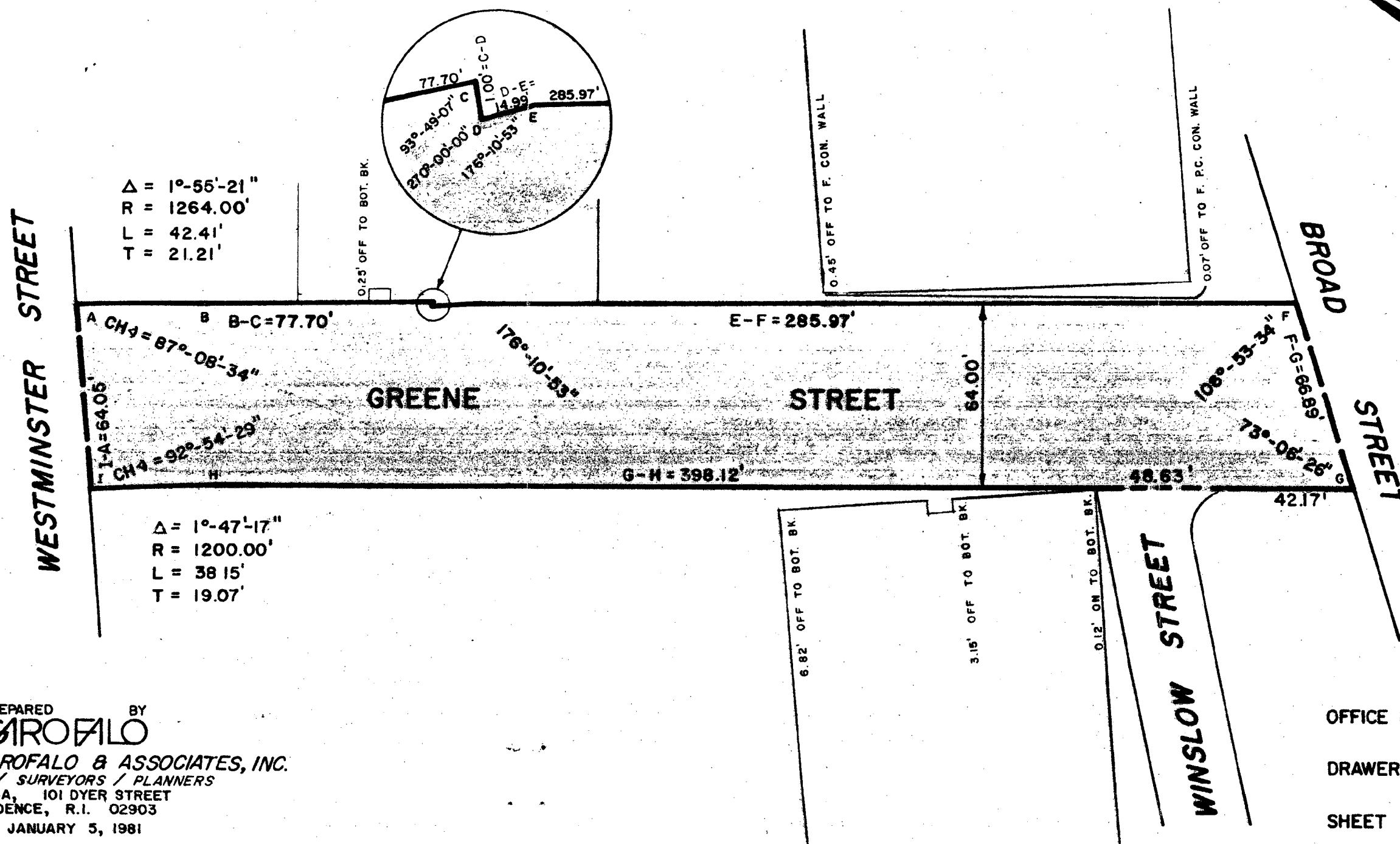
DRAWER 89

SHEET B-28

SHADED AREA DEEDED FOR
HIGHWAY PURPOSES. THIS
PLAN SUPERSEDES ALL
PREVIOUSLY COMPLETED MAPS.

Scale 1"=40'

PROVIDENCE R. I.
P. W. DEPT. - ENGINEERING OFFICE
STREET LINE SECTION
Plan No. 064266
Date November 3, 1983



PREPARED BY
GAROFALO
LEONARD A. GAROFALO & ASSOCIATES, INC.
ENGINEERS / SURVEYORS / PLANNERS
SUITE 4A, 101 DYER STREET
PROVIDENCE, R.I. 02903
DATE: JANUARY 5, 1981

OFFICE NO. 27332

DRAWER 89

SHEET B-29

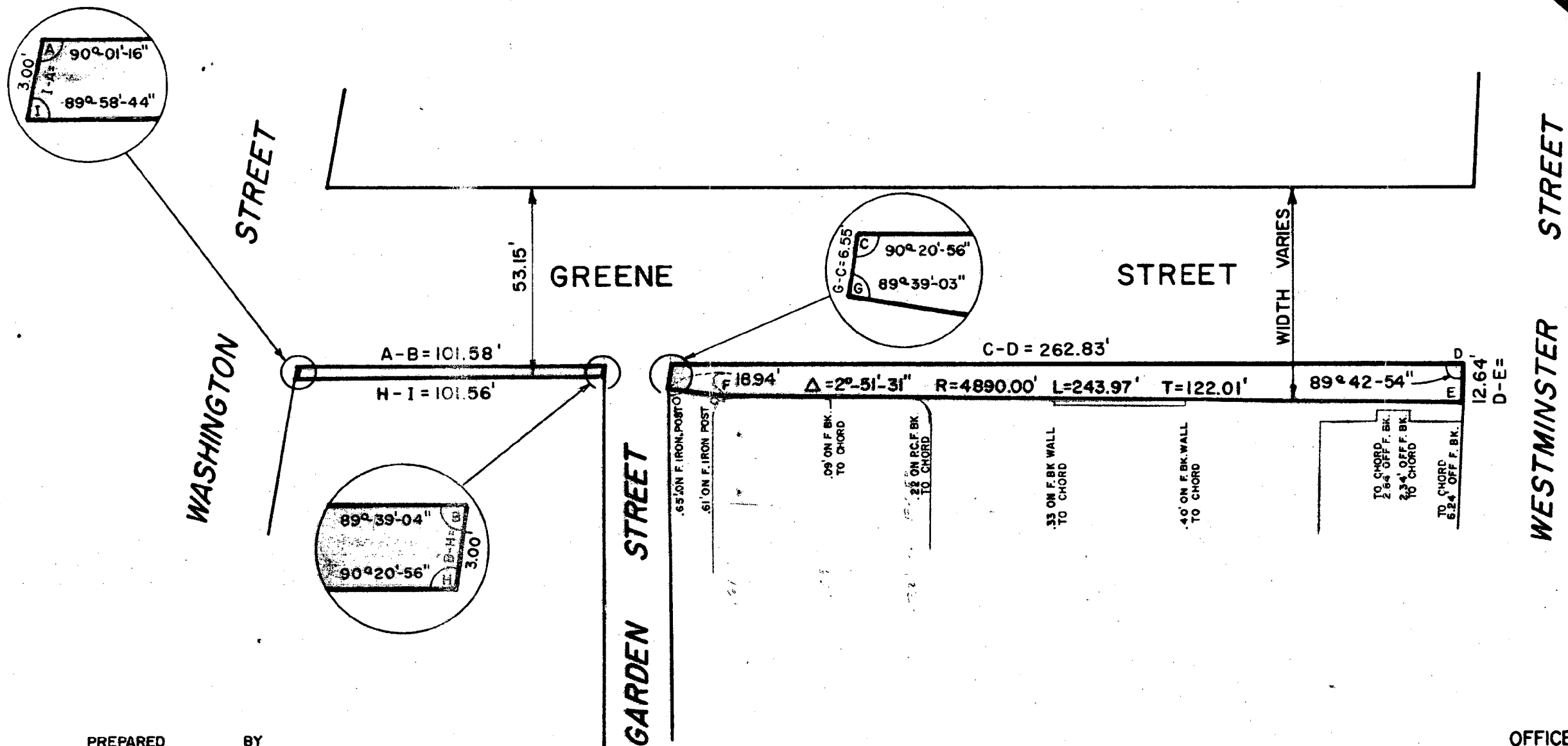
NOTE:
SHADED AREA DEEDED FOR
HIGHWAY PURPOSES. THIS
PLAN SUPERSEDES ALL
PREVIOUSLY COMPLETED MAPS.

PLAT OF
GREENE STREET
Widening

From Washington Street To Westminster Street

Scale 1"=40'

PROVIDENCE, R. I.
P. W. DEPT. - ENGINEERING OFFICE
STREET LINE SECTION
Plan No. 064267
Date November 3, 1983



PREPARED BY
GAROFALO
LEONARD A. GAROFALO & ASSOCIATES, INC.
ENGINEERS / SURVEYORS / PLANNERS
SUITE 4A, 101 DYER STREET
PROVIDENCE, R.I. 02903
DATE: JANUARY 5, 1981
REVISED: NOV. 1981

OFFICE NO. 27333
DRAWER 89
SHEET B-30

NOTE:

SHADED AREA DEEDED FOR
HIGHWAY PURPOSES. THIS
PLAN SUPERSEDES ALL
PREVIOUSLY COMPLETED MAPS

PLAT OF

GREENE STREET

From Broadway To Fountain Street

Scale 1"=40'

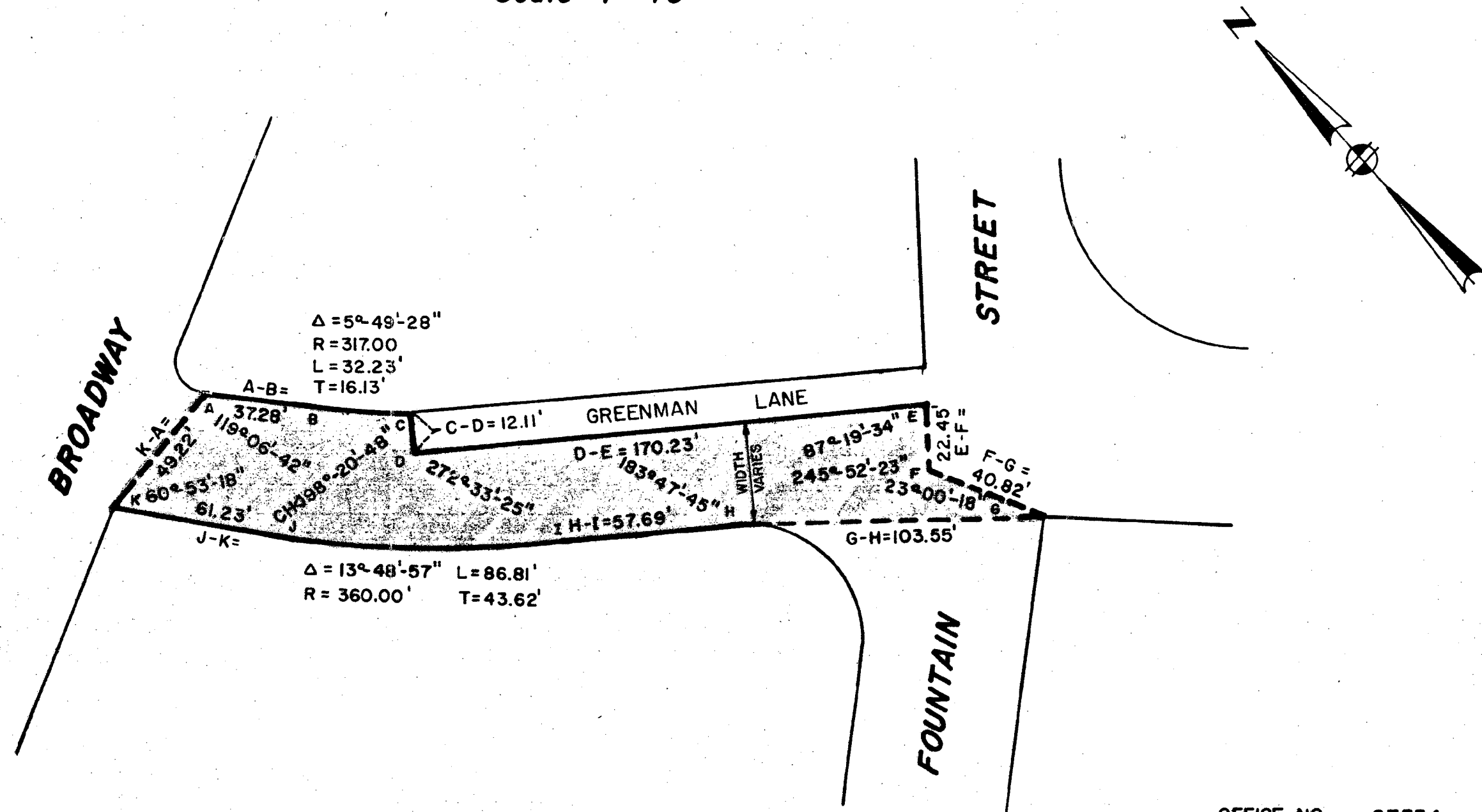
PROVIDENCE R. I.

P. W. DEPT. - ENGINEERING OFFICE

STREET LINE SECTION

Plan No. 064268

Date November 3, 1983



PREPARED BY
GAROFALO

LEONARD A. GAROFALO & ASSOCIATES, INC.

ENGINEERS / SURVEYORS / PLANNERS

SUITE 4A, 101 DYER STREET

PROVIDENCE, R.I. 02903

DATE: JANUARY 5, 1981

REVISED: NOV. 1981

OFFICE NO. 27334

DRAWER 89

SHEET B-31

NOTE:
SHADED AREA DEEDED FOR
HIGHWAY PURPOSES. THIS
PLAN SUPERSEDES ALL
PREVIOUSLY COMPLETED MAPS.

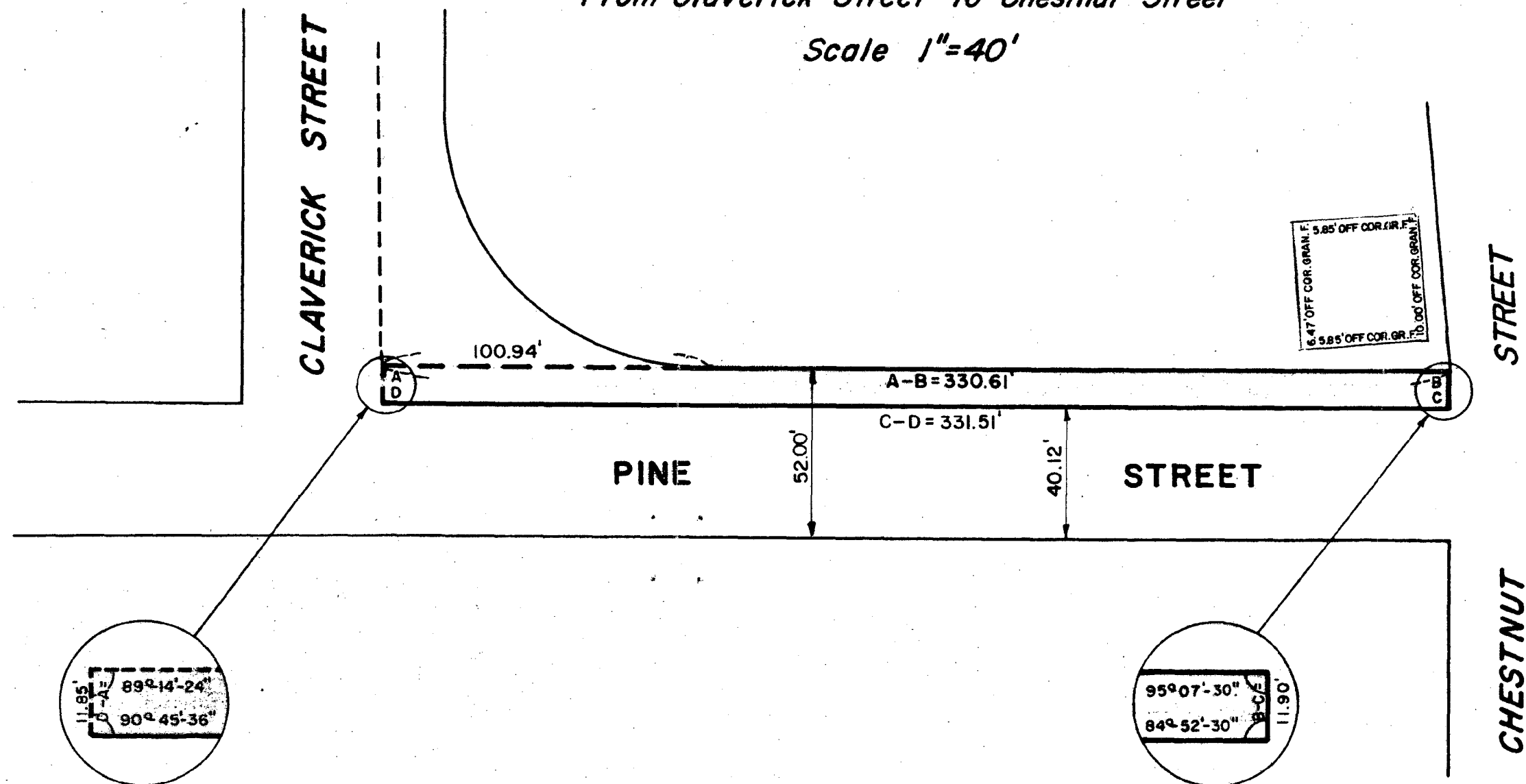
PLAT OF
PINE STREET

Widening

From Claverick Street To Chestnut Street

Scale 1"=40'

PROVIDENCE R. I.
W. DEPT. ENGINEERING OFFICE
STREET LINE SECTION
Plan No. 064270
Date November 3, 1983



PREPARED BY
GAROFALO
LEONARD A. GAROFALO & ASSOCIATES, INC.
ENGINEERS / SURVEYORS / PLANNERS
SUITE 4A, 101 DYER STREET
PROVIDENCE, R.I. 02903
DATE: JANUARY 5, 1981

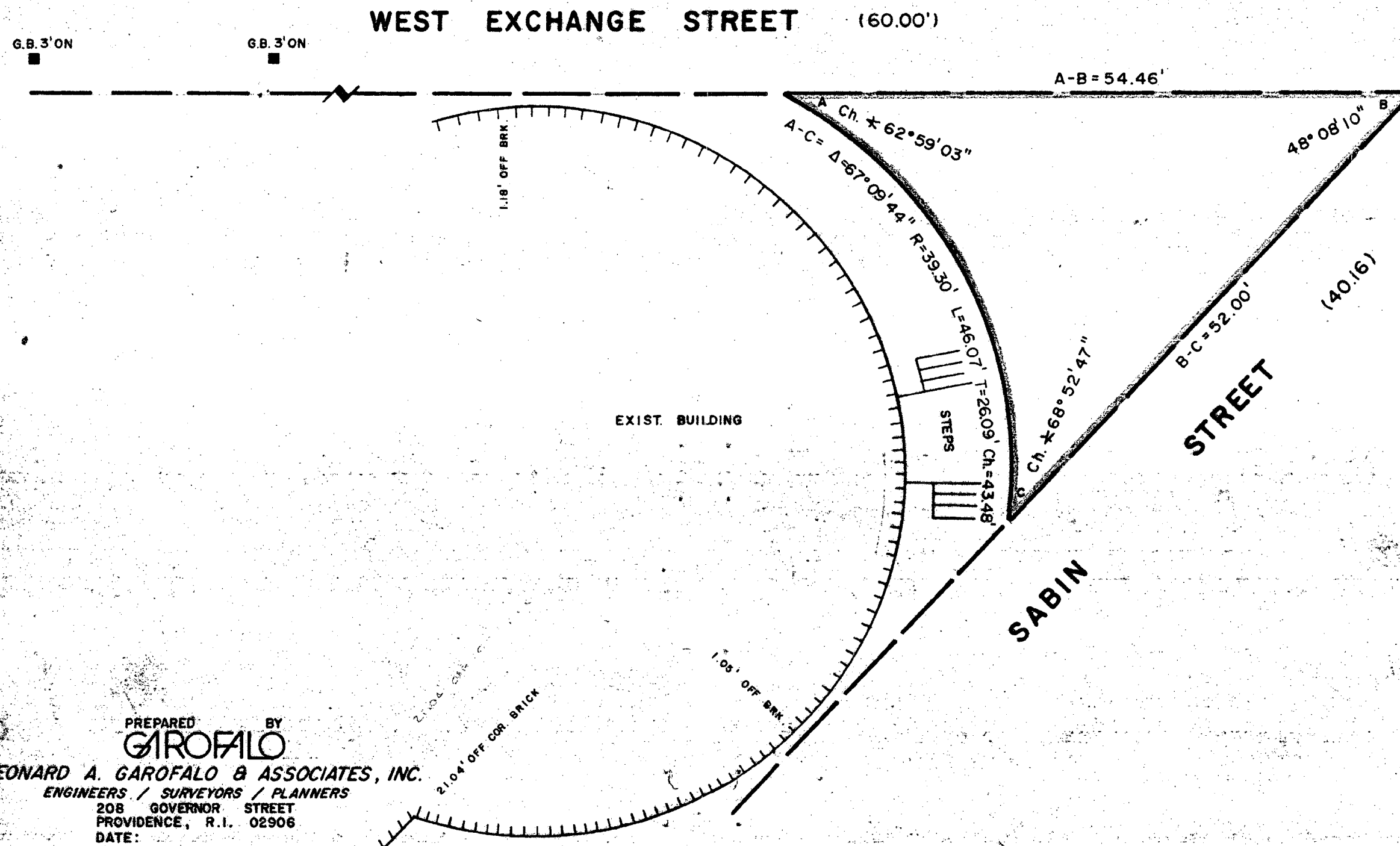
OFFICE NO. 27336
DRAWER 89
SHEET B-33

NOTE:
SHADED AREA DEEDED FOR
HIGHWAY PURPOSES THIS
PLAN SUPERSEDES ALL
PREVIOUSLY COMPLETED MAPS.

PLAT OF
**WEST EXCHANGE STREET AT
SABIN STREET**

Scale: 1"=10'

PROVIDENCE, R.I.
ENGINEERING OFFICE
STREET LINE SECTION
Plan No. **064273**
Date **November 3, 1983**



PREPARED BY
GAROFALO
LEONARD A. GAROFALO & ASSOCIATES, INC.
ENGINEERS / SURVEYORS / PLANNERS
208 GOVERNOR STREET
PROVIDENCE, R.I. 02906
DATE:

OFFICE NO. **27339**
DRAWER **89**
SHEET **B-36**

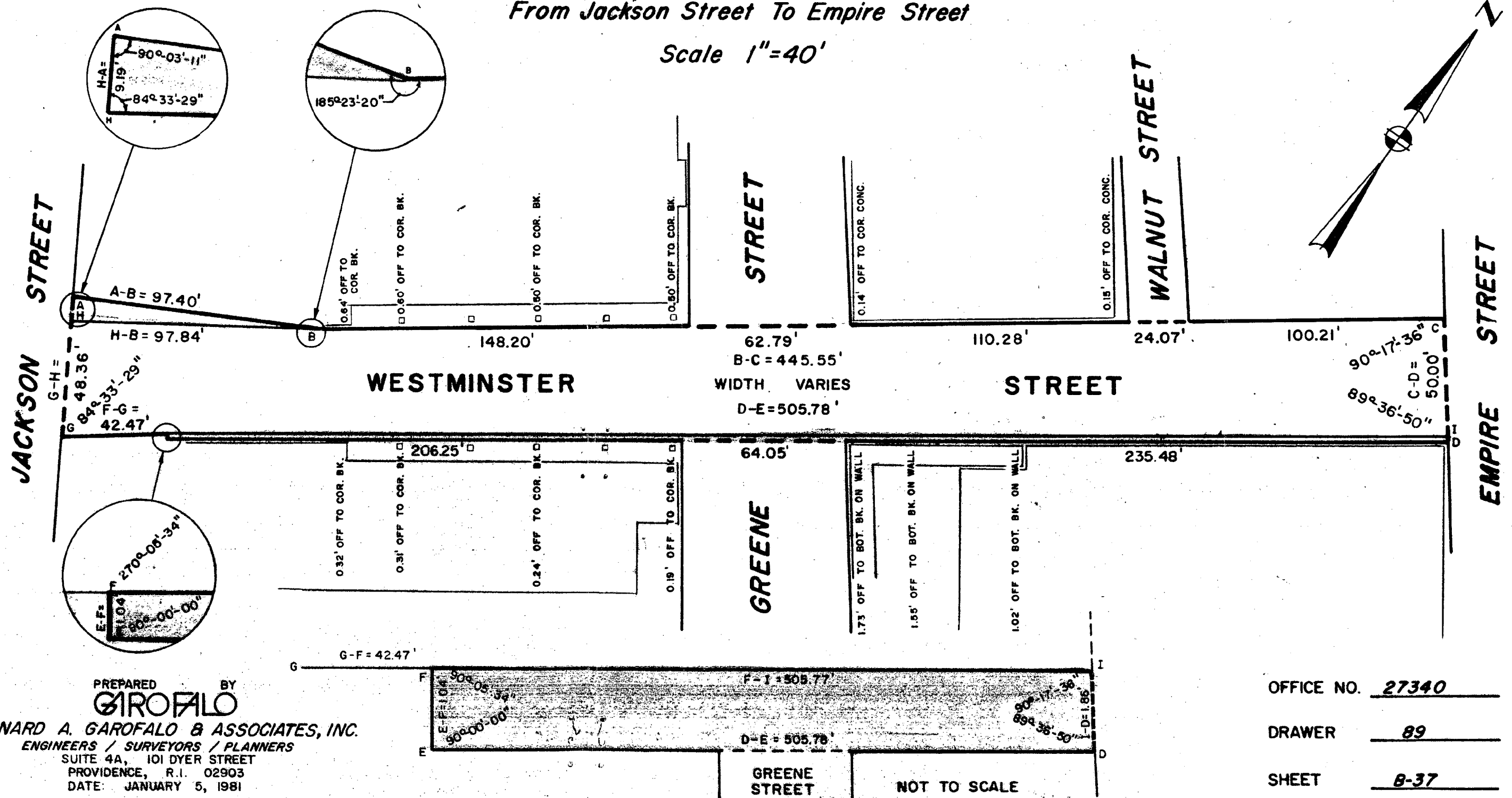
NOTE:
 SHADED AREA DEEDED FOR
 WALKWAY PURPOSES. THIS
 PLAN SUPERSEDES ALL
 PREVIOUSLY COMPLETED MAPS

PLAT OF WESTMINSTER STREET

Widening - Public Walkway
 D-E-F-I-D
 From Jackson Street To Empire Street

Scale 1"=40'

PROVIDENCE, R. I.
 P. W. DEPT. - ENGINEERING OFFICE
 STREET LINE SECTION
 Plan No. 064274
 Date November 3, 1983



PREPARED BY
GAROFALO
 LEONARD A. GAROFALO & ASSOCIATES, INC.
 ENGINEERS / SURVEYORS / PLANNERS
 SUITE 4A, 101 DYER STREET
 PROVIDENCE, R.I. 02903
 DATE: JANUARY 5, 1981

OFFICE NO. 27340
 DRAWER 89
 SHEET B-37

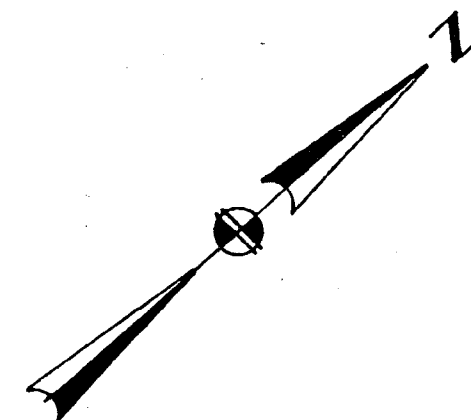
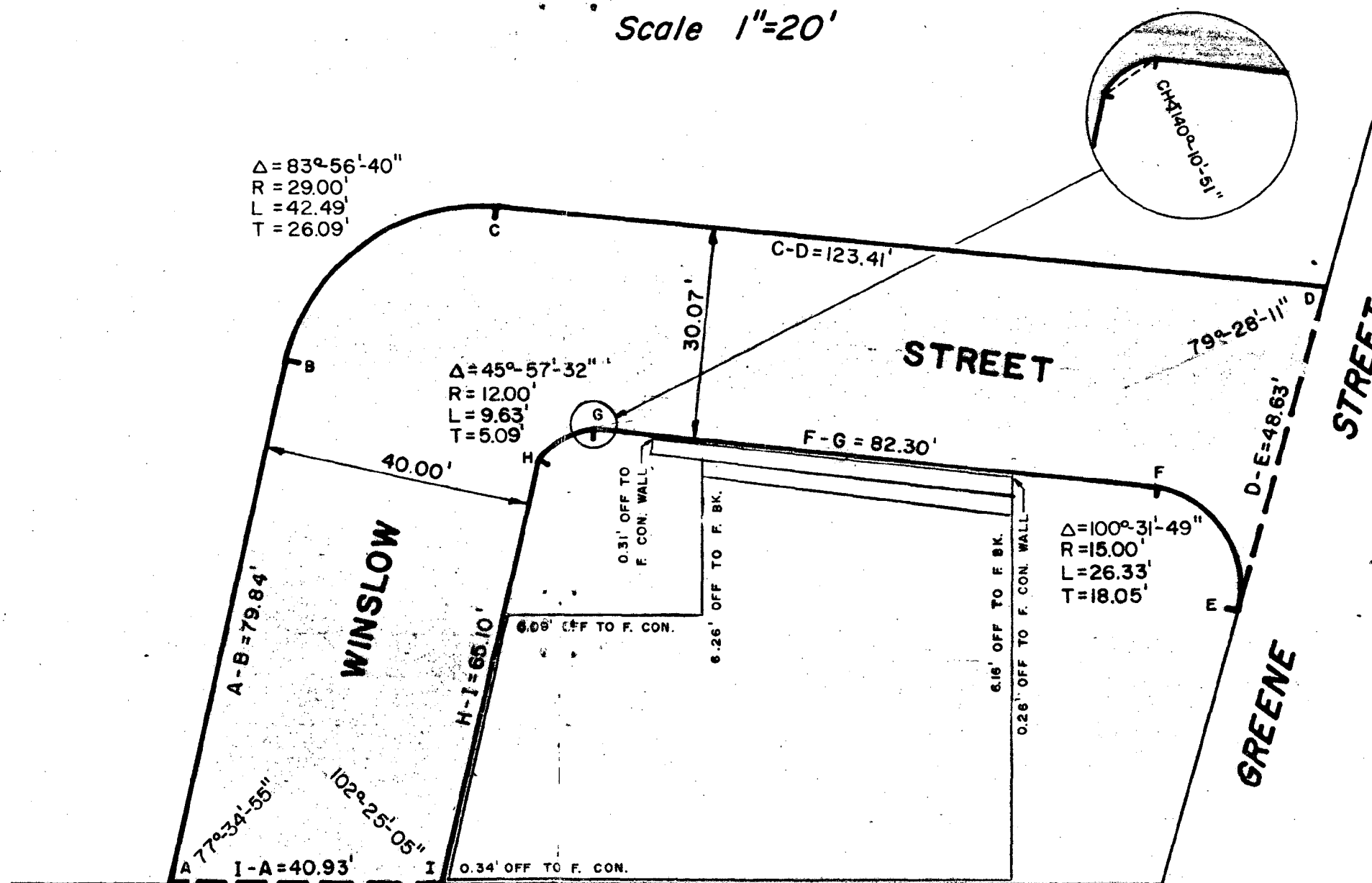
NOTE:
SHADED AREA DEEDED FOR
HIGHWAY PURPOSES. THIS
PLAN SUPERSEDES ALL
PREVIOUSLY COMPLETED MAPS.

PLAT OF
WINSLOW STREET

From Broad Street To Greene Street

Scale 1"=20'

PROVIDENCE R. I.
P. W. DEPT. - ENGINEERING OFFICE
STREET LINE SECTION
Plan No. 064275
Date November 3, 1983



PREPARED BY
GAROFALO
LEONARD A. GAROFALO & ASSOCIATES, INC.
ENGINEERS / SURVEYORS / PLANNERS
SUITE 4A, 101 DYER STREET
PROVIDENCE, R.I. 02903
DATE: JANUARY 5, 1981

BROAD STREET

OFFICE NO. 27341

DRAWER 89

SHEET B-38