



# 1266

Westmins

664

J Frank Read

JH.

Permit No 1759

Opened Sept. 27 1876

Closed Sept. 30 1876

Cut at curb 9.8

Reopened Sept-24-95

Closed  
" 2.8.11.95

H. M. Goldrick D. L.

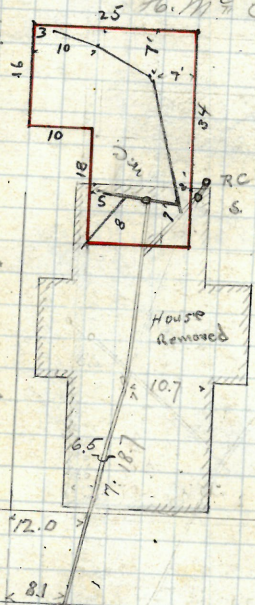
Respond Dec 19

Closed " 24

M. Cullen

Received Apr. 23/91, by B. B. Brady

Drain lowered and retied with  
5" iron pipe x location of trap  
changed - Sept. 28-95. C.H.C.



54.0 west of 2nd. N.H. west of  
Hammond

High St.



City of Providence

Drinking Trough Cor.

Cor. Carpenter &amp; Fountain

Laid by S. Horace Wheeler

Permit No. 1761

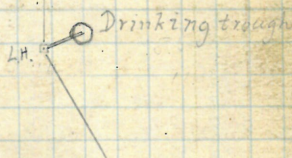
Opened Sept. 28 1876

Closed Sept. 28 1876

Plotted &amp;

Vinton St.

Carpenter St.



Fountain St.

A.

HP

8-57 1/2 - 3-5 1/2 16 18 1/2 28 1/2 39

H.C. Burgess  
469 Pine St.  
Los. Thornton  
D.S.

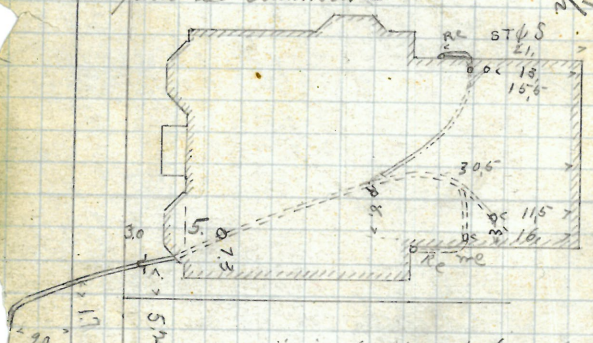
Permit No. 1762 B

Opened Oct. 2d. 1876  
Closed Oct. 5th 1876

Reopened Aug 27 - 1880  
Closed " 27 - 1880 Cut at curb 6.5  
by Asa K. Lilly set

Reopened & closed Apr 14 - 1906  
W.H. Chadney D.S. - Cleanout -  
Reopened & closed Apr 3 - 1920 -  
H.S. Hayes D.S. - Cleanout -  
Reopened Dec. 17 - 1920 -  
Closed " 17 - 1920 -  
H. Hayes D.S. - Cleanout

Reopened - 2/10/42  
Closed - 2/13/42  
a. Rebuilt and  
impro.



Originally the whole of this work was  
not plotted & on the 27 - Aug - 1880  
Asa K. Lilly took an extension to  
fix the drain as my attention was called  
to the note book & discovered it not  
plotted. I took a few measurements  
& dotted in the drain as near as  
could guess. R.B.H.

Reo 7/7/53  
Clo 7/8/53  
P. MANGIONE

open street to Relay  
Somerset St.

11.0



5 1/2 7 43 +26 5

GONE

Heirs of R. Sanders  
287-291 High St.  
J. Frank Read

285-289 Westminster St. J.L.  
Permit No 1764

May 7-1889 ~~Open~~ Opened Oct. 2nd. 1876  
Closed Oct 7th 1876

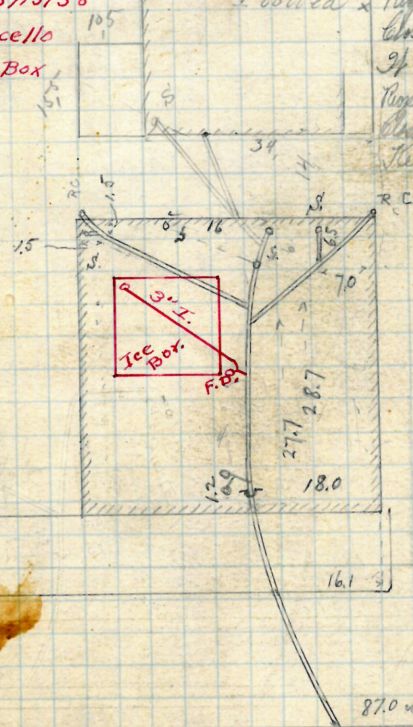
Reopened Apr. 1893 Cut at curb 7.7  
Secd Apr. 1893 H. R. Shadsey F  
Reopened 8/15/58 F.D.L.

Closed 8/15/58

L.J. Marcello

Add Ice Box

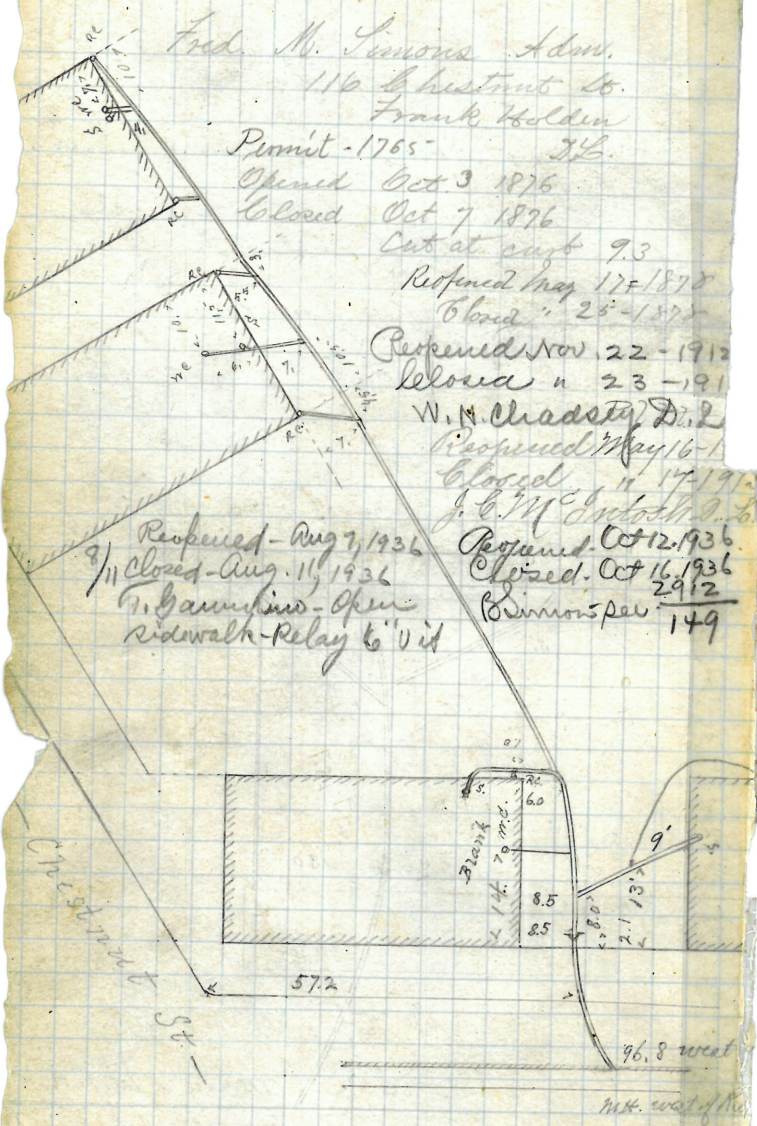
Plotted x Reopened July 15, 1909  
Closed July 16, 1909  
34 Beach St.  
Reopened Dec 1, 1930  
Closed " " "  
Beach St.



87.0 west of 1st M.R.

west of Summer St

— High St. — changed to  
Westminster St



Fred. M. Simmons Adm.  
116 Chestnut St.  
Frank Holden

Permit - 1765 - J.B.

Opened Oct 3 1876

Closed Oct 7 1876

Cut at curb 9.3

Reopened May 17 1878

Closed " 25 - 1878

Reopened Nov 22 - 1912

Closed " 23 - 1912

W. M. Chadsey Dis.

Reopened May 16 - 1912

Closed " 17 - 1912

J. E. W. Smith Dis.

Reopened Oct 12 1936

Closed Oct 16 1936

Simmons per 2912

149

Reopened - Aug 7, 1936

9/11 Closed - Aug. 11, 1936

N. Gammon - Open

Sidewalk - Relay to 'U' it

Chestnut St.

E. 12th St.

Reopened: 6/3/54  
Closed: 6/3/54 6/3/54  
N. Robbins add 1/54

see inspectors return



REMOVED

7

James M. Clarke

S. W. cor 2-8 Cranston & 5 Winter Sts.

John O'Donnell  
J.L.

Permit No. 1768

Opened Oct. 4, 1876

Closed Oct. 12, 1876

and July 12, 1933

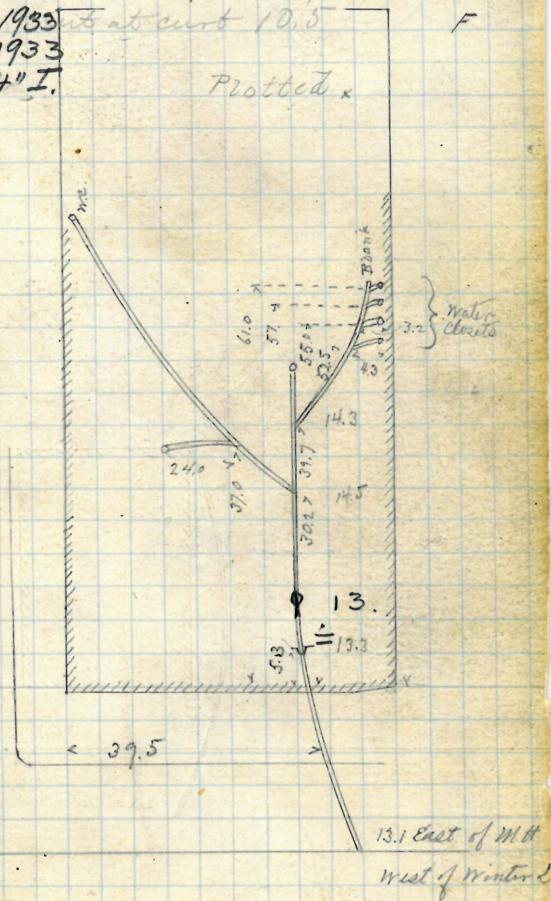
and July 12, 1933

Recess (add 4" I.)

at curb 10.5

Plotted x

— Winter St. —



— Cranston St. —

Harris &amp; Flanders

170 Carpenter st.

Permit No. 1770

Opened! Oct. 6th 1876

Closed Oct 7th 1876

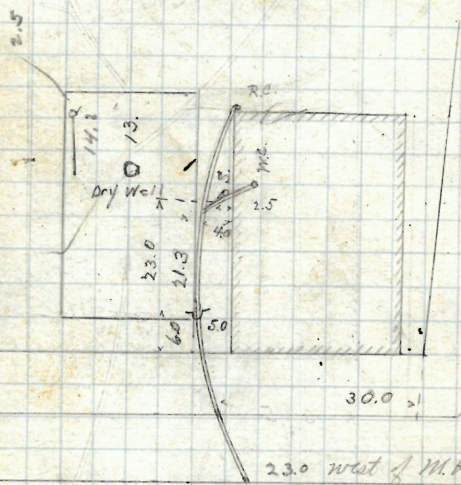
Cut at curb 9.9

Repaired June 4/28  
Cloud " " 28

Closed 11:28

A. C. Robinson D.H.

Plotted. x



23.0 west of M.H. at Grant St

Grant St

Carpenter St. —





Robert E. Judley  
482 426 Edley St.  
Frank Holden  
J.L.

Permit 1771

Opened Oct. 9th 1876

Closed Oct 12th 1876

Cut at curb 7.3

Reshined Nov 15, 94

Closed Nov. 15<sup>th</sup> 94

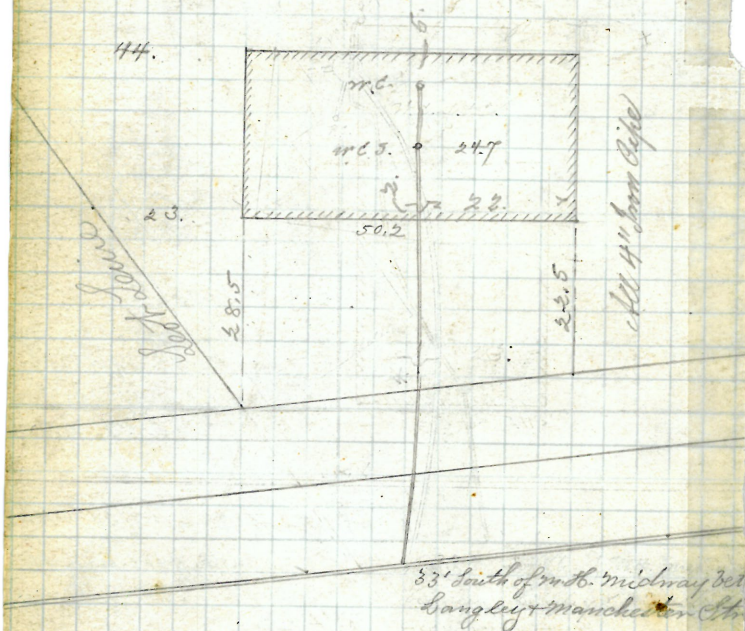
J. F. Read D. L.

Received Dec. 15-1919

Closed " 16-1919

H. S. Lewis D. D. -

Plotted



Eddy St.



REMOVED

*H. M. H. King*

1-225 ~~572-575~~ Broad St. Inter. Cor. Summer St.

*John O'Donnell*

*S.L.*

Permit 1772

Opened Oct. 10th 1876

Closed Oct. 12th 1876

Cut at curb 10.4

Reference Sept 1-2 - 1879 F

closed " 3- - 1879

opened - Feb 15, 1934

closed - Feb 15, 1934

U. Lyons - Char. - sewer trap

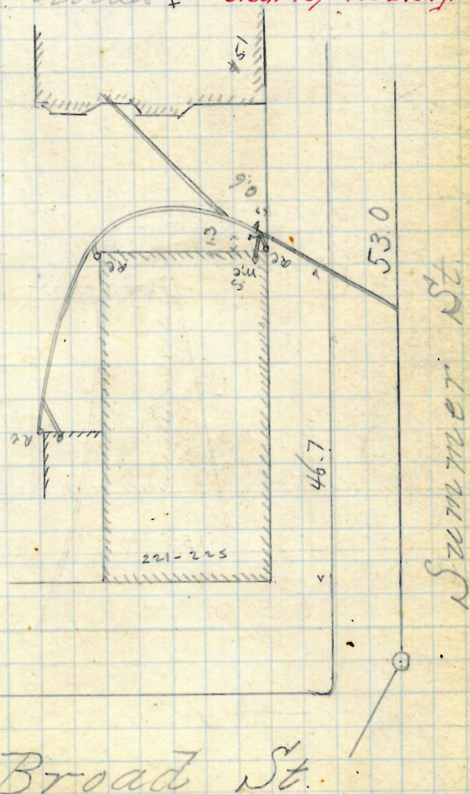
Blocked \*

Reopened 7/17/58

closed 7/18/58

D.L.T.A. Gammino

Clear replace 2 lengths



John King  
36 Pearl St.  
Fred P. Durfee  
S.L.

Permit 1774

Opened Oct 12th 1874  
Closed Oct. 17 1876

Reopened & closed May 31 98. Cut at cut 10.0

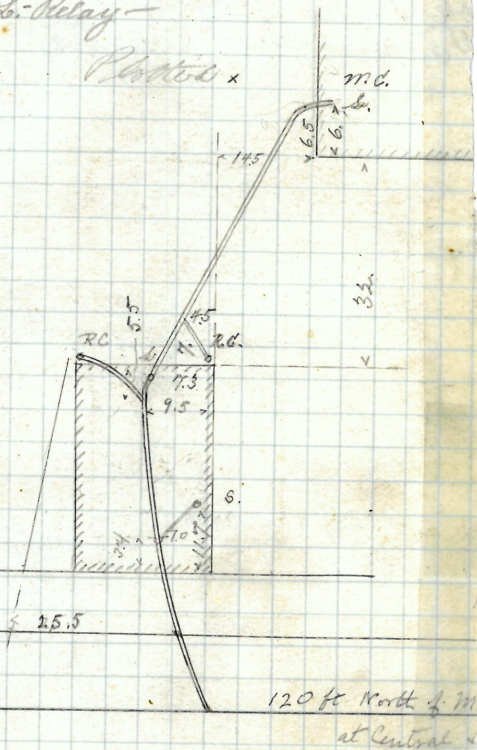
H. J. Hogg J. L.

Reopened Sept. 6-1905

Closed " 7-1905

W. N. Chodsey S.L. - Relay -

Plotted x



— Pearl St. —



13  
REMOVED

John King  
42 Pearl St  
Fred P. Surfer  
D.L.

Permit 1775

Opened Oct. 18 1976

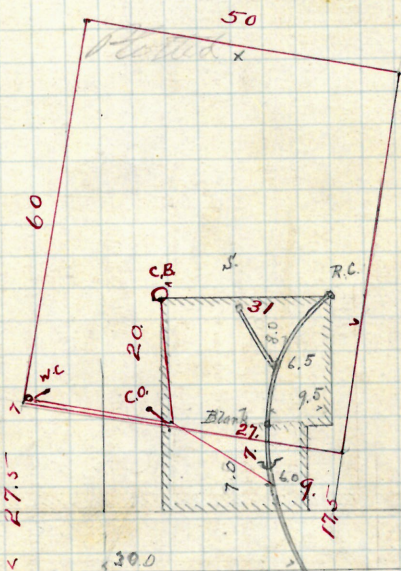
Closed Oct 23d

Cut at curb 9.5

- apr 22 1947 4/19/47

apr 25 1947

by J. Gammie P.L.



Pearl St

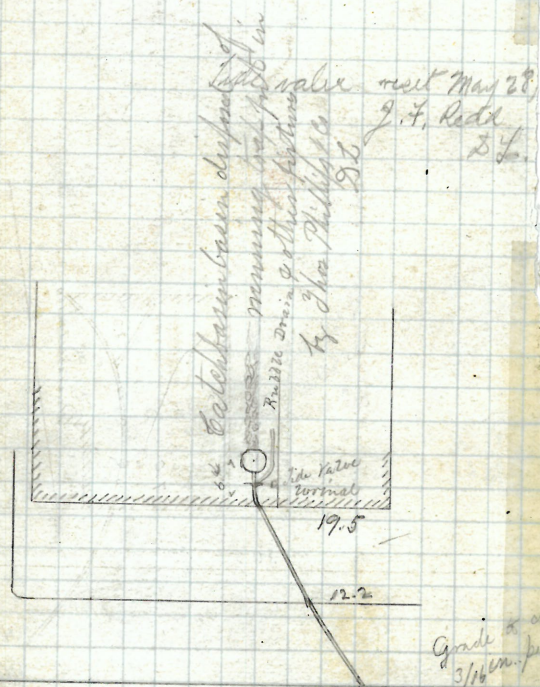
# 14

GONE

Eliza + Made  
125 - 131 Westminster  
J. Frank Read  
J. L.

Permit 1773

Opened Oct. 12th 1876  
Closed Oct. 20th 1876  
Cut at curb 7.4  
Reopened May 2 - 1882  
Close " 4 - 1882  
Plotted +



Westminster St.

84.6 west of M. St.  
Arcade



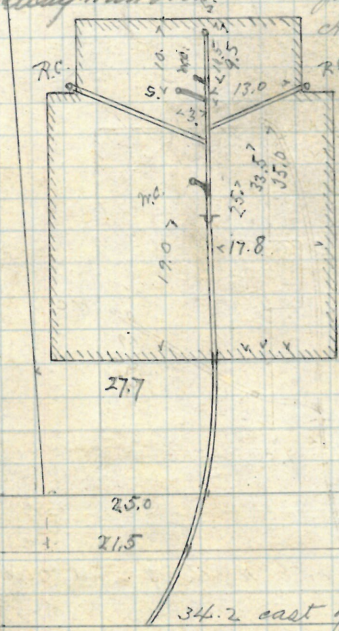
Wm. M. Bailey Trustee  
College St. James S. S. S.  
J. L.

Commit No 1777

Opened Oct 12<sup>th</sup> 1876  
Closed Oct 20<sup>th</sup>

Cost at curb 10.0  
opened & closed May 24-1902  
P. Doyle D. S. - Donkunder  
Combit 101 193 130 174 19 51  
opened Apr. 16-1917  
closed " 1917  
W. Hamigletts D. S.  
Larger Relay with Iron -

Reopened Sept. 13-1920  
closed " 14-1920  
J. L. Williams D. S.  
All above -



— College St. —

A. Harkness  
7 Cooke St.

Mm. Andrews + Low

Permit No. 1776

But at Comb &

Opened Oct. 13th 1876

Closed Oct 2 last

Reopened Dec 1 - 1886 by Tho

Reopened Nov 14, 1893

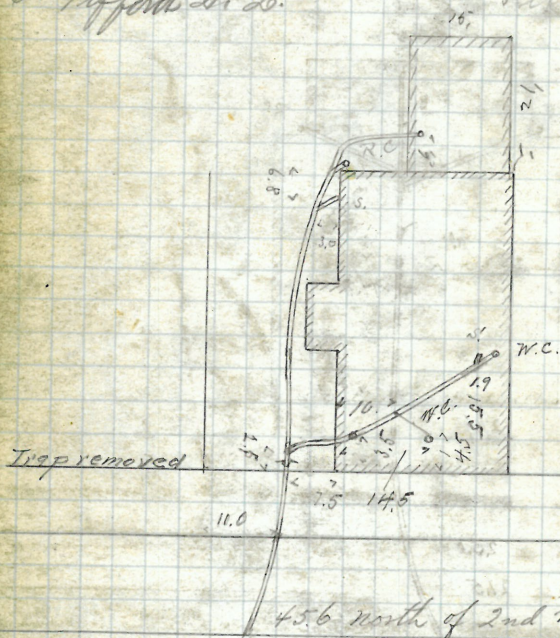
Closed Nov. 14 1893 by T. Phillips  
(C. Leabrook) D. L.

(Clean but) D/L

Refused Nov. 3-1966 Reo. 12/21/65 Closed 12/21/65

Closed 4-19-66 D.L.F. Ricci (Removed Trap)

E. Gifford D. L.



45.6 north of 2nd Mt. north

Power 40

—Cooke St.—



P. - 157  
19

27.

Leopold Diamond  
55-58 Transit St.  
d. W. Zipp  
S. G.

Transit No. 1778

opened Oct. 13th 1876

Closed Oct. 17th 1876

at club 9.11 Redford Oct. 10 - 1879

6 closed 11 - 1879 F

opened - June 1. 1933

red. - June 5, 1933

Dickens - ad

opened June 21, 1933

red. - June 21, 1933

new MR Redford



Transit St

18.

Thomas Bagrove

2131  
SW. Cor. Richmond & Leppicane

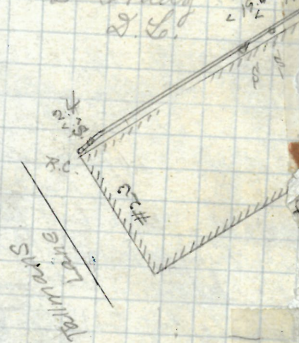
James Brady  
S. L.

Permit No 1779

Opened Oct. 13, 1876.

Closed Nov. 13, 1876.

Cut at curb 10.0



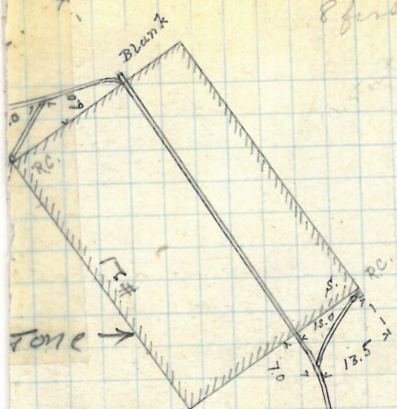
Plotted

Following Line

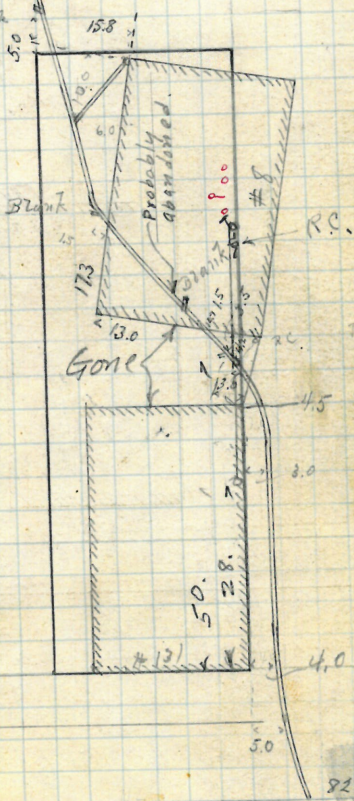




#8  
Ashcroft



Captured - Apr. 13 1943  
 Released July 14 1943 Blaine  
 H. W. Gibson  
 Free Wilds.  
 = opened 12/4/56  
 'osed 12/4/56  
 L. J. Langley add toilet.



Richmond St.

82.5 south  
of mt. south of Shipley

Edward L. Burrows  
38 Somerset St.  
Oliver C. Moulton  
JL

Permit 1781

Reopened Dec. 27, 1898

Closed Jan. 3, 1898

H. W. Goldrick, D.L.

Relaid with 6" Iron Pipe

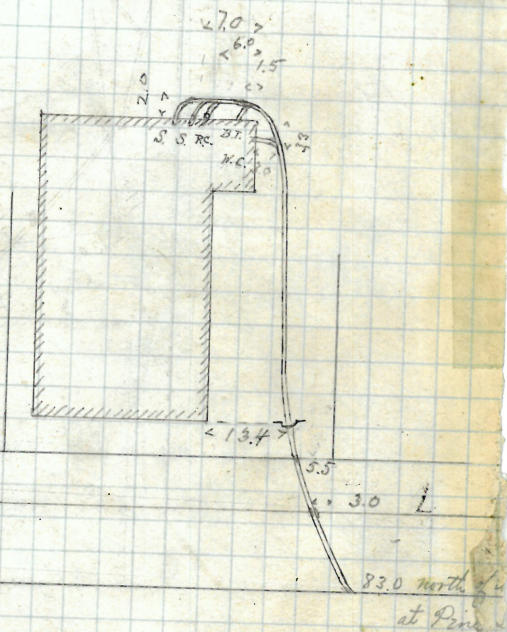
Opened Oct. 16th 1898

Closed Oct. 21st 1898

Cut at end 10.0

F

Plotted x



— Somerset St. —



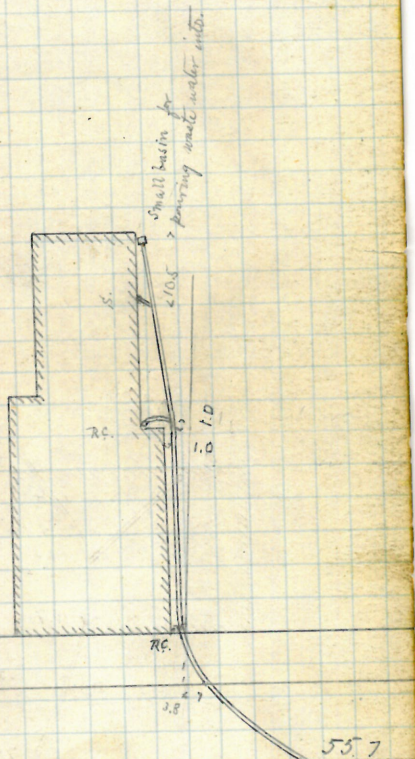
Stephen P. Richardson  
 46 Sheldon St.  
 Wm. T. Brown  
 J.L.

Permit 1780

Opened Oct. 16<sup>th</sup> 1876  
 Closed Oct 19<sup>th</sup> 1876  
 Cut at cut 10.1

F

Plotted x



Sheldon St.

west of 3d. with  
 west of Brook St.

P - 157  
19

Mary L. Smith  
53. Transit St.  
Stet. W. bridge  
S. L.

Permit 1782

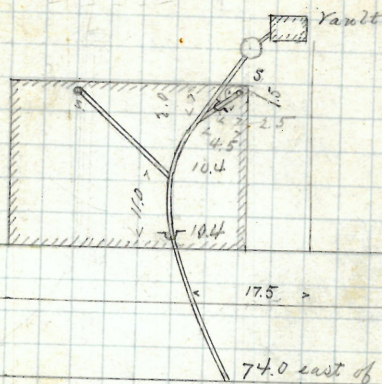
Opened Oct 16

Finished Oct 17

Cut at curb 9.5

F

Plotted x



Transit St.



George B. Horton 110? John  
155? Williams St. from  
Hell M. Tripp  
JL

Permit 1783

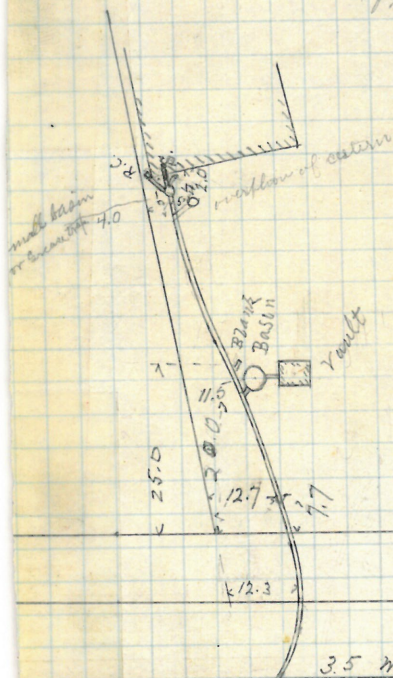
Opened Oct. 18<sup>th</sup> 1876

Closed Oct. 21 1876 cut at curb 8.5

opened Nov. 17, 1893

and Nov. 18, 1893 by T. H. Read E. L.

Plotted x



Williams St.

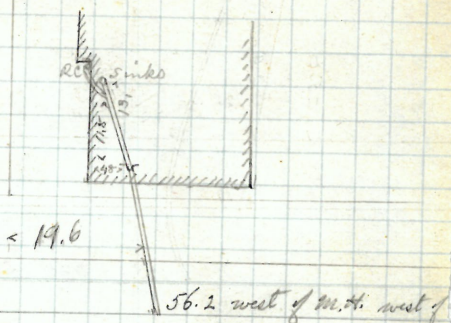
24

Allen Chase  
69 Ship St.  
J. O'Donnell  
J.L.

Permit 1787  
Opened Oct. 23<sup>d</sup> 1876  
Closed " 24 - 1876  
Cut at curb 9.5

Turned June 9/30  
Closed " 18  
M. O'Donnell  
Suck Drain

Wetted x



Ship St.



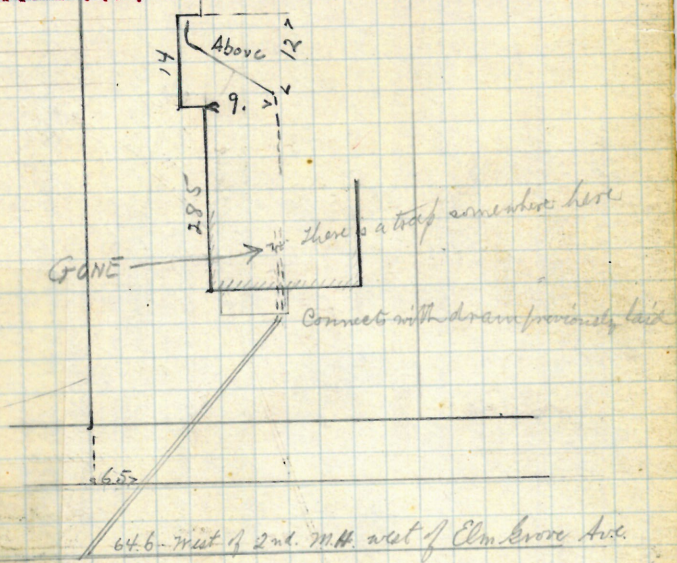
Mark H. Heath  
429 187 Angell St.  
Abel W. Lipp  
S.L.

Permit No 1788  
Opened Oct. 23d. 1876  
Closed " 29 - 1876  
Cut at curb 9.5

Oct 24 1949 10/ Reopened 5-1-68  
Oct 24 1949 10/ Closed 5-1-68  
with W.C. + sink 1/49 Clear Remains of A. Dubois  
in Klein Pl. P202202x

PENED 2/4/77  
CLOSED 2/4/77  
L. A. RICCI ①

NEEDED REPLACE 2 LENGTHS OF 6 V.C.



— Angell St —

Anna B. Russell

266 Pine St.

Oliver C. Moulton

JL

Permit 1786

Cut at curb 9

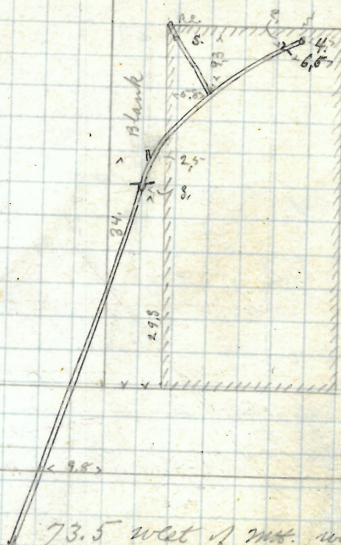
Opened Oct. 23d 1876

Closed " 27 - 1876

For 94. Work done under  
this Permit April 20-1877  
See Okla. 561 & 16. 33-

70

Plotted x



73.5 west of mt. west

Claverick St.

— Pine St. —



Heirs of Mrs. Fletcher  
 S. E. cor Fulton & Eddy Sts.  
 John B Bradley  
 J. B.

Permit 1802

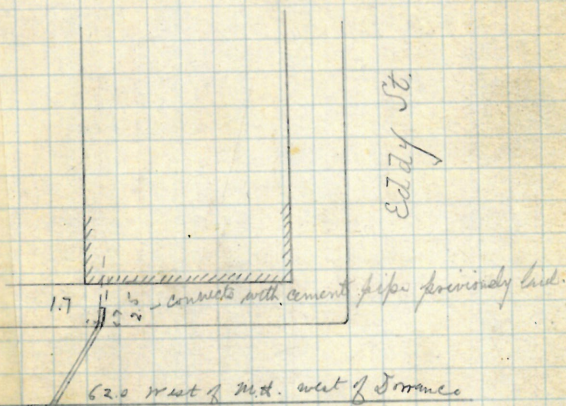
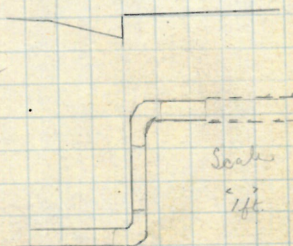
Cut at curb 6.6

Opened Nov. 2d 1876

Closed Nov 4th 1876

F

Plotted x

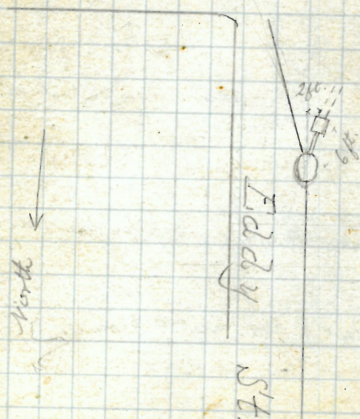
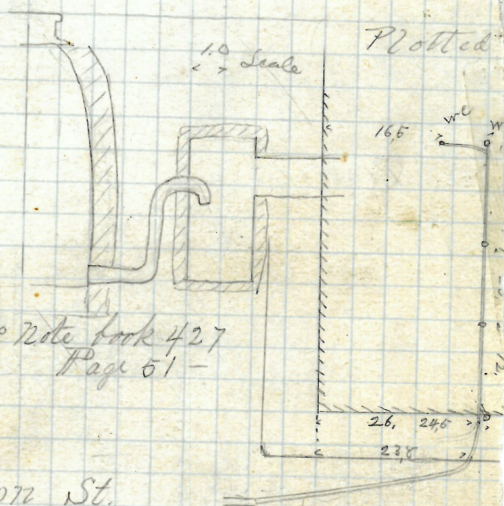


— Fulton St. —

J. H. Bengarty & others  
 Cor Eddy to Fulton  
 John C. Bradley

Permits 1803A

Re March 9-1881 Opened Nov. 2nd 1876  
 " 14-1881 Closed Nov. 3d. 1876  
 Reopened June 24 - 1878  
 Closed July 1 - 1880





GONE

27  
38  
38

38

27

Clara H. Penno

312

77 Dudley

Asa K. Belling

J. L.

ermit 1799

Opened Nov. 4th 1876

Closed Nov. 10th 1876

Cut at curb 9.6

Reopened Nov 30-1877 T

Closed " 30-1878

opened - July 27, 1939

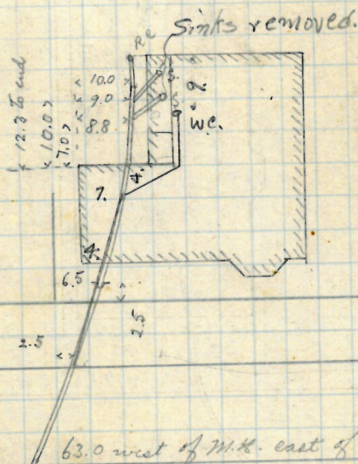
red - July 26, 1939

Deso. Cl. of sidewalk.

is cellar bottom from

ab 5" vit - 4" iron

Pro t t e d x



Dudley St.

GONE JP

C. L. Smith

115 Beacon St.

Frank Road

J.C.

Permit No. 1101

Cut at curb 10.0

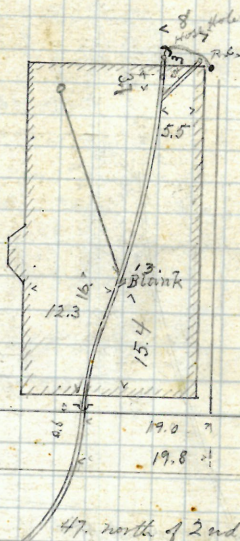
Opened Nov. 2nd 1876

Closed Nov. 4th 1876

Reopened - Oct 24, 1940 Reopened Aug. 7 1876

Closed - Oct. 25, 1940 Closed Aug. 7, 1940

P.Q. Keyes - Relay 4" I. all po + trap J. Gammon



Beacon St. -





A. B. Fennell

22-30 Cranston St

Patrick Clarke

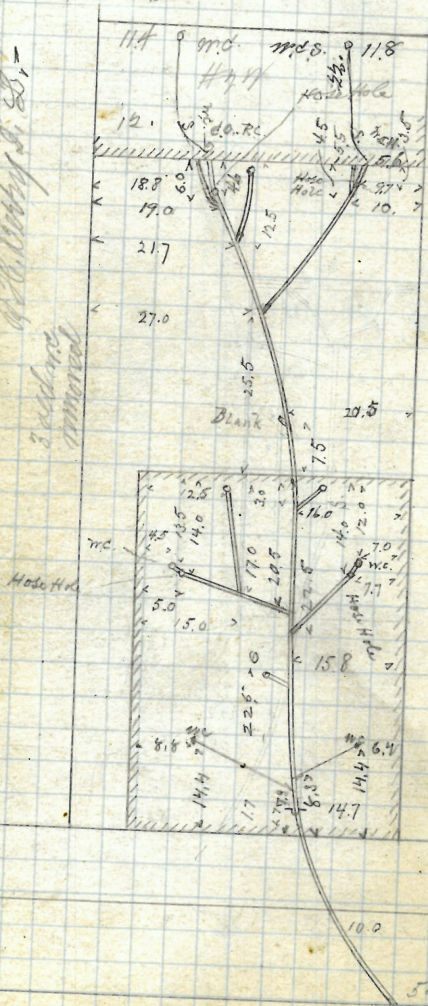
Permit 1804

Opened Nov. 6, 1876

Cloud Nov. 15, 1876

replaced Dec 22/92 Put at curb 10.0  
also

3rd and 4th  
removed  
used July 10-1901  
1902  
1903  
W. C. Worthington, Jr.,



Plotted

Profoundly  
Grieved  
A. H. Beck

55.0 East of 2nd

east of Pearl St.

Cranston St.



P-157  
8

33.

Eliza J. Almy  
75 Prospect St.  
Hws Phillips & Co.  
J.L.

Permit No. 1790

Opened Oct. 18th, 1876

Closed Oct. 25th, 1876

Reo. 10/10/61

Cut at curb 8.5

Closed 10/10/61

D.L. F. Donahue

Remove Trap Clear.

Reopened Aug 30-1923

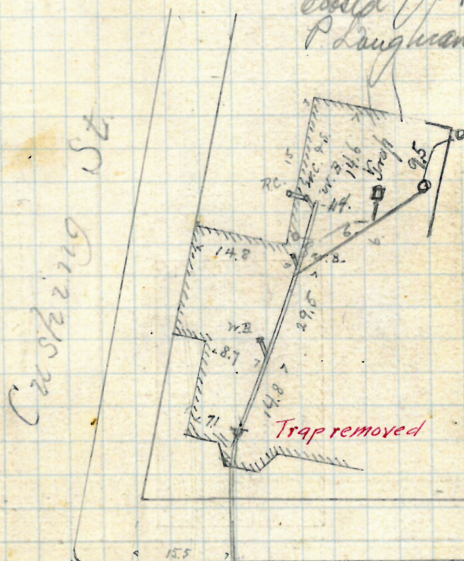
Closed by 55-1923

O. G. Loughran D.L.

Reopened July 17, 1929

Closed July 19, 1929

P. Loughran D.L.



79.4 north of 2nd West. north of  
Meeting St.

— Prospect St. —

34.

# 39

A. I. Carpenter

+7 Maple St.

John W. Briggs  
S.

Permit 1809

Opened Nov. 9th 1876

Closed Nov. 10th 1876

Cut at curb 9.1

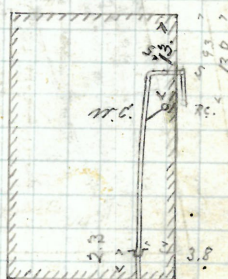
Reopened Jan'y 28-1916

Closed " 31-1916

W. Botman L. Co.

F

Plotted



12.0

82.0 met of water at  
Bottom

— Maple St. —





5228-227

S. N. Cor Richmond & Point

Asa K. Liller

56.

Permit 1810

Obtained: Nov. 13th. 1876.

Closed Nov. 14th 1876

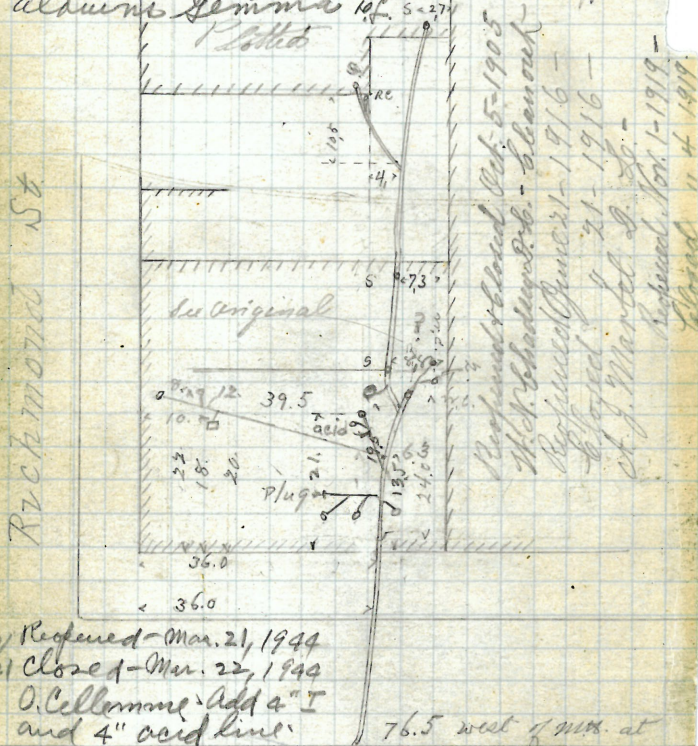
Refined Jan 24 - 1882 Cut at cost 8.0

Blood " 27-1882 by J F Read

Opened + Closed Jan 15 1945, addition of a race

*Aldous Gemma* 10<sup>7</sup> 5-27

12th



3/ Repaired - Mar. 21, 1944

21 Close q - Mar. 22, 1944

O. Cellumme - Add 4" I  
and 4" acid line.

76.5 west of m.s. at

Richmond

— Point St. —

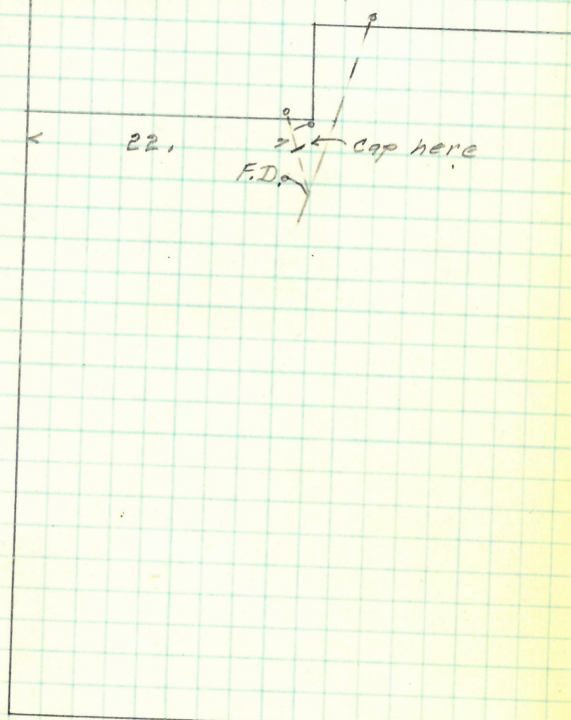


810  
opened 4/21/58  
closed 4/21/58  
V Mancini  
Add [unclear]

John B. Wood  
104 Point St.

36

*Cancelled*



Richmond St.

Point St.

REMOVED

37.

Eliz. E. Corlies  
E. cor. 154 + 156 Elm St. & 40 Plane St.  
John W. Briggs  
D.L.

Permit No. 1811.

Opened Nov. 11th. 1876

Closed Nov. 17th. 1876

Cut at curb P. 56.

and Sept 24-1902

and " 23-1902

Colgrove D. L.

and Sept 13-1905

and " 13-1905

Leary D. L.

and Sept under E. Permit

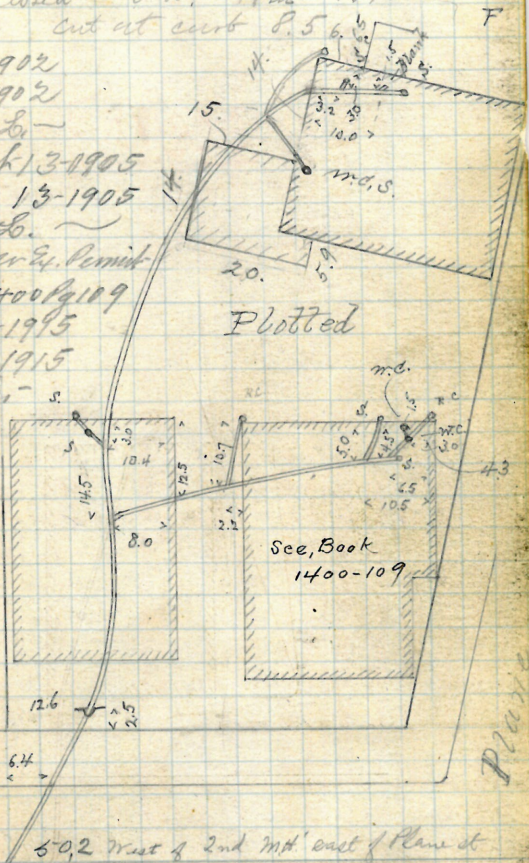
6462 Brs 1400-109

and July 11-1915

and " 1915

Colgrove D. L.

and



— Elm St. —



38

~~REMOVED~~

Sarah C. Fowler

39 Central St.

John O'Donnell

J.S.

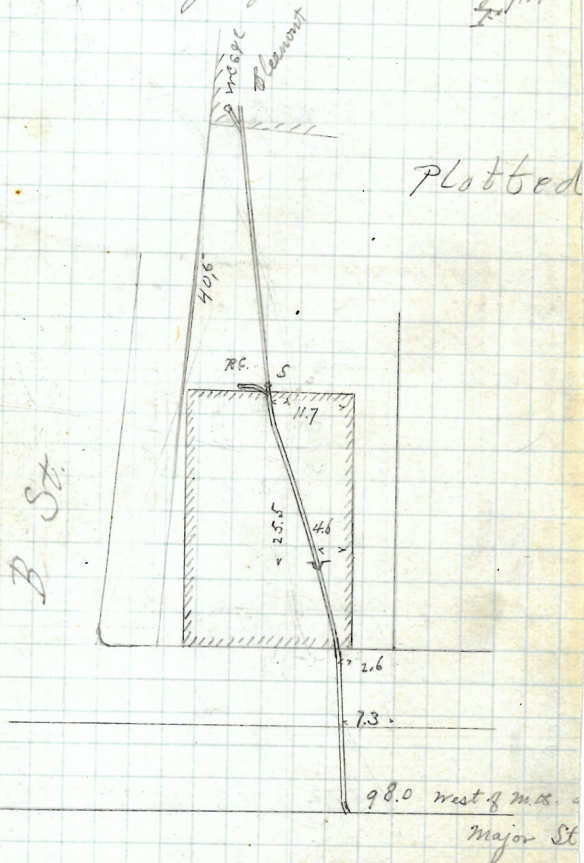
Permit 1812

Cut at curb 10.5'

Opened Nov. 11th. 1876

Closed Nov. 16th 1876

Reopened July 30 - 1886 by J.F.R.



Central St.

346 Pine St.

JL

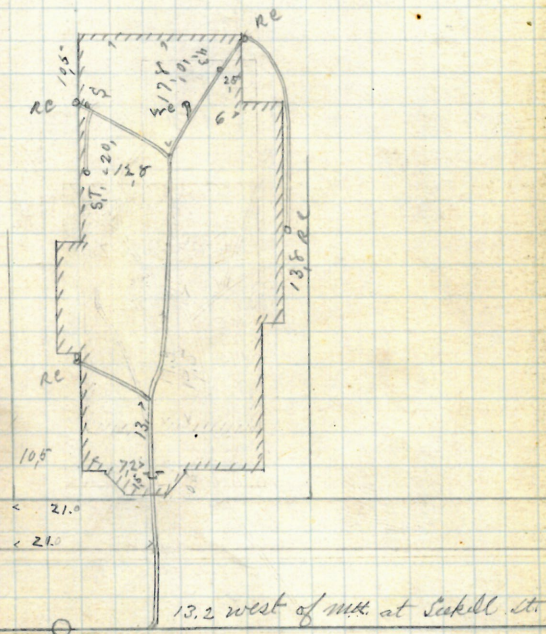
Opened Nov. 14, 1876

Closed Nov. 16, 1876

Cut at curb 9.4

Reopened Dec 11 - 1883 by J. W. Briggs D.L.

Plotted



Pine St.



Wm. Linkham  
#26 Ringgold

#26 Ringgold

John O'Lonnell D.L.

Permit 1815

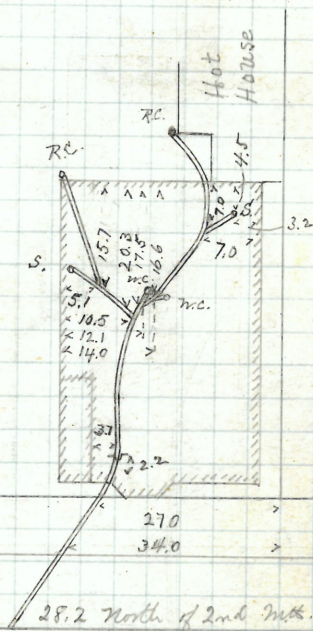
Opened Nov. 16th, 1876

Closed Nov. 21, 1876

Cut at curio 10.5-

7

Plotted



Ringgold St.

41  
**GONE**

Granville Greenleaf

Quoddy game Myrtle & 85? West Clifford St  
Ans H Lilley  
J.L.

Permit 1818

Opened Nov. 27th 1876

Closed Dec. 1

Cut at curb 10.5

Reopened Aug 5, 95. Cleaned out trap

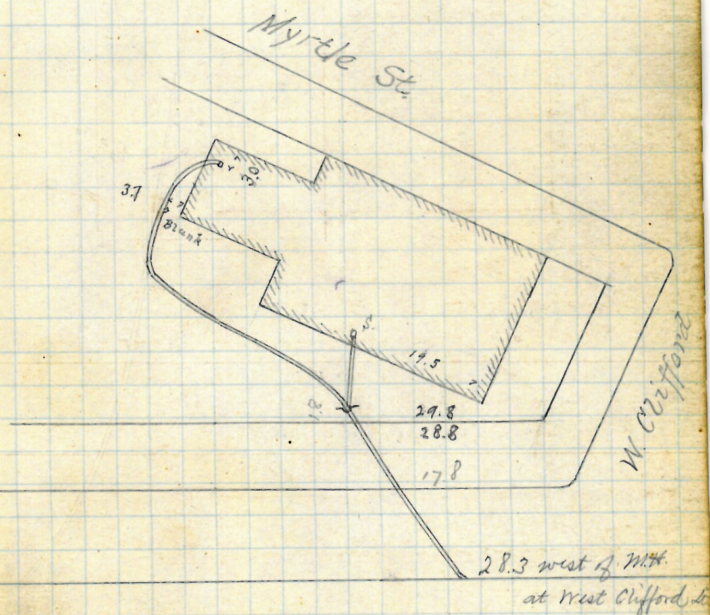
Closed " 5, 95. J. Deary D. L.

Reopened 5/8/58

Closed 5/8/58

D.L.F. Ricci

Remove Trap Clear.



Dudley St.



REMOVED

Mary M. Grant  
659 High St.  
J. A. Blackmar

Permit 1819

Opened Nov. 22, 1876

*Glossa* Nov. 29, 1876

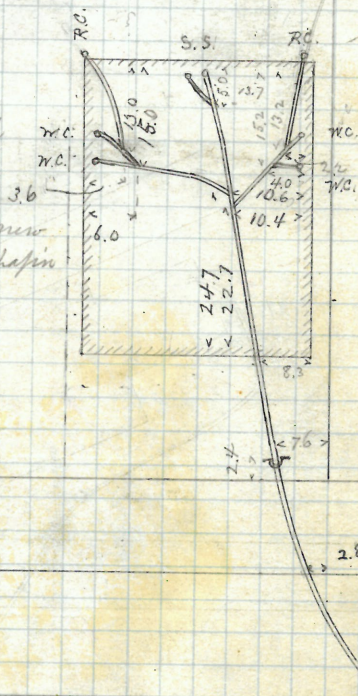
Cut at curb 9.8

Reopened April 28-1882 by O.C. Moulton 2L/F

See Note Book 448 Page 108

Plotter

This house moved away & the drain used to take rain water from new home of M. B. W. Chapin



—High St.—

of mts. &  
Hamm

J. H. Lower

N.E. cor Friendship &amp; Page

John W. Briggs  
D.C.

Permit 1820

Opened Nov 23, 1876

Closed Nov 24, 1876

Cut at curb 5.9

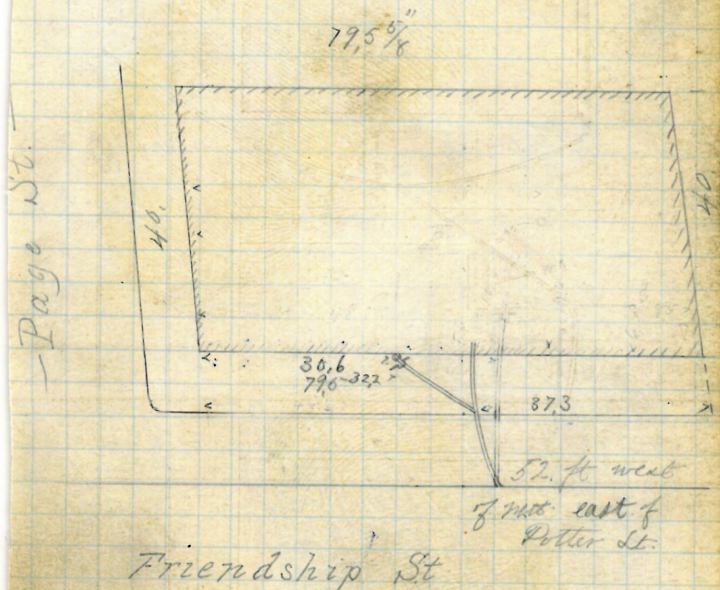
Reopened Jan 9-1880

Closed " 10-1880

Reopened Apr 30-1880  
" March 30-1883 by J. F. Reed

F

Plotted





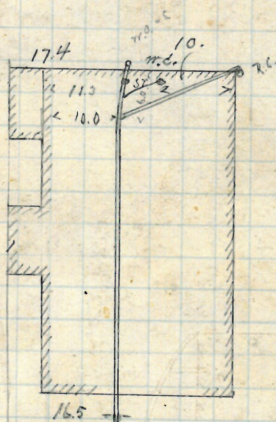


Alfred S Potter  
354 Broad St  
Gaston A Blackmar  
D.L.

Permit 1829

8th Brass Opened Nov. 27 1876  
2 Apr 25-1879 Closed Dec. 2, 1876  
d 1879 Cut at curb 9.3  
opened Feb'y 21, 1898 F  
closed " 28, 1898 Cleanout & Relay with  
the Head & D. 6" Iron Pipe from sewer

J. P. Grimes & Co. —



Plotted

52.4 west of 2nd Mt. west of Lake

— Broad St. —



Mr. H. Iron  
309 475 Richmond St.  
C. C. Moulton  
J. H.

Opened Nov. 23, 1876  
Closed Nov. 25, 1876.

Reserved to Cleanout June 15-1900

W. W. Colgrove & L. S. Cleaveland  
S. Richey

Reopened Nov. 1-19

Closed 11 13-190

C. H. Colgrove D. L.

Reprinted April 22-1

Closed 22-19

E. M<sup>rs</sup> Kenney D.

Plotted



Richmond St.

Lucy R. Marcy  
319 + 321 Pine St.  
Wm. F. French  
J. L.

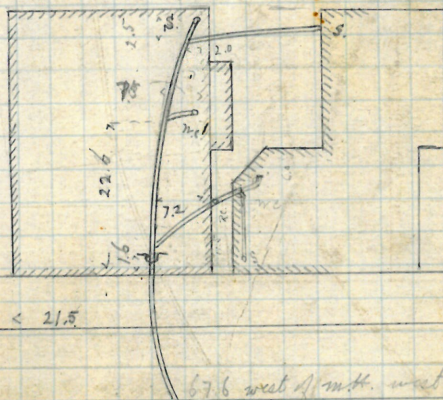
omit 1834

Opened Dec. 5, 1876.

Closed Dec. 9, 1876

But at curb 10,

Extended Nov 27, 1877



— Pine St. —



48

#158

Alexander  
84 Fountain

Permit 1823

Opened Nov 27, 1876

Closed Nov 30 1876

Out at curb 7.7

Reopened April 5-1910-

Closed " 5-1910-

J. Deary D. L. -

Plotted

Reopened March 2-1915

Closed " 9-1915

P. F. Barry D. L. -

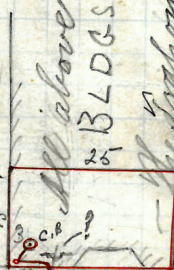
Reopened May 27/38

Closed May 28/38

P. B. Baring D. L.

Add metal Bldg.

Hayden street



16.9 west 16

mit at Hayden St.

Fountain St.

Wagon

3. Aborn St.

Wm. T. Brown

J. L.

Permit 1824

Opened Nov. 23, 1876

Closed Nov. 25, 1876

Cut at curb 7.4

Reopened Oct 21-1905

Closed " 23-1905

R. H. Doyle D. L.

Work done under Ex. Permit No 4194

Plotted

- See Bx 1721 Pg 54 -

Reopened Mch 12-1915

Closed " 12-1915

R. H. Leary D. L.

60.5

Aborn St.

65.3

71.6

80.2. met of M.H. at Hayden St.

Mountain St.



50

28-32 Chalkstone

James Kearney  
28-32 Chalkstone Ave 12 Martin St.

Thomas Newman

J.L.

Permit 1832

Opened Dec. 5, 1876.

Closed Dec. 11, 1876

cut at curb 11.5' below sill

Reopened &amp; closed April 10, 1897

E. B. Blackman D. L.

Reopened &amp; closed Dec. 23-1903

D. W. &amp; Phil D. L.

Reopened May 29, 1934 ± 0.8

Closed May 31

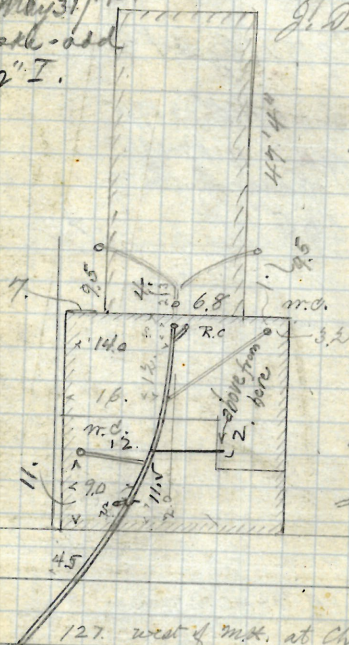
Reopened &amp; closed Apr

J. Deary D. L.

Racelowsk - sed

4" ft - 4.2" I.

Plotted



127' west of m.h. at Charles St.

Martin St  
Chalkstone Ave

**REMOVED**

51

City of Providence  
Police Station Martin St.  
David W. Barney  
3rd

Permit 1833

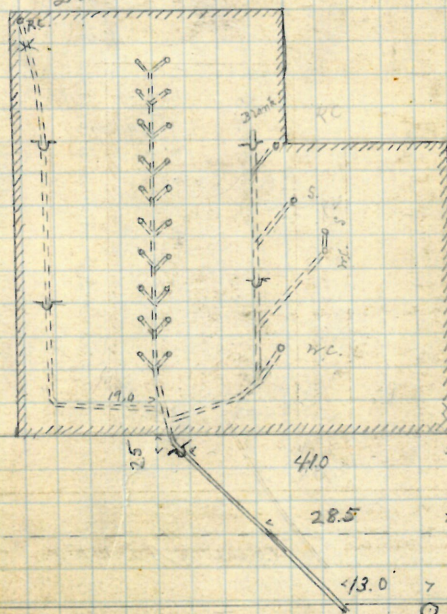
Opened Dec. 4, 1876

Closed Dec. 27, 1876

cut at curb 10.2 below top of rubble  
foundation

Plotted

Disconnected See N.B. 578 P. 159



Martin St.



2  
52

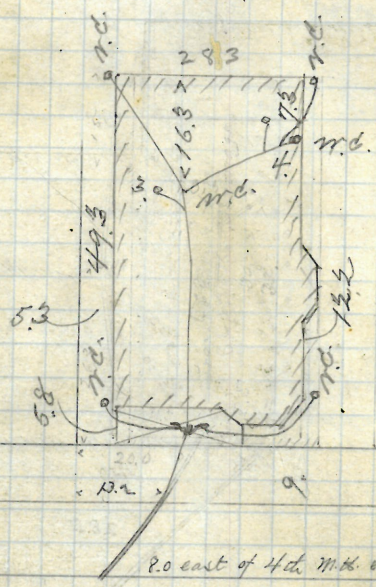
Anna B. Jones & Hope B. Russell  
17 and 19 Arnold St.

Permit 1835 Josiah Simmons J.L.

Opened Dec. 4, 1876  
Closed Dec. 9, 1876  
Cut at curb 9.3

Reopened July 12-1883  
opened July 17/93 Thomas B. Ross J.L.  
closed " 19 " "  
Reopened Dec. 19-1911  
Closed " 22-1911  
Geo. L. Lewis J.L.

Plotted



Arnold St.

N. F. Winslow  
 167. 72 Point St  
 John W. Briggs  
 S. L.

unit 1836

Opened Dec. 4, 1876

closed Dec 7, 1876

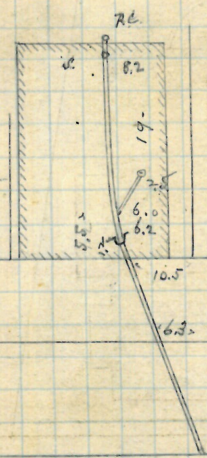
cut at curb 9.0

opened + closed Nov. 5/92.

T. Phillips & Co  
 S. L.

F

Revised



70.2 west of mo west  
 of Hospital St.

Point St.



Stillman Perkins  
692 Bligh St  
# 1326 Westminster St. Col. Thornton  
S.H.

Opened Dec. 5, 1876.  
Closed Dec. 18, 1876.  
Cut at curb 9.3

Reopened May 2  
Closed May 30  
C. R. Blackman  
Reopened Sept. 3  
Closed " 30  
J. A. Blackman  
Reopened Sept 16, 1902  
Closed " 19  
W. Lyons & Co

Dexter St.

Reopened - Oct 4, 1933  
Closed - Oct 4, 1933  
P.A. Pays - <sup>Book</sup> Clear

Plotted  $\frac{157}{5}$

Gone

47.3

High St.  
Westminster St.  
851 West of MH at Courtland St





56<sup>N</sup>

Asa Pike to Amos B. J. Robertson  
721 + 737 High St.  
James P. Willard  
S.S.

Permit 1837

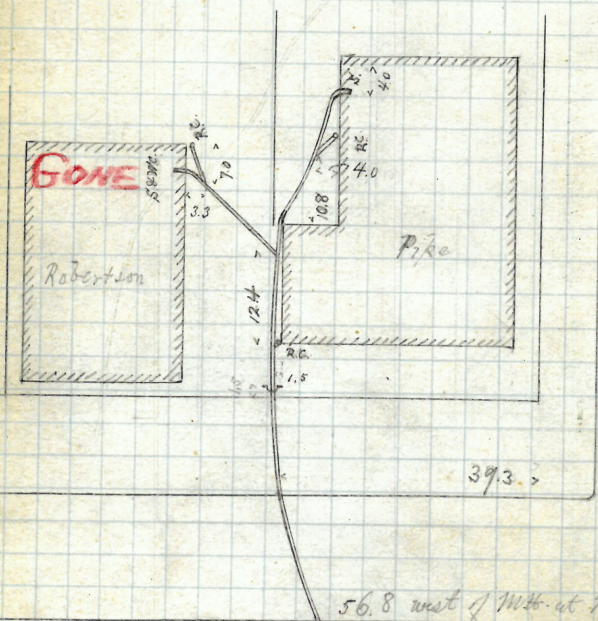
Opened Dec. 6th 1876

Closed Dec. 16

cut at curb 9.4

F

Plotted



High St.

J. G. Johnson  
N.W. cor Peck + Pine sts.  
John Kough  
J.G.

Permit 1845

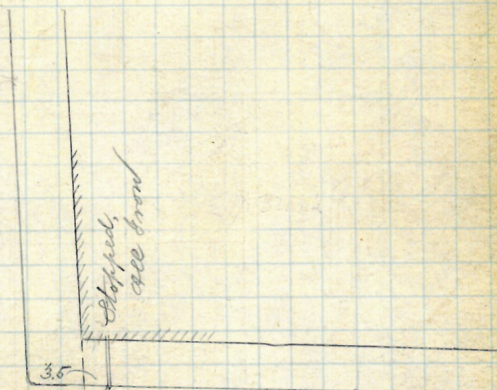
Opened Dec. 20, 1876

Closed Dec. 21, 1876

opened Dec. 4, 1896, Cut at curb 5.0  
closed " 7, 1896 H. R. Chadsey D. L.

Plotted

Pine St.



35.3 North of W. at Pine St.

Peck St.



Isaac Ham Sep-92.

REMOVED GONE

Bernard O. Churchill

120 Plane St.

John Keogh  
D.L.

Permit 1839-1842

cut at curb 10.7 - 50.3

Opened Dec. 7, 1876

Closed Dec. 15, 1876

Reopened & closed July 7<sup>th</sup> 98

J. G. Lyons D. D.

Reopened Feb. 26, 1931

Reopened + Closed July 25, 1929

Closed Mar. 2. 1931

H. Bannan D. L. Clemons

J. Gammar St

Received Mar. 16, 1931

Closed

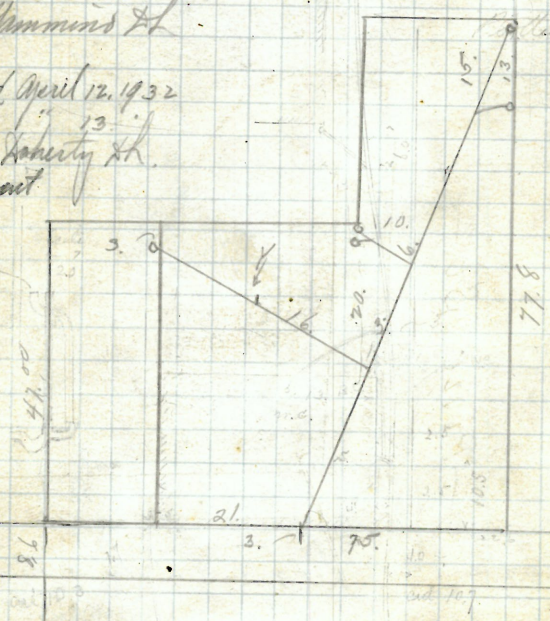
J. A. Gammon's F.L.

Received April 12, 1932

closed

2/3 R. Robertsy SK.

Clean out



90.0 north of  
north of Good

— Plain St. —

59

Frederick and Nelson G. Baker

#30-32 Ringgold St. SW cor Kenyon

John O'Donnell  
D. L.

Permit 1840

Cut at curb 10.3

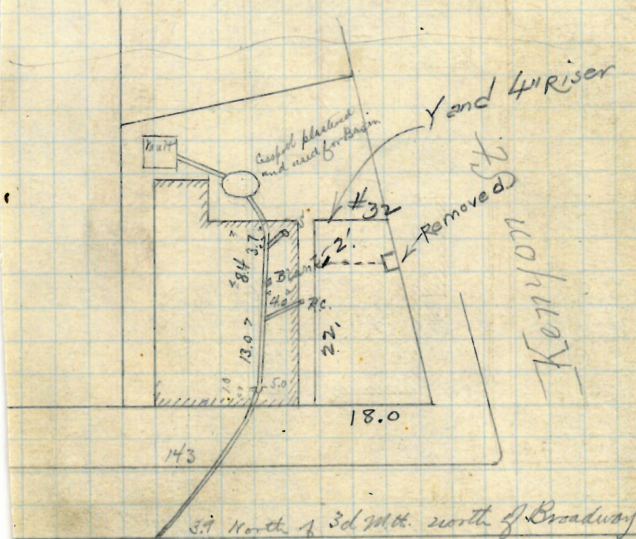
Opened Dec. 6, 1876

Closed Dec. 9, 1876

Reopened Feb 23. 1935

Plotted. Closed - Feb 23. 1935

A. Girardi-add



— Ringgold St. —



60 ✓

Emeline B. Horton

#28 Ringgold St

John O'Donnell

D.B.

Permit 1841

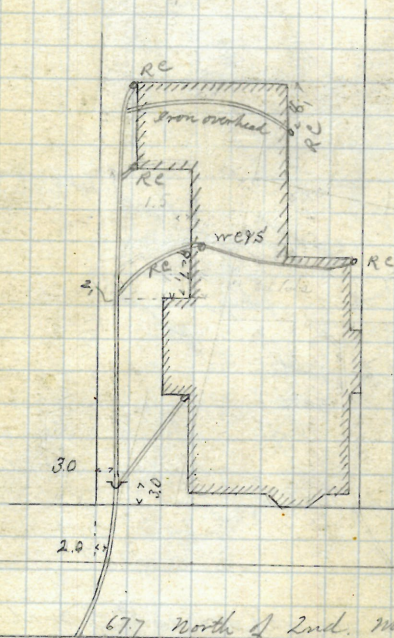
Cut at Curb 10.5

Opened Dec. 14, 1876

Closed Dec. 19, 1876

Reopened Apr 26 1886 by J.F.

Plotted



— Ringgold St. —

John E. Church

112 John St + 161 William

Alphens Midbury

D.B.

Permit No 1843

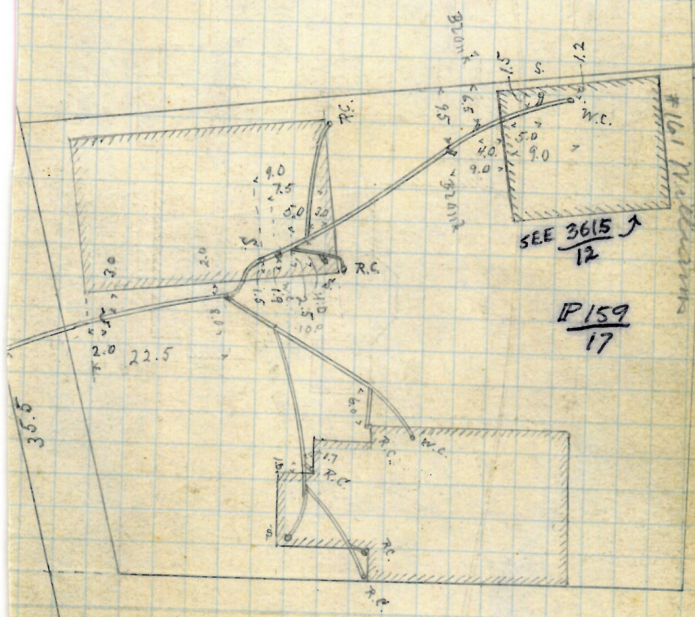
Opened Dec. 12, 1875

Closed Dec. 21, 1876

Cut at cut 8.4

Extended April 10-13 1877

Plotted



Governor St.



IP 161-25

S. E. cor Hope & Manning

Elbert Millard

J. L.

To prop line

Permit 1844

Cut at curb 4.00

Opened Dec 18 1876 C

Surface water 17.2

Surface Water

Opened to extend

Closed

Phyllis

19, Reopened - Oct. 21.

20 Closed - Nov. 9

G. F. Revisant

Crab. bldgs - 5" x

4" 3" & 1/2" Ira

10/ Reopened - Oct. 3

3 Closed Oct. 4,

P. W. Taff - Clear

P. W. Taft - CIA

disconnected

To prop.

June 2

44.2-

Drain

found here

233.5 - to north s.e. of George St

251.3 - to north t. c. of George St.

12, Replaced - 12/36/41

26 Closed - 12/26/41

P.W. Toff - clear

9, Reopened - 9/2/42

1/4 closed: 9/15/42

P. W. Taff - Discomet

177 Hope L.

Hope St

77





64  
64

Mrs. Anna Richmond

25 George St.

Extension of Permit No. 34

Extended to Water Chart &

Thos Phillips to

Jan. 22, 1877.

The remainder of this sketch  
will be found in M.B. 342, P. 14

Plotted



PS roadsuit

63.8 east of 4th M.H. east of Ramp

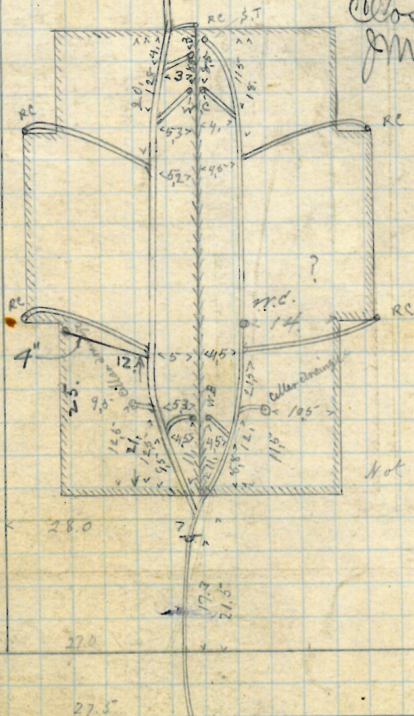
George St. -

65

Opened Feby 8, 1877  
Closed Feby 17, 1877  
Resumed Apl. 5-1905  
Closed " 8-1905  
D. L. Pierce D. L. - Repair

P207202 -  
 opened - Jan 30, 1934  
 closed - Jan 31, 1934  
 inventory clear

Bellar Dragma  
Connected in the  
Summer of '78



Not finished yet

Waterman St.  
16.3 west of 4th N.H. west of Grand St.



66

S. N

P.  $\frac{162}{7}$ 

GONE

Ebenezer Richmond

404 Pine St.

John O'Donnell

J. S.

Permit 1847

Opened

Feb. 21, 1877

Cut at curb 9.8

Closed

Feb. 26, 1877

Reopened Oct. 21-1903

Closed " 23-1903

J. D. Keeney S. L.

Plotted

GONE

Pine St.

7.5

7.5

7.5

7.5

7.5

7.5

7.5

7.5

7.5

7.5

7.5

7.5

7.5

7.5

7.5

7.5

7.5

7.5

7.5

7.5

7.5

7.5

7.5

7.5

7.5

7.5

GONE

Pine St.

7.5

7.5

7.5

7.5

7.5

7.5

7.5

7.5

7.5

7.5

7.5

7.5

7.5

7.5

7.5

7.5

7.5

7.5

56.9 east of Mt. St.

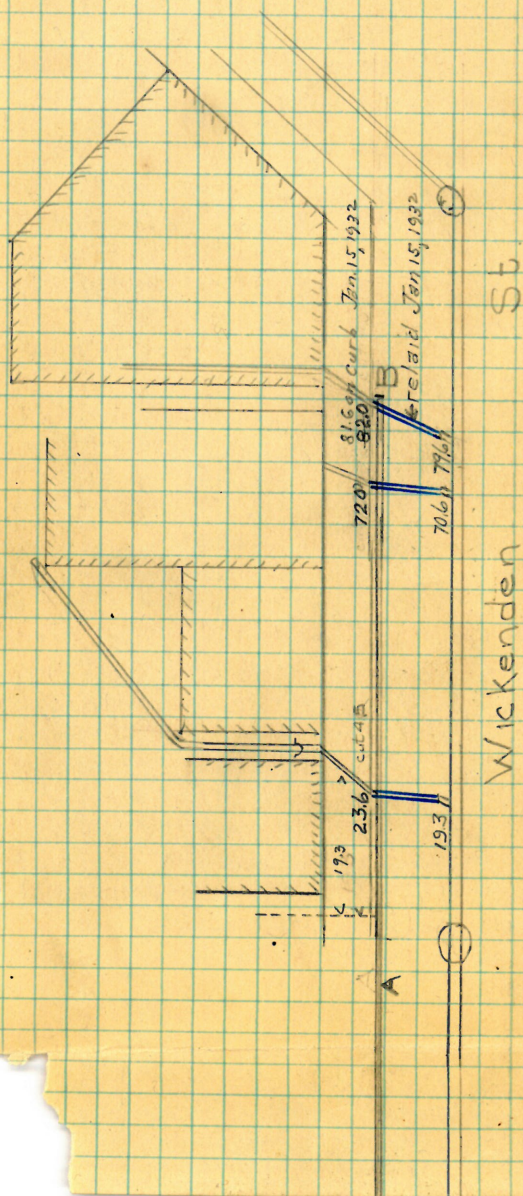
Summer

Pine St.

657-A.

Abby L. Bradley  
100-102 & 106 Wickenden St

Drains connected by S.M.D  
June 14, 1921  
etc



Line AB is private drain which is now abandoned  
Drains connected into sewer





$$\begin{array}{r} 157 \\ \hline 2 \end{array}$$

Ellen South

48 Walling St

John Keogh

Permit 1850

Cut at inst 9.1

Reopened June 1944

Closed Aug. 1<sup>st</sup> 94

Received Nov. 16-1920

Closed 11 1920

*S. Benedicelli* J. L.

Gleaner

Opened March 5, 1877

Exlosed March 6, 187

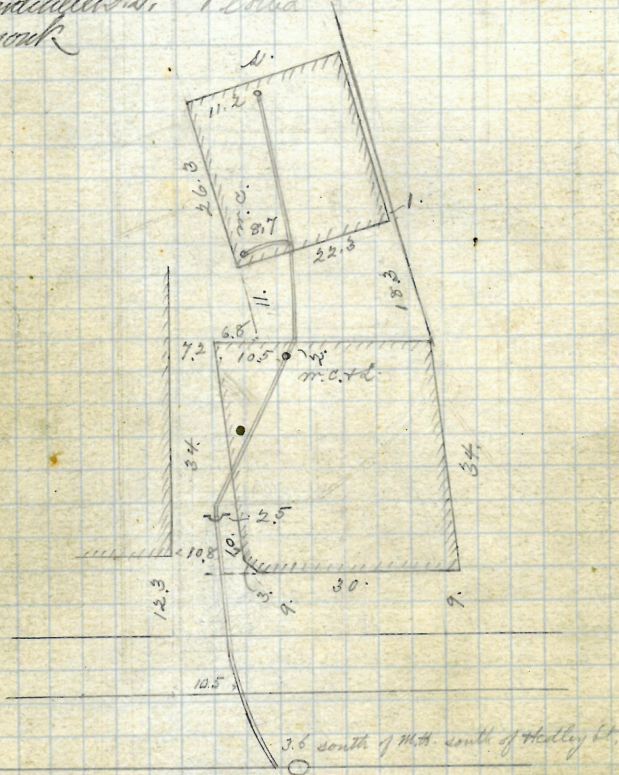
4 } P. Boulay D. L.

Reopened - Dec 4, 1934.

Closed Dec. 5, 1934

L.A. Gammund - Cila

Plotted



Walling St.



69.

Geo. E. Clarke  
504-510 508 Edo

508 Eddy St.

Michael Connelly  
J.C.

J. G.

~~insert 1857~~

Opened March 6, 1877

Int. at carb 9.0

Edward March 28<sup>th</sup> 1871

Received May 17, 1884 by J. F. Read

Reopened Nov 19-1886 - J. A. Blackman

Aug 10 1887

Plotted <sup>at</sup> 3<sup>rd</sup> Clement  
 & I picked up what  
 information I could  
 this diagram may not  
 be accurate Hart

Reopened + closed Feb. 25.

Reopened & closed Aug 4<sup>th</sup> 1997

Cleary - 1 m.c.  
 Cleary - 1 m.c.

Richard & Eliza  
Sept. 9<sup>th</sup> 99  
J. Beary D. B.

Diagram by  
Mr. E. J. H.

77.0 south of M.H. at Langley St.

Eddy St.

20  
70

Removed

Patrick Ward

28 39 Lippitt St.

John Keogh

S.L.

Permit 1852

Opened March 6, 1877

Cut at curb 9.9

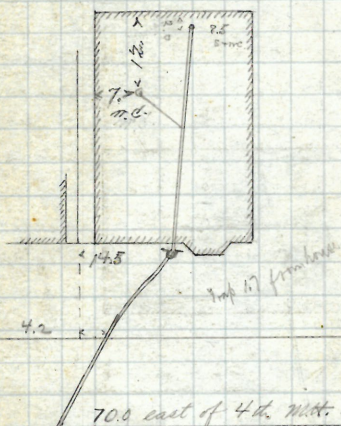
Closed March 10, 1877

Reopened Aug. 28-1919

Closed " 28-1919

J. Berardinelli & Co.

Plotted



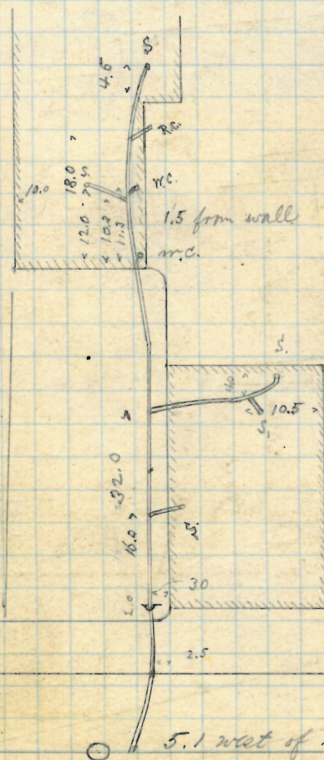


71  
71

Henry B. Eddy  
136-138 South St  
Michael Connolly  
D.L.

Permit 1853      Opened March 12, 1877  
at curb 9.9      Closed March 19, 1877  
opened & closed mch 20-1901  
M<sup>r</sup> F. Kennedy D.L. ~      ✓

Plotted



— South St. —

Harriet L Potter  
#116-120

S.E. cor. Pine & Potter # 32-50

Wm. T. Brown  
unical

Permit 1854      Opened March 12, 1877

Cut at line of carb 6.0 L. closed March 4.5, 1877  
D. 1. 2. 3. 4. 5. 6. 7. 8. 9. 10. 11. 12. 13. 14. 15. 16. 17. 18. 19. 20. 21. 22. 23. 24. 25. 26. 27. 28. 29. 30. 31. 32. 33. 34. 35. 36. 37. 38. 39. 40. 41. 42. 43. 44. 45. 46. 47. 48. 49. 50. 51. 52. 53. 54. 55. 56. 57. 58. 59. 60. 61. 62. 63. 64. 65. 66. 67. 68. 69. 70. 71. 72. 73. 74. 75. 76. 77. 78. 79. 80. 81. 82. 83. 84. 85. 86. 87. 88. 89. 90. 91. 92. 93. 94. 95. 96. 97. 98. 99. 100. 101. 102. 103. 104. 105. 106. 107. 108. 109. 110. 111. 112. 113. 114. 115. 116. 117. 118. 119. 120. 121. 122. 123. 124. 125. 126. 127. 128. 129. 130. 131. 132. 133. 134. 135. 136. 137. 138. 139. 140. 141. 142. 143. 144. 145. 146. 147. 148. 149. 150. 151. 152. 153. 154. 155. 156. 157. 158. 159. 160. 161. 162. 163. 164. 165. 166. 167. 168. 169. 170. 171. 172. 173. 174. 175. 176. 177. 178. 179. 180. 181. 182. 183. 184. 185. 186. 187. 188. 189. 190. 191. 192. 193. 194. 195. 196. 197. 198. 199. 200. 201. 202. 203. 204. 205. 206. 207. 208. 209. 210. 211. 212. 213. 214. 215. 216. 217. 218. 219. 220. 221. 222. 223. 224. 225. 226. 227. 228. 229. 230. 231. 232. 233. 234. 235. 236. 237. 238. 239. 240. 241. 242. 243. 244. 245. 246. 247. 248. 249. 250. 251. 252. 253. 254. 255. 256. 257. 258. 259. 260. 261. 262. 263. 264. 265. 266. 267. 268. 269. 270. 271. 272. 273. 274. 275. 276. 277. 278. 279. 280. 281. 282. 283. 284. 285. 286. 287. 288. 289. 290. 291. 292. 293. 294. 295. 296. 297. 298. 299. 300. 301. 302. 303. 304. 305. 306. 307. 308. 309. 310. 311. 312. 313. 314. 315. 316. 317. 318. 319. 320. 321. 322. 323. 324. 325. 326. 327. 328. 329. 330. 331. 332. 333. 334. 335. 336. 337. 338. 339. 340. 341. 342. 343. 344. 345. 346. 347. 348. 349. 350. 351. 352. 353. 354. 355. 356. 357. 358. 359. 360. 361. 362. 363. 364. 365. 366. 367. 368. 369. 370. 371. 372. 373. 374. 375. 376. 377. 378. 379. 380. 381. 382. 383. 384. 385. 386. 387. 388. 389. 390. 391. 392. 393. 394. 395. 396. 397. 398. 399. 400. 401. 402. 403. 404. 405. 406. 407. 408. 409. 410. 411. 412. 413. 414. 415. 416. 417. 418. 419. 420. 421. 422. 423. 424. 425. 426. 427. 428. 429. 430. 431. 432. 433. 434. 435. 436. 437. 438. 439. 440. 441. 442. 443. 444. 445. 446. 447. 448. 449. 450. 451. 452. 453. 454. 455. 456. 457. 458. 459. 460. 461. 462. 463. 464. 465. 466. 467. 468. 469. 470. 471. 472. 473. 474. 475. 476. 477. 478. 479. 480. 481. 482. 483. 484. 485. 486. 487. 488. 489. 490. 491. 492. 493. 494. 495. 496. 497. 498. 499. 500. 501. 502. 503. 504. 505. 506. 507. 508. 509. 510. 511. 512. 513. 514. 515. 516. 517. 518. 519. 520. 521. 522. 523. 524. 525. 526. 527. 528. 529. 530. 531. 532. 533. 534. 535. 536. 537. 538. 539. 540. 541. 542. 543. 544. 545. 546. 547. 548. 549. 550. 551. 552. 553. 554. 555. 556. 557. 558. 559. 560. 561. 562. 563. 564. 565. 566. 567. 568. 569. 570. 571. 572. 573. 574. 575. 576. 577. 578. 579. 580. 581. 582. 583. 584. 585. 586. 587. 588. 589. 590. 591. 592. 593. 594. 595. 596. 597. 598. 599. 600. 601. 602. 603. 604. 605. 606. 607. 608. 609. 610. 611. 612. 613. 614. 615. 616. 617. 618. 619. 620. 621. 622. 623. 624. 625. 626. 627. 628. 629. 630. 631. 632. 633. 634. 635. 636. 637. 638. 639. 640. 641. 642. 643. 644. 645. 646. 647. 648. 649. 650. 651. 652. 653. 654. 655. 656. 657. 658. 659. 660. 661. 662. 663. 664. 665. 666. 667. 668. 669. 670. 671. 672. 673. 674. 675. 676. 677. 678. 679. 680. 681. 682. 683. 684. 685. 686. 687. 688. 689. 690. 691. 692. 693. 694. 695. 696. 697. 698. 699. 700. 701. 702. 703. 704. 705. 706. 707. 708. 709. 710. 711. 712. 713. 714. 715. 716. 717. 718. 719. 720. 721. 722. 723. 724. 725. 726. 727. 728. 729. 730. 731. 732. 733. 734. 735. 736. 737. 738. 739. 740. 741. 742. 743. 744. 745. 746. 747. 748. 749. 750. 751. 752. 753. 754. 755. 756. 757. 758. 759. 760. 761. 762. 763. 764. 765. 766. 767. 768. 769. 770. 771. 772. 773. 774. 775. 776. 777. 778. 779. 780. 781. 782. 783. 784. 785. 786. 787. 788. 789. 790. 791. 792. 793. 794. 795. 796. 797. 798. 799. 800. 801. 802. 803. 804. 805. 806. 807. 808. 809. 810. 811. 812. 813. 814. 815. 816. 817. 818. 819. 820. 821. 822. 823. 824. 825. 826. 827. 828. 829. 830. 831. 832. 833. 834. 835.

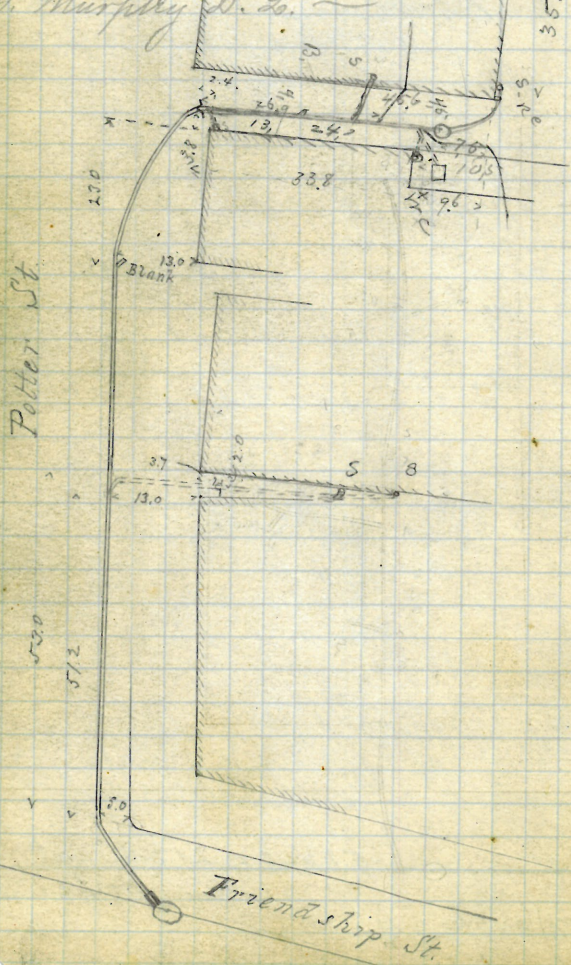
Reopened March 8-1879

8-1879 John W. Briggs  
 24-1879

Proposed June 20-1887 by J. F. Read

Proposed Jan 16-17-1902 - Plotted

P. Murphy D. L.



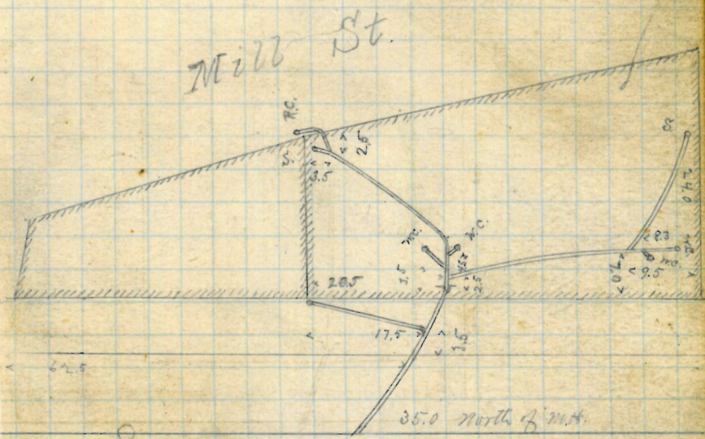
For a pattern of these work indefinitely known on this page,  
see Book 5 p. 151.



Patrick Kurney  
# 348 - 352 North Main St  
H. Mundell  
J.L.

Permit 1855      Opened March 13, 1877  
at cost 10.3      Closed March 20, 1877  
opened May 22-1901  
H. Lyons D.L. - Cleanout  
opened Nov. 5-1903  
Closed " 6-1903  
W. Bondry D.L. - Cleanout -  
opened Apr. 11-1910 -  
Closed " 12-1910 -  
W. K. Colgrove D.L. - Cleanout -

Plotted



North Main St.

Wm. G. B. Mowry Trustee  
 Nor Union # 79-896 43, 45, 47 Washington  
 John B. Bradley  
 S. L.

Permit 1856 Opened March 13, 187

Cut at curb 6.8 Closed March 16, 187

Reopened May 4-94

Closed May 4-94 J. H. Daniels S.

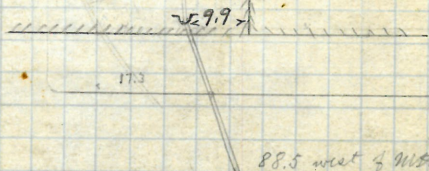
Repaired ✓

Reopened July 30, 94

Closed " 30, 94 Plotted

J. Holmes & Co. S. L.

Iron Pipe above  
 cellar bottoms



Washington St.

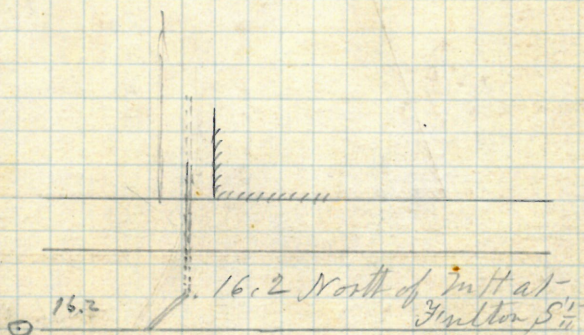


Anson W. Aldrich  
 49 Eddy St.  
 W. B. Horton  
 D. L.

Permits 1857

Opened & closed March 12, 1877.

Plotted.



Eddy - St

Edward Pearce

43 Clifford St.

John Keogh

S.S.

Permit 1858

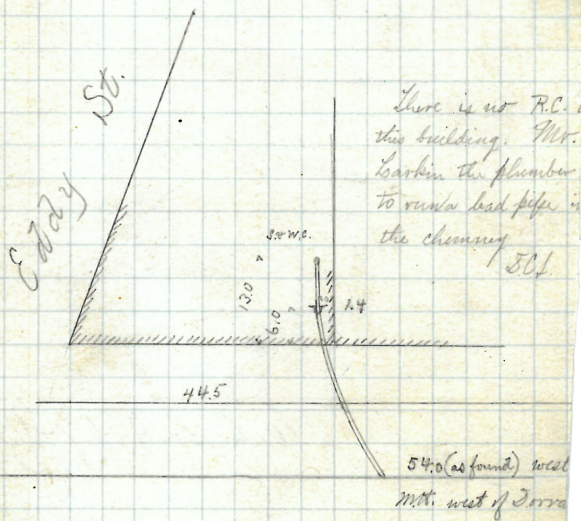
Opened March 19, 1877

Ent at curb 5.5

Closed March 20, 1877

Plotted

✓



Clifford St.





78.

Archibald Brook

269 - 203 Charles St.

John Keogh  
J.E.

Permit 1860

Cut at curb 9.8

Reopened Oct. 22, 1927

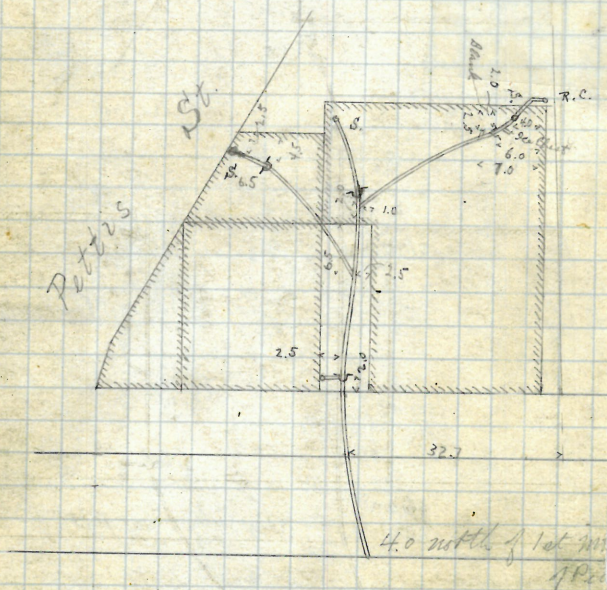
Closed Oct. 22, 1927

P.F.M. = Cullough D.L.

Opened March 20, 1877

Closed March 22, 1877

Plotted



- Charles St. -



J. P. Campbell

165 Angell St.

Alfred Munnell

J. L.

Permit 1861

Opened March 23, 1877

But at amt 85

Closed March 28, 1877

Reopened Oct. 25-1907

Reopened April 29-1914 by J. P. Campbell

Closed 11-26-1907

Reopened May 5-1914

L. B. O'Neil D. S.

Closed 11-11-1914

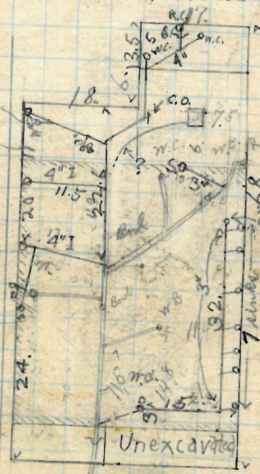
J. P. Dierney D. S.

Reopened July 10-1941

Closed July 16-1941

Morris Klein-add to bldg.

Neur



157  
2

Charles H. Sawyer  
287 Charles St.  
John Keogh  
J. C.

Permit 1863

Opened March 22, 1877

Cut at curb 9.8

Closed March 24, 1877

Recd June 17 1946

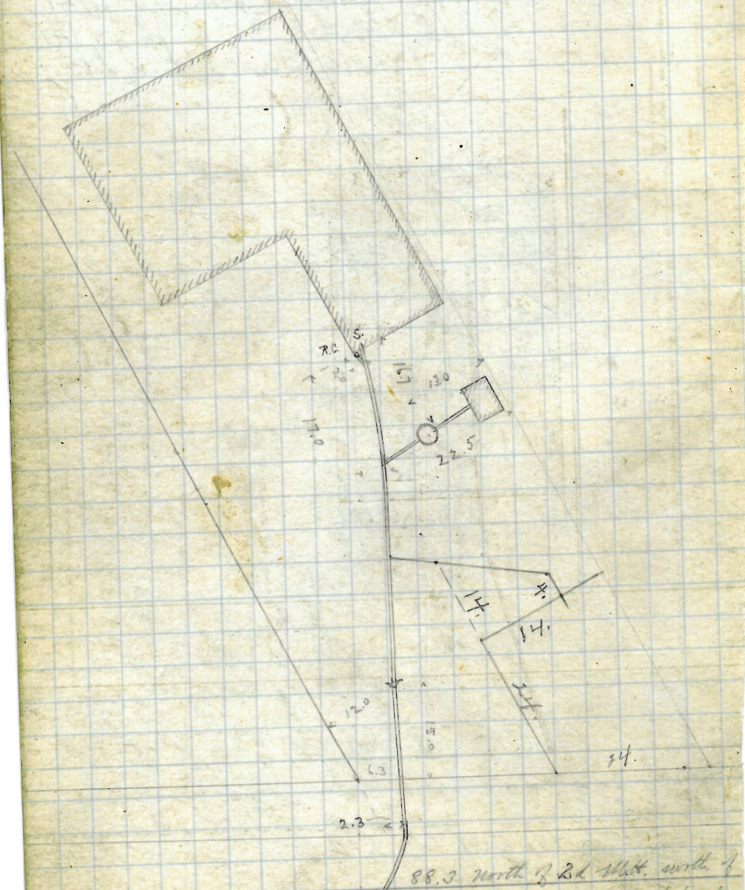
Rec June 26 1946 6/24

Also June 17, 1946

Oct June 26 1940

add for bldg R Garments

acid line & Return & Return  
Plotted



West River St.



GONE

81  
81

George M. Hunt  
270 S. Dudley St.  
Geo. M. Hunt

S.S.

mit 1864

5 out 10.3

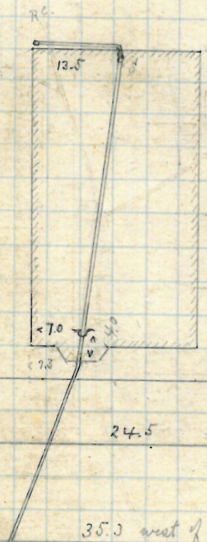
med 10/20/67

10/20/67

new, relay S.S.S.

Opened March 29, 1877  
Closed March 30, 1877

Plotted



The work in the  
house was done  
before permit  
was taken out

35.3 west of S. St. west of B. St.  
S. St.

Dudley St.

35.3

82  
82

P-157  
18

Thomas B. Wilbur

252-254 ~~43+45~~ Dudley St.

Geo. M. Hunt

J.C.

Permit 1865

Cut at curb 10.1

Reopened + closed May 14, 1927 - Geo. B. Lewis &

Reopened Th. 1/28

Closed " 1/28

J. Knight D.L.

Reopened Feb. 23/29

Closed " 25/29

J. Derry D.L.

Reopened April 18, 1931

Closed

M. M. Nally D.L.

Reopened Aug 17/32

Closed Aug 18/32

J. Bush D.L.

Reopened - Nov. 16, 1938

Closed - Nov. 16, 1938

J. J. Morris - closed

Open again

Opened March 23, 187

Closed March 29, 187

Reopened Dec. 2, 1930

Closed

J. B. Roberts D.L.

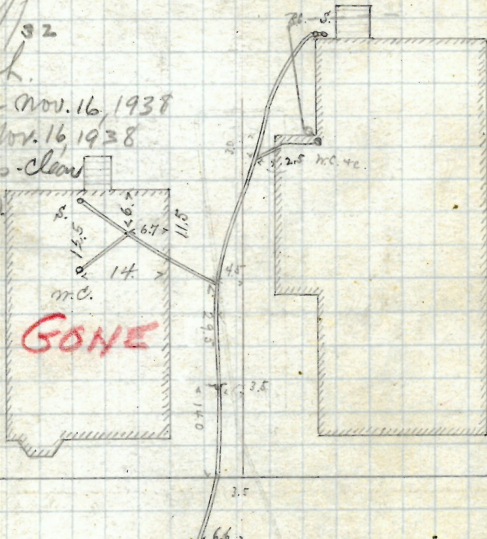
Reopened Dec 7, 1930

Closed Jan 7, 1930

J. B. Roberts D.L.

Closed

Chamout



15.1 west of 3d M.H. west of

Dudley St.



Benjamin Cartwright

48

22 Maple St.

Frank R. Holden

J.L.

Permit 1866 Opened March 29, 1877

Cut curb 9.2 Closed April 3, 1877

Closed Aug. 13-1921

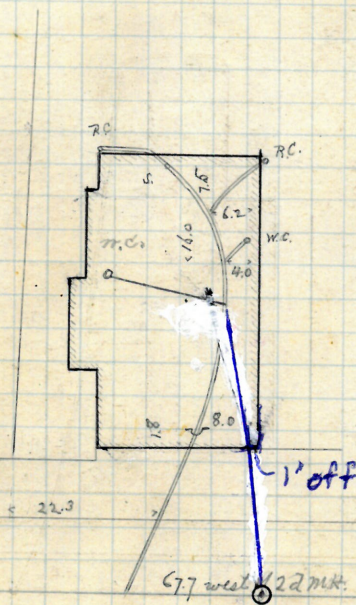
Closed Nov. 15-1921

C.B. Sweeney, J.L.

P162-16

Plotted

Opened: May 2014 D.L. Dennis Diffley  
 Permit #50745 Class A repair  
 Cut @ curb 6'



Maple St.

Nath. C. Bushee

#171

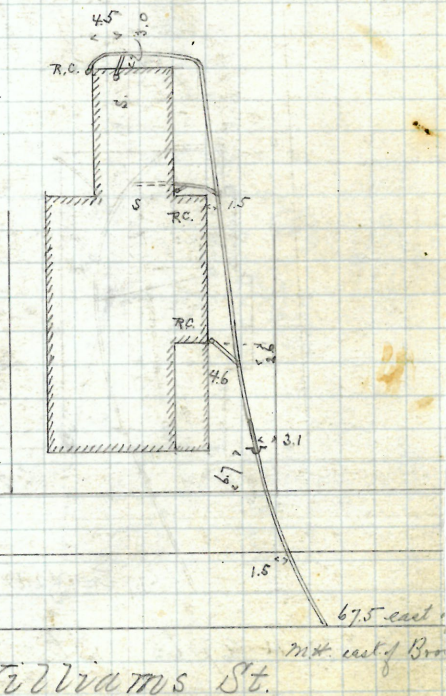
105 Williams St

Thos. B. Ross

S. L.

Permit 1867  
Cut at curb 6.8Opened April 2, 187  
Closed April 5, 187

Plotted







Harriet B. Brownell

Clemence St.

John W. Briggs

Permit 1869

Int at curb 8.5

Opened May 17, 1934

Closed " 11 1934

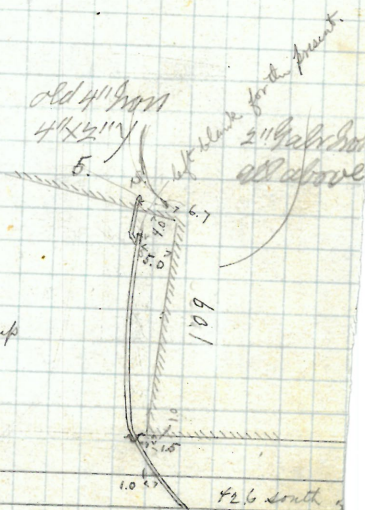
J. C. Dickey, S. L.

Opened March 27, 1937

Closed March 28, 1937

Plotted

Building not yet put up



Clemence St.



87  
**GONE**

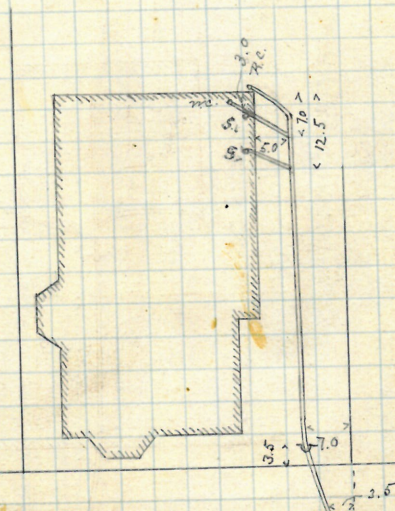
C. J. + E. M. Pabodie  
34-36 Somerset St.  
Asa K. Liley  
J. L.

Permit 1870  
to cut curb 10.3

Opened April 9, 1877.  
Closed April 13, 1877.

L

Plotted



37.0 north of 2nd  
mth. north of Pine St.

Somerset St.

M. B. Mead

109-1178 Aborn St.

Patrick C. Barker  
S. L.

Permit 1872

Opened March 28, 1877

Cut at cart 8.6

Closed March 29, 1877

Reopened Dec. 30-1915

Closed " 31-1915

E. Gibbons D. L.

Reopened May 6/19

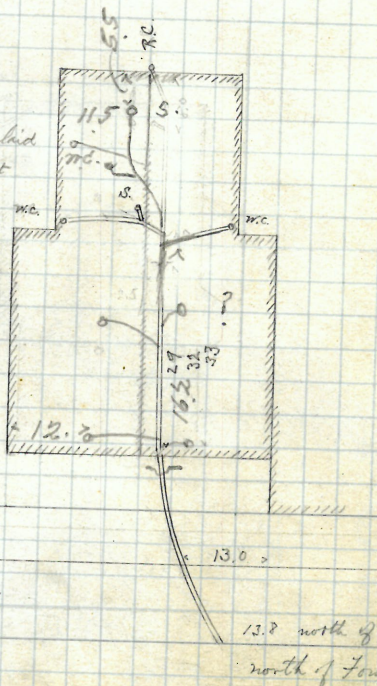
Plotted

Closed " 29

P. Jerome St.

See Book 937/63

The drain in the house was laid  
before a permit was taken out  
Hence it was not inspected  
The locations I got from the  
drawings and I believe to be  
correct S. C. Stone



Aborn St.



REMOVED

89-1

Wm. A. Gudgeon  
Pt Point St.

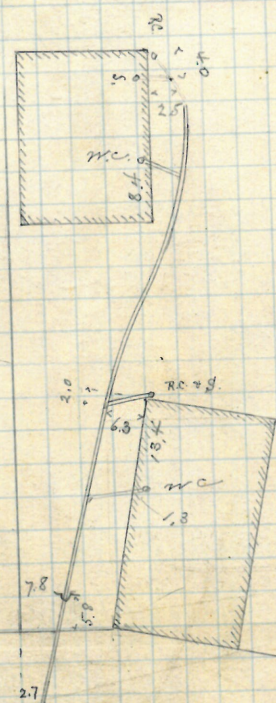
John W. Briggs  
S. No.

Permit 1875  
Cut at ant 9.0

Opened March 29, 1877  
Closed April 3, 1877

Revised Nov. 1892 } to add 2 mc  
and " 26, " } T. Phillips & Co. DC

Plotted



76.6 west of 2<sup>nd</sup> MH west of Hospital St.  
Point St.

Elizabeth A. Gammon

# 30 - 32 Power A.E. cor Mill

David W. Barry

Permit 1877

lost at curb 8.7

Opened April 2, 1877

Island April 7, 1877

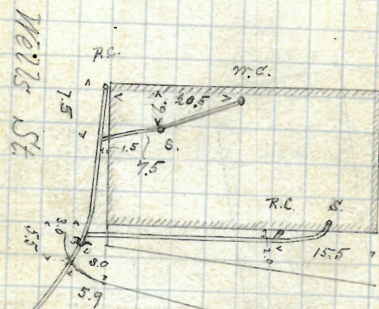
Reopened & closed May 1 - 1897

Cleanout - Thos Phillips & S. L.

Reopened & closed Sept. 6 - 1900

Wm Condry & S. L.

Plotted



Power St.



9/9

Ellen F. Murray

126 Plank St.

James Brady

J.S.

unit 1874

at curb 10.3

found

Opened March 30, 1877

Closed March 31, 1877

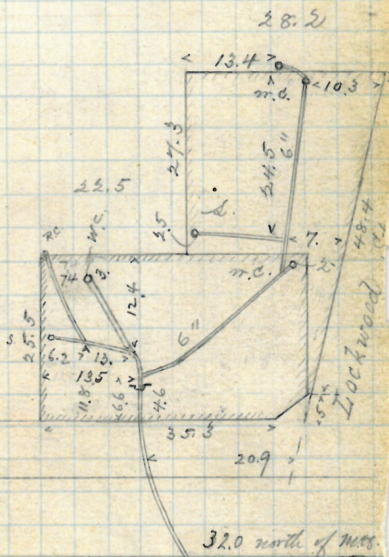
Reopened July 17- 1896

Closed July 18- 1896

H. C. Chadwick J.S.

Plotted. Aided inside 6" for 4'

Plotted



Plank St.

92

92

Locate house from other house

Allen Greene

#64

#36 Keene St.

A.B. Horton

S.L.

Permit 1873

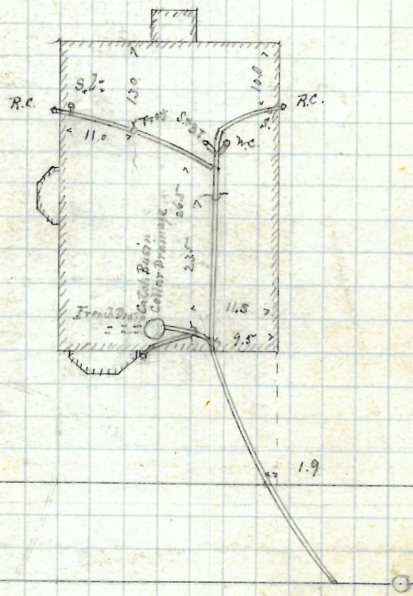
cut at curb 9.8

Opened April 2, 1877

opened & closed Sept 13-1905 closed about June 9, 1911

Mulvihill S. L. Exchange

P2022-02



Keene St.

about 6 ft. thick



93

Opened May 14<sup>th</sup> 1871

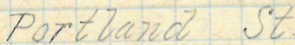
Closed May 18th 1877

opened June 19-1883 by J. F. Ried D.D.

opened - June 7, 1933

used - June 8, 1933

Moore Jr. 411 line plotted



94  
9A

Sutton

Edward B. Waters

10 Sutton St

J. F. Read

S.L.

Permit 1576

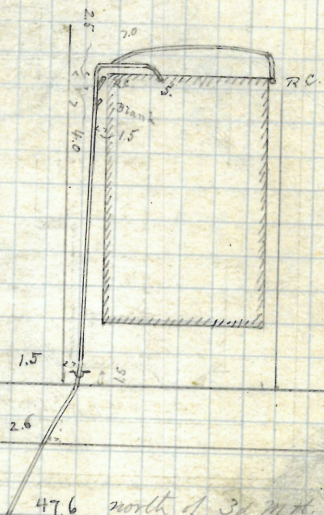
Opened April 3d. 1877

Cut at curb 92

Closed April 12th 1877

✓

Plotted



Sutton St.



GONE

95  
95

Bernard O'Byrne  
102 S. 104th Plain St.  
James Brady  
S. L.

Permit 1878 Opened April 3d 1877  
at cost 10.0 Closed April 7th 1877

opened Feb'y 14-1908  
closed " 14-1908

J. H. Brown D. L.

used Sept. 18-1924

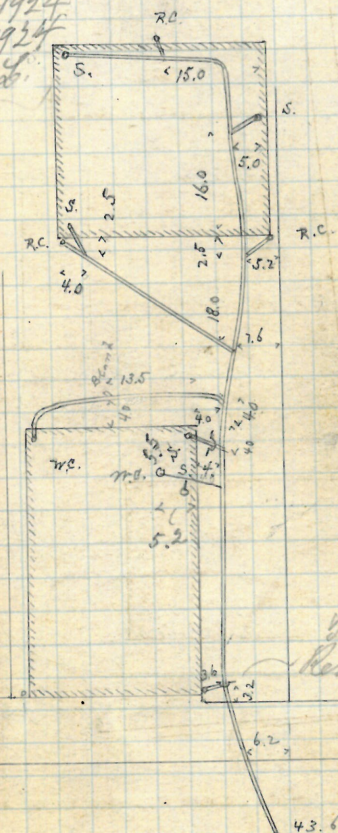
red 11-1924

ordinance D. L.

knownt

Plotted -

Constructed 1878-1879  
Closed " 3-1926  
J. H. Brown D. L.  
Delay into 1879 at Mt.



Plane St.

43.6 north of Mt. St.  
Borden St.

James H. Mumford  
 134 Benefit St  
 Wm Andrews & Son  
 S. L.

Permit 1879      Opened April 2d, 18  
 Cut at curb line 7.7      Closed " 16th,

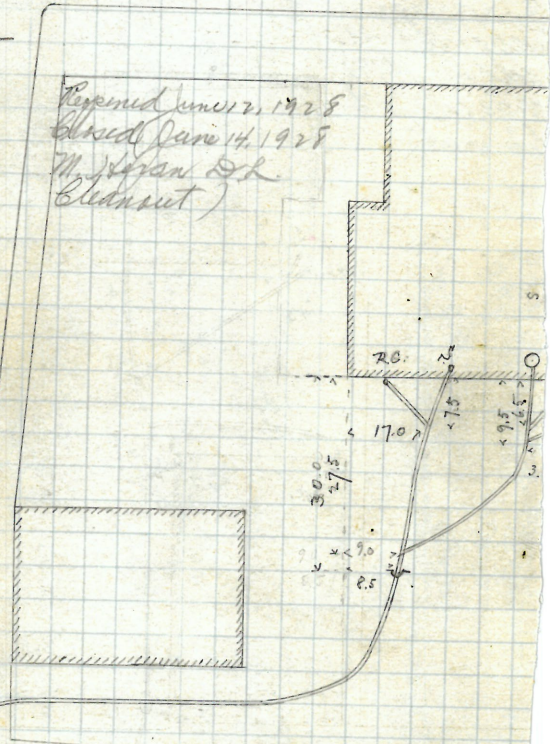
Benefit St. Plots

P  
 168  
 7

Opened June 12, 1928  
 Closed June 14, 1928  
 W. H. Hagan & Co.  
 (Closed out)

Cady St.

6.83 width of St. with  
 water 2 ft. from curb

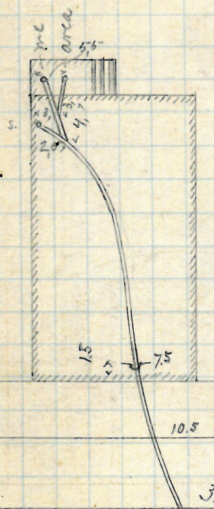




Lillie C. Cole  
 125 Elm St.  
 W. F. French  
 D.C.

Permit 1880 Opened April 2, 1877  
 at mt 8.0 Closed April 4, 1877  
 extended Apr 10 - 1880  
 " " 10 - 1880 by W. F. French  
 reopened May 29 - 1907  
 closed " 30 - 1907  
 L.C. Dunn D.C. - cleanup

Plotted



Elm St.

Chas W. Howard  
 70-76 34835 Central St.  
 John O'Connell

Permit 1581

Cut at curb 9.9

Opened April 2d 18

Closed April 16, 18

Reopened " 26-18

Reopened Aug 16, 1888

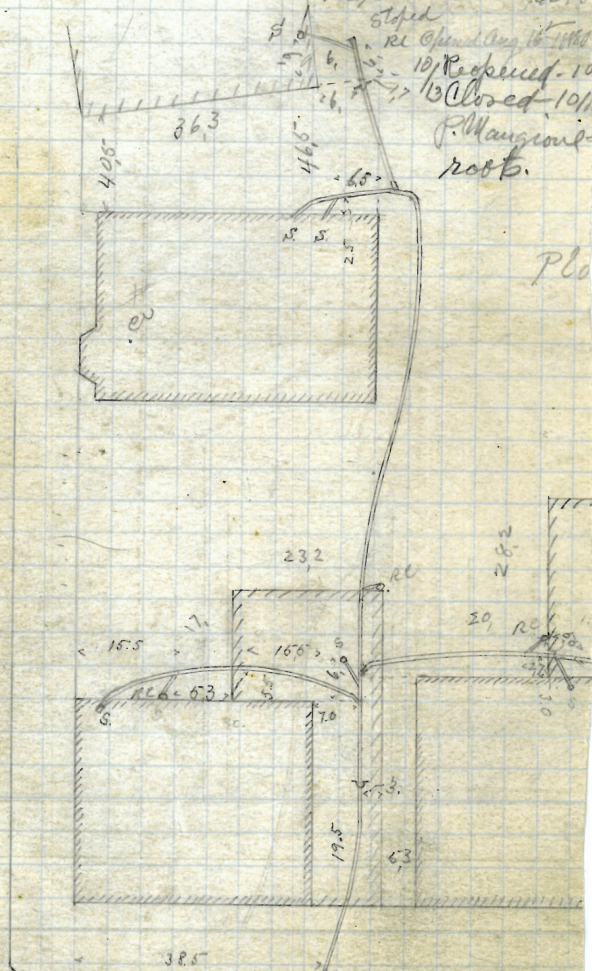
Reopened 10

Closed 10

P. Mangione

roofs.

Major St.



Central St.

78.0 incl of road at May



Henrietta K. Brownell  
 Cor Rick & Dyer  
 Peter J. Farrell

SL

ermite 1882-1886

at curb 5.0

4.9

Opened April 4, 1877.

Closed April 12, 1877.

used Sept 19-1902

col " 19-1902

by R. Halstead, L.S.

used April 1-1907

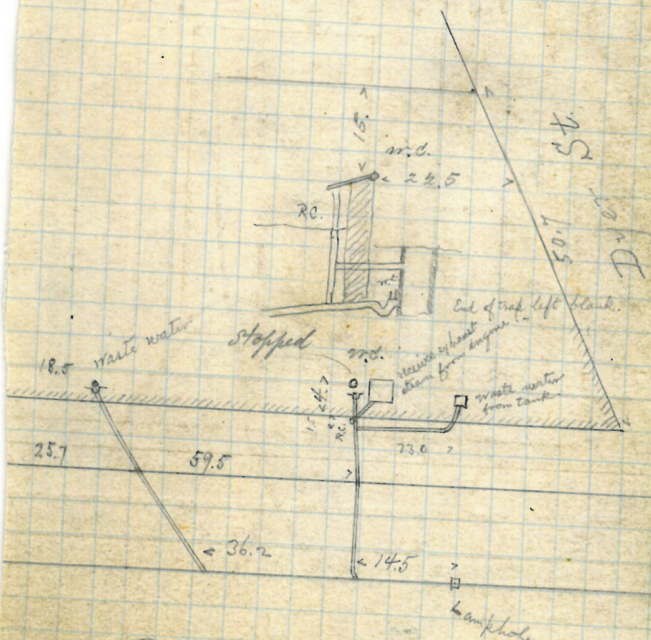
d " 2-1907

Turning D. L.S.

Reopened March 13-1902

by H. H. Chadwick, L.S. - Belmont

Plotted



Peak St.

1886

1882





Wm H. Mason

6 Sutton St

J. Frank Read  
S. L.

mit 1883

Opened April 5, 1877.

at curb 9.0

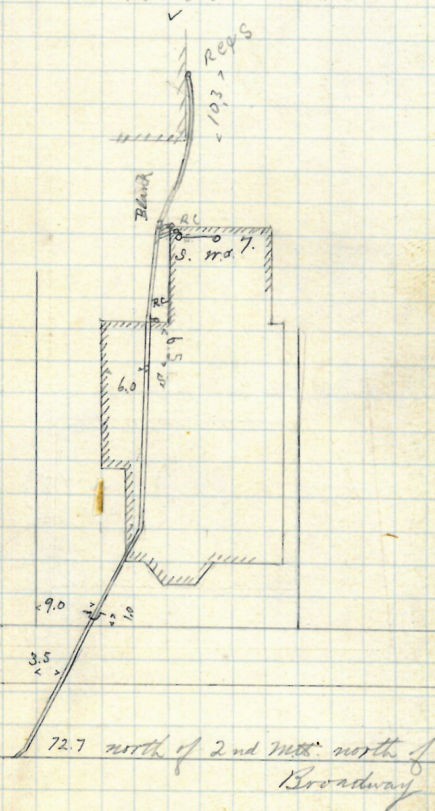
Closed April 7, 1877.

ed Dec. 21-1908 - Reopened Sept. 7-1877

ed 11. 21-1908 - Closed 1. 7 1877

ello S. L. - Reopened May 25-1877

Plotted -



Sutton St.

72.7 2nd m

102✓

**Removed**

George Welch

40 23 Carpenter St.

Wm. T. Brown

J. L.

Permit 1885

cut at cut 10 ft.

Opened April 9, 18

Closed April 10, 18

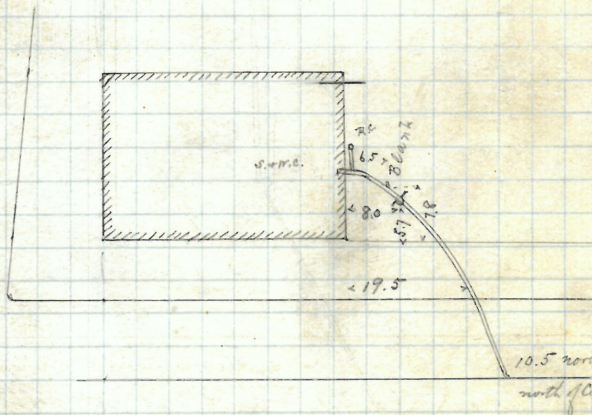
Repaired Jan 22/30

by " 23 "

C. G. Hall Dr.

Plotted

Carpenter St.



Lemon St.



R. F. Black &amp; Syc Works.

632 Eddy St.

David S. Anthony  
S.E.

Permit 1884

Opened April 9, 1877

13

49.0

&gt;

12" pipe

520 west of Mt. #1

Plotted

150.



GONE

80 Plain St.

James Brady  
JL

Opened April 9, 1877.

Cut at curb 10.0

Beloved April 12, 1877

Reopened July 11, 94  
Closed. July 13, 94

A. B. Daniels

Relay without change of or addition to plan

Reopened Sept-1896

Plotted —

Closed " 10965 J. J. Shanley D.D.

Revised Aug 23, 1928

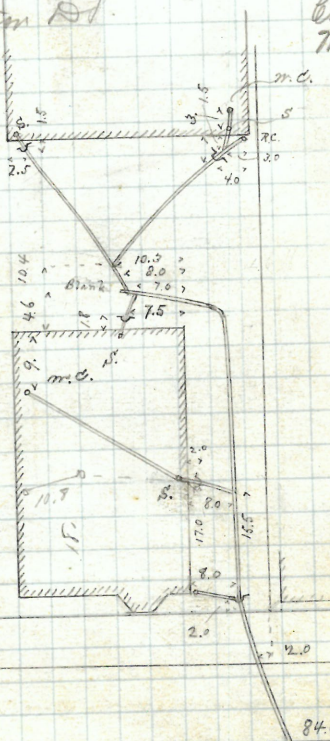
Shred Apr 23, 1928

Henry J. Bannister Dd.

Revised May

Closed

M Lyons Dr



84.0 north of Mt. at

— Plain St. —





106

Albert Weaver

#187 Cor. Power &amp; Governor

Thos B. Ross

8 1/2

Permit 1889

Cut at curb 7.2

Reopened Jan. 22/29

Closed " 23/29

R. A. Keyes &amp; Son 15

Opened April 10, 1877

Closed April 14, 1877

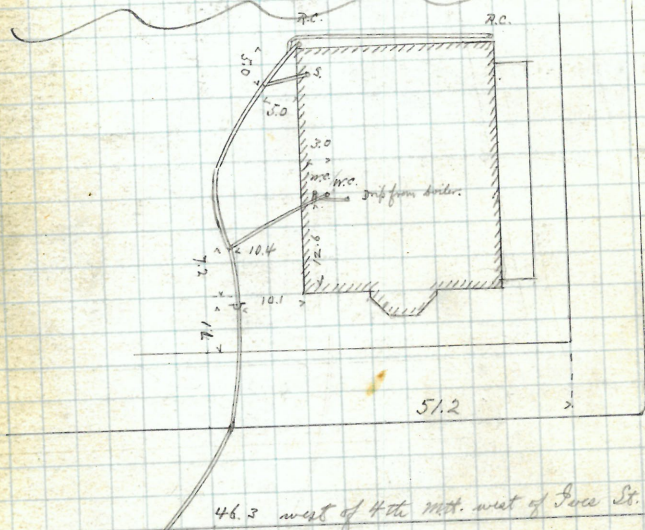
Reopened - 7-21

Closed - 7-29

R. GORN

POWER ST.

GOVERNOR ST.



— Power St. —





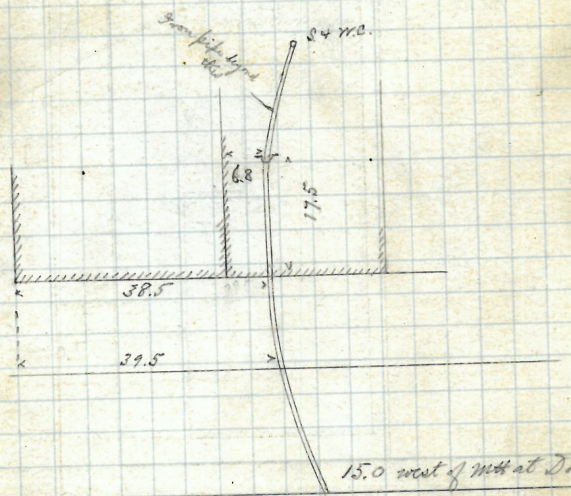
108

1147 Mary J. Sheldon  
585 + 587 High St.  
Sol. Thornton  
JL

Permit 1891  
Cut at curb 10.3

Opened April 9, 1877.  
Closed April 12, 1877

Plotted



- High St -





F. M. Lanthier - Trustee

22 Union St.

Ellery Millard

Permits 1893 &amp; 1913

Cut at crest 7.5 north. Opened April 10, 1897

7.6 north - Closed May 1, 1897

For Exp. Work done under this permit

Sept. 17-1901 - See Book No 311 Page 107 -

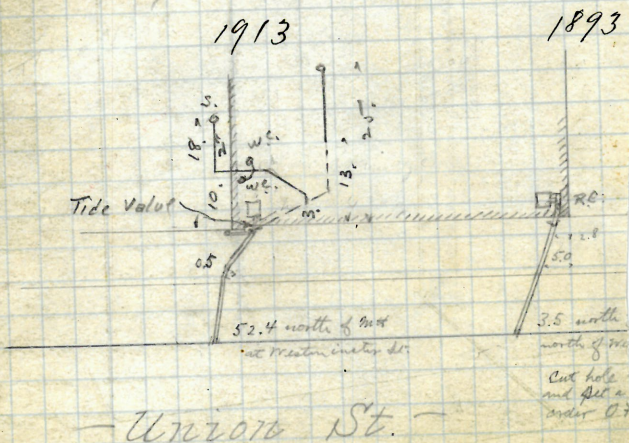
5, Reopened - May 8, 1939

8 Closed - May 9, 1939

J. E. Graham - Add.

Permit # 1913

Plotted





111  
Sylvester H. Vaughan

65 Knights St.

J. Frank Read  
S.S.

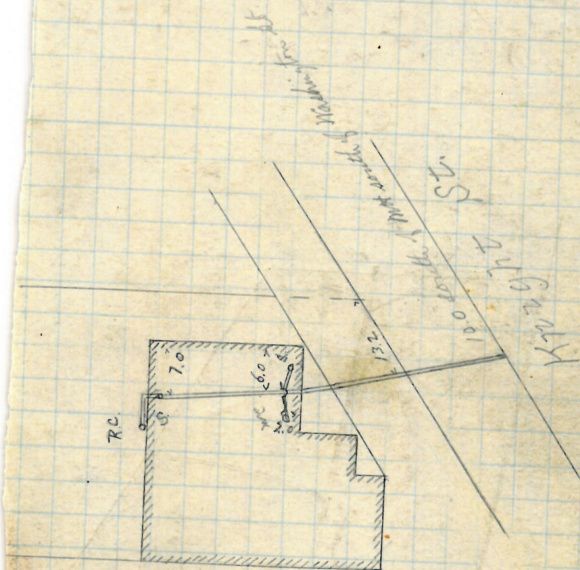
Oct 1894

Opened April 11, 1877

cont 10.2

Closed April 12, 1877

✓  
Plotted



Washington St.

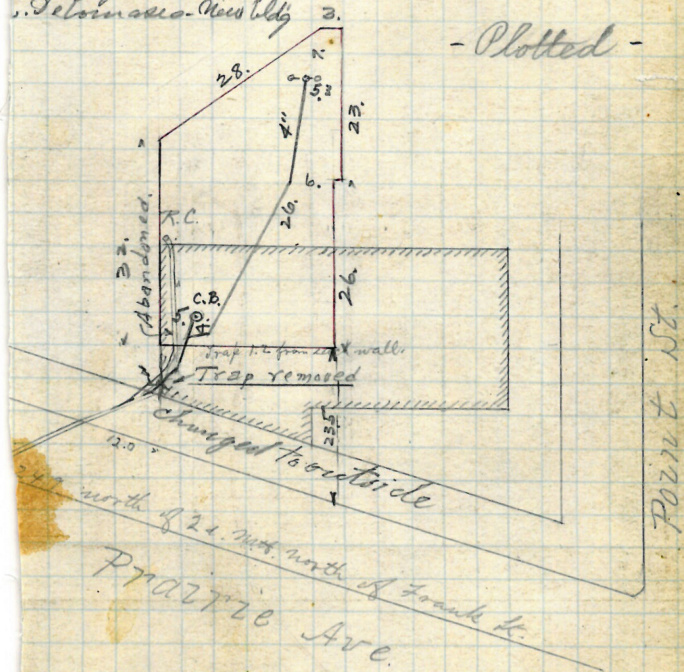




113

27

- Plotted -



114

~~REMOVED~~

Charles W. Brown

186 Clifford St

Wm. L. Brown

J. L.

Permit 1877

Cut at curb 8.8

Opened April 13, 1877

Closed April 17, 1877

Reopened Sept 10 - 1881

By J. B. Peck

Closed " 10 - 1881

Produced Aug. 25 - 1924

Closed " 26 - 1924

J. B. Moore &amp; D. L.

Chambers

Plotted



34.0 west of 2d west of C

Clifford St.



GONE

P 174  
34

115

Silas A. Sweet

517 Judge St.

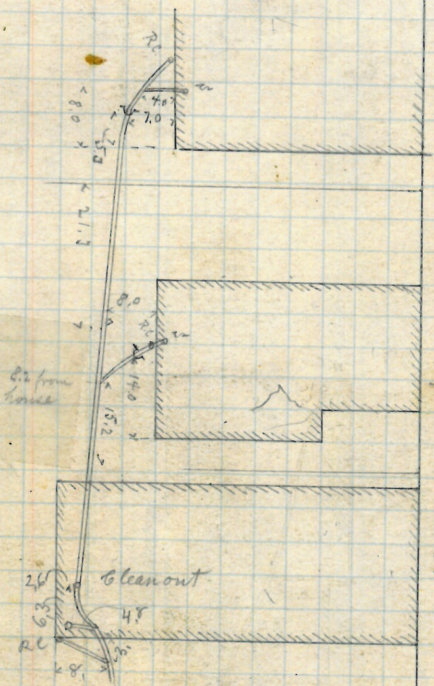
Sol Thornton D.L.

Permit 1898B

Opened & closed April 12

by Frank R. R. R. & closed June 21-1879

No Plan



Dodge St.

Originally an extension of Permit No. 1711  
Note Book 188 p. 97

116

Mary J. Reynolds

27 Sutton St.

J. Frank Read

J.D.

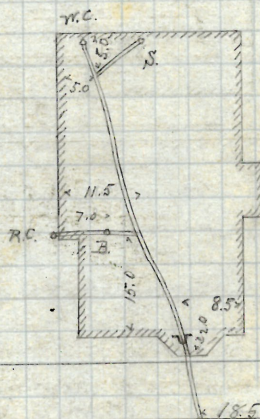
Permit 1899

Cut to cut 10.0

Opened April 13, 1877

Closed April 14, 1877

Plotted -



Sutton St.



Removed

117.

Samuel S. Spurgeon  
128 ~~358~~ Broad St  
Henry F. Mason  
Jr

Opened April 16, 1877.  
Closed May 1, 1877.

Permit 1903

Cut at cut 10.8

Reopened Jan 6-1916

closed 11 7-19/6

W. Keller D. L. -

Plotted

72.1

325

Basin

Beaconhurst

50.0 down of 74.4. at Broad St.

Broad St. —

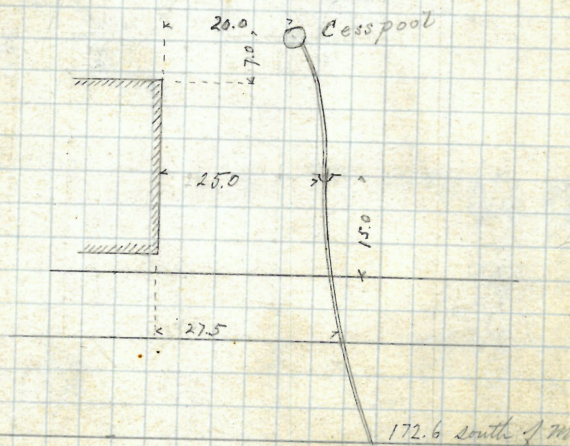
S. H. Manchester  
475 Eddy St

John O'Donnell  
J. L.

Permit 1901  
Cut at curb 6.5

Opened April 12, 1877  
Closed April 14, 1877

Plotted



- Eddy St. -

172.6 South of W  
at Manchester S  
No form or trace  
this permit as a  
hole into sewer at  
a level in S



P-157  
6

119 ✓

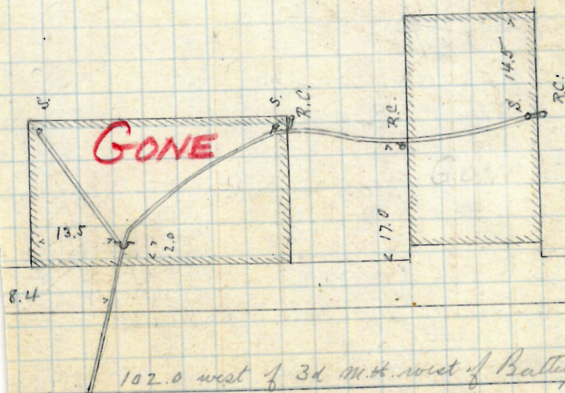
Lyman A. Kauchan Exp  
~~458-1112~~ Washington St.  
J. Frank Read  
S. La.

mit 1904  
to cut 10.2

Opened April 16, 1877  
Closed April 18, 1877

✓

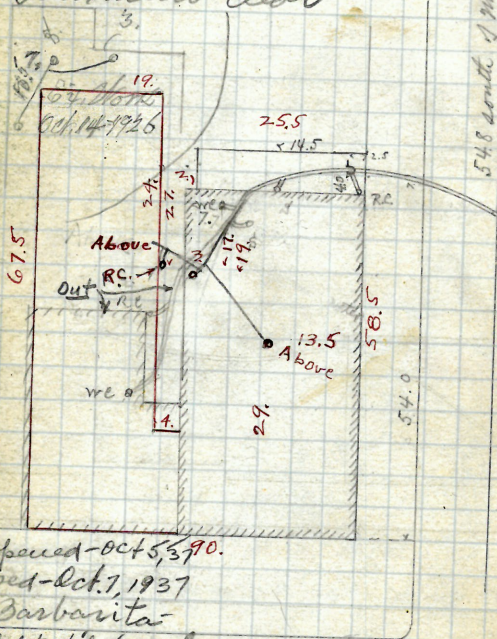
Plotted -



Washington St

Hugh B. Bain  
# 150-182 48 Broadway  
L. Wendell

Permit 1905  
Cut at curb 9.7  
Reopened June 29, 94  
Closed July 20, 94  
C. R. Blackburn  
Cleanout Potts Plotted  
Reopened May 13-1904  
Closed " 17-1904  
Wm. Chadwick  
Reopened Feb. 27, 1937  
Closed Feb. 27, 1937  
" Jamminis - Clear



54.8 south of Wm. at Broadway

Found no connection here so  
cut back in pipe for other Clapp.

Reopened Oct. 14, 1936  
" 15, 1936

Ringgold St.

Reopened - Oct 5, 1930.  
Closed - Oct. 7, 1937  
J. Barbarita  
Add to Bldg - Reloc.  
Broadway



REMOVED

121

Wm. H. Atwood

Cor Central & B. Sts

John O'Connell

B L

Permit 1906

Opened April 17, 1877

at cut 103

Closed April 21, 1877

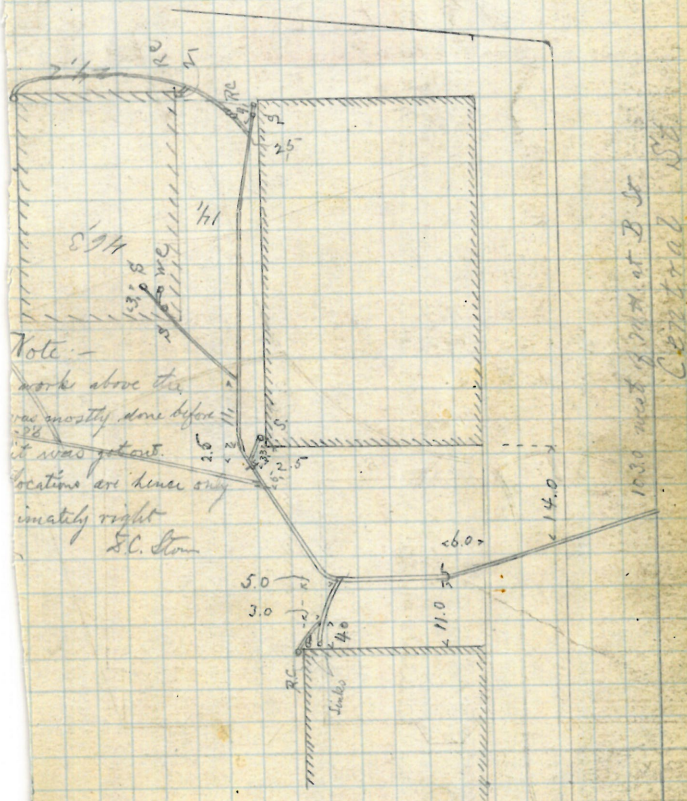
and May 26-1894

Reopened Sept 2, 1894 by Brady

by B Brady DZ.

Plotted.

B St.







# Removed

Olva Woods

57

Broadway

John George

S.C.

Permit 1907

cut at curb 9.5

Opened April 17, 1877

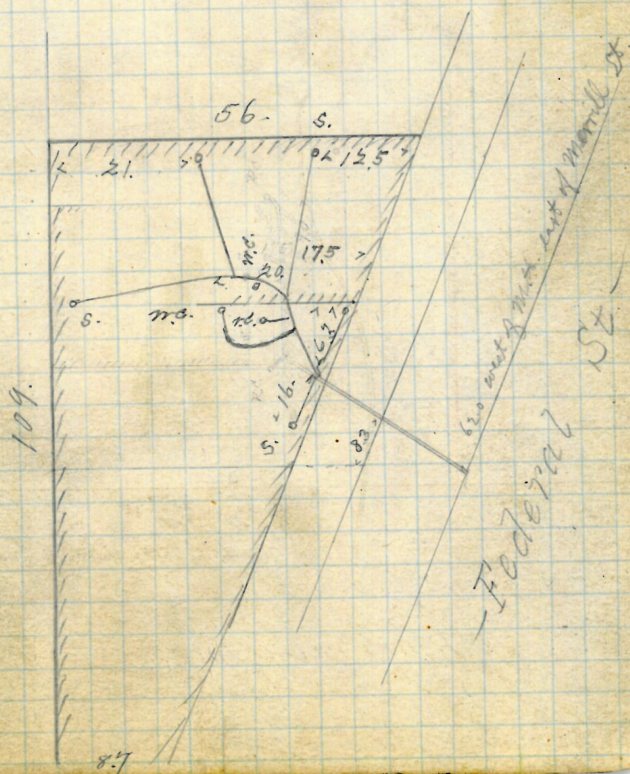
Closed April 19, 1877

Reopened Nov 3-1913

Closed " 6-1913

D. E. Manney D.L.

Plotted



GONE

# 62 J. C. Puck  
36 Prairie Ave.  
J. C. Puck

Permit: 1914

Cut at curb 10.1

Reopened Mch 21-1901

Closed " 22-1901

W. H. Chadsey S.L.

Relay

Plotted

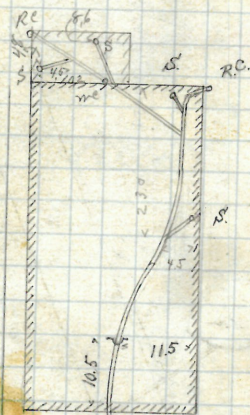
Reopened Apr 4 + 22-1901

Relay - W. H. Chadsey S.L.

Reopened Oct. 2 1912

Closed " 3-1912

Burlingame S.L. Clear.



Work inside  
was done before  
was taken out  
locations are only approx.

80.0 north of north of lower

Prairie Ave.



~~Received~~  
6 - 1/2 lb. H. ...  
71 - 75 Pound

71 - 75 Pond

O.C. Moulton

24.

Erntet 1916

 $\frac{1}{2}$  at curb H. /

used Nov. 25, 1927

red. Nov. 25, 1927

Wahoney DL

Opened April 21, 1877

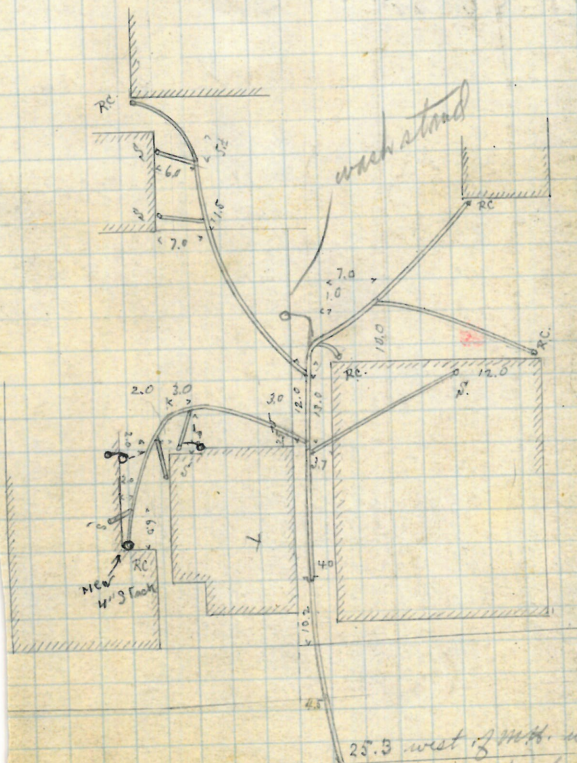
Closed April 30, 1877

Revised Mar 1, 1930

Alfred. 3

J. A. Mahoney Lt

FR 0722e



25.3 west 3 m. west of  
Angle St.

Pond St.

Removed

Burgess &amp; Williams

Cor. Perkins &amp; Saunders

John O'Donnell  
J.B.

Permit 1991

Closed June 11, 1877

Closed June 18, 1877

Reopened Apr. 18, 1940

Closed Apr. 25, 1940

R.A. Keyes - clear

Perkins St.

16.0 7 catch basin waste water

14.7

20.0

Plotted

See Note Book 578.  
183

Pearl St.



Removed

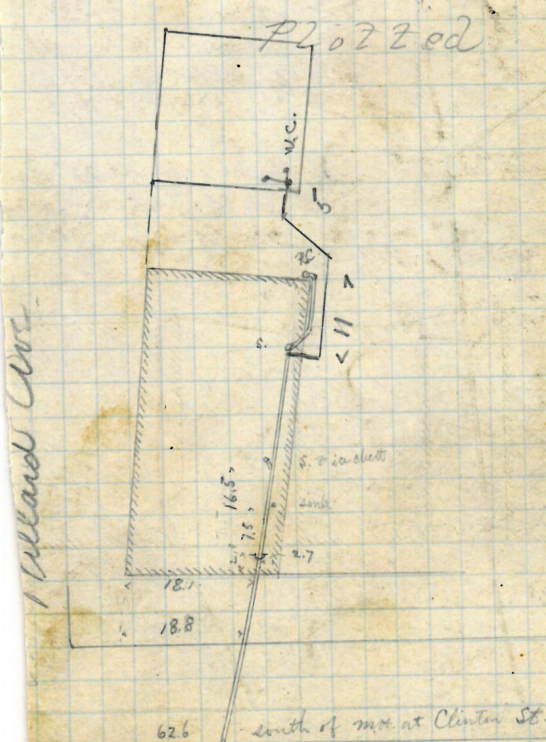
127

Given Campbell  
#144 S.E. cor. Prairie Ave. & Millard Ave.  
James Brady

int 2095 Opened Sept 10, 1877  
at cost 9.0 Closed Sept 12, 1877

may 20 1947 5/20/47 ded Oct 2, 1877

may 20 1947  
Asmblg of Silvers 10¢



Prairie Ave.

128

Removed See 2284  
42

Owen Campbell

236-244 136+138 Prairie Ave.

lot 644

James Brady

J.D. #11

Permits 2099 + 2100

Opened Sept 13, 1877.

Cut at cart 9.6 + 9.3

Closed Sept 15th + 21

Reopened Oct. 7-1909

Opened to extra Oct 1st

Closed " 8-1909

Closed " "

J. E. Graham S. L. - Reopened Apr. 1944

Reopened Mar. 23-1922

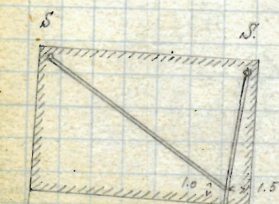
Closed " 1944

Closed 1922

W. Scherby S. L. -

W. Scherby S. L. -

P 207802

- For 4. Work done  
under this permit

Apr. 29 - Aug. 14

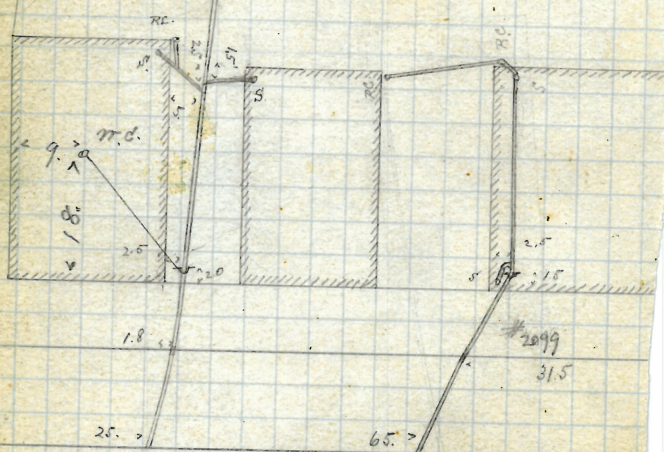
Oct. 30 - 1923 see

Ch. 16. 428469, 1644

19 Reopened - Oct 28, 1942

126 Closed - Oct. 28, 1942

J. D. Lammimo - clear



2d. M. H. east of Robinson St

Prairie Ave.



GONE

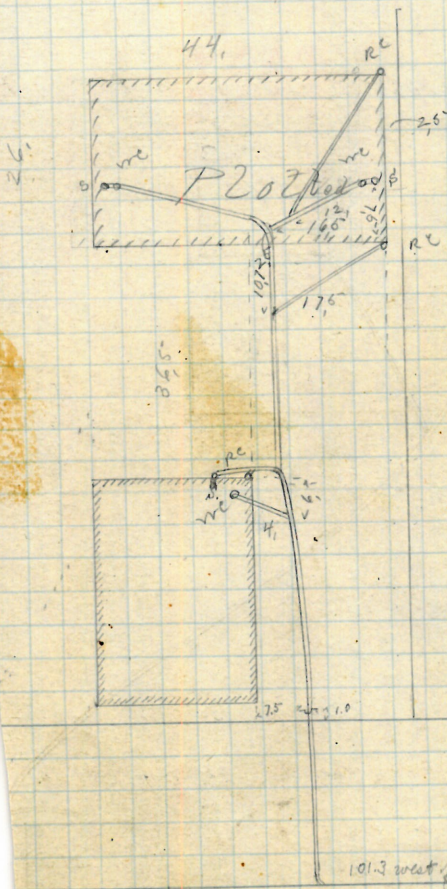
129

James Costigan  
370 Wickenden

James Deane  
S. L.

mit 2162  
cut set  
1/4" per ft.

Opened Oct. 25, 1877  
Closed " 26, 1877



Bower St.

Wickenden St.