

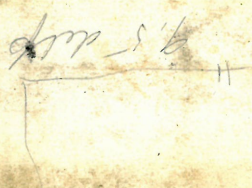
2-12
7-14
7-16
1-18

47
71
71

18.5 / 6 ayon

182

A suitable reward will be paid for
the return of this book, if lost, to
this office



17 June
24.4 K. 1911
303 6/10
130

Samuel Williams
and John Harter
#198 ~~106~~ Broadway
J. A. Blackmar
D. L.

Permit # 1438.
Cup at curb 9.3

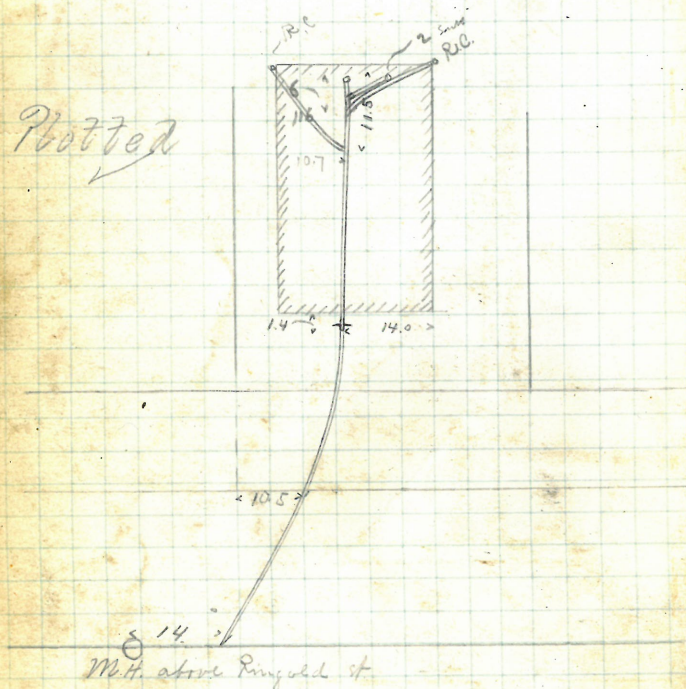
Opened Mar. 27 1876

Closed April 5 1876.

Reopened & Closed Jan'y 11-1900

J. L. Read D. L. - Cleburn

Plotted



Broadway

7. A. Randall
Vice Jackson #223 Washington St
J. R. Brown
S. L.
Permit No 1439
Cut at cost 6.9

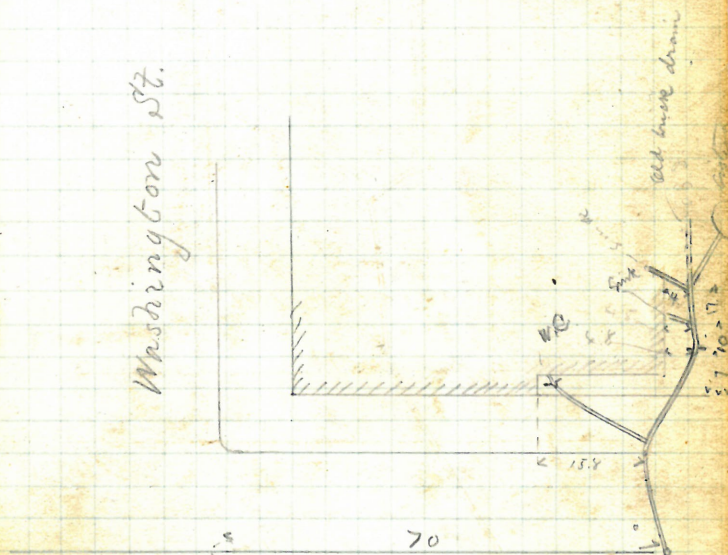
Reopened & closed Nov. 10, 1966
Cleanout - L.A. Blich D. S.

Received Sept. 29-1908

Closed. " 30-1908

N. W. Leolgrove D. L. - Blount -

Plotted



Jackson Street.

Removed
 Thomas Cosgrove
 73 Point St
 J. Frank Read
 S. L.

166

Permit 16/441
 cut at curb 9.9

opened Nov. 29 1896

Closed April 1 1896

Reopened Sept 13th 94

Closed Sept 13th 94

H. M. Goldpiece Inc

#166
Removed

Reopened June 20 93

Closed Sept 14

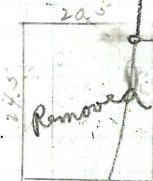
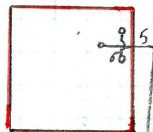
Reopened June 1

Closed June 2

D. J. Barabara

add gas sta

P. 16/12



33.75 West of M.H. just west
 Hospital st.

Point St.

Permit 101440
Cwt at cwt 9.6

Reopened & closed Apr. 12-1900
Geo. H. Lewis, D. D. ~

2-



Mr. H.

Removed

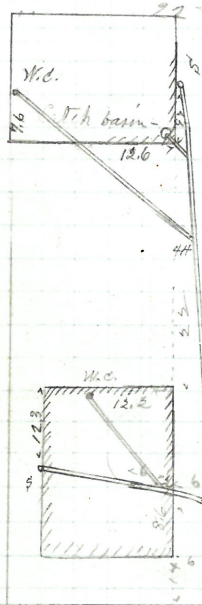
Thos McCabe

113-115 67 Lippitt of
A. W. Murr
D. L.

Permit 10 1442
Cut at Curt.

Opened Mar. 29 1876
Closed April 1 1876

Reopened Dec 21-1877 by James Gorman with out
Bloss 22-1877 P 20.77 e 2 ^{since} permit

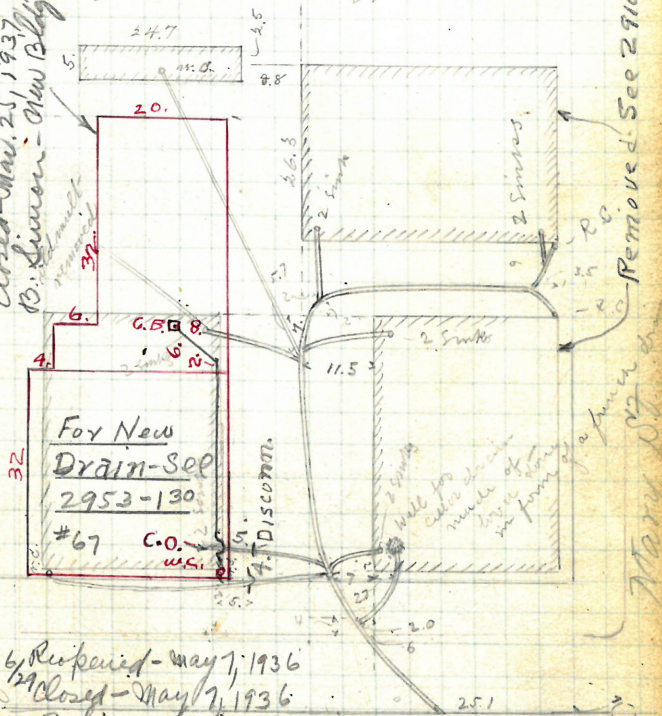


Opened Sept. 4 93
Closed Sept. 5 93
Sp. M. Hogg D. L.
2 Reopened Feb. 26, 1940
19 Closed Feb. 27, 1940
L. Blazer - Ch. Rocks
Remove Trap.

Lippitt St.

Permit W1443
Cut^v at cut. 10.9

Reopened - Mar. 24, 1937
Closed - Mar. 25, 1937
B. Simon - New Bldg.



6/29 Reopened - May 7, 1936
Closed - May 7, 1936
B. Simon - discon-
nect #67

Rec. 10/3/63
Closed 10/3/63 (See $\frac{3399}{166}$ for sketch.
D.L.J. Marandola

Borden Street

Chancel " 31-1900 -
E. M. & Lawrence O. L.

GONE

7 P Surfer

S.W. cor. Prairie Ave + Providence
7th P Surfer

D.L.

Permit 101490

Cut at curb 10.7

opened Mar 30 1876

closed April 4 1876

Reopened & closed: April 20 1885 by B. Bradg. &

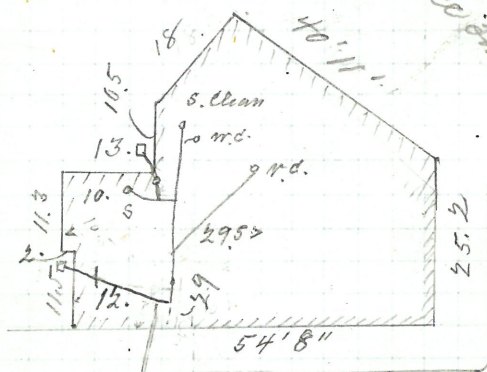
Reopened Dec. 23 1908

closed " 24 1908

M. Bateman D. L.

Plotted.

Providence Road



55. North of 2nd St. H. south of Prov. St.

Prairie Ave. —

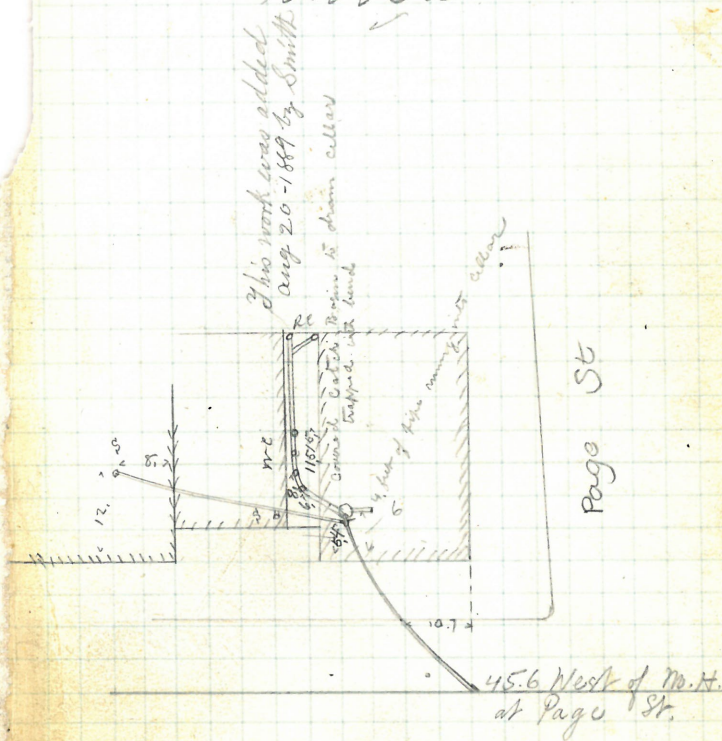
A. F. Palmer

1173-153 Pine St.
Acad. R. Lilly

Perm. No. 1445
Cris at curb 7.5

opened	April	1.	1876
closed	"	7.	1876
Extended	March	10.	1880
closed	"	16.	1880

Plotted -



Pine St,

170

7th 3rd Ross

S.E. cor. Governor & William
7th 3rd Ross

4/5.

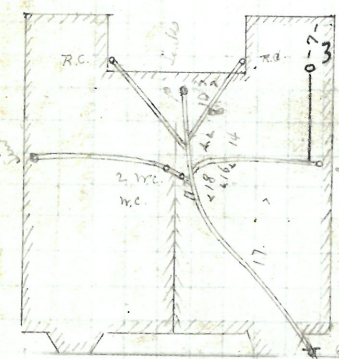
S. L.
Permit 10 1446
Ans at curb 7.4

opened April 3 1886
closed June 24 1886

9/8/38 Reopened June 13/38
Closed June 13/38
9. Di Petruillo D.L. Slottick
add stack

deepened 9-1-66 J. Kanner & L.
closed 9-2-66 open street
replace 3 pipes in street

Williams St



32.9 north of
M.H. at John.

Governor St.

Removed

15

Mary J. Gardner

222 Friendship St
John High
D L

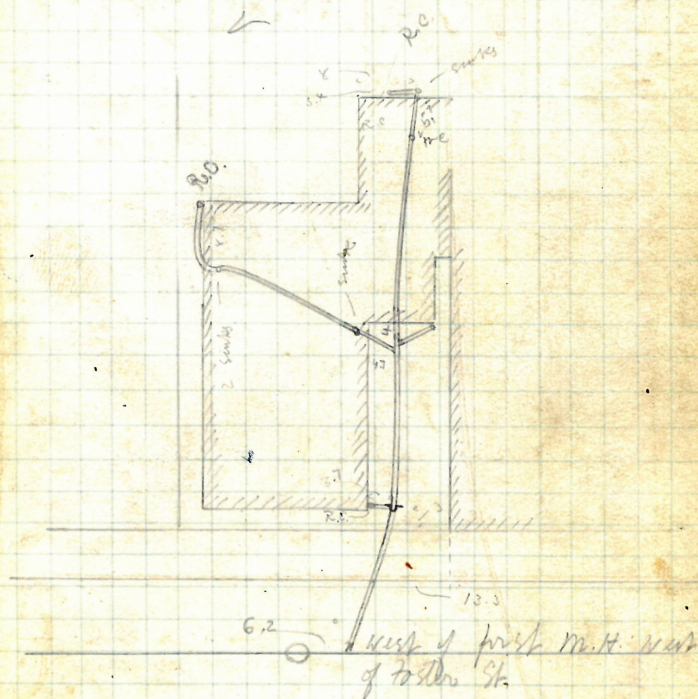
Permit No 1447

cut at curb 9.6

opened April 3 1876

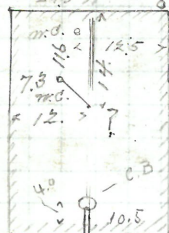
closed " 7 1876.

Plotted



Friendship St.

Removed

Michael McGarrahan
30 Lippitt street
a W. DriffPermit W. 1450
Oct 4 court 147Opened April 17 1876
Closed 21 1876

Reopened & closed Oct-5-191

H. W. Golding D. D.

Reopened Oct 30-1919

Closed 11 31-1919

M. Benedicelli D. D.

Pitted.

< 12.02 Blank I

< 9.5 27.0

4.7

22.0 East of 5th M.H.

Lippitt St.

17.
Philander Boney

101 Arnold St.

David W Boney

& L

Permit No 1448

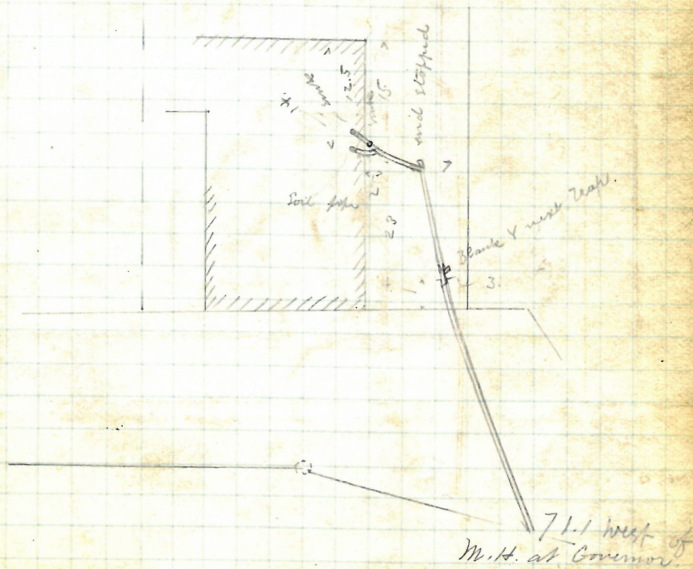
cut at curb.

opened April 5 1876

Closed " 10 1876

Plotted.

1



Arnold St.

L. S. Collins

7 Mathewson St.
Frank 14th Ave.S. L.
Permit No. 1452

Cut at curb 7.3

opened April 7 1906

closed " " 1906

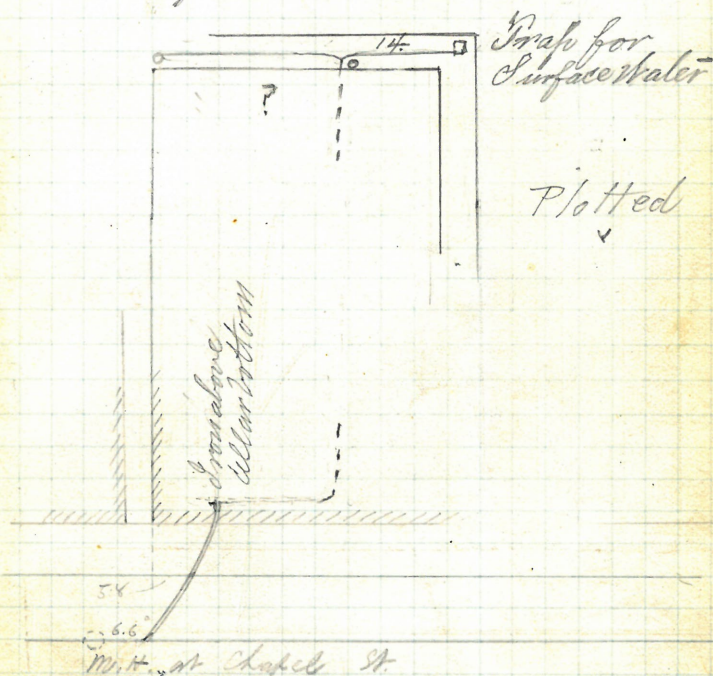
Reopened & Closed Apr. 27, 1908

L. S. Stevenson D. S.

Reopened Sept. 18-1917

Closed " 21-1917

R. Dupins D. S.



Mathewson Street.

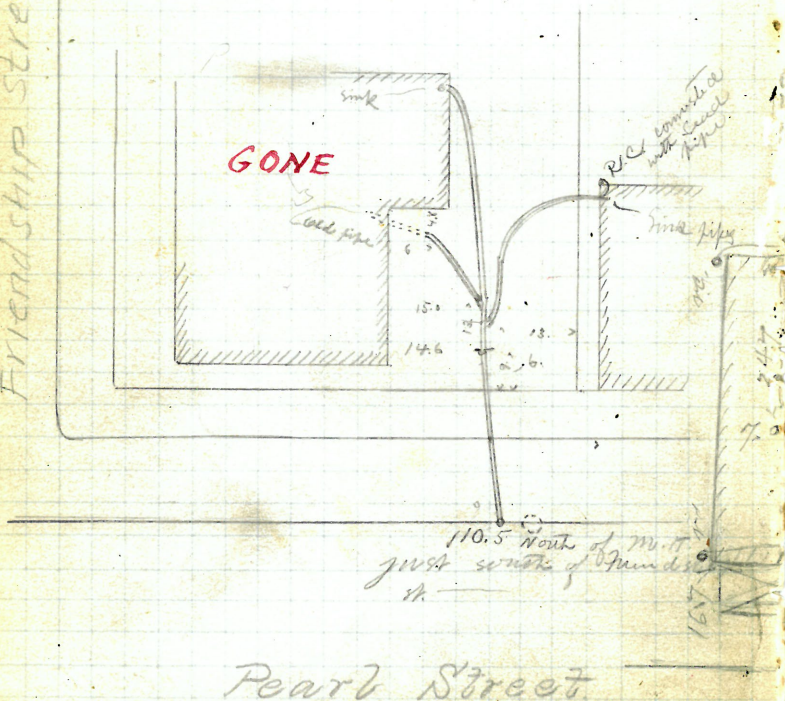
#389 James A. Packard
N.W. cor Friendship - Pearl
Asa K. Lilly
D. L.

Point 10 1453
CMT at curb 8.6

Open d April 10 1876
Closed " 15 1876

Plotted

Friendship Street



Pearl Street

Roaming
+ Estate of Marion
Barber
See 13K 100/52

Eliza King
167 Prospect St.
Asa K. Lilley
D. L.

Reopened Jun 27/
Closed " 30/36
O. Cohen char

Permit P 1499
Cmt of curb 9.2

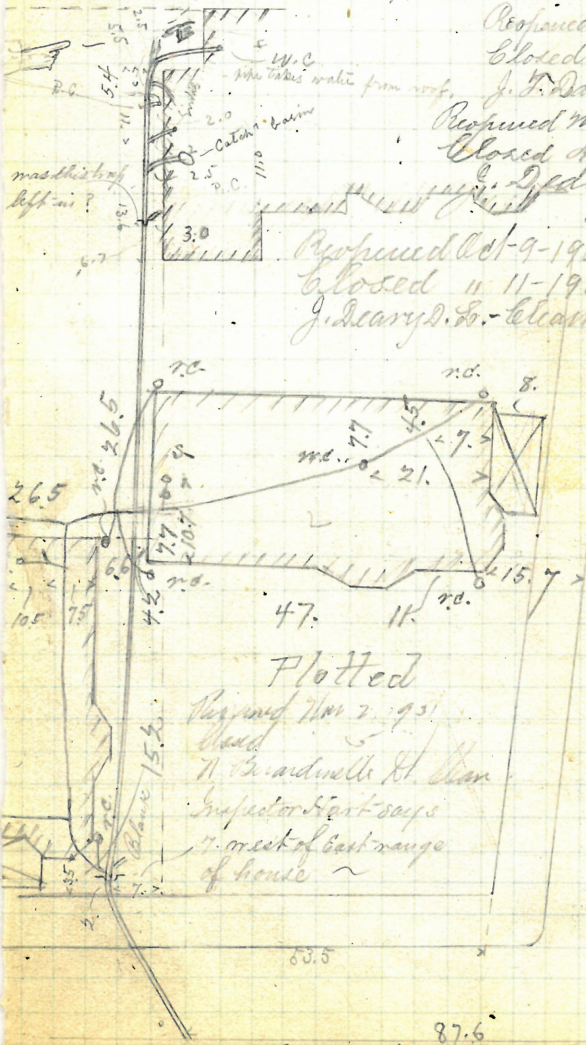
Opened April 10, 1876
Closed " 24 1876

Reopened July 24, 99
Closed Aug. 2, 99
J. F. Daniels D. L.

Reopened Mch 27-1908
Closed Apr 9-1908
J. Deary D. L.

Reopened Oct 9-1909
Closed " 11-1909
J. Deary D. L. - elephant -

Reopened June 2-1919
Closed " 3-1919
J. W. Seymour D. L.



Plotted
Reopened Nov 2, 93
Closed
H. Brandinelle St. Chan
Inspector Hart says
7' west of east range
of house ~

Prospect Street
Reopened - Apr. 27, 1936
Closed May 2, 1936
W. R. Rein - Relay - I. Cmt to
horse

Olney St. 87.6

22.

ID

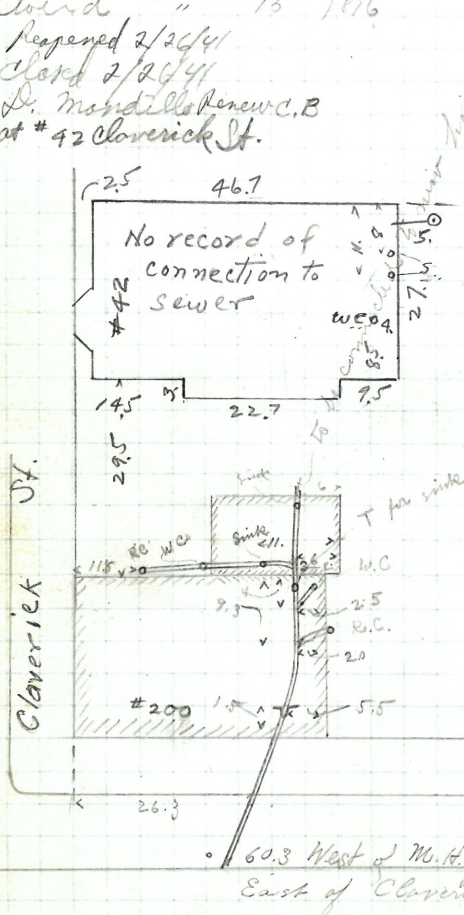
Remained

Mrs J. Manchester
200 Friendship
Frank Holden
S.L.

Permit No 1457
cut at curb 9.7

Opened April 11 1876
Closed " 15 1876

Reopened 2/26/41
Closed 2/26/41
D. Mandillo Renew C.B.
at #42 Cloverick St.



Friendship St.

Catherine Gleason

43 Carpenter Street

John O. Donnell

G. L.

Permit no 1459

Cur at curb 9.6

Opened April 12 1976

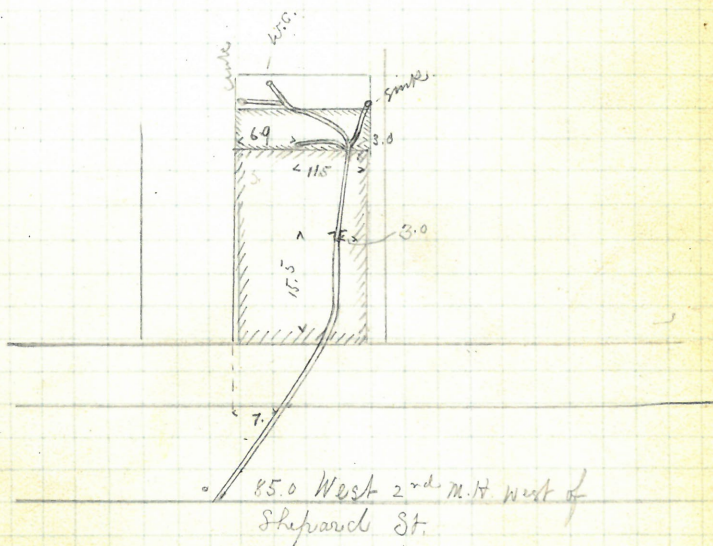
Chen d

14

196

opened to relay July 13/92 B Brant, D S

Plotted



Carpenter St.

D. 162-9

~~REMOVED~~

Harriet F. Pratt

219 Friendship St.

John Kough
S. L.

Permit No. 1464

City of Camb., 96

Open d April 13, 1876.

Closed 17, 1876.

Reopened Jan. 14-1923

Closed " 16-1923

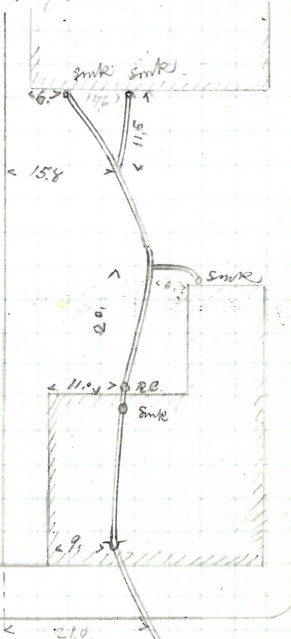
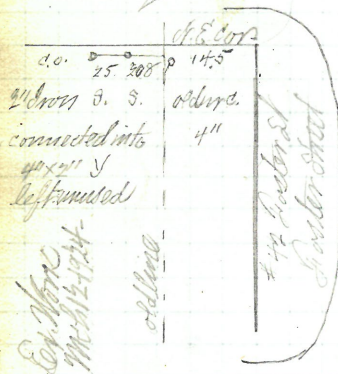
A. Hall & J. L. - Clemons

Reopened - Jan 3, 1931

Closed - Jan 5, 1931

J. Matgras

Pitted -

39.8' West of
M.H. below Foster

Friendship.

GONE

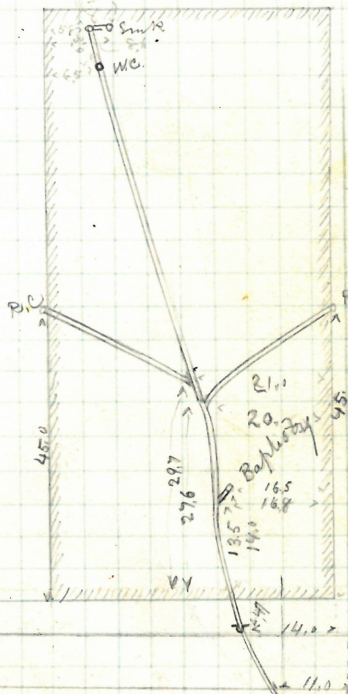
27.

Evangelical Advent Church
N. cor. Pearl and Providence Sts.
J. A. Blackmar
D. L.

Permit No 1463
Cut of Curb 9.5

opened April 14 1976
closed 19 1976

Plotted -



Providence St.

54.8 West
of M.H. at Providence

Pearl

Removed IP

#70. John Baxter
70 42 Lippitt St.
Abel W. Trapp
S. L.

Paint 10/14/77

Cut at curb 70' cut set

Opened April 21, 1876 Ram 1" grade 1"
Closed July 25, 1876 sewer in.

Reopened July 6, 1899 Reopened May 5, 1899

Closed " 7, 1899 Closed " 5, 1899

A. G. Allen D. S. - A. H. Holgrave D. S. -

Reopened Nov. 20 - 1912

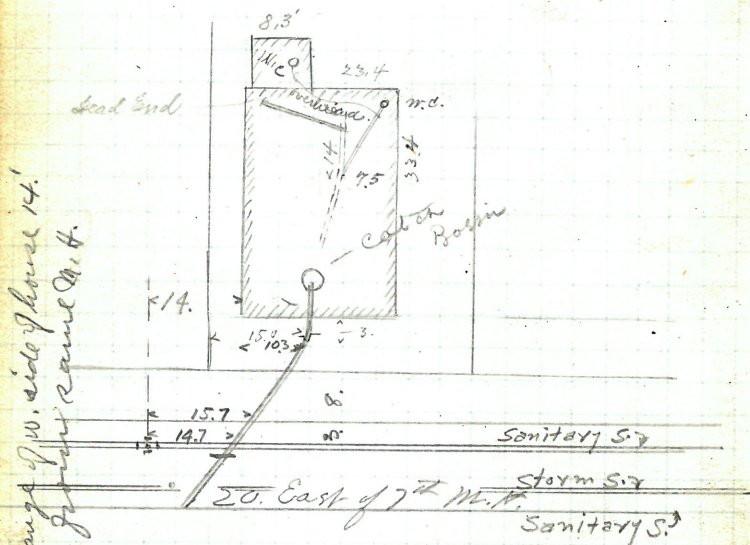
Bellevue " 21 - 1912

C. W. C. Congdon D. S.

Reopened - Sept. 28, 1936

Closed - Sept. 28, 1936

A. Wood - Dis. & Comm.



Lippitt Street.

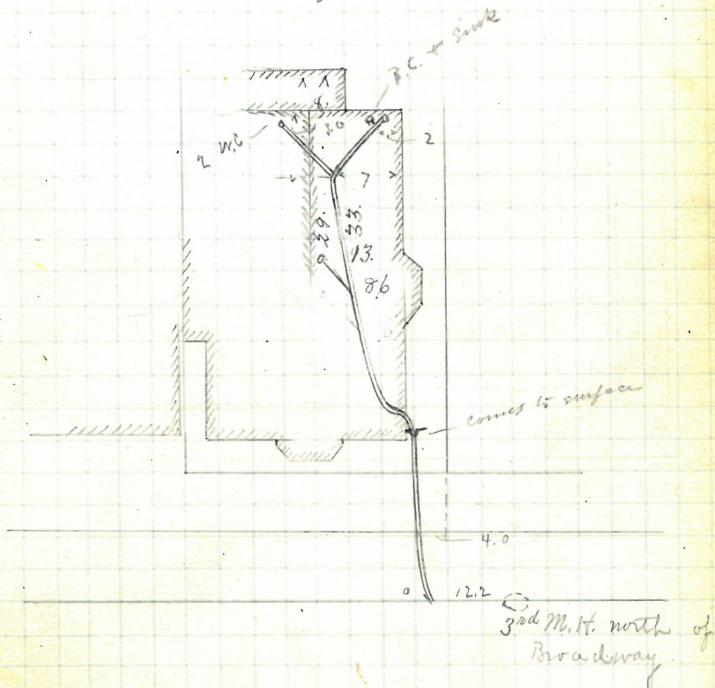
Enters sewer 14.7 E. from 1st W. H.
" " Bates St.

29.

Opened April 20 1886
Closed " 27 1886

Referred Feb 21-1924
Closed " 21-1924
Juli Maryo S. L.

Plotter ✓



Vinton Street.

Charles H. George

467 Pine st W. Cor. Somerset

Asa K. Lilly

D.L.

Permit No 1467

cut at curb. 10.6

Reopened 5/29/59

Closed 5/29/59

D.L. R. Trotta

clear.

Opened April 24 1976

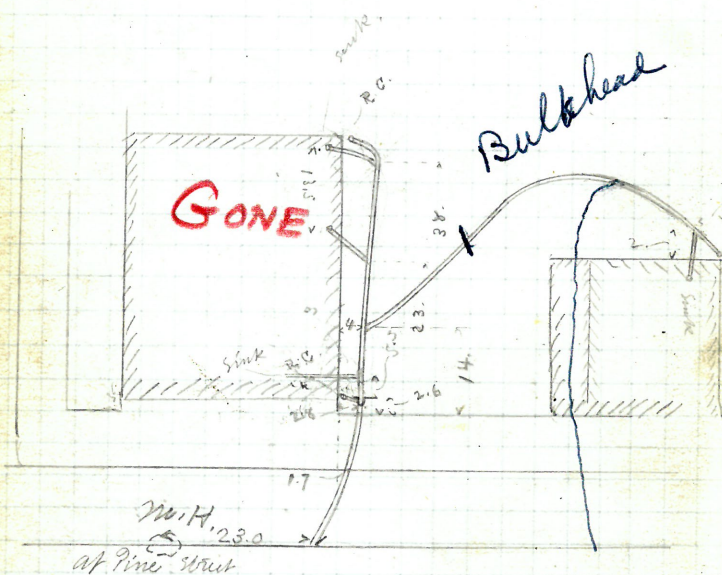
Closed May 6 1976

Sec BK. 3222

15

for # 41 Somerset

Plotted



Somerset St.

Removed

31

Patrick W. Baxter

69-71 41 Lippitt St

Reopened - June 19, 1933

Closed - June 19, 1933

L. Katzman - clear at trap

Permit W 1476
cut at curb

Opened Apr 24 1876

Closed " 26 1876

5 Reopened - May 16, 1944

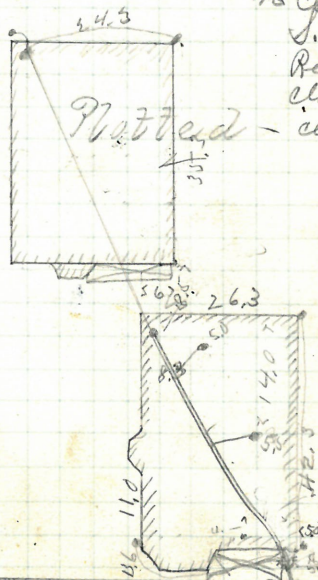
16 Closed - May 16, 1944

J. Blazes & Clear

Per Dec 10 1947 12/1/47

clo Dec 10 1947

clear R. Gorman P.L.



20 East of the 7th St. H.

Lippitt Street

Geo. W Bowen

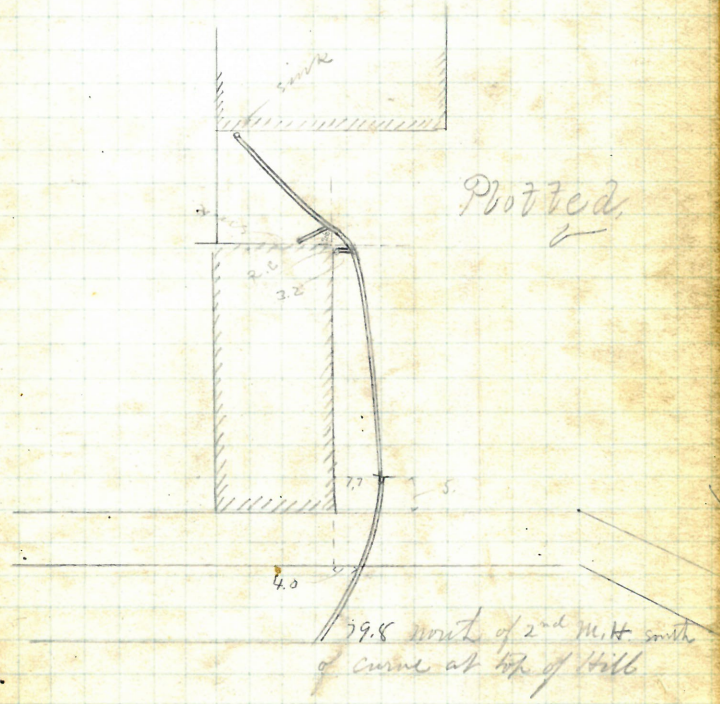
23 Haves St

John Keogh
D L

Permit W 1480

cut at curb 10.2

Ground Ape 25 1876.
closed " 26 1876.
Refined May 17-1879
Closed " 19-1877 by James Gorman W
Reopened May 1910 clean out-
Closed " 3-1910
Th Miller D.L. - All above -



Haves Street.

Harriet N. Baker
133 ~~14~~ Sutton St.

John B. Bradley
S. L.

Permit No 1488

City of Camb 10.0

opened Apr 26 1876

Closed May 2 1876

Reopened July 19-1912

Reopened 2/20/56

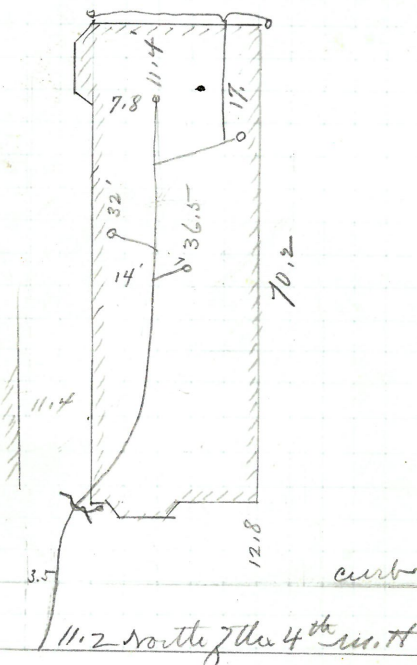
Closed 11-20-1912

Closed 2/20/56

Geo. F. Lewis D.L.

25.2 D.L.M. Rossi. Remove Trap +

Clear.



Sutton St.

J. C. Wood

Cor. Broadway & Bradford

John A. Bonnell

Permit No. 1145 B

cut at

opened Apr. 26. 1916

closed 28. 1916

Resurveyed June 16-18-1902

By H. H. Chadsey D. L.

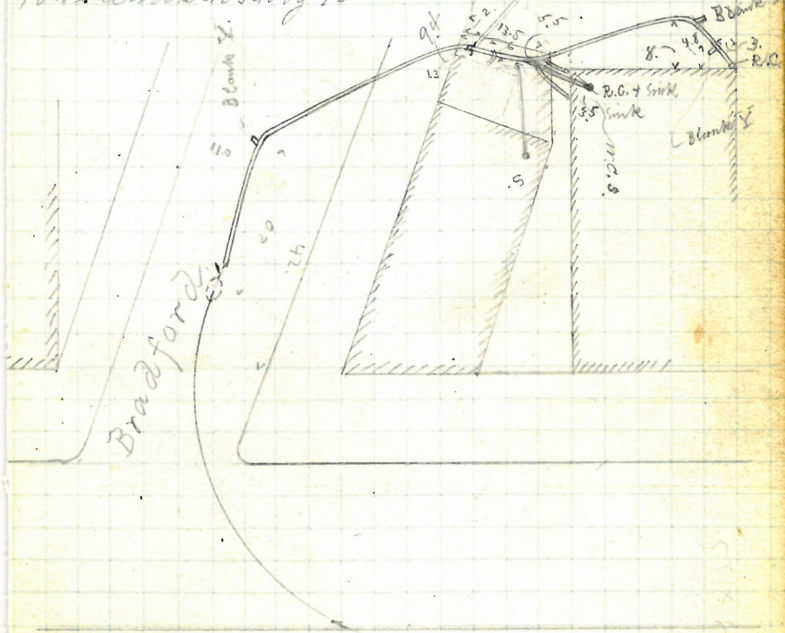
Resurveyed July 10-11-1902

By H. H. Chadsey D. L.

For Ex. Work done Plotted.

under this Permit Nov. 14-16

1904 see Book 46545 pg 90-



Broadway

REMOVED

St. Johns Church

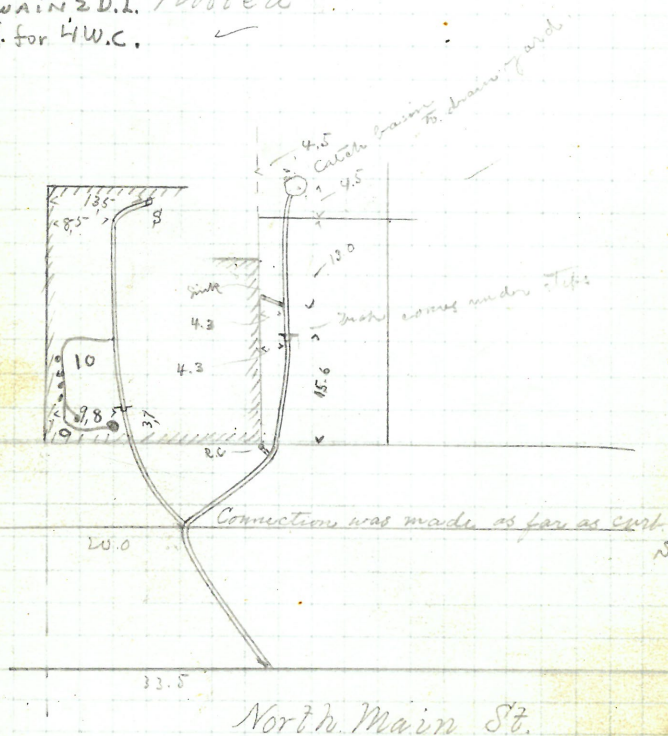
273 + 277 10 main st
mm and runs + 50S. L.
Permit No. 1486
Cut at curb

opened April 16 1876

Closed 29 1876

Reopened May 6 1880

Closed " 11 1880

Reop July 20 1880
Close July 20 1880
E. Swain & D.L. plotted
Add. for H.W.C.

GONE

to W. Harris

142 Carpenter St

Solomon Thornton

J. L.

Permit No. 1487

Cost^v at curb 10.0

Opened April 27 1876

Closed May 1 1876

Reopened: 24th P. - 1884. J. A. Blackman

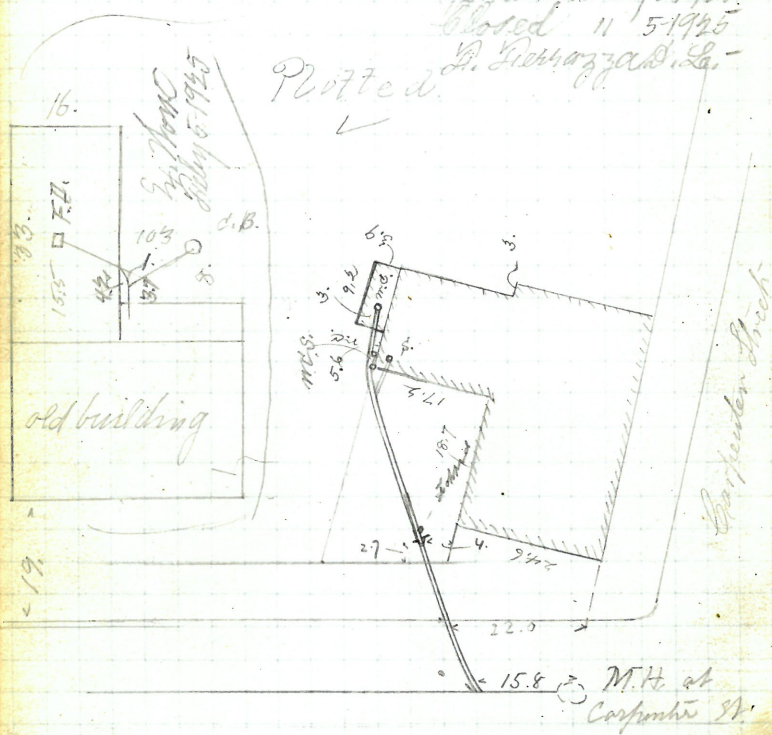
Reopened & closed Jan'y. 28, '96 - Geo. H. Lewis D.D.

Revised July 5, 1925.

Closed 11 5-1925

L. Perazza & L.

Noted



Knight St.

REMOVED

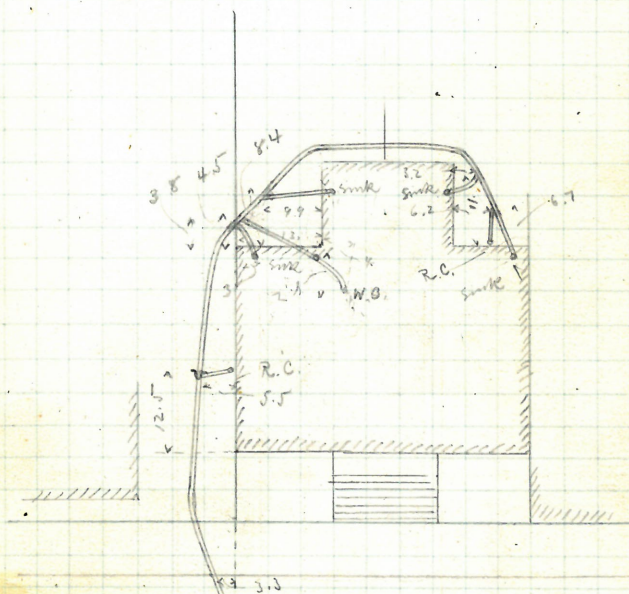
39.

Maria Wheaton
#159 129 + 134 Pond St
J. A. Blossman
D. L.

Permit No 1492
Cut at curb 10:1

opened April 27, 1896
closed May 2, 1896

Plotted.

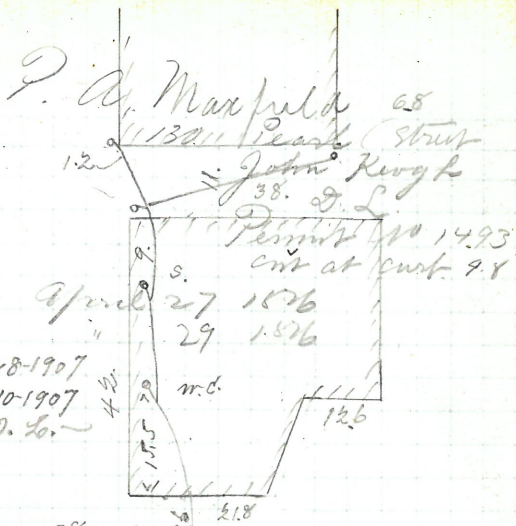


12.6 West of M.H. West of Young St.

Pond Street

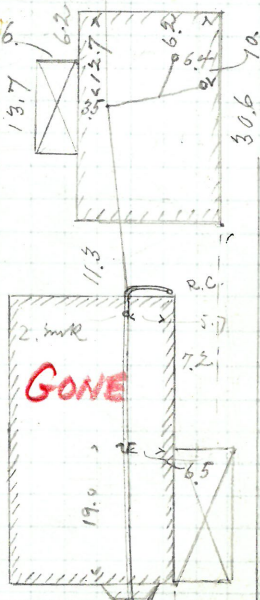
BLDG. 1
145 1/2
REMOVED

Opened April 27 1876
 Closed
 Reopened Jan 8-1907
 Closed " 10-1907
 W. F. Chadwick & Co.



Plotted

145 1/2



GONE

102.1 North of 2nd m. l.
 south of Prairie Ave.

Pearl St.

Heirs of W. R. Danforth

172 Benefit St

J. Frank Read

S. L.

Permit No 1494

cut at curb 6.7

Opened April 27 1896

Closed " 29 1896

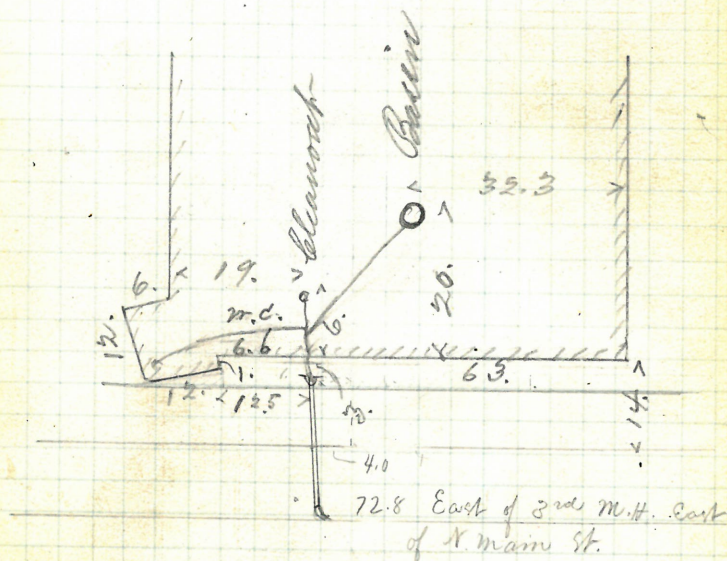
Reopened Jan 24-1907

Closed " 25-1907

Wm. H. Gogarty S. L.

Plotted

✓



Meeting St.

Chas G. King

41 Waterman St

John W. Briggs

D. L.

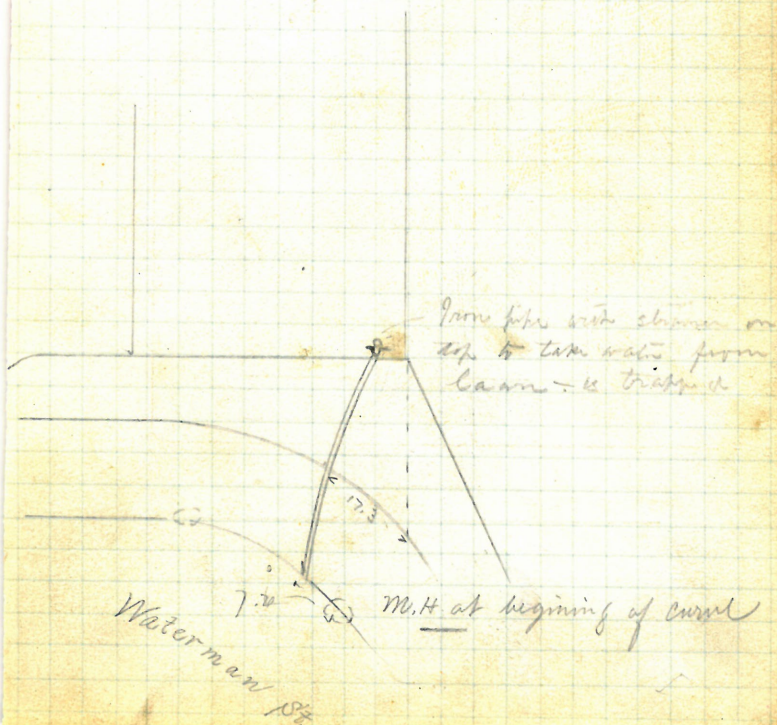
Permit 10 1498

Cut at curb 7.2

Opened April 28 1876

Closed May 2 1876

Plotted



GONE

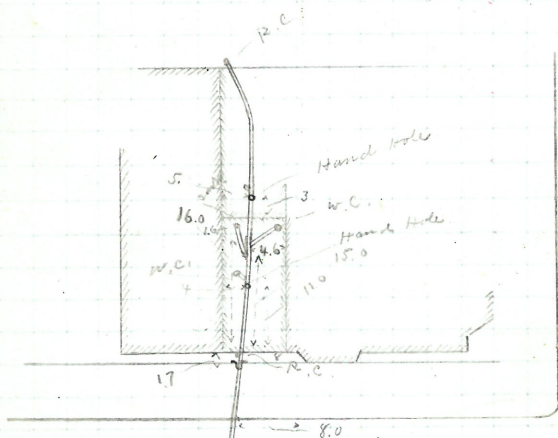
S. cor. Pine and Pearl sts
Jm French

D. L.
Permit No 1502
Cut at curb 7.2

Opened May 1. 1876
Closed " 9 1876

Ex. issued 12/11/42 for
work on drain # 72
See 342-126

Plotted -



76.8 North of W.H. north of Fundus

Pearl St. —

Michael Campbell
46 Walling St.

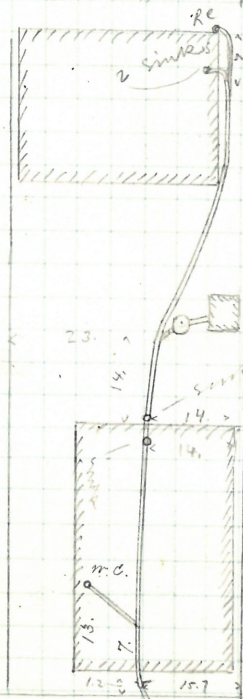
John King L.

Permit No 1504

Cut at curb 9.2

Opened May 2, 1876

Closed " 4, 1876.



Opened to extend May 23 1877

Closed " 24 "

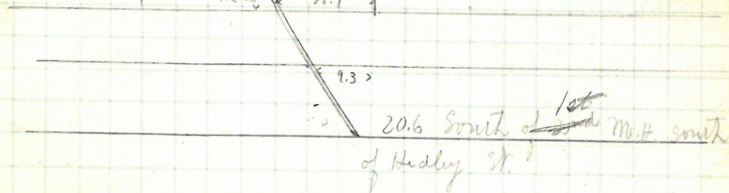
John King D.

Reopened May 18-1886

by B Brady D.

Noticed - -

Reopened & closed for 9076
H. M. Laundry D. L.



Walling St.

HOUSE #16 GONE

Sam'l B. Swan
12 + 16 Arch St
John W. Briggs
D.L.

Permit nos 1495 + 1496
cut at curb 9.7

opened May 3 1896 9.6
closed 11. 1896.

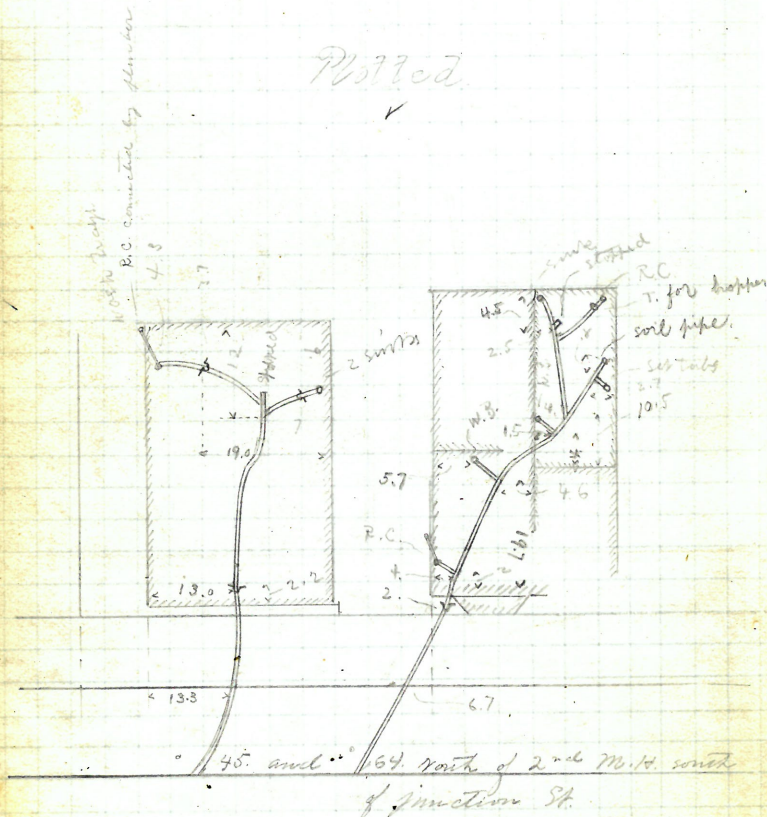
Reopened Aug. 25-1926

closed 11. 25-1926

M. McCallister, S. Belmont

Plotted

V



Arch St.

Removed

49.

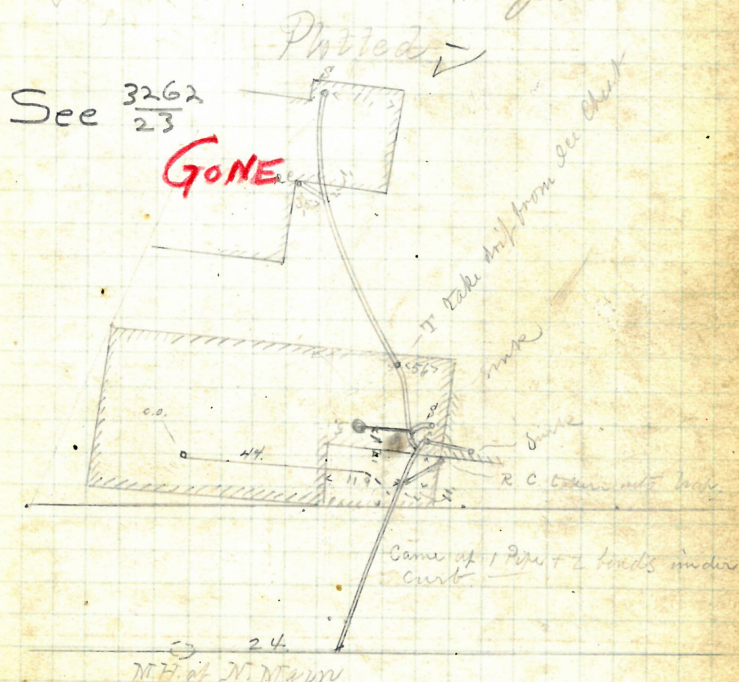
William J. Dexter
579-58th Main Crs. Lippitt + S. Main
A.W. Triff
B. L.

Permit N 1512
Cmt. at cert. none set

Opened May 5-1876
Closed " 11-1876
Opened to Extend Aug 25-1876
Closed " 26-1876

Reopened July 26, 1927
Closed " 26, 1927
L. Katzman St.

Reopened Dec. 16, 1931
Closed " 17, 1931
L. Katzman St.

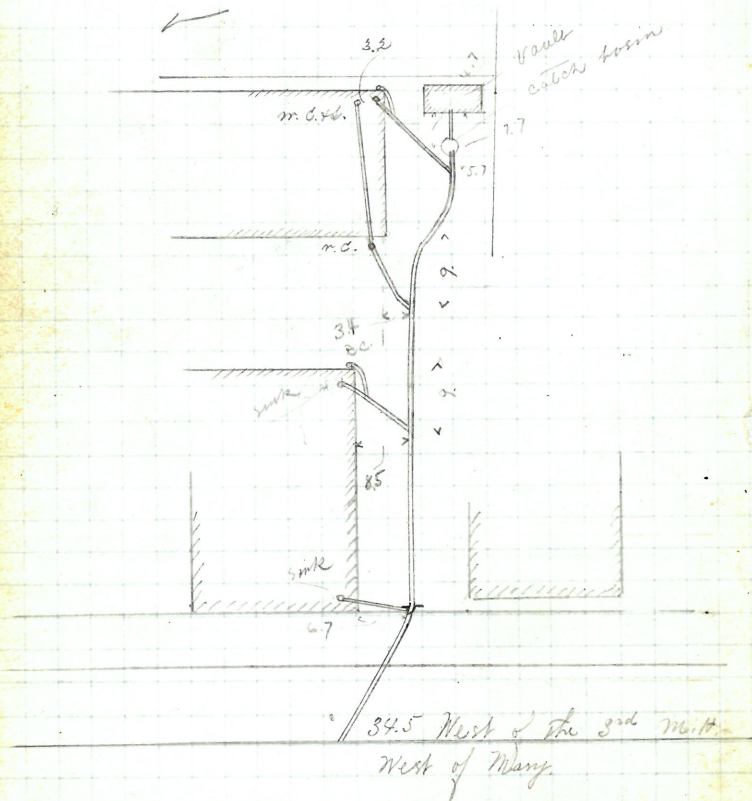


Lippitt St. -

Bernard Byrne
 174 Crary street
 A. K. Lilly
 D. L.
 Permit N° 1432
 cut at cut, 10.3

Opened May 7, 1876.
 closed " 15, 1876.
 Reopened & closed Aug. 16, 98.
 E. D. Lyons D. L.

Plotted. -



Crary St.

John Salisbury
85 South Street
Solomon Thornton
D. L.

Permit N 1516
cut at curb, 7.83

opened May 7 1916.
closed. 12 1916.

Reopened Mar 28 1946

closed Mar 28 1946

acid line & Remyth 1946

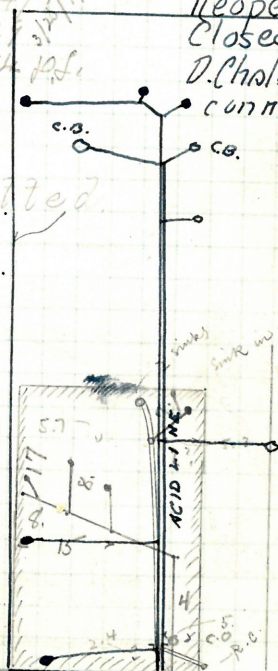
Reopened 8/16/54

Closed 8/17/54

D. Chalmers - new bldg -
connection in old line

Plotted.

SEE
RETURN



South Street

P. 169

17

J. E. Crandall
27 Arch Street
J. Frank Road
S. L.

Permit No. 1521

Cut at curb. 10.0

Opened May 11, 1876

Closed " 15 1876

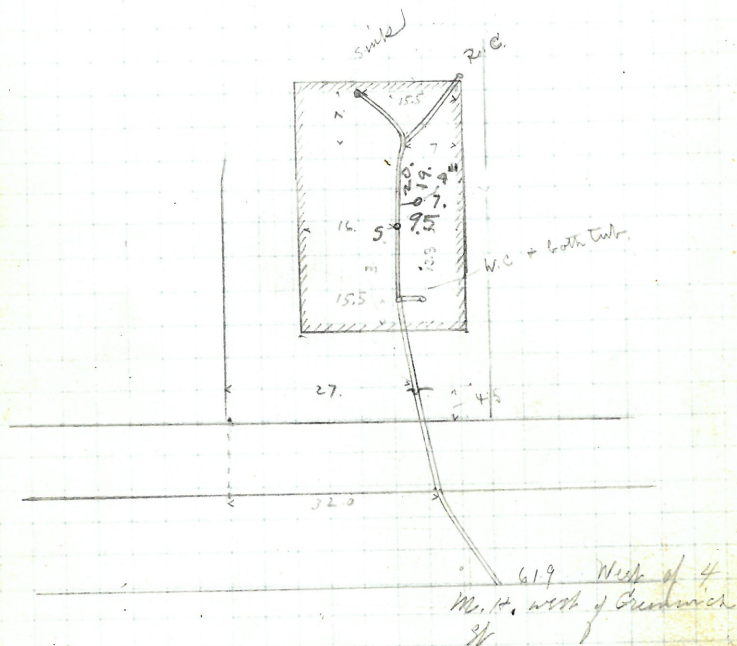
4 Reopened - Apr. 21, 1939

20 Closed - Apr. 21, 1939

M. K. Atamian - add 4"

Plotted

✓

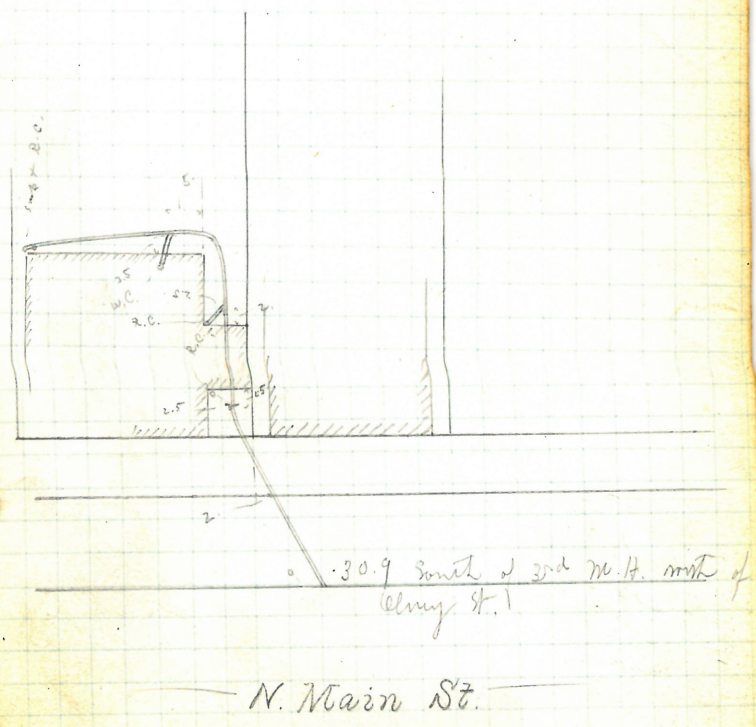


Arch St.

Asahel Hawkins
516 N. Main St.
abel N. B. B. L.
Permit No 1524
Cut at curb 9.0

opened May 11, 1916.
closed 17, 1916.
Reopened May 1- 1919
closed 1919
W. Doherty & S. Clemond

Plotted
✓



Michael Carter

54 Lockwood St

106

John Rought

D.L.

Permit No 1534

Cut at curb 7.3

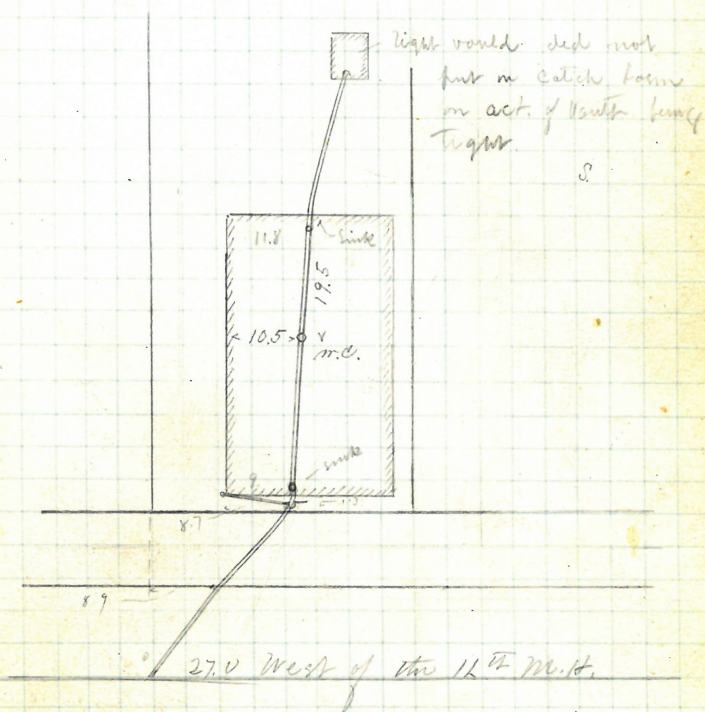
Opened May 13, 1976

Closed " 15, 1976.

Reopened & closed Oct. 8, 1977 - J. F. Daniels D.L.

Pitted.

↓



Lockwood St.

REMOVED

Mathew Campbell

71-69 South Street

Jason A. Blackburn
S. L.

Permit No 1533

Cut at curb

Opened May 13, 1876

Closed " 17, 1876.

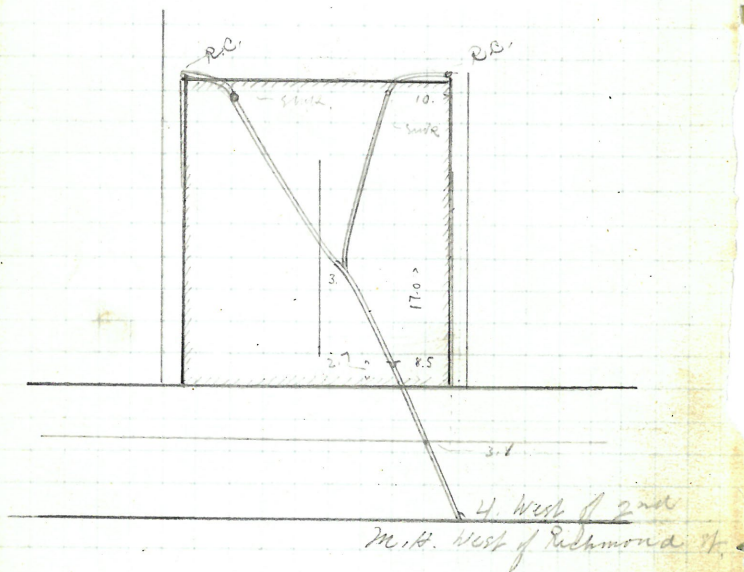
Reopened " Mch 16-1905

Closed " 18-1905

W. H. Chadsey, D. L. - Clearcut

Plotted

✓



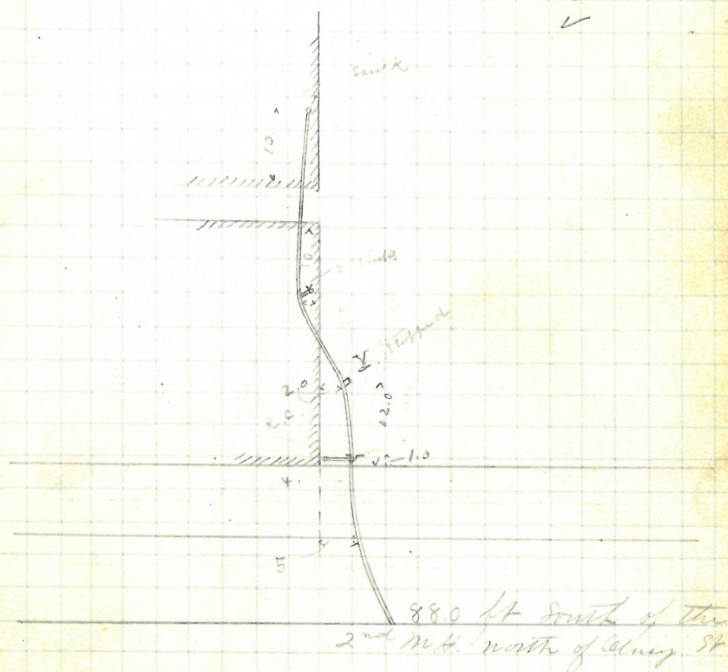
South St.

Steven M. Greene
 W W. Cobb Colony + No Main St
 Abel W. Dupp
 S. L.

Permit No 1546
 Cut at cut 11.0

Opened June 1 1876.
 Closed " 3 1876.

Plotted.



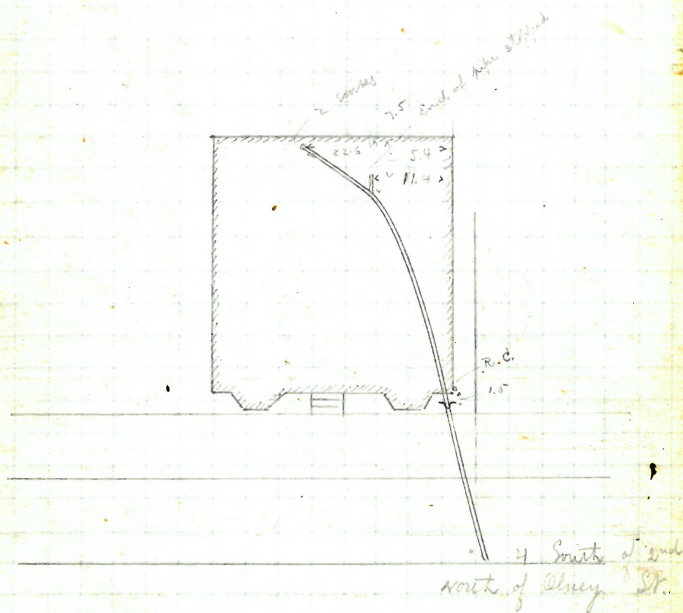
North Main.

Stevin M. Greene
 508 N. Main St.
 A. W. Tripp
 S. L.

Permit No 1545
 Cut at curb

Opened May 19, 1916
 Closed " 23, 1916

Plotted.



N Main St.

REMOVED

Pringaman v Ham
174 Clifford St

174 Clifford St

Thos Phillips & Co.
S. L.

22

Permit N 1547

Cur of curb, 8.9

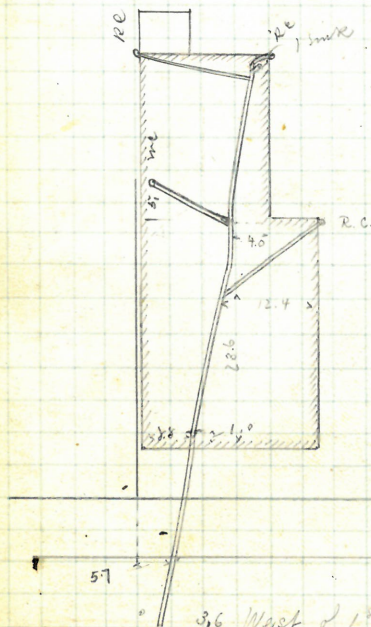
Opened May 20, 1886

Clusia 27. 1896

Received June 25 - 1878

Colored " 26-1872

Plotted.



Clifford St.

Removed

Charles A. Hubbard

208 new

178 Cranston St

enter on Lester st

Spined 22 of May 1976. J. Frank Read

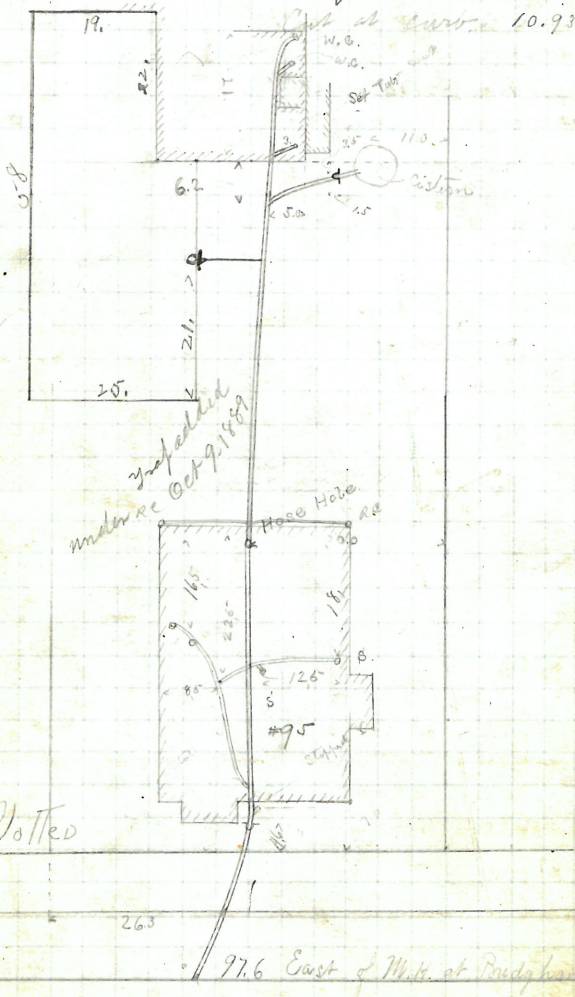
Closed. 25' " 1876

Reopened 16 Dec - 1884 Permit No 1532

Reopened Mar 27, 1928

H. Dupuis-D. L.

F. Dupuis-Del.



Reopened mch 29-1911
By J. Leary S. L. - Cleavert.

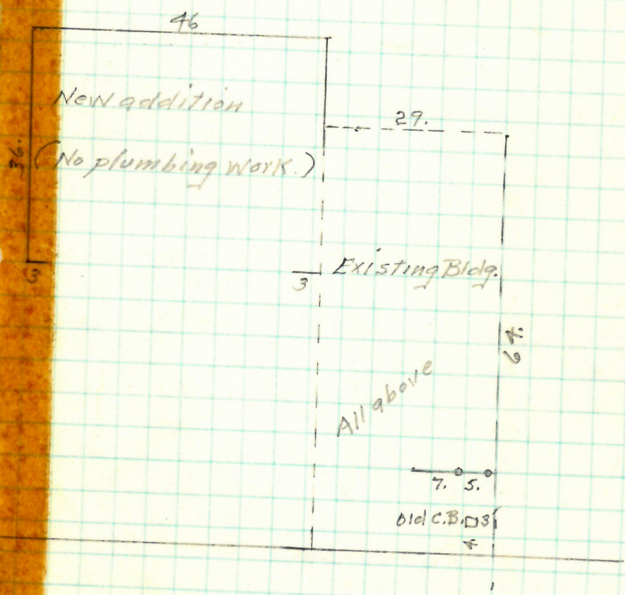
Br. J. Sears & Co. - Clearcut.

Potted

Lester St.

X 1548
opened 3/30/62
closed 4/2/62
4" Iron.

60
OWNER
Jane Cox
150 Point St.
D.L. J. Colavecchio



Point St.

16.
121 M. H. East
of Hospital St.

Point St

A. F. Adler
85-87. + 91 Washington St.
Solomon Plummer
J. L.

Permit No 1554

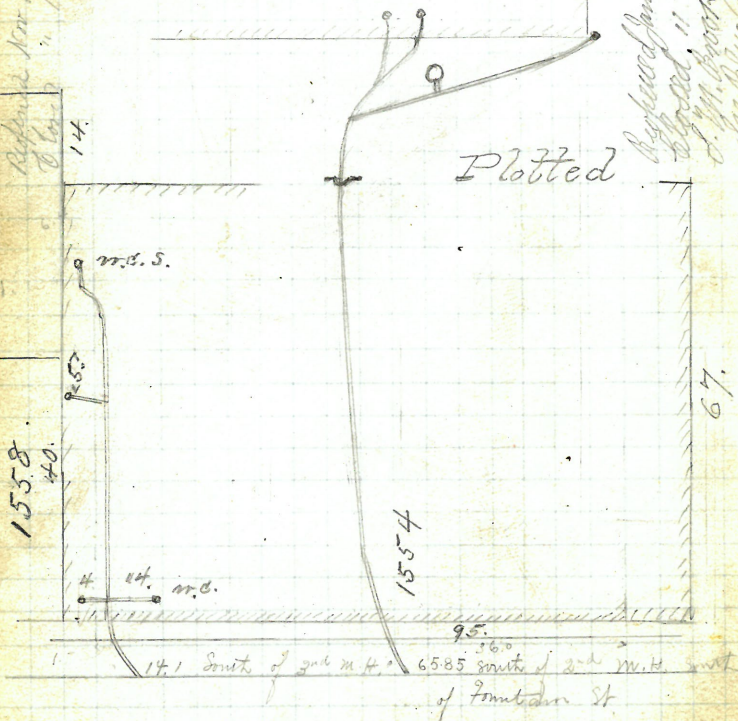
Cut at curb 7.2 feet

Opened May 24 1876
Closed " 29 1876
Reopened Oct 21 - 1878 John W. Hall
Closed " 21 - 1878 to Clement
Extended June 12 - 14 1881
Sol. Plummer

Reopened Nov. 6 - 1905
Closed " 13 - 1905
Th. E. Dannenfort - D. L.

Reopened Nov 10 - 1878 to Clement
Closed " 10 - 1879 by J. W. Hall

Reopened Jan 5 - 1922
Closed " 15 - 1922
O. W. Plummer & Co.
See Plummer



Clemence St.

Michael McElmud
SW Cor. of Walling & West River St. #67
John Keogh
D.L.

Cut at curb 9.3

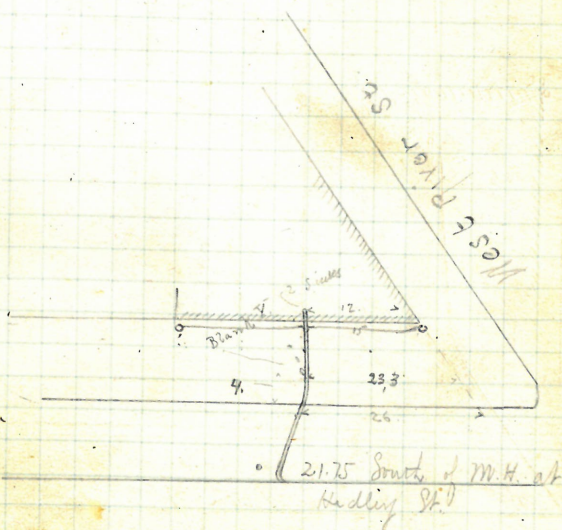
Permit No 1553

Opened May 24, 1876

Closed " 25, 1876

Reopened & Closed Aug 29, 1935 J. D'Amario add RC.

Plotted -
L



Walling St.

REMOVED

Charles Law

145 Pond Street
Patruick, Black
D. L.

Permit No 1562

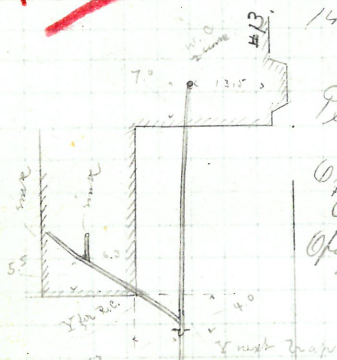
Cut at cont. 11.3

Opened May 29 1876

Closed June 7 1876

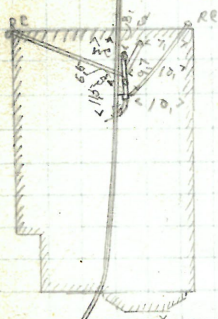
Opened to Extend Oct 24 1876

Closed Oct 24 1876



Pitted.

V



12

East of M.H. at winter St

Pond St.

14 Reopened - Oct 18, 1939
 15 Reopened - Jan 18, 1939
 16 Closed - Oct 18, 1939
 17 Reopened - Jan 19, 1939
 18 Closed - Jan 19, 1939
 19 Reopened - Jan 19, 1939
 20 Closed - Jan 19, 1939
 21 Reopened - Jan 19, 1939
 22 Closed - Jan 19, 1939
 23 Reopened - Jan 19, 1939
 24 Closed - Jan 19, 1939
 25 Reopened - Jan 19, 1939
 26 Closed - Jan 19, 1939
 27 Reopened - Jan 19, 1939
 28 Closed - Jan 19, 1939
 29 Reopened - Jan 19, 1939
 30 Closed - Jan 19, 1939
 31 Reopened - Jan 19, 1939
 32 Closed - Jan 19, 1939
 33 Reopened - Jan 19, 1939
 34 Closed - Jan 19, 1939
 35 Reopened - Jan 19, 1939
 36 Closed - Jan 19, 1939
 37 Reopened - Jan 19, 1939
 38 Closed - Jan 19, 1939
 39 Reopened - Jan 19, 1939
 40 Closed - Jan 19, 1939
 41 Reopened - Jan 19, 1939
 42 Closed - Jan 19, 1939
 43 Reopened - Jan 19, 1939
 44 Closed - Jan 19, 1939
 45 Reopened - Jan 19, 1939
 46 Closed - Jan 19, 1939
 47 Reopened - Jan 19, 1939
 48 Closed - Jan 19, 1939
 49 Reopened - Jan 19, 1939
 50 Closed - Jan 19, 1939
 51 Reopened - Jan 19, 1939
 52 Closed - Jan 19, 1939
 53 Reopened - Jan 19, 1939
 54 Closed - Jan 19, 1939
 55 Reopened - Jan 19, 1939
 56 Closed - Jan 19, 1939
 57 Reopened - Jan 19, 1939
 58 Closed - Jan 19, 1939
 59 Reopened - Jan 19, 1939
 60 Closed - Jan 19, 1939
 61 Reopened - Jan 19, 1939
 62 Closed - Jan 19, 1939
 63 Reopened - Jan 19, 1939
 64 Closed - Jan 19, 1939
 65 Reopened - Jan 19, 1939
 66 Closed - Jan 19, 1939
 67 Reopened - Jan 19, 1939
 68 Closed - Jan 19, 1939
 69 Reopened - Jan 19, 1939
 70 Closed - Jan 19, 1939
 71 Reopened - Jan 19, 1939
 72 Closed - Jan 19, 1939
 73 Reopened - Jan 19, 1939
 74 Closed - Jan 19, 1939
 75 Reopened - Jan 19, 1939
 76 Closed - Jan 19, 1939
 77 Reopened - Jan 19, 1939
 78 Closed - Jan 19, 1939
 79 Reopened - Jan 19, 1939
 80 Closed - Jan 19, 1939
 81 Reopened - Jan 19, 1939
 82 Closed - Jan 19, 1939
 83 Reopened - Jan 19, 1939
 84 Closed - Jan 19, 1939
 85 Reopened - Jan 19, 1939
 86 Closed - Jan 19, 1939
 87 Reopened - Jan 19, 1939
 88 Closed - Jan 19, 1939
 89 Reopened - Jan 19, 1939
 90 Closed - Jan 19, 1939
 91 Reopened - Jan 19, 1939
 92 Closed - Jan 19, 1939
 93 Reopened - Jan 19, 1939
 94 Closed - Jan 19, 1939
 95 Reopened - Jan 19, 1939
 96 Closed - Jan 19, 1939
 97 Reopened - Jan 19, 1939
 98 Closed - Jan 19, 1939
 99 Reopened - Jan 19, 1939
 100 Closed - Jan 19, 1939

GONE

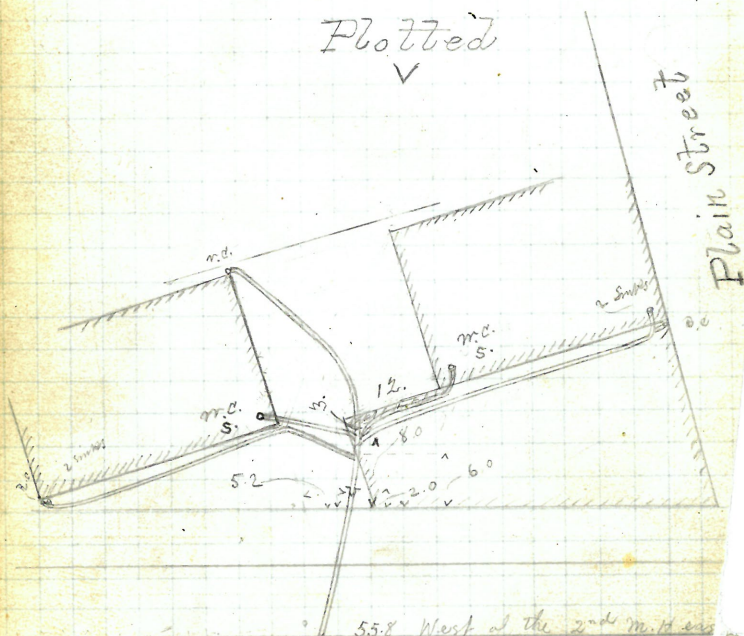
Estate of Thomas Rogers
 #116-118 S. E. cor. Plain and Borden St #84-88
 James Brady
 D. L.

Permit No 1561

Cut at cut 10.4

Opened May 30 1896	Reopened Nov 2-98
Closed June 5 1896	Closed Nov 4-98
Opened to Extend July 3-1897	H. W. Goldbeck D. L.
Closed " 3-1897	Reopened Nov 28-191
Reopened Jan 28-1903	Closed 191
Closed " 1 29-1903	B. J. Musser D. L.
J. F. Heenan D. L.	Cleanout

Plotted



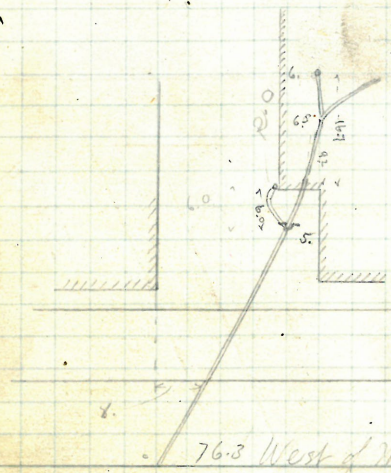
Borden St.

W. E. Lovegrove
No 22 Arch St
John W. Briggs
D. L.

Permit No 1568
Cut at curb 9.9

Opened May 31, 1896
Closed June 5, 1896
Reopened April 4, 1893
Closed March 4, 1893 C. R. Blackman & S.

Plotter
✓



76.3 West of M.H. just
East of Junction St.

Arch St. —

Funch + Mackenzie

S.W. + N.W. ^{#62-63-67} Cor. Friendship + Eddy Sts 167-175.

Henry F. Malson

D. L.

Permit Nos 1571-161

Cuts at curb see below -

Opened June 1 1876

Closed " 3 1876

Opened to Egan Oct 6 - 1877

Closed " 6 - 1877

Reopened June 18 - 1880

Closed " 22 - 1880

to Nov 21 - 1881

Reopened " 23 - 1881

Reopened Sept 19 - 1900

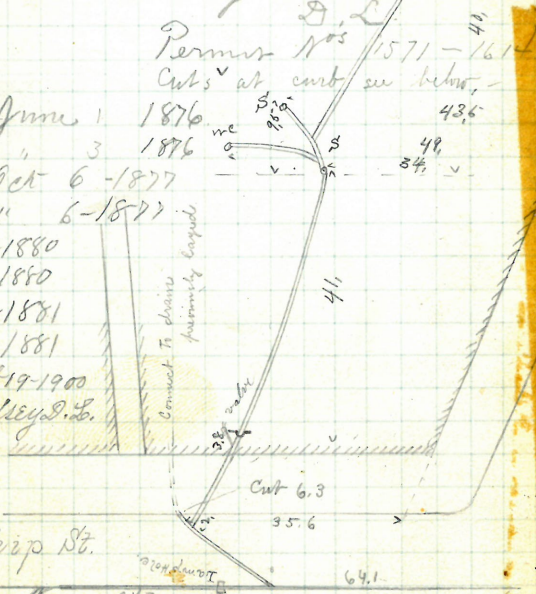
By H. N. Chadley D. L.

Friendship St.

Eddy St

Plotted

Reopened Aug 22/30
 by M. Nally D. L.
 amount



Funch & Mackenzie

S.W. + N.W. ^{#62-63-67} Friendship + Eddy Sts 167, 475.

Henry F. Mason

D.L.

Permit Nos 1571-1611

Cut's at carb. see below.

Opened June 1 1876

Closed " 3 1876

Opened to Emission Oct 6 - 1877

Closed " 6 - 1877

Reopened June 18 - 1880

Closed " 22 - 1880

to Nov 21 - 1881

Reopened " 28 - 1881

Reopened Sept 19 - 1900

By H. H. Chadsey D.L.

Friendship St.

Eddy St

Plotted

Old Basin
AbandonedSigned Aug 22/35
W. M. Nally D.L.
Mason

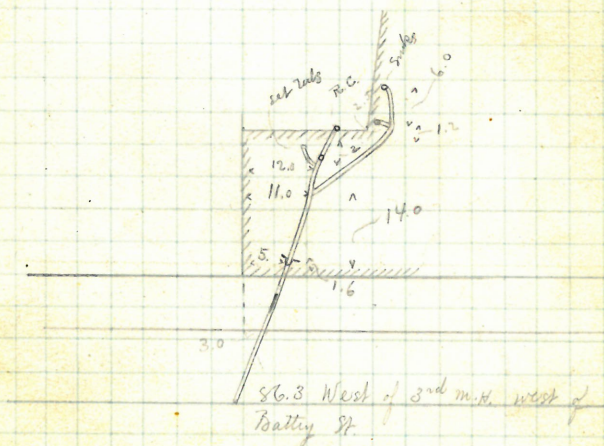
73.

119 Carpenter St.
Frank Holden
D. L.

Permit No 1575
Cut at curb 11.0

Opened June 1 1876
Closed " 5 1876

Plotted



Carpenter St.

HP. 162
10

75

102

Re. Oct 28/92
H. Rosen & L.
slung at gurb.
scribble

Kindall Mfg Co.
con. Friendship + Paige sts
John W. Briggs
D. L. 1995

Permit 1578 + 1579
Cut at cont. 7.0

Opened June 3 1876
Closed " 10 1876
Reopened Aug 19 - 1881
Closed " 20 - 1881
Reopened Oct 27 - 1883
Reopened Mar 24 - 1884
Reopened " 11 - 1885
Plotted -

For Ex Works done under
these permits July 20 - 94.
See Books 513 & 90

Reopened Sept. 28 1918
Closed 1918
J. J. Curtin D. S. Blamont
Reopened Nov 16 - 1926
Closed " 18 - 1926
J. M. Mearns D. S. Blamont



Friendship St.

E. Tallman

89 Pearl Street

Jason A. Blackburn

D. L.

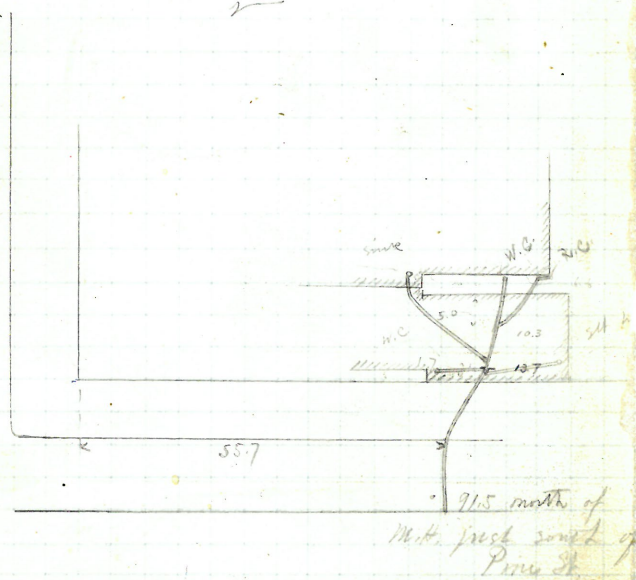
Permit No 1580

Cut at curb 6.2

Opened June 5, 1876.

Closed " 11 " 1876

-Plotted-



Pearl St.

GONE

77.

Ellen Mc Elroy

134 Charles Street

Patrick County

D. L.

Permit No 1584

cut at cut 9.2

Open June 6 1916.

Closed " " 9 1916.

Reopened & closed June 23 1917 - J. Deary D. L.

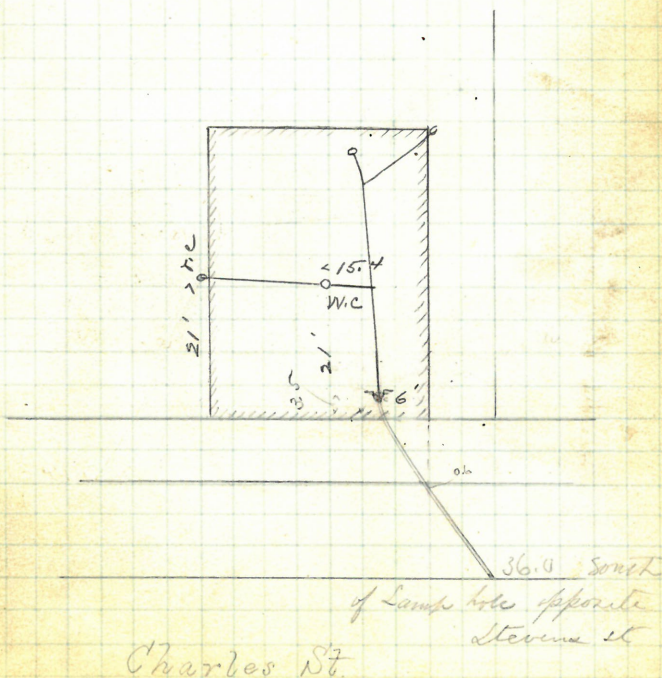
Reopened Oct. 21 - 1912

Closed " 22 - 1912

M. Lyons D. L.

P2077e2 -

✓



John Armstrong
 124 + 122 Charles St.
 John Knapp
 S. L.

Permit No. 1588

Cut at curb 10.3

Opened June 7, 1876

Closed " 9, 1876

Reopened June 13-1879 by John Knapp

Closed " 14-1879

Reopened Jan'y 1919

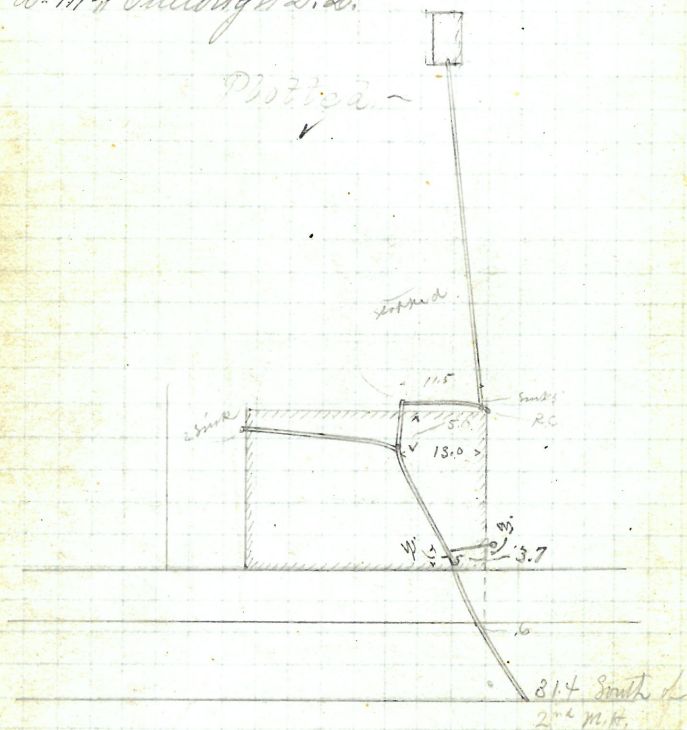
Closed " 1919

B. M. $\frac{7}{8}$ Bullough D. L.

vault beam

Plotted -

V



Charles St.

Sackett Daws + Co.
#58-60 Richmond street.
E. cor Friend ship st
Apr 7, Brown
S. L.

Permit No 15-H-1602-03
Cnr of curb 89

Opened June 9 1886
Closed " 7 1886
Reopened Apr - 7 - 1882
Closed " 19 - 1882

Extended March 12, 93

Received - Dec 7, 1948

Chas. - Dec 13, 1928

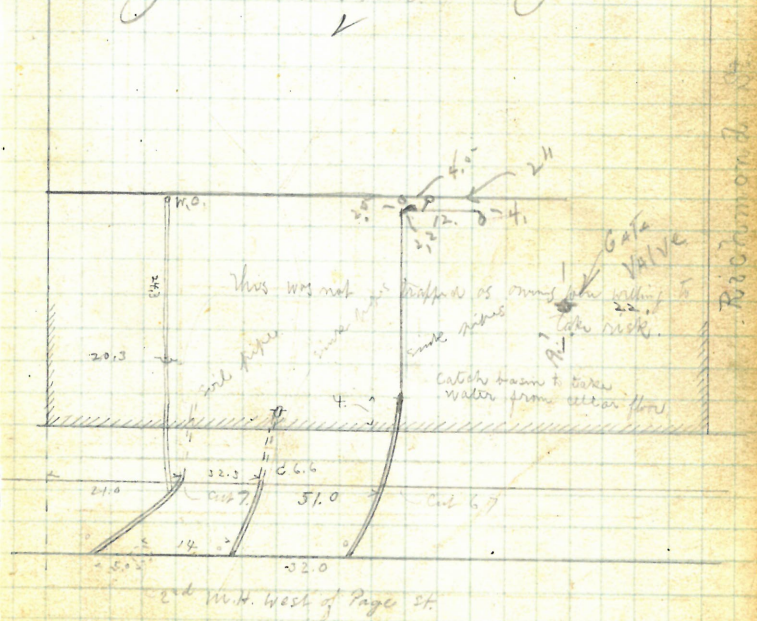
H. Peavey

Reopened - Dec 26/1928

Checked - Dec 16/1988

F. Resny

Photoed

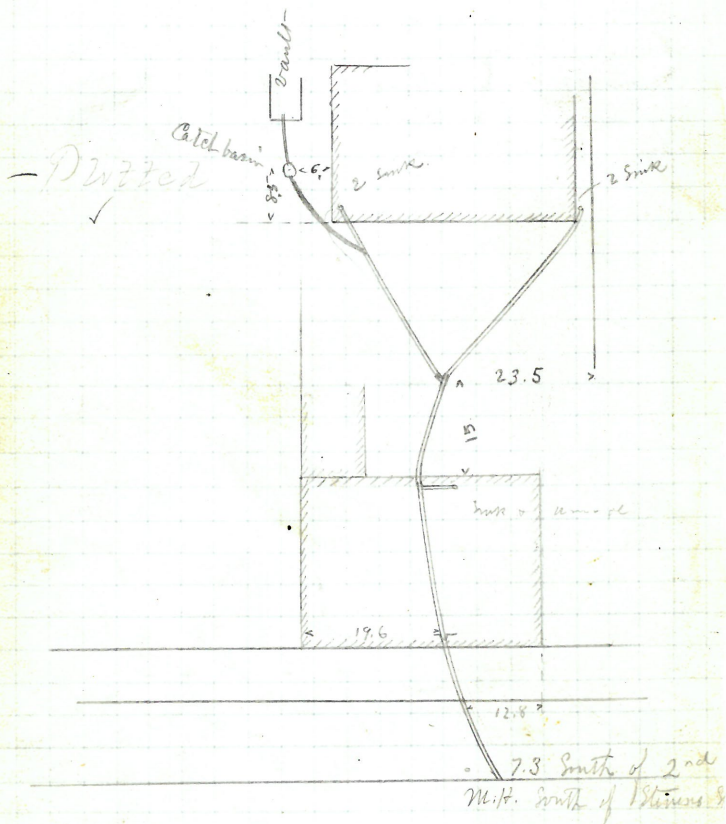


GONE

John Doyle + wife
 12 + 8 Charles St.
 John Keegan
 D. L.

Permit 10 1596
 cut at cut 10.3

Opened from 9 1876
 closed " 12 1876
 Reopened July 11 - 1878
 closed " 12 - 1878 through



Charles St.

James Butts
N.E. cor. Langley and
Hospital Streets

John W. Briggs
D.L.

Res July 9 1946 7/8/46
Clo July 9 1946 7/8/46

Permit No 1595
Cut at curb 8.

add for rail line F. Beavert 102

Opened June 10, 1876
Closed " 12, 1876

Reopened July 9 - 1888 by J. F. Read

Reopened Nov. 16, 98 - Edmund

Closed " 1898 - H. J. Shadysky, D.L.

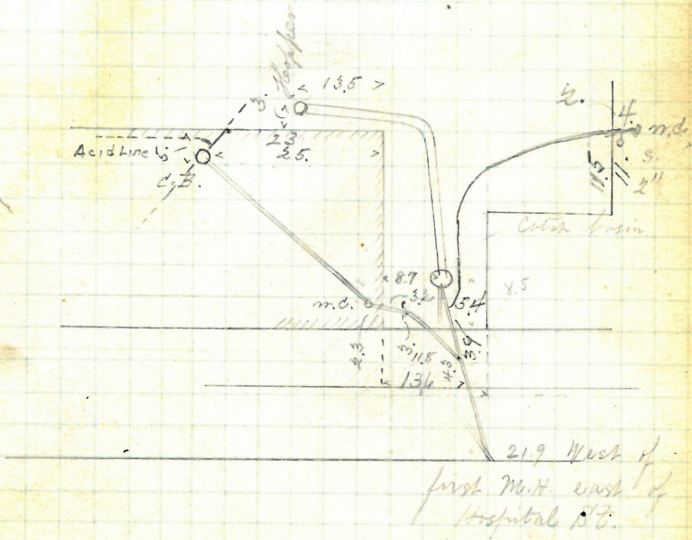
Reopened Jan. 30 - 1923 Reopened Feb. 1 - 1944

Closed Feb. 1 - 1923 Closed " 7 - 1944

A. Capaldi, D.L. - L. H. Reed, D.L. -

Plotted -
V

Hospital Street



Langley St.

Globe

H. F. Carpenter

29 Page St.

Gen. M. Corcoran

S. L.

Permit 15 99

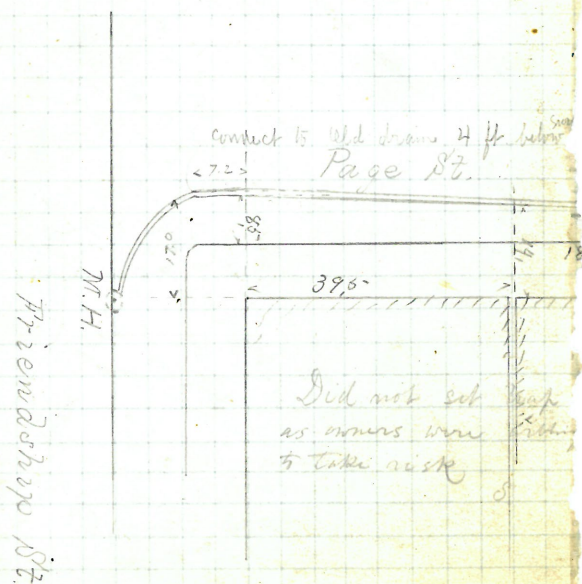
Cost of work 1.00

Opened June 12 1886

Closed " 13 1886

Reopened Apl. 2 1886 by J. Frank Read

Plotted -



E. A. Robinson,
 Sarah C. Anthony
 53 Richmond St.
 John W. Briggs
 S. L.

Permit No 1608-9.
 cut of cut. 6.0

Opened June 13 1876
 Closed " 17 1876

10/15 Reopened Oct 15, 1941

Arrest " 17, "

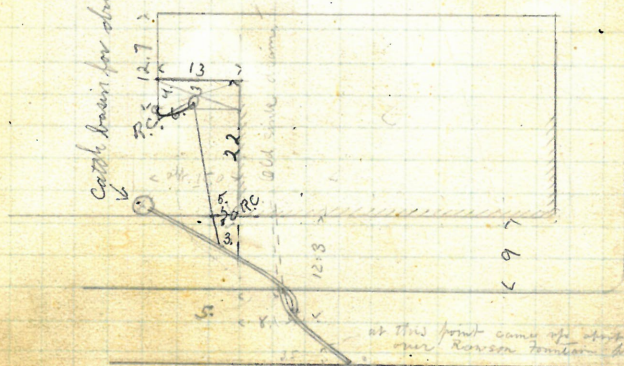
E. Di Mundo - Adm. C.B. and 2 R.C.

Open sidewalk

Plotted -
 ✓

98.01
 at the R.C.

Catch basin for drainage of yard



79 West of N. H. at Richmond St

Friendship St.

GONE

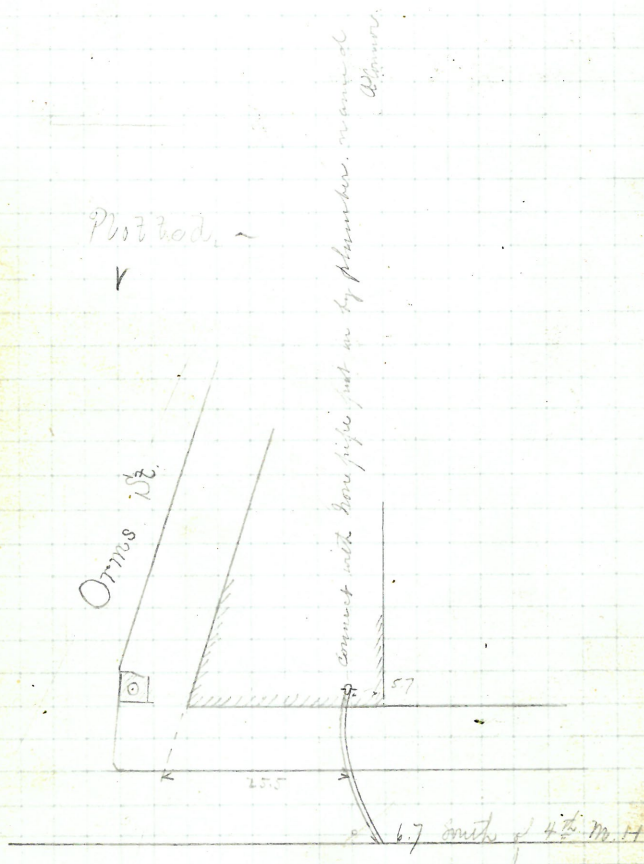
Michael Mc Hale
 N.W. cor. Oms + Charles streets
 Patrick Rooney
 S.L.

Permit 10 1610
 cut of curb 8.9

Opened June 13. 1906.
 Closed " 17. 1906.

Proposed ~

✓



Charles St.

87.

Closed - Nov. 13, 1944

C. Pono. - Disconnect

#185 Bridgham St.

Opened June 13 1876.

Closed 1876

Rev. Feb 26 1947 21

Feb 26 1947

Chas R Latta 10 2/97

Charles W. Moore

N.E. cor. Bridgman & High St.

F. P. Dufferin

J. L.

Permit N 1612

cut at cost 11.0

Plotted

Bridgham St.

1177-1181 Westminster
probably connects here

High, 51-

On the west of Lodge D

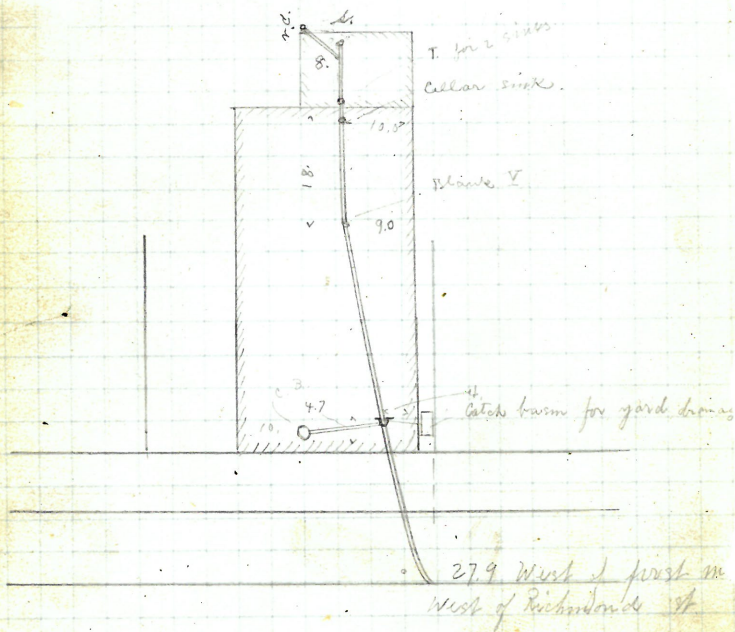
E. A. Robinson
 129 Friendship St.
 Frank Holden
 D. L.
 Permit No. 1613
 Cut at curb 7.8

Opened June 14, 1876

Closed " 21, 1876

Reopened & closed Oct. 22, 1898 - J. F. Read & S.

Plotted -
 ✓



Friendship St. -

Sackett Davis & Co
60 & 58 Richmond St.
cor Friendship St.
Wm F. Brown
D. L.
Permit No 1604
cut at curb 6.5

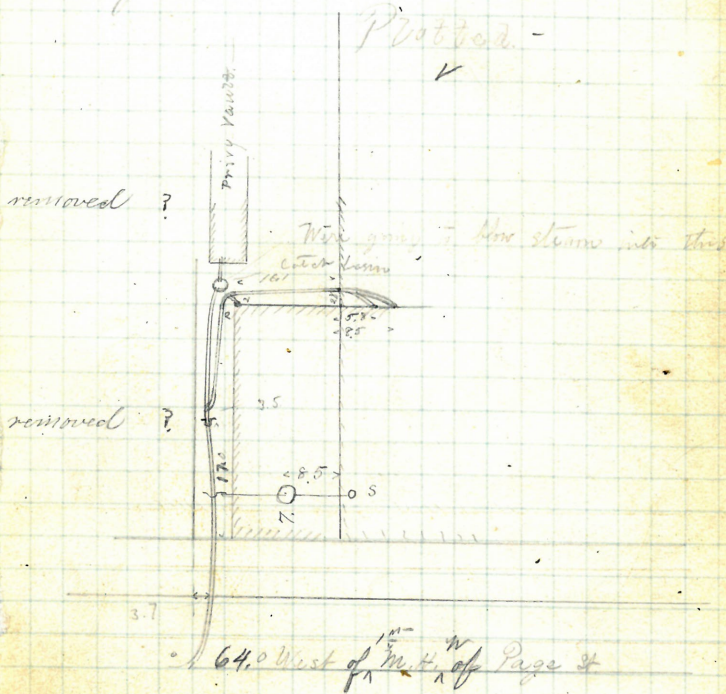
Opened June 14, 1876
Closed " 17, 1876

Reopened May 9/93

Closed May 9, 93 J. O. Cole D. L.

Reopened & closed Aug 4-1902

J. Deary D. L.



Friendship St.

L. W. Bowen -

Thomas A. Richardson
North side Friendship St from
Page St to Richmond St.
Hiram S. Reed

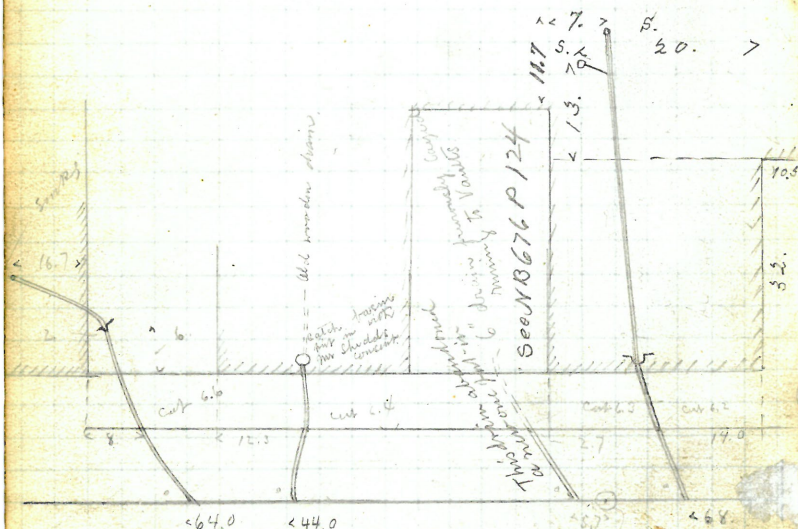
D. L.
Permit No 1590 - 91 - 92 - 93

Cut at curb.

Opened June 15, 1896. Closed Jan 28 1909
Closed 23, 1896. Closed " 29-1909
Opened March 3-1902 F. E. Hubelcy D. L.
Closed " 5-1902 Per. Oct 28/32
F. E. Hubelcy D. L. Plug at curb.
Rear St.

Plotted -

✓



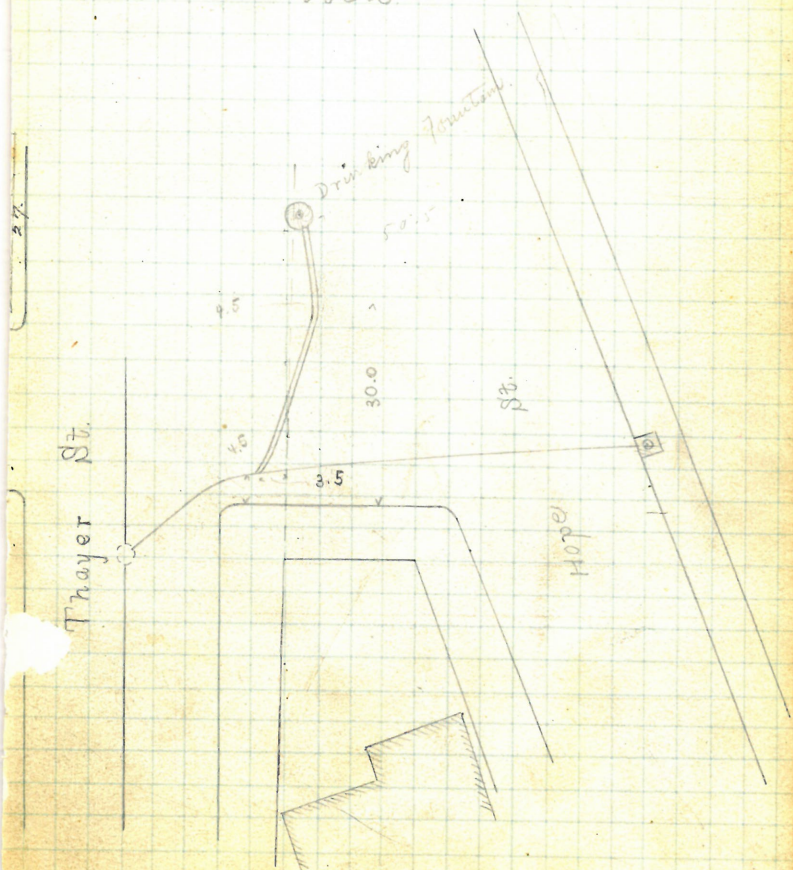
Friendship St.

City of Providence
 Drinking Water, junction of
 Hope and Thayer Sts
 W. S. K. Under
 D. L.

Permit No 1620
 Cut at cost

opened June 19, 1926
 closed " 20, 1926

Plotted

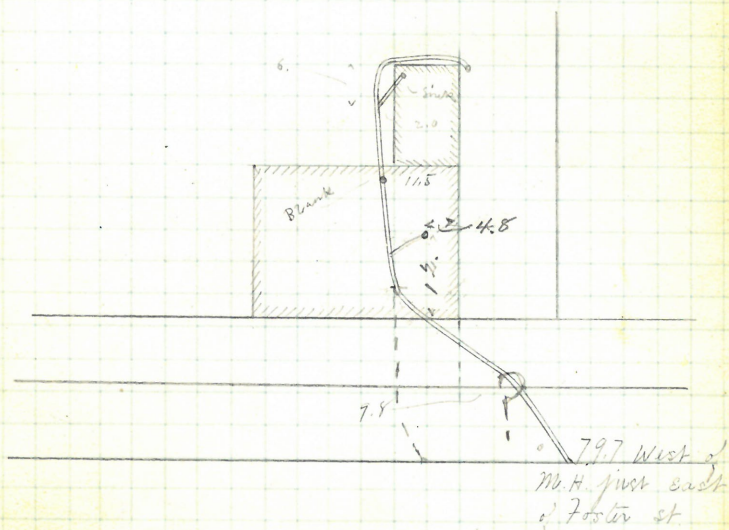


REMOVED

John Russell
 221 Friendship St.
 Wm F. French
 D. L.
 Permit No 1621
 Out at inst. 9.5

Ground from 21. 1876.
 Closed " 23. 1876.
 Reopened & Closed April 29-1905
 D. M. Chail D. L. ~

Plotted -
 ✓



Friendship St.

Thomas A. Richardson
 121 7 North side Friendship St.
 from Page St to Richmond St.
 Hiram S. Read

D. L.
 Permit No 1594.
 cut at curb. 6.88

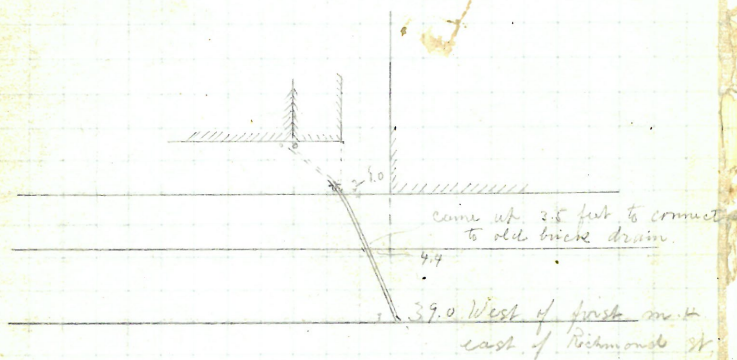
opened June 22 1886.

closed " 24 1886

opened to relay May 5/92 of H. Read & S.

Plotted -

v



Friendship St.

v to

v

Removed

Hannah Warren

15-17 Wickenden st.

Thomas B. Ross

S. L.

Permit No 1635

cut at cost 9.00

Opened June 26, 1896

Closed " 28, 1896

Reopened July 30-1899

Closed " 30-1899

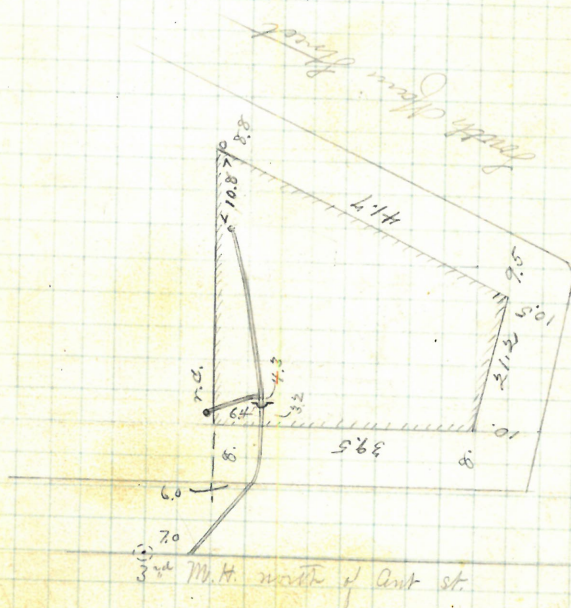
Reopened Aug. 4-1894

Closed Aug. 7-1894

D. E. Barry D. L.

Plotted.

V



Wickenden St.

97.

No 94. Benevolent of

Mr Andrews + son

2. 2

Permian No 1636

cont at curb, 10.5

Open d June 26. 1876

Closed July 3. 1884

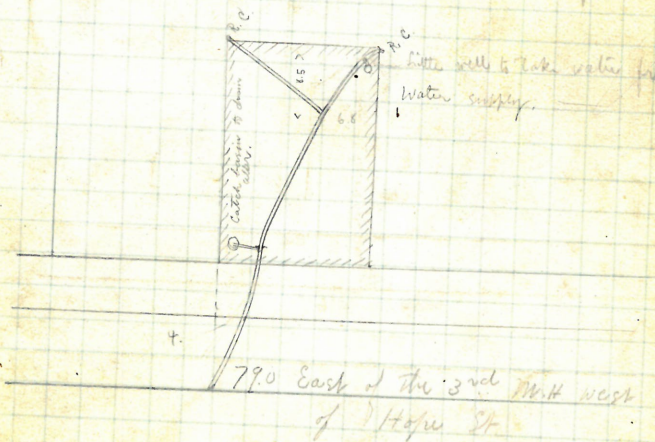
For 94. Work done under this Reopened Dec. 13-1944

Permit Aug. 8-1942 Sec. Closed 11 1942

Dist. No. 2317 - Pg. No. 140 - D. G. Smith & Co. 11 1924

Along Hiller Bottom -

✓



Benevolent St.

GONE

Thomas Little

46-50

30 & 32 Providence St

Jason A. Blackmar
D. L.

Permit No 1623

cut at cut, 10.2

Opened June 26, 1894.

Closed " 29, 1894.

Reopened, Oct. 18, 1900, to clear + add new

Cloud " 20/11 P. Brady D.L.

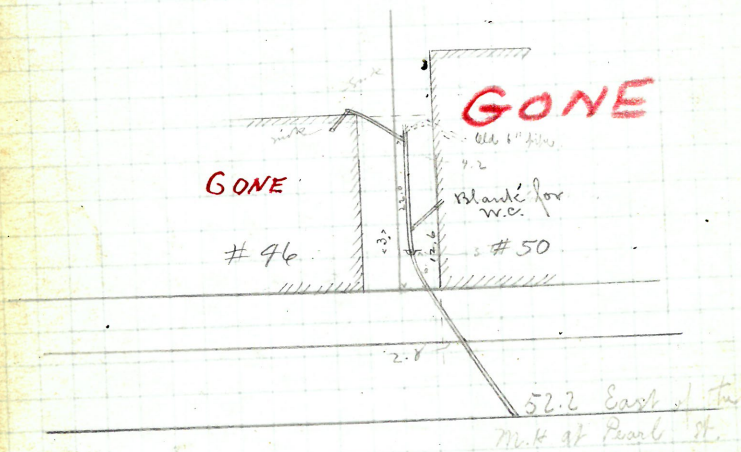
Reopened Oct 1, 1934

Closed Oct 1, 1934

M. Lyons P.L.

Plotted

V



Providence St.

Allen Chase

21 + 23 Arch St

John V. Buzzs

D. L.

Permit No 1638

cut at curb, 9.0

Opened June 26 1876

Closed July 1 1876

Reopened May 21

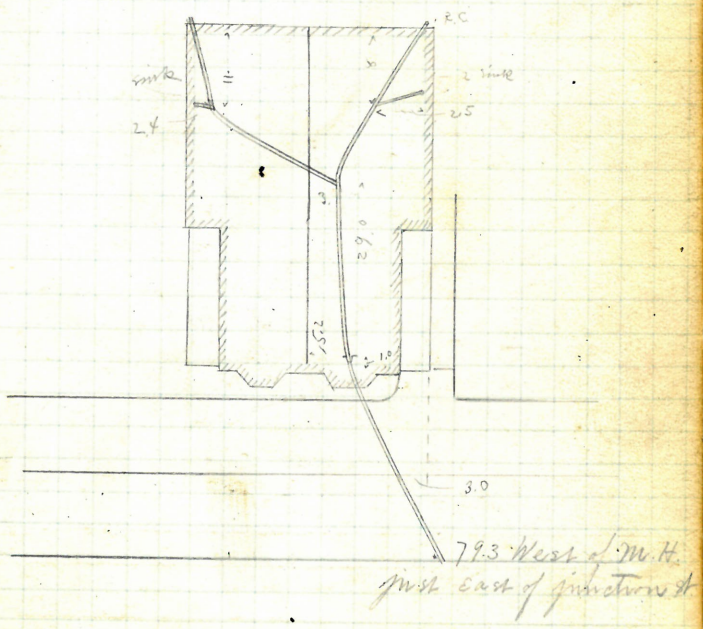
Closed " 22/35

Clear R. Keyes

10 Reopened - Oct. 31, 1939

30 Closed - Nov. 1, 1939

R. A. Keyes - Cl. - Rents.



Arch St.

H. - $\frac{157}{6}$

101

486-490

John Wilson Smith

410 - 414 Mountain St.

Jason A. Rasmussen

D. L.

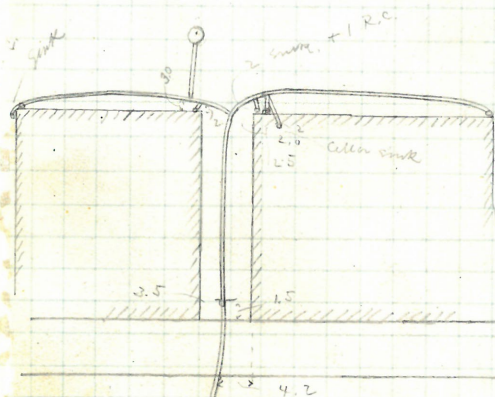
Permit N° 1239

Cost of work 9.4

Open'd July 1 1876

Close'd July 6th 1876

Plotted



93.0 West of 2nd m.H. west of
Battery St.

Mountain St.

$$P - \frac{157}{6}$$

E. F. Manchester

No 469 High St

Fred. L. Durfee

2. 2.

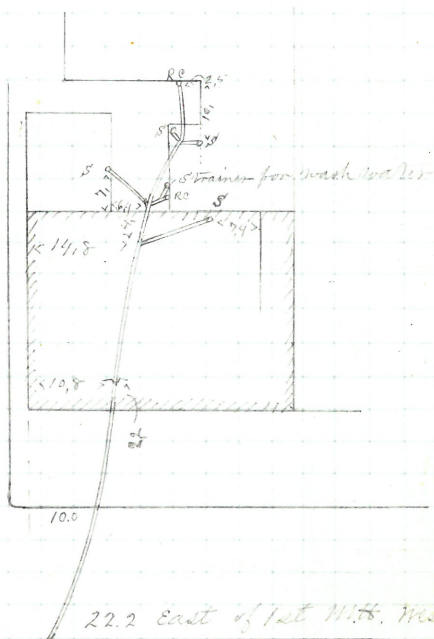
Permit No 1641

Curb at curb. 10.0

Open or July 5 1826
Closed 11 1826

Closed 11 1876

Plotted



22.2 East of 1st N.H. West of

Battery St.

High St.

Abby A. Ham
7.5 Poins

75

Point 4.

John W. Briggs

Permian No 1644

Curve of curve, 9.

Opened July 7 1876

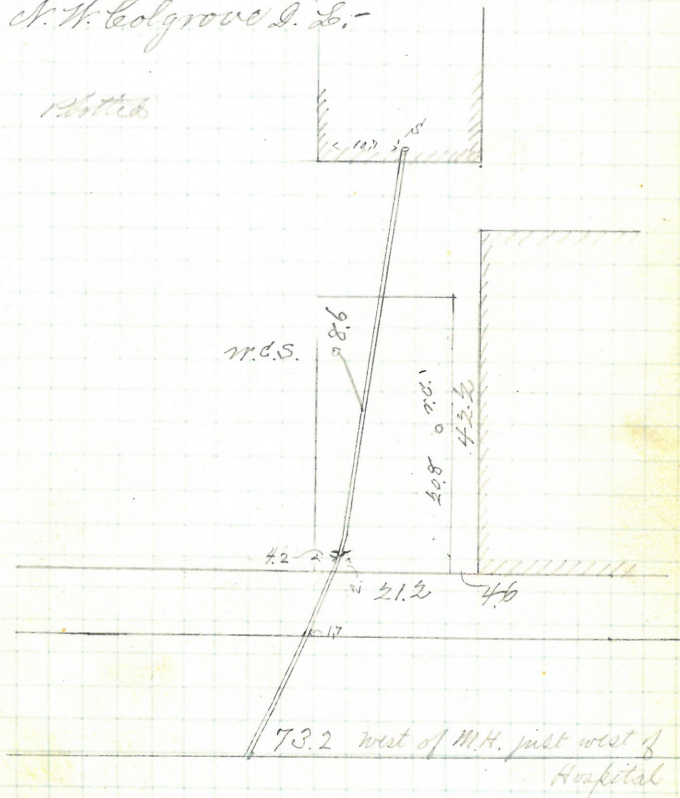
Class of 1813

Refused June 8-1916

Closed " 10-1916

A. W. Colgrove J. L.:-

1876



Point St.

Edward Pearce

245 Tux St.

77 Thomas B. Ross

Permit No. 1659

cut at curb 5.8

Opened July 17th 1876 Proposed Oct. 8, 98

Closed July 19th 1876 Closed Oct. 19, 98

J. L. Read L. L. F.

Platted

Proposed Grand Trunk 1904
M. H. Murphy D. L.
Proposed Nov. 16-1907
Closed " 7-1907
J. C. Curney D. L.

T.C. 39.

Rea Oct 8 1948
Clo Oct 8 1948 1/22
all see Return 1/4
B. Senior D. L.

161.

39.8

T.C.

nd.
2.12.27

23.

27.

87.5

Dyer Street

enters sewer 34' South of 222 man hole
" " Dorance Street

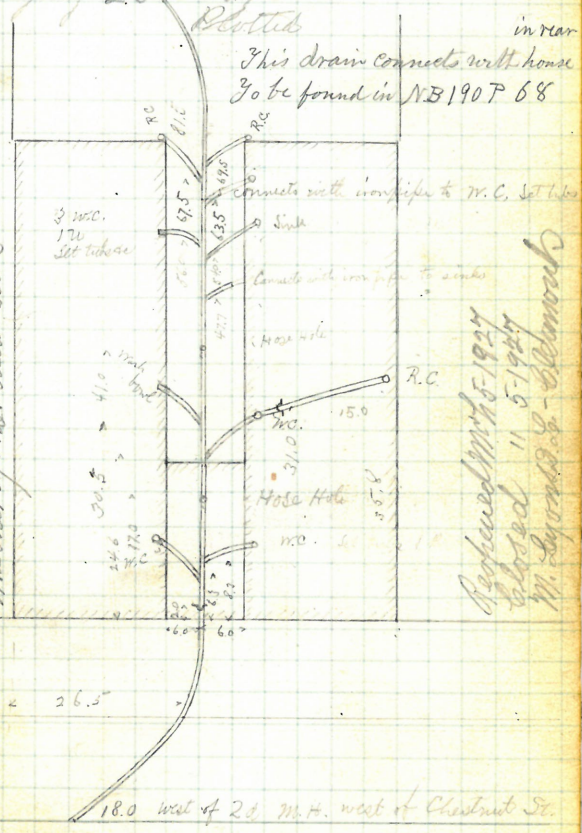
Beriah Wall
282 and 284 Broad St.
Jesse A. Blackmar

26.5
13.5 R
17.2 L
19.1 R
31.5 H

Permit No. 1664
Cut at curb 8.9

Reopened July 2-1902
Closed " 7-1902
J. Kearney & Co. Cleanout.
Reopened July 25-1919
Closed " 1919
H. Schwartz & Co. Cleanout

Opened July 18th 1876
Closed July 25th 1876



This drain connects with house
To be found in N.B. 190 P 68

Reopened July 15-1924
Closed " 5-1927
W. Lyons & Co. Cleanout

Broad St.

Removed

Salem, N. J.

132 Pond St

Fred P. Surfer

J. D.

Permit No. 1665

cut at curb 10.3

Opened July 18, 1876.

Closed July 20, 1876

Reopened Jan 25, 1927

Closed " 27, 1927

at Bernardinelli's

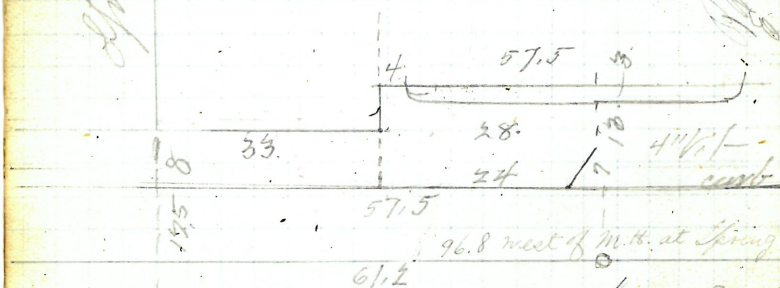
Clenon

Plottel

For inside work see
complete plan in
Public Bldg's Dept.
New Commercial
High School

Spring Street

Unit of 6 in. diameter hole
from sand in hole



Pond St.

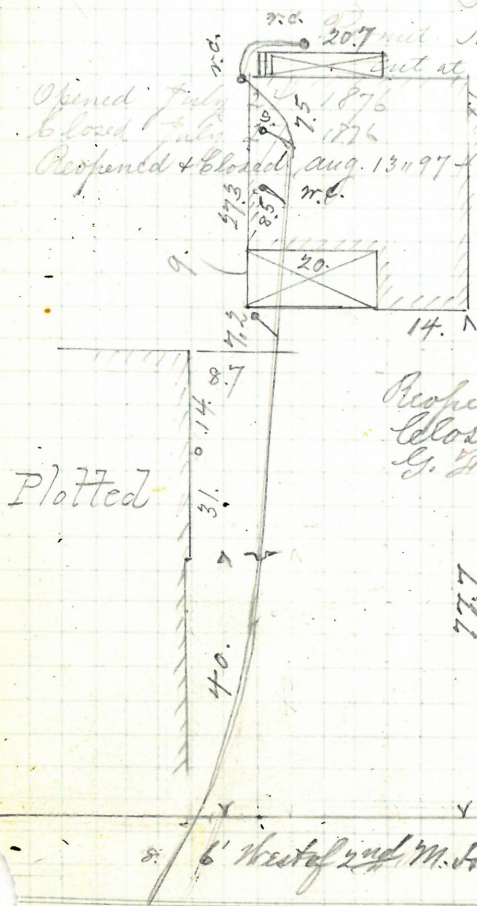
14 in. hole
N. of Spring St.

#98

John Faden
52 Meeting St.
John H. Earl

S.L.

Opened July 1876
Closed July 1876
Reopened & Closed Aug. 13, 1897
No. 1668
cut at curb 7.2
See G. H. Lewis S. L.



Reopened Sept. 9-1909
Closed " 11-1909
G. H. Lewis O. Lr.

Meeting St.

W. E. LUND P-170

22

~~Sam'l B. Pearce~~261-263 79 Richmond St. N.W. corner
Jason & Blackmer main drain
S.B.

OPENED 3/25/76

CLOSED 3/25/76

D.L. W.E. LUND

NEW TRAP AND

NEW CELLAR BOTTOM

Permit No. 1667
cut at curb 10.21

Closed July 25, 1876

Reopened Nov 25, 1893, by P. Tierney & Co.

Reopened Feb 9-1914

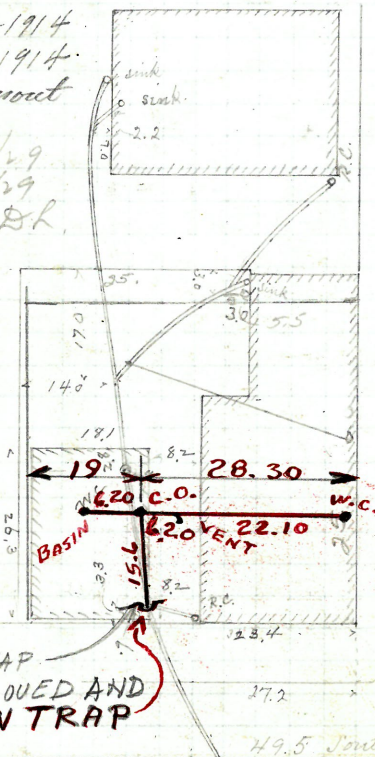
Closed 1914

J. Henry D. Cleanout

Reopened Jan. 11/29

Closed 1/16/29

E.P. M. Sweeney & Co.



Plotted

Tallmans Lane.

OLD TRAP
REMOVED AND
PUT IN NEW TRAP49.5 South of m.h.
at Tallmans Lane

— Richmond St. —

Catherine Gleason
Hewes Street.
J. Frank Read
S. L.

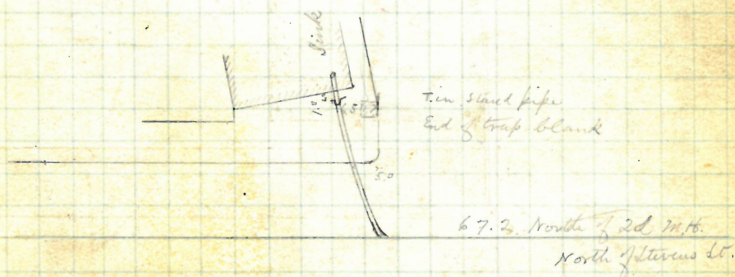
Permit No. 1669
cut at curb 10.6

Opened July 21 1876

Closed July 24 1876

F

Noted
v



— Hewes St. —

Allen Shaw

14 Lockwood Street

John O'Donnell

Irish-Layer

Permit No. 1670

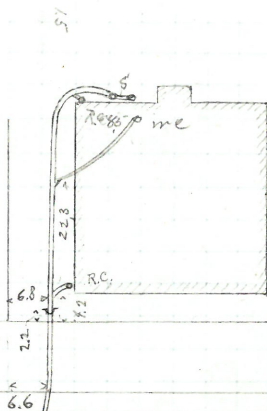
Cut at curb 9.6

Opened July 21 1876

Closed July 25 1876

F

Plotted



31.1 ft west of 3d. W. H. from Hospital St.

— Lockwood St. —

Billings Bros

110 Worcester St

John W. Briggs

J. L.

Permit No 1671

cut at curb 6.6

Opened July 21 1876

Closed about Oct. 14 1876

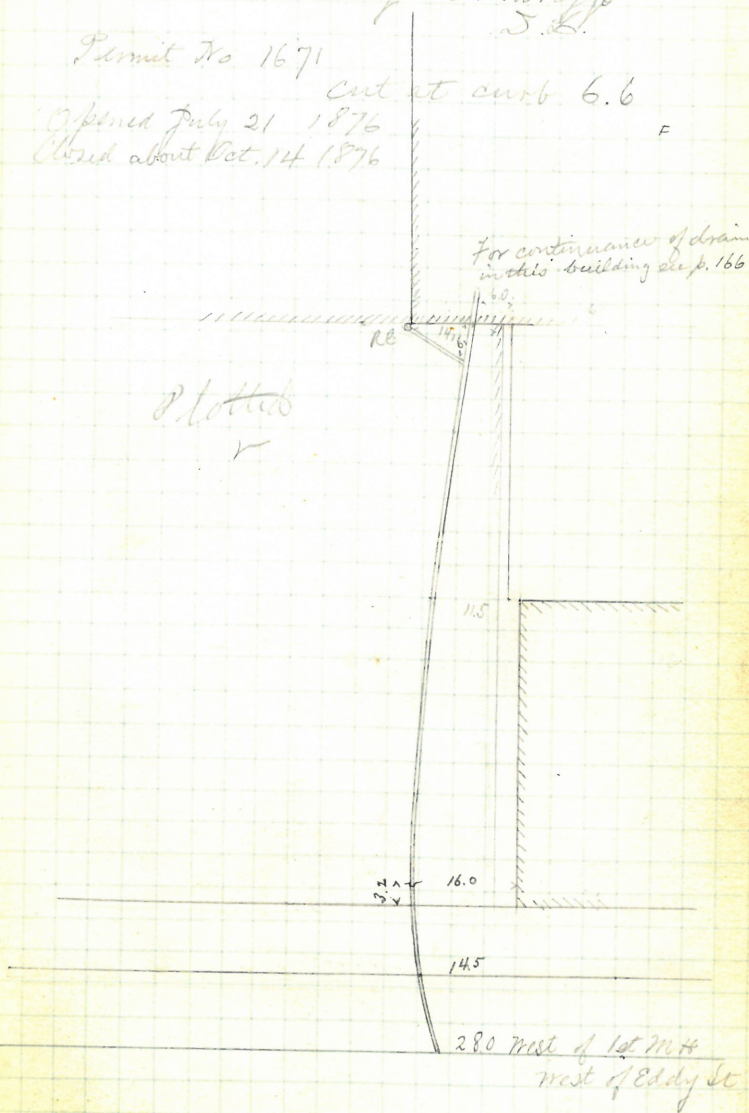
F

for continuance of drain
in this building dep. 166

R.L.

P. Lott

r



— Washington St. —

FD

350 Pine St.

Fred T. Surfer

J. L.

Permit No 1673

cut at aurb 10.2

Opened July 24, 1876.

Closed July 10, 1876

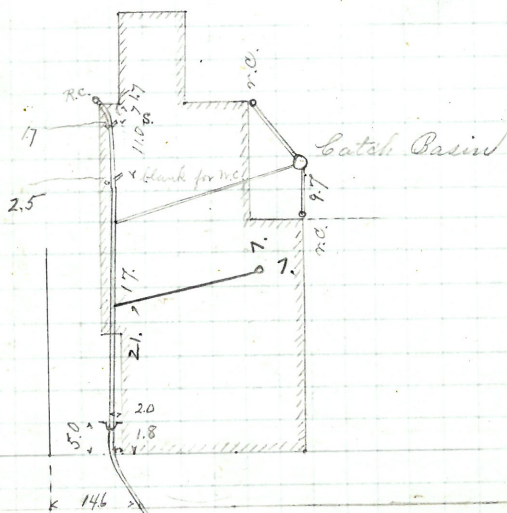
Reopened July 16, 95

Closed 1795 J. P. Tierney D. D.

6, Reopened - June 11, 1941

11 Closed June 13, 1941

S.W. Brooks - Add 4" x 3" I.



3 ft East of M.H. West of Seckel

Pine St.

115

85 & 89 Elm. St.

Jason A. Blackmar J. L.

Permit No. 1674

Cut at curb 8.5

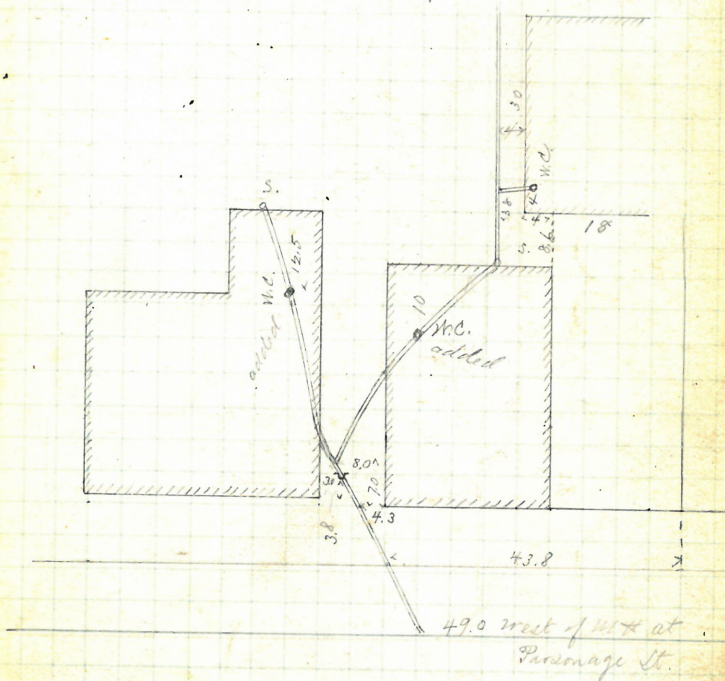
Opened July 25, 1876

Closed July 27, 1876

Reopened Sept. 5-1893

Closed Sept. 6-1893.

Plotter



Elm St

P. 168
11

Permit No. 1675

Closed July 29 1876

Extended Sept. 28. 1876

Refined July 9-1878

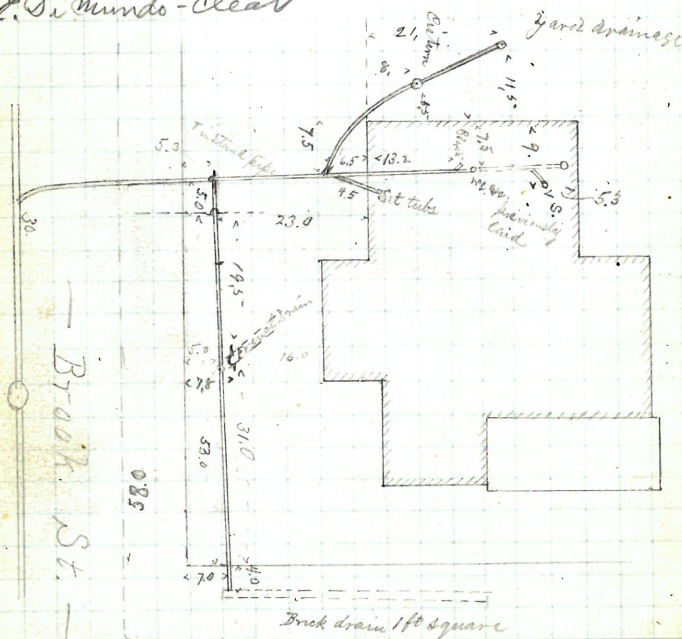
Closia " 13-1878

Reopened & closed March 31, 99 - Geo. R. Phillips S. L.

4 Reopened - Apr 20, 1938

20 closed - After. 20, 1938

L. Simundo - clear



— Angel St. —

GONE

Sam'l E Keller

71 Bridgham

Frank Read D.D.

Permit No 1677

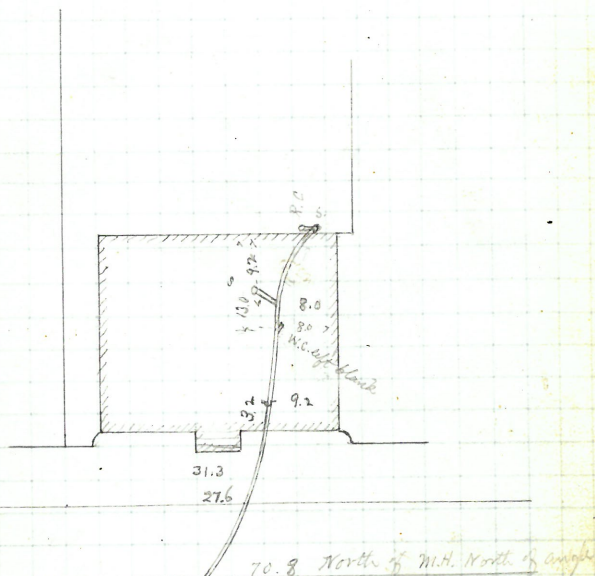
Cut at cut 10.3

Opened July 27th 1876

Closed 28th 1876

F

Plotted



— Bridgham St. —

George S. Harwood
249 783 Fountain St.

249 ~~183~~ Fountain St.

Jason A Blackmar J. E.

Permit No 1678

Cut at circ 7.1

Opened July 27th 1876

Closed Aug 15-1876

Reopened June 18-1883 by J. Knapp D.D.

Plotted

Michael Bradford
6 - 2000

5-202

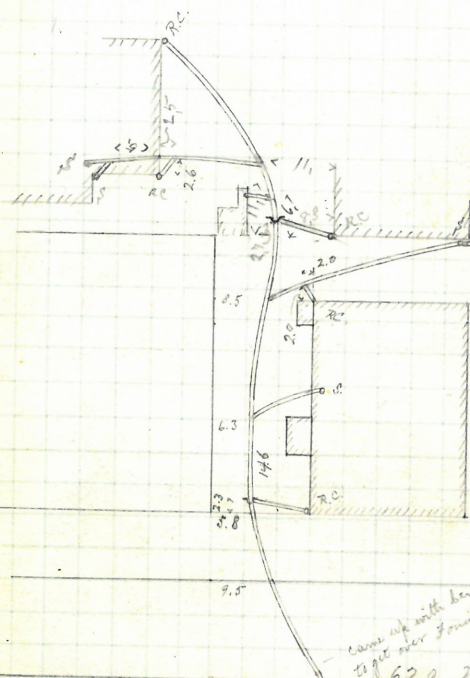
Japan 29 Black m.

Sept 1678

Closed August 11th 1876
 Closed
 RE - 1876

✓
RE

1816
RE



came up with letter
to get over Fountain Pop

to give 62.0 West of MK at

62.0 West of M.K. at

Jackson St.

Fountain St

10 ft out from this curb 5 ft deep

W. A. Chapman Plan $\frac{163}{1}$

129 Broadway

Sol. Thornton T. L.

Permut No 1679

Cut at curb 7.8

Opened July 26th 1876

house North of this plotted on page 134

Reopened Dec. 9, 1896 - Cleanout - D. Holmes & Co. D. L.

Propane June 1922

Closed 1124-1922

P. Gallo J. L.

Plotted

Block "D" 11-1906
Wm. MacGregor & S. - Elmwood -

Extended to page 134

Prepared April 24, 1915

boxed 11 24-1710
C. Gilbert & Co.

See 61.193.64.17

3.

Gone

Depth below curb line 10.2

— Broadway —

A H one connected to this drain
will be found in Book 196-Page 77

126+128 new

Thomas Kilbunny

5 Pettis Street

Patrick Conroy J.L.

Permit No. 1683

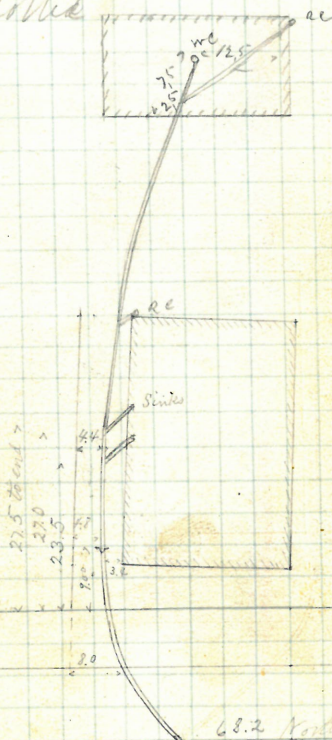
Cost at cart 9.7

Opened July 29 1876

Closed Aug 1 1876

Reopened Apr 24 - 1883 by John Kerpl 82 F

Plotted



— Pettis St —

John L. Ormiesee
 S.W. cor Thayer & Power Sts 799
 David W Barney Ltd.

Permit No 1682

Cut at curb P.S.

Opened July 31st 1876 Reclosed Aug 16-1916

July 10th Closed " 17-1916

Reopened Dec. 25 94 J. P. Tierney D. L.

Closed Dec. 26 94

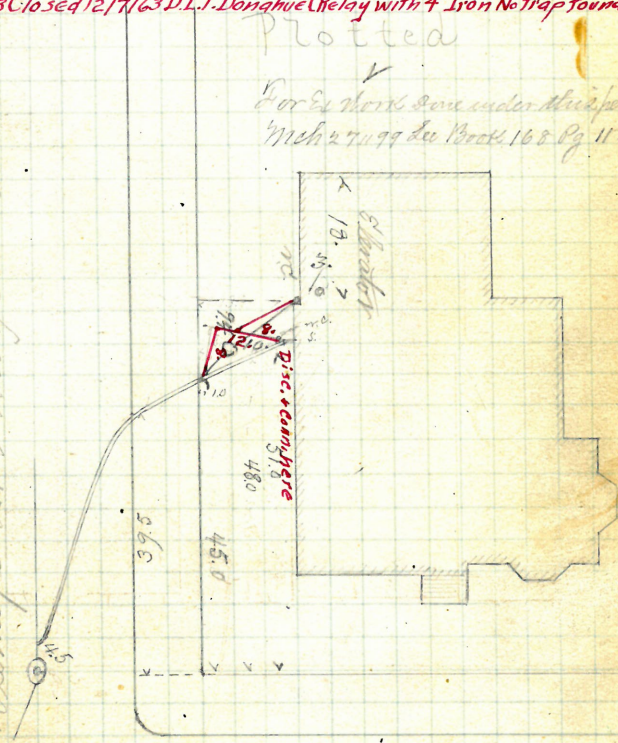
D. Holmes & S. L. Cleanout of Root

Co. 12/5/63 Closed 12/7/63 D.L.F. Donahue (Relay with 4" Iron No trap found)

Plotted

For work done under this permit
 Mich 27 99 du Brock 16 & Pg 118

Produced June 10 1876
 J.P. Tierney D. L. Thayer St



Power St

REMOVED

71-73

~~75-77~~

Bridgham St.

Jas. A. Blackmar. J.E.

Permit No 1687

Cut at curb 10.4

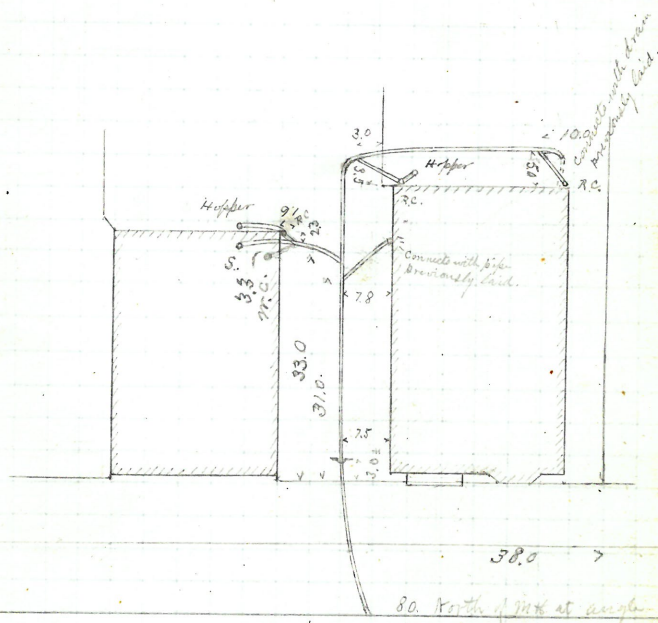
Opened Aug. 1 1876

Closed Aug. 9 1876

Reopened & closed July 9 1906

J. Deary D. L. L.

Plotted



Mary F. Gardiner

12 Atwells Ave.

John Keogh S.S.

Permit No 1688

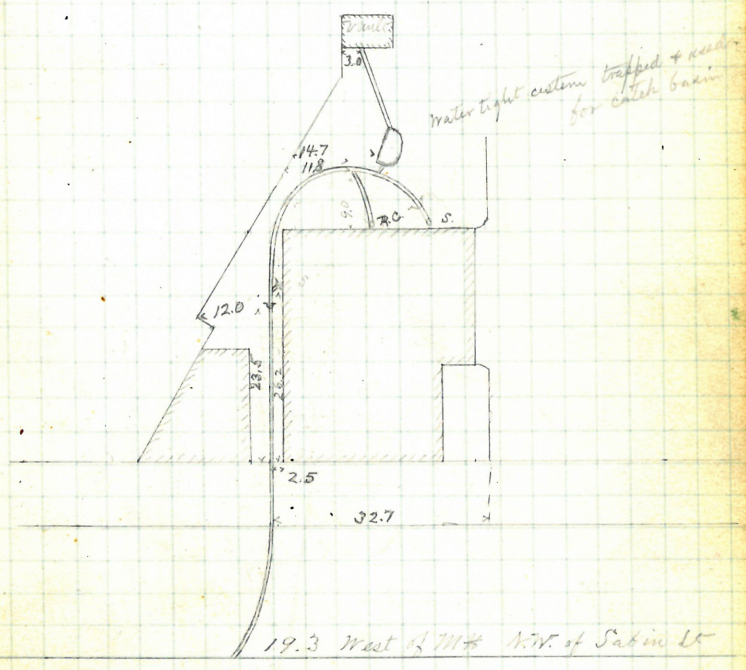
Cut at curb S. 3

Opened August 1 1876

Closed August 4

F

Plotted



Atwells Ave.

John Monahan

#4-10.10.10

289 & 291 Atwell Ave NW 1

P. O'Sullivan S.E.

Permit No. 1689

Cut at curb 9.3

Opened Aug 1

1876

Finished Aug 4

1876

Re alt Oct 15-1889 by Brady

Reopened June 29-1903

Closed " 29-1903

A. Diello D. S.

Reopened Aug. 3-1910

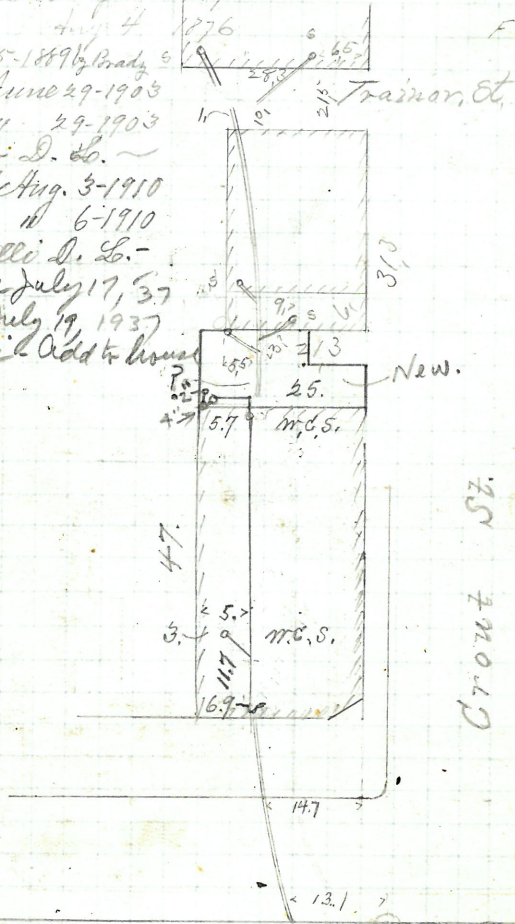
Closed " 6-1910

L. Piccitelli D. S.

Reopened July 17, 37

Closed July 19, 1937

J. Piccitelli Add to house



Atwell's Ave.

13.1 above Mt Hat Crompt St

P. - 163
4

127

Edwin Knight

46 Courtland St.

Frank Road S.E.

Permit No. 1690

Cut at curb 9.0

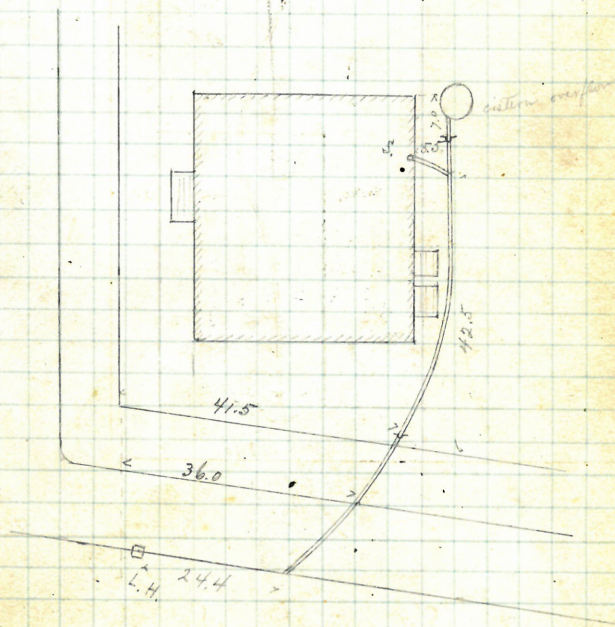
Opened Aug. 2d 1876

Closed Aug. 4th 1876

E

Plotted

Courtland St.



Dawson St.

W. H. + E. B. Hathaway

S E Cor Hospital and South St. #114

John W. Briggs S.E.

Permit No. 1694

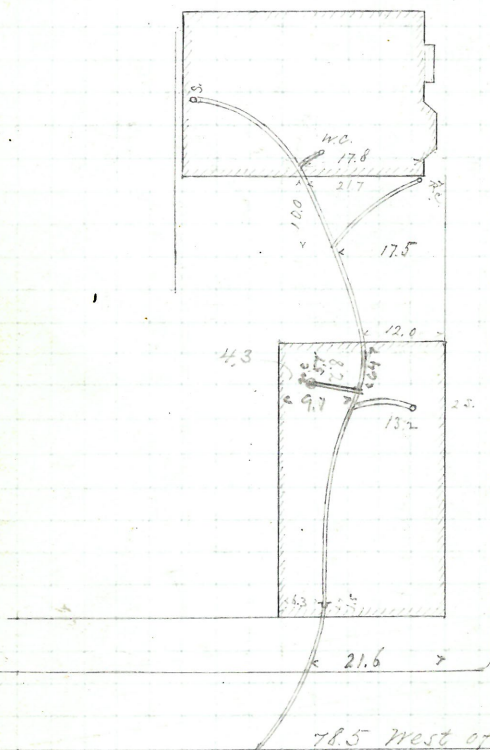
Cut at cost 9.8

Opened August 3 1876

Closed August 8 1876

opened & closed Feb 24/93 22.2 Bead S.E.

Plotted



78.5 West of 1st W.H. West of Parsonage St.

South St.

REMOVED

129

David Cady
254 High St.

Wm. S. Blackmar J.L.

Permit No 1695

Cut at curb

Opened August 4 1876

Closed August 5 1876

Reopened Oct 4 - 1880

Closed " 6 - 1880

Plotted

- C.B. in rear connects into
this drain through
iron pipe in yard -



Iron pipe in rear connects into

Comes up with gutter turn and
connects with inch iron pipe
previously laid.

St. 712 712 712

28.2 West of M.H. near Deane

High St.

REMOVEDHigh Street Bank 344 High
Nathan B Horton 2nd

Permit No. 1698

Cut at curb 7.2

Opened Aug. 8. 1876

Closed Aug. 12. 1876

Reopened Dec. 19-1907

Closed " 19-1907 Plotted

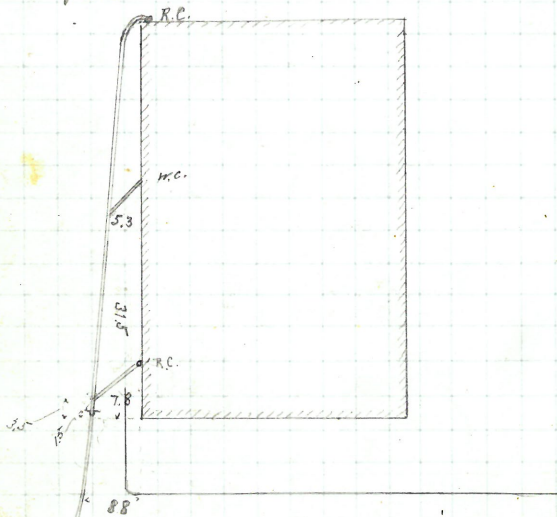
F. A. Perry & L. Cleanour V

No. Aug 18/32

Hd

A. Mahoney L.

Clean



High St.

31.8 West of 3d Ave West of Spring

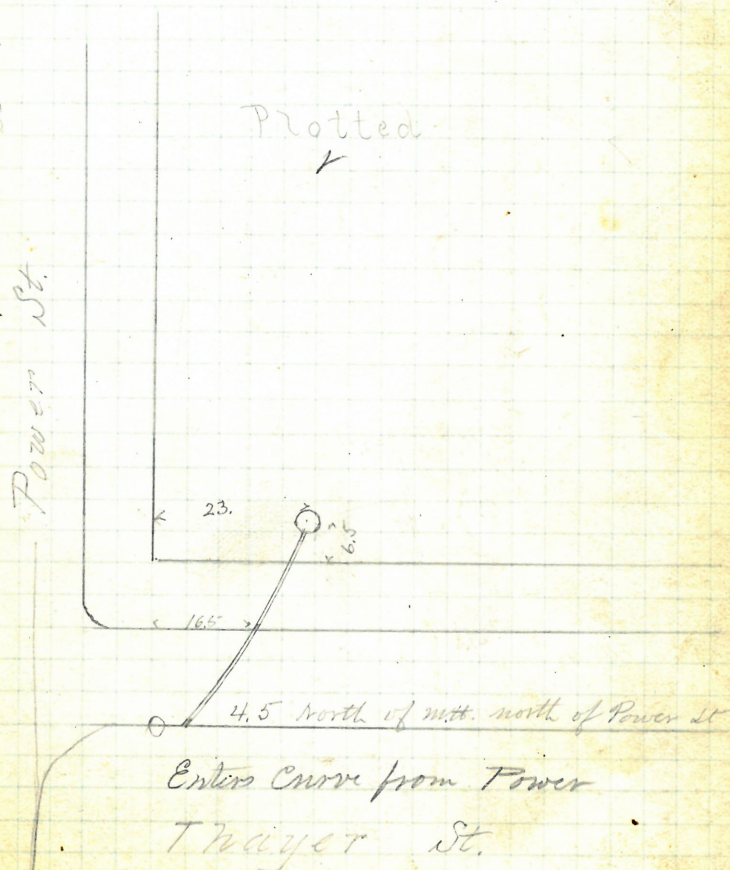
Charlotte R. Liddard
 N.W. cor Power & Thayer Sts.
 Wm. Andrews & Son J.B.
 cut at curb 10.5

August 10 1876 Opened

Closed 24-1876 August

Permit No. 1699

F



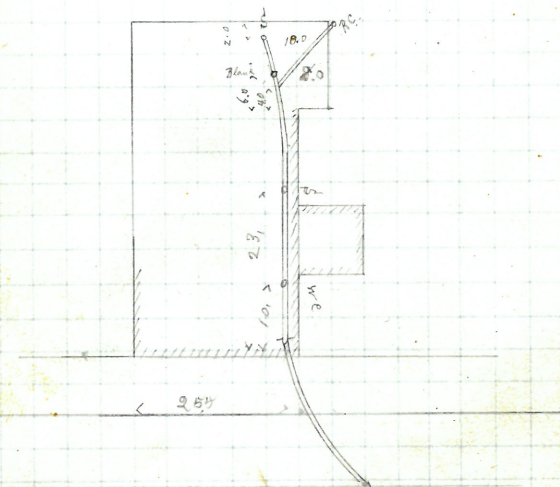
Reopened Oct 4/
Closed Oct 5/34
J. H. H. clear

Continued from page 120

Extended May 4-5 1877
Sol. Thornton
L. G.

Out at Carb. 5.

Plotted



Courtland St.

35 Central St.

Permit No. 1717 J. Frank Read D.S.

Cut at curb 9.5

Opened Aug. 29 1876

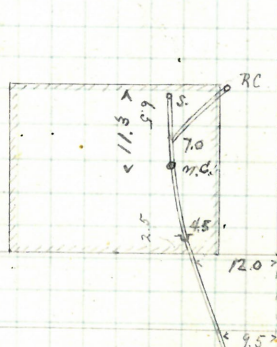
Closed Aug. 30 1876

Reopened May 19-1903

Closed " 20-1903

W. C. Rice D. S.

Plotted



17.0 West of
4th M.H. West of
Pearl St.

Central St.

388 - 392 Eddy St.

Jason A. Blackmar J. L.

Permit No. 1713

Cut at carb. 5.4

Opened Aug 29. 1876

Closed. Sept. 1 1876

Received Oct. 3-1901

74

Feb. 10,

W. N. Chadsey J. L. - Clemonit -

gas

water

pipe drops 10 inches

Plotted

W.C.

知

3 Sine

4

50 Nose Hole

25.7 North

3d. M. H. North of Point St

Edry St.

+

Pardon Angell

311-319

~~56-62~~ Knight St

Fred. P. Durfee J. L.

Permit No. 1723.

Cut at curb 11.0.

Opened Sept. 1, 1876.

Closed Sept. 8, 1876

Reopened May 16-1888 by A Blackman

Reopened June 18, 1891 by B. Brady and McAddid

Reopened Nov. 20. 1895

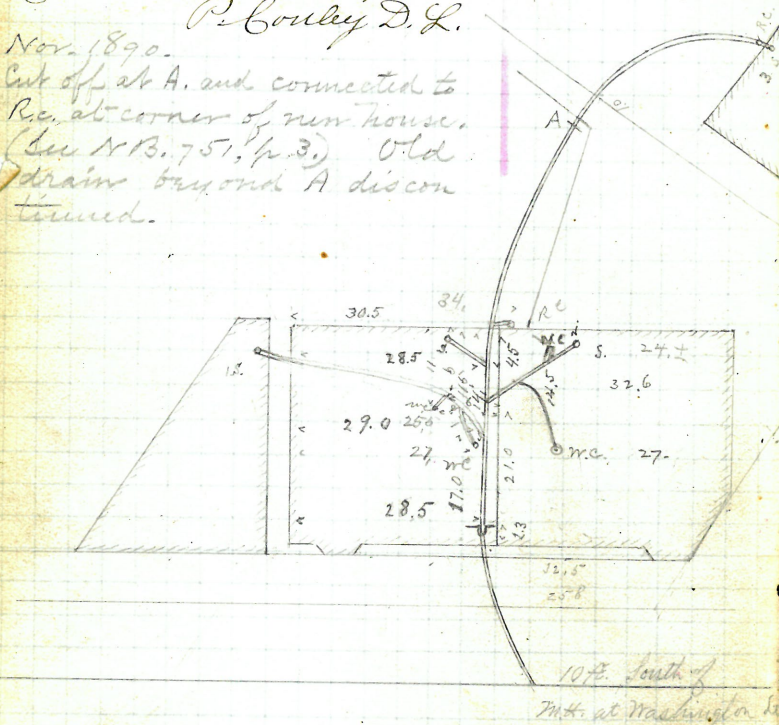
Closed Nov. 20, 1893

P. Bouley D. L.

Nov. 1890.

Cut off at A. and connected to
R.c. at corner of run house.
(See N.B. 751, p. 3). Old
drain beyond A discon-
tinued.

Plotted



Knight St.

P. 157-5 & P. 157-6

139

Anna C. Barstow

S. W. cor Jackson & Garden Sts.

John O'Donnell

Extension of Permit No. 560 A.

Opened Sept. 2nd 1876

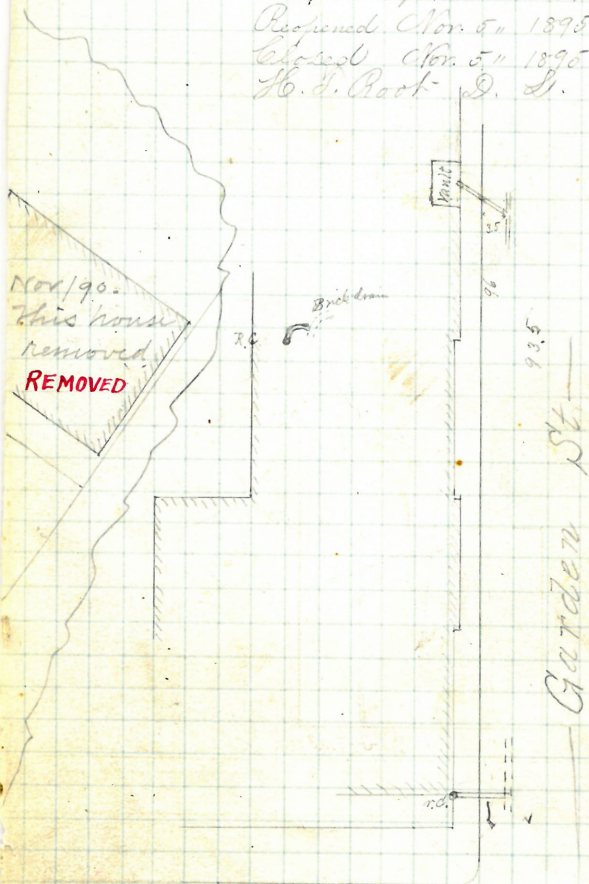
Closed Sept. 2nd 1876

Reopened Nov. 5th 1895

Closed Nov. 5th 1895

H. J. Root D. S.

F



S. A. Elebra

23 Somerset St

E. Frank Head

Permit No 1720

Cut at curb 10.0

Closed Sept. 4, 1940

Closed Sept. 7, 1940

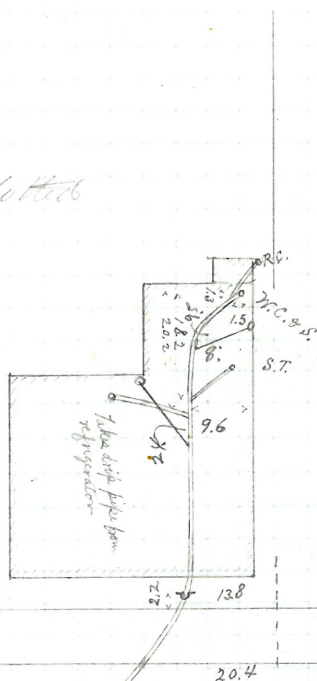
9 Reopened Sept. 12, 1940

13 Closed Sept. 14, 1940

J. M. Goldstein - add 4" I.

F

Plotted



64.0 North of 3d. M.H. North
of Pine St.

Somerset St.

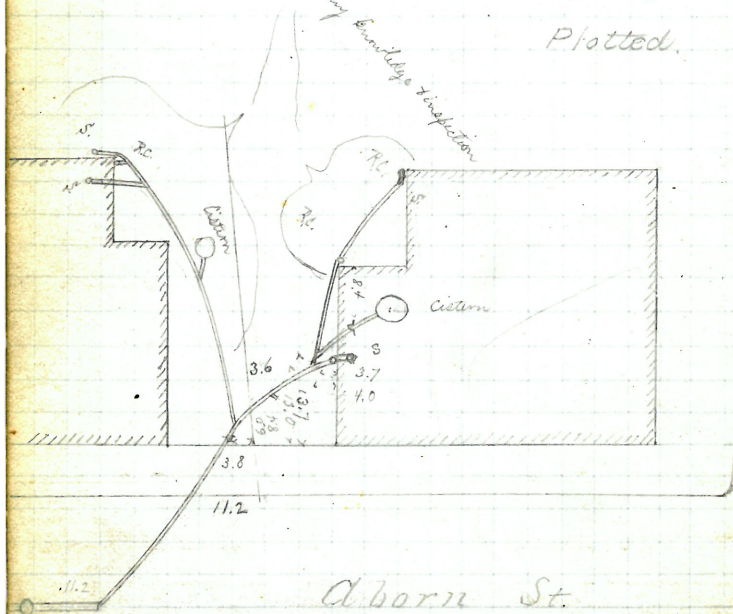
Abandoned **GONE**

W. R. Perce & Ida P. Foster
 121-125-129 Aborn 44 Sabin St.
 David W. Barney D.L.
 Permit No. 1728

Opened Sept. 11 1876 Cut at curb & 7
 Closed " 15 "
 Reopened " 11-1888 by J. A. Blackmar

Feb. 21-23, 1877 Train passing
 and cleared out by Mr. Barney. The
 trap was full of sand.
 J. C. Eaton

Plotted.



Aborn St.

Abandoned.

Removed

143

James P. Rhodes

214 Friendship St.

S. Frank Road S.E.

Parcel No 1724

cut at curb 98

opened Sept 6 1876

closed Sept 9 1876

Reopened May 22 1915

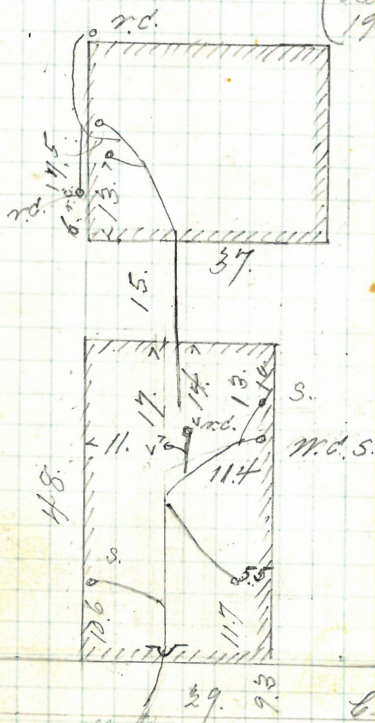
closed July 24 1915

M. S. 01 S.D. 26-

Reopened June 14 July 14

1915 M. S. 01 S.D. 26-

Plotted



39 west of m.h. at Foster St.

Friendship St.

W. S. Burges & L. A. Tillinghast
38 Clemence St.
Henry Blundell

Permit No 1731 B cut at curb 7.0

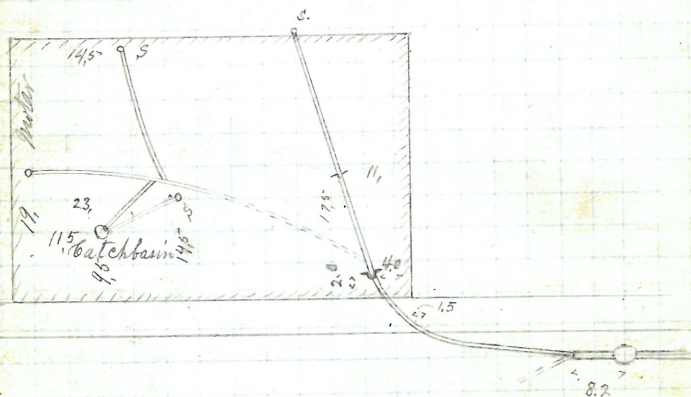
Opened Sept. 9 1876

Closed " 12 1876

Reopened May 21 - 1881 by J. F. Reed & Co

Closed " 28 - 1881

Plotter



Clemence St.

E. A. Robinson

113 7th Chestnut St
Frank Holden S.L.

Permit No. 1732

cut at curb L.S.

opened Sept 9 1876

closed 12 1876

Reopened June 30 1923

closed July 2 1923

H. M. Johnson S.L.

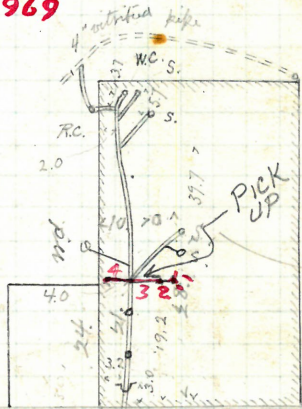
3 Reopened Mar. 5, 1940

5 closed Mar. 6, 1940

W. E. Johnson Add 3" I.

-Plotted-

Add Cellar Bottom
opened Sept. 29, 1969
Closed Sept. 29, 1969
by T. Olean
Add 4" IRON



add clean out to become
manhole to roof

50.0

79.2 North of M.H. North
of Bassett St.

— Chestnut St —

Mary J. Matthews
123 B. 10th St.

123 Broadway

Solomon Thornton D.D.

Permit No. 1733

Cut at curb 9.0

Opened Sept. 11th 1876

Reopened May 31, 1929

Closed Sept. 18th 1876

Closed May 31, 1929

Reopened Nov. 7-1902

Di Ciano D. L.

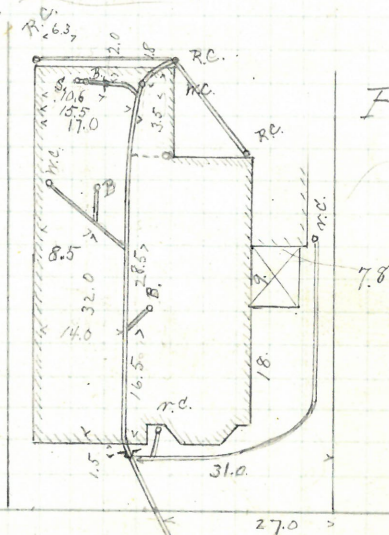
Closed " 10-1902

J. Deary & Co.

Closed 11 24-1913
 J. Denoy B. S. - Elmont

blotted "

J. D. Long B. S. - Pleasant



Plotted

74.0 west of 2nd
mth. west of Pallas St

Broadway

R. M. Sanders

21 Somerset St.

P. Frank Read J.S.

Permit No 1735

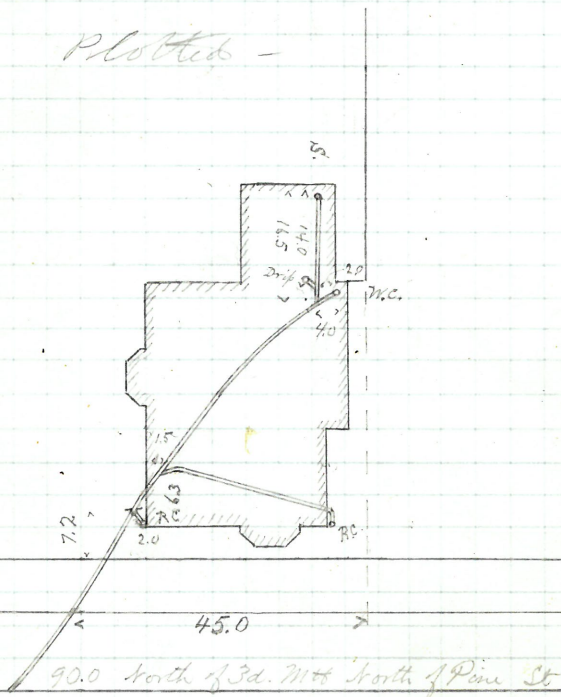
Cut at curb 10.4

Opened Sept 11 1876

Closed Sept 15 1876

F

Plotted -



— Somerset St. —

George Jones
406 High St.

H. d. P. Durfee J. L.

Permit No. 1738

Cut at curb 8.5

Opened Sept. 18, 1876

Closed Sept. 23, 1876

Reopened Mch 12, 1894

Closed Mch 13, 1894

E. C. Blackman J. L.

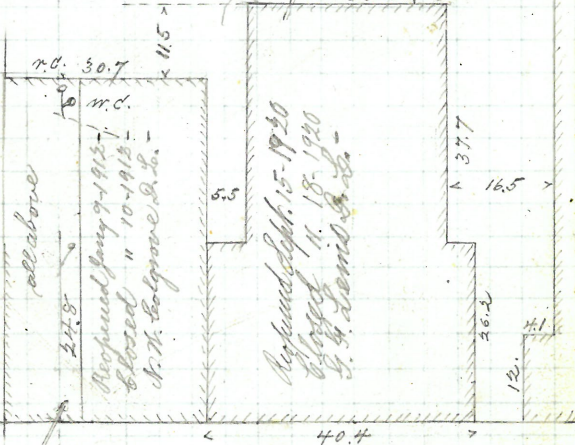
Reopened Jan 15, 1907

Closed " 16, 1907

E. Burlingame D. L.

Plotted

Opened Sept. 13, 1909
Closed " 13, 1909
E. W. Bolander D. L.
Blackburn



43.0 west of M.C. East of Lafayette St.

Could find no trace of the old road
set a bench. D. L. S.

— High St. —

Removed

151.

Ellen B. Light

136 Friendship St.

J. Frank Read D.C.

Permit No. 1739

Cut at curb 9.6

Opened Sept. 13, 1876.

Closed Sept. 15, 1876.

Reopened July 24, 1884.

Reopened Oct 2, 1928

Closed " 1928

R. H. Berry D.C.

V. Hatted -

Reopened Aug 1, 1898

Closed " 11, 98

J. F. Read D.C.

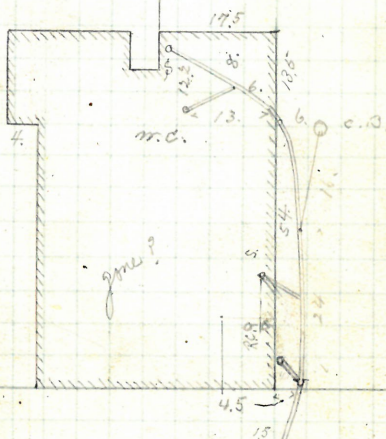
Work done under W. Bennett

to 728 on 15.309 3.21

Reopened Sept 24, 1931

Closed " 25 "

W. Bennett D.C.

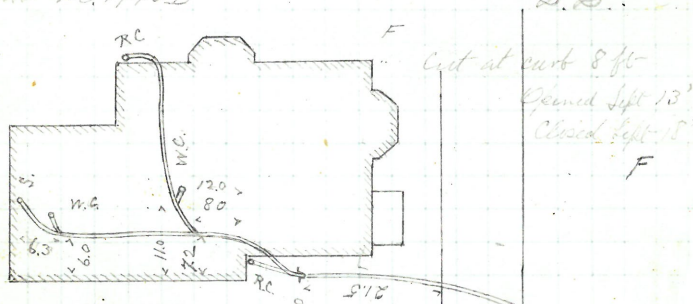


— Friendship St. —

303 Ezra S. Dodge
146 Point St
Abel W. Tripp

Permit No. 1740.B

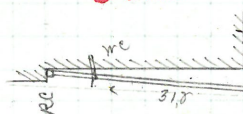
J.L.



Charles W. Williams - Extension of
150 Point St - Permit
Abel W. Tripp, D.L. - 1740
Opened Jan 29, 1878
Closed " 30 - 1878 Cut at curb

Plotter

GONE



St.

Plotter

Point St

10.5
above L.H.

Avery Pette

70 Dean St.

J. O'Donnell D.L.

Permit No 17413

cut at aug. 9.1

Opened Sept. 14, 1876

Closed Sept. 19, 1876

F

Reopened April 24, 1893

Closed April 24, 1893 J. R. Newman D.L.

Reopened Dec. 21, 1893

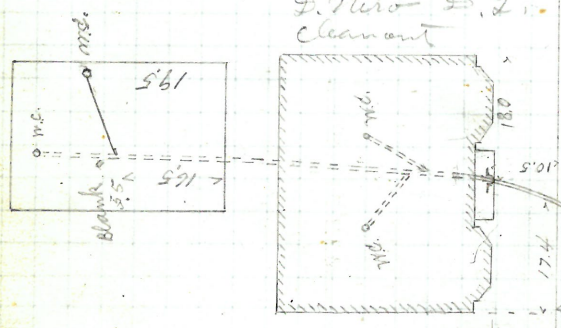
Closed " 21, 1893

Reopened Sept. 8, 1927

Closed " 8, 1927

D. Muro D.L.

clean out



Reopened - Aug 20 / 1937

Closed - Aug 20 / 1937

J. Riolo D.L.

Per. No. 17 / 02

J. Capaldi D.L.

clean

Carpenter St.

Enter Sewer 50 ft north of m.h. at Carpenter Street

6" Pipe 12 x 6 Branch

Elizabeth P. Vaughan

195 Waterman St.

Jason A. Blackmar D.E.

Permit No 1742

Cut at curb 6.8

Opened Sept. 15, 1876

Closed Sept. 20, 1876

Reopened May 24-1906

Closed " 24-1906

W. J. Hoagg D. E.

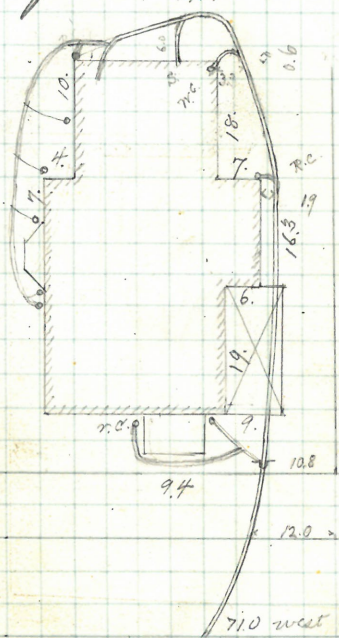
Plotted

Reopened Jan. 7, 1937

Closed Jan. 7, 1937

E. Purcell - Relay E.

22.5 40% v



7.0 west of 2nd M.H. water

Note a straight line was taken
and a 12.8 ft. plan in place of it

Baro Lt.

Waterman St.

Alfred Hicks

146-148

to the Fountain St.

John W. Briggner D.L.

Permit No 1743

Reopened Nov 5-1901

Opened Sept. 15, 1876

D. Holmes D.L.

Closed Sept. 16, 1876

Cleanout

Reopened & Closed Sept 11-1903

D. Holmes D.L.

Reopened & Closed Dec 3-1904

J. Deary D.L. - Cleanout -

Reopened Dec. 15-1909 -

Closed " 15-1909 -

D. Holmes D.L. - Cleanout -

Reopened Nov 5-1914 -

Closed " 9-1914 -

Geo. F. Lewis D.L. - 37.1

Reopened Sept. 13-1916
Closed " 11-1916
A. Hill D.L. - Cleanout

Plotted

47.8

43.4

37.4

40.

Hayden Street

Fountain St.

GONE

Hires of B. M. Barrow

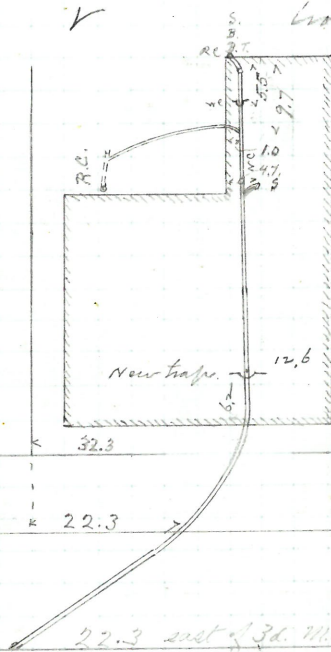
#279 Washington St
Frank Reed S. L.

Permit No. 1747.

Set at post 25
 Opened Sept. 20 1876 Reopened July 22/29
 Closed Sept. 23 1876 closed " " / 29
 Reopened Oct. 24 - 1878 W. Keller & L.
 Closed " 24 - 1878

Reopened Dec 16/91 by B. Brady

Cloud "19" Vitrified pipe taken and
 Protected lines relaid with
 iron pipe from
 sewers to a
 few ft beyond
 new trap.
 Old trap in
 front of house
 taken up.



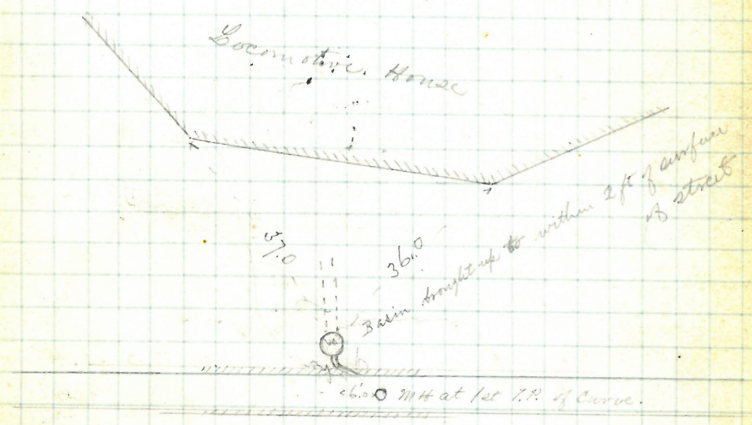
— Washington St —

N. Y. B. + P. R. R.
Locomotive House Cove St.
Sol. Thornton
J. S.

Permit No. 1748
Opened Sept. 20. 1876
Closed Sept. 21

F

Plotted
✓



— Cove St —

REMOVED

Samuel E. Hall
#78 1/2 Central St
Judson & Blackmar
J.L.

Permit No. 1750.

Cut at curb 10.3

Opened Sept. 20 1876

26

F

Reopened March 5-1884

" Feb 16/93, by T.J. Hudson.. (2 WC)

Reopened Aug. 23-1927

Closed 11 1944

J.H. Bolger & S.L. Cronmunk

Reopened Feb 15

Closed Nov 14/33

M. McHally

Plotted - Reopened Nov 18, 1927

Closed Nov 18, 1927

E. Gibbons & L. Chan

Reopened Nov 10, 1930

Closed " 12/ "

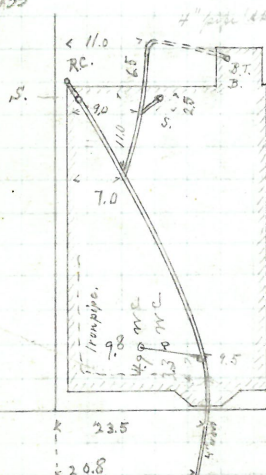
J. Leary & L. Chan

Reopened Dec 17, 1931

Closed " 21/ "

J. Leary & L. Chan

Planned with iron
above collar bottom



— Central St. —

7 Sutton st.

Opened Sept. 22, 1876

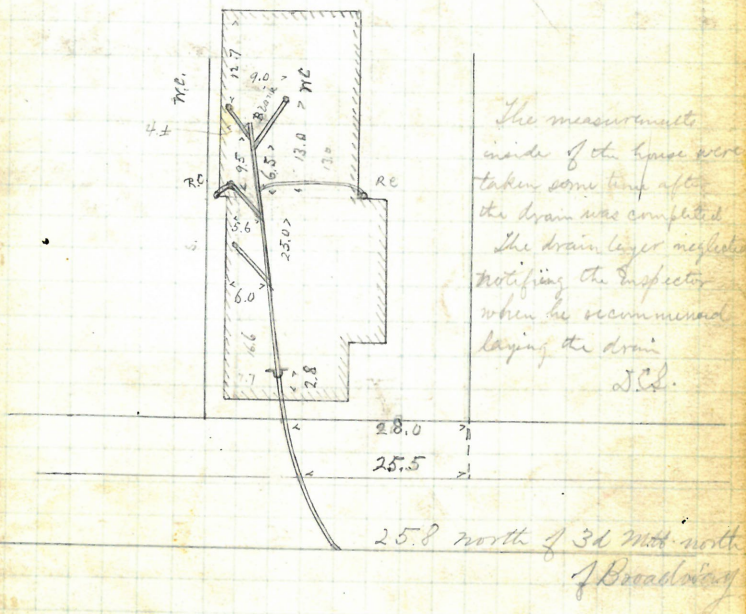
Colored about Nov. 1, 1876

Reopened Oct. 10 - 1879

6 June 12 - 1878

F

Plotted



25.8 north of 3d mt. north
of Broadway

— Sutton St. —

Samuel James
130 South St.
Fred. P. Surfe
D.L.

Permit No. 1753

Opened Sept. 25th 1876

Re Sept 23-1889 by Brady Closed Oct. 9th 1876
Cut at curb 9.9

Reopened & Closed Dec. 28-1900-

M. H. Chadsey D. L.

Reopened June 21-1901

Closed " 25-1901 J. L. M. Carthod. L.

Reopened July 24/29

Closed " 27/29

F. Dupuis

See: 3262

See: 37

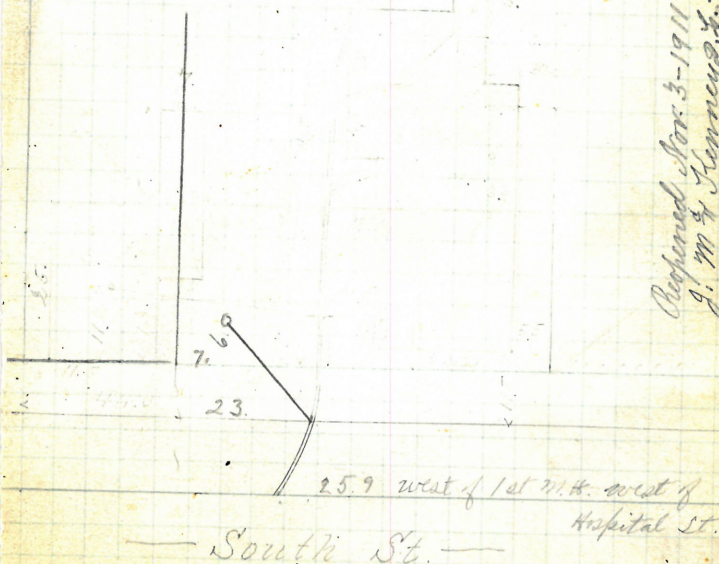
Plot No. 103

See: 3262

37

Plot No.

Reopened Nov. 3-1911-
J. M. & Hennessey D.L.



GONE

165

Lafayette Aspinwall
34 Carpenter St.
Frank Read J.L.

Permit No. 1756

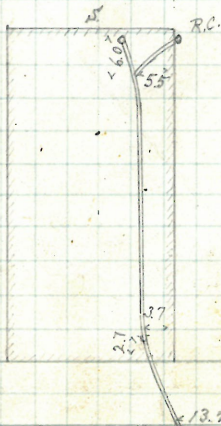
Opened Sept. 25, 1876

Cut at Curt 9.3

27

F

Plotted



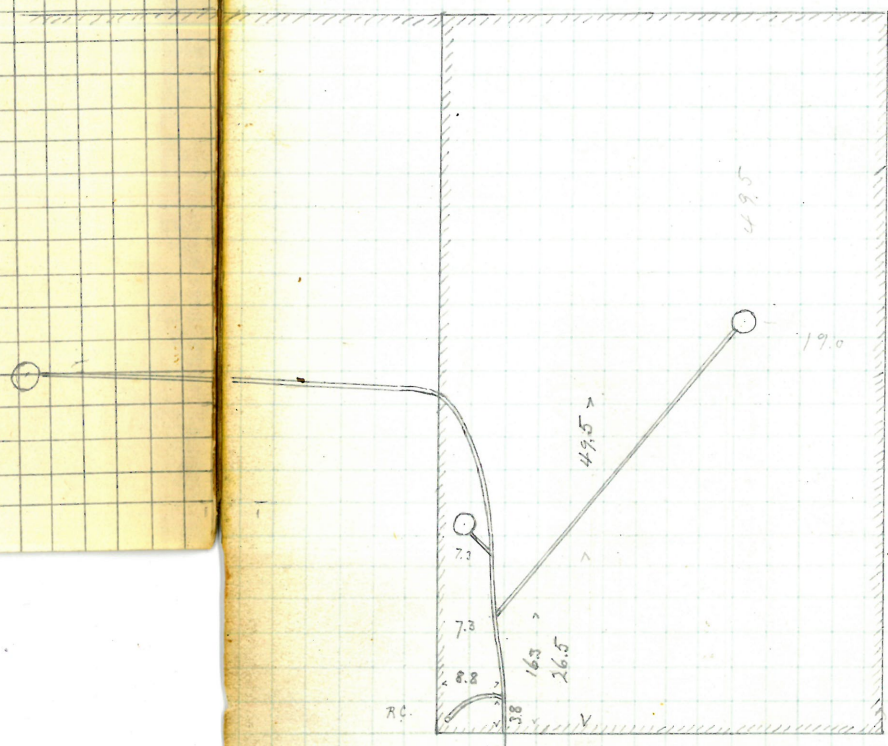
102.3 west of M.H.
east of Carpenter St.
Shepard

— Carpenter St. —

his house removed and a new one built; but
rains were laid, and cellar bottom concreted,
for Sept. 8, 1876, when inspector was notified.

Continued from page 113

F



Plotting
✓

P. - 157
6

19
49.5 167

City of Providence
Ward Room ~~Section 9~~ Pallas St.
Thomas Phillips 740

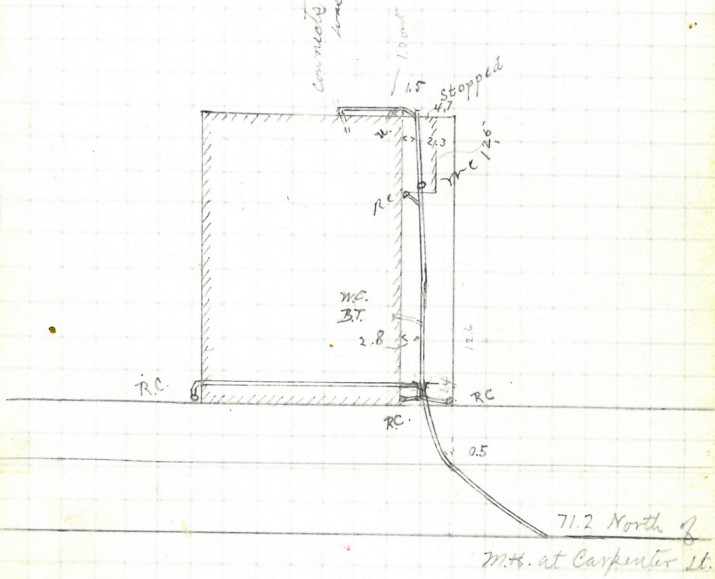
Permit No. 1757

Re Mar 11 - 1889
by J. A. Blackman

Opened Sept 26
Closed Sept 30
Cut at Curt 9.2

Plotted
✓

Concrete ditch previously laid
with water from stable

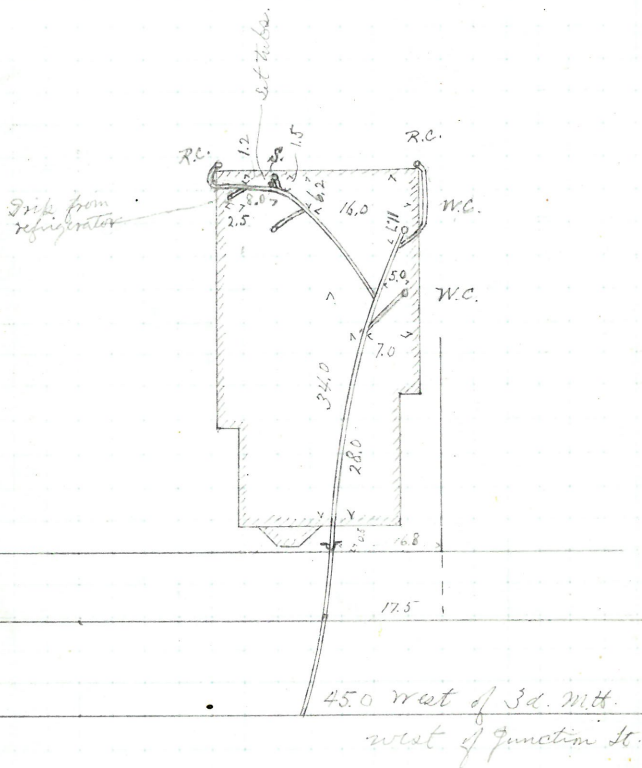


— Pallas St —

71.2 above initial Carp

Opened Sept. 25
Closed Oct. 2

Permit No. 1743
 Ringed June 6, 1928 Cut at east 9.6
 Closed June 6, 1928 F
 J. J. Baharuta, D.L.
 Shear out Plot 10



Bratigham St.

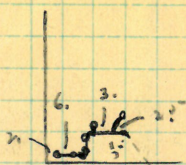
Swedish Baptist Church

217-19 Friendship St.

Opened
Closed Jan 3/31

J. Matzner

$\frac{182}{26}$



FRIENDSHIP ST.

$\frac{182}{26}$ ✓

X1571

Opened 11/8/63

Closed 11/9/63

D.L.V. Pono

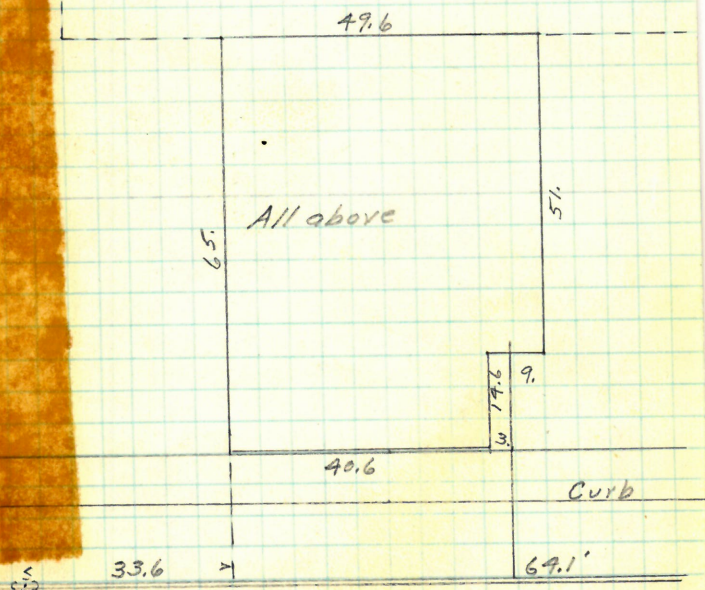
6" Iron

Owner

French + Mackenzie
63-67 Friendship St.

Relayed with iron.

Outlet Garage



Enters Sewer 64.1' South of 2nd M. Hole
South of Dorrance St.

	Tower			St.			Pole			S2
	m	h	h	m	h	h	m	h	h	
1										
at	7.1	10.1		8.			64.5	71.4		11
Thru	284	31.3					86.3	89.3		
	49.7	52.7		7						
	67.0	70.0					4.4	7.4		
	98.5	91.5					25.8	28.8		
2							47.5	50.5		
	7.5	10.5					69.0	72.0		
	277	30.5								
	49.0	52.0								
	67.0	70.0								
	86.4	89.3								
3										
	10	13								
	31.0	34.1								
	49.0	52.0								
	70.0	73.0								
4										
at	48.8	51.6								
Thru	49.6	72.4								
	90.6	93.5								
5										
	22	10.0								
	28.0	31.0								
	44.3	51.3								
	66.4	69.4								
	84.4	87.1								
	7.3	10.0								
	27.8	30.4								
	48.0	51.0								
	66.0	69.0								
	88.0	91.0								
7										
	7.0	10.5								
	28.3	31.1								
	44.8	52.0								
	67.0	70.0								
	84.5	87.7								
8										
	7.6									
	25.3	28.5								
	45.4	48.4								

53. 81.

~~Barney~~ ~~page 123~~ ~~142~~

Blackmer ~~141~~ 141

~~Rahol~~ ~~125~~

Hart 132 133 134

O'Sullivan 139

Surge 138

Knablin 167

Barney 123



Self 119

Index.

A.

Arnold No. 101	Philander Barney	April 5, 1876	17
Arch No. 12-16	Samuel B. Swan	May 3, 1876	46
Arch No. 26	C. W. Arnold	May 8, 1876	52
Arch No. 27	J. E. Crandall	May 11, 1876	54
Arch No. 28	John G. Ladd	May 17, 1876	60

Arch No. 22

Arch No. 21-23

Atwell Ave. No. 5

Atwell Ave. No. 231-233

Aborn cor. No. 44 Sabin

W. E. Lovegrove May 31, 1876 71

Allen Chace June 26, 1876 99

Mary J. Gardiner Aug. 1, 1876 125

John Monahan Aug. 1, 1876 126

W. R. Rice & Ida P. Foster Sept. 11, 1876 142

B.

Broadway No. 104

Broadway No. 101

Larned Williams March 27, 1876 6

W. E. Barrett Sept. 1, 1876 137

Broadway No. 123	Mary D. Mathews	Sept. 11. 1876	147
Broadway No. 199	W. A. Chapman	July 26. 1876	120
Broadway cor. Bradford	D. C. Wood	Apr. 26. 1876	35
Borden N.W. cor. May	Mary Murray	March 30. 1876	11
Borden S.E. cor. Plane	Est. Thomas Rogers	May 30. 1876	70
Benevolent No. 94	Mrs. C. R. Goddard	June 26. 1876	97
Bassett No. 13	Edward Field	July 10. 1876	104
Broad Nos. 282-284	Beriah Wall	July 18. 1876	107
Broad Nos. 398-402	Mary S. Blake	Aug. 11. 1876	133

Brook cov. No. 90 Angell

Bridgham No. 71

Bridgham Nos. 76-78

Bridgham No. 95

Blackstone H. 150 ft. W. of Hawkins

Thomas Harris July 24, 1876 116

Sam'l. E. Kelley July 27, 1876 118

George W. Arnold Aug. 1, 1876 124

Benj. Richardson Sept. 25, 1876 168

Wm. R. Costigan Sept. 25, 1876 162

C.

Carpenter No. 143

Carpenter No. 147

Catherine Gleason Apr. 12, 1876 23

Abner H. Angell May 29, 1876 69

Carpenter No. 341	Lafayette Aspinwall	Sept. 25, 1876	165
Cove St. Locomotive House	N. Y. R. & P. R. R.	Sept. 20, 1876	159
Central No. 412	David G. Hall	Sept. 20, 1876	160
Central No. 15	C. F. Williams	Aug. 29, 1876	136
Clemence No. 38	W. L. Burgess & L. A. Tillinghast	Sept. 9, 1876	144
Clemence Coal No. 15-87-91 Mathewson	A. F. Adie	May 24, 1876	66
Carpenter No. 119	Annie E. Wood	June 1, 1876	73
Charles No. 134	Ellen M. & E. Roy	June 6, 1876	77
Charles No. 124-122	John Armstrong	June 7, 1876	78
Charles No. 126-128	John Doyle & wife	June 9, 1876	80

Charles No. 201

Charles N.W. cor. Orms

Chestnut No. 142

Chestnut No. 73

Courtland cor. No. 199 Broadway

Crazy Street Baxter Block

Crazy Street

Cady cor. No. 187 N. Main

Clifford No. 174

John Donovan

Michael M^r. Hale

Edwin Greene

C. A. Robinson

W. A. Chapman

Meek & Savings Bank.

Bernard O'Byrne

Martha Geomane

Benjamin W. Kase

July 25, 1876

June 13, 1876

Aug. 15, 1876

Sept. 9, 1876

July 26, 1876

Apr. 28, 1876

May 7, 1876

May 8, 1876

May 20, 1876

117

86

132

145

134

112

50

53

63

D.

Dyer No. 245

Dawson cor No. 46. Courtland

Dean No. 70

Edward Pearce July 17, 1876 105

Edwin Knight Aug. 2, 1876 127

Avery Pottis Sept. 14, 1876 154

E.

Edin Nos. 85-89

Eddy No. 386-392

Thomas Cosgrove July 25, 1876 115

Eben Simmins Aug. 29, 1876 135

F.

Friendship No. 222	Mary J. Gardner	Apr. 3, 1876	15
Friendship No. 200	Mrs. J. Manchester	Apr. 11, 1876	22
Friendship No. 219	Harriet F. Pratt	Apr. 13, 1876	26
Friendship No. 132	E. N. Steere	June 12, 1876	83
Friendship No. 129	E. A. Robinson	June 14, 1876	88
Friendship co. No. 58 Richmond	Sackett, Davis & Co.	June 14, 1876	89
Friendship No. 221	John Russell	June 21, 1876	93
Fountain Nos. 410-4114	John Wilson Smith	July 1, 1876	101

Friendship No. 252	Catherine L. Wild	July 17, 1876	106
Friendship No. 232	Caleb Tammam	Sept. 5, 1876	141
Friendship No. 214	James P. Rhodes	Sept. 6, 1876	143
Friendship No. 136	Ellen Bligh	Sept. 13, 1876	151
Friendship S.W. & N.W. cor. Eddy	French & Mackenzie	June 1, 1876	72
Friendship cor. Page	Kendall Mfg. Co.	June 3, 1876	75
Friendship cor. No. 58 Richmond	Sackett, David & Co.	June 9, 1876	79
Friendship cor. No. 53 Richmond	Sarah C. Anthony	June 13, 1876	85
Friendship N. side from Page to Richmond	Thomas A. Richardson	June 15, 1876	90

Friendship N. side from Page to Richmond	Thomas A. Richardson	June 22, 1876	94
Fountain No. 183	George S. Macwood	July 27, 1876	119
Fountain No. 82-80	Alfred Kieck	Sept. 15, 1876	156
Fountain cor. Union	F. H. & C. K. Richmond	Sept. 25, 1876	164
Federal cor. Bradford	May C. Alverson & J. A. Williamson	Apr. 6, 1876	18
Federal cor. Bradford	John H. Eddy	Apr. 14, 1876	25
	G.		
Governor S. E. cor. Williams	Thomas B. Ross	Apr. 3, 1876	14

H.

Newer No. 23	George W. Bowen	Apr. 25, 1876	33
Newer Street	Catherine Gleason	July 21, 1876	111
High No. 254	David Cady	Aug. 4, 1876	129
High No. 344	High Street Bank	Aug. 8, 1876	130
High No. 406	George Jones	Sept. 18, 1876	150
High No. 691	Wm. Buntoun	Sept. 12, 1876	153
High No. 469	E. F. Manchester	July 5, 1876	102
High N.E. cor. Bridgham	Chas. W. Moore	June 13, 1876	87

Jackson cor. No. 131 Washington
Jackson S.W. cor. Garden

J.

J. A. Randall

Feb. 28, 1876

7

Amos C. Barstow

Sept. 2, 1876

139

H.

Knight cor. No. 136 Carpenter

C. W. Harris

Apr. 27, 1876

38

Knight Nos. 58-62

Pardon Angell

Sept. 1, 1876

138

L.

L. H. Hitt No. 69

Thomas McCabe

Feb. 29, 1876

10

Maple cor. No. 69 Beacon

Mathewson No. 7

Meeting cor. No. 172 Benefit

Meeting No. 52

Middle near Eddy

North Main No. 273-277

W.

G. M. Lincoln

J. S. Collins

Heine W. R. Danforth

John Fadden

A. C. Mathewson

Mch. 29, 1876

Apr. 7, 1876

Apr. 27, 1876

July 24, 1876

June 30, 1876

9

19

41

109

100

N.

St. John's Church

Apr. 26, 1876

36

Lippitt No. 28	Michael McGarahan	Apr. 17, 1876	16
Lippitt No. 42	John Baxter	Apr. 21, 1876	28
Lippitt No. 41	Patrick W. Baxter	Apr. 21, 1876	31
Lippitt cor. N. Main	Wm. J. Dexter	May 5, 1876	49
Lockwood No. 54	Michael Carter	May 13, 1876	57
Lockwood No. 141	Allen Shaw	July 21, 1876	112
Lester, house No. 178 Cranston	Chas. A. Hubbard	May 22, 1876	64
Langley near Hospital	J. Frank Dearborn	May 15, 1876	59
Langley N.E. cor. Hospital	James Buttz	June 10, 1876	81

North Main No. 516

Asahel Hawkins May 11, 1876 55

North Main No. 508

Steven M. Green May 19, 1876 62

North Main No. 513

Lucy W. Wilson Sept. 18, 1876 157

North Main cor. Olney

Steven M. Greene June 1, 1876 61

O.

Olney cor. No. 167 Prospect

Ediza King Apr. 10, 1876 21

P.

Point No. 73	Thomas Cosgrove	Feb. 29, 1876	8
Point No. 51	Andrew Briggs	May 5, 1876	48
Point No. 63	Jane Cox	May 21, 1876	65
Point No. 77	Abby A. Ham	July 7, 1876	103
Point No. 146	Ezra L. Dodge	Sept. 13, 1876	152
Pallas St. Hose Station No. 9	City of Providence	Sept. 26, 1876	167
Pallas Nos. 6-8-10	Thomas F. Pierce	June 26, 1876	96
Providence Nos. 22-26	Thomas Little	June 26, 1876	98
Providence co. Lockwood	Mary A. & Wm. C. Greene	June 20, 1876	92

Pond No. 130	Sam'l. B. Surfer	July 18, 1876	108
Pond No. 141	Charles Law	May 29, 1876	68
Pond S.E. cor. Winter	Chas. W. Stwood	Apr. 26, 1876	37
Pond No. 129-131	Maria Wheaton	Apr. 27, 1876	39
Pearl No. 130	P. A. Mayfield	Apr. 27, 1876	40
Pearl No. 89	E. Tallman	June 5, 1876	76
Pearl N.W. cor. Friendship	James A. Packard	Apr. 10, 1876	20
Pearl N. cor. Providence	Evangelical Advent Church	Apr. 14, 1876	27
Prairie Ave. No. 33	Daniel C. B. White	Apr. 25, 1876	32

Prairie Ave. S.W. cor. Providence	F. P. Duffee	Feb. 30, 1876	12
Pine No. 143	A. F. Palmer	Apr. 1, 1876	13
Pearl S. cor. Pine	Asa Towne	May 1, 1876	44
Pine No. 400	Chas. W. Holbrook	May 3, 1876	47
Pine No. 350	Odney Read	July 24, 1876	114
Pine No. 131	Thomas Cogrove	Sept. 9, 1876	146
Petite No. 5	Thomas Kilkeny	July 29, 1876	121
Page No. 29	H. F. Carpenter	June 12, 1876	82

Thayer Street

Thayer June, Hope (Drinking trough)

Thayer S.W. cor. Power

Thayer N.W. cor. Power

J.

Brown University April 12, 1876 24

City of Providence June 19, 1876 91

John S. Unwin July 31, 1876 123

Charlotte R. Goddard Aug. 10, 1876 131

V.

Vinton No. 35

Helen A. Hartshorn April 20, 1876 29

W.

Waterman No. 411	Chas. G. King	April 28, 1876	113
Waterman No. 195	Elizabeth P. Vaughan	Sept. 15, 1876	155
Washington No. 167	Heirs B. M. Boume	Sept. 20, 1876	158
Washington No. 168-178	A. C. Barstow	July 28, 1876	122
Worcester No. 10	Billings Bros.	July 21, 1876	113
Worcester No. 10.	Billings Bros.	July 21, 1876	166
Walling No. 46	Michael Campbell	May 2, 1876	45
Walling cor. West River	Michael Mc Elmod	May 24, 1876	67

Somerset No. 24	Aka. K. Lilley	Sept. 13, 1876	149
Sutton No. 7	Westminster Bank	Sept. 22, 1876	161
Sutton No. 14	Harriet A. Baker	Apr. 26, 1876	34
South No. 85	John Salisbury	May 7, 1876	51
South No. 69	Mathew Campbell	May 13, 1876	58
South No. 53	John S. Palmer	June 1, 1876	74
South No. 130	Samuel James	Sept. 25, 1876	163
South cor. Hospital	W. H. & E. B. Hathaway	Aug. 3, 1876	128

R.

Richmond W. co. Friendship
Richmond No. 1419

Chas. E. Carpenter & S. B. Anthony June 12, 1876 84
Sam'l. W. Pease July 20, 1876 110

S.

Somerset co. No. 467 Pine
Somerset Sheet
Somerset No. 23
Somerset No. 21

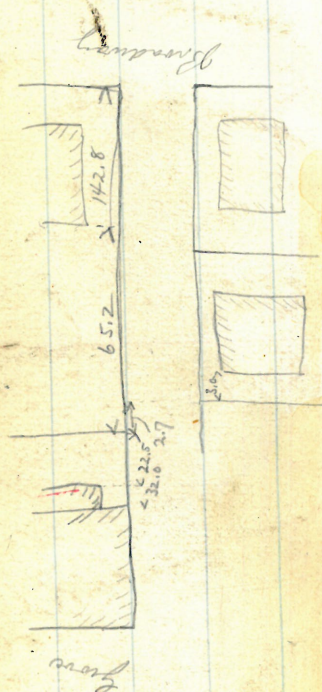
Charles. H. George Apr. 24, 1876 30
F. J. Macey May 13, 1876 56
S. A. Elobree Sept. 4, 1876 140
R. M. Sanders Sept. 11, 1876 148

Wickendon No. 13-15

Hannah Warren June 26. 1876

95

Dates in this book from
Mch. 27, 1876 to Sept. 25, 1876.



24
8
25 x 38
13

6.50
5.40
11.90
5.00
6.40 80 n
3.40
100 3.00 C

03 ft profit
2
1 4

6.39
1.8
3.00
24 12

5.40
3.80
21.6
160
7
9.50 84
10

28.5
29
2.5

29
29.3
5.5

164
127