

RESOLUTION OF THE CITY COUNCIL

No. 335

Approved June 12, 2018

WHEREAS, The State of Rhode Island proposes to retrofit certain stormwater facilities to benefit Roger Williams Park Ponds, all in compliance with a Consent Agreement entered between the Department of Transportation and the Department of Environmental Management addressing various stormwater issues; and

WHEREAS, Said improvements will include the construction of a stormwater “best management practice” facility to capture runoff from the on and off ramps located at the northeast junction of Route 10 and Elmwood Avenue.

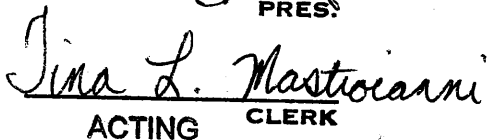
NOW, THEREFORE, BE IT RESOLVED, That His Honor, the Mayor, is authorized to execute a Construction and Maintenance Agreement with the State of Rhode Island with respect to the Roger Williams Park Ponds/Route 10 Stormwater Retrofit. Said Agreement shall be substantially in the form exhibited in Attachment “A”, subject to such modifications as may be recommended by the Mayor and/or the Law Department.

IN CITY COUNCIL

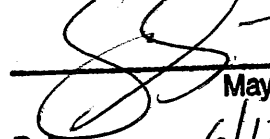
JUN 07 2018

READ AND PASSED


PRES.


ACTING CLERK

I HEREBY APPROVE.



Mayor
Date: 6/12/18

**ROGER WILLIAMS PARK PONDS/ROUTE 10 STORMWATER RETROFIT
CONSTRUCTION & MAINTENANCE AGREEMENT
MUNICIPAL PROPERTY
STATE FUNDS**

by and between the
STATE OF RHODE ISLAND AND PROVIDENCE PLANTATIONS
and the
CITY OF PROVIDENCE

AGREEMENT entered into by and between the STATE OF RHODE ISLAND AND PROVIDENCE PLANTATIONS (hereinafter called the STATE), through its Department of Transportation (hereinafter called RIDOT) and the CITY OF PROVIDENCE (hereinafter called the MUNICIPALITY) to construct one (1) stormwater best management practice (BMP) (hereinafter called the PROJECT).

WHEREAS the STATE, in cooperation with the MUNICIPALITY, has selected the above-referenced PROJECT in Providence for improvements, and

WHEREAS the STATE will accomplish said improvements with State funds, subject, however, to various conditions including that the MUNICIPALITY shall provide for the proper maintenance after completion of the PROJECT, and

WHEREAS the PROJECT consists of the construction of one (1) stormwater BMP (designated 7B on Figure 1) to capture runoff from the on and off ramps located at the northeast junction of Route 10 and Elmwood Avenue in the City of Providence (see Figure 1 for general PROJECT location).

NOW THEREFORE, the STATE and the MUNICIPALITY hereby agree as follows:

SECTION I - GENERAL PROVISIONS

1. The STATE, through its Contractor, will construct the improvements in accordance with the Plans and Specifications for the PROJECT.

2. The MUNICIPALITY will allow the STATE to enter onto its property for purposes of constructing the PROJECT.

3. The Design of the PROJECT will conform to all STATE design standards and policies.

4. The STATE will advertise and award the PROJECT in conformance with the provisions of Title 37, Chapter 2 of the Rhode Island General Laws. Thereafter, the STATE shall issue a Notice to Proceed to its contractor (the "Contractor").

5. The STATE will submit to the MUNICIPALITY Plans, Specifications and Estimates (hereinafter PS&E) for review and concurrence. Such submissions shall include but not be limited to an Operation & Maintenance Plan, all engineering, all permits, landscaping and architectural drawings and

documents.

6. The MUNICIPALITY will respond with review comments to the submissions within twenty (20) calendar days of their receipt.

7. The STATE will obtain all permits and perform subsurface utility location exploration at its own expense.

8. The STATE will conduct routine and final inspections of the PROJECT with the Contractor and the MUNICIPALITY to ensure the PROJECT was completed in conformance to the plans and specifications for the PROJECT.

9. Upon completion of the PROJECT, the STATE at its sole cost and expense shall remove any rubbish and debris from the PROJECT limit of work and associated areas needed for access to the site for construction operations, fill in all holes and depressions thereon cause by the State, level off the surface of the PROJECT limits if necessitated by the STATE's activities, and return the PROJECT limits and associated areas needed for access to the site for construction operations to as good condition as was evident prior to this Agreement.

10. Upon Substantial Completion of the PROJECT, the MUNICIPALITY will:

(a) maintain, and if necessary, modify and/or reconstruct the stormwater BMP "RWP-7B", in accordance with the long-term RIDOT Operation and Maintenance Plan, at its own cost and expense, after construction is completed and will make ample provision each year for such maintenance;

(b) submit reports of all operation and maintenance activities related to stormwater BMP "RWP-7B" to RIDOT and the Rhode Island Department of Environmental Management.

11. All work performed under this Project is subject to the approval and inspection of the STATE in accordance with the provisions of the Rhode Island Department of Transportation Standard Specifications for Road and Bridge Construction, which is hereby made a part of this Agreement by reference.

12. The City of Providence will take all necessary steps to receive authority from the Board of Park Commissioners to enter into and execute this Agreement including, but not limited to, submission of this Agreement to the Board of Park Commissioners for ratification and submission of proof of such authority to the STATE prior to PROJECT advertisement.

13. The City of Providence will take all necessary steps to receive authority from the City Council to enter into and execute this Agreement including, but not limited to, submission of this Agreement to the City Council for ratification and submission of proof of such authority to the STATE prior to PROJECT advertisement.

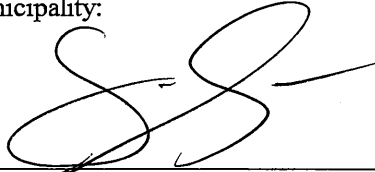
14. This Agreement may be amended only by written agreement of the parties.

IN WITNESS WHEREOF, the STATE and the MUNICIPALITY have caused this AGREEMENT to be executed by their duly authorized officials as of the _____ day of _____, 2018.

Recommended for Approval:

Chief Engineer of Infrastructure
Department of Transportation

Municipality:

By: 

Mayor of Providence
Chairman, Board of Park Commissioners

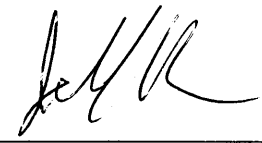
By: 

President
Providence City Council

Approved as to form:

Assistant Director of Legal Services
Department of Transportation

Approved as to form:



City Solicitor
City of Providence

Approved:

Director
Department of Transportation

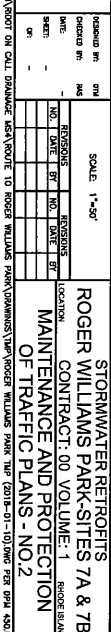
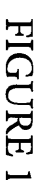
PROJECT DESCRIPTION

ROGER WILLIAMS PARK PONDS/ROUTE 10 STORMWATER RETROFIT

This PROJECT, located in the County of Providence, City of Providence, Rhode Island (see Figure 1), includes installation of one (1) drainage best management practice, which will treat collected stormwater runoff from portions of the on ramp to and off ramp from Route 10 and direct it to the western end of Roosevelt Lake, within Roger Williams Park.

The PROJECT includes, but is not limited to, installation of a diversion manhole and diversion pipe. In addition, the PROJECT, referred to as 7B on Figure 2, includes construction of a Wet Vegetated Treatment System (WVTS), on City property. The work for the WVTS includes but is not limited to installation of a sedimentation forebay, overflow spillway, soil erosion and sedimentation controls, and wetland plants. A vegetated buffer along the edge of the pond (Roosevelt Lake) will also be installed in the areas of the RWP-Q outfall and the 15" pipe outfall near the proposed WVTS and extending linearly at least one hundred (100) feet from each outfall.

1. ALL TEMPORARY TRAFFIC CONTROL, SET-UPS AND DEVICES AND THEIR INSTALLATION, MAINTENANCE, AND REMOVAL MUST BE IN ACCORDANCE WITH THE LATEST EDITIONS OF THE MANUAL OF TRAFFIC CONTROL DEVICES (MUTCD) WITH ALL REVISIONS, AND THE MOST STANDARD DETAILS AND PLANNING FOR THE DEVELOPMENT OF TRAFFIC MANAGEMENT PLANS.
2. CHANNELIZING DEVICES ARE NOT TO EXCEED 8 FEET/CENTRIZED CONES OR BARRIERS, THE SPACING OF THE DEVICES SHALL BE 30 FEET, AND A MINIMUM OF 10 FEET OF THE SPREAD WHEN USED FOR TRANSVERSE CHANNELIZATION.
3. ALL WARNING SIGNS SHALL HAVE AN ORANGE CHANNELIZATION WITH BLACK LEGEND AND BORDER. ALL SIGN LEGENDS, BORDERS AND MOUNTING SHALL BE IN ACCORDANCE WITH THE MUTCD.
4. ALL SIGNS SHALL BE MOUNTED ON SUITABLE TEMPORARY SUPPORTS SUCH THAT SIGNS ARE CLEARLY VISIBLE TO APPROACHING TRAFFIC.
5. ALL TRAFFIC LIGHTS AND PEDESTRIAN CONNECTIONS THROUGHOUT THE PROJECT SHALL BE MAINTAINED AND OPERATIONAL THROUGHOUT THE PROJECT.
6. ALL TEMPORARY TRAFFIC CONTROL DEVICES SHALL BE IN PLACE PRIOR TO THE START OF WORK.
7. ALL TEMPORARY TRAFFIC CONTROL DEVICES SHALL BE REMOVED AS SOON AS PRACTICAL WHEN THEY ARE NO LONGER NEEDED, WHEN WORK IS SUSPENDED FOR SHORT PERIODS OF TIME, TEMPORARY TRAFFIC CONTROL DEVICES THAT ARE NO LONGER APPROPRIATE SHALL BE REMOVED OR COVERED.



WENDY NILSSON
Superintendent of Parks

JORGE O. ELORZA
Mayor



**CITY OF PROVIDENCE
INTEROFFICE MEMORANDUM**

TO: Adrienne Southgate
FROM: Wendy Nilsson, Park's Superintendent
SUBJECT: MOA City of Providence & RIDOT - RWP Stormwater Retrofit Site 7b
DATE: March 19, 2018

Dear Adrienne,

Attached is the Memorandum of Agreement between the City of Providence Park's Department and RIDOT regarding RWP Stormwater Retrofit Site 7b (Figure #1 attached).

A motion was passed and approved today; March 19th, 2018 at the Board of Parks Commissioner's meeting regarding the MOA between the City of Providence and RIDOT. I recommend the City Solicitor sign it and thereafter, please send the document to the Mayor and Council President for signature.

I thank you greatly for all of your help!

DEPARTMENT OF PARKS

Roger Williams Boathouse | 1000 Elmwood Avenue Providence, Rhode Island 02905
401 785 9450 ph | 401 941 5920 fax
www.providenceri.com