

X.5385

Opened 12/23/57

Closed 12/23/57

Size 6" Vit

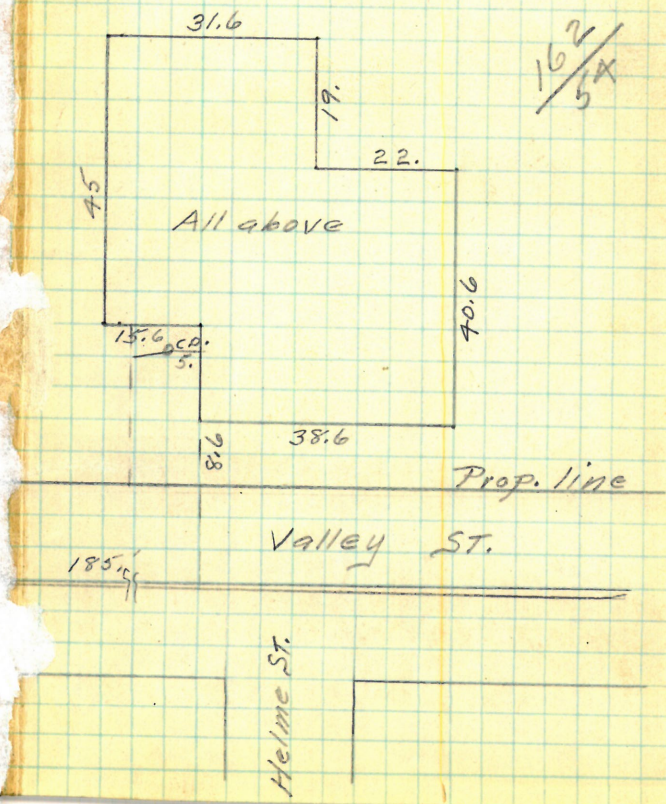
OWNER

Prov. Worsted Mills

166 Valley St.

L. Calabuog

Outside



BK # 698

1

Providence Worsted Mills Dyehouse
2-166 Valley St.
Patrick Turner D.L.
Permit 5385

Opened July 7-1889
Closed " 13-1889
Closed Sept 10/28
and
Keller D.L.

Reopened Mar 18. 1935
Closed Mar 18. 1935
J.A. Murray - 4" I

ended 8/12/54
ed 8/12/54
Asian add toilets

ended 12/24/52
sed 12/24/52
Max Goldberg
All Above

opened Oct 21, 1954
losed Oct 21, 1954
L. M. Goldberg
old 5" at 4" Iron
See inspector's return.



42, 503 M.H. at Hulme St.

Valley St.

Providence Worsted Mills
160 Valley St
Patrick Tunny D.
Receipt 5386

Opened July 8-1889
Closed " 9-1889
Reopened June 18-1923
Closed " 18-1923
G. L. Hodge & Co. Providence R.I.

Plotted.

Valley
100, 54 m H at Helms St.

7
x 5386

opened 10/22/58

Closed 11/3/58

Size 12" Vit + 4" Iron L. Colaluca D.L.

OWNER
Prov. Worsted Mills
166 Valley St.



43.

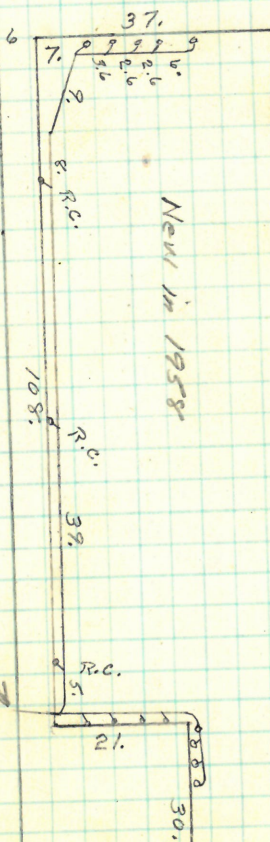
Valley St.

Into old 8" conns.

New in 1958

176-A

Existing Building



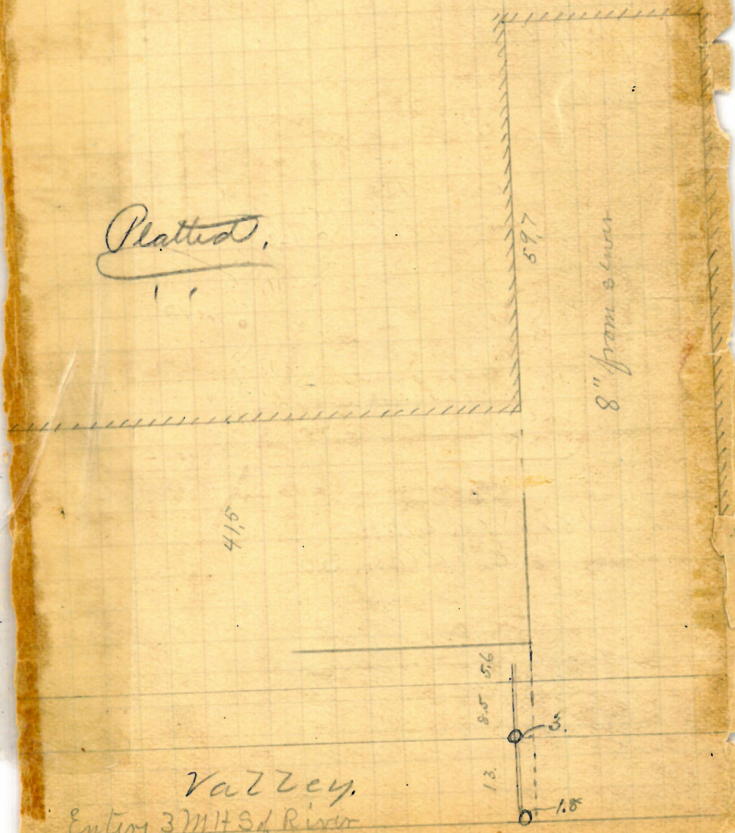
Providence Worsted Mills
142 Valley St.
Patrick Tierney D. L.

Permit 5387

Y cut at least 6.8"
Opened July 9-1889
Closed " 10-1889

Reopened Mch. 6th 1894 changed from 8" to 12" from
Closed Mch 13th 1894 } J. H. Read D. L.

Platted.



Valley.
Enters 3rd St. of River

A

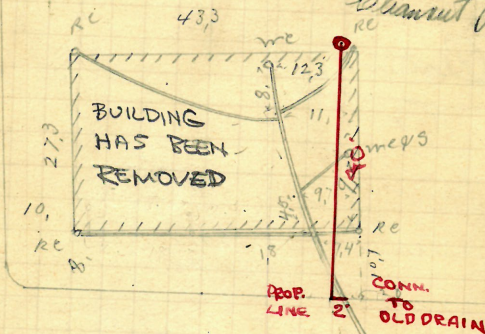
REMOVED

63 Michael J Brady
Blackstone Cdr Plain n e cor.
David E Barry D.L.
Perrin 5390

V Cut at curb 10.7
Opened July 10 - 1889
Closed " 13 - 1889
Reopened May 27 - 1908
Closed " 27 - 1908
M. J. M. Cormier D.S. Repair

Reopened Apr. 10/28
Closed
B. Doherty D.L.
Planned
Reopened Aug 8, 1928
Closed " 9, 1928
B. Doherty D.L.
Planned

Plotted
Reopened June 19, 1931
Closed " 22, 1931
B. Doherty D.L. Plan
Reopened Mar. 8, 1932
Closed " 11, 1932
B. Doherty D.L.
Planned



186.3 W of 27M H
E Plain St,

Blackstone St

REDOPENED
11/12/68
CLOSED
11/13/68

D.L.
ELISHA SCOLIARD
*X5390
4" IRON
ADD YARD BASIN

REMOVED TRAP

6

GONE

5

Fannie B. Souza
 75 Pearl Cor Vine W. Cor
 Jason A. Blackman D.L.
 Permit 5391

✓ Out-at-Curb 75

Opened July 10-1889

Closed " 11-1889

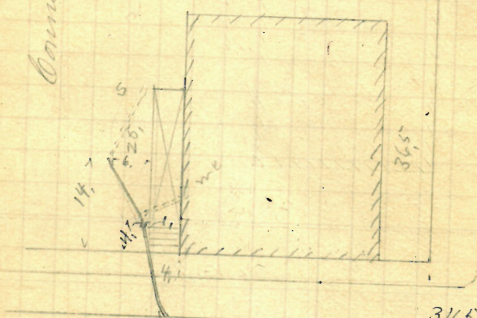
Reopened June 9th 94

Closed June 10th 94 } Cleanout
 C. A. Blackman D.L.

Plotted.

5" from sewer

Connects onto old drain for property
 running to Capital



34.5' W of 1114'
 " Pearl &

Cor was found 3' back

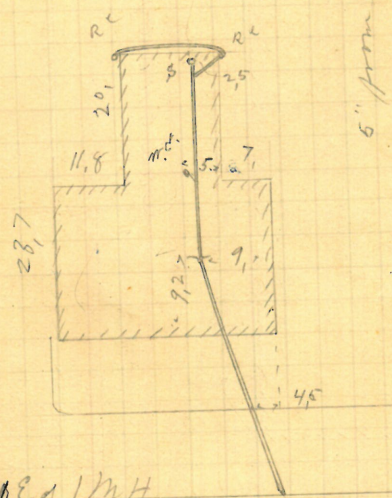
Vine St

Wm H. Peckham S.W. Cor.
83 John Cor Dove
7 rank Read D.L.
Permit 5393

Y. Out at curb 105
Opened July 18-1889
Closed " 20-1889
Reopened Nov. 9-1911
Closed " 9-1911
H. Hensley D. L.

Plotted.

Dove, St.



5402 1/2 M.H.
Hensley St

John St

8

GONE

PD

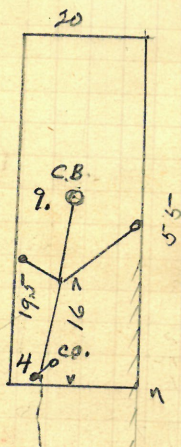
170A

10

Prov D. B. & Co.
 20 Sabin St. Cor Calender
 Patrick Tierney D.L. - Cor St Sewer
 Permit 5374

Opened July 13-1889
 Closed " 16-1889

Re Oct 31 1946 10%
 Clr Oct 31 1946 1%
 add 10% + 1% = 11%
 add 10% + 1% = 11%
 add 10% + 1% = 11%



Calender St.

Propped.

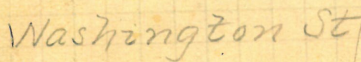


Stone Sewer

Sabin, St.

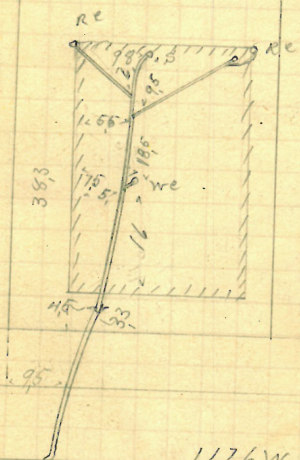
9

Prooted.



George W Taylor
 8 Ecor Fuller 42 Warren St.
 Jason A Blackmar DZ
 Permit 5-396
 Tent at Ensb 105
 Opened July 12-1889
 Closed " 15-1889

Plotted



Warren St

Providence Worsted Mills
173-Valley St.

Bernard Brady D.L.

Permit "5398"

V

Opened July 11-1889
Closed " 19-1889

Reopened Aug. 10-1906

Closed " 11-1906

J. Deary D.L. - Cleanout

Reopened Dec. 4, 1929

Closed " 7. "

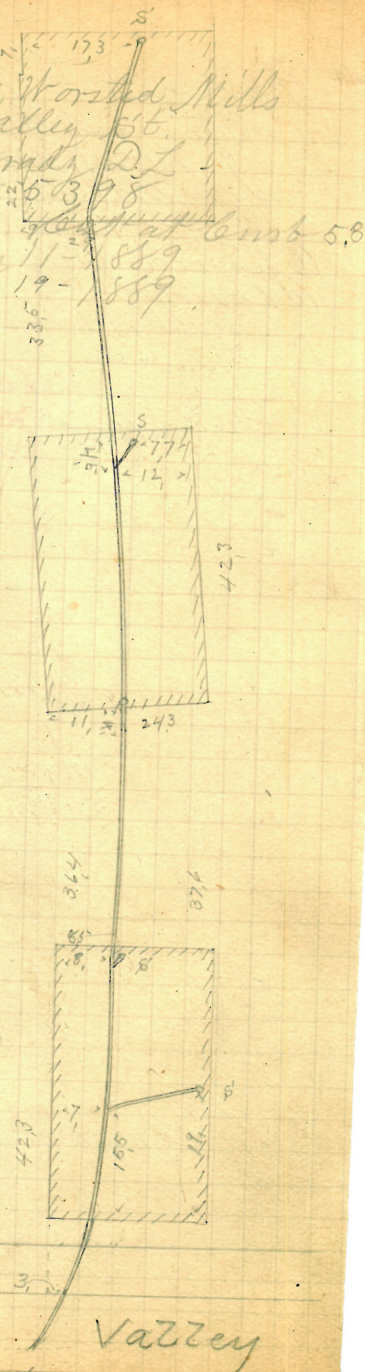
M. M. Wally D.L.

Cleanout

19 Reopened - Oct 23, 1944

17 Closed - Oct 23, 1944

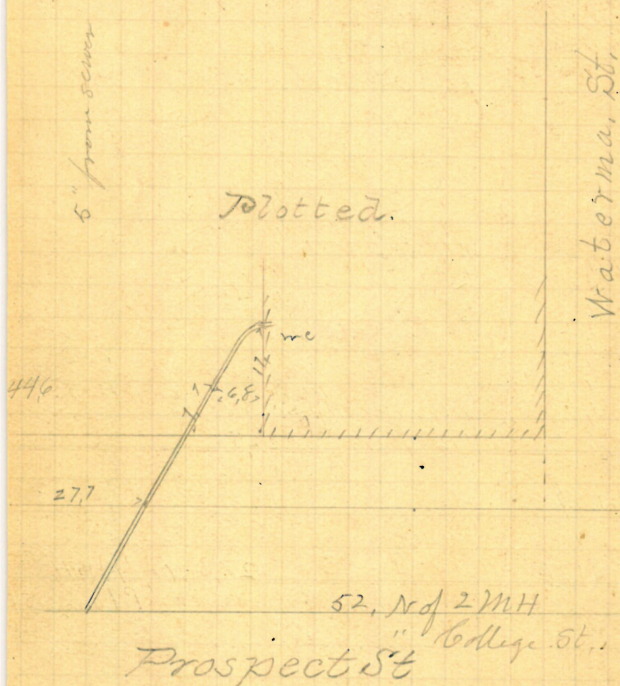
J. J. Barbarita - Clear



125.54 / M.H.
River

14.

J. W. C. Ely - SWCm.
 Prospect, cor⁶⁴ Waterman St. S.W.
 ✓ Ellery Millard D.S.
 Permit 5400
 Opened July 17-1889
 Closed " 24-1889
 cut at least 11.

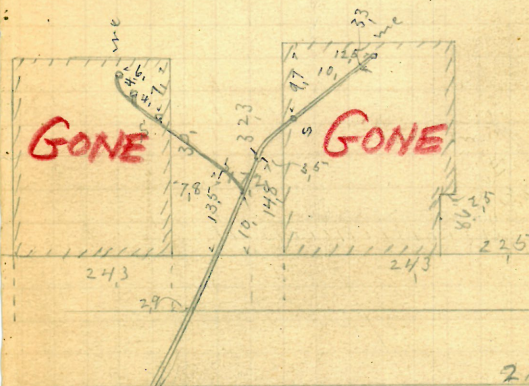


13.

GONE

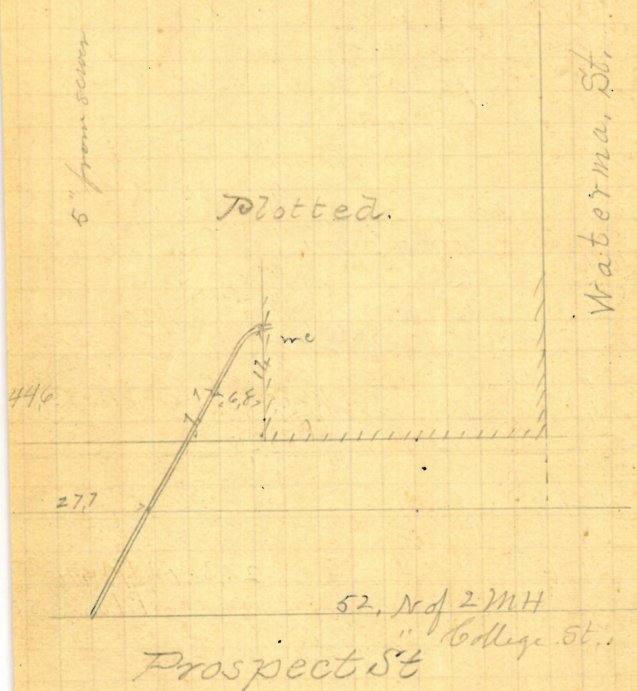
Richard Hayward
 # 159-16768 Pearl St
 Dania Bank Road D L
 Permit 5419
 V Cent at curb 104"
 Opened Aug 2-1889
 Closed " 11-1889
 Reopened & closed Oct 14-1899
 J. L. Read D. L. - Cleanout -
 Reopened & closed Sept 21-1903
 J. L. Deary D. L. - Cleanout -

Plotted.



Pearl St.

J. W. C. Ely - S.W.C.
 Prospect St. 61 Waterman St. S.W.
 Ellery M. D. S.
 Permit 5400
 Cut at least 11,
 Opened July 17-1889
 Closed " 24-1889

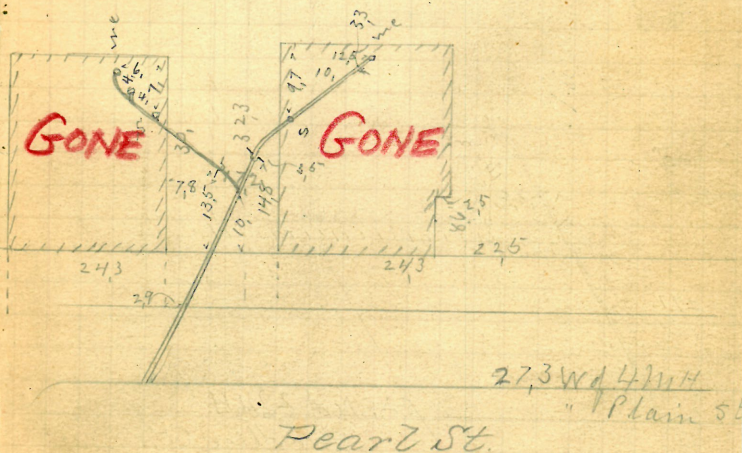


13.

GONE

Richard Hayward
 # 159-16th 68 Pearl St
 Darius Frank Read D.L.
 Permit 5419
 V Bent at curb 104"
 Opened Aug 2-1889
 Closed " 11-1889
 Reopened & Closed Oct 14-89
 J. H. Read D.L. - Cleanout -
 Reopened & Closed Sept 21-1903
 J. Peary D.L. - Cleanout -

Plotted.



Calinder Mc Austing Group

27 - Fulton St.

Thos Phillips Co. D. I.

Permit - 5401

Cent at curb 75"

Opened July 18 - 1889

Reopened Aug. 5 - 1924

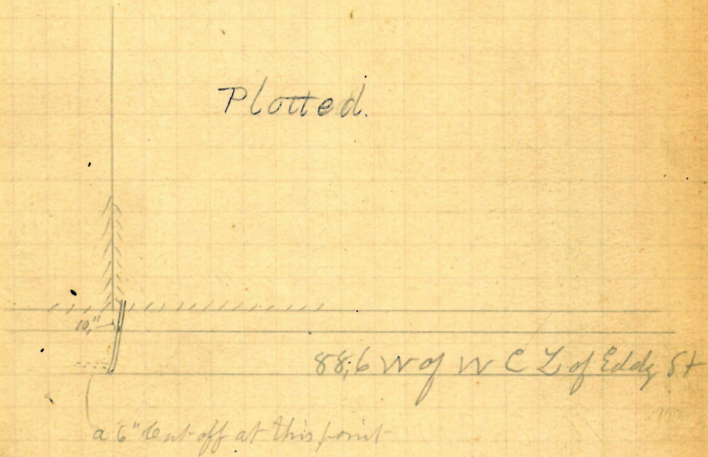
Closed 11.5 - 1924

H. H. Seaborn D. I.

See Iron Above -

8" from sewer

Plotted.

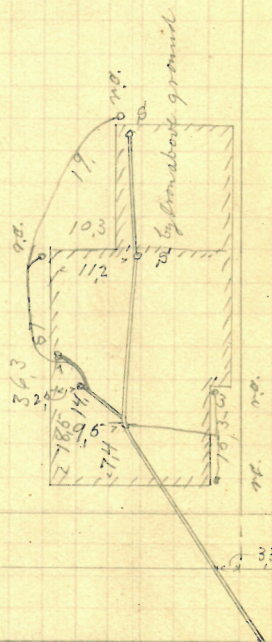


Fulton St

Charles H. Smith
 4 West Clifford St.
 Bernard Brady DZ
 Permit 5-4802
 V lent at curb 10.7
 Opened Aug 6-1889
 Closed " 7-1889
 Reopened Aug. 25-1908
 Closed " 31-1908
 W. D. Chadney D. L. -

Plotted

5" from curb



76.8 E of 37° W
 " Lockwood St.

West Clifford St

158
27

GONE

17^v

Elizabeth J. Walsh

30 1/2 Delhi St.

John Krogh D.L.

Permit 15-404

V. Rent at curb 10.5

Opened July 22-1889

Closed " 23-1889

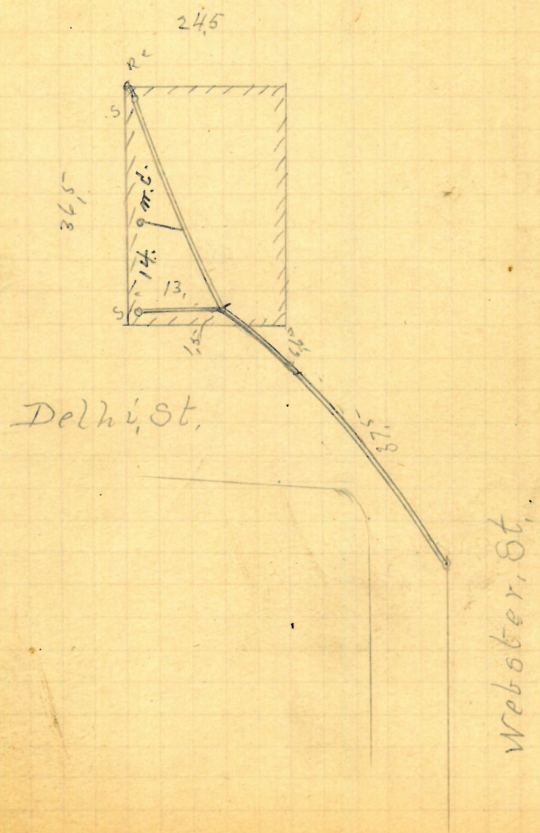
Reopened Aug. 10-1910

Closed " 10-1910

H. Matzner D. L.

5" from sewer

Plotted



Robert B Little

#19 - Central St.

Jason A Blackmar D.L.

Permit 5-403

✓ Cent at curb 10.3

Opened July 20-1889

Closed " 23-1889

Reopened & Closed Oct. 28-1899

N. W. Colgrove D. L. ~

Reopened & Closed June 18-1904

Geo. D. Lewis D. L. ~

Reopened May 23-1929

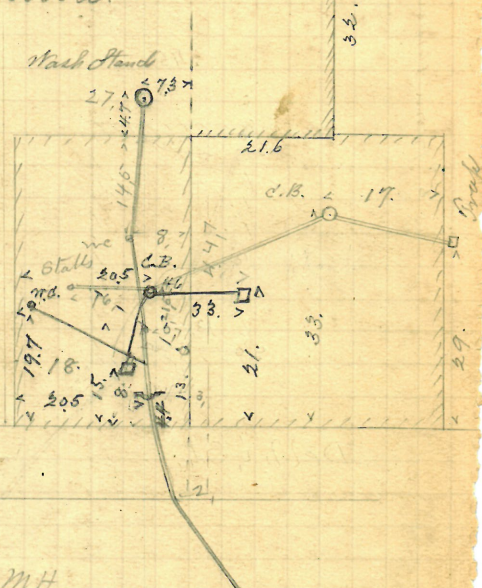
Closed " "

Reech St.

Plotted.

Reopened April 29-1909
Closed May 3-1909
G. A. Perry D. L. -

5" from sewer

55' W of 2 MH
" Pearl St.

Central St

Wm S Sweet

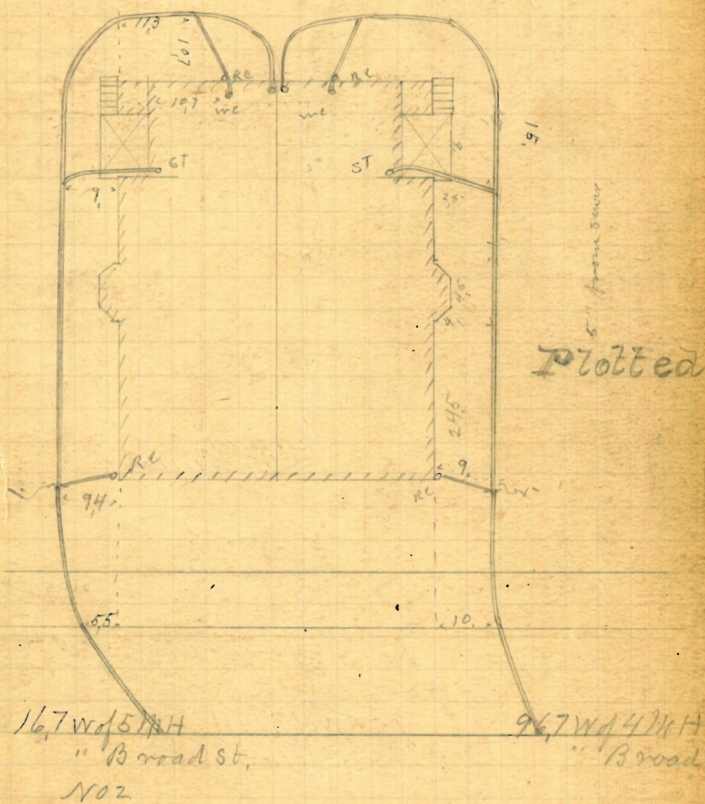
37-39 Parkis Avenue

J. Frank Read D.L. No 2

Permit 5-406-6-406

Cut at curb 10.5" - 10.4"

Opened July 26-1889 } Reopened-1-10-39
 Closed Aug 13-1889 } Closed-1-11-39
 P.W. Toft - Ch. Root

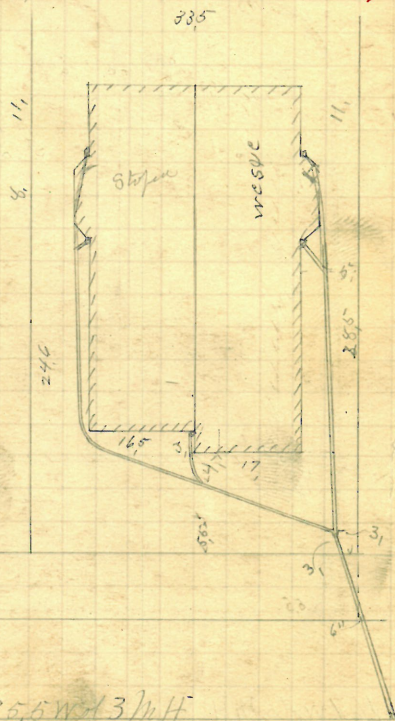


Parkis Ave

Harriet S. Arnold
 90-92 Manning St.
 J. Frank Read D.L.
 Permit 5407

Opened July 19-1889 Reop 6/12/61
 Closed " 22-1889 Closed 6/13/61
 Reopened Sept 16-1889 D.L.J.T.O'Connor
 Clear Open St.

Plotted

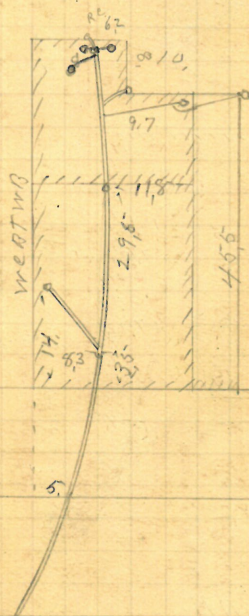


Manning St

Daniel E Day
 430 Broad St
 Bernard Brady D.L.
 Permit 5408
 V Cut at curb 10.5'
 Opened July 26-1889
 Closed " 31-1889

Reopened Oct 1. 1928
 Closed " 1. 1928
 W.A. Carlisle D.L.

6" from curb



Platted

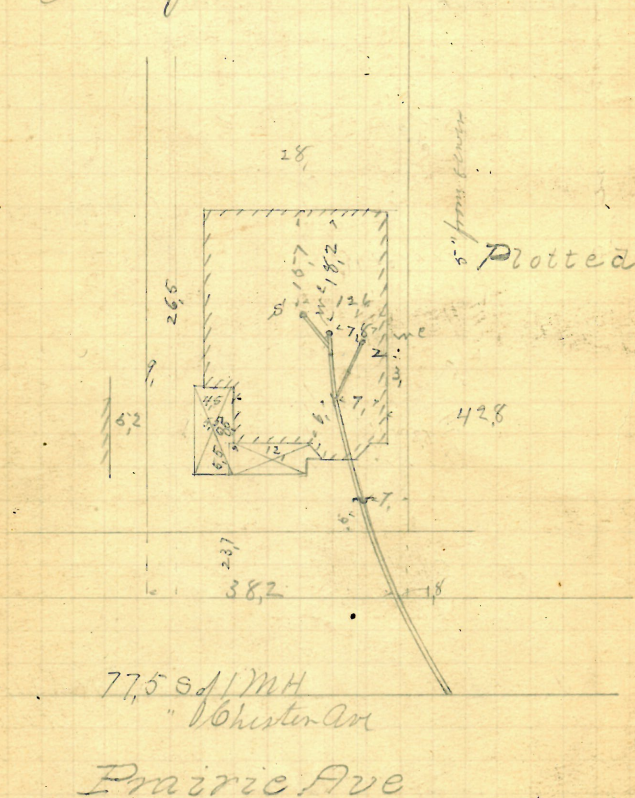
73.6 x 104 / MH
 " Foster St

Broad St

#281

Oscar N. Bender
 1155 Prairie Avenue
 Bernard Brady D.L.
 Permit 5-409

✓ Rent at Cent 9.5
 Opened Aug 8-1889
 Closed " 9-1889
 Reopened & Closed May 1-1900
 J. Deary D.L. - Cleaford



REMOVED

23

Archibald B Rice
62 Cranston St.
Jason A Blackmar D Z
Permit 6418
V Cut at curb 9.5'

Opened July 24-1889

Closed Aug 26-1889

Reopened Aug. 9-1911 Reopened Sept. 15-1926

Closed " 10-1911 Closed " 15-1926

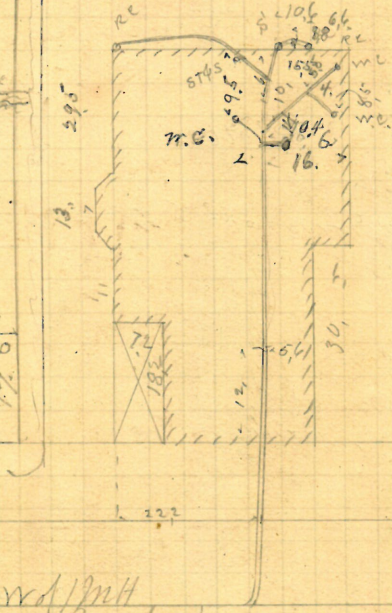
W. E. Rice D. L. ~ G. E. Reed D. L. =

-Wall- 4" 1.0
1.5

Plotted

54. Home
Aug. 16-1926

-Wall- 4" 4"
6.8
6.1
1.2



Reopened Aug. 24-1926
Closed Sept. 26-1926
G. E. Reed D. L. =

106 yd 12m H
" Pearl St

Cranston St

Swan Point Cemetery
 22 Comstock Ave.
 Hiram, 3 Road D.L.
 Permit 6411

✓ Tent at curb 10.
 Opened July 30 - 1889
 Closed Aug 3 - 1889
 7/3 Reopened - Sept. 13, 1935
 Closed - Sept. 13, 1935
 C. Lee - Adm. & Stock

Plotted.



20. W 43 N H.

" Prairie Ave

Comstock Ave

P 162-4

25

358-360 - Washington St.
Marshall Woodley Wife
Jason A Blackmer D.Z.
Permit 5-413
N.S.D.

ce Book
592-34

Opened July 31-1893
Closed " 31-1893
V Out at Cont 10,7

Reopened Oct. 14, 1895
Closed Oct. 16, 1895
L. Carey D. L.

Reopened July 23-1903
Closed " 24-1903
J. Deary D. L.

Reopened Sept. 23-1909
Closed " 24-1909
J. Deary D. L. Cleanout

Reopened Sept. 23-1909
Closed " 24-1909
J. Deary D. L. Cleanout

Reopened Jan. 7-1921
Closed " 28-1921
J. Deary D. L. Cleanout

Reopened May 9-1923
Closed " 11-1923
J. Deary D. L. Cleanout

Reopened May 9-1923
Closed " 11-1923
J. Deary D. L. Cleanout

Reopened May 9-1923
Closed " 11-1923
J. Deary D. L. Cleanout

Reopened May 9-1923
Closed " 11-1923
J. Deary D. L. Cleanout

Reopened May 9-1923
Closed " 11-1923
J. Deary D. L. Cleanout

Reopened May 9-1923
Closed " 11-1923
J. Deary D. L. Cleanout

Reopened May 9-1923
Closed " 11-1923
J. Deary D. L. Cleanout

Reopened May 9-1923
Closed " 11-1923
J. Deary D. L. Cleanout

Reopened May 9-1923
Closed " 11-1923
J. Deary D. L. Cleanout

Reopened May 9-1923
Closed " 11-1923
J. Deary D. L. Cleanout

Reopened May 9-1923
Closed " 11-1923
J. Deary D. L. Cleanout

Reopened May 9-1923
Closed " 11-1923
J. Deary D. L. Cleanout

Reopened May 9-1923
Closed " 11-1923
J. Deary D. L. Cleanout

Reopened May 9-1923
Closed " 11-1923
J. Deary D. L. Cleanout

Reopened May 9-1923
Closed " 11-1923
J. Deary D. L. Cleanout

Reopened May 9-1923
Closed " 11-1923
J. Deary D. L. Cleanout

Reopened May 9-1923
Closed " 11-1923
J. Deary D. L. Cleanout

Reopened May 9-1923
Closed " 11-1923
J. Deary D. L. Cleanout

Reopened May 9-1923
Closed " 11-1923
J. Deary D. L. Cleanout

Reopened May 9-1923
Closed " 11-1923
J. Deary D. L. Cleanout

35, W 14 M H

" Dean St.

Washington St

841
34
6



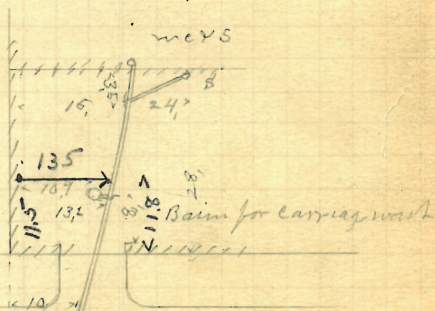
$\frac{168}{13}$

Permit 6,412

Opened July 29 - 1889
Closed Aug 6 - 1889

Rec Oct 24 1946 10/24/46
Clo Oct 24 1946 10/24/46
add for Bath & E. Largent 10/24/46

4th from 8 leaves



46,4 W of 3 M H
" Brown St.

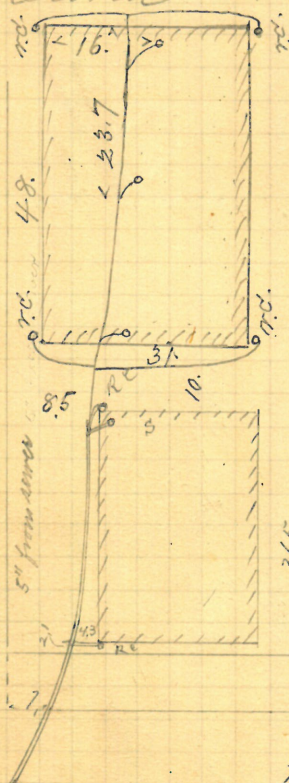
Olive St.

Charles H Porter $\frac{161}{19}$
 16 America St.

Frank Read D.I.
 Permit 6-414

Opened July 26-1889
 Closed " 30-1889

Cut at curb 10.5"



Reopened Dec. 24-1910-
 Closed " 24-1910-
 T. A. Perry L. L. -

Plotted

7. N. of M. H. at Europe St.

America St

233/235

Harriet A Boyden
 171-173 Pleasant St
 Daniel J Duggan D.L.
 Permit 5415-
 V cut at curb 7.3
 Opened July 29-1889
 Closed Sept. 8-1889
 Reopened June 19-1922-
 Closed " 20-1922
 J. D. Wright. Sr. L.

Plotted

Look out I.



Private drain

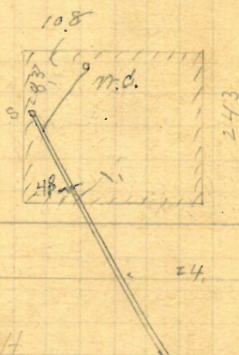
Pleasant St

Enters sewer at Ivy St. through
 private drain.

Chase Wiggins
 1256 Chalkstone Ave
 I Frank Read D.L.
 Permit 5416
 Sent at curb 10.
 Opened Aug 6-1889
 Closed " 7-1889
 Reopened Apr 21-1914
 Closed " 21-1914
 P.E. Messinger D.L.

6" from curb

Plotted



1256 W. M.H.
 at Ambrose St
 Chalkstone Ave

Leander M Ward

38-44 ~~15~~ Aborn St

John W Briggs D
Permit. 539

Permit

539

sent at ten

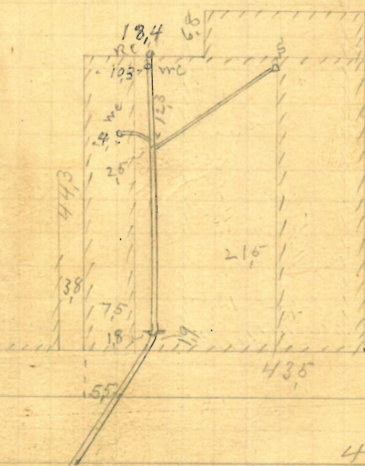
Opened Aug

Closed

7-1889

plotted

5" from 8 over



46, No 32 H.

" Westminster st

Aborn St

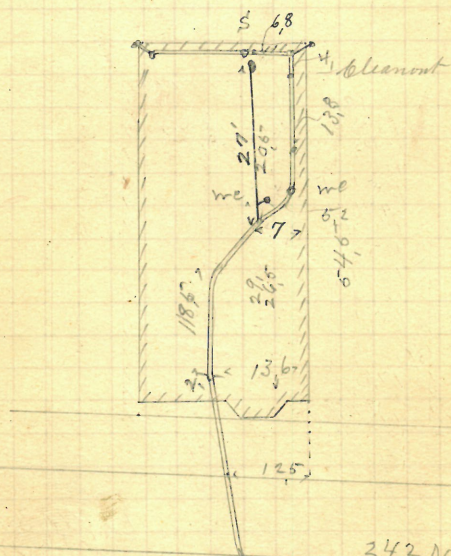
Annette Barker
 7 America St.
 D. Holmwood D.L.
 Permit 5418

Opened Aug 6-1889
 Closed " 14-1889
 Reopened Sept. 27-1904
 Closed " 29-1904
 S. Holmwood D.L. - Cleanout

Reopened May 6-1912
 Closed " 6-1912
 D. McChail D.L.

Plotted

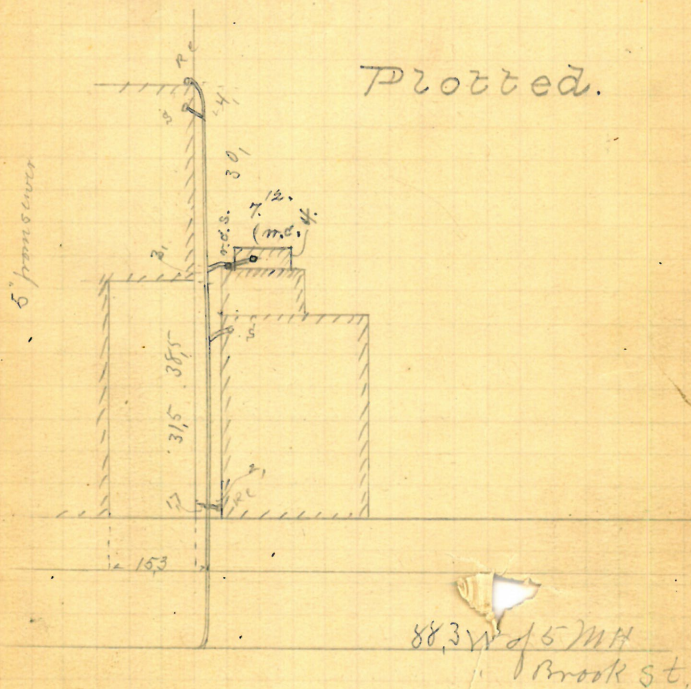
6" inside collar
 4" from inside



242 N of 4th H
 " Broadway

America St

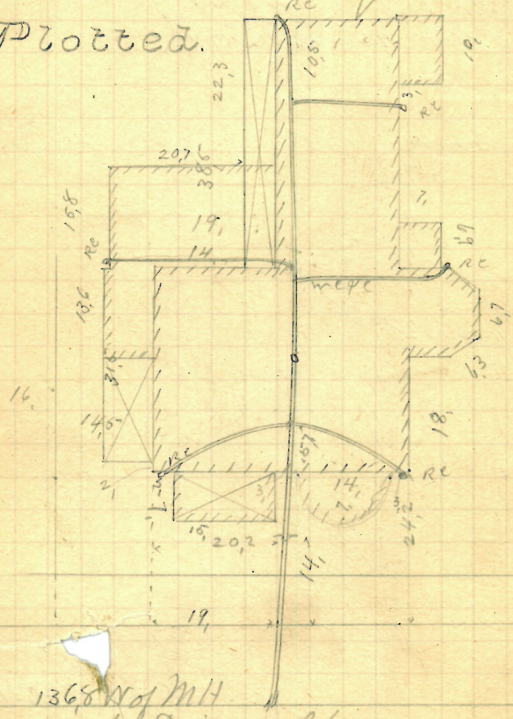
Estate of Julia S. Sherman
 14 Sheldon St.
 & Frank Read D.L.
 Permit 5-420
 Tent at least 10.3"
 Opened Aug 13-1889
 Closed " 17-1889
 Reopened & closed May 29-31-1900
 D. Holmes D.L.
 Reopened Sept 8-1920
 Closed 1920
 E. Gibbons D.L. - Clearmont



Sheldon St

Charles Fletcher
53 Stringson Ave
Frank Road D.L.
Permit 6-421
✓ Sent at curb 10,50
Opened Aug 6-1889
Closed " 9-1889
opened July 10, 1930
closed " 12 " 1930
J. W. Langley D.L.

Plotted.

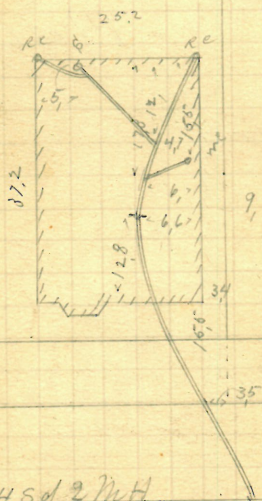


1368 W of M/H
at Dinan Place
Stemson Ave

36

Wm Mc Laughlan
 169 Prairie Ave
 Bernard Brady D Z
 Permit 5-423
 V Cont at least 95
 Opened Aug 12-1889
 Closed " 13-1889

Plotted Plotted



744 S of 2nd St
 Chester Ave

Prairie Ave Plotted

Stanton
18-20 - Hammond Cor Gilbert
Frank Read D Z
Permit 6-424

Opened Aug 5-1889
Closed Sept 7-1889
Reopened Sept 11-1889

Reopened June 23-1911

Closed " 24-1911

Reopened " 24-1911

Closed " 14-1923

Closed " 18-1923

Reopened " 18-1923

Closed " 18-1923

Reopened July 30, 1935

Closed July 30, 1935

Reopened 1-24-02

Closed 1-24-02

Reopened 1-24-02

Closed 1-24-02

Reopened 1-24-02

Closed 1-24-02

Reopened 1-24-02

Closed 1-24-02

Reopened 1-24-02

Closed 1-24-02

Reopened 1-24-02

Closed 1-24-02

Reopened 1-24-02

Closed 1-24-02

Reopened 1-24-02

Closed 1-24-02

Reopened 1-24-02

Closed 1-24-02

Reopened 1-24-02

Closed 1-24-02

Reopened 1-24-02

Closed 1-24-02

Reopened 1-24-02

Closed 1-24-02

Reopened 1-24-02

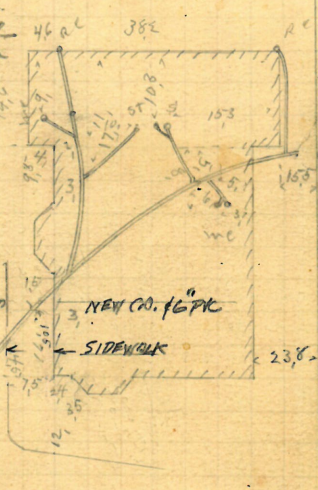
Closed 1-24-02

Reopened 1-24-02

Closed 1-24-02

Reopened 1-24-02

Closed 1-24-02



GONE
neg 5
SEE
BA 1625-70
PLAN 168-74
24, 22

Reopened Jan. 24 2002
Closed Jan 24 2002
Instant plumbing
Permit # 48665
Repair Lateral
Plotted

38

GONE

Samuel J. Hall
104 Blackstone St.

106-110

John H. Houghton D.L.
Pinner 5-640

Opened Nov 18-1889
Closed " 22 1889

Reopened May
Closed June 14. 90
D. B. Barry D.L.

Plotted

Reopened Sept 14. 90
Closed Sept 15. 90
McNally Clear

Proposed April 3. 94
Closed April 3. 94
J. B. Lyons D.L.
Clear north



Blackstone St.

48.6 w of 2 Mt
Eddy St.

PLAN 16
7

Not Removed

39

193-143

John O. Peterson
Camp Howell St.

P-158
29

John Knight D.L.
Permit 5426

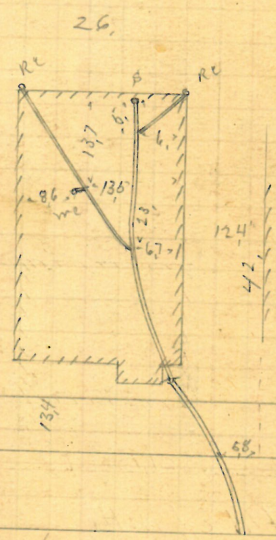
cut at curb 8.8

Opened Aug. 13-1889

Closed " 15-1889

Plotted.

6" from sewer



197 E of 4th St.
Camp St.

Howell St

40

P- $\frac{162}{24}$

Daniel J. [unclear]
 30 N Davis St
 John Kiogh D.L.
 Permit 5427
 V Cut at Curb 10.
 Opened Aug 21-1889
 Closed " 22-1889

OPENED 8/23/74

CLOSED 8/23/74

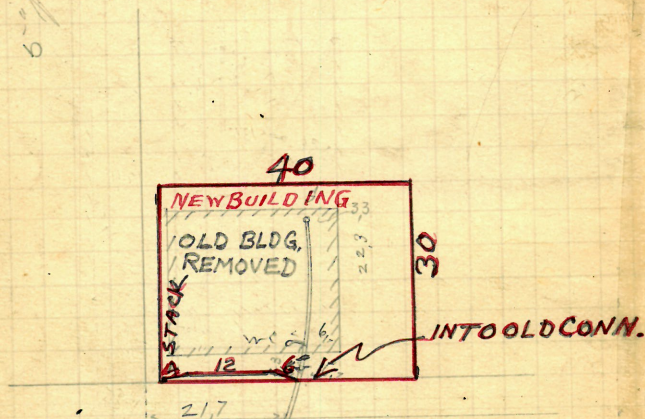
D.L. R.J. EUSEGNAN

NEW BUILDING

INTO OLD CONN.

Platted

6" from curb



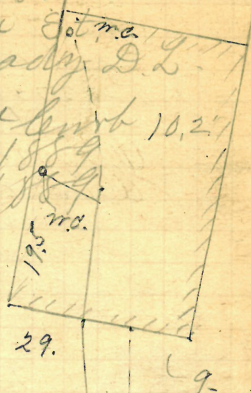
149.9 E of Int'l
 at Angle

30 N. Davis St.

42

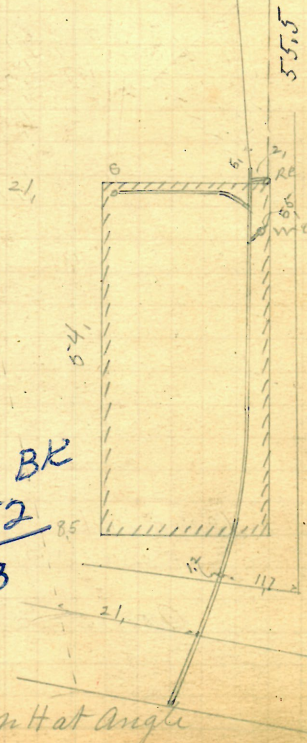
→ also rear of 853, Westmonte 855

Wm B Thompson
 404 368 Washington St. m.c.
 Leonard Brady D.L.
 Permit 5-429
 V Rent at curb 10.2
 Opened Aug 15-1889
 Closed " 19-1889
 Reopened Aug 7-1907
 Closed " 9-1907
 J. Deary D. L.



Propped.

6" from street



see BK
 3452
 103

Washington St

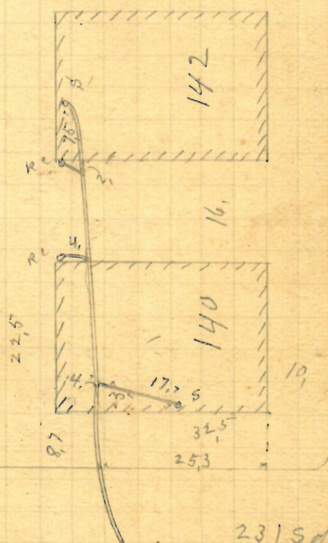
7.3 W of M H at angle

140-142 Chalkstone Ave

43

Open Campbell
N Davis Cor Chalkstone Ave
B Brady D.L.
Permit 57430
Cut at curb 9.5'
Opened Aug 20-1889
Closed " 27-1889

Platting



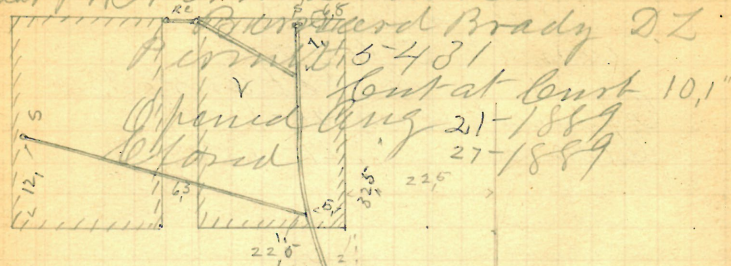
23154 V.M.H.

" Chalkstone Ave

N. Davis St

Chalkstone Avenue

Owen Campbell
Rear 9-11 North Davis St.
Barnard Brady D.L.
6-4-31
Leant at Leant 10,1"
Opened Aug 21-1889
Closed 27-1889



Gone

69, 8 of 1 Mt
" Chalkstone Ave
N Davis St

46

GONE

IP 162
27Prov County Savings Ban
9-11 North Davis St.Wm J Hogg D. L.
Permit 5-433

V Cut at least 10,

Opened Aug 19-1889
Closed " 22-1889

Reopened June 20. 93

Closed June 26. 93

Opened Aug 2-1904

Closed " 3-1904

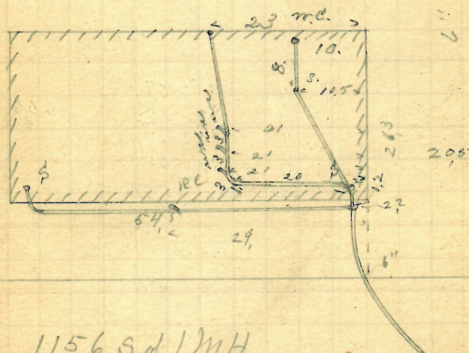
A. W. Colgrove D. L. ~

Wm J. Hogg D. L.

Reopened July 17, 1931

Wm J. Hogg D. L.

Plotted



115.6 S of MH

" Chalkstone Ave

N. Davis St

Removed

41

Henry R Rogers
46 Olney St.
Frank Read D.L.
Permit 6434

✓ Out at curb 10.2

Opened Aug 27-1889
Closed Sep 10-1889

Reopened Sept. 28-1912

Reopened Nov. 23, 1932

Closed Oct. 25-1912

Closed 24

A. Chiello D.L.

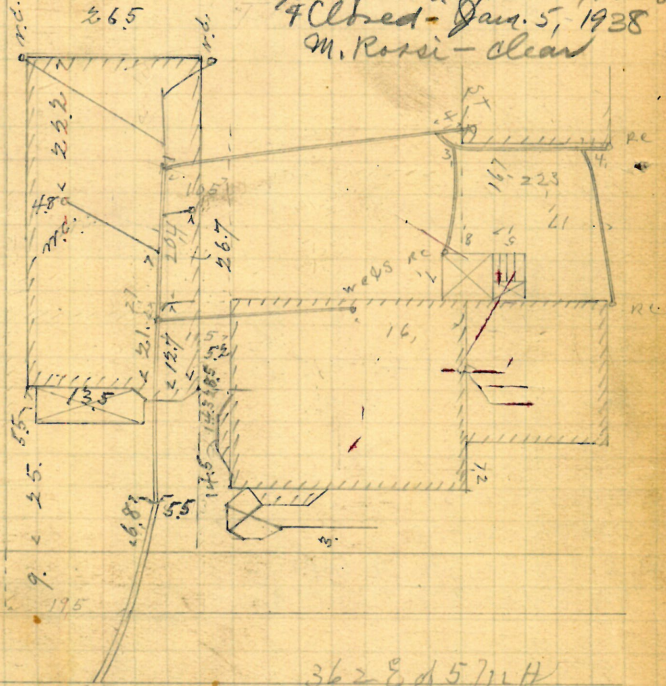
7th Floor H. Clean

Reopened Jan. 5, 1938

4 Closed Jan. 5, 1938

M. Rossi - clear

Closed - Nov 16, 1934
M. Rossi - clear
Closed - Dec 4, 1934
M. Rossi - clear



36.2 E of 57th St.
N. Main St.

Olney St

Wm H Gale

151 Pine St.

J Frank Read & L

Permit 5436

✓ Bent at curb 6.4"

Opened Aug 20-1889

Closed " 20-1889

Extended by Smith the Plumber
Aug 21-1889

Reopened July 8-1913

Closed " 8-1913

Wm. Chadsey & L. Element

Closed Aug. 30-1921-

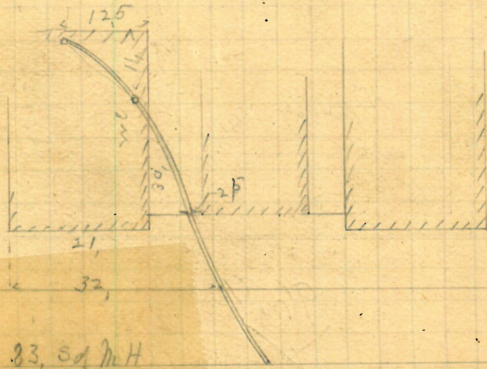
Closed " 31-1921-

C. L. Haged & L. - Change from

Iron to Clay -

5" from curb

-Plotted-



Page St.

33, S. of M. H.

at Page St.

Pine St

50

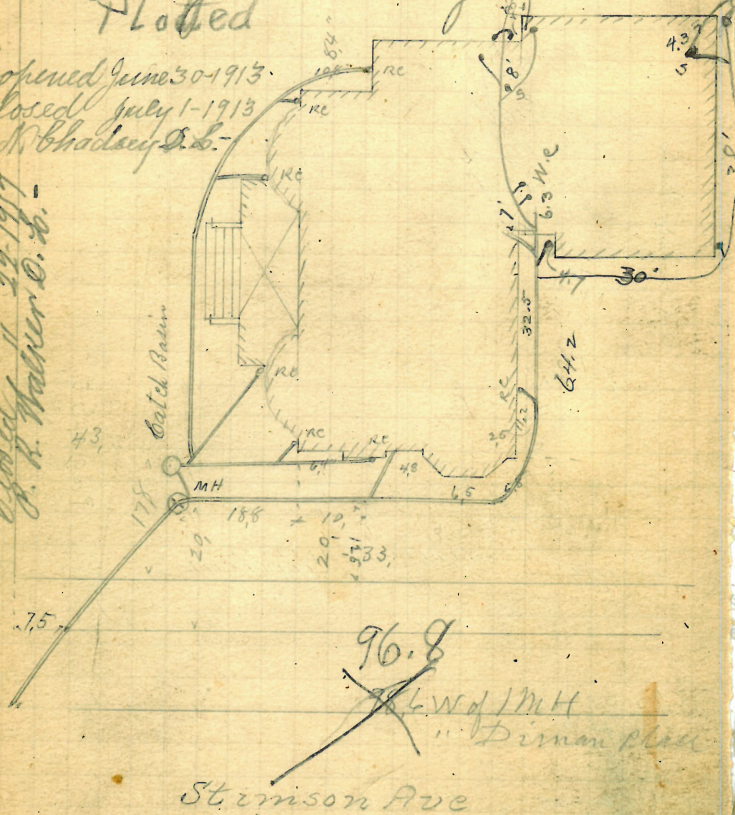
Charles Fletcher
47 Stinson Ave
Anthony R Barney D.L.
Permit 5487

Opened Aug 20-1889
Closed Nov 2-1889

Reopened Aug 2-1913
Closed " 5-1913
W.N. Chadsey D.L.
Plotted

Reopened June 30-1913
Closed July 1-1913
W.N. Chadsey D.L.

Reopened Mch 20-1917
Closed " 24-1917
E. H. Walker D.L.



REMOVED

51

City of Providence School
137 Bridgman St.

Frank Read D.L.
Permit 3438

cut at curb 10.5

Opened Aug 21-1889

Closed " 27-1889

1/2 Repaired 6/24/43

1/2 Closed 6/28/43

R. Potts ch. of pavers

Repaired July 31/96 - 6" to force
Closed Aug 11/96 - H.R. Chidsey & D.
Repaired & closed Aug 4-1904 - J.W. Anderson & S.B.

Repaired Dec 17/1906
Closed " 24-1906

Repaired July 28-1910 -
Closed Aug 6-1910 -
D. Holmes & S.B.



36
5' from sewer
6" to force Aug 11/96

Repaired Jan 30-1923
Closed " 31-1923
F.D. Mearns & S.B.

4th M.H.
3rd Division St.
Bridgman St

Margaret Furlong
 46 Benevolent St.
 John W Furlong D.L.
 Permit 5439
 V
 Opened Sept 9, 1889
 Closed Nov 20, 1889

Connects with drain
 previously laid



Plotted

Benevolent St

P-157
6

53

City of Prov School House

13-Pallas St

Jason A Blackmar D.L.

Permit 5440

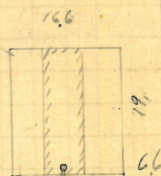
V. Cut at curb 10.2

Opened Aug 21-1889

Closed " 24-1889

Traped Vault.

Plattner



86.7 N of M/H

Carpenter St

270-272 KNIGHT 55

Elyna A Perkins

87-89 Knight St.
Bernard Brady DL

Permit 5442

✓ mil 5442
cut at base 9.6

Opened Aug 28-1889

Closed " 30-1889

CUT @ CURB 8'
PERMIT # 49307

D. L. A. RICCI

INS. J.A.M.
(REPAIR)

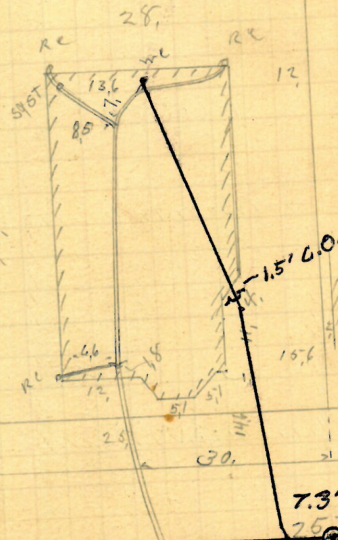
Plotted.

March 2005

8" from center

I omitted to get the crossing of Emb.
it can be ascertained on ground
I got it Feb. 6 - 1890
43

Jan 1 1866



Enters sewer 7.3' N. of 2nd. M.H.
N. of Carpenter St.

N. of Carpenter St.

Knight St

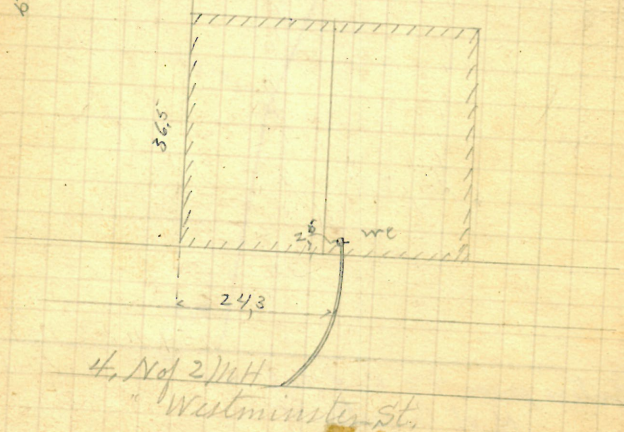
of 2 MB
Carpenter St

Estate Rufus Greene
 50 Mathewson St.
 Wm Hogg D.L.
 Permit 544388

Opened at Court 74
 Aug 23-1889
 & closed " 23-1889

6" from curb

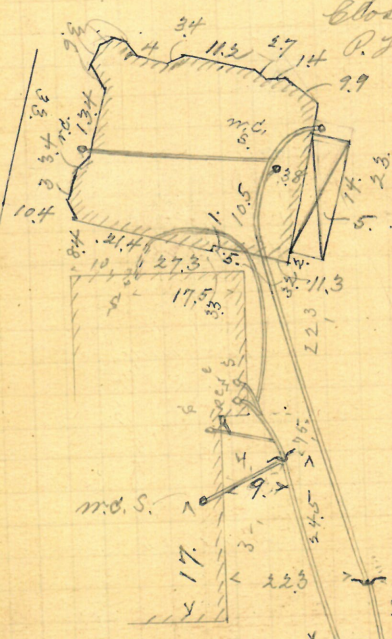
Plotted.



Wm H Hopkins Administrator
10-5 Cor Elm & Plain Sts
J Frank Reed D.L.
Permit 5444
✓ Cut at curb 9.
Opened Aug 23-1889
Closed " 28-1889
Reopened closed Oct 2-1889

Reopened July 18-1904
Closed " 19-1904
P. H. Kehoe D. L.

Reopened Nov. 19-1901
Closed " 22-1901
J. Deary D. L.



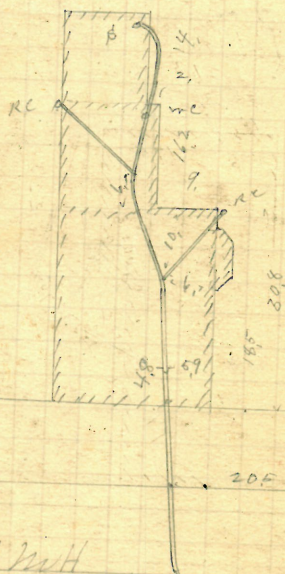
Plotted
Reopened Mar 11-1946
Closed Mar 21-1946
Clear C. Corwin D. L.

34.9 wd 2.14
11.4 5.6

ET

Timothy F. Dawyer
 22 East St.
 D. J. Mc Carthy D.L.
 Permit 5446-7
 Cut at level 10.9
 Opened Aug 23-1889
 Closed " 26-1889

Plotted.



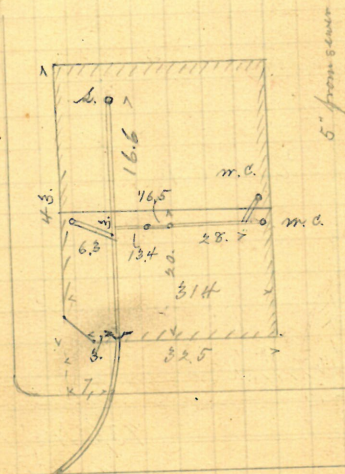
114.2 N.A.M.H.
 at Transit St.

East St.

The Union Co
 87 Orange St.
 D. Holmes & Co. D.L.
 Permit 5448
 V Cut at Curt 5,9
 Opened Aug 28-1889
 Closed " 28-1889
 Reopened June 14 " 98
 Closed " 17 " 98
 J. A. Blackmar D. L.
 Reopened & closed Sept 25-1907
 W. H. Dorsey D. L. - clearance

Friendship St.

Plotted.



86, N d / M H
 3. Friendship St.

Orange St

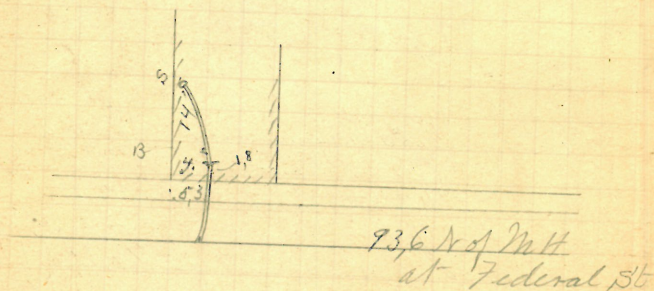
62

GONE

Frank Horr
 10 Barclay St
 D. Holmes & Co D.L.
 Permit 5449
 Cut at curb 10.2
 Opened Aug 31-1889
 Closed Sept 3-1889

5" from sewer

Plotted



Barclay St

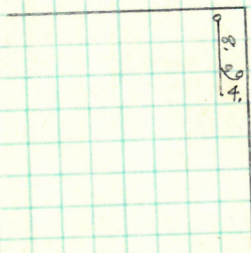
X 5450

Abner D. Morr
29 Federal St.

opened 11/11/57
Closed 11/11/57
Size 4" Iron

R.E. Kirkwood D.L.

GONE



29 Federal St.

Add Toilet

698
63

Abner D. Loomis
Barclay N.W. Cor. Federal St.
J. D. Holmes & Co. D.L.

Permit 5-46-0

Cost at curb 10.5

Opened Aug 29-1889

Closed " 30-1889

Reopened - Feb 26. 1935

Closed - Feb 26. 1935

F. Schiold - clear

Federal St.

Connects with work previously done
5" from sewer

Plotted.



288 N. M. H.
at Federal St.

Barclay St

REMOVED

46 3 Mary E. Spencer

46 ~~36~~ Stewart St

Jason A Blackmar D.L.
Permit 5451

Permit 5451

cut at curb 99

opened Aug 28-1889

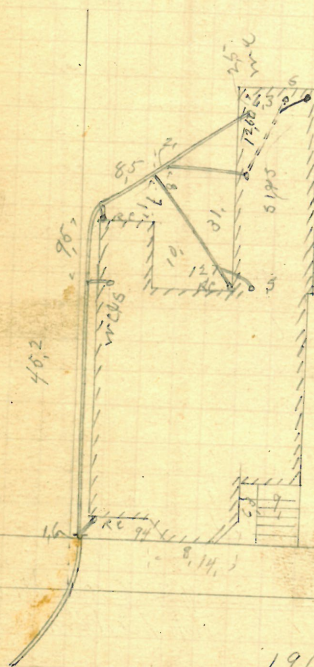
Cloud Sept 4-1889

Rep June 2 1948 6/1/48

Clo June 2 1948

add for bath a Rebrish P L.

Platted



1968. 1 M H

" Pond St,

Stewart St

George C Arnold
 104 Washington St
 Jason A Blackmar D.L.
 Permit 10

Opened to Extend ^{Cut at curb} Sept 8-1889
 Closed " 8-1889

Required to clear manhole 5/12 by J. Adams & Co

Relaid Sept. 3. 1896 after street
 was widened and crosses new
 curb line 39.8 West of D. P.
 East at Mathewson Street
 (cut 7.4' + 2. F -

- 6" Pipe -

from D.P. 39.8

27.3 from West Bdg
 Line of Mathewson St.

Abner Y Poole
 # 295-297 - George St.
 Bernard Brady DL
 Permit 5-4 5-4
 Cut at curb 5.3"
 Opened Aug 31 - 1889
 Closed Sept 5 - 1889
 Reopened 1-6 - 1889 by D.E. Ba
 Closed 20 - 1889

Reopened May 3, 1932

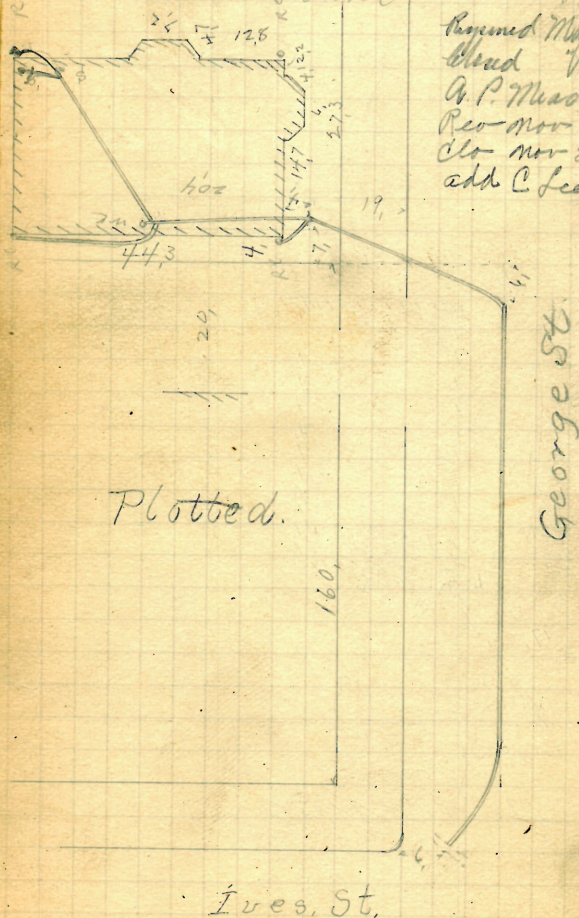
closed

A.P. Maschm Dr. Chan

Re-opened 29 1948

clo. Nov 29 1948 1/24/4

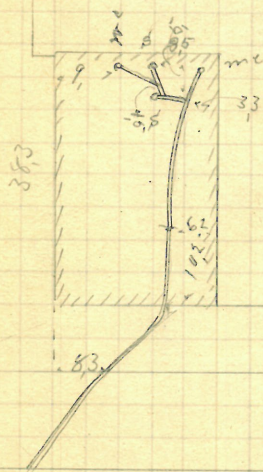
add C. Lee D.L. 1/24/4



#100

Thomas J. Hill
 60 Lockwood St.
 Frank Read D. L.
 Pismir 5-45-6
 ✓ bent at bent 9.7
 Opened Sept 2-1889
 closed " 3-1889

Plotted.



47.5 W of M.H.
 " Mary St

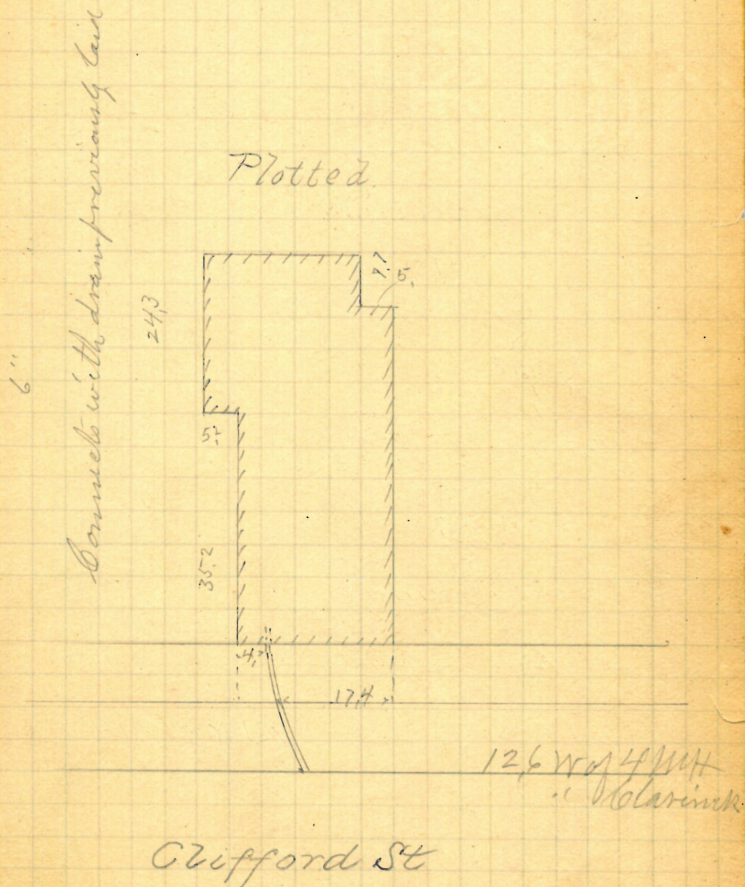
Lockwood St

Removed

71

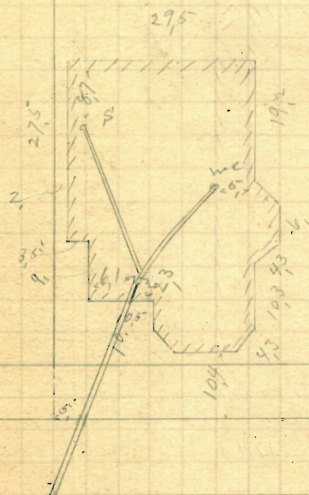
August 7 Borchardt.
201 Clifford St.
J Frank Read D.Z.
Permit 545-7

Opened Sept 4-1889
Closed " 5-1889



A. Choate G. F. Rebecca W. Barstow
 46 - Dartmouth Ave
 J Frank Read DZ
 Permit 545-8
 V Cent at curb 104"
 Opened Sept 13-1889
 Closed " 14-1889

Plotted



93/1 W of 6 MH
 " Broad St.

Dartmouth Ave

Martha E Gardiner

12 Barclay St.

D Holmes & Co DL

Permit 5-460

V

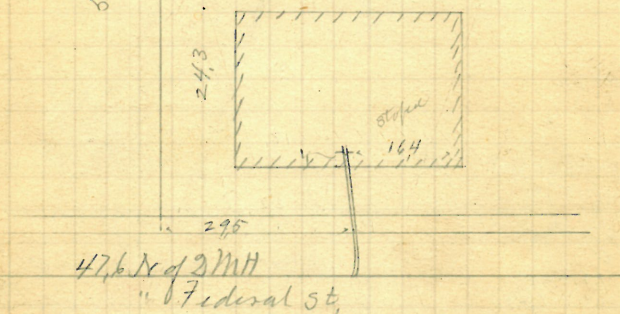
Contact Cont 99

Opened Sept-3-1889

Closed " 5-1889

6" from corner

Plotted

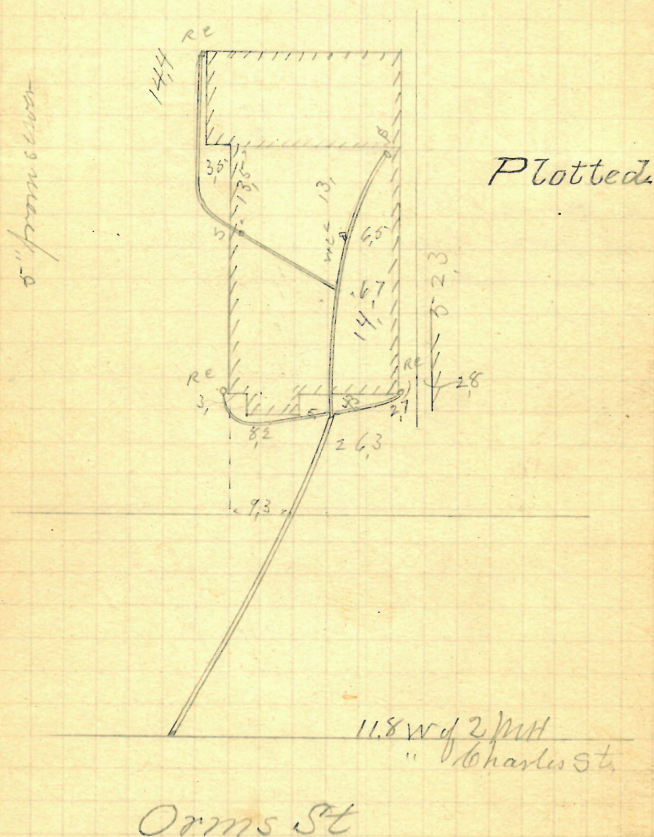


Barclay St.

76

GONE

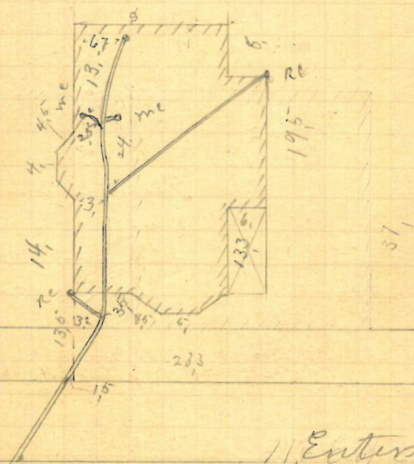
Henry Z Backwith
 14 Orms St.
 John Kiagh DZ
 Permit 5462
 V Cont at Sept 10,
 Opened Sept-6-1889
 closed " 7-1889



Charles E Blake
 10-Brighton St
 J. J. Blackman & Z
 Permit 5468
 V Cent at curb 105
 Opened Sept 9 - 1889
 Closed " 12 - 1889

Prozeca

5" from sewer



11 Enter 2 m H
 W of Vinton St

Brighton St

Engenia J Tucker

231 George St.

J Frank Read D.L.

Permit 5464

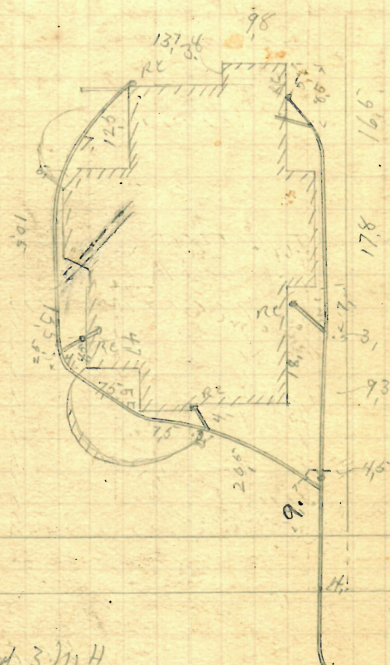
V

Out at curb 107

Opened Sept 9 - 1889

Closed " 17 - 1889

Plotted.



56; E of 3 m H

" Hope St.

George St

James A. George
884 Broad

884. Broad

S. E. Cor., Wesleyan Ave

John K. D. L.

5466

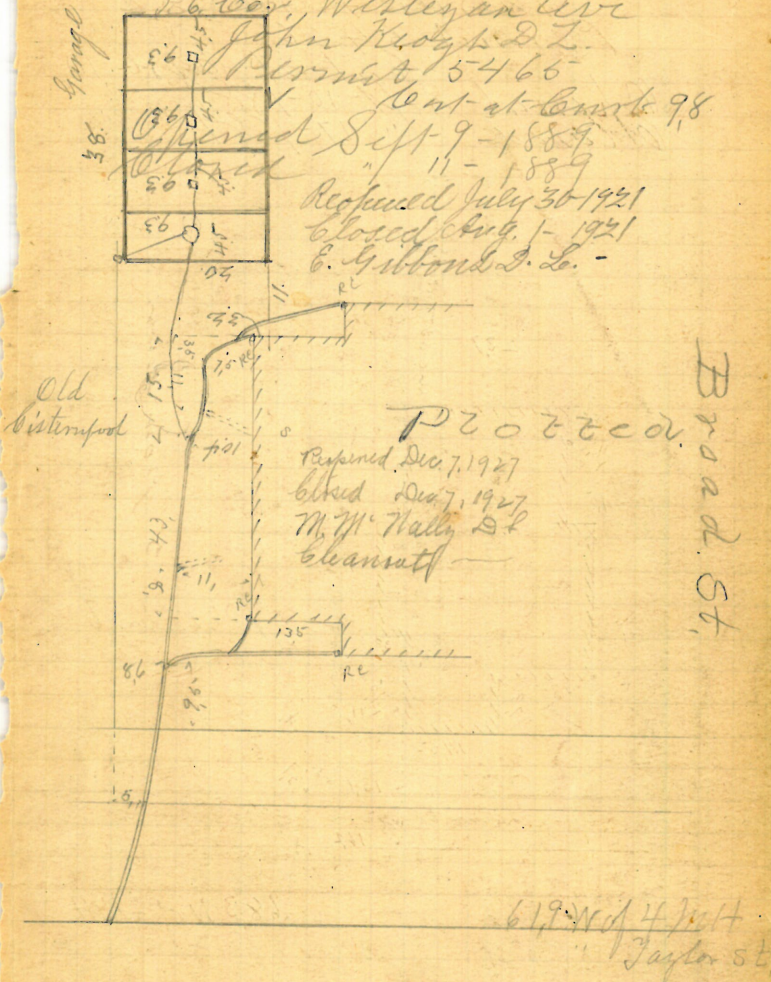
Cent at Court 98

opened Sept 9-1889

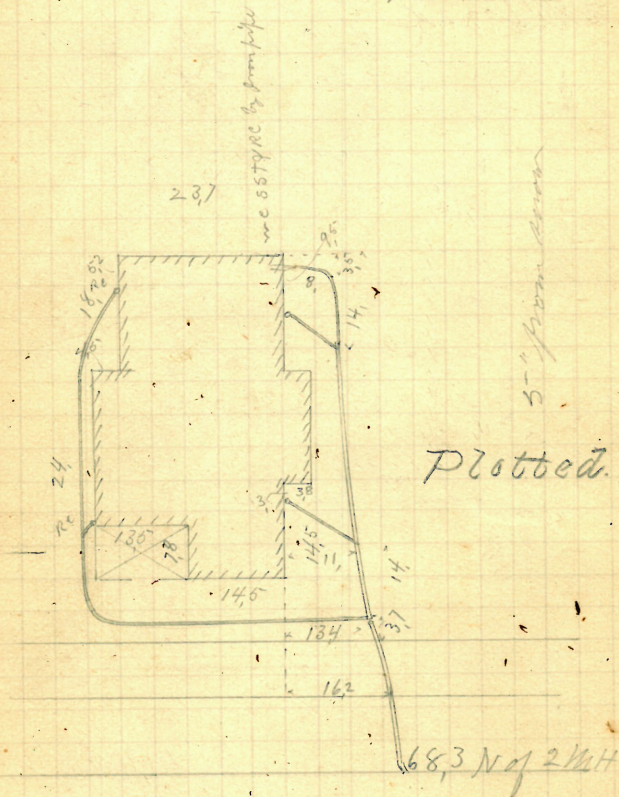
Received July 30 1921

Closed Aug. 1 - 1921

E. Gibbons Esq. Lc.



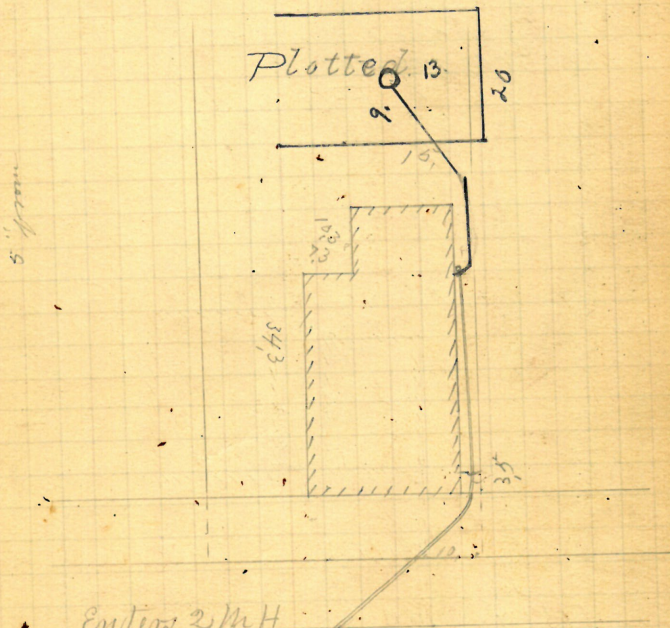
Wesleyan, Ave.



Francis St

Mary J Mc Michan
 42 Langley St.
 Bernard Brady D.Z.
 Permit 5467
 V Gut at curb 84"
 Opened Sept 7-1889
 Closed " 9-1889

20 Sept 14 1949 7/13/49
 on Sept 14 1949
 1 hour from Mc Kelday P.Z.



Entire 2 1/4 H
 w of Eddy St.

Langley St

Opposed Sept 7-1889
 Allowed Sept 9-1889
 Opposed Sept 11-1889

Reopened Sept. 10, 1892

Closed Sept 10, 1892

Reopened & Closed Sept. 23, '98

W. E. Sherman D. L.

Expended to Eleanor May 15-1909

Wm E. M. Kennedy D. Sc.

J. L.

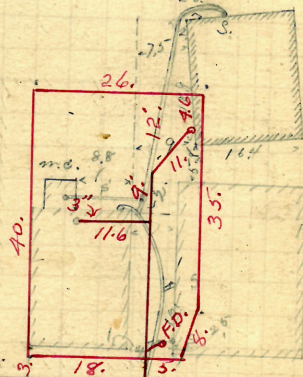
Reopened 8/20/5

Closed 8/20/59

D.L.P. Mangione, Jr.

D. Licker Outside

Plotted.



739 W. 137th St. H

Eddy St

Globe St.

Langley St

Callender McAnslin & Group
Union St. E. for Belton
Thomas Phillips & Co. D.L.
Permit 5470

Opened Sept 7-1889
Closed " 12-1889
Levt at levt 6.8"

Old N.B. of N. Connection
may be abandoned

Reopened Aug 25 94
Closed Sept 30 94
D. Phillips & Co. S. F.

Plotted.

Fulton St.

n.e. added to blank
once left in sidewalk
Sept 8-94
53.8
50, Sidewalk
excavated



Put in
405 N. of 2nd H.
437 " " " " " " " "
old one

Union St

113 James Campbell
76 Sheldon St.
Dennis Mc Carthy DZ
Permit 5471
✓ Sent at curb 10.5
Opened Sept 13-1889
Closed " 14-1889
Reopened July 29-1910
Closed " 29-1910
A. P. Meadus D. L. -

[illegible]

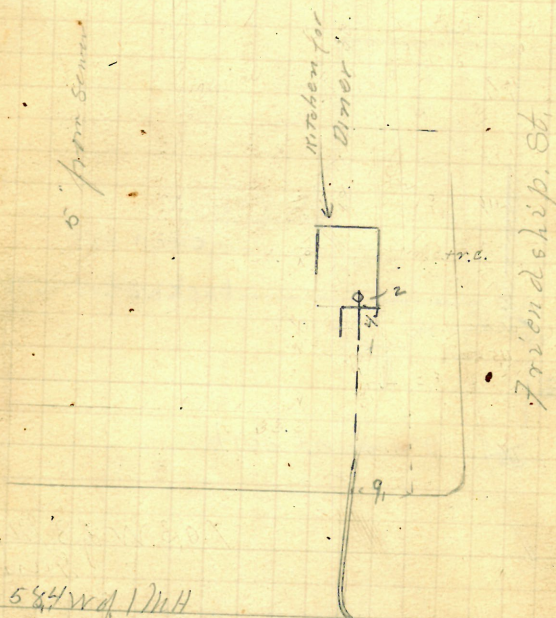
Sheldon St

The Union Co.
 111 Dorrance Cor Friendship
 John Knight Dr.
 Permit 6475
 V Tent at camp
 Opened Sept. 13-1889
 Closed 14-1889
 Reopened Dec. 10/28
 Closed 12/28
 Bernardino St.

Platte.

Reopened & closed May 4-5-1900
 J. W. Reed & Co. - Reopened -
 J. C. Blackmar & Co. 20/98

5' from corner



584 W of 1 M.H.

E. Friendship St.

Dorrance St

P. - $\frac{158}{33}$

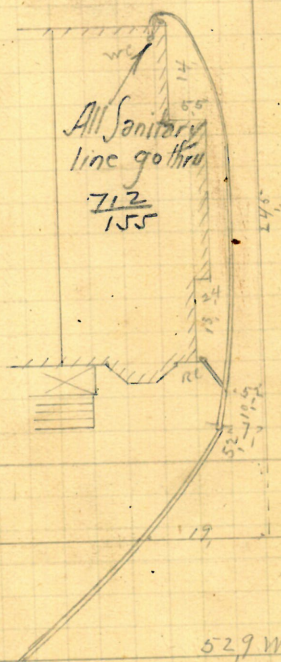
87

Patrick Lynch
34 Wesleyan Ave
John R. R. O. L.
Permit 5-474

Opened Sept 13-1888
Closed 14-1889
Cut at curb 99"

Reopened July 23, 1928
Closed July 21, 1933
Reopened July 21, 1933
Closed July 21, 1933
Reopened May (Iron)
P.C.

5.4.1933



Wesleyan Ave.

88

Esther P. Metcalf
 #13279 Bowen Cor. Prospect
 Elery Millard D.L.
 Permit 5475

Opened Sept 13 - 1889
 Closed " 25 - 1889
 Cent at Cent 8.5

Repaired - Nov. 18, 1943

Closed - Nov. 26, 1943

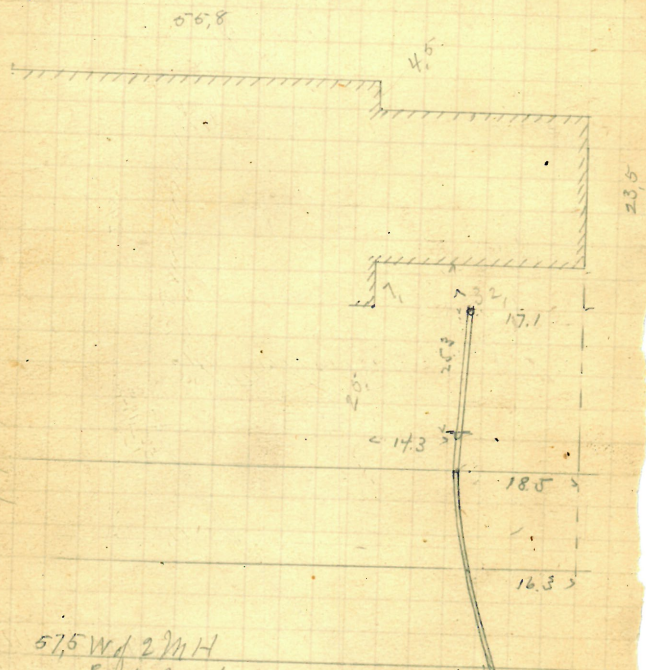
M. Rossi - clean roots

Relay 4" Iron

Plotted

Prospect St

5" pipe from sewer



57.5 W of 2nd H

E of Prospect St

Bowen St

Fergus J. Mc Osker

#85 Cross St.
John Keogh D.L.
Permit 5425-

V Out at curb 7.1

Opened Sept 20-1889

Closed " 21-1889

Reopened office 12-1909

Closed " 12-1909

W. L. Miller D. L.

Reopened Sept 1-1914

Closed " 1914

J. Messinger D. L.

Reopened

Reopened Nov 5-1921

Closed " 7-1921

Reopened J. D. L.

Reopened

Reopened Aug 19-1946

Closed " 20-1946

H. Berry D. L.

Aug 14 1946 8/14/46

Aug 14 1946 1/4/46

Rep. Walk. M. J. Klein D. L.

Reopened Feb 1914

Closed 1914

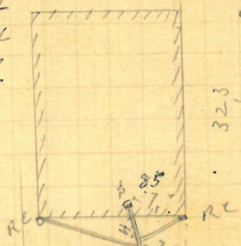
J. L. Messinger D. L. Reopened

Reopened Sept 23/31

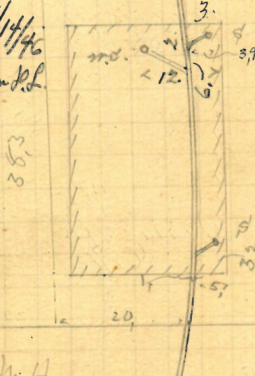
Closed " "

C. L. Munde D. L.

Reopened



Plotted.



197 W. 12th St.

McKenna St.

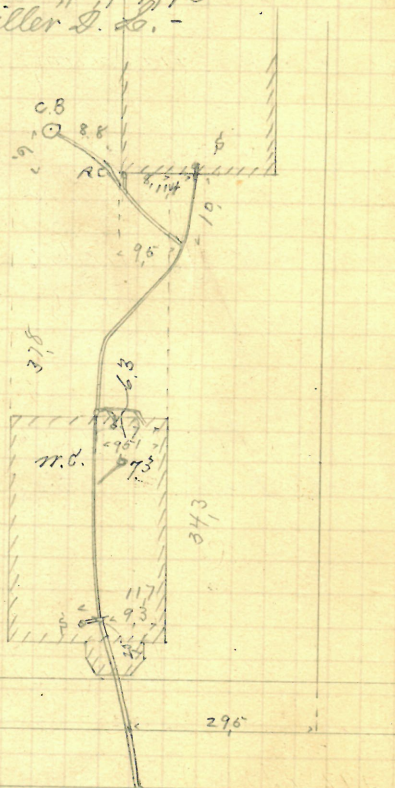
Cross St

Fergus J. Mc Osker
#88 Cross St.
John Keogh D.Y.
Permit 5-463

V. Tent at length 10,
Opened Sept 17-1889
Closed " 23-1889.
Reopened Sept. 7-1916
Closed " 7-1916
H. J. Miller S. B. -

5" from center

Plotted



175.9 Wd 1 m H

" McKenna St.

Cross St

Michael Leahy & Wife

75-77

Cross St.

John Keogh D.L.

Permit 5477

✓ Sent at Const-10,5

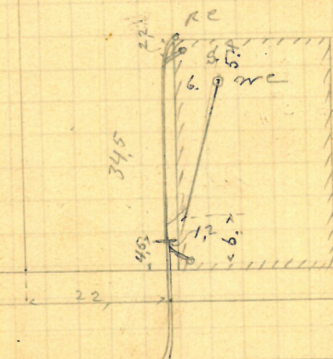
Opened Sept 21-1887

Advised " 21-1889

tended for Wc by W. Condy, in Mch, 1897.

6" from surface

Plotted



Cross St

72,3 W of 2 M.H.

" McKean

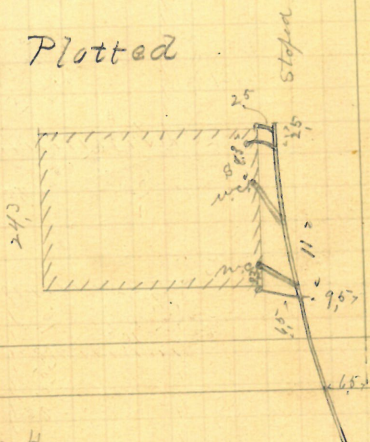
James Gray
823 Croft St
John Krogt D.L.
Permit 5479

V sent at limb 10.9

Opened Sept 17-1889
Closed " 20-1889

Proposed May 26, 93
Closed May 27, 93 J. F. Daniels D. L.

Plotted



4/1 road 2) m H
McKenra St,

Cross St

Thomas & John Mc Connell
 31-33 North Davis St.
 John Keogh D.L.
 Permit 5476

Opened Sept 16-1889
 but at cost 95
 17-1889

Reopened Feb 7 1945

Reopened March 20 1945

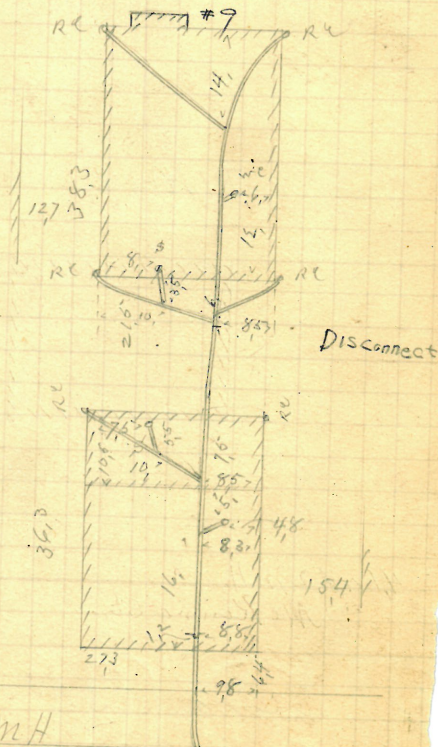
Closed Feb 7 1945

Close Apr 11 1945

Cleared line T. Gammon D.L. Clear Dist. from 25 Douglas St. Road

Douglas Arc 273

Plotted.



1138.2 of MH
 at angle

N. Davis St.

101 Eck A Gillson
447 Broad St.
Bernard Brady D.L.
Permit 5480

✓ Cent at curb 99
 Opened Sept 19-1889

Reopened - July 20, 1939

Closed -

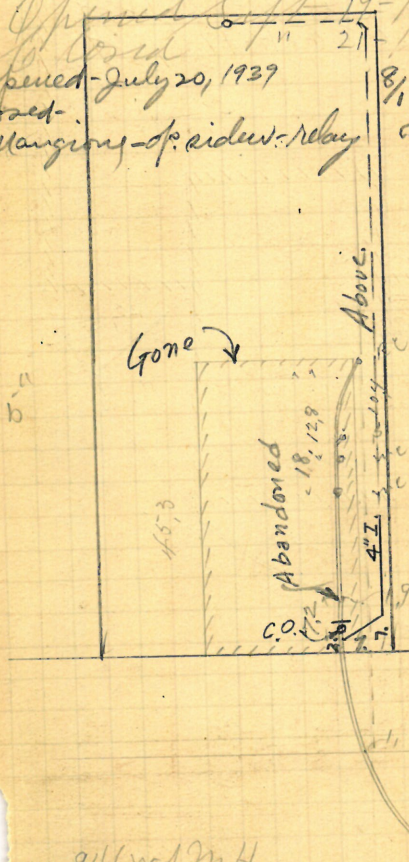
Mangione - sp. sidewalk - relay

Reopened - Aug 1, 1939

Closed - Aug 10, 1939

Di Mascella - new bldg

Plotted



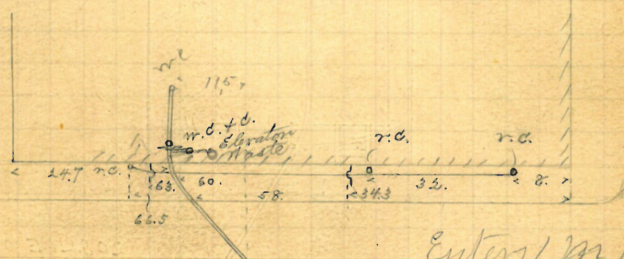
946 rd M H
 E of Byron St

Broad St

Henrietta M K Brownell.
28 - Pick for Pine St.
Jason A Blackmar D.L.
Permit 5482

V Tent at least 55
Opened Sept 29 - 1889
Closed " 20 - 1889
Reopened Oct 26 - 1895 Reopened Apl. 25 - 1896
Closed Nov 1 - 1895 Closed " 25 - 1896
E. E. Manney D. L. E. E. Manney D. L.
Reopened & Closed Jan 8 - 1898
D. Holmes & Co. D. L.
Reopened & Closed Jan 7 - 1898
J. B. Read D. L. - Put in trap
Reopened Mar. 4, 1930
Closed
F. Dupins D.L.

Plotted.



Enter 1 M H
N of Pine St.

Pick St

98.

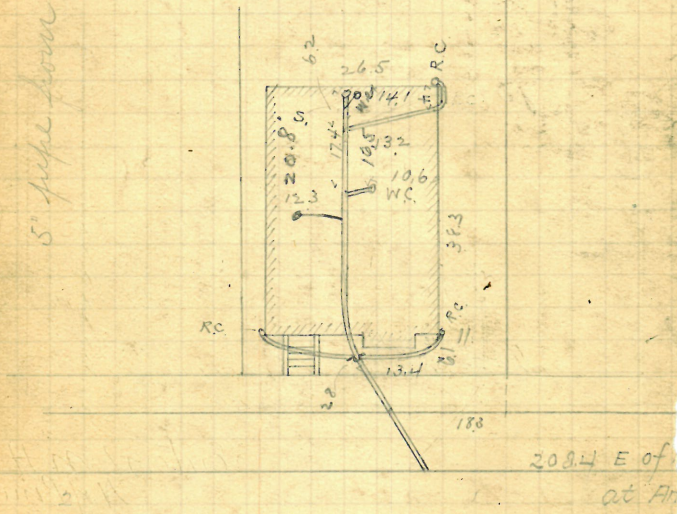
Mathew Goodwin
19 Royal St.
John Keogh D.L.
Permit 5483

Opened Sept 23, 1889
Closed " 30 1889
Cut at curb 9.5

Reopened Aug. 13-1912
Closed " 15-1912
C. Goodwin D.L.

5" pipe down house

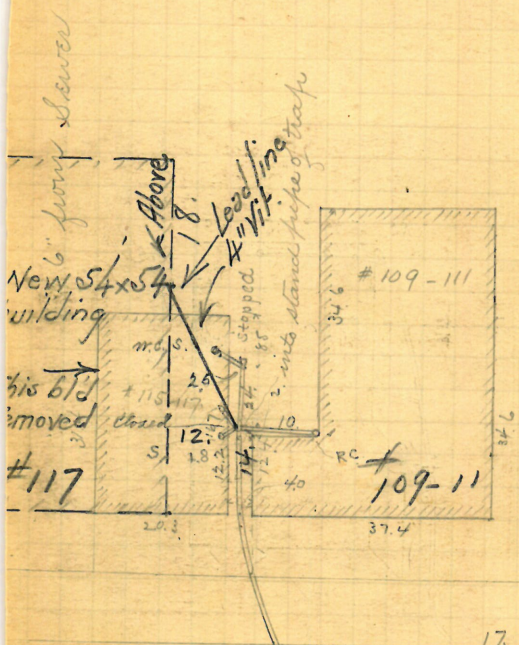
Plotted.



Royal St

Charles W Brown
115 Friendship St.
J Frank Read & L.
Permit 5484

Opened ^{Sept} 24, 1889 ^{but at curb 6.8} Prop - Apr. 15, 1933
Closed 25 " " Closed " 27, 1933
Reopened Apr 11-1906 W. J. Moran
Closed " 12-1906 Add
P. Hubley D. L.

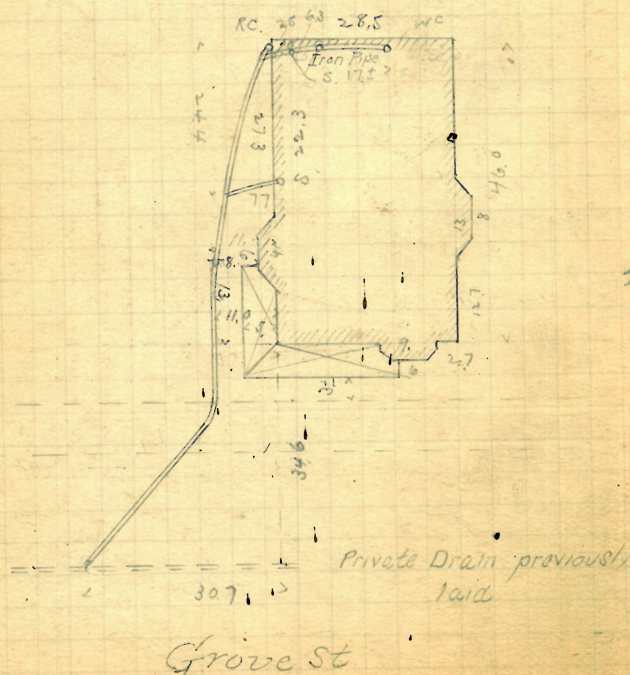


Plotted.

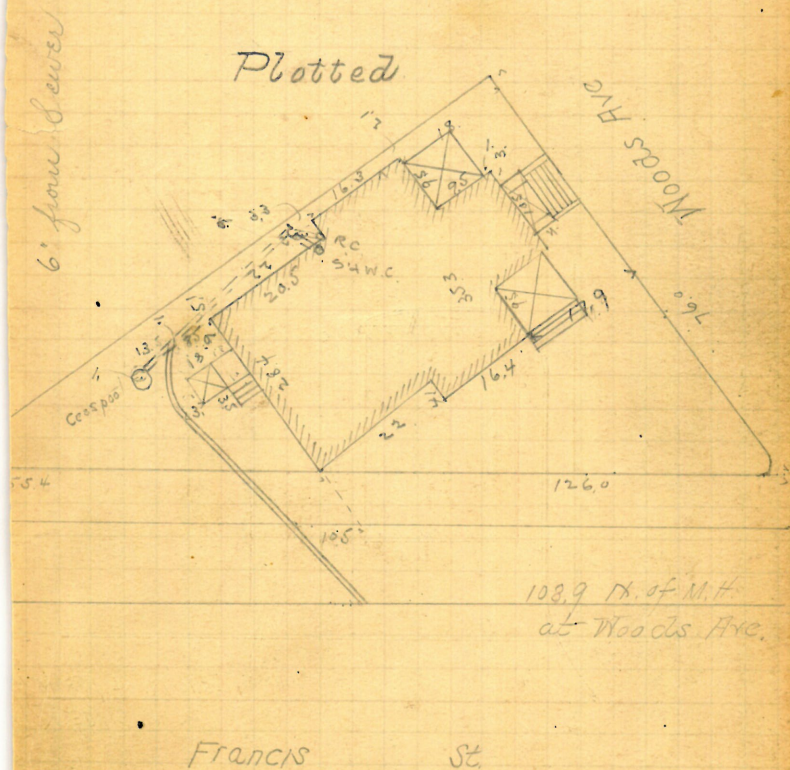
17 S. 2nd M.H.
" Page St

Friendship St

William Harley & Wife
 26-28 Grove St
 Vinton St Siver
 & Frank Read D.L
 Permit 5485
 V Cut at curb 5.0
 Opened Sept 23, 1889
 Closed " " "



Warren R. Perce
67 Brainell St. Cor Francis St.
J. Frank Read D.L.
Permit 5486
Cut at curb 10.4
Opened Sept 27, 1889
Closed " 28. "



Patrick Marlow

89 Cross St

John Keogh D. L.

Permit # 5487.

4

cut at curb 10.5

Opened Sept 23 1889

Closed 1. 24

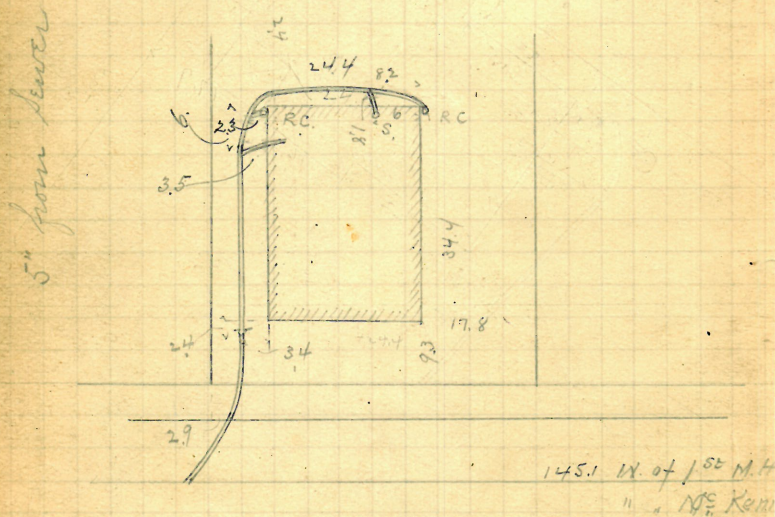
Reopened & closed Aug. 26 1937 - Wm Landry S. L.
 reopened - Nov. 22, 1935

11/ Reopened - Nov, 22, 1935 ✓

12th Closed - Nov. 22, 1935

M. Mc Nally - Clear

Plotted.



Cross St

145.1 W. of 1st M.H.

11 " Mc Ken

Patience M. Hall
 Pine ^{S.E.} ¹⁴¹ Lockwood #141,
 Bernard Brady S.L.
 Permit # 5488

V Cut at curb 9.8
 Opened Sept 24 1889

Closed " 25 "

Opened Mch. 28-1925

Closed " 28-1925

M. Hennessey S. L. -

Opened Mch. 31-1925

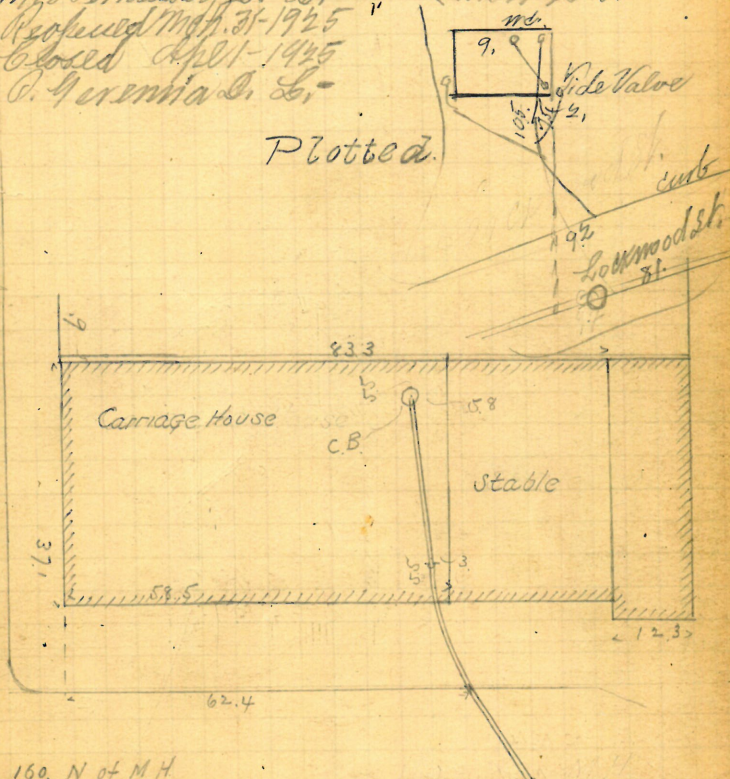
Closed April 1-1925

C. Gernia S. L. -

Sp. Work -
 Mch. 28-31-1925

Plotted.

Pine St. 5" from sewer



160. N. of M.H.

at Friend St

Lockwood St

108

P. - $\frac{158}{34}$

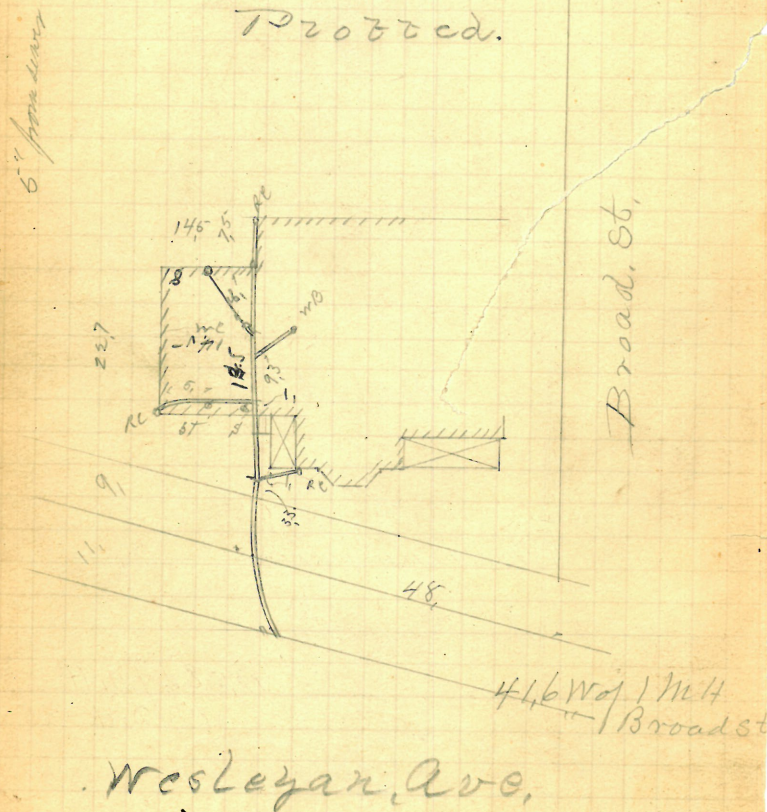
593

Edward E Darling
879 Broad St. NW. Co. W. Va.
Jason A Blackmar D.
Permit 6493

Opened Oct 2 - 1889
Closed " 4 - 1889

Reopened - July 9, 1934
Closed - July 9, 1934
E. Scott - had 4" stack

Proposed.



Prov D B. & C. Co.
 110-116- Cove Cor Mason St
 of Frank Read D. L.
 Permit 5-496

V Cut at curb 6.5

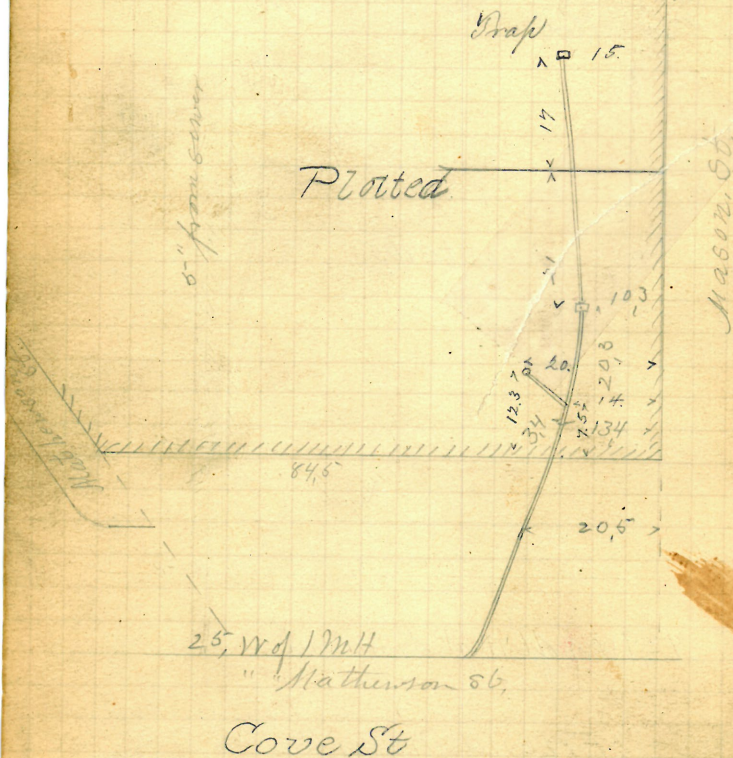
Opened Oct 3 - 1889

closed " 7 - 1889

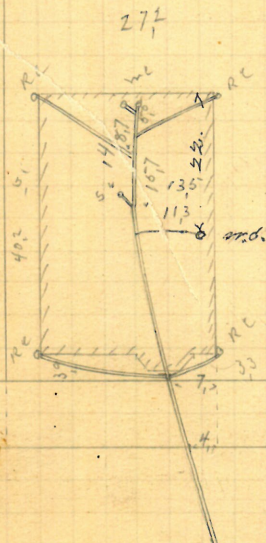
Reopened May 3 - 94

Closed May 3 - 94 J. Holmes & Co. S. S.

Reopened & closed Oct. 15, 97 - J. Deary D. L.



William Carroll
 133 - Lockwotton St.
 David E Barry D.L.
 Permit 5-4906
 X tent at curb 10.5
 Opened Oct 4 - 1889
 Closed " 6 - 1889
 Reopened June 2 - 1919
 Closed " 3 - 1919
 J. E. Mth Intosh D.L.



Platted.

34.5
 35.5 E of 1 M H
 Thompson St.

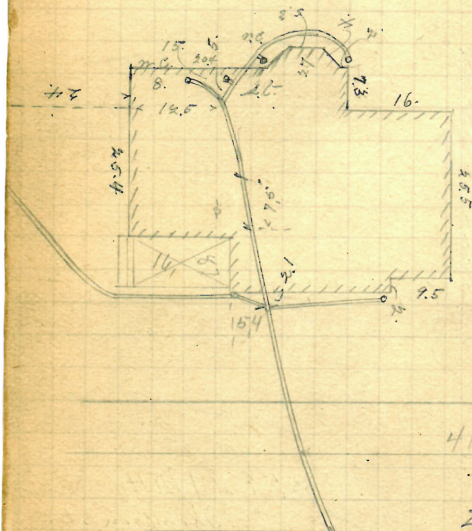
Lockwotton St

John B. Allen
 Young Orchard A
 118 N.W. Cor^{#118} Governor St.
 Frank Read D.L.
 Permit 5497

✓ Cont at City
 Opened Oct 10 - 1888
 Closed " 14 - 1889

Reopened & closed Apr 24 - 1896
 Reopened Sept. 25 - 1899 D. E. Barry D. L.
 Closed " 26 - 1899
 A. W. Colgrove D. L.

Proved.



22 W of M.H.
 " Governor St

Young Orchard Ave

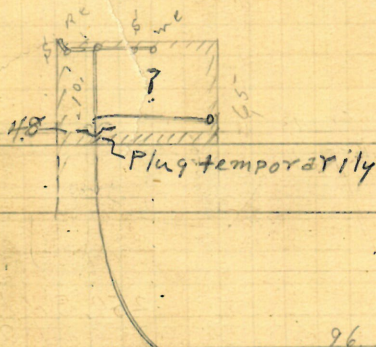
GONE

113

R Anna C Lonsdale
#23 North Main St
Thomas Phillips & Co D.L.
Permit 6498
V Cent at curb 8.8
Opened Oct 11 - 1889
Closed " 15 - 1889
Reopened & Closed June 31 99
N. J. Hogan D. L. - Cleanout
Reopened Dec. 6 - 1915 -
Closed " 7 - 1915 -
H. Matzner D. L. -
Reopened - Apr. 17, 1936
Closed - Apr. 17, 1936
A. Acciaoli - Disconnect temp.

Plotted

Short Alley



26. N of 7 W at Star

N. Main St

Ellen E. Olinstead:

43-45? George St

Permits 6-5-00 Vol 6-5-01 Vol 2

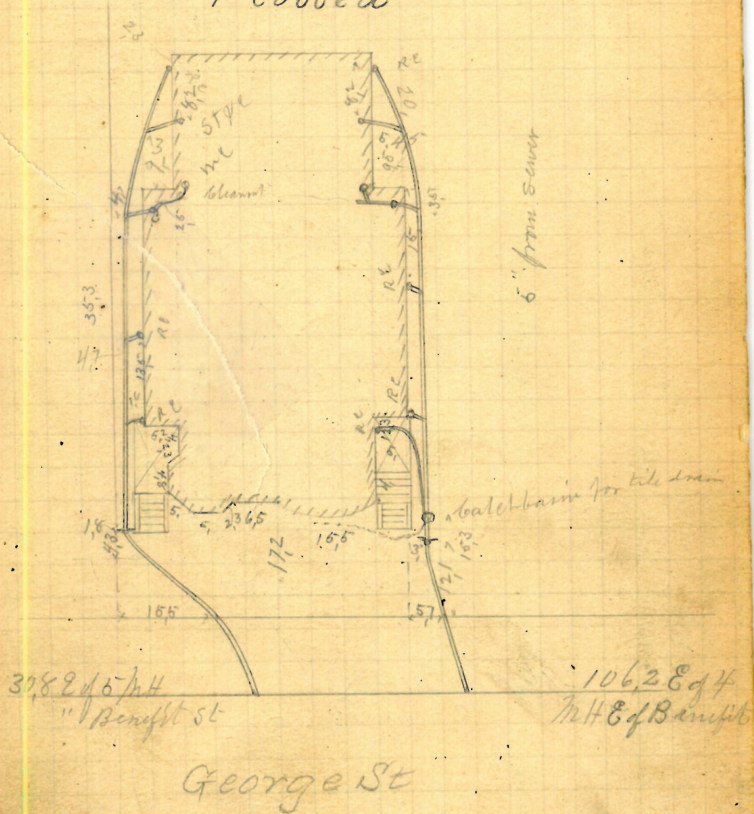
V Cuts at Comb 83-82 Vol 1

Opened Oct-15-1889

Closed " 29-1889

Heram S. Read D. L.

Plotted



Florance A. Stowell
40 Arch St
Patrick J. Turner D.L.
Permit 5502

✓ Cut at least 105
Opened Oct 22-1889

Closed 24-1889

Reopened Jan 18-1923

Closed 11-23-1923

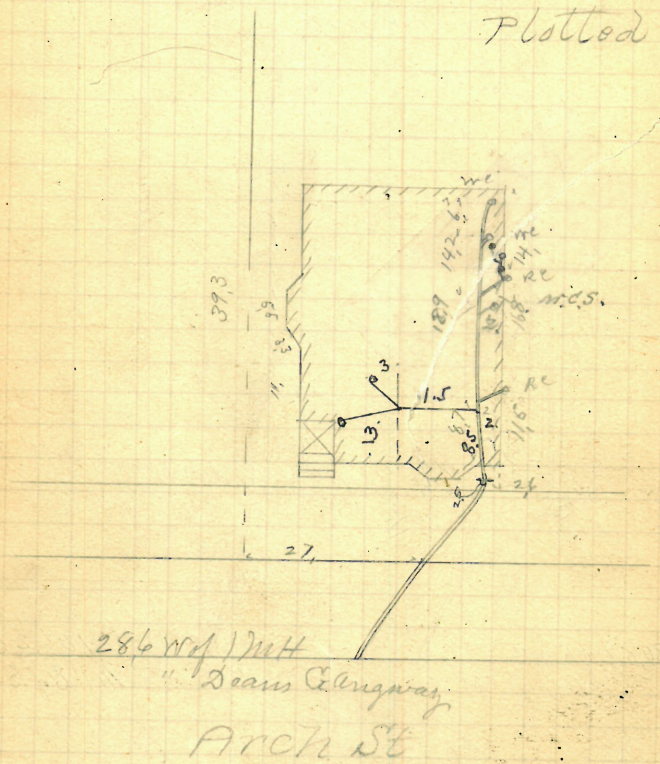
Reopened May 19-1933

Closed May 19-1933

J. E. Duff & Co. -

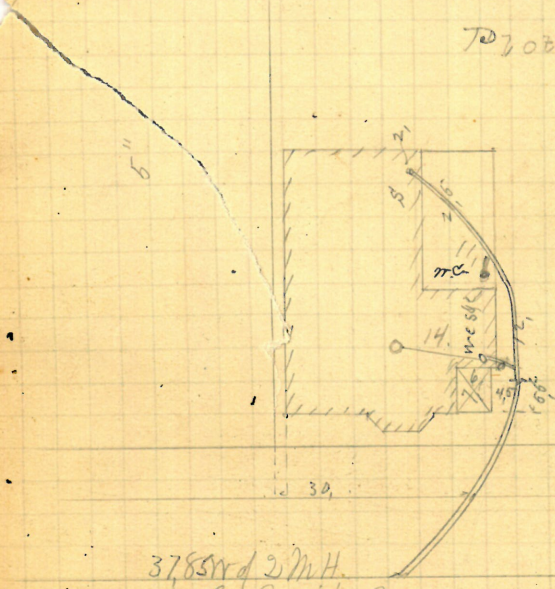
J. Ferrazza & Co. -

Plotted



66 Nels Olson
46 Robinson St
Bernard Brady D.L.
Permit 6503
V. Cent at curb 10.5
Opened Nov 4 - 1889
Closed " 6 - 1889
For Ex. Work done under this permit
Mch 19-1902 See Book 712 Page 73
Proposed closed May 25-06 J. Brady D.L.
Reopened Aug 31, 1931
Closed Sept 4, 1931
J. White D.L.

Proposed.



3785 ft 2 M.H.
E. Prairie Ave
Robinson St

#36.

Rem - 2
Francis A. Bowen

11 Scholfield St.

John W. Furlong D.L.

Permit 55040

V

Cent at least 10.2"

Opened Oct 18-1889

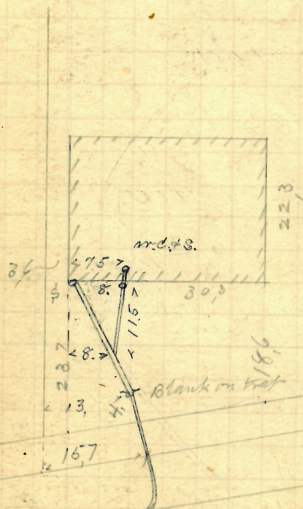
Closed " 21-1889

Reopened & closed July 18th 99

F. H. Read D. L.

Proved

54 ft deep Nov 4-1889 6"

Scholfield St 54.3 Nov 4/1889
Jock written

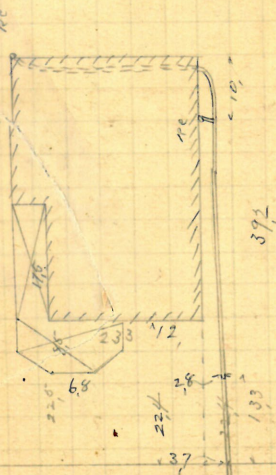
REMOVED

119

254 James Bartlett Jr.
77 Knight St
Jason A Blackmer D.L.
Permit 5505
Cut at curb 10,
Opened Oct 19-1889
Closed " 22-1889

Plotted

5" from survey



588 N of M.H.
5' A rant. st

Knight St

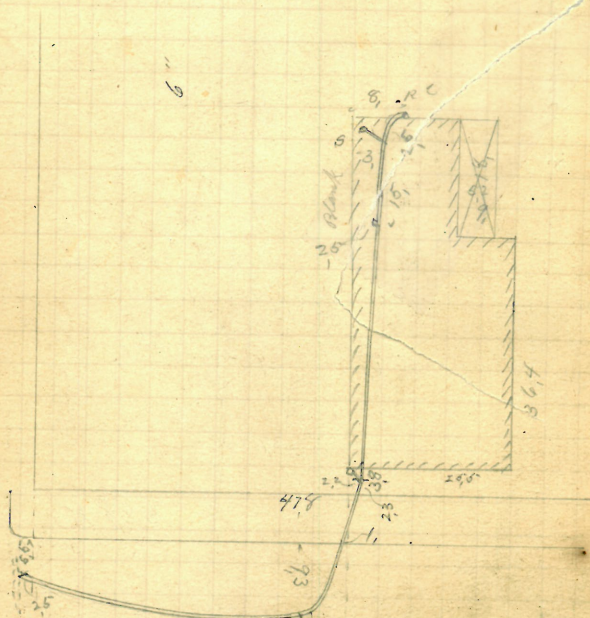
Caleb G Burrows &
Henrietta R

30 - Portland St.
Patrick Tierney DL
Permit 5606

Opened Oct 21 - 1889
Closed 25 - 1889

Plotted.

Vane St.



Portland St

Thomas J Dwyer
 281 Atwells Avenue
 Bernard Brady D.L.
 Permit 5507

✓ Bent at curb 10.2'

Opened Oct 25-1889

Closed " 29-1889

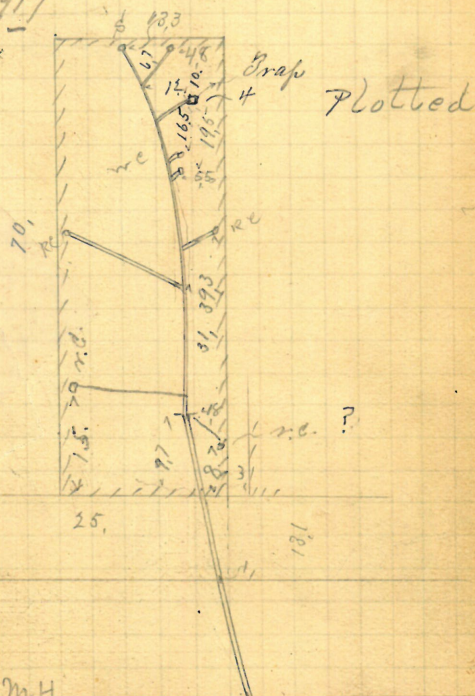
Reopened & closed Mch 6-1906

A. Biello D. L. -

Reopened May 18-1917

Closed " 19-1917

P. Gallo D. L. -



251 W 1st St
 " 2nd St

Atwells Ave

124

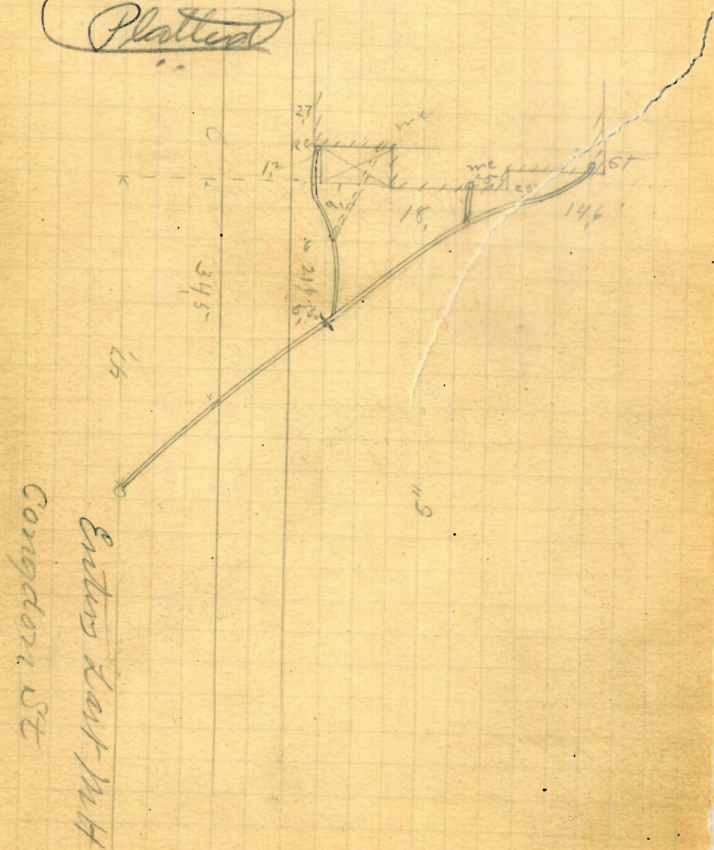
H-170
57

5432 Albert Hoolbrook Jr
Halsey^{nm} Geo Congdon
John Keogh & L
Permit 55-10

Opened Oct 28-1889
Closed " 28-1889

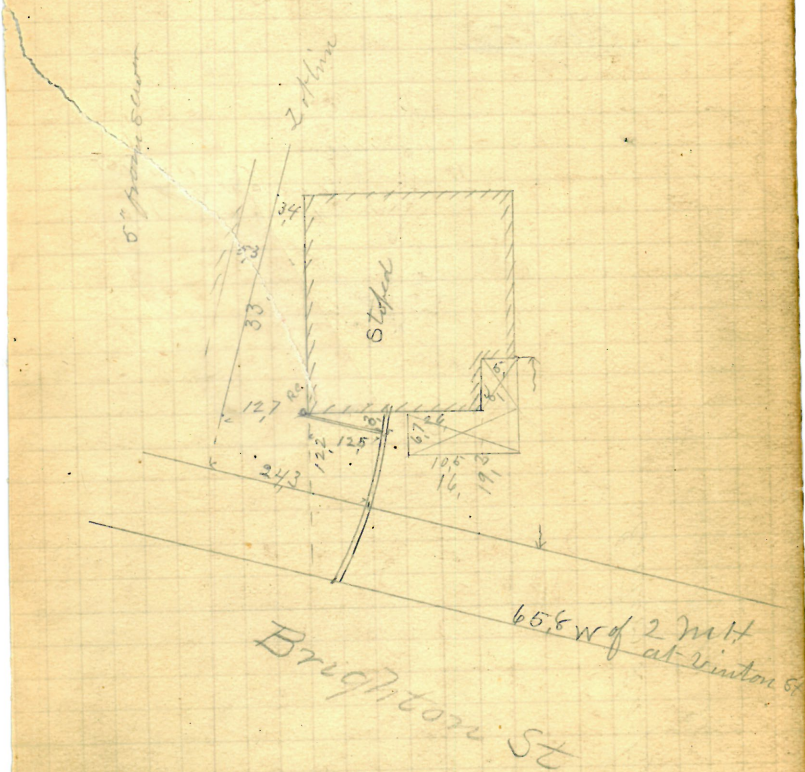
work was done on the 25 Oct
Halsey

(Platted)

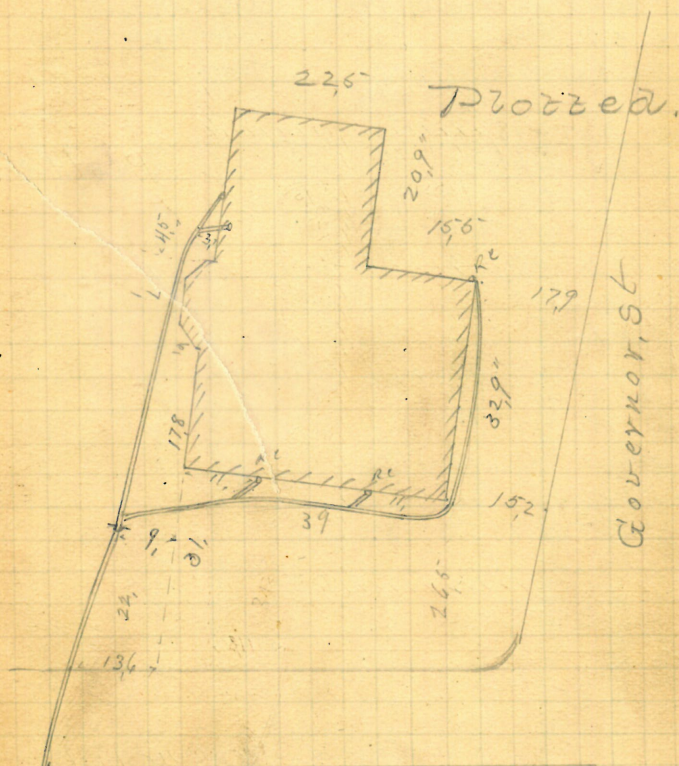


Waldo F. Stocomb
 12- Brighton St
 J. Frank Read DZ
 Permit 5509
 V Cut at curb 10.6
 Opened Oct 28-1889
 Closed " 30-1889

Proposed



Horatio A Hunt
 5 Waterman^{SE} Cor Governor
 Thomas B Ross D.L.
 Permit 6-6-11/89
 Cut at East 6.8
 Opened Oct 29-1889
 Closed Nov 5-1889



64.8 W of 12th
 " 1st St
 Waterman St

126

P

See BP $\frac{32}{48}$ Silver Spring Bq D Co
385 Charles St

J. A. Blackmar D.L.

Permit 55-12

Cut at least 10,3

Opened Oct 29 - 1889

Closed Nov 1 - 1889

Ex. issued July 31, 1941

for work on drain #4728

See 592-12

Permit issued 2/21/44

for work on drain #24751

See 2027-18

9 Reopened - Sept. 26, 1944

25 Closed - Oct. 10, 1944

L. Schiaff - Add

See 159-34

12 Reopened - ?

13 Closed - ?

M. Atamian - Repair

Reopened May 3, 1945

Closed May 7, 1945

add and fine I Hammerhead

Reop. Oct 11 / 50

Clos. Oct 18 / 50

A. Robrish D.L.

4" I-6" V

See $\frac{32}{48}$ Print

See Return

7.5

7.5

7.5

7.5

7.5

7.5

7.5

7.5

7.5

7.5

7.5

7.5

7.5

7.5

7.5

7.5

7.5

7.5

7.5

7.5

7.5

7.5

7.5

7.5

7.5

7.5

7.5

7.5

7.5

7.5

7.5

7.5

7.5

7.5

7.5

7.5

7.5

7.5

7.5

7.5

7.5

7.5

7.5

7.5

7.5

7.5

7.5

7.5

7.5

7.5

7.5

7.5

7.5

7.5

7.5

7.5

7.5

7.5

7.5

7.5

7.5

7.5

7.5

7.5

7.5

7.5

Plotted

Removed

7.5

7.5

7.5

7.5

7.5

7.5

7.5

7.5

7.5

7.5

7.5

7.5

7.5

7.5

7.5

7.5

7.5

7.5

7.5

7.5

7.5

7.5

7.5

7.5

7.5

7.5

7.5

7.5

7.5

7.5

7.5

7.5

7.5

7.5

7.5

7.5

7.5

7.5

7.5

7.5

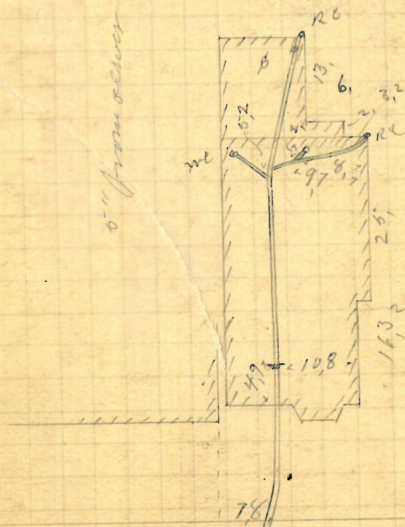
7.5

Charles St

Nancy M Manchester
 454 Broad St.
 Jason A Blackmar D.L.
 Permit 5513

Opened Nov 2-1889
 Closed " 6-1889

Plotted



524 yrd / 1/4 in.

Bryon St.

Broad St

REMOVED

Abby R. Ford J. Clarke
 533 Broad St. Stewart 44
 Patrick Jimmy D L
 Plotted 5-6-14

Opened Oct 31 - 1889
 Closed Nov 4 - 1889

Reopened Nov 22 - 1905

Closed " 23 - 1905

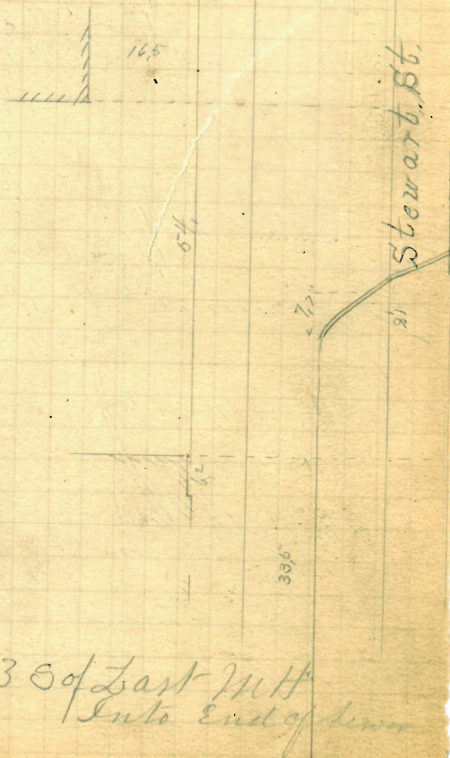
J. Deary D. L.

Reopened May 1 - 1924

Closed " 3 - 1924

E. J. Munnings L. Clemons

Plotted.



129

Ex Francis

Ankasa M. Eaton Att.

59 Francis St B¹ K Co - Willings Alley

John Kioght D L

o a d. St.

Permit 56-75

Cent at Cent 10.3

Oct-30-1889

12/12, Nov 1 - 1889

Received June 5th 94

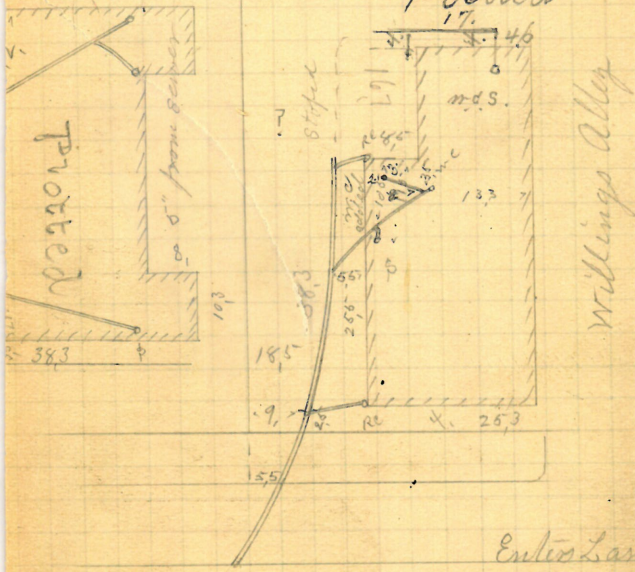
Collected June 5th 1945 P. Bierney & L.

Reopened, Dec. 15-1924.

Closed 11.15.1924

R. H. Berry, D. D.

Plotted



Entire Last-MH, 17N

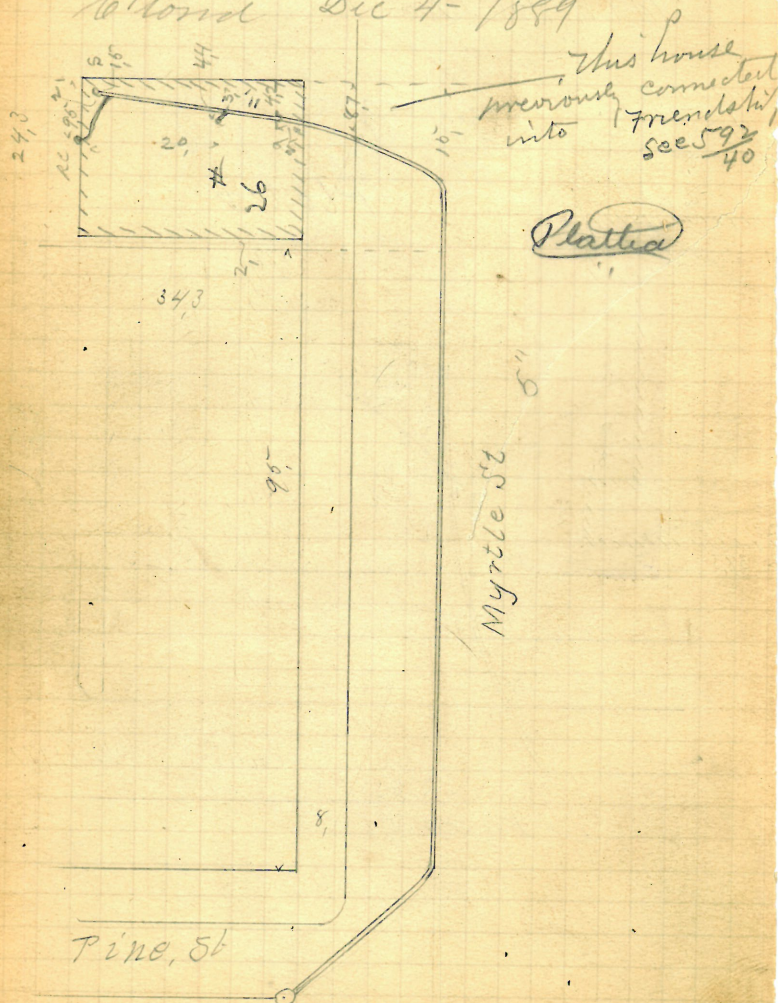
Francis St

130

GONE

Adelaide D Gray and
 Georgianna S Brownell
 26 new 15 Myrtle St
 Jason A Laefemar DL
 Permit 5516

Opened Nov 29-1889
 Closed Dec 4-1889
 Cut at curb 7,



~~REMOVED~~

Wm J. Nichols & Wife

#185

+12 Smith St.

John Keogh D.L.

Permit 153/18

V

Cont at Cont 10,2

Opened Oct 31-1889

Closed " 31-1889

Reopened Oct 31-1914

Closed 1914

J. Deary, D.L. - Chelmsford

Reopened July 18-1915

Closed " 21-1915

C. A. Quirk D.L. -

Reopened Sept 9-1916

Closed " 1916

J. A. Perry D.L. - Chelmsford

2 Reopened - Feb. 17, 1938

16 Closed - Feb. 17, 1938

T. F. Moore, Chelmsford

9 Reopened - 9/17/40

17 Closed - 9/17/40

M. J. Gregorio - add

to bldg

Plotted



60.0 W of 1st St

Park St

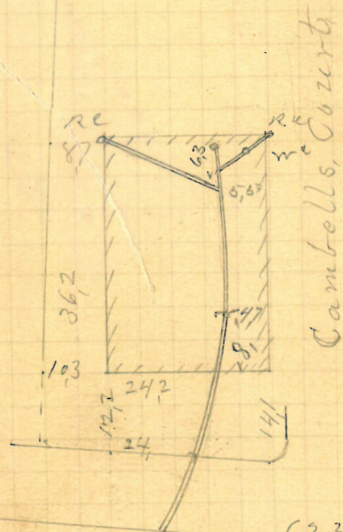
Smith

Removed

133

244 Willard Avenue
Bernard Brady D.L.
Permit 5520
V Cut at Corb 10,
Opened Dec 12-1889
Closed " 31-1889

Noted.



62,3 W of 2 Mi. H
E of Prairie Ave

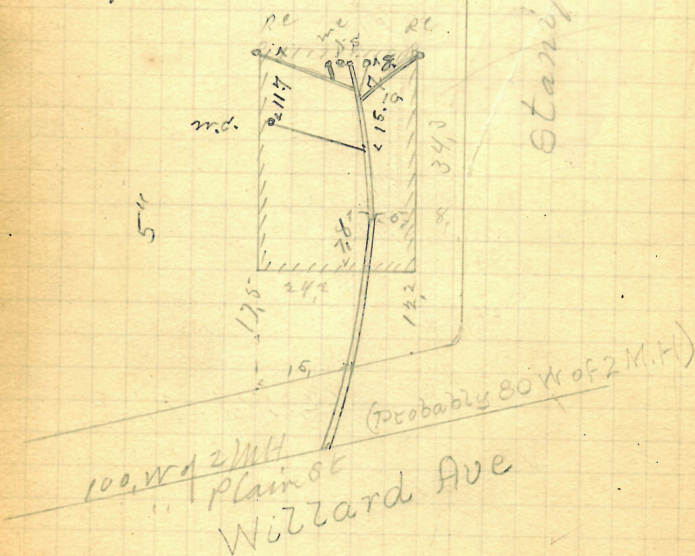
Willard Ave

134

T.P. $\frac{158}{30}$

148
56 William W Rickard
Willard Avenue Cor Stanford
Bernard Brady D.L.
Permit 5621
Cut at cut 10.4
Opened Dec 6-1889
Closed " 26-1889
Reopened Sept. 11-1911
Closed " 11-1911
E. Gibbons D.L.

Reopened July 20 1945
Closed " 23-1945
J. Grand D.L.
" Reopened Dec. 9, 1949
Closed Dec. 5, 1949
R. Keyes - Rem W.C.

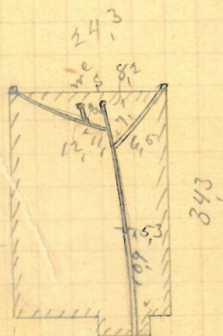


P. - $\frac{150}{30}$

135

William W Rickard
102 Willard Avenue
Bernard Brady D.L.
Permit 5822
V Cent at Cent 104
Opened Dec 6 - 1889
Closed " 11 - 1889

Propped



60.10 ft 2 m ft
Plain St Willard Ave

136

178 Willard Avenue

~~Removed~~~~William W. Rickard~~

Bernard Brady D.L.

Permit 5623

V

Cut at least 104

Opened Nov 8 - 1889

Closed Dec 5 - 1889

Reopened Mar 29, 1918

Reopened Feb 2, 1928

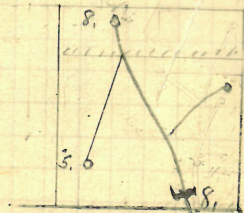
Closed Dec 3, 1918

Closed Feb 2, 1928

H. Debuty D.L.

R. Gorman D.L.

Proced



433 W of M.H.

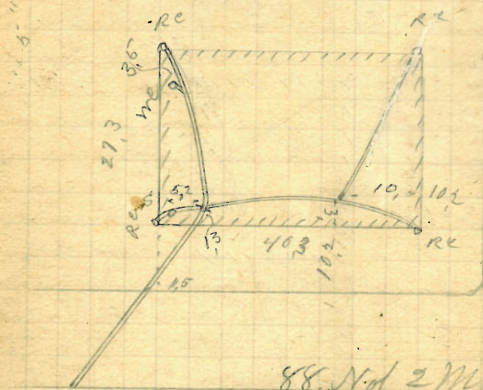
at Angl

Willard Ave

421-423 Wickenburg

Thomas Carr
72 Lane Cor Wickenden & 3rd
Bernard Brady D.L.
Permit 65-25-1
V Cut at limit 8.0
Opened Nov 16-1889
Closed " 18-1889

Plotted.



88, N. of 2 MH

3¹/₂ Wickenden St

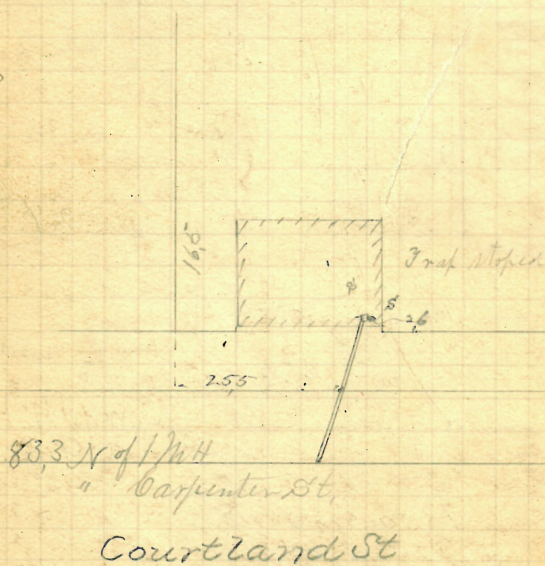
Gano St.

Wickenden, Et.

151

Moses P Darley
 26 Courtland St
 Jason A Blaefman DL
 Permit 55-27
 V Cut at curb 99
 Opened Nov 7-1889
 Closed " 8-1889

Plotted.



Removed

141

69-73 John Grady
47 ~~47~~ Robinson St.
Bernard Brady D.L.
Permit 35-28

Y Cut at Cent 10.2

Opened Nov 7-1889

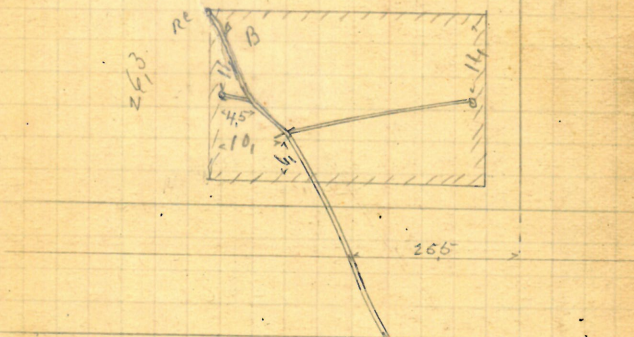
Closed Dec 27-1889

Reopened July 24-1925

Closed 11-25-1925

M. McCall D.L. Elamouk

Plotted.



Robinson St

74.6 W of 2nd
E of Prairie Ave

Removed

143

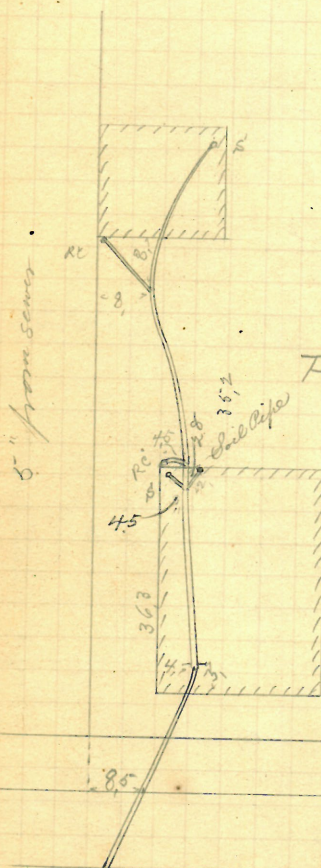
28 Isaac Marks & Wife
18 Robinson St.
Bernard Brady D.L.
Permit 5-5-30
Cut at curb 10.4
Opened Nov 14-1889
Closed " 15-1889
Reopened July 2-1902
Closed " 3-1902
A. Hillo D.L.
Work done under Permit
No 5526 Book 698-89139
Reopened & closed Nov. 30-1912
By J. Leary D.L.
Reopened - Feb. 12, 1938
Closed - Feb. 12, 1938
A. C. Gammino, Clear
Open sidewalk.

Plotted



Thomas C Freeborn Estate
 329 Friendship St.
 Jason A Blackmar D.L.
 Permit 65-31

Opened Nov 12-1889
 Closed " 14-1889
 Reopened & Closed May 8, 94 To M. Godrick D.L.



89.8 E of M.H.
 " Summ

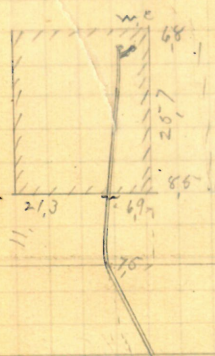
Friendship St

Michael Fitzgerald
 674 North Main St

Daniel J Duggan D.L.
 Permit 5632

V Tent at curb 11,
 Opened Nov 11-1889
 Closed " 13-1889

Plotted.



38154/12/14
 " Pleasant St

N Main St

Removed

147✓

Bartholomew Preston
24 ~~46~~ Robinson St.

24 ~~16~~ Robinson 86

Bernard Brady D.L.

Print 5-5-34

✓ but at least 104.

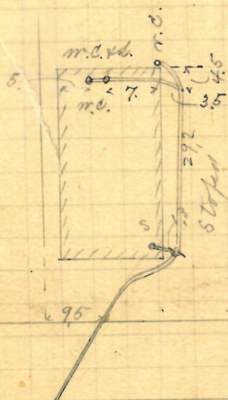
Opened Nov 15-1889

Dec 31 - 1889

Reopened & Closed Oct. 3rd 97 - J. Deary D. L.

Reopened & closed Jan'y 5-1901 - J. Cary & L.

Plotted.



208,2 w of 17M H

Gray St

Robinson St

GONE

149

Michael Maguire
158 - Blackstone Sp.

John Hugh D. L.
Permit 575-36

V

cut at curb?

Opened Nov 16 - 1889

Closed " 18 - 1889

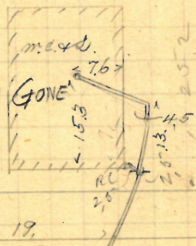
Reopened Sept. 7 - 97

Closed " 8 - 97

J. H. Read D. L.

Plotted

5-4

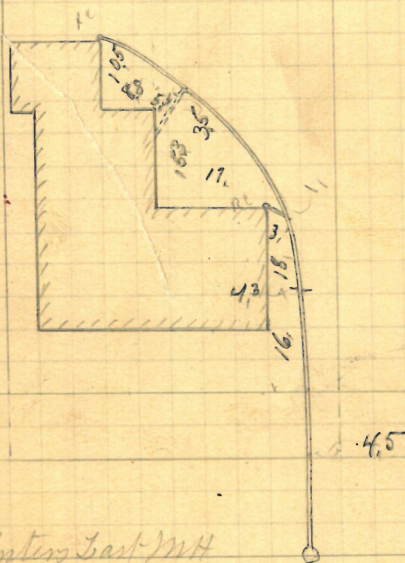


166.2 W of 2 M H
E. Plain St.

Blackstone St

Talbot Bros
 169 Congdon St.
 John Keogh D.L.
 Permit 56-38
 Y Cut at curb?
 Opened Nov 27-1889
 Closed Dec 4-1889

Platted



Congdon St.

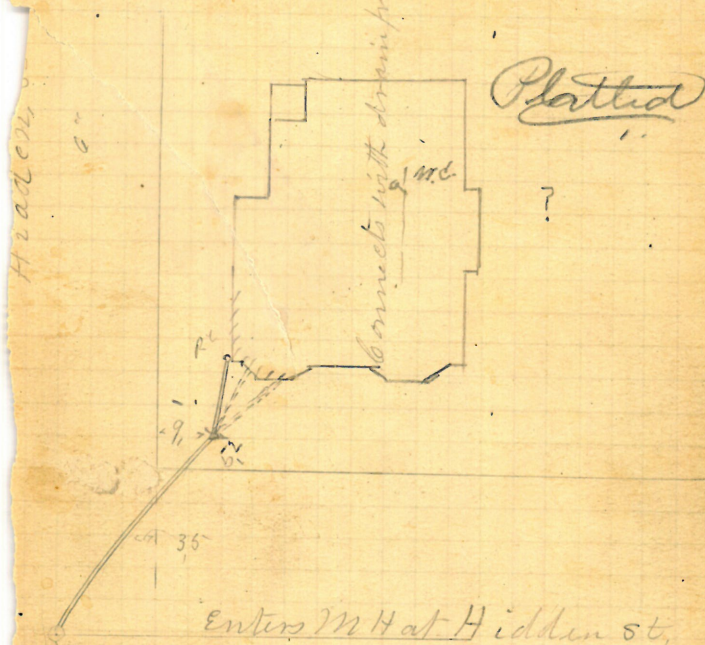
Agnis P. Wightman
 173 Congdon SE Cor Hidden
 John Hoogh D.L.
 Permit 5519

Opened Nov 1 - 1889
 Closed " 22 - 1889

Reopened 1917
 Closed 1917
 J.E. Wright S.C.

Connects with drain previously laid

Platted



Enters MH at Hidden St.

Congdon St

Thomas Murray

6-8 Bishop St

John Knight D.L.

Permit 6-5-42

N

cut at curb 10.

Opened Nov 22-1889

Closed " 25-1889

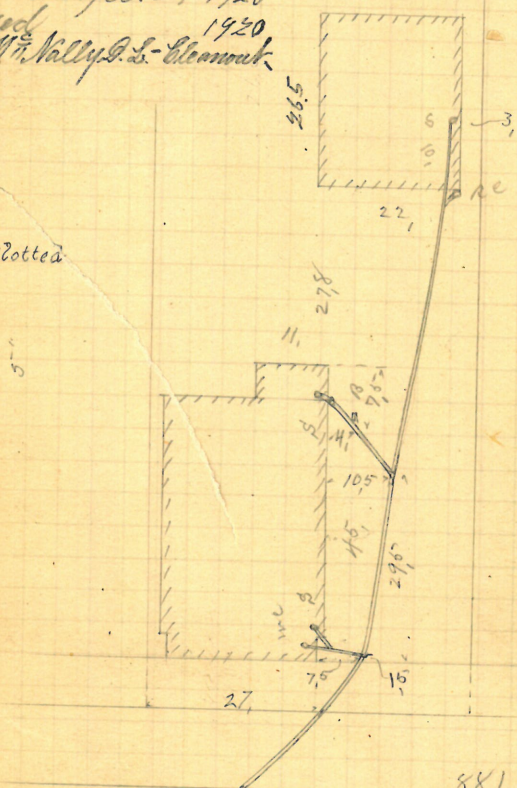
Reopened April 29-1920

Closed

1920

M.M. Kelly & L. Clement

Plotted



88.1 W of 1 Mt.
E Summit

3, Lower down than was located

Bishop St

156

Estate Patrick Murra
64 Bishop St
John Knogh D.L.
Permit 5543

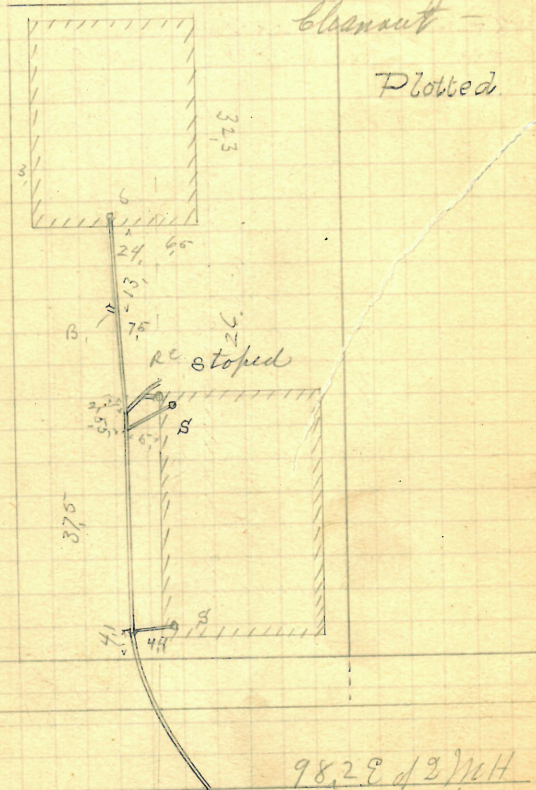
V Cont at curb 9.1

Opened road 21-1889
Closed " 22-1889

Reopened Sept 20/28
Closed Sept 20/28
M. M. Kelly Esq
Clermont -

Plotted.

57' 6"
Omitted to get crossing at curb
can be taken on ground



Bishop St

GONE

157

79 Richard & Catherine Clarke
73 Bishop St.
open Knight St.
permit 5-5-44

Out at curb ?

Opened Nov 16 - 1889

Closed " 18 - 1889

Reopened & closed July 25 - 1905

J. Daary D.L. Cleanout

Reopened May 21 - 1912

Agreed Oct 14, 1930

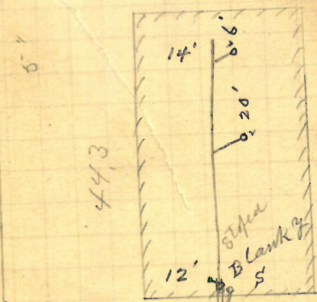
Closed " 22 - 1912

Closed

John Daary D.L.

M. M. Nally D.L.
Cleanout

Plotted.



enters 2 M.H.
E of plain St.

Bishop St.

$$\begin{array}{r} 161 \\ 32 \\ \hline \end{array}$$

William Mc Donnell
83-19-57 Bishop St
John Keogh D.L.
Permit 65-45

Opened Nov 18-1889
Closed " 18-1889

Reopened Feb 29, 1928

Reopened Sept 15, 1931

Closed 1928

Closed 1931

W. McNally D.L.

P. Premia D.L. Blamant

Clearcut

Reo May 23 1949 5/20/49

Reopened July 7, 1936

clo May 23 1949

Closed July 7, 1936

add J. A. Gammon P.L.

S. Lickel - Clear

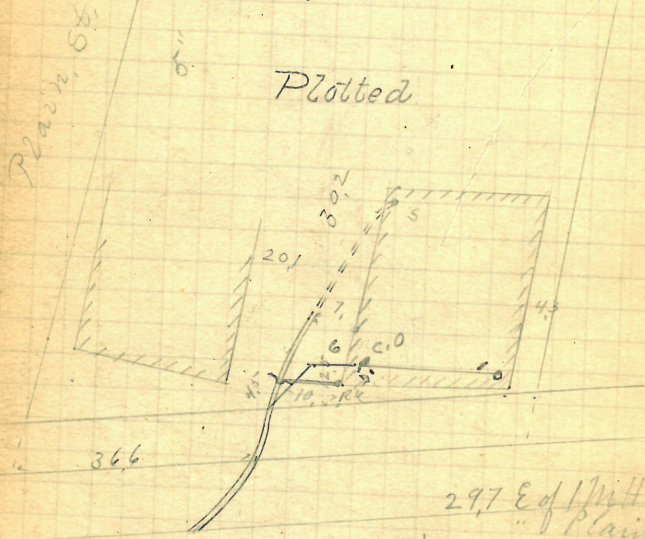
Reo June 8 1949 4/8/49

clo June 8 1949 10/1

add W. C. V. V. P. Del Vecchio

Plain 6'

Plotted



297 E of 1st St
Plain St

Bishop St

Timothy O. Conroy

71 Barnes St.

Anthony R. Barney D.L.

Perry 58-47

cut at level 8.3

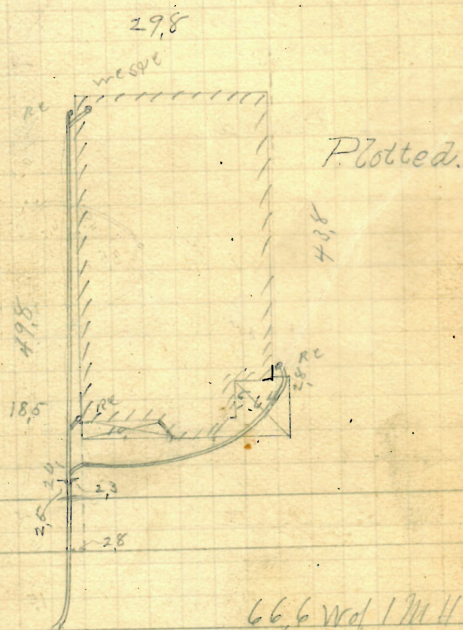
Opened Nov 18-1889

Closed " 22-1889

Reopened Oct. 30/90.

Cloud " 31 "

D. Holmes, D.L.



66.6 W of 1 M H

" Thayer St.

Barnes St

P - $\frac{157}{9}$

16.

161

Aaron B. Curry
 4 - Meadow St.
 Jason A Blackmar D.L.
 Permit, 6-6-48.
 V. Centat-Curt 99
 Opened Nov 19-1889
 Closed Dec 10-1889

Reopened Mch 29-1905
 Closed " 31-1905

J. Appleton D. L.

Reopened Mch 1911

By H. N. Chodacy

D.L. - Cleanout

Reopened May 15-1921

Closed " 6-1921

D. P. Walker D. L.

Cleanout

Rev Jan 23 1946 1/23/46

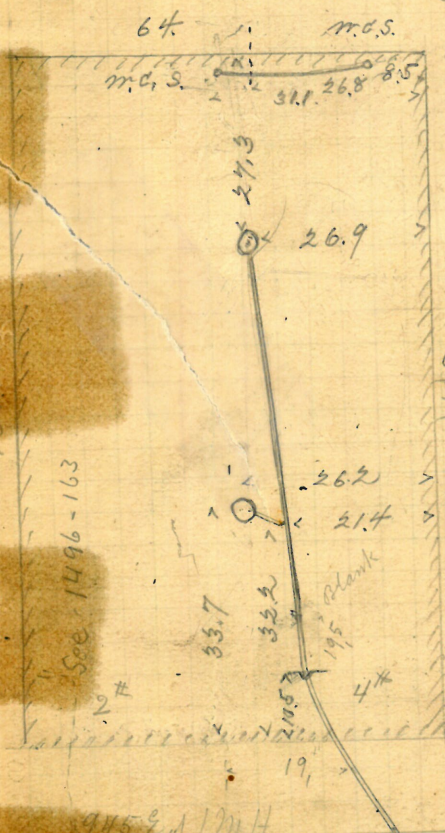
Clo. Jan 24 1946

den of J. W. Manganoni

Plotted

see Book

174 - 64



See 1496-163

2#

945 E of M.H.

Lockwood St.

Meadow St

62 162

Est David L Aldrich
126 Broadway
Bernard Brady & Co
Permit 156-49

Opened Nov 20-1889
 Closed " 23-1889
 11/23/1921

Received July 13, 1931

15. 11

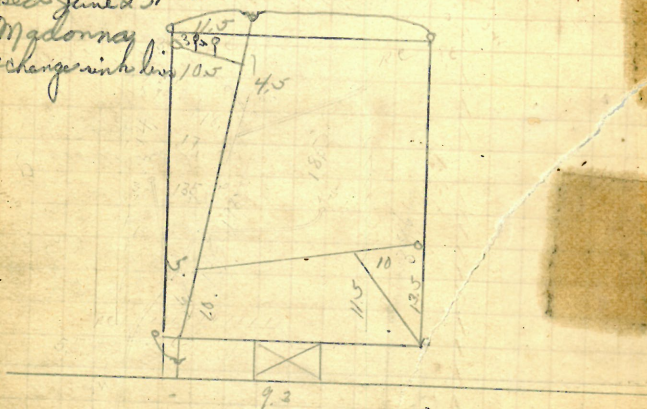
Reopened June 23/

Closed June 23/93

M. Madonna
new & chance sink line

Renew & change sink line 105

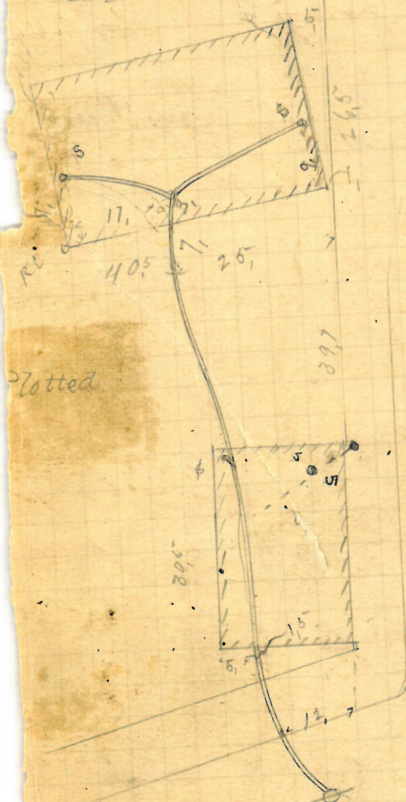
Plotted



3.8 W of 3 mi H
: " Pallas St

Broadway

Edward McGovern
 Bishop Co Plain 274-280
 Bernard Brady & Co
 Permit 8550
 Out at least 103
 Opened Dec 4-1889
 Closed " 6-1889



P 170-65

Plain, St

Enter 1/11/11
 Bishop St

Prov Institution for Deaf
 2 Myrtle Street 13 road 770
 Frank Road D Z
 Permit 6561

But at least 104'

Opened Nov 25 - 1889

Closed " 29 - 1889

Reopened March 25 - 1889 by Wm. Phillips

Reopened April 30 - 1909 - Reopened May 22 -

Closed " 30 - 1909 - Closed " 22 -

J. E. Collins D. S. - J. Fitzpatrick D. S.

Reopened Jan 21 - 1921

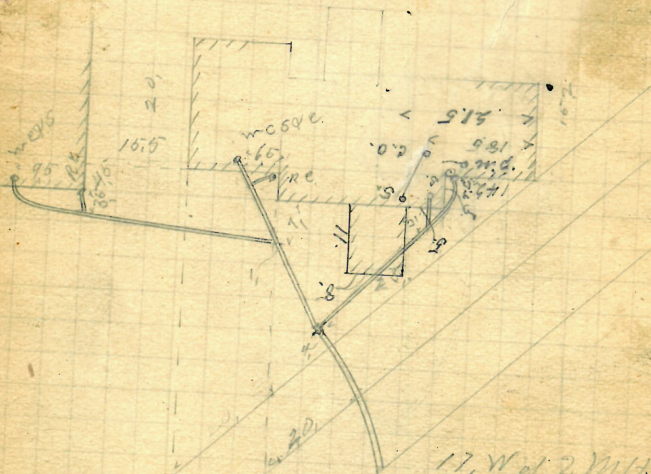
Closed " 21 - 1921

J. E. Fitzpatrick D. S. -

Clearhouse -

Plotted

Broad St



17 W of 2nd St
 Pine St
 Myrtle St