

THE CITY OF PROVIDENCE
STATE OF RHODE ISLAND AND PROVIDENCE PLANTATIONS

RESOLUTION OF THE CITY COUNCIL

No. 359

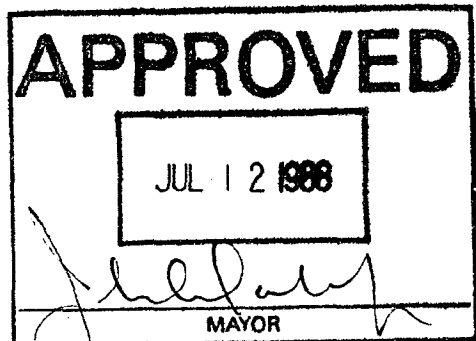
Approved July 12, 1988

RESOLVED, That the Traffic Engineer is requested to cause crosswalks to be painted along Broadway at its intersections with Knight Street, Vinton Street and Battey Street.

IN CITY COUNCIL
JUL 7 1988
READ AND PASSED


PRES.


CLERK



THE CITY OF PROVIDENCE
STATE OF RHODE ISLAND AND PROVIDENCE PLANTATIONS

RESOLUTION OF THE CITY COUNCIL

No. 360

Approved July 12, 1988

RESOLVED, That the Traffic Engineer is requested to establish a "loading zone" from the corner of Eddy Street and Elm Street on the westerly side of Eddy Street, to the end of the building where the delivery door is located along the building of the Department of State Library Services located at 300 Richmond Street, and

BE IT FURTHER RESOLVED, That a "No Parking" zone be established from the corner of Elm Street and Eddy Street, along both sides of Elm Street, past the garage door on Elm Street.

IN CITY COUNCIL

JUL 7 1988

READ AND PASSED

Richard W. Ertson
PRES.

Rebecca M. Mendenhall
CLERK





STATE OF RHODE ISLAND AND PROVIDENCE PLANTATIONS

DEPARTMENT OF STATE LIBRARY SERVICES
95 Davis Street
Providence, R.I. 02908-5099
(401) 277-2726

June 9, 1988

Mrs. Rose Mendonca, City Clerk
City Clerk's Office
Providence City Hall
Providence, RI 02903

Dear Mrs. Mendonca:

As Director of the Department of State Library Services, I would like to request that the City of Providence establish a loading zone and a no parking zone at our new headquarters at 300 Richmond Street. The enclosed map has been marked to indicate where we are proposing that these changes be made:

- 1) A loading zone from the corner of Eddy Street and Elm Street on the west side of Eddy Street to the end of our building where the delivery door is located. This is needed so that library materials can be delivered and picked up by cars which stop 3 or 4 times daily. The United States Postal Service also delivers and picks up large hampers of talking books for the blind on a daily basis.
- 2) A no parking zone from the corner of Elm Street and Eddy Street on both sides of Elm Street past the garage door on Elm Street. This is needed so that we can use this for our bookmobile, which is 29 feet long and 8 feet wide. Without this no parking zone, it will be impossible to maneuver this vehicle, which is used on a daily basis, into and out of the garage.

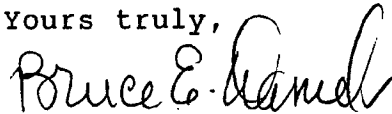
I realize that these requests will have an impact on available on-street parking in the area; however, I believe that they are essential for this Department in providing library services to the people of Rhode Island. We plan to move into our

Page Two
Mrs. Rose Mendonca
June 9, 1988

new headquarters at 300 Richmond Street in late July or early August. I would like a reply from the City of Providence in response to this request, so that we can proceed with our move.

If you have any questions or need further information from us, please contact Dorothy Frechette at 277-2726.

Yours truly,

A handwritten signature in cursive script, appearing to read "Bruce E. Daniels".

Bruce E. Daniels
Director

BED:emg
Enclosure

AUTO BODY SHOP

NO PARKING
REQUESTED

(Currently no parking)

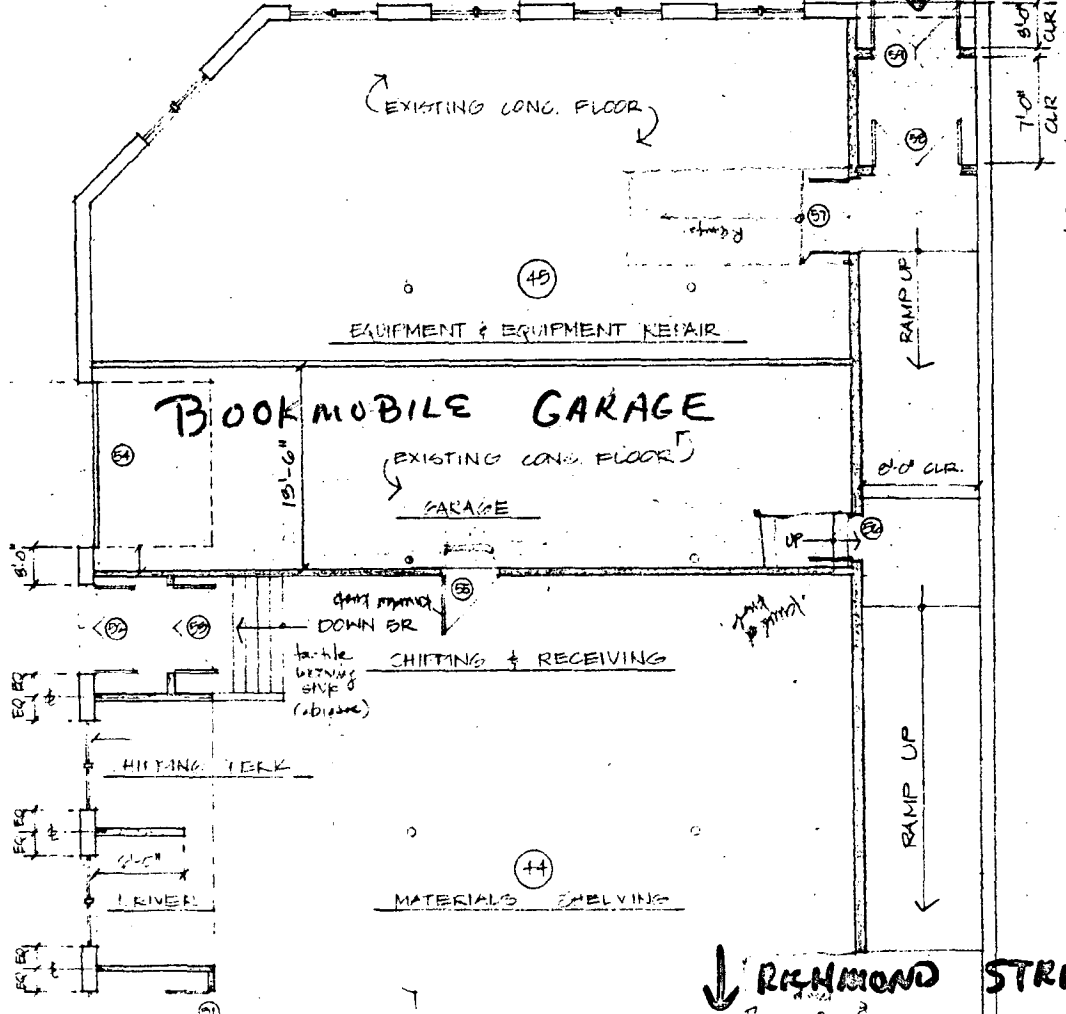
Elm Street

NO PARKING
REQUESTED

LOADING
ZONE REQUESTED

EDDY STREET

DELIVERY
DOOR



RAYMOND STREET