

RESOLUTION OF THE CITY COUNCIL

No. 346

Approved JUNE 18, 2007

WHEREAS, The City of Providence has deemed its 1950 Crane (Serial No. 22497) and one (1) Trailer (Formerly City Plate No. 267) as obsolete pieces of equipment no longer viable tools for the City of Providence; and

WHEREAS, The City of Providence is working hard to provide resources to the Dominican Republic and has in the past donated firefighting equipment and learning tools; and

WHEREAS, The City Council requests the transfer of the following equipment to the Dominican Republic:

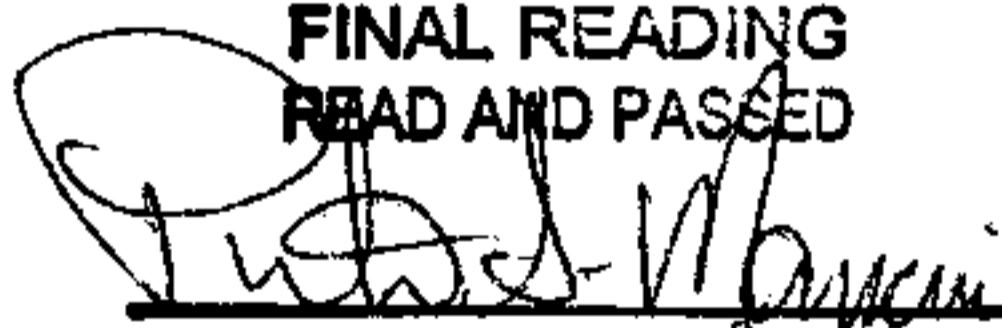
1 (one) – 1950 Crane Serial No. 22497

1 (one) – Trailer Formerly City Plate No. 267

NOW, THEREFORE, BE IT RESOLVED, That the City of Providence take any and all appropriate action to donate said equipment to Mayor Amado De La Cruz, Hato Mayor del Rey, Dominican Republic.

**IN CITY
COUNCIL**
JUN 7 2007

FINAL READING
READ AND PASSED



PRESIDENT



CLERK

APPROVED


MAYOR 6/18/07



República Dominicana

Ayuntamiento del Municipio de Hato Mayor del Rey, R. D.

Marzo 30, del 2007

Señor

Peter Mancini

Presidente Sala de Regidor

Ciudad de Providence, RI

Distinguido señor:

Mediante la presente estamos extendiéndole la mas cordial felicitación por haber sido electo para la posición que ostenta en estos momentos, y a la vez aprovechamos esta ocasión para solicitarle a manera de donación **Una Grúa y un Trailer**, los cuales se pondrán al servicio de nuestro Municipio, ya que cuando llueve se atascan muchos desechos, incluyendo árboles grandes, ocasionando desbordes en nuestros Ríos, por lo que tenemos suma urgencia de adquirirlos.-

Confianto en su buena disposición de servir a nuestro Municipio, le saluda,

Atentamente,

407

Armando de la Cruz
Síndico Municipal

Letter: Below is the english translation of the attached communication.

Dear Council President,

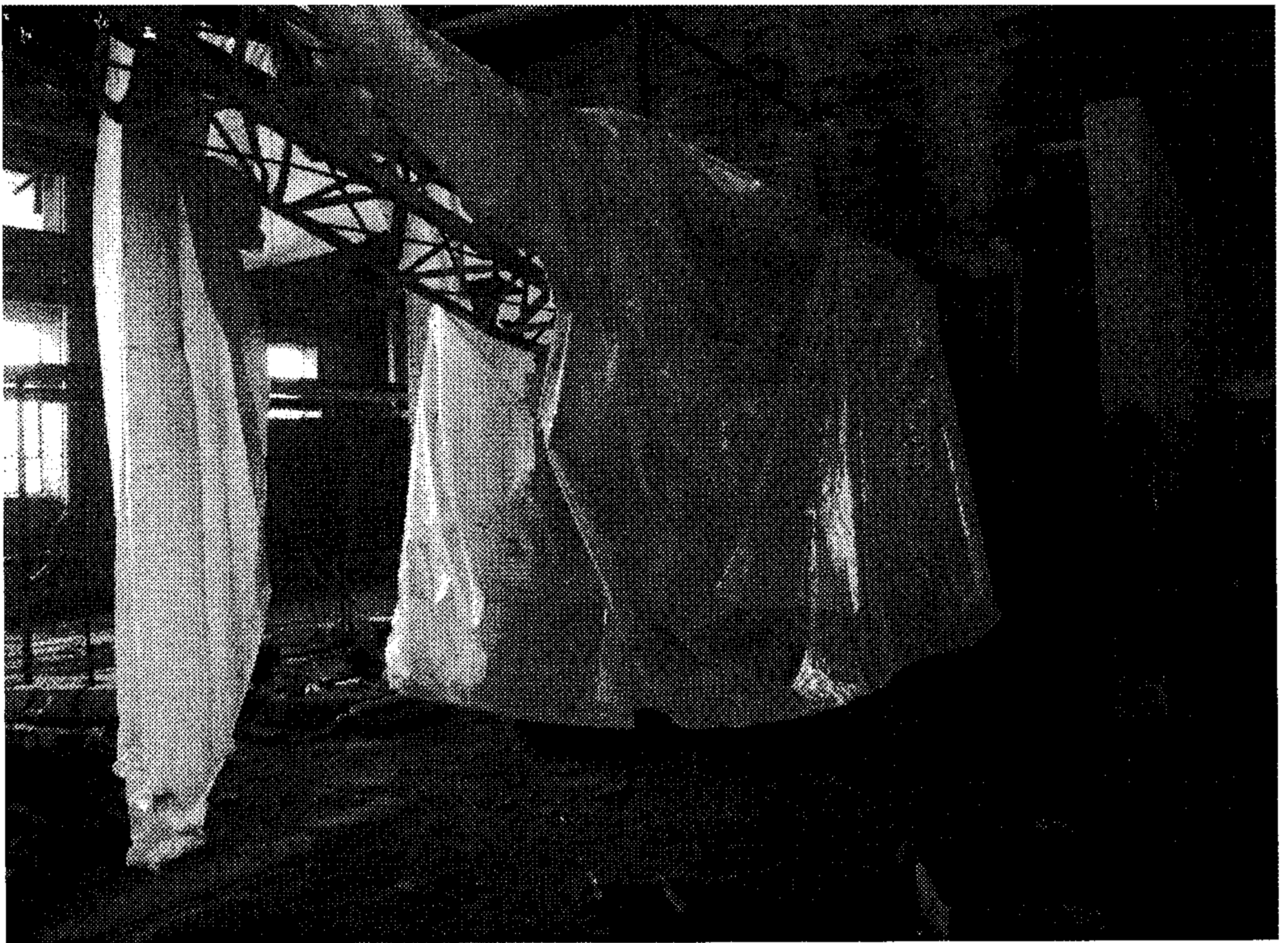
Congratulations on your recent election as council president. I am sure you will do the residents of Providence well. I write to you today to ask for your help. In our city we have a problem with flooding. The flooding occurs because the main river in the center of the city gets jammed with debris every time it rains, so we are in desperate need of a crane, and trailer. The crane will play an important role in getting the debris out of the river, and with the trailer we will be able to transport it to the landfill. I appreciate your time and consideration.

Regards,

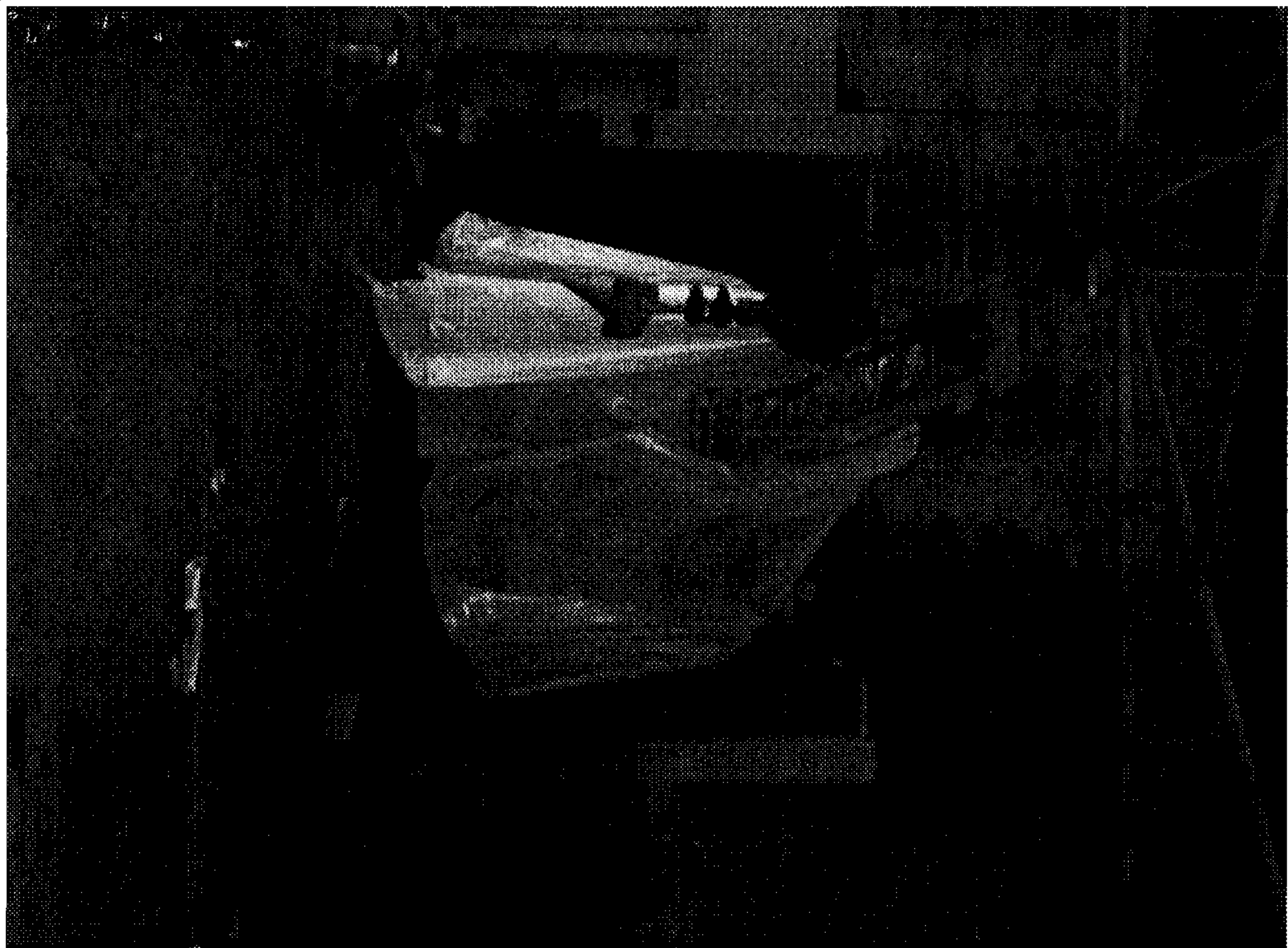
Amado De La Cruz

*Please note: the city of Hato Mayor falls into our Sister City Program with Santo Domingo

Translation by: Andy Andujar



1950 CRANE
SER
H 22497
203-600N







DRN.

City Plate # 267

NO SERIAL #

TRAILOR