

INDEX.

NAMES OF STREETS.	PAGE	SIZE OF SEWER	REMARKS.
Angell	25	18" B.	From Brook to Hope.
"	"	12" P.	" " " Thayer
"	"	12" P.	" Benefit to just above Prospect
"	26	12" P.	" Thayer to point above Brown
"	"	"	" Mayland Ave. to Gano Street
"	"	"	" Arlington Ave. to Gano Street
Arnold	28	12" P.	From Hope to East
"	"	"	" Brook to Hope
"	"	"	" Benefit to Mohawk alley
"	"	"	" Brook to Mohawk alley
"	"	"	" East to Governor
Amos	28	"	" Canal to North Main
Arch	29	"	" Greenwich St. to point 150' west of ^{Junction} St.
Aborn	30	"	Westminster to Washington West Exchange to Atwells Ave.

INDEX.

NAMES OF STREETS.	PAGE	SIZE	REMARKS.
Williams 129	10		B. R. Talbot,

INDEX

[illegible]

INDEX

[illegible]

INDEX

NAMES OF

STREETS

PAGE SIZE

REMARKS.

Ludwig Pottor

36 *Gilmore St.*

Frank Road.

H.L. - Permit 2768

V Cut at curb 10.4

Opened Mar 8-1880

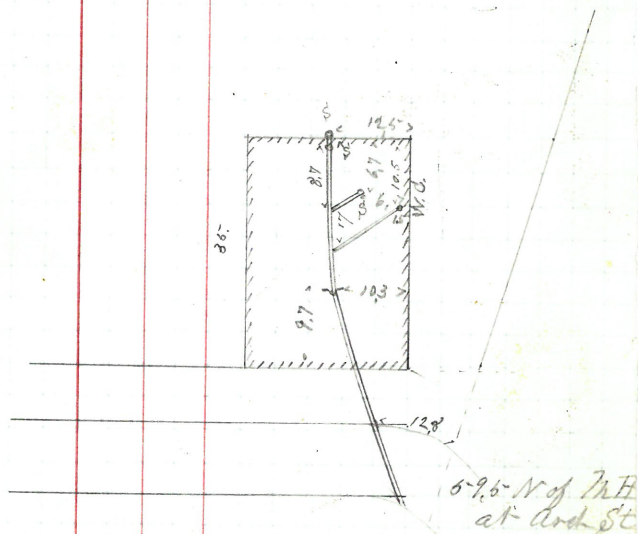
Closed " 10-1880

Reopened Oct 20-1893

Closed Oct 20-1893

J.B. Chassey & Co.

Plotted



Gilmore St.

Elizabeth & Sherman

Colas St.
Hiram S Reed

Airam S Read

10. L.

Permit 2769

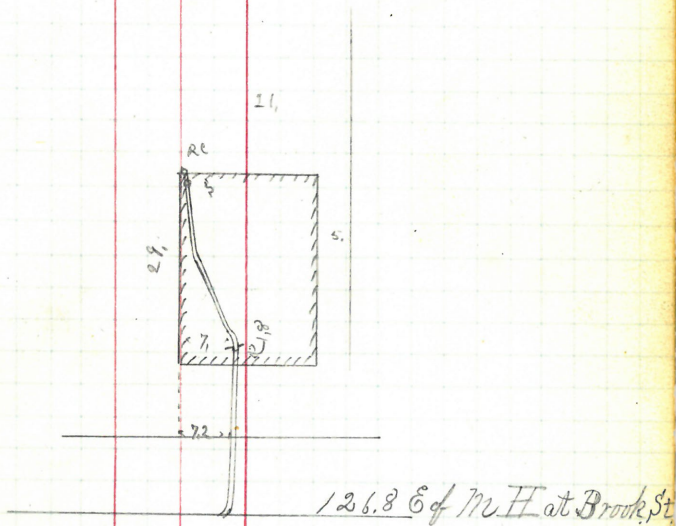
v

Tent at curb 105

Opened March 8-1880
Closed " 12-1880

Closed " 12-1880

Plotted



Coles, St

72-74

Bridgham St.

of Frank Read

Permit 2771

Cent at Cent 10.8

Opened March 23-1880

Florida Apr 16-1880

Received Oct. 16-1922

closed 11-17-1922

Wm. Lyons D. L. Seaboard

Plotted



43.6 N of M.H. 94

" Kendall St.

Bridgham, St.

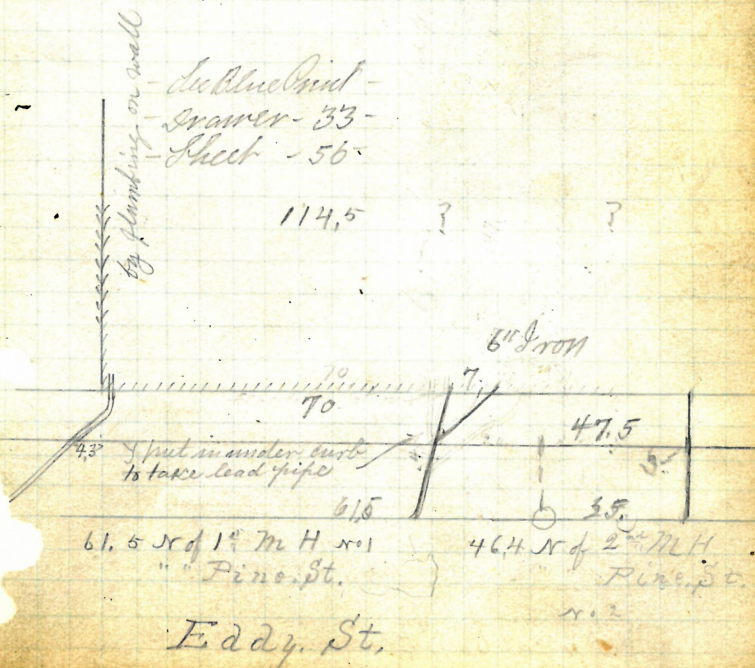
Wm. Governor & Others
125 Eddy St.
Hiram, S. Read

Open Mar 27-80 Permit 2773-2774
" 29-80. ✓ Cut at curb
Opened March 26-1880 6,8 Nov
Closed " 27-1880 7,2 Nov
Reopened Left 24-1880
Closed Oct. 12-1880

Reopened Aug. 17-1900 Reopened Oct. 14-1920
Closed " 18-1900 Closed Dec. 1-1920
E. R. Blackman S. L.
Reopened Sept. 28-1900
Closed Oct. 2-1900
E. R. Blackman S. L.
Reopened 1927
Closed 1927
E. Roscoe S. L.

Plotted

Reopened 1927
Closed 1927
E. Roscoe S. L.



Francis W. Carpenter
14 Congdon St.
Daniel J. Duggan
D.L.

Permit 2776-

✓ Cut at curb 8.

Opened March 29 - 1880

Closed Apr. 15 - 1880

Reopened Apr 22-1909

Closed " 23-1909

J. Deary D. L. -

10 Reopened - Oct 5, 1937

* Closed - Oct. 5, 1937

on M.C. Nally - add C.B.

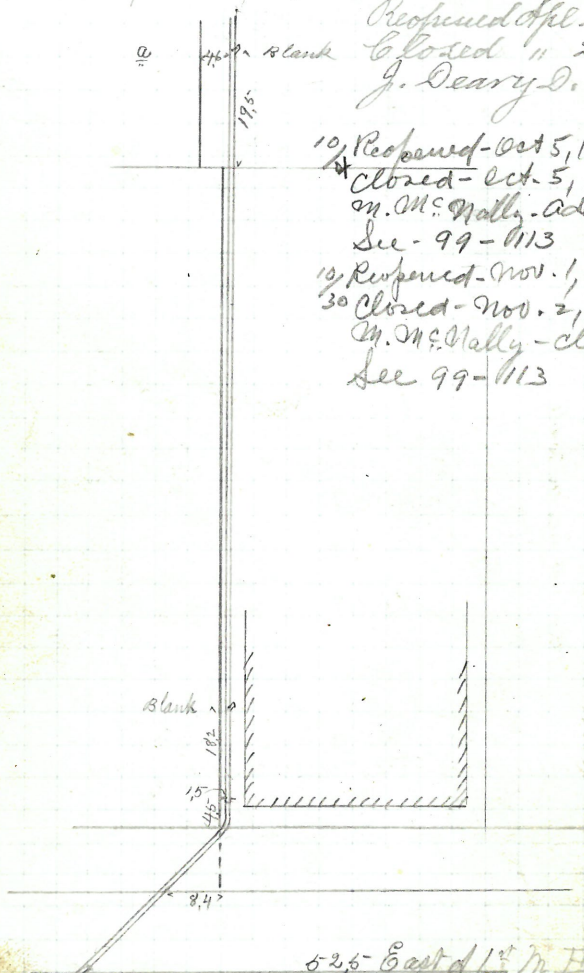
See - 99-1113

10 Reopened - Nov. 1, 1937

30 Closed - Nov. 2, 1937

on M.C. Nally - clear

See 99-1113



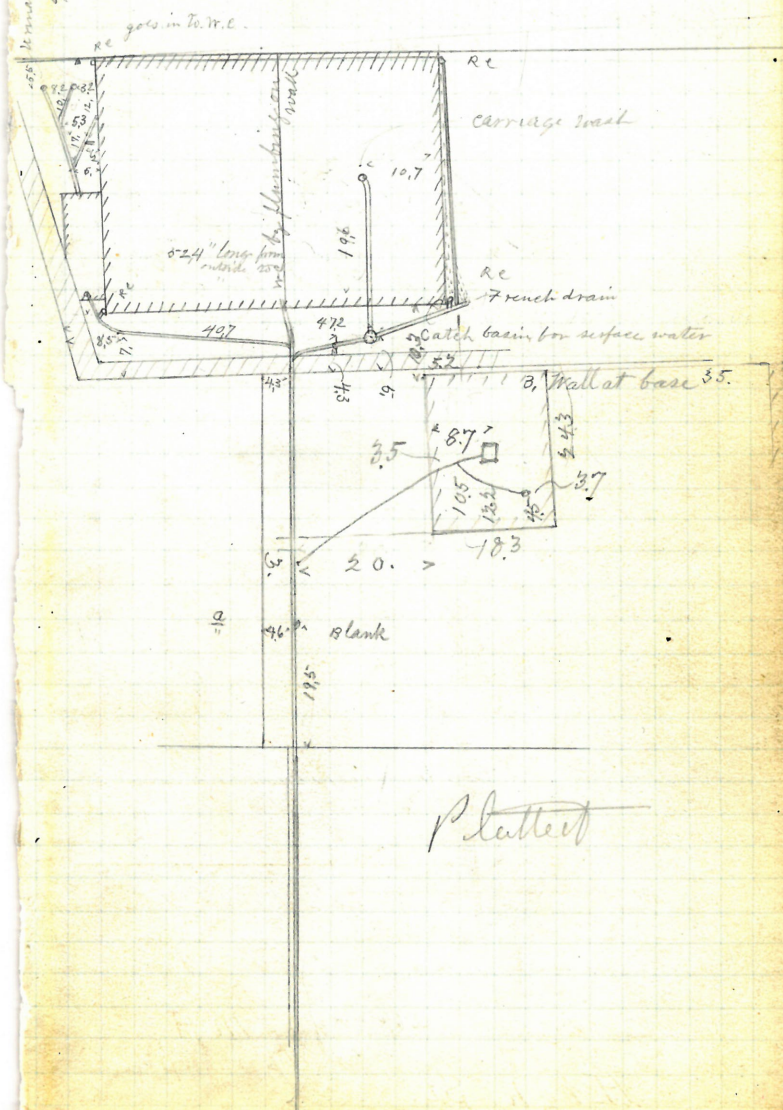
52.5 - East of 1st N.H.

Benefit St.

Angell St.

see: Book / 2565
Page / 121

42.10"



P. Lattest

30

Removed

Nathan C. Lockling
 330 High St.
 Oliver C. Moulton
 D. L.

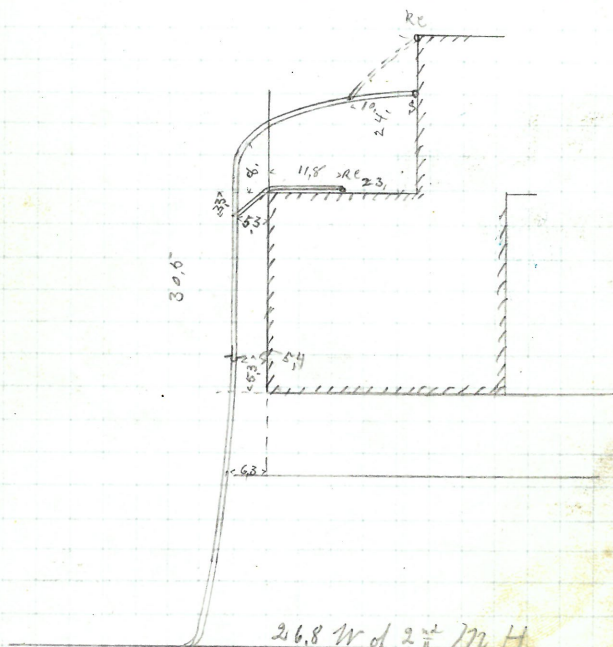
Permit 2776

V

Cut at curb 7.9

Opened March 29-1880
 Closed Apr 1st-1880
 Ex. issued 1/21/44 for
 work on drain #24470
 See 2008-43

Plotted



High St.

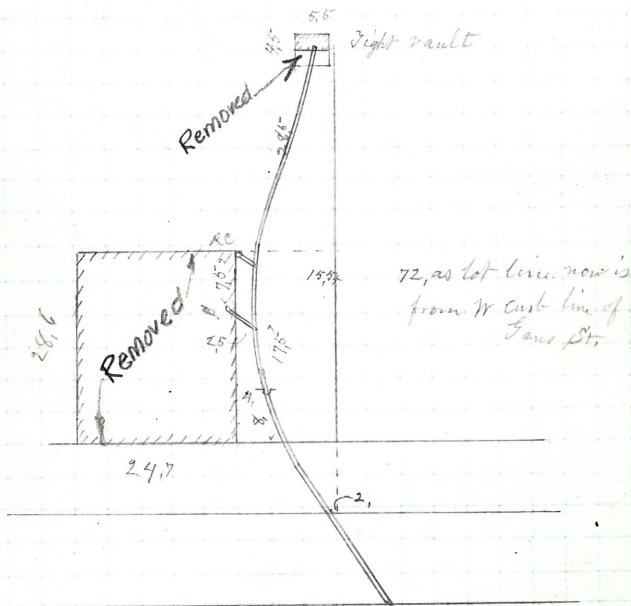
Spring St.

Patrick Kelen
280 India St.
John Hugh

D.L.
Permit 2778
Cut at curb 8.9

Opened Apr 8 1880
Closed " 20-1880

Plotted



India St

38.5 W of 1st N H
" " Sans. St.

II-157
6

33

Elisha M. Brown
473-477 High St.
Jason A Blackmar
D.L.

Permit 2779

✓ Cut at curb 10.

Opened Apr 2-1880

Closed " 6-1880

Reopened to cleanout mch 12-1902

E. B. Blackmar D.L. —

Reopened May 26-1926

Closed " 11-26-1926

J. S. Williams D.L. - Plotted



Enter sewer 6' East of man hole at Congress St

Henrietta M. E. Brownell
 44 Peck St.
 Asa K. Lilly
 D. L.

Permit 2781

✓ Cut at curb 4.7

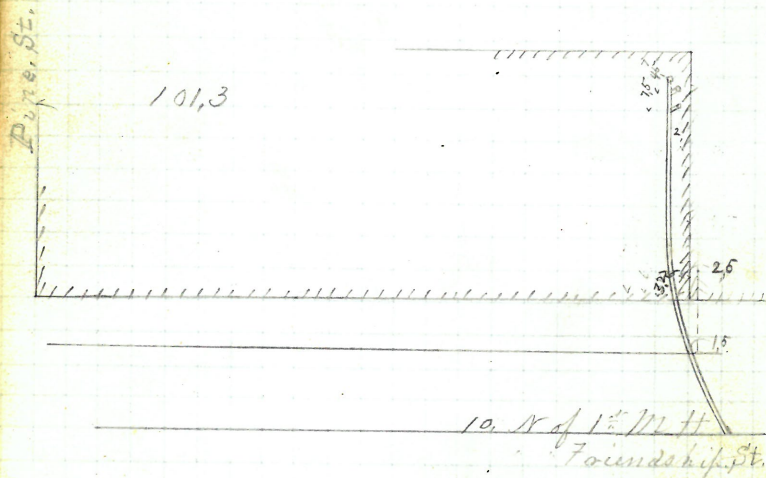
Opened Apr 6-1880

Closed " 7-1880

Reopened March 24-1882

Closed " 25-1882

Plotted



Peck St.

Removed

35

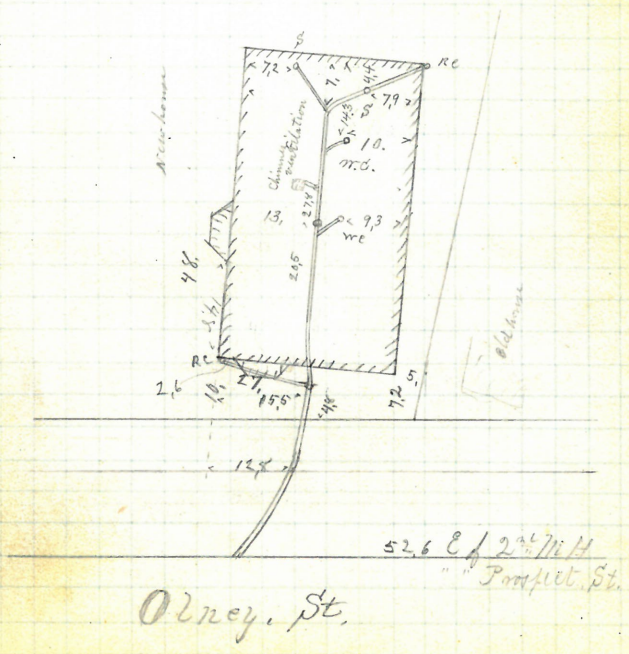
Mary A Bullock
84 Olney St.
James Gorman

D. 20-
Permit 2782

✓ Cut at curb 11.

Opened Apr 5 - 1880
Closed " 10 - 1880
Reopened May 12 - 1880
Closed " 13 - 1880
Reopened & Closed June 13 & 99
J. R. Daniels D. E.

Plotted



Park Capin & Wife

#201 + 63 Transit St.

David M. Barney

D.S.

Permit 2783

V. Cut at curb 8.1

Opened Apr 9 - 1880

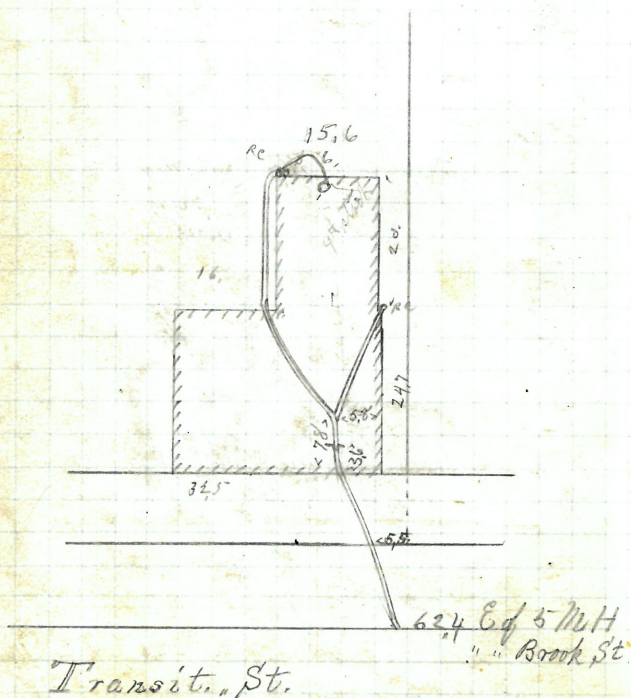
Closed " 13 - 1880

Reopened Apr. 24, 1927

Closed June 2, 1927

E. McKenny D.S.

Plotted



REMOVED

37.

Royal Mathewson & Wife
202 HighSt Cor Stewart St
Bernard Brady
D.L.

Permit 2797

✓ Cut at curb 86

Opened Apr 28-1880

Closed " 30-1880

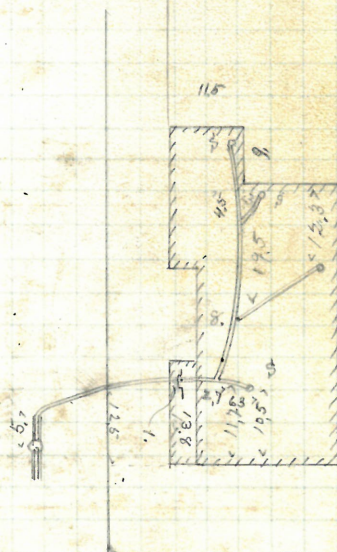
Reopened Jan 10-1903

Closed " 12-1903

M. S. Chadsey D. L.

Plotted

Stewart, St.



High. St.

Olive L. Tufts
 31 Gilmore St.
 Gaston, A. B. Blackmar

D. L.
 Permit 2786-

V

Out at curb 10.2

Opened Apr 10-1880

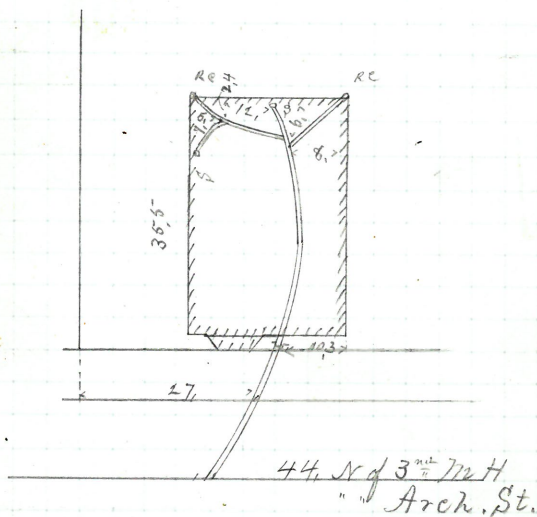
Closed " 13-1880

Reopened 6/21/55

Closed 6/21/55

M. Iscobbo - remove trap

Plotted



Gilmore St.

1198 Westminster St.

41.

Charles Dudley

High St.

Jason A Blackmar

Permit 2788-

✓ Cut at curb 10.2

Opened Apr 14-1880
Closed " 17-1881

17-1880

Reopened May 29, 94

Closed May 29th 94

Geo. H. Lewis D.D.

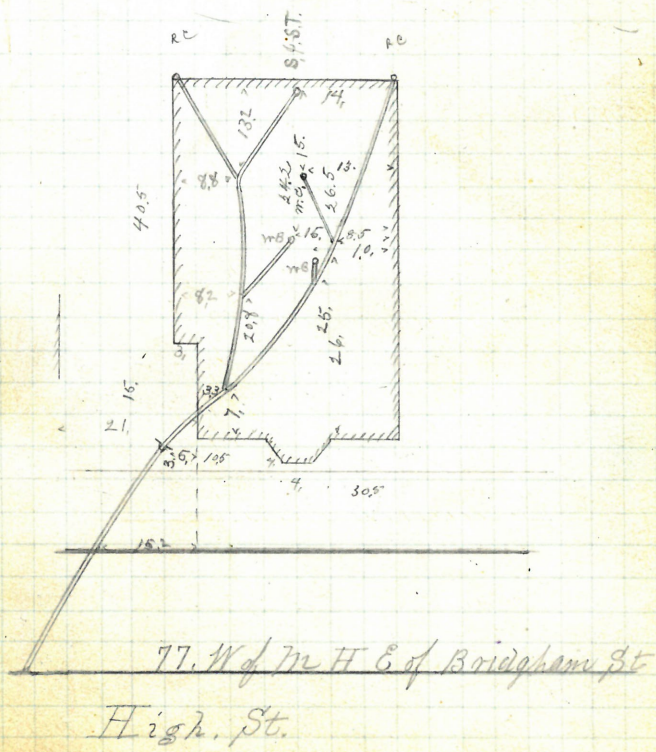
Rehomed - Dec 3, 1935

Proposed - Dec 3, 1935
Closed - Dec 3, 1935

Plotted

Closed - Dec 3, 1955
P. P. Walker - add above

Bridgman. St.



William C. Hall
424 High St.
Frank Read

D.L.
Permit 2789

✓ Cut at curb 7.9

Opened Apr 14-1880.

Closed " 15-1880

Reopened May 28-1886 by J.A. Blackman D.

Reopened Sept. 23, 98

Closed " 28 " 98

L. C. Stevenson S. D. 263

125

Plotted

Reopened May 24-1917

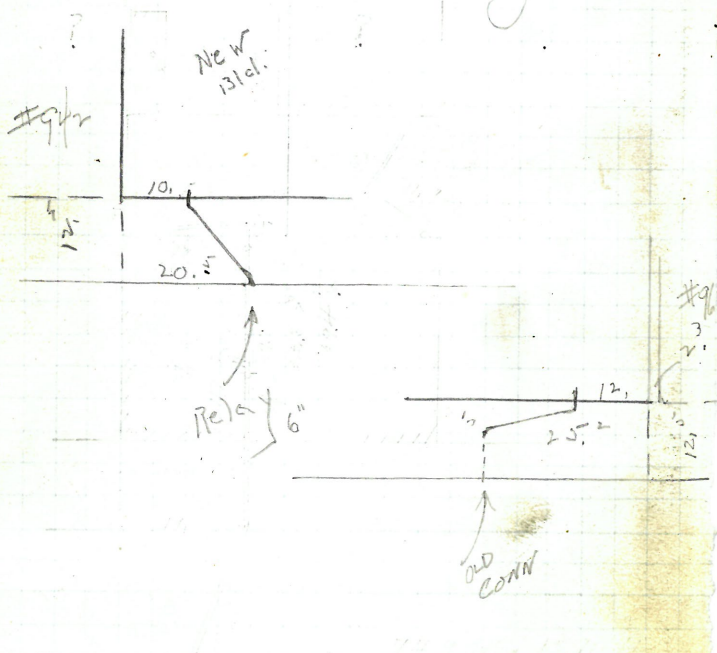
Closed " 26-1917

J. S. Wessinger S.D.

Reopened - Aug 27, 1921

Closed - Aug 27, 1928

Timney S.D.



H. 22.10

L. J. Jettis

Ferdinand Potter
John P. Smith Lessee
#32 7 Gilmore St.
Jason H Blackmar

D.L.
Permit 2791

Y Cut at curb 10.2

Opened Apr 19-1880

Closed " 24-1880

Reopened " 20-1888 by J.F. Read

Reopened July 17-1944

Closed " 17-1944

Reopened " 17-1944 Potted

A. Keyes D.L. all about -

Reopened Sept 7-1946

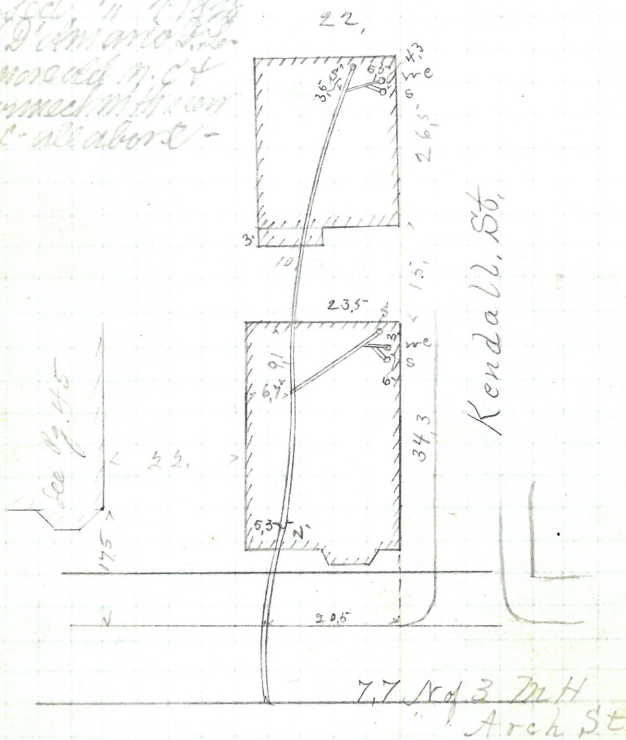
Closed " 7-1946

J.H. D'Amico Lessee

Reopened n.c. &

& connected with main

n.c. all about -



Gilmore St.

4-6 Edward Mc Cabe
 Anthony St.
 John Kiogh
 D.L.

Permit 2780

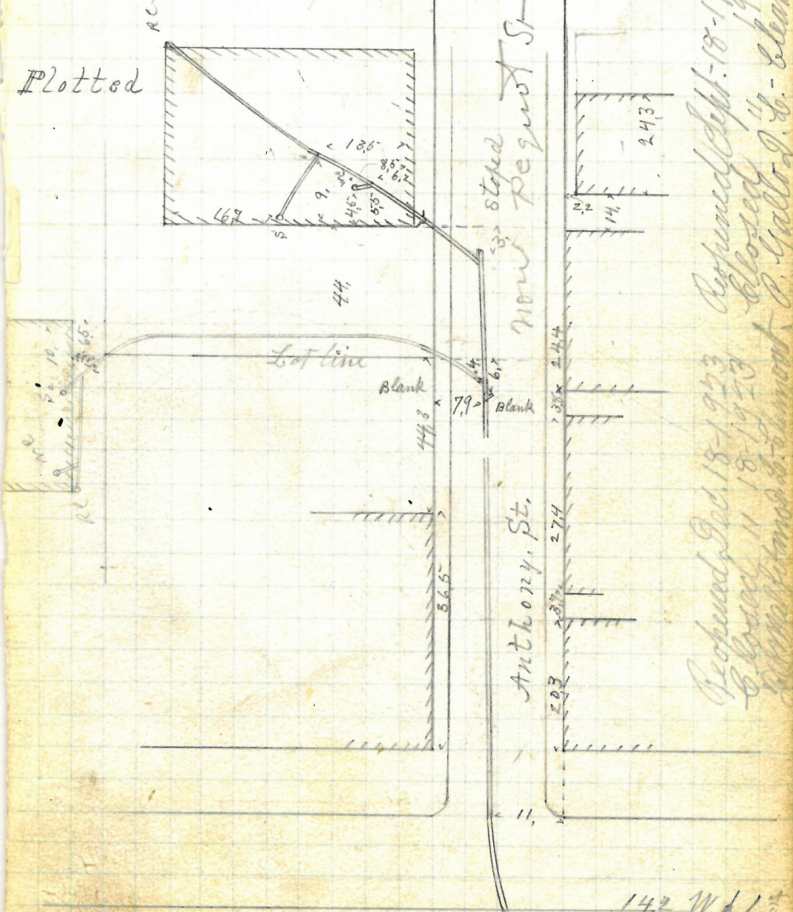
V Cut at curb 9.8

Opened April 21-1880

Closed " 24-1880

Reopened Sept 7-1884

Plotted



Proposed Fed. 18-1923 Reopened Sept. 18-1914
 Closed " 18-1923 Closed " 1914
 Reopened Sept. 7-1884
 C. Kiogh D.L. - Edward

Federal St.

14.2 W of 1st
 M H " "
 Newton St

REMOVED

Daniel Burrows
46 Summer St.
J. Frank Read
D.L.

Permit 2795

Y Cont at Lamb 10.8

Opened Apr 28-1880

Reopened May 27-12

Closed " 29-1880

Closed " 27-12

Reopened Sept 13-95

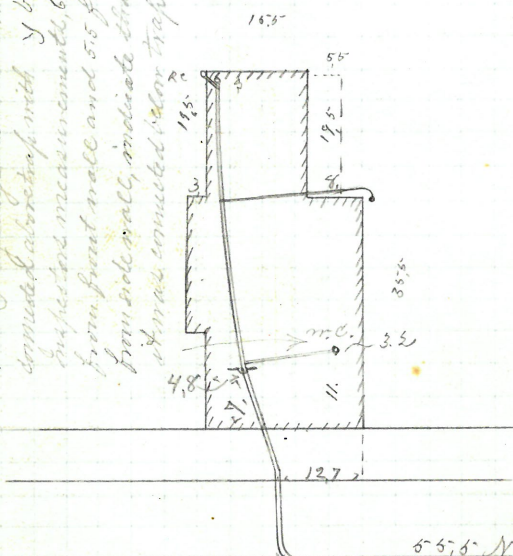
W.N. Chadsey D.L.

Closed Sept 13-95

E.P. Carey D.L.

Plotted

E.P. Carey says this m.c. was
connected above trap with Y but
suspect for measurements, 6 ft.
from front wall and 5.5 ft.
from side wall, indicate that
it was connected below trap



Summer St.

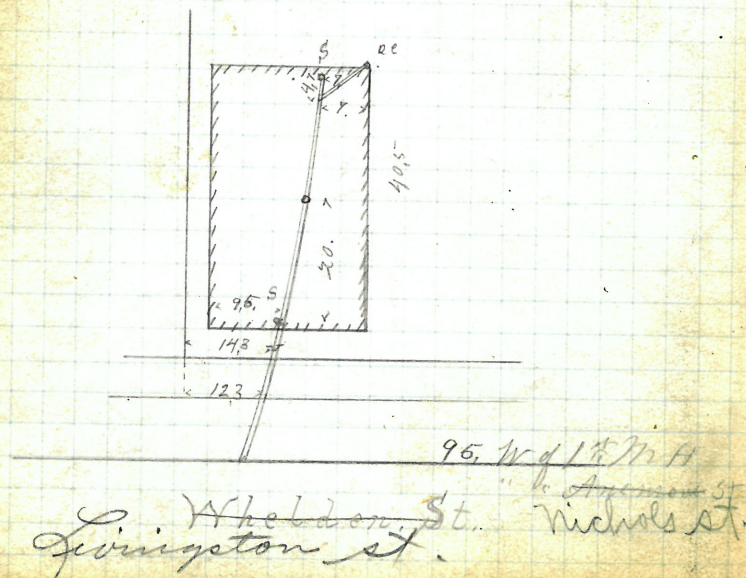
5.5 ft. N of 2 M.H.
at Broad St

Thomas Warner
23 Wheldon St.
Jason A Blackmar
D.L.

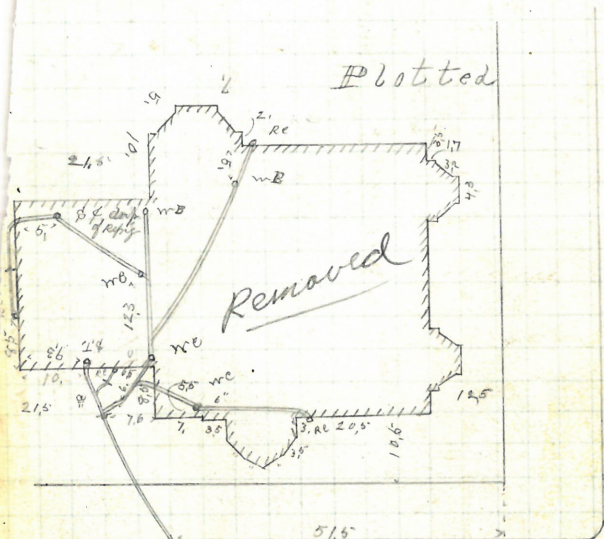
Permit 2796

Opened May 3 - 1880. ^{Cur at Court 9.} Reopened Feb. 13, 1900
Closed " 5 - 1880. Closed " 14 " "
Reopened Aug. 1900. D. Wendell Roots
Closed 1900
Geo. B. Phillips D.L. -

Plotted

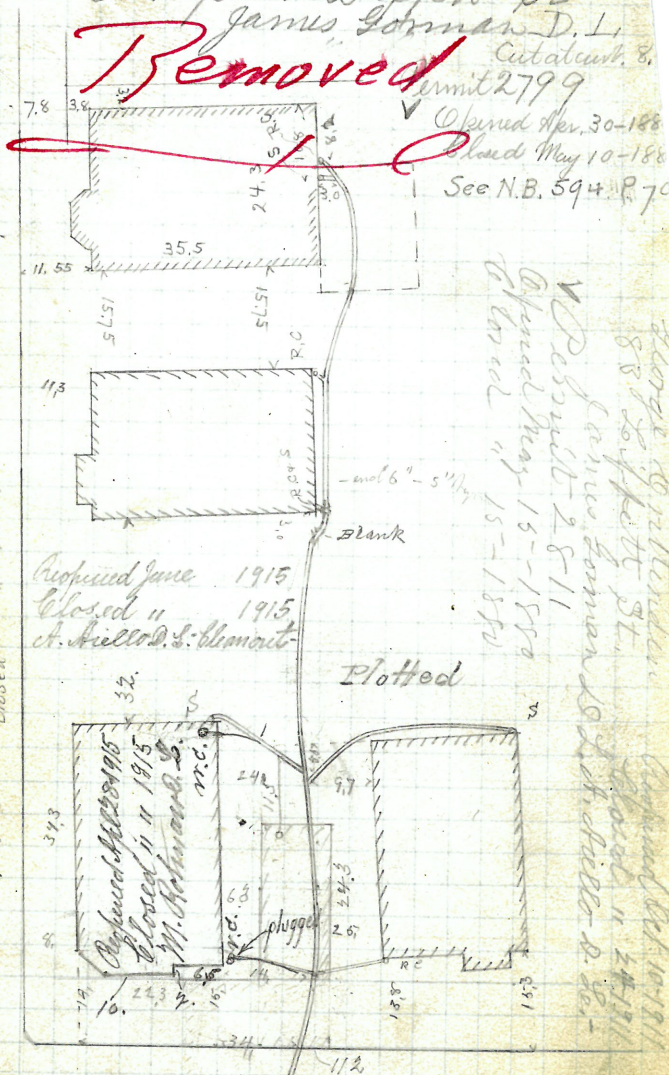


William H. Greene
 # 534, Broad St. or Stewart St.
 Nathan B Horton
 L L
 Permit 2798
 Y Cut at curb 5.
 Opened May 3-1880
 Closed " 8-1880



IP. 168 Per ? 1947 11
 1 clear P. mangrove S.

Amos M. Hawkins
 Camp cor Liffitt St
 James Gorman D. L.
 Removed
 Permit 2799
 Cut at curb 8.
 Opened Apr. 30-1888
 Closed May 10-1888
 See N.B. 594 P. 70



Proposed Apr. 23-1914
 By A. Mitchell & Co.
 10 - Clear built -

Opened - May 15-1880
 Closed " 15-1880

Proposed June 1915
 Closed " 1915
 A. Miller D. S. Gorman

Plotted

George B. Gorman
 88 Liffitt St.
 Service Gorman to Liffitt St.
 Plotted May 15-1880
 Closed " 15-1880

Liffitt St.
 Proposed Aug. 10, 1934
 Closed " 10, 1934
 J. Netzer - clear - plug R.C.

10 Proposed - Oct. 17, 1940

17 Closed - Oct. 18, 1940

M. Rossi - cl. Camp

Open sidewalk

St. Remun 13 1947 do 17 1947

Clear M. Rossi 7/2/47

John McCarron 53
 S E cor Hedley & Walling St
 John Keogh D.L.

Permit 2800

✓ but at curb 9.7

Opened May 3-1880

Closed May 4-1880

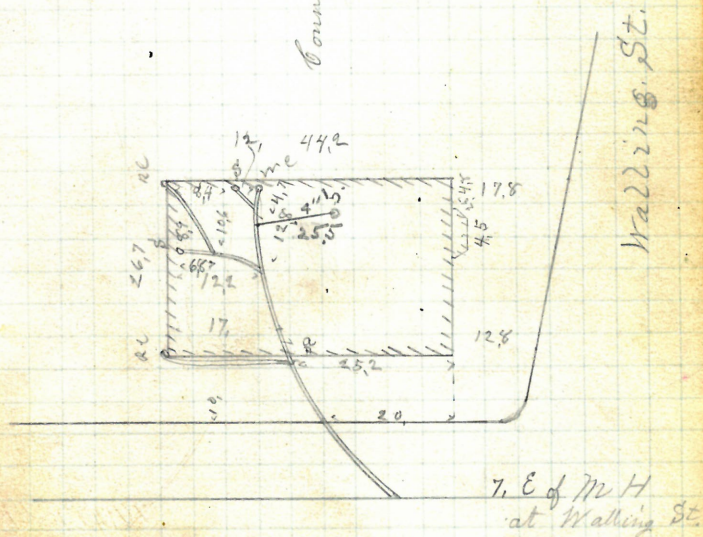
Proposed - Oct. 29, 1936

Closed - Oct. 29, 1936

M. Cullenmore - add 4" line

Connects at 22' with drain
 previously laid

Plotted



Hedley St.

~~Removed~~

43 Esther, A. S. Hooker
 22 Carpenter St.
 Bernard Brady
 D. L.

Permit 2801

V. Ent at Curb 9.8

Opened May 4-1880

Closed " 6-1880

Reopened Mch 6-1903 ~

Closed " 7-1903 ~

W. B. Thompson & Co. - Repair ~

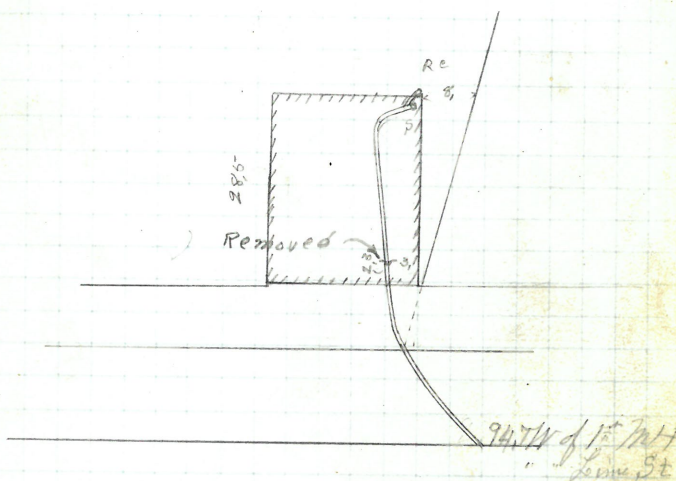
10 Reopened, Oct. 11, 1944

19 Closed - Oct. 13, 1944

A. Ambrosino - Clear

Removed trap

Plotted



Carpenter St.

GONE

55

May -
Wheeler M. Blanding
87-89 7575 Brook St. opp Pike.
Frank Road
D.L.

Permit 2,802

V

cut at curb 9.

Opened May 10-1880

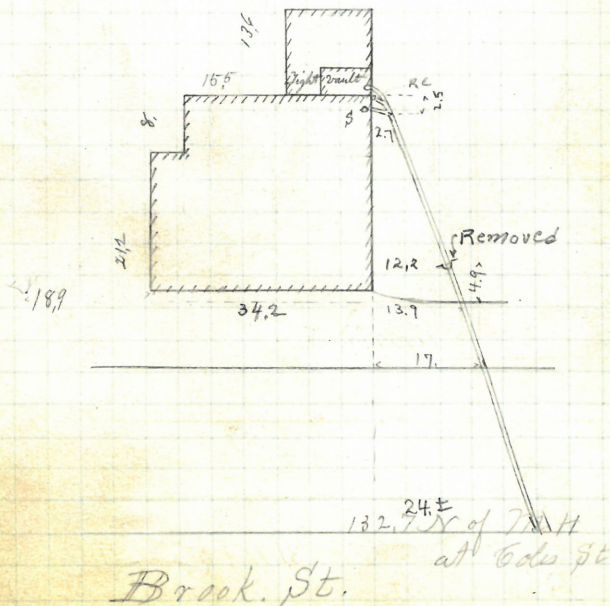
Closed " 13 1880

Reopened May 9, 1941

Closed - May 9, 1941

R. Tratta - cl. remove trap.

Plotted



GONE

Homer M. Daggett Jr.
113 Beacon St.
Timothy J. Sullivan
D. L.

Permit 2803

V Cut at curb 10.2

Opened May 5-1880

Closed " 7-1880

Reopened Dec. 19-1895 Cleanout

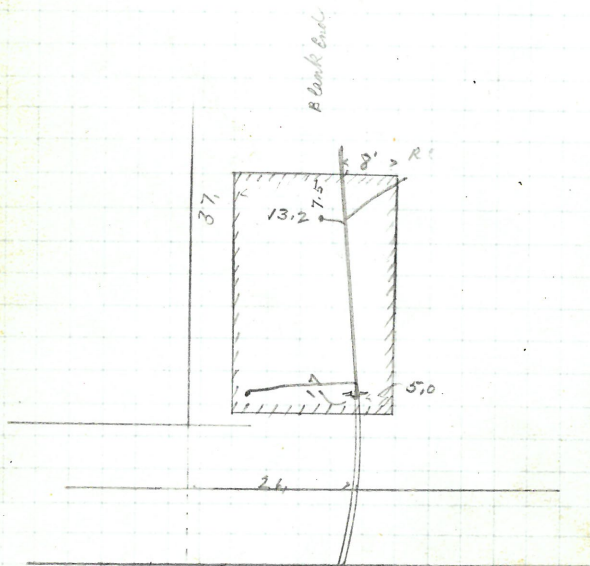
Closed " 21-1895 To M. Goldrick D. L.

Reopened Apr. 12-1912 Reopened Oct. 30-1914

By G. D. Lewis D. L. Closed Nov. 1-1924

Cleanout - M. Lyons D. L. - Cleanout

Plotted



Beacon St.

31 N of 5th M H

Lockwood St

Henry A Howland
17 Claverick St
Frank Holden

D.L.
Permit 2805

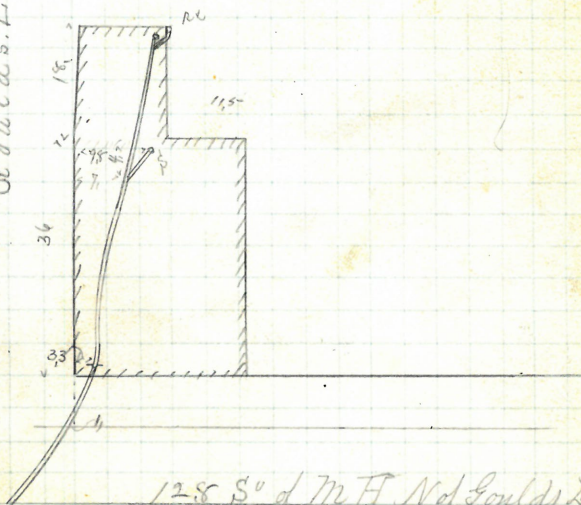
But at Cost 9,6

Opened May 7 - 1880

Closed 10 - 1880

Plotted

Goulds Lane.



Claverick St.

GONE

Stephen A Knight
16 Bridgman St.
Patrick Henry
D.L.

Permit 2806

✓ Cut at Curb 14.

Opened May 10-1880

Closed " 15-1880

Reopened Oct. 3-1931-

Closed " 3-1931-

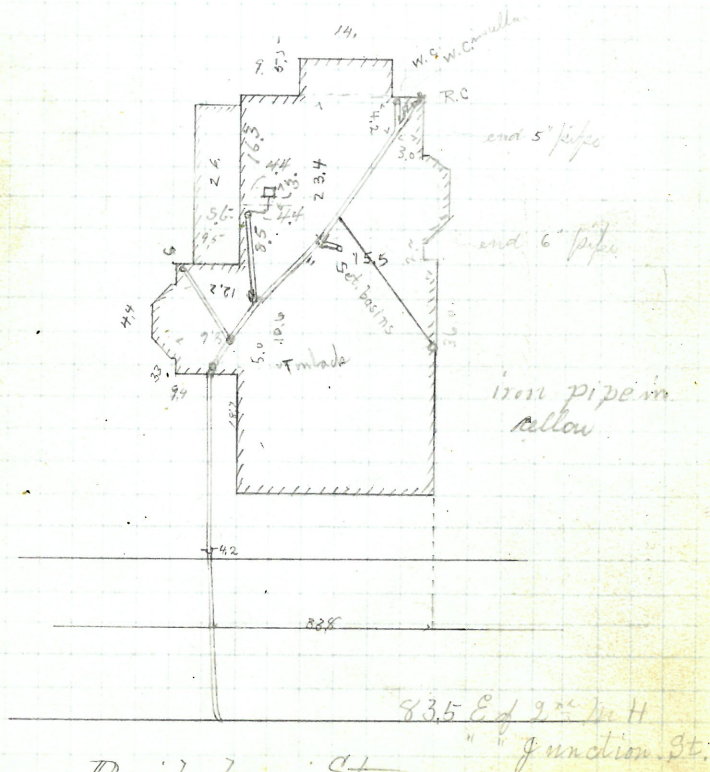
R.E. Appleton D.L.

Reopened June 11, 1928

Closed " 1928

L.B. Jenkins & L.

Plotted



John E. Barber -
 Heirs of Walter R Danforth
 67 Federal Cor Bradford St
 Timothy J Lulliver
 L.L. -

V₂ Cut at curb 10.8

Opened May 11-1880

C. Koser - " 14 1880

Reed " 26-1887 by J. F. Reed DZ.

" July 12-1888

Reopened Mch. 16th 98

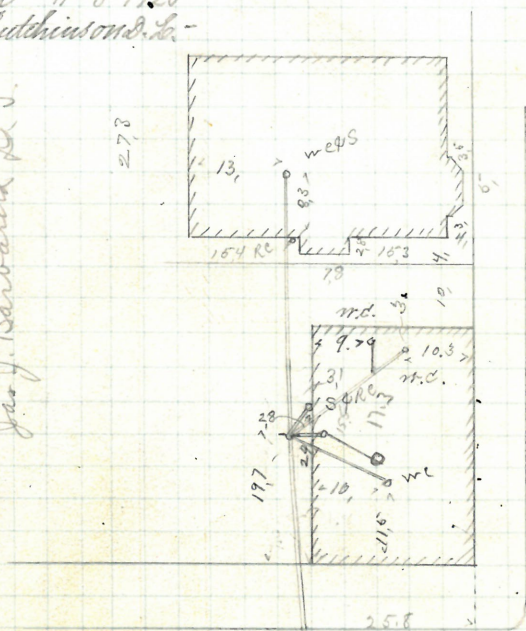
Closed " 17th 98 J. H. Daniels D. L.

Reopened Nov 5-1920- Plotted

Closed 11 8-1920-

H. Hutchinsons. D. L. -

Resigned June 6, 1927
 Clolea " 6, 1911
 Jas. J. Barbantia D. L.



Bradford St.

63.7 W of M H E of
Boardford

Federal St.

Rec June 8/47 5/49
 Clo June 14 1949
 add R.C. J. McMahon

W 47 61

Estate of Chen Simmons

19- Eddy - Co. Point - S.W. Corner
 Katha Norton D. L. H.

Permit No 2810
 V Cut at unit 6.9

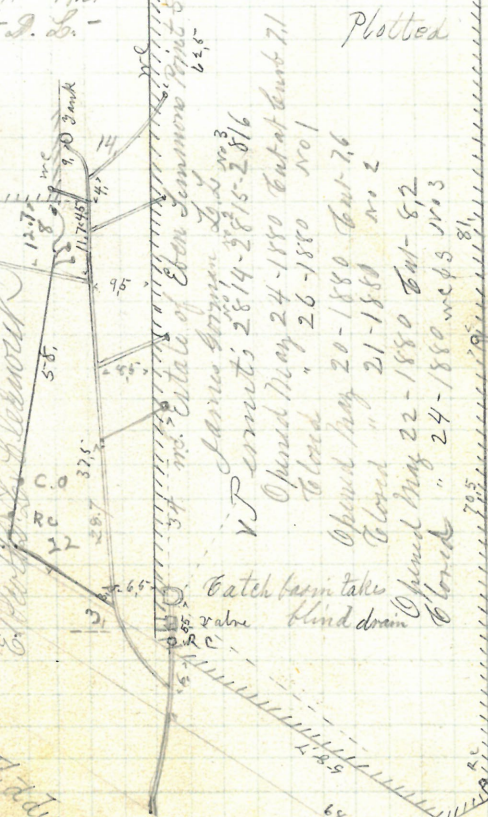
Opened May 14 - 1880
 Closed " 18 - 1880

Reopened 6/22/55
 Closed 9/22/55
 R. Trotta had gate valve

Reopened Sept. 1 - 1921
 Closed " 1921
 Scott - J. L. -

Plotted

Reopened March 16 - 1881 by N.B.
 Closed " 21 - 1881 Norton
 Reopened Nov 22 - 1881
 Closed Dec 10 - 1881 D.L.
 Reopened March 11 - 1921
 Closed " 1921
 Scott - J. L. -



V Permit's 2814-2815-2816
 Opened May 24 - 1880 Cut at unit 7.1
 Closed " 26 - 1880 No. 1
 Opened May 20 - 1880 Cut at 7.6
 Closed " 21 - 1880 No. 2
 Opened May 22 - 1880 Cut at 8.2
 Closed " 24 - 1880 No. 3

51.0

From cut line 9.6

27.0

Point St.
 68.0

Eddy

Reopened 7/5/55
 Closed 7/5/55
 R. Trotta - 4" IRON

5.0 5.5 6.0 6.5 7.0 7.5 8.0 8.5 9.0 9.5 10.0 10.5 11.0 11.5 12.0 12.5 13.0 13.5 14.0 14.5 15.0 15.5 16.0 16.5 17.0 17.5 18.0 18.5 19.0 19.5 20.0 20.5 21.0 21.5 22.0 22.5 23.0 23.5 24.0 24.5 25.0 25.5 26.0 26.5 27.0 27.5 28.0 28.5 29.0 29.5 30.0 30.5 31.0 31.5 32.0 32.5 33.0 33.5 34.0 34.5 35.0 35.5 36.0 36.5 37.0 37.5 38.0 38.5 39.0 39.5 40.0 40.5 41.0 41.5 42.0 42.5 43.0 43.5 44.0 44.5 45.0 45.5 46.0 46.5 47.0 47.5 48.0 48.5 49.0 49.5 50.0 50.5 51.0 51.5 52.0 52.5 53.0 53.5 54.0 54.5 55.0 55.5 56.0 56.5 57.0 57.5 58.0 58.5 59.0 59.5 60.0 60.5 61.0 61.5 62.0 62.5 63.0 63.5 64.0 64.5 65.0 65.5 66.0 66.5 67.0 67.5 68.0 68.5 69.0 69.5 70.0 70.5 71.0 71.5 72.0 72.5 73.0 73.5 74.0 74.5 75.0 75.5 76.0 76.5 77.0 77.5 78.0 78.5 79.0 79.5 80.0 80.5 81.0 81.5 82.0 82.5 83.0 83.5 84.0 84.5 85.0 85.5 86.0 86.5 87.0 87.5 88.0 88.5 89.0 89.5 90.0 90.5 91.0 91.5 92.0 92.5 93.0 93.5 94.0 94.5 95.0 95.5 96.0 96.5 97.0 97.5 98.0 98.5 99.0 99.5 100.0

Edwin D Allen
29 West Clifford St
Frank Road
D.L.

Permit 2807

V

Cut at Cost 10.9

Opened May 17-1880

Closed " 19-1880

Reopened June 20-94

Closed June 25-94

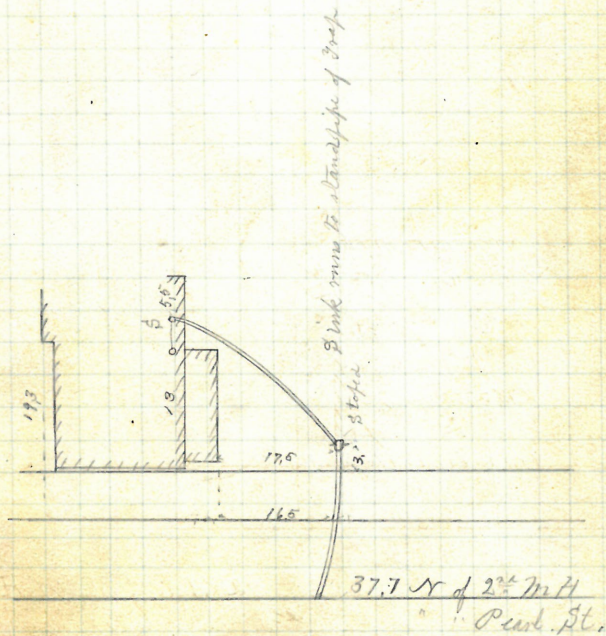
Cleanout

Reopened May 12, 1932

Closed

J. Higgins St.

Plotted

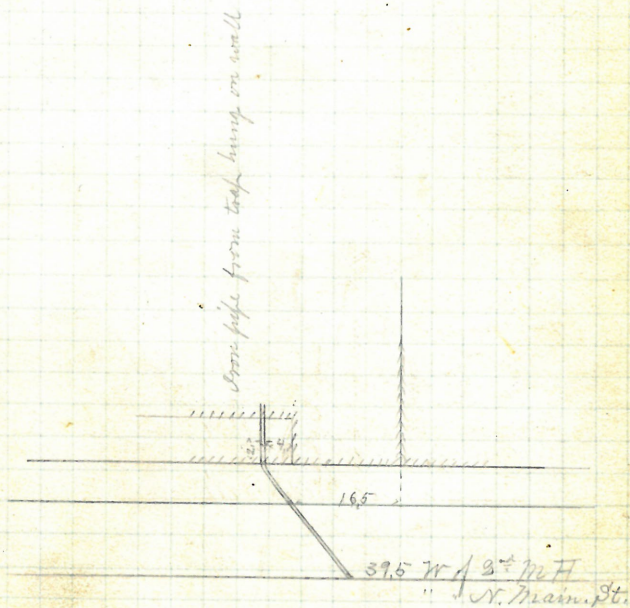


West Clifford St.

City of Providence
 Central Police Station
 Haymarket St.
 David W. Barney D.L.
 Permit 2818

Opened May 26-1880
 Closed " 26-1880

Plotted



Betty T. French
17-19 Waterman. St.
James Gorman

Permit 2819

Cut at curb 83

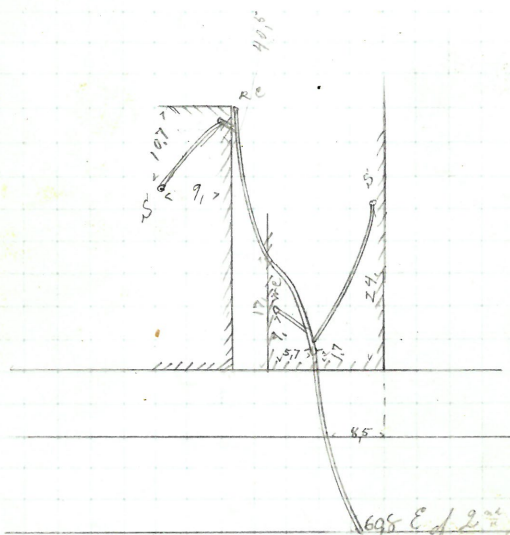
Opened May 31-1880

Closed June 4-1880

Reopened Aug 27-1884 by J. Phillips & Co

Abandoned

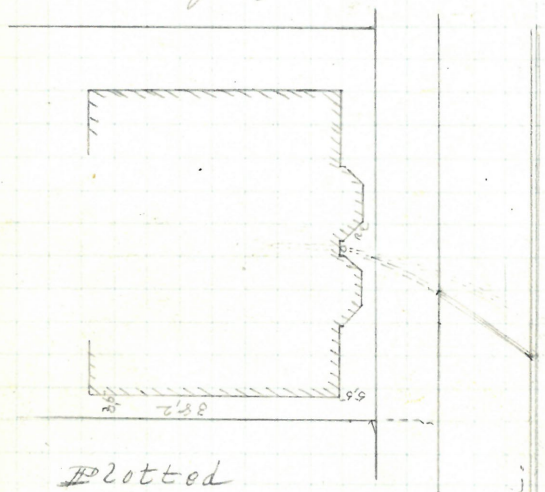
Plotted



Waterman. St.

or Main St.

Owen Mc Auliffe
Freemont St.
John Klogh D.L.
Permit 2820
✓ Cut at curb
Opened May 3 - 1880
Closed June 10 - 1880



Reopened Sept. 6, 1893.
Closed
To disconnect from
private drains to Dues
St. & reconnect with
new Freemont st sewer.
Chas. Newman, A.E.

Sewer.

Freemont St.

Enters sewer 28.8 W. of 3rd m.
W. of Dues st.

70^v**REMOVED**

John S. Trill
164 Pond St. New Haven 27-33

Jason A. Blackmar
D. L.

Permit 2821

Y Cut at Curb 10.5

Opened May 31-1880

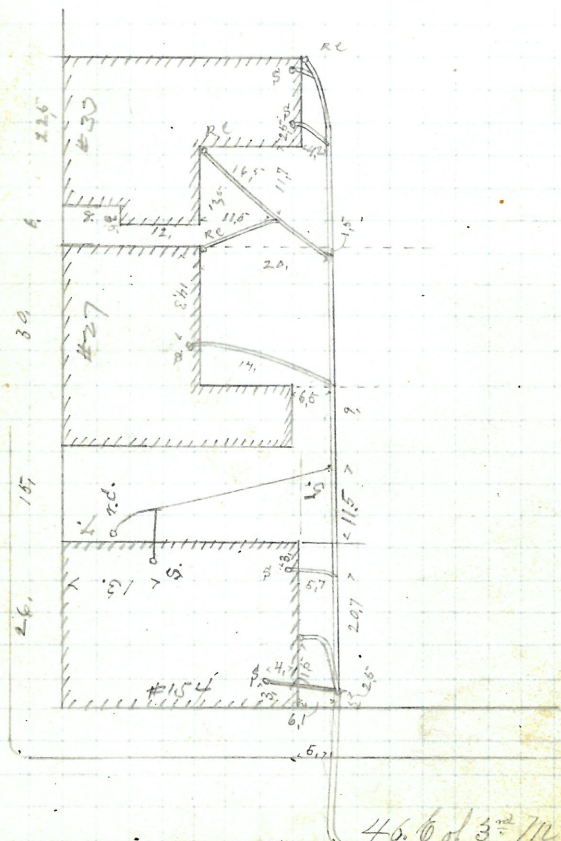
Closed June 5-1880

Reopened July 25-1910

Closed " 25-1910

J. Deary D. L. ~

Plotted



Pond St.

46.6 of 3rd M. H.

" " Pearl St.

Francis J. Collins
413-417 Pine St.
Jason A. Blackmar

D.L.
Permit 2824

Y Cut at Curb 9.8

Opened June 7-1880

Closed July 27-1880

Reopened Nov 16-1887 by B. Brady & found

Reopened Nov. 14-1913 - stopped with gate iron

Closed " 14-1913 pipe were put instead

W. Leonard & Co. Cleanout - by Wm B. Thompson Co.

Reopened Oct. 9-1923

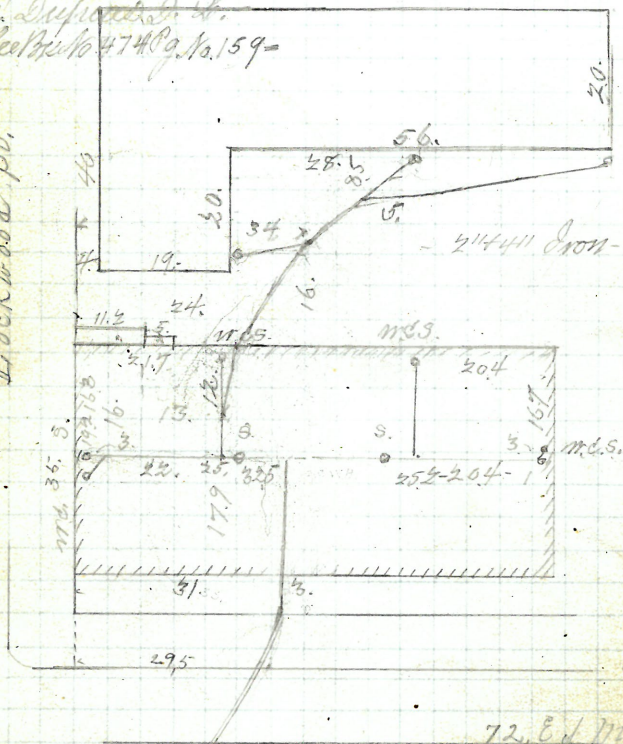
Closed Nov. 7-1923

D. Dupont & Co.

See No. 474 & No. 159-

Plotted

Lockwood St.



Reopened June 2-1925
Closed " 5-1925
Reopened " 20-1926
Closed " 20-1926
Reopened " 20-1926
Closed " 20-1926

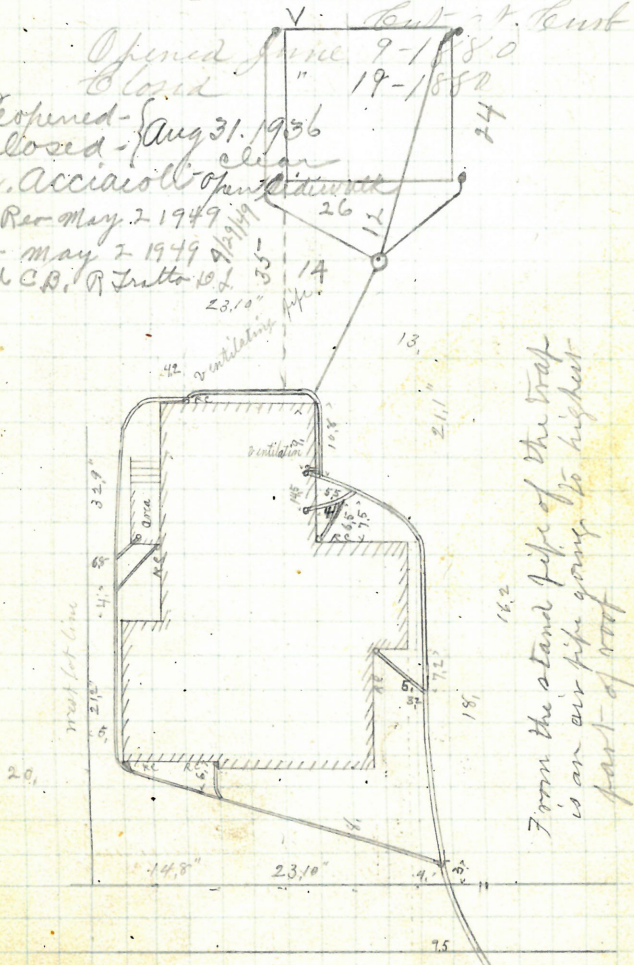
72, E. of M. H.
W. B. Lockwood & Co.

Pine St.

Oren Westcott
#38 #40 Keene St.
Jason A. Blackmar
D.L.
Permit 2822

Opened June 9-1880
Closed " 19-1880
Butt 8.8

Reopened - Aug 31, 1936
Closed - Aug 31, 1936
A. Acciaiooli clear
Reopened May 2, 1949
Closed May 2, 1949
R.D. A. Tuttle
23.10 = 35.1



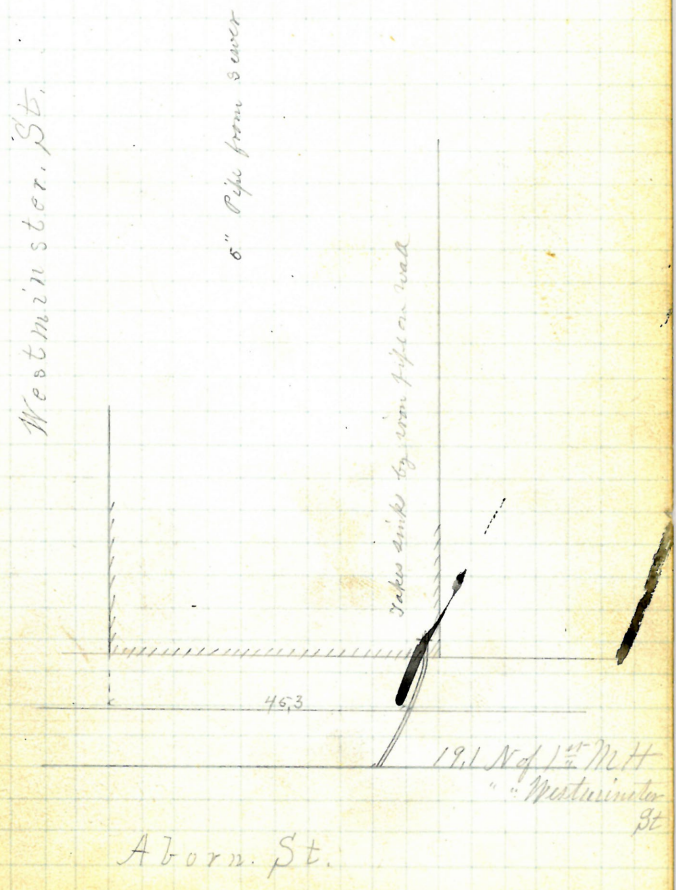
From the stand pipe of the trap
is an air pipe going to highest
part of roof

Keene St.

481 W 1st St
" Bottom St

J.B. Barnaby
 291-301 Westminster St. Near Aborn St
 J.F. Read D.L.
 Permit 2826
 Y Cut at curb 7.8
 Opened June 10-1880
 Closed " 10-1880

Plotted



Wid. of Philo S Perkins
 Friendship Cor Peck St.
 Timothy J Sullivan
 D.L.

Permit 2827

✓ Cut at curb 47

Opened June 11-1880

Closed " 12-1880

Reopened May 1-94

Closed May 1-94 } J. Holmes & Co. D.L.

Clearout Reopened Dec. 9-1905-

Reopened Sept 24-1902, Closed " 9-1905-

Closed " 25-1903, W.K. Chadsey, S. S. Chadsey

S. R. Blackman D.L. -

Reopened 1/2/53

Closed 1/12/53

C.F. Lees add

Friendship St.

5" from sewer

Plotted



57.5

85.7 N of M H

To Friendship St

Peck St.

Thomas F. Mc Hugh
13 Fremont St.

John Keogh D.L.
Permit 2828

✓ Cut at curb

Opened June 14-1880
Closed " 15-1880

Reopened Sept. 8-1893

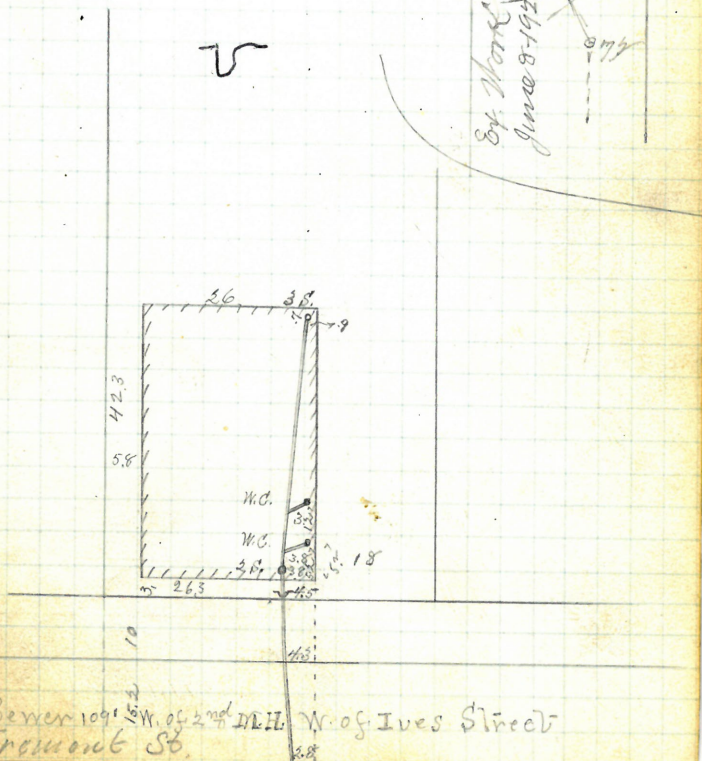
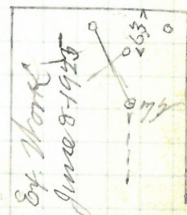
Closed Sept. 11-1893

Reopened June 8-1925

Closed 1925

A.W. Curmell D.L.

Plotted



Enter Sewer 10' W. of 2nd N.H. W. of Ives Street
Fremont St.

C. R. Blackman D. Sc.

Blackstone, St.

GONE

Mary Callough

9. Orms St.

John Keogh D.L.

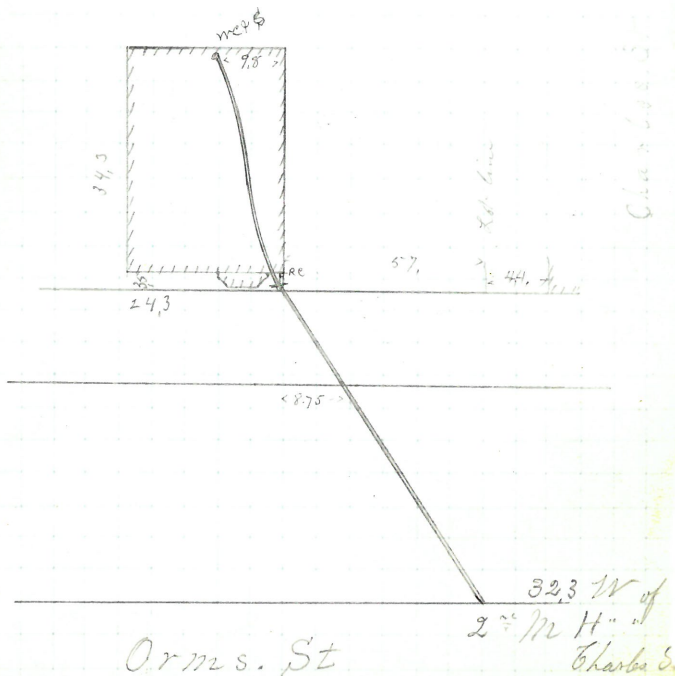
Permit - 2831

V Cut at East 8.9

Opened Jan 23 - 1880

Closed " 26 - 1880

Plotted



Large Arm Coats
 #55-31 Pitman, St.
 James German

H. L.
 Permit 2833

✓ Cut at Cut 8.2

Opened June 29-1880

Closed July 1-1880

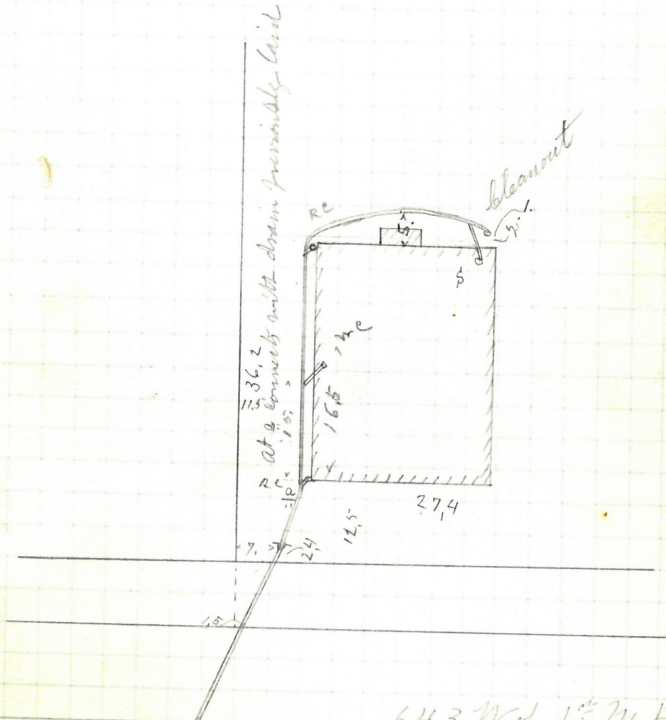
Reopened Aug 31.99

Closed " 5.11.99

Geo. R. Phillips & Co.

Relay ~

Plotted



64.3 W of 1st M. H.
 " " Gars. St.

Pitman, St

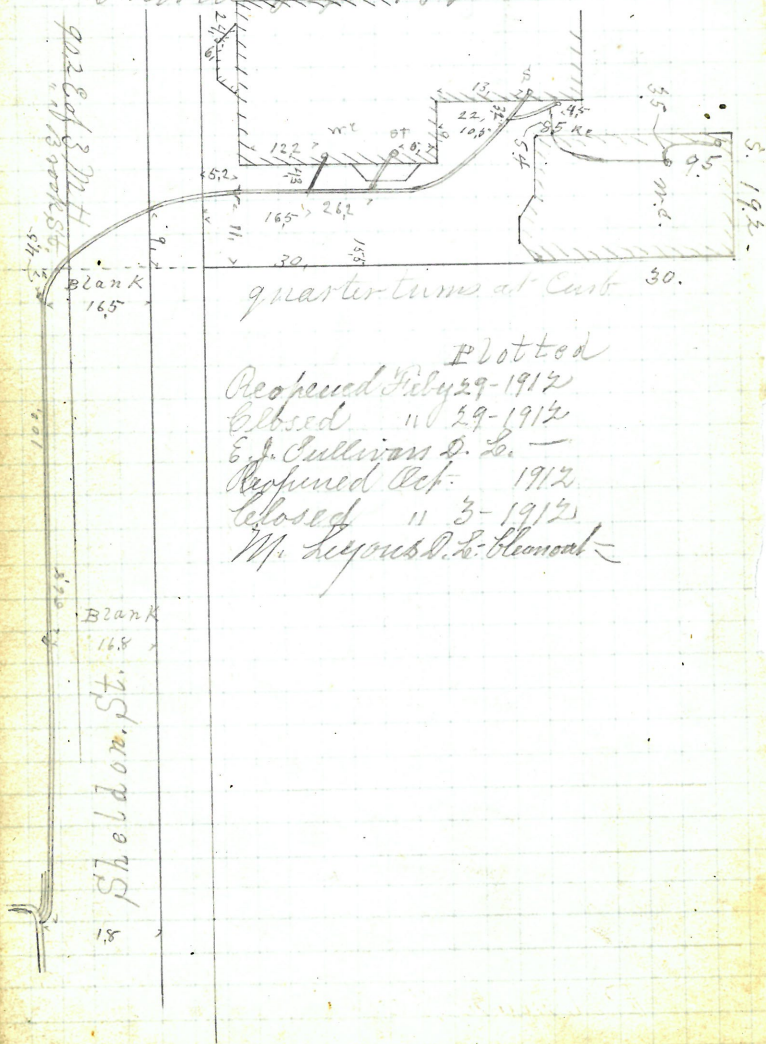
Joseph G Mathews
75 Sheldon St
Thomas B Rops

D.L. Permit 2832

V but at curb 5,6

Opened June 29 1880

C. Rops July 8-1881



Plotted

Opened July 29-1912

Closed 11 29-1912

E. J. Sullivan D. L.

Opened Oct. 1912

Closed 11 3-1912

W. Leonard D. L. Bloomer

H. 163
16

83

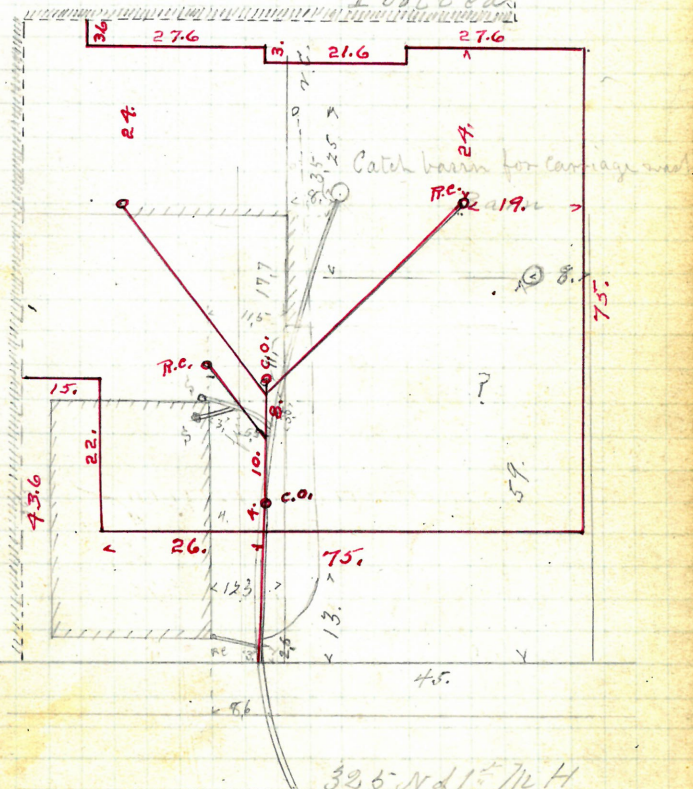
Abbey F. Pearce
178 Richmond St
John W Briggs

Permit 2834

✓ Cut at curb 9.5

Opened June 30-1880 Reo. 3/24/66 Clos. 3/25/66
Closed July 16-1880 D.L.A. Olean (New Bldg.)
Reopened March 13-1919-
Closed " 15-1919-
McGowen & Co. -

Plotted



P. 163
13 Removal

154 Broadway

George R Phillips, D.D.

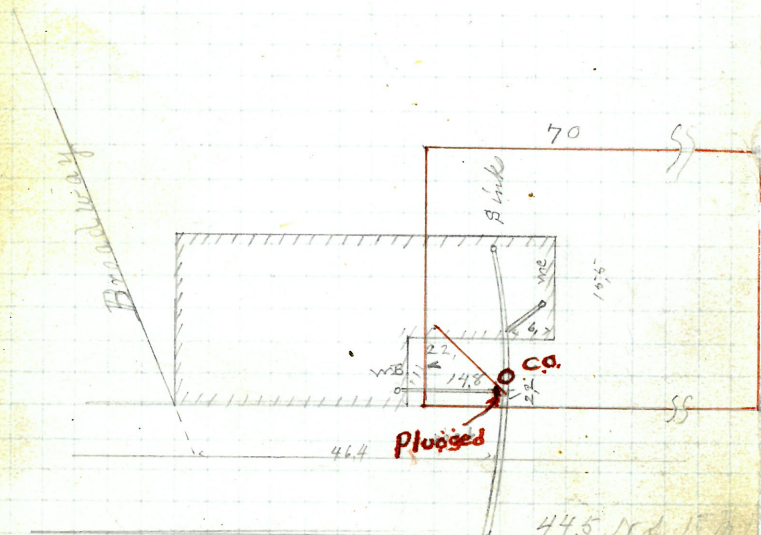
Permit 2836-

V Out at Knot 7.8

Opened July 9 - 1850

Closed " 10-1888

Plotted



Bourne, St.

P. - $\frac{157}{6}$

L.L.
Permit 2887.

Permit 2887

✓ Tent at Camp 11.

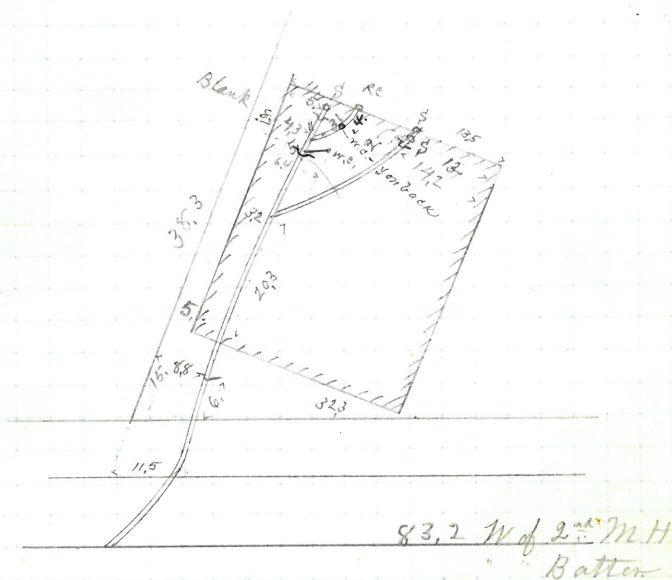
Opened July 12-1880
Closed " 16-1880

Cl. 16 - 1880

Reopened Mch " 1893.

Closed mch. 27th 1893 } Geo. H. Lewis, D. L.

Plotted



Carpenter, St.

Richard Davis
19 Creighton St.
Timothy J. Sullivan

D. L.
Permit 2838

V

Ant. at Ant. 8.6

Opened July 19-1889

Closed " 22-1889

Reopened July 7-98 - J. H. Duggan D. L.

Closed " 11-98 - Cleabout

Reopened Jan 9-1905

Closed " 19-1905

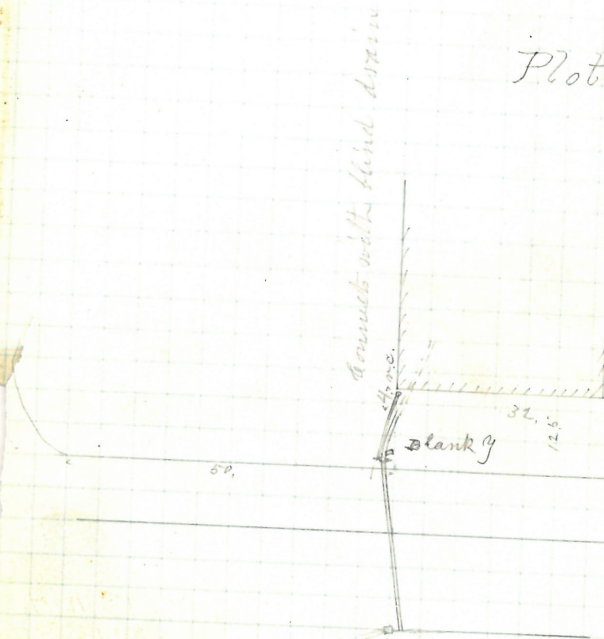
C. P. Brennan D. L. - Cleabout

Reopened Jan 21-1905

Closed " 31-1905

J. Deary D. L. - Cleabout

Plotted



Creighton St.

E. Melbert B. Billings
 168-178 Westminster, Geo 9-13 Union
 George F. Lewis

D. L.
 Permit 2784

✓ Cut at East

Opened July 19-1880

Closed " 20-1880

Reopened Oct-17-97 to Relay - L. A. Chadney S. S.

Middle St. 895



89.

468 Benefit cor Pike St.
John Keogh

John Keogh

Permit 2889

Permit 2889

Cent at Cent 5, 6

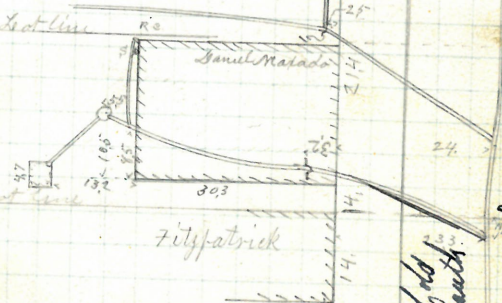
Opened July 20 - 1880

Clond " 28-1880

Received Dec 11 - 1893

Closed Dec 12 - 1893

Daniel D L. Cleaver



Plotted

Reopened Dec. 13-1917

Closed 11-13-1917

H. Matzner S. L.

citypatrick

m.d.

Revised Sept 7. 1929

Collected 10. 1929

N. Radford, D. I. Chan

South Main St

40. 8 of M H at W line of 40 main S.

Centers nearer 60.5 East of old
14.17 m. West side of Leavitt.
24 m. S.

Prop-8 Cor. Mar. 30 or 31/30

Remained Mar 30/30

Edred " 2.1/0

128 Julia, J. H. Barston
High St
Jason A. Blackmer

Permit 2840

V Cut at cut 8.5

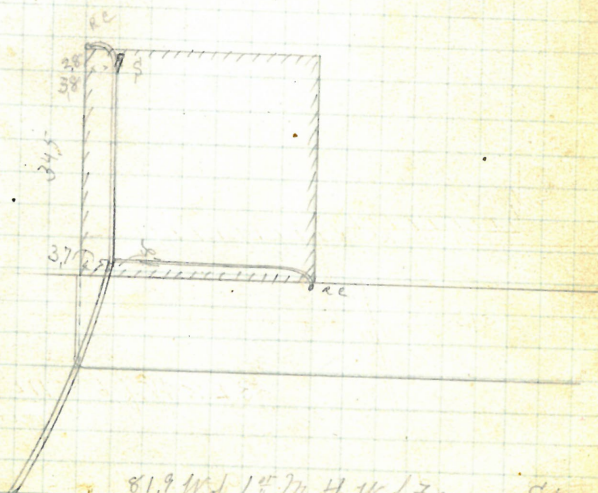
Opened July 21-1880

closed " 24-1881

Oct - 25-1882

" - 25-1882

Plotted



Thomas. P. J. Gaddard
35 Brown St George St
John. Klogh
D. L.

Permit 2841

Y Cent at Aust. 8.

Opened July 22 - 1880

Closed " 26 - 1880

Reopened Mar 10 - 1886 by T. Phillips & Co.

Reopened Oct. 9 - 1895

Closed " 12 - 1895

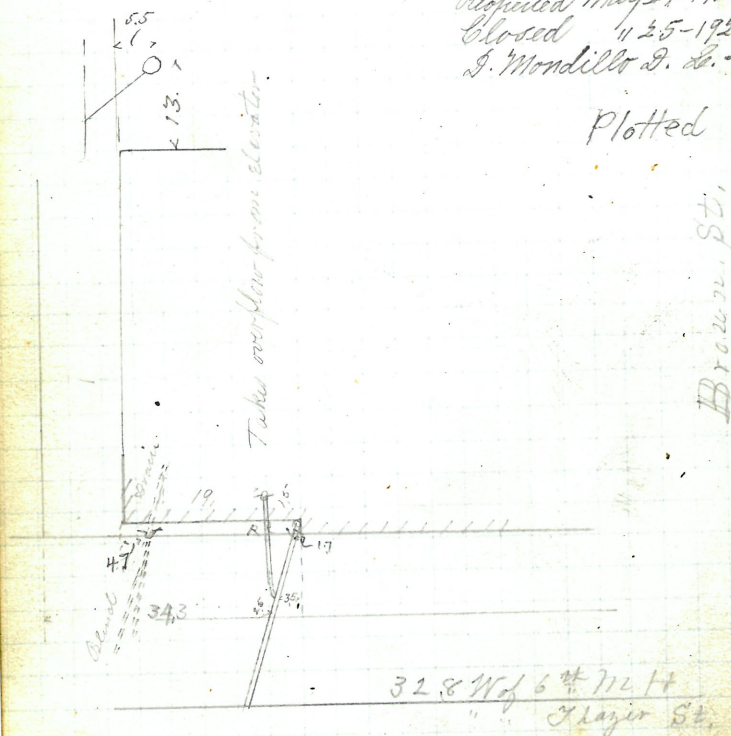
Hot Phillips D. L.

Reopened May 24 - 1920

Closed " 25 - 1920

J. Mondillo D. L.

Plotted



George St.

93

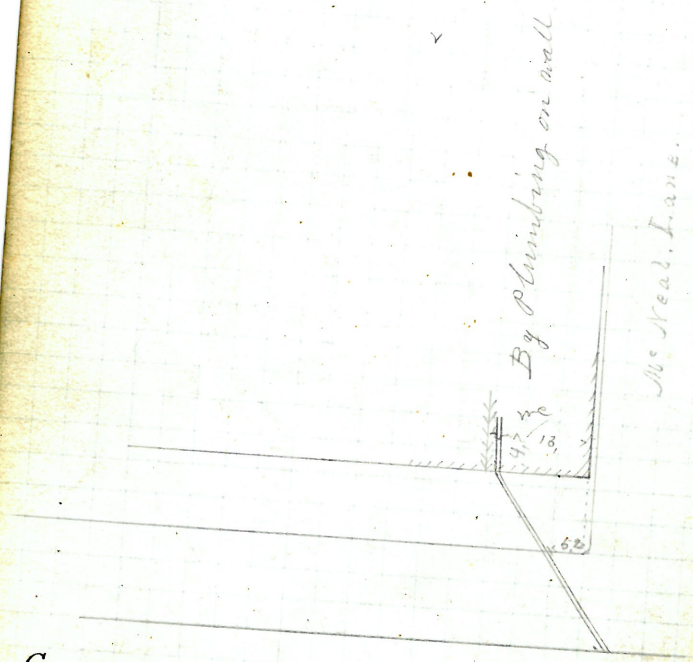
#72 Westminster St New York
Mc Neal Corporation
J Frank Read

Permit 2844

Opened July 26 - 1880
Closed " 28 - 1880

Proposed June 25/28
Closed June 25/28
J.L. Kendrick D.L.
Disconnect & Connect

Plotted



Enters sewer 73.2 sket of 2nd manhole at
Exchange St.

73-77 ² Zachariah Allen
 Westminster St W. cor. the Neal Lane
 J. Frank Reed

Permit D.L. - 2849

✓ Cut at curb 7.2

Opened July 31 - 1880

Closed " 31 - 1880

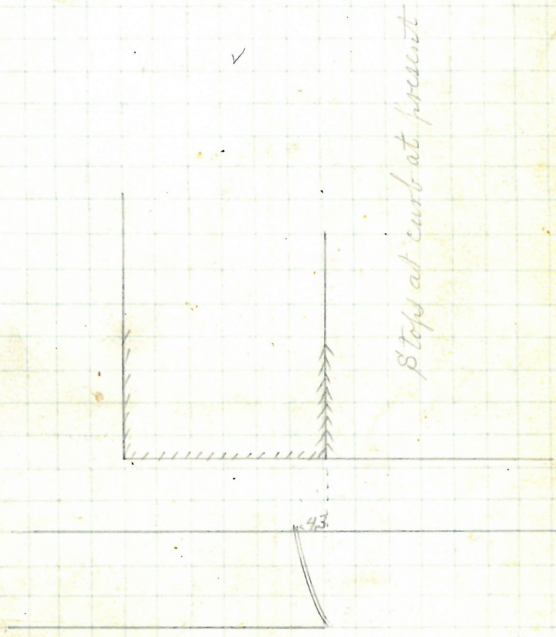
Reopened June 25/8

Reopened June 25/28

W. Kendrick D.R.

Rec. + Construct -

Plotted



Enters sewer 31.8 West of 2nd manhole at
 Exchange St

Caleb J. Burrows
High Cor Dean St.
John W. Briggs
D. L.

Permit 2845-

✓ Cut at Curt 711

Opened July 27-1880

Closed Aug 12-1880

Reopened March 2-1881

Closed " 4-1881

Reopened Sept. 1-1903

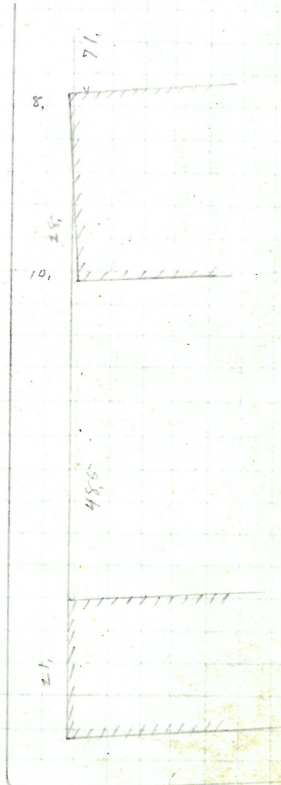
Closed " 3-1903

J. Deary D. L.

Plotted

Dean St.

354 So of Mt. H. N. M. of Washington St.
Entered end of street



Washington St.

Dec. 18-1902

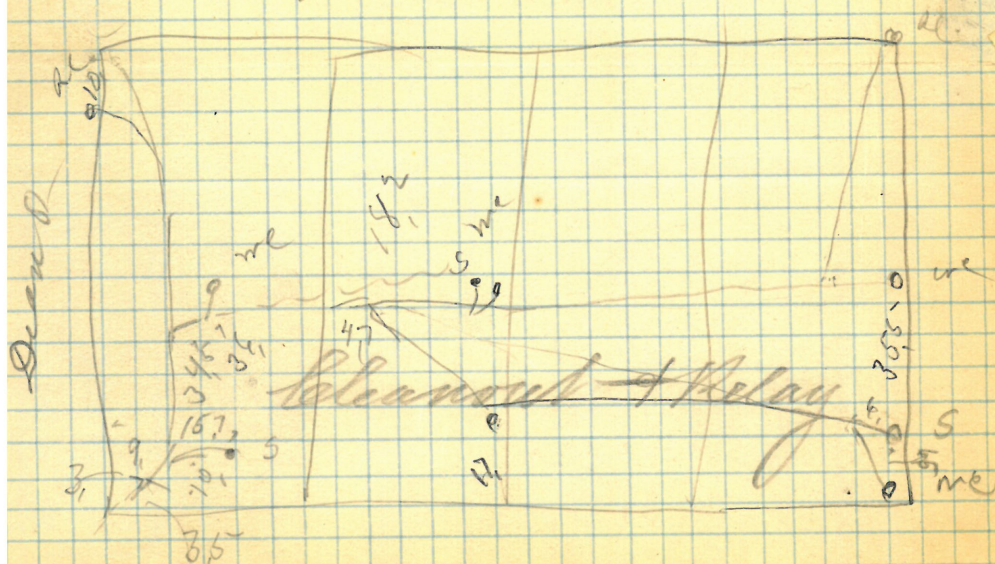
735 Westminster Street

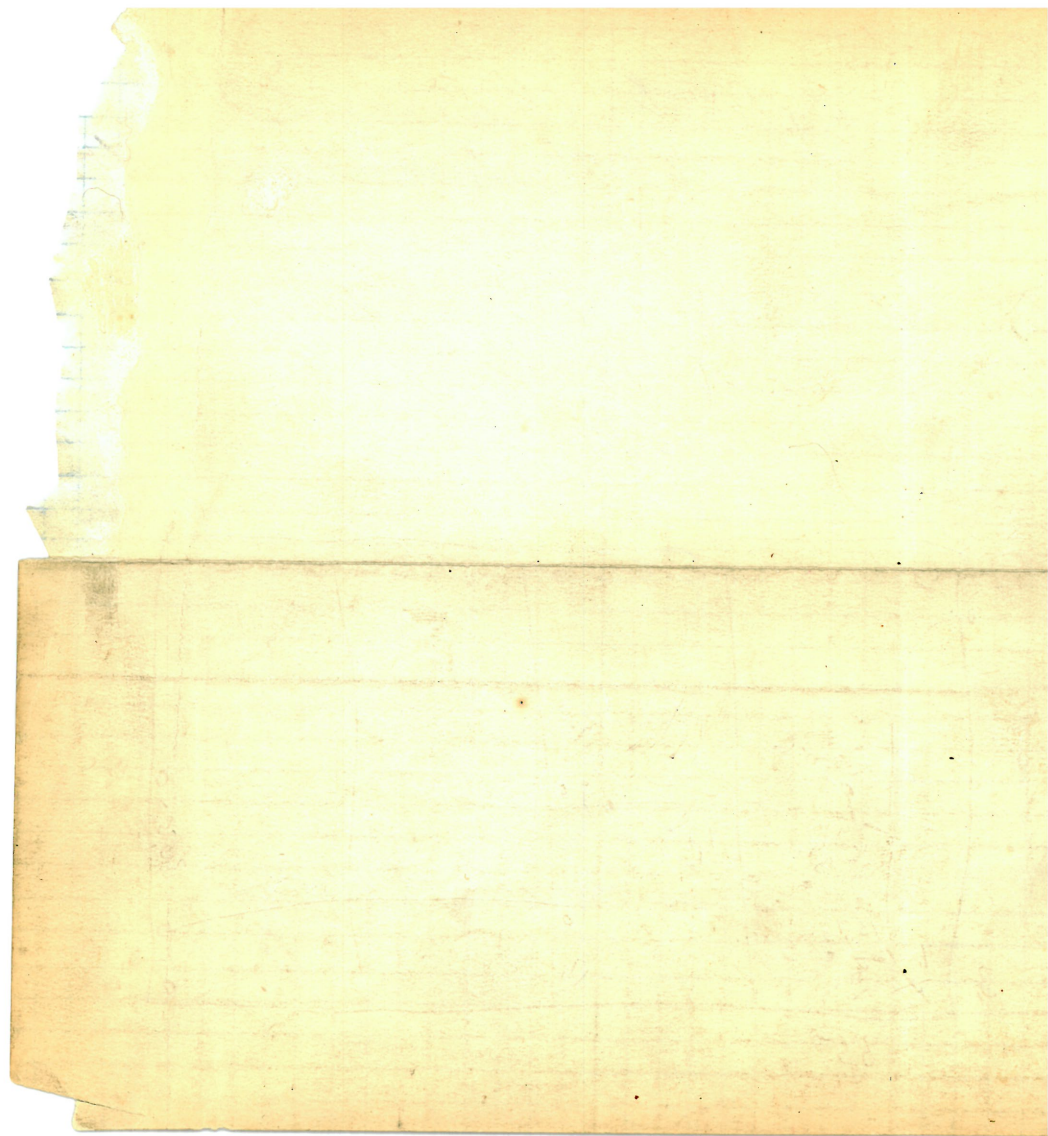
Corner Dean Street

Opened Dec. 19-1902 J. Leary & Co.

Closed Dec. 29 - 1905

Book 183 Pg 96-97-





P162-4

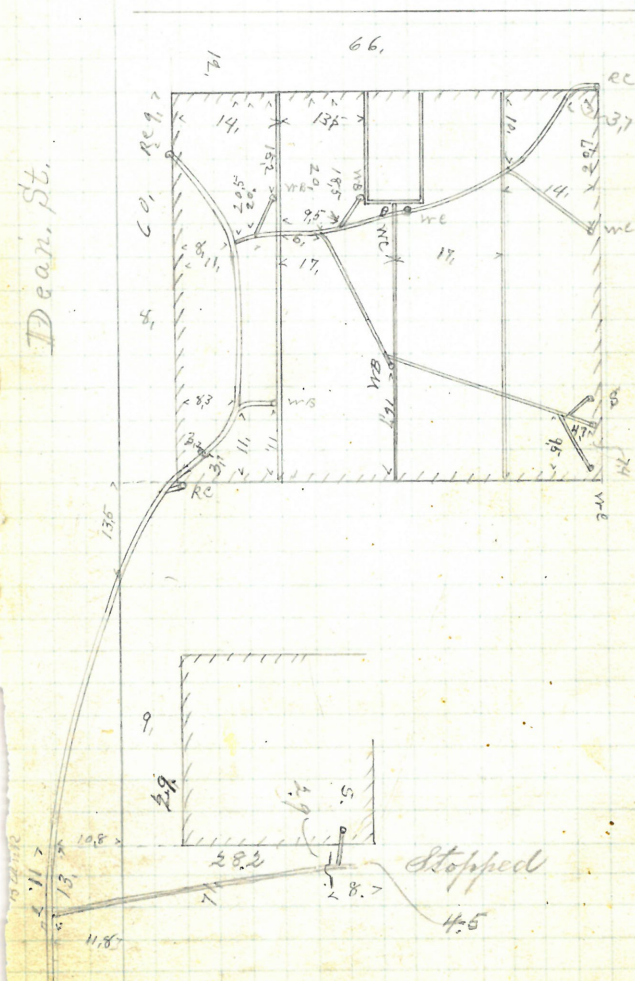
Reopened Dec. 19-1902

Closed " 29-1902

J. Deary D. L.

High St.

Dear, St.



Waldron Wightman & Co.
17 - 21 Pine, St.
of Frank Read

20 L -
Permit 2850

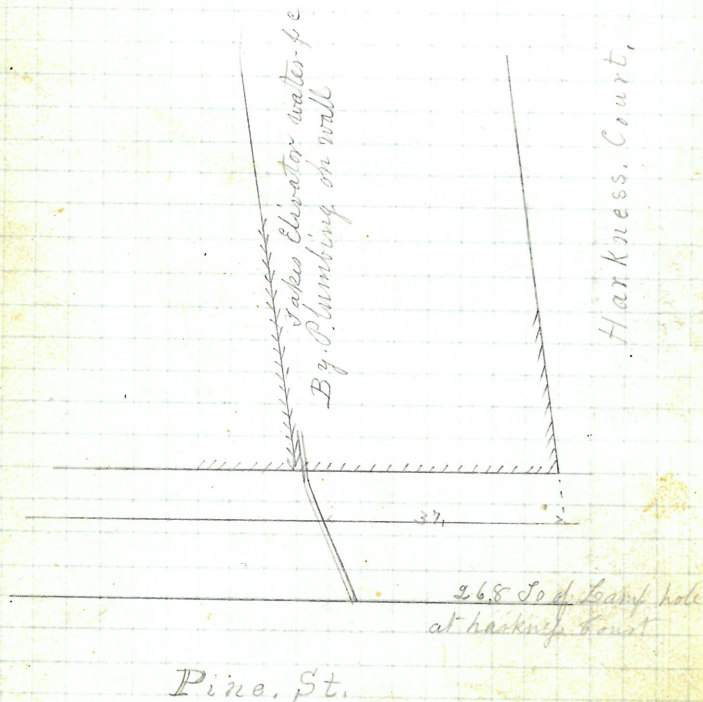
Opened July 29 - 1880
Closed " 29 - 1880

Reopened 10/3/55

Closed 10/3/55

D.L. P. Mangione Built C.B. see Insp. return.

Plotted



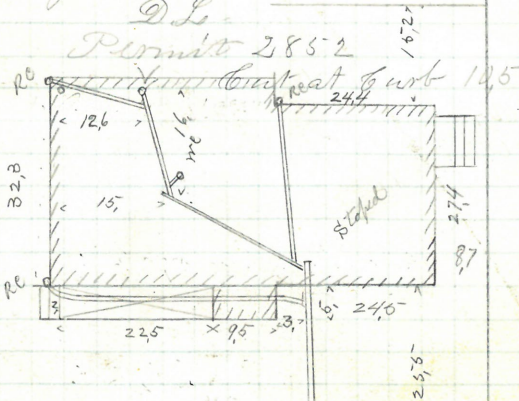
Opened Aug 10 - 1880
 Closed Dec 12 - 1880
 Reopened Dec 6 - 1887
 Apr 9 1888

101

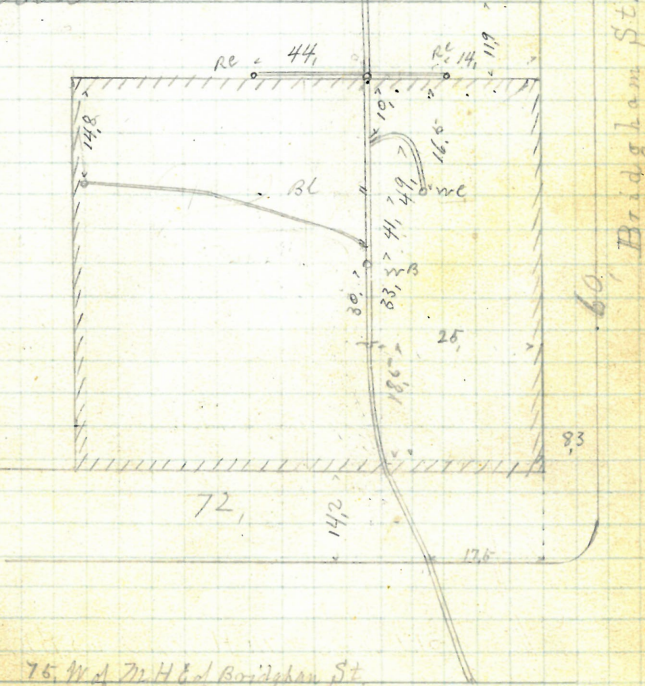
1193-1201

Henry V. Grant
 631 High St.
 J. Frank Read
 D.L.

Permit 285-2



Plotted



75 W of Dr H & C of Bridgman St.

High St.

GONE

#13-15

GONE
#13-15 Joanna D. Welch
749 Trenton St.
John Kioch -

~~74~~ 9 Trenton St.

John Keogh

Q. L.

Permit 2853

 γ

Cent. at Curb 10.

Aug 13 - 1880 Opened

Per Aug 6 1946 7/31/46
Clo Aug 6 1946

Aug 14 - 1880.

Closed. Ch Aug 6 1946 134/46

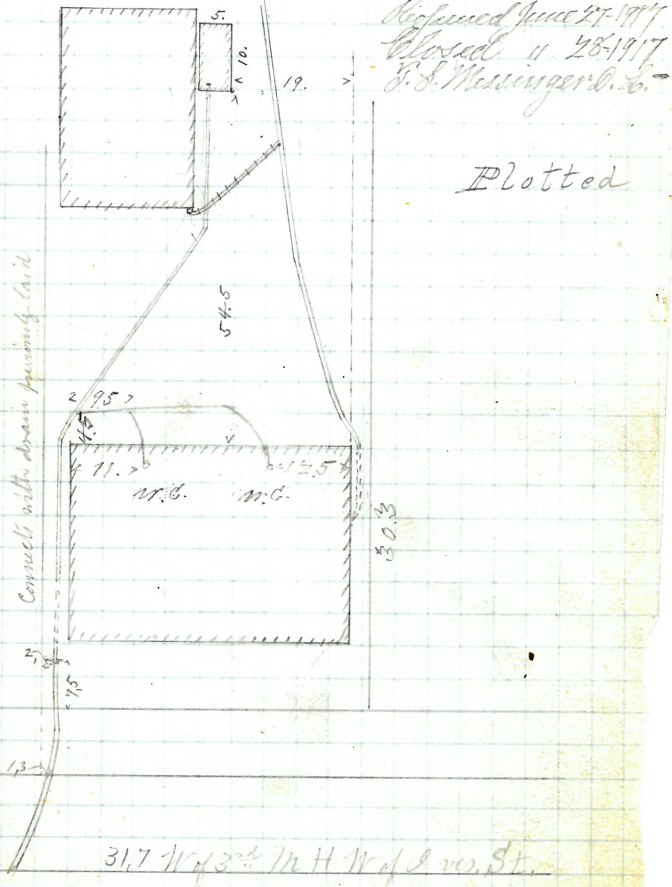
Reopened Nov. 18th 96

Clear Repair Handle 46.5.

Gloucester Nov. 19th 96

H. M^cKeon D. L.

Received June 27-1887



31.7 W of 3rd M H W of Ave. St

Trenton St.

GONE

#510

Janna D. Walch
360 Wickenden
John Kogh
D. L.

Permit 2-854

V Cut at curb 7.8

Opened Aug. 16-1880
Closed " 24-1880

19



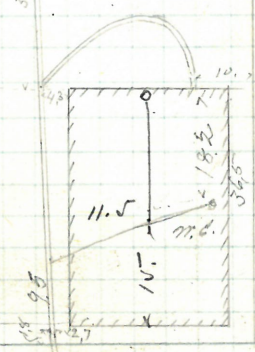
Reopened Jan. 27-1887
Closed " 29-1887
J. S. Mullinger & Co.

Plotted



Reopened - Feb. 19, 1942
Closed - " 20, 1942
A. Cousins add
3WC 4" I.

41



44.1 W of 3rd N. H. of 2nd St.

Wickenden St.

New England Butt Co
 Pearl Cor Perkins St.
 J. Frank Read

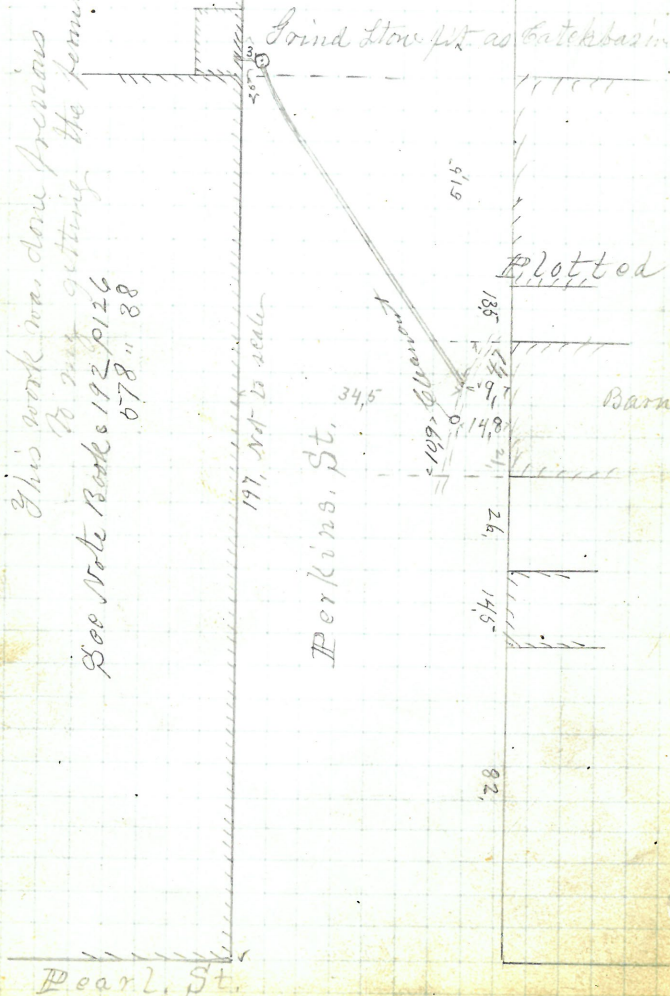
D.L.
 Permit 285-6

V Cent at Cent

Opened Aug 17-1880

Closed " 17-1880

Reopened Mar 24-1887 by J.A. Mackmar 27



New England Butt Co
31 Pearl St.
J Frank Read
D.L.

Permit 2855-

at curb 10.8

Opened Aug 17-1880

Closed " 18-1880

Reopened & closed Mch. 20 1899

J. F. Read D.L.

Reopened Nov. 18-1907

Closed " 22-1907

J. H. Burlingame D.L.

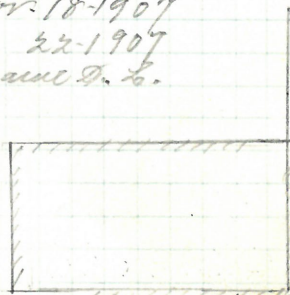
Reopened Oct 11, 1925

Closed Oct 14, 1925

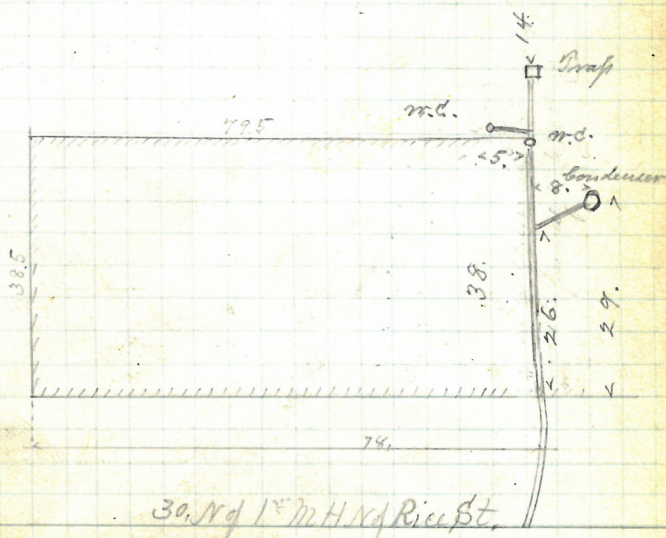
Sp. Rudon - aid 4" I

See Blue print

Plotted



Rice St.



Pearl St.

Brown University
 William F.anagan Lessee
 Brook St. Manning St.
 Timothy J. Sullivan

Permit 2857

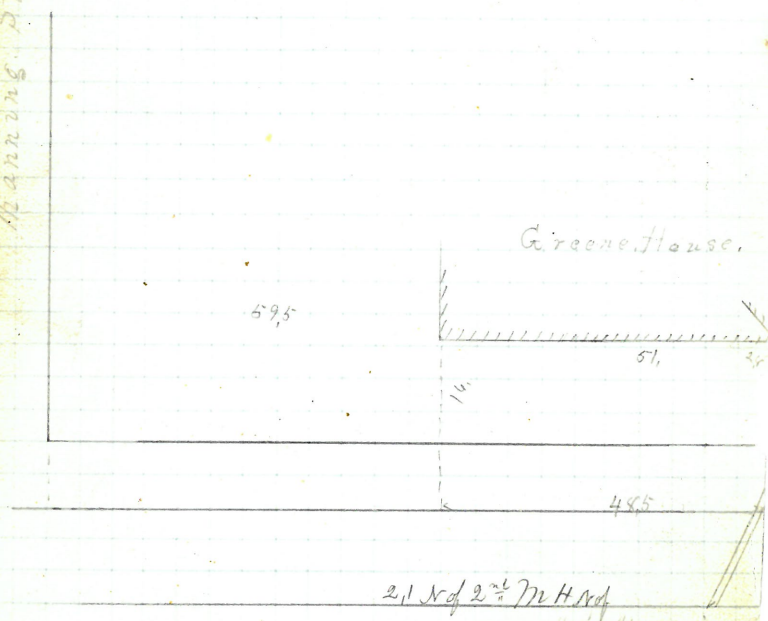
Y Cut at curb 8.9

Opened Aug 17-1880

Closed " 21-1880

Plotted

Manning St.



Brook St.

Manning

Francis B Peckham
 97 Arnold St.
 Thomas, B. Rejs

Permit 2858

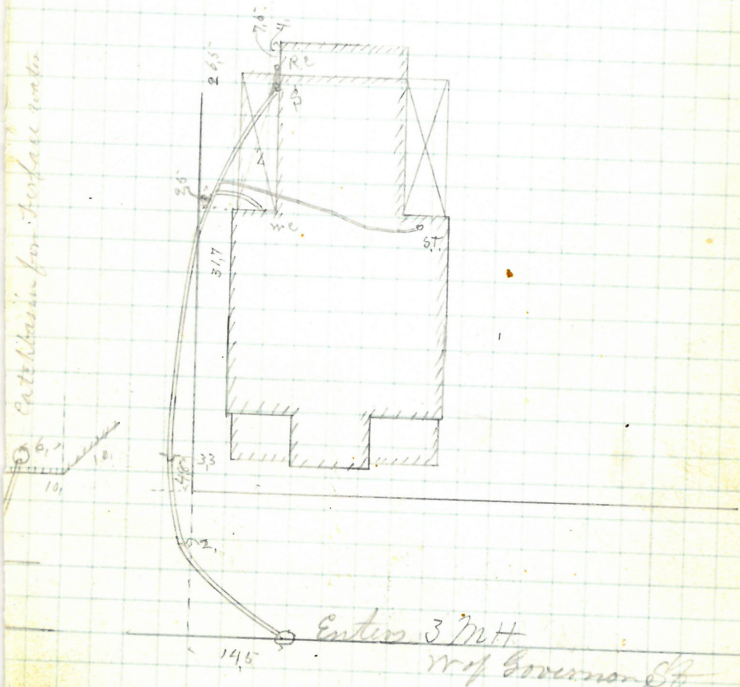
Cut at Curt 9.3

Opened Aug 24-1880

Closed " 31-1880

Reopened Nov 3-1880 by J. W. Furlong

Plotted



Arnold St.

EX 2809

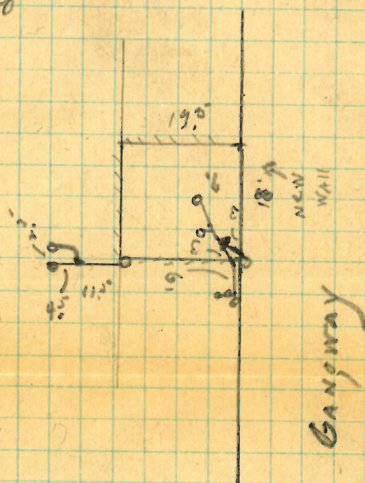
Oct 11/28

183
109

Henry Pearce
72 Clifford St

Opened - Oct 20/28
Closed

C. Davis



Eddy St.

183 ✓
109

Edward Pearce
 Mayor for Benevolent St #54
 Thomas B Kops

LL

Permit 2862

Opened Aug 25-1880 ^Y Curt-21-Curt 10.
 Closed " 31-1880 Reopened Aug 21-1925
 Reopened Mch 6-1903 W. W. Halliday, D.

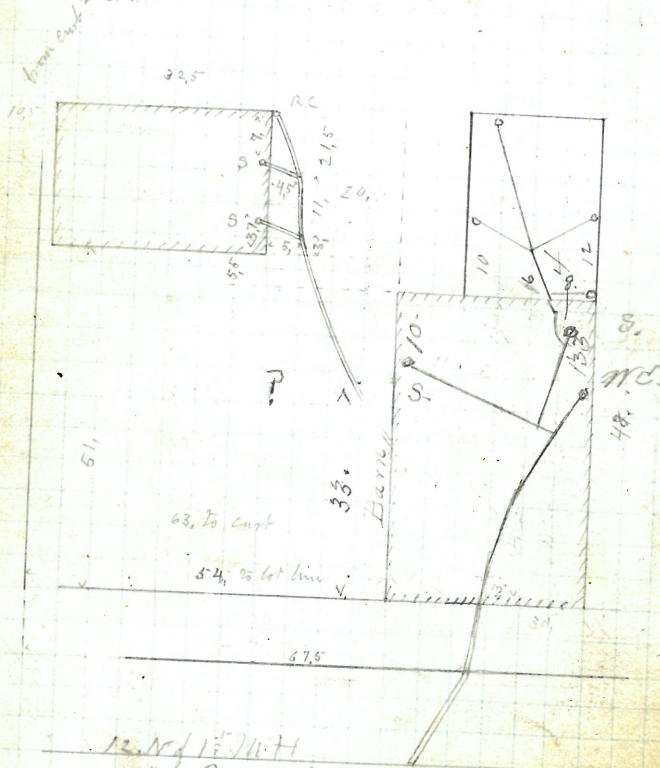
Closed " 7-1903 Per Aug 3, 1932
 L. C. Stevenson D. L. - Wd " " "

Reopened Apr. 8, 1929

Closed 12, 1929

W. A. Wells D.L.

H. Buchanan Lh
 Plotten Chan.



12. N of 11. W H

Benevolent St

Thayer St.

Removed

111

Estate of Rufus Gram
Friendship Cor. Chestnut St.
William J. Hogg

De

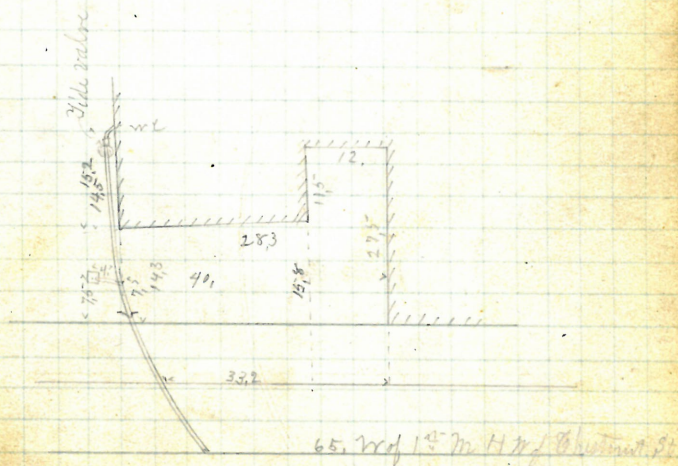
Permit 2863

Y Cut at East 10.1

Opened Aug 25-1880

Closed Sept 3-1880

Plotted



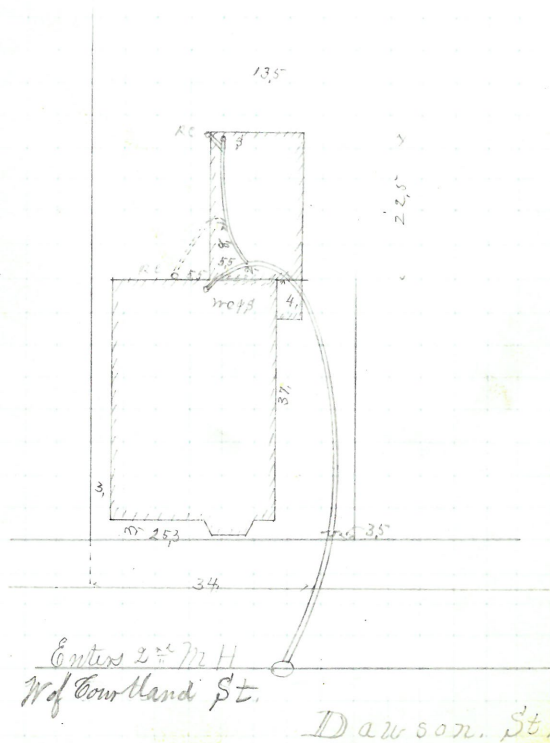
Friendship St.

Ithiel J Davis & Wife
 8 Dawson St.
 of Frank Road

DL
 Permit 2864

Y Cut at Curt 9.6
 Opened Sept 1-1880
 Closed 4-1880

Plotted



114.

Lydia L Wilbur
99 Benevolent St.
James P. McIlard
D.L.

Permit 2861

✓

cut at curb 10.9

Opened Aug 23-1880

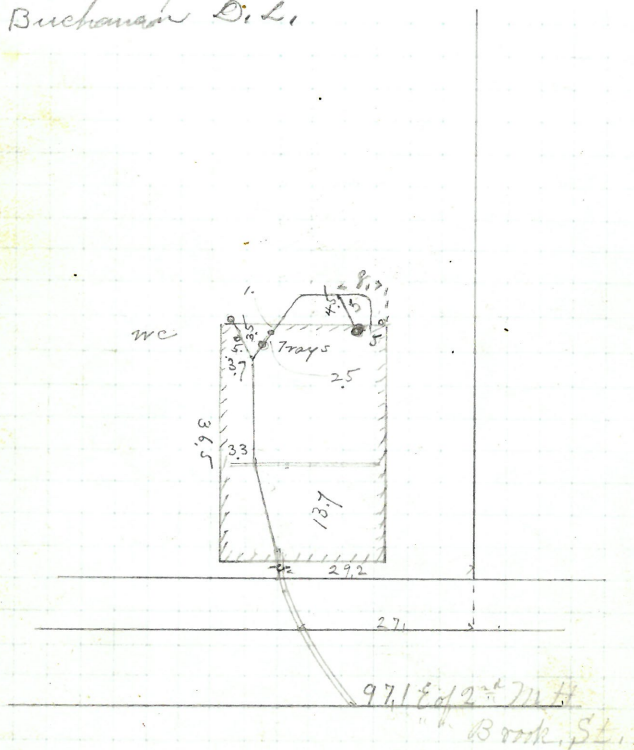
Closed " 27-1880

Reopened Dec. 19/92 to extend through cellar.
Closed " 21 " J.W. Furlong D.L.

Reopened Oct 7/1927

Closed Oct 7/1927 Plotted

R. Buchanan D.L.



Benevolent St.

GONE

Americus, V. P. Jordan
41 6th St
Bernard Brady
D.C.

Permit 2865

✓ Cental-Cent 9.9

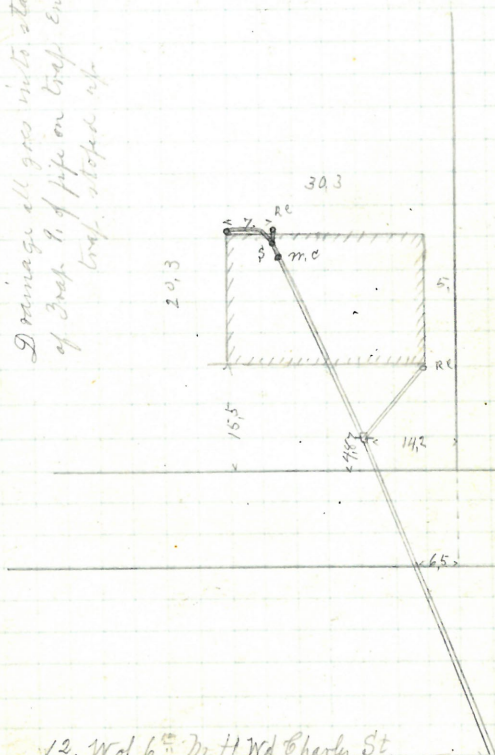
Opened Sept- 8-1880

6/10/80 14 10-1880

Reopened June 16th 94

Boxed June 16th 94 Max O'Donnell

Plotted



12. W of 6th N. H W of Charles St.

Orms. St.

Smith Over
22 Cushing St
Ellery Willard
D.L.

Permit 2867

Opened Aug 31-1880
Closed Sept 16-1880
Reopened Nov 6-1888

Connects with drain
Previously laid

Plotted

Reopened July 1899
Closed " 11/ 1909
J. H. Reed D. L.
Cut in abt 15' of flow
in place of clay -
Reopened May 5 1905
Closed " 9-1905
C. R. Blackmar D. L.

462 W 12th Prospect 86

Cushing St.

Prospect St.

9' cut

P- $\frac{162}{10}$ 119

Rachel M. Jackson
159-161 Friendship St.
James, C. Peck

DL -
Permit 2870
Y Cut at curb 98

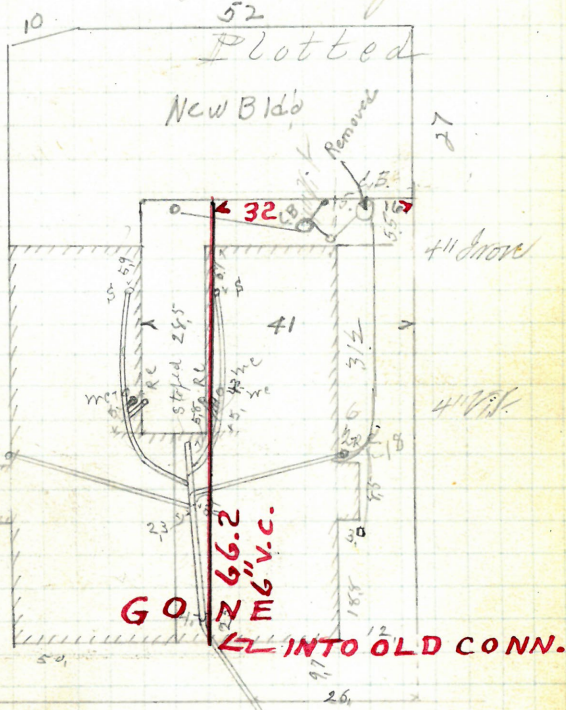
Opened Sept 8-1880
Closed " 11-1880

Proposed Aug. 29-1924
Closed " 30-1924
C. C. C. D. L. -

Proposed May 15-1926
Closed " 15-1926
L. L. Larling & D. L. -

Re-opened Sept 27-1948
Closed Sept 27-1948
add 2 RC New City old a 13
Removed P. L. L. L. D. L.

OPENED 12/3/75
CLOSED 12/3/75
D. L. F. LEONE
INTO OLD CONN.
6" V.C.



38 W. 4 1/2 M. H.
Richmond St.

Friendship St.

All of the drain pipe carried to curb
by city are Plotted

Cut at Curb 9,8

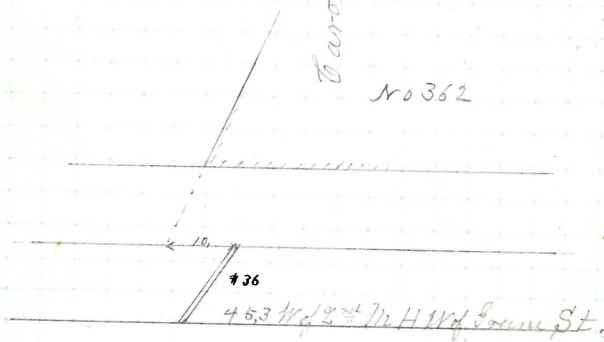
Aug 9. 1880

14. Laid

Left. South

Caroline Lyman

No 362



Westminster St.

Out at Curb 9.8

Aug 9 - 1880

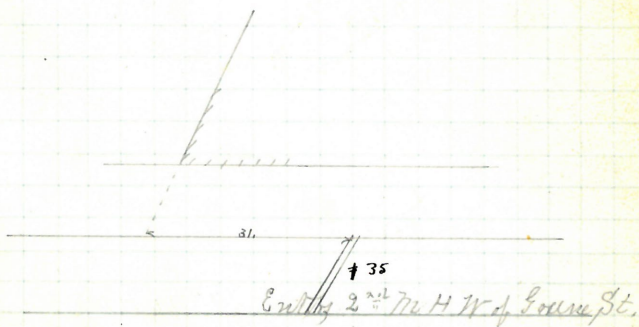
12. Laid

Y

Left South

Caroline or Daniel Lyman

Between 352 & 362



Westminster St.

Out at Curb 9.7

Aug 15-1880

16. Laid

Left South

Left West of 342

David W. Leonard

Mr. Williams

275

#34

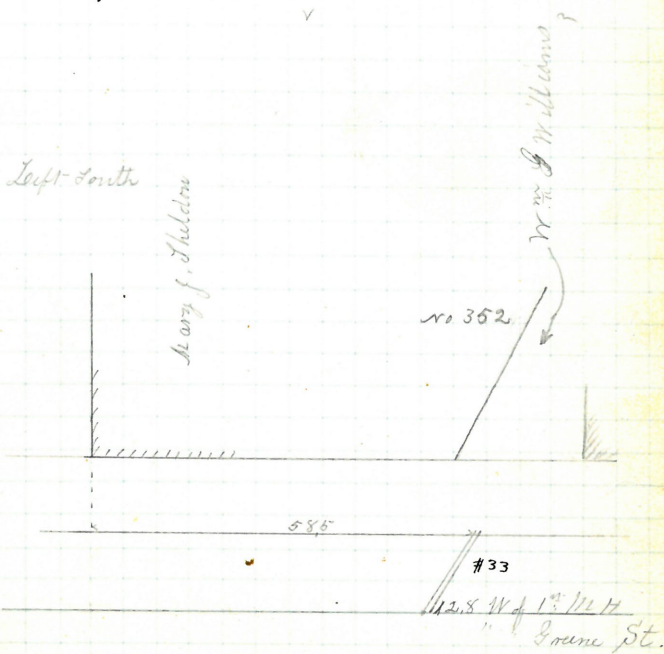
55. W of 1st N. H. W. of Green St.

Westminster St.

Out at Curt 10.

Aug 10 - 1880

16, Laid



Westminster, St.

No 2

Cut at Curve 10, 2

Cut at Curve 10.

Aug 11-1880 No 2

Aug 10-1880 No 1

No 2/8, Laid with one curve
at corner

No 1-16, Laid

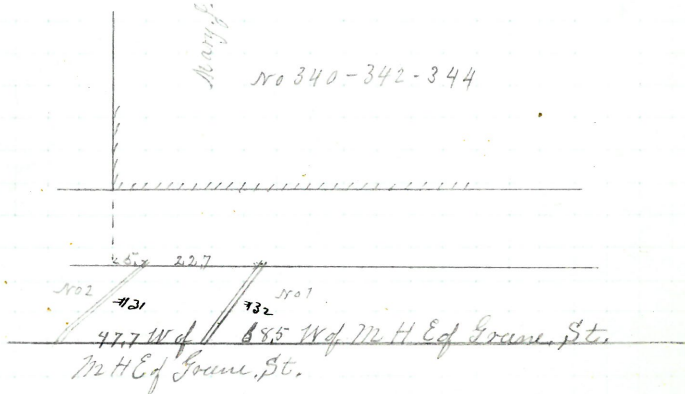
✓

✓

Left South

Mary J. Sullivan

No 340-342-344



Westminster, St

Cut at Curb 10.

Aug. 11 - 1880

14. Laid with one curve

Y

Mary Frances Hopper

Right North

No 381

Javar-Lamus

No 371

48.

1130

69.3 W of 2nd Mt
" " Grove St.

4. 1. Greene St.

Westminster, St.

given Sept 29.86.
O.C.

Out at Curt 9.8

Aug 12-1880

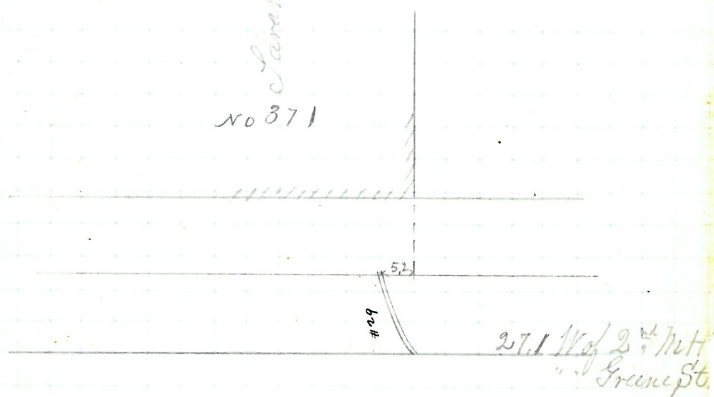
14, Laid with one curve

Y

Right North

Laid Canals

no 371



Westminster St.

Cut at Curb 7.8

Aug 12 - 1880

13, Laid with one eighth turn

Right North

Edward Pearce & Wife

Y

Julia Bullock

no 367

28.5

#28

79.1 W of 1st N H
Gran St.

Westminster St.

No 1

No 2

Cut at Curt 10.

Cut at Curt 10.1

Aug 13-1880

Aug 16-1880

12, Laid with one curve

14, Laid

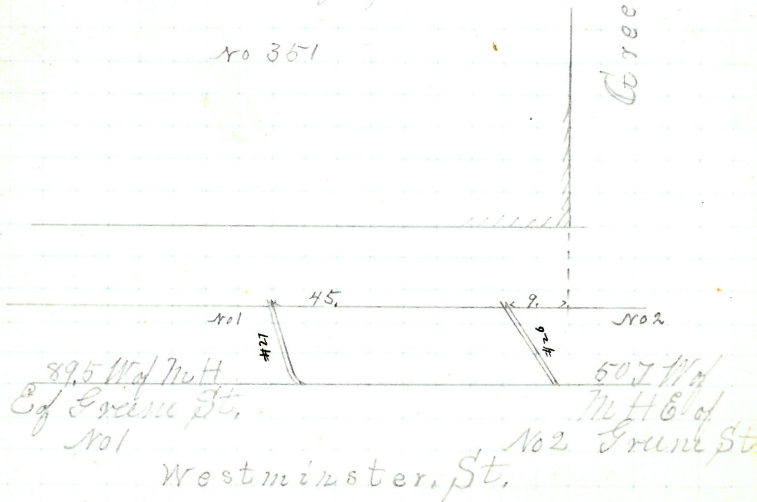
v

v

Sarah D. Bancroft
Right North Wife of, P. Whiting
E. Dyer for Trustee

No 351

Greene St.



No 1

No 2

Cut at Curt 9,8

Cut at Curt 9,9

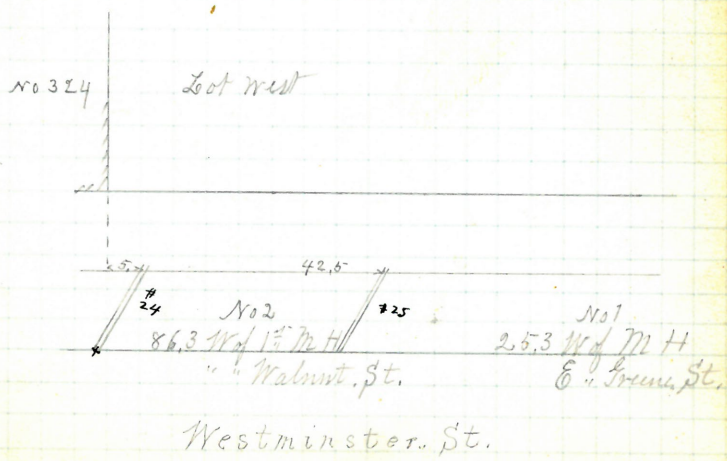
Aug 13-1880

Aug 13-1880

14. Laid

14. Laid

Left South, George W. Hallett



Cut at Curt 9.7
No 2

Aug 16-1880

14, Laid
No 2

v

Cut at Curt 9.8
No 1.

Aug 14-1880

11, Laid with one eighth turn
No 1

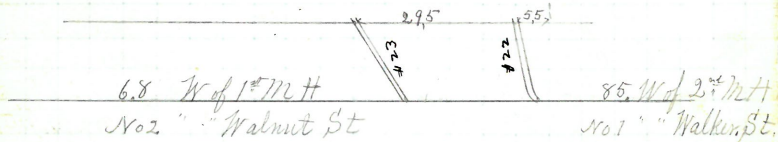
v

Right North

Thomas R. Hopkin heirs

No 343-341-339

Walnut St.



Westminster St.

Cut at Crest 8.6

Aug 14 - 1880

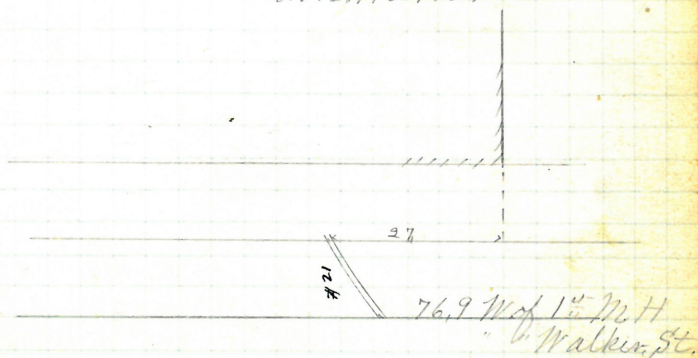
14, Laid

v

Right North

No 317

Amos M. Warner



Westminster St.

Cut at Curt. 81

No 1

Aug 14-1880

12. Laid

Y

Right, North

Jerrold. B. Barnaby

Nos 30130 291

Cut at Curt 81

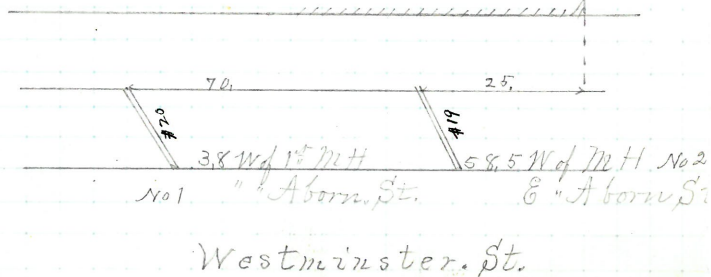
No 2

Aug 16-1880

14. Laid

Y

Abern. St.



Cut at Cust 9.1

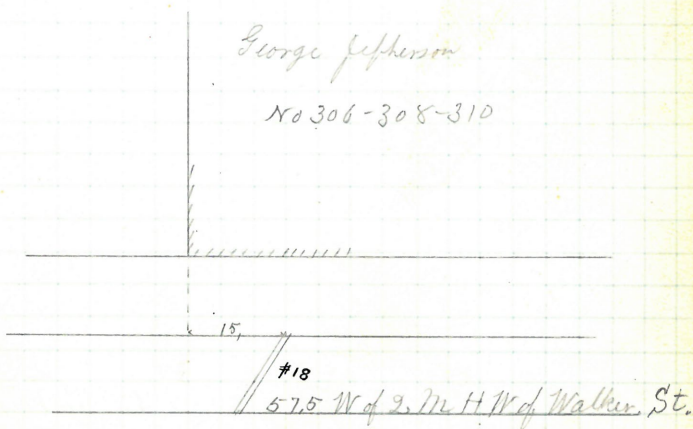
Aug. 17-1880

14, Laid

Left South

George Jefferson

No 306-308-310



Cut at Curb 8.8
No 3

Aug 19-1880

12, Laid

Y

Cut at Curb 8.8
No 1

Aug 19-1880

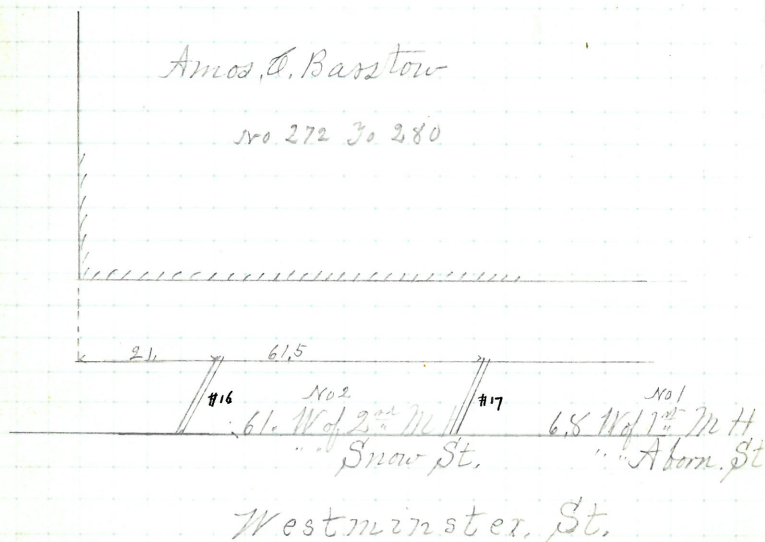
12, Laid

V

Left South

Amos, C. Barrton

No 272 to 280



Cut at curb 8.2

Aug. 17-1880

14. Land with one curb

Y

Left South

Daniel W. Lyman

no 262,

55

115

43. W of 1st W H W of Snow. St.

Cut at Cost 83

Aug 20-1880

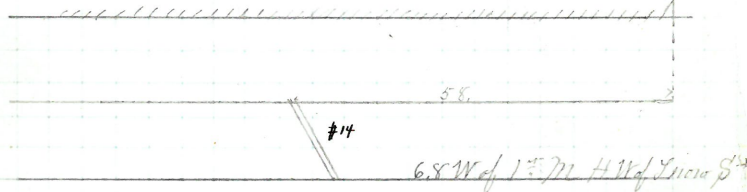
12, Laid

Right North

No 283

William M. Hoffman

S. D. Row. St.



Westminster St.

Out at curb 8,
No 2

Cut at curb 8.1
No 1

Aug 28-1880

Aug 21-1880

14. Laid

13. Laid with Eighth turn

Left - South

No 238-240-242-244-246-248-250

2nd?

9.5'

#12

3.8 W of 2nd Mt

Matheson St.

No 2

Westminster St.

#13

46 W of 2nd Mt

Matheson St.

No 1

Out at Cor. 8,6

Aug. 28-1880

14, Laid

Left Smith

Left Fuller Hairs

No 392

Burrill St.

52,8 W of C.M.H.
Walker St

Westminster St.

Cut at curb 7.9

Aug 26-1880

12. Laid

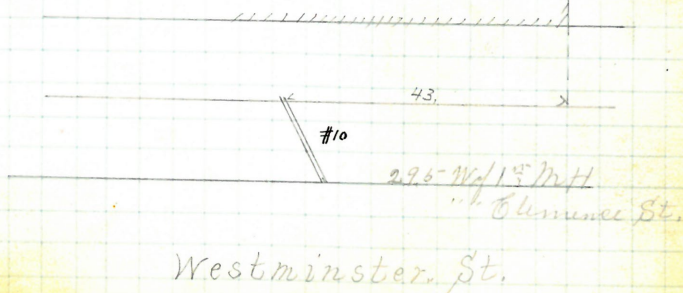
v

No 235-237

Right North

Lloyd A Bingham

Clemence St.



Cut at curb 7.8

Aug 28-1880

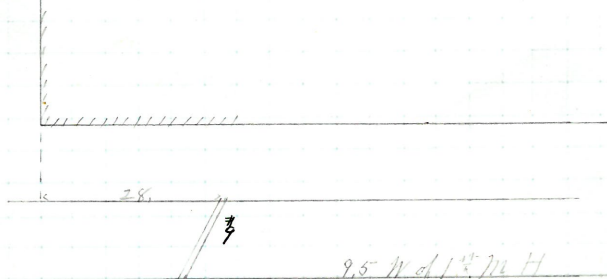
12, Laid

v

No 310-212

Left South

Clemence St

James M Riple
Richard Brownell Hairs

Westminster St

Cut at cut 7,6

Aug. 31-1880

12. Laid

Y

Left South

No. 94-196

Union St.

J. B. Barnaby

Gardner Luther
Harris

250

#7

74 W of M H
E. Union St

Westminster St

Cut at End 7.6

Aug 31-1880

12, Laid

v

Left- Louth

No, 200-202-204

Clemence, St.

Freeman Beckwith
Heiss

#8

21, W of 1st N. H.

" Union St.

Westminster. St.

Cut at curb 7.2

Sept- 3-1880

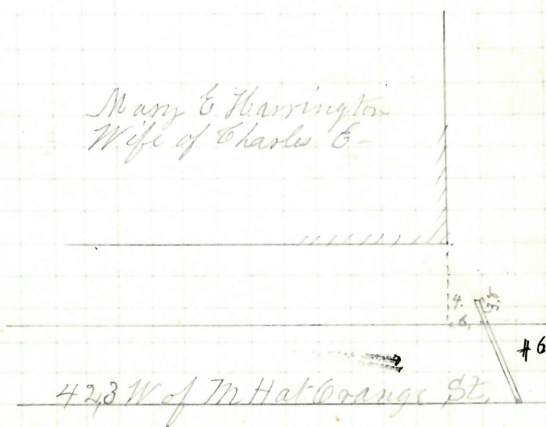
16, Laid with on curve

V

Dorance, St.

Right- North

No 135

Mary E Harrington
Wife of Charles E

423 W of M. H. Orange St.

Westminster St

Cont at cont. 7.6

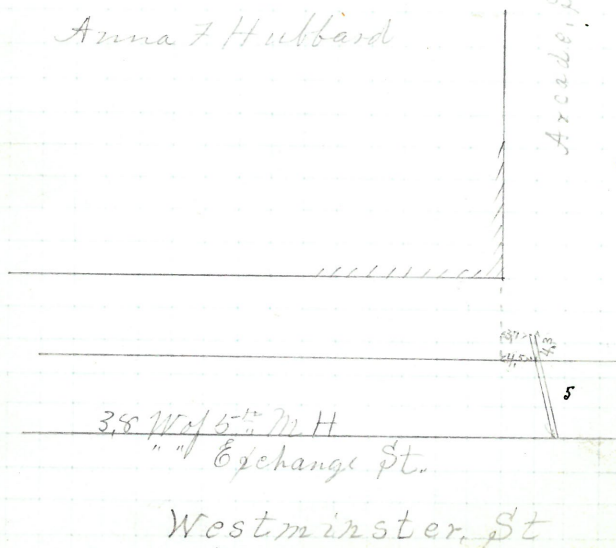
Sept 2 - 1880

16, Laid with our curve

Right North

No 113-116

Anna F Hubbard



Contat. Curt 7.8

Sept 2 - 1880

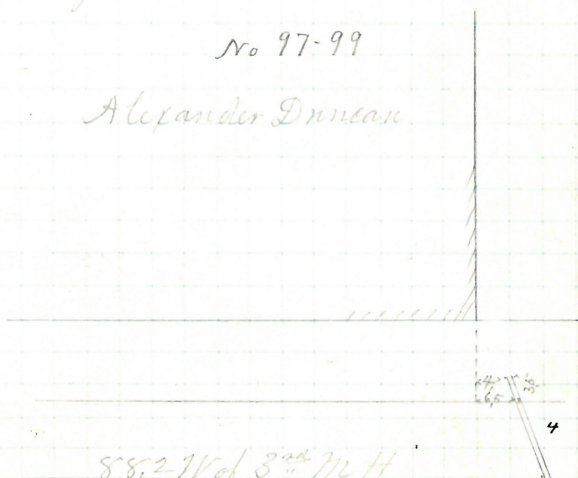
16, Laid

v

Right-North

No 97-99

Alexander Dunnean



88.2 1/2 of 3rd M H

" " Exchange St

Westminster, St

Cal at last 7.6

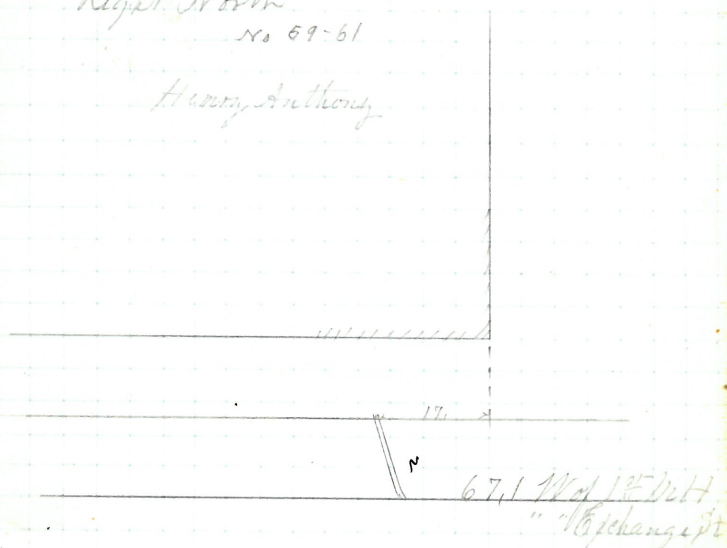
Sept- 3-1880

12. Said with enclosure

Right North

no 59-61

Hurray, Anthony



Westminster. St

@.67

Cut at East 7.2
No 1

Cut at East 7.7
No 2

Sept-1st - 1880

Sept-1st - 1880

12, Laid with two eighth bends

14, Laid with one curve

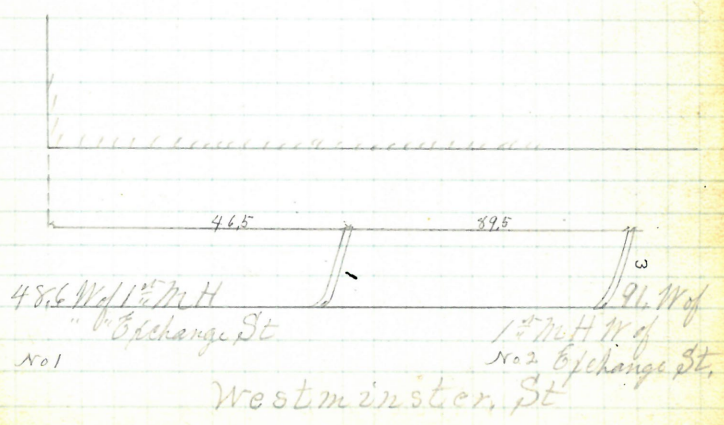
Y

Y

Left-enth

No 3830 46

John Carter Brown Estate



148 ✓

John B. Hennessy
654 Whelden St.
John Keogh
D.L.

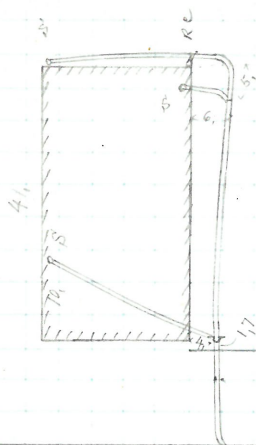
Permit 2871

V. Tent at Curt. 83

Opened Sept 8-1880

Closed " 10-1880

Plotted



44.11 of 2nd M.H.

McKenna St.

Whelden. St.

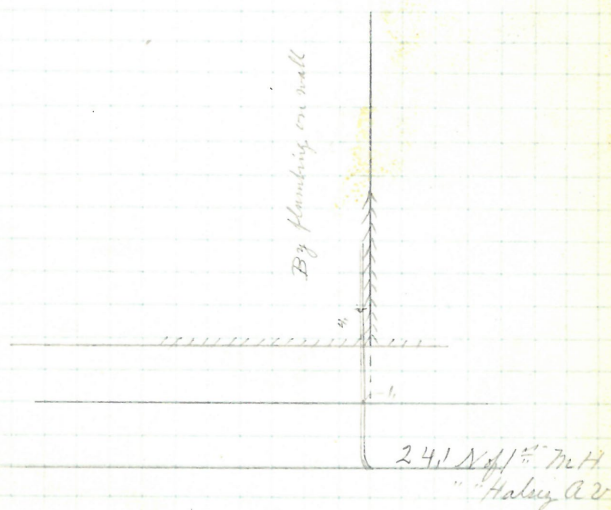
154

Estate of Oraz Yapt.
12 - 14 South Water St.
Nathan B Horton

D.L.
Permit 2869

Y Cut at Cost 7.6
Opened Sept-13-1880
Closed " 17-1880

Plotted



South. Water. St.

Estate of James J. Rhodes -
27-29 North Main St.
George R. Phillips
D.L.

Permit 2874
Y Cut at East

Opened Sept 23 - 1880

Closed " 24 - 1880

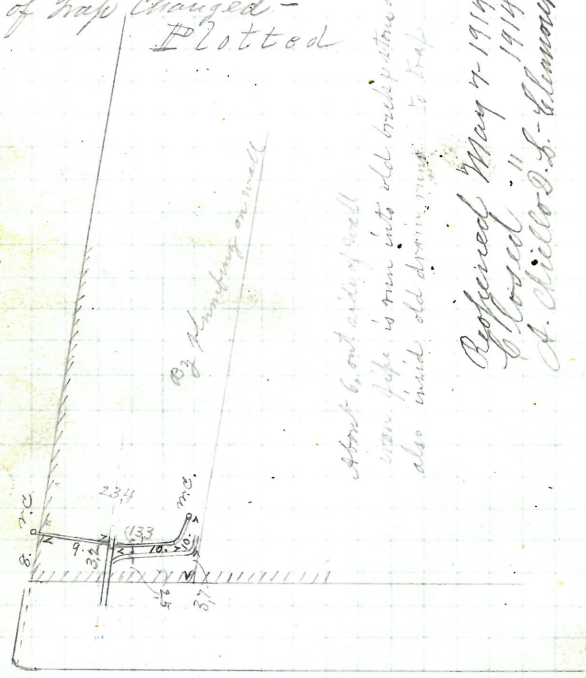
Reopened Dec. 24 - 1896

Closed " 24 - 1896 C. Tierney D.L.

Reopened & closed July 23 - 1903
J. B. McKee D.L.

Size of trap changed -
Plotted

Jackson Court.



Street to cut side of wall
trap. pipe is run into old brick pipe down
also inside old down pipe to trap

Reopened May 7 - 1914
Closed " 1914
A. Chillo D.L. - Elmwood

North Main St. 846 N of 1st M.H.

John P. Knowles
 Theat^{sw} for John St #31
 James P. Mullard

De-
 Permit 2875

Opened Sept 23 - 1880
 Closed " 25 - 1880

Reopened Mch 12 1895 - Cleanout

Dred H. Read J. S.

Reopened Dec 29 1896 - Cleanout

Closed " 29 1896 - H. H. Read J. S.

Reopened 6/6/61

Closed 6/8/61

D.L.D. Welshman

Clear Remove Trap.

Plotted



See Plan 167

Sheet 11-

Enters Sewer in Arnold Street through
 private drain in Thayer Street
 Thayer St.

154.

Thomas Board for
9. Maple St.
Bernard Brady
D.L.

Permit 2876

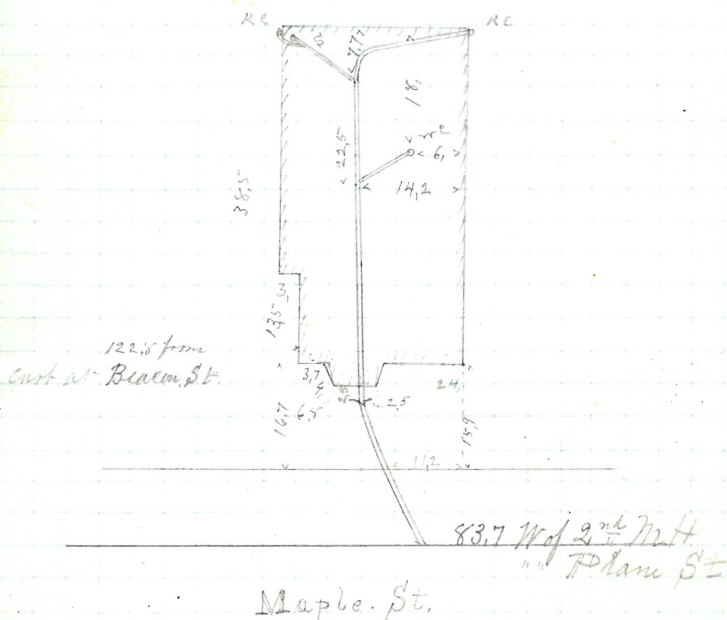
✓

Ent at curb 102

Opened Sept. 27 - 1880

Closed Oct. 9 - 1880

Plotted



48-50.

Henry Callahan & Wife
35 Sheldon St.
John Keogh

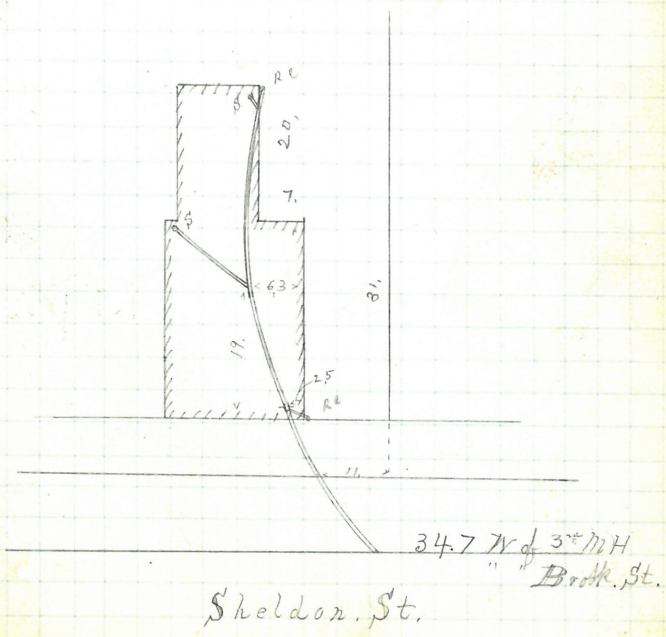
Permit 2877

Y Cut at curb 9.3

Opened Sept 30 - 1880

Closed Oct 4 - 1880

Plotted



H. $\frac{157}{5}$

156-158 Carpenter, St.

D.L. -

Permit 2878

✓ But at least 10,1

Opened Oct 2 - 1880

Florida " 4-1880

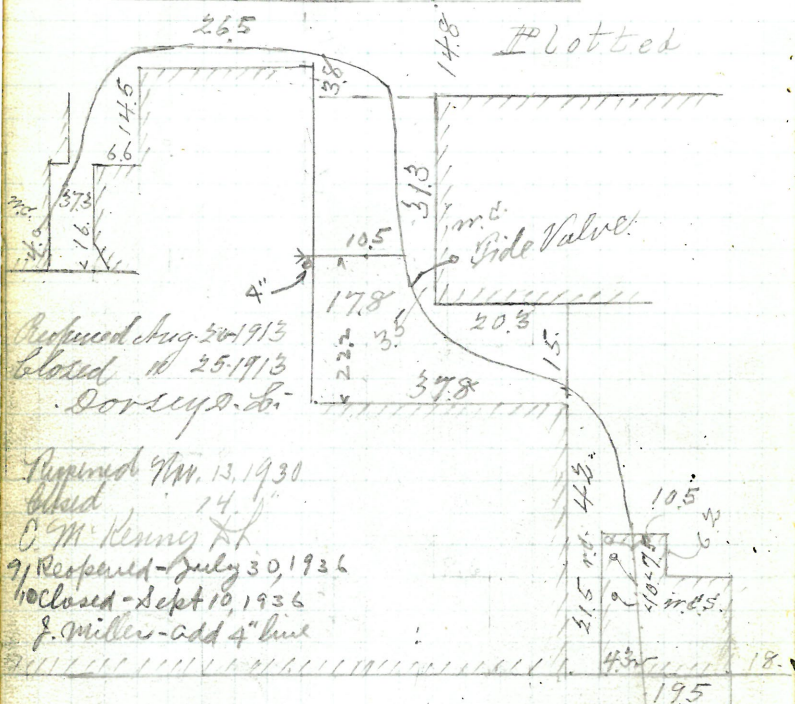
Reopened Dec. 30-1914 Reopened Oct. 10-1913

Closed 11-30-1914 Closed 11-10-1913

W. Longhery D. D.

Dotsey D. L.

- I sink above -



Carpenter Street

*Enters sewer 93' West of 1st manhole.
" " Bridgman St.*

REMOVED

V 157

William J. Frazer 3d
51 Bridgman St.
of Frank Reid
D.L.

Permit 2879

Y Cut at curb 10.2

Opened Oct 12-1880

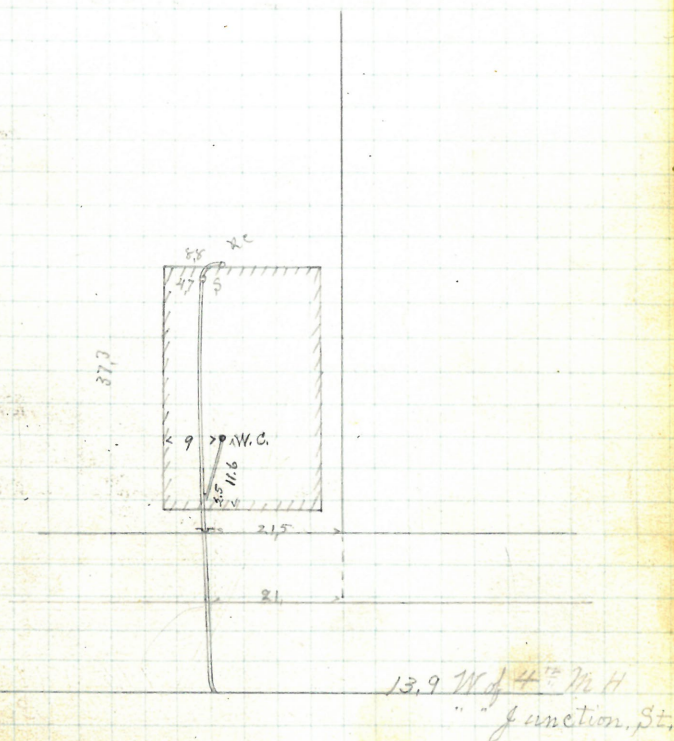
Closed " 14-1880

Reopened July 29-1893

Closed July 29-1893

C.R. Blackmar D.L.

Plotted



Bridgman St.

158.

REMOVED

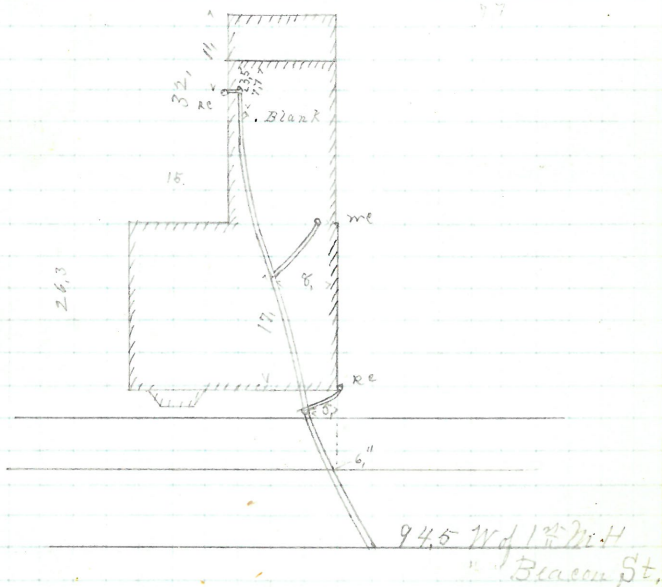
Julia A. Studley
275 Friendship St.
James O. Peck -
D.L.

Permit 2883

Y Cut at Curb 9.5

Opened Oct 18-1880
Closed " 21-1880

Plotted



Friendship St

REMOVED

159

Sylvester, R. Jackson
233 Friendship, St.
Thomas, B. Rojs

D.L.

Permit 2880

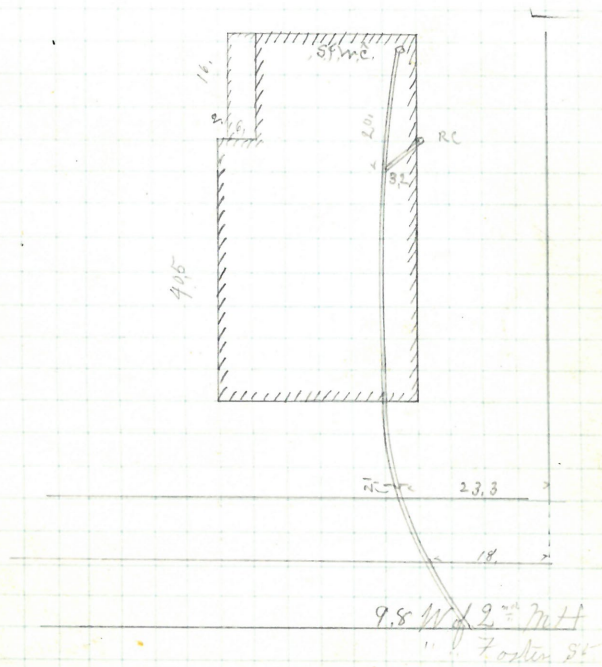
✓

cut at curb 9.5

Opened Oct 15-1880

Closed " 21-1880

Plotted



Friendship, St.

169

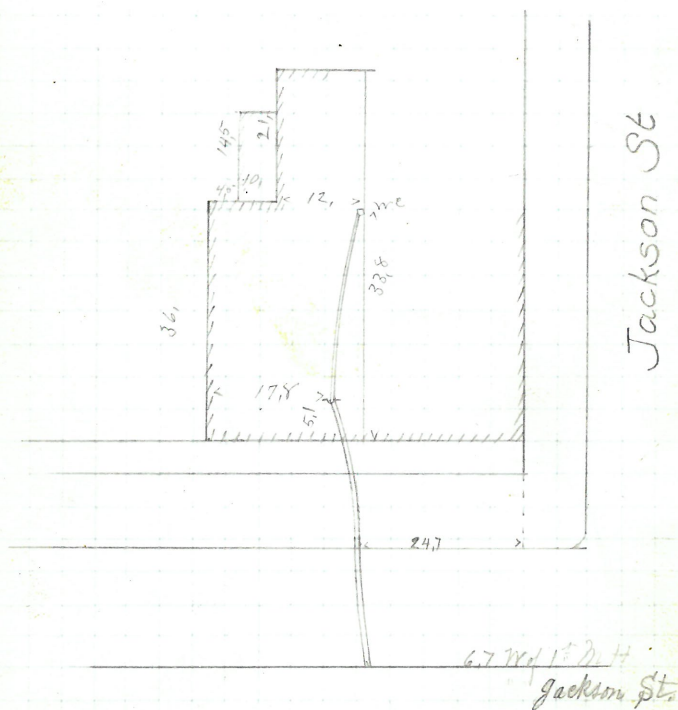
169
7

James J. Slocum
#228 Washington St. n. cor Jackson
J Frank Read

Permit 2881
Cut at Curb 9.2

Opened Oct 14-1880
Closed " 16-1880

Plotted



Washington St.

✓ 61

Opened Oct 14-1880

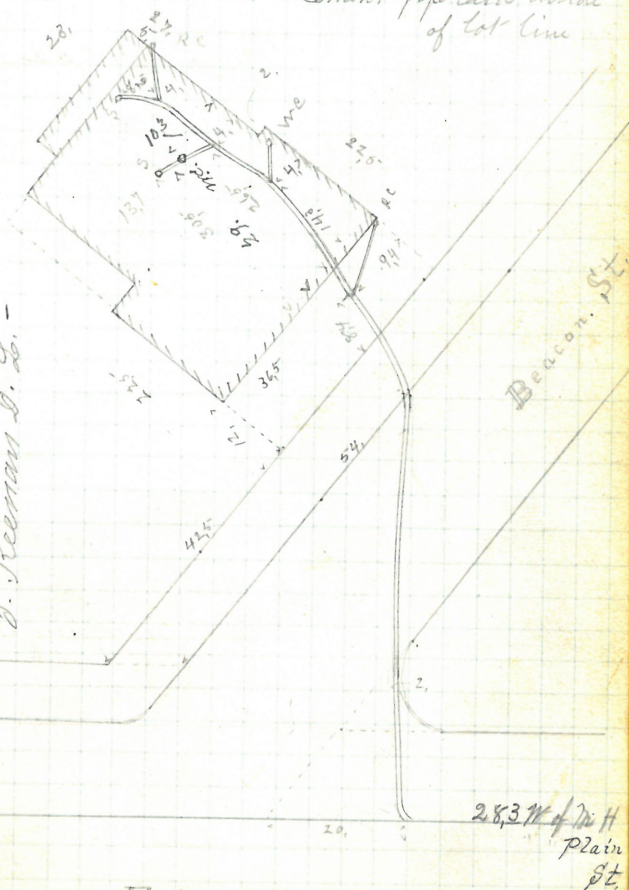
Cloned " 21-1880

Reopened Nov. 17, 98. Closed Nov. 22, 98 - P. Tierney D. L.

Dropped into openings left by D. L.

#20tted

Cement pipe laid inside
of lot line



C. W. A. Kinsdorn under the pen name -
Sept. 20, 98. See Box 195 Pg. 149

Resubmitted Oct: 8-1910 -

Le Boeuf " 10-1910 -

B. Keenan D. D. -

Friendship. St.

GONE

162 $\frac{1}{2}$

#23

Jane Murphy
Timothy J. Sullivan

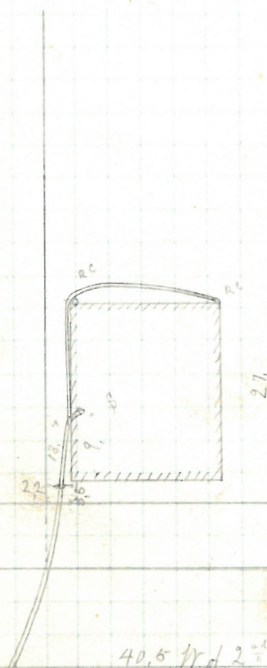
Permit 2886

Out at curb 10.7

Opened Oct 19-1880

Closed " 20-1880

Plotted



Trenton, St.

A. Phonso, R. James
45 Carpenter St.
J Frank Read

D.L.

Permit 2885

Cut at Curb?

Opened Oct 25 - 1880

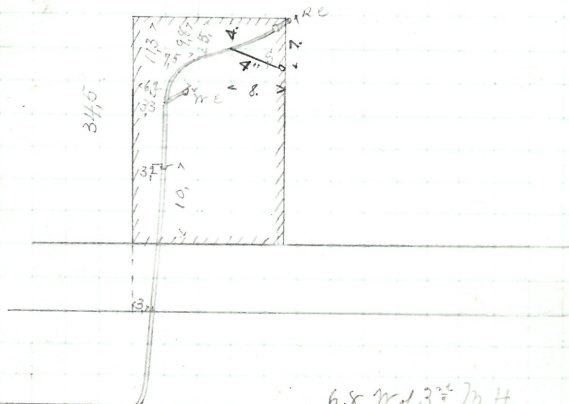
Closed " 28 - 1880

Reopened - July 15, 1935

Closed - July 15, 1935

F. Enrico Add.

Plotted



Carpenter St.

Thipard St.

164

Permit 2887

Permit 2887
Opened Oct 20-1880
Closed " 25-1880

16. Ed 6th MH
" " N Main St

Lippett. St.

Ann Mc Niff
23 Palmer St.
John Keogh
D.L.

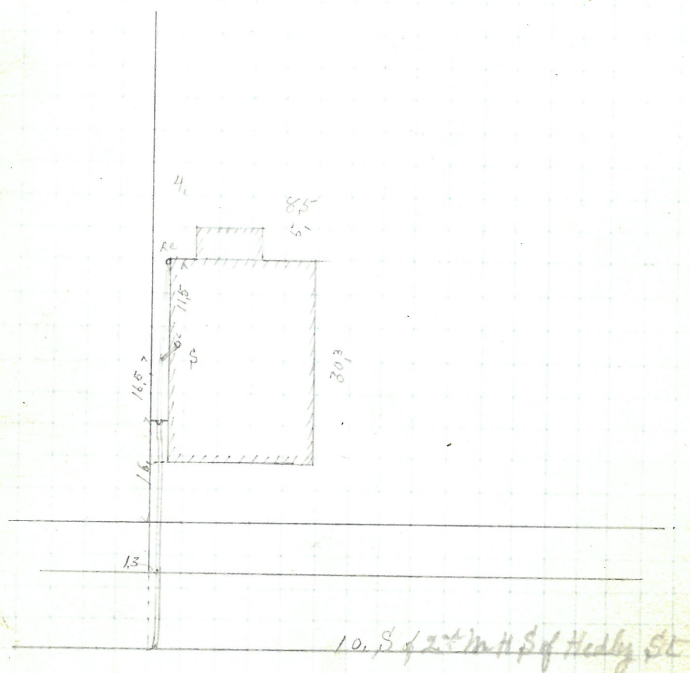
Permit 2888

Y Cut at curb 10.6

Opened Oct 26-1880

Closed " 27-1880

Plotted



~~Removed~~
Lucius Wearer & Ed

Langley, St.

J Frank. Read. D.D.

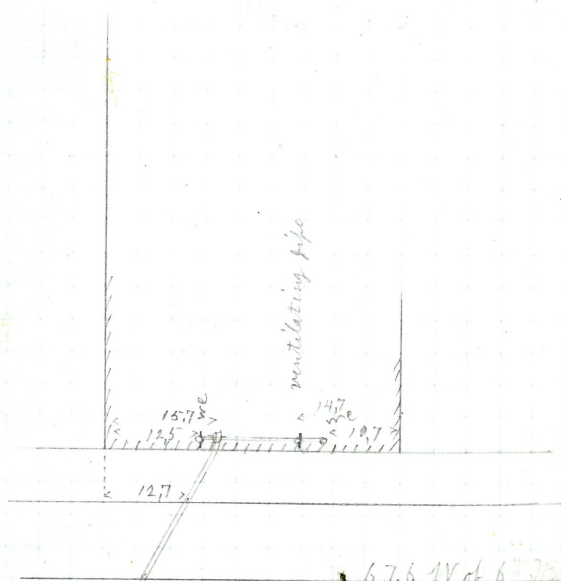
Permit 2891

V. Cut at Length 9,3

Reopened & closed June 5-1912

Propagated & closed June 5-1912
G. Stevens & D. L. New trap.

Plotted



Langley, St.

Page 19 P Prospect & Barnes P
~~30~~ P 62 Langley St P
~~29~~ " " & K. R. P. to do
~~57~~ P Camp St
~~66~~ P 207 Pine St
~~88~~ P Pine St Locate sewer in alley
~~115~~ P 49 Point St
~~123~~ Brown
~~136~~ P Point St
~~140~~ P which house locate from alley
~~69~~ P Hospital St P
~~47~~ P Richmond St Station
~~42~~ P Locate Pearce House Clifford St
~~41~~ P Grimes Locate where door was
~~68~~ P No 1 George St
~~70~~ P Broad & Bge Locate where door was
~~76~~ P Cady St
~~77~~ P 15417 George St
~~78~~ P 7 George St
~~101~~ P 13 Cady
~~106~~ P 102 Richmond
~~124~~ P Haymarket St
~~149~~ P Cady St
~~122~~ P Camp St
~~38~~ P Waterson St
~~103~~ P Williams St
~~111412~~ P Williams St
~~114~~ P " "
~~118~~ P Transit St
~~119~~ P Williams St
~~141~~ P Pearl St
~~86792~~ P " "
~~17~~ P Waterson St
~~78~~ P Star St
~~1~~ P Livorno St

$\frac{1}{2}$ in to the pipe

