

BR #795

GONE

June 29 / 91

Lydia F. Hayward

Frank St.

To enter Prairie ave. sewer

J. Frank Read St.

Permit 6195

Opened June 30 1891
closed July 3rd 1891

cut at curb
Pipes 5"

Reopened & closed Apr. 17 1899

W. C. Chodsey D. L. G. G. G. G.

Reopened May 13 1926

Reopened May 13 1926

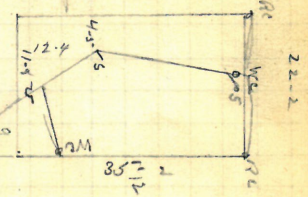
Reopened May 13 1926

Reopened Oct 31 1930

Reopened Nov 1 1930

W. C. Chodsey

Reopened & closed



Plotted:

Frank St.

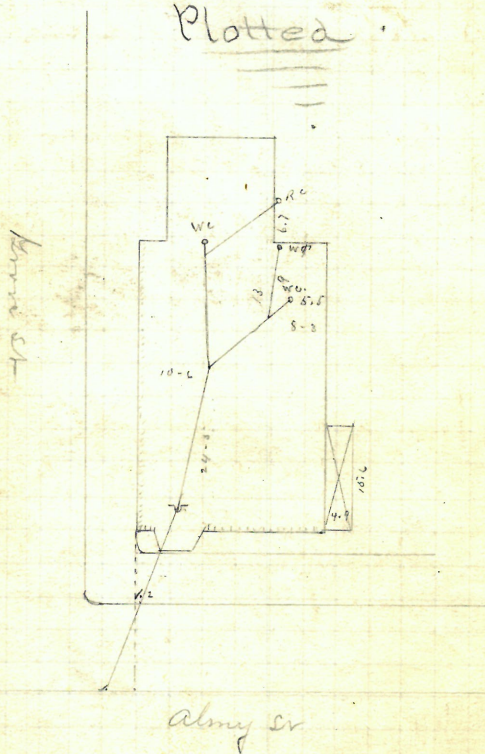
Prairie ave

Enter sewer 13.8 East of st. manhole
Prairie Ave

June 3

Elizabeth b. + Caroline F. Pot
 61 Army St.
 S.E. cor. of Grove
 J. A. Blackman, W.H. Permit 6196
 Opened June 30th 1891
 Closed July 2. 1891 cut at curb 10-
 Pipes 6"

Plotted



Intend Sewer 38-5 South of 1st
 m H North of Grove St

R. Aug 10. 1891

June 29/91

Ladd Watch base loc.

J. Frank Read, D.L.

#70 Richmond St.
New Bedford
Pump 6/14/44

Opened June 30. 1891

closed July 2nd 1891

6. Reopened - 6/14/44

9. Closed - 6/14/44

H. L. Reary

Add valve to F.D's.

Pipe 6" cut at curb 7.5'

Reopened 2/2/53

Closed 2/5/53

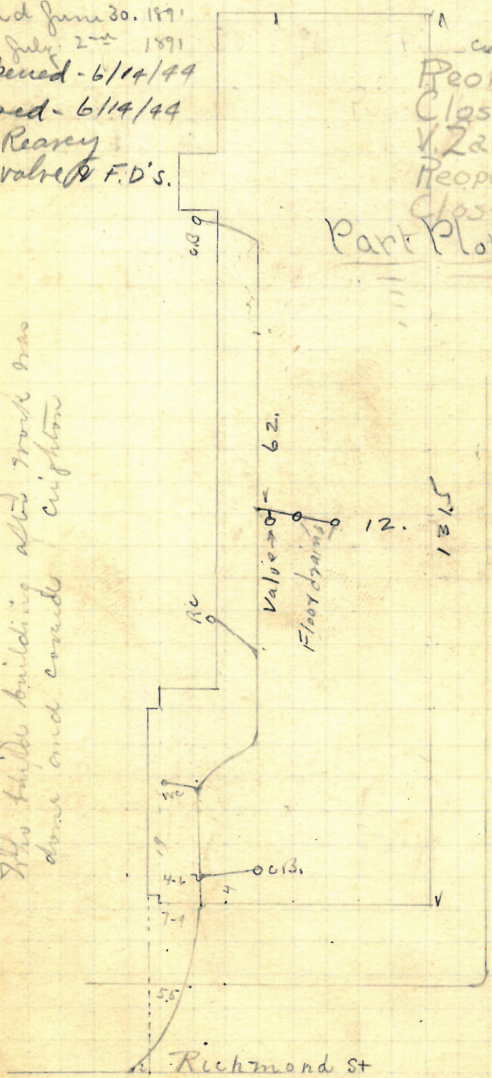
V. Zarella: add

Reopened 4/24/53

Closed 4/24/53

Part Plotted V. ZARELLA

This mainline pipe is as given me by one of the workmen for contract. This little building also took two down and covered Crighton



Bliford St

cutting sewer 52.5 S. of Range 10. 1891
2nd main S. of Friendship St.

June 30
91.

Ladd Watch base loc.

81-87

~~81-91~~

Beliford St.

J. Frank Read, D.L. No. # 20 Johnson & Vermitt # 6198

Opened June 30. 1891

cloud 30. ... cut at curb 7-

Reopened Dec. 19/29

Closed " 24/29

Reopened May 16. 1934 (5" V/4)

M. Trapanese D.L.

Closed May 25. 1934

Reopened July 2. 1934 McNally - debris open sidewalk - removed

Closed July 5. 1934

Red May 18 1948 5/19/48

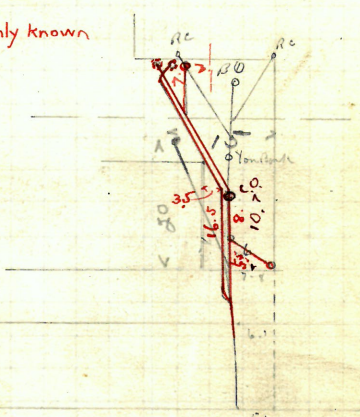
J. Tasca - 4" I-2" D.D. added clo May 20 1948

2/ Reopened - Feb. 8, 1943

Change fra. J. A. McKenney D.L.

8/ Closed - Feb. 9, 1943

P. Tratta - Relay add co.

work shown in red is the only known
drain on premises.

Beliford St.

Enters sewer 87.6 W. of
1st. m.n. W. of Page St. Rang 10th 1891

June 5 30/91

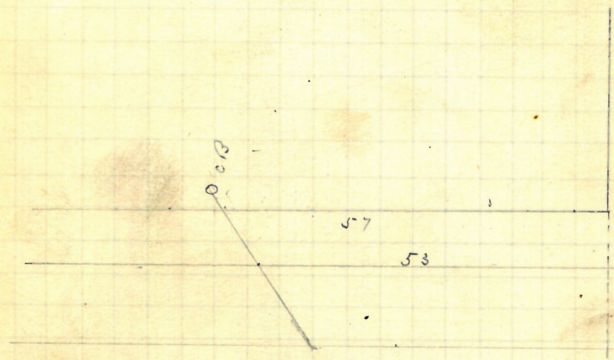
Ladd Watch lease Co.

F. Frank Read, Dr. 81-91? blifood st
Vermit # 6199.

Wind Sept 25th 91
Wind 23rd "

cut at cut 7.
Pipe 6 m

Plotted.



Enters sewer 8.5 west of
2nd M. h. west of Page St. R Oct 25th 1891

Ella L. Harris

R. Brady Dr.

481. Pine St

Ch # 16 Lindem St

Permit 6261

Opened July 2nd 1891

cut at curb 10-5

Cloud " 6 " 1891

Pipes 5 -

Opened & closed Jan 23 94

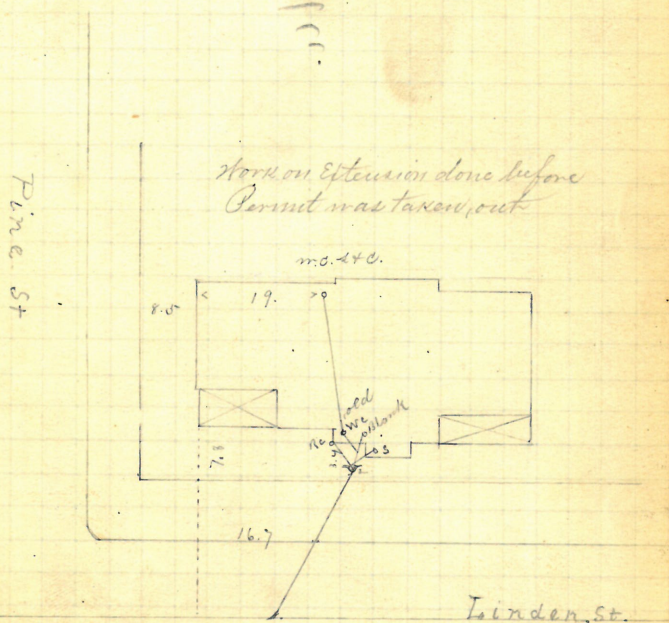
J. A. Blackman Dr.

Repaired Dec. 25 1924

closed 11 27 1924

M. M. Kallup & L. Clemmick

Plotted



Entered Survey at 1st 7th
North of Pine St

R July 8-1891

8^vP- $\frac{158}{33}$

A. C. & L. Tammillat

28 Wesleyan ave

J. T. Read St.

Permit # 6202

Opened July 7. 1891

Closed

Reopened Nov. 24 1924

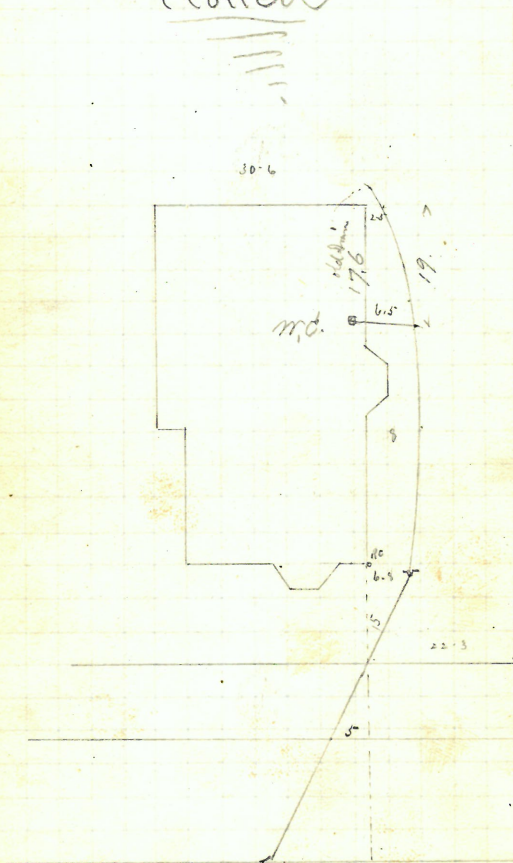
Closed " 28 1924

C. F. Thier & Co.

cut at curb

Pipes 5"

Plotted



Enters sewer 143.8 W. of
2nd mtr. W. of Taylor St. R. Aug 10th 1891

GONE

July 9 1/91

Alfred Lyman

H.R. Chadsey 13 W. Clippord St
Permit # 6203

Opened July 6. 1891

cut at cut

and 1891

Pipes 5

Reopened Nov. 16th 94

Reopened Oct. 2. 96

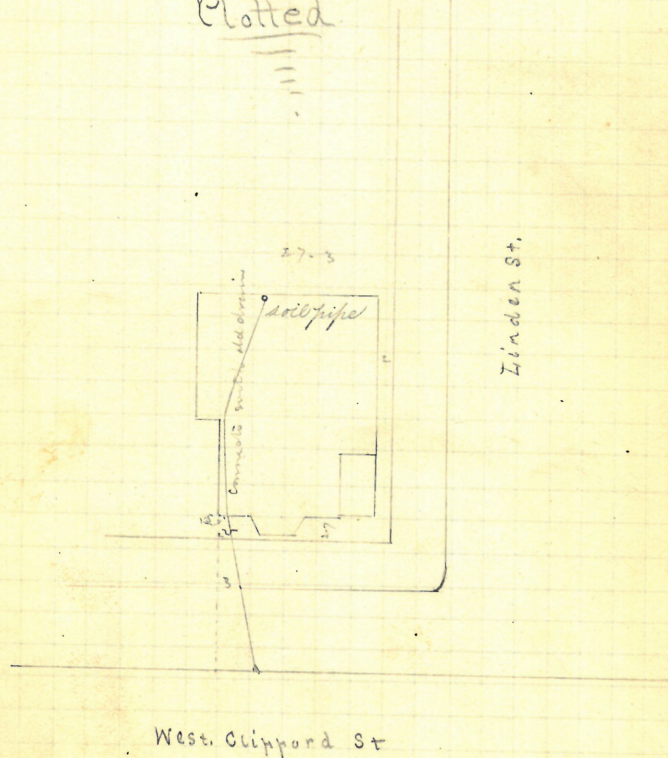
Closed Nov. 16th 94

to Cleanout

J. F. Read D.D.

J. F. Read D.D.

Plotted



Enters Sewer too. H. S. R. Aug 10th 1891
of m.r. on N. Blang line of Linden St.

George Duckworth

113rd Carpenter St

J. A. Blackmer St.

Permit 6204

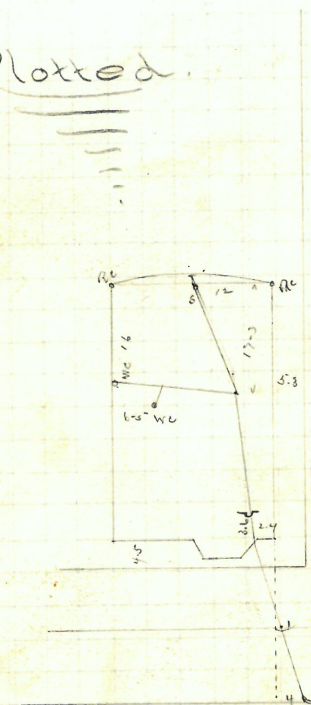
Opened July 3 - 1891

cut at cut 10-

Closed " 6 - 1891

Pipes 5-

Plotted



Entered Drive 28 ft West of 2nd
N.H. West of Dean St. Rang 10. 1891

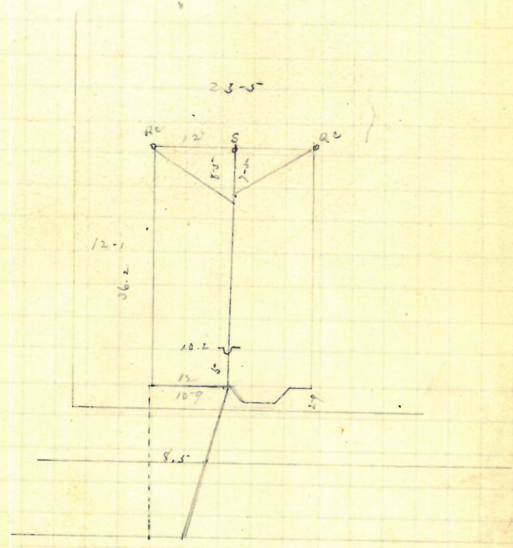
✓ July 11 3/91

Est. Benj. Mumford
52 Vernon St.
J. A. Blackman D.L. Permit # 6205.

Opened July 8, 1891
cloud .. 1891

cut at cut
Papers 5~

Plotted.



Entered River 106-3 West of
8th m H West of Battery St R Aug. 13 1891

12 ✓

July 3/91.

Ernest Dodge #115 #7

115

#71

boomstock and

J. A. Blackman D.L.

Permit # 6206.

Opened July 6th 1891.

Closed

1891

Cut at curb
Pipes 5"

Pipes 5th

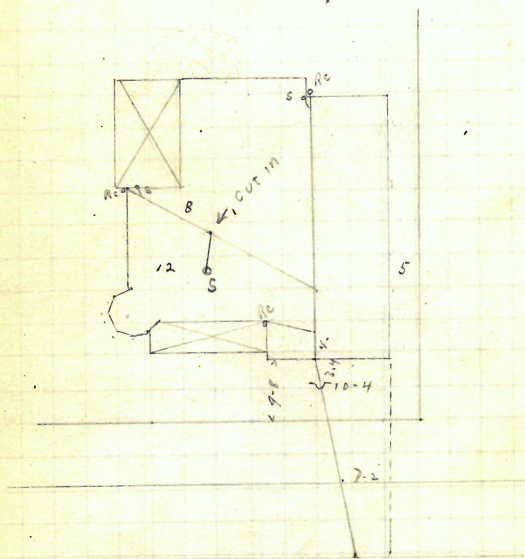
2/13/41

2, Reopened 2/12/41

113 closed 2/13/41

T. J. Martel add 3" I

Plotted.



Enter lower 83.5 ft. W.
of 2nd mth. E. of Broad st. Rang. 10 1891

Removed

July 13
91

Martin McCormick

48 ~~28~~ Robinson St.

B. Brady St.

Permit # 6207.

Opened July 7, 1891.

closed "

8. 191

cut at curb 10-5

Reopened & closed Apr. 8, 1898

Pipes 5"

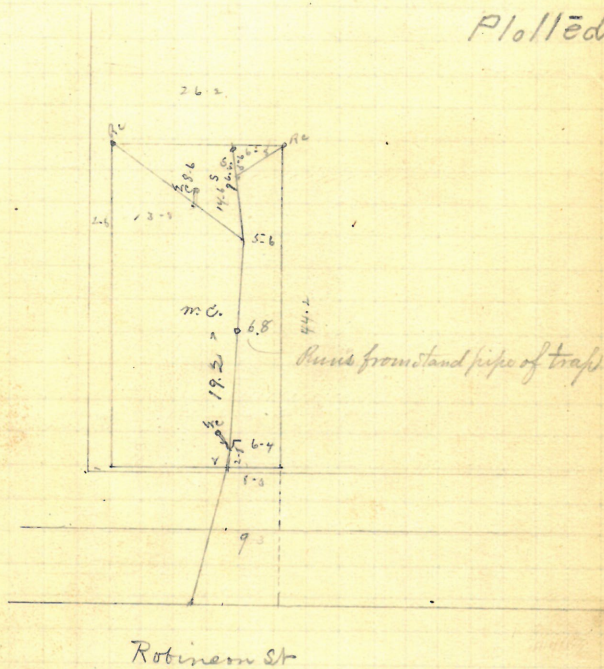
J. F. Daniels D. L.

Reopened Dec. 15, 1919

closed " 1919

H. Scherby D. L. Lebanon

Plotted



Entered since 13-0 making
3rd m. H. West of Bay St

R. July 30, 91

July 8/91

15

Franklin H. Richmond

23 Fountain
Henry R. Chadsey & Co.

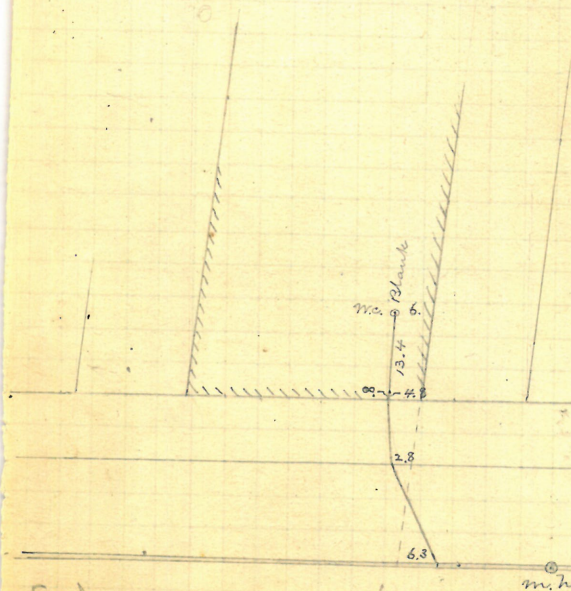
Permit 6209

Opened July 9, 1891.

Closed " 10, "

6" pipe.
Cut at curb, 7.1

Plotted



Enters sewer 17.6 ft. W.
of 1st. m.h. W. of Union st.

July 9/91

Prop D B Leo.

687 Valley St

3/ J. Blackmar S.L. Permit 6210

and July 10 1891

and " 18. 1891.

and Dec. 19th 1894and Dec. 19th 1894

Blackmar S. L.

cut at curb 7-3

Pipes 15" in.

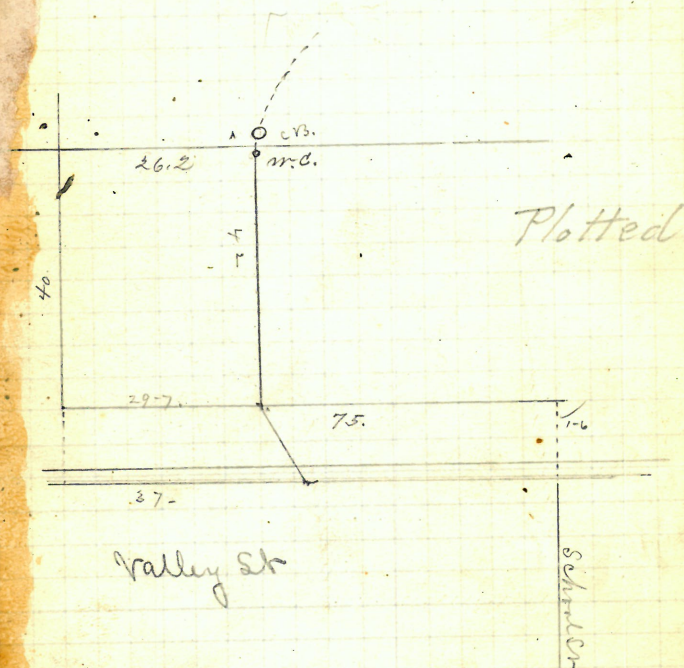
Resumed June 20-1916

Closed July 15-1916

J. Appleton S.L.

See diagram pasted

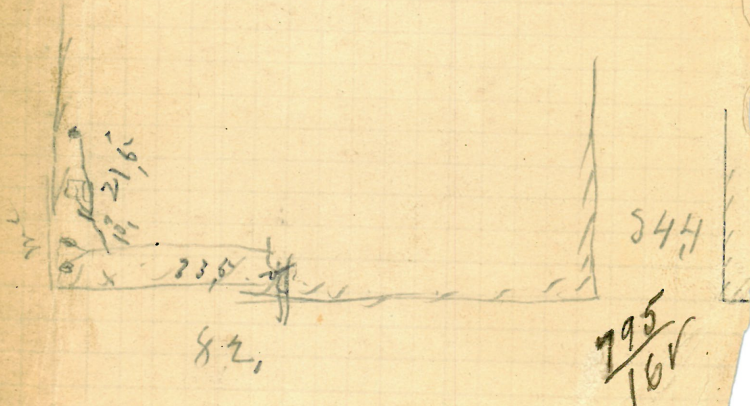
in Book -

R
6Enters sewer 241.5 ft. S.
of m.h. at Delaine St.

R Aug. 10 1891

6210 June 20 - 1916
Dorr D B & Co
52 Valley St

Appleton & Co.
copied June 20 - 1916
final July 15 - 1916



Elizabeth Lorman
15 ~~22~~ Howard ave
B Brady St. Perm. # 6211

Closed 20. 1891

Reopened Jan'y 4-1898

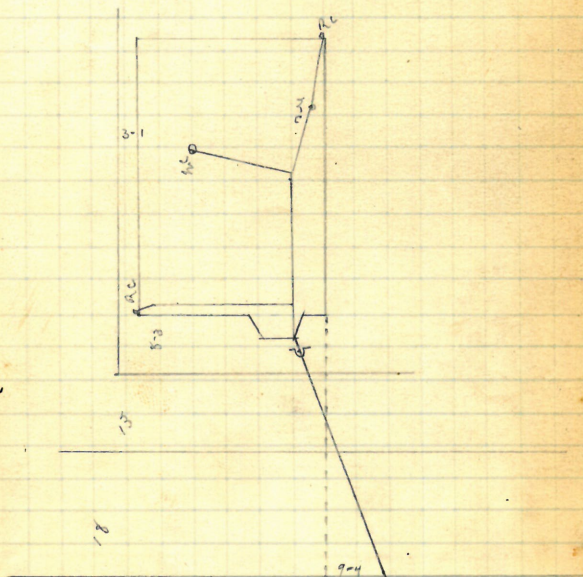
Closed V. 11^o 10th 1898

P. Tierney D. L. Chasout & Relay with Grain

cut at cut 10-4

Pipes 5 in

Plotted.



Entered Simon 107-3 West of 1st
M.L. West of Taylor St }

R.
July 30/91

18 ✓

July 11/91

Elizabeth A. Shepard
 V-R-Bradley St 39 Albany St

Permit # 6212

Opened Aug 20 1891

cut at curb 10.7

Closed " 22 "

Pipes 5"

Re Opened Nov 12. 191 to clear J.F. Road db.

Reopened Jan 4/93, to add w.c.

Closed " 5 "

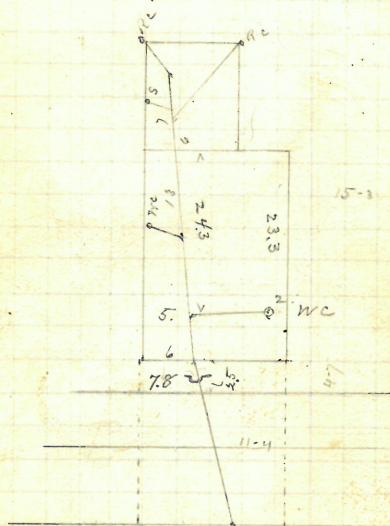
J. Phillips & Co. D.L.

Reopened Sept. 26, 98 - Relay

Closed " 29, 98 - J.F. Road D.L.

Plotted

6" front sewer from 4" inside of house



Along St

Entered sewer 83-6 North of 2nd
 on N. North of meander st. TR 000-20-

91

July 13³/₉₁

John Casey & Wife

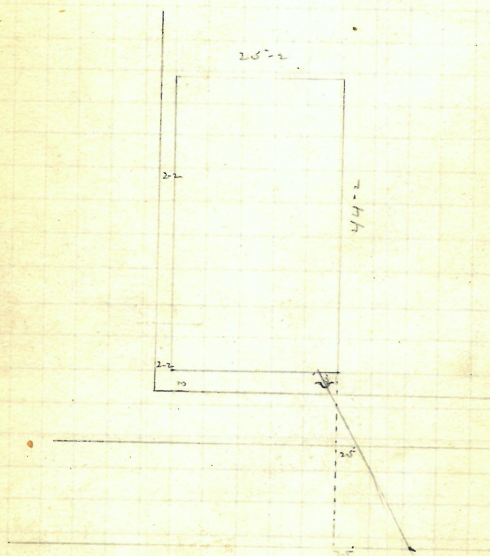
John Keogh, St.

293 + 295 Manton Ave

opened Aug 5th 1891

closed Aug 6. 1891

Permit # 6214

cut at curb 10-2
Pipes 5-PlottedEntered since 84-4 north of
In. h. at Stern St

R. Aug 10 1891

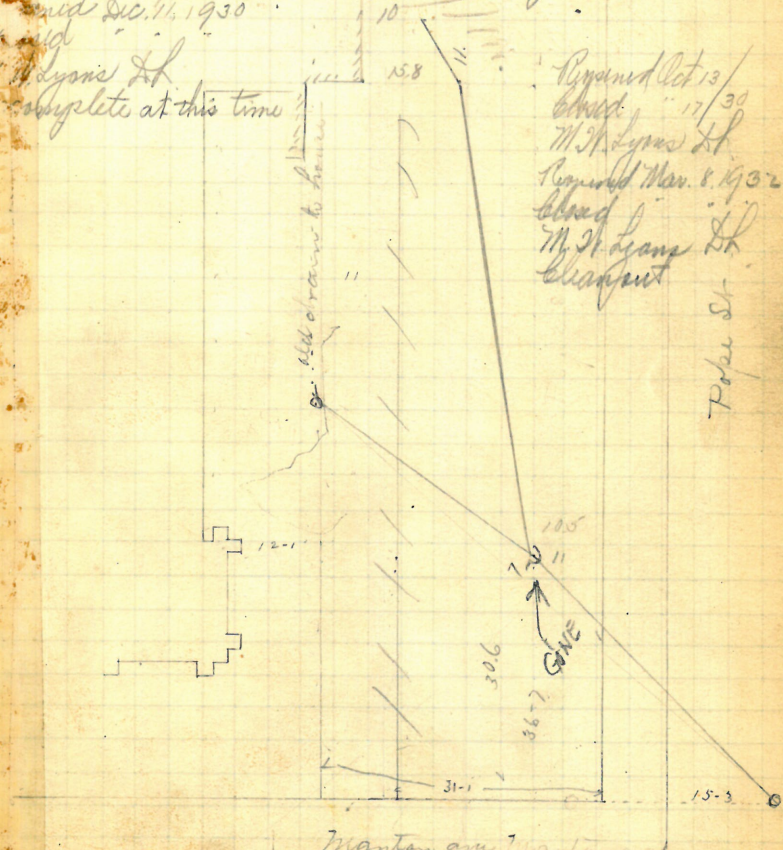
July 21
13
91

St. Teresa Church Lagoon,
275 P. Manton ave,
N.E. cor Pope St.

John Keogh Jr. Permit # 6215.

Opened July 31st 1931
closed Aug 4th 1931
Reopened May 7 1936
closed " 18 1936
J. McCallum & Blomquist
opened Dec. 11, 1930
to dig
M. Lyons Lk.
complete at this time

cut at cut 9
Pipes 6"
Reopened Mar. 11, 1931
closed " 12 "
Plotted J. C. Korman Lk.



Reopened Oct 13 /
closed " 17 / 30
M. Lyons Lk.
Reopened Mar. 8, 1932
closed " "
M. Lyons Lk.
Chapman

Pope St

Extend sewer at north in Pope St. near
Manton ave

22 VV

July 13/91

St. Teresa Church Corp.
Schoolhouse

209? Manton ave,
E. cor Pope str.

H. R. Chadsey, B.L. Permit # 6216.
Enters NE cor. of building.

Opened July 15, 1891

Closed " 23rd 1891

Reopened July 11, 1917

Closed " 15, 1919

W. A. Walsh B.L.

cut at curb 10-8

Pipes 6"

Reopened Aug. 8-1917

Closed " 11, 1917

W. A. Walsh B.L.



Reopened Aug 18 1948
Closed Aug 18 1948
old minerals O. Gordon B.L.

Enters sewer 98.8 ft. N. of
1st. int. N. of 1st. str.

R Sept 12 1891

✓ July 23
13/91

Elizabeth McNaughton

V.R. Chadsby Jr #60

Planty St.

Permit # 6217

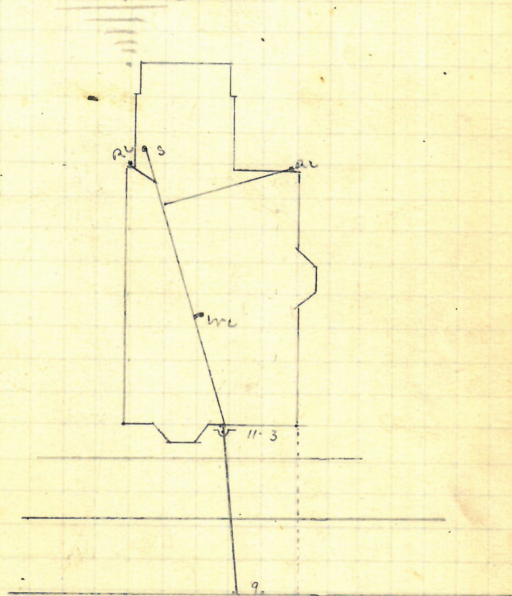
Opened July 24, 1891

closed " 25, 1891

cut at cut 10-2

Pipes 5"

Plotted



Enters sewer 52.8 ft. W.
of 5th m. W. of Broad St. Rang 13 1891

24 ✓

GONE

July 13/91

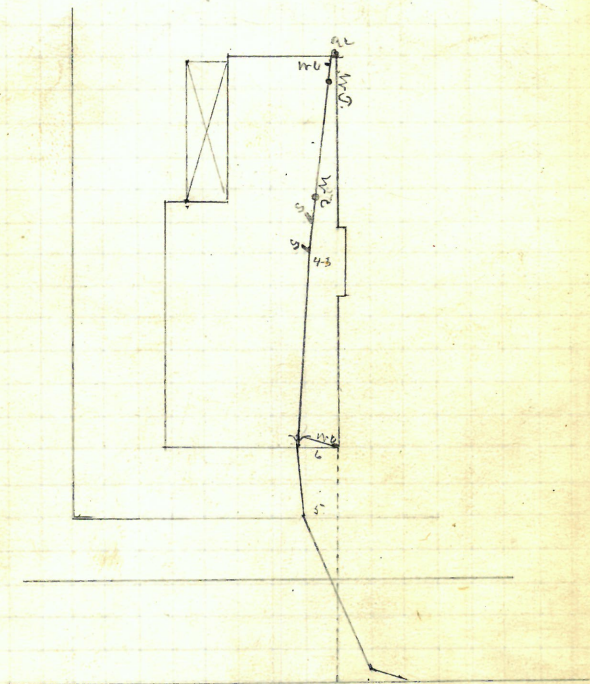
Est. Saml. by Allen, 2^d
 7 Parkis ave.
 B. Brady H.L. Permit # 6218.

Opened July 18. 1891

closed July 22. 1891

cut at emb 10-5
Pipes 5"

Plotted.



Entered River 7-1 back of 2nd
 in h. back of Broad Ch

R. July 30/91

150 Point St.

July 25
14
91

Hins Lydia Davis

Old #57 140 Point St.
Wm G. Vogg, D. S. S. W. Parsons St.
Permit # 6219

Spined July 15, 1891.

Closed

Reopened July 17, 94 5" pipes.
Cut at curb, 7-9

Closed July 19, 94 } Edward W. Kenney D. S. S.
Pipe relaid no change

Reopened Aug. 7-1903

Closed " 8-1903

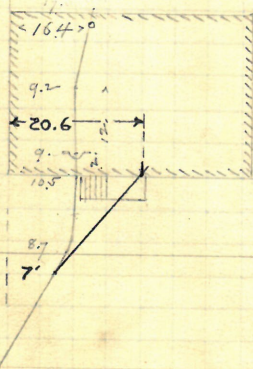
J. F. White D. S. S. - Plotted

Opened 11-2002 } Repair

Closed 11-2002 }

Armando Ricci #1 Permit #48822

Parsonage St.



Point St.

Entire sewer 43.1 ft. W. S.
S. W. E. of Parsonage St.

R. July 29/91

26 ✓

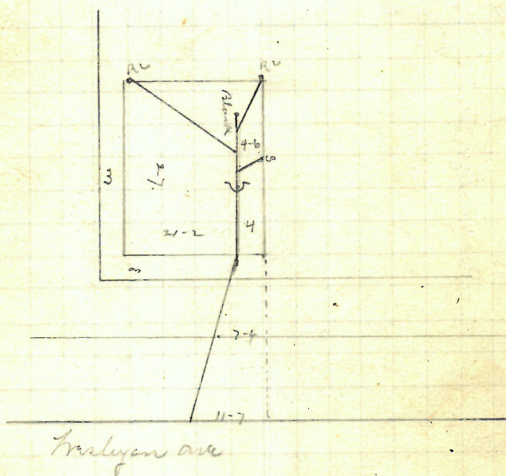
July 15/91

Wm D. Davis
 #98 Wesleyan ave.
 Henry R. Chadsey, D.L. Permit # 6220.

opened July 16, 1891
 closed July 20, 1891

cut at curb 10'-5"
 Pipes 5"

Plotted



Entered Ditch 702-5' West of
 5th St. West of Broad St. Range 12 1891

vuv July 27
15
91

Providence Society of New Jerusalem.

#1, Linden St.,

N. Cor. Hayward St.

M. Brady D.L.

Permit # 6221.

Opened July 22, 1891.

Aug 24, 191

cut at curb 9.

Pipes 5"

Reopened Oct. 15-1912

Closed 11 16-1912

J. E. Manning D.L.

Reopened - 8/9/37

Closed - 8/11/37

W. Keach add R.C.s

See return of permit #

#17791 of Aug. 9, 1937

6/10/38 Reopening Aug 10/38

Closed Aug 10/38

W. E. Keach D.L.

add R.C. at Gate Valve

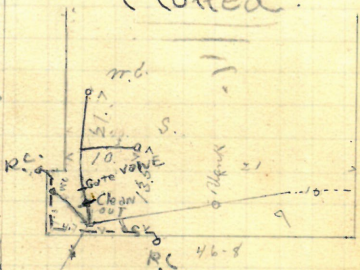
8. Reopened - Aug 7, 1939

5. Closed - Aug 8, 1939

M. Mally Ch. of side

Linden St

Plotted.

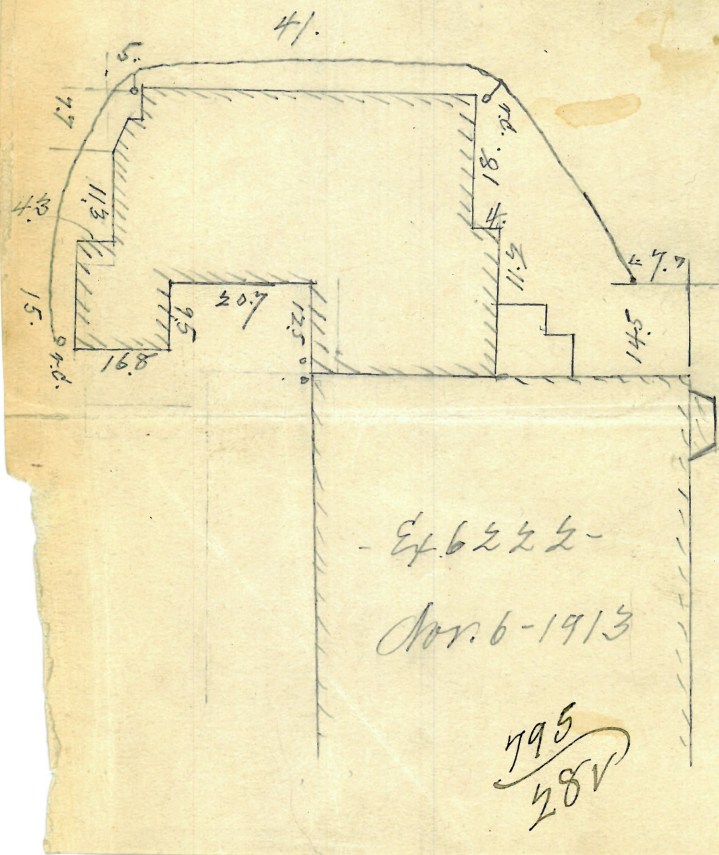


Hayward St

Hayward St

Entire sewer in Linden St.
at m.h. near Hayward St.

R.
July 30/91



Enters sewer 20.4 ft. W. of
W. siding line of Thayer St.

30 ^{✓✓}

July 17/91

Susan W. Read,
20+30 Arnold St.

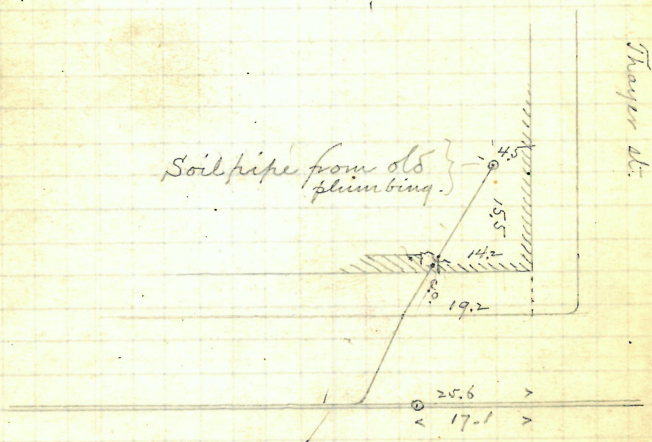
Hiram S. Read D.L. S.S. Cor. of Thayer #12

Permit # 6224

Opened July 20, 1891.

Closed " 25, " (in st.)

" " 28 "

Cut at curb, 6" high
11.5-PlottedEnter sewer 100.3 ft. W.
of 2nd int. E. of Thayer St.

R. Aug. 31/91.

July 20/91 31

Benno Half #6 Pearl St
B. Brady Dr.

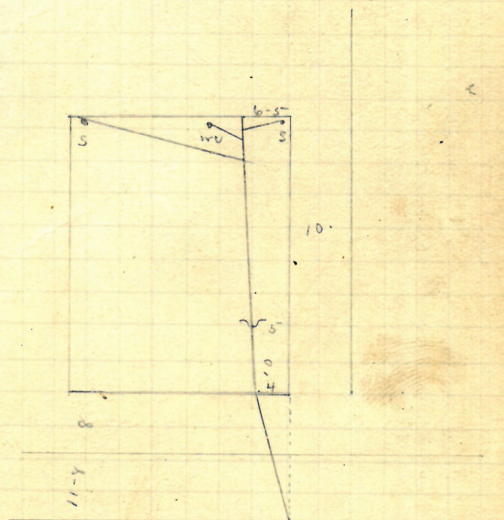
Permit 6225

opened July 23 1891

closed July 25. 1891

cut at curb 10-5
Pipes 6 in

Plotted



Entered Sewer 43.5 north of
1st mile north of Bond St

R. July 30/91

VV

July 21
91

Amanda M. F. Brayton,

#142? Olney st., N.W. cor. East ave.
John W. Finlong St. Permit #6226.

Opened July 21, 1891.

Closed " 31 " (in st.)

" Aug. 14 "

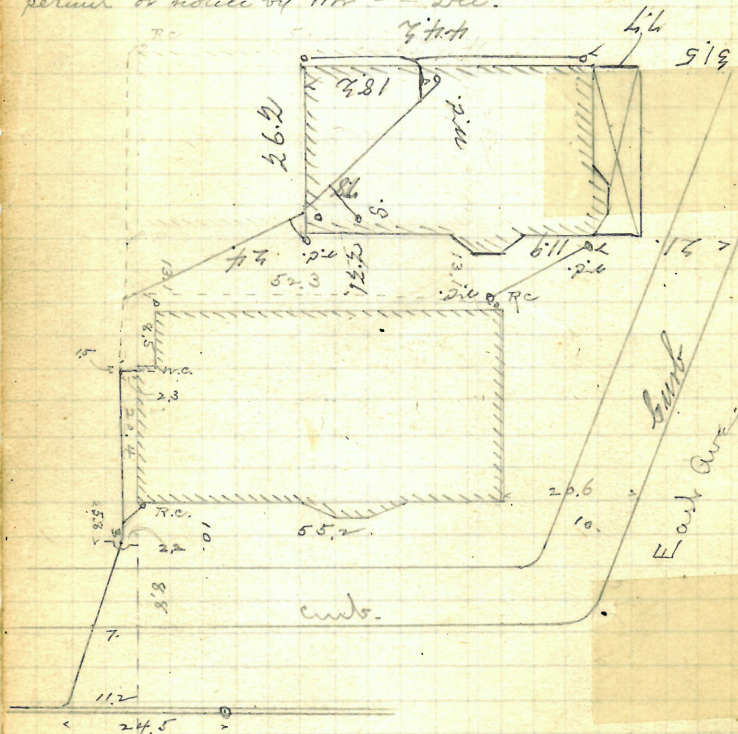
Reopened May 20 - 1913

Closed " 22 - 1913

J. A. Perry D. L.

Cut at curb, as reported
by T. McMath, 10.3Work on dotted lines laid without
permit or notice by Mr. - Lee.

Plotted

Enters sewer 75.5 ft. E. of
7th m. n. E. of Camp St.R. Sept. 30
91

✓ June 22/91 33

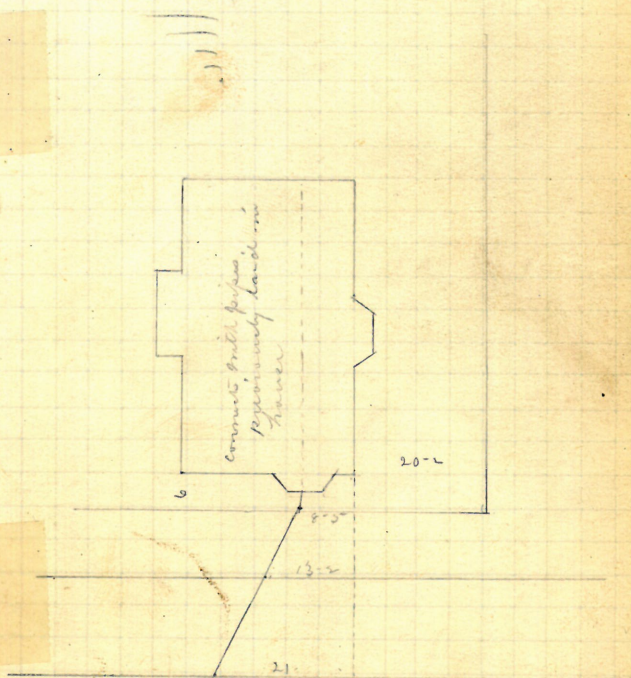
Alfred A. Harrington & Wife,
12 Sycamore St.
16 new no.

J. D. Blackman, D.L. Permit # 6227.

Opened July 23, 1891.
closed " 27, 1891

curb cut 10-
Pipes 6"

Plotted



Entered sewer 10.3 ft. S.
of 2nd and 3rd S. of High St. R. aug 10 1891

Seander to Belcher

39-41 #17 West Clifford St
 52 Brady St

Permit 6328

Opened Aug 4, 1891

closed " 4, "

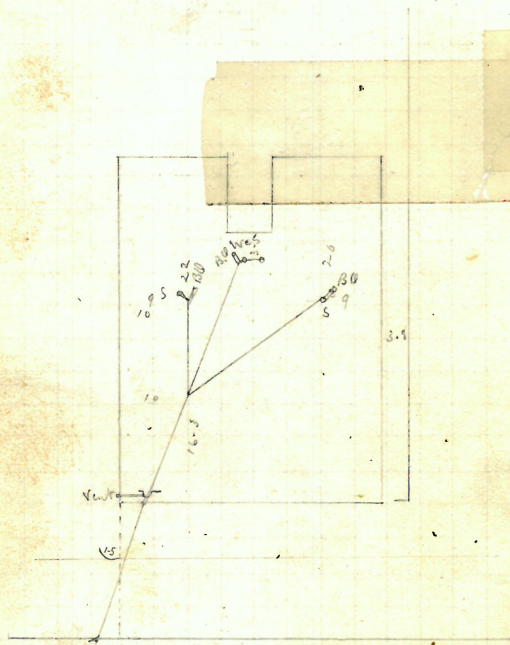
Reopened Jan 5, 1939

1/4 closed Jan 5, 1939

H. Grotto Cl. - open sides.

cut ab cut 10-2

Pipes 5-



Entered Surr 100-9. East of M. h.
 9-5 West of West cut line of Backwood St

R. Super. H. 11/11

July 27/91

Mary Ann McLaughlin

381

~~299~~ Atwell's ave.

B. Brady & L.

Permit # 6230.

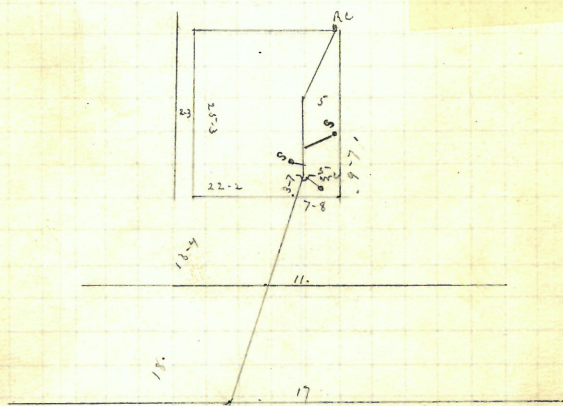
Opened July 28-1891

closed " 30. 1891

cut at curb 9-10

Pipes 5" m

Plotted



Entered sewer 6-8 East of 1st
 in E. West of Union St

R. Sept 4. 1891.

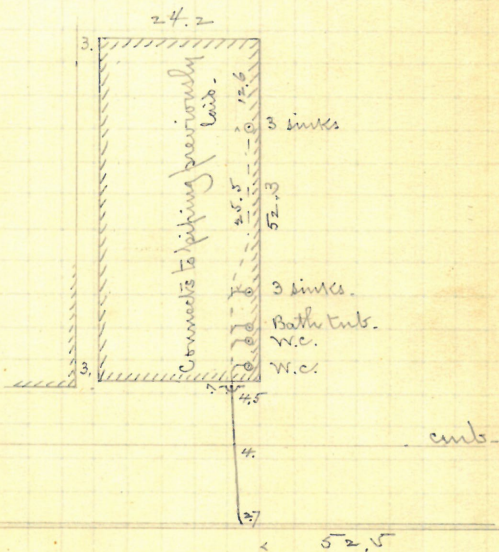
37

Opened, July 29, 1891.
Closed " 30 " "

Closed " 30, "

Cub ab cub, 7.5 - 5" pipes

Plotted



Entered seven 55.2 f. W.
of 2d m. W. of Thayer St.

38 ✓

GONE

July 28
94

V. R. Chassey Dr. *Harriet S. Bond*
62 Plenty St.

Opened July 30, 1891

Closed Aug 1st 1891

Reopened May 21, 99

Closed " 31, 99

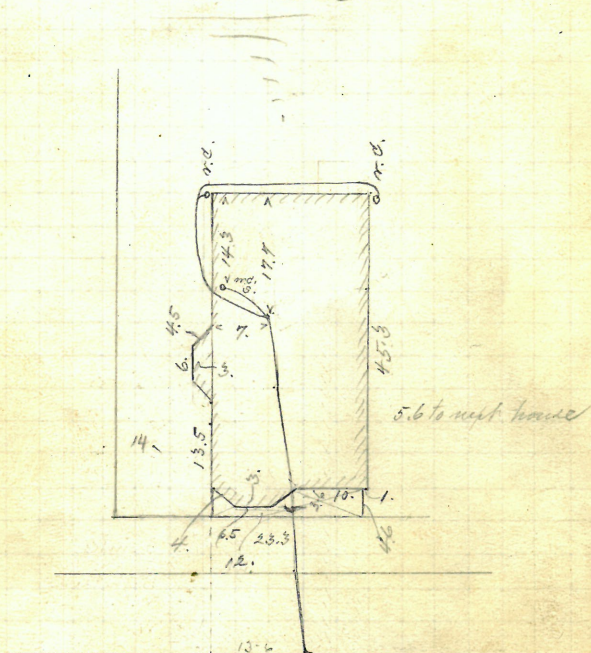
J. Nolan D. L.

Permit 6232

Cut at cut 10-5

Bipar 5 in

Plotted



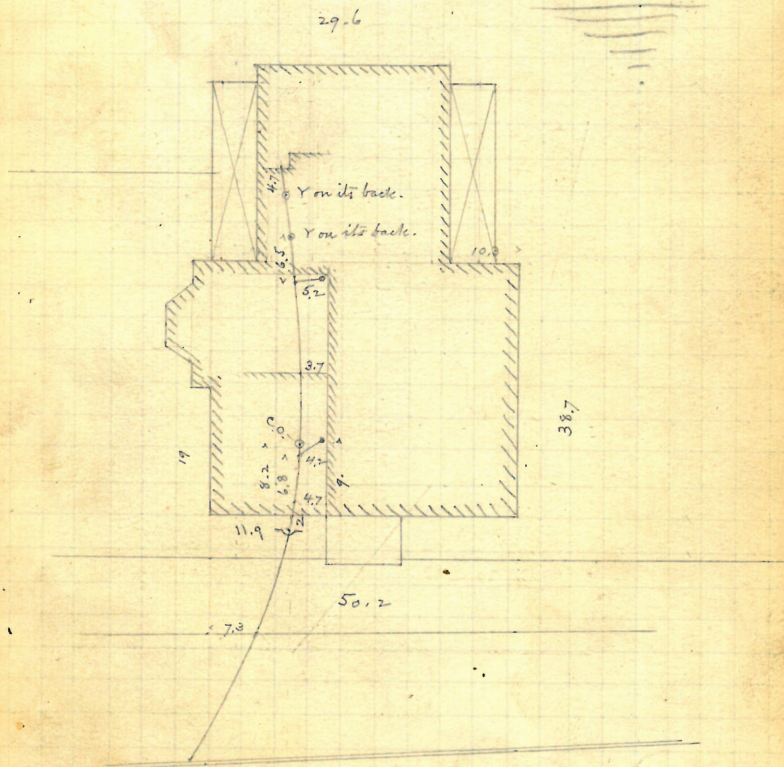
Entire to Sun 7-4 West of
5th M. h West of Parad. St

R Oct 23rd 1891

✓ July 30 39
91

6" pipes.
Cost at cost, 14.0

Plotted.



Esters sewer 25.9 ft. N.
of 2d m. N. of Jenkins St.

R. Sept. 21/91

July 31 / 91

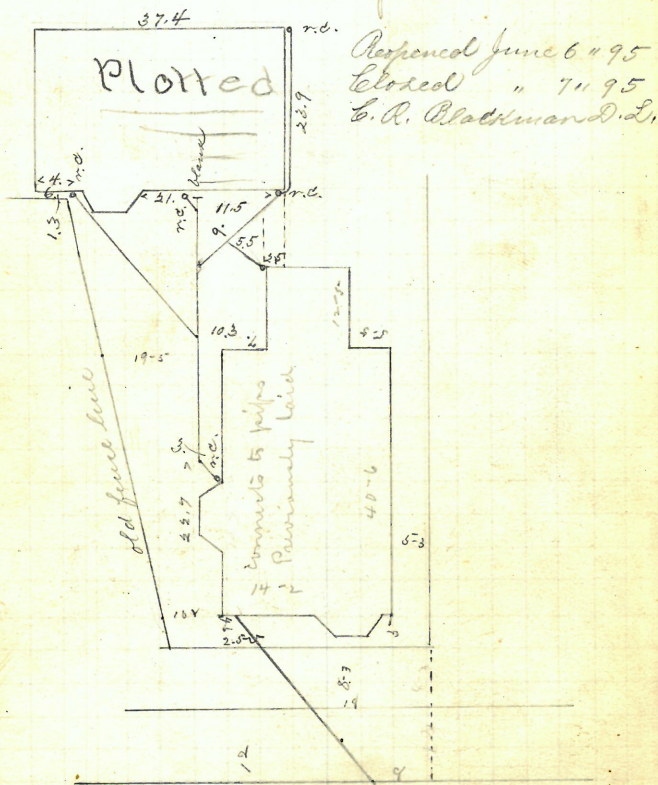
Catherine R. Haskins St.
 #47-49
 J. A. Blackman, D.L. - Permit # 6234

Opened Aug 1st 1891

closed " 3rd 1891

cut at curb 10-2

Pipes 6 in



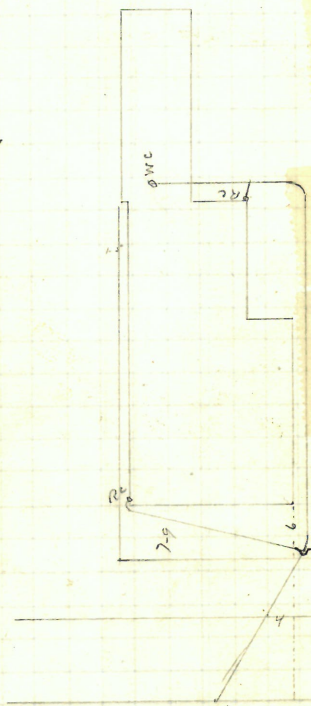
Extend Survey 147 - north of 3rd
 north South of Broad St.

R Aug 10 1891

42 ✓

REMOVEDJuly 31
91

Rudolph Hauke
194 Lifford St.
H.R. Chadsey, Sr. Permit # 6236.

Plotted.

Lifford St

Entered Survey 42-6 Wash of
3rd m h East of Plain Rd R. Sep 12, 1891

July 43
31
9

Hough, Leavell + Wife
#20.

20

#152

Comstock ave

J. A. Blackman D.L.

Permit # 6237

Observed Aug 3rd 1891

church

1891

cut at cut, 9-8

OPENED 8/29/77 INSIDE

Pipes 5-5

CLOSED 8/29/77 INSIDE

D.L.D. ELLIS

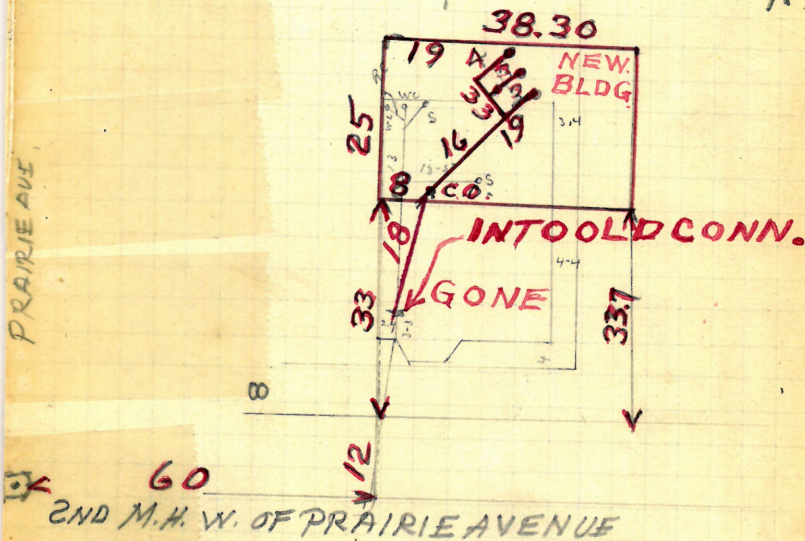
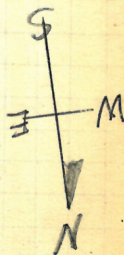
NEW BUILDING

3" & 4" PLASTIC

4" V.C. INTO ~~Plotted~~

OLD CONN.

11/3/1977 OUTSIDE



2ND M.H. W. OF PRAIRIE AVENUE

#20 Bonstock ave

Entered Survey 60 - West of
2nd M. h. West of Prairie Dr. R. Aug 10 1891

44

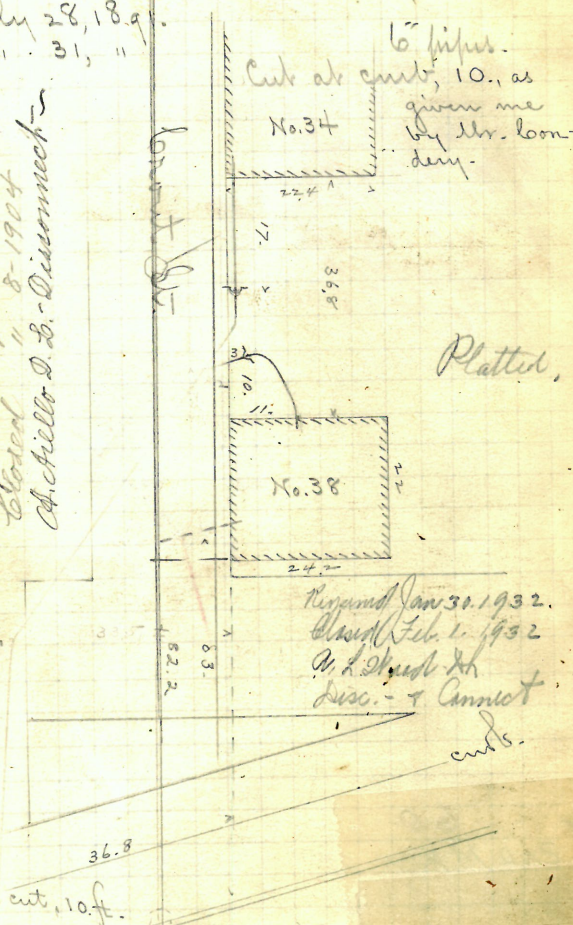
July 31/91

City of Providence,
 #34-38 Crouse St. into W. Exchange St.
 Allen Aldrich, Jr. Permit #6238.

Opened, July 28, 1891.
 Closed, " 31, "

This diagram was done with
 to me, and this diagram
 on information given me later by Mr.
 Condon. C.H.P.

Proposed Apr 6-1891
 Closed " 8-1904
 Ch.ello D. E. Dismore



Revised Jan 30, 1932.
 Closed Feb. 1, 1932
 W. L. Shedd Jr.
 Desc. - & Annex
 curb.

82.2 South of manhole located in centre of West Exchange St. & nearly on line of centre of Crouse St.
 Enter sewer 110 ft. E. of 1st manhole.
 E. of Dismore St.

R. Aug. 17 '91.

Aug 3. 1901

Jennings. O. McCann
 61 2nd Sutton St
 S.E. Cor. Atwell Ave

B. Brady St.

Permit 6240

Opened Aug 5 1891

Closed " 07 " "

Reopened Sept 7-1906

Closed " 8-1906

J. Capaldi D. L.

Reopened Oct 4-1906

Closed " 20-1906

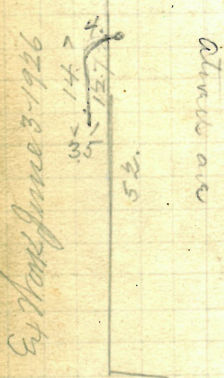
V. Camiglietti D. L.

cut at curb 10-

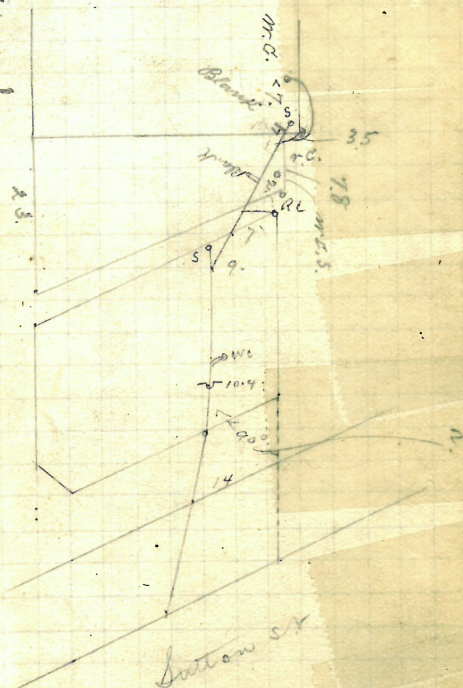
Pipes 6"

Plotted

Cut June 3-1926



Street Avenue



Reopened May 18-1926

Closed " 18-1926

D. Ciancio D. L.

Entered Survey 44 South of
 12 m. h. South of Atwell Ave

R Sep 4th 1891

✓ Aug. 47
91

73-75

~~34~~ a 34½ Dodge str.

Opened Sept 2nd 1891

cut at curb 10-4

Cloud 4

Piper 65

6, Reopened - June 6, 1939

Recd apr 22 1947 4/21/

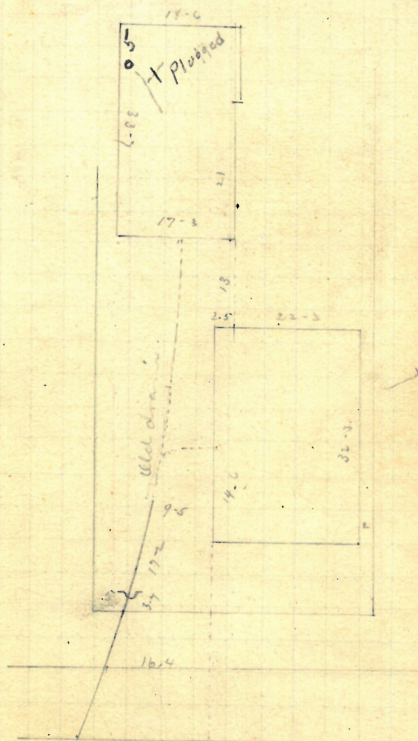
16 Closed. June 8, 1939

Clo apr 22 1947 11/21/47

R.A. Keyes - Cl. - of sides.

add W.C. a. Springer D.S.

Plotted



Extend Series 52 ft North of 3rd
1/2 mi North of Cranston St

R Oct-9. 1891

✓ Aug. 4 / 91

Atlantic Hills

#14

Florence St

Mr. Lohney Dr.

Permit #6243

opened Aug 11 1891

cut at curb 9-5-

closed

14. 1891

Pipes 6"

Reopened & closed Apr 6-7-1900

H. M. Goldrick D. L.

Reopened July 13-1925

Reopened Nov 15. 1934

closed 11/14/1925

closed Nov 15. 1934

M. Leonard, L. C. Cramack

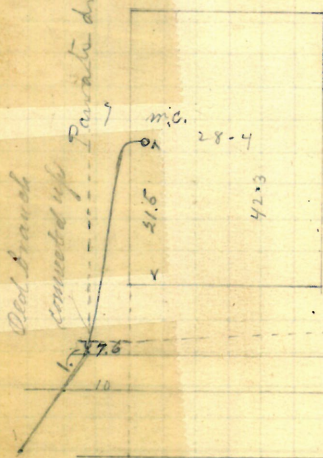
McNally - clear

Reopened Nov. 26, 1937

closed Nov. 26, 1937

M. McNally - Cl. of sides.

Plotted



Enters sewer 102.5 N. R Sept 29. 1891
of m.h. at Manton ave.

50

Charles A. Mann,

H.R. Chadsey, D.L.

#160 134? Doyle Ave.

Opened Sept. 30, 1891.

Closed Oct. 15, "

Permit # 6244

6" pipes



Cut at curb, 10-1

2 Respined - Feb. 9, 1937

Closed - Feb. 9, 1937

L. Hindle - add 2.3 - abo

Reo May 29 1946 5/24/46

Clo May 29 1946

add acid line & Hindle 2.3

Reo 5/18/64 Closed 5/18/64

D.L. N. Fortier (call above.)

Plotted.

8.8.

cut.

Enters sewer 87.0 ft. E.
of 3 d. m. h. W. of East Ave.R. Dec. 10
91.

52 GROVE ST 168
BROADWAY 162

Robert Grayton

H.R. Chadsey

Opened Oct 8 1894
Closed " 12 1897
Cut of curb 10-4
Pipes 5"

Permit 6246

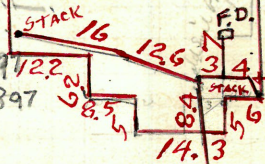
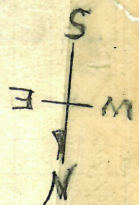
OPENED 3/18/74
CLOSED 3/18/74
D.L. DANIEL CELLUCCI
NEW BUILDING
INTO OLD CONN.

Part Plotted

Grove St

Enters Sewer in Grove St. 151-2 West of
Mk. at Albany St.

Sept. 29/91



54.9

34.40

11.2

14.8

5.3

9.8

Rev 11/72

#3 Florence str.

E. box #177 Manton Ave

Reopened June 1926

closed 11-2-1946

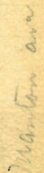
E. Gibbons Esq. - Cleamont.

Reopened - Oct 23, 1939

Closed - Oct 23, 1939

M. McNally - Clear

17



R. Jan 8. / 92

✓ Aug. 5/91 55

Silas H. Manchester

60 ~~105~~ Vinton St.

H.R. Chadsey Dr. Permit # 6249.

Opened Aug 10 - 1891

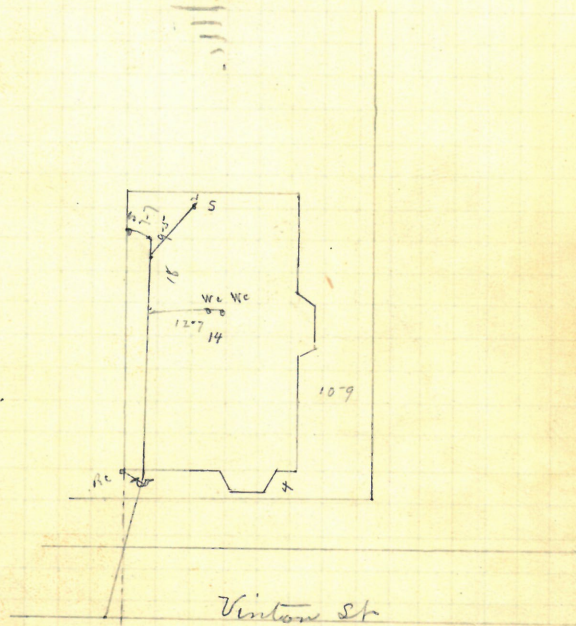
Closed " 11. 1891 cut at cut 10-8

Reopened Aug. 12 - 1901

Pipes 5"

H.R. Chadsey & Co. - Cleanout

Plotted.



Entered Sewer 47-2 South of
2nd inch north of Penn St - R Oct 9, 1891

56 ✓

163?

Thomas Walsh

95-97 Almy St

J. A. Blackman D.L.

Permit 6250

Opened Aug 6. 1891

Closed " 8. 1891

cut at curb 10-2

Reopened May " 1892

Pipes 6 in

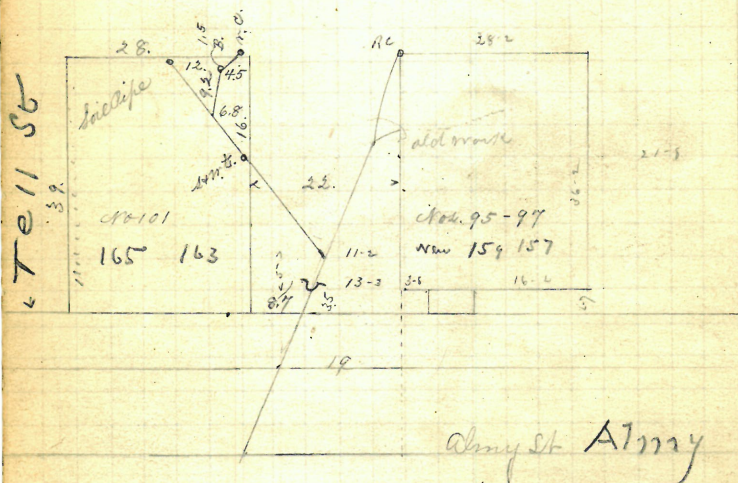
Closed May " 1893

T. Walsh D.L. (work done under Blackman's Permit)

Reopened Jan 9. 1933

Closed Jan 9. 1933

P. Call. Obs. clear Plotted

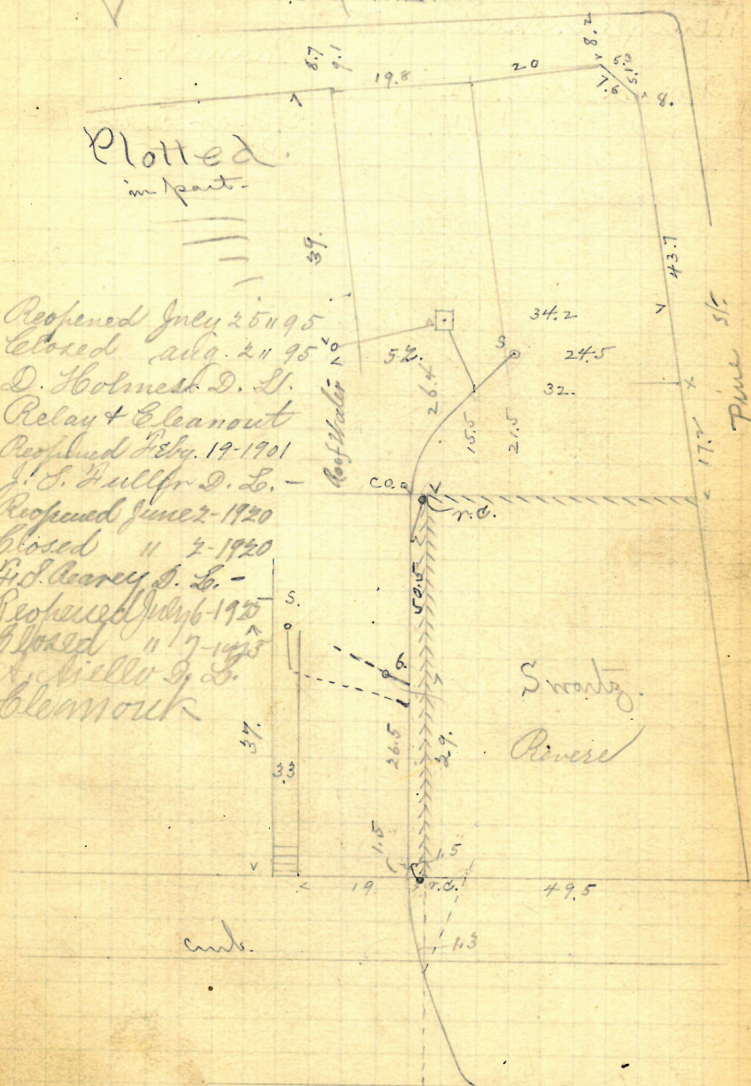
Extend Survey 67. South of
m.h. at Teill St

R Sep 29. 1891

Patrick Moroney
Henry R. Chadsey D.L.

Plotted
in part.

Reopened July 25 1905
Closed Aug. 21 95
D. Holmest D. L.
Relay + Cleanout
Reopened Feb. 19 1901
J. S. Bullfr D. L. -
Reopened June 2 1920
Closed " 2-1920
F. D. Kearney D. L. -
Reopened July 6 1920
Closed " 7-1920
J. S. Bullfr D. L.
Cleanout



Ext. near 51.6 ft. W. of m. h.: at Pine St. R. Oct 1/91
Originally a part of drainage shown on N.B. 113, p. 34.

58✓

$$\frac{163}{4}$$

Aug-7/91

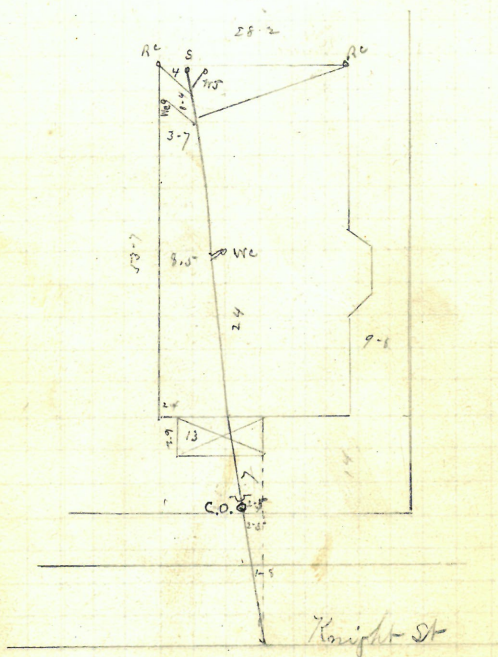
Emma B. Wolf wife of Berno.
266-268 ~~at~~ Knight St.

Henry R. Shadsky DL Permit # 6252

Opened Aug. 12 - 1891
closed " 14.

cut at curb 10-5-
Pipes 5-

5 Reopened May 27, 1943
27 Closed May 28, 1943
J. Mangione - Cl. - add. c.o.



Entral Sewer 65-2 north of 2-4
in h north of Carpenter St R Sept 12-1891

James Moan

301. Manton Ave
E. cor Stuben St

John Kergh St.

Permit 6253.

Opened Aug 10, 1891.

Closed " 15, 1891

cut at curb 10-5

Reopened Aug. 4, 98

Pipes 5"

Closed " 5, 98

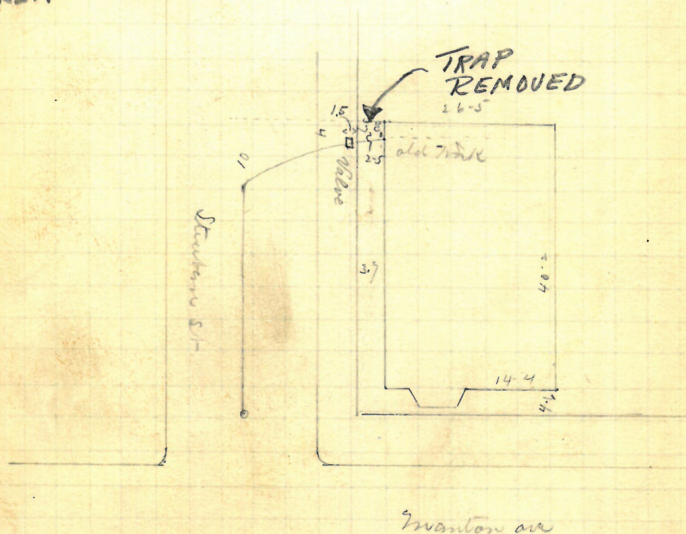
Geo. F. Lewis S. L.

REQ 1-30-75

CLO. 1-30-75

D.L. A. RICCI #2

REMOVE TRAP

P. 161
42

Intend sewer in Manton Ave
through m. h. in Stuben St. Oct 23 1891

Aug-10/91

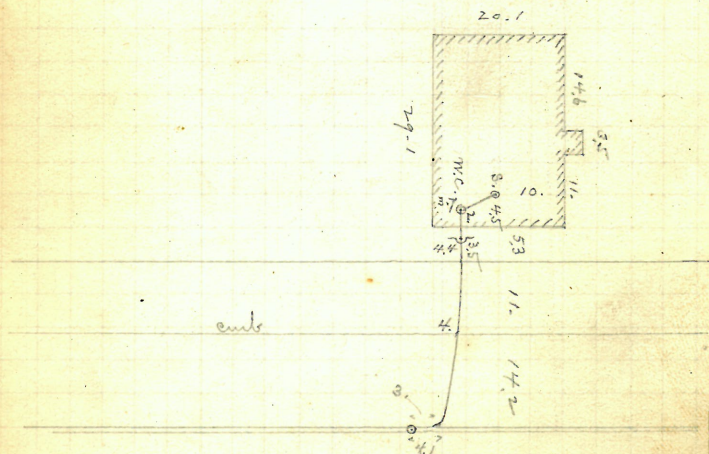
Rhode Island Hospital
 # 48? Lockwood st.
 H.P. Barney, M.D.

Permit # 6254.

Opened Aug-11/91.
 Closed " 15/91.

5" pipes
 cut at curb, 9.4

Plotted



Enters sewer 4.1 ft W. of
 1st m.m. W. of May st.

R. Aug. 17, 91

Aug 61
-11/91.

Edmond Walley
646-650 main number ~~HTT~~ Wickenden St.
B.R. Brady S.

Permit # 10255.

Opened Aug. 12, 1891.

Closed " 13 " (in str.)

" " 14 "

Reopened Apr. 13-15, 1893.

12 Reopened 12/3/92

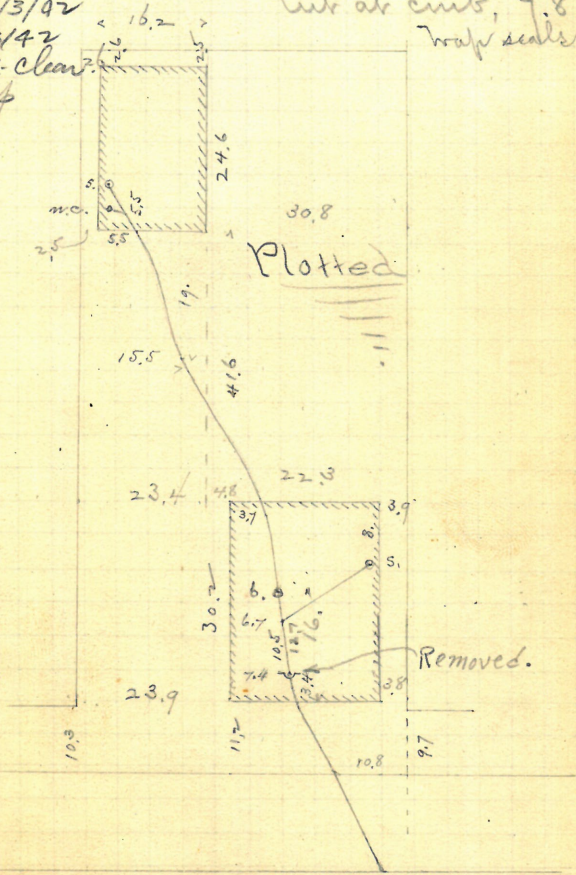
3 Closed 12/3/92

G. Riccitelli clear?

Remove trap

5" pipes.
Cut at curb, 7.8 -

Trap scale 2 1/2".



Entire sewer 7.3 ft. W.
of 2" m.r. W. of Evans St.

R. Aug. 31/91.

Aug. 11/91

A. Duncan and Wife Estate
and children65? West blifford str.
B. Brady D.L.

Permit # 6256.

Opened Aug 18-1891.

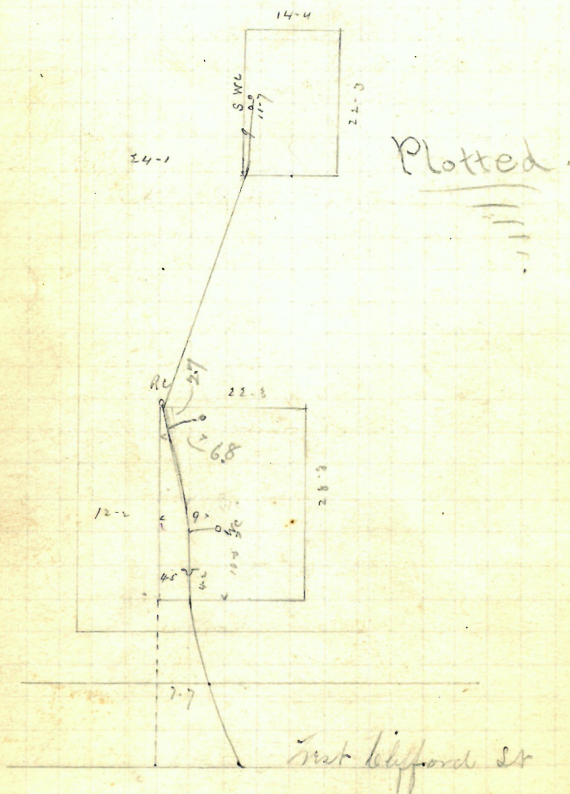
cut at cut 10

Closed 19.

Pipes 5"

Reopened Aug. 26-1909

Closed 11/26-1909

Entered Survey 56-5 South of
N. H. at Corner of St. R. Sept 4, 1891

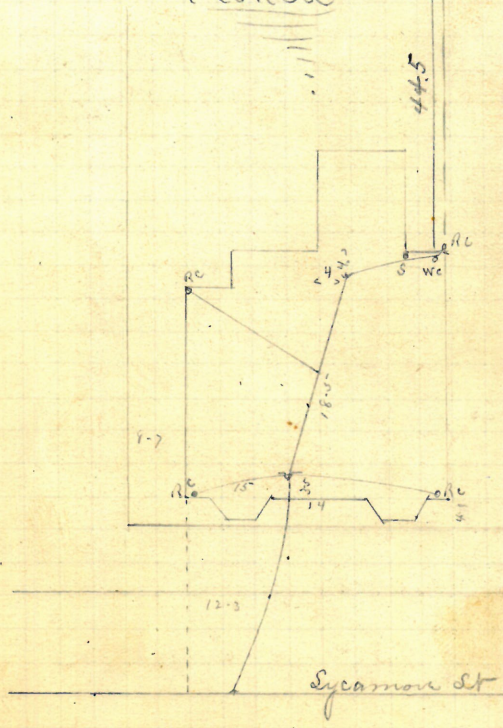
✓ Aug 63
 11
 91.

Erving W. Tourtellor,
 R Brady St. ²⁶ Sycamore St.
 Permit #6257.

Opened Aug 20 1891
 Closed " 122 "
 Resumed Apr 27-1911
 Closed May 2-1911
 L. Prudon D. L. ~

cut at cut 10-2
 Pipes 5" 11-2
 16. 10.7
 29. 21.

Plotted.



Entered Sewer 2-5 South of
 1st on h. South of Oak St. R Oct 9, 1891

64 ✓

Aug-12/91

John Linhard, Jr. Trustee of
 Catherine Linhard,
 55 Sutton St.,

P. Brady, D.L.

Permit #6258-

Opened Aug 14, 1891

Closed " 18.

Reopened June 23-1915

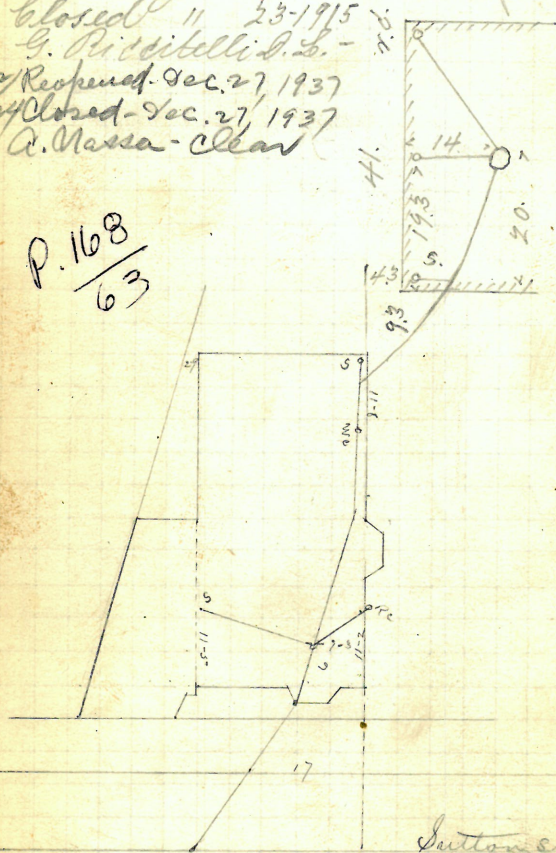
Closed " 23-1915

G. Pittelli S.L.

12 Reopened Dec. 27, 1937

24 Closed - Dec. 27, 1937

A. Massa - Clear

cut at curb 10-
Pipes 5P. 168
63

Entered Sewer 108-1 South of R. Sep 4, 1891
 12' N. South of Avenue Ave

Aug. 13. 65

Patrick Sullivan

213 Wade St.

J. A. Blackman, D.L. Permit # 6259-

Opened Aug. 13, 1891.

Closed " 15, 1891.

Reopened June 4, 1917

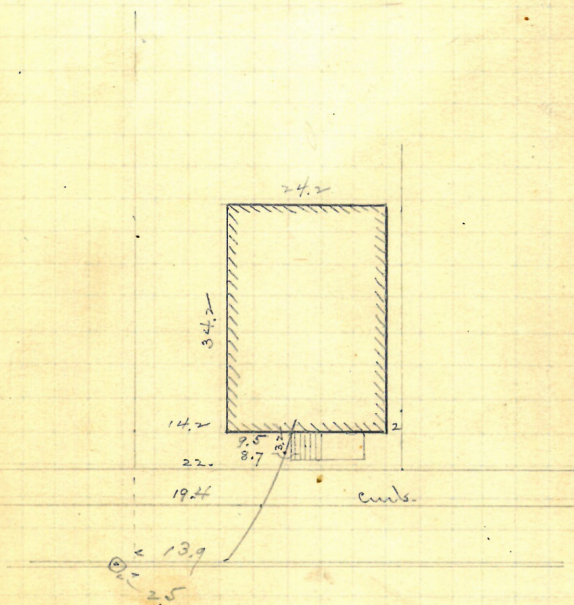
Closed " 1917

M. J. M. Cornick S.S.

Cleanout

5" pipes
Cut at ends, 10.5

Plotted.



Enters sewer 16.4 ft. N.
of 1st m.m. N. of Tockmottan st.

R. Sept. 21
91

Aug. 13.

Frank P. Lyones
 #119? Toek Rotten st.
 J. A. Blackman St. Permit # 6260.

Opened Aug. 14, 1891.

Closed " 17, "

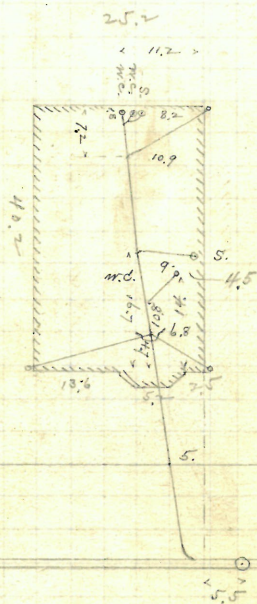
Reopened Mch 29-1901

Closed " 29-1901

D. M. & Bartholomew & Co.

5" pipes.
 Curb at curb, 10.5-

Plotted



Enters sewer 7. ft. E. of
 2d main E. of Parrott St.

R. Sept. 21
 91

68

68 P-162
OWNER CLARENCE RUSS
24 COMSTOCK AVENUE

P-162

Aug-13

Estate James Bonington

B. Brady D.L.

Opened Aug 19. 1891 85 - 101 at curb 9-5.

Closed 20.

Reopened Aug. 9-1909

Closed Oct 2-1909

L. Deary D. L.

Reopened June 13/28

Closed June 13/28

A. Acciavolli D.L.

Remove traps

OPENED 9/19/77

CLOSED 9/19/77

D. L. D. ELLIS

3" & 4" P.V.C.

INSIDE V.C. 116
NEW BUILDING

NEW BUILDING
4" V.C. INT.

4 V.C. INTO
OLD CONN.

020 CONN.
11/3/1977

OUTSIDE

GONE

GONE

9.8 ^{5.75} 38.40

3 4 2 NEW
45 14 BLOG

1 2 3 STACK

PROPERTY LINE

oo. *hirsuta*

M.H.

3RD MH

W.O.F

W.O.F.
PRAIRIE AVENUE

24 COMSTOCK AVENUE

Internal Series 140 - West of R. Sept 14, 1904
2nd in line - on R. side of river

GONE

69
Aug. 13
91.

Charles Cohen

W. H. Cassidy, D.L. Permit # 6263

Opened,
Closed,

Reopened - July 27, 1934
Closed - July 27, 1934
Fisher's Change to iron

Prepared July 23, 1934
Closed July 23, 1934
P.W. Taft & Clear
Plotted

Angell

Old Common.
(Stone) Drain.

Permit #6265. (see p. 71)

Permit #6264. (Page 70.)

Permit # 6263.
(This p.)

391.

Permit # 6287.
(Page 93.)

Plotted

R. Oct. 12/91

GONE

Aug. 13

Charles Cohen, N. Main St.

P. H. Cassidy, D.L.

Permit # 6264.

Opened Oct. 1, 1891.

Closed " " "

" pipes

For diagram, see fr. 69.

Reopened Nov. 1-1906

Closed " 2-1906

N. H. Colgrave D. L. - Cleanout

R. Oct. 12/91.

GONE ^{Aug. 71}

Chas. Cohen,
P. H. Balsidy, D.L. No. Main st.
Opened Oct. 2, 1891. Permit # 6265.
Cloud " " " " pipes

For diagram, see fr. 69.

R. Oct. 12/91

72 v

Aug-14

~~Removed~~

Callender, McArthur + Trout loc.
#103-1617 Fountain St.

Ratke Turner, D.

W. Cor. Federal 5-8

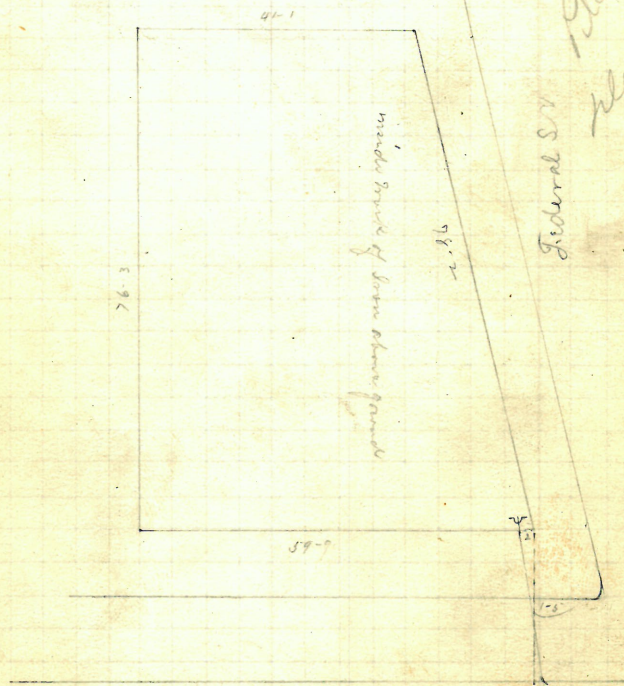
Permit # 6266.

above st. sewer.

See 24 Working under
old permit No. 17-1922
South to 7956g No. 73

No Plan

Plotted
plan 170
76



Fountain St

See: $\frac{170}{76}$

R.O. 28-1891

✓ Aug. 14. 73

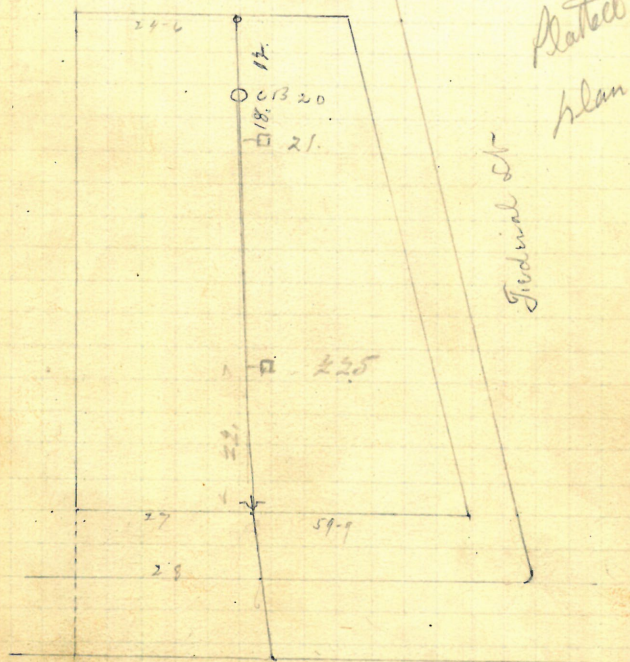
~~Removed~~

Callender McAnslan & Troup Co
#103-1617 Fountain St., N. cor. 2nd & 3rd St.
Covers at sewer

Patte Tierney St.

Permit # 626-
Rescued Apr. 24-1937
Closed " 30-1937
D. Holmes & Co. -

No Plan



Protect
plan 170
76

Gridiron St.

Fountain St.

See: 170
76

Recd. 23. 1891

✓ Aug. 15
71Franklin H. Richmond,
#28-30 Sabine St.,
Cove St. Sewer.

H.R. Chadsey Jr.

Permit # 6269

Opened Aug. 17, 1891 cut at curb 5 ft
Closed " 18, 1891 Pipes 6 in

Reopened Feb. 14, 1893 13 1/2" Brady to extend to old drain

Reopened Aug. 12, 1893 } to connect with new 12" pipe
Closed Aug. 18, 1893 } G.R. Herman D.I. sewer

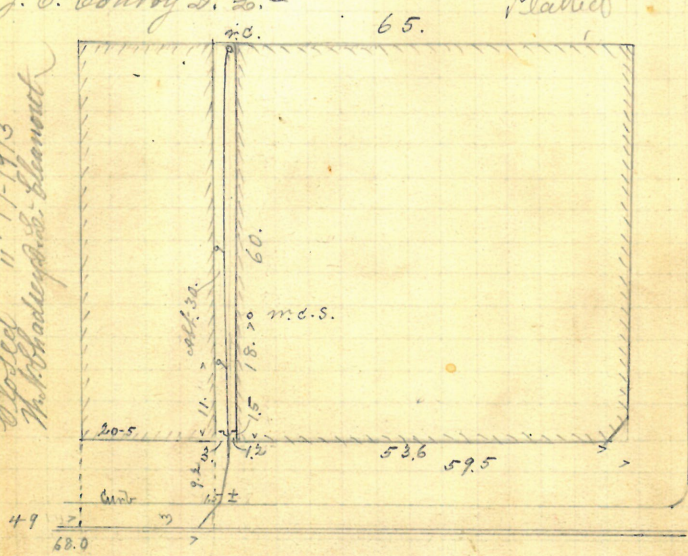
Reopened Aug. 8-1900

Closed " 9-1900

J. C. Courroy D. E. -

No Plan

Platted

Reopened July 16-1913
Closed " 17, 1913
H.R. Chadsey Jr. - Element

Sabin Street

Reopened - June 29, 1933

Closed - June 30, 1933

J. Capaldi plug at curb.

R. Sept. 12, 1891

Entered Stone drain in Sabine St.
1st East of West Side of Building

76 ✓

Aug 18/91

Francis Snowbridge,
#372 ✓ ~~192~~ Broadway -
Fred. H. Read Dr. Permit # 6270

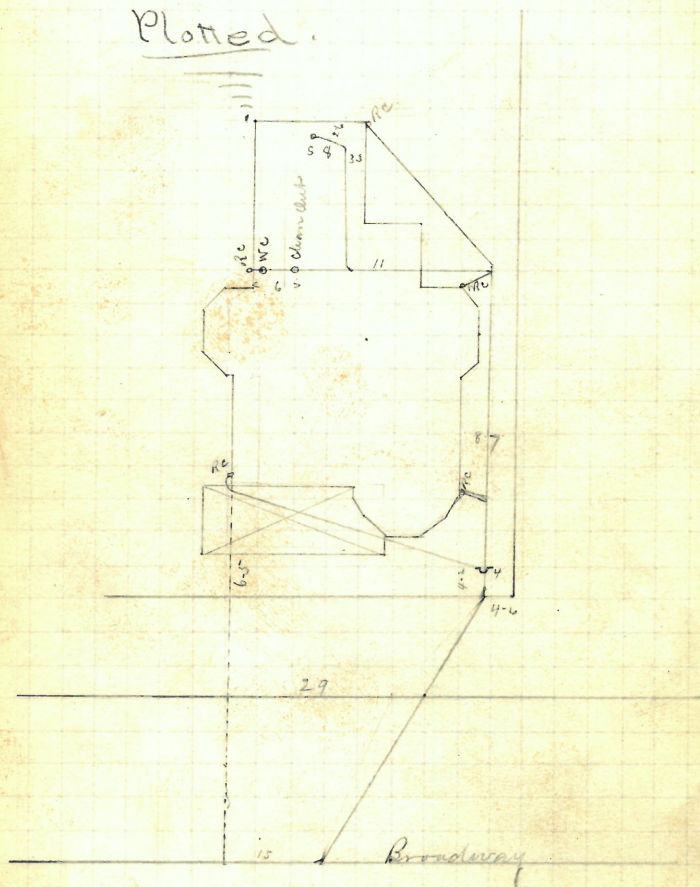
Observed Aug 19. 1891

cloud Sept 3. "

cut at emb 9-10

Pipes 6"

Plotted.



Entered Survey 61-3 West of 2nd
high West of Knight St

R Dec 11/91

✓ Aug 77
-18

Rosanna Linnerford,
new #34 ~~123~~ Vinton St.

H. R. Chadsey St.

Permit #6271.

Opened Aug 18 1891

Closed " 20 " cut at curb 10-8

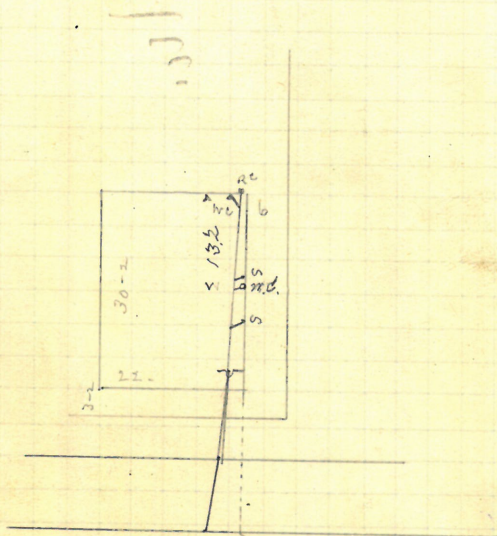
Reopened June 28-1915-

Pipes 5"

Closed " 28-1915-

C. C. Piccitelli D. S. -

Plotted.



Entered Survey 49-9, South of
1st N. h. South of Vinton St. R. Sept. 12, 1891

78. ✓

GONE

Aug 18/91

#242 John O'Brien
 #79 Dudley St.
 D.E. Barry & Co. Permit #6272.

Opened Aug 19, 1891

closed " 24. "

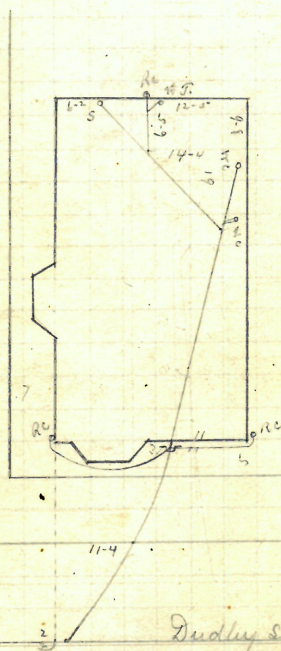
cut at curb 10-8

12/ Reopened - Jan. 2, 1891

Pipes to ~

16/ closed - Jan 2, 1891

L. Stomazis-cl-root.



Entered line 14-5 West of 2nd
 in hole of Prange ave.

R Sept 4, 1891

P- $\frac{158}{19}$

Aug. 79
19
91.

Sarah D. J. Bancroft,
139 Angell St.

H.R. Chadsey M.L.

Permit # 6273.

Opened Aug. 21, 1891.

Closed " 26, "

REOPENED OCT. 25, 1951 10/

CLOSED OCT 26, 1951 12/51

D.L. P. BALDWIN - ADD 1 LENGTH

5" pipes

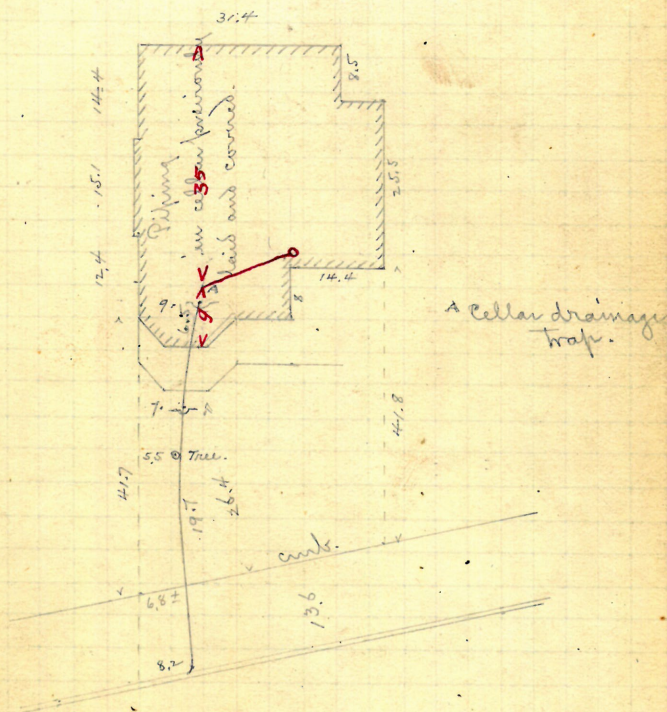
Cut at curb 10.2

Trap seal 24"

Opened 8/8/57

Closed 8/8/57

Baldwin - add 4" iron



Enter sewer 62.7 ft. W. of m. R. Sept. 21/91.
near range of E. curb line of Stinson ave.

~~REMOVED~~

Aug 21/91

~~House of Henry V. Tillinghast~~

#160

~~176~~ Cranston St

Henry R. Chadey Dr.

Permit #6274

Opened Aug 24, 1891

Closed Sept 4, "

cut at curb 10-5"

Pipes 6"

g. Reopened - Sept. 5, 1939

h. Closed - Sept. 5, 1939

D. Nero - Clear

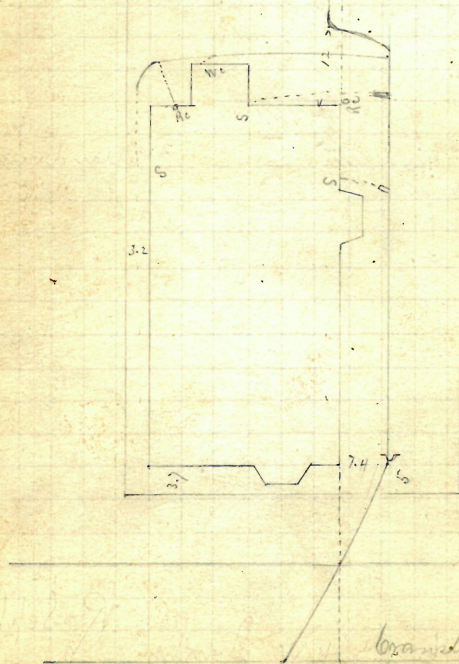
Reo. 10/14/64 C10.3/24/6

D.L.A. Olean (New Bldg.)

(Catholic Diocese)

See Print $\frac{33}{242}$

Plotted



Cranston St

Entered under 117-6 front 4' with
at Coddington St

R. Oct. 9, 1891

$$\frac{1}{\sqrt{g_{\mu\nu}}}$$

Opened Aug. 22, 1891.

Closed (in str.) " 27 "

Aug-31

Received May 19-1915

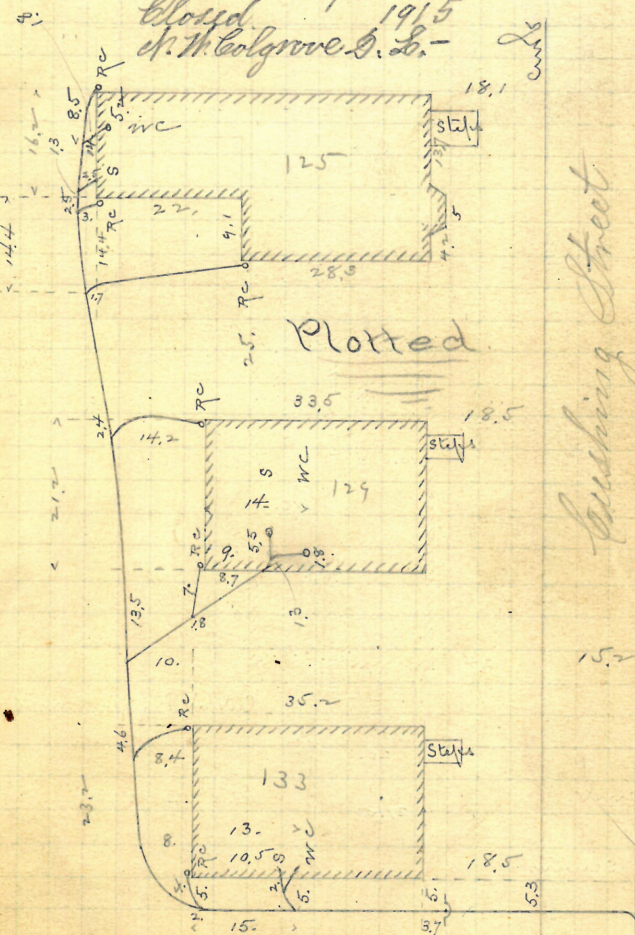
Closed 1915

Mr. M. Colgrave & Co. -

6" $\frac{1}{2}$ in
 Cut at end
 10.4 ft

6/9 Reviewed-6/9/44
6/9 Closed- 6/10/44
M. Rossi- clean #133

Received and paid Dec 29/30, 92.



Enter. Lower 137.6 ft. W.

of 1st. m. N. of Thayer's.

R. Sept. 7/91.

REMOVED

✓ Aug. 22/91. 83

Burrill Bartlett,

539 Broad St.

B. Prady Dr.

Permit #6277.

Opened Aug 24. 1891

closed " 26 "

Reopened Oct. 2-1915

Closed " 5-1915

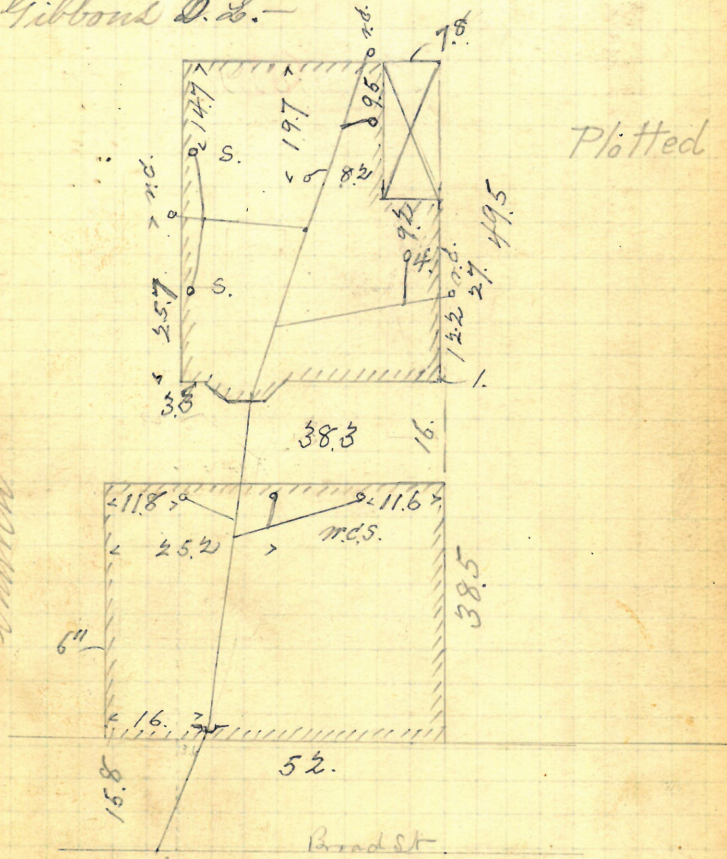
C. Gibbons D.S.

cur at curb 10-2

Pipe 5-

Plotted

Church



Aug. 22/91

Jesse Metcally + D.F. Longstreet,
54 Greenwich St.
H.R. Chadsey, D.L.

Opened Aug 31. 1891

closed Sept 1st

Reopened July 26-1924

closed 11-6-1924

D.J. Hickney, D.L.

Work above - Plotted

Permit # 6278.

cut at cut 9-5-1

Papers 6-



Entered Survey 81-2 South of 1st
and South of West Franklin St.

Re Oct 8, 1891

✓ Aug. 22 85

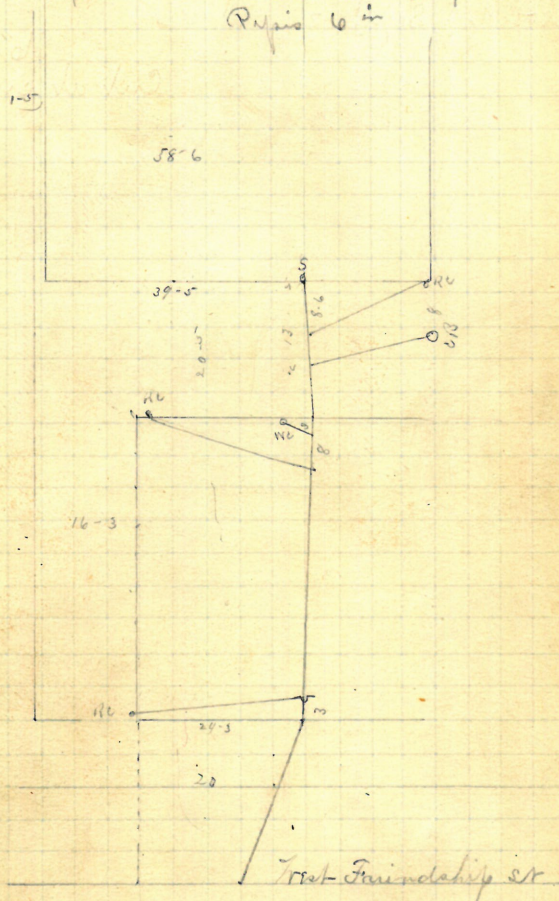
Jesse Harbally + D.F. Longstreet,
H.R. Bradsey, D.L. 58 West Friendship St.
Permit # 6279.
(Original Filed 10/18/91)

Opened Sept. 10 (891)

Cloud .. 14.

cut ab cut 10-7.

Pyris 6 in



Internal Lenses 90-5. North of 3rd
m. h. South of Greenwich St

R Oct 23 1891

86 ✓

Aug. 22/91

Martha S. B. Moulton,
Hoyd St.
N.W. cor. Hope.

A. R. Barney, S.L.

Permit # 6280.

Opened Aug. 24, 1891.
Closed Sept. 2, "

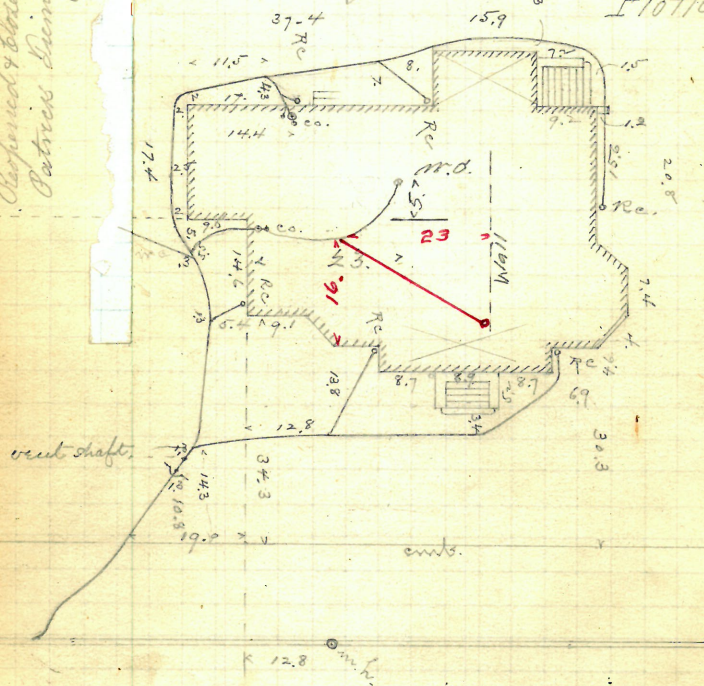
Reopened Aug. 22, 1895

Closed " 22, 1895

A. R. Barney S.L.

6" pipes
cut at curb, 10.1

Plotted.



Hope St.
Reopened Aug. 25, 1914 -
Closed " 26, 1914 -
S. O. Cannon S.L.

Enters sewer 58.5 ft. E. of
2d m.h. E. of Thayer St.

R. Sept. 7/91

Reopened 3/25/16
Closed 3/25/15
D.L. N. Dillon A.M.D.

88 ✓

GONE

Aug. 24

91

St. Patrick's Church, Corkin

67-73

Smith Jr.

Harry R. Chassey, D.L.

Permit # 6282.

Opened Aug. 26 (pm), 1891.

Closed

" 31,

"

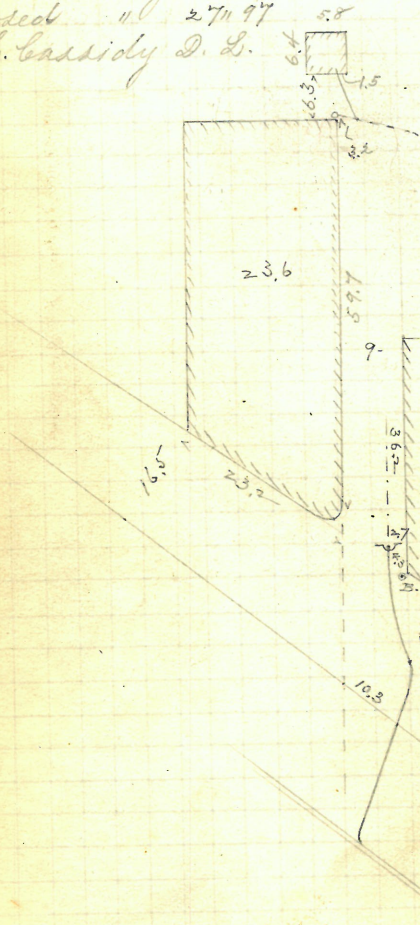
6" pipes

Culvert ends, 10.5

Reopened Aug. 25, 1897

Closed " 27, 1897

P. L. Cassidy D. L.

PlottedNew work to A.
and new trap setEnter sewer 110 ft. W. of
m.w. at State st.

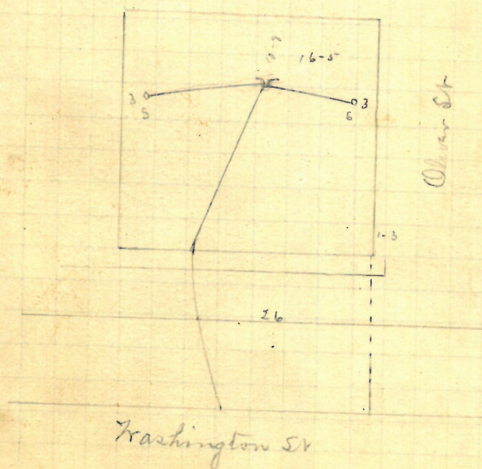
R. Oct. 19/91.

✓ Aug. 26/91. 91

Hins Phebe A. Arnold
 383 Washington St.
 R. Brady, D.L. Permit #6285.

Opened Aug 27. 1891
 Closed " 31. " Cut at curb 10-2
 Reopened May 6-1902 Pipes 5"
 Closed " 7-1902
 J. Deary, D.L. - Cleanout

Plotted



Extend sewer 50-8 west of
 at N.E. East of Oliver St R. Oct 8. 1891

Aug. 26
91.

Geo. W. Bennett #14 Jenkins St.
J. A. Blackman, D.L. Permit #6286.

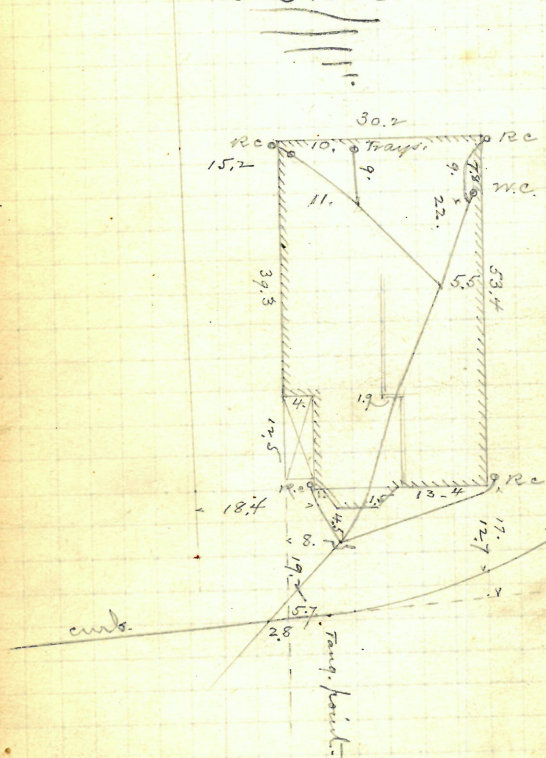
Opened Aug. 27, 1891.

Wood " 29 " (in st.)

Rec May 20 1946 5"
Clo May 20 1946 5"
Clear S. Blazer 10/46

5" tip
Cut at curb 9.8.
Trap seals 1 1/2"

Plotted.



Enters sewer 61.5 ft.
E. of 1st. m.h. E. of N. Main St.

R. Sept 21
91.

GONE Aug. 27/91 93

Chas. Cohen,

P. H. Cassidy, D.L. 391 No. Main st.

Opened Aug. 29 1891. Permit # 6287.

Closed

Reopened "Mch" 29-1909

H. Matzner D.L. Cleanout

6" and 5" pipes.

For diagram,

see p. 69.

Reopened July 21-1913

Closed " 25-1913

M. Lyons D.L. Cleanout

Pearl sink +
6" (old house)
4" lead trap
in house

R. Sept. 21/91.

Enter sewer through estate of Chas. Cohen
on N. Main st. 8. ft. E. of E. building line.

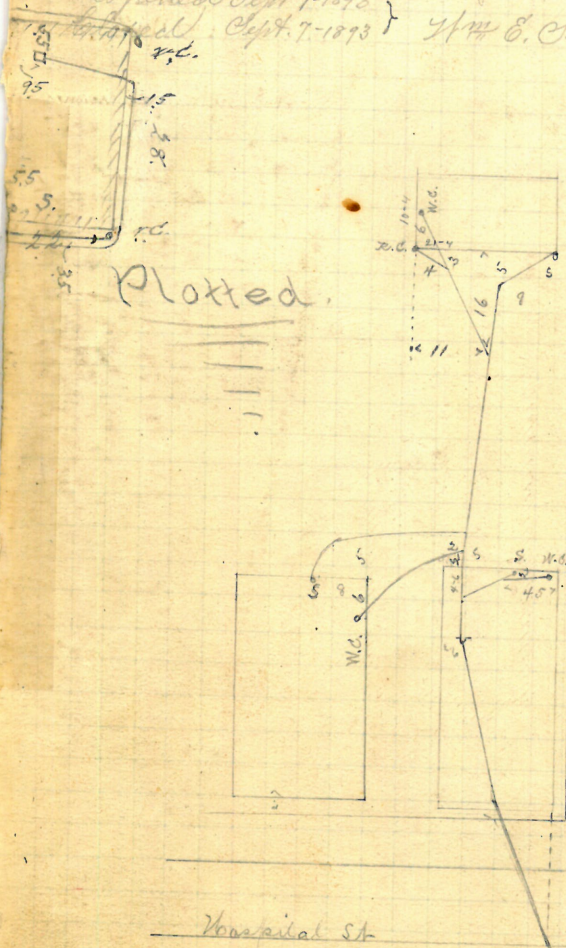
✓ Aug 29/91

Betsy Holstenholm
62-64 Hospital St.
B. Brady D.S.

Opened Sept 1st 1891
Closed " 3rd " "
Proposed Sept 7-1893

Permit 6289
cut at cut 9-8
Pipes 3"

Sept. 7-1893 } Wm E. Sherman D.S.



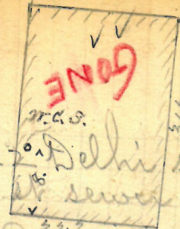
Entered Survey 100 North of M.H.
at Permit 6289 R. Oct 8. 1891

P-158
27

97

Sept. 2/91

2nd - Junction



John Keogh, 2nd Delhi St.,
Webster St. sewer

Opened Sept. 4, 1891.
Closed " " " "

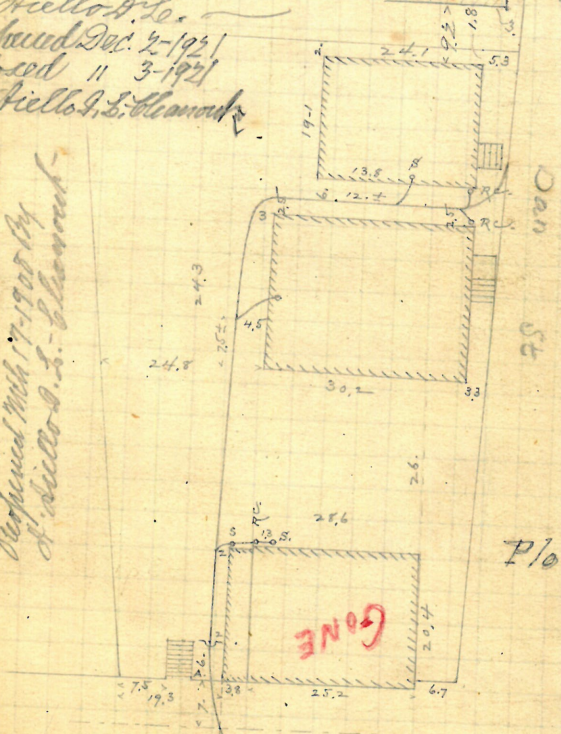
Pennell # 6291.

Reopened Jan'y 17-1912
Closed " 18-1912

5" pipes.
Cut 17 ft. out from

A. Kiello & Co.
Reopened Dec. 2-1921
Closed " 3-1921
A. Kiello & L. S. Clemond

Reopened May 24-1908
Closed " 25-1908
A. Kiello & L. S. Clemond
Reopened May 7-1908 by
A. Kiello & L. S. Clemond



Plotted

Delhi

opened July 28, 1931
also L. Chan

4/5 Reopened April 3/52
closed April 4/52
152 M. Rossi - clear

Enter sewer at m.h. head of Webster St.

R. Odria

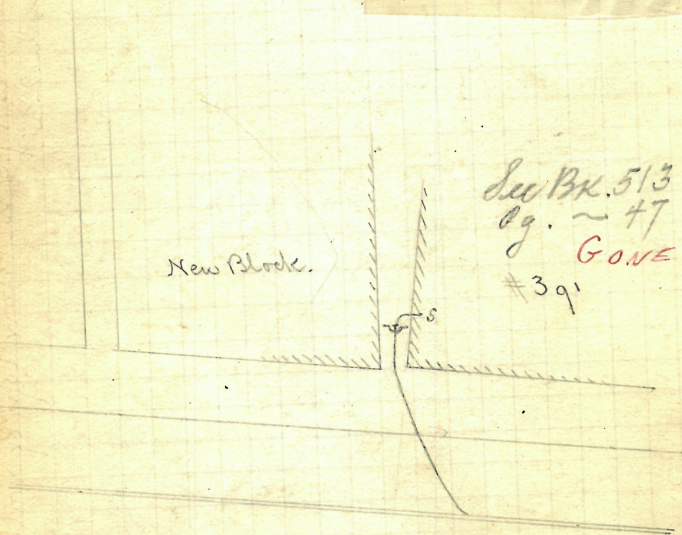
wall or building is 17.3 ft. below top of wall at A.

GONE

Sept. 21/91.

Chas. Cohen, 391 No. Main St.
 P.H. Cassidy D.L. Permit #6292.
 Opened Sept. 4, 1891.
 Closed " " "

Plotted.

Front side
old house

See Bk. 513
 pg. ~ 47
GONE
 #391

Enters sewer 71 ft. N. of m.h.
 at angle, (being the connection
 abandoned by A.H. Calder.)

R. Sept. 21/91

✓ Sept. 2/91 99

Bridget Dolan

B. Brady D.L.

Opened Sept 12. 1891

Closed 14.

Reopened Aug. 19-1920

Closed 11-19-1920

W. J. Scherlij D. L.

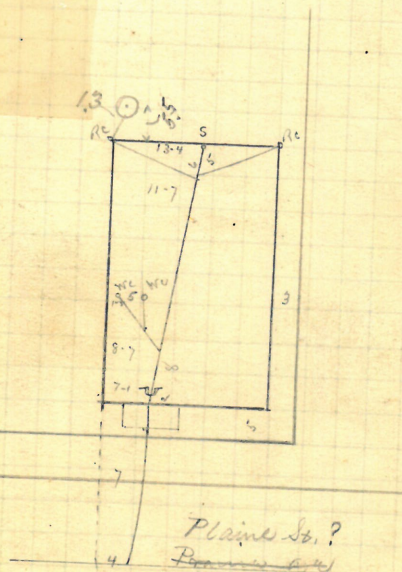
#150 P. Plain St.

Permit #6293.

cut at cut 10-3

Pipes 5-

Plotted



Entered sewer 75 ft north of
3rd St. South of Lockwood St.

R. Oct 8 1891

Sept. 3/91.

Amelia F. J. Freeborn,
 wife of George.
 #34 Irving Ave.
 NW cor. Taber ave.

H.R. Chassey, D.L.

Permit # 6294.

Opened Sept. 16, 1891.

Closed Sept. 19, 1891.

 6" pipes.
 Cut (no curb)

Reopened April 21-1910-
 Closed " 23-1910-
 S.A. Perry D. L.



Plotted

Taber Ave.

Enters sewer 31.7 ft. W. of
 1st. W. N. W. of Taber ave.

R. O. Dr. 19/91.

103
Sept. 3/91.

Joseph H. James,

425-2 Pine St.,
N.E. cor. Myrtle St. #71

H.R. Chadsey, D.L.

Permit # 6297.

Opened Sept 4 1891
closed " 10 ...

cut at curb 10-5
Pipes 6 in

Recd. 7/16/65 Clo. 7/17/65
D.L.A. Ricci (Clear)

Plotted

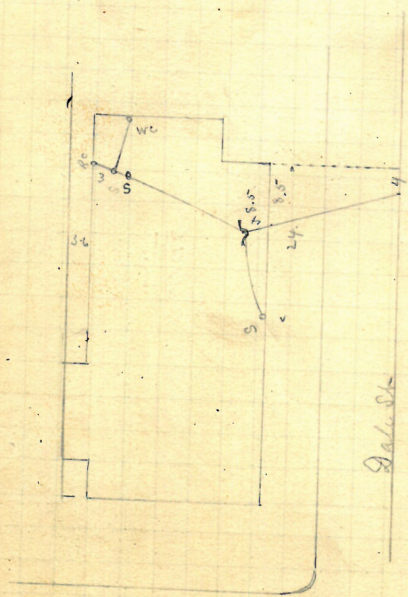
Myrtle St



Pine St
Entered Sewer 92-1 South
of 1st N h South of Linden St R 100 30 1891

Sarah Mulvey, wife of Wm F.,
431-433 333 Kinvel's ave. 6
1 W Cor Dale St.

R. Brady, D.L.
Opened Sept 4. 1891 Permit # 6299.
Closed 8. cut at curb 10-6
Papers 5 ~



Plotted

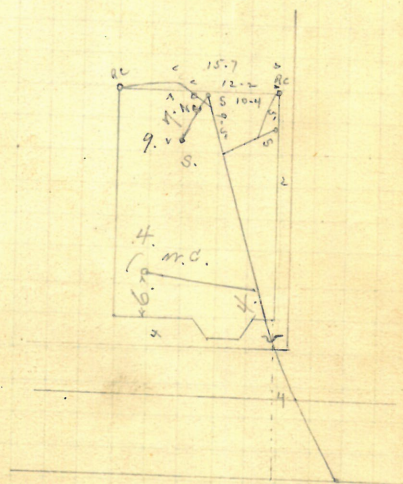
at cross ave.

Entered Sewer 106-5 South R Oct 8. 1891
of 2nd. mi S. of West Exchange St

107
Sept 9/91

Amanda M. French,
45 Dartmouth ave.
J. I. Blackman, W.L. Permit #6301.
Opened Sept. 9, 1891.
Closed " " " " cut at cut 16-5-
Reopened & closed June 29-1904 Pipes 5-
J. Deary L. L. -

Plotted



Entered Survey 47-2 West of
6th N. h. West of Broad St

R Sept 29. 1891

Sept. 9/91

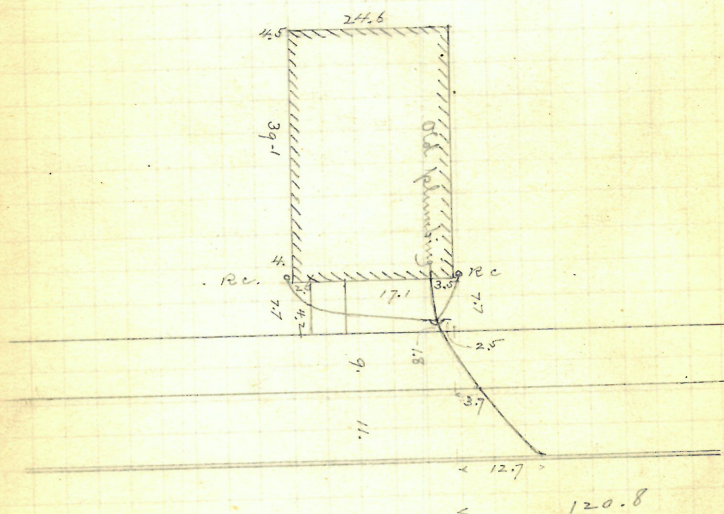
Hire of Geo. W. Mowry
John Keogh, Sr. 9 Woodland St.
Permit # 6302.

Opened Sept. 26, 1891.

Closed
Resealed Feb. 25-1913
Closed " 27-1913
S. Greer & S. - Channet.

6" pipes.
Cut at curb 10.3, as
given me by Donahue
Work done without
notice.

Plotted.



Enters sewer 108.1 ft. W. of
2 m. W. of Park St.

R. Oct. 19/91

Sept 11-91

William L. Whittmore

1607 Prospect St

John Kough's Dr. Permit 6304

Opened Sept. 16, 1891.

Cloud " 25, " 6' pipes.
Cut at curb, 9.75.

These figures in the column are approximate
only, as the water was down and covered
with concrete to 15 ft. was notified.
The sewer located the pipe later as much
as the could have been built. - C.K.

Enters sewer 13.5 ft. S. of 2nd m.h.
N. of Halsey St.

R. Oct 19/91

Sept 11-91 111

William C. Ashkettle

162² Prospect St

John Keogh Esq.

Permit 6305-

Opened Sept. 17, 1891.

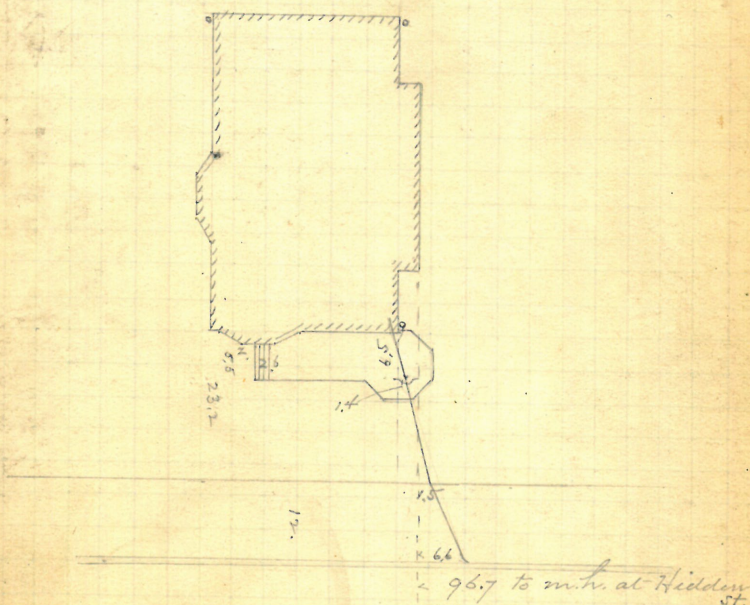
Closed

" 22, " 1
3

6" pipe.
Cut at cut, 9.5.

Plotted

Interior piping laid and
concreted over previously.
Mr. Long says it is the
same as Mr. Whitemore's,
(p. 110.)



Enters sewer 90.1 ft. S. of
m.h. at Hidden St.

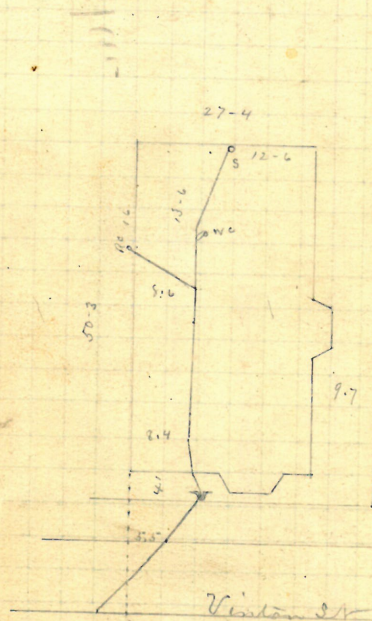
R. Oct 19/91

Mathew S. McLeod & Trism
89, Vinton St
W. R. Lehadsey Es.
Permit 6307

Opened Sept 15 1891

closed " 18. " cut at curb 10 - 3
Pipes 5"

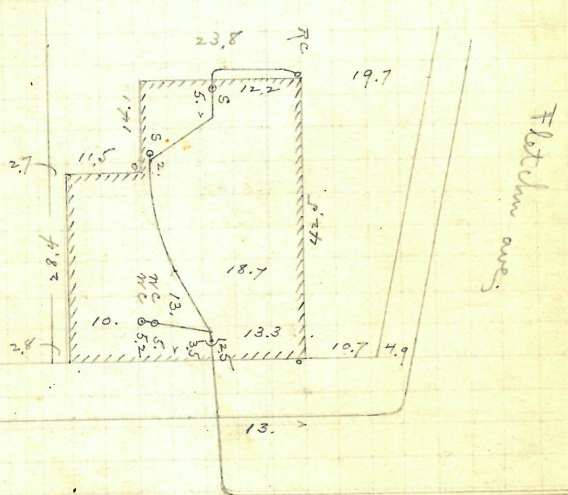
Plotted.



Entered Survey 18-6 South of
2nd St North of Asia St R Oct 25, 1891

Sept. 14 / 91.

Thos. F. Arnold, 31 Davis St.
 H. R. Bradley, D.R. N. E. cor. Fletcher Ave.
 Permit # 6308.
 Opened Sept. 21, 1891.
 Closed " 23, " 5" pipes.
 Cut at curb, 10 ft.

Plotted.

Enter sewer 98.5 ft. N. of
 4th int. N. of Smith St.

R. O. D. 1 / 91.

✓ 115
Sept. 15
1891.

Mary E. Harmon,
wife of William

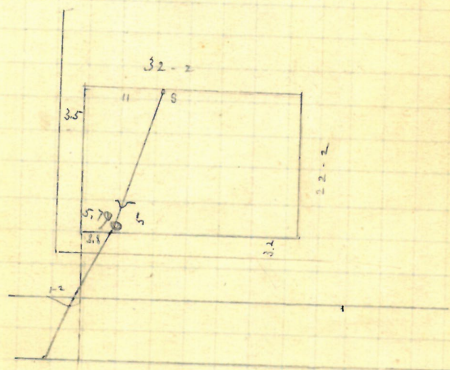
P. Brady, D.L.

35 Conduit St.
Permit # 6309.

Opened Sept 15th 1891.
closed 16 "
Reopened Aug 9, 1927
closed " " 1927
J.R. Douglas & S.

cut at curb 10-3
Pipes 5"

Plotted



Entered Survey 68-2 East of
M.H. at Summer St

Re Oct 9. 1891

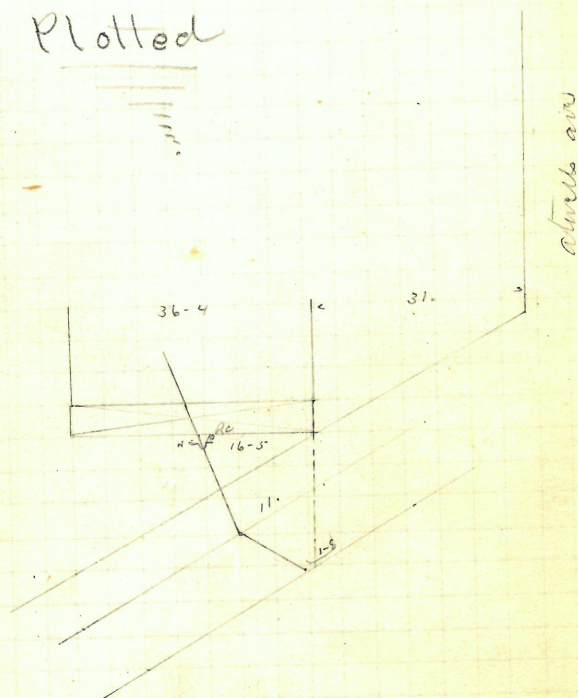
116_{vv}

Sept. 15/91.

N.Y. P + B R.R. Co.
S.W. cor Atwell's ave
+ Ridge str.

H.R. Chadsey D.L. Permit # 6310.
Opened Sept 18. 1891 cut at curb 10-4
closed " 19. " Pups 5"

Plotted



Entered Survey 33 ft South of
1st on h South of Atwell's ave

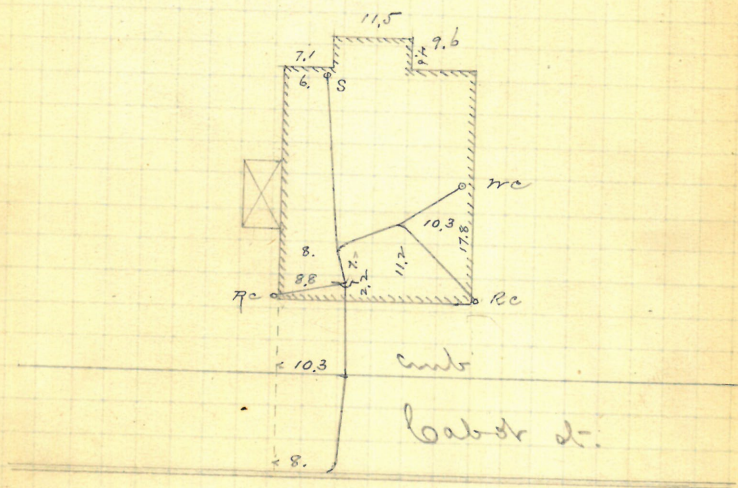
R Oct 9. 1891

✓ 117
Sept. 15 / 91

Jessie O. Arnold
wife of Wm H.
#18 Baber st.
J. A. Blackman D.L. Permit # 6311.
Opened Sept. 16, 91.
Closed " 21 " 5 pipes.
Cut at curb 9.6

Extension work has
since been done here
without notice, by J. A.
Blackman.

Plotted.



Enter sewer 201.8 ft. N. of
1st. int. N. of Angel st.

R. Oct 21 / 91.

Sept. 16 / 91

Eliza D. Solomon

458 3~~4~~ 4th Ave

H. R. Chadsey, D. L.

Permit # 6314.

Opened Nov 3rd

Closed " 4 1891

Reopened June 13-1923

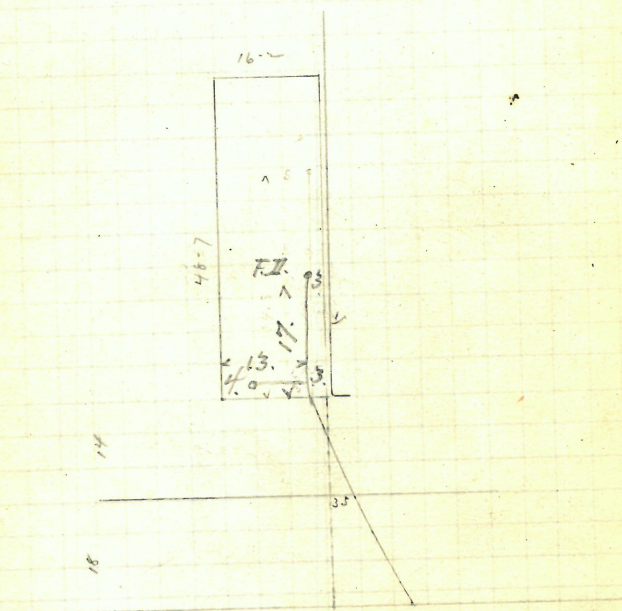
Closed " 11 13-1923

J. De Mayo, D. L.

cut at curb 10-8

Pipes 5"

Plotted



Entered Survey 46-4 East of
1st m h east of Knight St

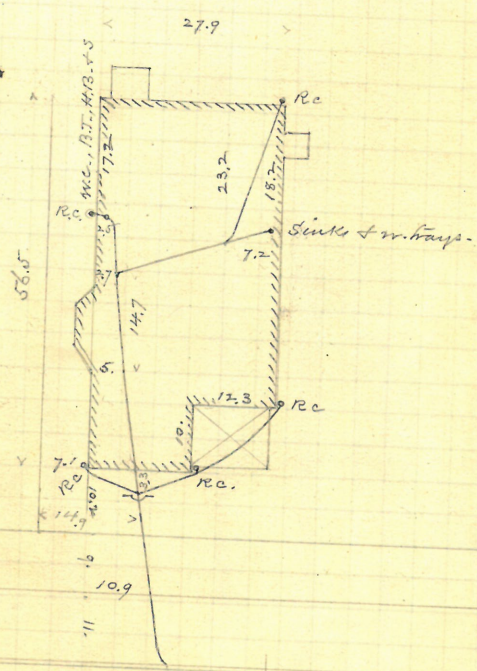
R Nov. 30 1891

✓ 121
Sept. 17/91

Larry A. Bontelle,
wife of Albert L.,
P. H. Cassidy, D.L. 136 Brownell St.
Permit #6315.

Opened Sept. 21, 1891.
Closed " 26, " 1914
Reopened " May 21, 1914
Closed " 25-1914
Ch. H. Holgrave A.S. - Delay

Plotted.



Enters sewer 104.3 ft. W. of
1st. m. Tr. W. of Holden St.

R. Sept. 30/91.

Sept. 18/91.

Eliza N. Bartlett, #5 Wade St.
H. R. Chadsey, D.L. Permit # 6316.

Opened Sept. 24, 1891.

Closed

Reopened Oct. 30-1918

Closed " 31-1918

A. P. Meadows, L. L.

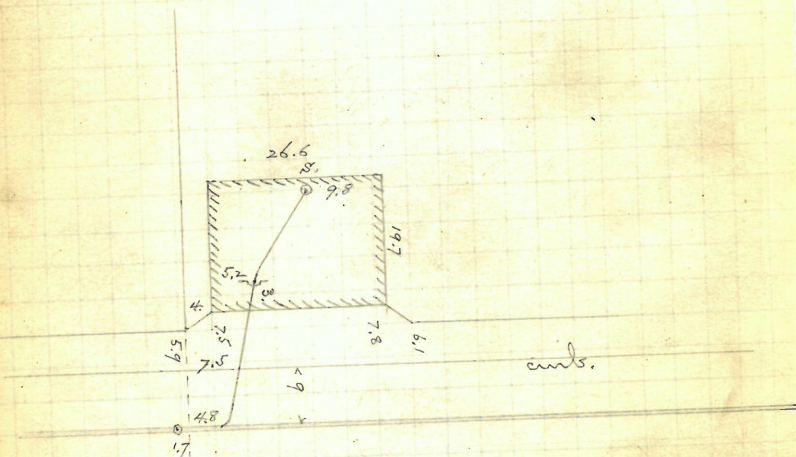
Remove Trap -

5" pipes.

cut at cut, 10.6.

trap scale 2 1/2.

Plotted



Enter. sewer 6.5 ft. S. of
2^d w. n. S. of Wickenden St.

R. Oct. 1st 91.

✓ 123
Sept. 19/91

Phoebe A. Millard

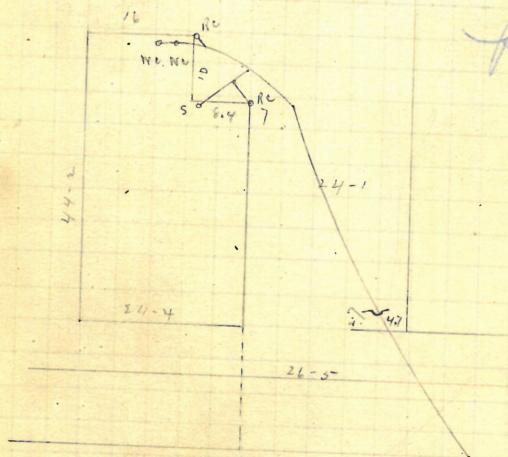
206 + 24 Chestnut St.
J. A. Blackman, St.

Opened Sept 22 1891
closed " 24. 1891

Permit # 6317

cut at curb 8-2
Pipes 5"

Plotted



P. 170
25

Entered Cur. 83-2 North of
M. at South St

J. R. Oct 23, 1891

Sept. 19/91.

Sarah J. Eddy, - Ridge St. 9
H.R. Chadsey, D.L. Permit # 6318.

H. R. Chadsey, D. L.

Permit # 6318.

Opened Sept 21st 1891

Cloud .. 23

cut at curb 11 ft
Pipes 5 ft

Pipes 5m

Tellur-

Plotted

69. $\sqrt{5}$.

Ridge st

Entered Series 125-ft South of
high at Fall St

high at Fall St

R. Oct 9. 1891

Sept 23
91

Bridget Lynch, wife of William
W. Exchange St.
N.E. cor. of Tafft.

H.R. Chadsey, D.L. Permit #6320.

Opened Sept 28 1891
Closed 30 ..

Reopened July 12 1906

Closed " 14 1906

D. Holmsted D. L.

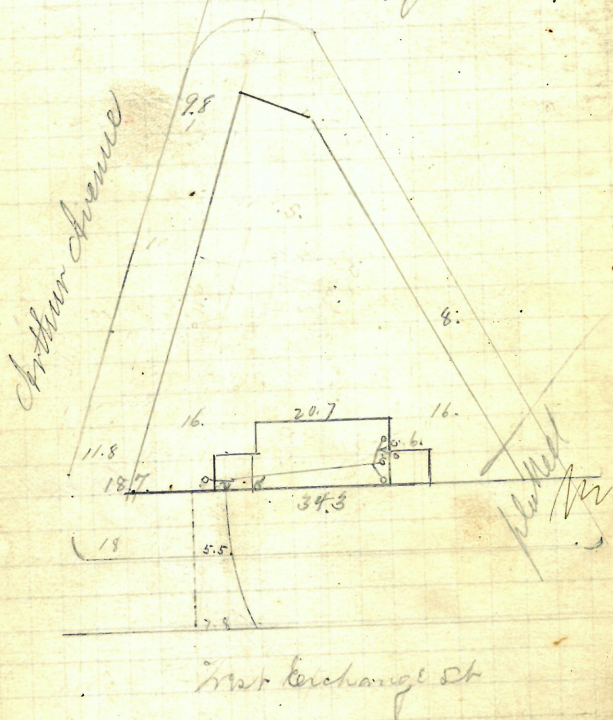
cut at curb 10.3

Pipes 5" -

Reopened June 24/31.

Closed July 1/30

F. Lee D.L.



Entered Survey 159. ft. west of
1st m. l. East of Dean St. Error 30

Sept 24/91

REMOVED

Emerson Newell, 49 Winter St.

B. Brady D.L.

Permit # 6322.

Opened Sept. 25 1891

Closed " 26, "

Reopened June 93

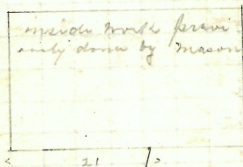
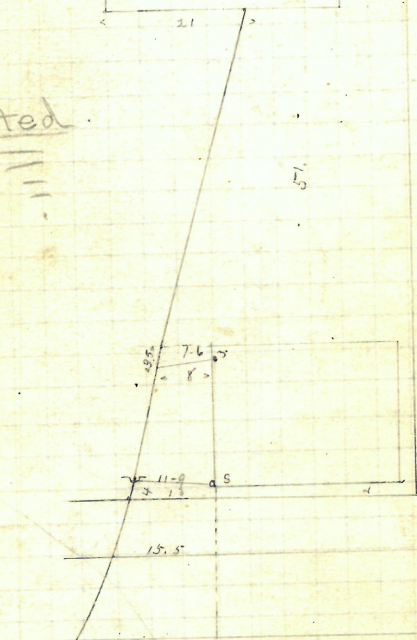
Closed - 93 B. Brady D.L.

6" pipes

Cut at curb, 98

Gilman

Inspr

Plotted

Entered sewer 55 ft. N. of
21. m. N. of Broad St.

R Oct 9. 1891

Sept. 25/91.

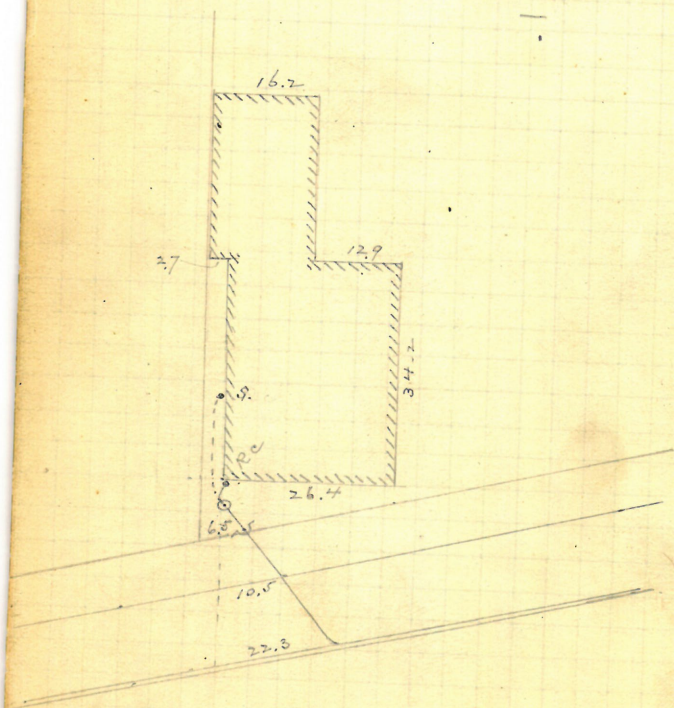
Amasa S. Westcott, 27 Davis St.
H.P. Chadsey, D.L.

Opened Sept. 28/91.
Closed " 30, "

Permit # 6326.

5" pipes.
Cut at ends, 10.

Plotted



Enters sewer 92.6 ft. N. of
3d. w. N. of Smith St.

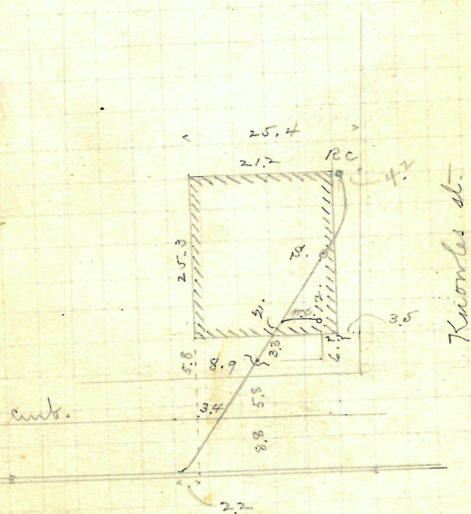
R. Oct. 19/91.

✓ Sept. 24/91. 131

Ann Boyle, 38 Royal st.,
N.W. cor. Knuckles,
John Keogh, D.L. Permit # 6325.

Opened Sept. 25, 1891.
Closed " 26, " 5" pipes
Reopened & closed Nov. 5, 98. Cut at curb, as
given me by Frank,
P. Tierney, D.L. 8.6.

Plotted.



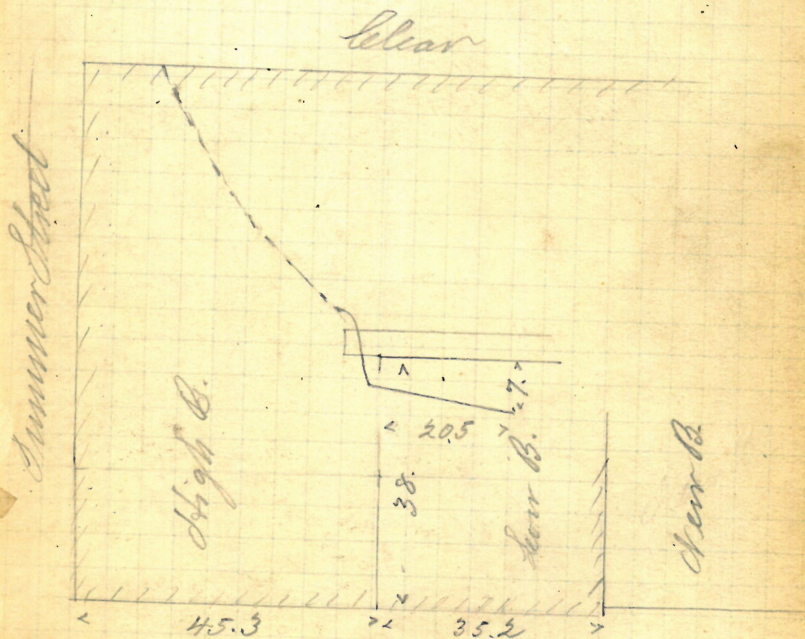
Enters sewer 448.4 ft. E. of
2nd main N. of Knuckles St.

R. Oct. 19/91.

✓
Sept. 24/91Leander R. Peck,
#27 Meadow St.
Fred B. Horton D.L.

Permit # 6323.

Reopened & Closed July 12-1900
 J. Deary D.L. - Clednout
 Reopened Apr 5-1906
 Closed " 11-1906
 H. K. Chadsey D. S.



Entered Since 10-2 East of 3rd
 2nd East of Lockwood St. R. Dec 23/92

130

GONE
4-19-84

Sept. 24
 91

Annie E. Watson wife of Robt. W.

325 Point St.
 (W Clifford St sewer.)

B. Brady D.L.

Opened Oct 6 1891

closed " 10 "

Reopened to Cleanout May 17 1907 by J. Deary D. L.

Reopened May 23 1907

to Relay with Iron by

J. Deary D. L.

Reopened Sept. 17 1914

closed " 27 1914

H. H. Shackelford D. L.

Disconnect & connect

Plotted

Permit # 6324
 cut at cut 3 ft
 Pips 5"



Point Street

Enter Sewer with man hole at
 West Clifford Street

#495 Elmwood Ave. Sept. 25/91

133

John M. Boole

261 Greenish St.
S. W. cor. of Redwing St.

H.R. Chadsey W.L.

Permit #6327.

Opened Oct 1st 1891

Closed " 2nd 1891

cut at curb

Reopened & closed May 19-1903 Pipes 5"

W.H. Chadsey & L.L. Blount

Reopened Oct 10-1904

Closed " 12-1904

A.W. Colgrove & L.L. Blount

Reopened Nov. 9, 1936

Closed Nov. 9, 1936

M.M. Nally - Clear

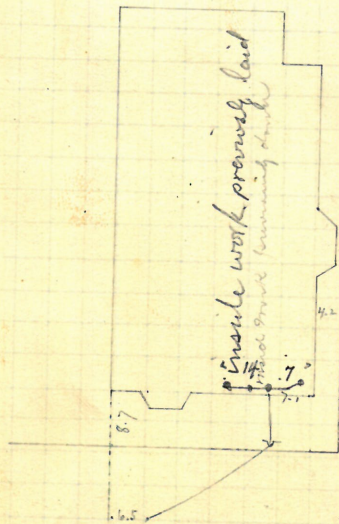
Open Sidewalk

Re Feb 9 1949

Clr Feb 11 1949

ask W.C. Balth & Humer & Russell

Plotted



Intersect at 1st m h
South of Redwing St

R Nov 30 1891

✓ Sept. 26/91 135

Louis R. Horton

for A. Blackman, D.D.

W. Friendship St.

Permit # 6329.

Opened Sept 26, 1891

Closed " 29. "

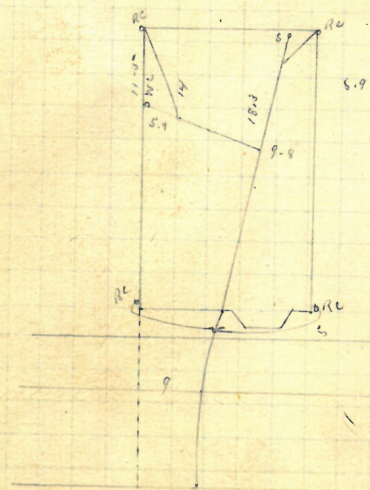
Reopened June 16, 1926

Closed " 17, 1926

M. Lyons & Co. - Steamboat

cut at cut 10-8
Pipes 5-

Plotted



West Friendship St

Entered Sewer 10-2 north of 6th W h North of Broad St R Nov 30 1891

Sept. 30/91

Central Congregational Society,
 #116-124? Angel st.
 Jas. Davis, Son, D.L. Permit #6332.

Opened Oct. 1, 1891

Reopened July 30-1907

Closed " 30-1907

J. B. Pierney & Co.

56.5

July 25, 1931

July 25, 1931

10 12.4 18.5 21.8 5.2

Reopened Sept 28, 1931

Closed Oct 9, 1931

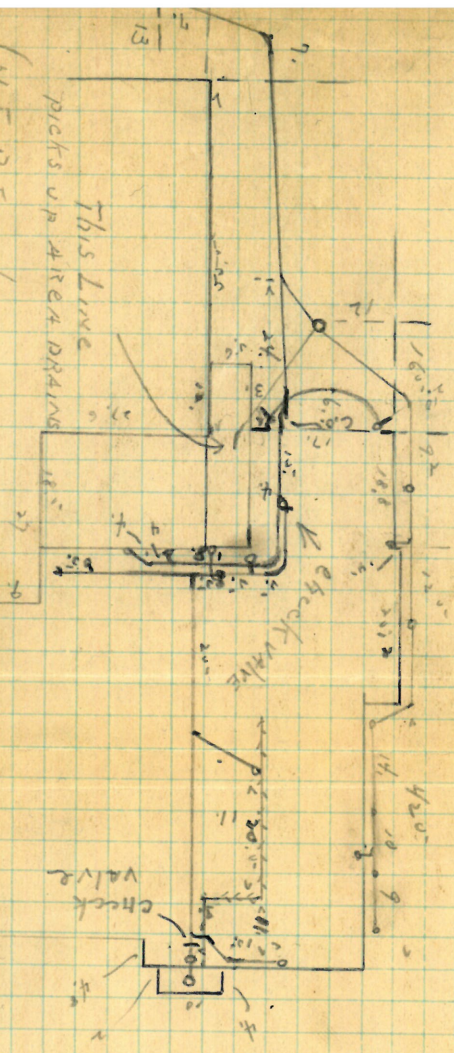
H. Berendse & Co.

Enter lower 44.4 ft. E. of
 2d. on Tr. W. of Diman Pl.

R. Dec. 10/91.

(NOT PUT IN by
N. BERNARDI (11))

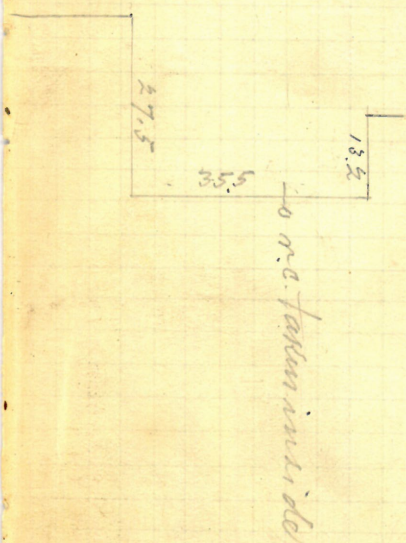
This line
picks up area drains



46332
 Carbondale Engineering
 294 Ingalls St.
 Carbondale, Ill. 62901
 8/31/31
 General - July 20/31
 General - 8/31

Sept. 30/91. 139

Central Congregational Society,
#116-124? Angell str.
Jas. Davis, Hon. D.L. Permit # 6333.



Enters sewer 164.6 ft. E.
of 2^d m. W. of Angell str. Diman Place.
R. Dec. 10/91.

Sept. 30/91.

Harriet N. Brown, 550 Broad St.

R. Brady L.

Permit # 6334.

Opened Oct 10 1891

Closed

" 12 "

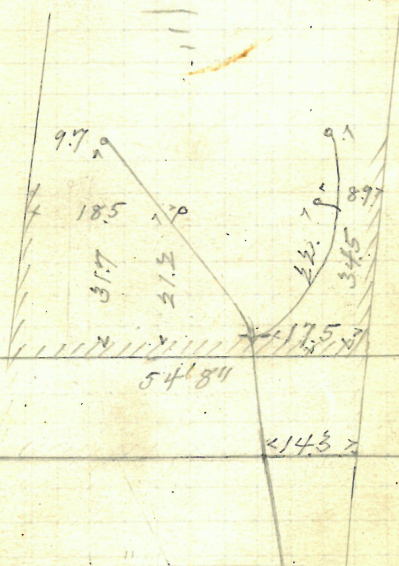
cut at cut 9-8

Reopened Apr. 25-1913

Pipes 5"

Closed May 2-1913

Chas. W. Colgrove D.S. Relay-

Plotted

Broad St

Entered Survey 19-7 East of
1st W. h East of Summer St. R. Nov 30/91

✓ Sept. 30th 1411

Permit # 6335.

cut- ab cut- 10-2

Pipes 5 -

Closed " 23, 96

C. R. Blackmar D. L.

Reopened Nov. 3-1915

Closed " 1915

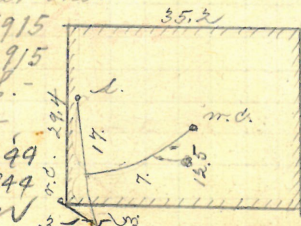
M. Lyons D. L.

Gleanout -

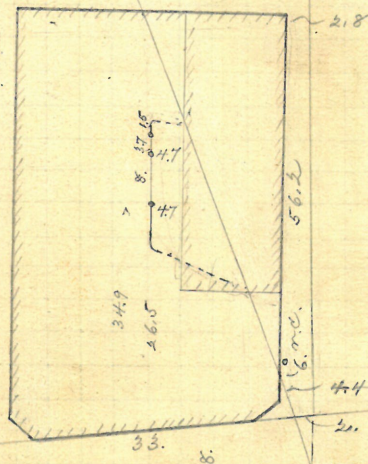
$\frac{1}{2}$ Repaired - Nov. 9. 99

Closed - Nov. 9, 1944

P. Lapierre - Clair



Reopened July, 19, 1927
Closed July, 19, 1927
P. R. Walker D.



Summer Street

Entered Series 105-1 north of R row 30
1st W h South of boundary Str 20

193

Sept. 30 / 91.

James R. Scanlon,
#185 Cedar West Exchange St.,
S.E. cor. of Murphy.
Permit # 6336.

Reopened Oct 22. 1891

closed " 22. 1891

Reopened Oct. 23-1901-

Closed " 23-1901-

Reopened Aug. 3-1903

Closed " 6-1903

Geo. H. Lewis & S. S. Blount

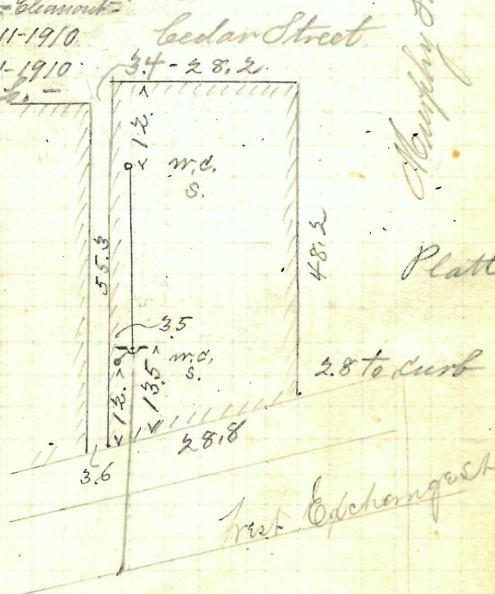
Reopened Aug. 11-1910

Closed " 11-1910

J. A. Perry & Co.

cut at curb 9-11

Pipes 5"



Murphy Street

Platted.

Entered Survey 170 ft. West
of M. H. at Acorn St

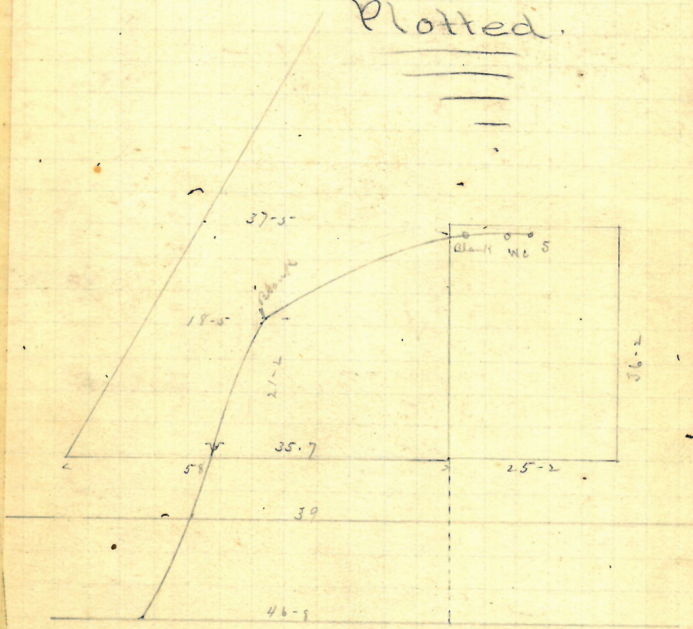
R Nov 30. 1891

Sarah Kane, #58 Florence St.
John Keogh, D.L. Permit # 6337.

Cloud Oct 2nd 1891
Cloud " 5. "

cut at cut 10
Pipes 5-

Plotted.



Florence St.

Introd. Sur. 1165-9, north of R. Oct 23
3rd m. South of Rosenth St. 1891

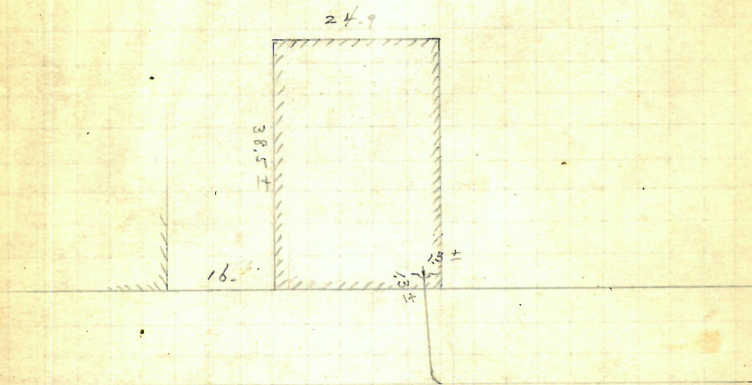
Oct. 1/91.

John Miller
 #31-33 #16 Gardner St.
 John Keogh, D.L. Locust
 Permit # 6338.

Opened Sept. 26, 1891. } 5 or 3 days before
 Closed " 28, " } issue of permit.

5" pipe.

but from surface at
 curb line (no curb set), as given
 me by Frank, 10.5 ft. \pm



Enters sewer 77.3 ft. E.
 of 2^d int. N. of Camp St.

R. Oct. 19/91.

H

W Oct. 1/91. 145

John Miller, Locust #37 ~~Locust~~ Dr.

John Keogh, Dr. S.W. corner Camp.

Permit #6339.

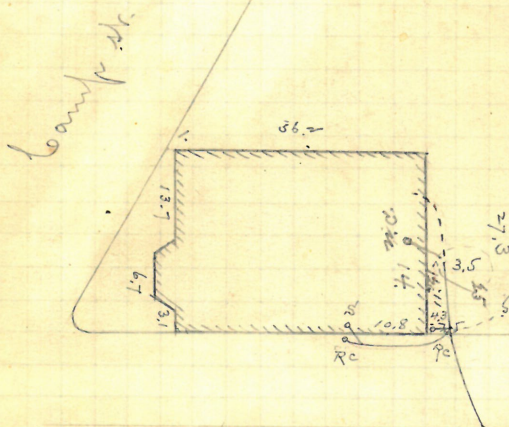
Opened Sept. 25, 1891. } 6 a. 5 days before
Closed " 26, " } issue of permit.
No notice.

Cut from surface, at 5" pipes.
cuts line (no curb str.)
as given me by "Frank", 10.2 ft. ±.

Reopened June 21, 1929
Closed June 21, 1929
P. H. Left L. Chan

Reopened - 7/30/43
Closed - 7/30/43
R. Bush - Clear

Reopened Sept. 28, 1921
Closed " 29, 1921
Ch. Miller - S. Dr.



Enters sewer 107.7 ft. E. of
20 min. N. of Camp str.

R. Oct. 19/91.

Oct. 2/91

Peter Kelley 61 Julian St.
John Keogh D.L. Permit # 6340.

Opened Oct 7 1891

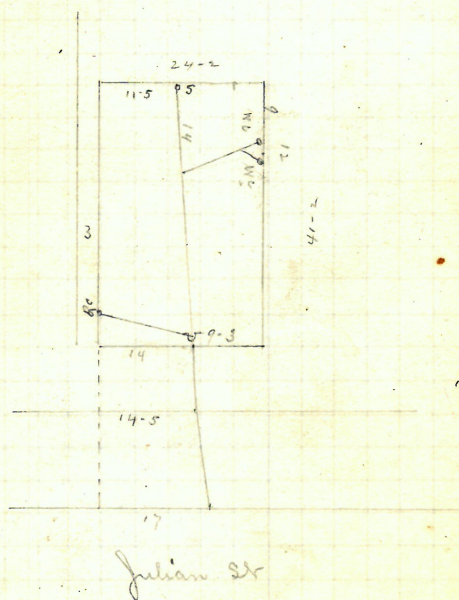
Closed " 7 " cut at curb 10 ft

Reopened & Closed May 25 98. Pps 5-

H. M. Goldrick S. L.

Turn changed l. to left for N.C.

Plotted



Entered sewer at 2nd m h
South of Karsuth St

R Oct 23rd 1891

147
Oct 2/91.

2/91.
Michael Kelly
John Keogh ¹⁰⁵ 77 Julian St.
SE 63/1 Smith C
Permit # 6341.
Rec'd Feb 29 1891.

Opened Oct 29, 1891

cloud 30

Reopened Aug. 6-1909

Closed m 6-1909

J. Deary D. L. - Cleanout

Reopened Mch 14-1910

Closed " 15-1910

J. Deary D. L.

cut. at cut 9-9

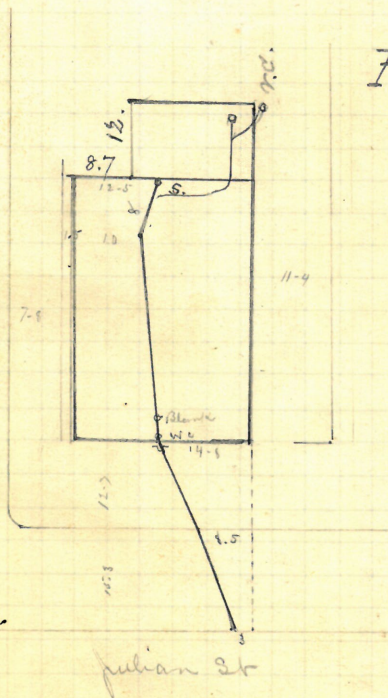
P. 5-

Reopened

closed

1967

F. Donahue clear



Entered Service at 1st m h
South of Kasaan St

R. Dec. 11. 1911

GONE

Oct 3/91

one,
Bernard + Jennie McTier
John Keogh D.L. 69 Florence St.
Permit 6342

Opened Oct 7, 1891

Closed .. 12, 1891

Reopened & closed Mch 26, 1898

J. Leary D. L.

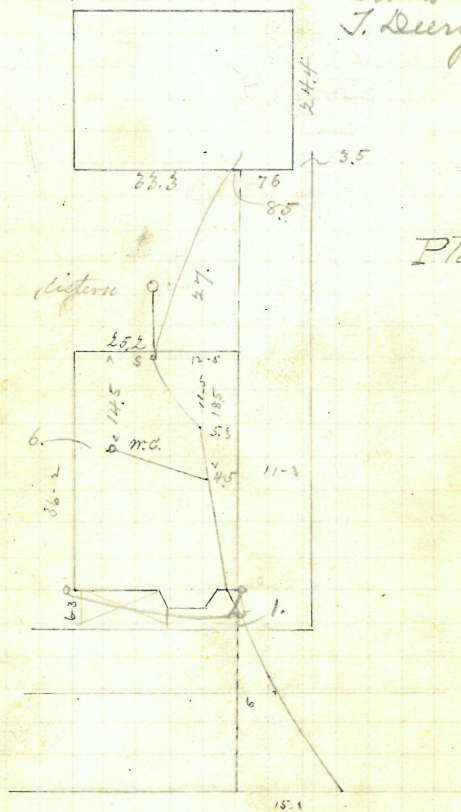
cut at cut 9-5

Pipes 5"

Reopened Nov 9, 1921

Closed Nov 9, 1927

J. Leary D. L.



Plotted

Florence St

Entered Sewer 71-2 North of
2nd Mch South of Kasanth St

R Nov 30 1891

Oct 3/91

Peter Lowman Joslin st.

f. A. Blackman DL

Permit # 6344

Opened Oct 9. 1891

closed .. 12. 1891

Reopened - Dec 21. 1934

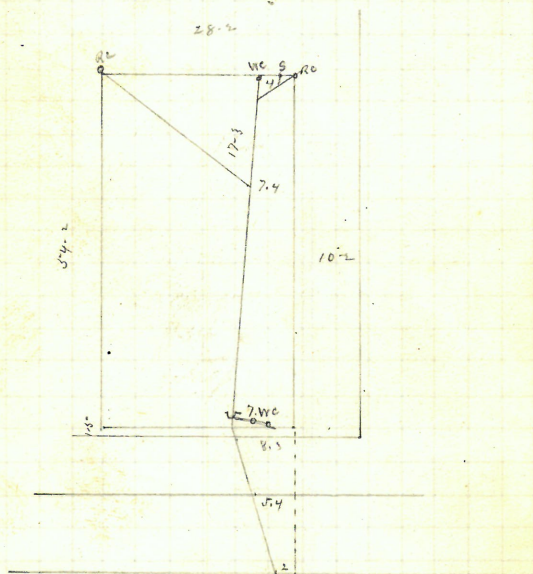
Closed - Dec 21. 1934

J. A. Gammings - flange trap

cut at curb 10-6

Pipes 5"

Plotted.



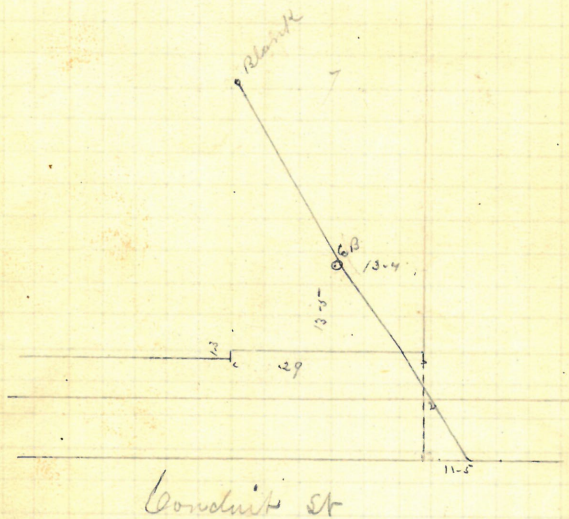
Joslin st

Entered Sewer 74-3 north of R Mr 30. 191
 2nd m h south of Atracitown

✓ Ock. 151
3/91.

American Electrical Works,
26 Conduit St.
R Rady St.
Permit # 6345.
Opened Oct 5th 1891
closed " 5 " " cut at curb 10-1
Pipes 6-11

Plotted.



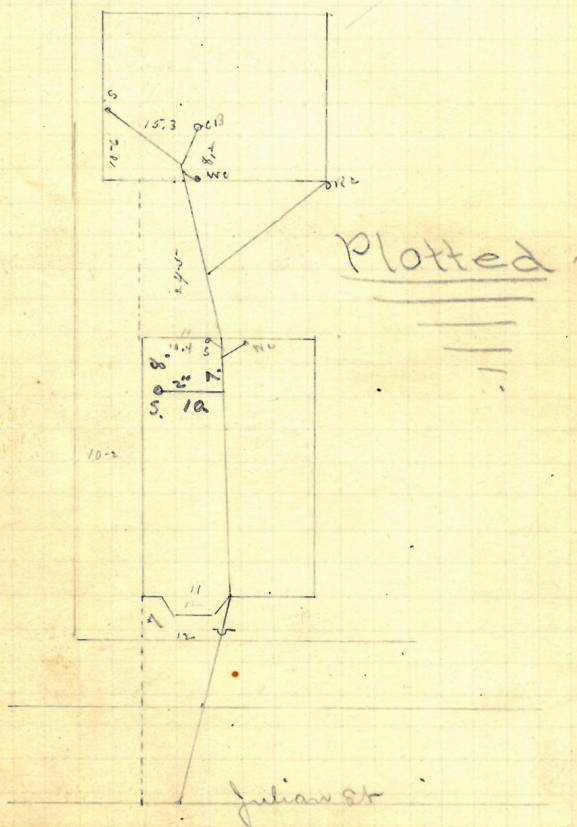
Entire Sewer 19-4 East of
2nd m h East of Summer St R Nov 30/91

Oct. 5/91 153

Catherine Fanning 84 Julian St.
John Keogh S.L. Permit # 6347.

Opened Oct. 28. 1891
Closed .. 30. 1891
Reopened Mar. 20, 1939
Closed - Mar. 21, 1939
S. Ciancio - add link

cut at curb 9-9
Pipes 5-



Entered Survey 59-3 north
of 10th m h north of Cassin St R 11 11

Oct 5/91

Wm Garrahan & wife
 John Keogh, D.L. 95 + 97 Julian St.
 Permit # 6348.

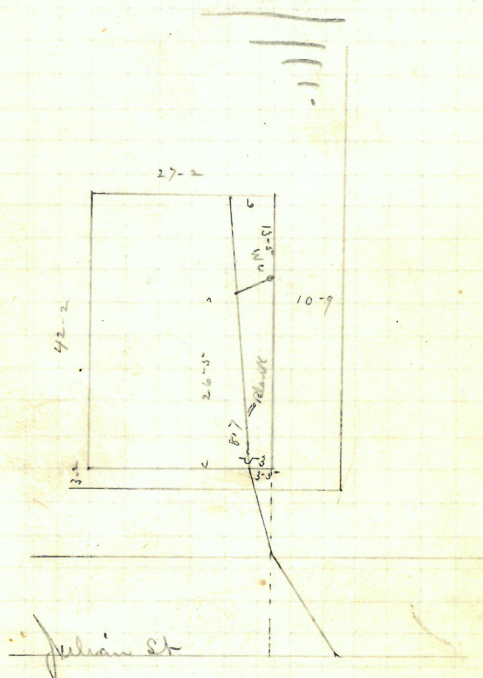
Opened Oct 13. 1891

Closed " 14.

cut at cut 9.9

Pipes 5"

Plotted.



Entered Sewer 53-2 north of
 2nd mile north of Rosneath St R Dec 11/91

Oct. 6
91

Patrick McGoorty + Wife.

John Keogh D.L.

76? Florence st.

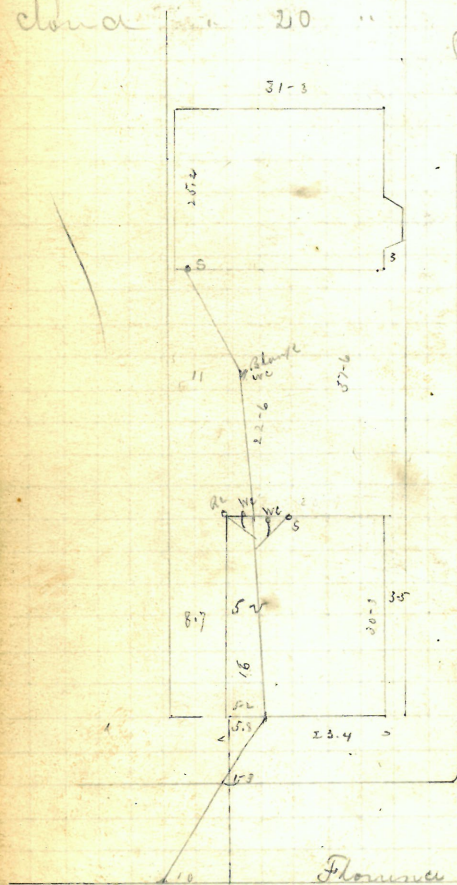
Permit # 6350

Open d. Oct 14 1891
cloud " 20 "

don a 20

cut at curb 9-6
Pipes 8'

Pipes 5



Plotted

Presmith St

Flournoy St.

Intended Survey 155-9 north of
2nd m h South of Kasent St. R. Dec 11

107-109 JULIAN ST

157
Oct. 6/91.

Catherine Sweeney

John Keogh Esq. #81 - 83 Julian St.
#33 Rosenth St
Permit #6351.

Opened Oct 8, 1891

Closed " 9, "

Reopened June 14-1911

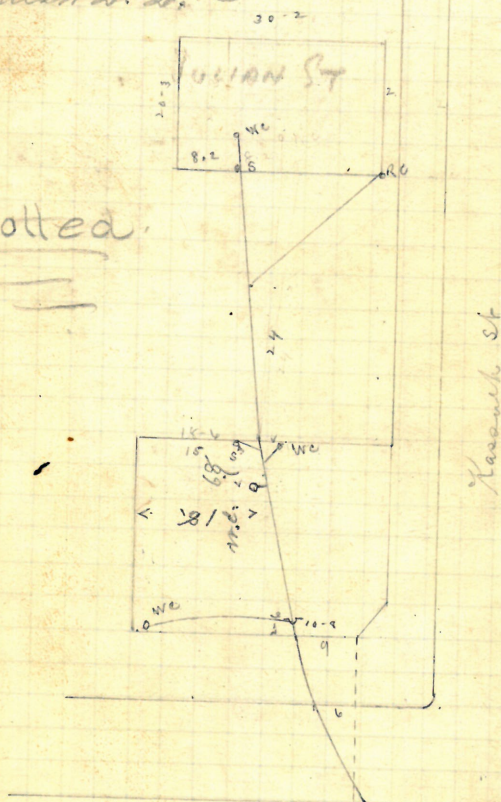
Closed " 16-1911

W. Walsh & Co.

cut at cut 9-9

Pipes 5"

Plotted.



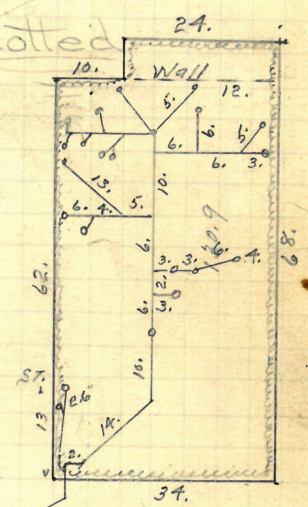
✓ Oct. 159
7/91.

John W. Danielson
P.O. Box #206, 2 Governor St.
Opened Oct. 9th, 1891. Permit # 6353.



Reopened 11/19/58
Closed 11/19/58
D.L. M. Iacobbo (Outside)
Inside by T. O'Leary.
12/3/58

Plotted



Trap removed

Governor Street

Enters sewer 35 ft. N.
of 2nd m. N. of Waterman St.

Oct 7/91

Charles W. Holbrook,

392 Pine St.

Bernard Brady, D.L.

Permit # 6354.

Opened Oct 9, 1891

Closed " 14. "

cut at curb 9.9

Reopened & closed May 25, 1908

Pipes 6

C. A. Blackmar D. L.

Reopened Oct 6-1908

Closed " 12-1908

J. C. Collins D. L.



Plotted

Pine St

Entered Sewer 34-1 East of
1st m h East of Summer St R Mar 30.

Oct 8/91 161

Phiba R. Arnold

Brady St.

388 Washington St

Permit 6355

Opened Dec 10 1891

Closed " 12. "

Reopened June 21 1900

Closed " 22 1900

L. W. Coldrick D.L. - Cleanout

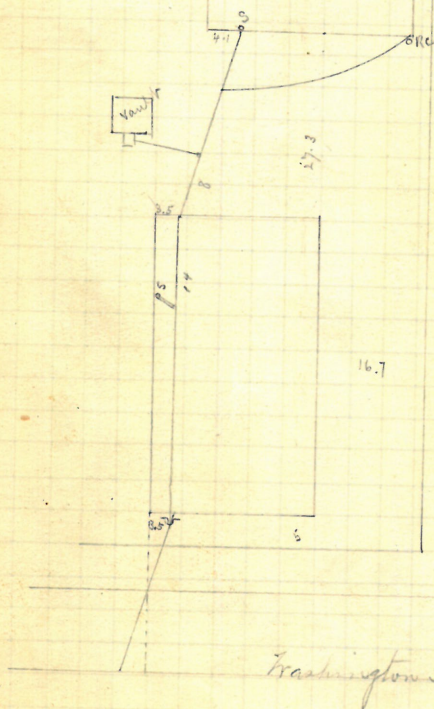
cut at cut

Pipe 6"

Reopened Feb. 10, 1925

Closed Feb. 10, 1925

A. Riello D.L.



Plotted

Entered Sewer 72.3. West of 1st
or to East of Oliver St

R. Jan 29. 192

Oct 12/91.

Amanda G. Boomstock

45-38 Wesleyan Ave.

R. Brady, D.L.

Permit #6356.

Opened Oct 14. 1891

Closed " 16. "

Reopened Oct. 3-1913

Closed " 3-1913

Geo. F. Lenz, D.L.

Reopened Apr. 9-1926

Closed " 11-10-1926

A. H. Blackburn, D.L.

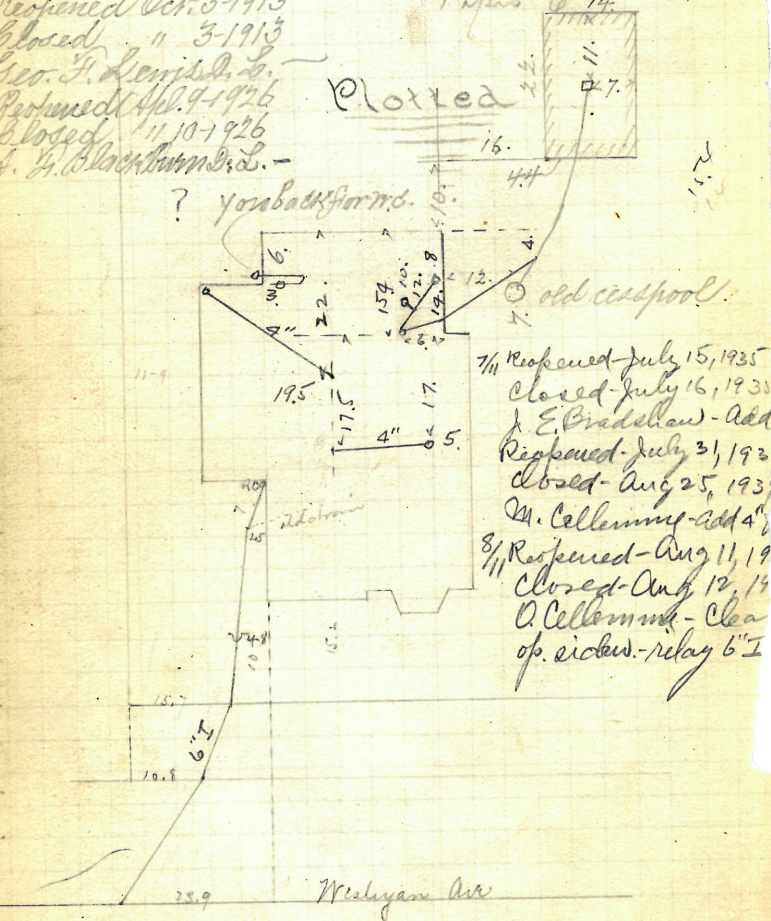
cut at curb 10'-3"

Pipes 6" 4"

Plotted

? you back form.

Mr Brady says this should be 88 ft instead of 89-2

Entered Sewer 89-2 west of
3rd h h East of Broad St R Nov 30. 19

✓✓ Oct. 12/91 163

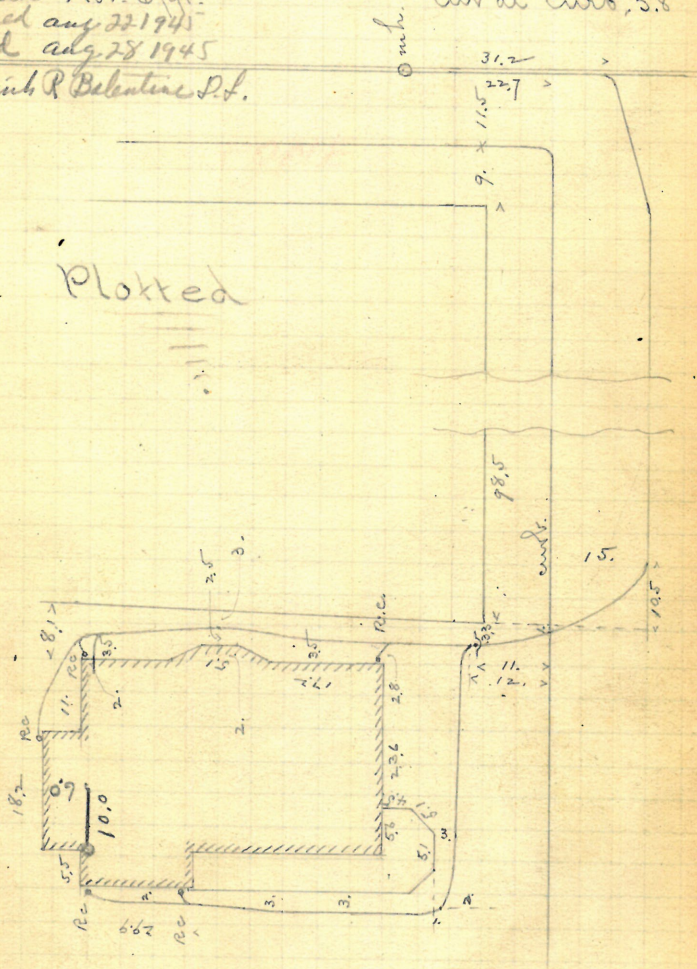
H R Chadsey D.L.

Permit # 6357.

Opened Oct. 14/91.
Closed Nov. 6/91.
Reopened Aug. 22/94.
Closed Aug. 28/94.
Add with R. Balentine, D.S.

6" pipe.
Cut at ends, 5.8

Plotted



Enters Olive st sewer
31.2 W. of 7th mth. W.
of Thayer st.

R. Dec. 10/91.

Atlantic Mills Permit 7485

Riviera Mottled Mills " 7486

Charles L. Blanding " " 80

Helaine St.

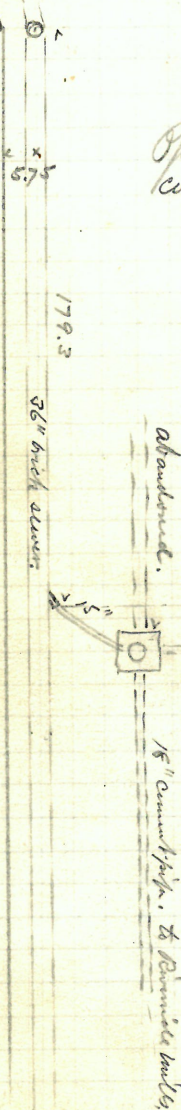
Alfred Blanding (D.L.)

O. Clapp, Engr. Supr.

Opened Jan 2^d 1893
Completed " 5 "

Plotted

Atlantic Mills

Reo June 24 1947
Clear June 24 1947
Clear R. BlandingThis line taken
up and 15" sub
tended
see 824-P 108

Wm H. Corvill.

85 + 89 Manton Ave.

Allen Aldrich D.D.

Opened Feb. 8, 1893.

Permit No 7488

Reopened Sept. 3-1914

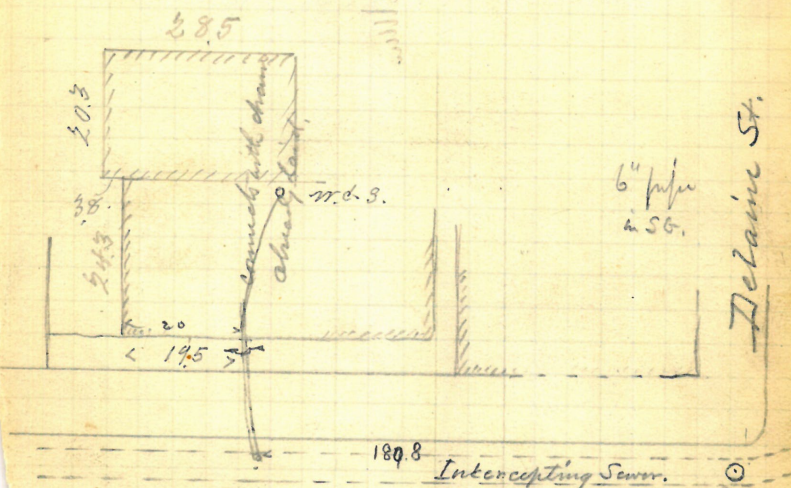
Cut 10 ft.

Closed " 5-1914

A. W. Colgrove, L.

O. H. Clapp Eng'g & Supt.

Plotted



Manton Ave.

Enter sewer 180.8 n. of M.A. at Detain'g

166✓

REMOVED

Catherine Mc Elroy

#117 Coddling, 31 B. Street.

J. Frank Read, D.C.

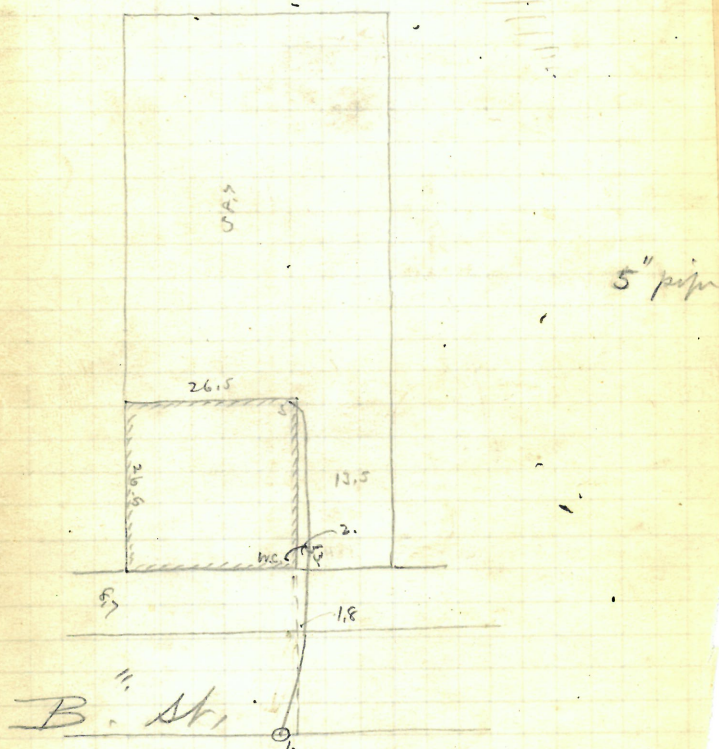
opened April 18, 92

closed " 20 "

Permit 7738

cut 10.

Plotted

at 4th N.W. N of Central St.

Robert Gibson

263-265 Valley St.

Permit 7687

P. Leouley D.L.

opened April 12, 93

closed " 13 "

Reopened - Apr. 25, 1940

closed - Apr. 29, 1940

J. Bederman -

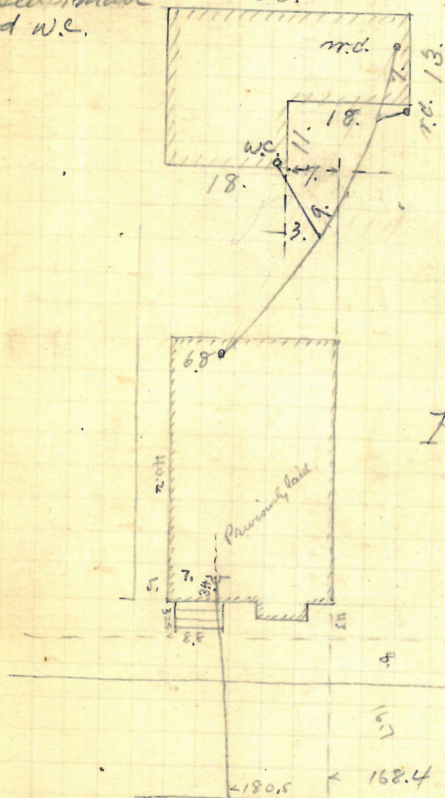
add W.C.

cut 9.4

Reopened Dec. 19-1905

closed " 21-1905

36. N. H. Colgrove D. L.



Plotted

Enter sewer 180.5 S. of 1st N.H. St. of Muel's Inc.

